

Background

Central Waterfront Hub Study

The City of Vancouver recently began work on a 16-month planning study to create an Urban Design and Transportation Plan for the area around Waterfront Station: the Central Waterfront Hub.

Waterfront Hub Key Goals

Provide improved arrival and interchange facilities to integrate the many transit modes which converge in the area:
Skytrain, Canada Line, West Coast Express, Bus, Seabus, Helijet.

Introduce high quality new development integrated with the transit hub.

Enhance the public realm - streets and open spaces - in this important part of the city.



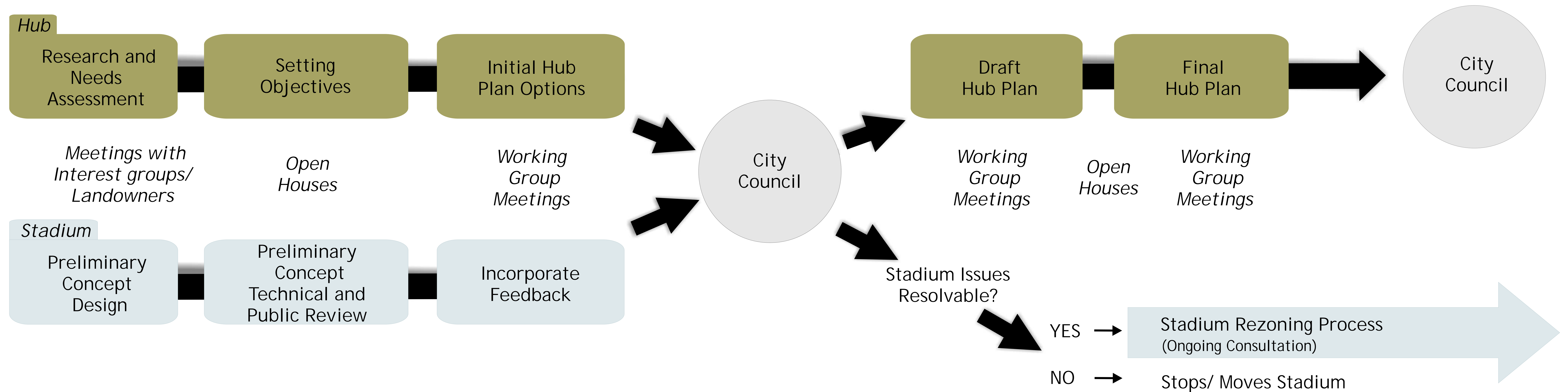
Whitecaps Stadium Proposal

As part of the Hub planning study, the City will also review a revised proposal by the Vancouver Whitecaps to build a 15,000 - 30,000 seat stadium on the site of the existing SeaBus Terminal.

This review will assess whether the new stadium proposal can resolve the five problematic issues identified in the 2006 study of the previously proposed site (above the rail tracks immediately north of Gastown), as well as any new issues associated with the SeaBus Terminal site.

Following the review, City staff will report to Council on whether or not the stadium proposal should proceed to a Rezoning process.

Process Flow Chart



Estimated Timeline

Winter 2007

Summer 2007

Spring 2008

Central Waterfront Hub Study