

Streetscape/Public Space Preferences

Workshop participants were shown numerous images illustrating possibilities for a variety of streetscape and public space details.

The following images represent the images that received the most 'votes' in each category.

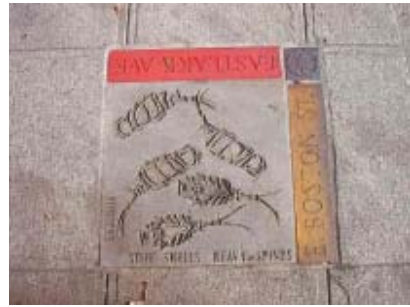
street art preferences



Neighbourhood 'logo' in-laid into sidewalk



street names in-laid into sidewalk in brass



street names at corners on Eastlake Ave in Seattle



bench and sidewalk in-lays on Cambie Street

public/semi-public space ideas



Pedestrian streets and passageways



Giant-sized chess board in public space

street furniture preferences



'Heritage Line' Bus Shelter



'Trash Can



'Co-ordinated street furniture suite



'Bike rack taking over parking space

landscaping preferences



landscaped bulges at corner : consider 'Asian' plantings



'Mini-public space' with drinking fountain, landscaping.



Permeable infiltration landscaping with rocks, not with standing water



street signage ideas



historic neon (this sign was at Slokan + Kingsway)



Building details using automotive hub caps

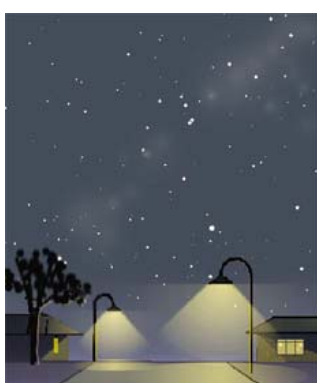


Unique Neighbourhood Street name signs



Building addresses embedded into sidewalk in tile

street lighting ideas



'Dark Sky' Lighting to reduce glare and light pollution



Both street lighting and pedestrian oriented lighting



'Heritage' style luminaire with cut-off 'Dark sky' lens



Contemporary style luminaire with 'cut-off' Dark sky lens