

Streetscape Overview

The design of the streetscape was influenced by a desire to create expansive green spaces and reduce the immediate physical impact on neighbours - namely, the courtyard building to the west and Broughton Mini-Park to the north-east. The tower has a minimal footprint, and is situated in a manner that allows generous green spaces on all sides.

The landscaped area on Comox Street is particularly generous. A mini park, community gardens and a children's play area animate the street and acknowledge the corner nature of the site.

There are 6 townhouses located along Broughton Street and around the north and west faces of the building. They will provide ground-oriented rentals for families and eyes on the street.

An amenity space for the residents is located at ground level, at the south-west corner of the building. It relates to open space on the west side and its activities will further animate the streetfront.



STREETSCAPE

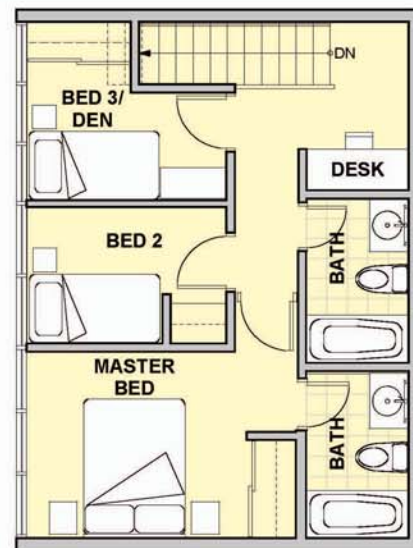
PROPOSED DEVELOPMENT



Tower Townhouses



Level 1



Level 2