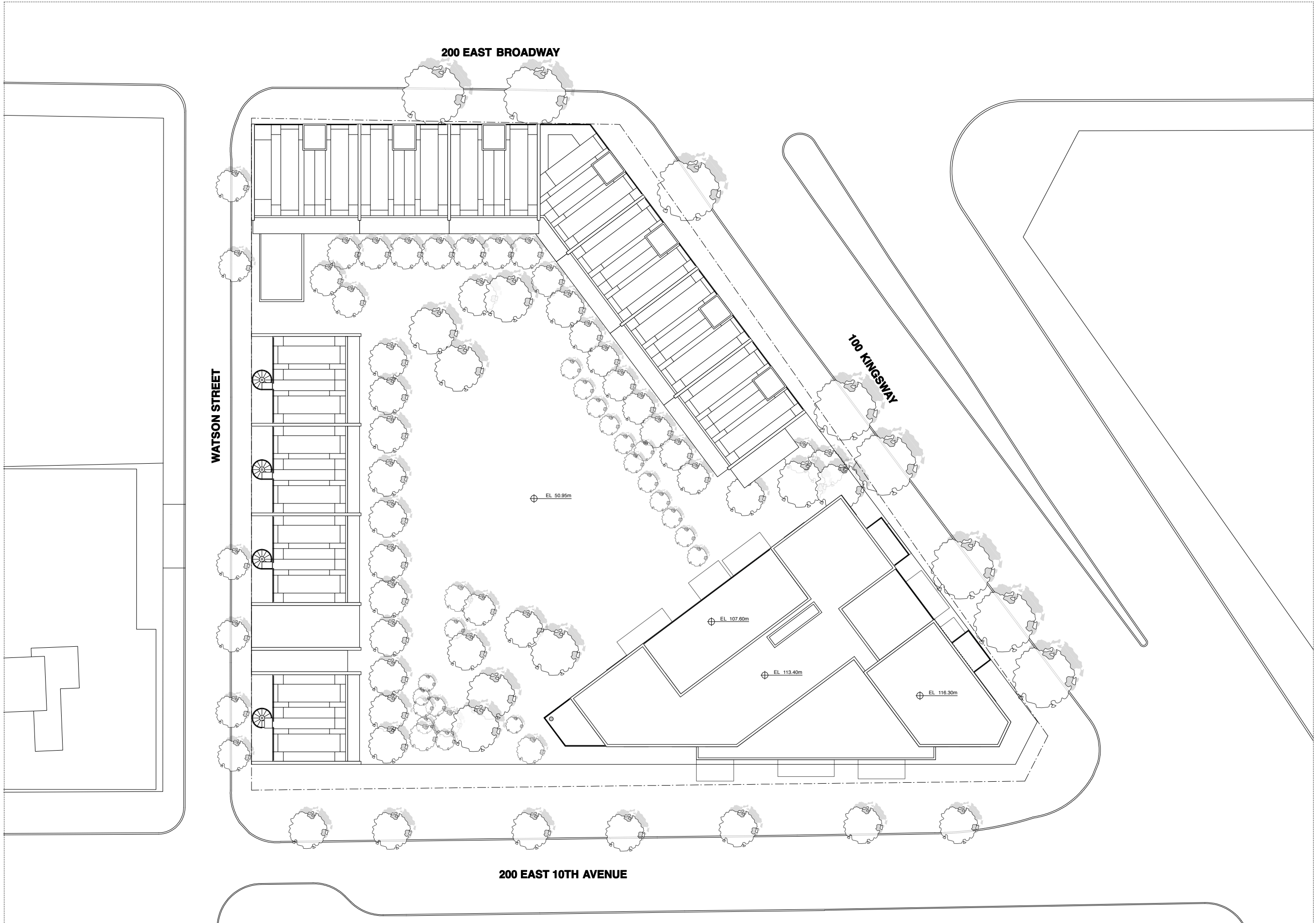


All drawings and related documents are the property of Acton Ostry Architects Inc and may not be reproduced in whole or in part without the Architect's permission. This drawing should not be used to calculate areas. Do not scale this drawing. All dimensions to be checked on site by the Contractor and such dimensions to be their responsibility. All work must comply with the relevant Building Code or Building Bylaw and related documents. Drawing errors and omissions must be immediately reported to the Architect.

issues

9 Jun 10 Issued for UDP Workshop
26 Jul 10 Issued for Rezoning

revisions



ACTON OSTRY ARCHITECTS INC

111 E 8 Avenue
Vancouver BC
Canada V5T 1R8
t: 604.739.3344
f: 604.739.3355
info@actonostry.ca

Kingsway + Broadway

Rize Alliance
Kingsway + Broadway

scale	date
1 : 200	26 Jul 10
project code	status
KWY	Rezoning
drawn	checked
WS	RA



Site Plan

drawing number
A0.02