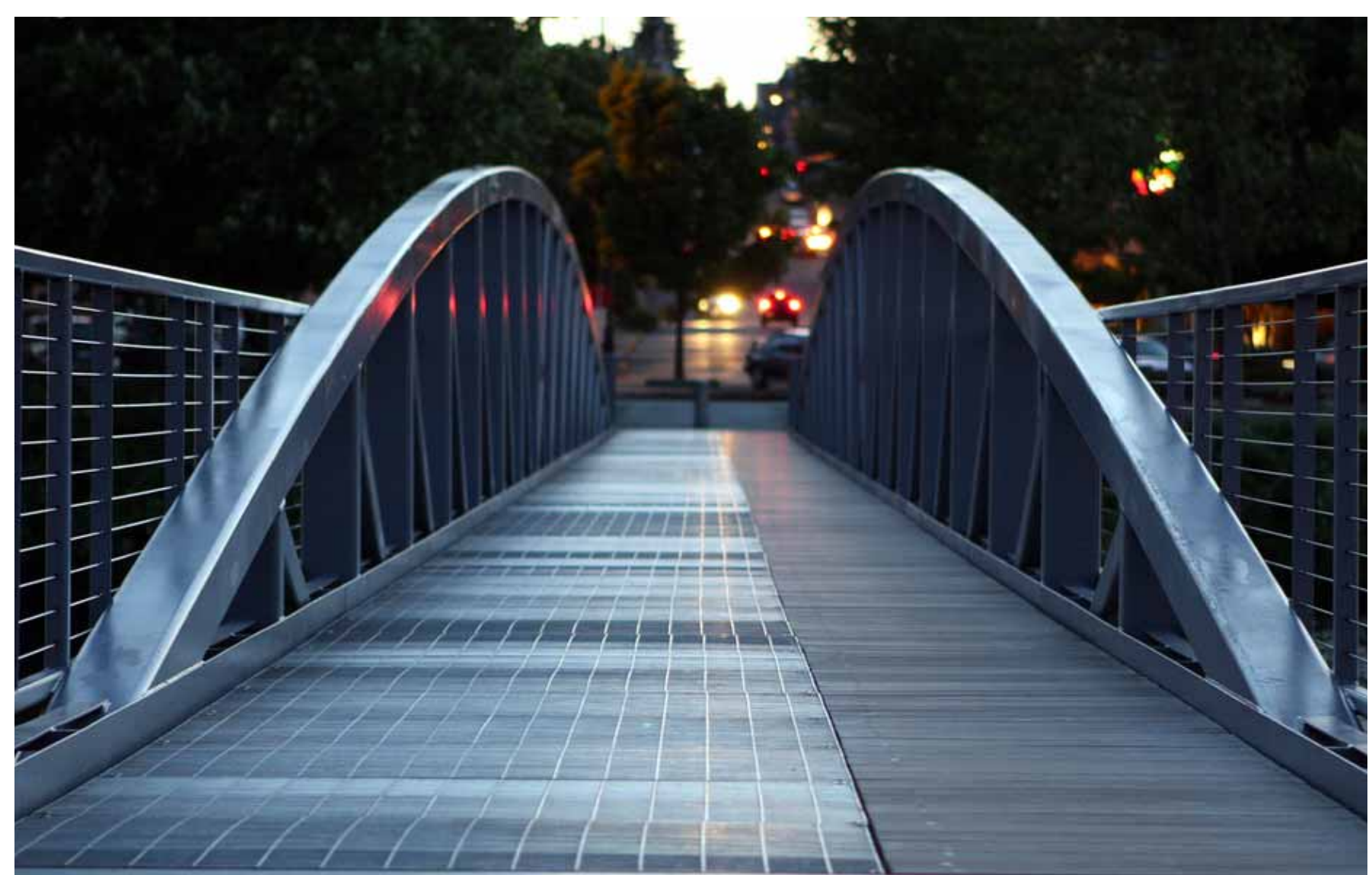


SMALL BRIDGES, WATER CHANNELS AND PASSAGEWAYS GUIDE PEDESTRIANS AND CYCLISTS THROUGH THE LITTLE MOUNTAIN COMMUNITY PROVIDING INTERESTING LANDSCAPE FEATURES TO LOOK AT AND PLACES TO EXPERIENCE.





THE 'GREEN WEDGE' IS A PROMINENT RELICT LANDSCAPE FEATURE THAT WILL BE PRESERVED AS A COMMUNITY PARK. THE WEDGE WILL ALSO PROVIDE A GATEWAY TO THE SITE AND A PRIMARY CONNECTOR TO QUEEN ELIZABETH PARK.



COMMUNITY GATHERING

THE 'GREEN WEDGE'
AREA = 17,000 SQ. FT. (1,600 SQ. M.)



CHILDREN'S PLAY



PASSIVE RECREATION



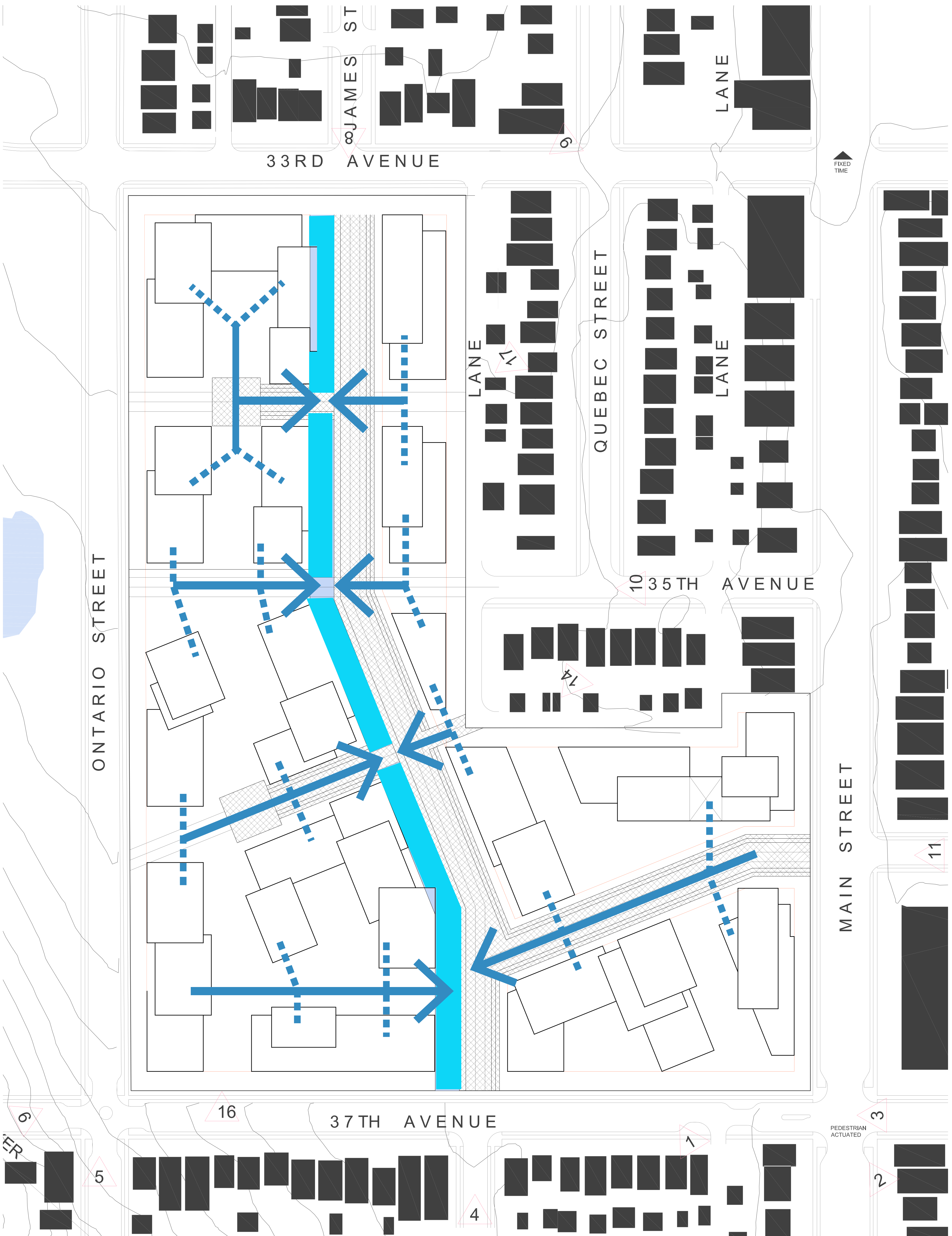
URBAN AGRICULTURE



GATHERING AND SEATING



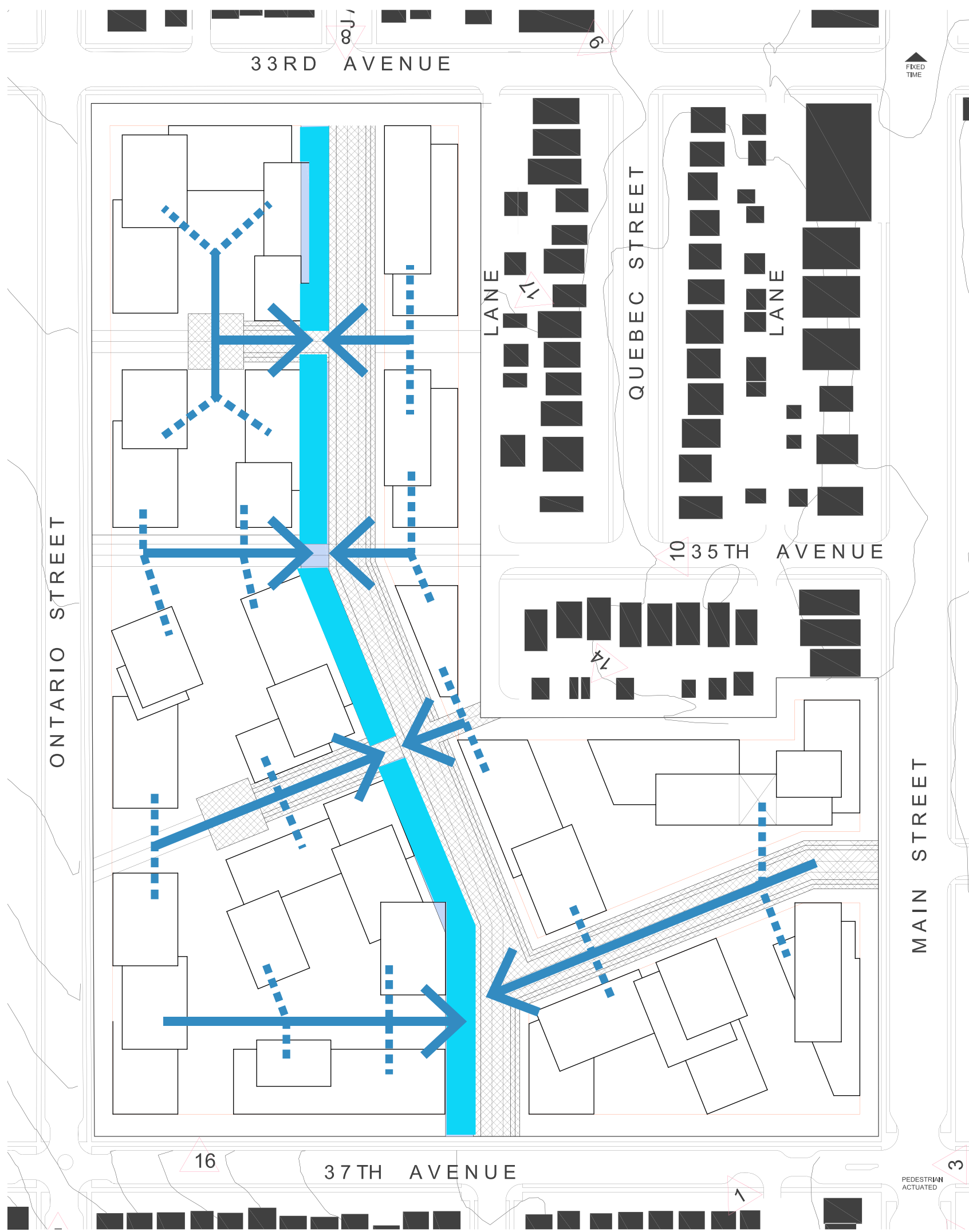
NATURESCAPING



SITE PLAN



envisioning *little mountain*



THE INTEGRATED STORMWATER SYSTEM INCLUDES SMALL WATER CHANNELS THAT DIRECT RAINWATER FROM ROOFS AND PAVED SURFACES TO THE CANAL. THE SYSTEM ALLOWS FOR RAINWATER STORAGE, INFILTRATION, BIOFILTRATION AND REUSE IN PRIVATE, SEMI-PUBLIC AND PUBLIC SPACES.



PERMEABLE PAVING



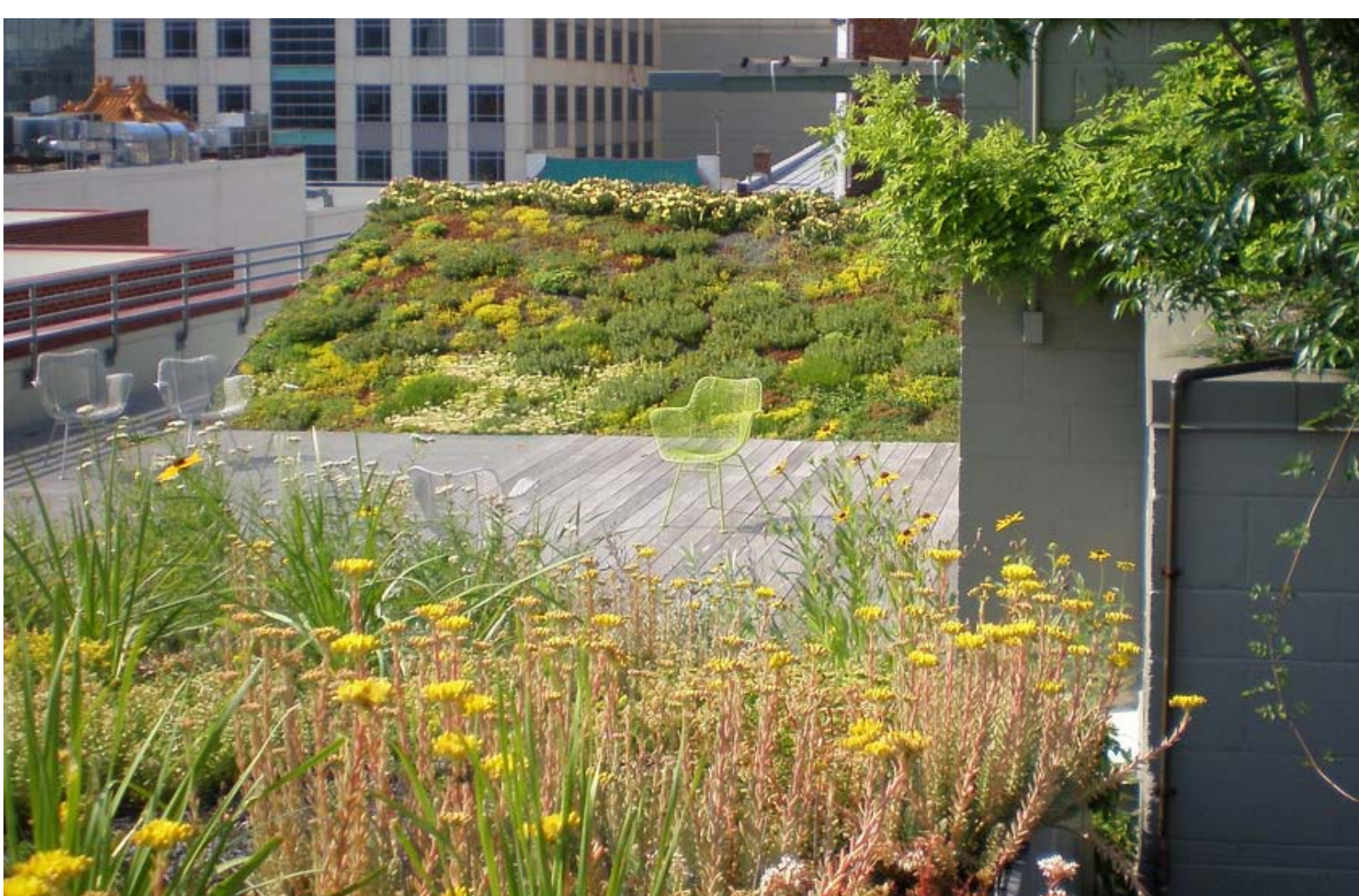
NATURESCAPING



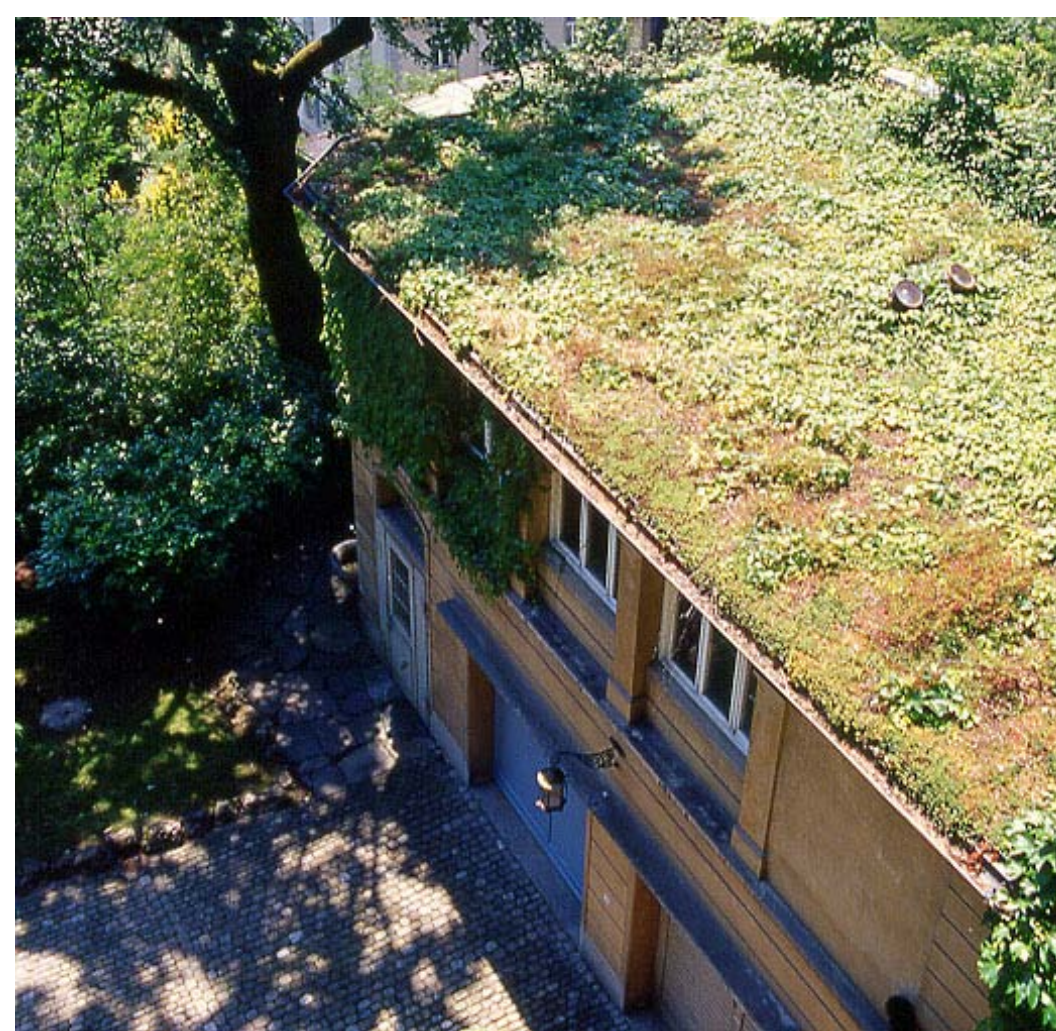
RAINWATER COLLECTION



STORMWATER RUNNELS



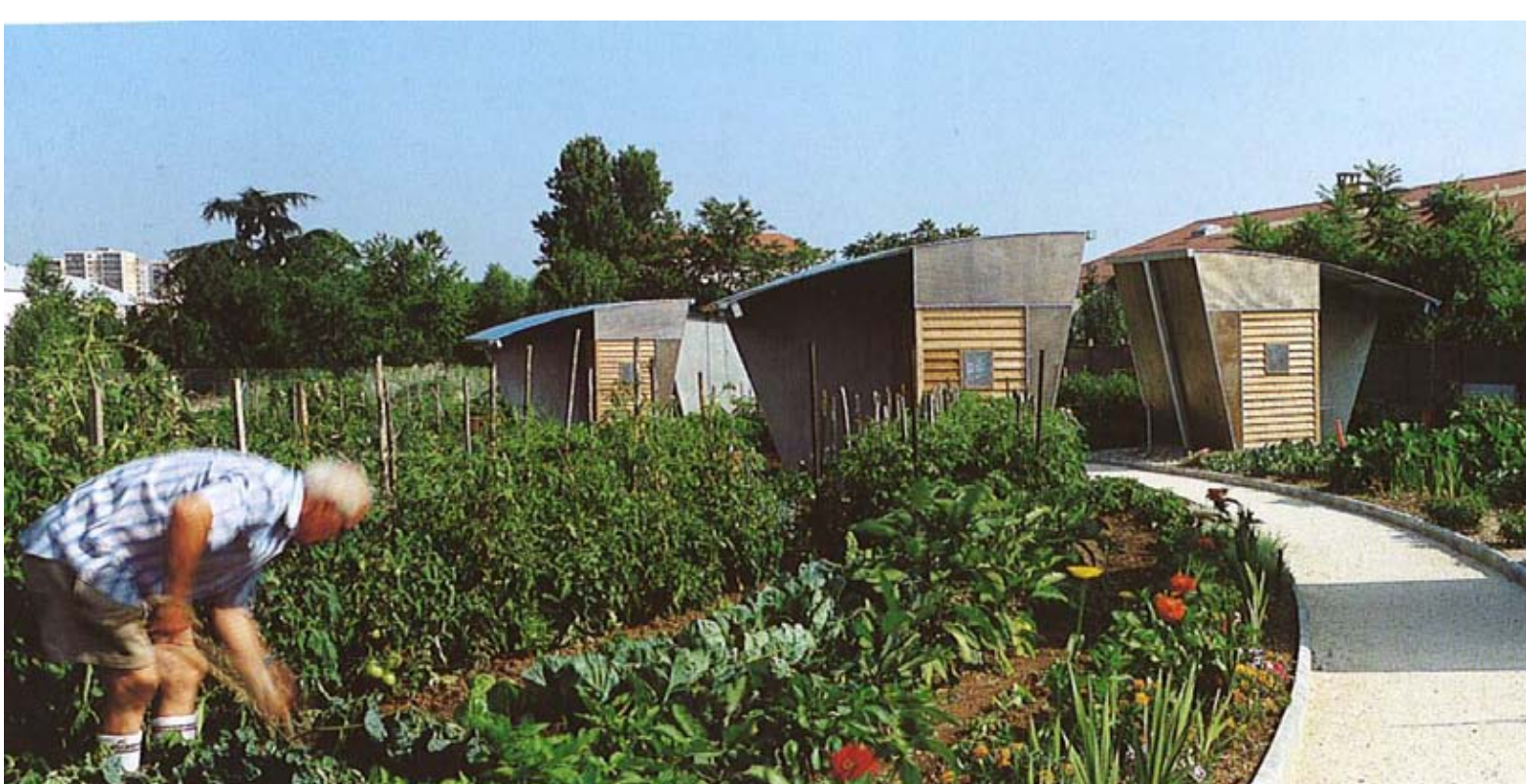
EXTENSIVE GREENROOFS



INTENSIVE GREENROOFS



NATURALIZED CHANNELS



URBAN AGRICULTURE



BIOFILTRATION



LOW ENERGY, DROUGHT TOLERANT PLANTING