

**From:** "Johnston, Sadhu" <[Sadhu.Johnston@vancouver.ca](mailto:Sadhu.Johnston@vancouver.ca)>

**To:** "Direct to Mayor and Council - DL" <[CCDTMACDL@vancouver.ca](mailto:CCDTMACDL@vancouver.ca)>

**Date:** 3/29/2017 12:52:24 PM

**Subject:** 4/20 Mixed Employment and Industrial Designated Lands Map

**Attachments:** CWRP - RDS - Mixed Employment and Industrial Designated Lands - 2017-03-29.PDF

Greetings Mayor and Council-

Attached is a map showing all our 'employment lands' and City parks as to indicate all the areas that are non-residential.

Hope this helps.

Best

Sadhu

**Sadhu Afochs Johnston** | City Manager

City of Vancouver | 453 W 12<sup>th</sup> Avenue

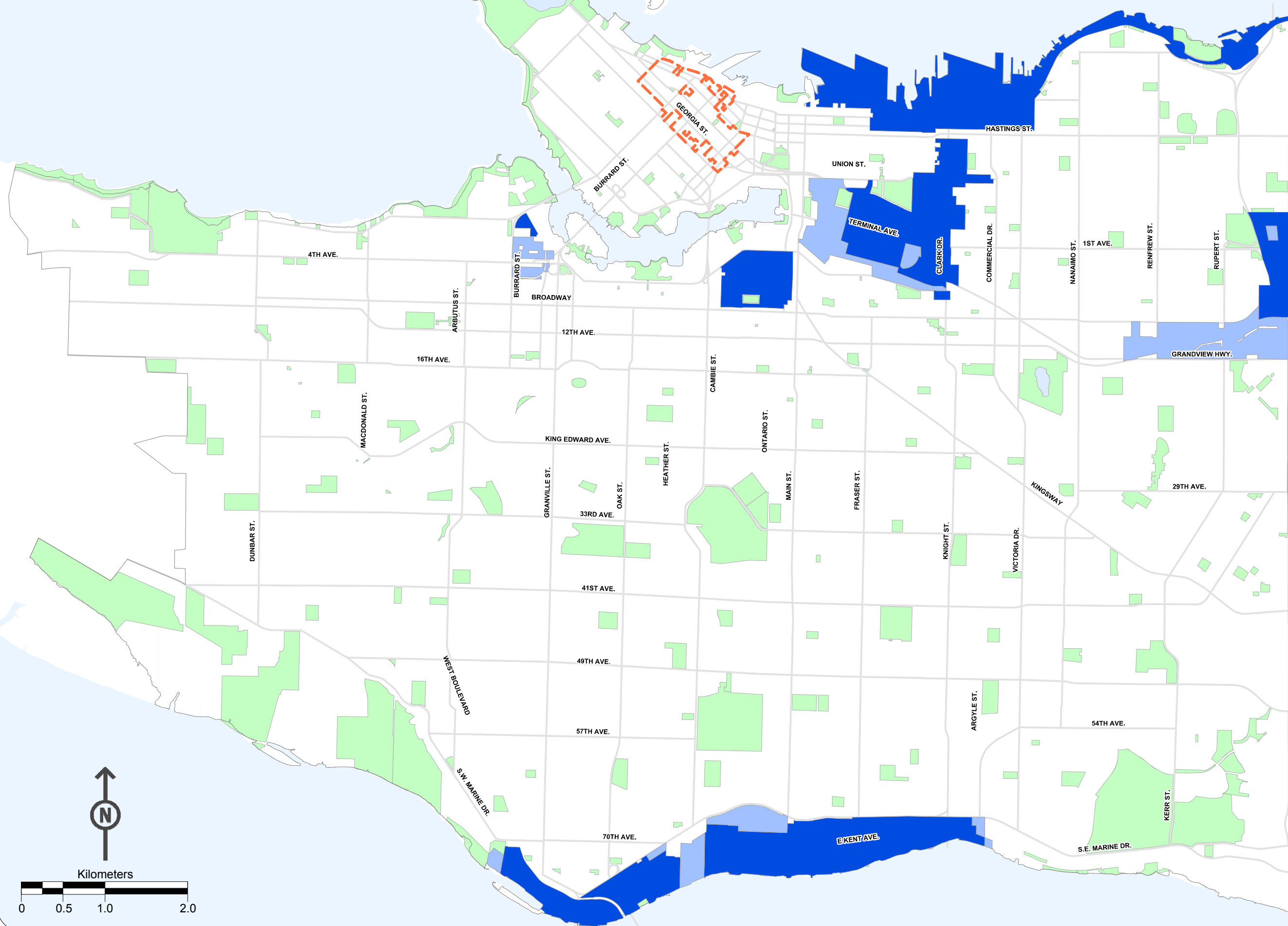
Vancouver | BC V5Y 1V4

604.873.7627 | [Sadhu.johnston@vancouver.ca](mailto:Sadhu.johnston@vancouver.ca)

Twitter: sadhuajohnston



# City of Vancouver Mixed Employment and Industrial Designated Lands



## LEGEND

### Analysis Layers

CBD Boundary

### Land Designations

Industrial

Mixed Employment

### Base Layers

City Boundary

Park

Water

Major Street



Kilometers



Data Source: City Layers, RCS  
Date Created: 2017/03/29