

File No.: 04-1000-20-2018-014

March 12, 2018

s.22(1)

Dear s.22(1)

Re: **Request for Access to Records under the Freedom of Information and Protection of Privacy Act (the "Act")**

I am responding to your request of January 5, 2018 for:

As-built drawings for:

- a. The gravity sanitary sewer constructed under COV Contract No. 8009-100-02225 by Maple Reinders Inc. on behalf of Wesgroup;
- b. The information should include as-built invert elevations at manholes P1 through to P6;
- c. The work was underway late August/September, 2016; and
- d. The project is located at the southeast corner of 8655 Boundary Road.

We have attached the Record Drawings of the Boundary Road Pump Station, however our Engineering staff has advised us that the As-built Drawings will be available at a later date. Please re-submit your request for those records in 15 business days.

Please note: for Part A of your request, our Engineering staff confirms that Wesgroup had a contract directly with Maple Reinders, and the City was not directly involved in the construction (and therefore cannot verify the contract). You can contact Wesgroup directly for further information.

For Part B of your request, the attached Record Drawings includes a chart of elevations for manholes P1 through to P6.

For Part C of your request, the City was not directly involved with the construction therefore our Engineering staff cannot confirm the dates.

For Part D of your request, our Engineering staff cannot confirm the exact location of the project as there is no civic address associated with the pump station; however, the drawings enclosed indicate the location to be on the corner of Boundary Road and E Kent Ave North.

Under section 52 of the Act you may ask the Information & Privacy Commissioner to review any matter related to the City's response to your request. The Act allows you 30 business days from the date you receive this notice to request a review by writing to: Office of the Information & Privacy Commissioner, info@oipc.bc.ca or by phoning 250-387-5629.

If you request a review, please provide the Commissioner's office with: 1) the request number assigned to your request (#04-1000-20-2018-014); 2) a copy of this letter; 3) a copy of your original request for information sent to the City of Vancouver; and 4) detailed reasons or grounds on which you are seeking the review.

Please do not hesitate to contact the Freedom of Information Office at foi@vancouver.ca if you have any questions.

Yours truly,



Barbara J. Van Fraassen, BA
Director, Access to Information & Privacy

Barbara.vanfraassen@vancouver.ca
453 W. 12th Avenue Vancouver BC V5Y 1V4
Phone: 604.873.7999
Fax: 604.873.7419

Encl.

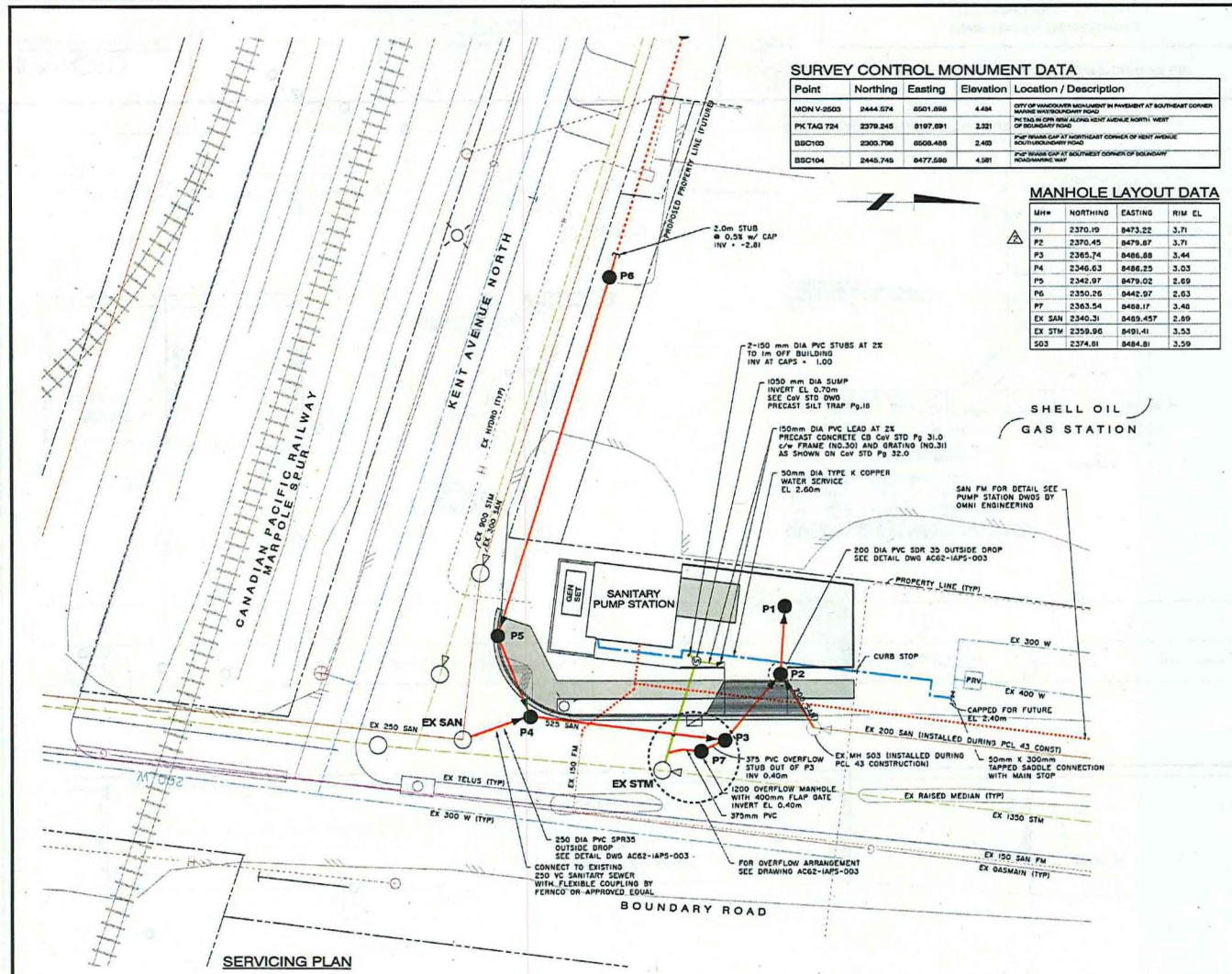
:ma

SURVEY CONTROL MONUMENT DATA

Point	Northing	Easting	Elevation	Location / Description
MON V-2503	8444.074	8501.698	4.434	CITY OF VANCOUVER MONUMENT IN PAVEMENT AT SOUTHWEST CORNER MARINE WATERPROOFING ROAD TO THE NORTH END ALONG KENT AVENUE NORTH WEST OF BOUNDARY ROAD
PK TAG 724	2379.245	8197.991	2.321	TOP OF BOUNDARY ROAD
BSC103	2303.796	8508.488	2.403	TOP OF WALKWAY AT SOUTHWEST CORNER OF KENT AVENUE SOUTH/WALKWAY ROAD
BSC104	2445.749	8477.580	4.581	TOP OF WALKWAY AT SOUTHWEST CORNER OF BOUNDARY ROAD/WALKWAY ROAD

MANHOLE LAYOUT DATA

M#	NORTHING	EASTING	RIM EL.
P1	2370.19	8473.22	3.71
P2	2370.45	8479.87	3.71
P3	2365.74	8466.88	3.44
P4	2346.63	8446.23	3.03
P5	2342.97	8479.02	2.69
P6	2350.26	8442.97	2.63
P7	2363.54	8489.17	3.46
EX SAN	2340.31	8489.457	2.89
EX STM	2359.95	8491.41	3.53
S03	2374.81	8484.81	3.59



GENERAL NOTES

1. ALL CONSTRUCTION, MATERIALS AND TESTING TO BE IN ACCORDANCE WITH THE CONTRACT DOCUMENTS.
2. EXISTING UNDERGROUND SERVICES AND UTILITIES SHOWN ARE BASED ON AVAILABLE AS CONSTRUCTED DRAWINGS. THE CONTRACTOR SHALL EXPOSE AND VERIFY THE LOCATION OF ALL EXISTING SERVICES PRIOR TO CONSTRUCTION AND NOTIFY THE ENGINEER OF ANY DISCREPANCIES. IN CASES OF DISCREPANCIES, THE CONTRACTOR SHALL EMPLOY A UTILITY LOCATOR TO IDENTIFY THE LOCATION OF UNDERGROUND SERVICES AND UTILITIES PRIOR TO CONSTRUCTION.
3. THE CONTRACTOR SHALL TAKE EXTREME CARE WHEN WORKING NEAR OR AROUND EXISTING SERVICES. ANY DISTURBANCE TO THESE SERVICES SHALL BE REPLACED OR MADE GOOD TO THE SATISFACTION OF THE OWNER AND THE CITY OF VANCOUVER.
4. DISTURBANCE TO ANY LANDSCAPING OR IMPROVEMENT SHALL BE RESTORED BY THE CONTRACTOR TO THE SATISFACTION OF THE OWNER. IN SOME CASES, THE CITY OF VANCOUVER MAY REQUIRE THE CONTRACTOR TO OBTAIN WRITTEN ACCEPTANCE OF THE RESTORATION FROM THE AFFECTED PROPERTY OWNERS.
5. ALL ELEVATIONS ARE IN METRES WITH RESPECT TO CITY OF VANCOUVER GEODETIC DATUM.
6. THE CONTRACTOR SHALL ENSURE THAT ALL APPROVALS REQUIRED FOR THE PROPOSED WORKS HAVE BEEN OBTAINED FROM ALL AUTHORITIES AND AGENCIES PRIOR TO COMMENCEMENT OF THE WORK.
7. ALL WORK ON CITY INFRASTRUCTURE TO BE PERFORMED BY CITY CREWS OR UNDER THE DIRECT SUPERVISION OF A CITY INSPECTOR. AT THE DISCRETION OF THE CITY ENGINEER, A NOTICE OF 10 HOURS MUST BE PROVIDED FOR CITY INSPECTION AND ADDITIONAL NOTICE PROVIDED FOR WORK BY CITY CREWS.
8. ALL DISTURBED AREAS TO BE TOP DRESSED WITH 150mm TOPSOIL AND HYDROSEEDED WITH A LOW GROW MIX BY PREMIER PACIFIC SEEDS.

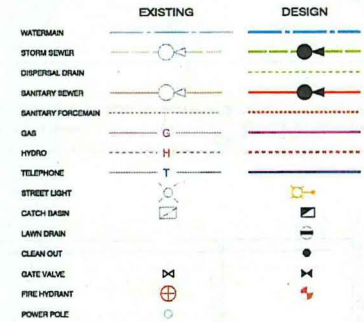
SERVICING NOTES

- SEWER**
1. ALL MANHOLE AND CATCHBASIN CASTINGS ARE TO MEET CITY OF VANCOUVER STANDARDS.
 2. TIES TO EXISTING CITY INFRASTRUCTURE SHALL BE PERFORMED BY THE CITY AT THE DEVELOPER'S EXPENSE UNLESS OTHERWISE AGREED UPON BY THE CITY ENGINEER OR A CASE BY CASE BASIS. CONTRACTOR TO COORDINATE ALL TIE-IN CONSTRUCTION WITH THE CITY.
 3. FOR TRENCH CONSTRUCTION DETAILS SEE DWG AC62-1APS-003.
 4. ALL MANHOLES TO 150mm DIA UNLESS OTHERWISE NOTED.

WATER

1. FOR TRENCH CONSTRUCTION DETAILS SEE CIV STD DWG S03 SECTION 1 PAGE 4.
2. ALL WORK TO BE DONE IN ACCORDANCE WITH THE CITY OF VANCOUVER WATERWORKS MANUAL UNLESS OTHERWISE NOTED.

LEGEND



THE SEAL AND SIGNATURE OF THE UNDERSIGNED ON THIS DRAWING CERTIFIES THAT THE DESIGN INFORMATION CONTAINED IN THESE DRAWINGS ACCURATELY REFLECTS THE ORIGINAL DESIGN AND THE MATERIAL DESIGN CHANGES MADE DURING CONSTRUCTION, THAT WERE BROUGHT TO THE UNDERSIGNED'S ATTENTION. THESE DRAWINGS ARE INTENDED TO INCORPORATE ADDITIONAL CHANGE ORDERS AND OTHER MATERIAL DESIGN CHANGES, BUT NOT NECESSARILY ALL SITE INSTRUCTIONS.

THE UNDERSIGNED DOES NOT WARRANT OR GUARANTEE, NOR ACCEPT ANY RESPONSIBILITY FOR THE ACCURACY OR COMPLETENESS OF THE AS-CONSTRUCTED INFORMATION SUPPLIED BY OTHERS CONTAINED IN THESE DRAWINGS, BUT DOES, BY SEALING AND SIGNING, CERTIFY THAT THE AS-CONSTRUCTED INFORMATION, IF ACCURATE AND COMPLETE, PROVIDES AN AS-CONSTRUCTED SYSTEM WHICH SUBSTANTIALLY COMPLIES IN ALL MATERIAL RESPECTS WITH THE ORIGINAL DESIGN INTENT.

RECORD DRAWING

InterCAD
CONSULTING ENGINEERS

NO.	DATE	DESCRIPTION	BY	CHECKED
3	17-12-14	RECORD DRAWING	OV	
2	18-02-11	REVISED MANHOLE COORDINATES AND RIM ELEVATIONS	M.S.	
1	18-10-07	ISSUED FOR CONSTRUCTION	M.S.	
B	18-09-17	ISSUED FOR TENDER	M.S.	
A	18-08-09	90% DESIGN SUBMISSION	M.S.	
1		DATE		

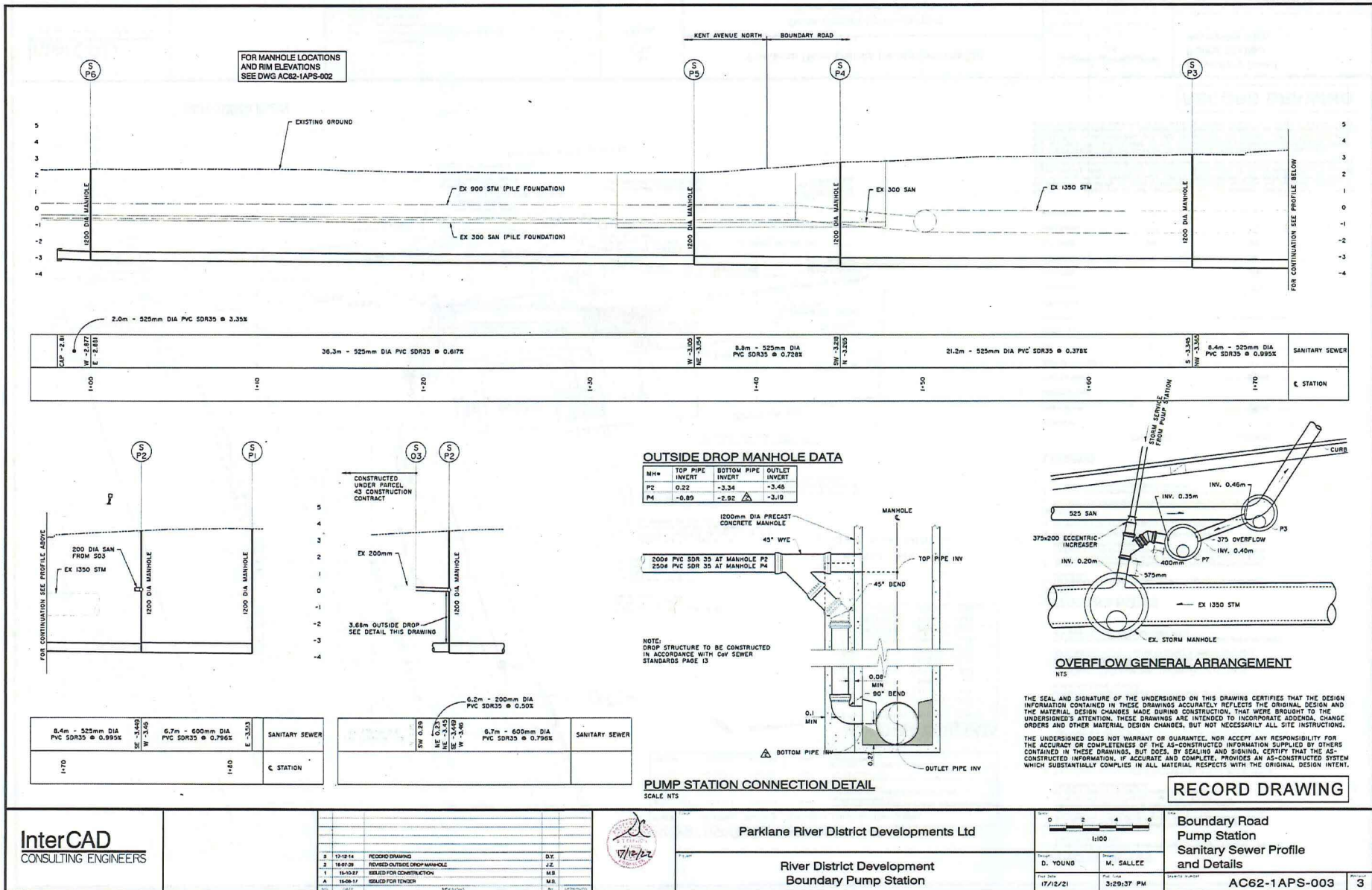


Parklane River District Developments Ltd

River District Development
Boundary Pump Station

Scale: 1:200	Drawn by: D. YOUNG	Checked by: M. SALLEE
Date: 17/12/21	Time: 3:21:37 PM	

Boundary Road Pump Station Servicing Plan	Project No: AC62-1APS-002	Sheet No: 3
-------------------------------------------------	---------------------------	-------------



FOR MANHOLE LOCATIONS AND RIM ELEVATIONS SEE DWG AC62-1APS-002

KENT AVENUE NORTH BOUNDARY ROAD

EXISTING GROUND

EX 900 STM (PILE FOUNDATION)

EX 300 SAN (PILE FOUNDATION)

EX 300 SAN

EX 1350 STM

FOR CONTINUATION SEE PROFILE BELOW

2.0m - 525mm DIA PVC SDR35 @ 3.35%

36.3m - 525mm DIA PVC SDR35 @ 0.61%

8.8m - 525mm DIA PVC SDR35 @ 0.728%

21.2m - 525mm DIA PVC SDR35 @ 0.378%

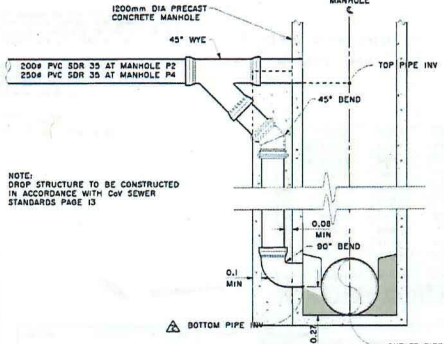
5.4m - 525mm DIA PVC SDR35 @ 0.95%

SANITARY SEWER

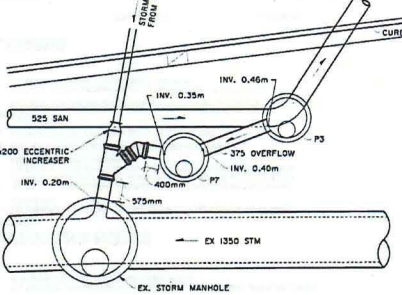
STATION

OUTSIDE DROP MANHOLE DATA

MH#	TOP PIPE INVERT	BOTTOM PIPE INVERT	OUTLET INVERT
P2	0.22	-3.34	-3.46
P4	-0.89	-2.92	-3.19



PUMP STATION CONNECTION DETAIL
SCALE NTS



OVERFLOW GENERAL ARRANGEMENT
NTS

THE SEAL AND SIGNATURE OF THE UNDERSIGNED ON THIS DRAWING CERTIFIES THAT THE DESIGN INFORMATION CONTAINED IN THESE DRAWINGS ACCURATELY REFLECTS THE ORIGINAL DESIGN AND THE MATERIAL DESIGN CHANGES MADE DURING CONSTRUCTION, THAT WERE BROUGHT TO THE UNDERSIGNED'S ATTENTION. THESE DRAWINGS ARE INTENDED TO INCORPORATE ADDENDA, CHANGE ORDERS AND OTHER MATERIAL DESIGN CHANGES, BUT NOT NECESSARILY ALL SITE INSTRUCTIONS.

THE UNDERSIGNED DOES NOT WARRANT OR GUARANTEE, NOR ACCEPT ANY RESPONSIBILITY FOR THE ACCURACY OR COMPLETENESS OF THE AS-CONSTRUCTED INFORMATION SUPPLIED BY OTHERS CONTAINED IN THESE DRAWINGS, BUT DOES, BY SEALING AND SIGNING, CERTIFY THAT THE AS-CONSTRUCTED INFORMATION, IF ACCURATE AND COMPLETE, PROVIDES AN AS-CONSTRUCTED SYSTEM WHICH SUBSTANTIALLY COMPLIES IN ALL MATERIAL RESPECTS WITH THE ORIGINAL DESIGN INTENT.

RECORD DRAWING

InterCAD
CONSULTING ENGINEERS

NO.	DATE	DESCRIPTION	BY	CHECKED
3	17-12-14	RECORD DRAWING	D.Y.	
2	16-07-20	REVISED OUTSIDE DROP MANHOLE	J.Z.	
1	16-05-21	ISSUED FOR CONSTRUCTION	M.B.	
A	16-08-17	ISSUED FOR TENDER	M.B.	



Parklane River District Developments Ltd

River District Development
Boundary Pump Station

Drawn	D. YOUNG	Checked	M. SALLÉE
Date	17/12/21	Date	3/29/21 PM

Boundary Road
Pump Station
Sanitary Sewer Profile
and Details

AC62-1APS-003 3