



Figure 1: Current NEFC area streets development and viaducts

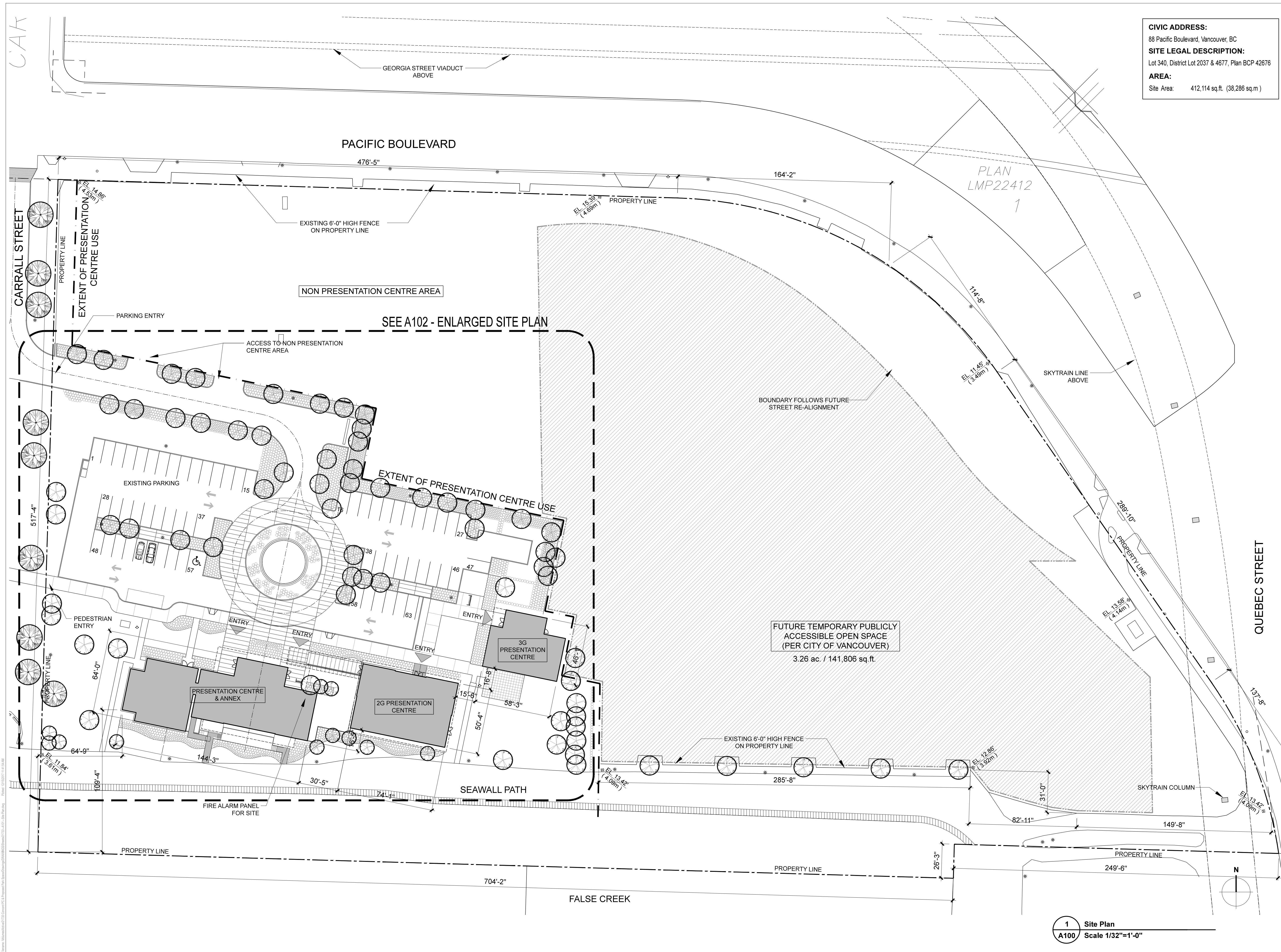


Figure 2: Future NEFC streets, parks, open space, and development in the NEFC Area Plan.

CIVIC ADDRESS:
88 Pacific Boulevard, Vancouver, BC

SITE LEGAL DESCRIPTION:
Lot 340, District Lot 2037 & 4677, Plan BCP 42676

AREA:
Site Area: 412,114 sq.ft. (38,286 sq.m)



NON PRESENTATION CENTRE AREA

SEE A102 - ENLARGED SITE PLAN

FUTURE TEMPORARY PUBLICLY ACCESSIBLE OPEN SPACE (PER CITY OF VANCOUVER)
3.26 ac. / 141,806 sq.ft.

1 Site Plan
A100 Scale 1/32"=1'-0"

Consultants
Notes

No.	Date	Description
2	2017/12/15	ISSUE FOR REVISED SITE PLAN
1	2017/10/12	ISSUE FOR DEVELOPMENT PERMIT

CONCORD PACIFIC PRESENTATION CENTRE

88 Pacific Boulevard
Vancouver, B.C.

SITE PLAN

This drawing as an instrument of service is the property of Walter Francl Architecture Inc. and may not be reproduced without the firm's permission. All information shown on the drawing is for the use in this specific project only and shall not be used otherwise without written permission from this office. Contractors shall verify and be responsible for all dimensions on the job and this office shall be informed of any discrepancies and variations shown on this drawing. Do not scale drawings.

Drawn By: AP
Reviewed By: WF

Date: 2017/12/15
Plot Date: 2017/12/15

Scale: AS SHOWN
Drawing No. A101

Project No.: 21733

WHAT IS HAPPENING?

Francl Architecture has applied to the City of Vancouver for permission to retain the existing temporary presentation centre for an interim period and transform the adjacent vacant land to the east into a temporary publicly accessible green space, to include:

- Approximately 3 acres of temporary publicly accessible open space to serve the community;
- Enhancement of the current hardscape environment adjacent to the existing presentation centre, through consultation with local residents and permitting review process; and
- No addition or alteration to the existing temporary presentation centre buildings

For the temporary publicly accessible green space, Concord Pacific is developing a preferred concept plan in collaboration with the False Creek Residents Association and PWL Partnership. We would like your thoughts on what you would like to see for the temporary green space that will be at this location for approximately five years.

We have prepared one preliminary design option for your review. After this meeting, we will review the feedback and develop the preferred temporary publicly accessible green space plan that will incorporate the comments we hear today.

Thank you for your taking the time to review the plan. We look forward to your feedback!

CONTEXT PLAN



TIMELINE

DEVELOPMENT
APPLICATION
SUBMITTED

OCTOBER 2017

MEETING
WITH FALSE
CREEK RESIDENTS
ASSOCIATION &
PRESENTATION OF
CONCEPTUAL DESIGN
OPTIONS

NOVEMBER
2017

WE ARE
HERE!

MEETING
WITH FALSE
CREEK RESIDENTS
AND PREFERRED
CONCEPT PLAN
DEVELOPMENT

DECEMBER 2017

COV DEVELOPMENT
PERMIT
BOARD MEETING

JANUARY 2018

COMPLETION OF
WORKING DRAWINGS

WINTER 2018

CONSTRUCTION WORK
BEGINS

SPRING 2018

OPENING OF CREEKSIDE
POP-UP

SUMMER 2018

CREEKSIDE POP-UP

Vancouver, British Columbia | December 12, 2017

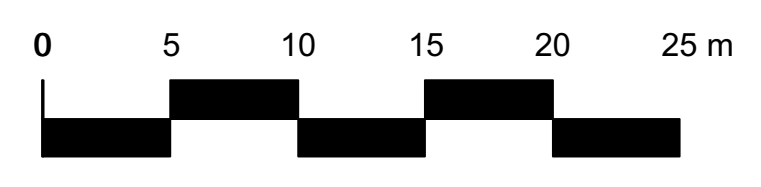
CONCORD
PACIFIC



PWL partnership



ILLUSTRATIVE SITE PLAN



LEGEND

- | | | |
|------------------------|---|---|
| 1 Elevated Flex Lawn | 9 Bleachers | 17 Shipping Container (Open Sides) |
| 2 Table Tennis | 10 Raised Planter with Trees | 18 Shipping Container (Maintenance & Storage) |
| 3 Seating Logs | 11 Boulders | 19 Painted Labyrinth |
| 4 Beach Volleyball | 12 Stepping Stone Access | 20 Painted Maze |
| 5 Picnic Tables | 13 Raised Decking | 21 Painted Asphalt |
| 6 Painted Chess Board | 14 Community Table | 22 Fruit Trees & Berry Patch |
| 7 1/2 Basketball Court | 15 Water Play (Hose Supplied Water) | 23 Raised Seating Deck with Trees |
| 8 Sloped Lawn | 16 Decorative Flags & Catenary Lighting | 24 Movable Umbrellas & Chairs |

CREEKSIDE POP-UP

Vancouver, British Columbia | December 12, 2017

PERSPECTIVE VIEW



DESIGN PRINCIPLES

1. ENSURE A TEMPORARY CHARACTER.
2. MAKE THE SPACE FUN, COLOURFUL AND MULTI-PURPOSED.
3. SPACE SHOULD BE PREDOMINANTLY GREEN.
4. SPACE SHOULD BE INCLUSIVE, SERVE ALL AGES AND BE ACCESSIBLE FOR ALL.
5. SPACES SHOULD BE FLEXIBLE TO ACCOMMODATE DIFFERENT FUNCTIONS.
6. SPACES SHOULD BE SAFE AND SECURE.
7. SELECT MATERIALS AND PRODUCTS THAT CAN BE REUSED LOCALLY OR FOR THE FUTURE NORTHEAST FALSE CREEK PARK.
8. DESIGN FOR RESILIENCE AND EASE OF MAINTENANCE.

CREEKSIDE POP-UP

Vancouver, British Columbia | December 12, 2017

PROGRAMMING & PRECEDENTS



- PLAY COURT**
- 1/2 Basketball Court
- LAWN**
- Bocce
- Yoga
- Passive Play (ie. Frisbee, Ball Throwing)
- Picnics & BBQ
- GAME PLAY AREA**
- Ping Pong Tables
- Benches
- Evening Lighting
- ORCHARD GARDEN**
- COMMUNITY DINING**
- Harvest/Picnic Tables
- Evening Lighting
- URBAN BEACH**
- Seating Logs
- Volleyball Court
- Picnics & BBQ
- Hangout

- PAINTED GAMES**
- LAWN**
- Informal Play and Seating
- Summer Movie Nights
- Passive Play (i.e. Frisbee, Ball Throwing)
- Picnics & BBQ
- WATER PLAY**
- LAWN**
- Yoga
- Passive Play (e.g. Frisbee, Ball Throwing)
- Picnics & BBQ
- Bleachers for Seating & People Watching
- Hangout
- Movie Night



CREEKSIDE POP-UP

Vancouver, British Columbia | December 12, 2017