

1 - WELCOME

Thank you for coming to Clinton Park Renewal Open House 2!

Please review the display boards, take part in the activities, and share your comments and ideas.

We will use your input to develop a preferred park concept plan.

Overview

GOALS FOR TODAY:

1. Identify Clinton Park features and issues
2. Outline public feedback from Open House 1
3. Present two concept plans
4. Get your feedback about the plans

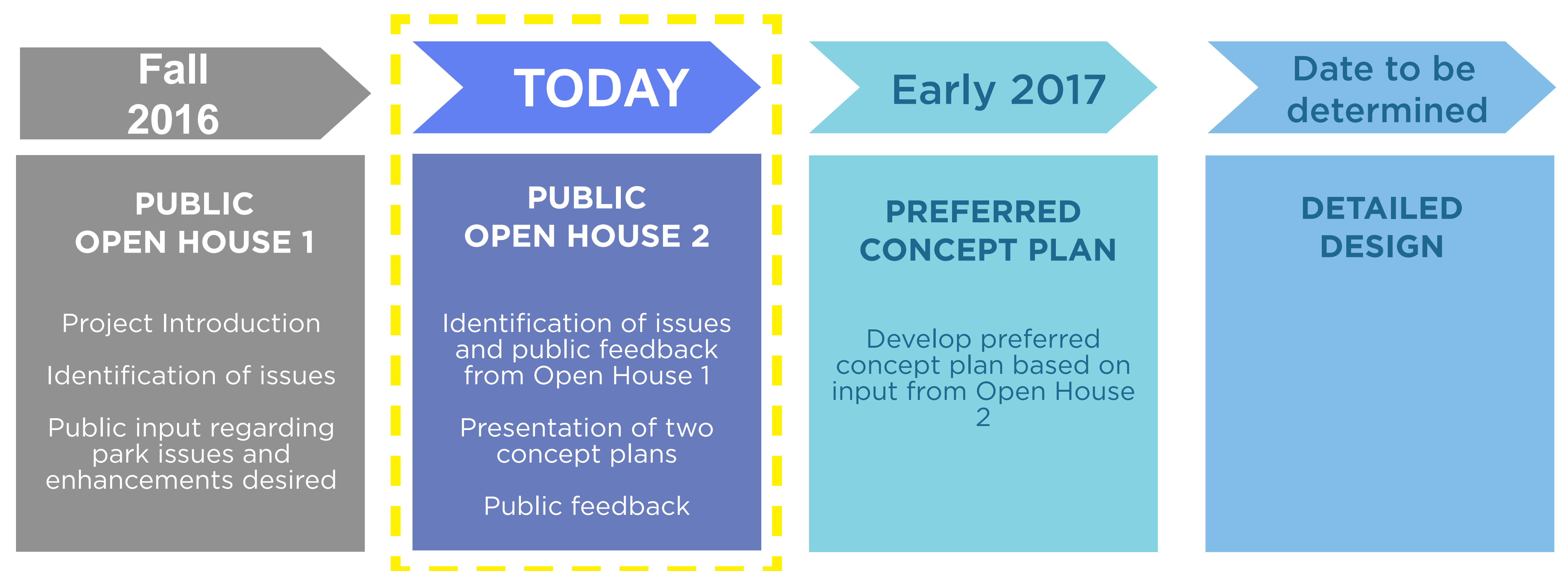
The Clinton Park Renewal project is located in the north-east corner of Clinton Park. This area currently includes a playground, a wading pool, a field house with washrooms, a basketball court, picnic tables, mature trees and lawn.

The area will be enhanced to better respond to user needs as well as improve site accessibility and safety.



Questions?

Speak to staff from the Vancouver Park Board, and ISL Engineering and Land Services, the park designers. Please fill out the feedback form, either tonight, or online at: Vancouver.ca/clinton-park



2 - PROJECT VISION AND GOALS

VISION

To upgrade the north-east corner of Clinton Park in response to community needs and improve park features, connectivity, accessibility, and public safety.



Introduce new park features



Promote community connections

GOALS

1. Introduce new park features
2. Promote community connections
3. Reflect community values
4. Improve safety
5. Enhance site accessibility



Reflect community values



Improve safety



Enhance site accessibility

3 - DESIGN CONSIDERATIONS

THE CLINTON PARK RENEWAL PROJECT WILL ADDRESS THE FOLLOWING ISSUES:

COMMUNITY USE

- Provide public amenities suitable for use by various community groups
- Support Hastings Community Centre's and Frog Hollow Community Centre's summer park programming
- Maintain passive greens space for multi-use and public events

UNIVERSAL ACCESSIBILITY

- Improve wheelchair and stroller access on paths, in picnic areas, and in the playground
- Replace bike racks
- Adjust steep pathway slopes

MULTI-GENERATIONAL ACTIVITIES

- Introduce playground equipment suitable for a variety of age groups
- Introduce park amenities for youth
- Introduce park amenities for older adults, such as exercise equipment, small-ball games court, or tai chi area
- Introduce multi-generational park amenities such as a community garden

PARK MAINTENANCE

- Consider long term maintenance and replacement costs
- Introduce durable hard-wearing materials
- Introduce low maintenance plants
- Retain healthy mature trees

CONNECTIVITY

- Improve connections to Slocan Street and Grant Street, with better pathways and defined entrances
- Improve connections between park features

PUBLIC SAFETY

- Introduce Canadian Standard Association approved, contemporary playground equipment
- Modify steep pathway slopes
- Remove blind corners around the public washroom building

WHAT WE HEARD

Additional design considerations were identified by the community in Open House 1. These are outlined below.

COMMUNITY AMENITIES

- Introduce a multi-use space for community gathering and activities
- Introduce a community garden
- Introduce outdoor exercise equipment

WATER PLAY

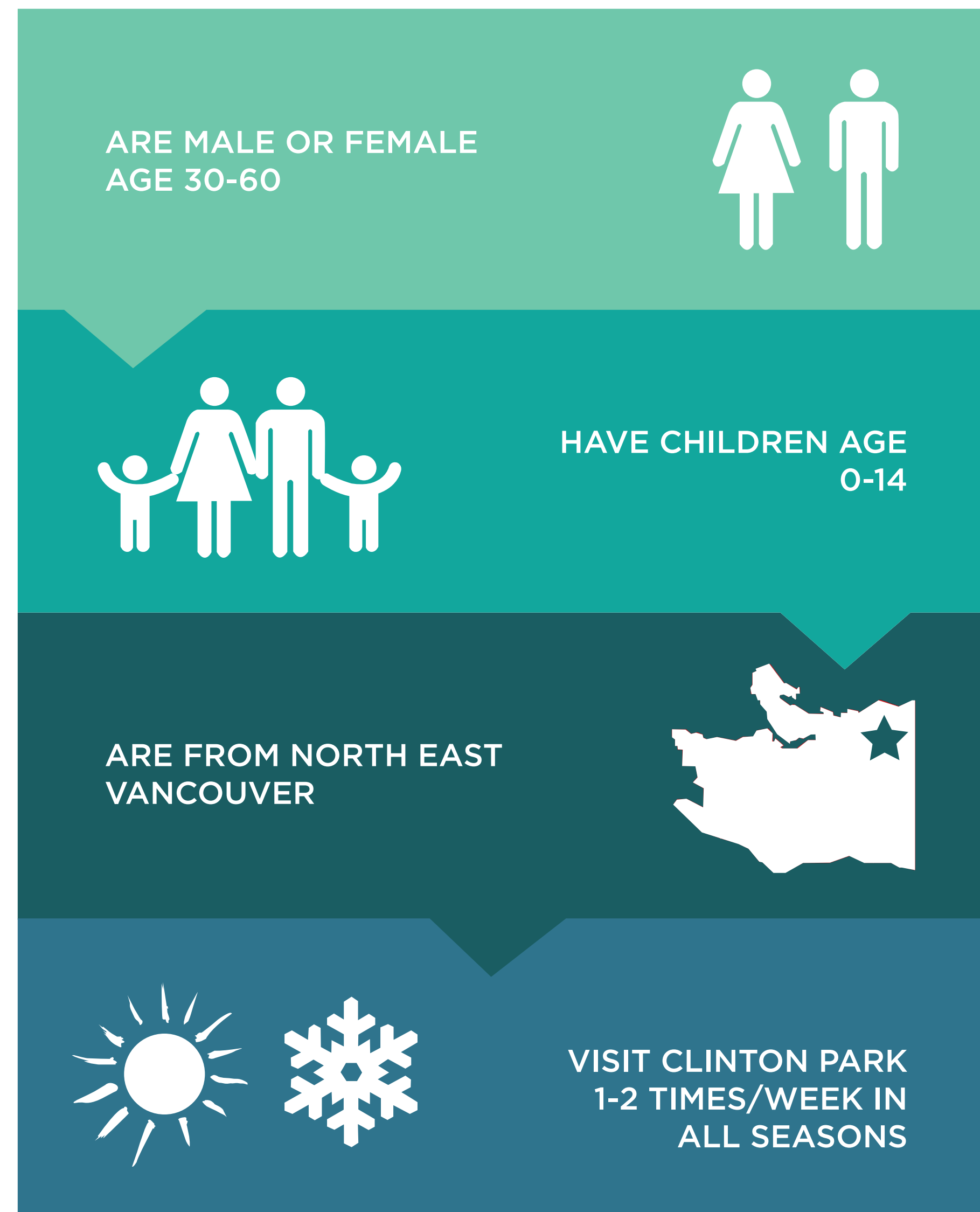
- Replace the wading pool with a water play feature that can be used all summer (spray park or fountain)

COMFORT & SAFETY

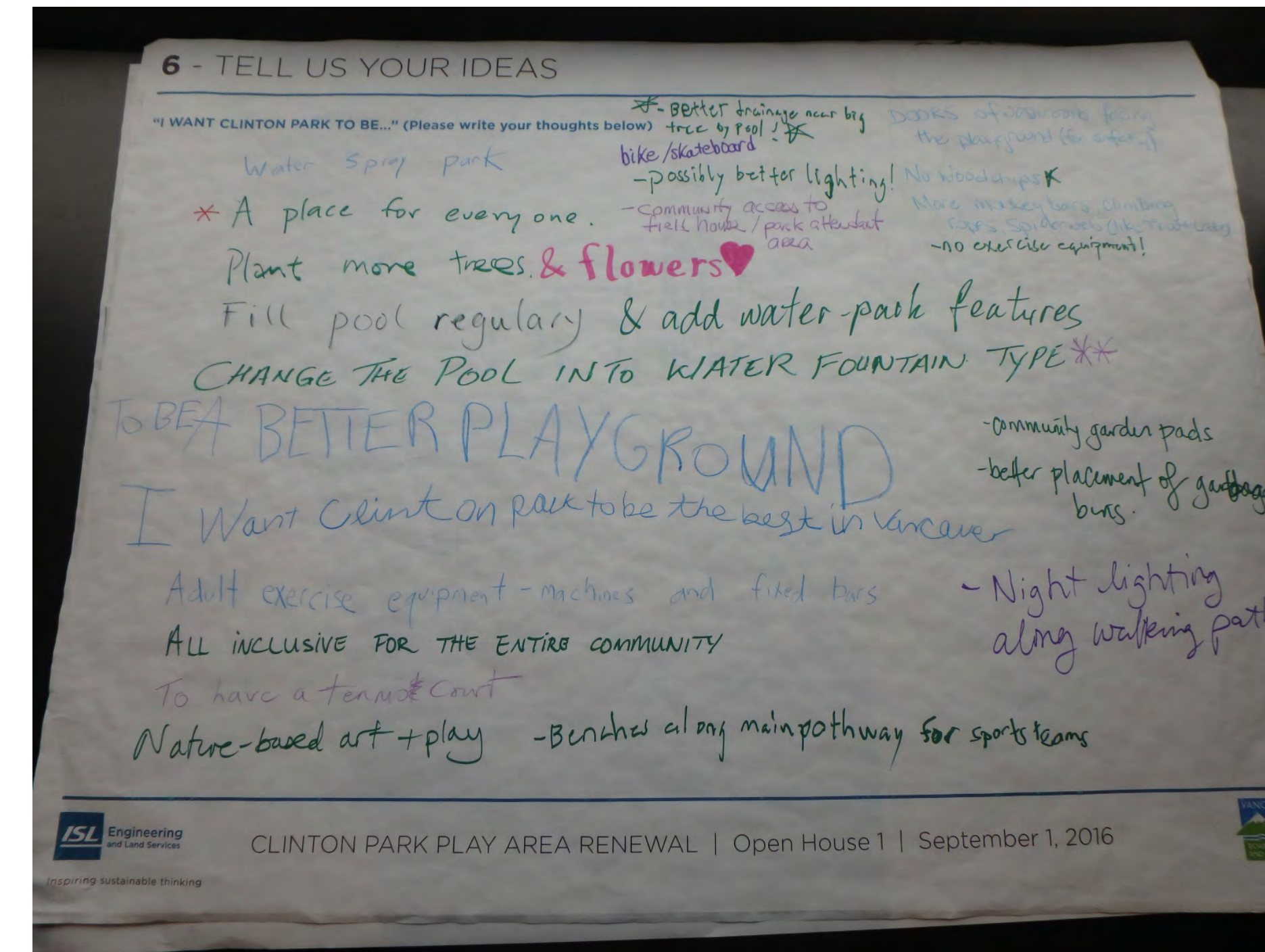
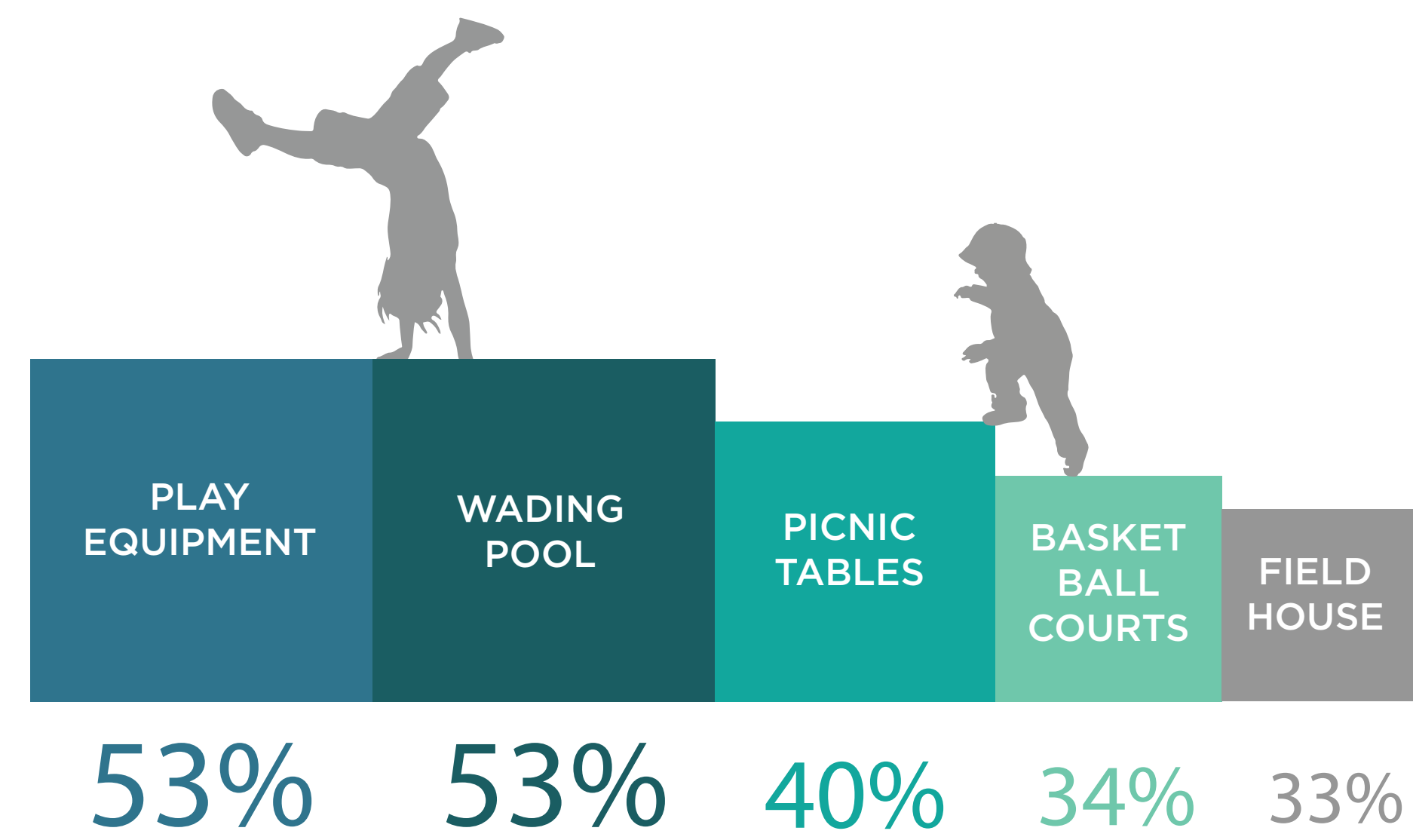
- Improve drainage in the project area
- Introduce more seating and picnic facilities
- Introduce a covered structure for sun and rain protection
- Retain the existing trees and add more

4 - WHAT WE HEARD: Feedback from Open House 1

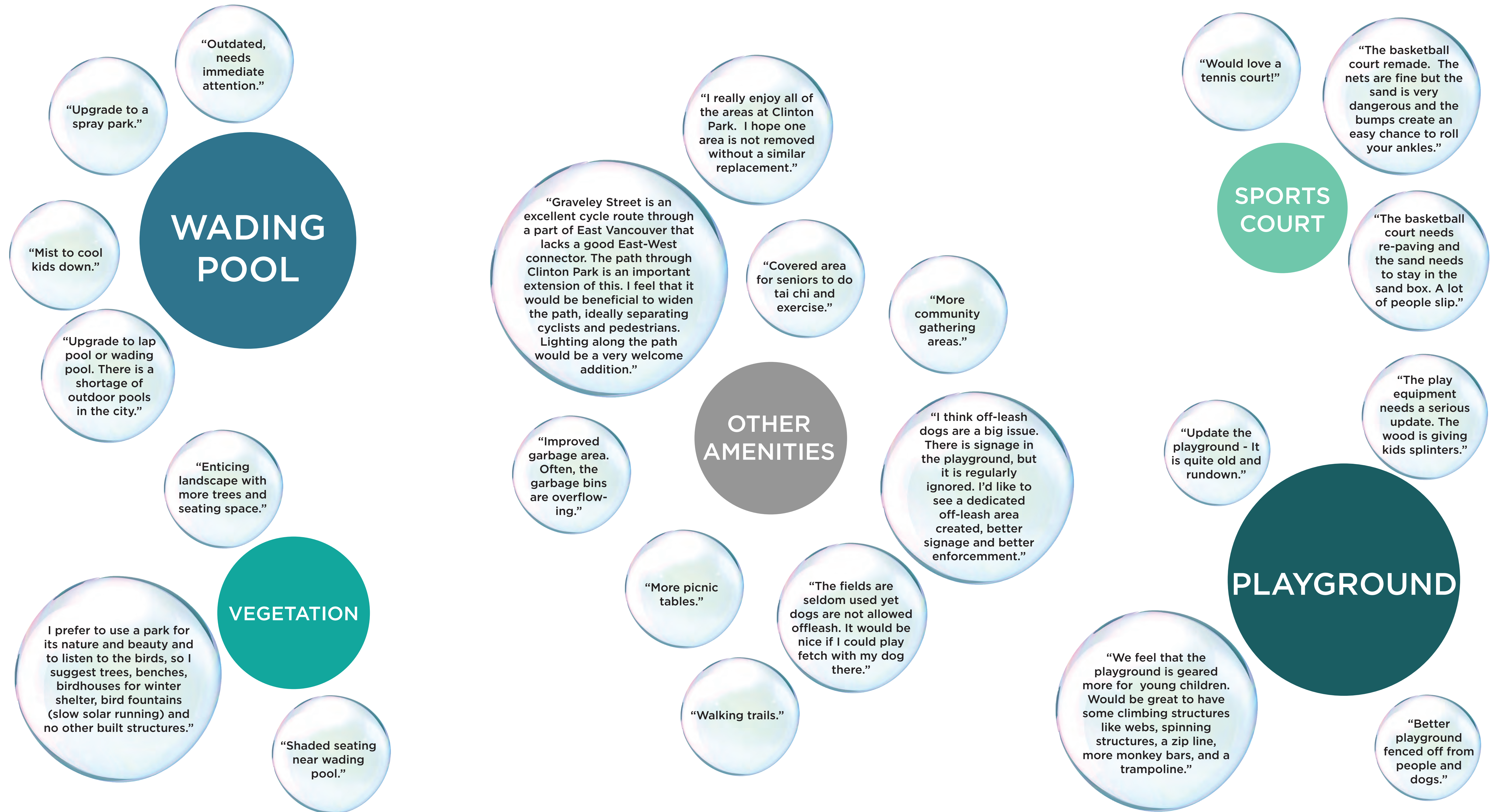
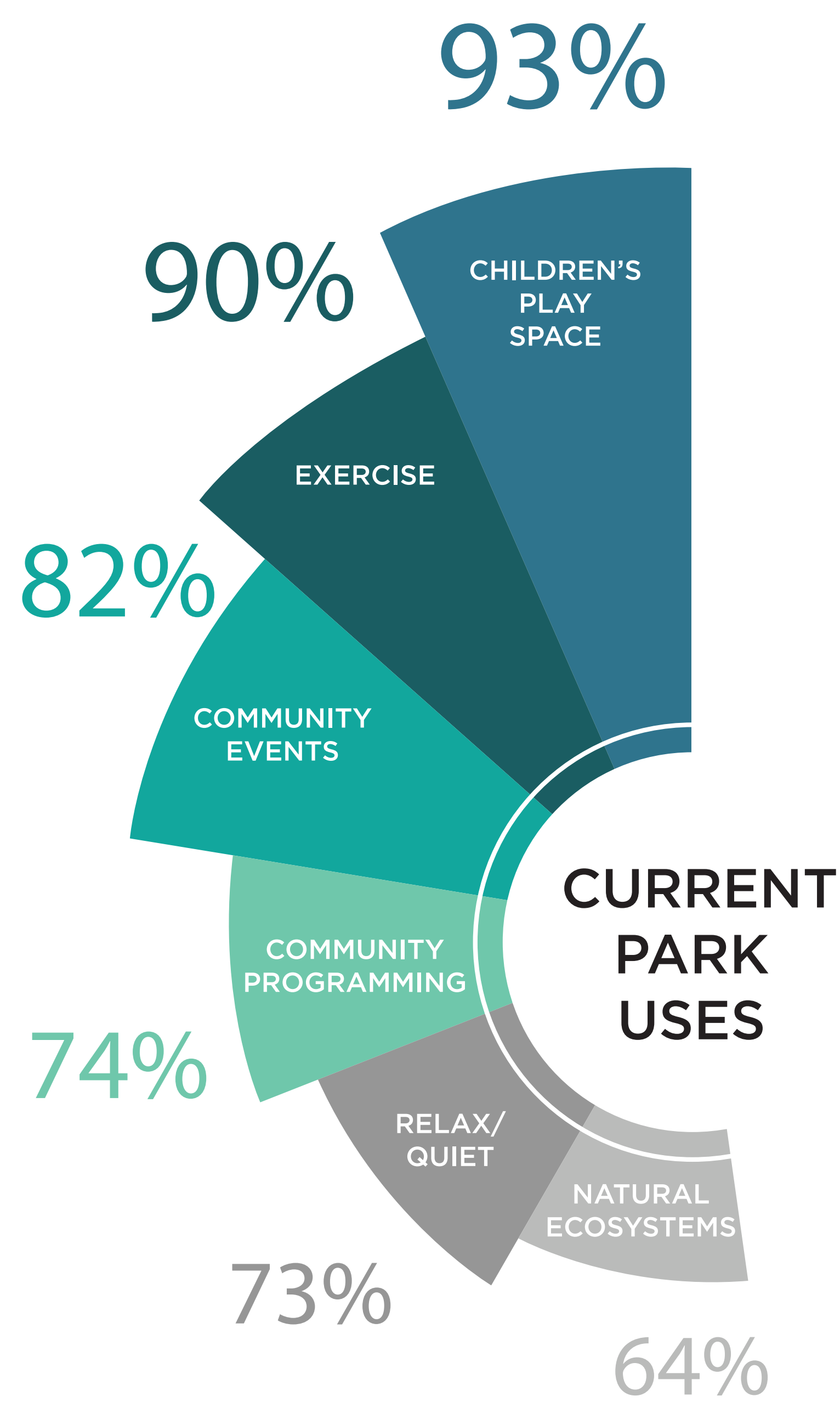
WHO ARE YOU? THE MAJORITY OF RESPONDENTS:



WHAT NEEDS IMPROVEMENT IN THE PARK?



WHAT IS THE ONE FEATURE YOU FEEL NEEDS THE MOST IMPROVEMENT?



5 - PROPOSED CONCEPT PLAN 1

“URBAN ADVENTURE PLAY”

This concept plan focusses on community interaction and urban adventure play.

The plan features:

- “Urban adventure” themed playground
- Replacing the wading pool with an in-ground water play feature
- Multi-use community plaza
- Community garden
- Half sports court with kids’ play area
- New seating and picnic area
- New trees and lawn areas



WASHROOM ACCESS PATH

GAME AREA



MULTI USE SPORTS COURT

Basketball half court with a kids' play area and edge benches

PLAY AREA PERIMETER SEATING

Benches in path alcoves

NEW PATHS

To connect the new park features and the surrounding park and sidewalks



COMMUNITY GARDEN

Raised garden beds in a fenced area



COMMUNITY PLAZA

Multi-use paved area with picnic & activity tables

ACCESSIBLE ENTRY WALKWAY



MULTI-USE PLAZA

In-ground water play feature
Paved for larger community events

NEW SHADE TREES



PICNIC TABLES

Which concept do you like better?

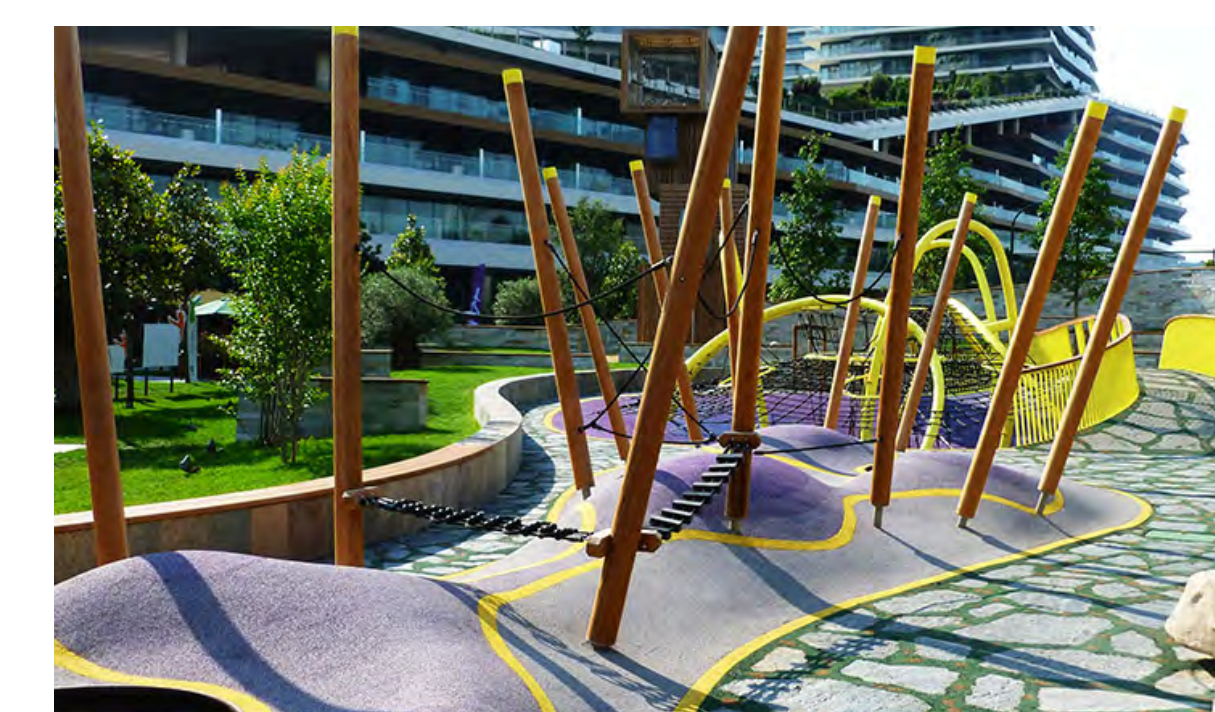
Place a sticky dot below if you like this one.



URBAN ADVENTURE PLAYGROUND

All ages, interactive, and group focused play equipment & play elements
Conventional swings, slides, climbers and springer toys

Rubberized surfacing for all season play



*water play feature subject to the finding of “Vansplash” report and Vancouver Park board approval (<http://vancouver.ca/parks-recreation-culture/vansplash-aquatics-strategy.aspx>)

6 - PROPOSED CONCEPT PLAN 2

“NATURE PLAY”

This concept plan focusses on access to and engagement with nature.

Features:

- “Nature play” themed playground
- Replacing the wading pool with an in-ground water play feature
- Multi-use community plaza
- Community garden
- Informal play sports court
- New seating and picnic area
- Trees and lawn areas



SPORTS COURT

Informal full court with new paving and benches



WATER PLAY CHANNEL*

In-ground water channel with water sprays, boulders and bridges

NEW PATH

To connect the new park features and surrounding park and sidewalks



WASHROOM ACCESS PATH



COMMUNITY GARDEN

Raised garden beds in a fenced area



COMMUNITY PLAZA

Multi-use paved area with picnic and activity tables

LANDSCAPE BUFFER

Trees, lawn and benches

ACCESSIBLE ENTRY WALKWAY

PLAY AREA PERIMETER SEATING

Benches in path alcoves

NEW SHADE TREES



PICNIC TABLES

Which concept do you like better?

Place a sticky dot below if you like this one.



NATURE PLAY PLAYGROUND

All ages, natural playground equipment and play elements
Non-prescriptive, imaginative play

*water play feature subject to the finding of “Vansplash” report and Vancouver Park board approval (<http://vancouver.ca/parks-recreation-culture/vansplash-aquatics-strategy.aspx>)

7 - PLAYGROUND & SPORTS COURT

Playground Elements

The new playground will feature play elements for children of all ages. Options for the playground elements are shown here.

Note that the images shown are generic. The style of the play elements will be appropriate for either “Urban Adventure” or “Nature Play” depending on which concept plan is preferred by the community.



Swings



Slides



Climbers



Springer toys

What do you like?

Put sticky dots beside the top five playground elements you would most like to see at Clinton Park.



Playhouse



Seesaws



Play tables



Play mounds



Water play



Balance play



Music play



Quiet area

Sports Court

A new sports court will provide court play for children, youth and adults. Options for the sports court features are shown here.

What do you like?

Put sticky dots beside the one sport court feature you would most like to see at Clinton Park.



Informal play sports court



Multi-use sports court



Half basketball court



Play court area

8 - NEXT STEPS...

THANK YOU FOR COMING!

We want to hear from you; please fill out the comment form tonight or complete it online by February 2. Stay tuned for information about the next steps for this project.

Please visit: Vancouver.ca/clinton-park

