

7 FORMER CURLING CLUB SITE

SITE LOCATION



An option for a full sized adult field was initially explored but was found to be not feasible due to the need for a retaining wall along Midlothian, removal of some significant trees and relocation of the adjacent baseball diamond.

Under consideration (Option 2) is for youth soccer to relocate from the full size adult Dinmont Field, to a new youth field on the site of the former Vancouver Curling Club, with adult soccer then using the Dinmont field.

KEY FEATURES- OPTION 1

- accommodates 50 additional parking stalls if the proposed parking variance is not approved
- requires minimal new construction or demolition
- retains mature existing trees
- drainage improvements for passive recreation
- no new soccer field accommodated
- parking location is not optimum
- 8 trees removed

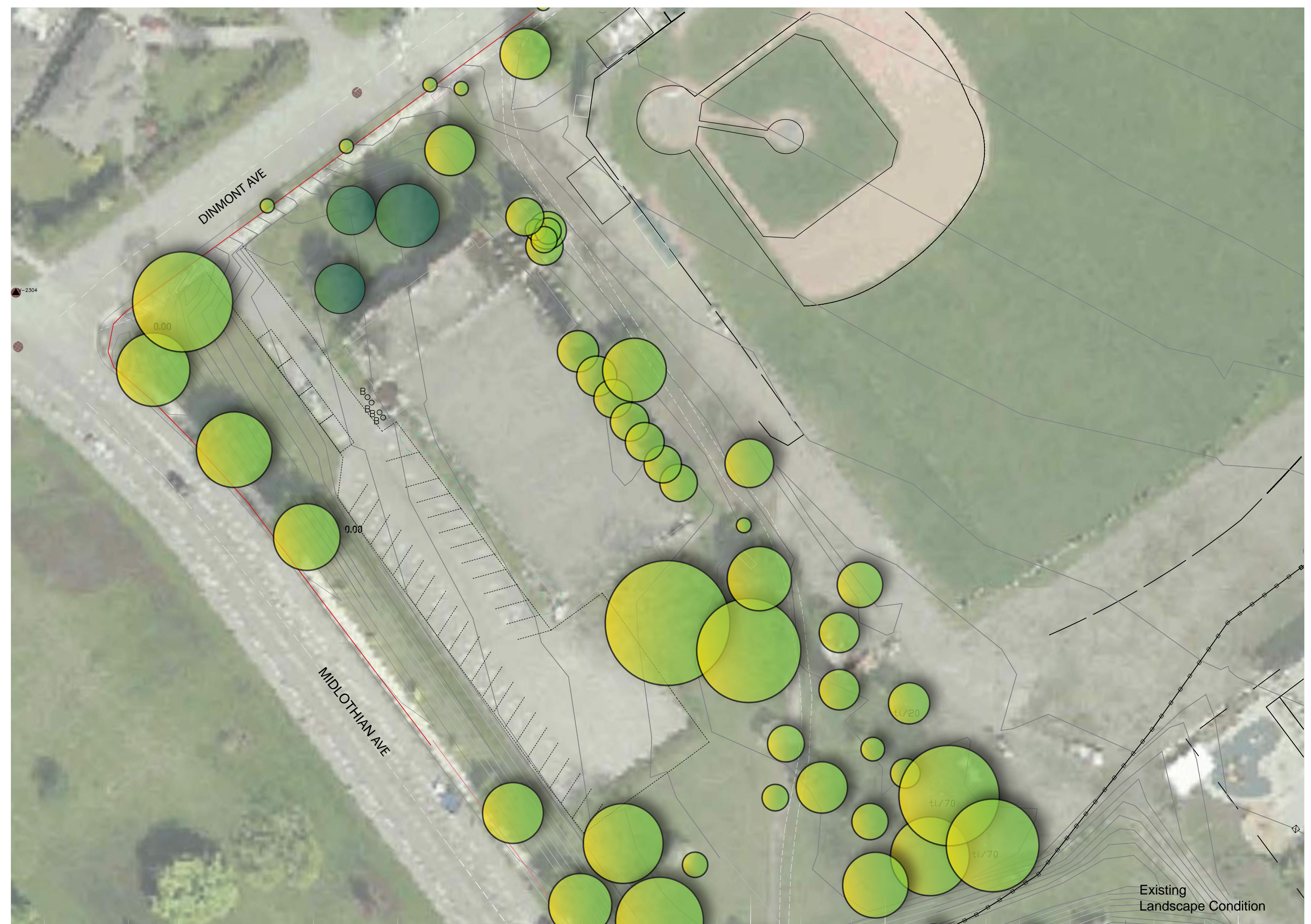


KEY FEATURES- OPTION 2

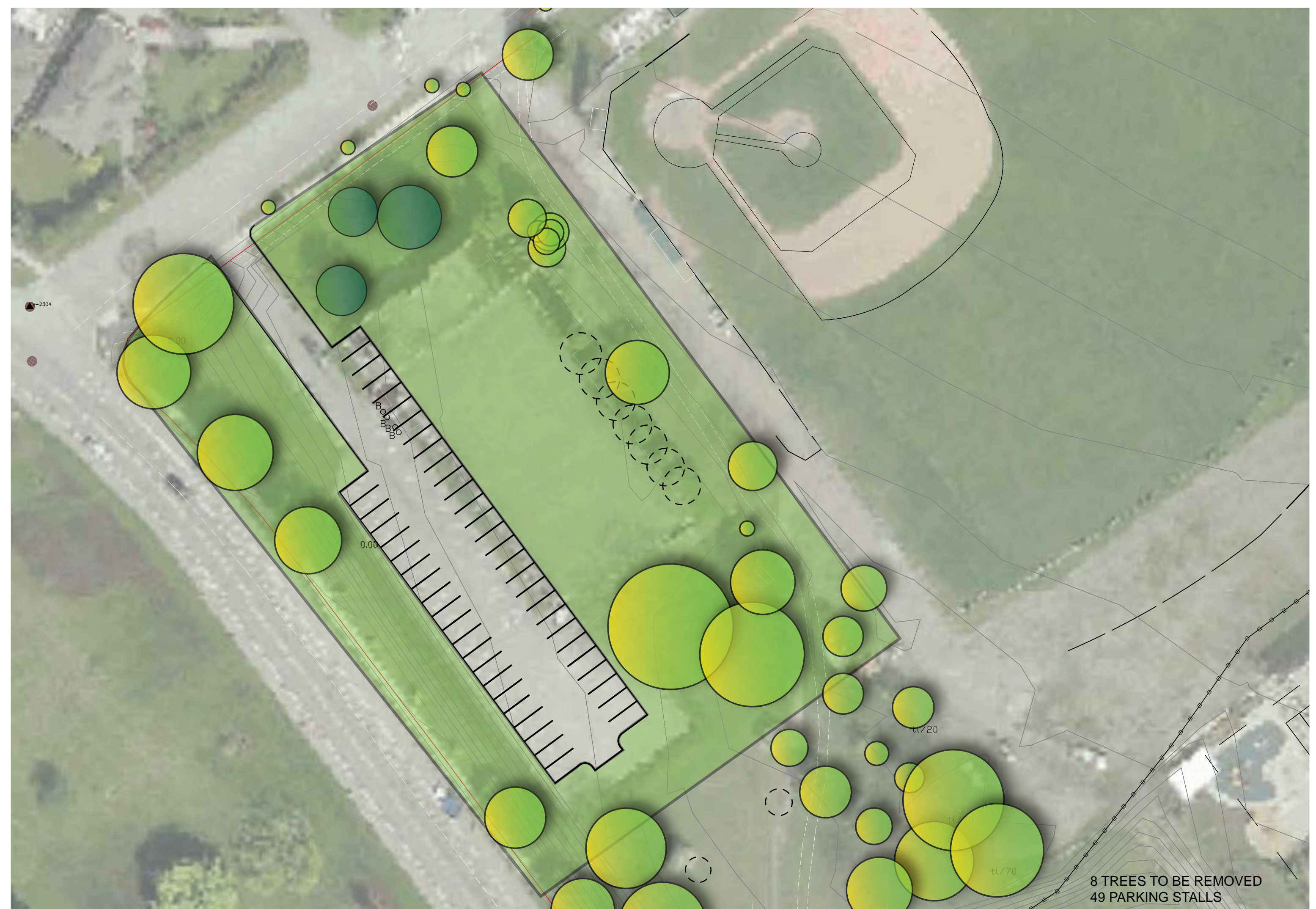
- accommodates a youth and optional mini-soccer field
- retains existing mature trees
- addition of spectator seating under tree canopy
- existing baseball diamond not impacted
- no retaining wall required
- minimal trees affected



EXISTING SITE AREA



OPTION 1- PARKING + OPEN SPACE



OPTION 2- YOUTH SOCCER FIELD W/ OPTIONAL MINI-SOCCER

