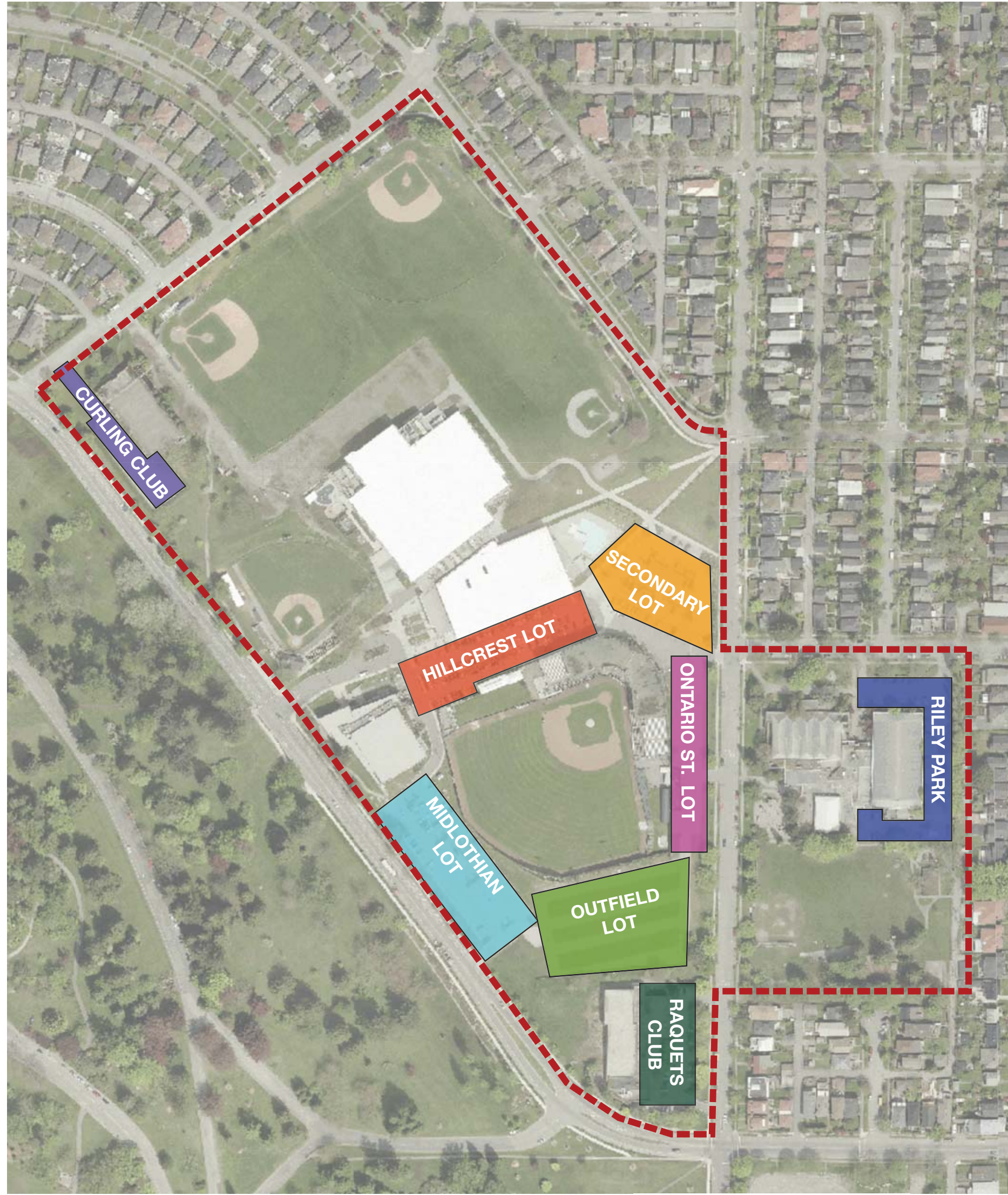


# 5 PARKING SUPPLY + DEMAND

## Key Parking Map



## Parking Summary

The CD-1 rezoning for Hillcrest Centre in 2006 states that 920 parking stalls are to be provided at the Hillcrest and Riley Park sites.

An updated parking study indicates that the existing number of parking stalls are sufficient for day to day activities, but insufficient for Nat Bailey Stadium game days. The study also emphasizes a need for pedestrian and vehicle circulation improvements.

In order to accommodate game day needs, and to reduce parking pressure on local streets, 50 new parking stalls are proposed at gravel lot at Hillcrest Park and 50 parking stalls will be retained at Riley Park. A total of 745/ 795 parking stalls will be available at build-out, and the City indicates support for this approach with the supporting study. This helps protect green space.

Table 1: On-Site Parking Supply Summary

	Existing Spaces	Proposed Spaces
Hillcrest Lot	118 stalls	118 stalls
Secondary Lot	120	120
Midlothian Lot	132	132
Outfield Lot	205*	255
Ontario Street Lot	60	60
Vancouver Racquet Club	60	60
Riley Park	89	50
Vancouver Curling Club	50 stalls	50 (option 1) 0 (option 2) * Refer to Board 7
<b>Total</b>	<b>834</b> (629 when Outfield lot gates are closed)	<b>745/795</b> stalls

\* Note: The Outfield parking lot is typically closed due to drainage issues.

## Survey Results for:

**WEEKDAY** (\*outfield lot closed)

Peak Occupancy:  
Monday at 7pm  
Total Vehicles: 395

**77%** of 514 stalls occupied

**SATURDAY** (\*during Farmers' Market)

Peak Occupancy:  
Saturday at 11am  
Total Vehicles: 521

**72%** of 719 stalls occupied

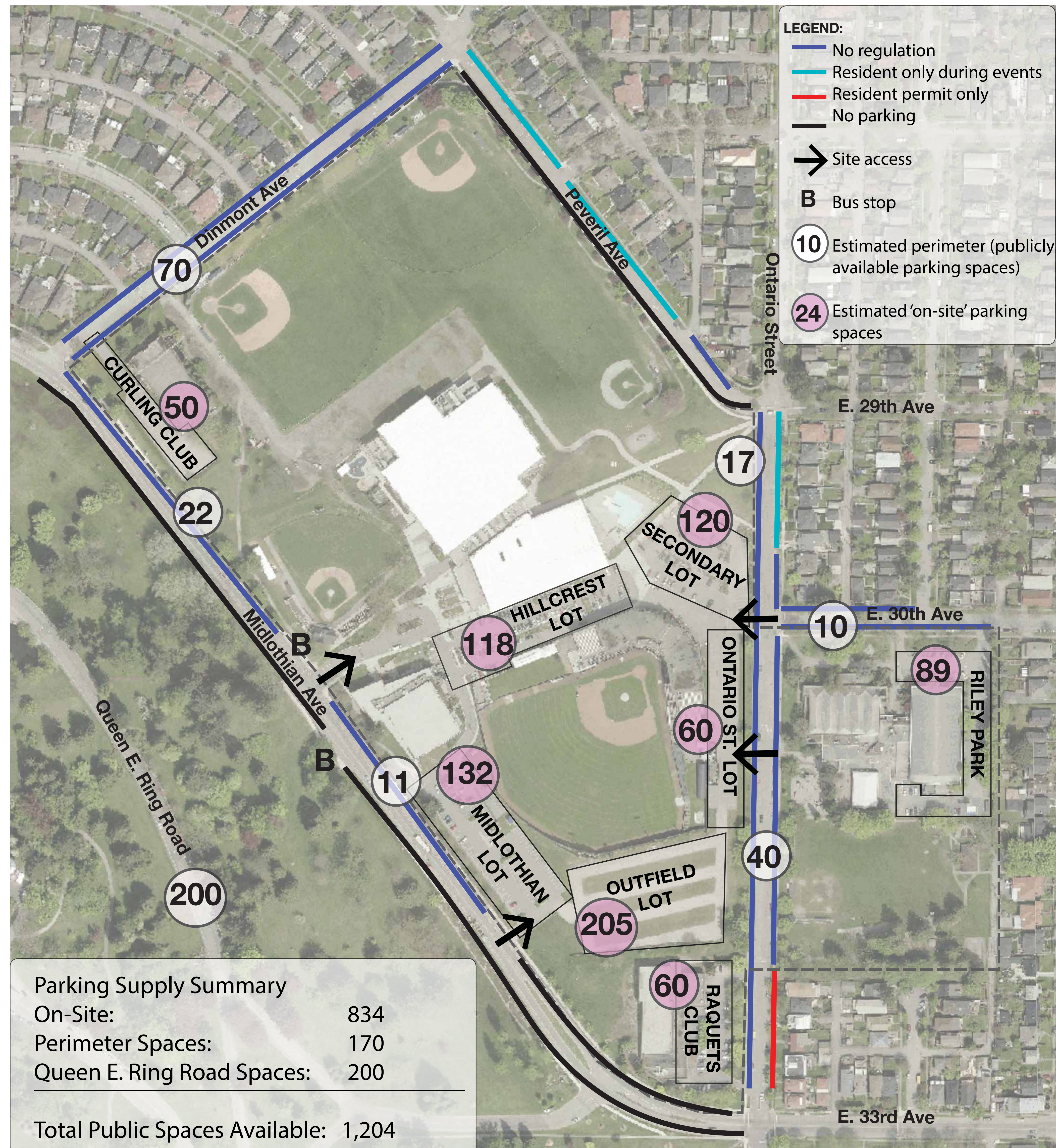
**SUNDAY** (\*outfield lot closed)

Peak Occupancy:  
Sunday at 11am  
Total Vehicles: 402

**78%** of 514 stalls

Note: If the Outfield Lot were improved and open as recommended, the weekday and Sunday occupancy percentages would be considerably lower.

## Map of Existing Parking Supply



# 6 TRAFFIC CIRCULATION

## A. ONTARIO STREET

1- In line with the City of Vancouver's Transportation 2040 Plan, this section of Ontario Street is a priority for all ages and abilities cycling. Planned upgrades could include closure to motor vehicles or other permanent traffic diversion measures south of E 30th Avenue. This would reduce vehicular traffic along this designated bicycle route and allow for easier walking connections between Hillcrest and Riley Parks.

- The City's Active Transportation Branch will be leading a separate public process to discuss the nature of these changes and the future of the temporary diverter at Ontario and E 29th Avenue.

2- Add south Ontario Street access

## B. EAST LOT

1- Redesign pedestrian crossing/ parking lot connection. Consider alternative surface materials and colors.

2- Retain two-way connection between Hillcrest and West parking lot.

## C. HILLCREST LOT

1- Hillcrest Lot to be converted to one-way, counter clockwise circulation.

2- Add pavement marking arrows to indicate one-way circulation.

- Allows for more comfortable and efficient circulation within parking lot and at the lot's west entry.
- One-way loop results in easier control of Hillcrest lot during Nat Bailey events.

3- Introduce "No Entry" sign.

## D. MIDLOTHIAN LOT

1- Convert to one-way southbound traffic flow.

2- Introduce "Entry" sign to Midlothian lot.

3- Add pavement-marking arrows to indicate one-way circulation.

- More space for pedestrian linkage between parking lots.
- Minimizes vehicle movements near Hillcrest lot entry.

## E. OUTFIELD LOT

1- Open Outfield lot gates to allow two-way circulation through Outfield lot.

2- Open at least one drive aisle in Outfield lot for circulation.

## F. ADDITIONAL STALLS

1- Expand Outfield lot to accommodate 50 additional parking stalls.

