

What We've Heard - Questionnaire



Public Engagement Event #2

The Vancouver Park Board hosted a second round of public engagement events in December 2013 for the John Hendry Park Master Plan.

On December 3rd over 80 members of the community participated in a design workshop and provided written responses to questions posed in a discussion guide. The following day, two preliminary concept plans (option A and option B) were developed and displayed at a public open house. Over 460 individuals responded to the feedback questionnaire during the two weeks following the design workshop and open house.

PUBLIC INPUT SUGGESTED THE PRIORITY IMPROVEMENTS FOR JOHN HENDRY PARK ARE:

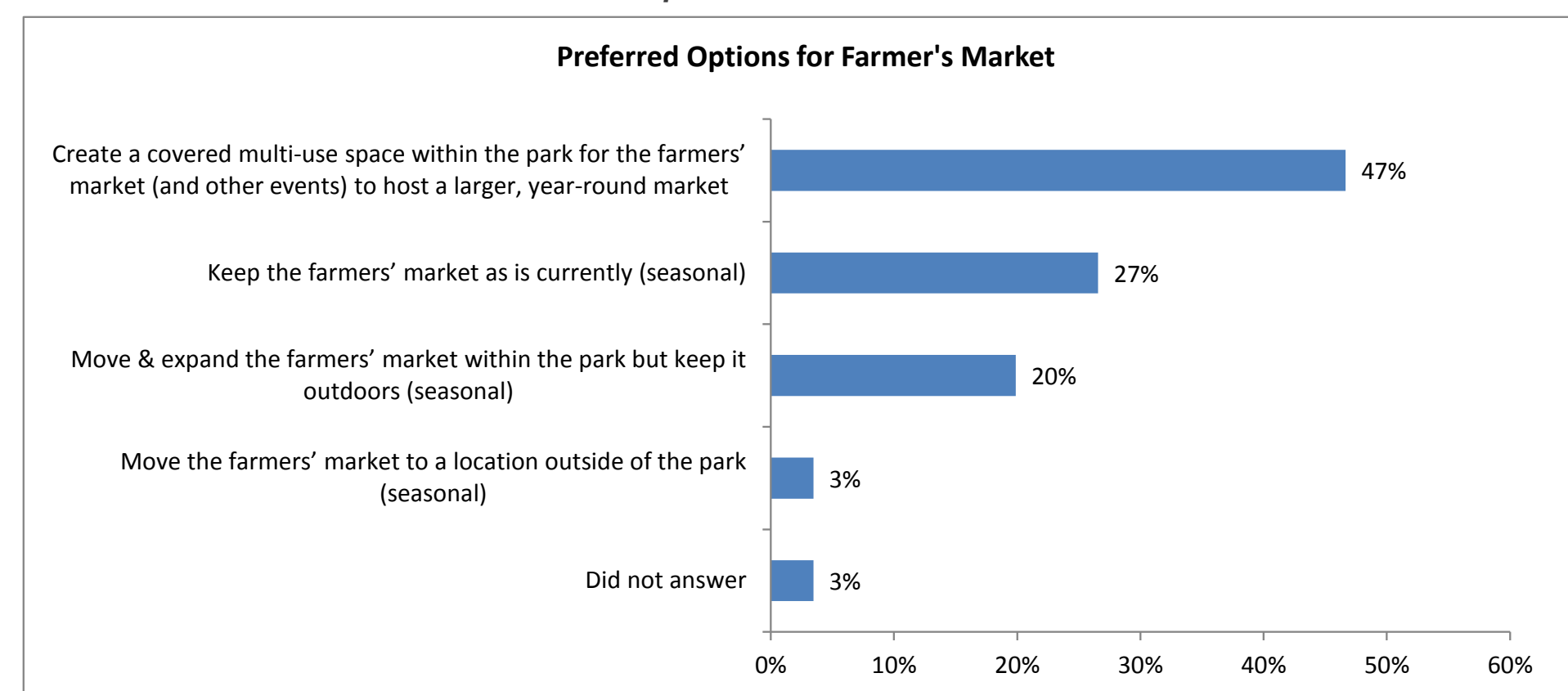
1	2	3	4	5
Natural elements/ improvements	Farmers' market upgrade	Dog off-leash area	Bike path upgrades	Stormwater
General naturalization, new natural areas/wildlife habitat refuges, tree buffers, constructed wetland, remove invasives, restored bog, daylighted streams, improved lake water quality/flow	<ul style="list-style-type: none"> Provide power/water for farmers' market Upgrade farmers' market, relocate to permanent covered multi-use space next to the community centre 	<i>Delineate the extents of the dog off-leash area with a combination of vegetation buffers, low fencing and/or signage</i>	<ul style="list-style-type: none"> General upgrades/unspecified New perimeter/commuter cycle path 	<i>Improve drainage, stormwater treatment, outfall to lake</i>
				Trail Improvements
				New Washrooms

The following reflects feedback on 3 complex issues identified during the public engagement events.

PREFERRED DIRECTIONS FOR THE FARMERS' MARKET:

- 1** Create a covered multi-use space within the park
- 2** Keep the farmers' market as it is currently
- 3** Move & expand the farmers' market within the park but keep outdoors

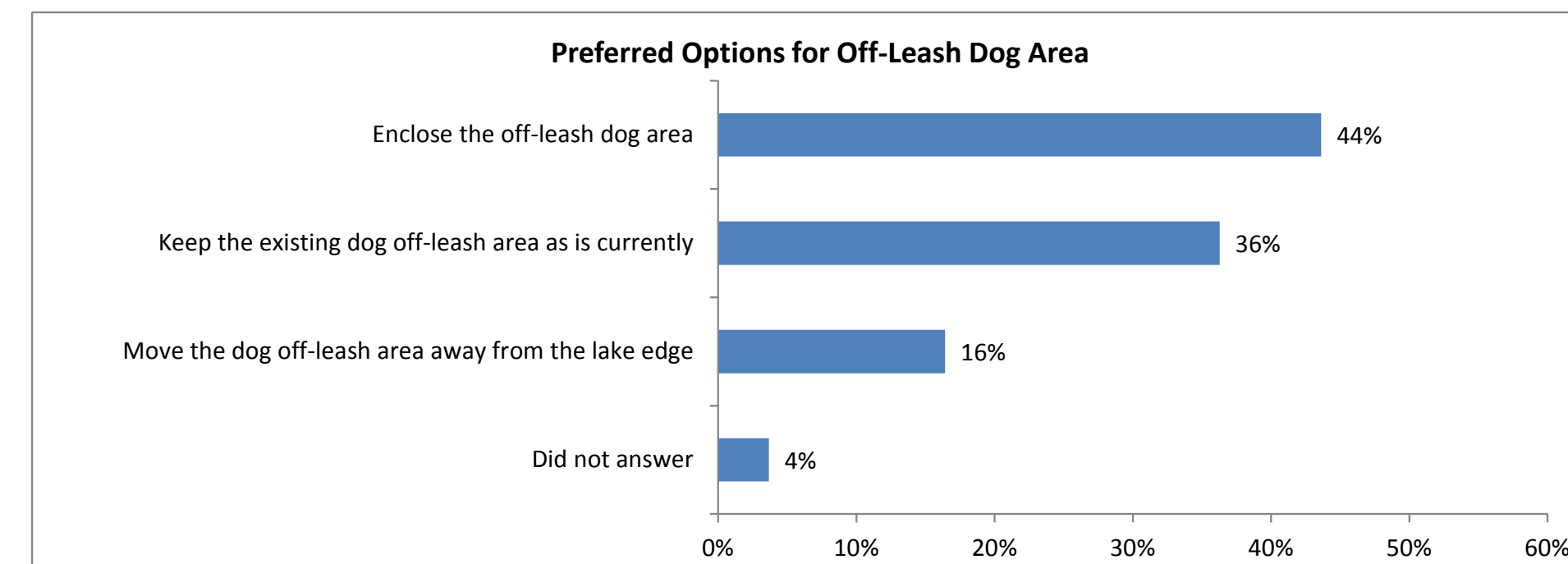
Preferred Options for Farmers' Market



PREFERRED DIRECTIONS FOR THE DOG OFF-LEASH AREA:

- 1** Enclose the dog off-leash dog area
- 2** Keep the existing dog off-leash area as it is currently
- 3** Move the dog off-leash area away from the lake edge

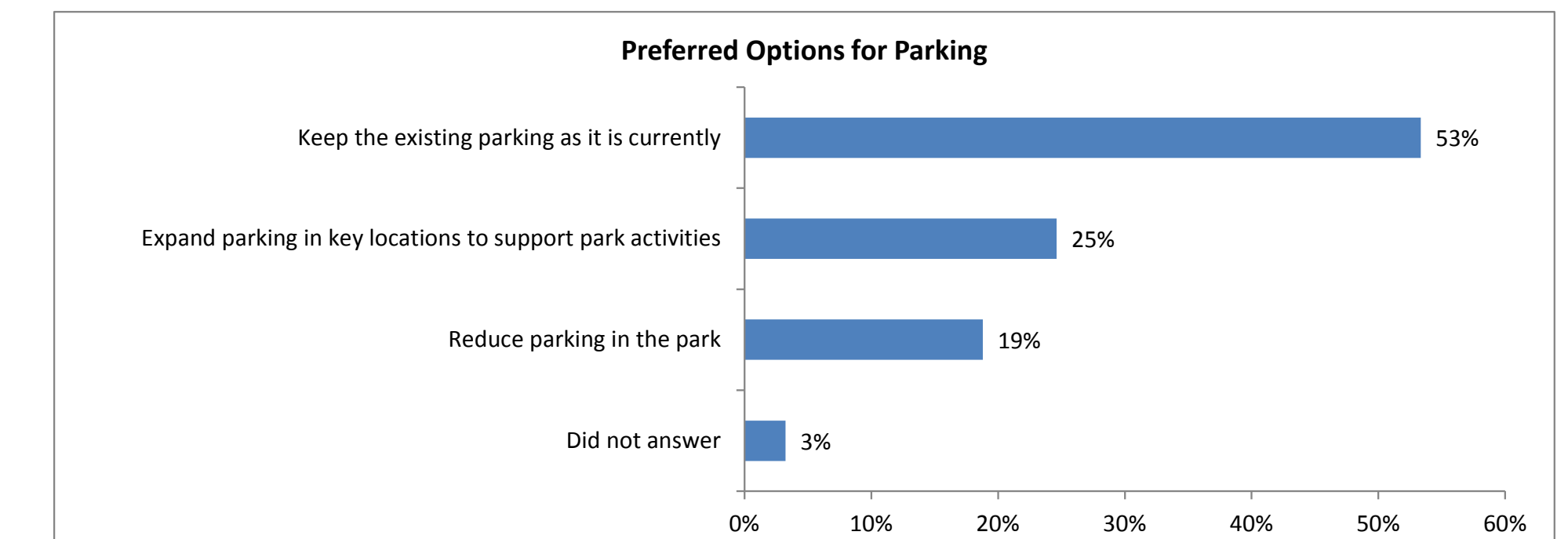
Preferred Options for the Dog Off-leash Area



PREFERRED DIRECTIONS FOR PARKING:

- 1** Keep the existing parking as it is currently
- 2** Expand the parking in key locations to support park activities
- 3** Reduce parking in the park

Preferred Options for Parking



What We've Heard - Questionnaire

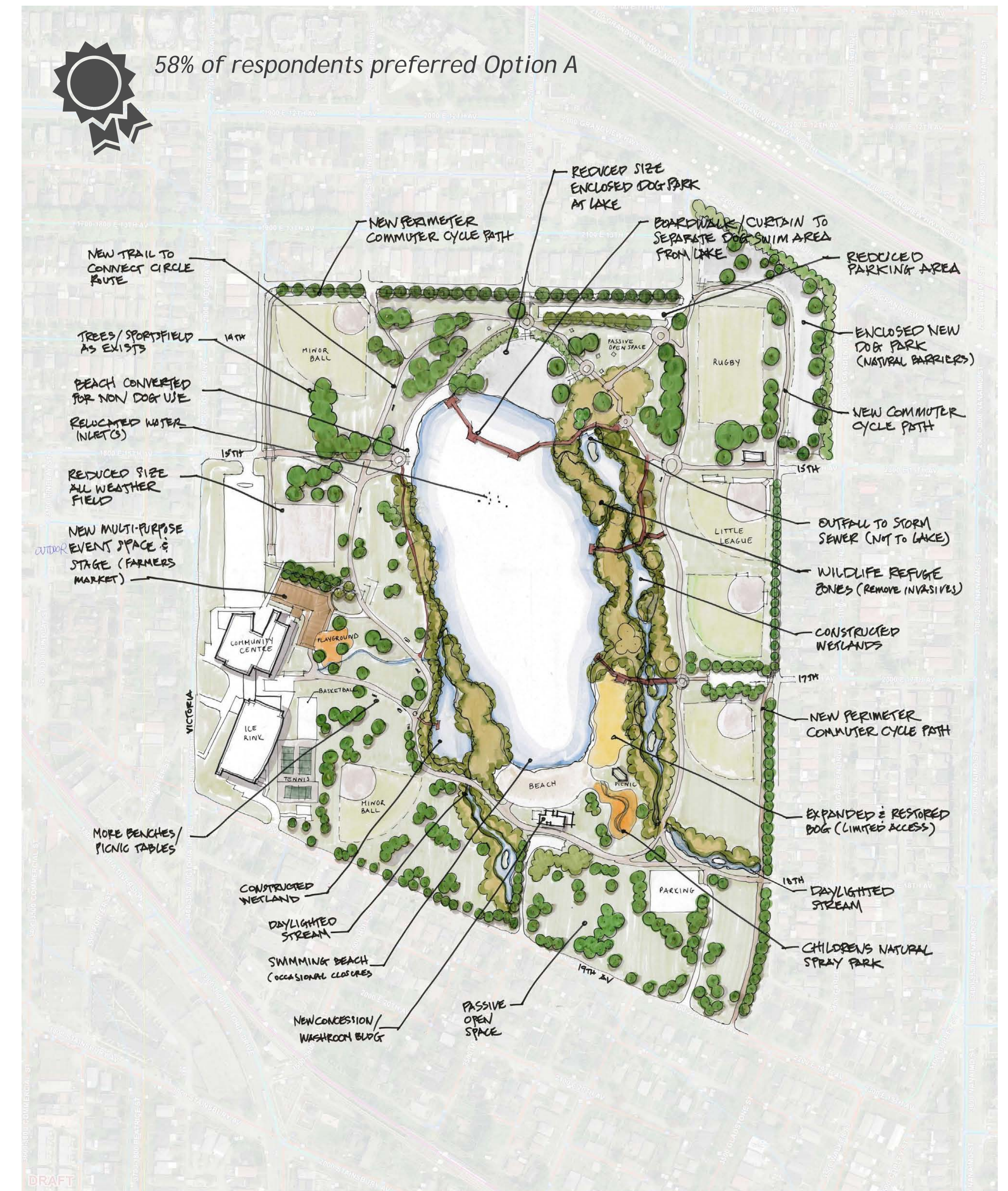
Preliminary Concept Plan - Option A Feedback

THE TOP 3 FEATURES PEOPLE LIKED MOST ABOUT OPTION A:

- 1 Natural Elements**
 - daylighted streams
 - restored bog
 - constructed wetlands
 - wildlife refuge areas
 - natural look and feel
- 2 Covered Multi-purpose space/stage**
 - for year-round farmers market and community events
- 3 Dog off-leash area**
 - separated/enclosed area for dogs that includes water access and new off-leash area for dogs in the northeast corner

THE TOP 3 FEATURES PEOPLE LIKED LEAST ABOUT OPTION A:

- 1 Multi-purpose stage/farmers' market**
 - space too small
 - no physical structure for the market
 - not covered
 - dislike market location
 - too crowded next to community centre
 - parking issues
 - too close to the playground, dislike stage/market, etc.
- 2 Dog off-leash area**
 - area is too small and fragmented
 - less beach access
 - dislike fence
- 3 Reduced parking**
 - not enough parking for dog area and farmers' market/community centre
 - will increase neighbourhood parking issues



Option A

What We've Heard - Questionnaire

Preliminary Concept Plan - Option B Feedback

THE TOP 3 FEATURES PEOPLE LIKED MOST ABOUT OPTION B:

1 Natural elements

- new naturalized areas
- restored bog
- constructed wetlands
- daylighted streams
- habitat refuges
- removed invasives
- tree buffers

2 New facilities

- concession and washrooms at the south end
- new washrooms at the north end
- drinking fountains

3 Interpretive boardwalks

THE TOP 3 FEATURES PEOPLE LIKED LEAST ABOUT OPTION B:

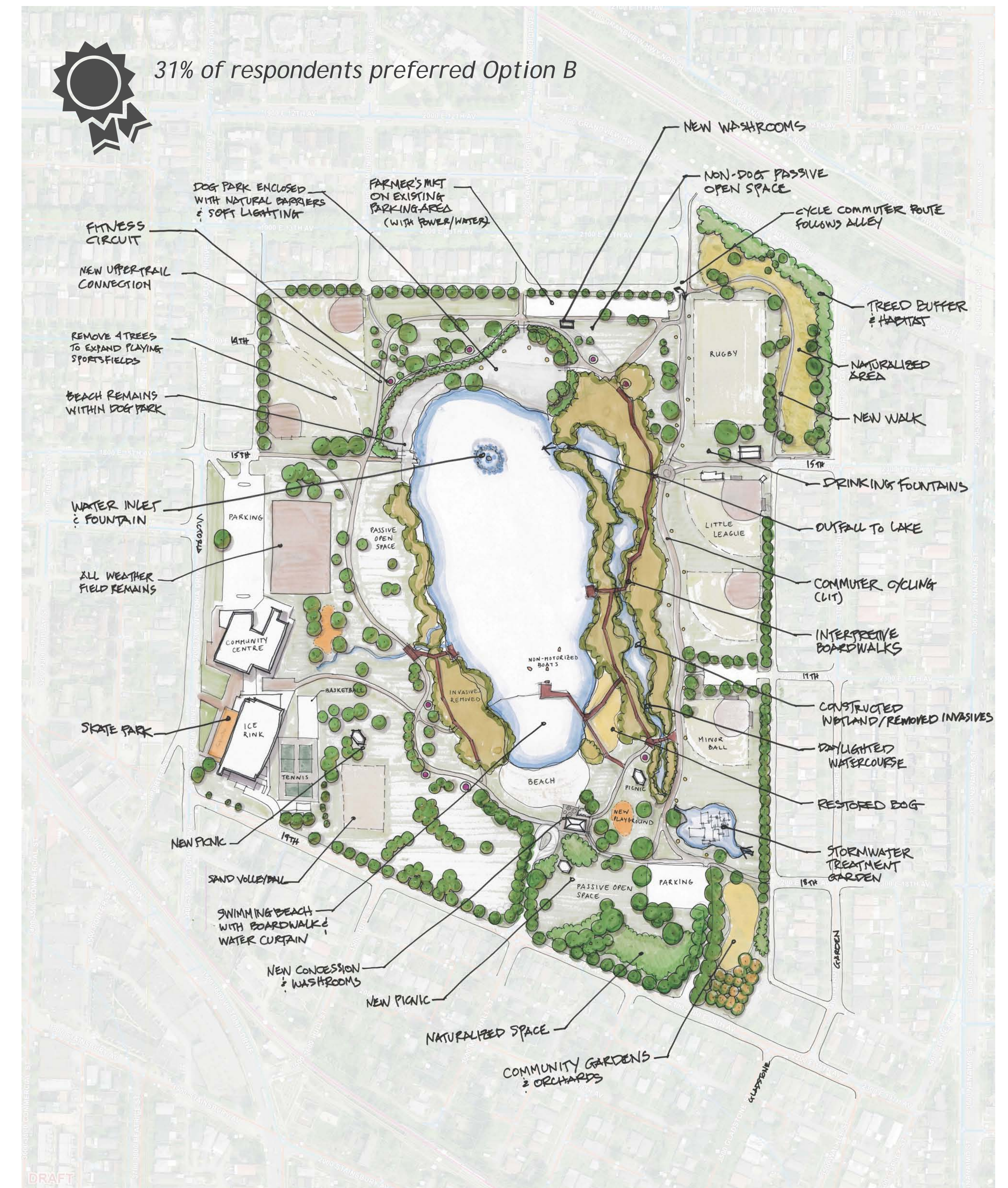
1 Farmers' market

- dislike location
- too small
- impacts to neighbours
- lack of permanent covered structure

2 Dog off-leash area

- dog area too large
- remove dog areas altogether
- natural barriers not effective
- dislike for dog swim area and beach access
- conflicts with wildlife habitat

3 Tree Removal for Field Expansion



Option B

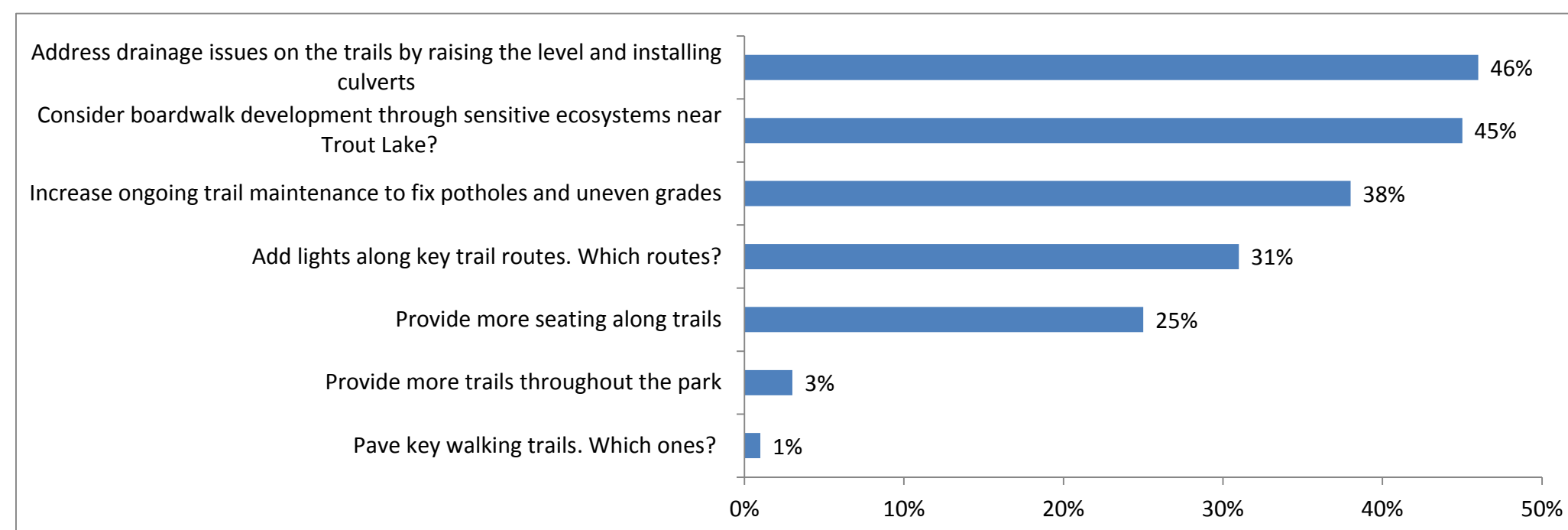
What We've Heard - Discussion Guide



TOPIC 1: CONNECTIONS & ACCESS

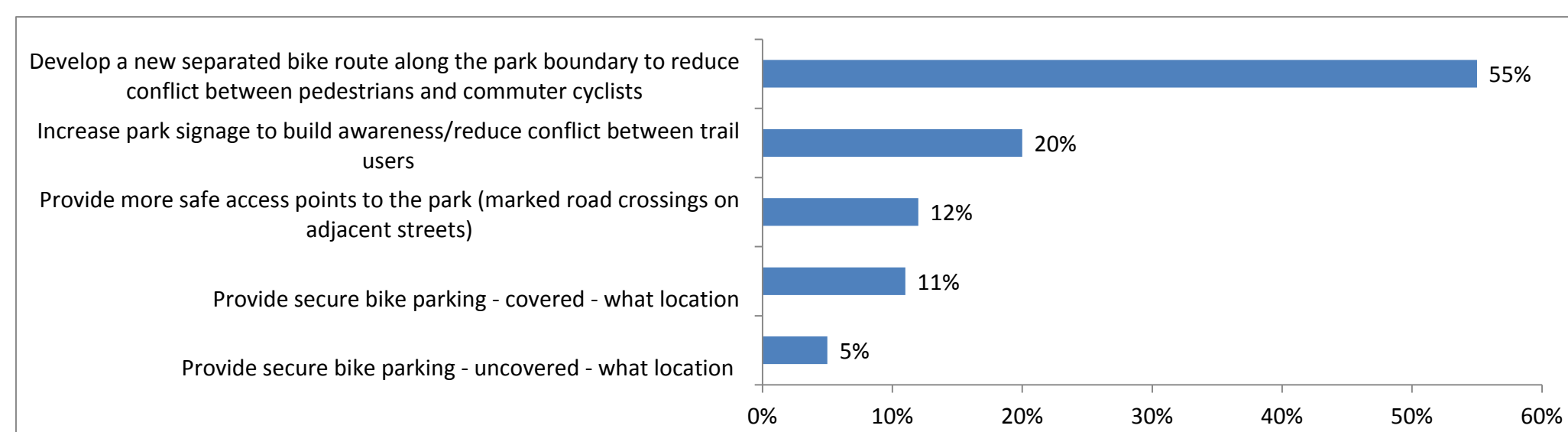
2 HIGHEST PRIORITIES FOR TRAILS:

- 1 Address drainage issues on the trails
- 2 Consider boardwalk development through sensitive ecosystems near Trout Lake

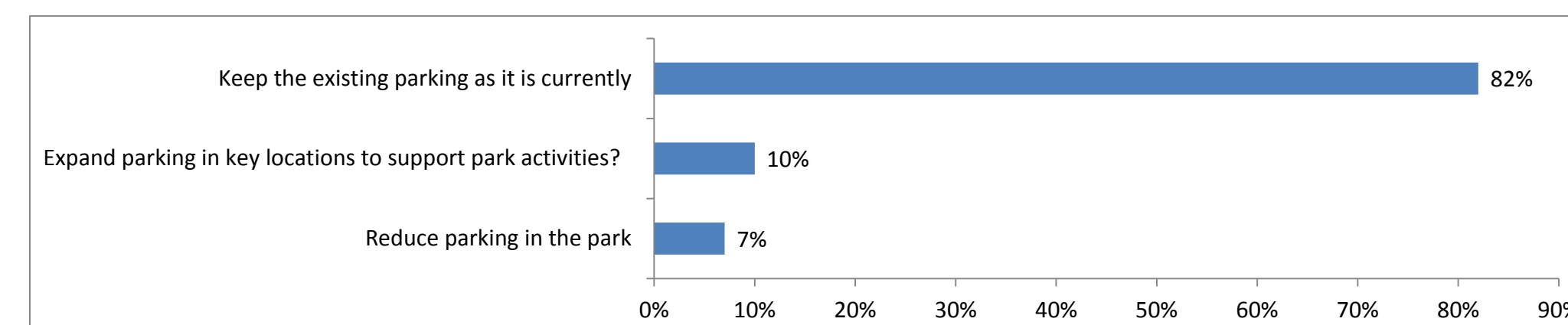


TOP 2 PRIORITIES FOR ACTIVE TRANSPORTATION

- 1 Develop a new separated bike route along the park boundary
- 2 Increase park signage to build awareness/reduce conflict between trail users



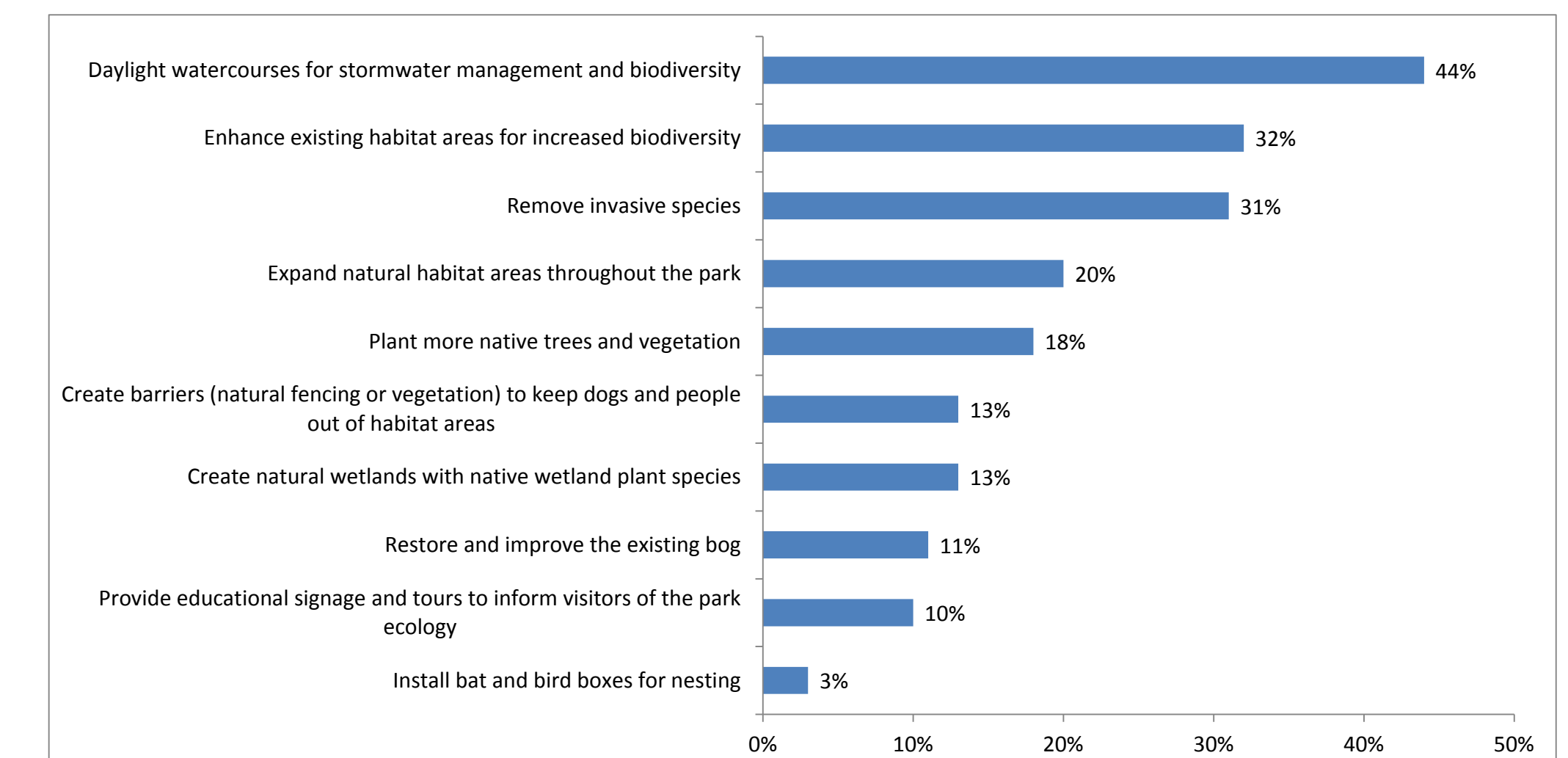
PARKING PRIORITY



TOPIC 2: NATURE & ENVIRONMENT

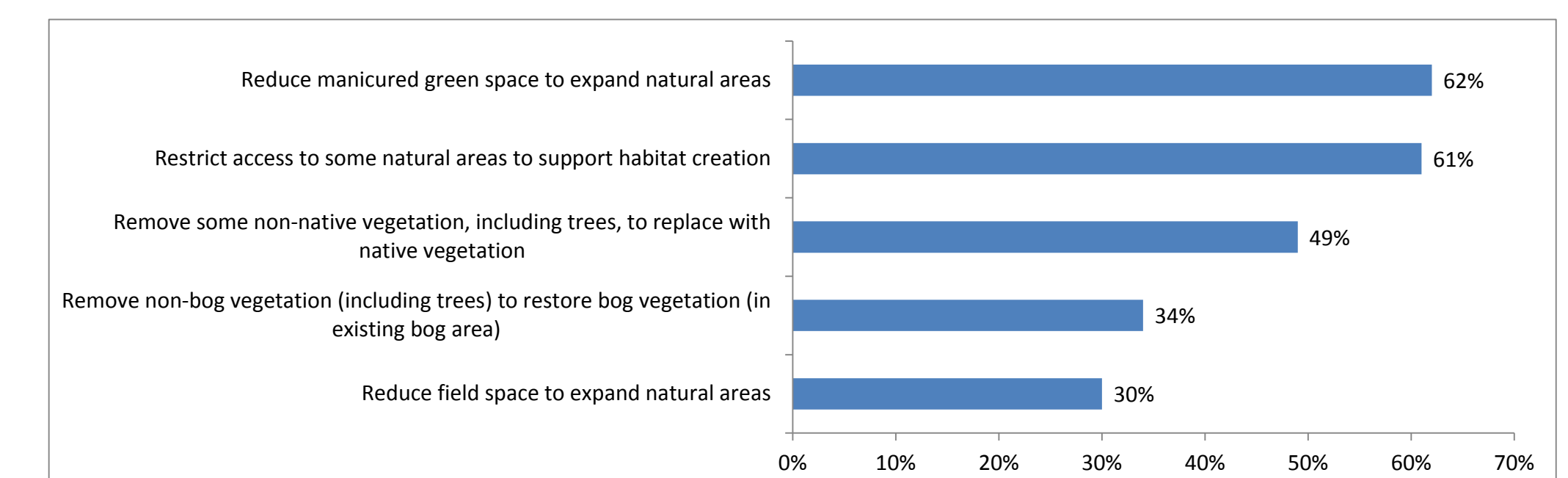
2 HIGHEST PRIORITIES FOR NATURE AND ENVIRONMENT:

- 1 Daylight watercourses
- 2 Enhance existing habitat areas for increased biodiversity



SUPPORTED TRADE-OFFS

62% of respondents supported reducing manicured green space to expand natural areas



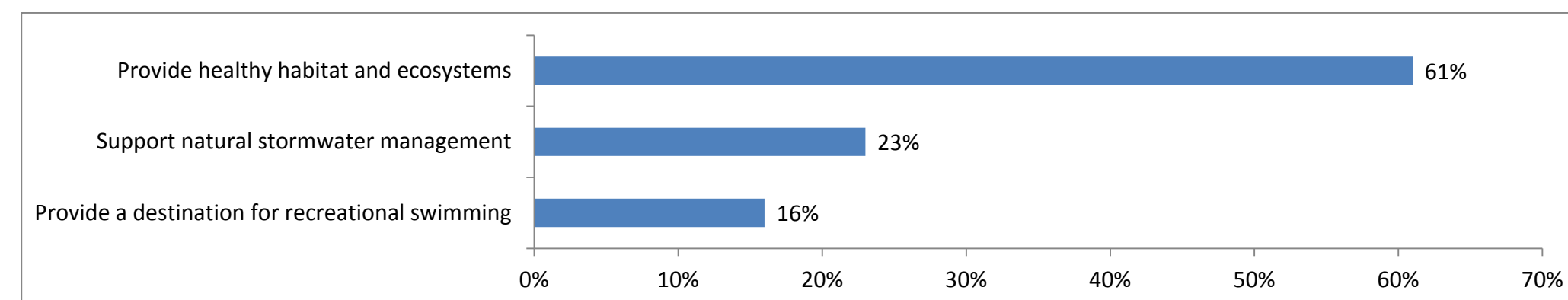
What We've Heard - Discussion Guide



TOPIC 3: WATER

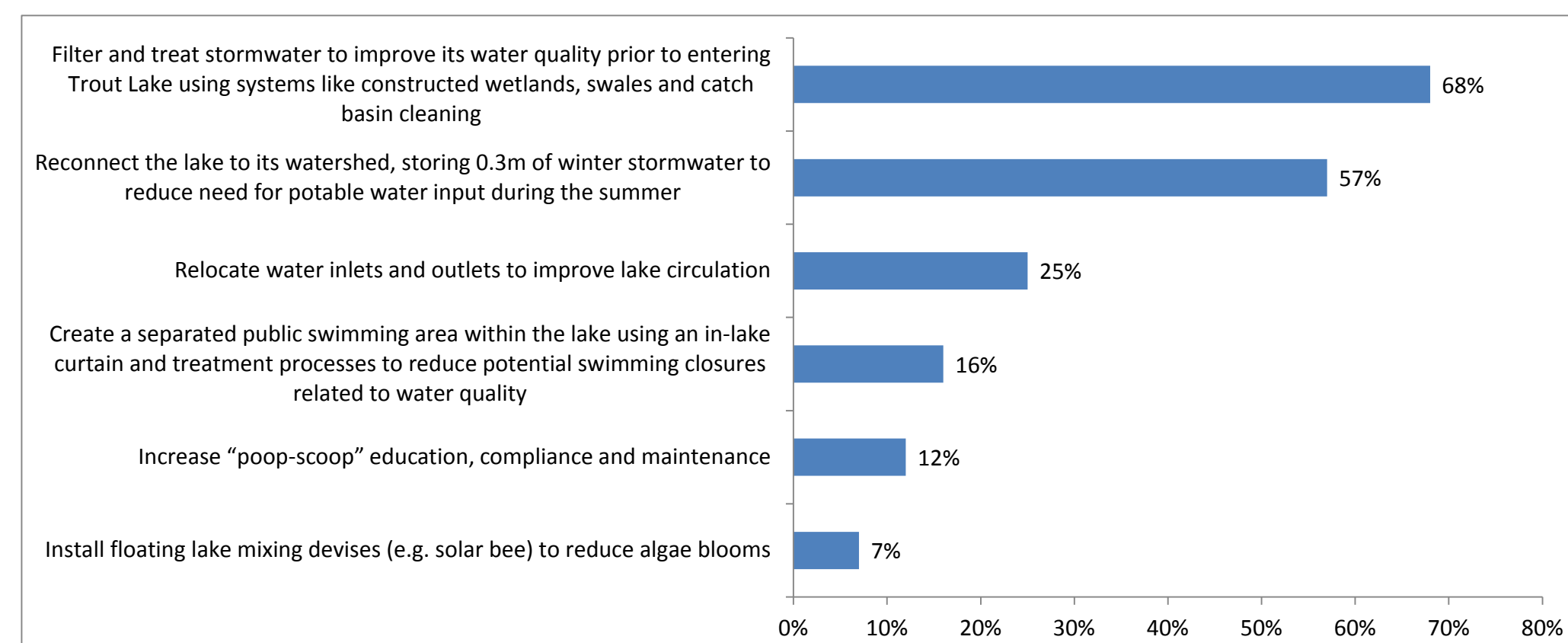
TROUT LAKE

61% of respondents felt that the priority for Trout Lake should be to provide healthy habitat and ecosystems



TOP 2 LAKE IMPROVEMENT PROJECTS:

- 1 Filter and treat stormwater to improve its water quality prior to entering Trout Lake
- 2 Reconnect the lake to its watershed



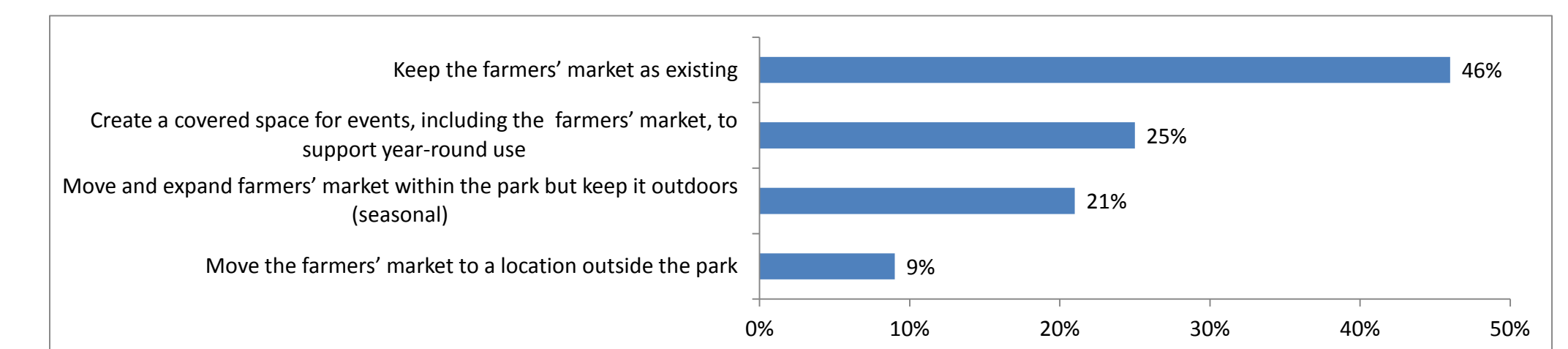
TOP 2 WATER PRIORITIES:

- 1 Reconnect Trout Lake to a clean watershed
- 2 Improve water quality

TOPIC 4: CULTURE & EVENTS

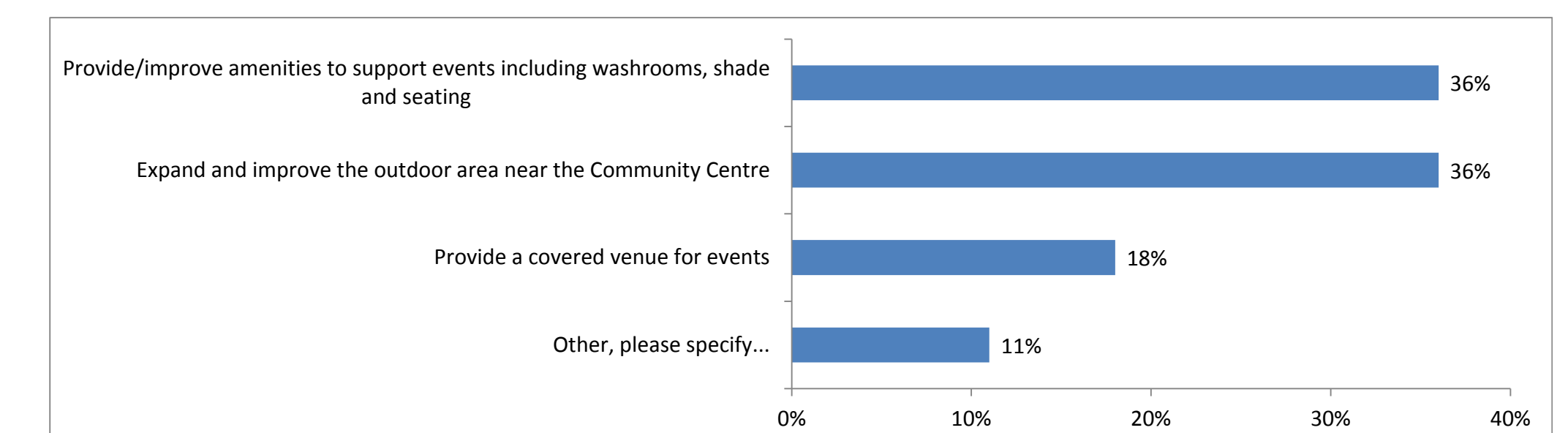
FARMERS' MARKET

46% of respondents think it is better to keep the farmers' market as existing



TOP 2 PRIORITIES FOR IMPROVING COMMUNITY EVENT SPACE:

- 1 Expand and improve the outdoor area near the Community Centre
- 2 Provide/improve amenities to support events



EVENTS

68% of respondents were in favour of encouraging more events to take place in the park

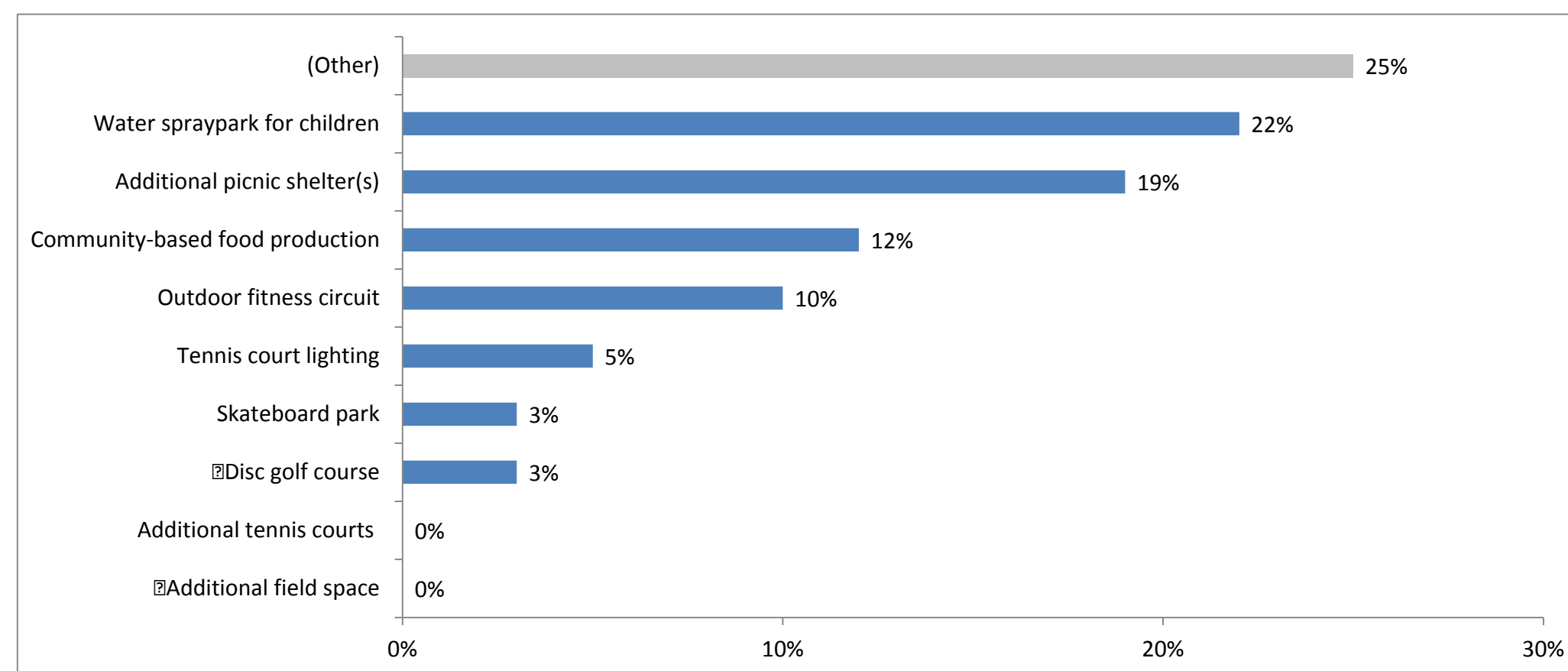
What We've Heard - Discussion Guide



TOPIC 5: ACTIVE SPACES

TOP 3 NEW ADDITIONS TO THE PARK:

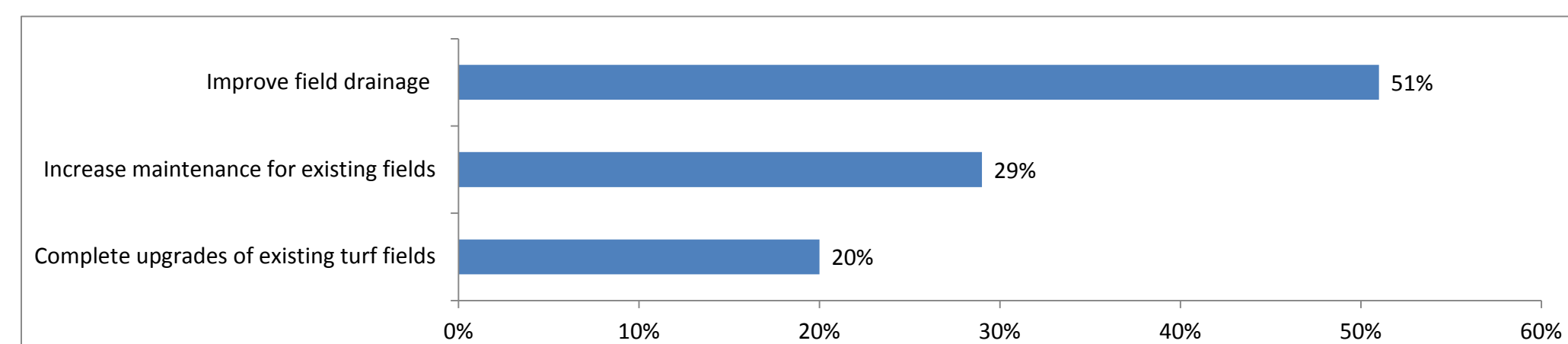
- 1 Other
- 2 Water spraypark for children
- 3 Additional picnic shelters



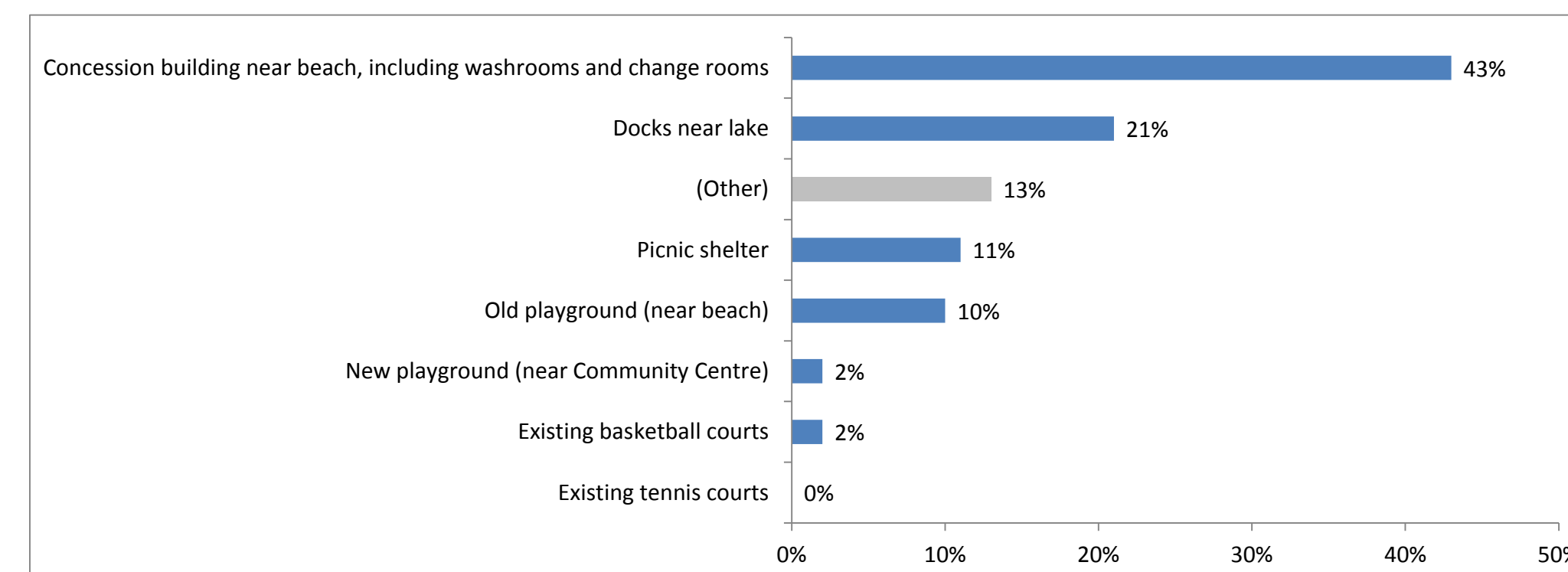
OTHER SUGGESTIONS:

- Workshops/programs (e.g. yoga, tai chi, nature walks)
- Dock upgrades
- No new park amenities

TOP PRIORITIES FOR IMPROVING FIELD SPACES:



TOP PRIORITIES FOR UPGRADING EXISTING AMENITIES IN THE PARK:



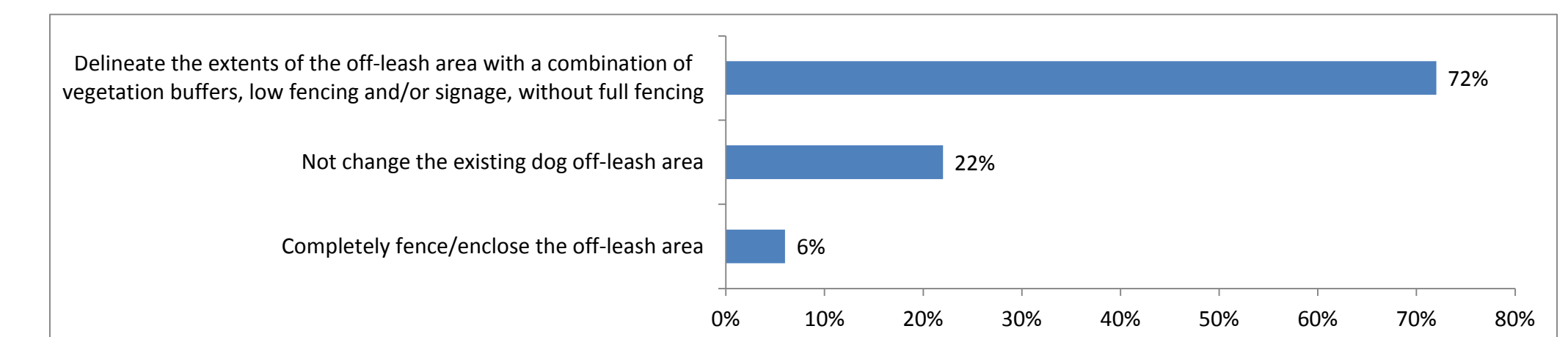
TOP 3 ACTIVE SPACE PRIORITIES

- 1 Boardwalk
- 2 Improved Washrooms
- 3 Water spraypark for children

TOPIC 6: DOGS

POTENTIAL DIRECTIONS FOR THE DOG OFF-LEASH AREA:

72% of respondents thought it was better to delineate the extents of the off-leash area with a combination of vegetation buffers, low fencing and/or signage, without full fencing



OTHER IMPROVEMENTS FOR MANAGING INTERACTIONS BETWEEN DOGS AND HUMANS (IN ORDER OF PREFERENCE):

- Provide better signage to clearly identify on- and off-leash areas
- Move the lakeside pathway so it does not cross through off-leash area
- Increase enforcement of dog on-leash regulations in other park areas