

Welcome

Thank you for coming to the Pandora Park and Sports Court Upgrade Open House

Please review the display boards and share your comments and ideas. We will use your input to develop a preferred concept for the park and sports court upgrades.

Background

Over the past several years the Park Board has been engaging with the community and prioritizing needed upgrades to Pandora Park.

During previous engagement events we heard support for:

- Adding a path to connect the east and west sides of the park
- Removing one or more tennis courts
- Replacing the basketball court
- Adding more social and open green spaces
- Designating a dog off-leash area

What's Happening Now?

We've prepared 3 preliminary concept plans and would like to know what you think!

The concepts respond to what we have heard at previous engagement events and focus on sports court upgrades and improvements to the west side of the park.

All 3 concepts ensure the retention of existing trees and propose the removal of 2 of the 4 existing tennis courts to:

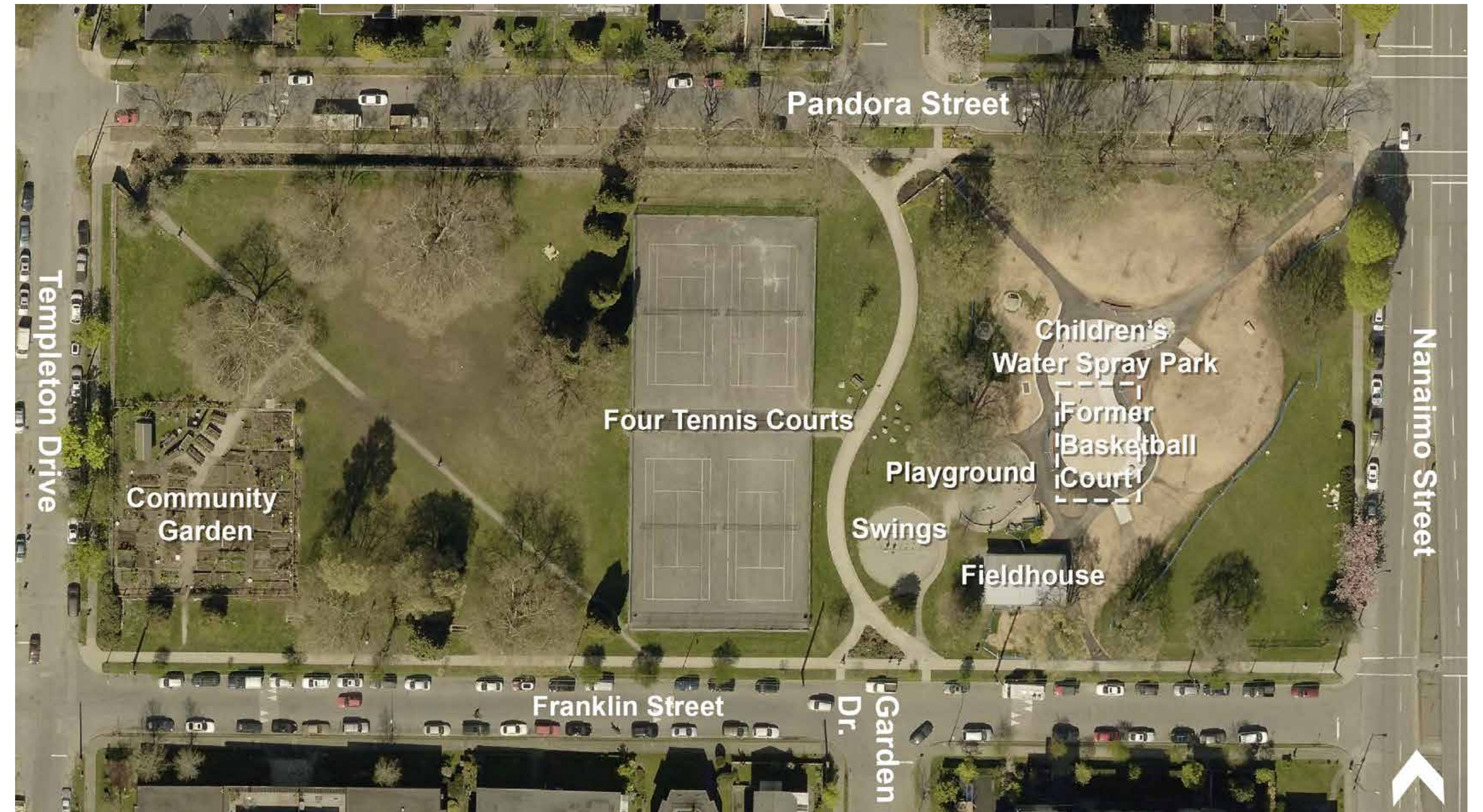
- Increase green space
- Improve pedestrian circulation in the park
- Replace the basketball court

The key difference between the 3 concepts is the LOCATION of the:

- resurfaced tennis courts
- basketball / multi-use sports court
- off-leash dog area (noted on concepts 1 and 2 only)

Questions?

Please speak to staff from the Vancouver Park Board here today! Let us know which concept you feel would work best in your neighbourhood park by completing the questionnaire now or online before October 9th at vancouver.ca/pandora-park.



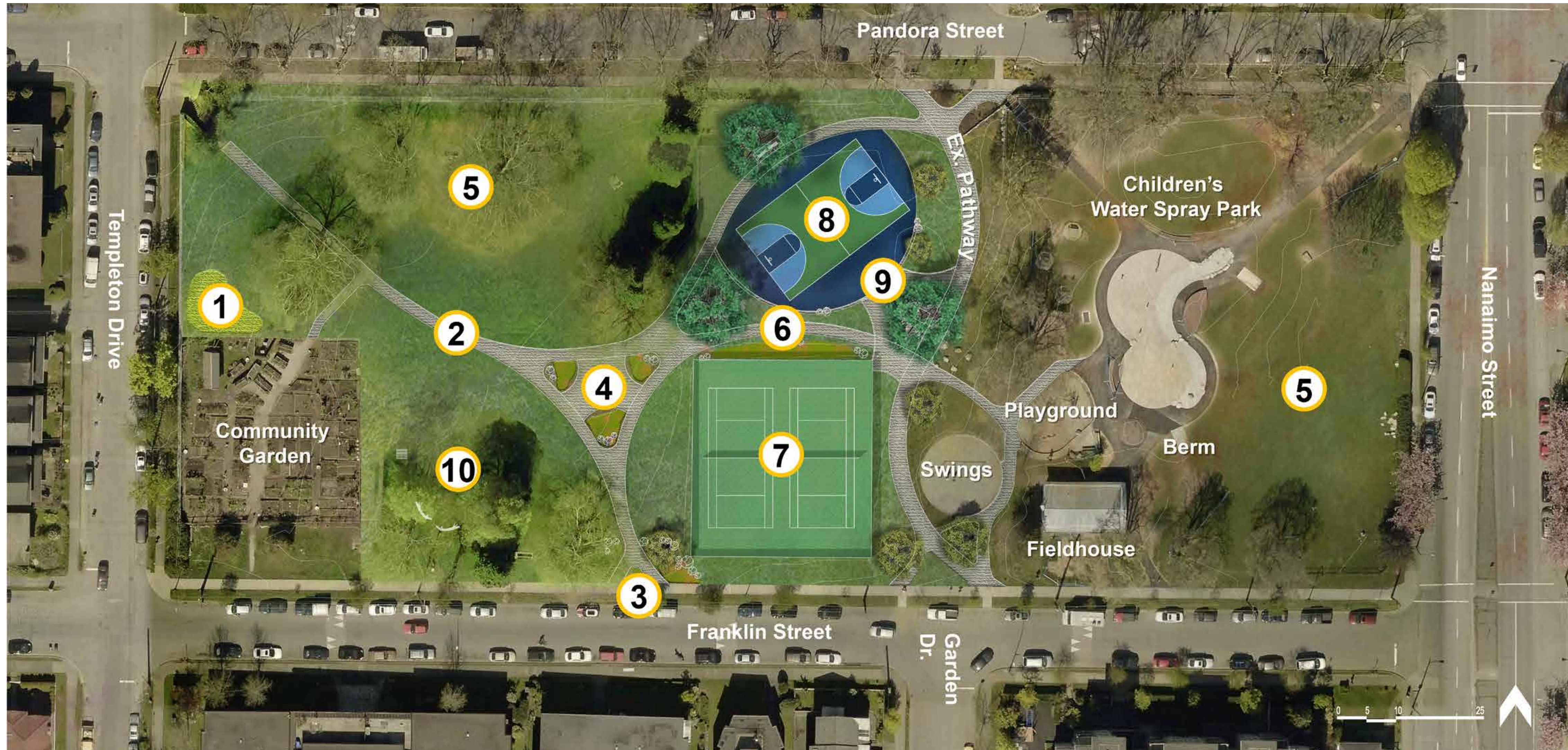
Pandora Park Current Features



Recent Park Improvements

Concept 1

Replaces the basketball/multi-use sports court north of the resurfaced tennis courts and proposes an off-leash dog area next to the community garden



FEATURES:

- 1 Proposed community garden expansion
- 2 Path upgrade to Franklin Street
- 3 New park entrance at Franklin Street
- 4 Seating/picnic area
- 5 Open green space
- 6 New path to playground
- 7 Two resurfaced tennis courts
- 8 Basketball/multi-use sports court
- 9 Seat wall
- 10 Off-leash dog area



View of path between sports court and tennis courts

Examples



10 Off-leash dog area



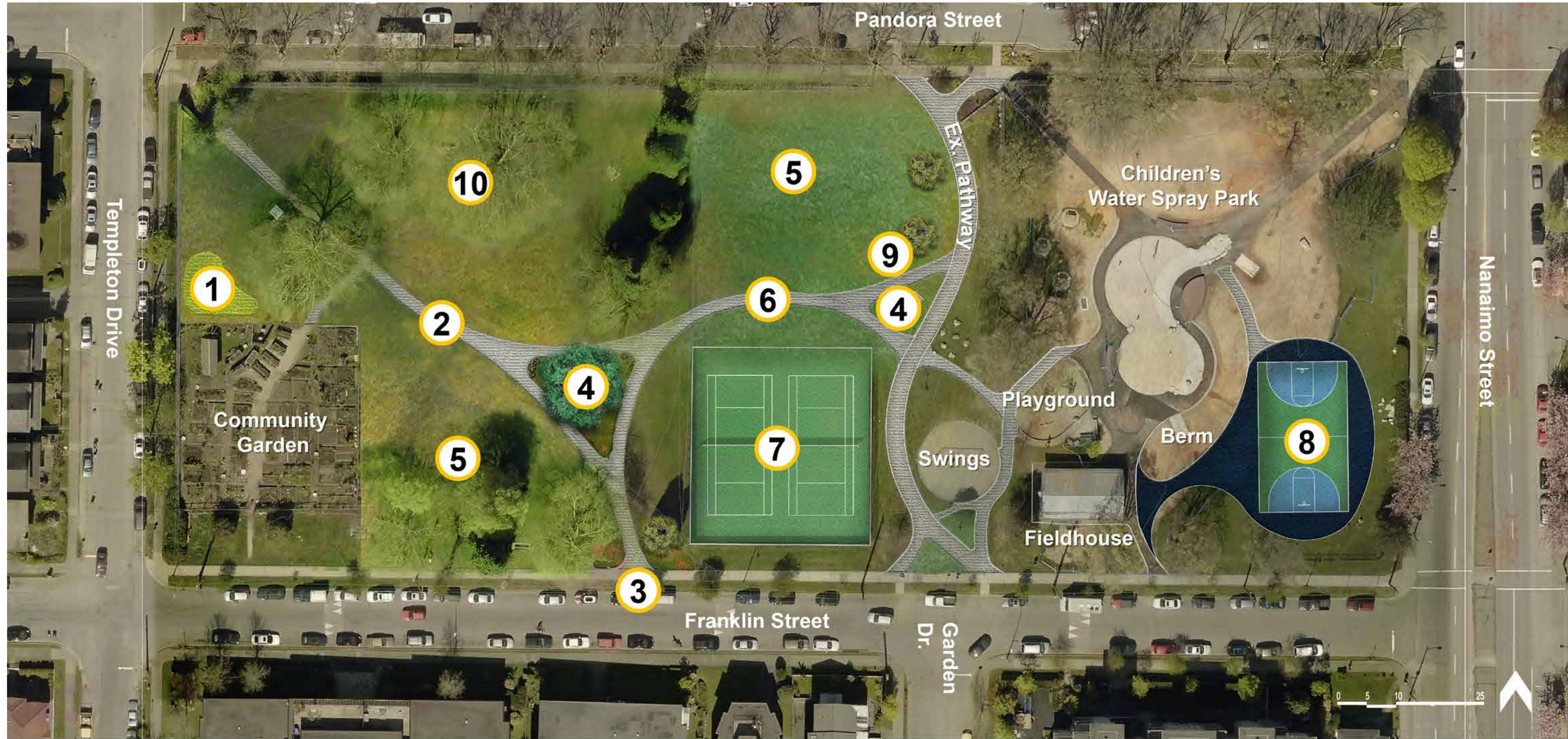
9 Seat Wall



8 Sports Court

Concept 2

Replaces the basketball/multi-use sports court close to its former location on the east side of the park and proposes an off-leash dog area on the north west side of the park



FEATURES:

- ① Proposed community garden expansion
- ② Path upgrade to Franklin Street
- ③ New park entrance at Franklin Street
- ④ Seating/picnic area
- ⑤ Open green space
- ⑥ New path to playground
- ⑦ Two resurfaced tennis courts
- ⑧ Basketball/multi-use sports court
- ⑨ Seat wall
- ⑩ Off-leash dog area



View of new path from playground

Examples



⑩ Off-leash dog area



⑧ Sports Court



⑤ Open Space



④ Benches

Concept 3

Replaces the basketball/multi-use sports court south of resurfaced tennis court, creating more open green space near Franklin Street



FEATURES:

- 1 Proposed community garden expansion
- 2 Path upgrade to Franklin Street
- 3 New park entrance at Franklin Street
- 4 Seating/picnic area
- 5 Open green space
- 6 New path to playground
- 7 Two resurfaced tennis courts
- 8 Basketball/multi-use sports court



View looking east of improved path to Franklin Street and children's playground

Examples



8 Sports Court



4 Picnic Tables



5 Open Space