

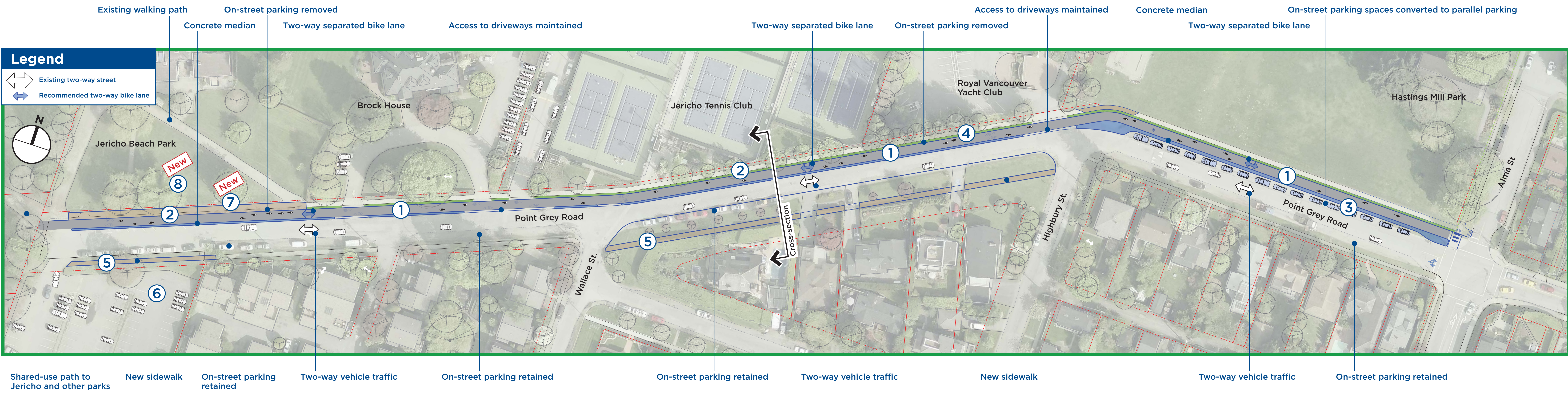
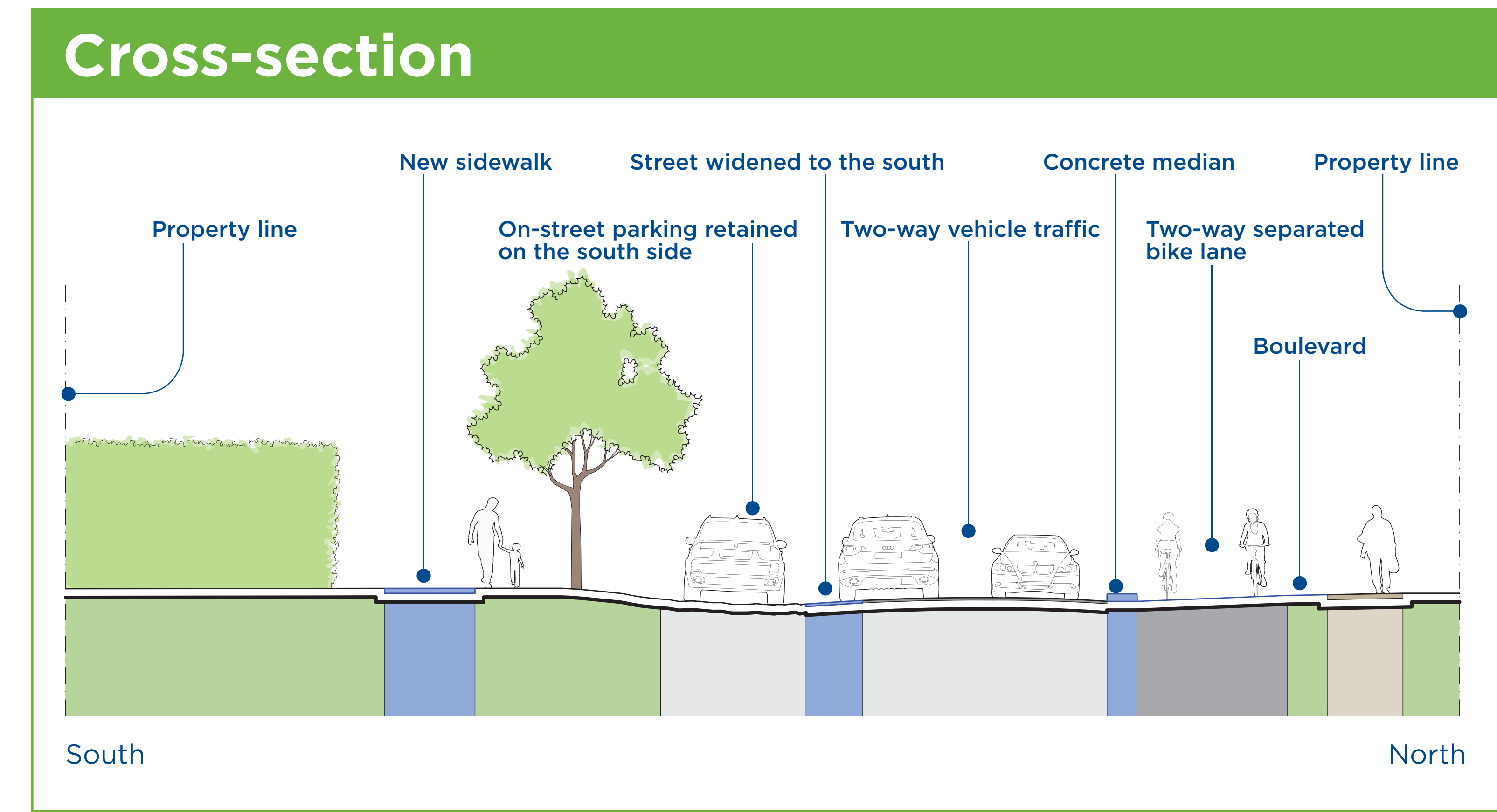
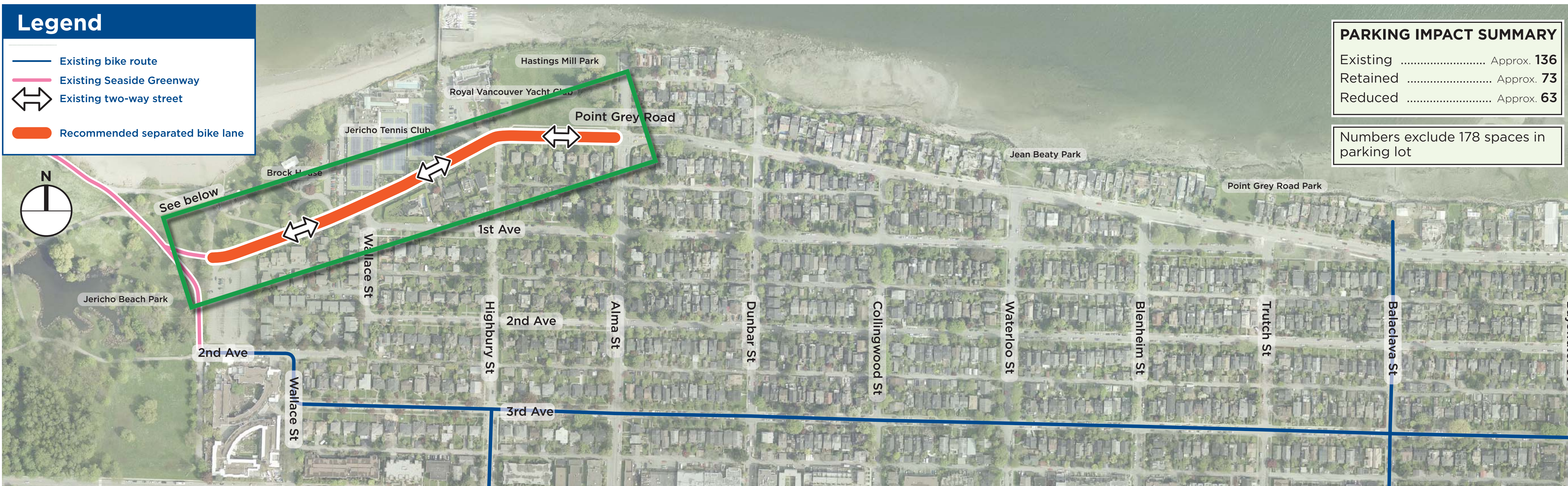
1

Point Grey Road - West of Alma

New sidewalks and separated two-way bike lanes



POINT GREY - CORNWALL CORRIDOR



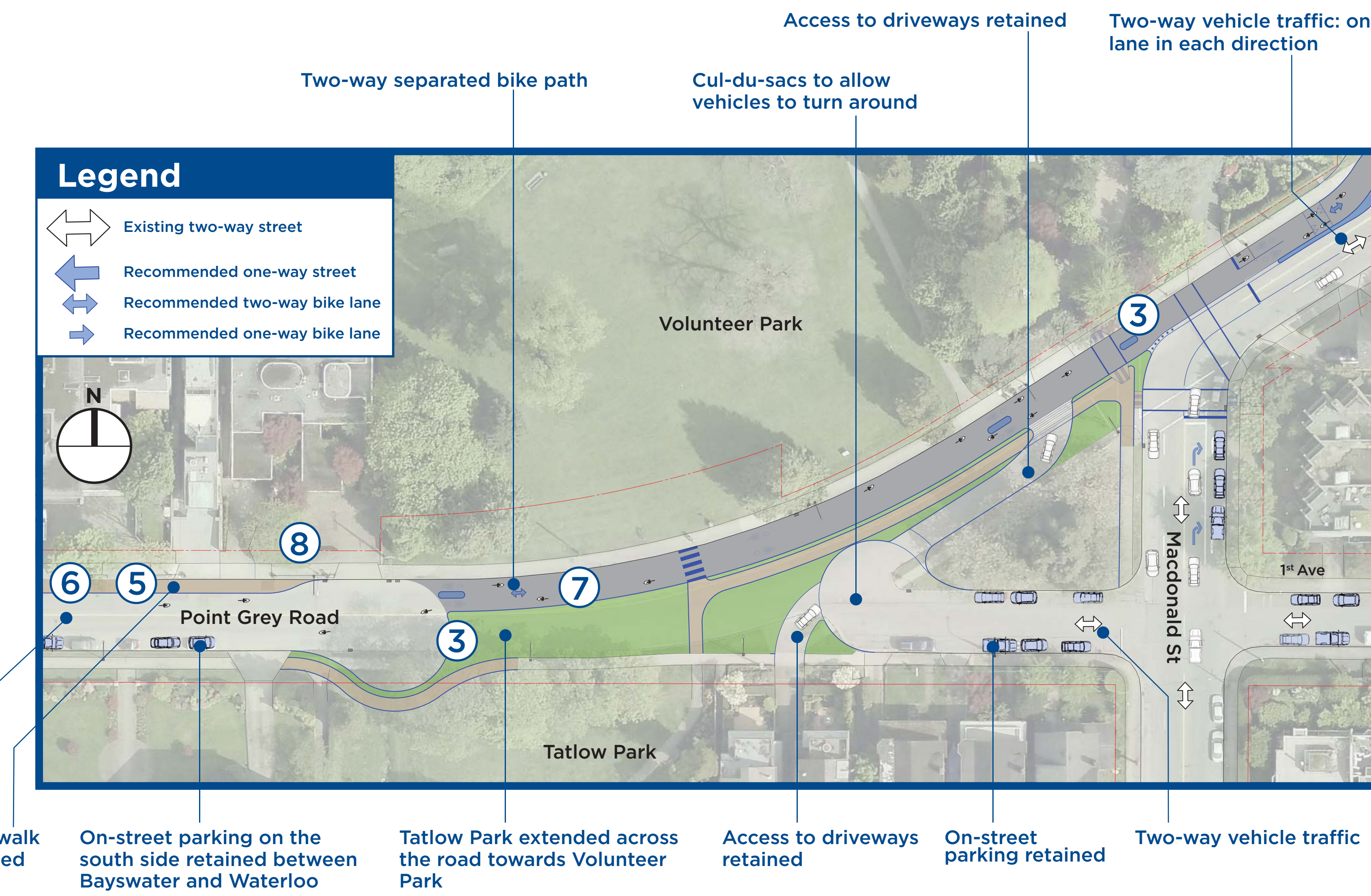
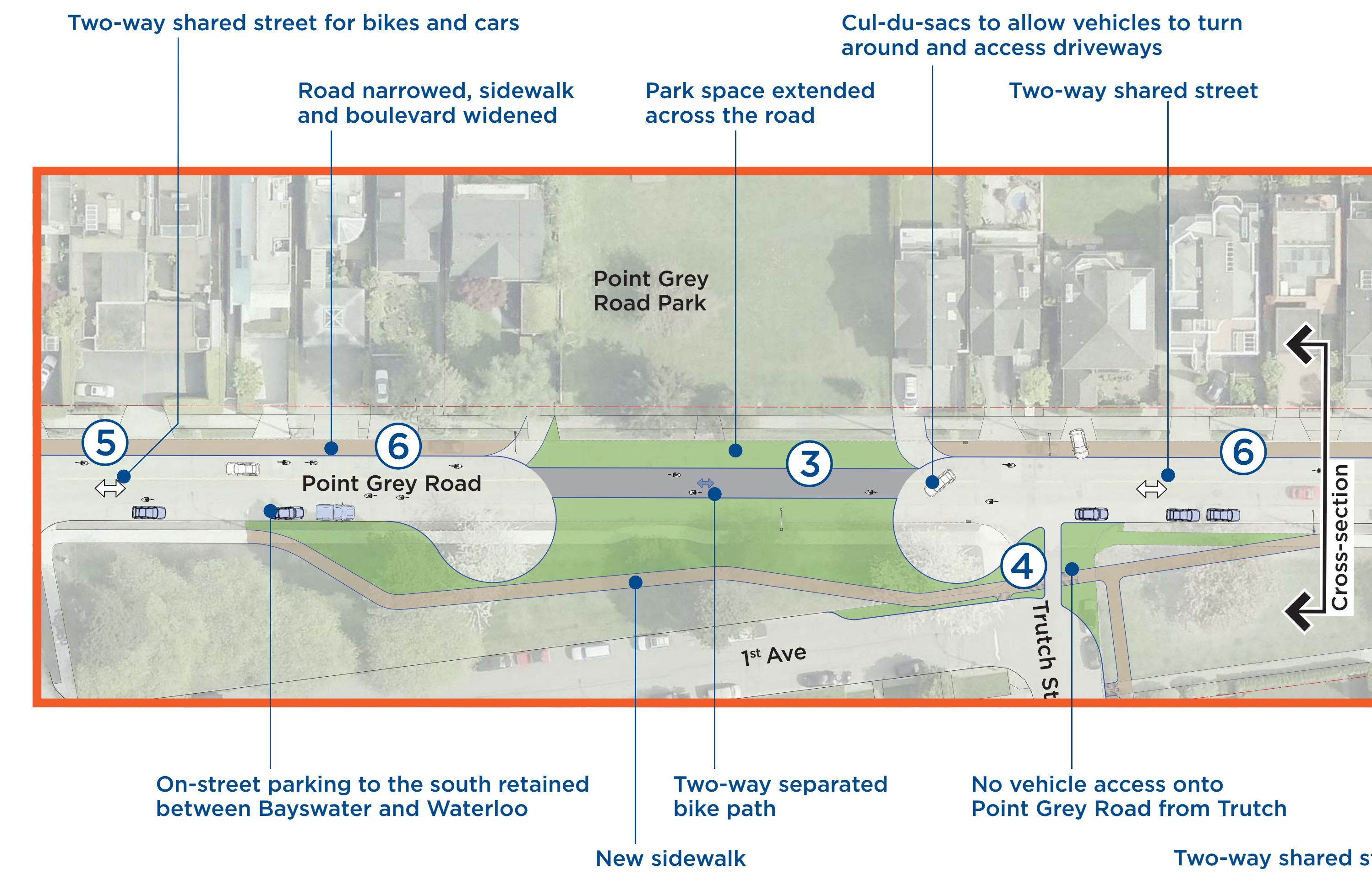
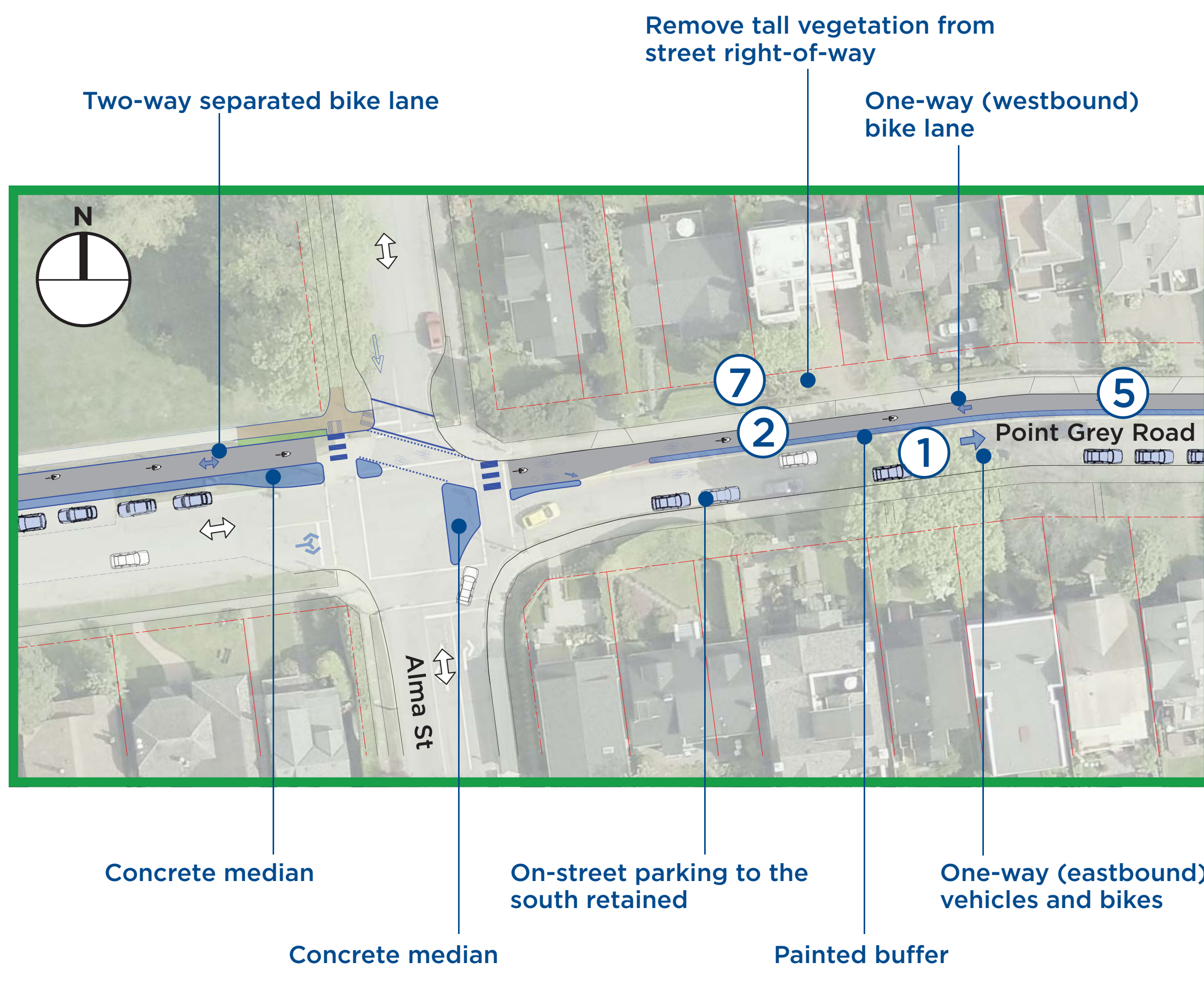
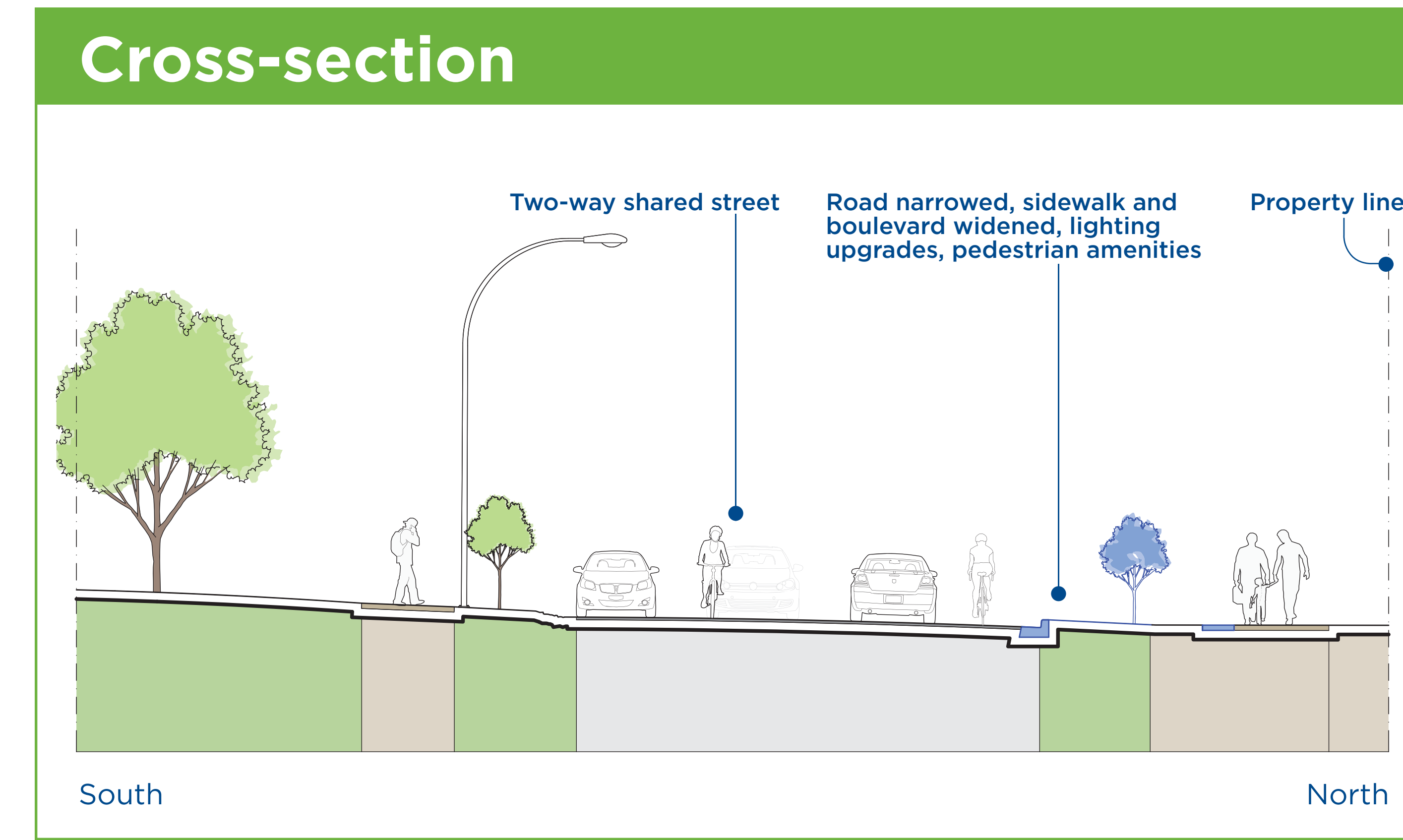
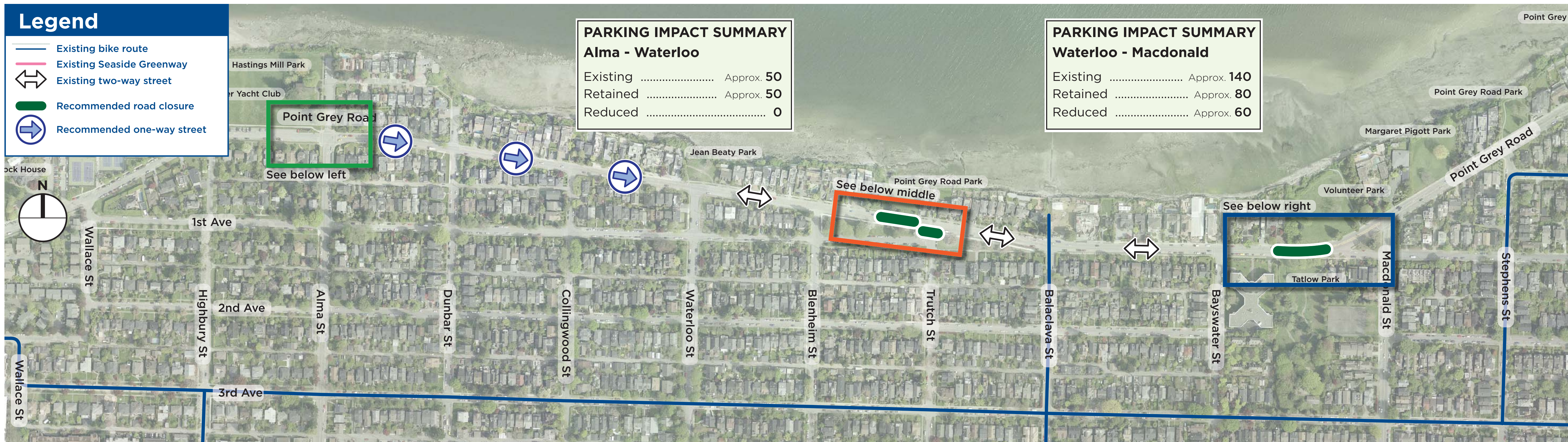
Key Features
<ul style="list-style-type: none"> New sidewalks on the south side Two-way separated bike lane Boulevard/sidewalk widening on the north side

What are we recommending?	Why?
1 Two-way separated bike lane on the north side of the street	<ul style="list-style-type: none"> To provide a safe, convenient and comfortable cycling route for people of all ages and abilities To provide a buffer between pedestrians and vehicles
2 On-street parking removed from the north side of the road between Jericho Beach Park and Highbury	<ul style="list-style-type: none"> To maintain two-way traffic and accommodate a two-way separated bike lane
3 Perpendicular parking on the north side of the road between Highbury and Alma changed to parallel parking	<ul style="list-style-type: none"> To maintain two-way traffic and accommodate a two-way separated bike lane
4 Boulevard widened on north side	<ul style="list-style-type: none"> To improve accessibility and comfort for pedestrians

What are we recommending?	Why?
5 New sidewalk constructed on the south side between Wallace and Highbury	<ul style="list-style-type: none"> To improve accessibility and comfort for pedestrians
New 6 Provision of new off-street parking for members of Brock House Society seniors' centre	<ul style="list-style-type: none"> To maintain accessibility to Brock House for members of the Society
New 7 Wider sidewalk between Brock House and Jericho Beach Park	<ul style="list-style-type: none"> To improve accessibility and comfort for pedestrians
New 8 Possible bike path in Jericho Beach Park (subject to Parks Approval)	<ul style="list-style-type: none"> To retain some on-street parking west of Wallace

Point Grey Road - Alma to Macdonald

Wider sidewalks and a local street bikeway with road closures



Key Features
<ul style="list-style-type: none"> Wider sidewalks and/or boulevard on north side adjacent to hundreds of vehicles per day Street closed to through vehicle traffic at Macdonald and Trutch One-way street between Alma and Waterloo Low volume street shared by bikes and cars Expanded green space at Volunteer, Tatlow and Point Grey Road Parks, daylighting of Tatlow Creek, and enhanced access to the beach with accompanying biodiversity improvements

What are we recommending? Why?	
<p>1 One-way (eastbound) street for cars between Alma and Waterloo, shared with eastbound bikes</p> <p>2 Westbound bike lane between Alma and Waterloo</p> <p>3 Road closures at Point Grey Road Park and Tatlow Park</p> <p>4 No vehicular access onto Point Grey Road from Trutch</p>	<ul style="list-style-type: none"> To reduce the vehicle volumes and speed on Point Grey Road while maintaining access for residents and emergency and service vehicles To provide a safe, convenient and comfortable cycling route for people of all ages and abilities To improve safety for all road users by reducing vehicle volumes and speed while maintaining access for residents and emergency and service vehicles To provide an on street cycling route for people of all ages and abilities Expanded green space at Volunteer, Tatlow and Point Grey Road Parks, daylighting of Tatlow Creek, and enhanced access to the beach with accompanying biodiversity improvements To improve safety for all road users by reducing conflict between vehicles, bikes and pedestrians

What are we recommending? Why?	
<p>5 On-street parking removed from north side between Waterloo and Macdonald</p> <p>6 Sidewalk and boulevard widened on north side between Waterloo and Macdonald, lighting upgrades and pedestrian amenities</p> <p>7 Two-way separated bike lane between Volunteer Park and Tatlow Park</p> <p>8 Remove tall vegetation from street right-of-way on the north side</p>	<ul style="list-style-type: none"> To provide space for sidewalk/boulevard widening To maintain emergency and service vehicle access To improve accessibility and comfort for pedestrians To provide a safe, convenient and comfortable cycling route for people of all ages and abilities To improve visibility and safety for park users To improve visibility and safety for all road users

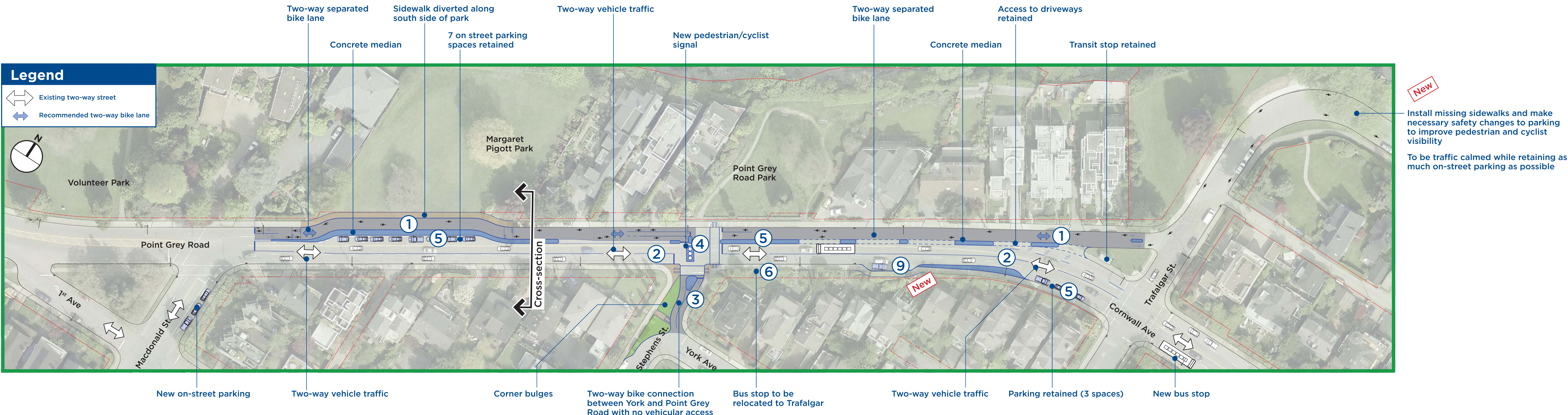
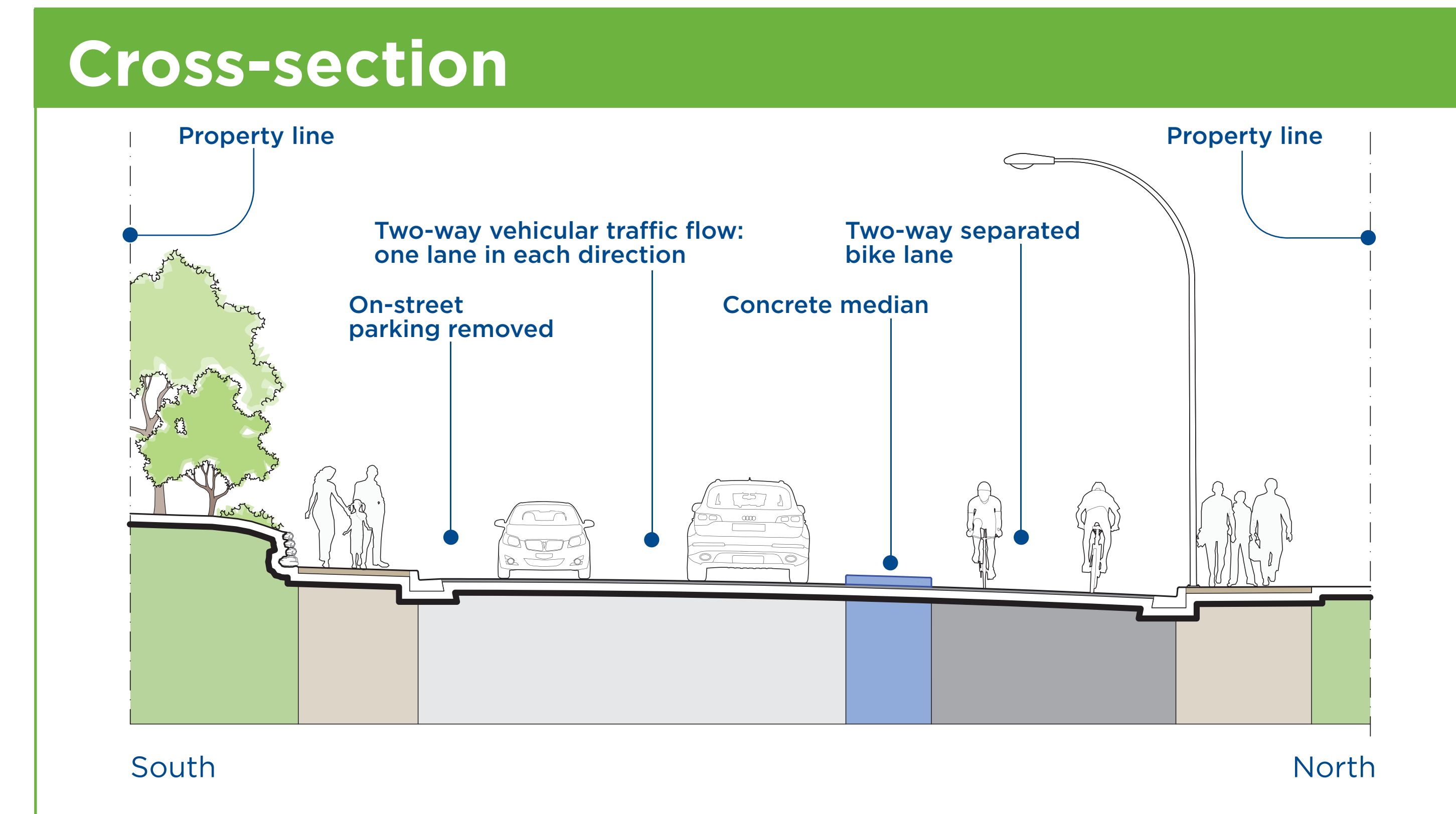
3

Point Grey Road - Macdonald to Trafalgar

Wider sidewalks and separated two-way bike lanes



POINT GREY - CORNWALL CORRIDOR



Key Features
• Two-way separated bike lanes on north side between Macdonald and Trafalgar
• Parking changes
• Two-way, two-lane vehicle traffic between Macdonald and Trafalgar
• One-way, one-lane vehicle traffic between Trafalgar and Balsam
• New pedestrian/cyclist signal at Stephens
• Stephens, north of York closed to vehicles

What are we recommending?	Why?
① Two-way separated bike lane on the north side of the street between Macdonald and Trafalgar	• To provide a safe, convenient and comfortable cycling route for people of all ages and abilities
② Reduction in number of vehicle lanes from four to two	• To provide space for separated bike lanes and some full-time parking • To reduce the vehicle volumes and speeds on Cornwall
③ No vehicle access along Stephens between York and Point Grey Road	• To improve safety for all road users by reducing conflict between vehicles, bikes and pedestrians • To provide a safer cycling connection between York and Point Grey Road
④ New pedestrian and cyclist crossing signal at Stephens	• To provide a safe and accessible crossing for pedestrians and cyclists of all ages and abilities

What are we recommending?	Why?
⑤ Changes to parking on both sides of street between Macdonald and Trafalgar (See parking changes above)	• To provide space for two-way traffic and two-way separated bike lane • To maintain emergency vehicle access • To accommodate some existing parking demand
⑥ Bus stop east of Stephens relocated to Trafalgar	• To maintain transit service vehicle traffic flow on Point Grey Road
⑦ Separated bike lane on Point Grey Road between Trafalgar and Balsam	• To provide a safe, convenient and comfortable cycling route for people of all ages and abilities
⑧ On-street parking removed from the north side between Trafalgar and Balsam	• To provide space for the separated bike lane • To maintain emergency and sanitation vehicle access
New ⑨ Mid-block parking bay on the south side of street	• To accommodate a mid-block property without driveway or lane access