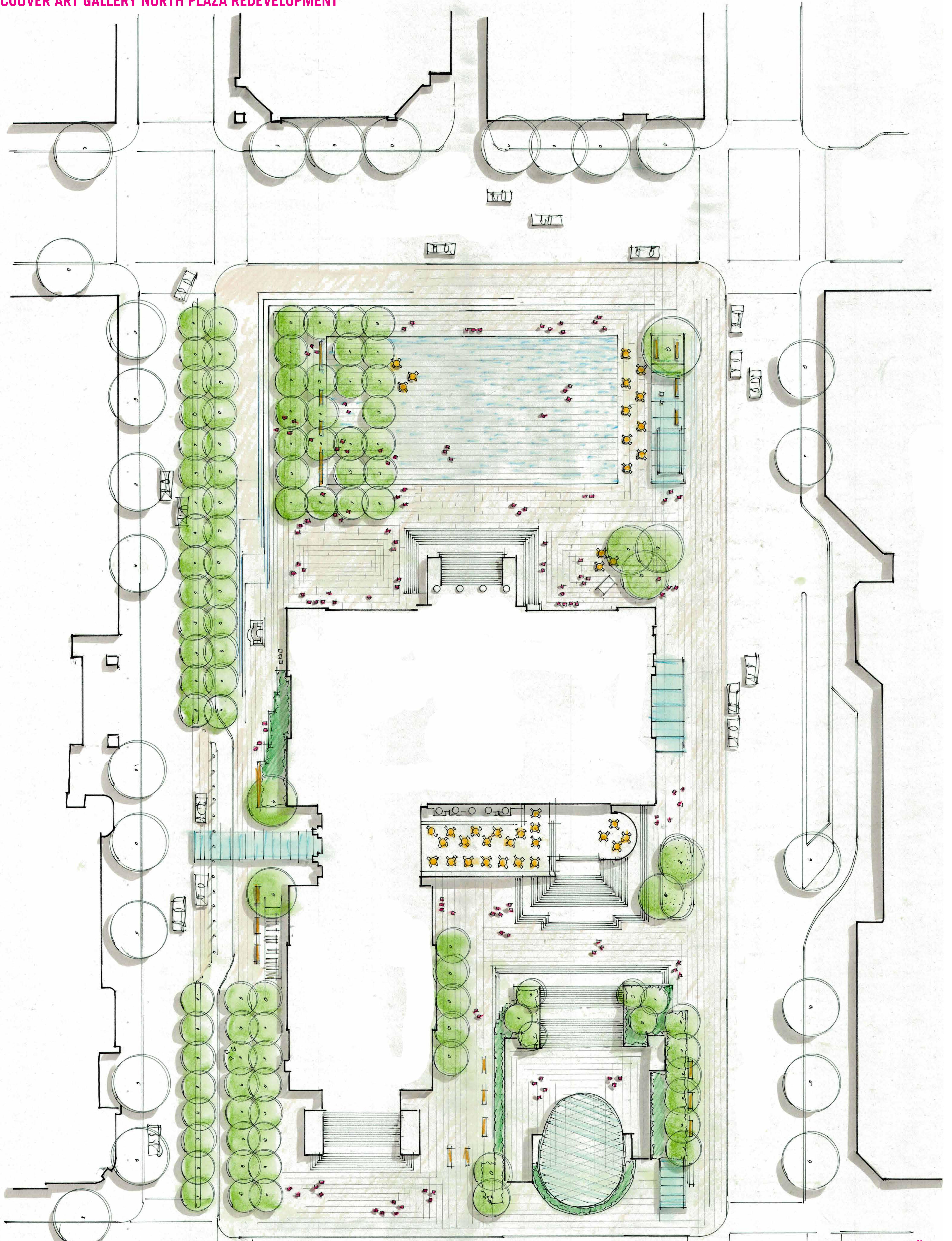


CONCEPT DESIGN - OPTION 1 - WET

VANCOUVER ART GALLERY NORTH PLAZA REDEVELOPMENT



PLAN

1:200

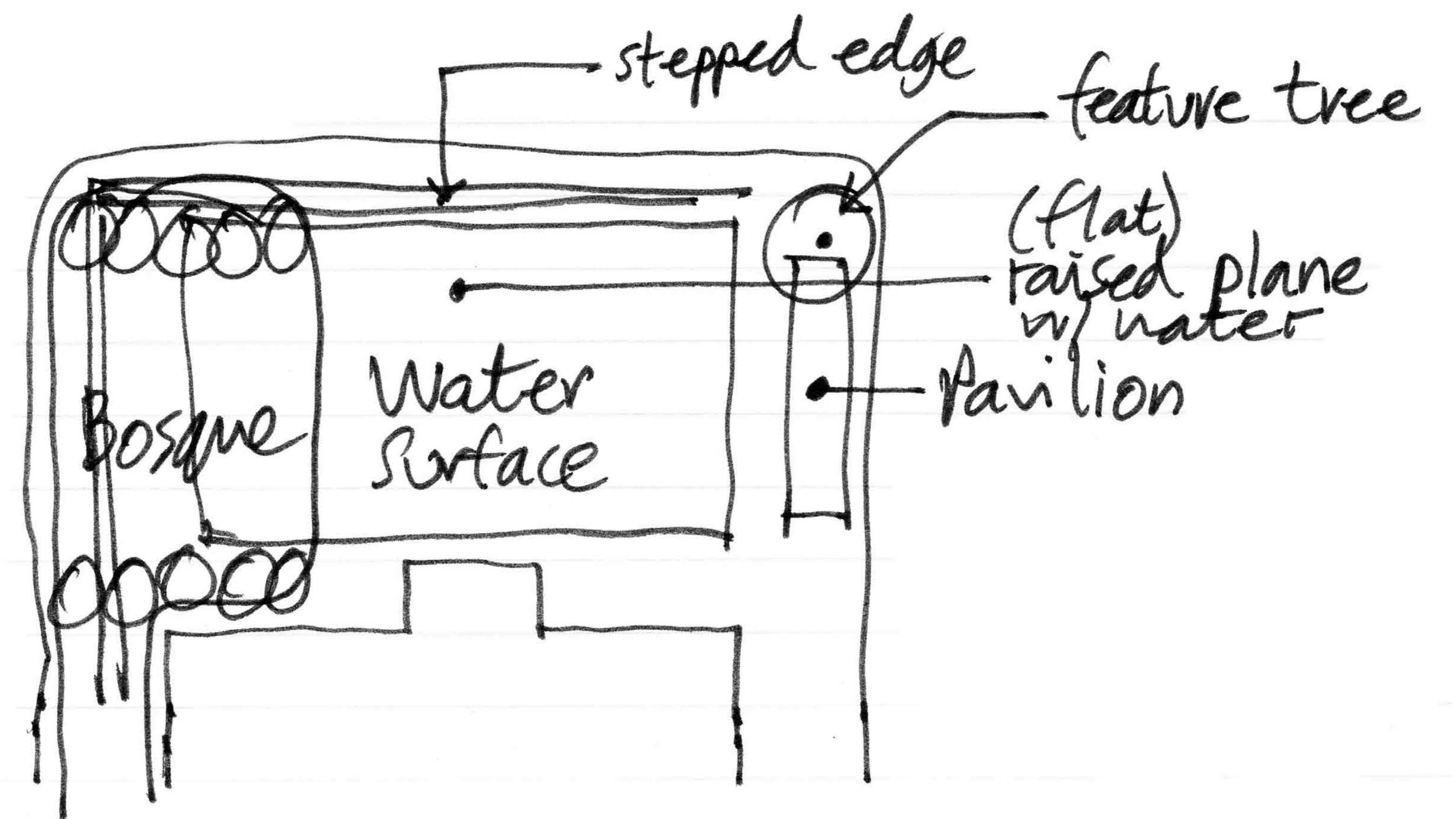


CONCEPT DESIGN - OPTION 1 - WET

VANCOUVER ART GALLERY NORTH PLAZA REDEVELOPMENT

THE BIG MOVES

- Bosque of trees encroaching into the square from Hornby Street side
- Raised flat ground plane
- Stepped edges along Hornby and Georgia
- Variable surface water treatment
- Pavilion along Howe Street
- Feature specimen tree at northeast corner



PRECEDENT IMAGES

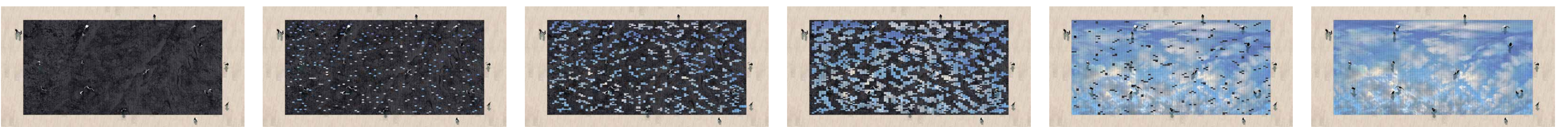


The large scale water feature shown in WET is conceptualized as a dynamic landscape which would act in several ways. Materially, it is a large rectangle of special paving stones which would rest on hidden pedestals within a shallow void under the plaza. The paving stones would be carefully designed to have very slight variations in level – enough to create different patterns of water accumulation, while still maintaining a comfortable surface to walk on. Under the

pavers, the void would naturally collect rainwater and act as a storm water collection field. As the water filled the void, the level of water would very gradually reach the level of pavers and then start to flood the stone landscape. As the water rose, the shallow mirror of water would spread across the plaza. Though the design described thus far could be completely passive, the plaza would need to have some control over how much it is flooded at certain times because of

events, etc. Because of this the water would need to have the ability to be drained whenever necessary, as well as potentially filled with another water source. To add another level of play and excitement to the feature – the design team imagines the inclusion of scattered misting spouts and small water jets within the paving field, as well as special lighting.

MATERIAL STUDIES



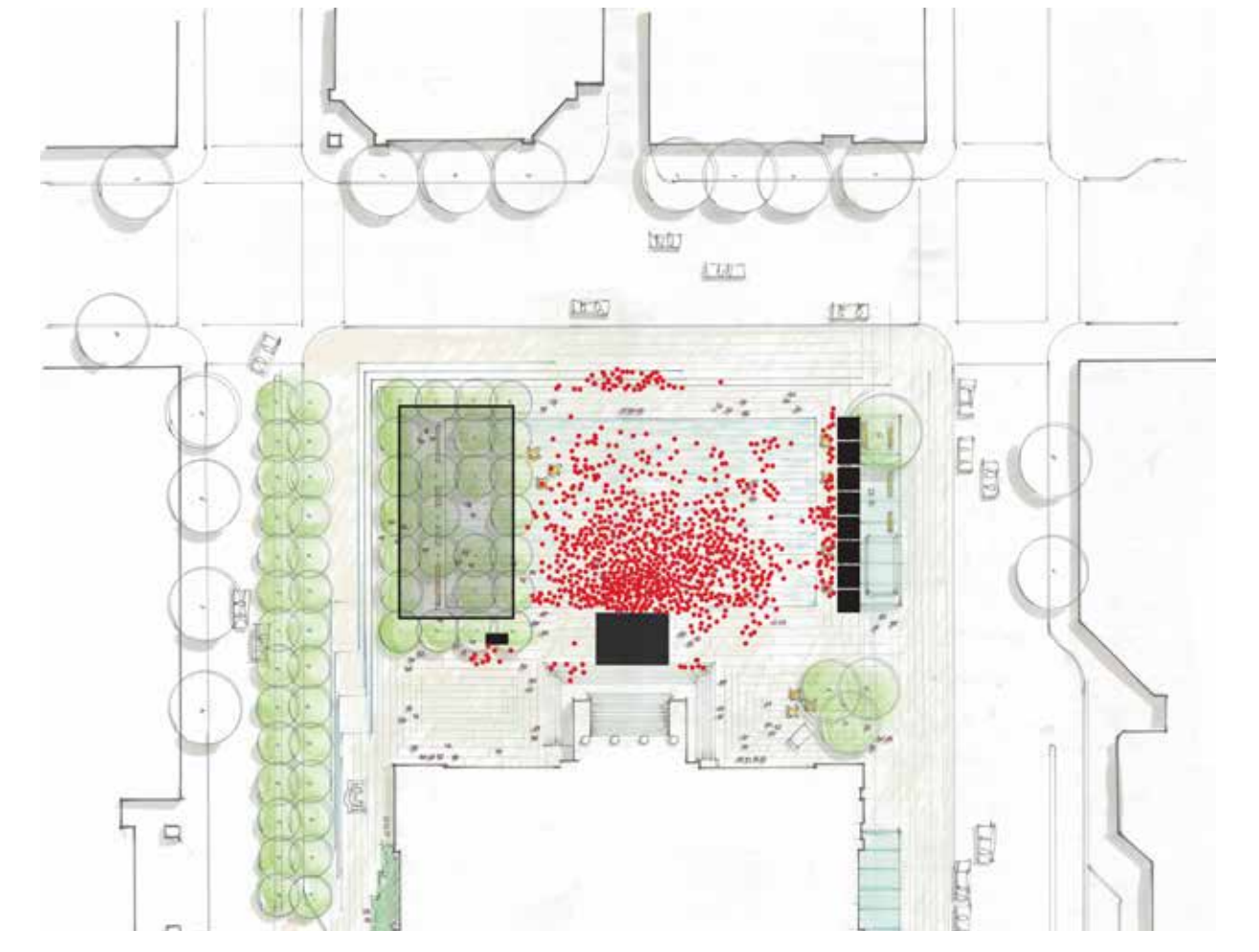
CONCEPT DESIGN - OPTION 1 - WET

VANCOUVER ART GALLERY NORTH PLAZA REDEVELOPMENT

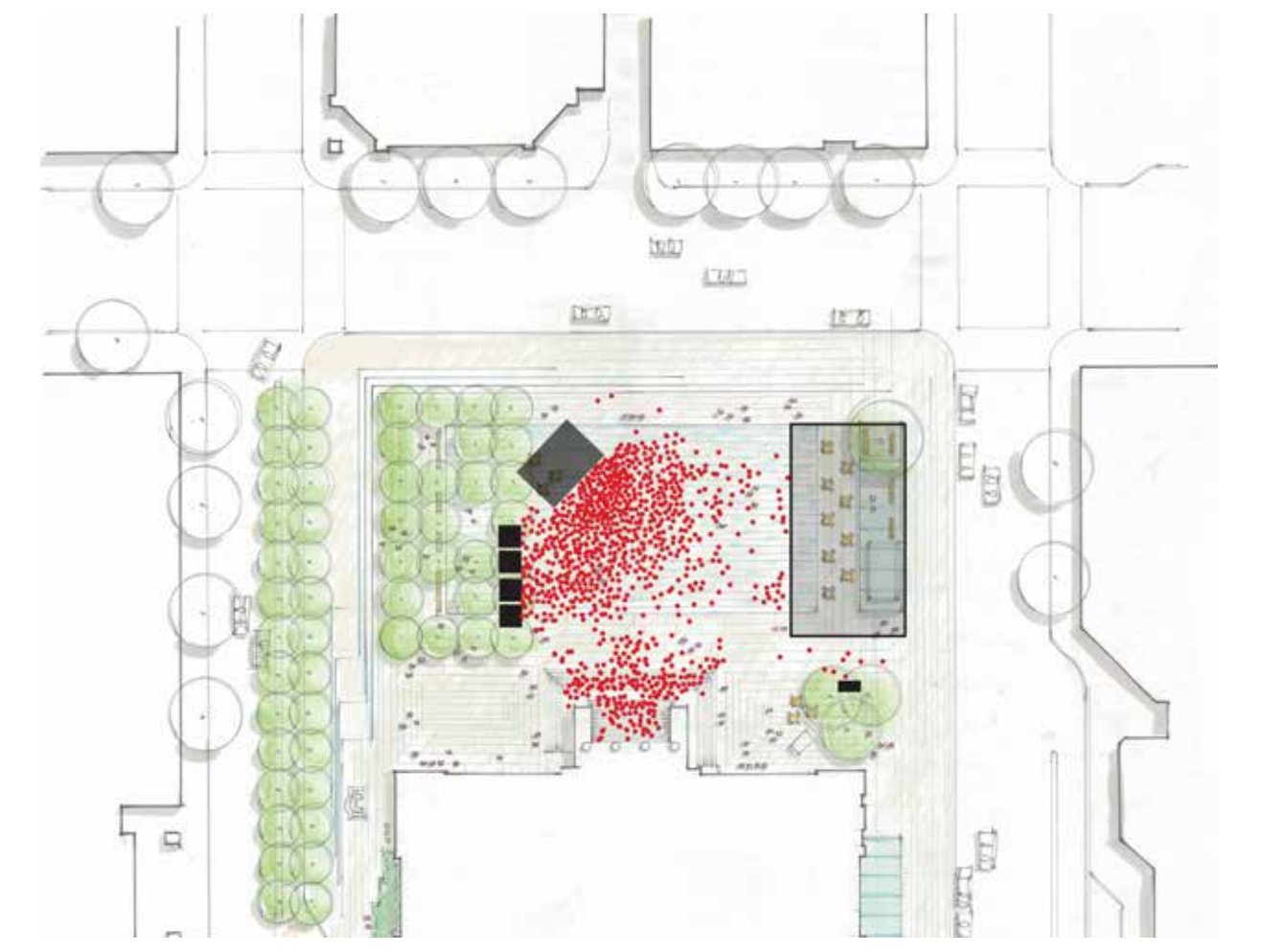
AERIAL VIEW



PROGRAMMING



JAZZ FESTIVAL - SET-UP 1



JAZZ FESTIVAL - SET-UP 2



MOVIE SCREENING

STREET LEVEL VIEW

