



# China Creek North Park Renewal

Public Consultation Findings  
January 2017





# Consultation Overview

- This summary provides an overview of feedback from community members on the proposed upgrades at China Creek North Park. Upgrades include a new playground, a pedestrian connection on the west hill and a pump station replacement.
- Members of the public were asked to provide feedback about potential options related to the playground location, type of pedestrian connection and various pump station options at an open house and in an online questionnaire. The feedback questionnaire ran from December 8, 2016 to January 6, 2017 on the City's online public engagement platform Talk Vancouver. Feedback was also obtained at the open house on December 8, 2016.
- A total of 157 respondents completed the questionnaire. The questionnaire was accessed by email invitation from Talk Vancouver and an open online invitation to the general public via the China Creek North Park Renewal project page on the City of Vancouver website.

## How did we reach out?

- Residents were notified using multiple forums, including:
  - Large posters at the playground site;
  - Flyers distributed throughout the neighbourhood proximate to the site (2-block radius); and
  - Advertising on City of Vancouver Park Board website.



# Summary of Results

The following is a summary of results with the most popular/ preferred responses listed:

- **Playground Location:** Location A (existing location)
- **Playground Type:** Hillside play or nature play themes
- **Playground Elements** (top 5): Natural play, swings, seating, hillside climbing elements, zipline,
- **Stairs or Accessible Pathway:** Stairs
- **Remove East Softball Diamond:** Inconclusive
- **Pump Station Size:** Option A (smaller footprint with fewer amenities)
- **Pump Station Amenities** (top 3): Washrooms, water fountain, picnic tables/ benches
- **Pump Station Materials** (top 3): Local wood, glazed brick/ block, daylighting panels



# Demographics

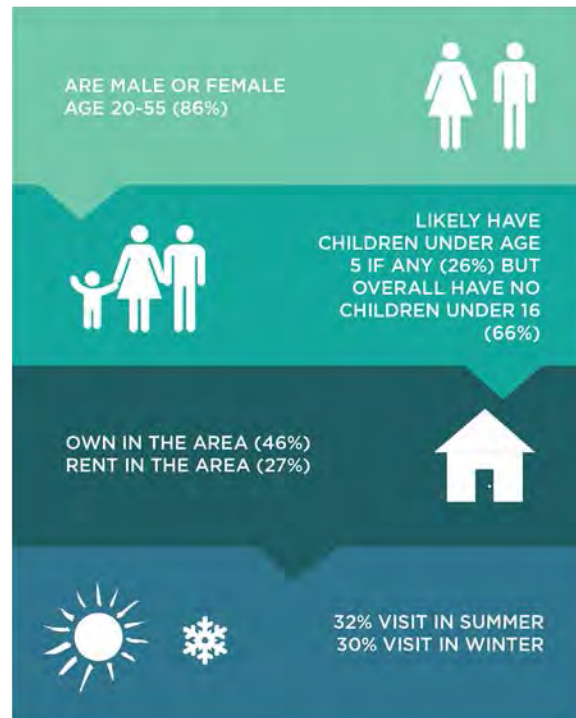


# Demographics

## Who did we hear from?

- The majority of the questionnaire respondents were local residents.

### WHO ARE YOU? THE MAJORITY OF RESPONDENTS:



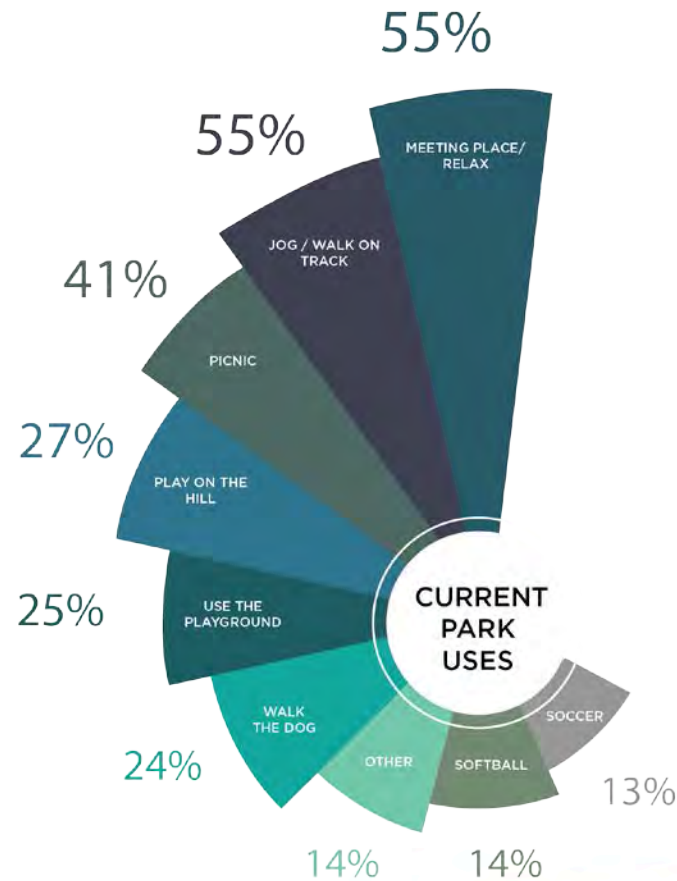


# Questionnaire Topline Results



# Existing Use

What do you do when visiting China Creek North Park?



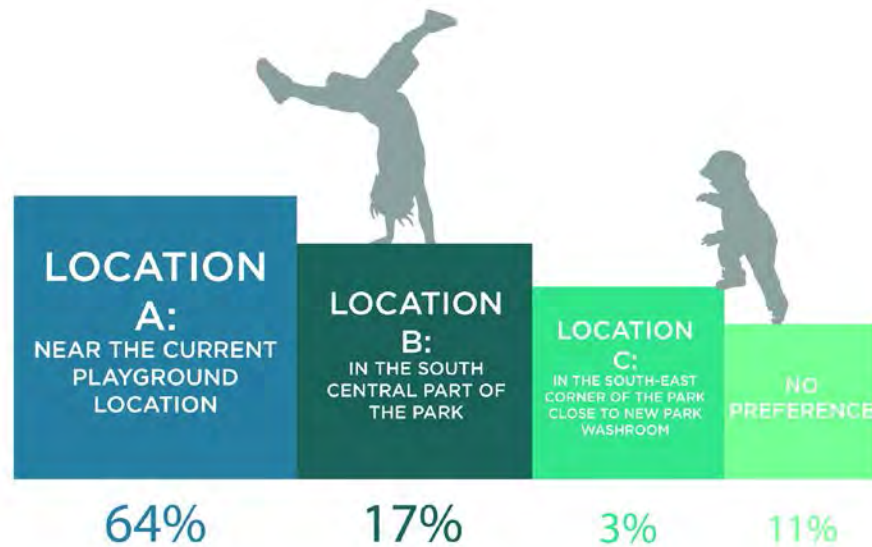


# Preferred Options for the site

## Playground Location

*Which of the following locations do you prefer for the new playground?*

- The majority of respondents would like to see the playground located near the current playground location (Location A)







# Preferred Options for the site

## Playground Location Choices

Respondents were asked why they preferred a particular location over another. The following are some common responses received.



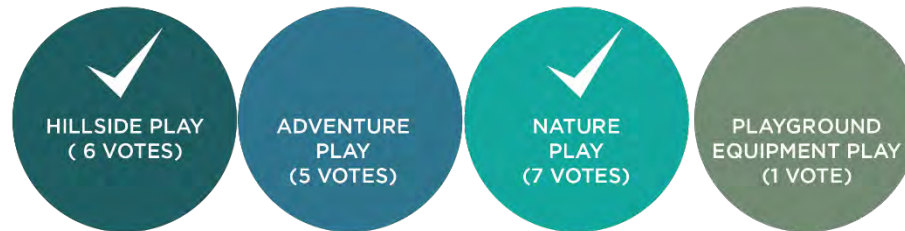


# Preferred Options for the site

## Playground Type

*Which type of playground do you prefer?*

- Respondents attending the open house preferred hillside play or nature play themes

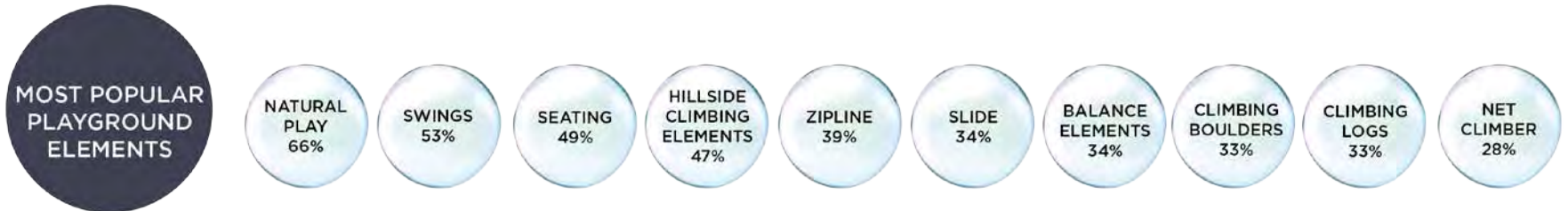




# Preferred Options for the site

## Playground Elements

When asked what features they'd like to see in the playground, respondents preferred the following 10 elements. Results were gathered from both the online questionnaire and the open house.





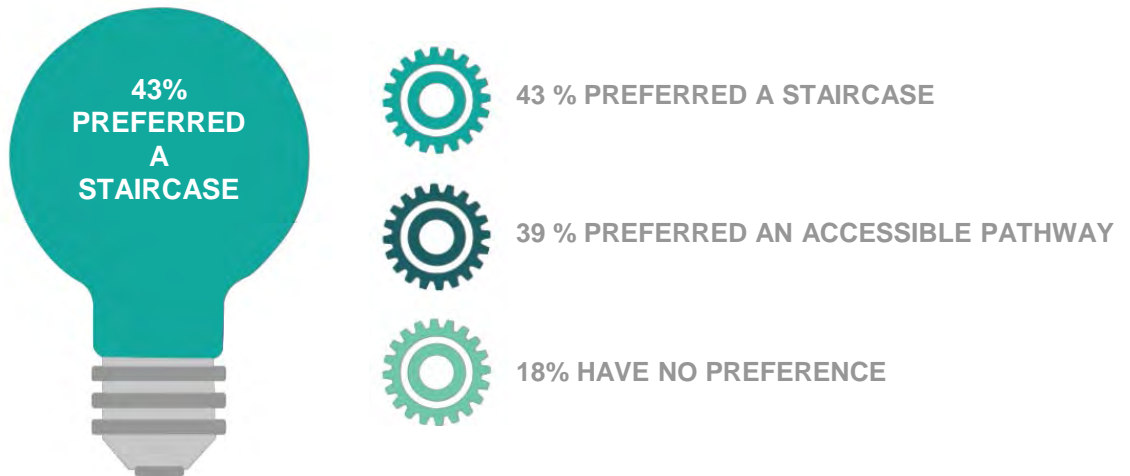
# Preferred Options for the Site

## Hillside Stairs / Accessible Pathway

*How do you feel about creating a pedestrian connection from St. Catherines Street' to Great Northern Way, down the western hill?*

- 88% of respondents were in favour of creating a pedestrian connection

*Do you have a preference between a staircase or accessible pathway?*



Common reasons why people preferred a stairway were:

- Less intrusive than an accessible pathway;
- This park is the best, safest spot for tobogganing for local kids in the winter and a staircase will preserve the valuable hillside.

Common reasons why people preferred a pathway were:

- Accessibility in public spaces is extremely important;
- More people can use it.

*Results to this question were inconclusive - further information is required to make an informed decision.*

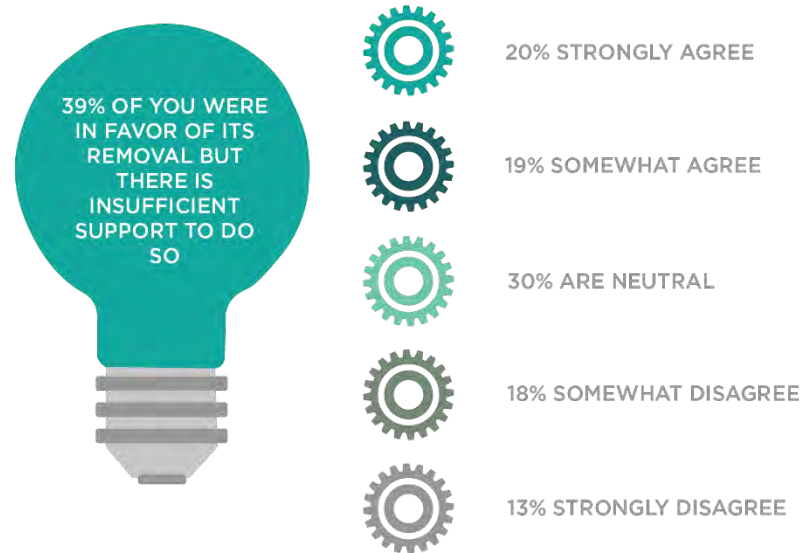


# Preferred Options for the Site

## East Softball Diamond

*Do you agree or disagree with the removal of the east softball diamond to accommodate the playground and pump station in the east section of the park?*

Support for the removal of the east side softball diamond was insufficient to see its removal.



Common reasons why respondents disagreed with the removal of the softball diamond were:

- Both baseball diamonds see regular use;
- Bad location for the playground so the removal of the diamond seems unnecessary;
- Not enough softball fields in the City as is.

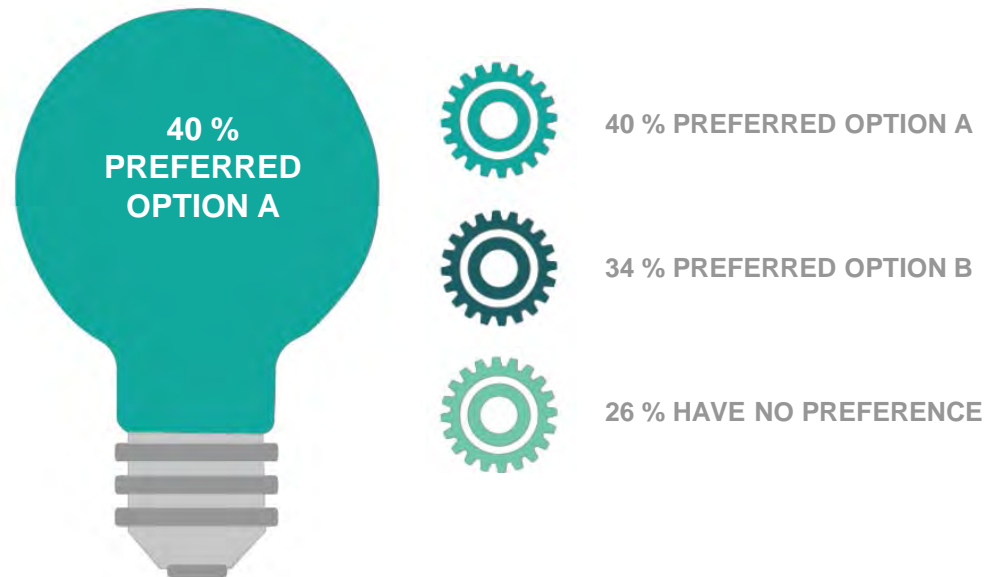


# Preferred Options for the Site



## Pump Station

*Which pump station option do you prefer - A (Limited Impact) or B (Increased Amenities)?*



*Option A: Smaller footprint with fewer amenities but limited impact on the overall park.*

*Option B: Bigger Footprint with Enhanced Amenities*



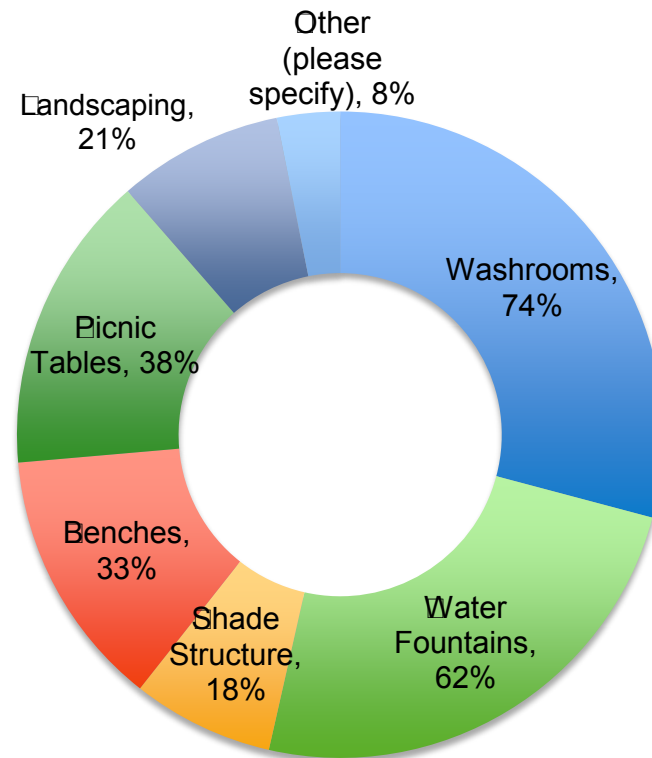
# Preferred Options for the Site



## Pump Station

### ***What kind of amenities are important to you as part of the Pump Station project?***

The following are the preferred amenities at the pump station. Results were gathered from both the online questionnaire and the open house.



### **Top Options:**

1. Washrooms
2. Water Fountain
3. Picnic Table/Benches

Base: All respondents (n=180)



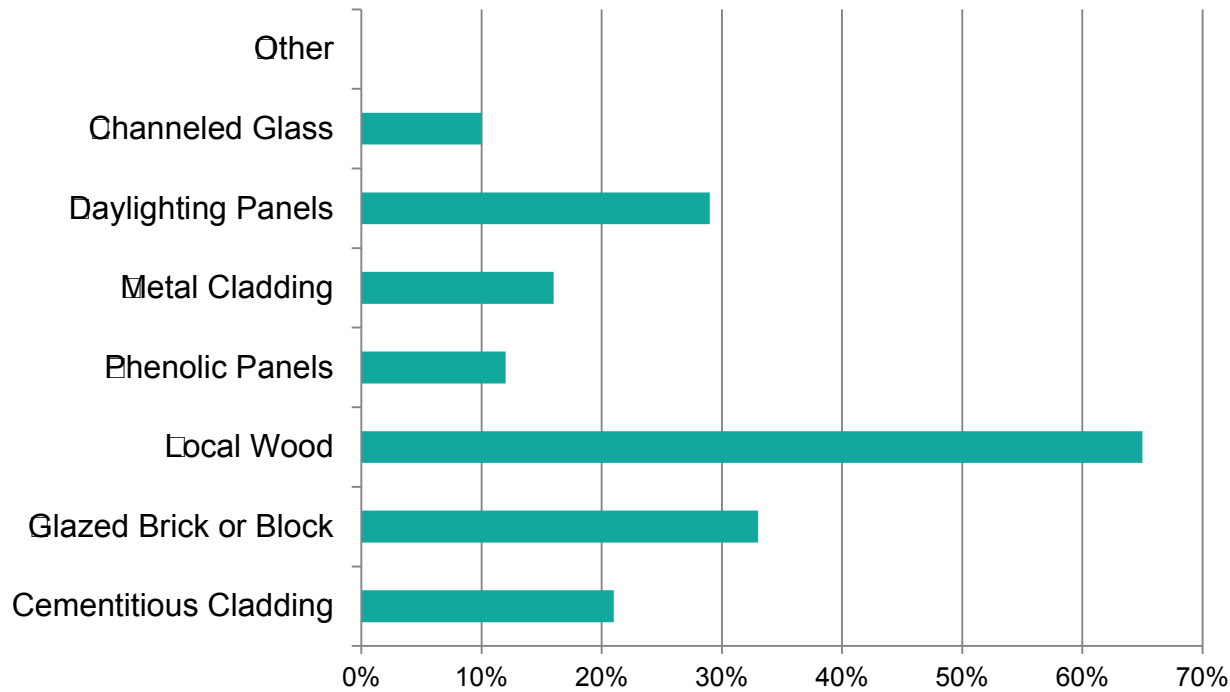
# Preferred Options for the Site



## Pump Station

***What kind of exterior finish would you prefer to see for the new Pump Station and public washroom?***

The following are the preferred exterior finishes for the pump station building. Results were gathered from both online info and open house info.



**Top Options:**

1. Local Wood (69%)
2. Glazed Brick or Block (35%)
3. Daylighting Panels (32%)

Base: All respondents (n=179)





# General Comments

The following are some of the responses received for the question "Please provide any additional comments you may have"

**BIKE AMENITIES:**  
"Since this park is along the Central Valley Greenway bike route, there needs to be cycling amenities like bike racks"

**RUNNING TRACK IMPROVEMENTS**  
"Improving the running track so it is well drained all year round. Keeping the health/exercise stations along the way and improving or adding to these would be great."

**WASHROOMS**  
"More amenities, including washrooms, would be appreciated."

**STAIRS/ACCESS**  
"Most important issue for me is having some kind of access from top of the hill to the northwest corner of the park. This would be wonderful as more businesses move into the area and traffic steadily increases."

**PRESERVE THE HILL**  
"Really, my biggest request is not to put switchbacks or play things on the hill that would make it impossible to sled down in the winter or slide down in the summer."

**AMENITIES**  
"I just ask that a year long water fountain be installed. It's very tough when you run all year to run out of water."

**DOGS**  
"We desperately need a fenced dog park in the general area."