

PUBLIC INFORMATION SESSION  
**WELCOME**

## What is happening?

The Vancouver Board of Parks and Recreation is working to improve the quality of children's play experiences throughout the city. The Park Board is collaborating with Landscape Architects at PWL Partnership to design a new playground that will replace the existing east play area at Clark Park.

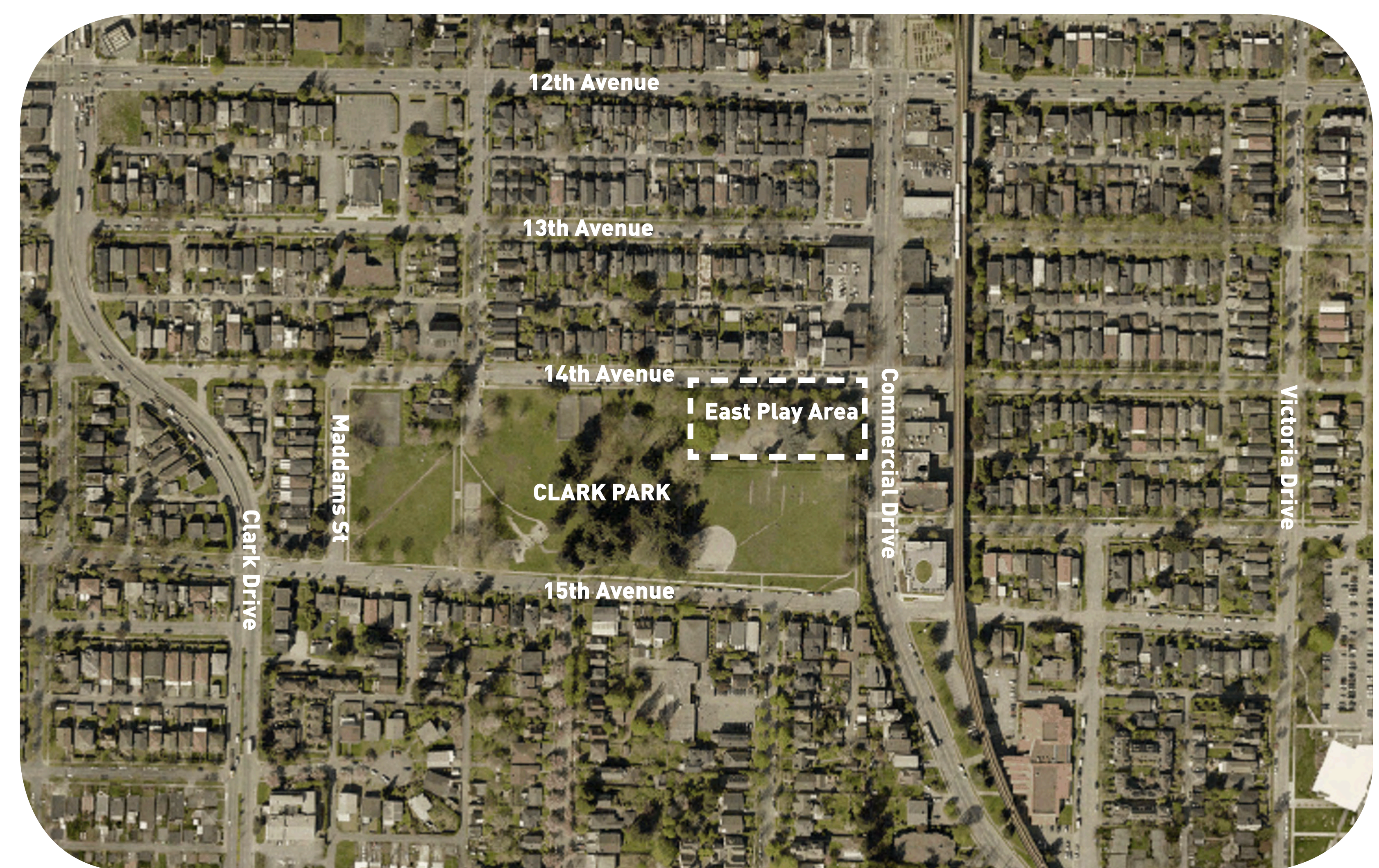
The goal is to create a more engaging, diverse, and accessible play experience that will serve a wider age range and ability level of children.

We have prepared two preliminary design options for your review. After this meeting we will review the feedback and develop the final design option that will incorporate the comments we hear today.

Thank you for taking the time to review the proposed design concepts. We look forward to hearing your feedback!

## Goals for Today

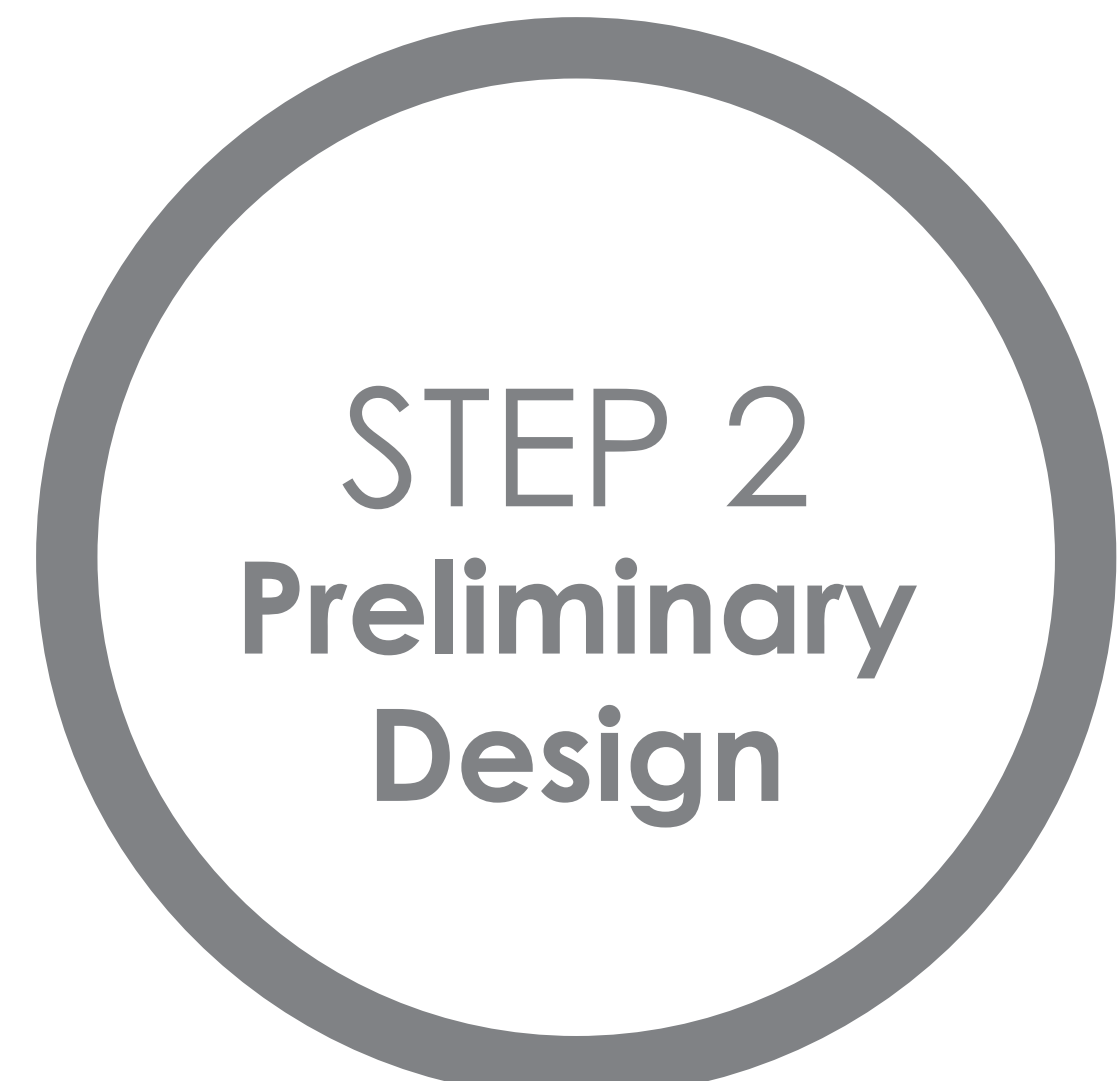
1. Show you what we've learned so far
2. Tell us your thoughts about the preliminary design concepts
3. Vote for play equipment you'd like to have
4. Let us know if we've missed anything



Context Plan



MARCH / APRIL 2016



FALL 2016



**WE ARE HERE**  
DECEMBER 2016



WINTER-SPRING 2017



SUMMER 2017



FALL 2017

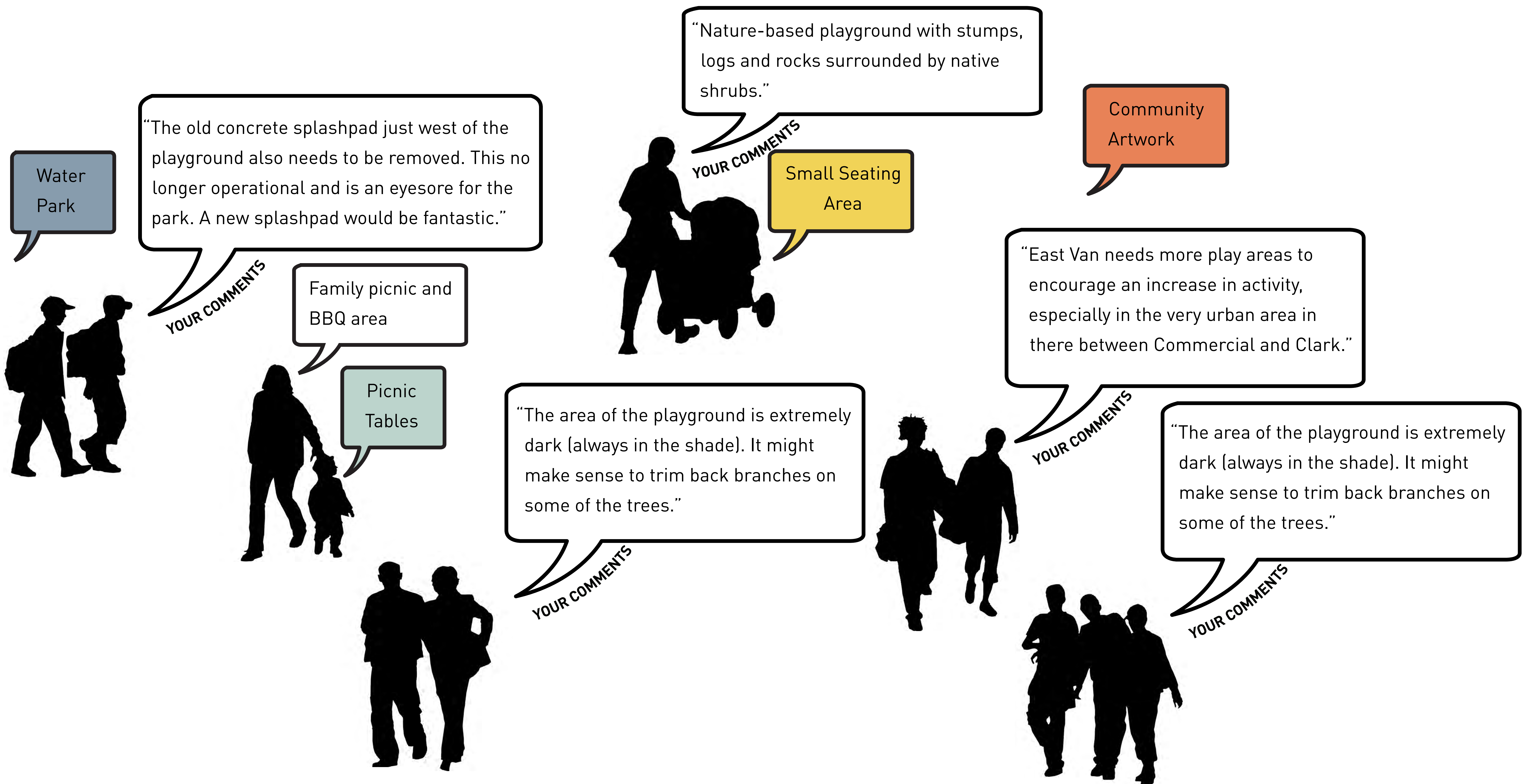


# WHAT WE'VE LEARNED ABOUT THE EXISTING PLAYGROUND

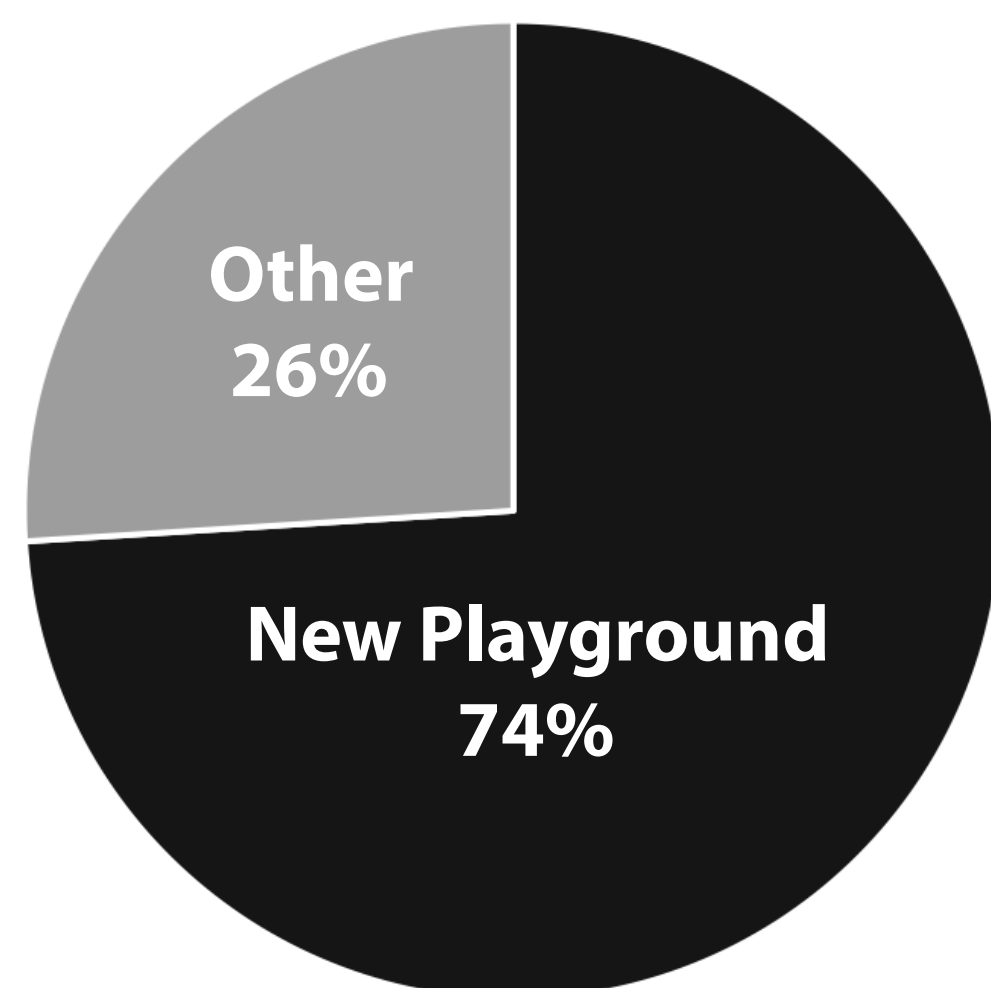
## What have we heard so far?

The Vancouver Park Board proposed to remove the play structure on the east side of Clark Park due to its age, condition, and safety concerns. In an online questionnaire, members of the public were asked to provide feedback about potential options for the site.

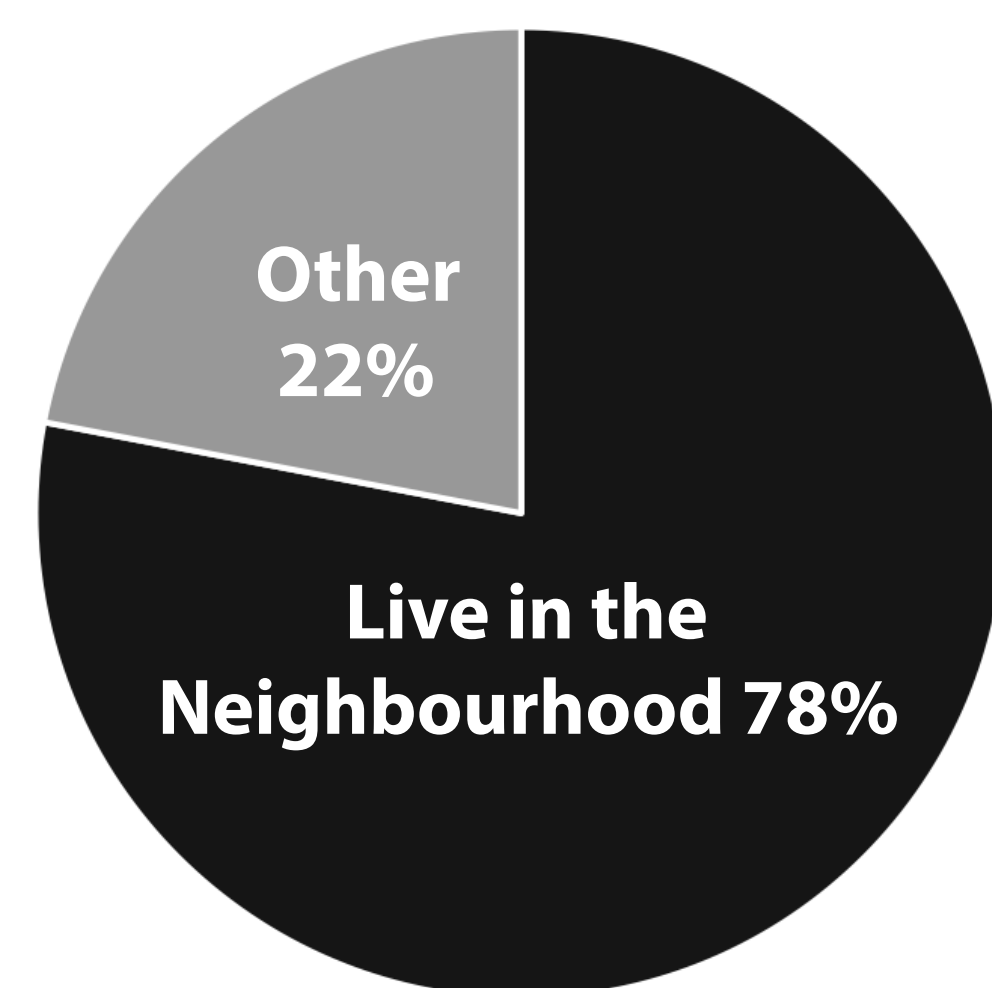
A total of 283 respondents completed the questionnaire. Below is a summary of the feedback from the community.



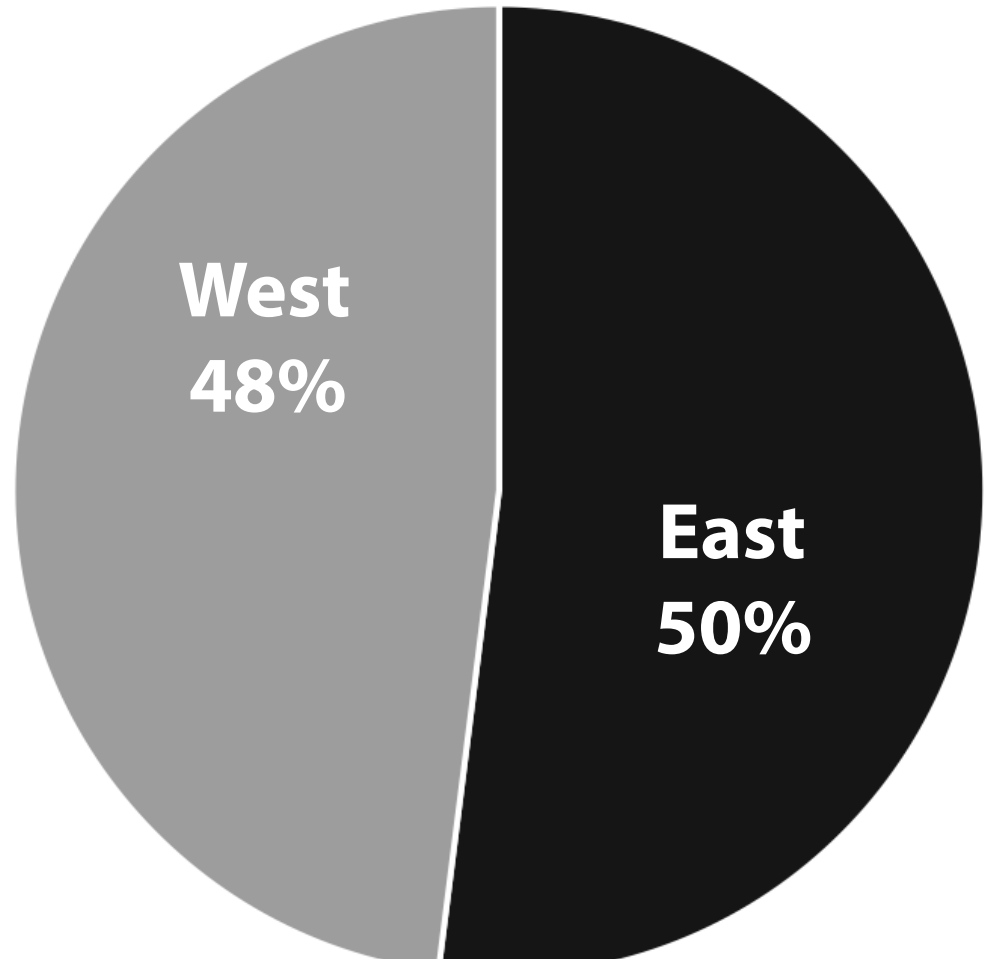
What would you like to see in place of the current structure?



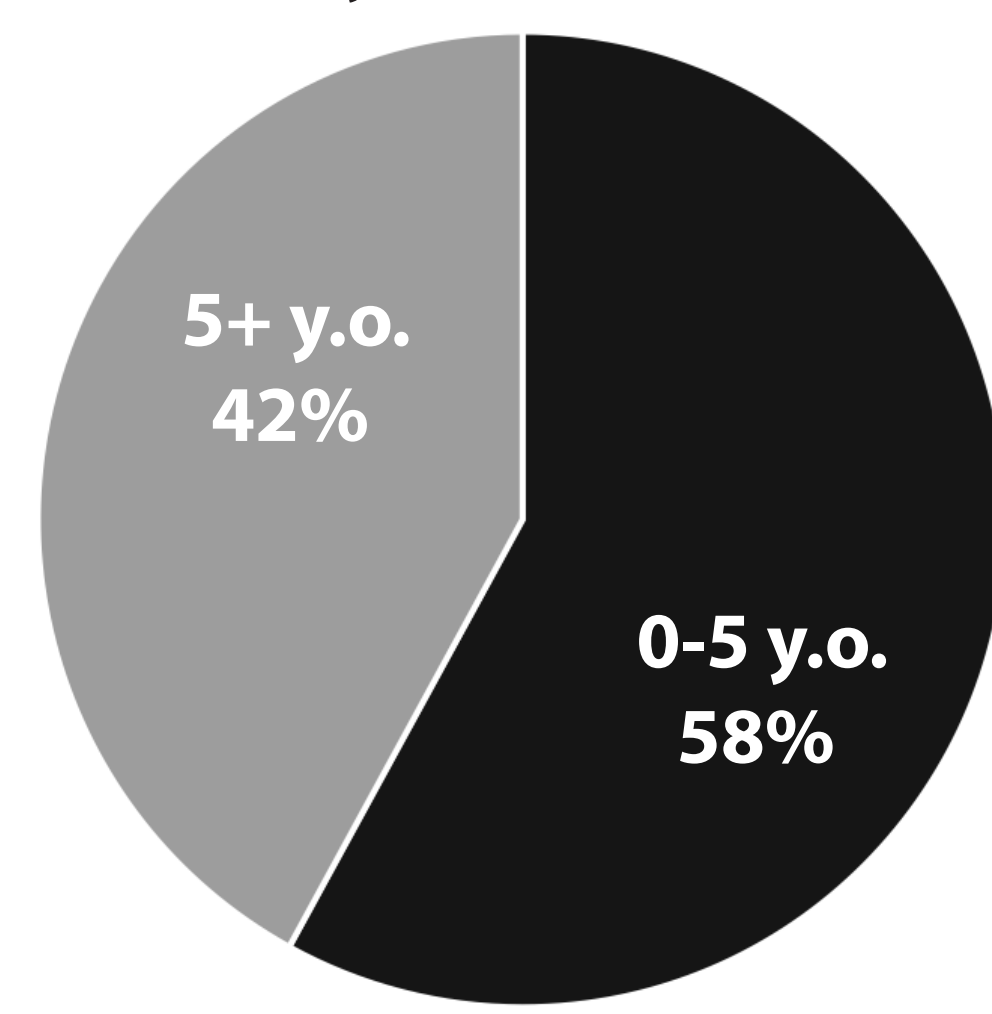
What is your connection to Clark Park?



Which playground does your child/children use?



How old is your child/children?



## Design Guidelines

Based on the outcomes of the questionnaire we have developed following guidelines for the design of the playground:

- Create a varied playground that offers play opportunities for a broad range of age groups
- Celebrate and preserve significant trees located within the park
- Offer active, creative, and social play opportunities to ensure a well-rounded play experience
- Provide comfortable seating with clear views of the playground for parents and supervisors
- Provide open views to the playground to ensure safety
- Include a picnic area
- Offer opportunities for universally accessible play



## Second Oldest Park in Vancouver

Clark Park is the second oldest park in Vancouver only following Stanley Park. It was created in 1889 and is home to a number of significant deciduous and evergreen trees. The park offers stunning views of Downtown, the North shore mountains, and the tree canopy within the park itself.

This amazing setting calls for play elements and materials that will be in harmony with their surroundings. Nature-based play, timber, stones, birdhouses, water and sand have made their appearance in the proposed designs.

### Trees of Clark Park



Thuja plicata - Western Red Cedar



Cedrus libani - Lebanese Cedar



Quercus palustris - Pin Oak

### Play Inspiration



*"Passion is lifted from the earth itself by the muddy hands of the young; it travels along grass-stained sleeves to the heart."*

Richard Louv, Last Child in the Woods: Saving Our Children from Nature-Deficit Disorder



# ANALYSIS

## Where should the new playground go?

We heard many comments that the current location of the play area is too dark and shady. The existing mature trees are also a concern - we do not want to disturb their sensitive root zones during construction. Working in the areas that have been previously disturbed and staying outside of the Critical Root Zones (CRZ) is a must.

We have completed a detailed analysis of the existing conditions to determine the best location for the new playground.

### Existing Conditions



Play equipment at the end of its lifespan



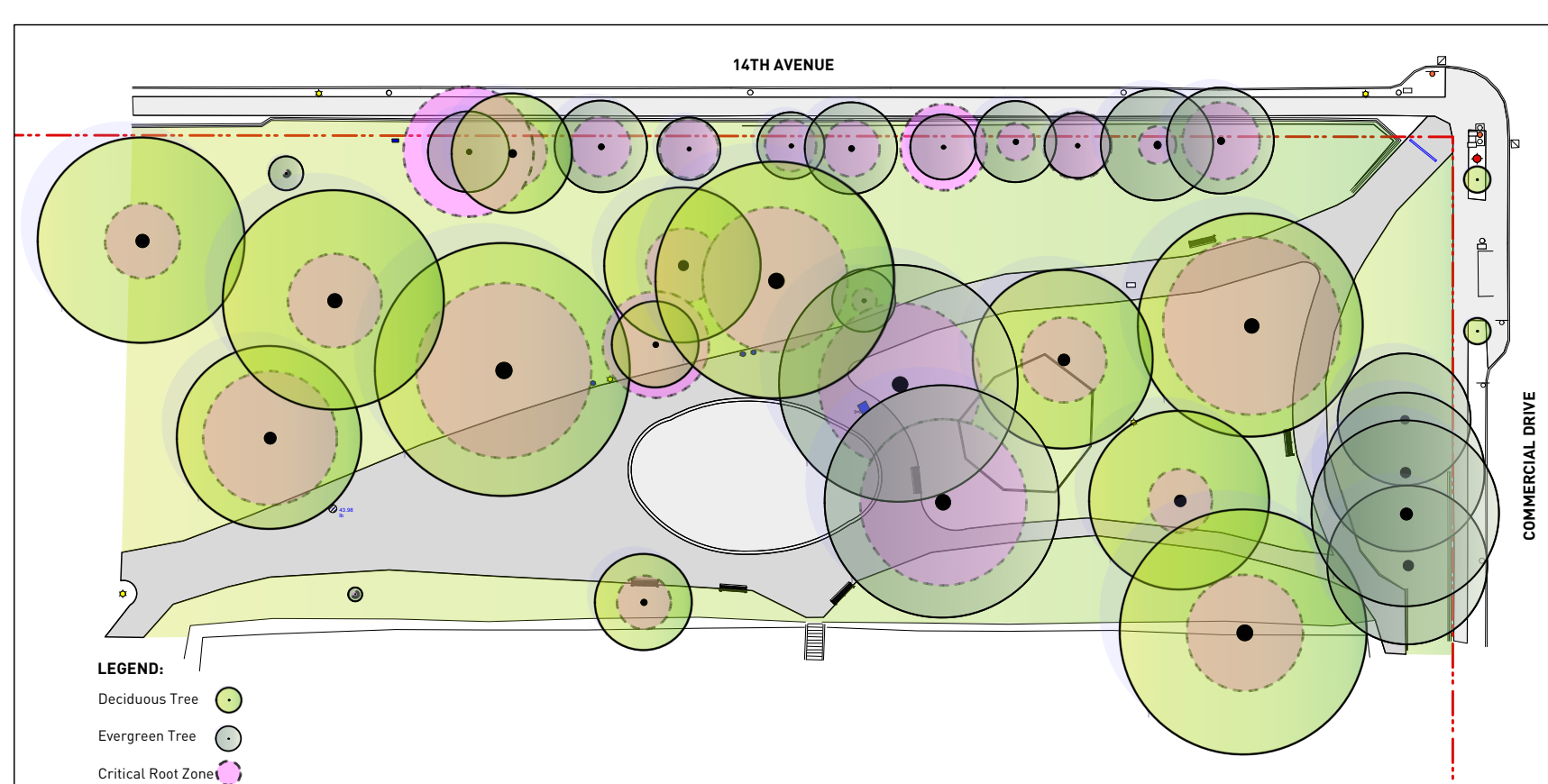
Decommissioned water pad



Mature tree canopy and views

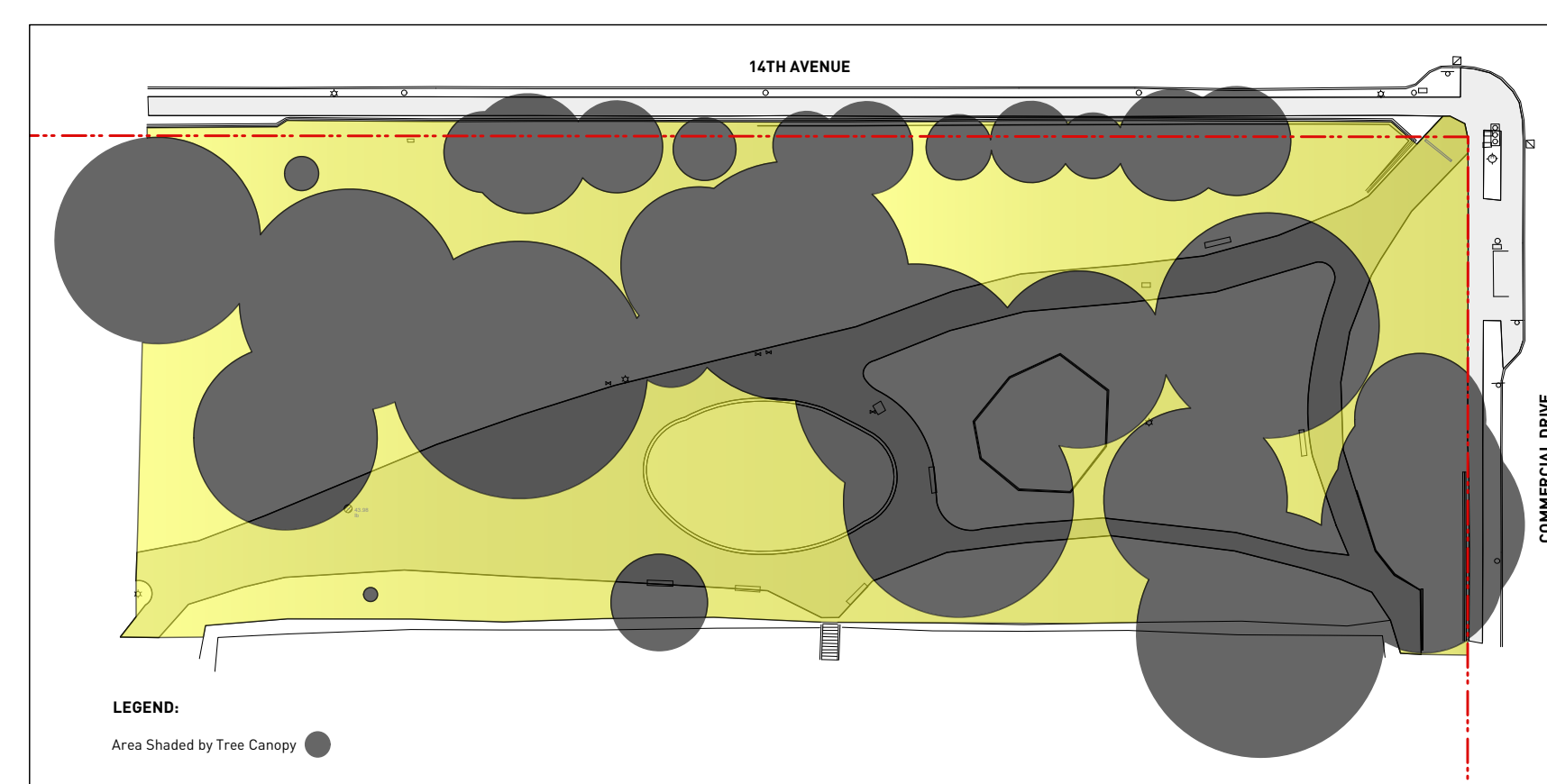
### Site Analysis

#### CRITICAL ROOT ZONE



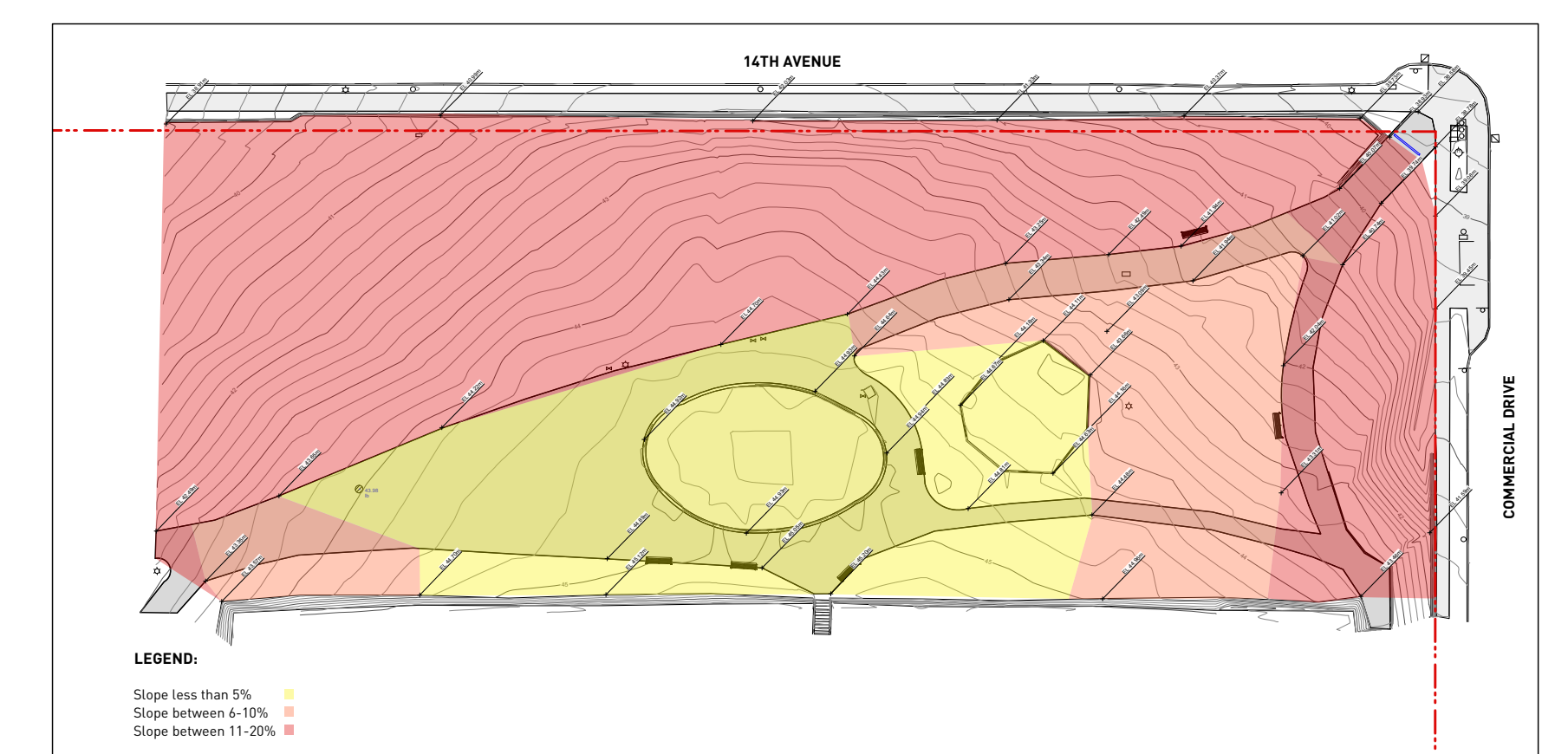
- There is a number of significant existing trees in Clark Park
- Excavation and disturbance should be avoided within CRZ zones and minimized within the driplines of the existing trees

#### SUN AND SHADE



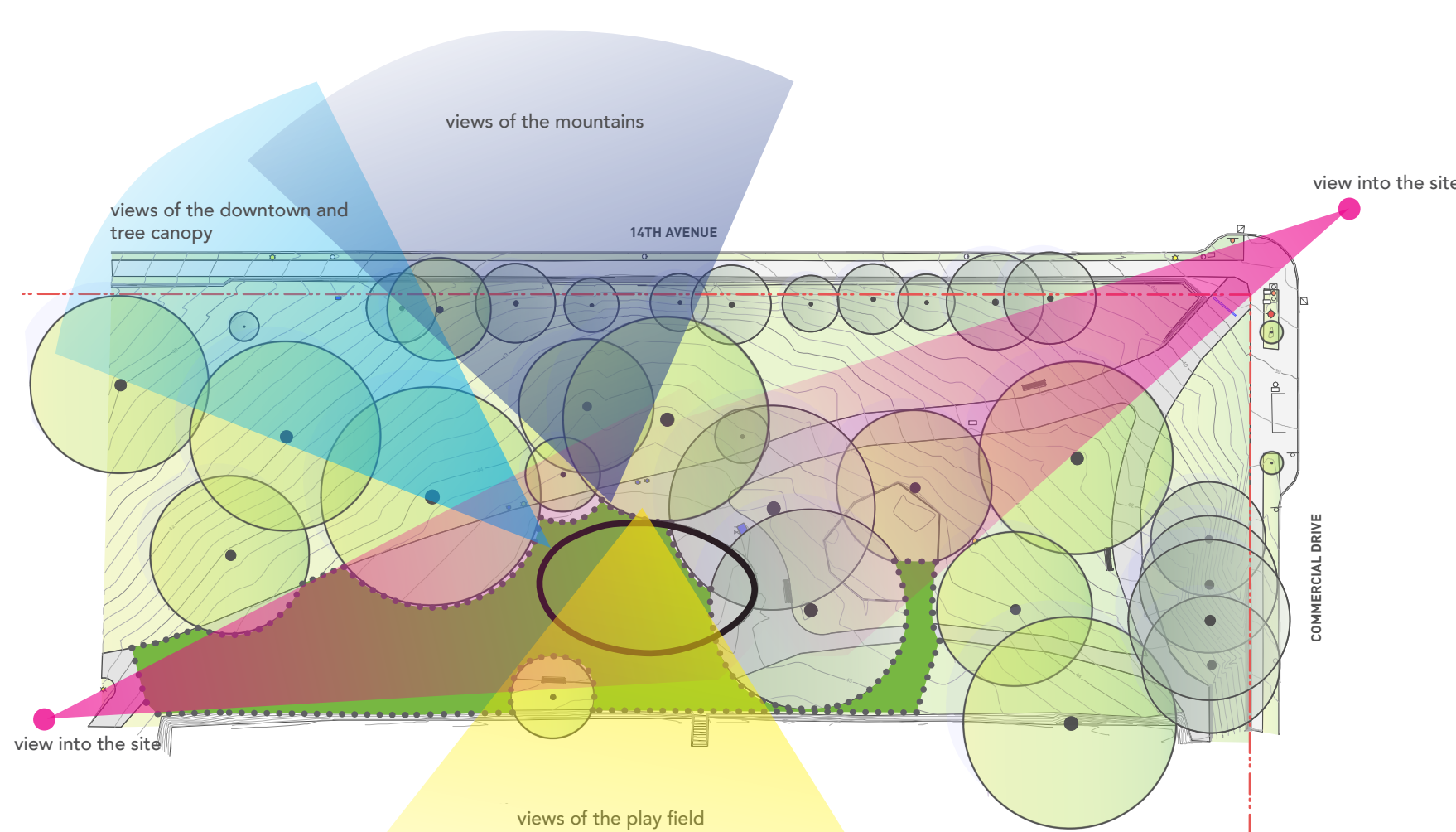
- Play areas should allow for access to sunshine
- There should be a mix of shaded and sunny seating

#### SLOPES



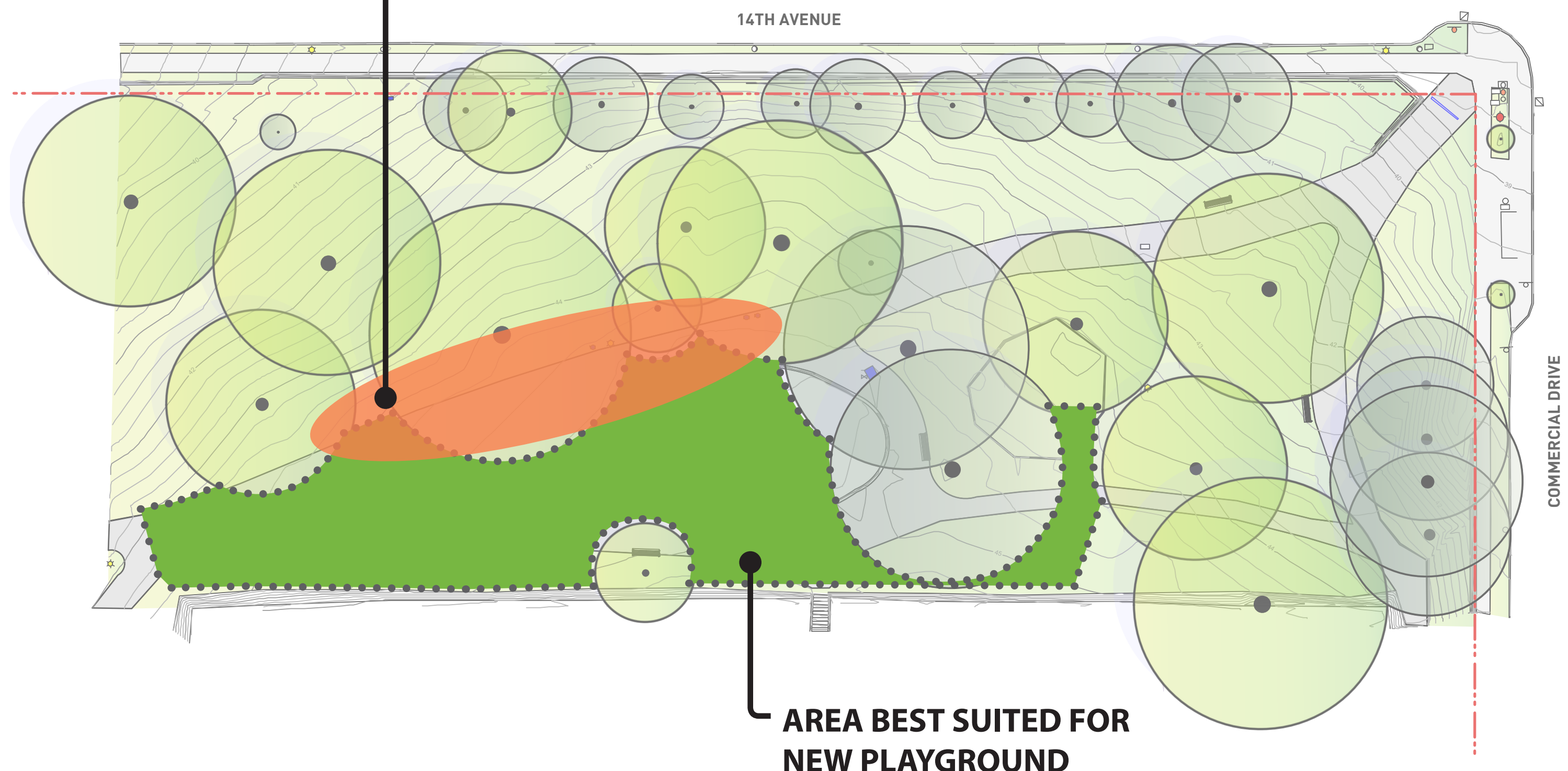
- Developing a play area where slopes are greater than 5% is costly and will cause severe root disturbance to existing trees
- Some play elements, such as hill slides, can be incorporated into sloping terrain, but the existing slopes are not sufficient for slides

#### VIEWS



- The area north and west of the existing pool features stunning views of the downtown and the park's tree canopy. It is also has better visibility from 14th Avenue and entry points than the existing seating nearby

#### AREA BEST SUITED FOR SEATING AND PICNIC TABLES



AREA BEST SUITED FOR NEW PLAYGROUND



TELL US ABOUT...

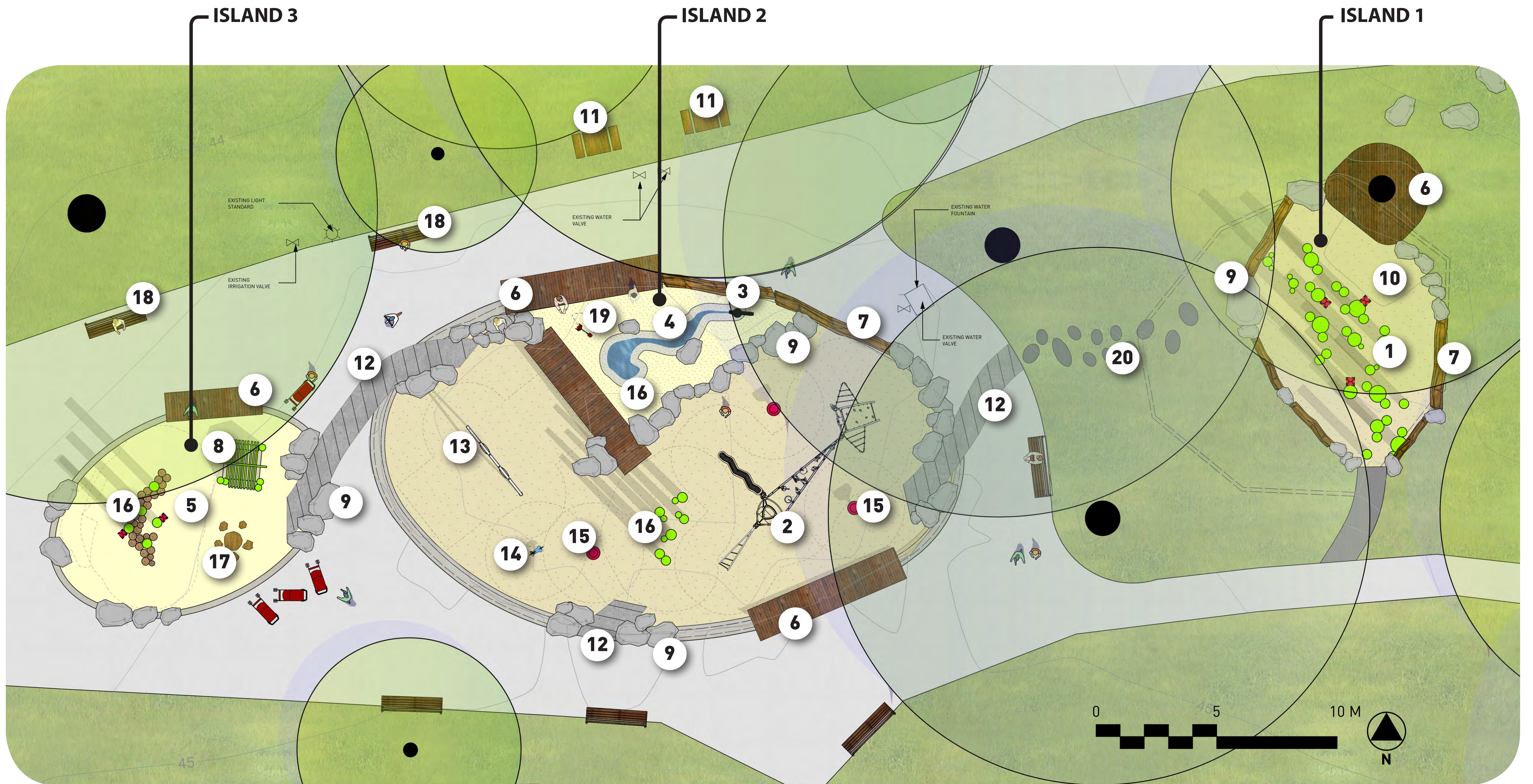
# OPTION 1

Option 1 creates three play islands separated by pathways. Island #1 features a log climber and a seat around an existing tree. Island #2 offers sand and water play, climbing, spinning activities, and a toddler swing. Island #3 is the toddler zone complete with a play hut, spring toys, and stepping logs.

Please put your comments on the sticky notes provided and place them on the plan. If they don't relate to a specific location, please place them on the side of the board.

## LEGEND

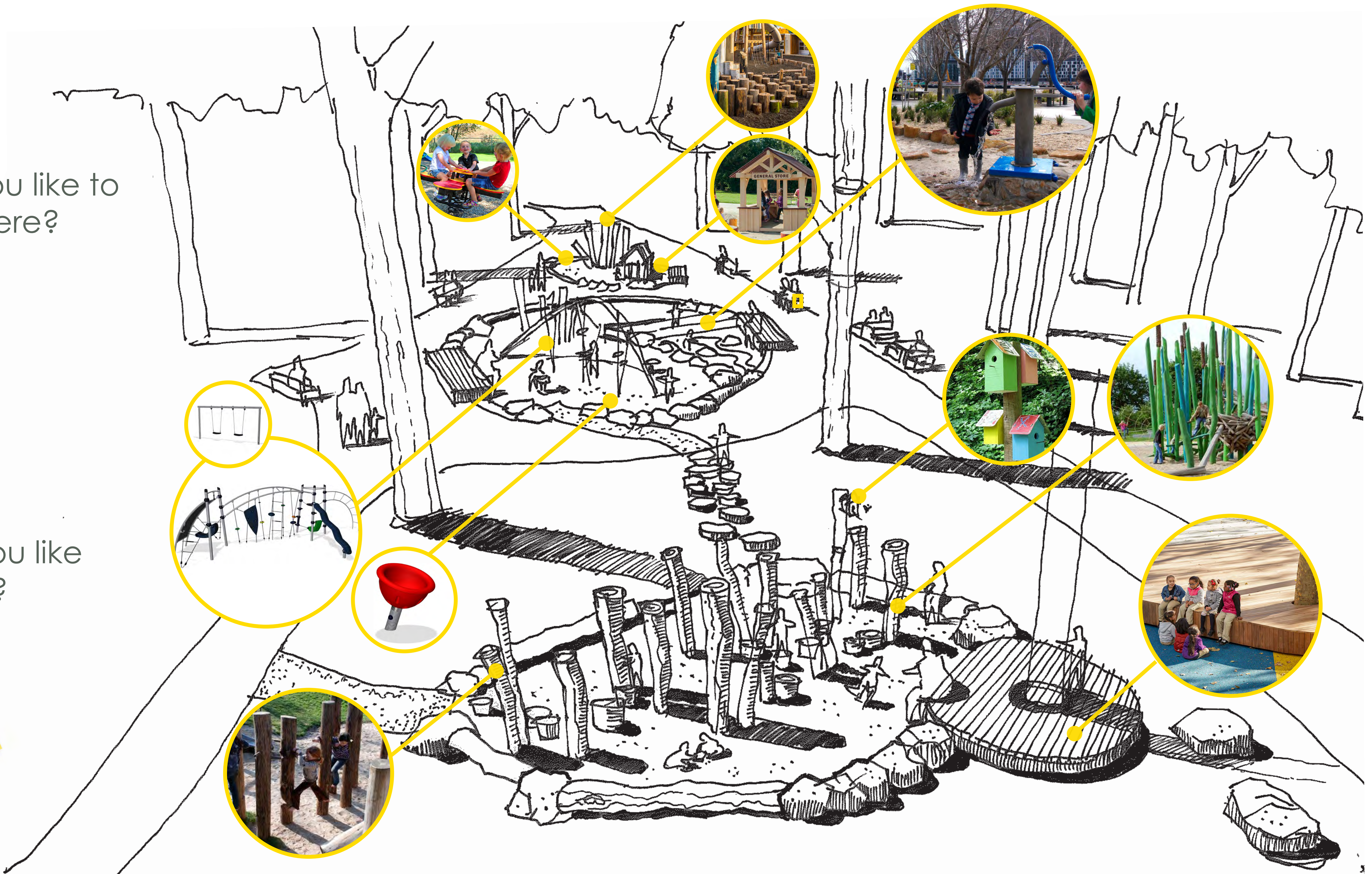
- 1 FEATURE LOG CLIMBER
- 2 CLIMBER 5-12Y
- 3 WATER PUMP
- 4 WATER AND SAND PLAY
- 5 SAND PLAY
- 6 TIMBER DECK
- 7 TIMBER LOGS
- 8 TIMBER PLAY HOUSE
- 9 BOULDERS
- 10 WOOD CHIPS
- 11 PICNIC TABLE
- 12 CONCRETE PATH AND RAMP
- 13 TODDLER SWING
- 14 SPRING TOY
- 15 SPINNER
- 16 STEPPING LOGS
- 17 STUMP TABLE AND CHAIRS
- 18 NEW BENCH
- 19 SAND DIGGER
- 20 STEPPING STONES



What would you like to see different here?



What would you like stay the same?





TELL US ABOUT...

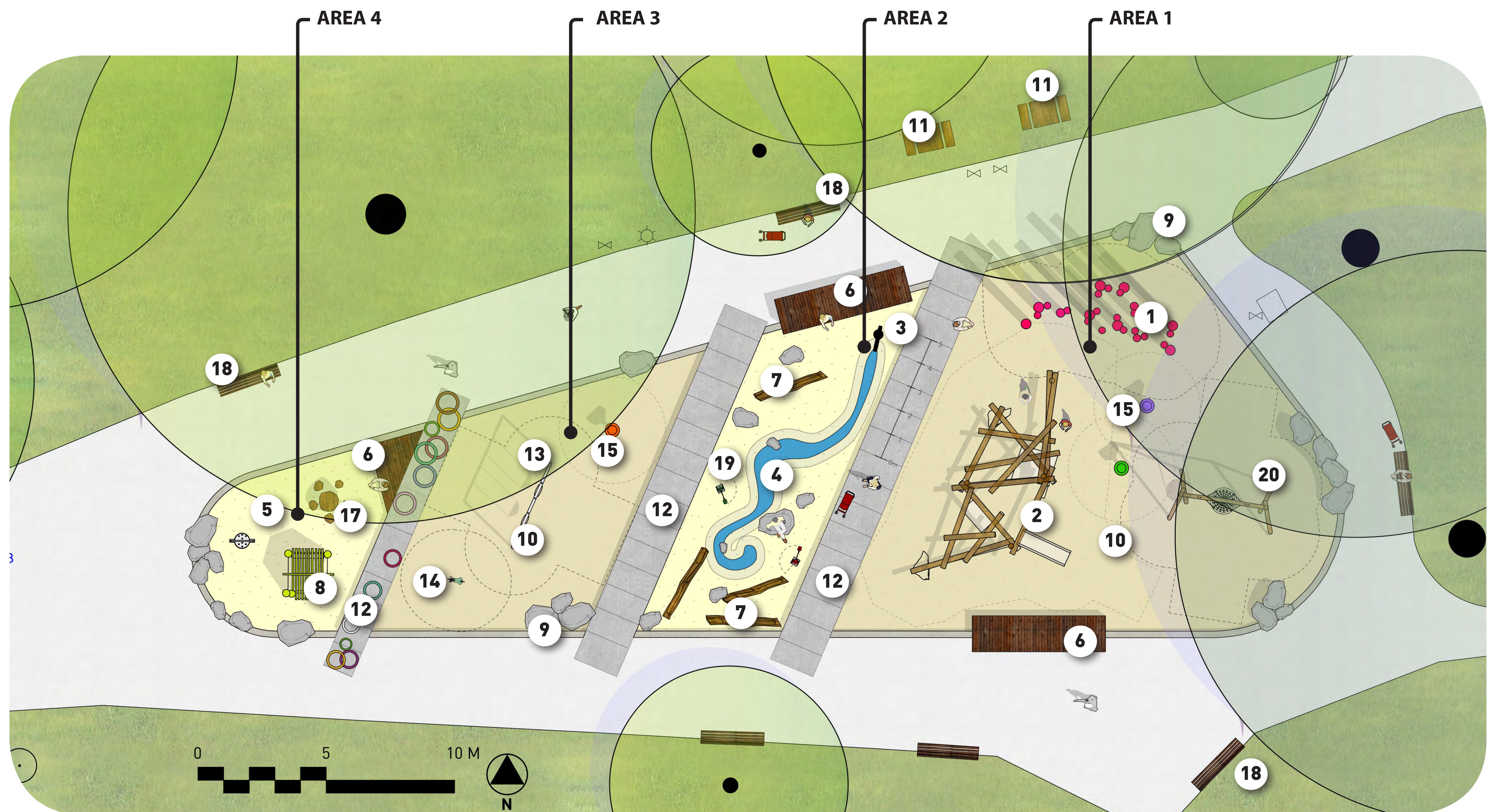
# OPTION 2

Option 2 consists of one large play space that is divided to create smaller spaces for specific age groups. Area 1 features a log climber, a dish swing, and climbing timber posts. Area 2 is focused around water and sand play. Areas 3 and 4 are dedicated to toddler play and include tot swings, spring toys, play hut, sand toys, and stepping logs.

Please put your comments on the sticky notes provided and place them on the plan. If they don't relate to a specific location, please place them on the side of the board.

## LEGEND

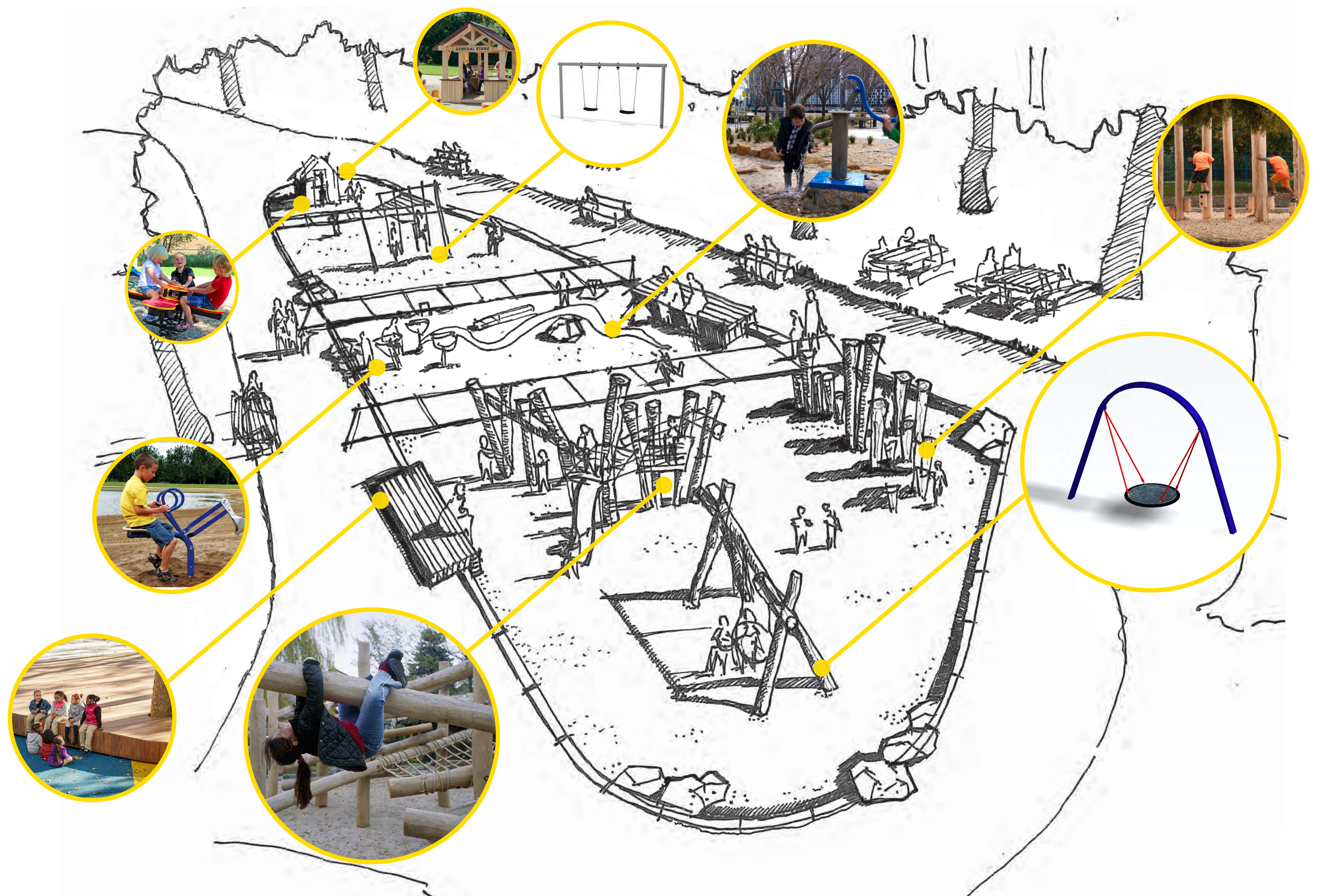
- 1 CLIMBING LOGS
- 2 LOG CLIMBER 5-12Y
- 3 WATER PUMP
- 4 WATER AND SAND PLAY
- 5 SAND PLAY
- 6 TIMBER DECK
- 7 TIMBER LOGS
- 8 TIMBER PLAY HOUSE
- 9 BOULDERS
- 10 WOOD CHIPS
- 11 PICNIC TABLE
- 12 CONCRETE PATH
- 13 TODDLER SWING
- 14 SPRING TOY
- 15 SPINNER
- 17 STUMP TABLE AND CHAIRS
- 18 NEW BENCH
- 19 SAND DIGGER
- 20 DISH SWING



What would you like to see different here?



What would you like stay the same?





## Help us choose the play equipment

There are only so many play pieces that we can pack into one playground!

Use sticky dots to choose **top five** play pieces that you would like to see built.

Medium Size Net Climber



Parkour Course Climber



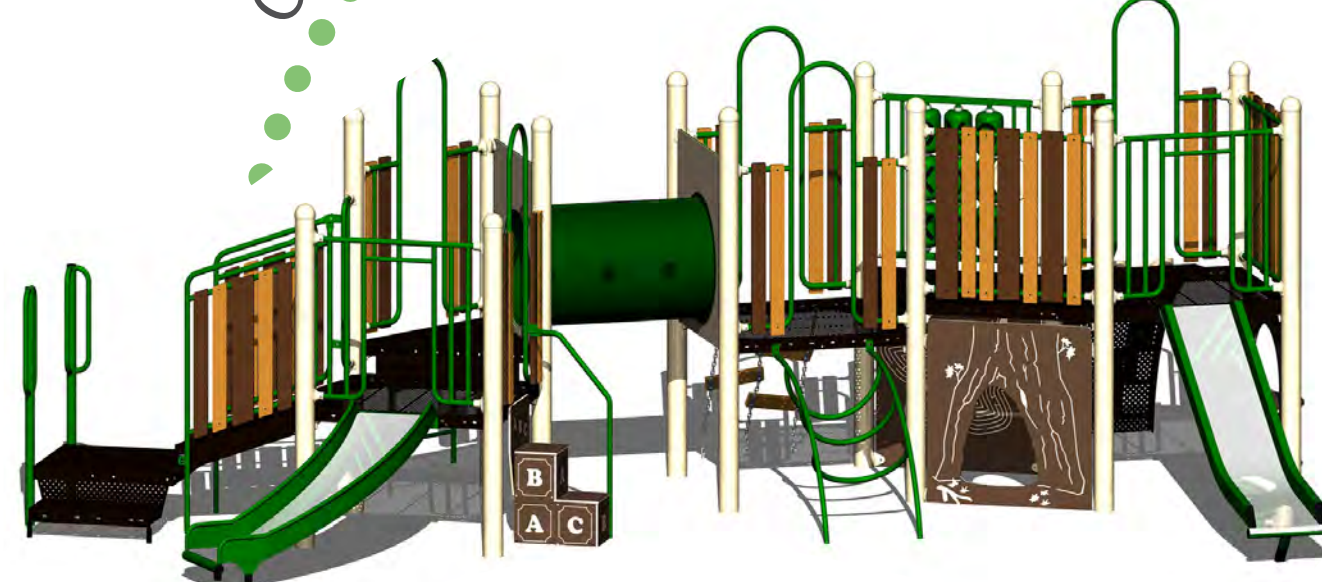
Play House



Toddler Swings



Conventional 5-12 Climber



Log Jam Climber



Conventional 2-5 Climber



Sand and Water Play



Balance Course



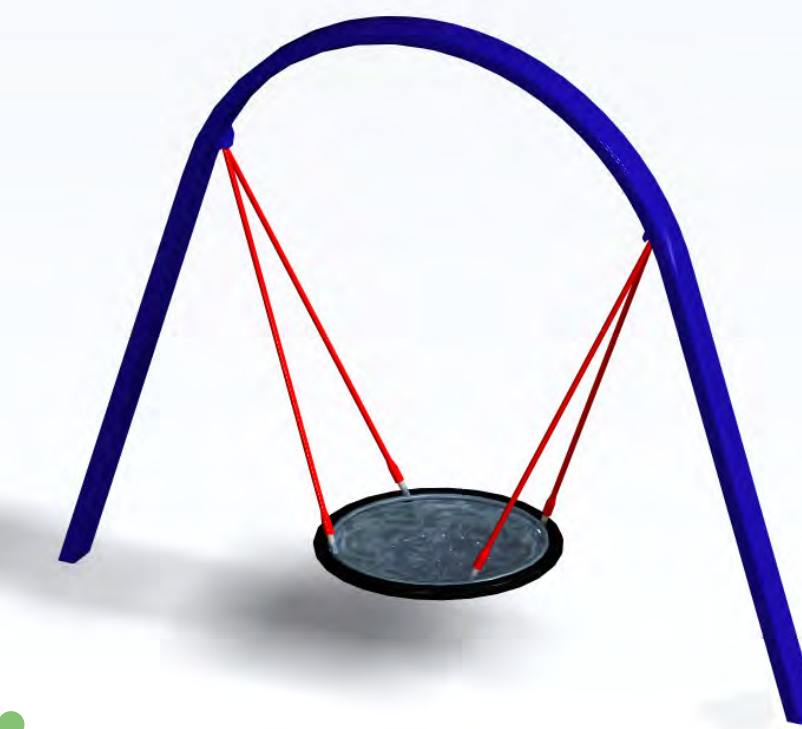
Spinners and Wobblers



Nature Inspired Play



Dish Swing



Don't see what you want?  
Feel free to add more!



Monkey Bars



Slide

