

LEGEND

- Concrete to CDV standard
- 1" Corrosion Resistant Reinforcing Steel
- 2" Corrosion Resistant Reinforcing Steel
- CP Coloured Concrete Pavement
- CP Coloured Concrete Lanyard
- Planting average number 2 jobs min. 1.5m
- Private hedge between units - 1.2m high
- Sodded Lawn
- Grass Sods
- 4x4 decking boards
- Titan Fall with Granite Stone mat
- Proposed Sealing - Custom design
- Waterfeature
- Sheet Pile Wall/Vault
- Form Table
- Shoring above ground framing - CP Corrosion Resistant
- Custom Street Lights
- Titan Windows

CONCERT

QUEBEC & 1st BUILDING 2

OVERALL LANDSCAPE PLAN

DATE: OCT 28/2014
 DRAWN BY: [Name]
 CHECKED BY: [Name]

RICHARD HENRY ARCHITECT INC.

RAPHAEL ARCHITECTS INC.

TEL: 416-593-7333
 416-593-3522
 7th Floor, 100 Front Street East
 Toronto, Ontario M5E 1B3
 501 E. ONE
 2ND FLOOR
 VICTORIA PARK BLVD
 VANCOUVER, BC V6C 2S8

duramitek

MANITOWAN ID. LANDSCAPE ARCHITECTS
 1000 W. 10TH AVENUE, SUITE 100
 WILSON, COLO. 80190
 TEL: 303-440-2200



No.	Date	Description
1		
2		
3		
4		
5		
6		
7		
8		
9		
10		



**RICHARD HENRY
ARCHITECT INC.**

RAPILAR ARCHITECTS INC.
 111 604.688.3655
 404 644.3322
 404 644.4444
 raphael@architects.com
 info@architects.com
 5011 1500 Avenue 57
 West Vancouver, B.C.
 V8W 2T8 CANADA

CONCERT

**1551 QUEBEC STREET
BUILDING 2**

OPEN SPACES

Project No.	1551
Design No.	
Drawn	ASLS
Checked	ASLS
Date	0-10
Scale	
Author	
Designer	



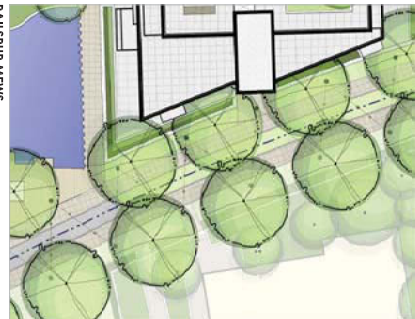
SWITCHMEN STREET

- Connecting Quebec Street with the central laneway, steel trees and generous planted lookovers the switchmen.
- Concrete slabs allow people to get in and out of cars.
- Standard street city approved lights to match.
- Switchmen, part of Quebec.
- Street lighting, including streetlights.
- Steel and gates separate the private spaces from the public realm.
- Concrete provides privacy for the private parking and views out to the street.



NEW LANEWAY

- Providing the north, south link from Switchmen to Fitz Avenue, the lane provides a contemporary hard landscape edge to the building courtyard, open and outdoor plaza. The square form an important focus for the new community center visible access to the underground parking and for delivery. Not exclusively a walkway, but also not an alley, the alley laneway sets on urban form, introducing a secure "street" presence, but also functioning to discourage random traffic.
- Planted corner balconies at each end of the site soften the pedestrian realm.
- Planting defines and softens the edge of the laneway with openings of key trees to allow for circulation.
- Low planting allows for social utilization of the plaza but also allows to maintain openness.
- Concrete slabs will also be used on bonding across the lane, carried on the new piers.
- Custom Helicon Light Standards line the West side and west the public realm with light from one direction.
- Loading spots are provided for buildings 2, 3 and 4.



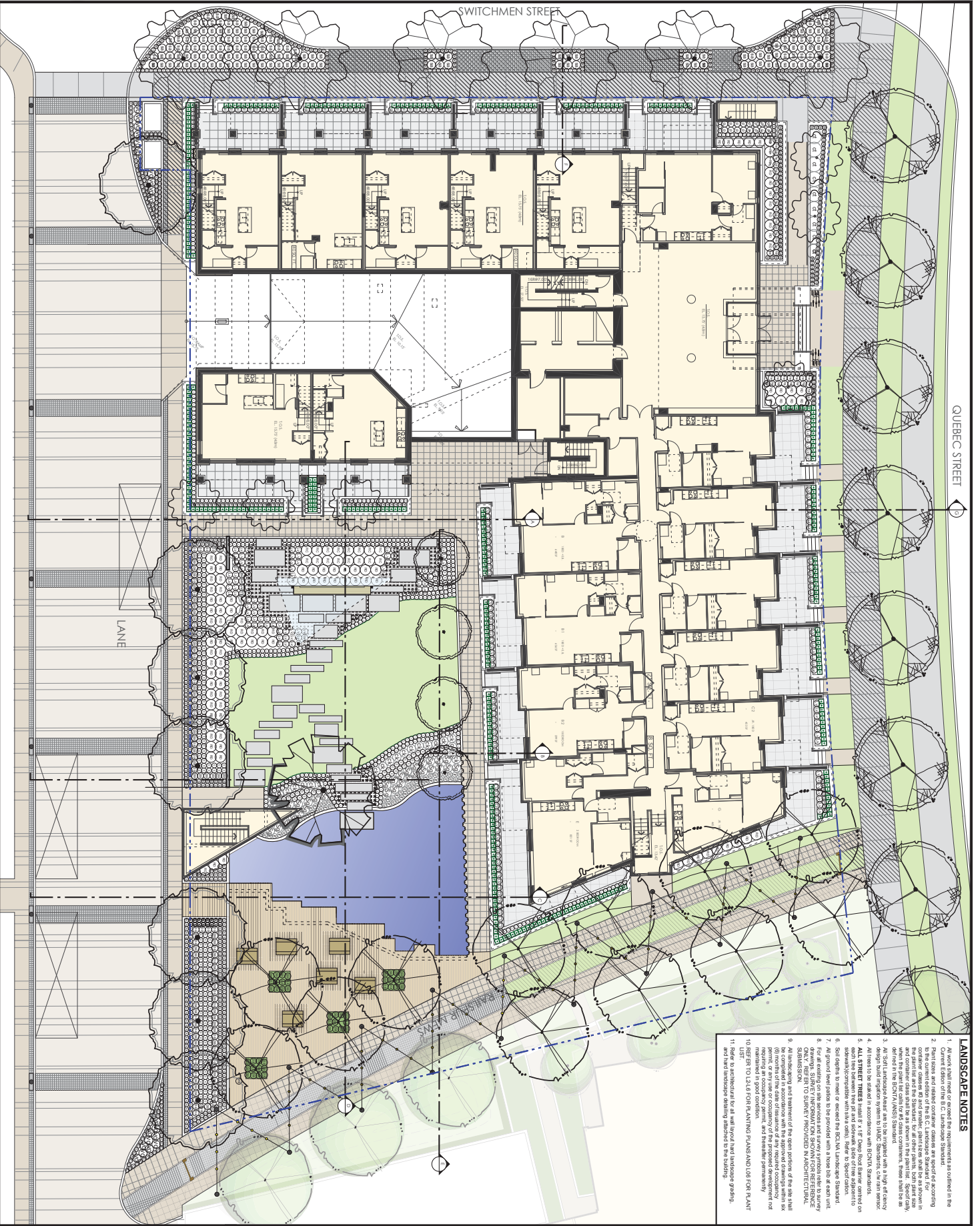
RALSPUR MEWS

- Connecting Quebec Street with the central laneway and delivering to the open courtyard, the Ralspur Mews is a critical reference to an historic courtyard. This is provided to offer a public right of way and intricate connector through to winter months.
- Large planted open onto outdoor Mews.
- Concrete provides privacy for the private parking and views out to the street.
- Red brick concrete and in-fill with the sidewalk, with down in-between.
- Concrete slabs will also be used on bonding across the courtyard.
- Custom Helicon Light Standards line the space of light and provides intimate shadows during the day.



BUILDING 2 COURTYARD & RALSPUR PLAZA

- Outdoor Plaza is surfaced with wood decking and plant beds, grade depressed with trees. The plaza is a secondary outdoor space, connecting the courtyard and Ralspur Plaza. The plaza is designed to align with the pedestrian destination between the west end of Ralspur Mews and the east end of the pedestrian alley walkway.
- Balcony 2 encloses the courtyard on one side, with Ralspur Mews and the lane projecting of the opposite corner.
- Balcony 1 encloses the courtyard on the other side.
- A large stone concrete central courtyard courtyard.
- Wood decking finished with picnic tables, large ornamental provide trees and planting overlook the pond to create a central public gathering area.
- Wood slat wall behind the one end of the pond project of which will be used on a concrete wall.
- Concrete slabs will also be used on bonding across the courtyard.
- Custom Helicon Light Standards line the space of light and provides intimate shadows during the day.
- A solid glass that pop up is designed on organic element that promotes the plaza and reflects in the pond.



QUEBEC STREET

LANE

- LANDSCAPE NOTES**
1. All work shall meet or exceed the requirements as outlined in the current edition of the C.L. Standards Standard.
 2. Planting shall be done in accordance with the requirements of the current edition of the C.L. Landscape Standard for outdoor culture and planting. Planting shall be as shown in and consistent with the site plan. The plant list, specifically, defined in the SCHEDULE 1, shall be used.
 3. All S&T Landscaping Area, due to be completed with a high quality organic soil and organic topsoil. Standard care and attention shall be given to the planting and maintenance of the site.
 4. All S&T TREES shall be installed in the same manner as shown on each tree between the pit and sidewalk slope of the adjacent sidewalk, or as shown in the SCHEDULE 1, shall be used.
 5. All ground level grades to be provided with a slope that is suitable for drainage and safety.
 6. For all existing on-site services and surveys symbols refer to survey drawings. SCHEDULE 1, shall be used for all symbols.
 7. All symbols and quantities of the proposed development shall be maintained in good condition.
 8. All symbols and quantities of the proposed development shall be maintained in good condition.
 9. All landscaping and treatment of the site shall be as shown in and consistent with the site plan. The plant list, specifically, defined in the SCHEDULE 1, shall be used.
 10. REFER TO L2-L6 FOR PLANTING PLANS AND L8 FOR PLANT LIST AND SCHEDULE 1, shall be used.
 11. Refer to attachments for all well head and landscape grading.

No.	Date	Revised	By
1	10/20/2014	Initial	JK



DURANTE BREUK LANDSCAPE ARCHITECTS
 1000 ...
 ...

RICHARD HENRY
 ARCHITECT INC.
 RAPI ARCHITECTS INC.
 TEL: 604-688-7322
 601-633-3522
 777-4411
 777-4411
 5017 E. ONE
 VANCOUVER, BC
 V6Z 2R8 CANADA

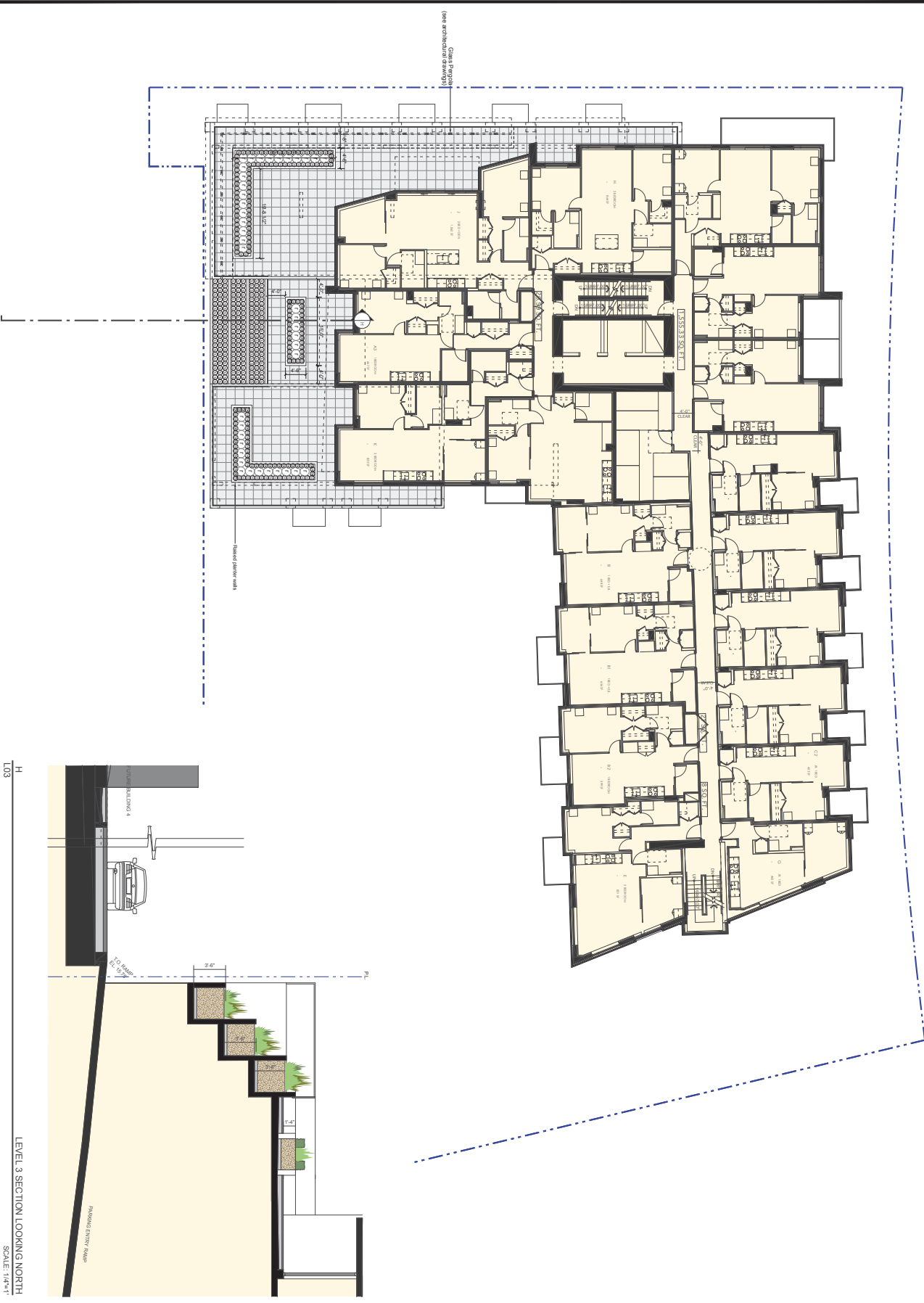
CONCERT

QUEBEC & 1st
 BUILDING 2

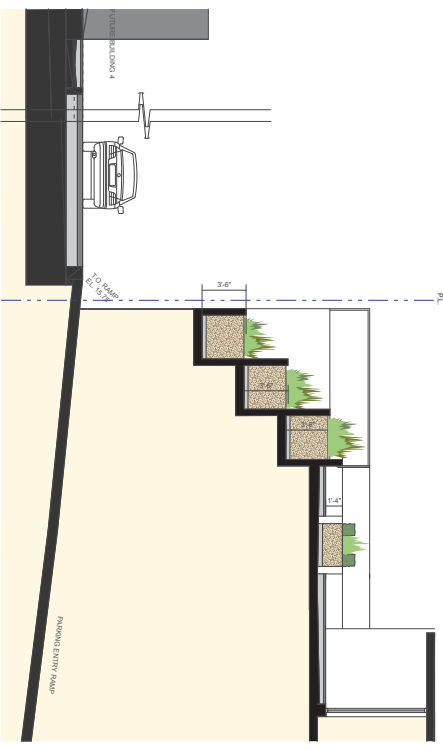
LEVEL 1 LANDSCAPE PLAN

DATE: OCT 28/2014
 DRAWN BY: JK
 CHECKED BY: JK
 SCALE: AS SHOWN

L-2



LEGEND
 24' Concrete River Stone



LEVEL 3 SECTION LOOKING NORTH
 SCALE: 1/4"=1'

CONCEPT
 1. CONCEPT
 2. CONCEPT
 3. CONCEPT
 4. CONCEPT
 5. CONCEPT
 6. CONCEPT
 7. CONCEPT
 8. CONCEPT
 9. CONCEPT
 10. CONCEPT
 11. CONCEPT
 12. CONCEPT
 13. CONCEPT
 14. CONCEPT
 15. CONCEPT
 16. CONCEPT
 17. CONCEPT
 18. CONCEPT
 19. CONCEPT
 20. CONCEPT
 21. CONCEPT
 22. CONCEPT
 23. CONCEPT
 24. CONCEPT
 25. CONCEPT
 26. CONCEPT
 27. CONCEPT
 28. CONCEPT
 29. CONCEPT
 30. CONCEPT
 31. CONCEPT
 32. CONCEPT
 33. CONCEPT
 34. CONCEPT
 35. CONCEPT
 36. CONCEPT
 37. CONCEPT
 38. CONCEPT
 39. CONCEPT
 40. CONCEPT
 41. CONCEPT
 42. CONCEPT
 43. CONCEPT
 44. CONCEPT
 45. CONCEPT
 46. CONCEPT
 47. CONCEPT
 48. CONCEPT
 49. CONCEPT
 50. CONCEPT
 51. CONCEPT
 52. CONCEPT
 53. CONCEPT
 54. CONCEPT
 55. CONCEPT
 56. CONCEPT
 57. CONCEPT
 58. CONCEPT
 59. CONCEPT
 60. CONCEPT
 61. CONCEPT
 62. CONCEPT
 63. CONCEPT
 64. CONCEPT
 65. CONCEPT
 66. CONCEPT
 67. CONCEPT
 68. CONCEPT
 69. CONCEPT
 70. CONCEPT
 71. CONCEPT
 72. CONCEPT
 73. CONCEPT
 74. CONCEPT
 75. CONCEPT
 76. CONCEPT
 77. CONCEPT
 78. CONCEPT
 79. CONCEPT
 80. CONCEPT
 81. CONCEPT
 82. CONCEPT
 83. CONCEPT
 84. CONCEPT
 85. CONCEPT
 86. CONCEPT
 87. CONCEPT
 88. CONCEPT
 89. CONCEPT
 90. CONCEPT
 91. CONCEPT
 92. CONCEPT
 93. CONCEPT
 94. CONCEPT
 95. CONCEPT
 96. CONCEPT
 97. CONCEPT
 98. CONCEPT
 99. CONCEPT
 100. CONCEPT

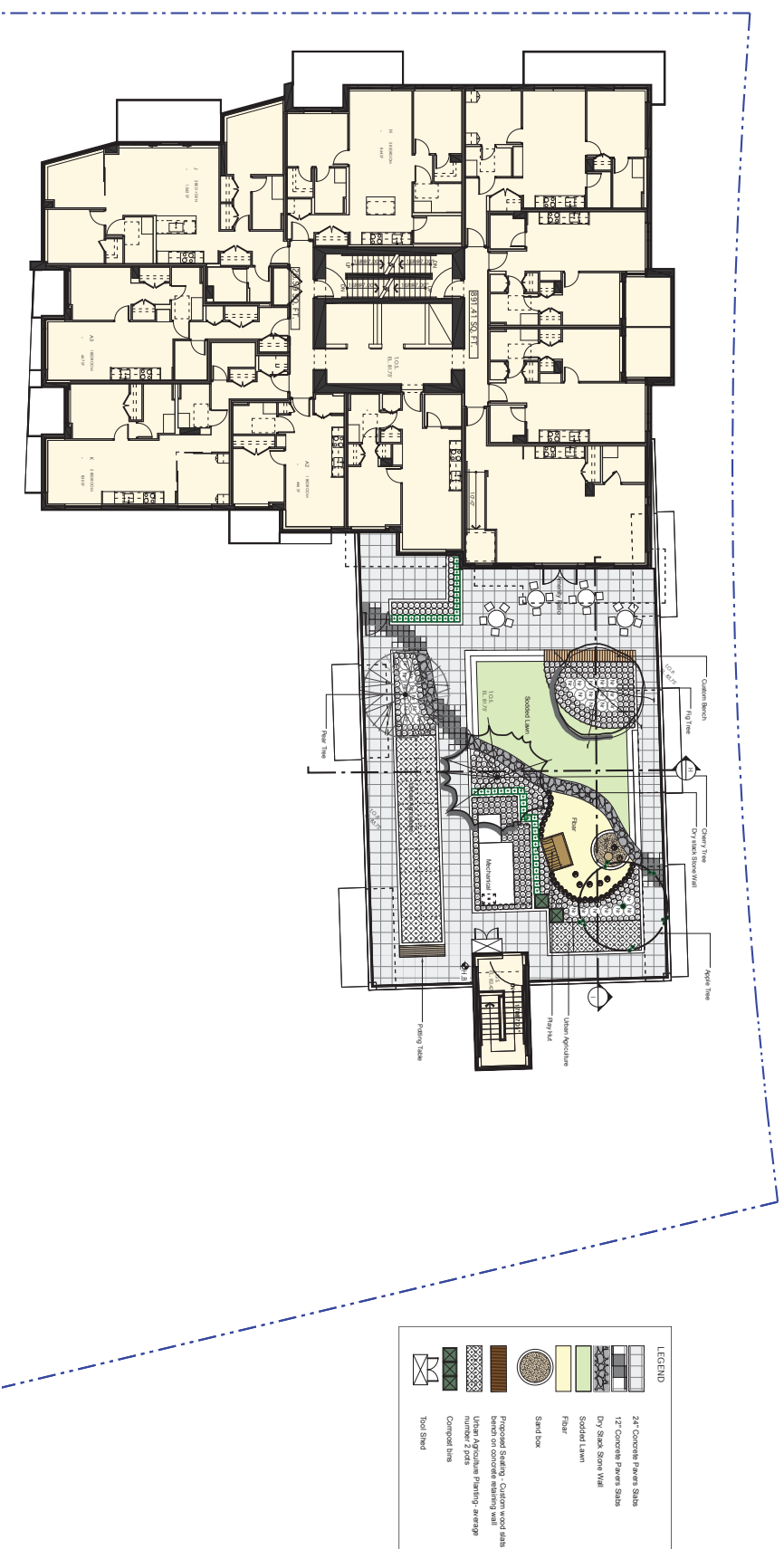
durante kreuk
 1000 West 10th Avenue, Suite 100
 Vancouver, BC V6H 3G9
 Tel: 604.681.1111
 Fax: 604.681.1112
 Email: info@durantekreuk.com
 Website: www.durantekreuk.com

RICHARD HENRY ARCHITECT INC.
 501-1111
 601-653-3872
 7000-1111
 311-4111
 501-1111
 VANCOUVER BC
 V2T 2B9 CANADA

RAPILARCHITECTS INC.
 604-659-7822
 601-653-3872
 7000-1111
 311-4111
 501-1111
 VANCOUVER BC
 V2T 2B9 CANADA

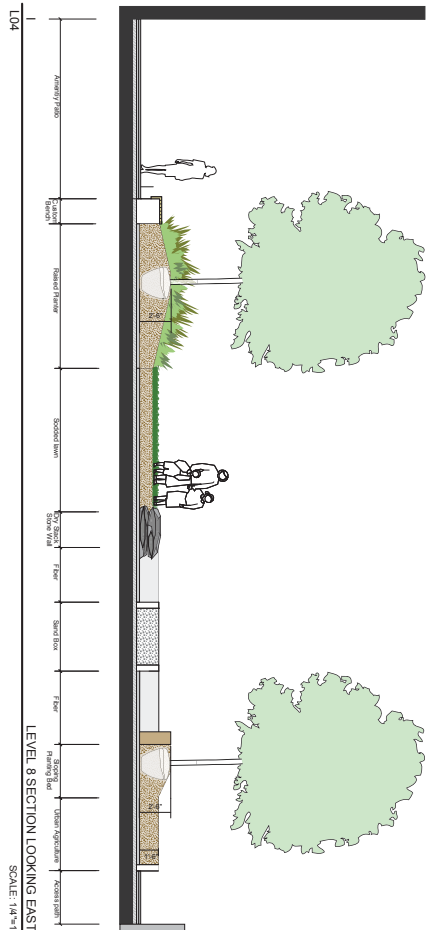
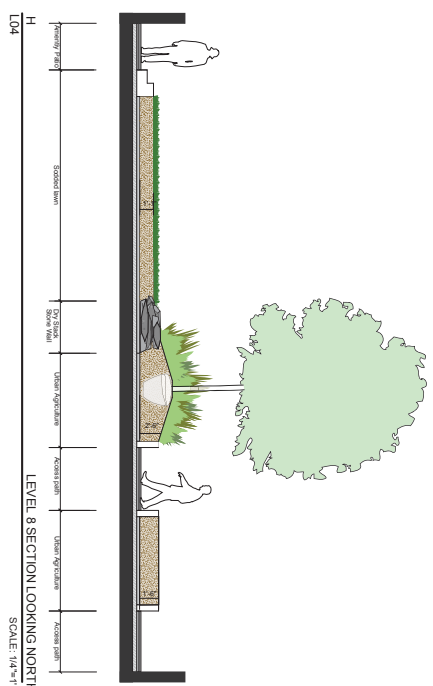
CONCERT
 1000 West 10th Avenue, Suite 100
 Vancouver, BC V6H 3G9
 Tel: 604.681.1111
 Fax: 604.681.1112
 Email: info@concert.com
 Website: www.concert.com

QUEBEC & 1st BUILDING 2
 LEVEL 3 LANDSCAPE PLAN
 Drawing Title
 Date: OCTOBER 2014
 Revision: 1/2017
 Scale: 1/4"=1'
 Drawing No: L-3



LEGEND

	24" Concrete Paves Slabs
	12" Concrete Paves Slabs
	Dry Stack Stone Wall
	Sodded Lawn
	Filter
	Sand Box
	Proposed Seating - Custom wood table benches on concrete retaining wall
	User Agriculture Paving - average number of pads
	Composite bins
	Tool Shed



No.	Date	Detail	By
1	10/10/14	SECTION 01-00	JK
2	10/10/14	SECTION 01-00	JK
3	10/10/14	SECTION 01-00	JK
4	10/10/14	SECTION 01-00	JK
5	10/10/14	SECTION 01-00	JK
6	10/10/14	SECTION 01-00	JK
7	10/10/14	SECTION 01-00	JK
8	10/10/14	SECTION 01-00	JK
9	10/10/14	SECTION 01-00	JK
10	10/10/14	SECTION 01-00	JK
11	10/10/14	SECTION 01-00	JK
12	10/10/14	SECTION 01-00	JK
13	10/10/14	SECTION 01-00	JK
14	10/10/14	SECTION 01-00	JK
15	10/10/14	SECTION 01-00	JK
16	10/10/14	SECTION 01-00	JK
17	10/10/14	SECTION 01-00	JK
18	10/10/14	SECTION 01-00	JK
19	10/10/14	SECTION 01-00	JK
20	10/10/14	SECTION 01-00	JK



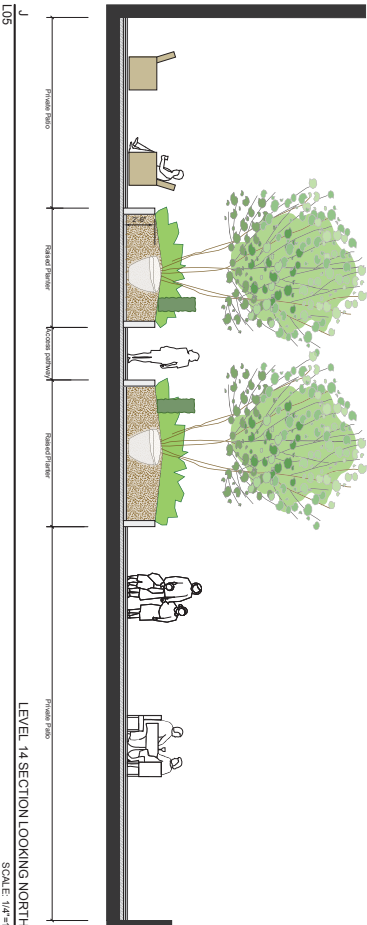
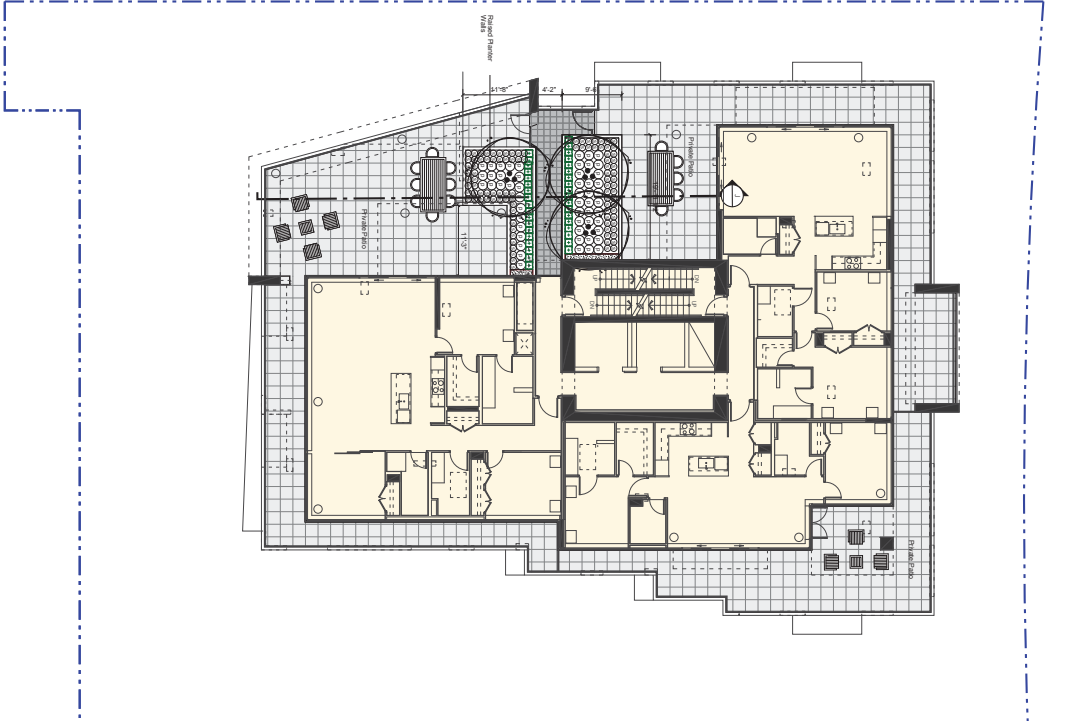
RICHARD HENRY
ARCHITECT INC.

RAPIARCHITECTS INC.
R.A. Poirier
501-858-3833
601-653-3822
7-5446
7-5446
3-11111111-1111
3-11111111-1111
501-858-3833
501-858-3833
501-858-3833
501-858-3833

CONCERT

QUEBEC & 1st
BUILDING 2
LEVEL 8 LANDSCAPE PLAN
AND SECTIONS

DATE	10/10/14	PROJECT	CONCERT INC.
SCALE	1/4"=1'	DRAWING NO.	L-4
DATE	10/10/14	PROJECT	CONCERT INC.
SCALE	1/4"=1'	DRAWING NO.	L-4



LEGEND

- 24\" Concrete Pavers Slabs
- 12\" Pavers Concrete Pavers Standard
- Proposed Multi-stem Trees 2.5m high minimum

LEVEL 14 SECTION LOOKING NORTH
SCALE: 1/4\"=1'-0\"

CONCERT
 QUEBEC & 1st
 BUILDING 2
 AND SECTION

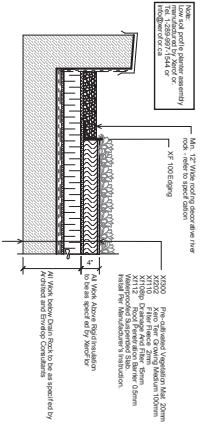
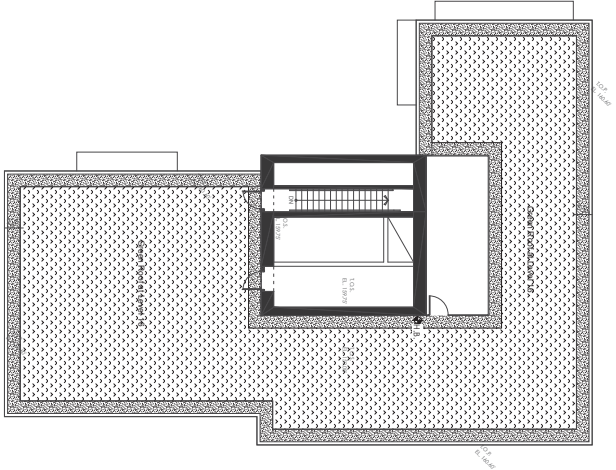
DATE	DESCRIPTION
OCT 2014	1:3077
REV 1	1:3077
REV 2	1:3077
REV 3	1:3077
REV 4	1:3077
REV 5	1:3077
REV 6	1:3077
REV 7	1:3077
REV 8	1:3077
REV 9	1:3077
REV 10	1:3077
REV 11	1:3077
REV 12	1:3077
REV 13	1:3077
REV 14	1:3077
REV 15	1:3077
REV 16	1:3077
REV 17	1:3077
REV 18	1:3077
REV 19	1:3077
REV 20	1:3077
REV 21	1:3077
REV 22	1:3077
REV 23	1:3077
REV 24	1:3077
REV 25	1:3077
REV 26	1:3077
REV 27	1:3077
REV 28	1:3077
REV 29	1:3077
REV 30	1:3077
REV 31	1:3077
REV 32	1:3077
REV 33	1:3077
REV 34	1:3077
REV 35	1:3077
REV 36	1:3077
REV 37	1:3077
REV 38	1:3077
REV 39	1:3077
REV 40	1:3077
REV 41	1:3077
REV 42	1:3077
REV 43	1:3077
REV 44	1:3077
REV 45	1:3077
REV 46	1:3077
REV 47	1:3077
REV 48	1:3077
REV 49	1:3077
REV 50	1:3077
REV 51	1:3077
REV 52	1:3077
REV 53	1:3077
REV 54	1:3077
REV 55	1:3077
REV 56	1:3077
REV 57	1:3077
REV 58	1:3077
REV 59	1:3077
REV 60	1:3077
REV 61	1:3077
REV 62	1:3077
REV 63	1:3077
REV 64	1:3077
REV 65	1:3077
REV 66	1:3077
REV 67	1:3077
REV 68	1:3077
REV 69	1:3077
REV 70	1:3077
REV 71	1:3077
REV 72	1:3077
REV 73	1:3077
REV 74	1:3077
REV 75	1:3077
REV 76	1:3077
REV 77	1:3077
REV 78	1:3077
REV 79	1:3077
REV 80	1:3077
REV 81	1:3077
REV 82	1:3077
REV 83	1:3077
REV 84	1:3077
REV 85	1:3077
REV 86	1:3077
REV 87	1:3077
REV 88	1:3077
REV 89	1:3077
REV 90	1:3077
REV 91	1:3077
REV 92	1:3077
REV 93	1:3077
REV 94	1:3077
REV 95	1:3077
REV 96	1:3077
REV 97	1:3077
REV 98	1:3077
REV 99	1:3077
REV 100	1:3077

durante kreuk
 DURANTE KREUK LTD. LANDSCAPE ARCHITECTS
 102 - 102 New Street, Vancouver, B.C. V6J 1K6
 P: 604.681.1111 F: 604.681.1112 E: info@durantekreuk.com

RICHARD HENRY ARCHITECT INC.
 RAPIER ARCHITECTS INC.
 604.681.3822
 7000 - 15th Ave S.E.
 Suite 208
 Vancouver, B.C.
 V6Z 1S9 CANADA

North

No.	Date	Detail	By
1	02/20/14	1:3077-01	DK
2			
3			
4			
5			
6			
7			
8			
9			
10			
11			
12			
13			
14			
15			
16			
17			
18			
19			
20			
21			
22			
23			
24			
25			
26			
27			
28			
29			
30			
31			
32			
33			
34			
35			
36			
37			
38			
39			
40			
41			
42			
43			
44			
45			
46			
47			
48			
49			
50			
51			
52			
53			
54			
55			
56			
57			
58			
59			
60			
61			
62			
63			
64			
65			
66			
67			
68			
69			
70			
71			
72			
73			
74			
75			
76			
77			
78			
79			
80			
81			
82			
83			
84			
85			
86			
87			
88			
89			
90			
91			
92			
93			
94			
95			
96			
97			
98			
99			
100			



XeroFlor (XF 300) Pre-Vegetated Low Soil Planter on Slab
SCALE: 1"=1'

LEGEND

XeroFlor (XF 300) Pre-Vegetated Low Soil Planter on Slab

SYMBOL	SYMBOL NAME	COMMON NAME	HT	COMMENTS
1	Acer platanoides 'Emerald Queen'	Norway Maple	3'-0"	B&S Specimen
2	Prunus pennsylvanica	Black Cherry	6'-Height	B&S Specimen
3	Prunus pennsylvanica 'Chantrelle'	Cherry Plum	3'-0"	B&S Specimen
4	Prunus pennsylvanica	Japanese Strawberry	2'-0"	B&S Specimen
5	Prunus pennsylvanica	Prunus pennsylvanica	6'-Height	B&S Specimen
6	Prunus pennsylvanica	Prunus pennsylvanica	6'-Height	B&S Specimen
7	Prunus pennsylvanica	Prunus pennsylvanica	6'-Height	B&S Specimen
8	Prunus pennsylvanica	Prunus pennsylvanica	6'-Height	B&S Specimen

SYMBOL	SYMBOL NAME	COMMON NAME	HT	COMMENTS
1	Prunus pennsylvanica	Prunus pennsylvanica	6'-Height	B&S Specimen
2	Prunus pennsylvanica	Prunus pennsylvanica	6'-Height	B&S Specimen
3	Prunus pennsylvanica	Prunus pennsylvanica	6'-Height	B&S Specimen
4	Prunus pennsylvanica	Prunus pennsylvanica	6'-Height	B&S Specimen
5	Prunus pennsylvanica	Prunus pennsylvanica	6'-Height	B&S Specimen
6	Prunus pennsylvanica	Prunus pennsylvanica	6'-Height	B&S Specimen
7	Prunus pennsylvanica	Prunus pennsylvanica	6'-Height	B&S Specimen
8	Prunus pennsylvanica	Prunus pennsylvanica	6'-Height	B&S Specimen

SYMBOL	SYMBOL NAME	COMMON NAME	HT	COMMENTS
1	Prunus pennsylvanica	Prunus pennsylvanica	6'-Height	B&S Specimen
2	Prunus pennsylvanica	Prunus pennsylvanica	6'-Height	B&S Specimen
3	Prunus pennsylvanica	Prunus pennsylvanica	6'-Height	B&S Specimen
4	Prunus pennsylvanica	Prunus pennsylvanica	6'-Height	B&S Specimen
5	Prunus pennsylvanica	Prunus pennsylvanica	6'-Height	B&S Specimen
6	Prunus pennsylvanica	Prunus pennsylvanica	6'-Height	B&S Specimen
7	Prunus pennsylvanica	Prunus pennsylvanica	6'-Height	B&S Specimen
8	Prunus pennsylvanica	Prunus pennsylvanica	6'-Height	B&S Specimen

SYMBOL	SYMBOL NAME	COMMON NAME	HT	COMMENTS
1	Prunus pennsylvanica	Prunus pennsylvanica	6'-Height	B&S Specimen
2	Prunus pennsylvanica	Prunus pennsylvanica	6'-Height	B&S Specimen
3	Prunus pennsylvanica	Prunus pennsylvanica	6'-Height	B&S Specimen
4	Prunus pennsylvanica	Prunus pennsylvanica	6'-Height	B&S Specimen
5	Prunus pennsylvanica	Prunus pennsylvanica	6'-Height	B&S Specimen
6	Prunus pennsylvanica	Prunus pennsylvanica	6'-Height	B&S Specimen
7	Prunus pennsylvanica	Prunus pennsylvanica	6'-Height	B&S Specimen
8	Prunus pennsylvanica	Prunus pennsylvanica	6'-Height	B&S Specimen

DURAMITEK INC., LANDSCAPE ARCHITECTS
100-127 Ave. Du Vallon, Vancouver, B.C., V6L 2G6
Tel: 604.271.1144 Fax: 604.271.1145
www.duramitek.com

RICHARD HENRY ARCHITECT INC.
501-450 West Broadway
V6C 2M8
Tel: 604.681.5322 Fax: 604.681.5322
www.rharchitect.com

CONCERT

1000-1100 West Broadway
V6C 2M8
Tel: 604.681.5322 Fax: 604.681.5322
www.concert.com

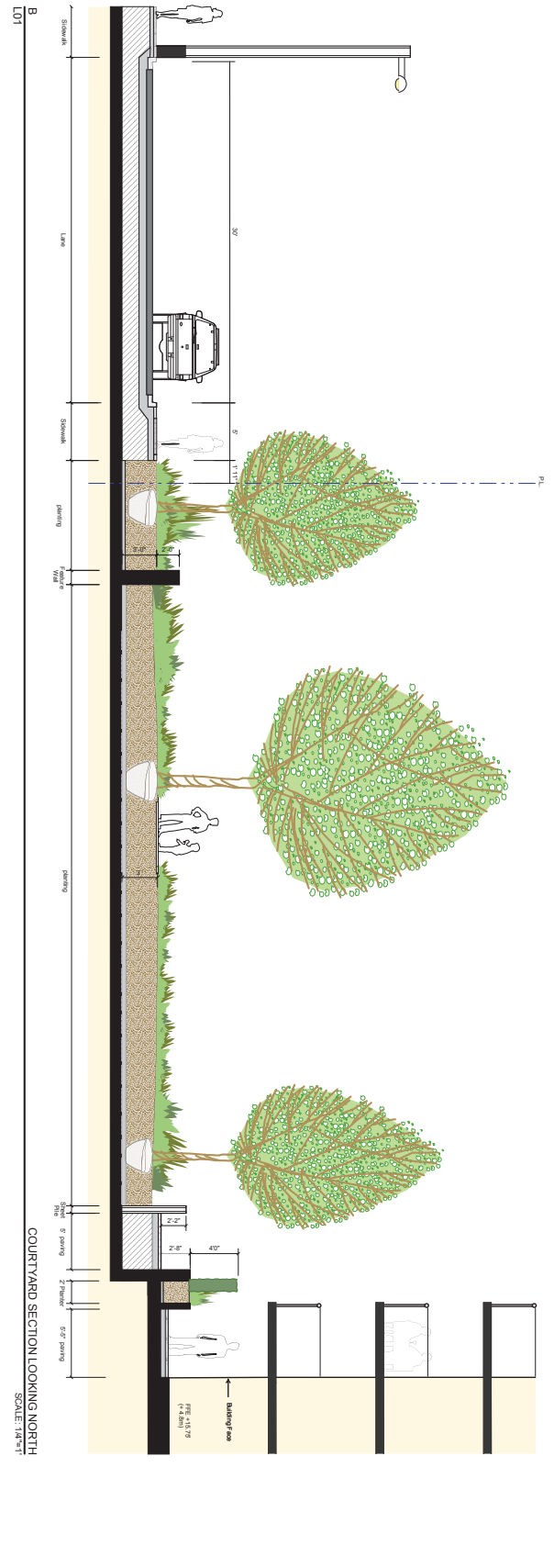
GREEN ROOF PLAN AND PLANTING LIST

DATE: OCT 28th 2014
DRAWN BY: [Name]
CHECKED BY: [Name]

QUBBEC & 1st BUILDING 2

SCALE: 1"=1'

L-6



Copyright/Reference:
 This drawing is the property of the architect and is not to be reproduced, stored in a retrieval system, or transmitted in any form or by any means, electronic, mechanical, photocopying, recording, or by any information storage and retrieval system, without the prior written consent of the architect.

NO.	DATE	DESCRIPTION	BY
1		ISSUED FOR PERMITTING	RHC
2		ISSUED FOR PERMITTING	RHC
3		ISSUED FOR PERMITTING	RHC
4		ISSUED FOR PERMITTING	RHC
5		ISSUED FOR PERMITTING	RHC
6		ISSUED FOR PERMITTING	RHC
7		ISSUED FOR PERMITTING	RHC
8		ISSUED FOR PERMITTING	RHC
9		ISSUED FOR PERMITTING	RHC
10		ISSUED FOR PERMITTING	RHC



DURAMTEK DESIGN LTD. LANDSCAPE ARCHITECTS
 101-1100 New Brunswick Avenue, Suite 101, St. John's, NL A1B 1A2
 Tel: (709) 572-1111 Fax: (709) 572-1112
 www.duramtek.ca

RICHARD HENRY ARCHITECT INC.
 500-1100 St. John's Street, St. John's, NL A1B 1A2
 Tel: (709) 572-1111 Fax: (709) 572-1112
 www.rharc.com

RAPILARCHITECTS INC.
 500-1100 St. John's Street, St. John's, NL A1B 1A2
 Tel: (709) 572-1111 Fax: (709) 572-1112
 www.rapilarchitects.com

CONCERT
 500-1100 St. John's Street, St. John's, NL A1B 1A2
 Tel: (709) 572-1111 Fax: (709) 572-1112
 www.concert.com

QUEBEC & 1st BUILDING 2
 500-1100 St. John's Street, St. John's, NL A1B 1A2
 Tel: (709) 572-1111 Fax: (709) 572-1112
 www.quebecand1st.com

LANDSCAPE SECTIONS
 500-1100 St. John's Street, St. John's, NL A1B 1A2
 Tel: (709) 572-1111 Fax: (709) 572-1112
 www.landscape.com

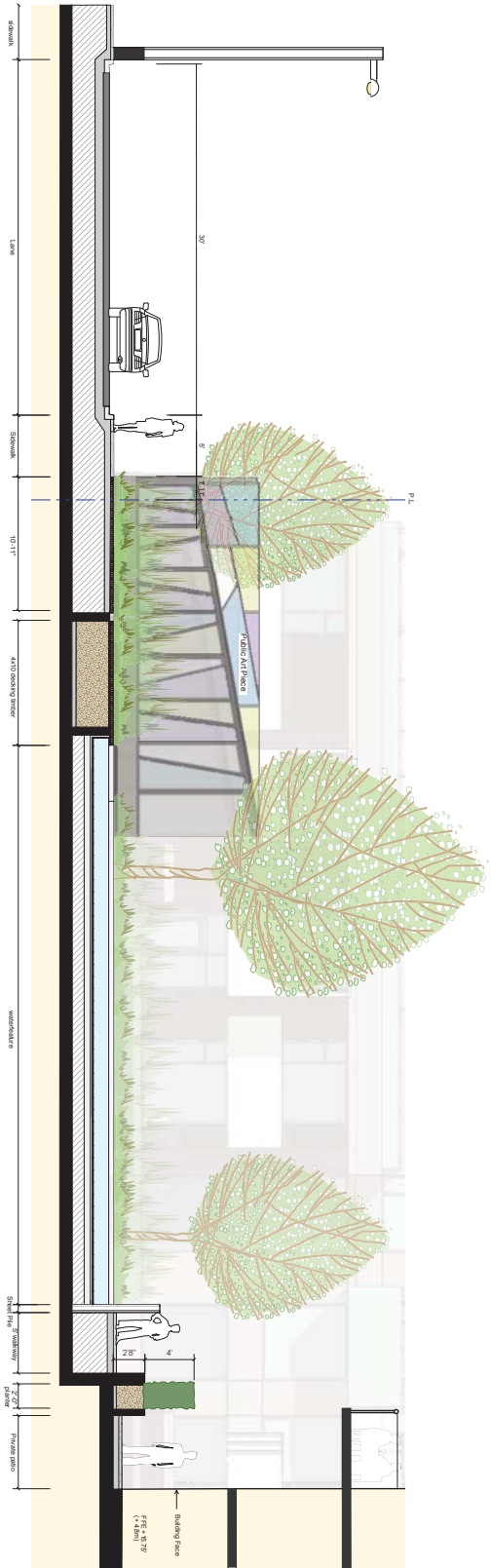
REVISIONS

NO.	DATE	DESCRIPTION	BY
1		ISSUED FOR PERMITTING	RHC
2		ISSUED FOR PERMITTING	RHC
3		ISSUED FOR PERMITTING	RHC
4		ISSUED FOR PERMITTING	RHC
5		ISSUED FOR PERMITTING	RHC
6		ISSUED FOR PERMITTING	RHC
7		ISSUED FOR PERMITTING	RHC
8		ISSUED FOR PERMITTING	RHC
9		ISSUED FOR PERMITTING	RHC
10		ISSUED FOR PERMITTING	RHC

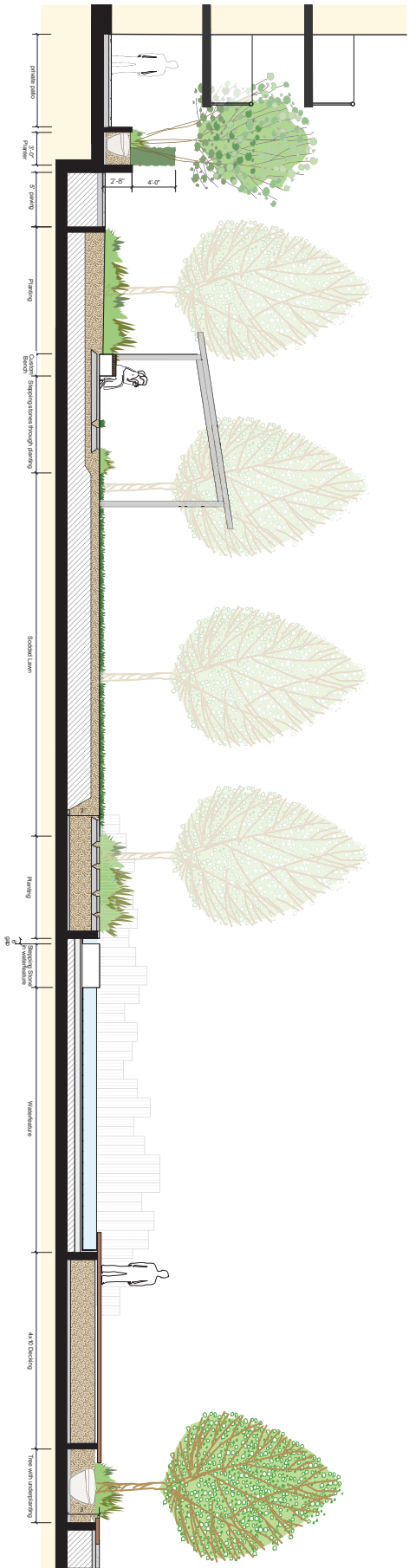
DATE: OCTOBER 2014
SCALE: 1/4"=1'-0"
PROJECT: QUEBEC & 1st BUILDING 2
NO.: L-7

DESIGNED BY: RHC
CHECKED BY: RHC
DATE: OCTOBER 2014
SCALE: 1/4"=1'-0"
PROJECT: QUEBEC & 1st BUILDING 2
NO.: L-7

DATE: OCTOBER 2014
SCALE: 1/4"=1'-0"
PROJECT: QUEBEC & 1st BUILDING 2
NO.: L-7



C
LO1
COURTYARD SECTION LOOKING NORTH
SCALE: 1/4"=1'



D
LO1
COURTYARD SECTION LOOKING EAST
SCALE: 1/4"=1'

CONTRACT INFORMATION

NO.	DATE	DESCRIPTION
1		
2		
3		
4		
5		
6		
7		
8		
9		
10		
11		
12		
13		
14		
15		
16		
17		
18		
19		
20		
21		
22		
23		
24		
25		
26		
27		
28		
29		
30		



DURAMITEK RUCK & ASSOCIATES
LANDSCAPE ARCHITECTS
100-100 Ave. Du Parc, Montreal, Quebec H3L 2H6
Tel: (514) 392-1111 | Fax: (514) 392-1112 | www.duramitekruk.com

RICHARD HENRY
ARCHITECT INC.

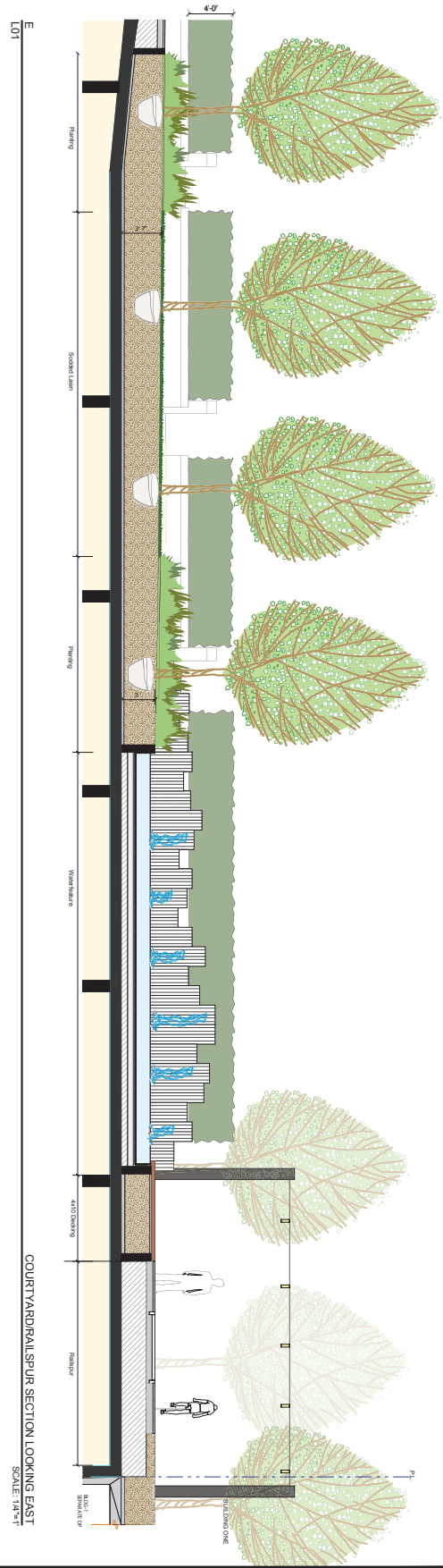
RAPHAEL ARCHITECTS INC.
TEL: 514 559 7822
601 653 3822
7500 St. Laurent
Montreal, QC H4T 1M5
SUITE 218
4900 Avenue
Vancouver, BC
V6Z 2T8 CANADA

CONCERT

QUEBEC & 1st
BUILDING 2

LANDSCAPE SECTIONS

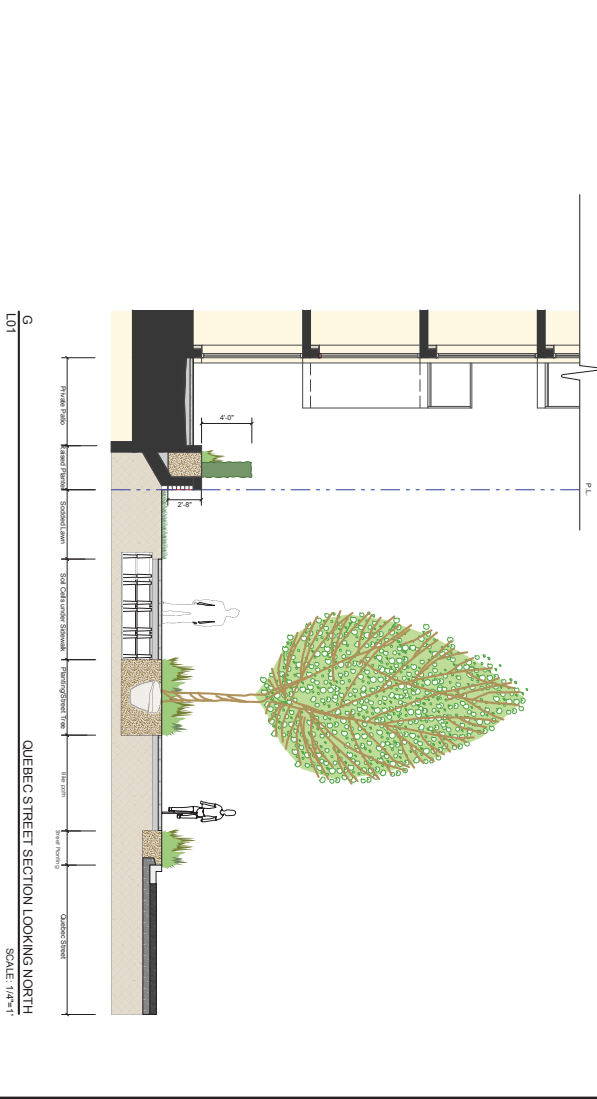
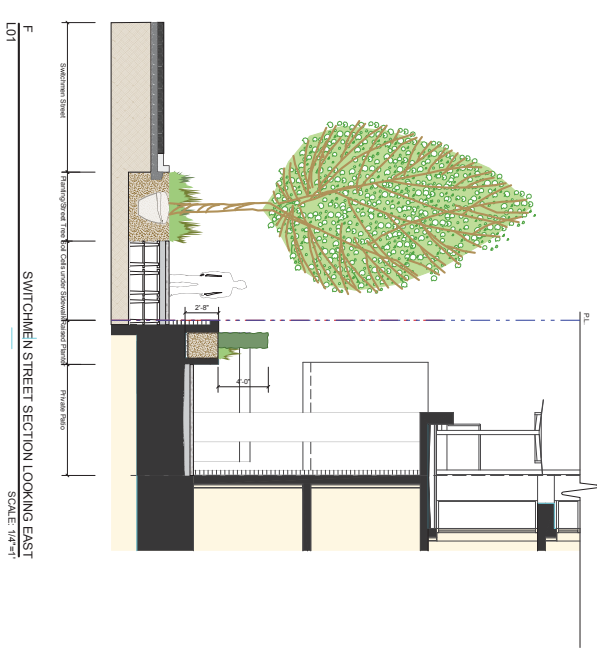
DATE	PROJECT
OCTOBER 2014	13777
CLIENT	CONCERT
SCALE	1/8"=1'
NO.	L-8



2. The Client shall provide the following information to the Architect:

No.	Date	Revised	By
1			
2			
3			
4			
5			
6			
7			
8			
9			
10			

DATE: OCT 28/10 2014
 DRAWN BY: J. BROWN
 CHECKED BY: J. BROWN
 SCALE: 1/4\"/>



DATE: OCT 28/10 2014
 DRAWN BY: J. BROWN
 CHECKED BY: J. BROWN
 SCALE: 1/4\"/>

CONCERT

QUEBEC & 1st BUILDING 2

LANDSCAPE SECTIONS

RATIA ARCHITECTS INC.

501-659-7833
 604-428-8822
 7500 St. Hubert St.
 Montreal, QC
 H3T 2E4

RICHARD HENRY ARCHITECT INC.

501-659-7833
 604-428-8822
 7500 St. Hubert St.
 Montreal, QC
 H3T 2E4

durantekreuk

SHARPE DESIGN LANDSCAPE ARCHITECTS
 1000 West Beaver Creek Road, Suite 100
 Richmond Hill, Ontario L4B 1N2