



**TABLE OF CONTENTS**

- PR01 CONTEXT PLAN AND PRECEDENT IMAGES
- PR02 ANALYSIS
- PR03 MASTER PLAN - ARBUTUS MEWS
- PR04 DETAIL PLAN - PUBLIC SQUARE
- PR05 DETAIL PLAN - ARBUTUS STREET
- PR06 DETAIL PLAN - YEW STREET
- PR07 DETAIL PLAN - NORTH LANE
- PR08 DETAIL PLAN - NANTON STREET
- PR09 EVENT OPTIONS
- PR10 EVENT OPTIONS
- PR11 EVENT OPTIONS



●



●



●



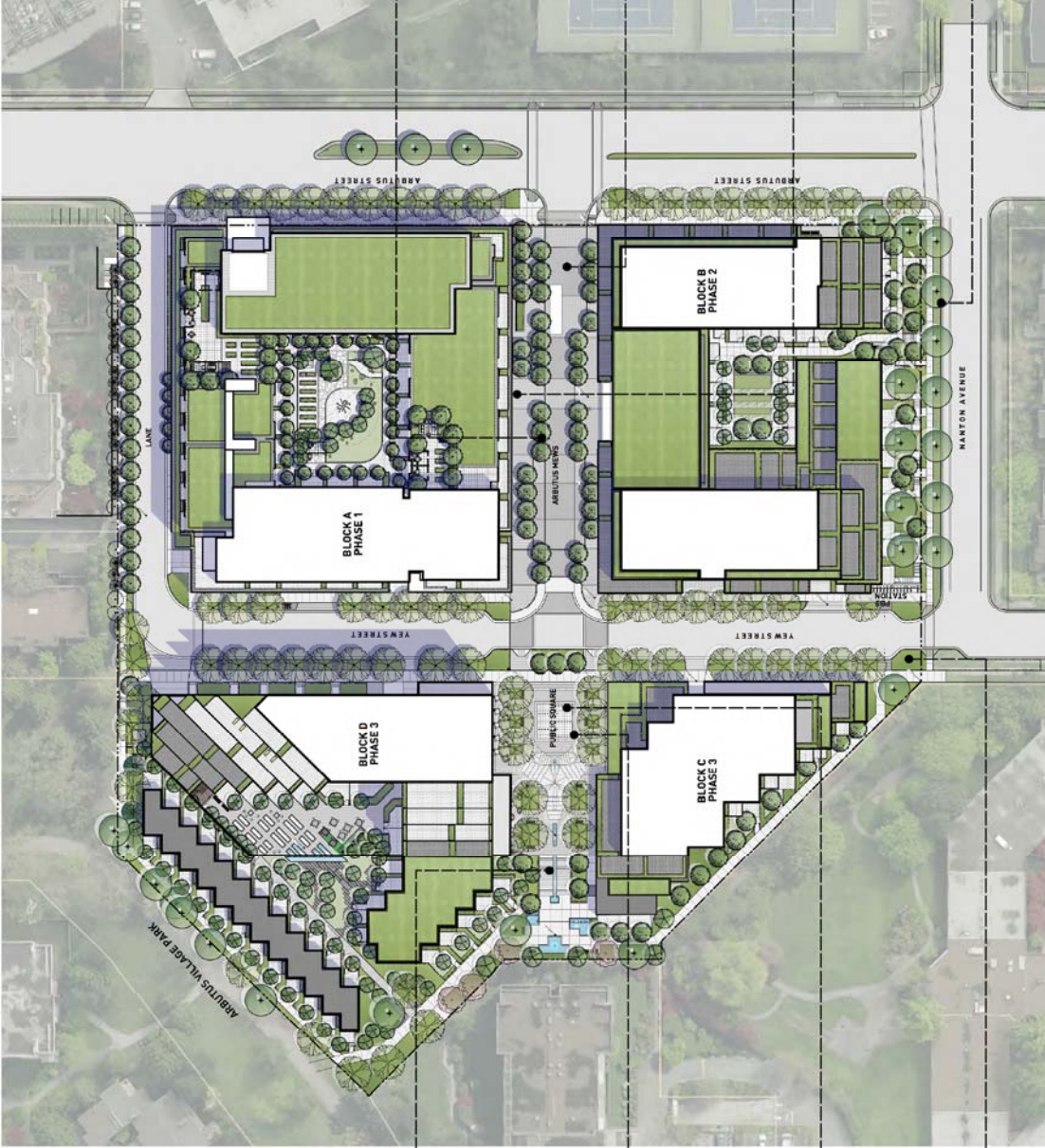
REVISIONS/ISSUES:  
 15 01/2015 Issue for City Planning  
 16 02/2015 Issue for Documentation Project



**PUBLIC REALM PLAN KEY POINTS**

**General:**

1. Green edges and internal tree plantings soften the site and reinforce the surrounding gardenesque quality of the neighbourhood.
2. The Mezz terminates in a public square providing a strong connection between the new community and the surrounding neighbourhood and park.
3. Streetscapes are well-defined through a more formal landscape character.



REVISED/ISSUES:  
 1. 01/2014: Update to 2014 Budget  
 2. 02/2014: Update to 2014 Budget  
 3. 03/2014: Update to 2014 Budget



REVISED/ISSUES:  
 1. 01/2014: Update to 2014 Budget  
 2. 02/2014: Update to 2014 Budget  
 3. 03/2014: Update to 2014 Budget









**PUBLIC REALM PLAN KEY POINTS**

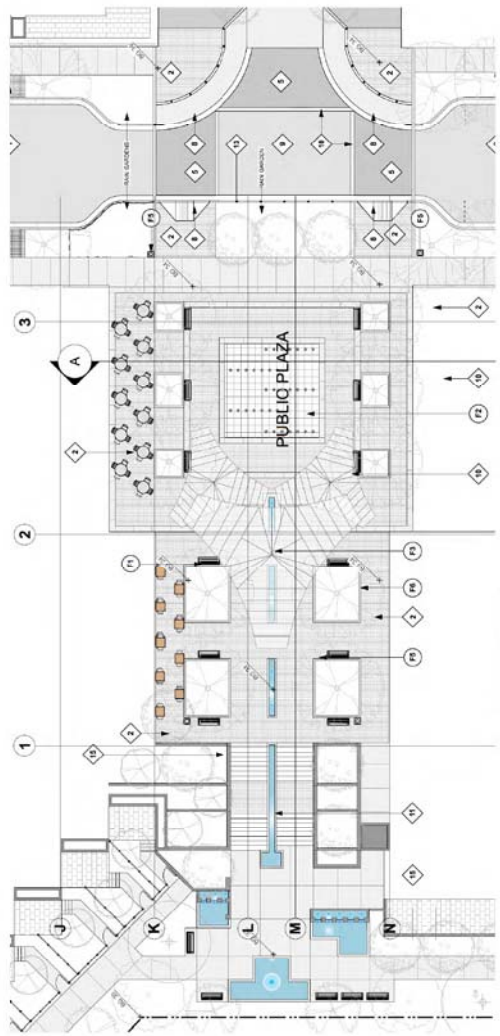
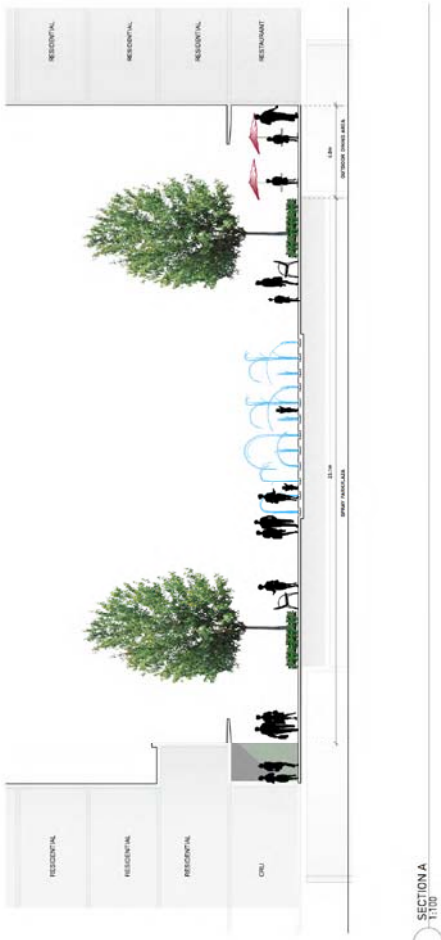
**Public Square:**

1. A community gathering place with animated edges including retail, restaurant, community recreation center and residential lobbies.
2. A feature water element, is included that can be turned off for larger gathering or on public market days.
3. Restaurant and cafe spill out into square.
4. The Square aligns with Mews and leads the public to neighbouring residential areas and Arbutus Village Park.
5. Covered seating structures offer places to sit under cover and out of elements.
6. A variety of other seating opportunities are created in the sun and /or shade.
7. The Square will include a significant public art component, featuring the glass canopies.
8. The water feature can be central turned off. The square is flexible for other activities

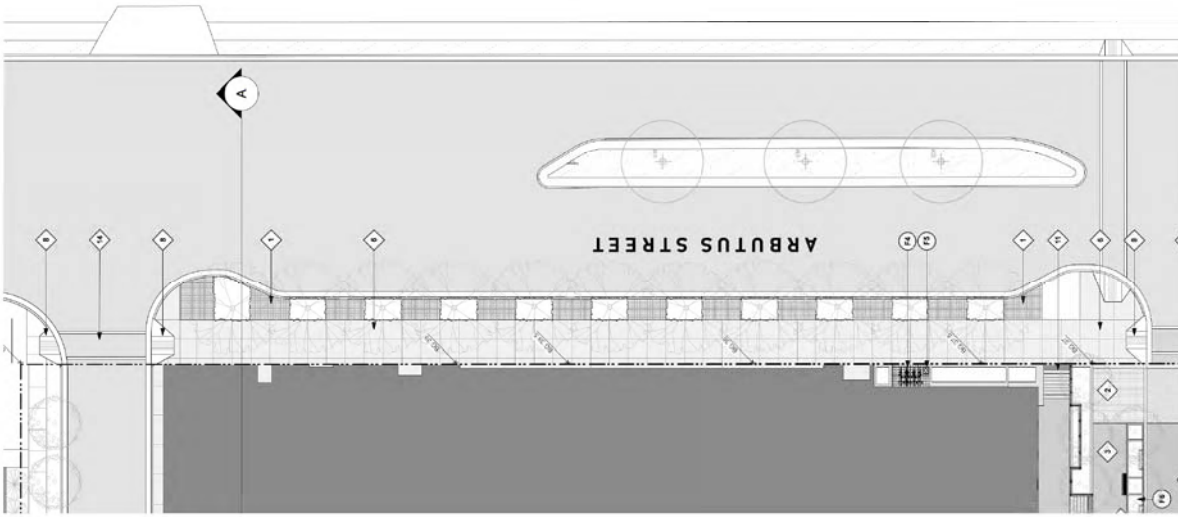
SITE MATERIALS	
◆	GRANITE SETTS PATTERN: SLAB, BOND SUPPLIER: PLACE FISH
◆	CONCRETE UNIT PAVEMENT LIGHT DUTY TYPE SIZE: 112 50MM X 222 50MM X 40MM PATTERN: TUNING FORK WITH SOLDIER SUPPLIER: ARBONIS FLOOR CONCRETE
◆	CONCRETE UNIT PAVEMENT HEAVY DUTY TYPE 1 SIZE: 112 50MM X 222 50MM X 40MM PATTERN: TUNING FORK WITH SOLDIER SUPPLIER: ARBONIS FLOOR CONCRETE
◆	CONCRETE UNIT PAVEMENT HEAVY DUTY TYPE 2 PATTERN: TUNING FORK WITH SOLDIER SUPPLIER: ARBONIS FLOOR CONCRETE
◆	CAST IN PLACE CONCRETE SIDEWALK ASPER CITY OF VANCOUVER STANDARD
◆	CAST IN PLACE CONCRETE CURB LETDOWN ASPER CITY OF VANCOUVER STANDARD
◆	ASPHALT, HEAVY DUTY ASPER CITY OF VANCOUVER STANDARD
◆	CAST IN PLACE INTERIOR COLOR CONCRETE BAND SUPPLIER: SOLIDWORK COLORS, INC.
◆	CAST IN PLACE CONCRETE STAR
◆	METAL RAILING
◆	METAL BOLLARD
◆	STANDARD CITY CROSSWALK
◆	CONCRETE RAMP - 5% MAX SLOPE

SITE FURNISHINGS	
○	BENCH PUBLIC REALM SUPPLIER: MAGNAN
○	WATER FEATURE SPILT PLAY AREA & FOUNTAIN
○	PUBLIC ART GLASS CANOPY STRUCTURES
○	BIKE RACKS SUPPLIER: LANDSCAPE FORMS
○	TREES SUPPLIER: LANDSCAPE FORMS
○	POSTING OF CONCRETE PLANTERS WITH 18 SQUARE METRE GLASS CANOPY SUPPLIER: LANDSCAPE FORMS

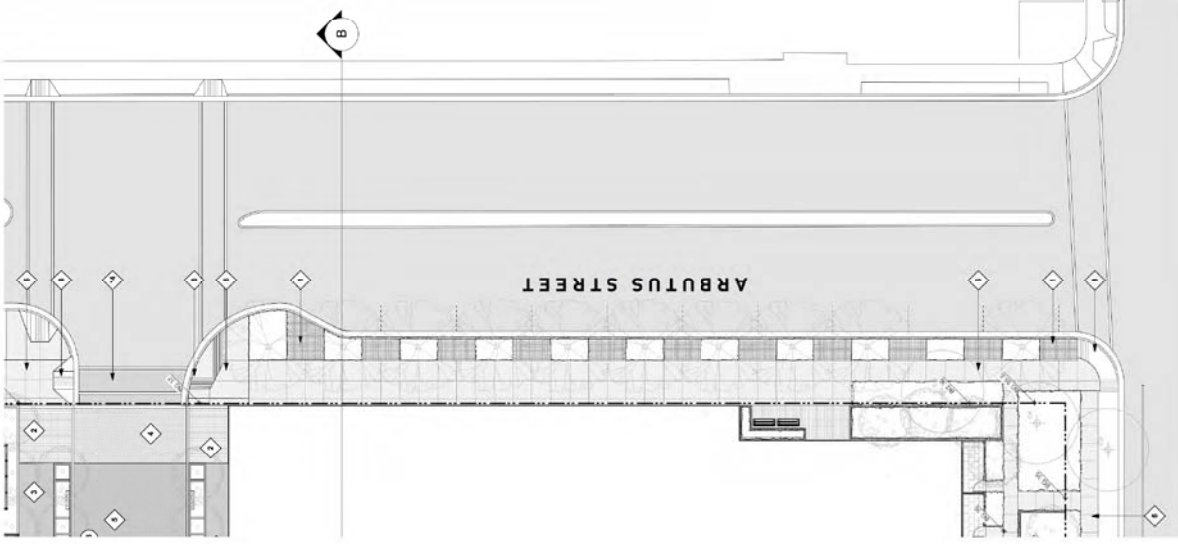
LIGHTINGS	
⊗	EVENT LIGHT / PEDESTRIAN LIGHT TYPE: 180 DEGREE
⊕	PEDESTRIAN LIGHT TYPE: 180 DEGREE



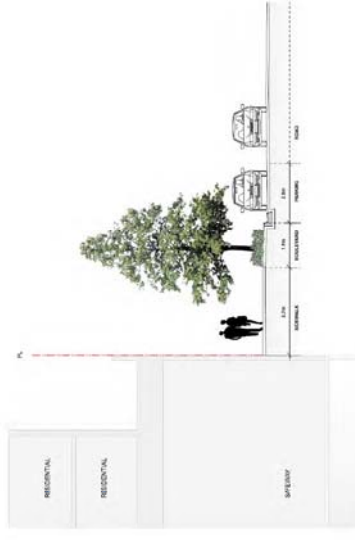
REVISIONS/ISSUES:  
BY: [Name]  
DATE: [Date]  
FOR: [Project Name]



○ ARBUTUS STREET PLAN 1  
1:500



○ ARBUTUS STREET PLAN 2  
1:500



○ SECTION A  
1:100



○ SECTION B  
1:100

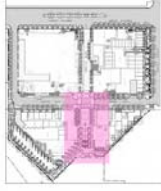












KEY MAP

**PUBLIC EVENT OPTION: FARMER'S MARKET**

- 13 TENTS IN PUBLIC SQUARE
- 25 TENTS IN ARBUTUS MEWS
- 38 TENTS IN TOTAL WITH CLOSURE OF MEWS TO VEHICULAR TRAFFIC





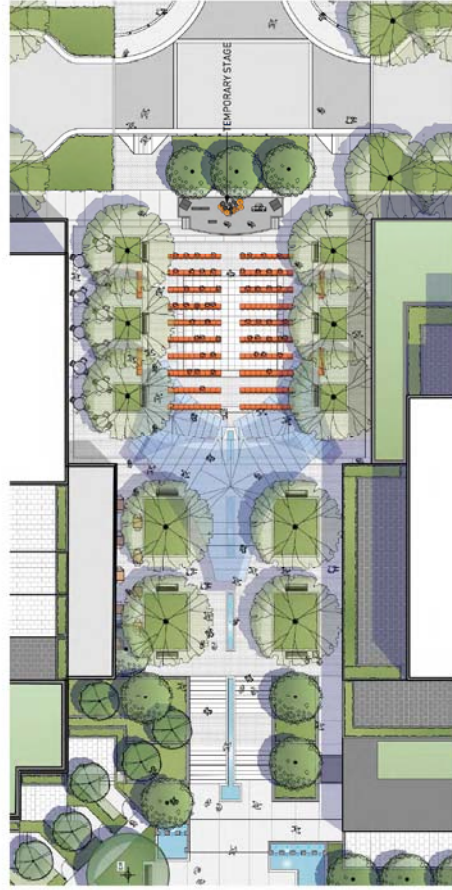


2 OUTDOOR PERFORMANCE

**PUBLIC EVENT OPTION 1:  
OUTDOOR DINING PARTY**  
24.4'X8' TABLES  
308 PEOPLE TOTAL



KEY MAP



1 OUTDOOR PERFORMANCE

**PUBLIC EVENT OPTION 2:  
OUTDOOR PERFORMANCE**  
250 SEATS TOTAL



REVISED/ISSUES:  
BY: [unreadable]  
DATE: [unreadable]  
BY: [unreadable]  
DATE: [unreadable]

**ARBUTUS CENTRE PUBLIC REALM PLANS**  
Vancouver, British Columbia



**MASTER PLAN**  
APRIL 2015

**PR 11**