



# Queen Mary Elementary

## YEAR 1 INITIAL REPORT SCHOOL ACTIVE TRAVEL PLAN

# EXECUTIVE SUMMARY

Queen Mary Elementary was one of five schools participating in the City of Vancouver 2014/2015 School Active Travel Program Planning (SATP). This process seeks to improve the safety and comfort of walking and cycling to school, and to encourage more students and families to use active transportation modes to get to and from school. SATP directly supports the City of Vancouver Transportation 2040 policy and actions related to creating higher quality walking and cycling routes to schools.

The SATP process is community-based and involved members of the School Travel Planning Committee (Queen Mary Principal and PAC) and the Municipal Steering Committee (including members from Vancouver School Board, City of Vancouver Engineering, City of Vancouver Parking Enforcement, Vancouver Police Department, and other advisory groups).

## SATP Process

The School Travel Planning Committee, parents and students provide input into the SATP process through a site walkabout, take-home travel survey and in-class travel survey. From this information, transportation challenges and opportunities were identified. This report represents the initial year of the SATP program and, the action plan (**Appendix A**), is intended to guide all stakeholder actions until the follow-up report anticipated in Fall 2017.

## School Travel Pattern

- The majority of families drive to or from school (approx. 47%). Nearly 40% of families walk to or from school
- Of the families who drive to or from school, parents reported they would allow their child to walk or cycle more if they were not alone, older, or traffic was reduced

## Transportation Challenges

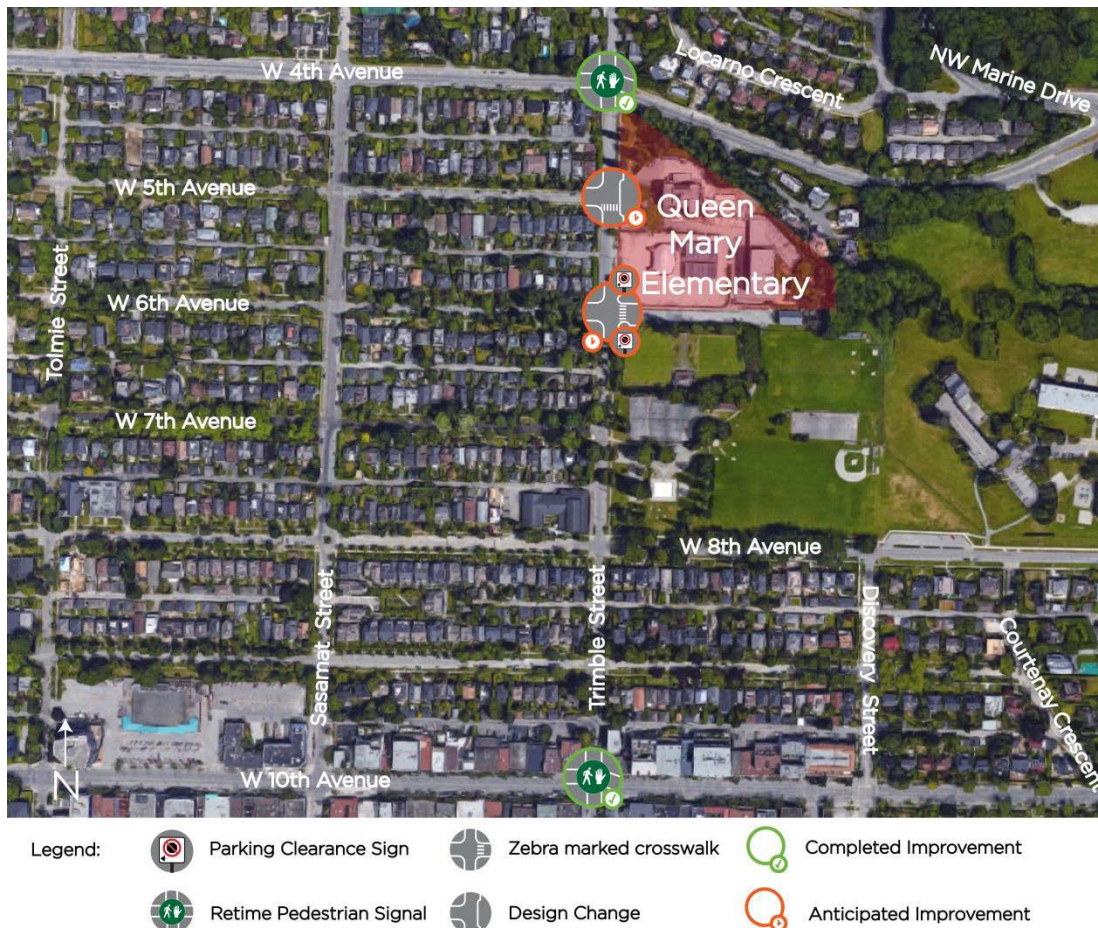
- The need for more comfortable and safe crossing facilities at school intersections
- Pedestrian visibility concerns at Trimble Street and W 6th Avenue intersection
- The lack of walking/cycling education and encouragement for students

## Key Actions

- Install zebra-marked crosswalks along Trimble Street at W 6th and W 5th Avenue
- Install curb bulges and curb ramps on the east side of Trimble Street at W 6th and W 5th Avenue

- Install school crossing sign at W 5th Avenue and Trimble Street
- Install parking clearance signs before stop signs on the north and south leg of Trimble Street with W 6th Avenue intersection, to improve crosswalk sightlines
- Remove redundant stop sign on the south leg of Trimble Street at W 6th Avenue
- Install countdown timers and increase pedestrian crossing times at signalized intersections at W 4th Avenue at Trimble Street and W 10th Avenue at Trimble Street

Figure ES1 – Proposed infrastructure improvements



### Parents Comments

- “So far it’s safe for us, since our son walks to school with an adult. But sometimes we noticed that some cars drive a little bit faster than the speed limit in this area” - Parent of a 9 year-old boy
- “We walk from school. Usually, my son tells me about what happened in school, and what made him happy or unhappy, and what made him confused or excited” - Parent of a 9 year-old boy