

WORKSHOP 6

Creating great places:
Natural systems, amenities
and the public realm

June 24, 2015 - 5.30 PM - 8.00 PM

Feedback,
Issues & Ideas

WORKSHOP OUTLINE

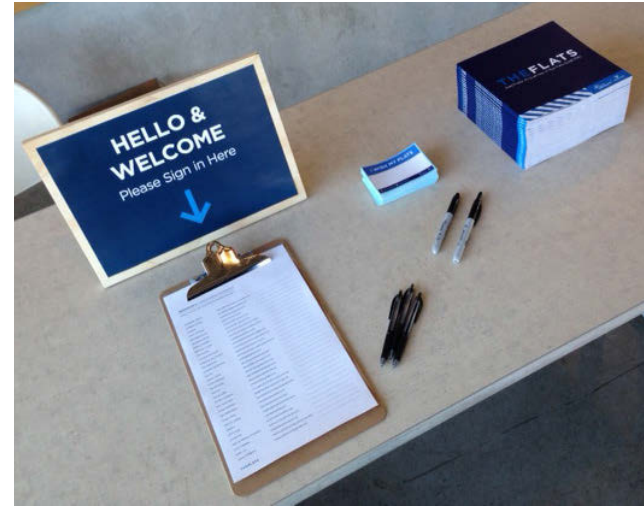
1. Introductions & Presentation
2. Key Issue - Sticky Notes Exercise
3. Facilitator Report Back Key Issues
4. Break (Facilitators sort issues into major themes at tables)
5. Opportunities, Challenges & Ideas
6. Facilitator Report Back
7. Conclude - Thank You

June 24, 2015

5.30 PM - 8.00 PM

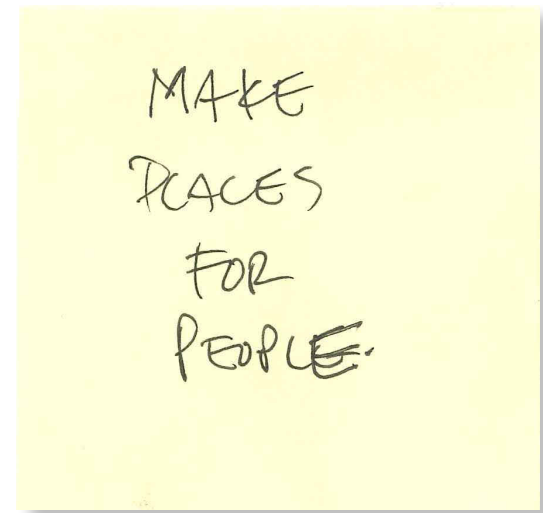
National Works Yard
701 National Avenue
Vancouver

THEFLATS



KEY ISSUES

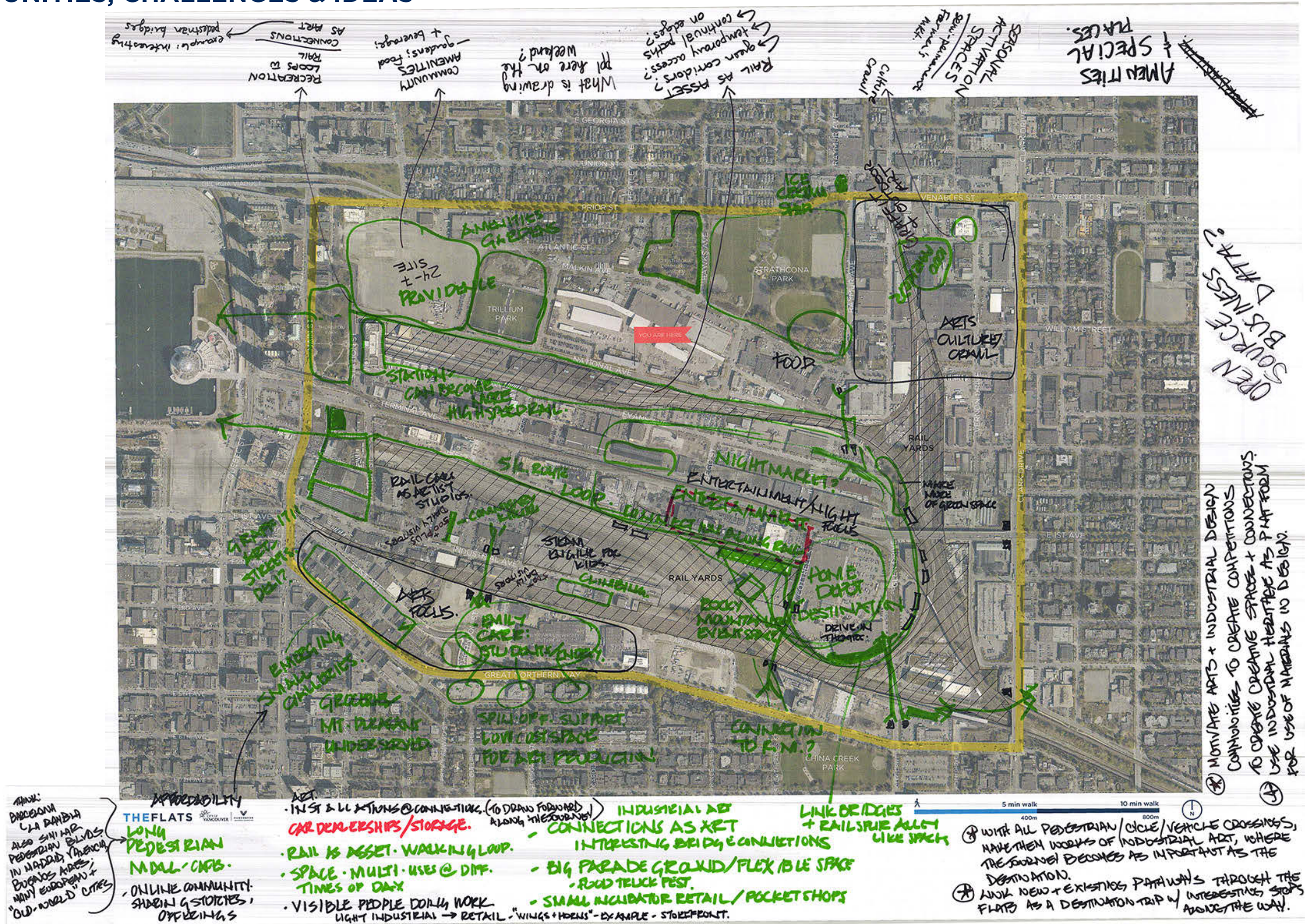
After a brief presentation, workshop participants were asked to discuss and document what they felt were the key issues that the False Creek Flats planning process needed to address, related to the workshops topic (Working in the Flats: Inner-City Industrial and Employment Intensification). The key issues were collected and organized into major themes, and these themes were used to arrange focused discussions on opportunities, challenges and ideas during the final part of the workshop.



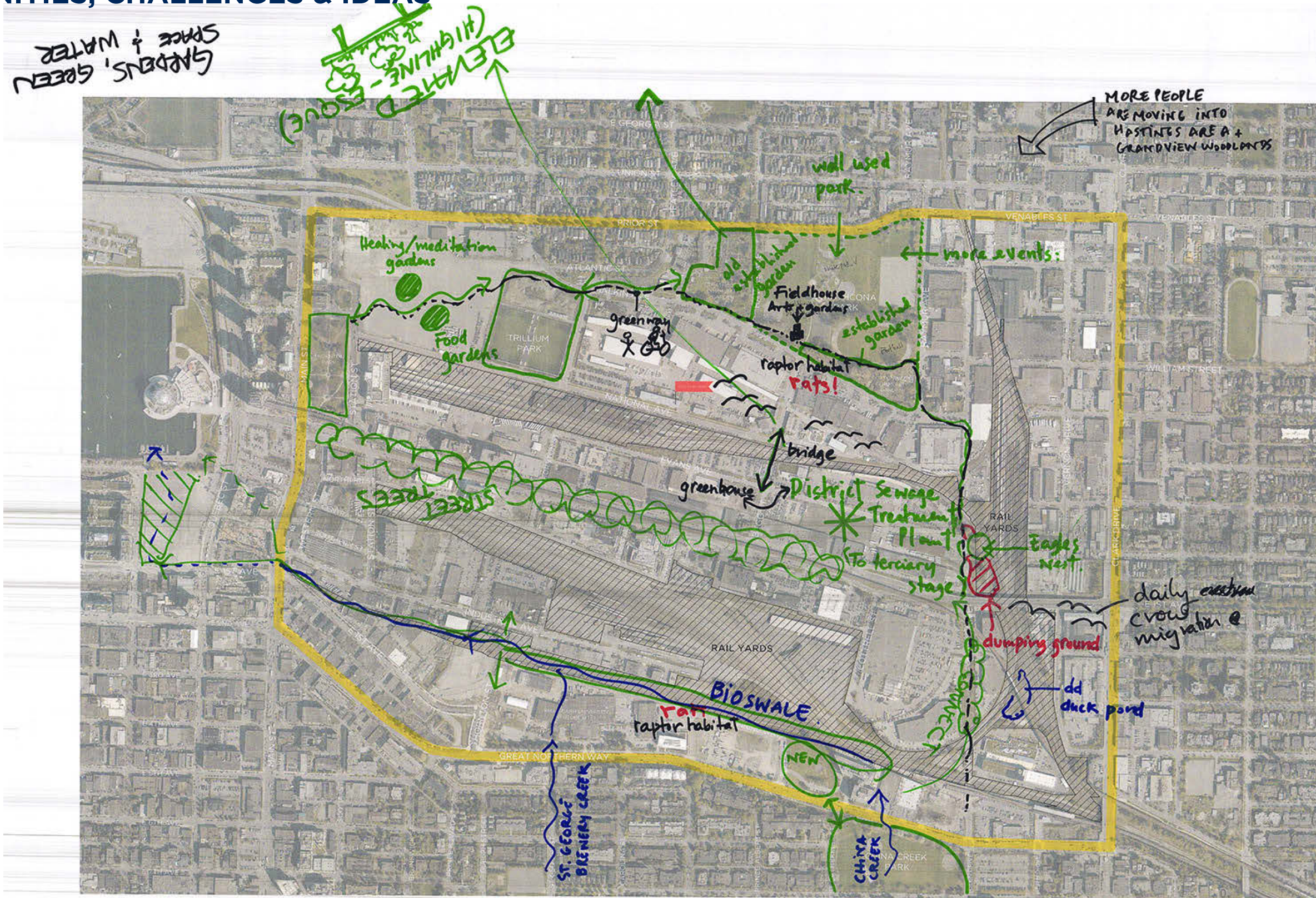
Sticky-Note Feedback: Key Issues

ISSUES THEMES	Gardens and Green Spaces	Connectivity and Paths	Amenity Services	Ecology and Natural Design	Welcoming Places and Spaces
RESPONSES FROM WORKSHOP PARTICIPANTS	Retain garden and other places for informal interaction (places to revive)	A more pedestrian friendly place - walking paths without danger of dead ends	Job density. Workers are best use?	District energy needs	Make places for people
	Protect Cottonwood community garden - don't widen Malkin Ave "orphan spaces"	Improved connections / access to transit	Fill holes, make place	Food, health, district energy	Need "places for people" on Industrial Ave
	Retaining and enhancing green space. Keeping Cottonwood community gardens intact	Connectivity	Visibility of activities	Industrial / unique character	Creating public spaces for community engagement throughout
	Food and health assets built upon (synergies)	GNW a big barrier	Mixed scale (business/space)	Mirroring natural ecosystems design in economic system design	Spaces that will be used by neighbouring residents - evenings and weekends
	The Malkin expansion proposal threatens produce row and the two of the oldest and largest and unique community gardens	North-south connections	Lack of: restaurants, night life, destinations	Incorporating and showcasing natural systems in place making (water filtration, etc.)	Vibrancy makes the flats a destination
	Need to maintain garden spaces	How to draw people in?	University, Hospital	Honoring, recognizing (sic) historical waterways	Green spaces, walking paths, lively (day & night), safe
	Cottonwood community garden - 120 plots and 200 members	VCC: need strong connection to Emily Carr	Trends Innovation. Serving school and students	Engage / celebrate tidal flats. Reintroduce water.	Green spaces, maintain key industry and include new and exciting industry (not just tech)
	Need for "impromptu" spaces	Connections - movement of people and goods	Mixed use retail/services within walk at lunch	Innovate public realm eco/arts	Big public square. Plaza, weekend market, etc.
	Fruit trees, protector (sic) gardens	"Connected (to surrounding area) multi-model streets - particularly N/S connections over the railway - link together existing or potential public spaces"	Lack of amenities in the South	Field house. Arts and garden workshops	"Creating welcoming spaces that are: - clean - safe - colourful - green - accessible - inside and out (exterior concerns and through fares)"
	Special places - cottonwood community garden	Connections N/S	A reason to visit outside of work	Keeping the oasis natural beauty created by the community gardens as the whole area develops and becomes more built up.	Keep the graffiti wall
	Keep and build on place of garden	Developing link of bike paths through rail yards	Uses: not night time places, 24 hr		Arts and culture, public space, green space, places to connect (non-commercial)
		Walking connecting special places	Way finding - messy area		Developing arts and gallery, nexus
		Flexible permeable (sic)	Dangerous at night		Protect cheap studio spaces
	Permeability between sub-areas	More intensity, use industrial land		Arts	
		Maintain existing character (keep buildings)		Affordability	
		Cool place to work and play even after hours		"Sustainable systems - animated public space (art performance) - art making space - walkable (sic) shopping spaces - temporary projects - ""managed areas"" - challenge the need to be manicured (sic)"	
		Leveraging providence as anchor to the area		I can't make art from \$6 lattes - artist in NYC	
				Affordable, flexible, studio/production space. Light industrial resources, materials, service access	
				Shared spaces and resources (public and private)	
				Keep existing assets and character	

OPPORTUNITIES, CHALLENGES & IDEAS




OPPORTUNITIES, CHALLENGES & IDEAS



THE FLATS | FALSE CREEK FLATS PLANNING PROCESS

WILD UNSUPERVISED PLAY SPACES
E.G. ADVENTURE PLAYGROUNDS

- Green roofs on buildings 
- with sea level rise and rise of salty ground water, gardens will adapt as marshes → link to research and graduate studies on this adaptation

Cottonwood Garden - 22 years +
1/3 plots Asian Garden
1/3 bird habitat - (Native Garden)
Mature Trees, Eagle's nest.

OPPORTUNITIES, CHALLENGES & IDEAS

CONNECT IDEAS



BIODIVERSITY CORRIDOR.

VIEWS ALONG RAIL.

VIEWS UNUSUAL

RISK OF CLASS DIVIDES
Inclusivity

PARK IS A TREE MUSEUM UNDER USED

INCREASED PRESSURE ON THE SEA WALL NEED BALANCE WEST → EAST

FUN BRIDGES - PARKS, VIEWS, ART ETC

THE FLATS | FALSE CREEK FLATS PLANNING PROCESS

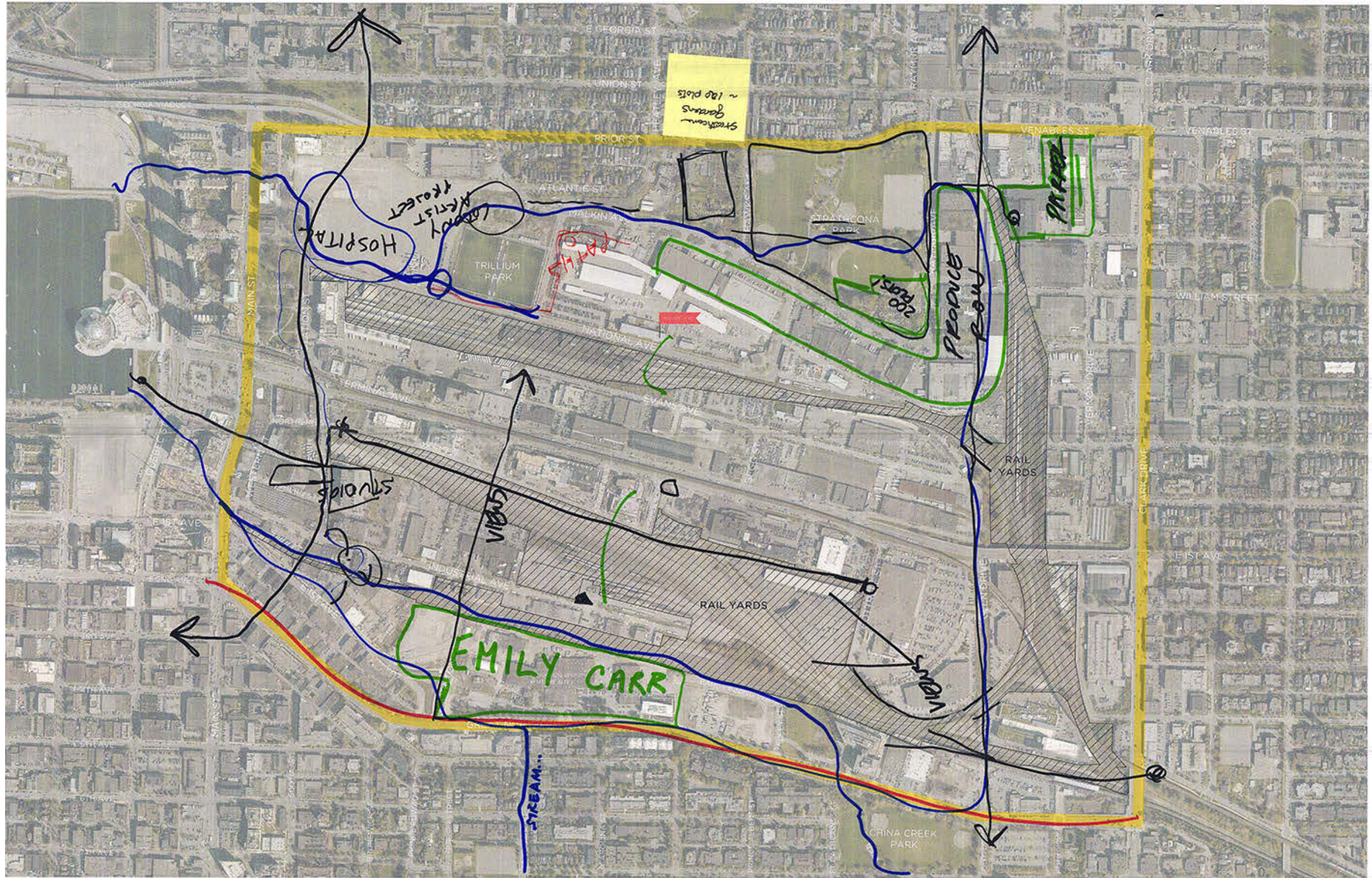
LESS CARS IN FUTURE = LESS TRAFFIC = MORE BIKES

PEDESTRIAN & BIKE BRIDGE WALKING ROUTE

LACK OF SPACES TO MEET - WARM CAN HANG OUT IN A PUBLIC SQUARE

PLACES NEED TO BE ACCESSIBLE FROM ALL PLACES

OPPORTUNITIES, CHALLENGES & IDEAS



THE FLATS | FALSE CREEK FLATS PLANNING PROCESS



MIXED USE
ZONING
(height restrictions)

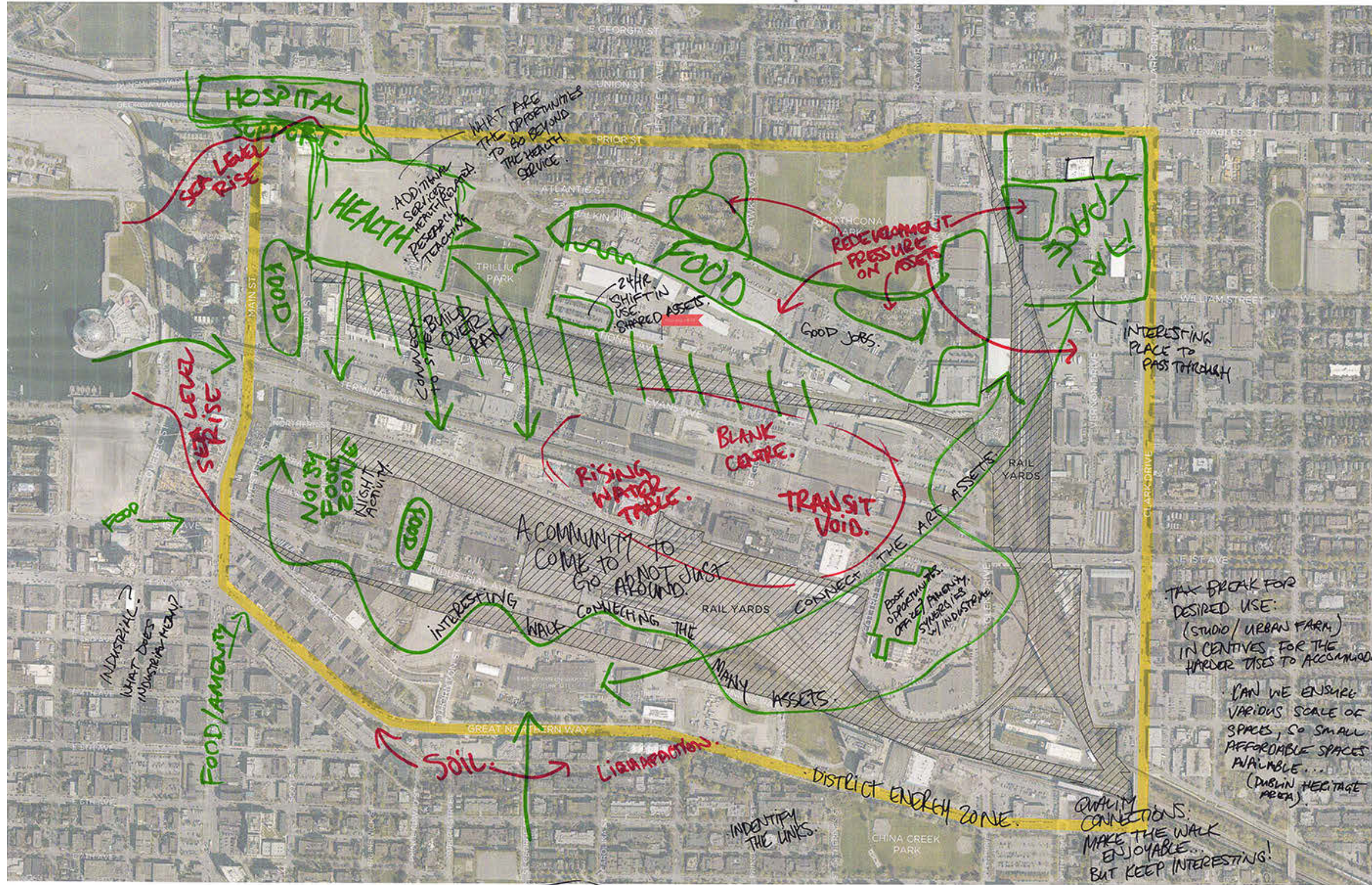
ART + THE
PUBLIC REALM.
CURATED
PUBLIC REALM
THAT IS PROGRAMMED
BY THE COMMUNITY

ART &
ECOLOGY
INTERACTING

Handwritten note on a yellow sticky note:
The plan is to create a public realm that is curated by the community. It will be a mix of art and ecology that is interactive.

OPPORTUNITIES, CHALLENGES & IDEAS

INTENSIFYING USES & ACTIVITIES



THE FLATS | FALSE CREEK FLATS PLANNING PROCESS

ARTS & THE PUBLIC REALM

- ARE THERE WAYS TO SHARE SPACES OVER 24 HOURS?
- HOSPITAL @ DAY, SOMETHING ELSE @ NIGHT?

- SHARED WORK SPACES / TOOLS
- OFFICE & EQUIPMENT
- MULTI-USE SHARED WORKSPACE
- HEALTH/FOOD/WORK
- MULTI-USE SHARED WORKSPACE
- HEAVY WEIGHT LINKED
- METAL/WOOD MATERIALS

"GREENEST AREA"

CONNECT ACROSS THE TRACKS



GROWTH/INVESTMENT ↑
AFFORDABILITY ↓

PULL ASSETS FROM EDGES & BRING IN. CONNECT

EXPERIENCE FOOD, ALL SCALES.

INNOVATION ZONE:
- PLACE TO EXPERIMENT W/ LIMITS OF CODE, METHODS
- LOOK TO LINK NEW IDEAS @ SCHOOL W/ PRACTICAL

TAX BREAK FOR DESIRED USE (STUDIO/URBAN FARM) INCENTIVES FOR THE HARDER USES TO ACCOMMODATE.

CAN WE ENSURE VARIOUS SCALE OF SPACES, SO SMALL AFFORDABLE SPACES AVAILABLE... (DUBLIN HERITAGE AREA)

QUALITY CONNECTIONS: MAKE THE WALK ENJOYABLE... BUT KEEP INTERESTING!