

# FALSE CREEK SOUTH



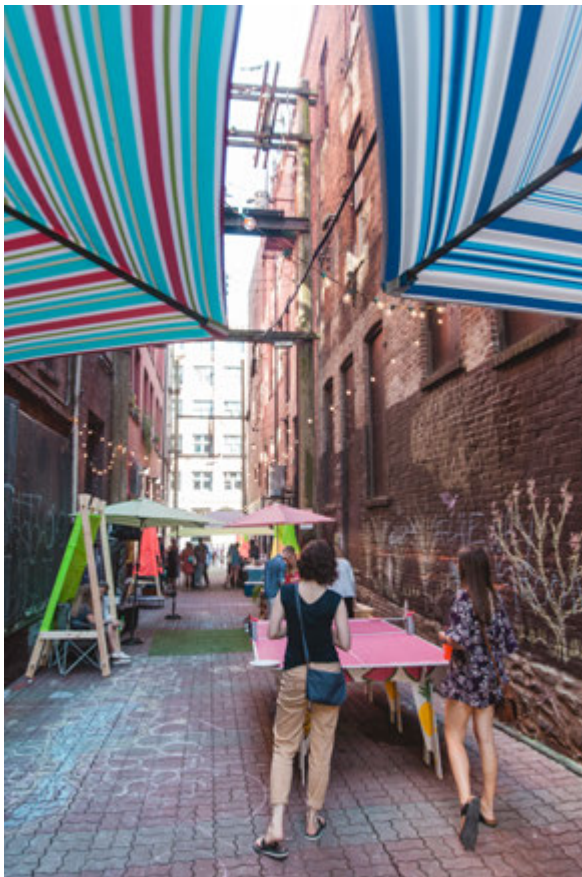
PUBLIC REALM +  
OPEN SPACE

## **A City Overview**

# FALSE CREEK SOUTH

## Definitions

### PUBLIC REALM



### OPEN SPACE



# FALSE CREEK SOUTH

## How it works

### Planning, Design & Construction



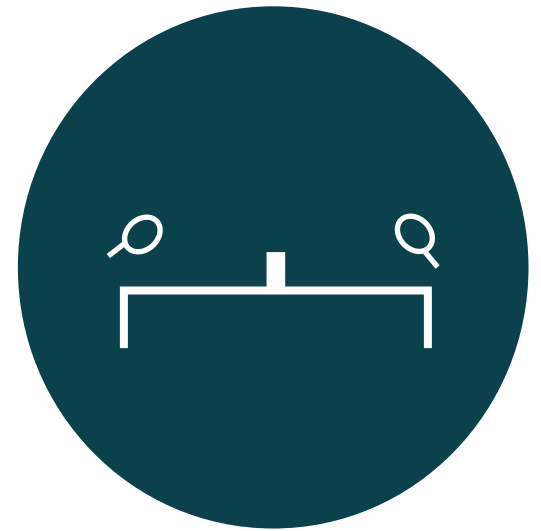
- parks
- parklets
- courtyards
- plazas
- alleys

### Stewardship



- COV
- Park Board
- Community Partners

### Programming



- active + passive space
- street furniture
- art

## Who is involved



## City + Park Board Initiatives

### The Future of Our Public Realm + Open Spaces

- Inventory of facilities, amenities, private and public spaces
- An opportunity for the public to weigh in on the future of parks and recreation and public space
- Long range planning tools to identify how to best serve residents and visitors



**How do we manage public space? Who is responsible?**

**How do we increase our public spaces in a growing city?**

## KEY Public Space Considerations City-wide

### **Population Demand.**

While population increases, land is finite. Existing open spaces will have to work harder.

**Focus on Equity.** Not all neighbourhoods in Vancouver have equal access to parks and open spaces.

**Sea Level Rise.** A changing climate and more extreme weather events bring changes to our landscape.

**Competing Space.** As the city grows and land values increase it becomes harder and harder to find spaces for new public places.

# FALSE CREEK SOUTH

## A playbook (master plan) to guide the future of parks and recreation.

Survey

Public Events

Speaker Series

Workshops

Observational research study of how parks are used

## Findings

Vancouverites are active!  
20% above the national average.

Overall, majority of Vancouverites are satisfied with our parks (86%).

Access to nature emerged as one of the most important priorities.

## VAN PLAY INITIAL RESULTS

“WHAT’S YOUR **BIG** IDEA?”

- More green space
- Improve existing services, facilities & amenities
- Enhance social connections & community belonging

“**TOP 3**  
MOST IMPORTANT  
CONSIDERATIONS?”

- Health and well-being
- Improving existing services, facilities & amenities
- Social connections & community belonging

# FALSE CREEK SOUTH

*Downtown Focus*

## PLACES FOR PEOPLE INITIAL RESULTS

**A strategy to shape the future of public spaces.**

### PUBLIC LIFE STUDY

Create an understanding of how we experience and interact with our public spaces.

First round was summer 2017 and the second round is in February to compare seasonal use patterns.

## Findings

### “WHY IS PUBLIC SPACE **IMPORTANT?**”

- Makes the city more attractive
- Offers places to gather and to meet
- Creates opportunities to connect with nature

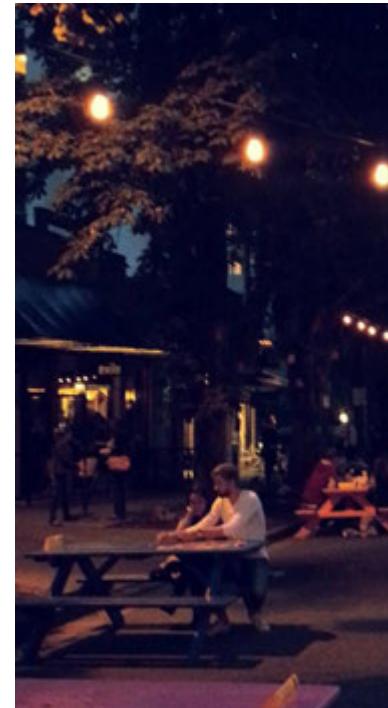
### “WHAT’S YOUR **BIG** IDEA?”

- Green Space
- Pedestrianize Streets
- Public Art



# FALSE CREEK SOUTH

## VIVA



**Work with community to animate public spaces and to pilot new ways of imagining and programming public spaces.**

Foster **SOCIAL CONNECTIONS**

Design new **ACTIVATIONS**

**TRANSFORM** streets, alleys and parking spaces to public places

Build new permanent plazas and monitor public life

## PLAZA STEWARDSHIP

Long-term strategy to develop a plaza stewardship program.

- Who owns a public space?
- Who governs a public space?



## Take Away Messages

### FOR THOUGHT

What experiences and interactions do you want your parks and open spaces in FCS to enable and to create?

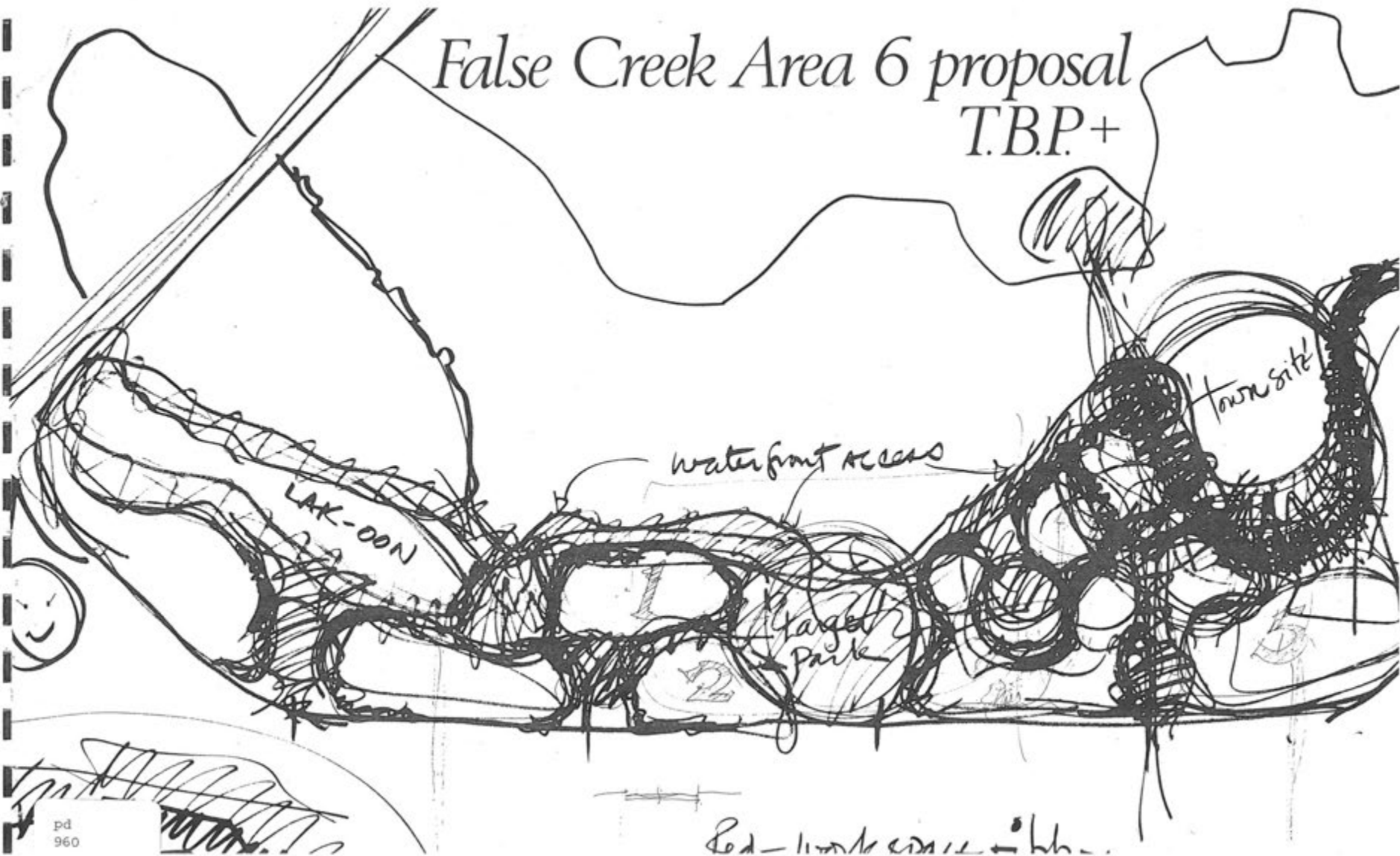
**Appetite for more.** We need more public places as our city changes and grows.

**Social Connections.** We have heard that parks and open spaces are very important for people to meet.

**Balance.** Current analysis demonstrates that we need places for socializing, quiet relaxation, sports and other activity.

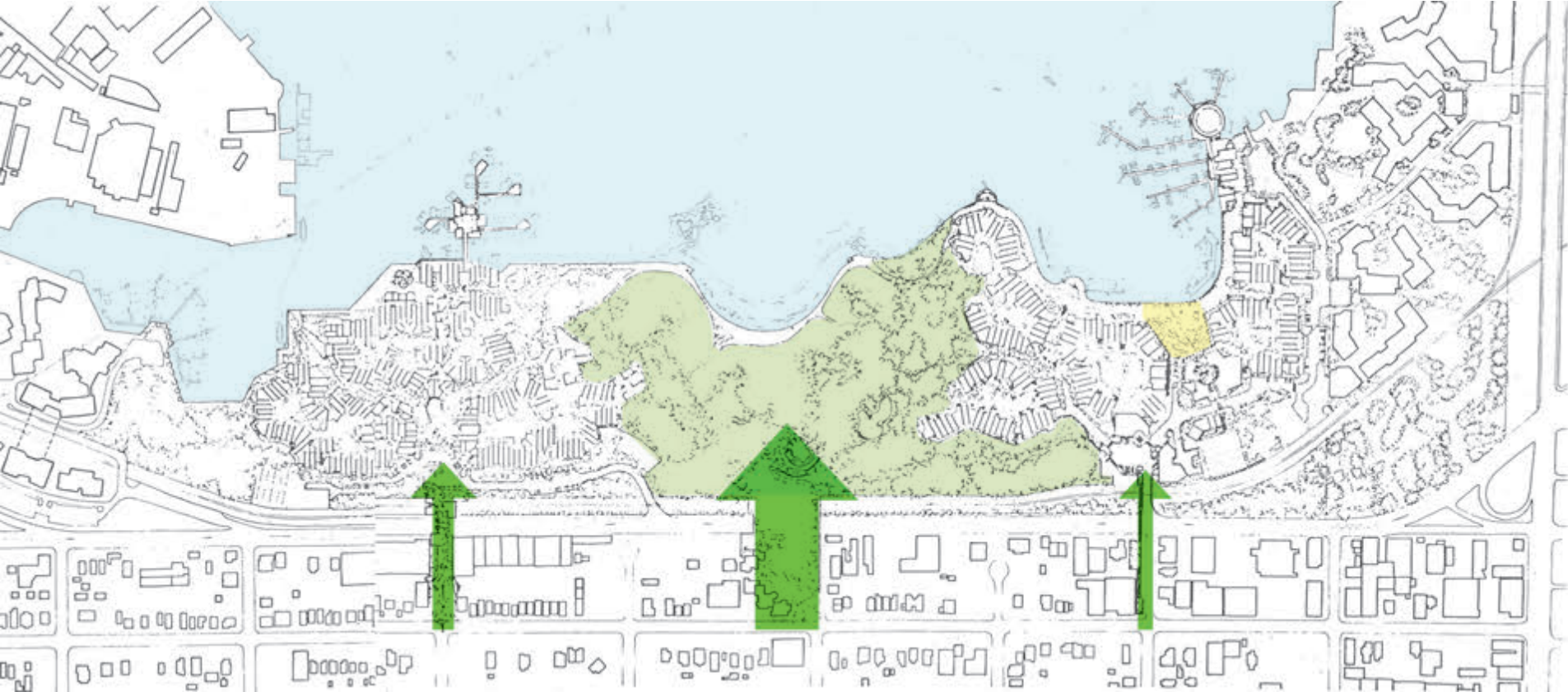
**Access to Nature.** We have heard that accessing nature in the city is a priority.

# HISTORICAL CONTEXT



Historical Context

# A Connected Community



# Waterfront Access

THE PUBLIC SHOULD HAVE ACCESS  
TO THE ENTIRE WATERS EDGE...



FERRIES ...  
FOR CROSSING  
THE CREEK.



# Variety of Experiences

**PARKS**  
**OPEN SPACE**



**NEIGHBOURHOOD**  
KIDDS PLAY - IN ENCLAVE ENCLOSURE  
PEDESTRIAN PATHS - ETC

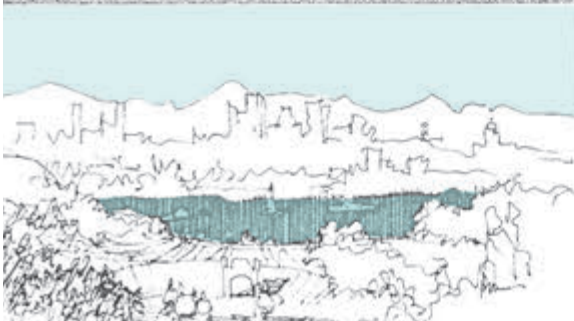
**PRIVATE**  
COURTYARDS BALCONIES GARDENS ETC



**PUBLIC**  
STREETS - SQUARES  
PIERS - URBAN FOREST  
BEACHES - BRIDGES



*a quiet zone  
in the forest.*



# Pathways + Trails

## CIRCULATION NETWORKS


**PEDESTRIANS**  
SHOULD FIND A VARIETY OF PATHS OFFERING A VARIETY OF EXPERIENCE

*a squandered element of the sidewalk*

INTERNAL PATH

OVER-PATH

**PEDESTRIAN PATHS IN EXPANDING LOOPS**  
A PEDESTRIAN SHOULD BE ABLE TO EMBARK ON A STREET IN A VARIETY OF DIRECTIONS AND BE ENSURED OF BEING ABLE TO CONTINUE ON A PATH THAT WILL RETURN HIM TO HIS DESTINATION WHERE HE BEGAN. THESE PATHS SHOULD CONNECT WITH OTHER LOOPS SO THAT A VARIETY OF DISTANCES MAY BE TRAVELLED AND STILL RETURN.




**PEDESTRIAN PATHS** - LINED WITH ACTIVITIES SHOULD CONNECT FOCUSES OF ACTIVITY - BOTH INSIDE AND OUTSIDE THE DEVELOPMENT AREA. ACTIVITIES HAPPEN BETWEEN RESIDENTIAL ENCLAVES

\*PLACE\*

\*PLACE\*

PATH





# Connecting to Transit

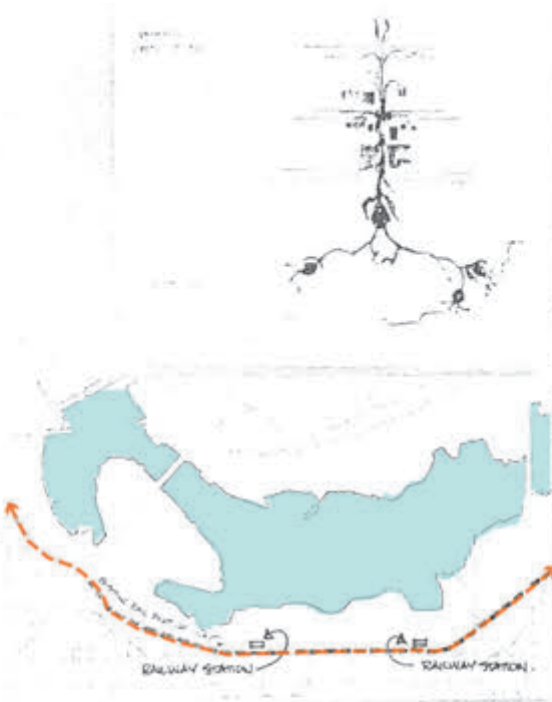
## TRANSIT

EXISTING RAIL RIGHT-OF-WAY RESERVED FOR FUTURE TRANSIT.

quote from City of Vancouver report on area B...

"ALL POSSIBLE EFFORTS SHOULD BE MADE TO ENSURE THE ADEQUATE PROVISION FROM THE TRAVEL AND ACCESS TO TRANSIT."

"TRANSIT SERVICES SHOULD BE INTRODUCED WITH THE FIRST DEVELOPMENT"



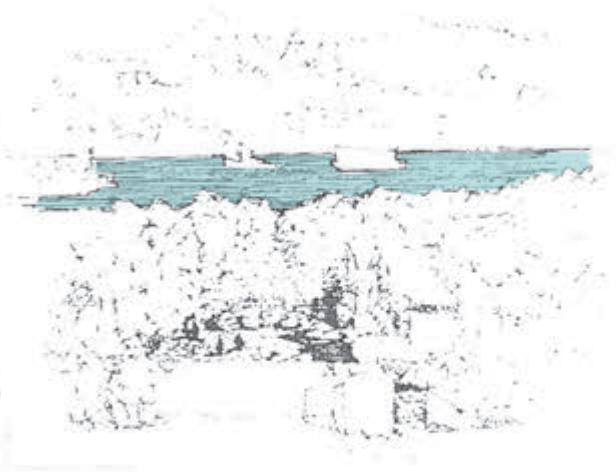
## SLOW/FAST GRADIENT

MEANS SIMPLY THAT THE INTENSITY AND NATURE OF ACTIVITY GRADUALLY DECREASES FROM SOUTH AVAILABLE TO THE INFREQUENT, SO YOU MAY FIND PEACE WHEN YOU GET THERE.

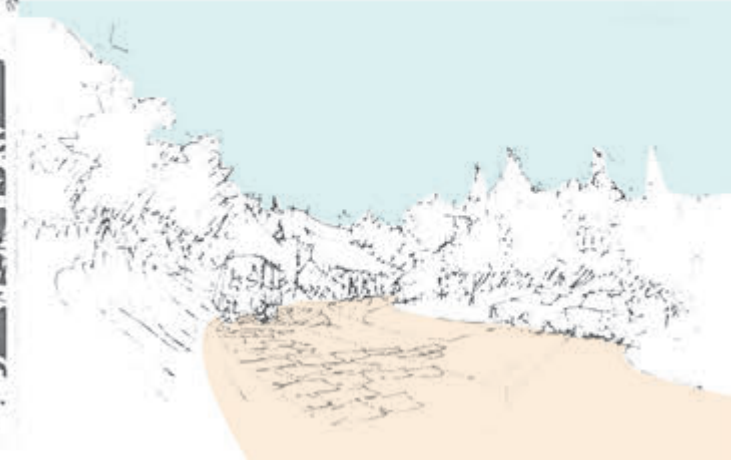


MINIMIZE CONTACT BETWEEN PEDESTRIANS & VEHICLES

FACILITATE OTHER FORMS OF MOVEMENT.

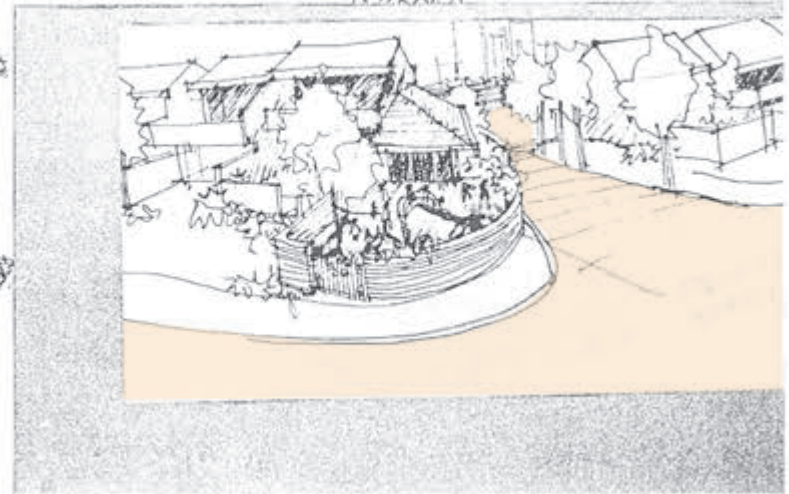
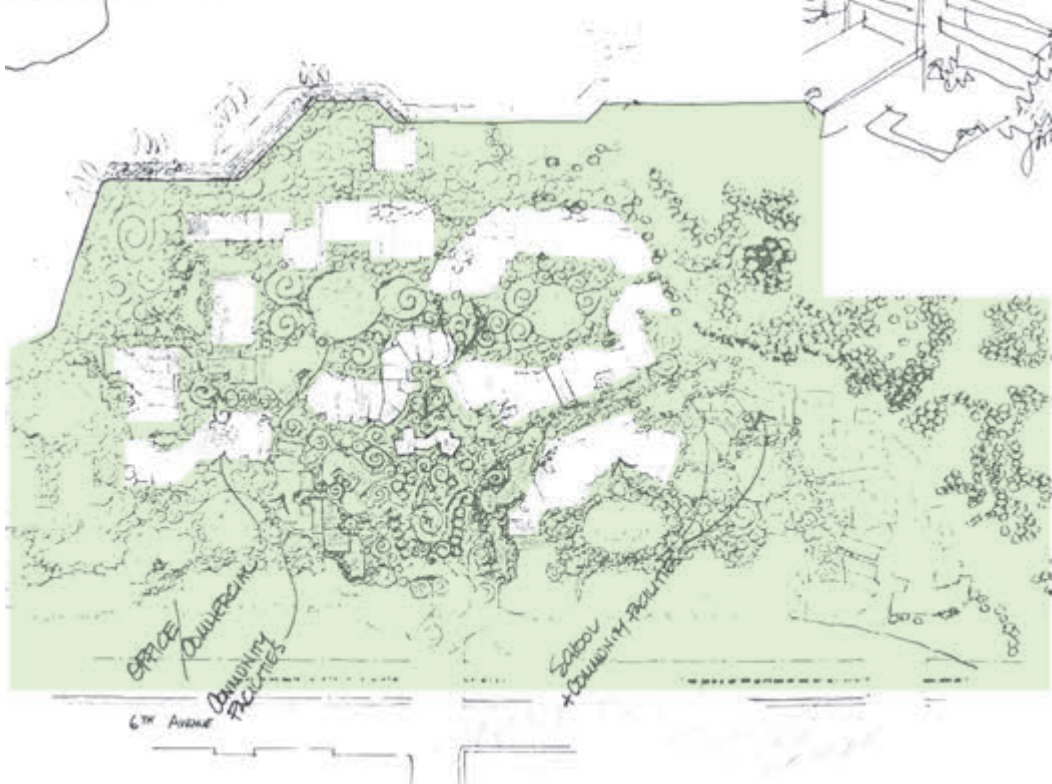
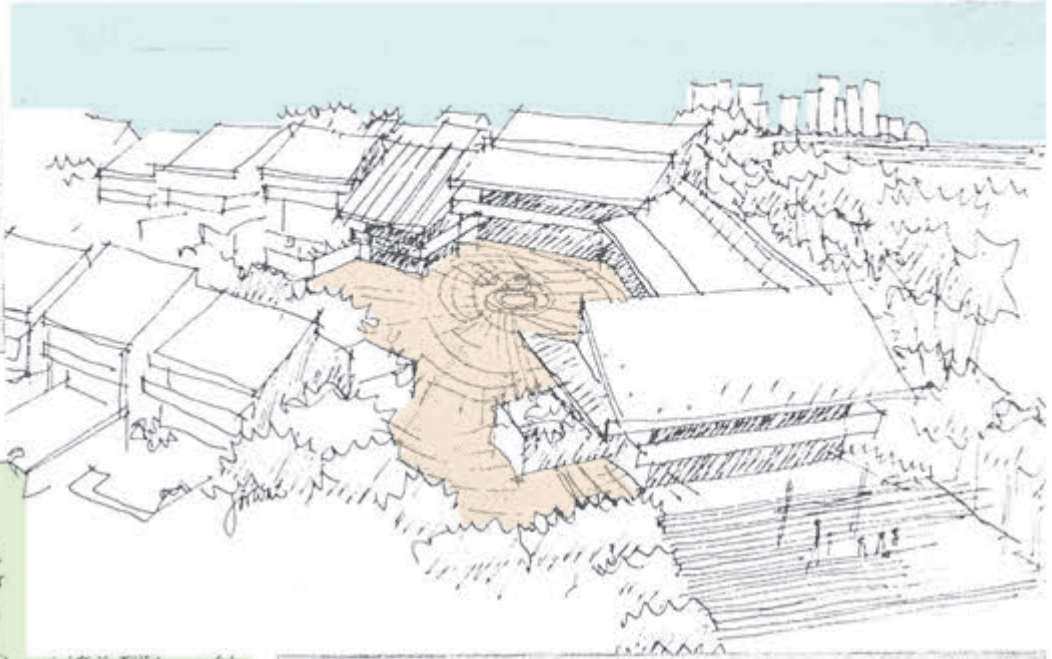


RESIDENTS (position levels for carrying children) and manufacturing industry.



# Historical Context

## Community Uses



# Focus of Activity

**ACTIVITY FOCII**  
WHERE PATHS MEET - THE FOCUSING OF  
ACTIVITIES ABOUT A  
SQUARE, PLAZA, PIAZZA ETC.



Public Realm & Open Space

# LINEAR PARKS



Quartier Atlantis, Paris



Hammarby Sjöstad , Stockholm, Sweden



Quartier Atlantis, Paris

# Public Realm & Open Space

## COURTYARDS



Sluseholmen, Copenhagen



Gangnam District, Seoul South Korea



Vauban, Freiburg, Germany



Vastra Hamnen, Malmo, Sweden

Public Realm & Open Space  
**NATURAL AREAS**



Paris River Gauche, France



Yanweizhou Park, Jinhua, Zhejiang Province, China



Queenstown, New Zealand

Public Realm & Open Space

# PLAZAS



Zhangjiagang Town River, China



Mint Plaza, San Francisco, USA



Aker Brygge, Oslo, Norway



Arlington, USA

Public Realm & Open Space

# STREETCARS



Bilbao, Spain



Bilbao, Spain



Strasbourg Tram, France



Public Realm & Open Space  
**WATERFRONTS**



South Waterfront Park, Portland, Oregon



Zhangjiagang Town River, China



Oslo, Norway

# COMMUNITY GARDENS & FOOD



Matadero Madrid, Spain



SEFC, Vancouver, Canada



Squamish, BC, Canada

# Public Realm & Open Space

## **PUBLIC ART**



Toronto, Canada



Tanner Springs Park, Portland, Oregon



The Gates, New York, Christo and Jeanne Claude