

# Grandview- Woodland Neighbourhood Transportation & Parking

Stakeholder  
Advisory Group

Meeting # 4  
September 14, 2017



- 6:30 pm Intros & Welcome
- 6:45 pm Commercial-Broadway Station Phase 2 Upgrade
- 7:10 pm Break
- 7:20 pm Project Updates
- 7:45 pm Closing & Next Steps



# Introductions



- Grandview Woodland Area Council
- East Village / Hastings North BIA
- Commercial Drive Business Society
- Italian Day Festival
- ISS of BC
- The Kettle Society
- Kiwassa Neighbourhood House
- Vancouver Coastal Health
- REACH Community Health Centre
- TransLink
- Streets for Everyone
- BEST
- HUB
- Advisory Committees
  - Persons with Disabilities
  - Seniors’
  - Active Transportation
  - Urban Aboriginal Peoples
- City of Vancouver

# Commercial-Broadway Station Phase 2 Upgrades

Matt Edwards, TransLink



# Commercial Broadway Station Upgrade

*Grandview-Woodland Transportation Advisory Group  
September 14, 2017*



# Background

- Busiest station on the network serving 150,000 people/day
- Functions as a major network hub where the Expo Line, Millennium Line and UBC 99 B-Line routes converge
- Evergreen Line has resulted in an increase in passenger transfers between the Expo Line and Millennium Line Platforms.



## Phase I

- Relocate Elevator
- New station entry from 10<sup>th</sup> Avenue
- New escalator and new stair serving the new entry
- Glazed curtain wall full length of the concourse level to improve CPTED





# Phase 2 - Rendering – View looking Northwest



## Phase 2 Scope

- New inbound platform in BW station and additional vertical circulation
- New passerelle over Broadway/Shopper's Drug Mart connecting to CM
- New vertical circulation connecting passerelle to the CM Station concourse



## Phase 2 Scope

- Widening of the existing passerelle over the Grandview Cut
- Additional amenity space
  - CRU
  - Bike Parkade
  - Policing Hub





# Rendering - View looking South





# Design Objectives

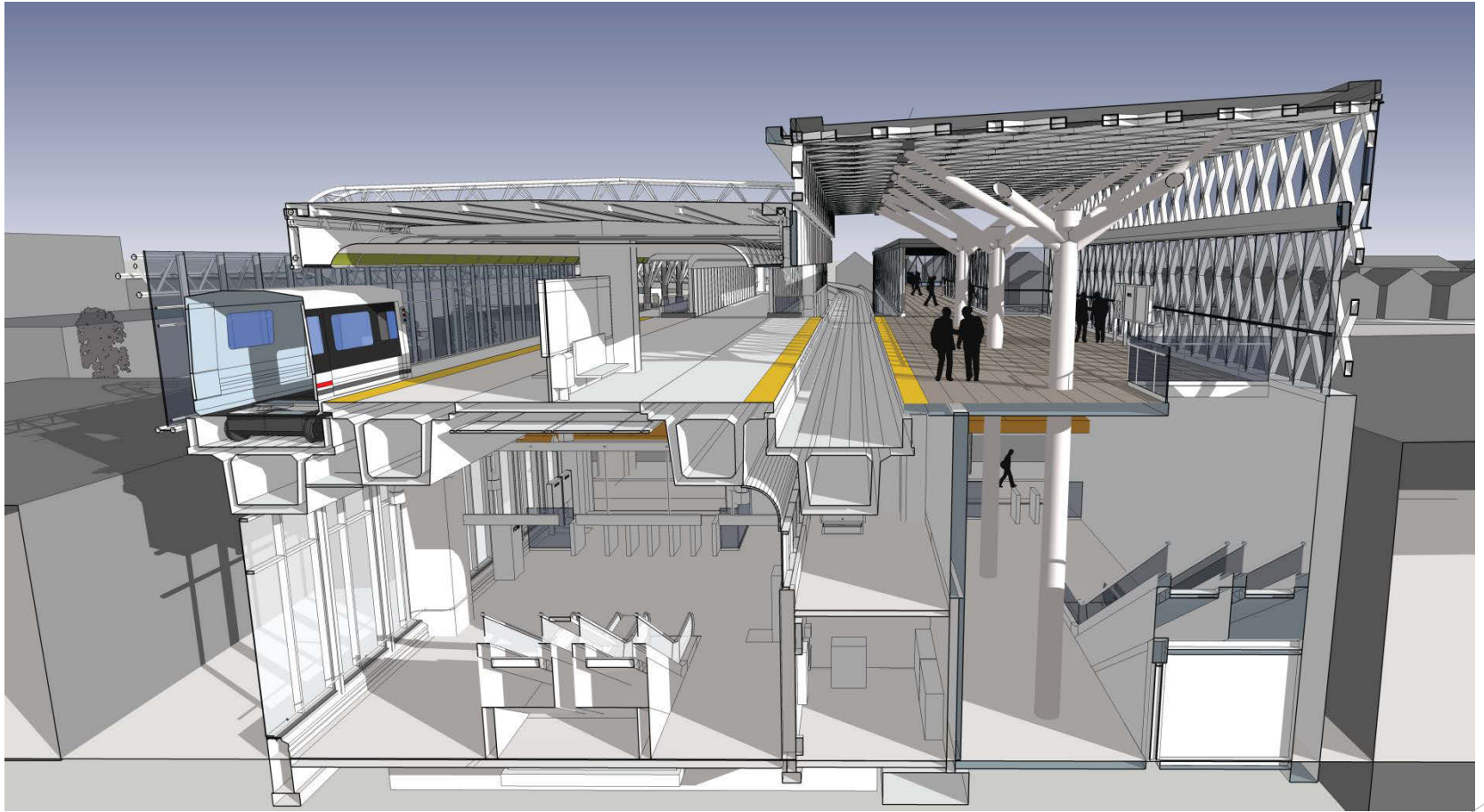
- **Optimize current and new passenger circulation**
- Improve pedestrian access, wayfinding and lighting
- Enhance station integration into the local urban environment
- Upgrade and unify the disparate building elements into a coherent single station identity through appropriate architectural massing, material selection and quality of detail.
- Optimize phasing and constructability options due to scarcity of available land and uninterrupted station operations.



# Rendering – 10<sup>th</sup> Avenue

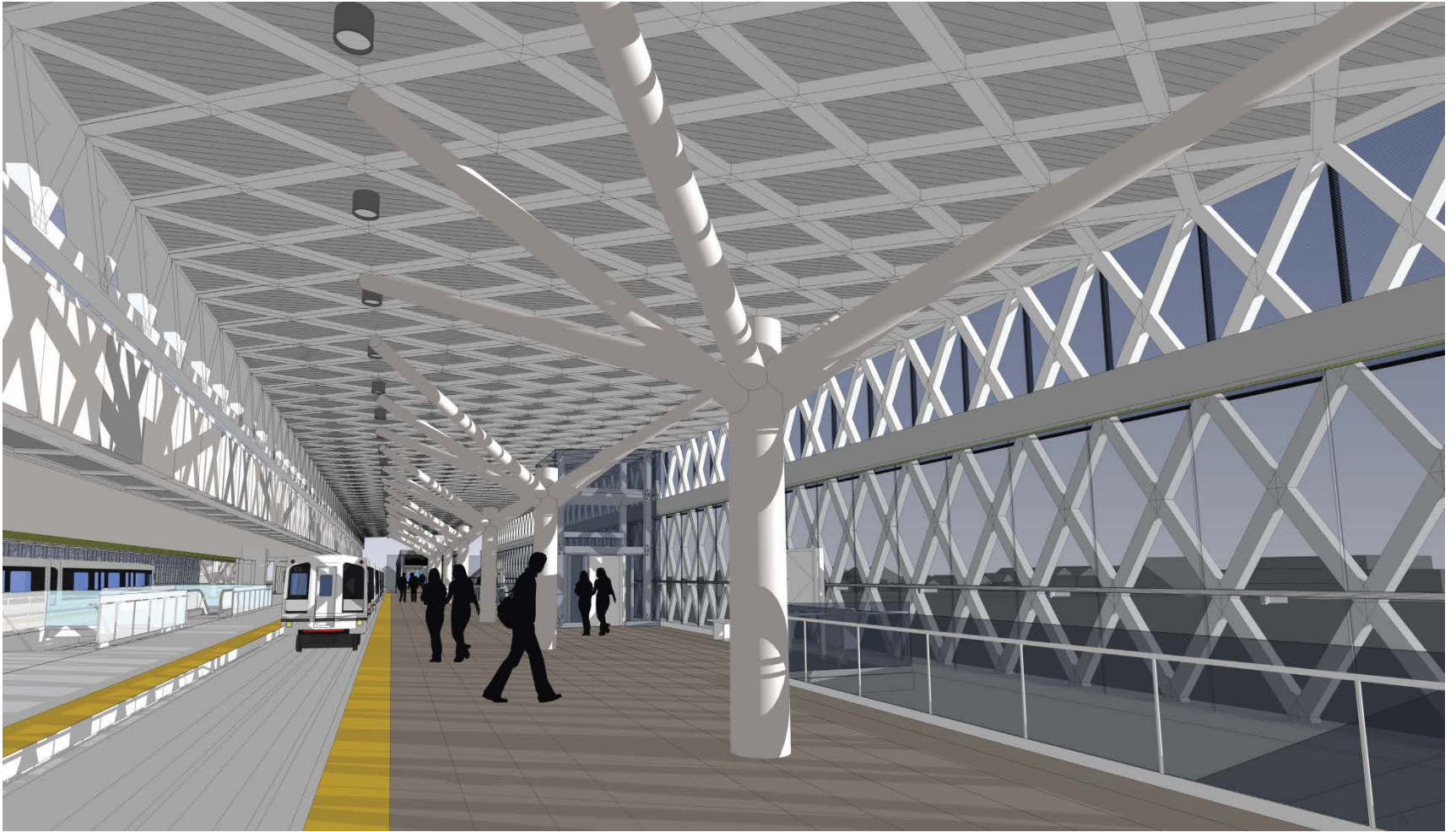


# Section through Broadway Station looking North



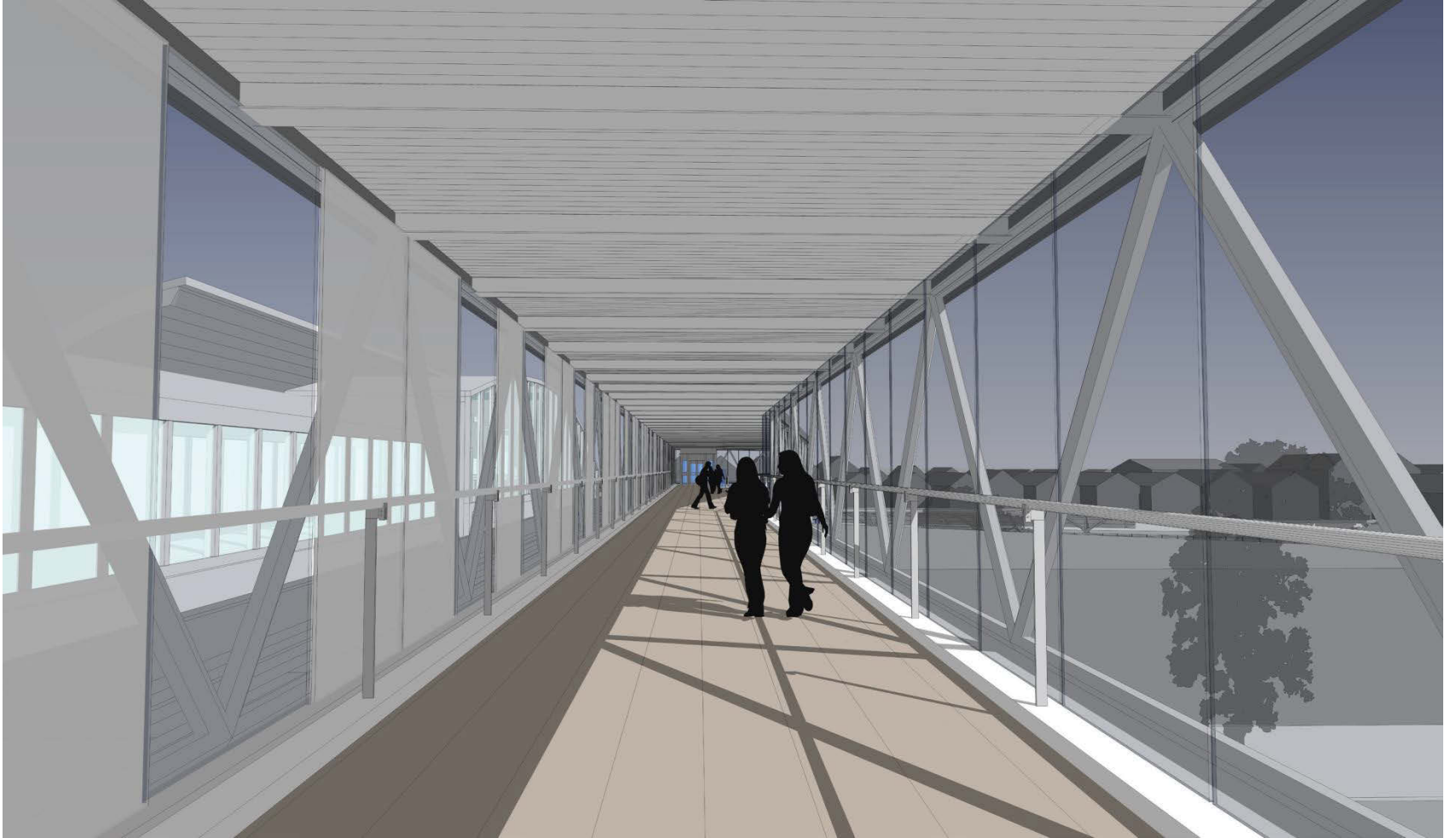


# New Platform looking North





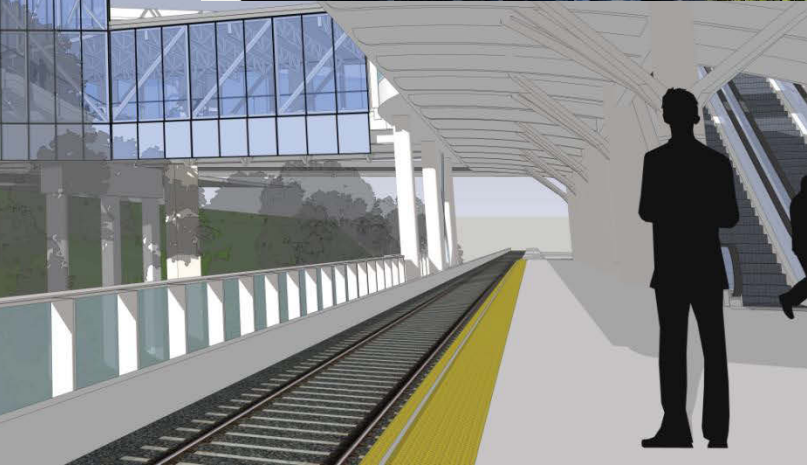
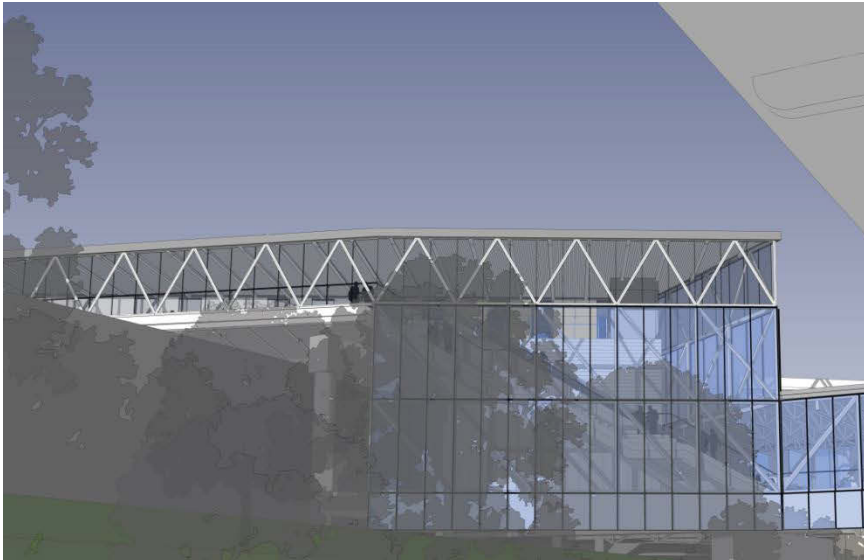
# New Pedestrian Overpass looking North



# Millennium Line Station entrance

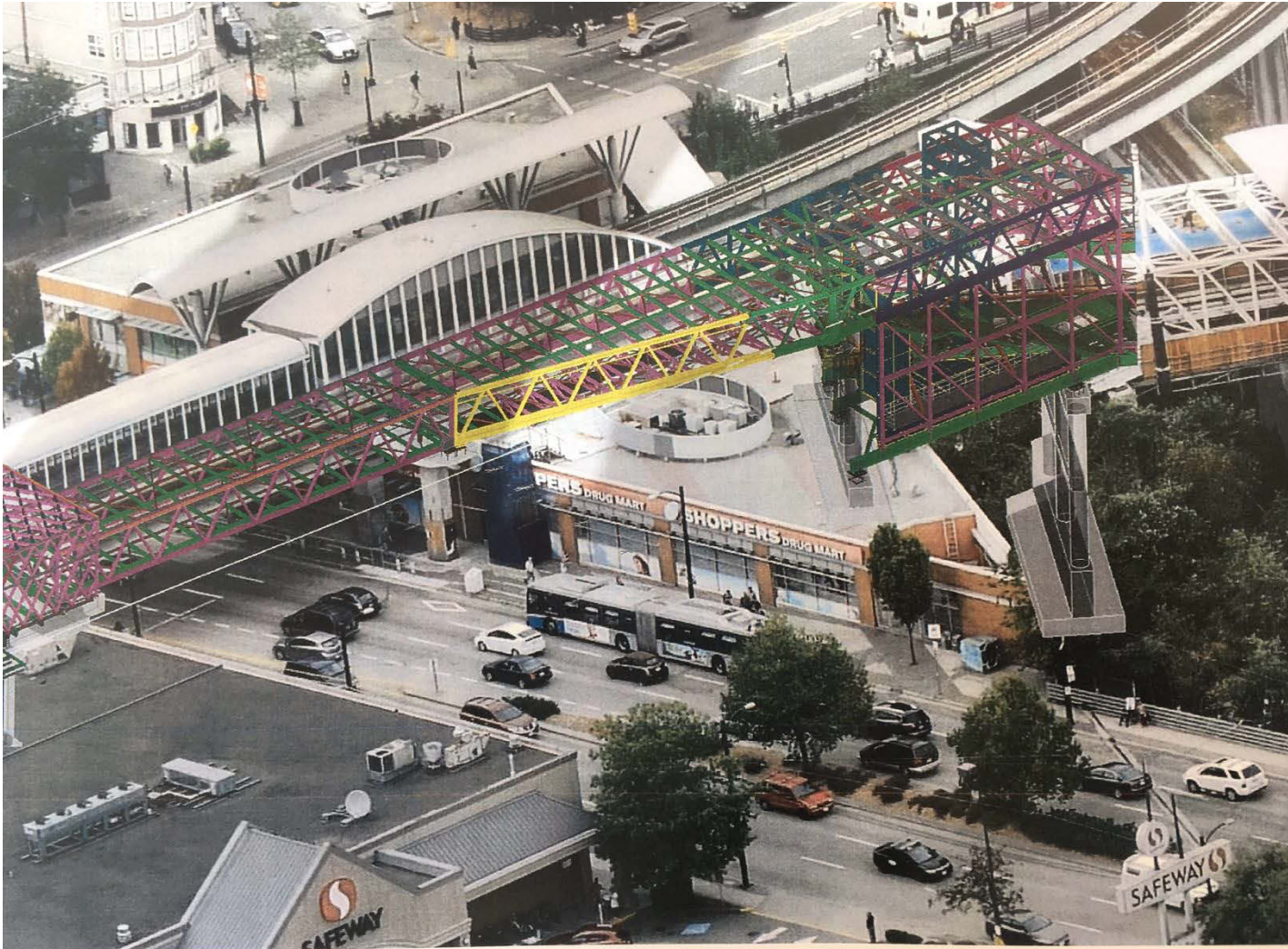


# View from Millennium Line Platform





# Significant Construction Activity

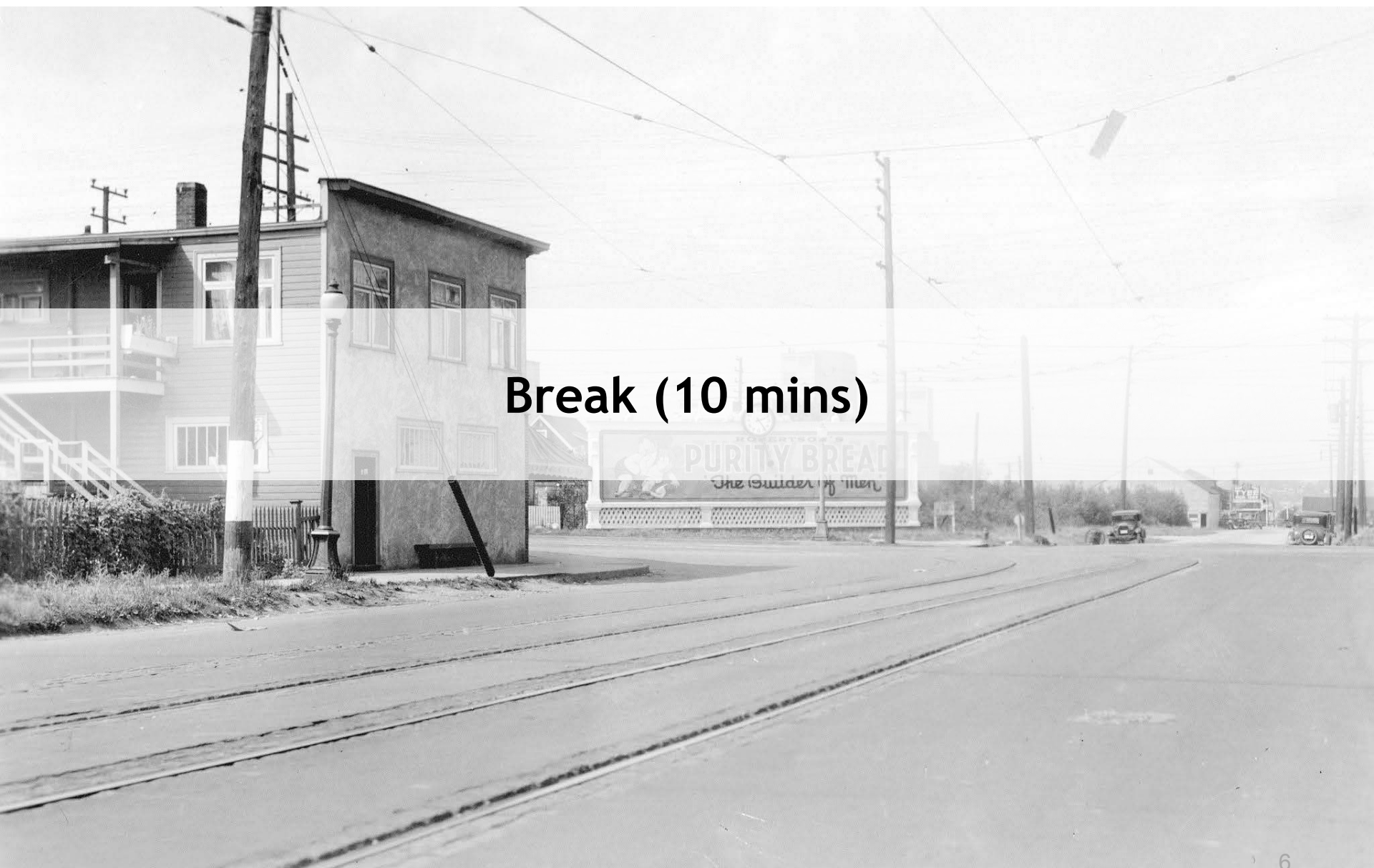




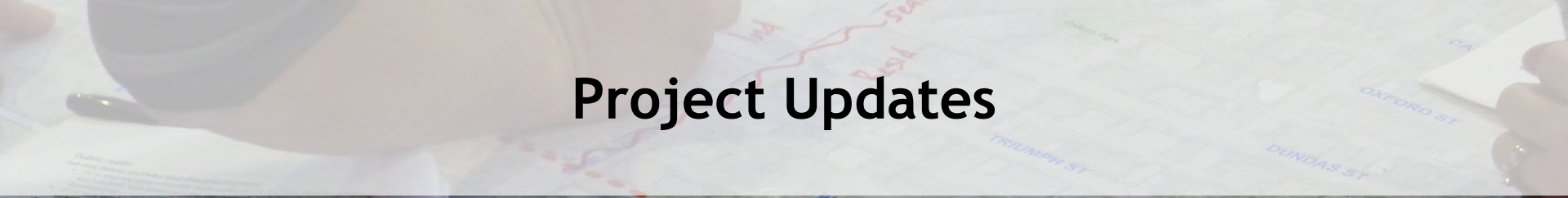
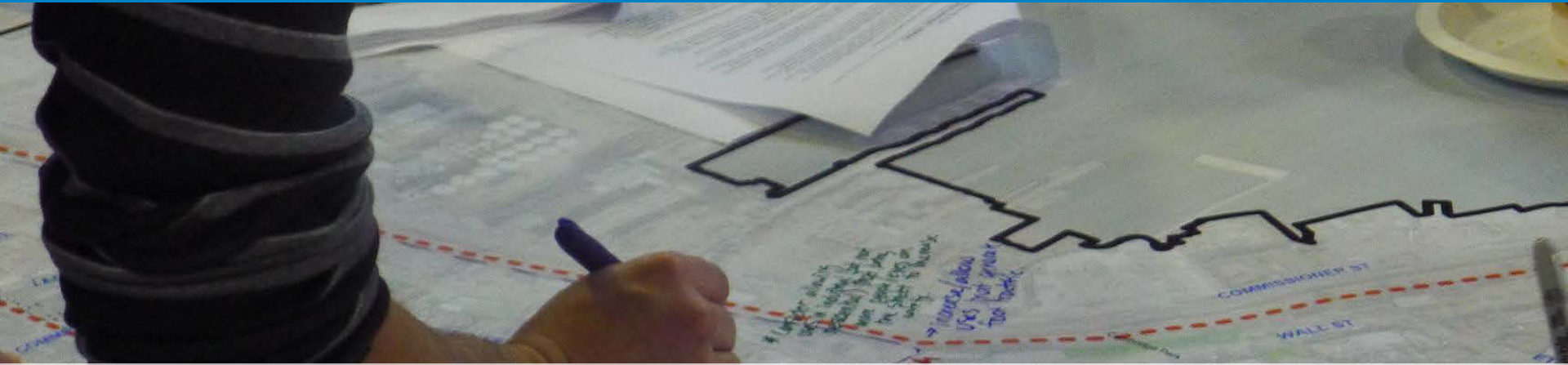
# Thank you and Questions



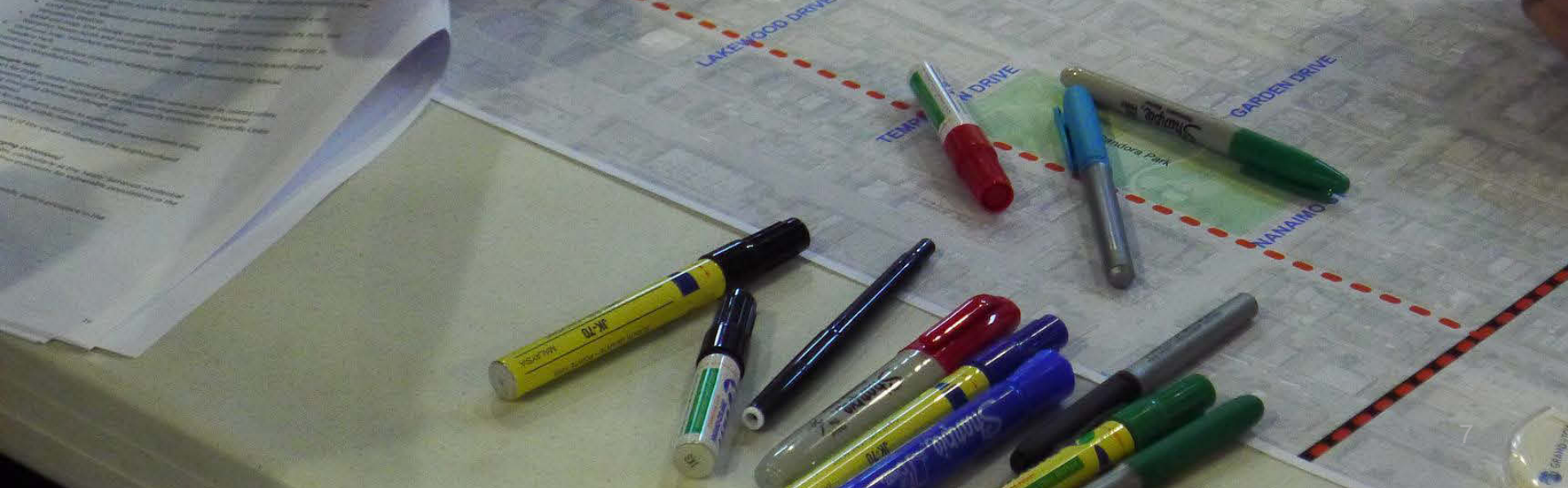
**Break (10 mins)**







## Project Updates





## Commercial-Victoria

- Interim improvements anticipated in late 2018:
  - New signal Victoria & 10<sup>th</sup>
  - Crosswalk on 10<sup>th</sup> in front of station
  - New protected bike lane on south side of 10<sup>th</sup> Ave
  - 10<sup>th</sup> Ave converted to one-way westbound for vehicles
  - New passenger zone 10<sup>th</sup> Ave in front of Station
  - RPP spaces removed from 10<sup>th</sup> Ave
  - Traffic diverters at Commercial Drive
- Long-term improvements to this segment will be identified through redevelopment



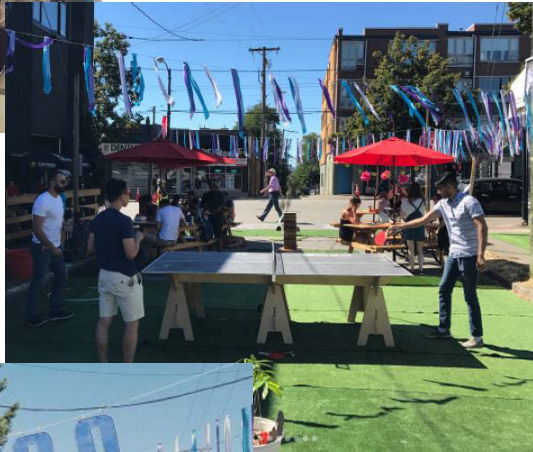
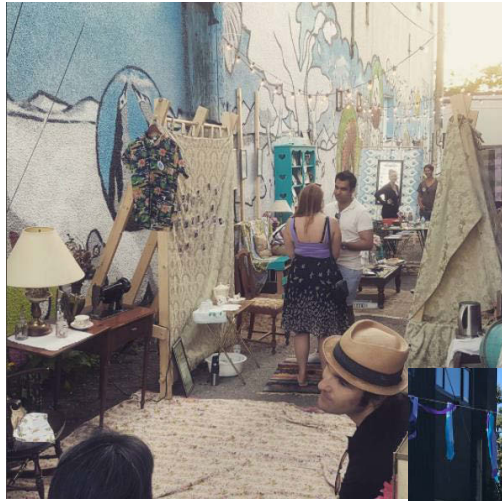
## Grandview-Woodland

- At Salsbury Dr. (corner bulge, improved curb ramps) and Nanaimo St. (right-out only traffic diverter) are underway
- At Woodland (corner bulges, curb ramps) in 2018
- Victoria Dr. curb work is done, median with walking/cycling refuge will be completed once paving is done (Fall 2017)

## Strathcona

- Road closure at Union-Vernon jog in place
- Other Strathcona intersections (including corner bulges, curb ramps, crosswalks at various locations) are anticipated in 2018





- Pop-up events focused on public spaces and placemaking delivered by VIVA Vancouver:
  - Grandma's House
  - Public Disco
  - McSpadden Pop-Up Plaza



# Commercial-Broadway Plaza Exploration

Conceptual rendering of the plaza, located per approved Community Plan policy



Conceptual rendering of the plaza, in proposed alternative location



- GW Plan proposes central public plaza
- City has received an initial inquiry that proposes alternative location for the plaza, over Grandview Cut
- June 8 - City hosted event to gather community input on whether an alternative location should be explored
- 130 people attended - majority did not support considering alternative plaza location
- No rezoning application has been received at this time



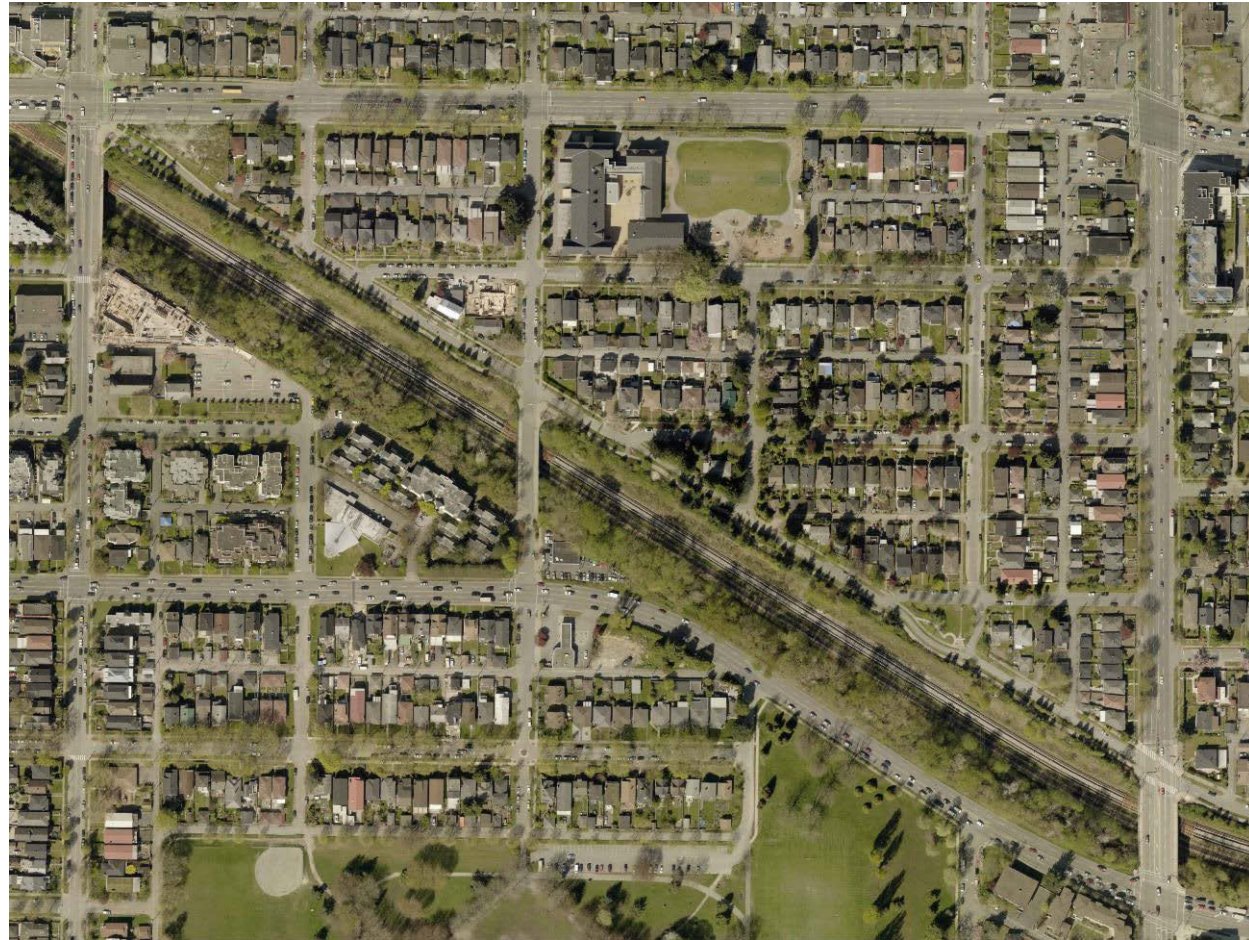
- 4 stakeholder workshops (71 stakeholders); 3 public open houses (876 attendees) in June 2017
- Key concerns and themes:
  - Extending the project to UBC
  - Ensuring ongoing communications and engagement with business and communities
  - Minimizing construction impacts
  - Providing accessible washrooms
  - Planning for intermodal connectivity

- Business engagement
  - June-September 2017, Loading and parking newsletter update
  - Door-to-door outreach and one-on-one conversations
  - Workshop in the Fall with BIA

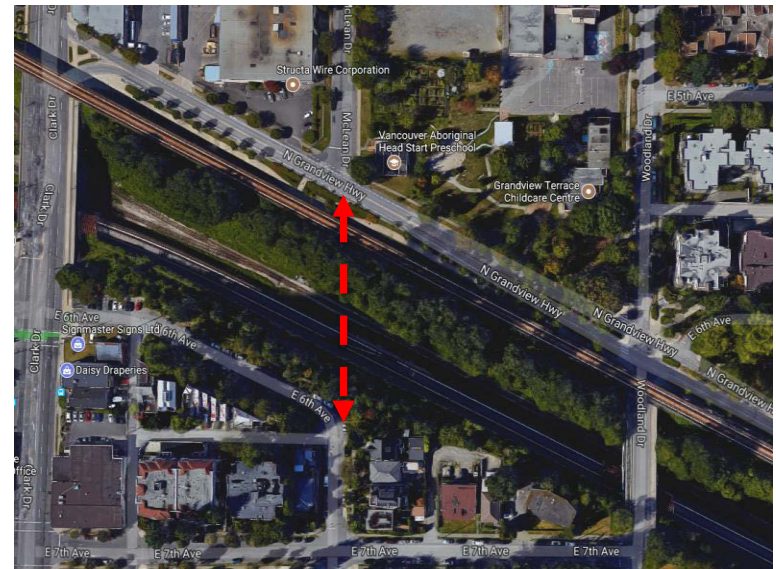




- Meeting with residents - May 2017
- School-related transportation issues
- Pedestrian and bicycle conflicts at Central Valley Greenway
- Recommendation under review



- Building an additional transmission line between Coquitlam and Vancouver (Mt Pleasant Substation), by 2021
- Proposed to cross the Cut at McLean Dr. via a new bridge with a proposed 6m wide walking and cycling deck
- Hydro hosted pop-up open events in late August (Sat Aug 26<sup>th</sup> and Tue Aug 28<sup>th</sup> at N. Grandview Hwy and Woodland)
- More information can be found on the project website [bchydro.com/mnt](http://bchydro.com/mnt)





- **Grandview-Woodland Plan Implementation**
  - Sept 19 Public Hearing
    - Zoning bylaw amendments for changing RT Zoning, rezoning certain areas from RS to RT-5/5N
- **Britannia Renewal Events**
  - Sept 21 (Thursday ) Non-profit housing discussion 6-9pm
  - Sept 23 (Saturday) Britannia site-wide open house 12-4pm
  - Sept 26 (Tuesday) Community Consultation Tent



## Next Steps

- Meeting minutes to be circulated next week; materials online early October
- Next Meeting: December 2017 (date TBD)

- **Reminder** please report back to your respective organizations and share information broadly within networks
- **(new) SAG Coordinator:** Cara Fisher 604-326-4830 or [cara.fisher@vancouver.ca](mailto:cara.fisher@vancouver.ca)

Questions? Comments?

Thank you

GRANDVIEW-  
WOODLAND

