

Grandview- Woodland Neighbourhood Transportation & Parking

**Stakeholder
Advisory Group**

Meeting # 1
November 3, 2016





Introductions

Please tell us the transportation perspective your organization brings to Grandview-Woodland

Residents



Businesses



City Advisory Committees

- Active Transportation Policy Council
- Persons with Disabilities
- Seniors
- Urban Aboriginal Peoples

Community Services



The Kettle Society



Health



Promoting wellness. Ensuring care.



REACH

Community Health Centre

Celebrating nearly 50 years of community health in community hands.

Transportation



City of Vancouver

- Lon LaClaire
Director of Transportation
- Stephanie McNeely
Transportation Engineer
- Andrew Pask
Community Planner
- Lynn Guibault
Team Lead, Public Engagement Lead
- Hailey Steiger-Tang
Planning Analyst

Today's Agenda

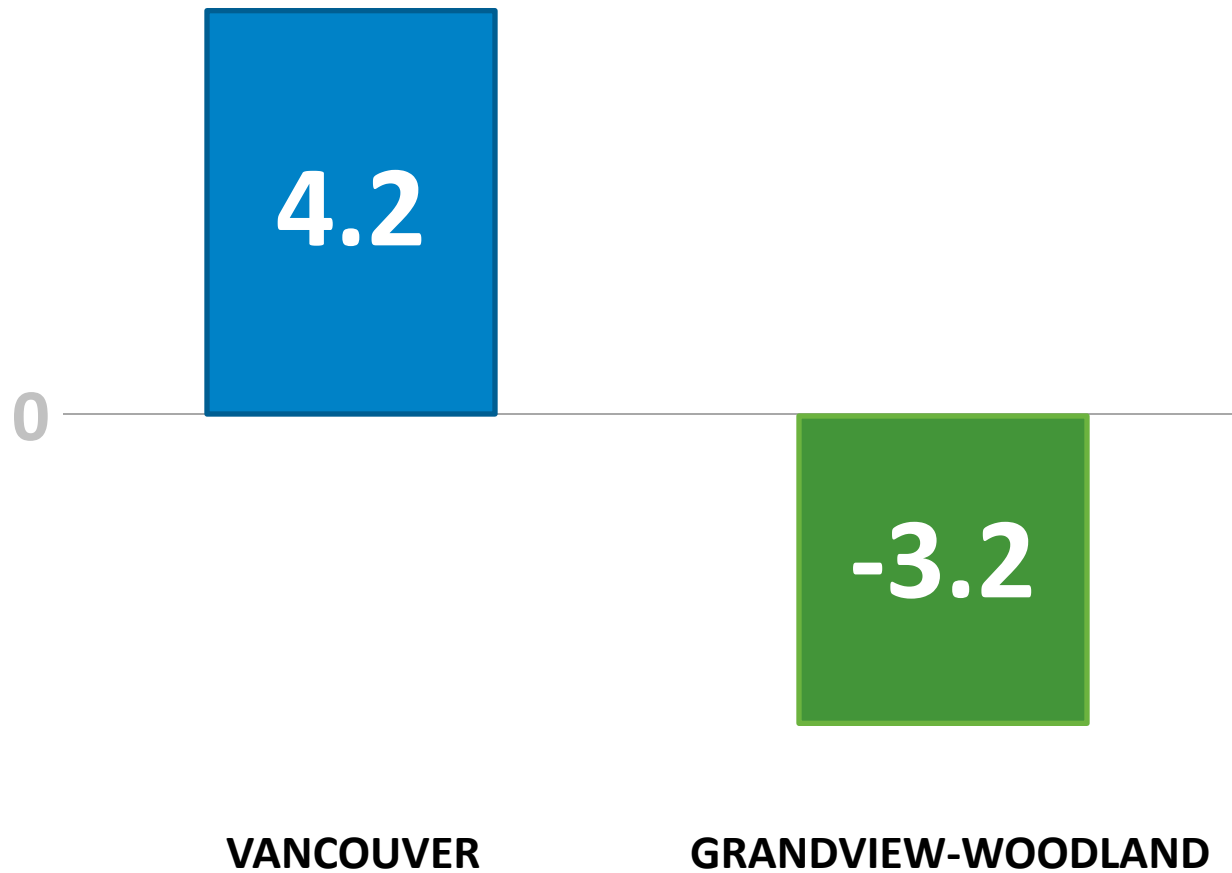
1. Community Plan Overview (10 mins)
2. City Transportation Directions & the SAG (20 mins)
3. Short break / activity (10 mins)
4. Transportation in Grandview-Woodland (20 mins)
5. Project Updates (20 mins)
6. Next Steps & Closing



Grandview-Woodland Community Plan

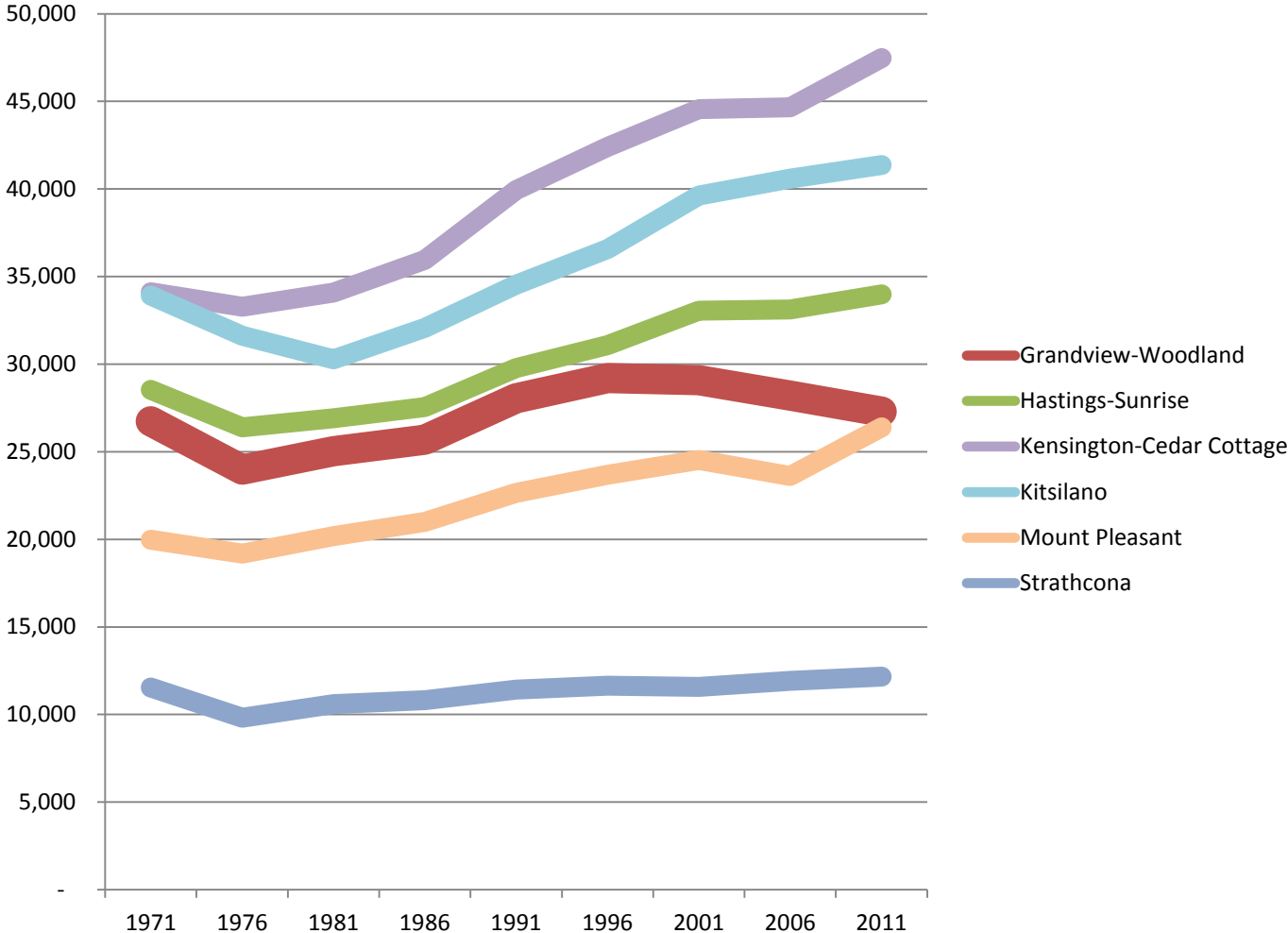
Population change (%)

2011 Census



Population change, neighbourhoods

1971 - 2011 Census



Aboriginal identity

Proportion of census respondents, 2011



VANCOUVER



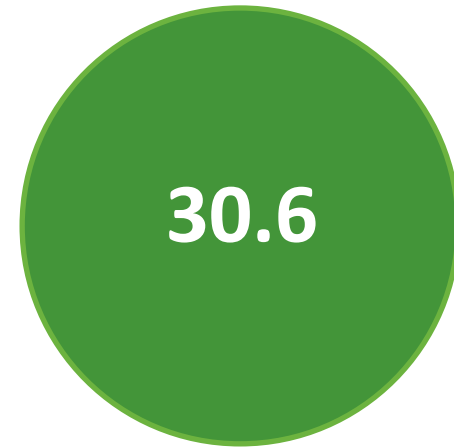
GRANDVIEW-WOODLAND

Proportion of immigrants

2011 National Household Survey



VANCOUVER



GRANDVIEW-WOODLAND

Proportion of low-income individuals

2006 Census



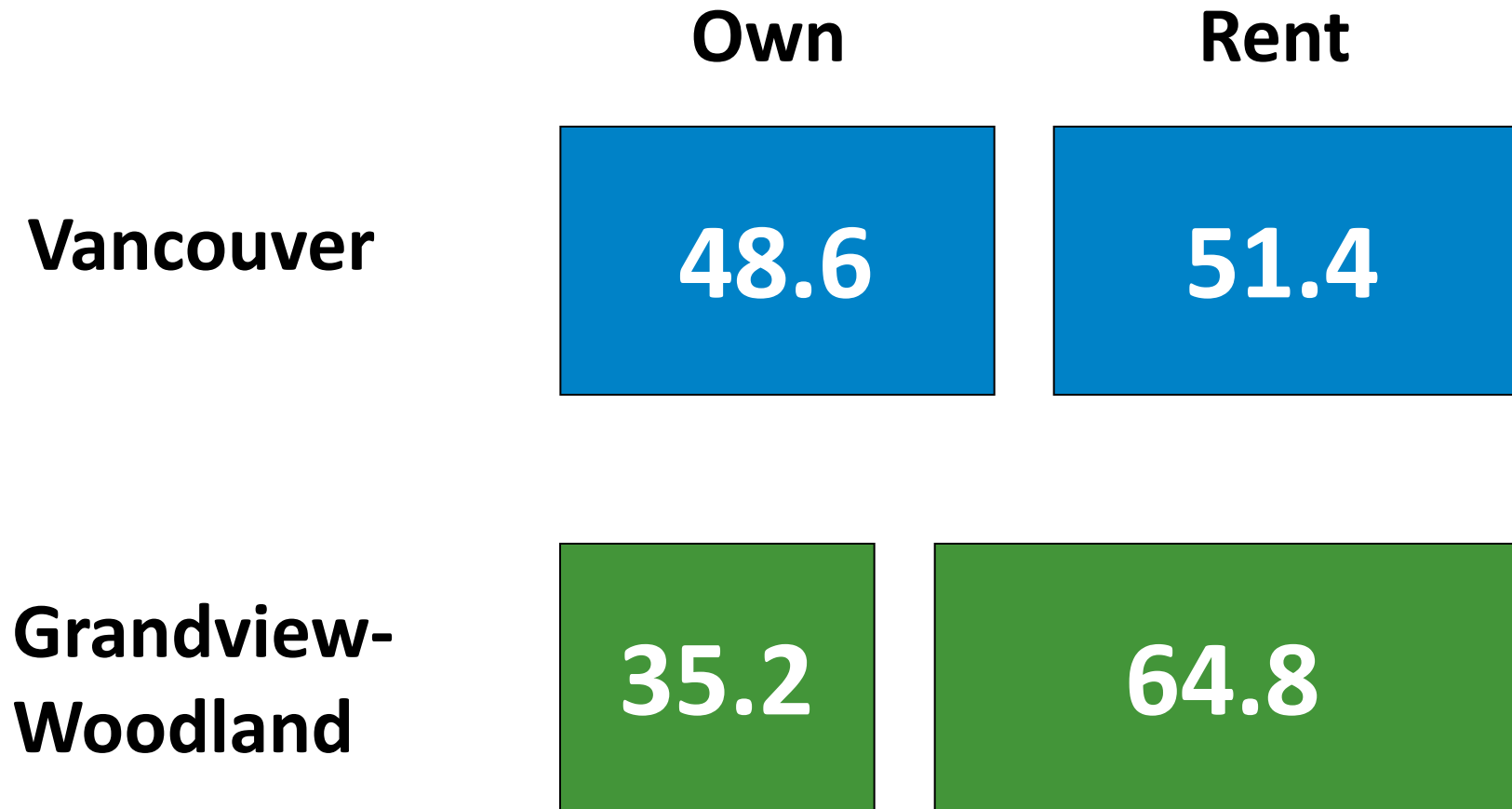
VANCOUVER



GRANDVIEW-WOODLAND

Proportion of owners and renters

2011 National Household Survey



Plan snapshot

- 4+ year planning exercise
- Extensive consultation
 - Citizens' Assembly
 - Sub-area focused workshops
- Provides direction on growth and change over next 30 yrs
- Housing, transportation, heritage, character, community facilities, parks & open space



Grandview-Woodland Community Plan
An inclusive, thriving future for a unique, diverse community

GOALS FOR THE NEXT 30 YEARS:

- AFFORDABLE HOUSING**
4,350 MORE AFFORDABLE HOME OWNERSHIP OPTIONS
- 1,400 SECURED MARKET RENTAL HOMES**
- KEEP THE VIBE OF THE DRIVE**
RETAIN ITS UNIQUE FEEL AND IDENTITY
- MAINTAIN A MIX OF HOUSING TYPES & ADD FAMILY HOUSING**
- PRESERVE HERITAGE & CHARACTER ASSETS**
- COMMUNITY FACILITIES**
RENEWAL OR EXPANSION OF:
ABORIGINAL & SOCIAL FACILITIES
BRITANNIA COMMUNITY COMPLEX
FIREHALL #9
COMMUNITY POLICING OFFICE
- NEW JOB SPACE & HOUSING - AT - BROADWAY/COMMERCIAL STATION PRECINCT**
- TRANSPORTATION**
IMPROVED ROUTES AND SAFETY FOR WALKING AND CYCLING
NEW SIDEWALKS
INTERSECTION SAFETY IMPROVEMENTS
- PRESERVE & RENEW ARTS & CULTURAL SPACES**
- YOUR VOICE**
PUBLIC INPUT HELPED SHAPE THIS PLAN
WE HEARD FROM YOU THROUGH:
85 OPEN HOUSES, WORKSHOPS, MEETINGS, WALKING TOURS
9 QUESTIONNAIRES
THE WORK OF CANADA'S FIRST CITIZENS' ASSEMBLY FOR A COMMUNITY PLAN
- CHILD CARE**
430 NEW CHILD CARE SPACES
- PUBLIC SPACE**
9 IMPROVED PARKS
5 NEW OR IMPROVED PLAZAS

Community Plan

9,500 new people

7,150 new homes

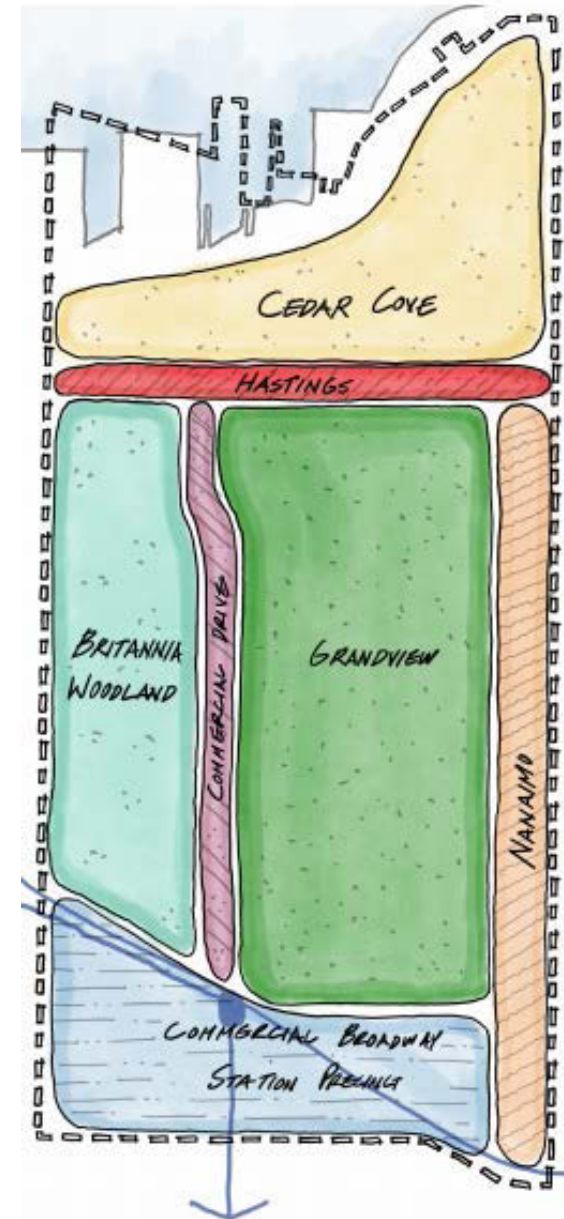
\$795m community amenities

Key tools to protect
existing assets + proactively
manage change



Land use policy snapshot

- Seven key policy sub-areas, including Commercial Drive
- Attention to key “nodes” including Broadway & Commercial, Hastings St.
- Protection of existing affordable rental housing in apartment areas
- New social and market housing
- Protection of character streetscapes
- New opportunities for home ownership
- Enhanced commercial areas
- Retention of existing industrial areas



Commercial Drive

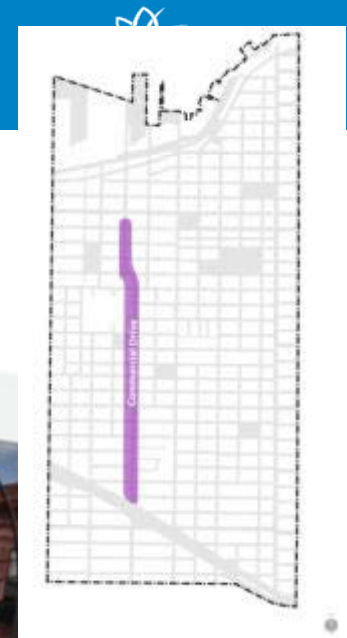






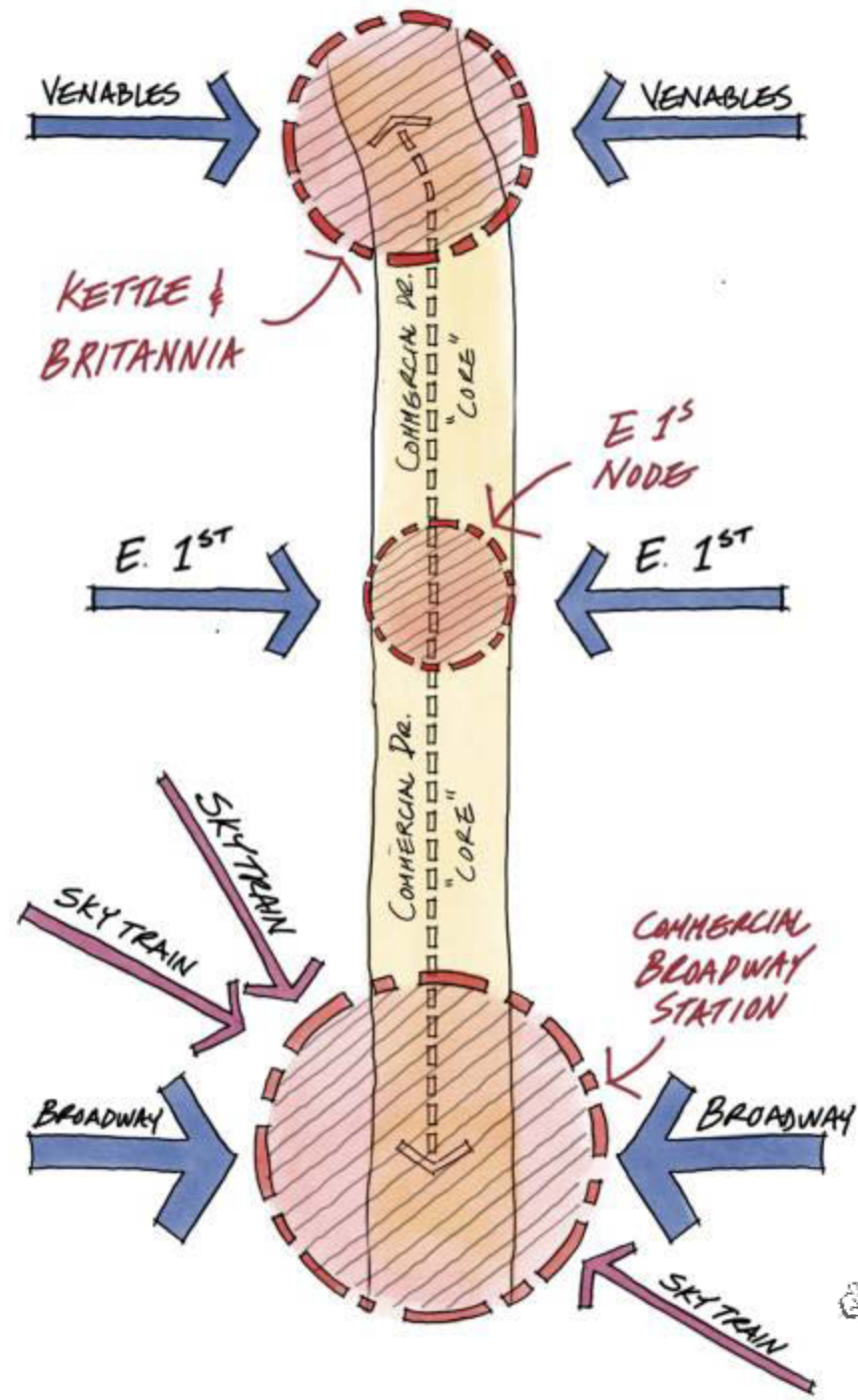
Commercial Drive

- Keep the “Vibe of the Drive”
- Support local, independent business – and character of the street
- Improved walking and biking through “Complete Street” design
- Renew Britannia Community Centre
- Focus change on key nodes; retain existing zoning for 80% of core area



Commercial Drive

- Focused areas of change



Commercial Drive

- Sub-Area: E Pender to Grandview-Cut



North End

- Adanac to E Pender



Core Area

- E 5th to Adanac

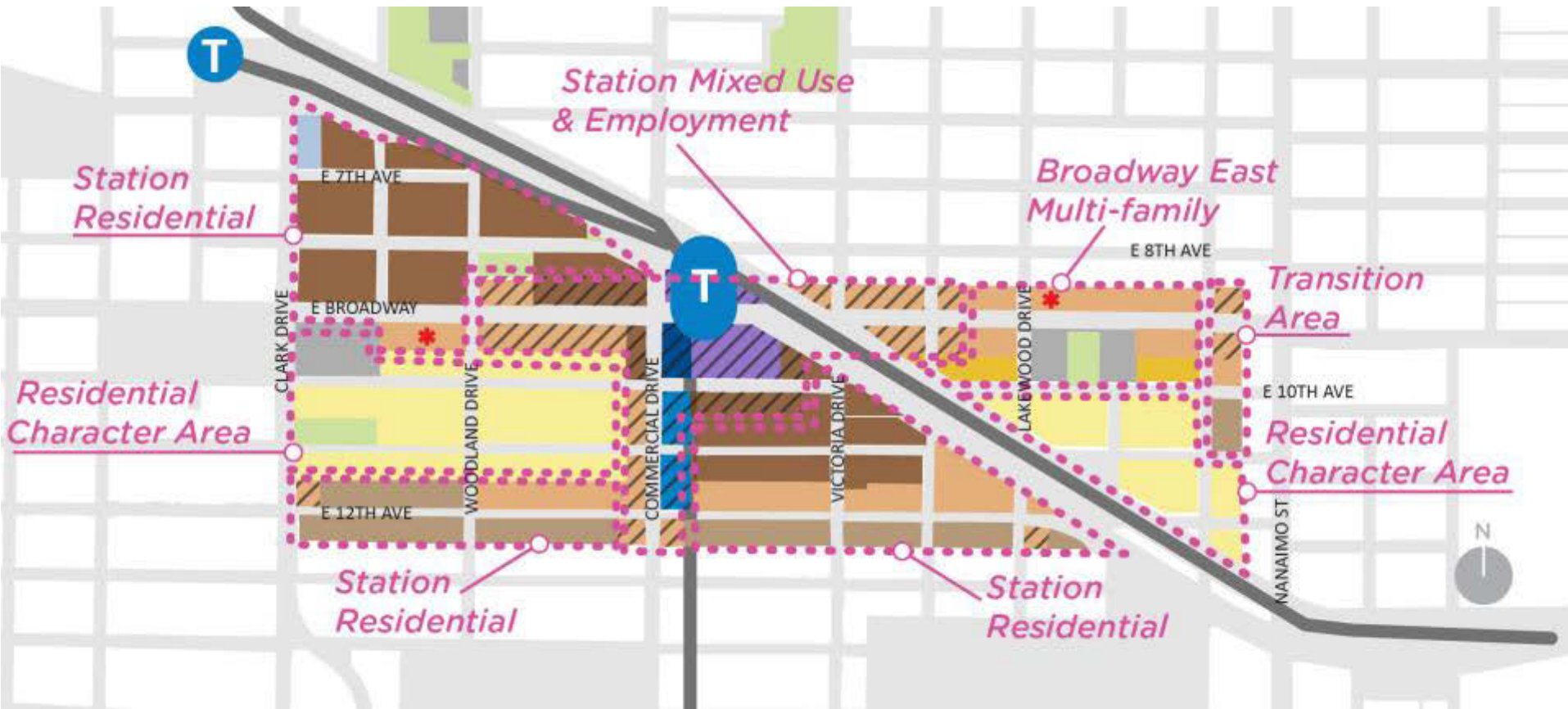


South End

- E 5th to Grandview Cut



04.8
Broadway & Commercial



Station Mixed-Use & Employment



A close-up photograph of a green utility pole. On the pole, there is a white rectangular sign with a black border. The sign contains a black silhouette of a hand pointing to the left, a black silhouette of a person walking, and a black arrow pointing to the right. Below the sign is a yellow circular sensor with a silver center. The background is a blurred street scene with trees and buildings.

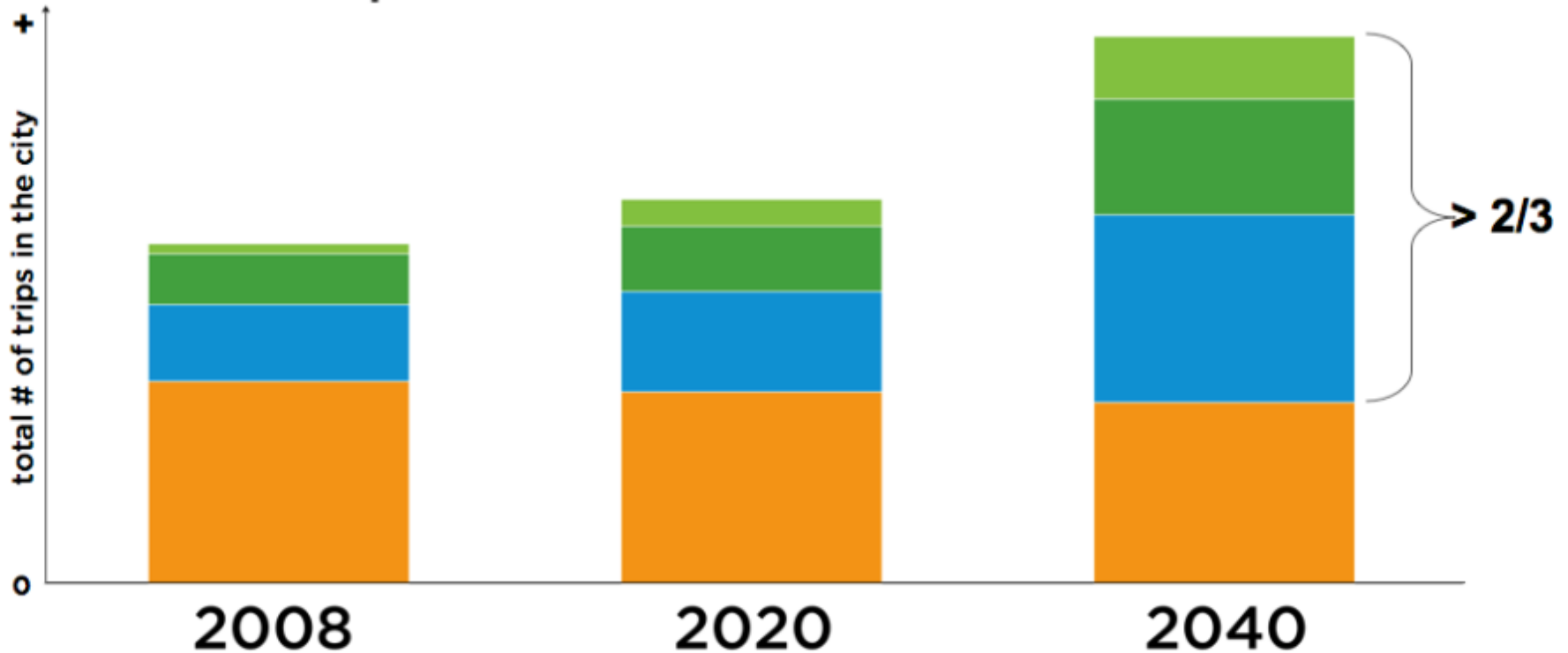
Background - Transportation 2040 & Project Updates

Setting the vision & direction for transportation in Grandview-Woodland:

- Move towards **'Vision Zero'** and **improve transportation safety**
- Use **land use** to support shorter trips & sustainable transportation choices
- Making **walking & cycling** safe for all ages & abilities
- Support **transit improvements** to increase capacity and better service
- Manage the road network effectively & **make it easier to drive less**
- **Support movement of goods and services** while managing environmental & neighbourhood impacts

PLAN TARGETS

Transportation 2040



40% of all trips on foot, bike, or transit

at least **half** of all trips on foot, bike, or transit

at least **two-thirds** of all trips on foot, bike, or transit

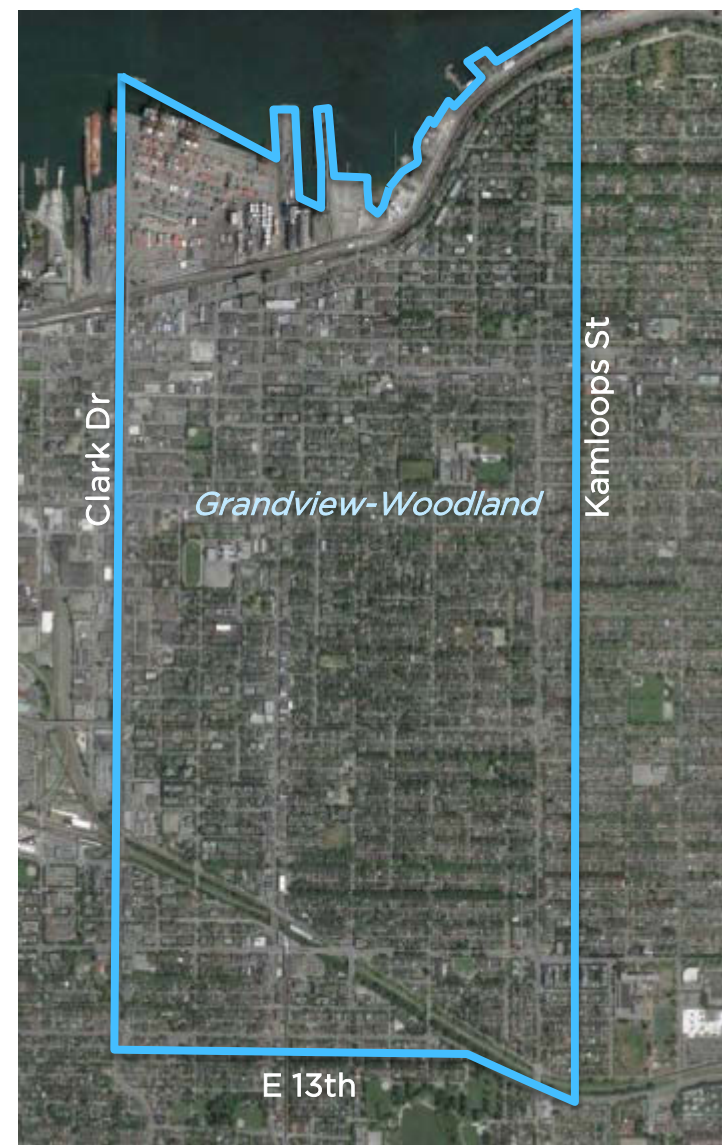
■ Motor Vehicle
 ■ Transit
 ■ Walk
 ■ Bike

For all trips originating in the City of Vancouver.
 2008 data source: TransLink Trip Diary Survey. Trips by commercial drivers (couriers, taxis, trucks, and bus drivers) not included.

Transportation 2040 has actions specifically for Grandview-Woodland:

- Improve the **walking experience** along commercial shopping streets
- Expand the **ages and abilities cycling network** to the **Commercial Drive** corridor
- **Broadway Subway extension** to UBC
- Provide limited-stop/rapid transit service along **Commercial Drive and Hastings Street**

- As part of ongoing implementation of transportation directions, Council directed a Stakeholder Advisory Group be established:
 - As a **forum for staff to update** key stakeholder organizations on implementation of transportation items emerging from the Community Plan
 - To **gather stakeholder input** to further inform neighbourhood transportation planning
- Ensures continual updates and engagement as projects roll out
- Until December 2018



- Projects anticipated in Grandview-Woodland :
 - Commercial Drive Complete Street (2016/2017)
 - 10th Ave Bikeway Corridor Spot Improvements (2016/2017)
 - Union-Adanac Corridor Spot Improvements (2017)
 - Transportation study for 'the Triangle' (TBD - 2017)
- Projects **adjacent to** Grandview-Woodland
 - False Creek Flats Local Area Plan
 - Northeast False Creek
 - Centerm Expansion Project
- **Regional** projects
 - Transit investment i.e. TransLink 10-Year Investment Plan

- **City of Vancouver role:**

- Inform and educate about upcoming projects
- Gather input from members to inform transportation planning processes in Grandview-Woodland
- Prepare meeting materials and communications

- **Stakeholder Advisory Group members' role:**

- Provide input on updates presented
- Report back to your respective organization
- Share information broadly within the community / your networks



Moving forward, how will we work together?



Grandview-Woodland & Transportation

- One of the oldest neighbourhoods in Vancouver, an original ‘streetcar suburb’
- Higher percentage of walking, cycling and transit use (54%) than City average (47%)
- Local walking, cycling, and transit networks are integral part of city-wide systems
- Anchored by region’s busiest transit interchange
- Arterials serve local business, the Port and adjacent industrial areas

Key transportation issues identified within the planning process:

- Neighbourhood walkability, provision of cycling infrastructure
- Public realm concerns (i.e. narrow sidewalks)
- The experience of key arterial streets (Broadway, Nanaimo, Hastings)
- Transit service & capacity
- Traffic calming
- Traffic safety, on-street parking and goods movement

- Improve safety for all road users at collision hotspots (Commercial Drive hotspots, 1st Ave, Grandview Cut, and East 12th)



- Develop a vision for the Drive as a complete street, and consider complete street opportunities elsewhere
- Public space enhancements (i.e. seating, patios, bus stops) on destination streets such as Commercial, Hastings, & Nanaimo
- Create new plazas (i.e. Broadway-Commercial) and shared spaces (i.e. 10th & Victoria)
- Small-scale place-making projects in underutilized areas



- Improve sidewalk network connectivity and accessibility
- Improve the walking experiences on busy streets and on routes to school
- Support new and improved public spaces to encourage more walking

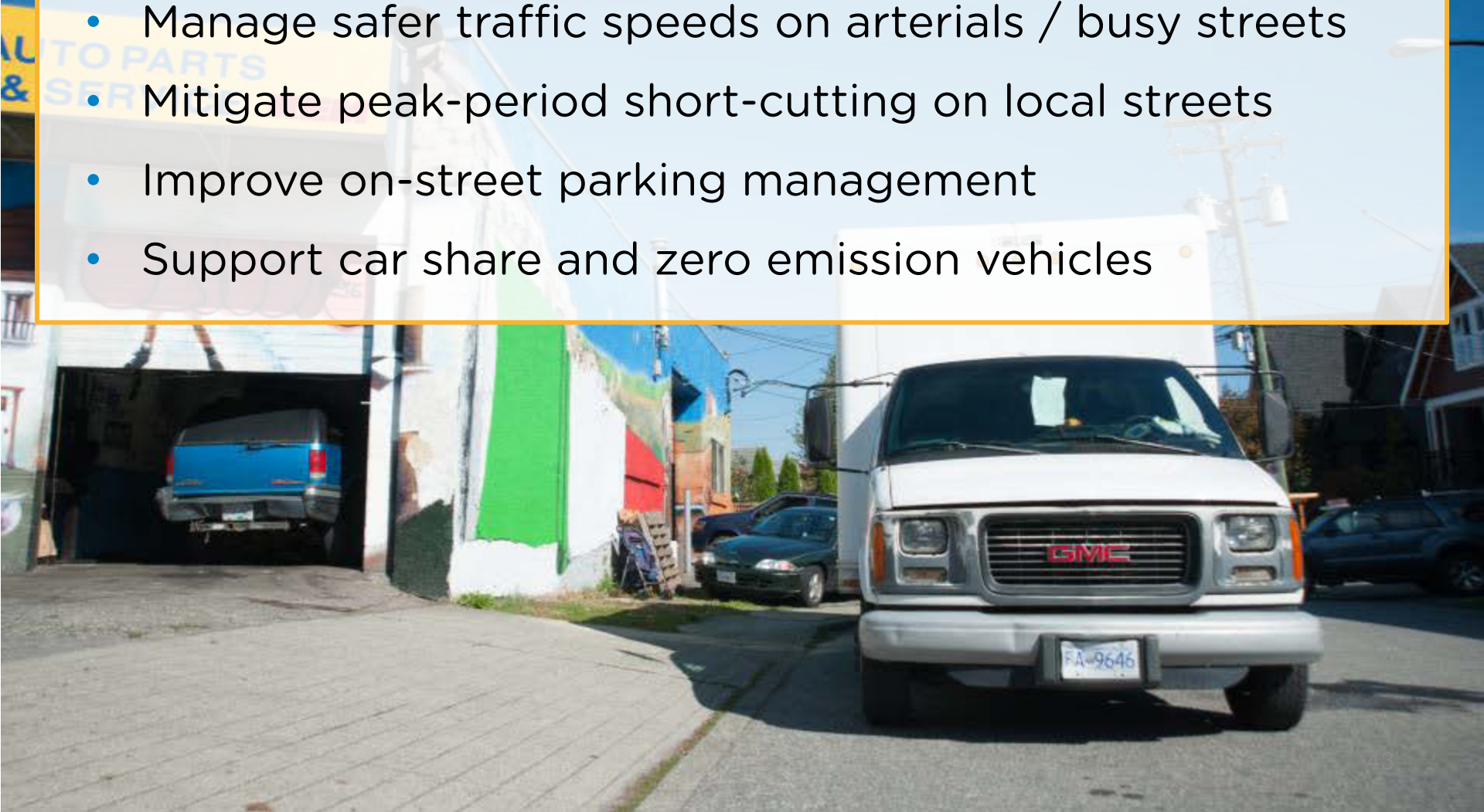
- Maintain and enhance a cycling network for all ages & abilities (upgrade existing and consider new routes)
- Better bike parking, & integration with transit
- Expand public bike share into Grandview-Woodland



- Support TransLink to support high-speed transit (i.e. Broadway Subway extension, Hastings B-Line) and improve reliability of local transit service (i.e. # 20)
- Improve bus stop waiting areas and the Commercial-Broadway Station area



- Maintain effective truck network on Clark/Knight
- Manage safer traffic speeds on arterials / busy streets
- Mitigate peak-period short-cutting on local streets
- Improve on-street parking management
- Support car share and zero emission vehicles





Where are we now?
Project Updates

Commercial Drive Complete Street

- **Phase 1 Fall 2016**
 - Listen & Learn, ideas and information
 - Oct 20 & 22 Open Houses
- **Phase 2 Winter/Spring 2017**
 - Design options & refine design concepts
- **Phase 3 Spring/Summer 2017**
 - Design recommendations

Project Goals:

- Increase safety & comfort for all types of transportation, all ages & abilities
- Allow convenient access to shops & services
- Maintain & enhance vitality of the street
- Ensure local businesses continue to thrive

Narrow Section – North of Graveley

- Opportunity – Spot Improvements and Minor Changes
 - Sidewalk and public realm enhancements
 - Potential Mobi bike share expansion
 - Bus stop changes
 - Review parking restrictions



Wide Section – South of Graveley

- Opportunity – Significant Improvements
 - Sidewalk and public realm enhancements
 - Protected bike lane
 - Potential Mobi bike share expansion
 - Bus stop changes and expanded waiting area



Phase 1 Fall 2016

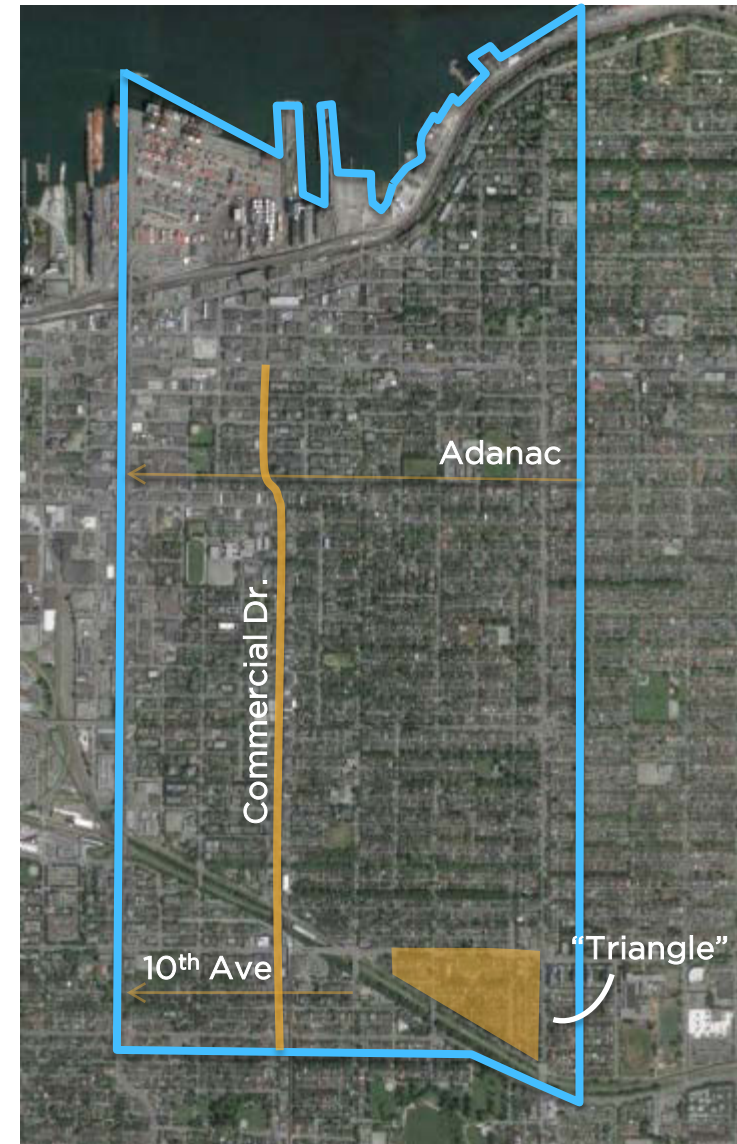
- **Intercept Survey**
 - Conducted August 25 - 30th
 - 670 individuals surveyed
- **Goods Movement & Business Survey**
 - 423 surveys delivered, ~160 received
- **Open Houses**
 - Oct 20 (Thursday) 150 attendees
 - Oct 22 (Saturday) 160 attendees
- **Online survey, Oct 21 - Nov 6**

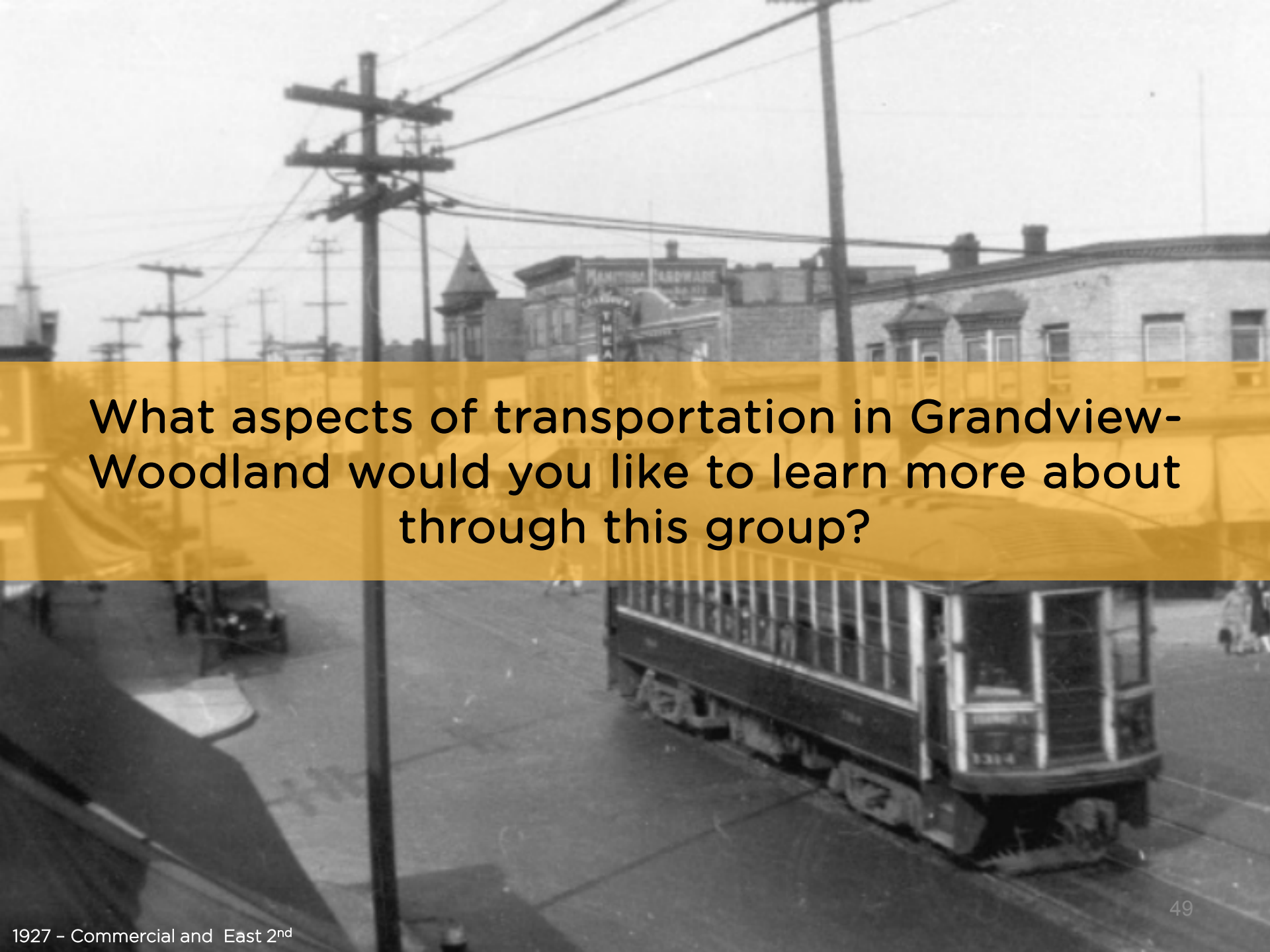


Please share: vancouver.ca/commercial-complete-street

Upcoming

- **Commercial Drive - Phase 2 design options**
 - Focused workshop to be planned for SAG (early 2017)
- **10th Avenue Bikeway Upgrades**
 - Opportunity for improved public space at 10th/Victoria
 - Open Houses Nov. 2016
- **Union-Adanac Bikeway Spot Improvements**
 - Presentation to GWAC Dec 2016
 - Consultation January 2017
- **Study for 'the Triangle' (TBD 2017)**





What aspects of transportation in Grandview-Woodland would you like to learn more about through this group?

- **Schedule** - Quarterly (Feb, May, Sept, Dec)
- **Location** - Central & accessible (i.e. Britannia)
- **Times** - weekday evening, 2-3 hours max
- **Attendance** - please identify an alternate from your organization if unable to attend a session
- **Meeting Info** - City to prepare & distribute agendas, minutes & materials.
- **SAG Coordinator: Hailey Steiger-Tang**
 - hailey.steiger-tang@vancouver.ca, 604-873-7742

Have we missed anything?

- **Next Steps:**

- November 2017: Distribution of meeting materials
- January or Feb 2017: Commercial Drive Complete Street workshop for SAG
- February Meeting 2017: Date to be confirmed shortly

- **Reminders**

- Please remember to report back to your respective organizations and share information broadly within networks regarding the SAG and upcoming projects

Questions? Comments?

Thank you

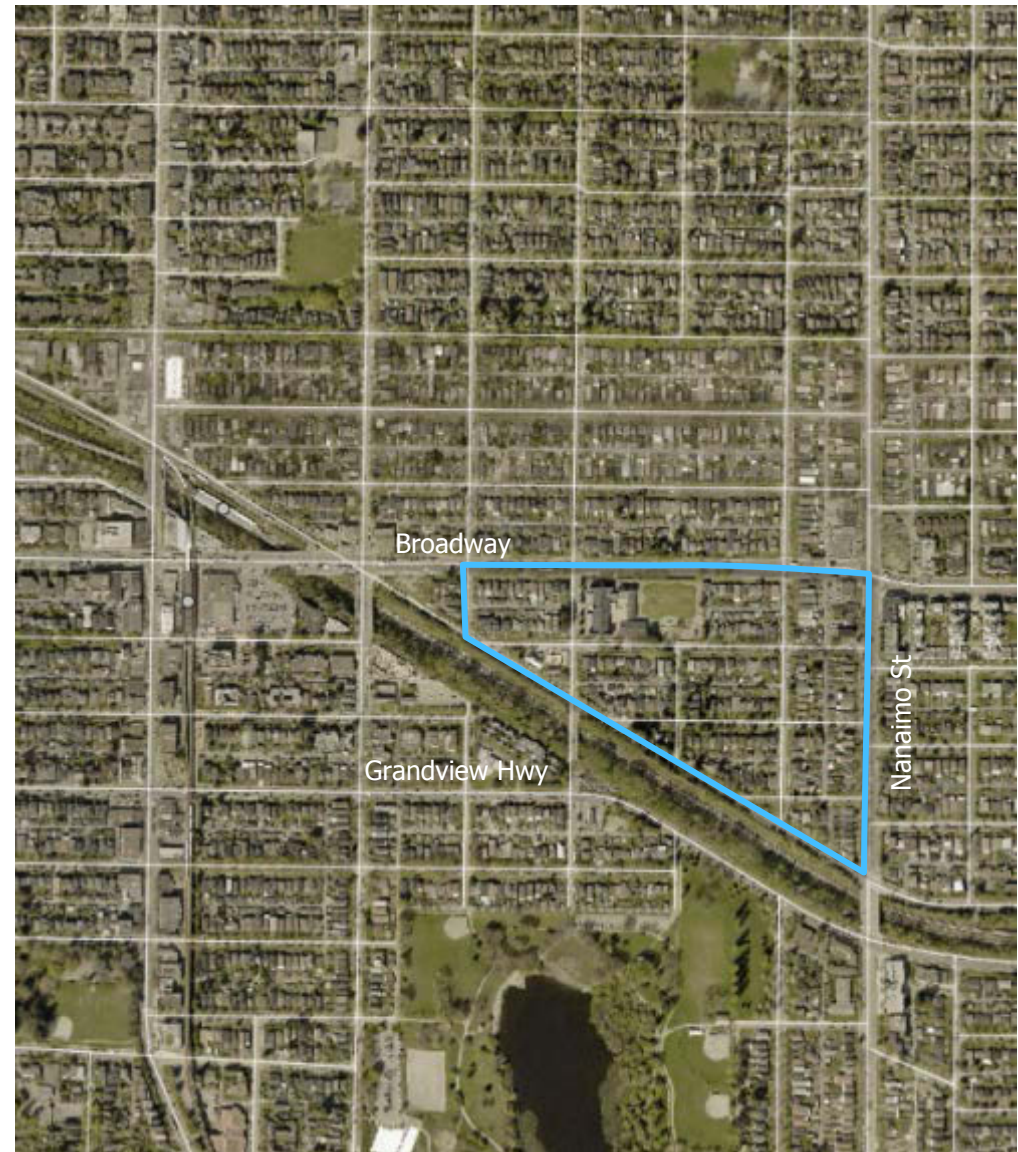


A detailed street map of the Grandview-Woodland neighborhood in Vancouver. The map shows a grid of streets including William Street, Napier Street, Parker Street, and Commercial Drive. Key landmarks such as Grandview Park, East Side Family Place, Britannia Elementary School, and Britannia Community Centre are highlighted. A red line indicates the Georgia Corridor. A blue box with an upward arrow and the text 'You are here' is positioned on Commercial Drive. A red box with a walking icon and the text 'Triangle West' is located at the bottom right of the map.

GRANDVIEW-
WOODLAND

Extra Slides

- “The Triangle” – bounded by Broadway, Nanaimo, Grandview Hwy, and Semlin
- Undertake a **traffic management study** to identify any additional transportation-related or traffic calming improvements that may be needed in order to accommodate land use changes contained in the Plan



Extra Slide: G-W Community Boundary

Grandview-Woodland Boundary

- Clark Drive
- Kamloops street
- East 13th

