

Grandview- Woodland Neighbourhood Transportation & Parking

Stakeholder
Advisory Group

Meeting # 2
February 23, 2017





Introductions



- Grandview Woodland Area Council
- East Village / Hastings North BIA
- Commercial Drive Business Society
- Italian Day Festival
- ISS of BC
- The Kettle Society
- Kiwassa Neighbourhood House
- Vancouver Coastal Health
- REACH Community Health Centre
- TransLink
- Streets for Everyone
- BEST
- HUB
- Advisory Committees:
 - Persons with Disabilities
 - Seniors'
 - Active Transportation
 - Urban Aboriginal Peoples

City of Vancouver

- Dale Bracewell, Manager, Transportation Planning
- Stephanie McNeely, Transportation Engineer
- Kathleen Corey, Urban Space Designer, Street Activities Branch
- Hailey Steiger-Tang, Planning Analyst

Today's Agenda



- 6:30 pm Intros & General Updates
- 6:40 pm Project Updates
- 7:10 pm Neighbourhood Transportation Discussion
- 7:30 pm Break
- 7:45 pm Public Space/Public Realm Opportunities
- 8:15 pm Closing & Next Steps

A vertical green utility pole stands in the center of the frame. It has a white rectangular sign with a black border. The sign is divided into two sections: the top section shows a black silhouette of a hand pointing to the left, and the bottom section shows a black silhouette of a person walking with a right-pointing arrow below it. Below the sign is a yellow circular sensor with a silver center and four screws. The background is a blurred city street with trees and buildings.

General Updates

- Welcome to new members
- Presentation to Urban Aboriginal Peoples' Advisory Committee re: SAG (Jan 16)
- SAG website now live
 - www.vancouver.ca/gw-transportation-advisory-group
 - Includes the presentations, minutes, background on Council direction, membership, and links to relevant project sites



Project Updates

- Establishing a complete street on Commercial Dr. is a policy direction of the G-W Community Plan
- Project goals include increasing safety and comfort for people walking, cycling, driving, and taking transit
- Workshops and open houses in Fall 2016. Heard:
 - Importance of Commercial Drive as a street/place
 - Lots of opportunities for better walking/cycling/public realm
 - Lots of concerns about impacts to street, parking, etc.
 - Potential for better transit
- Next Steps - Conceptual design development, modelling, stakeholder engagement

Highlights of Fall 2016 Consultation Events:

- Since launching the project in fall 2016, we have heard from community members through events, online surveys, telephone calls, and emails:
 - 928 Surveys received
 - 305 Open house attendees
 - 157 Business and goods movement surveys received
 - 10 Business/commercial property owners attended drop-in event
- Survey results will be available on the project website soon

10th Avenue Corridor - Commercial to Victoria



- Draft interim design presented at public open houses November 2016
 - Design adjusted due to feedback received
- Planned interim changes to be presented to Council Spring 2017
- Long-term changes to be developed in conjunction with adjacent development

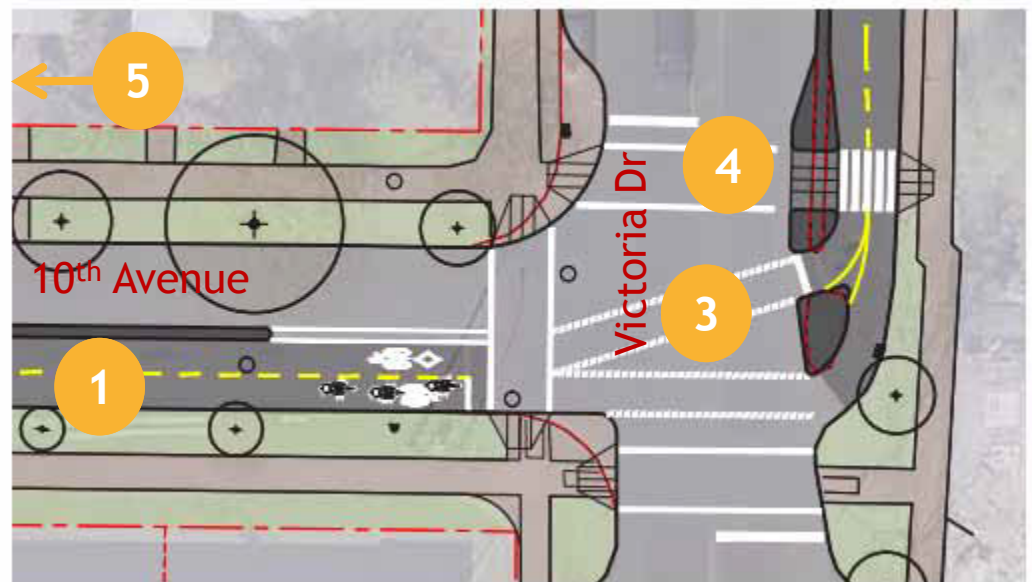
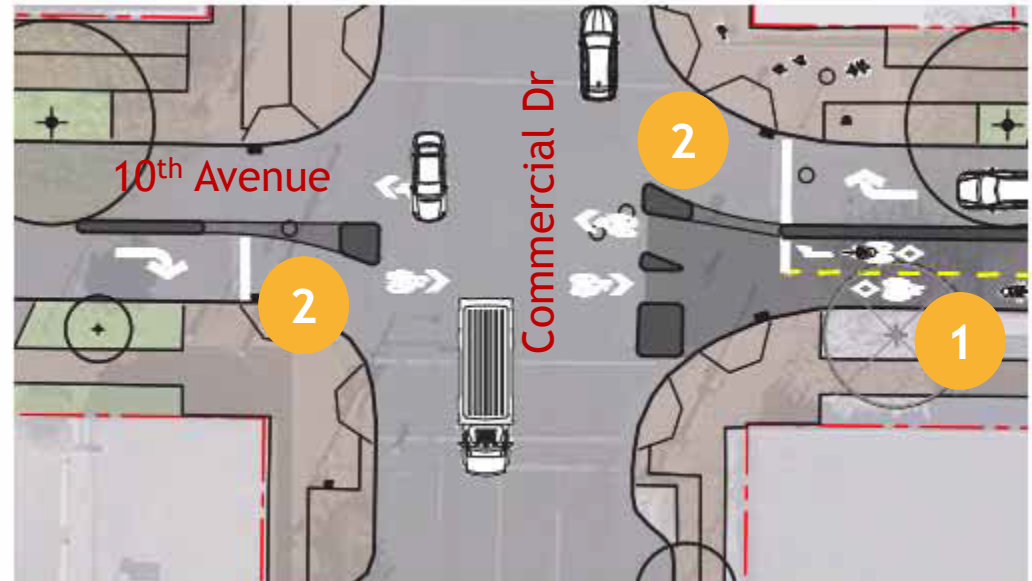


10th Avenue Corridor - Commercial to Victoria



Key Draft Interim Design Elements

- 1 Between Victoria & Commercial, 10th Ave converted to one-way westbound, two-way protected bicycle lane added
- 2 Improved pedestrian safety due to right-out turn restrictions @ Commercial
- 3 New signal @ Victoria/10th
- 4 Improved crosswalks on three sides
- 5 Westbound vehicles on 10th able to access Safeway



Union-Adanac Corridor



Proposed spot improvements presented at public open houses in January 2017.

Improvements to address existing safety concerns and to increase comfort for people walking & cycling. Includes:

- **Adanac @ Victoria** Bike permeable traffic median, improved pedestrian crossings, better lighting
 - **Adanac east of Nanaimo** Traffic diversion
- Staff reviewing feedback and considering adjustments
- Residents to be updated in next couple months



Victoria @ Adanac



Millennium Line Broadway Extension



- Existing transit service insufficient on Broadway.
- Broadway is home to:
 - busiest bus route in Canada, USA
 - largest hospital in Western Canada
 - largest university in Western Canada
 - second largest job centre in British Columbia
- Phase 2 of rapid transit to UBC to be delivered within 30 years

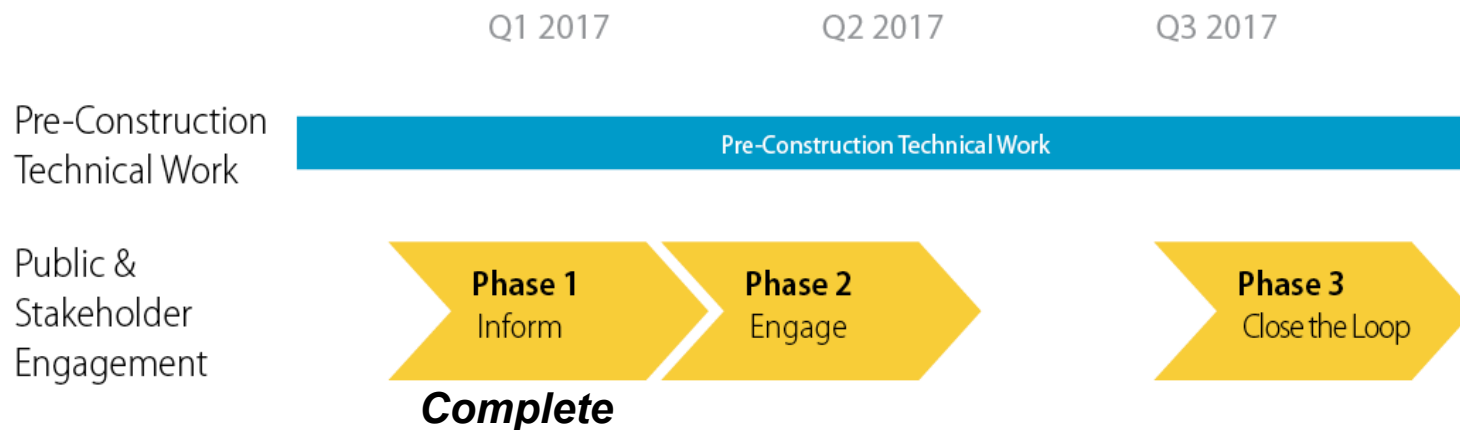


- 6 km tunneled under Broadway
- 6 underground stations at major intersections
- Full underground integration with Cambie/Broadway Station

Millennium Line Broadway Extension

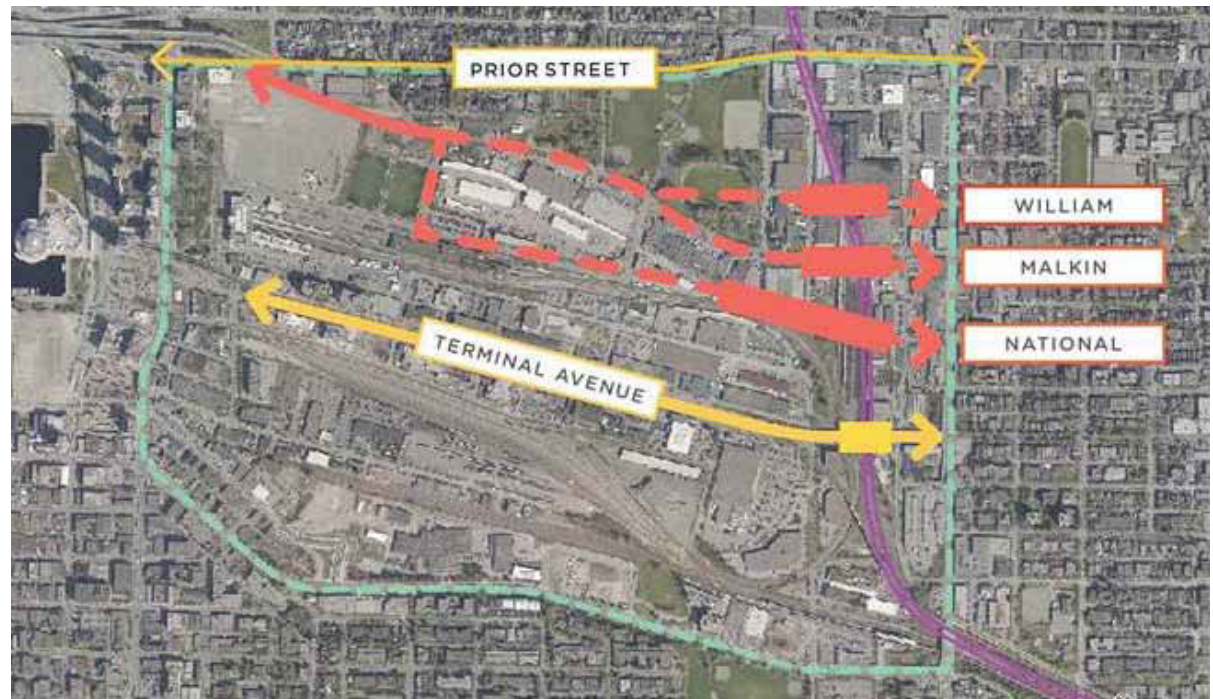


- Currently seeking project funding from the provincial and federal governments
- With funding, construction could begin as early as 2019 with an expected duration of 5 to 6 years.
- Three open house events in late January and early February sought to provide a high level update on the project. Two more opportunities to get involved are planned for this year



False Creek Flats Local Area Plan

- Open houses (January) and surveys (February) on draft plan
- Final plan going to Council in early 2017
- Alignment still being confirmed for east-west arterial road through the Flats connecting to Clark Drive - William Street being currently explored with Park Board (in addition to Malkin & National)
- Next round of engagement opportunities likely in May/June



Neighbourhood Transportation



- At our first meeting, topics of interest included:
 - Neighbourhood travel patterns vs. regional traffic short-cutting through Grandview-Woodland neighbourhoods
 - Issues of speeding and traffic calming
 - Neighbourhood walkability & accessibility
 - Public spaces and places

- As Vancouver grows, increased demands are placed on the transportation network
- Congested arterials sometimes result in motorists cutting through local neighbourhoods
- When local traffic patterns shift, concerns often raised over safety and neighbourhood quality of life
- Significant program of traffic calming has been delivered in Grandview-Woodland over past two decades

What's involved to assess local transportation concerns?



Review community plan policies for transportation directions



Examine proximity to key destinations (schools, seniors, commercial, centres)



Tech. assess data/volumes, collisions, traffic/parking regs, upcoming development



Examine road infrastructure/network, and what is warranted (permitted)



Consider range of solutions e.g. infrastructure, programs, cost considerations

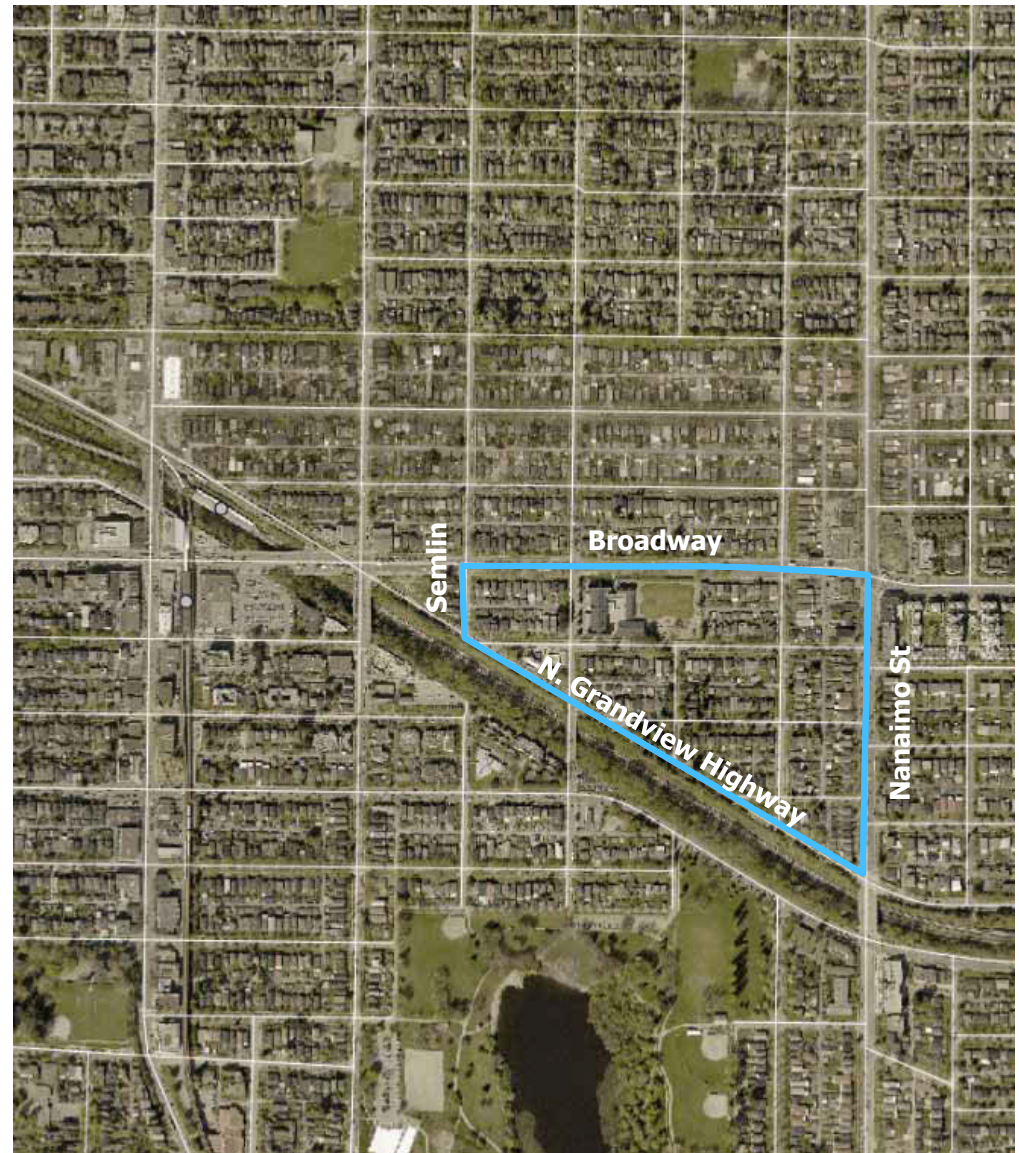


Consider implementation along with other city-wide priorities and budgets

Neighbourhood Transportation

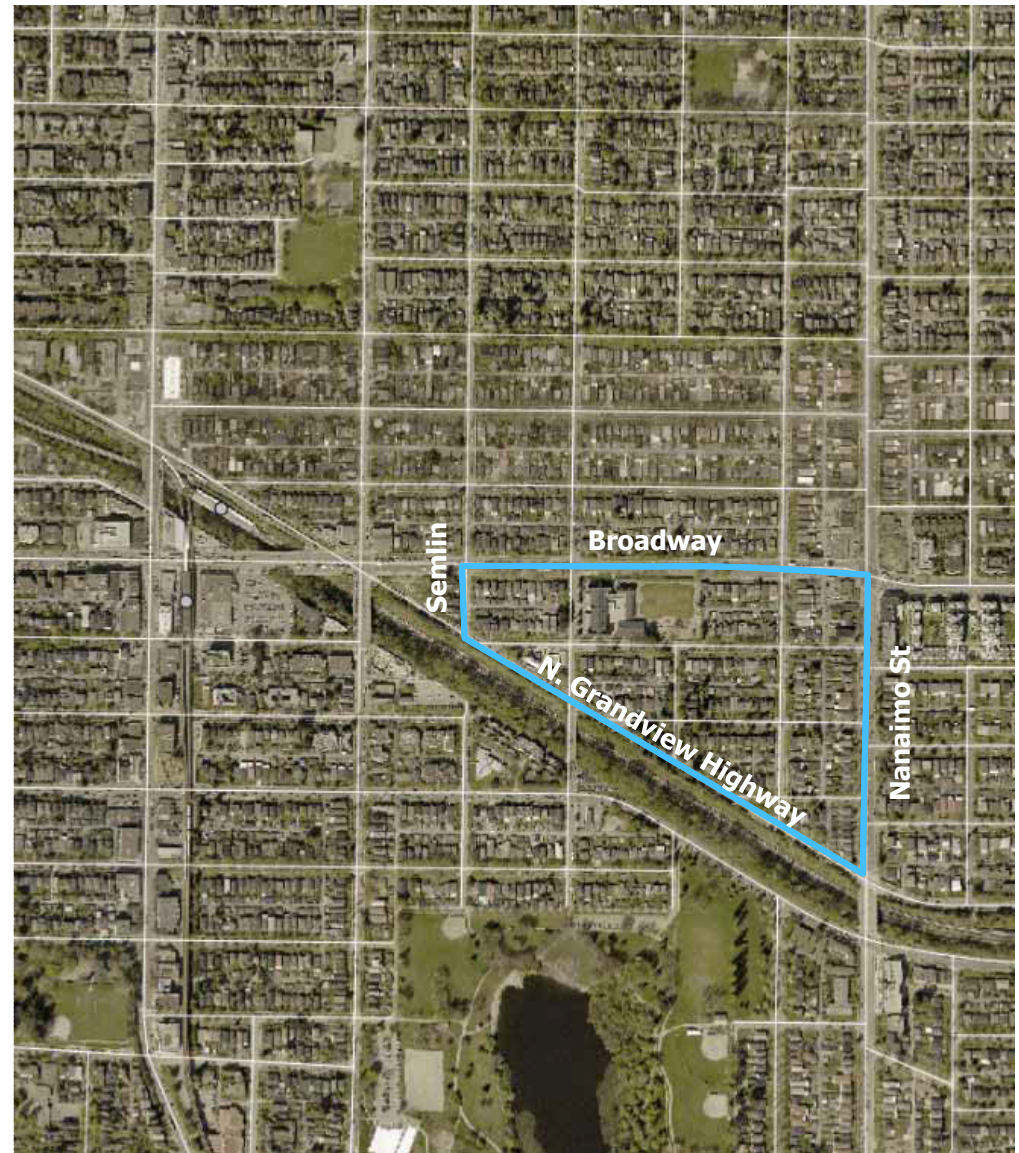
Local process:

- Broadway Triangle residents concerned re:
 - Traffic and parking implications of future land uses
 - Existing school traffic/parking issues, pedestrian and cyclist safety, and wayfinding through neighbourhood
- Council direction: Traffic management study to identify transportation-related and/or traffic calming improvements that may be needed in order to accommodate land-use changes



Broadway Triangle

- Upcoming:
 - Engage with residents to review concerns
 - Assess existing vs. future traffic conditions (as per changing land use)
 - Review existing controls and measures in place, recent school travel planning findings
 - Assess range of potential solutions
 - Report back to the community and to SAG





Break (15 mins)



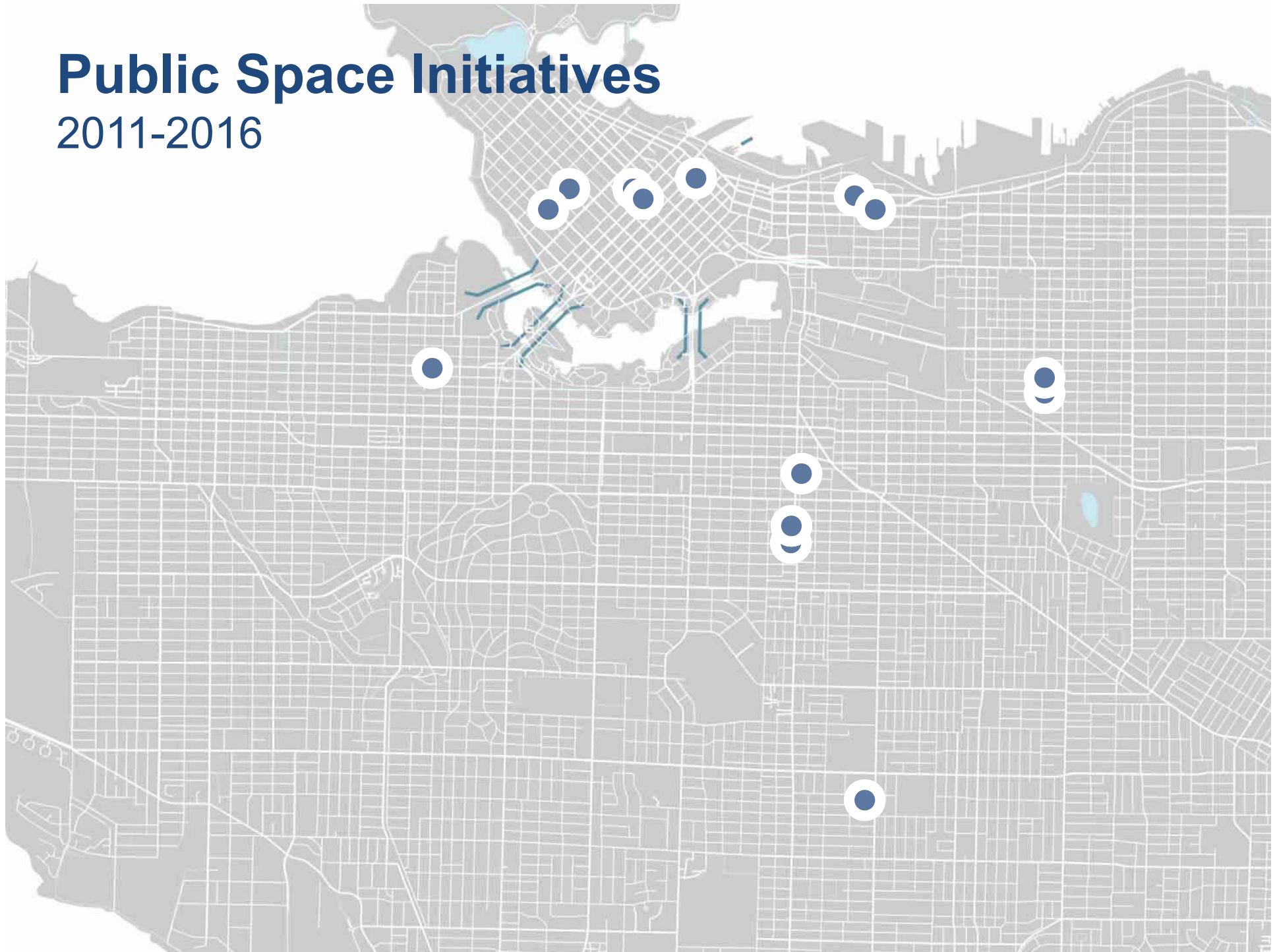


Public Spaces and Public Life

Presented by
Kathleen Corey
Street Activities

Public Space Initiatives

2011-2016





Streets as Places



Photo: Paul Krueger



Photo via DVBlA

Alley-Oop

Hastings / Seymour and Granville



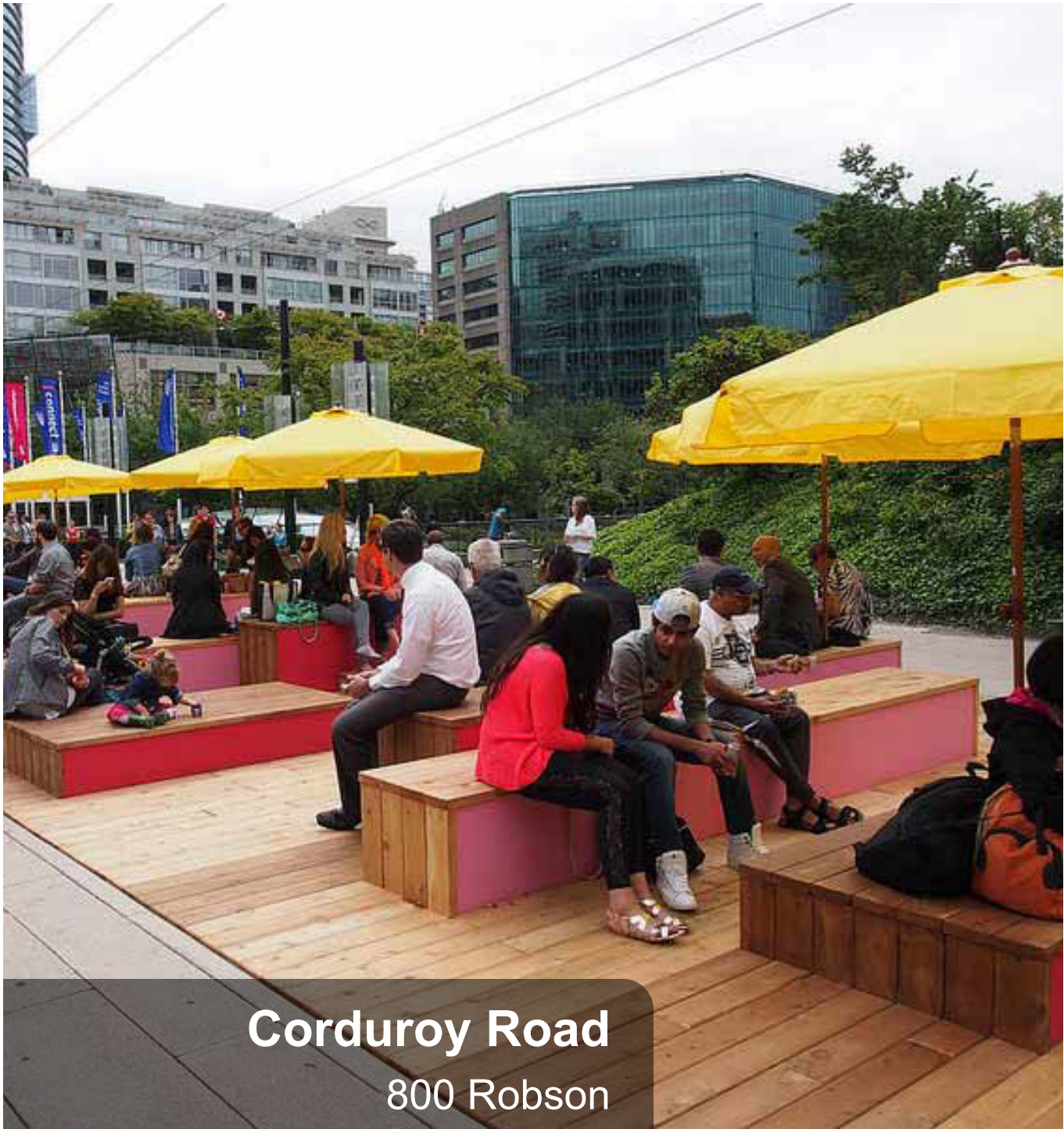


Plazas





Jim Deva Plaza
Bute at Davie



Corduroy Road
800 Robson





Photo: HAPA Collaborative

Mid Main Park
18th at Main



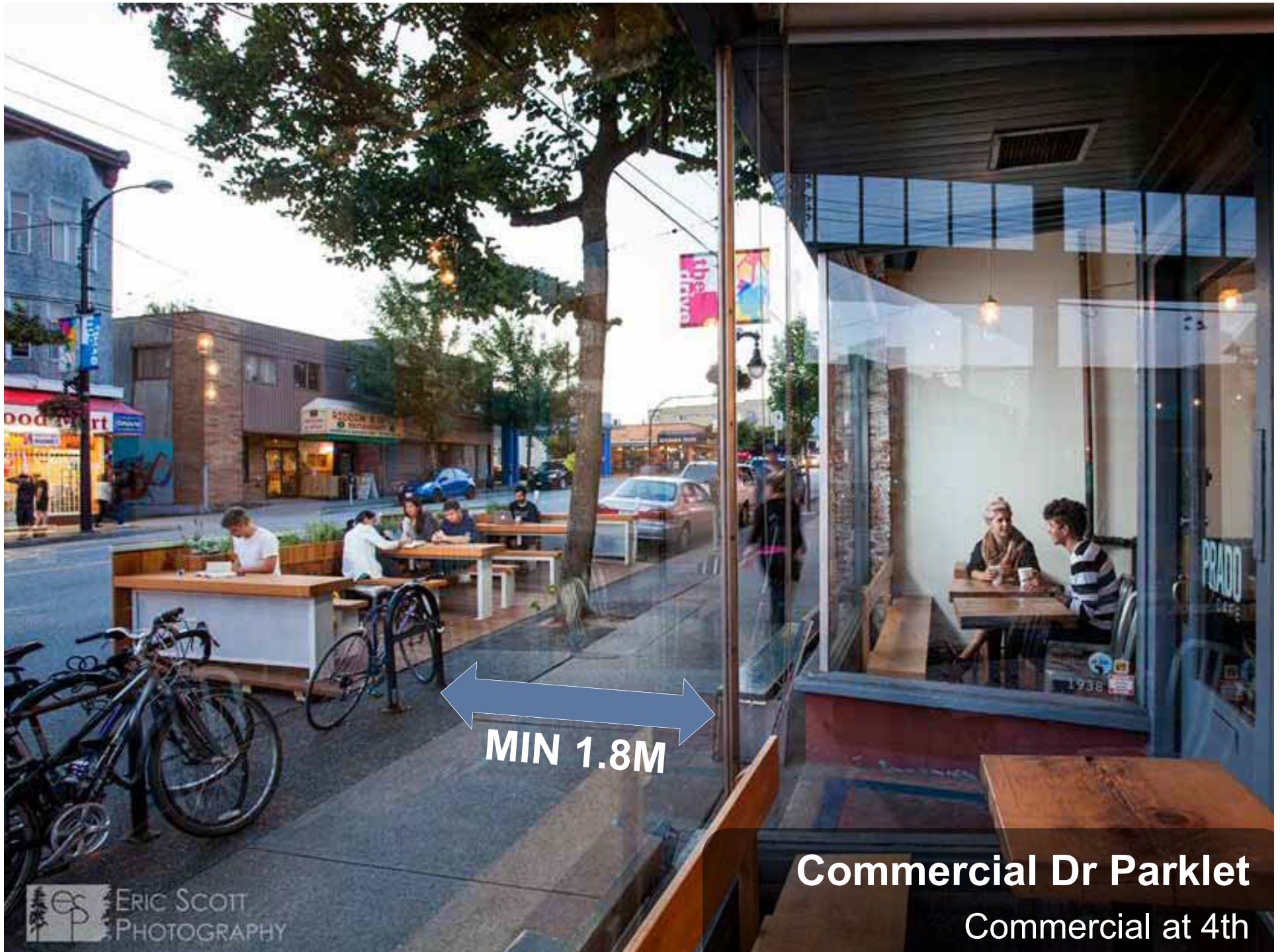
Public Realm Features



Photo: Paul Krueger

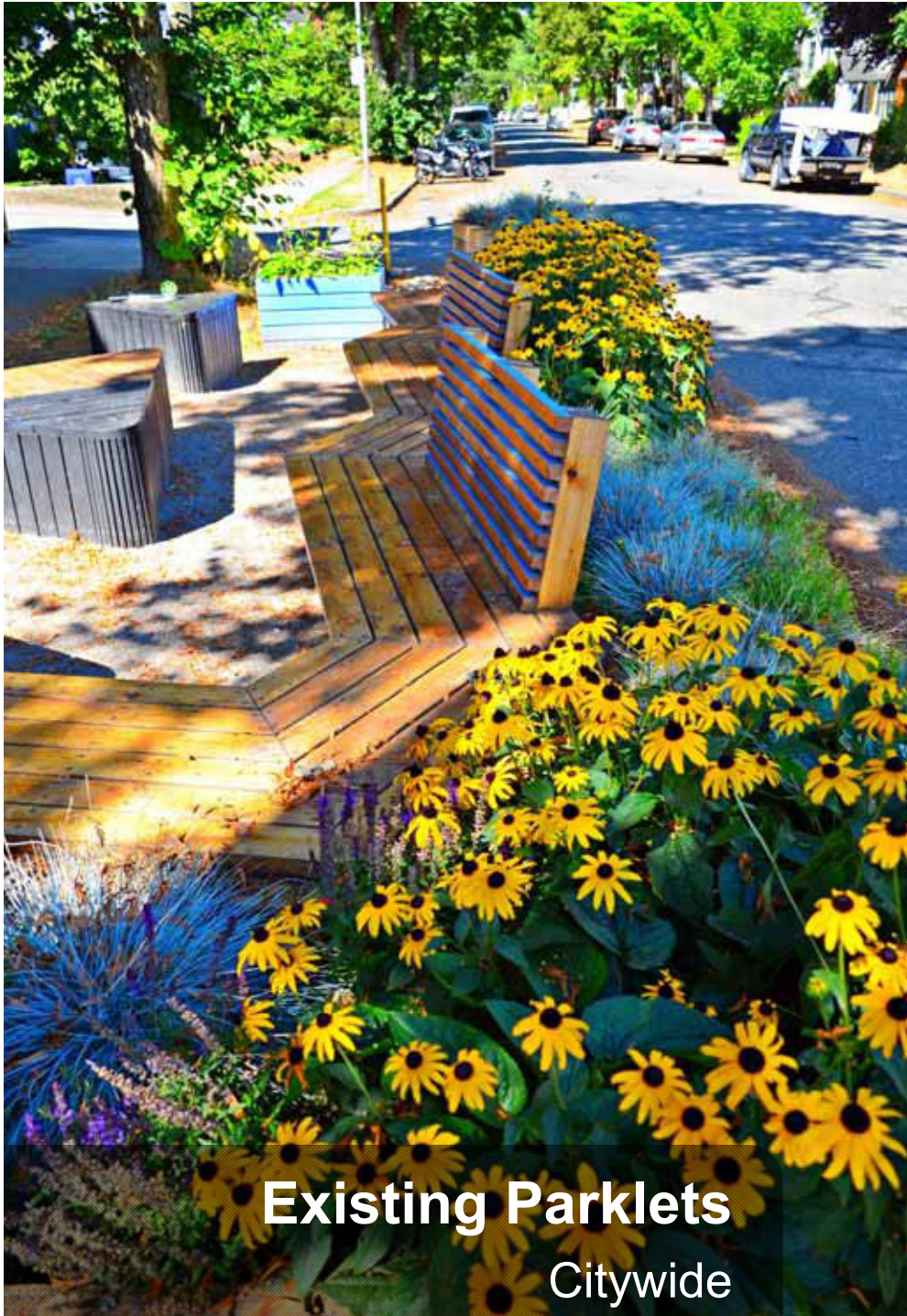


Boulevard Treatments
Citywide



MIN 1.8M

Commercial Dr Parklet
Commercial at 4th



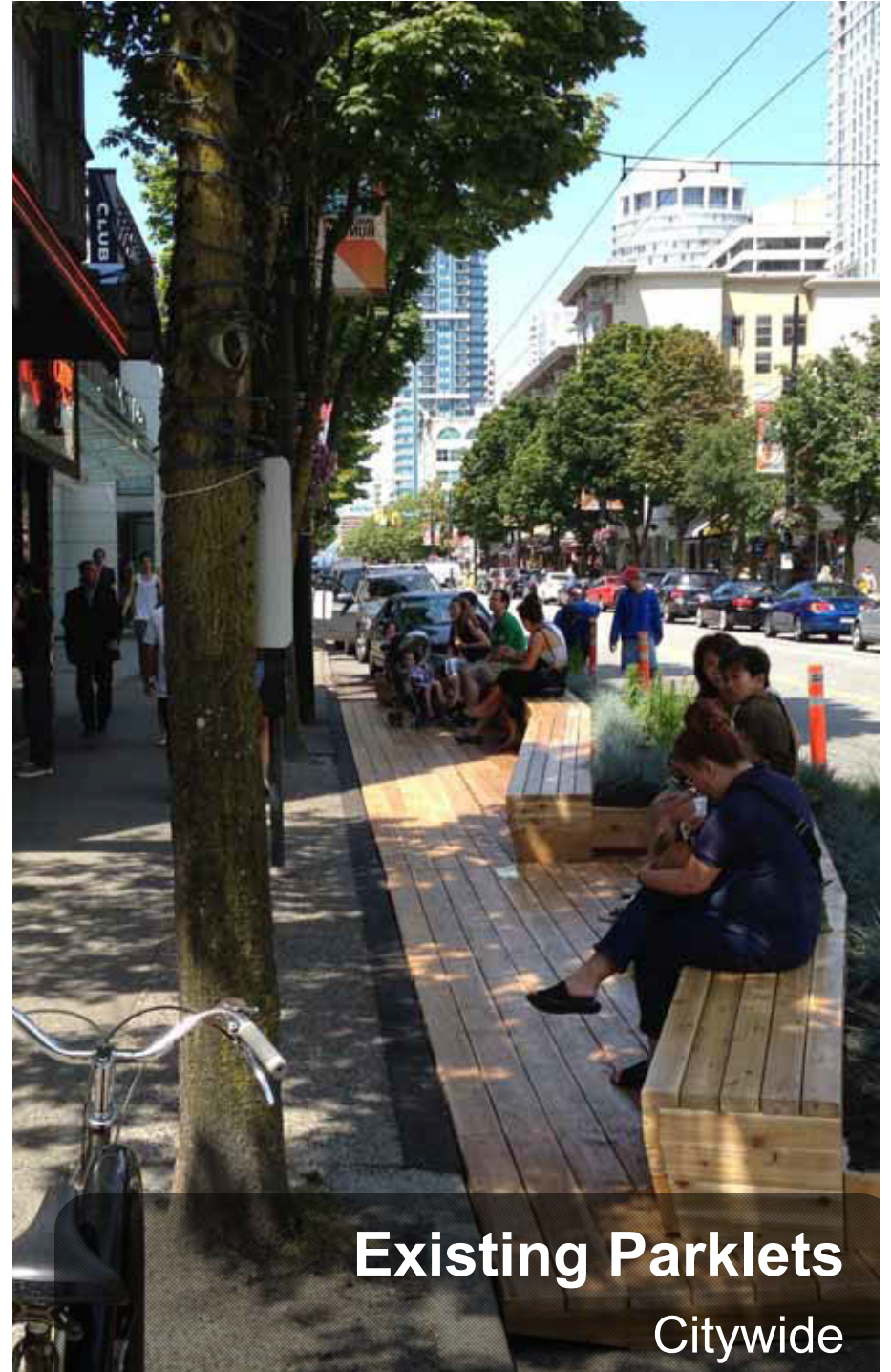
Existing Parklets
Citywide



Photo: Steve Chou



Photo: Paul Krueger



Existing Parklets
Citywide



VIVA Refresh 2017

Next Steps

- Meeting minutes to be circulated next week; materials online in March
- Next Meeting: May (date TBD)

- **Reminder** please report back to your respective organizations and share information broadly within networks
- **SAG Coordinator:** hailey.steiger-tang@vancouver.ca 604-873-7742

Questions? Comments?

Thank you



A detailed street map of the Grandview-Woodland neighborhood in Vancouver. The map shows a grid of streets including Napier Street, Parker Street, Commercial Drive, and Willow Street. A red line highlights a specific route through the neighborhood, starting from the top right and moving south. A blue box with an upward arrow and the text "You are here" is placed on Commercial Drive. Various landmarks are labeled, such as East Side Family Place, Britannia Elementary School, Britannia Community Centre, Britannia Library, and Britannia Secondary School. The text "GRANDVIEW-WOODLAND" is prominently displayed in large blue letters across the lower portion of the map.

GRANDVIEW-
WOODLAND