

# 1 PROJECT BACKGROUND



## WELCOME TO THE HILLCREST & RILEY PARKS MASTER PLAN OPEN HOUSE!

Significant changes have occurred at Hillcrest and Riley Parks over the last few years. Completion of the Hillcrest Centre as a 2010 Olympic Winter Games venue resulted in the relocation and subsequent demolition of the former Vancouver Curling Club building, the Riley Park Community Centre/Ice Rink and the Percy Norman Pool, with these programs being incorporated into the new Hillcrest Centre.

The 2012-2014 City of Vancouver Capital Plan has identified the need for a Masterplan for Hillcrest and Riley Parks to guide future park development and to prioritize park improvements for the current Capital Plan. There is approximately \$1.7 M available for park improvements undertaken in this capital plan period; however, funding for future park improvements is uncertain at this point.

The public is invited to this Open House to learn more about the Hillcrest and Riley Parks Master Plan project and to provide input that will guide the consultants and staff in developing a draft concept plan, which will be presented at another Open House in the spring of 2013. We invite you to talk to Park Board staff and the consultant team, consisting of landscape architects (HAPA Collaborative), transportation planners (Bunt & Associates, Drdul Community Transportation Planning) and urban planners/facilitators (Urban Forum Associates).

## PURPOSE OF THE OPEN HOUSE

The Vancouver Parks Board has commenced the preparation of a comprehensive Master Plan for Hillcrest and Riley Parks, based on recent developments in the study area. These developments include the opening of the Hillcrest Centre post-Olympics, the demolition of the former Vancouver Curling Club facility, new parking and traffic arrangements, and the recent demolition of the former Riley Park Community Centre/ Ice Rink and Percy Norman Pool. As part of this planning process, the Park Board is committed to seeking input from all stakeholders. The master planning process is now underway, and this is the first in a series of Open Houses that will be held during the planning process.

The planning process will lead to a master plan that includes new landscaping, an updated traffic and parking strategy, and other elements on site.

The purpose of this first Open House is to share some initial site analysis work, and to invite you to share some of your own ideas and suggestions for improvements to this important civic area. It is also an opportunity for the planning consultants to better understand where park/facility users are coming from and how they travel to the site. This information will in turn help inform the master planning process.

## WHAT WE HOPE TO LEARN

We want your input. Please take some time to review the material included here, and to participate in the interactive community mapping exercise. Your ideas for Hillcrest and Riley Parks can be put on boards 3 to 5 that will contribute to the Masterplan and toward prioritizing park improvements. We also invite you to fill out the survey, or to complete it online on the Vancouver Park Board website.

## THE DESIGN TEAM

The new Master Plan for Hillcrest and Riley Parks will be the result of a collaboration between Consultants, Vancouver Park Board staff, stakeholder groups, local residents and all park users. Thank you for attending this Open House. Your comments and ideas are crucial to the design process and we appreciate your feedback!

## CONSULTANT CORE TEAM

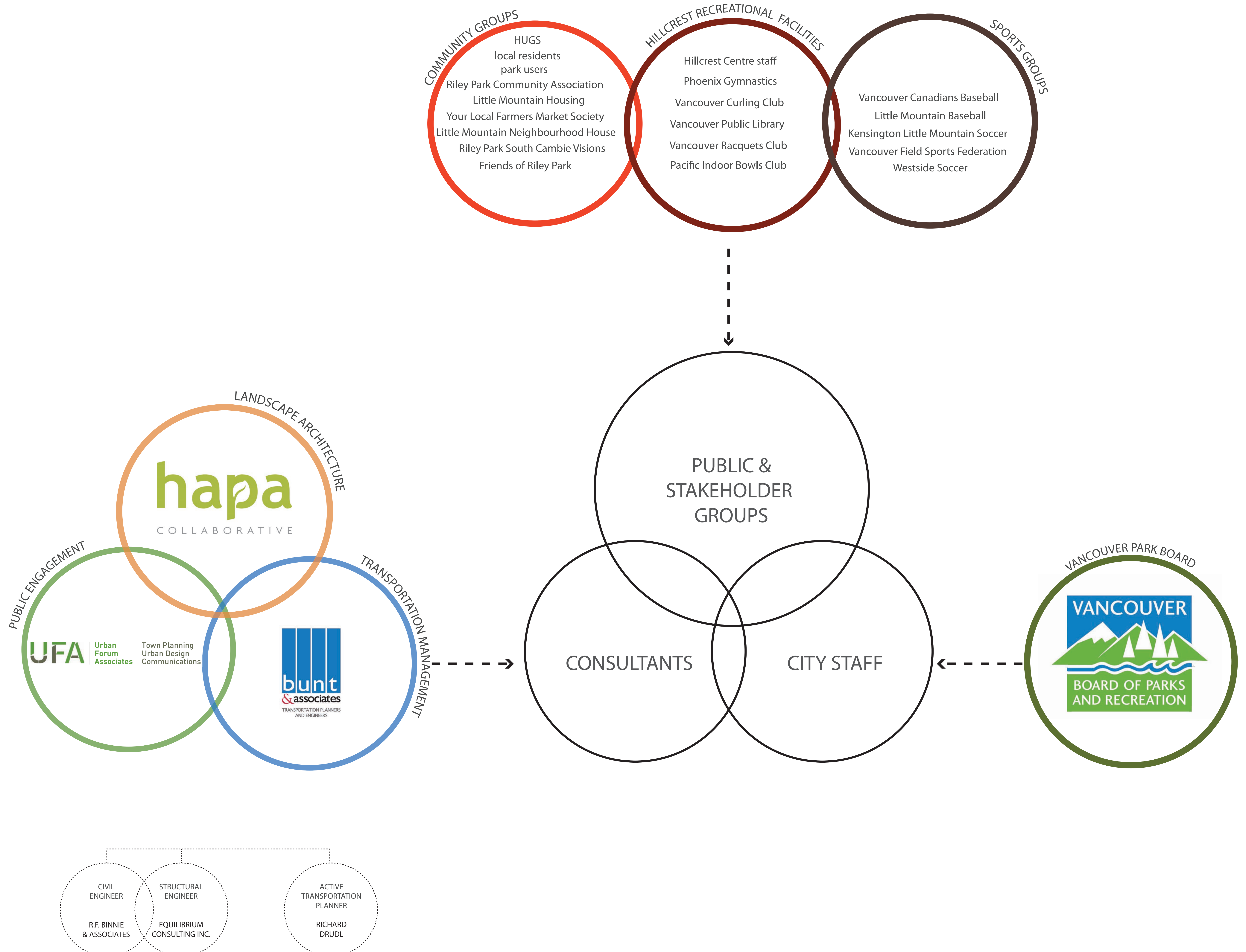
Our core design team is being led by **Hapa Collaborative Landscape Architecture** and Environmental Design who will bring a fresh set of eyes to study site character and context, define social and environmental features of the site, and conceptualize design of the site and surrounding urban form in a meaningful and integrated manner.

Our public process is being led by **Lance Berelowitz of Urban Forum Associates** who facilitated the public process and conceptual design for the 2000 Hillcrest and Riley Parks Master Plan and who brings years of public process facilitation experience to the project.

Our parking and traffic consultation is being facilitated by **Bunt and Associates** who will continue with the work they completed for the 2011 Parking and Traffic Demand Management Report.

## SUPPORT TEAM

Our support team includes **Richard Drdul, P.Eng** an active transportation specialist who assisted Vancouver Parks with the Stanley Park Cycling Plan, and **Equilibrium Consulting Inc. and R.F. Binnie and Associates** who will be our respective structural and civil engineers for the construction documentation and contract administration phases of the work.



A Partnership of:



# 2 WHERE WE'RE AT

## The Planning Process

The VPB undertook an earlier planning exercise that led up to the 2000 Riley Hillcrest Park Master Plan. The 2000 Riley Hillcrest Park Master Plan process also included substantial stakeholder and public consultation, and resulted in a plan that enjoyed widespread support. However, whilst the Parks Board approved the 2000 Master Plan at the time, subsequent events — most significantly the decision to host a 2010 Winter Olympics facility at Hillcrest — have meant that the recommendations of the 2000 Plan were superseded. The current planning process will see development of preliminary plan options early in the new year (2013). Following stakeholder and public review and feedback, these options will be refined into a preferred draft master plan for Hillcrest and Riley Parks. The draft plan will be further reviewed and refined during 2012. Once it has been approved, the consultants will prepare construction documents in order to tender the work. Construction is expected to begin in 2014, with completion some time in 2015.

## 2012 Current Site Conditions

The Vancouver Board of Parks and Recreation is currently working with a consultant team on improving Hillcrest and Riley parks. Changes at both of these sites, including demolition of the Curling Club, Riley Community Centre and Percy Norman Pool, have created an exciting possibility for various new park program elements, as well as upgrades and greening to both parks.

The current project funding is allocated to updating the master plan for the two parks, as well as for park improvements. The key thrust and underlying objective of this process is to ensure that Hillcrest and Riley Parks continue as a significant community asset both today and into the future.

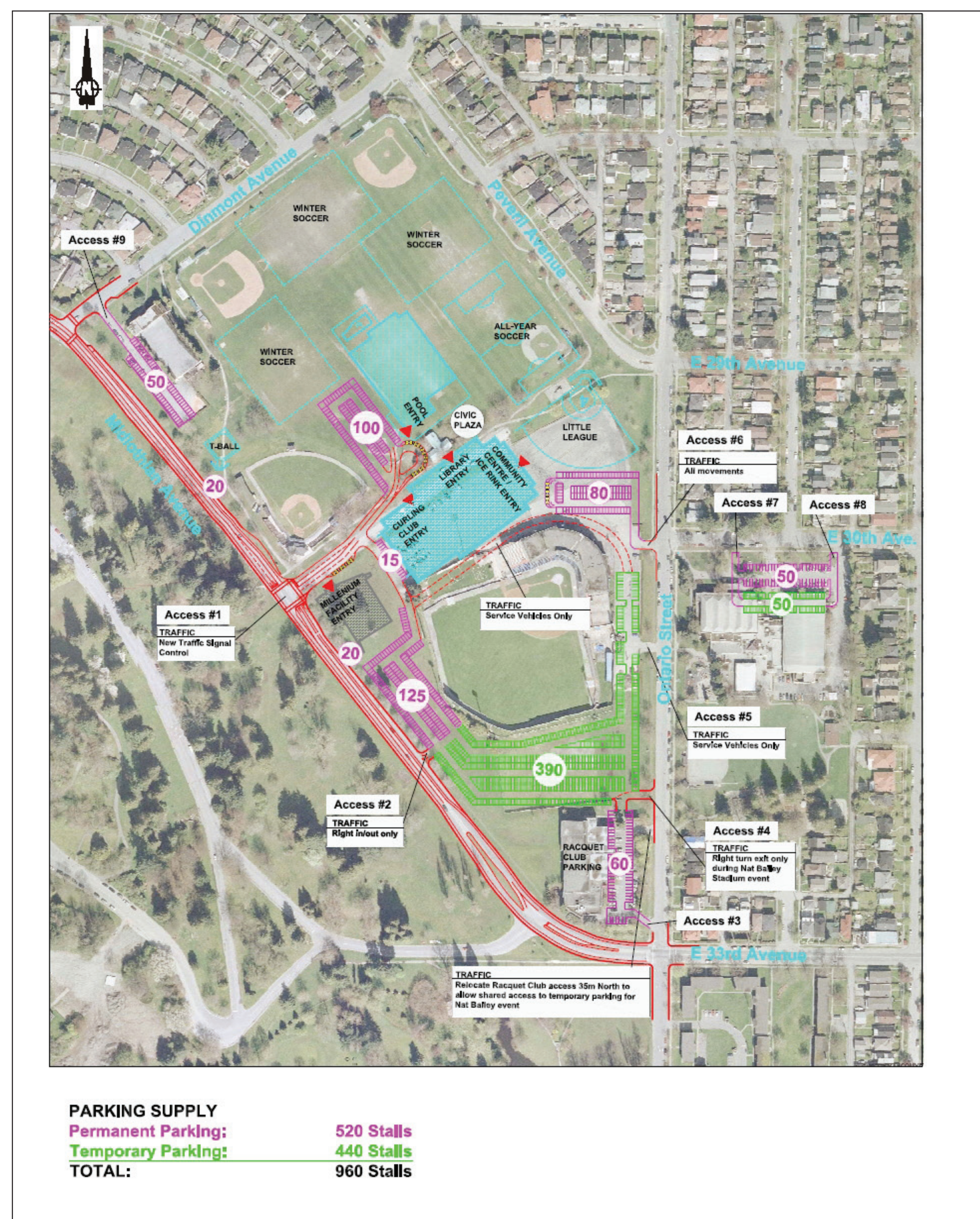


## 2005 Revised Parking and Access Plan

In 2005, prior to the development of Hillcrest Centre, the Board approved the Riley / Hillcrest / Nat Bailey Stadium Parks Master Plan, which incorporated modified parking and access arrangements for the purpose of initiating the rezoning process.

The revised parking and access plan is the result of traffic studies carried out by Bunt & Associates, the project's transportation consultant, in 2005 and on feedback gathered from a public open house and from the Planning and Environment Committee on September 15, 2005. Based on this feedback, five principles were identified that must be balanced to achieve an acceptable parking and traffic plan:

- 1) flexibility
- 2) client convenience
- 3) neighbourhood impact
- 4) park user impact
- 5) affordability



## 2000 Illustrative Landscape Plan, Scenario 2

### Summary of Plan

- Riley Park Community Centre expanded on site
- Riley Park kids playfield relocated to west side of Ontario Street
- Riley Park redesigned as neighbourhood park with improved access from Community Centre
- Ontario Street traffic calmed with pedestrian improvements
- Millennium Sports facility located at corner of Midlothian and Clancy Loranger Way
- Vancouver Raquets Club expanded on west side
- Nat Bailey stadium parking rationalized to permit more direct pedestrian route between Riley and Hillcrest parks
- Hillcrest Park layout remained as is
- Vancouver Curling Club potential expansion on northeast side
- New sidewalks on Midlothian and on Clancy Loranger Way
- Improved ped crossing of Midlothian and new pedestrian path into QE Park
- New pedestrian greenway between RPCC and QE Park
- New on-street parking on east side of Midlothian



<b>2015</b>	<b>2015</b> Park construction completed
<b>2014</b>	<b>2014</b> Begin park construction
<b>2013</b>	<b>2013</b> Hillcrest Riley Master Plan process: develop Concept Plan, stakeholder meetings, Open Houses, Concept Plan approval
<b>2012</b>	<b>2012</b> Hillcrest Riley Master Plan process: meeting with stakeholders and <b>Public Open House #1</b>
<b>2011</b>	<b>2011</b> 2012-2014 Capital Plan approved for Hillcrest Riley Master Plan and park improvements
<b>2010</b>	<b>2010</b> The curling competition of the 2010 Olympics held at the Vancouver Olympic/Paralympic Centre
<b>2009</b>	<b>March 2009</b> World Junior Curling Championships held at the Vancouver Olympic/Paralympic Centre
<b>2007</b>	<b>March 2007</b> Construction commences on the Vancouver Olympic/Paralympic Centre at Hillcrest Park
<b>2006</b>	<b>January 2006</b> The Revised Parking and Access Plan, 2005 included in Council report, CD-1 Rezoning of Hillcrest and Nat Bailey Stadium Parks
<b>2005</b>	<b>October 2005</b> The Revised Parking and Access Plan, 2005 approved for the purpose of initiating the rezoning process
	<b>May 2005</b> The Riley, Hillcrest, Nat Bailey Stadium Park Masterplan approved for building massing and siting
<b>2003</b>	<b>July 2003</b> International Olympic Committee selects Vancouver and Whistler to host the 2012 Olympic Winter Games. Hillcrest Park identified as an olympic venue which required a new masterplan
<b>2000</b>	<b>September 2000</b> Riley Hillcrest Park Masterplan, <b>Scenario 2</b> , approved by Vancouver Parks Board