

# 6 TRAFFIC & PARKING

## The Traffic and Parking Planning Process

Bunt & Associates are undertaking a detailed review of traffic and parking conditions at Hillcrest & Riley Park during both regular and peak periods. This process began in the summer of 2011 when peak Nat Bailey Stadium event time periods were surveyed. Bunt is currently focusing on the additional traffic and parking demands of the newly completed Hillcrest Centre as well as the projected demands for the current Hillcrest & Riley Park vision. The result will be a traffic and parking demand management plan that maximizes existing parking supply efficiency.

In addition to parking management we are also examining the potential need for additional parking supply with an understanding that the current lease with the Vancouver Canadians requires that there be 50 permanent stalls and 50 temporary stalls provided at Riley Park on game days.

Bunt and Richard Drdul, our active transportation specialist, will provide strategies for sustainable transportation mode growth for this important community destination.

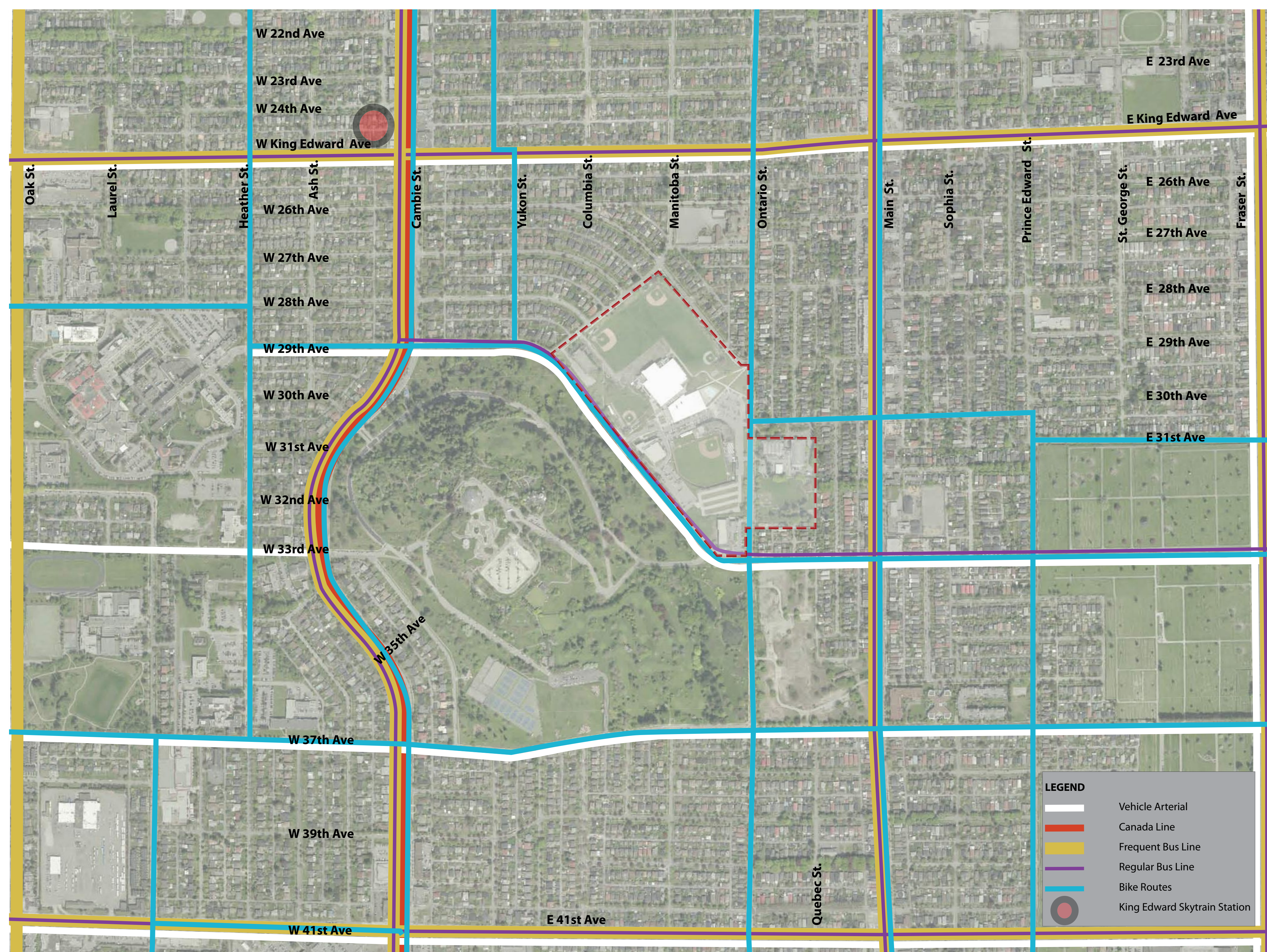
## Study Area for Parking Supply & Regulations

### Parking Supply Summary

On-site:	692
Perimeter Public Available:	130
Vancouver Curling Club*:	44
Riley Park*:	86
Queen Elizabeth Park Ring Road:	200
<b>Total Available Spaces:</b>	<b>1,152</b>

\* Under Demolition

## Study Area Major Adjacent Transportation Network

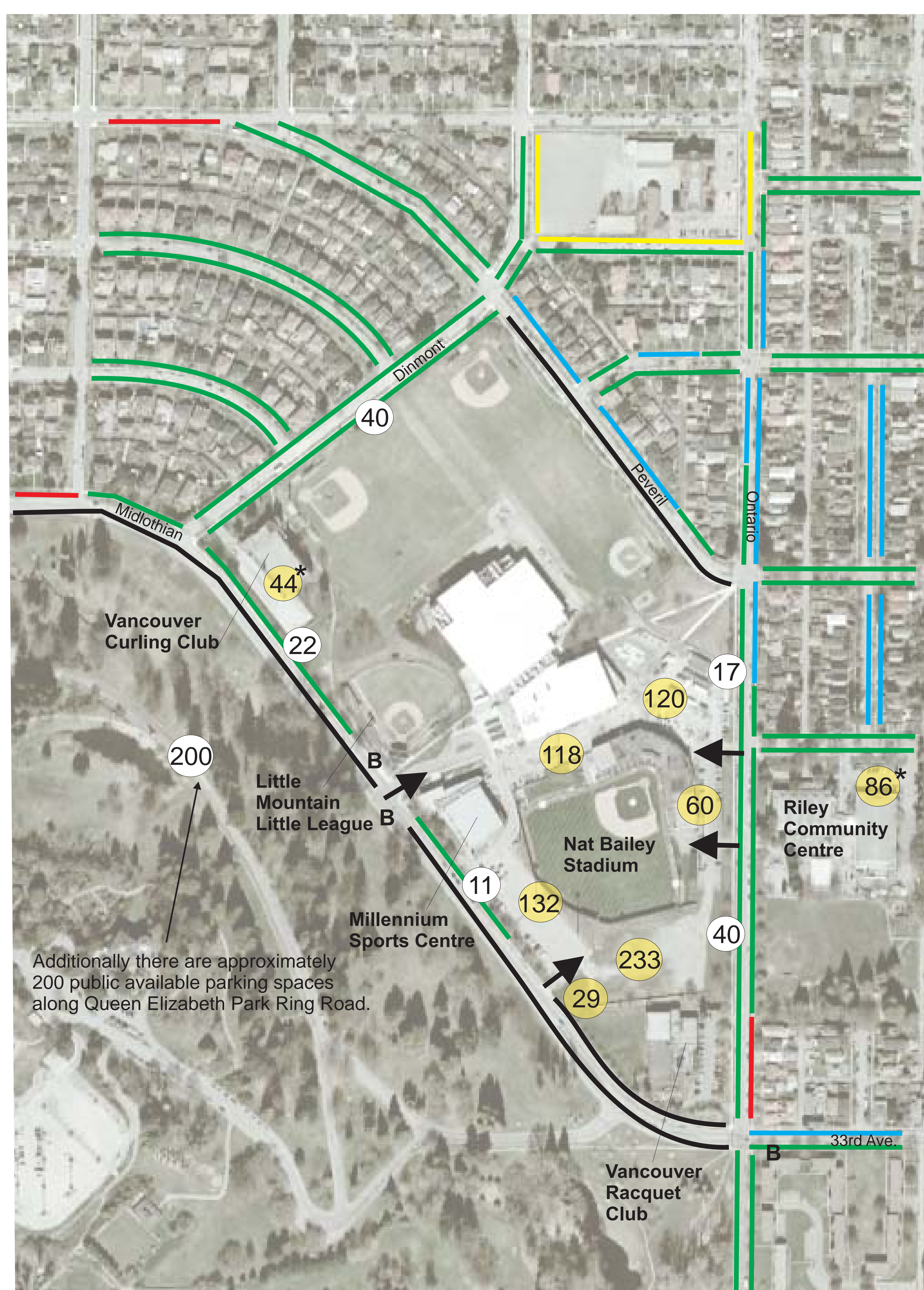


## Parking Supply and Demand for On-site Availability and the Adjacent Street Network

Game day = July 1, 2011, Vancouver Canadians game 7pm -10:30pm

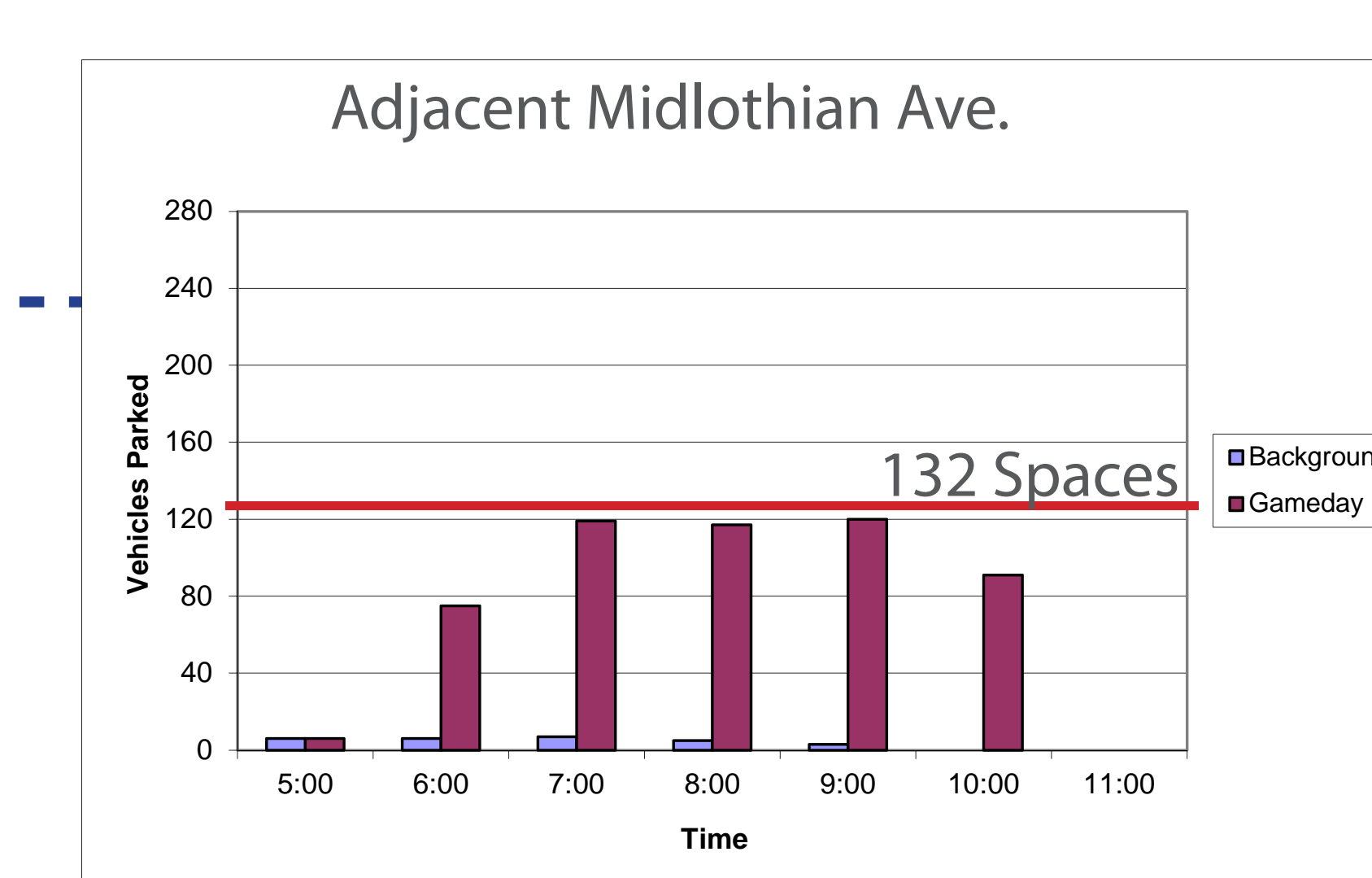
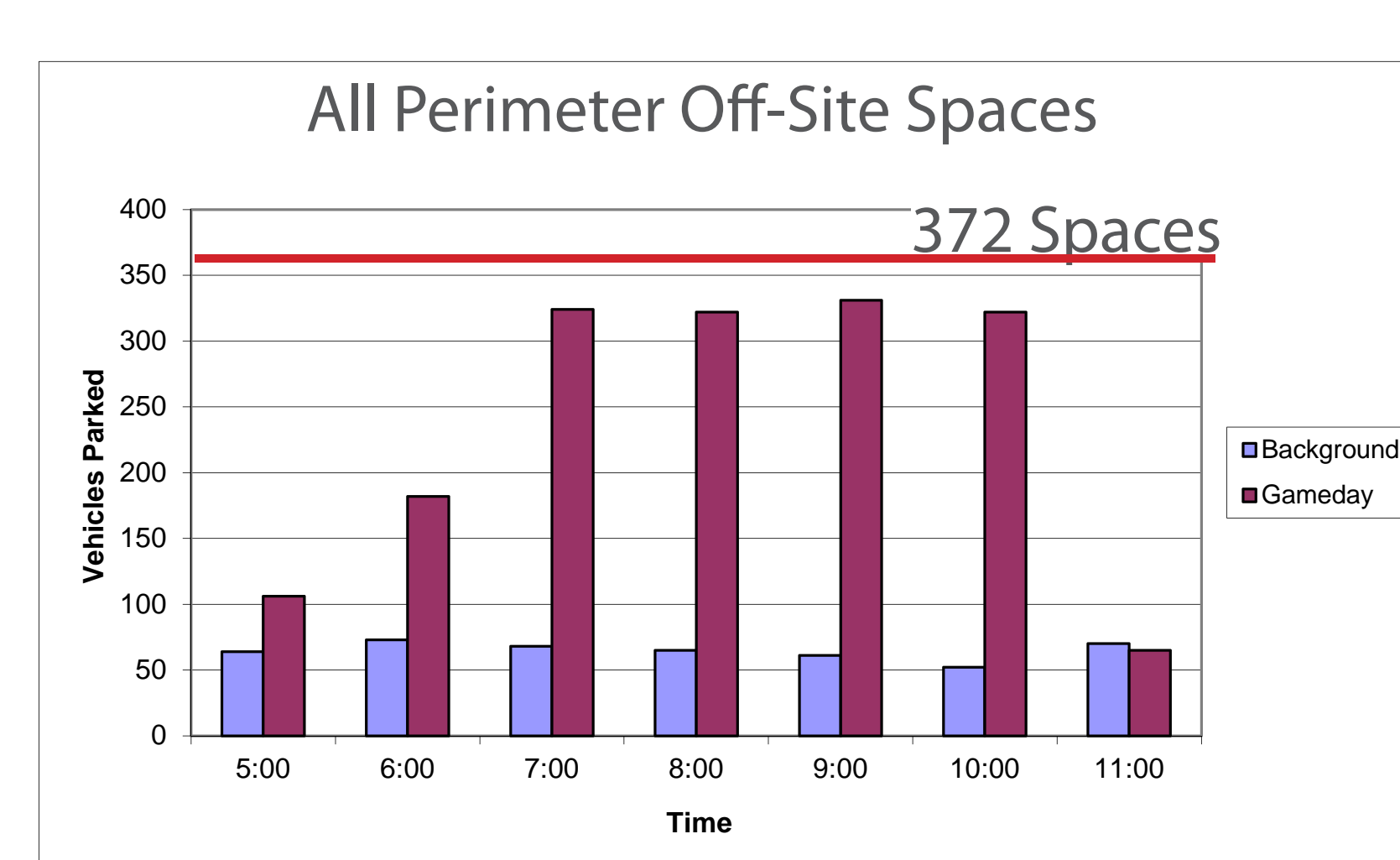
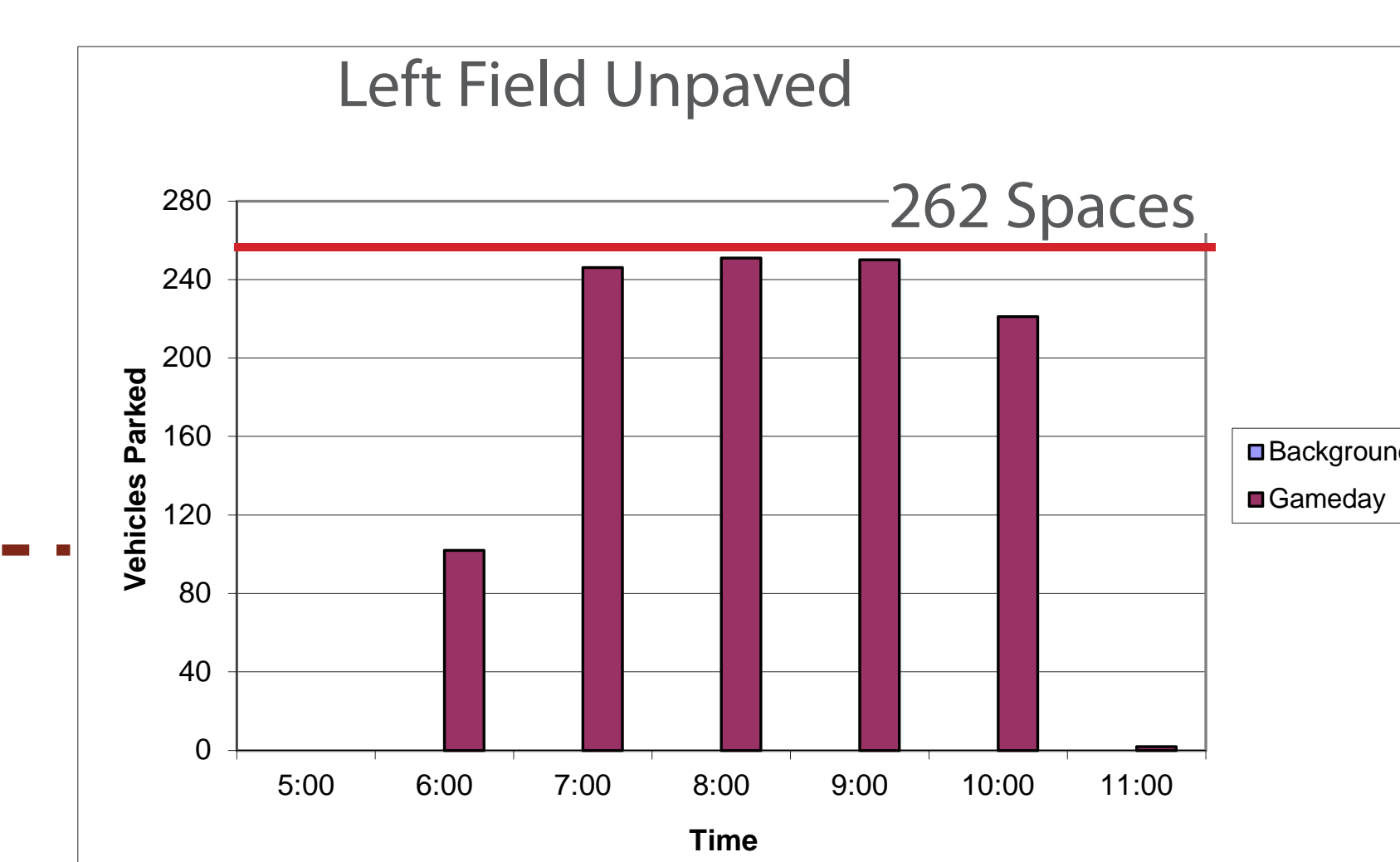
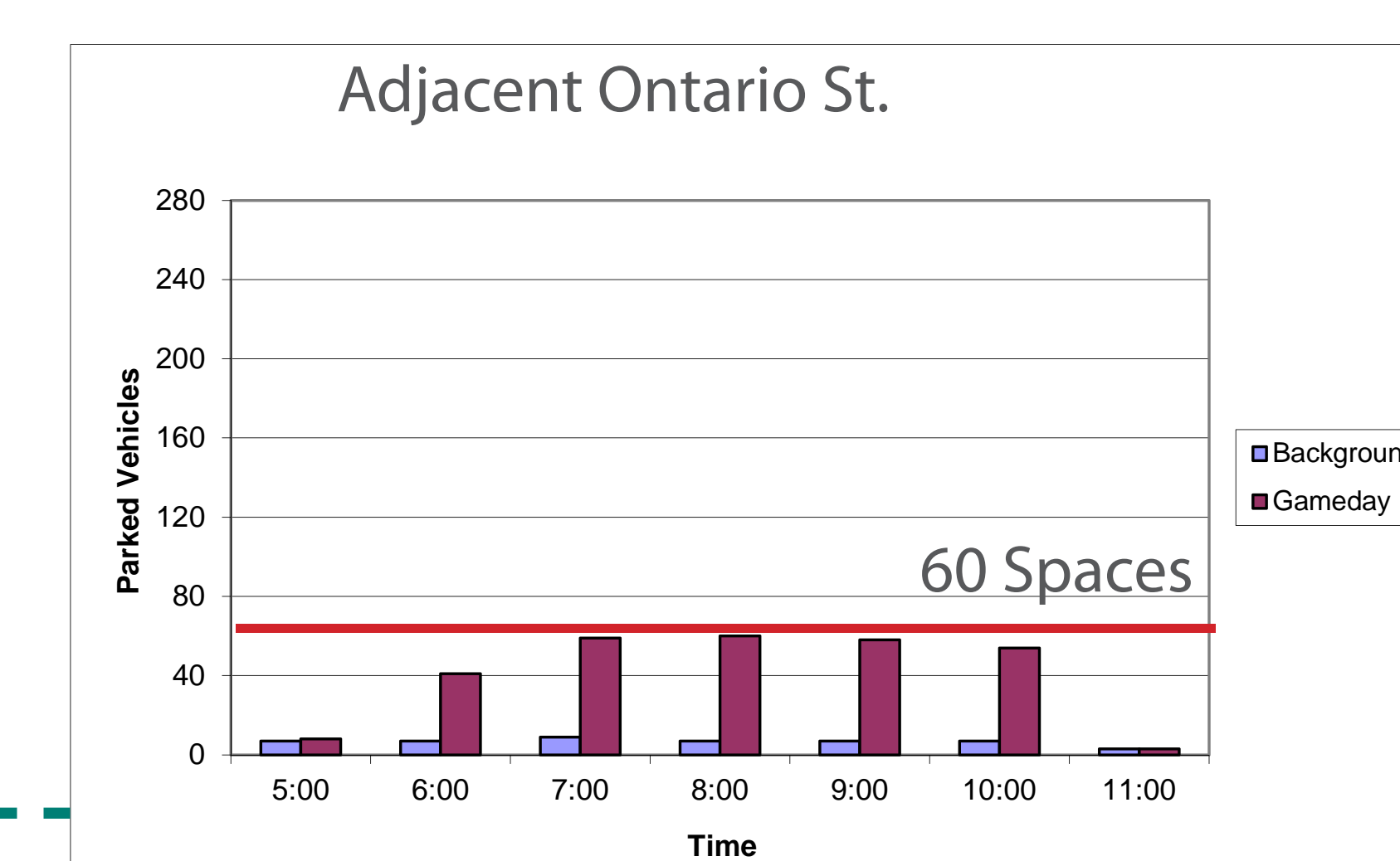
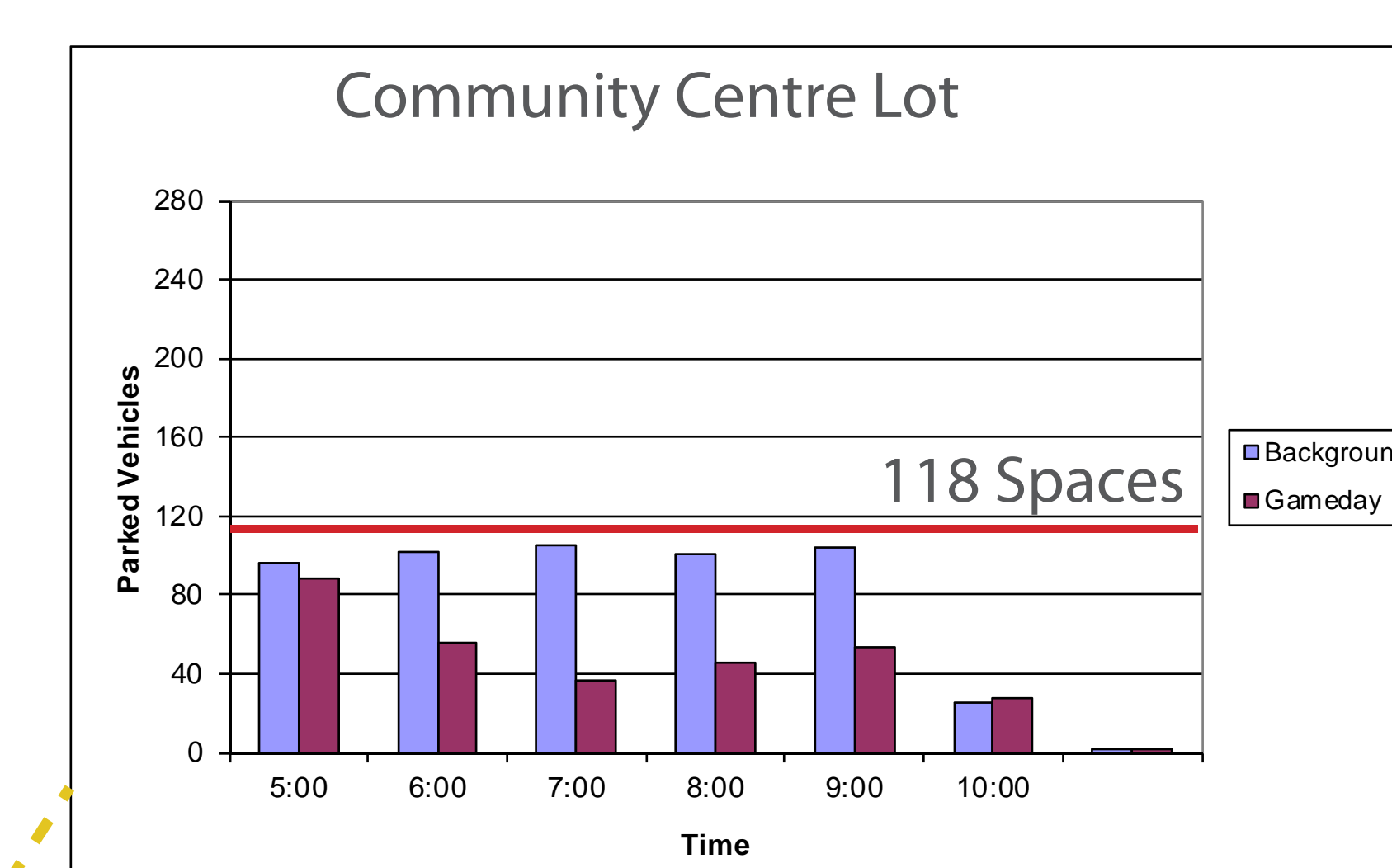
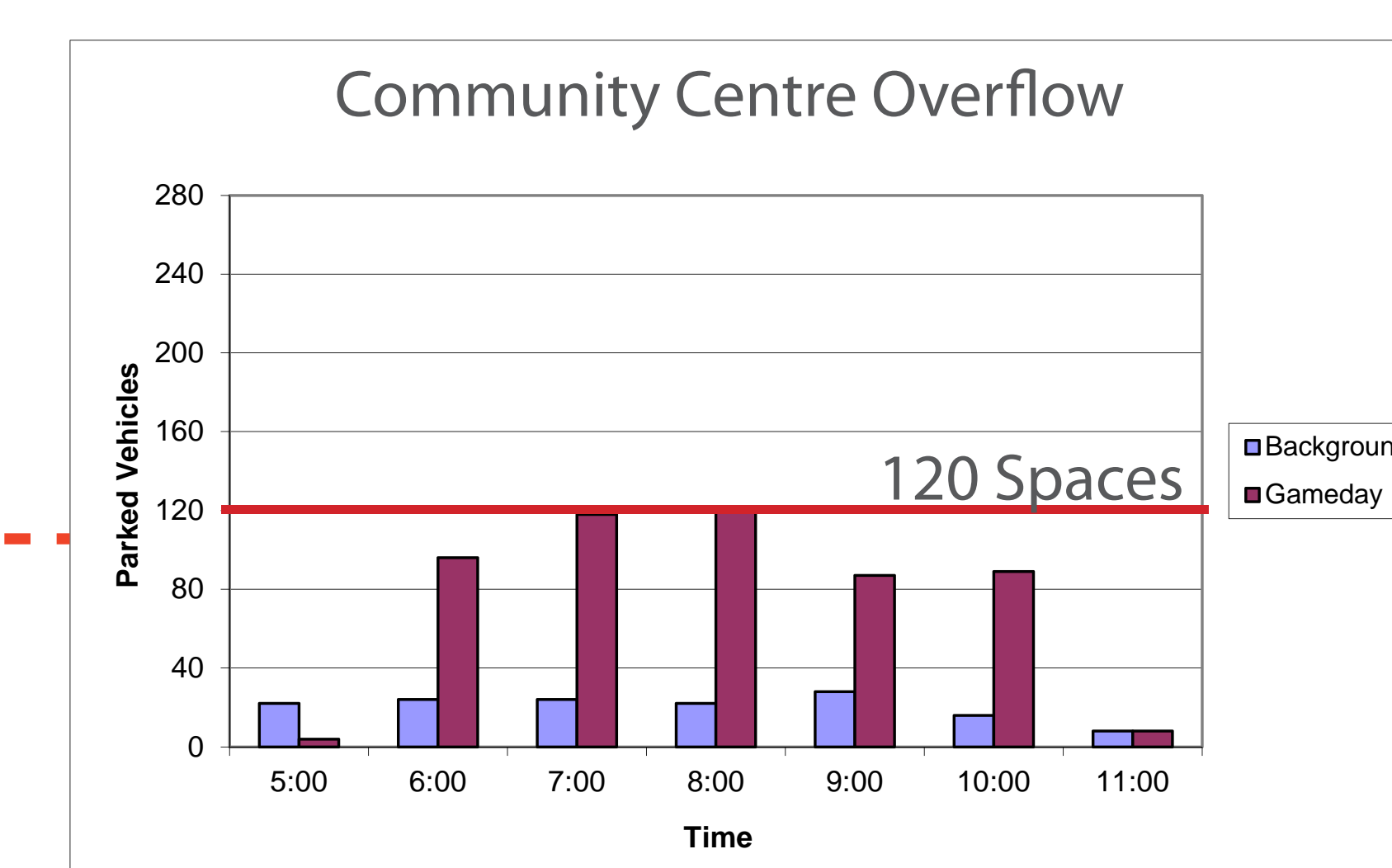
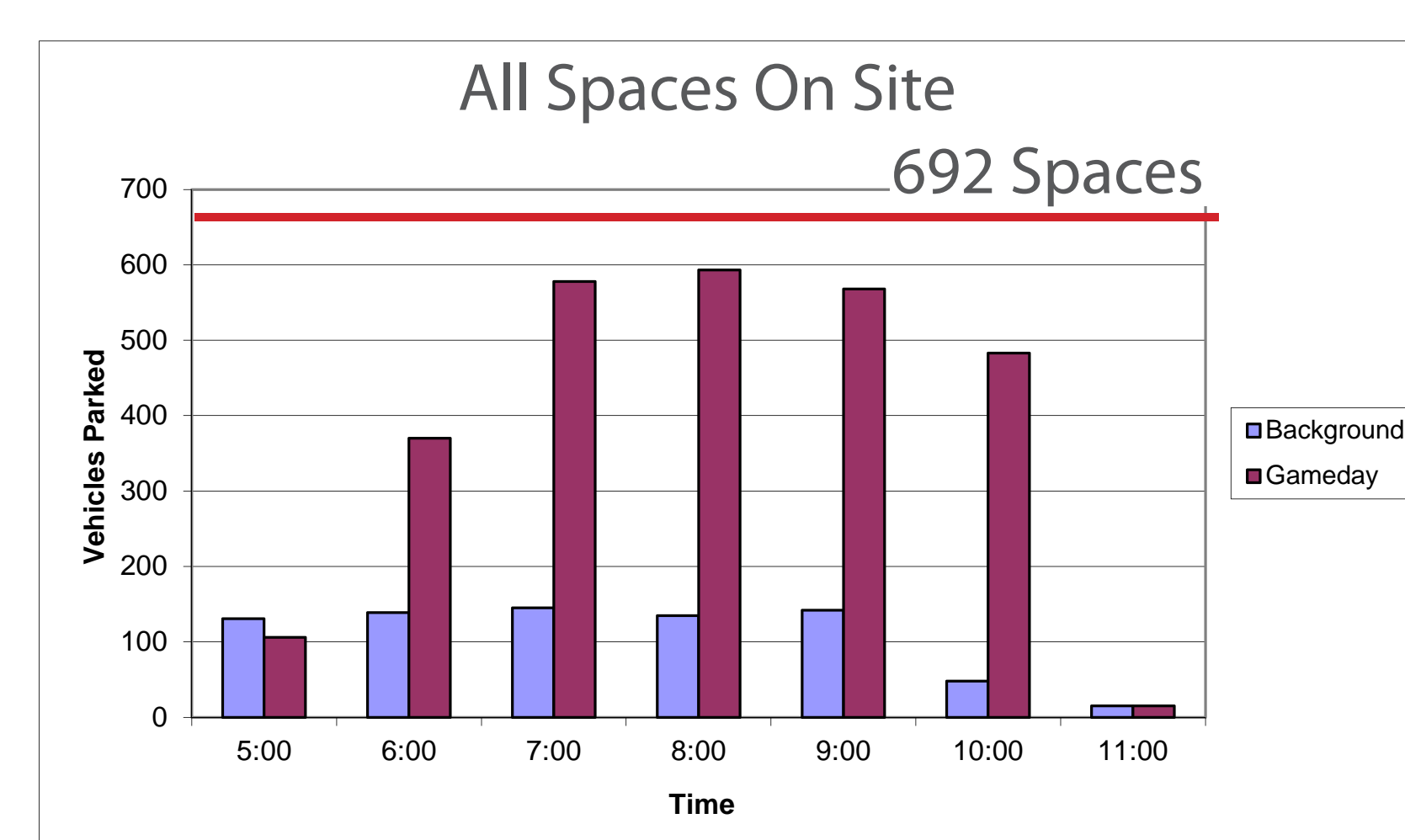
Background = July 8, 2011, Friday, no Nat Bailey event

- Incomplete Hillcrest Community Centre (Aquatic & Fitness Centre) open during both survey periods to 10pm.
- Phoenix Gym closed all evenings at 5pm. Was closed all day July 1
- Riley Community Centre and Vancouver Curling Club decommissioned.



Additionally there are approximately 200 public available parking spaces along Queen Elizabeth Park Ring Road.

- No Regulation
- Resident Only During Events
- Resident Permit Only
- No Parking
- No Parking During School Hours
- Site Access
- B = Bus Stop
- 4 = Estimated Perimeter Publically Available Parking Spaces
- 44 = Estimated "On-Site" Parking Spaces



A Partnership of:

