

Public Realm Plan

How will the Public Realm Plan be implemented?

The Public Realm Plan document will set out a vision for the next 30 years. Over time, Plan elements and aspects can be implemented as opportunities arise through:

■ Site Specific Redevelopment:

As sites redevelop, improvements to the public realm occur such as sidewalk restoration, additional street trees and new pedestrian connections.

■ City Funds and Capital Investment

Strategically the City may purchase or repurpose land to achieve public realm priorities. E.g., Street-to-Park, Plaza-to-Pavement

■ Community Initiatives:

E.g. enhanced boulevards, street and laneway animation (art walks, Livable Laneways), art projects

The Importance of the Public Realm and a Public Realm Plan

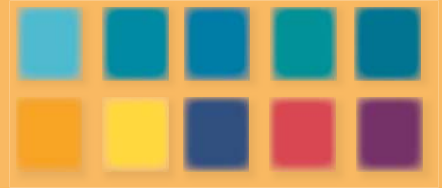
The public realm has a major role to play in defining the unique character, attractiveness, walkability and success of any neighbourhood. It can improve connections to destinations and encourage sustainable modes of transportation such as walking, cycling and use of public transit.

A Public Realm Plan outlines a comprehensive, strategic approach to how the public realm is developed and enhanced.

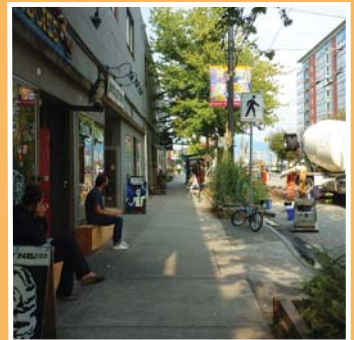
TELL US
WHAT YOU
THINK

QUESTION 8:

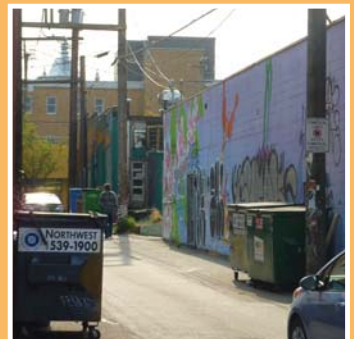
What are your Public Realm priorities for implementation? What would you like to see happen first?



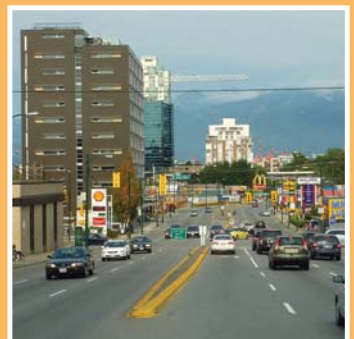
Streetscape, 10th Avenue at Main Street



Streetscape, Kingsway and 8th Avenue



Laneway, west of Main Street



View, Main Street and 2nd Avenue

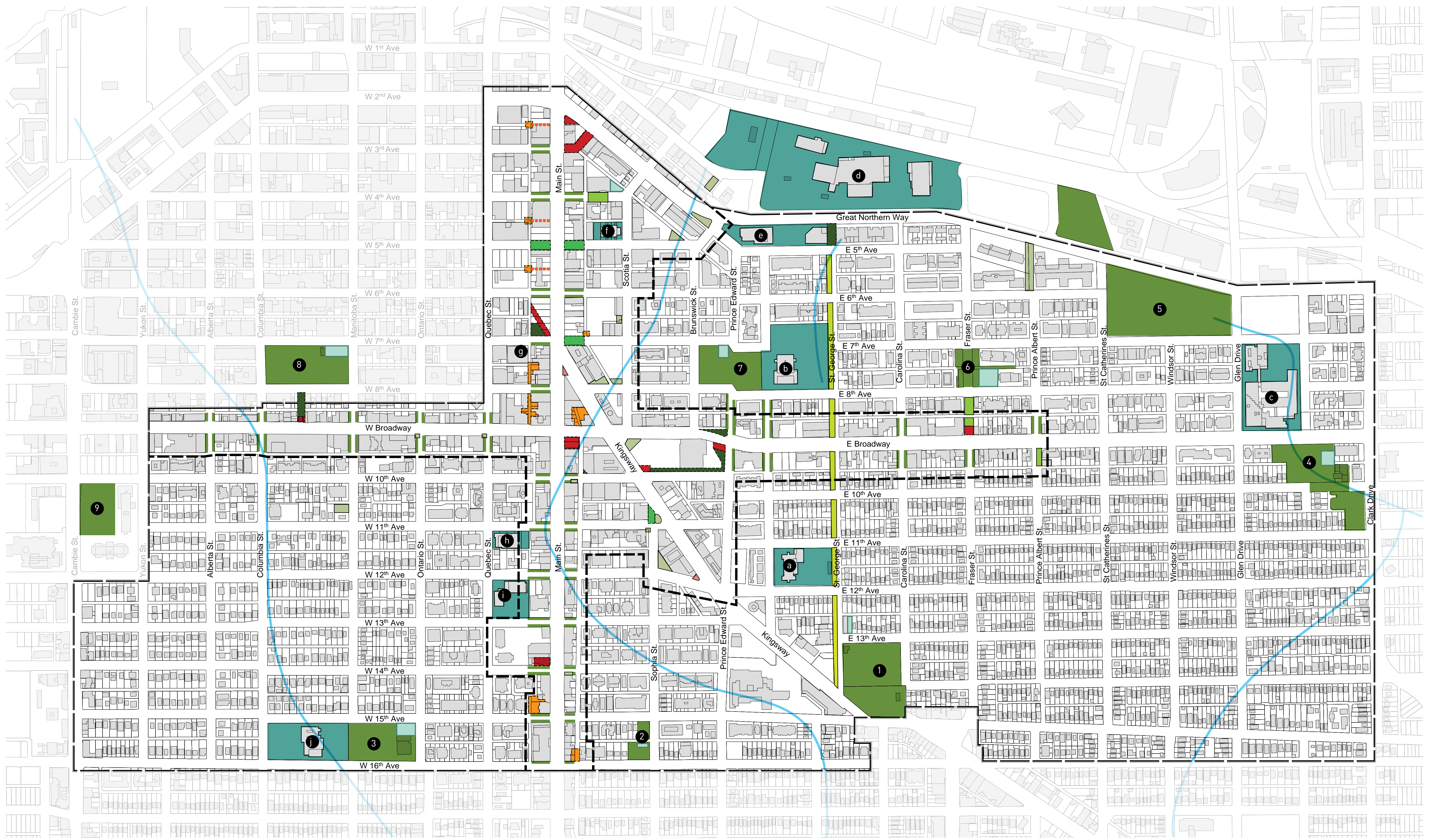
FOR MORE INFORMATION on the Mount Pleasant Community Plan and the implementation program, visit vancouver.ca/mountpleasant

 CITY OF
VANCOUVER

PUBLIC REALM: EMERGING CONCEPTS

PUBLIC OPEN SPACE - PARKS / POCKET PARKS / PLAZAS / BOULEVARD PARKS

DRAFT



Legend

- | | | | | | | | | | |
|-----------------------------|----------------------------|----------------------------|----------------------|----------------------------------|--------------------------|------------------------|----------------------|-------------------------------|--------------------------------|
| Existing Park | Existing Schoolyard | Existing Urban Agriculture | Existing Pocket Park | Existing Plaza | Potential Boulevard Park | Robson Park | Sahall Park | Nightingale Elementary School | Native Education College |
| Proposed Street to Park | Potential Street to Park | Potential Pocket Park | Potential Plaza | Potential Special Events on Lane | | Tea Swamp Park | Guelph Park | Mt Pleasant Elementary School | Sarah McLachlan Music School |
| Proposed St. George Rainway | Potential Midblock Passage | | | | | Mount Pleasant Park | Jonathan Rogers Park | VCC King Edward Campus | St Patrick's Secondary School |
| | | | | | | China Creek South Park | City Hall Park | Great Northern Way campus | St Patrick's Elementary School |
| | | | | | | China Creek North Park | | St. Francis Xavier School | Simon Fraser Elementary School |

RECOMMENDATIONS:

- Add plazas along both Main Street and Broadway at strategic locations.
- Reinforce St George as a "rainway"/artway street connecting Great Northernway campus to Kingsway. Make a rainwater / stormwater feature.
- Incorporate an off leash dog park into neighbourhood open space.
- Look for opportunities to use streets as community recreational space at strategic locations.
- Enhance boulevards along Broadway and Main to reinforce connections to the lanes.
- Increase the biodiversity of planting in parks
- Enhance seating opportunities along Broadway and Main.
- Jonathan Rogers Park: Incorporate features for both programmed and passive activities.

DESIGN IDEAS AND OPPORTUNITIES:



Pocket Park



Special Event on Lane



Street to Park/Plaza



Enhanced Boulevard / Parklette



Neighbourhood Plaza



Enhanced Boulevard / Park

Thoughts or Ideas?
Place Comments On Sticky Notes Here

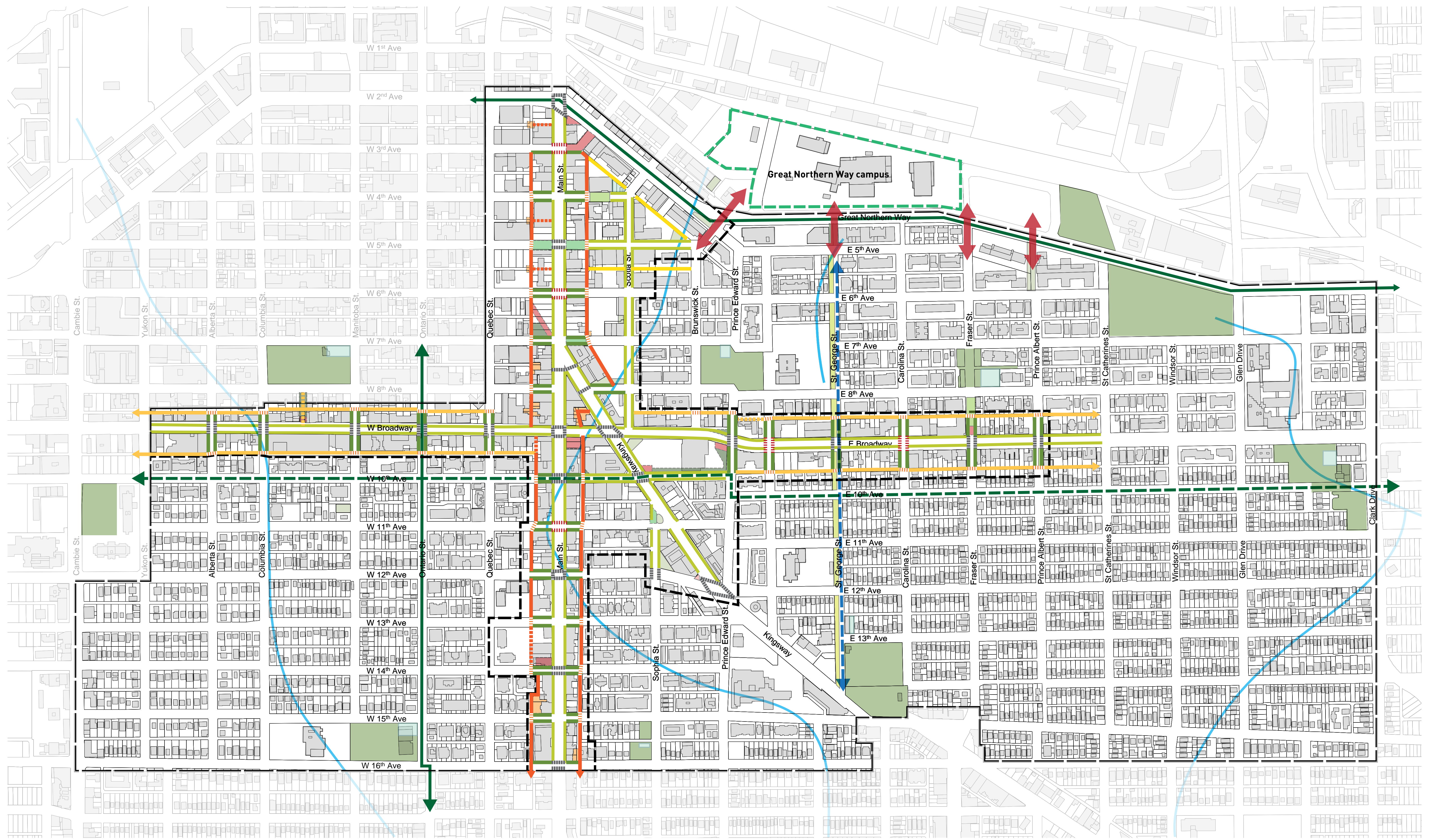
FOR MORE INFORMATION on the Mount Pleasant Community Plan and the implementation program, visit vancouver.ca/mountpleasant



PUBLIC REALM: EMERGING CONCEPTS

PUBLIC OPEN SPACE - ENHANCED PEDESTRIAN NETWORK

DRAFT



Legend

- Enhanced Main Street Laneway
- Enhanced Broadway Laneway
- Enhanced Laneway
- Existing Pedestrian Crossing With Light
- Potential Pedestrian Crossing With Light
- Potential Mid Block Crossing
- Potential Boulevard Parks
- Potential Midblock Passage
- Enhanced StreetScape
- Existing Greenway
- Potential Greenway
- Potential St. George Rainway
- ↔ Reinforce Connectivity

RECOMMENDATIONS:

- Create Main Street lane route with mid block crossings where appropriate.
- Create Broadway lane route with mid block crossings where appropriate.
- Enhance lane character to be more pedestrian friendly while keeping them funky and gritty.
- Provide strong pedestrian connections to future Great Northernway campus.
- Make St. George a rainway/artway from 2nd Ave to Kingsway.
- Improve crossings at Main Street and Broadway at strategic locations.
- Provide mid block connections from Broadway and Main Street to lanes where appropriate.
- Keep streetscapes eclectic, edgy, and diverse.

DESIGN IDEAS AND OPPORTUNITIES:



Laneway Activation



Enhanced Boulevard



Green Laneway



Enhanced Boulevard



Mid Block Crossing



Enhanced Streetscape

Thoughts or Ideas?
Place Comments On Sticky Notes Here

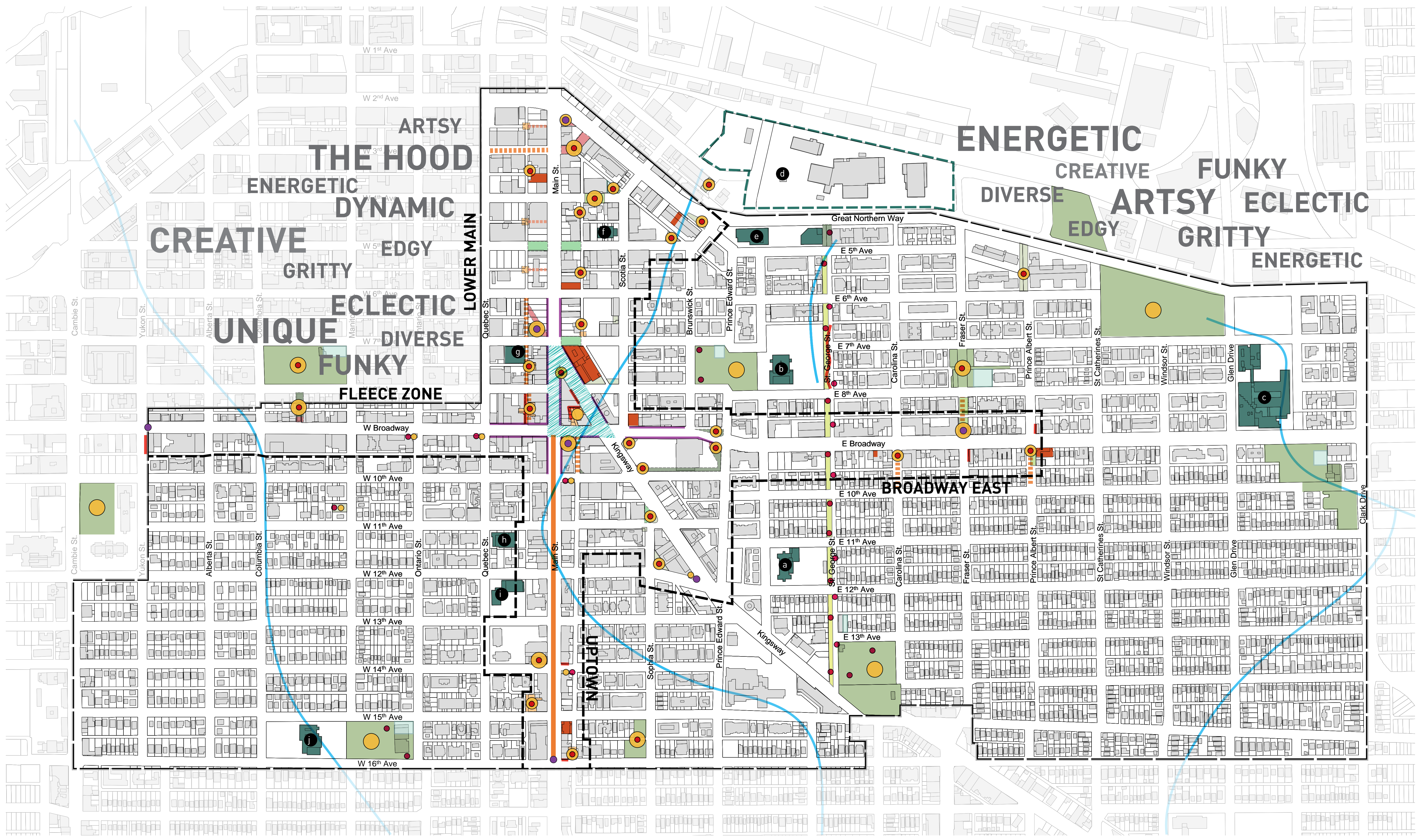
FOR MORE INFORMATION on the Mount Pleasant Community Plan and the implementation program, visit vancouver.ca/mountpleasant



PUBLIC REALM: EMERGING CONCEPTS

PUBLIC OPEN SPACE - PUBLIC ART / COMMUNITY / CULTURE

DRAFT



Legend

- Existing Public Art Mural
- Existing Public Events Road and Laneway Closure
- Existing Community and Cultural Institutions
- Existing School
- Potential Community Gathering
- Potential Public Events Road and Laneway Closures
- Potential Temporary Public Art and Performance Spaces
- Potential Public Art - Iconic and Permanent
- Potential Public Art - Heart of the Community Mosaic
- Potential Public Art as Signage - Relaxing the Signage Bylaws to Encourage Imaginative Building Face Elements at Night

- Nightingale Elementary School
- Mt Pleasant Elementary School
- VCC King Edward Campus
- Great Northern Way campus
- St. Francis Xavier School
- Native Education College
- Sarah McLachlan Music School
- St Patrick's Secondary School
- St Patrick's Elementary School
- Simon Fraser Elementary School

RECOMMENDATIONS:

Existing community and 'Cultural institutions':
The neighbourhood of Mount Pleasant is already home to several important community and cultural institutions in the city such as Heritage Hall, Goh Ballet, the Sarah McLachlan Music School, the community centre on Main and Kingsway (to name a few) as well as numerous galleries and music venues. These spaces and institutions are major contributors to the life of the community and distinguish the neighbourhood from other areas of the city.

Potential public events road and 'Laneway' closures:
These are seen as the natural extension to events that are already beginning to occur within the community of Mount Pleasant, where temporary closures of roads and laneway provide for festival and art uses. These spaces can be returned to their everyday use after such events, but can be augmented by the necessary infrastructure to help facilitate those events.

Potential temporary public art and performance spaces:
These are seen as spaces which can provide opportunities for community and artist-driven projects such as theatre, music and interdisciplinary performances, as well as art installations and festivals. They should be viewed as 'easel' spaces, which provide the necessary infrastructural and institutional support for the robust creativity within Mount Pleasant to be made public.

Potential public art - iconic and permanent:
These are proposed in key locations to provide for large-scale permanent public artworks which are meant to serve as major landmarks for the area. These artworks should be able to reinforce the identity of Mount Pleasant as a community of creative thinkers and makers.

Potential public art - heart of the community 'mosaic':
This is suggested as a way to reinforce the triangle between Kingsway, Main and Broadway as the epicenter of a vital and imaginative community, where temporary painting of the sidewalks and streets can create an ever-changing environmental experience for visitors and users of the area. This would be an opportunity for artists and community groups to work together to create these temporary masterpieces, in a spirit of renewable excitement and empowerment.

Potential public art as signage - relaxing the signage bylaws to encourage imaginative building face elements at night:
This is proposed to encourage businesses to work with artists to create imaginative and extraordinary commercial signage which will simultaneously add to the night-time experience and allow the development of a vital and exciting exploration of that media.

DESIGN IDEAS AND OPPORTUNITIES:



Community Gathering - Movie in the Park



Special Event Road Closure



Potential temporary public art and performance



Community Mosaic



Public Art - Iconic and Permanent



Public Art as Signage

Thoughts or Ideas?
Place Comments On Sticky Notes Here

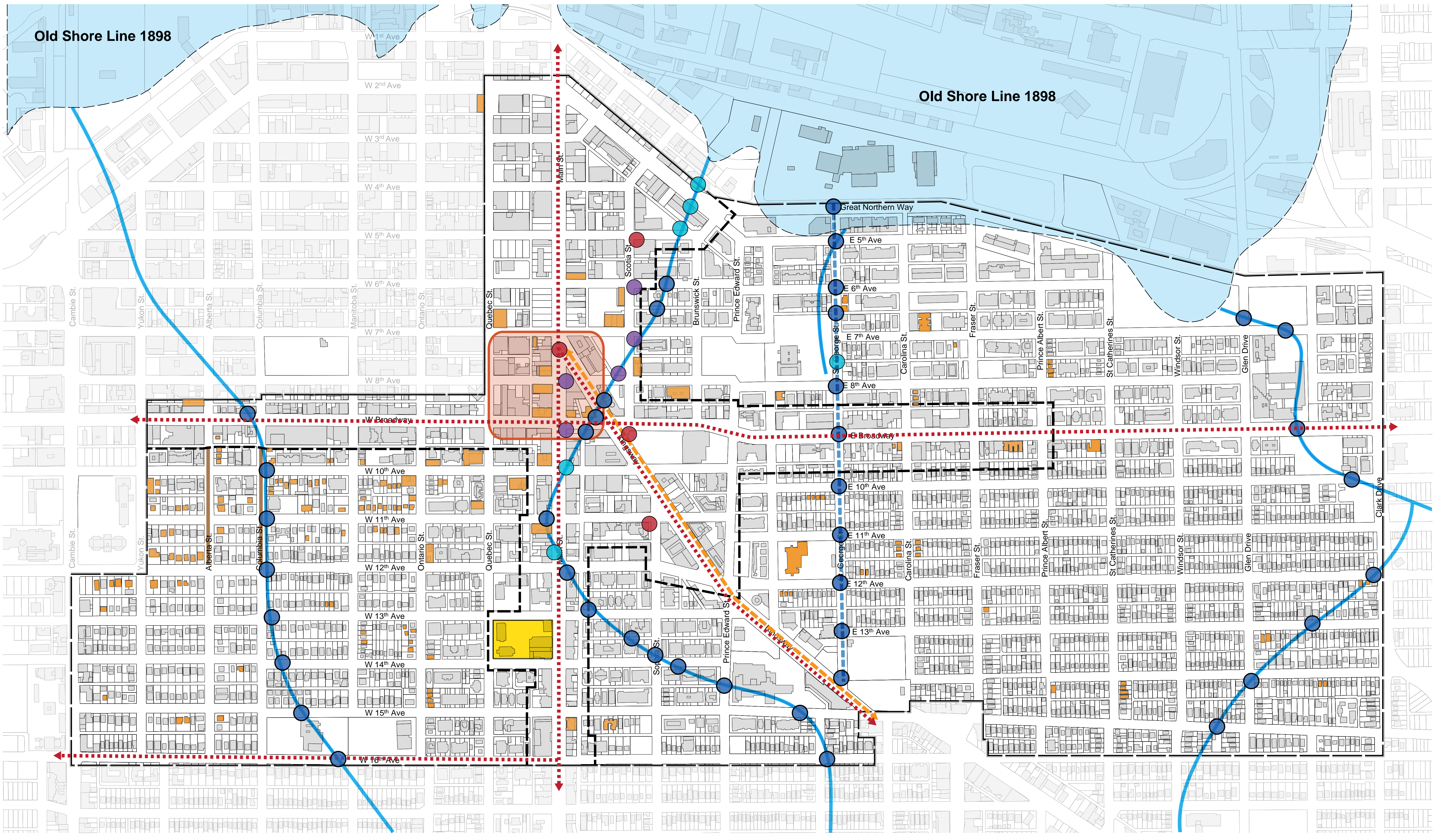
FOR MORE INFORMATION on the Mount Pleasant Community Plan and the implementation program, visit vancouver.ca/mountpleasant



PUBLIC REALM: EMERGING CONCEPTS

CELEBRATE THE RICH HISTORY OF MOUNT PLEASANT

DRAFT



Legend

- Brewery Creek Commemoration
- Brewery Creek Cairnes
- Mount Pleasant Historical Signage
- Site of The Mount Pleasant Car Barn
- Historic Mt Pleasant Village
- Heritage Buildings
- Creek
- Proposed Creek Commemoration with opportunities to celebrate the water
- - - Historic Street Car Route
- - - Historic Indigenous Trail & Wagon
- - - Historic Brick/Granite Paver Street
- - - Proposed St. George Railway

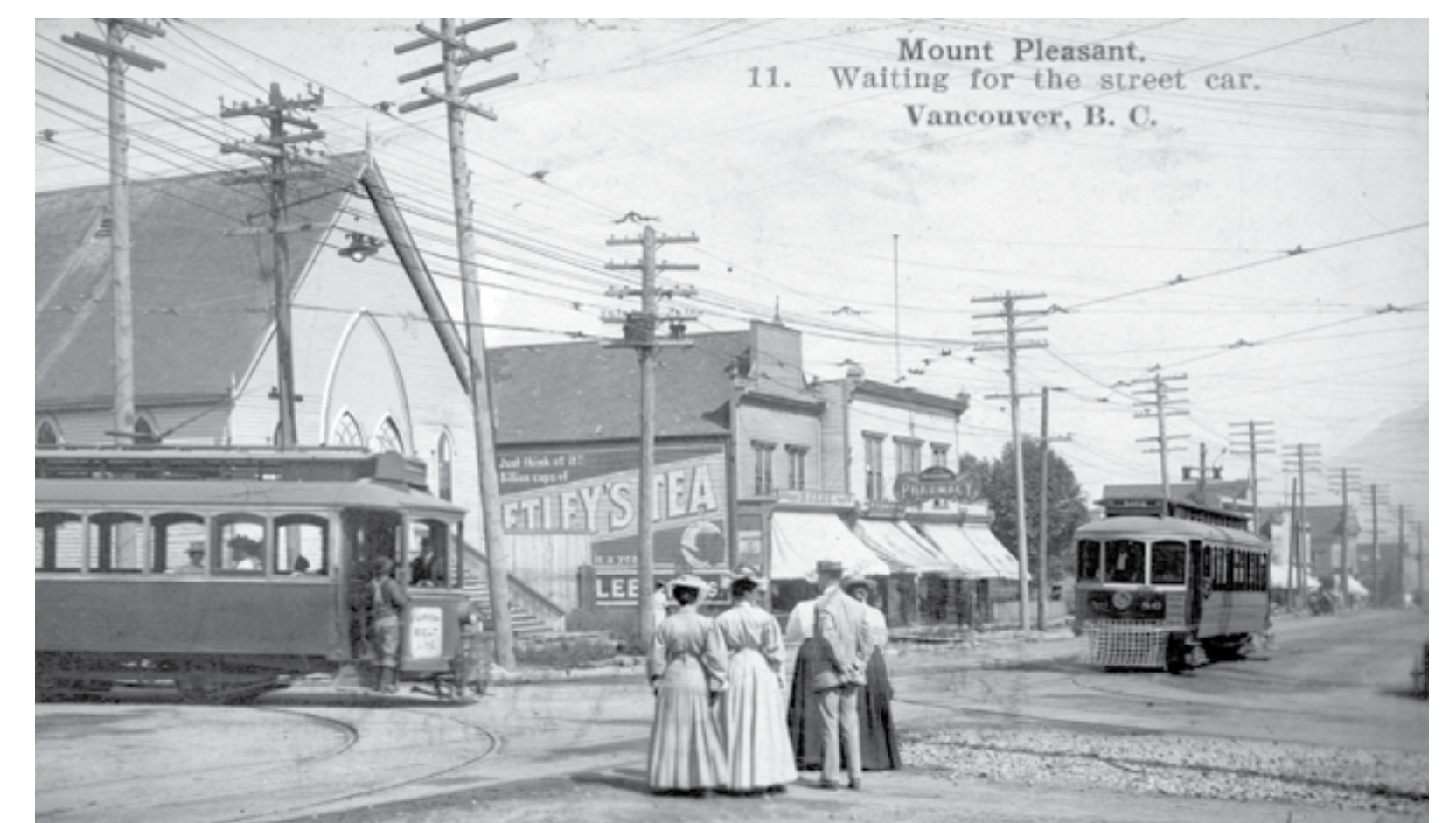
RECOMMENDATIONS:

- Celebrate and reinforce original creek environments by
 - o Public Art
 - o Rain Gardens
 - o Water / drinking fountains
 - o Interpretive panels
- Celebrate original Mount Pleasant Car Barn Heritage at future Main / 13th and 14th development site.
- Reinforce Sidewalk Paving Patterns to Reflect Small Scale lots and Historic Patterns
- Celebrate and reinforce original streetcar locations in new/existing public realm with
 - o Public Art
 - o Paving
 - o Interpretive Panels
 - o Lighting

HISTORICAL REFERENCES:



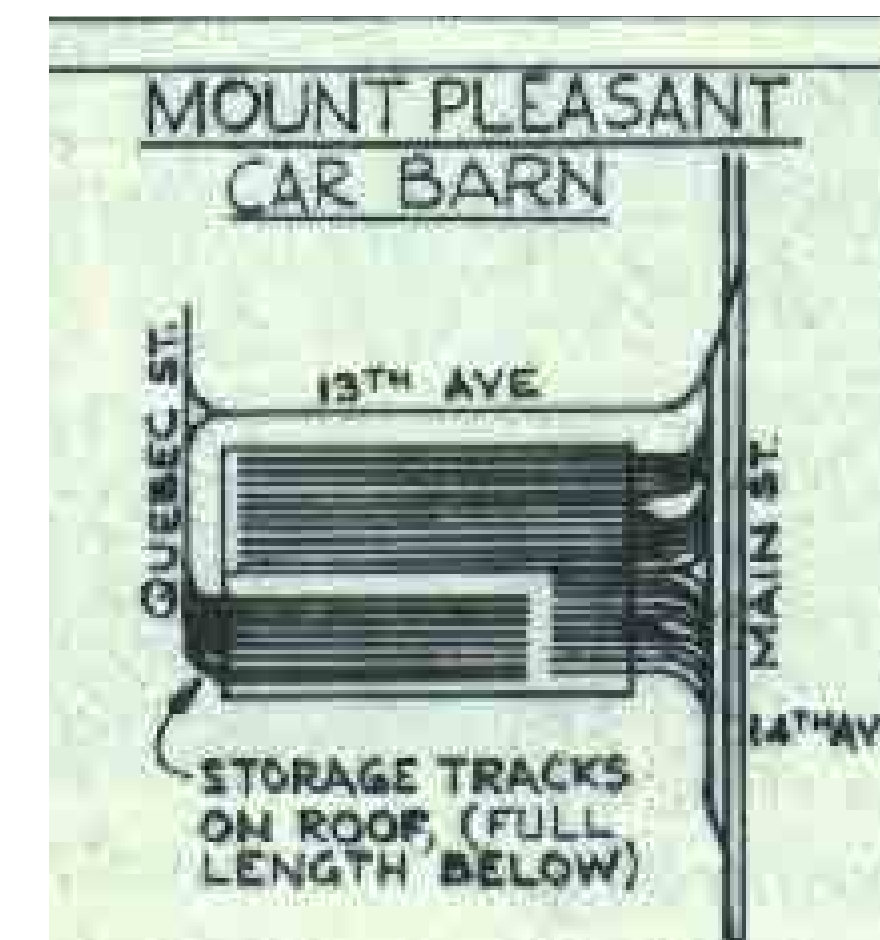
Cedar Cottage Brewery



Street Car



Creeks



Mount Pleasant Car Barn



Heritage Hall



Welcome Mount Pleasant Clock

Thoughts or Ideas?
Place Comments On Sticky Notes Here

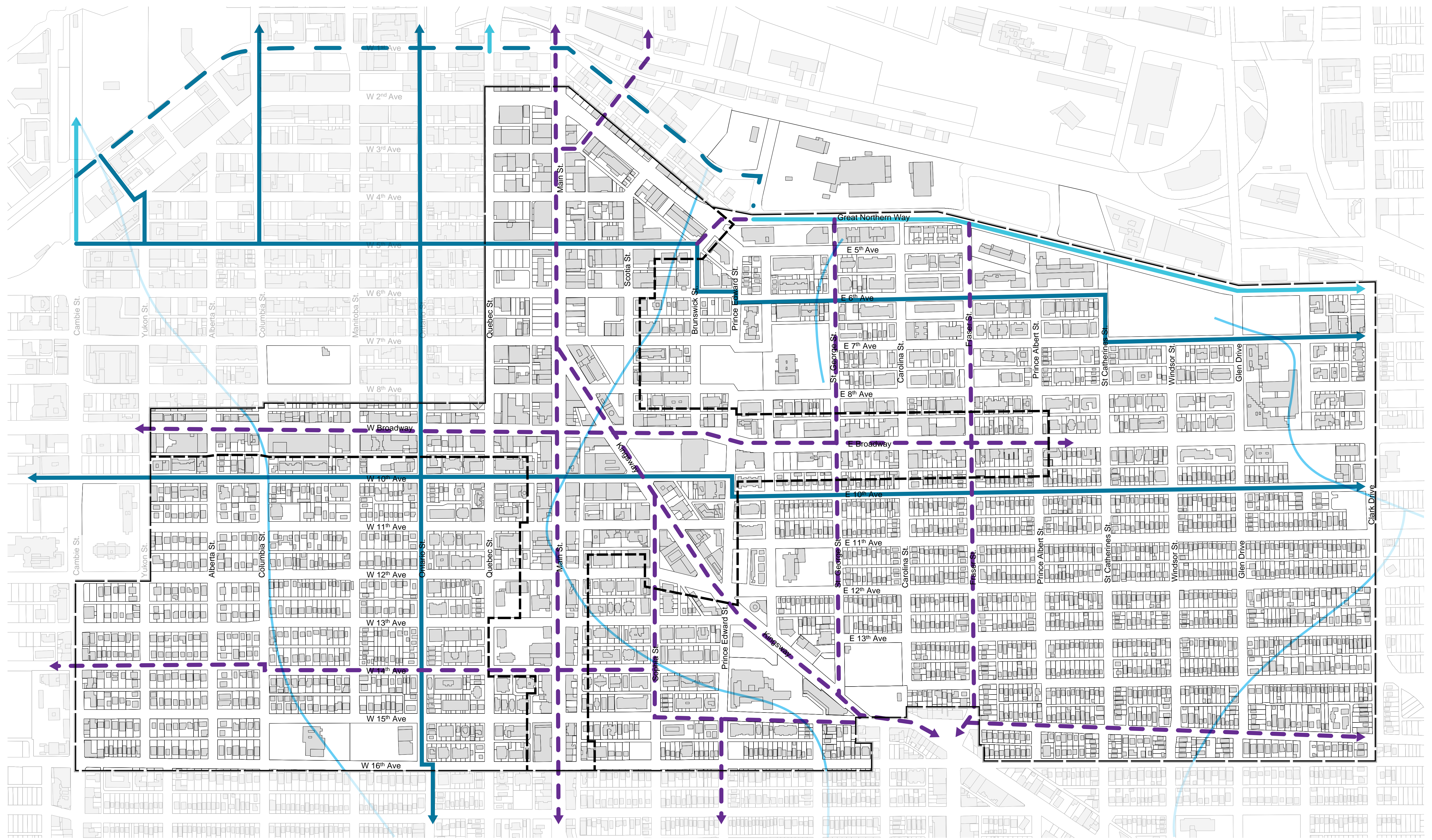
FOR MORE INFORMATION on the Mount Pleasant Community Plan and the implementation program, visit vancouver.ca/mountpleasant



PUBLIC REALM: EMERGING CONCEPTS

PUBLIC OPEN SPACE - CYCLING NETWORK

DRAFT



Legend

- Existing Local Street Bikeways
- - - Existing Separated Bikeways
- - - Existing Painted Bike Lanes
- - - Potential Future Bike Route

RECOMMENDATIONS:

- Upgrade and expand the cycling network to efficiently connect people to destinations.
- Build bike routes that feel comfortable for people of all ages and abilities.
- Embrace the bike by increasing bike parking in plazas, parks, laneways etc.

DRAFT

DESIGN IDEAS AND OPPORTUNITIES:



Bikeway

Photo: Paul Krueger



Bike Rack



Separated Bike Lane



Bike Repair Station

Photo: Paul Krueger



Bike Lane



Public Bike Share System

Thoughts or Ideas?
Place Comments On Sticky Notes Here

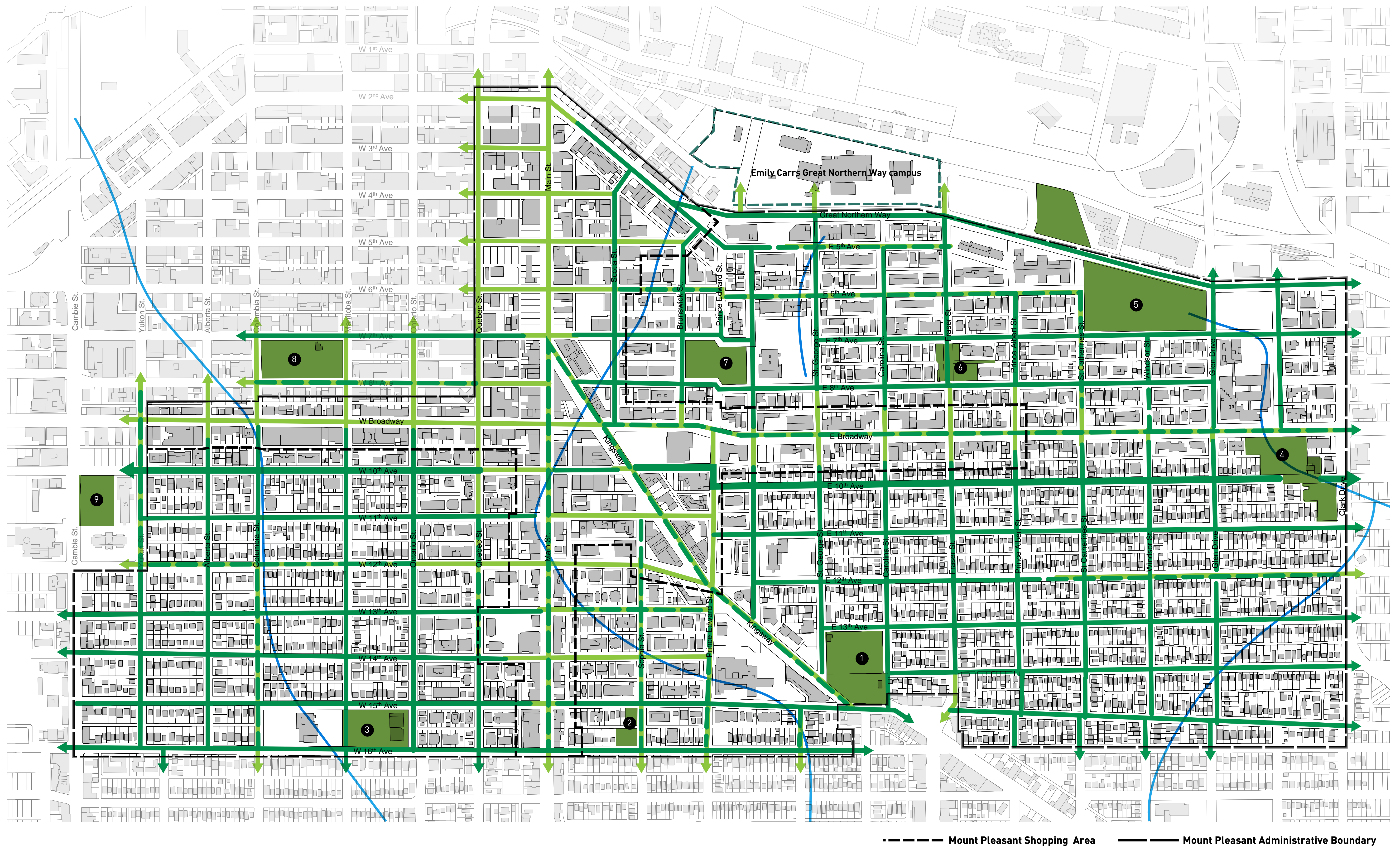
FOR MORE INFORMATION on the Mount Pleasant Community Plan and the implementation program, visit vancouver.ca/mountpleasant



PUBLIC REALM: EMERGING CONCEPTS

PUBLIC OPEN SPACE - GREEN CANOPY

DRAFT



- Existing Great Street Tree Network
 - Partial Street Tree Network
 - Sporadic Street Tree Network
 - Existing Park
- ① Robson Park
 - ④ China Creek South Park
 - ⑦ Guelph Park
 - ② Tea Swamp Park
 - ⑤ China Creek North Park
 - ⑧ Jonathan Rogers Park
 - ③ Mount Pleasant Park
 - ⑥ Sahalli Park
 - ⑨ City Hall Park

RECOMMENDATIONS:

- Preserve: protect all existing mature street trees throughout as new development occurs.
- Plant street trees along Main St. and Broadway where possible and appropriate.
- Encourage planting street trees in a healthy and sustainable manner.

DRAFT

STREET TREE NETWORK



Street Tree Network



Street Tree Network, 5th Ave and Scotia Street



Street Tree Network, 10th Ave



Street Tree Network, Broadway and Prince Edward Street



Street Tree Network, Mt. Pleasant Neighbourhood House, Broadway



Street Tree Network

Thoughts or Ideas?
Place Comments on Sticky Notes Here

FOR MORE INFORMATION on the Mount Pleasant Community Plan and the implementation program, visit vancouver.ca/mountpleasant



DRAFT



Artist Rendering - Potential Park and Plaza at Main Street and 7th Ave



Artist Rendering - Potential Plaza at Main Street and 3rd Ave



Artist Rendering - Potential Parklette at Lane and 6th Ave



Artist Rendering - Potential Street to Park/Plaza at Fraser and Broadway East



Artist Rendering - Potential Future Broadway Subway Transit Station



Artist Rendering - St. George Rainway Concept

Thoughts or Ideas?
Place Comments On Sticky Notes Here

FOR MORE INFORMATION on the Mount Pleasant Community Plan and the implementation program, visit vancouver.ca/mountpleasant

