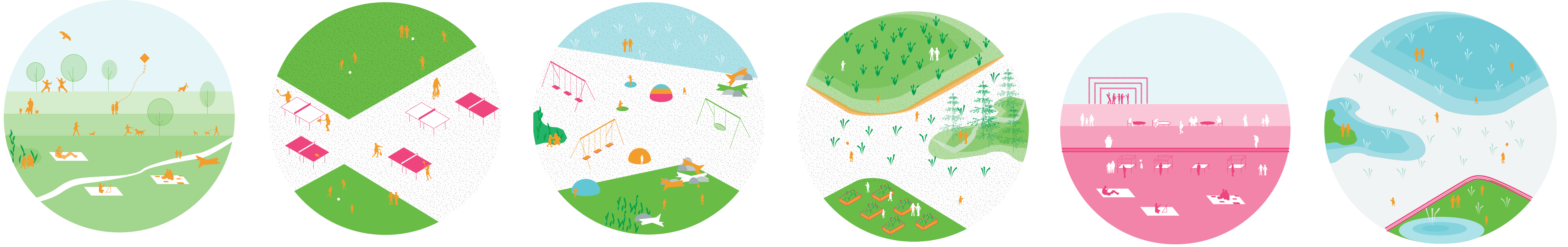


1 WELCOME



A NEW PARK AT OAKRIDGE CENTRE

The redevelopment of Oakridge Centre will create a new 9 acre park at ground level and on the roof of the redevelopment. We are looking for your input.

Please fill in a questionnaire today or online at vancouver.ca/oakridge-park.

In summer 2018 a preferred park concept will be considered by the Vancouver Park Board for decision.

歡迎

渥烈治中心的重建項目將在地面和新建築物的屋頂上提供9英畝的公園空間。我們現正尋求您的意見。請在vancouver.ca/oakridge-park線上填寫問卷。

PARK PLANNING PROCESS



2 DECEMBER 2017: PUBLIC FEEDBACK

MOST SUPPORTED ACTIVITIES, ELEMENTS & COMPONENTS

In December, over 300 people attended open house events and 694 people filled out a questionnaire either in person or online.

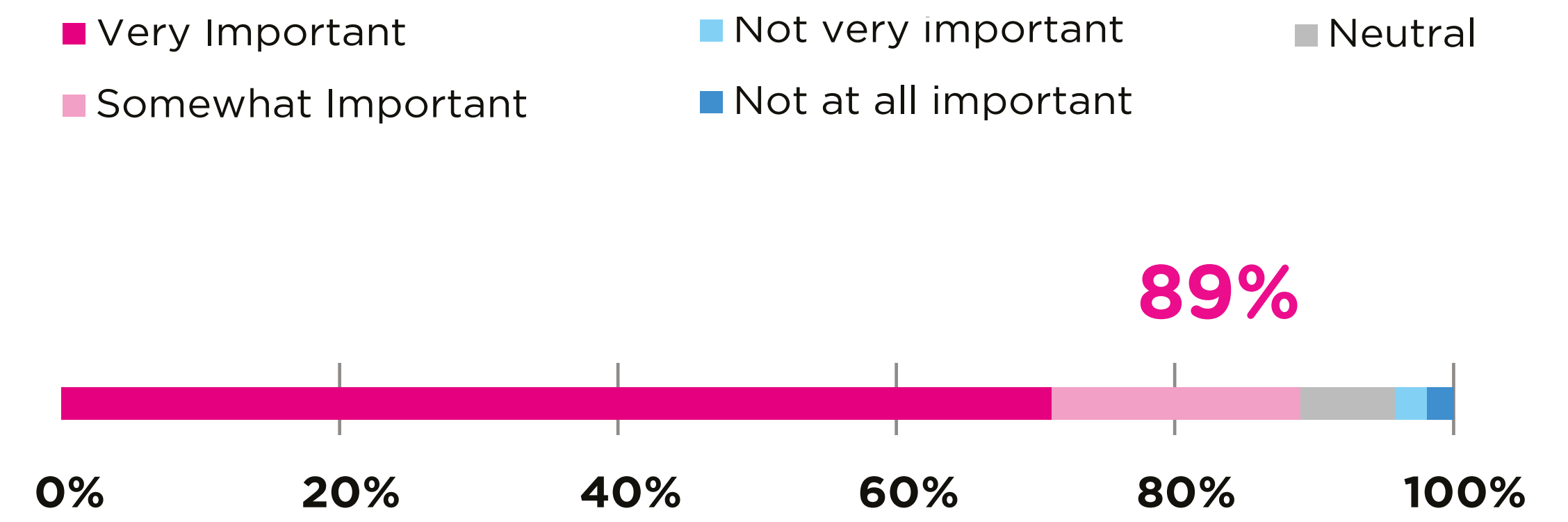
This feedback helped determine the type of activities, elements and components for the new park; and inform the park design principles (on Board 6) and draft concept presented (on Boards 10). This input was also used to help create a vision for the park (on Board 6).

The questionnaire asked “If you could use one word or short phrase to describe your ideal future for Oakridge Centre park, what would it be?”

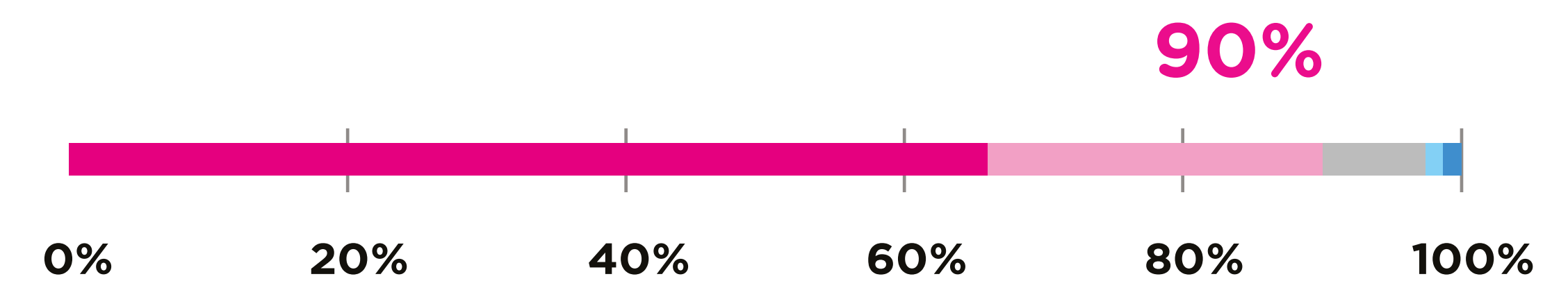
Top responses included:



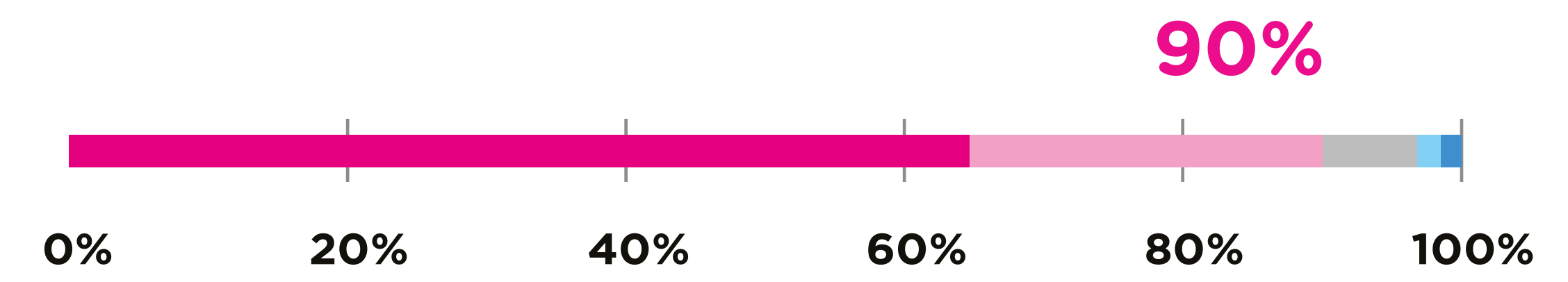
2017年12月的開放日有超過300人參加，我們聽到的公眾意見也有包括694份的問卷回應。這將會進一步幫助提供公園的關鍵設計原則與概念以及決定種種在新公園的活動，元素和構成部分。



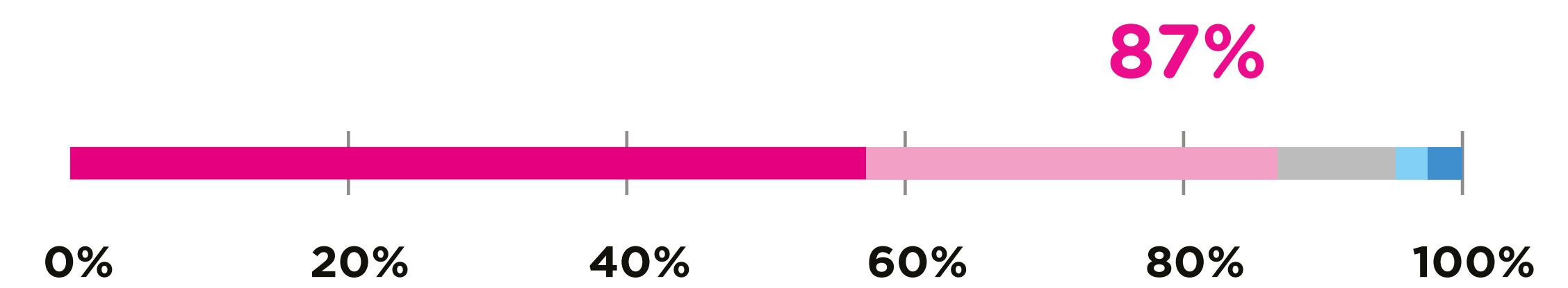
HABITAT *FOR BIRDS & POLLINATORS
棲息地



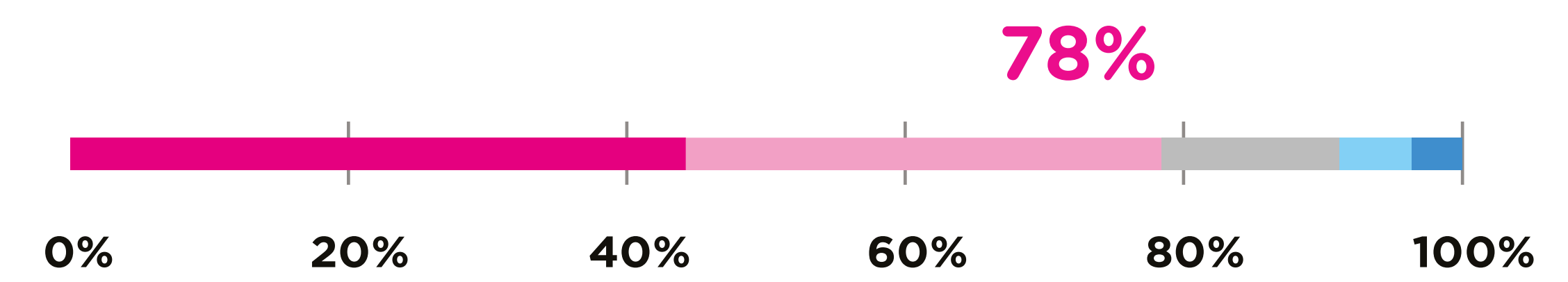
LUSH PLANTING & LARGE TREES
茂盛青蔥植物及大樹



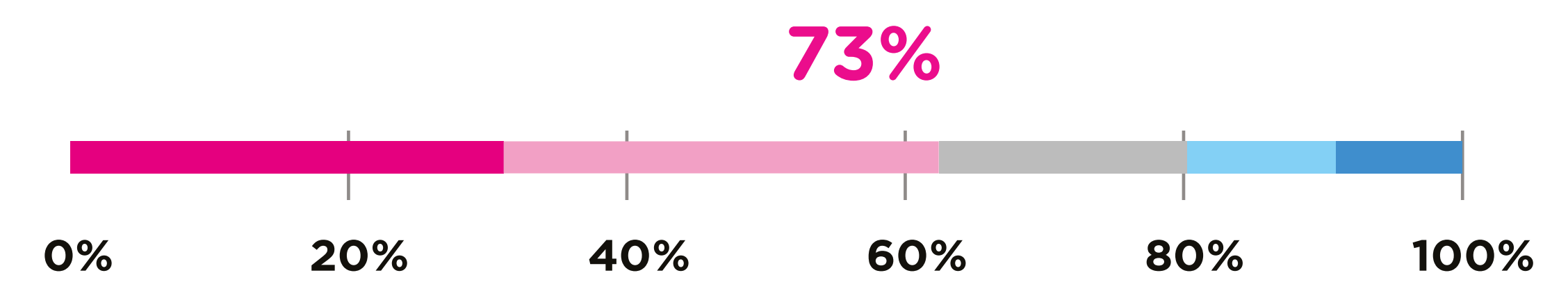
PATHWAYS THROUGHOUT
貫通路徑



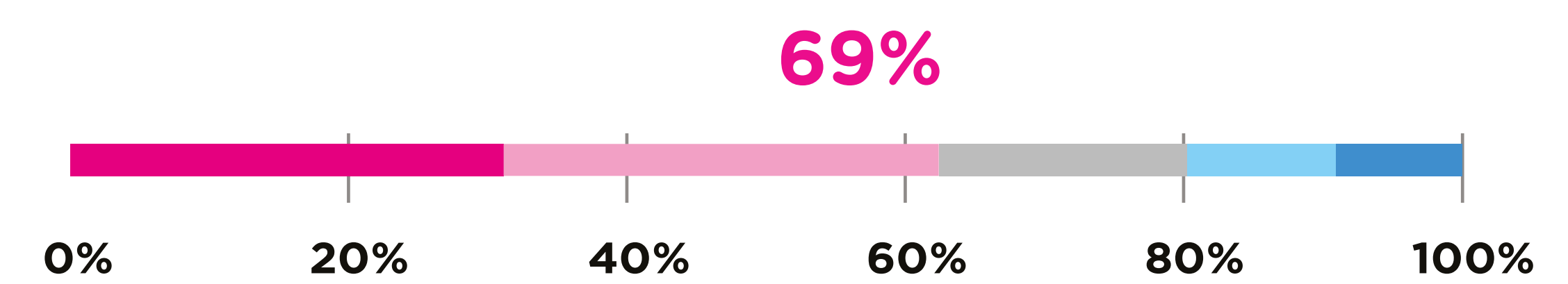
MULTI-USE PASSIVE SPACE
多用途被動空間



NATURAL PLAY ELEMENTS
自然的游樂元素



EVENT SPACE *FOR SMALL SCALE EVENTS
小組活動空間



LARGE LAWN *FOR PICKUP SPORTS
大型開放式草坪區

3

PUBLIC FEEDBACK

DRAFT PARK PRINCIPLES QUESTIONNAIRE FEEDBACK

Eight draft guiding principles were developed that capture the overall vision for the future park and provide direction for the park design. The following comments are from respondents that highlight recommendations for each of the eight draft principles.

ACCESSIBLE & INVITING

“Accessible! to all abilities and age groups- include families and all age ranges.”

SAFE & CONNECTED

“A safe playground, far away or protected from the traffic area”

LIGHT & SHADE

“Many trees - not just for shade, but for birds, and wildlife”

A LUSH & DIVERSE LANDSCAPE

“Functional landscapes - providing ecosystem services and green infrastructure for the city.”

INNOVATIVE

“How can opportunities such as rainwater management, on site energy production, food production and natural play integrate into the plan? These are key aspects that could help create an innovative park.”

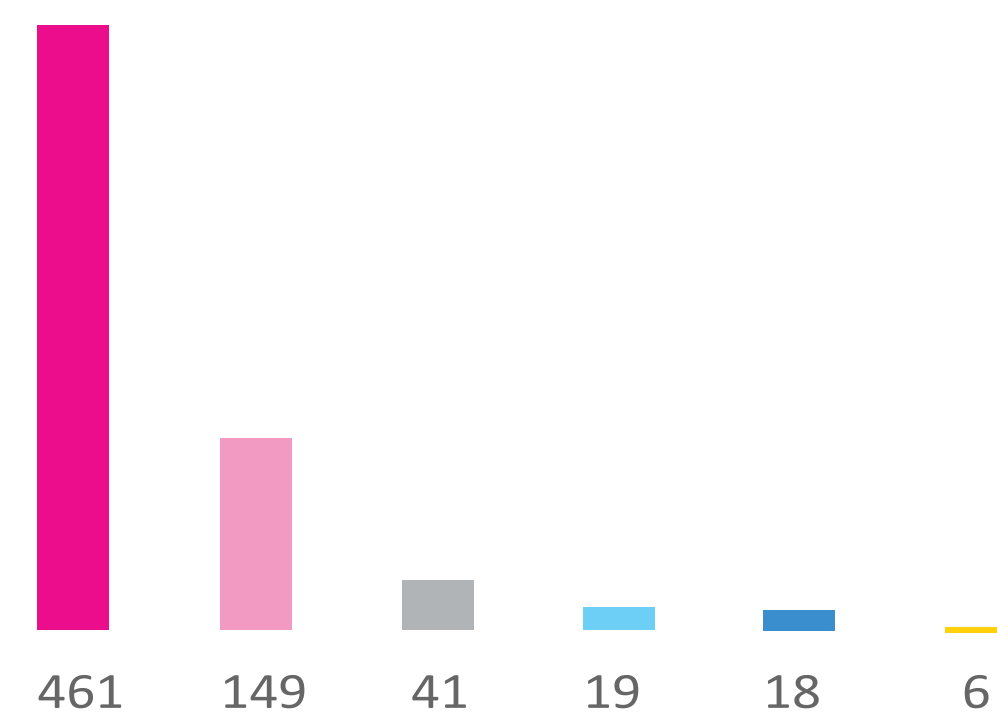
RESILIENT

“Incorporate green infrastructure: rainwater and habitat, purification and flood and storm water management, etc. Parks can also be great places to teach and learn.”

STRONGLY AGREE SOMEWHAT AGREE NEUTRAL SOMEWHAT DISAGREE STRONGLY DISAGREE DONT KNOW



88%

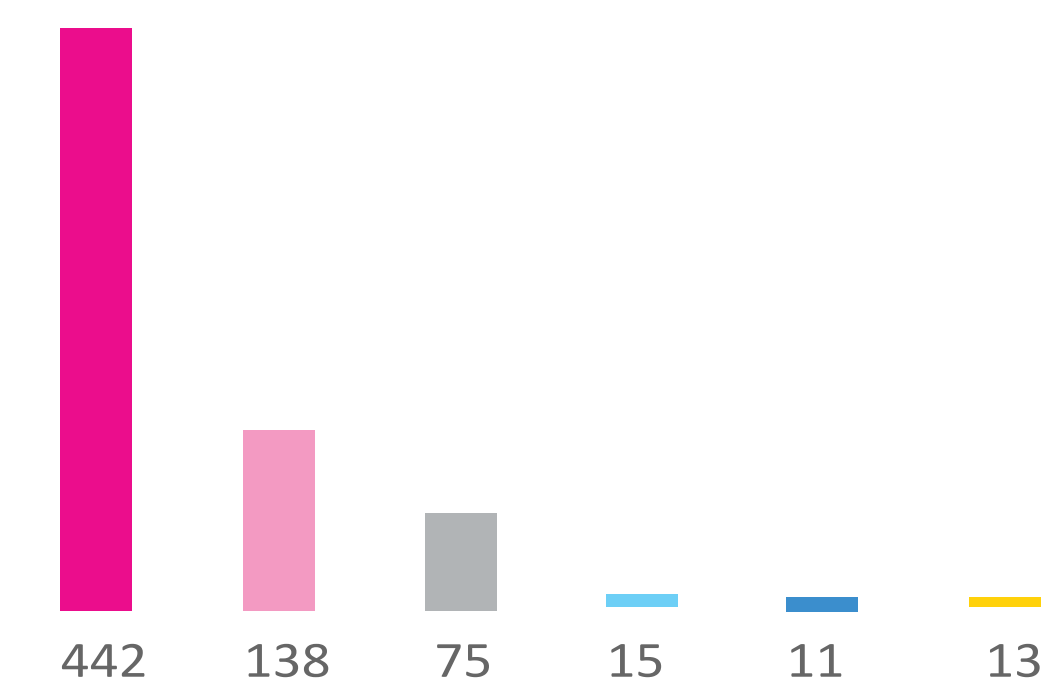


ACCESSIBLE & INVITING

方便和迎合需要



84%

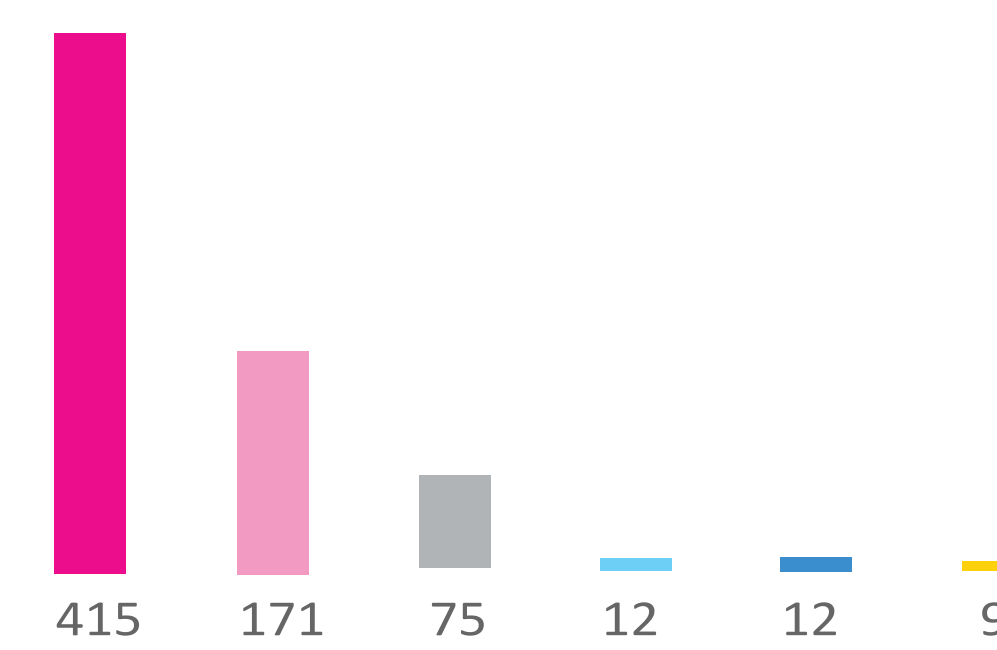


SAFE & CONNECTED

安全性和關聯性



84%

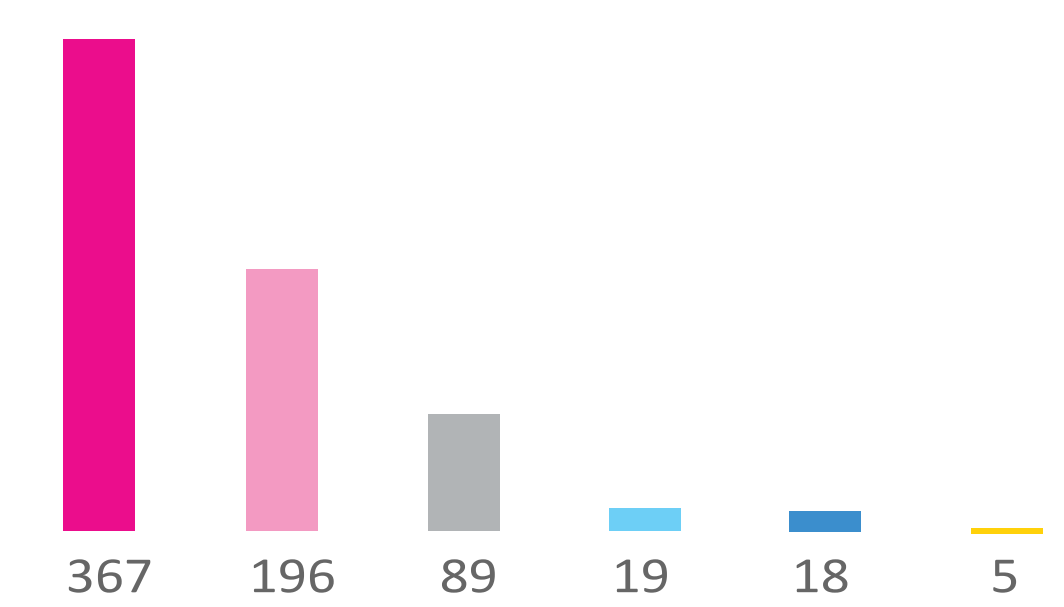


LIGHT & SHADE

提供日光及蔭涼處



81%

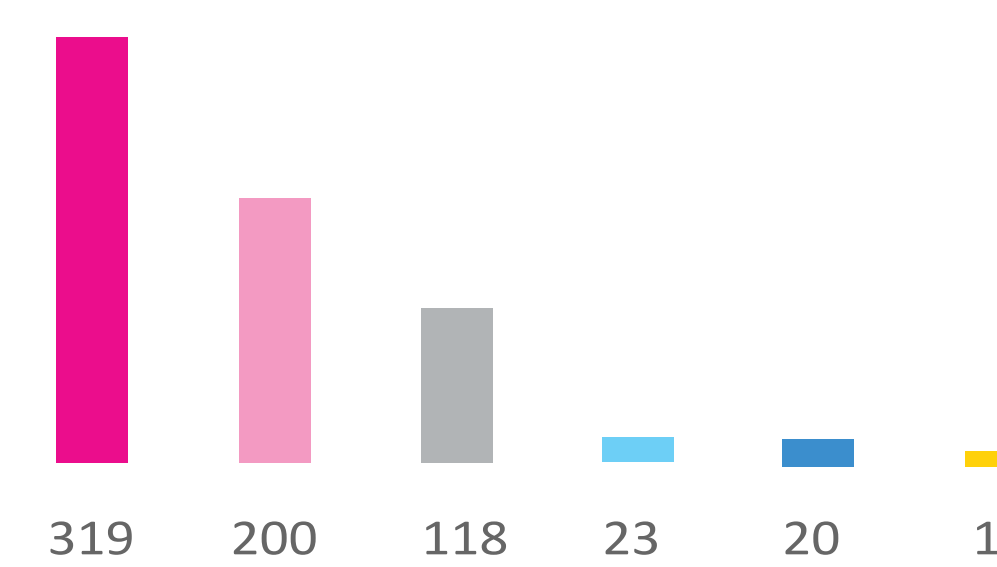


LUSH & DIVERSE LANDSCAPE

茂盛青蔥和各式各樣的景觀



75%

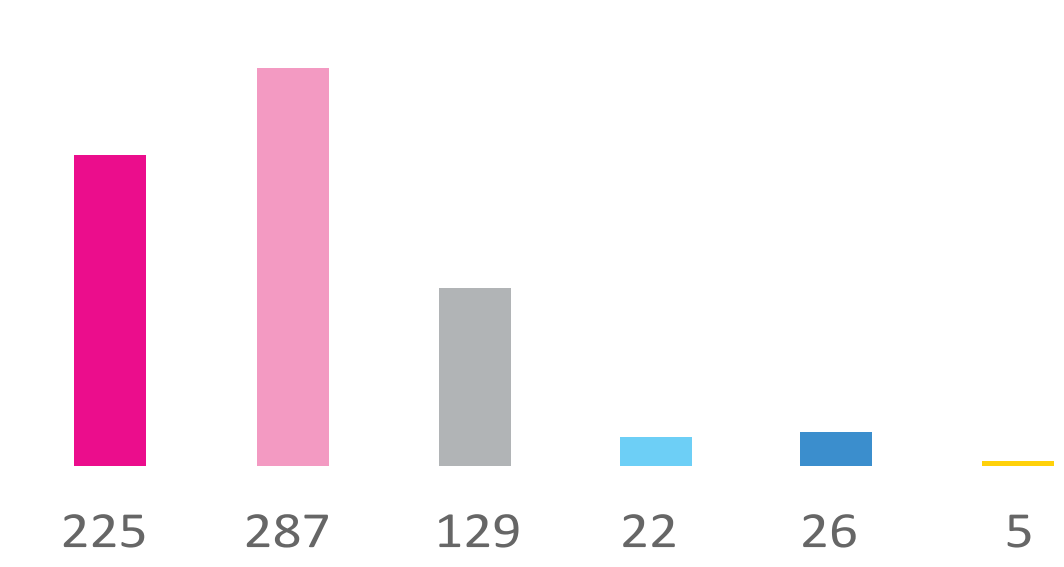


LIVELY SPACES & EDGES

生動的空間和邊緣地帶

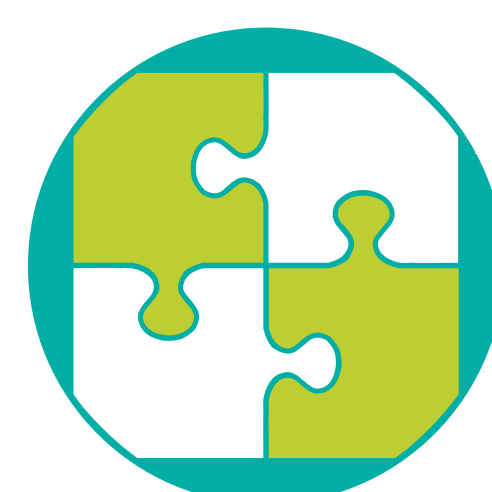


74%

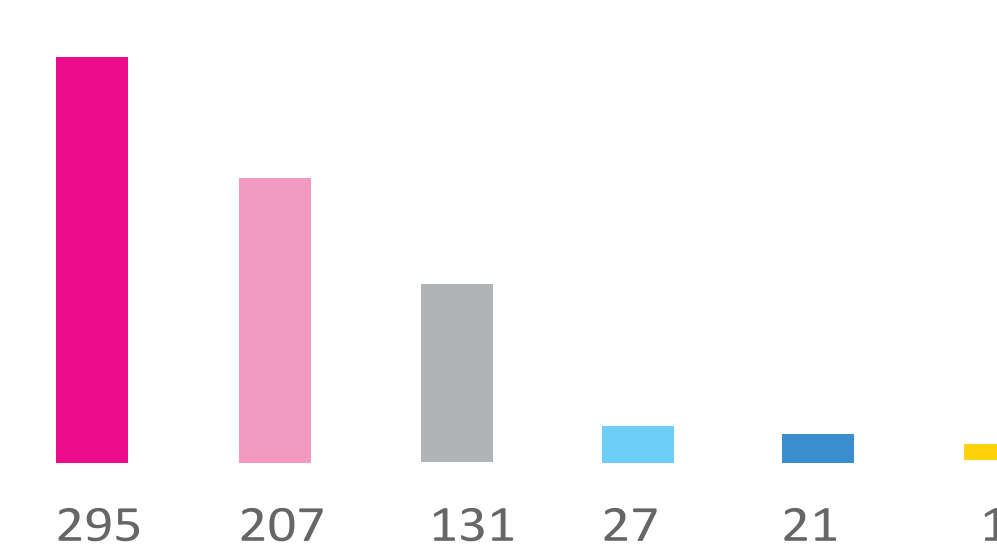


INNOVATIVE

創新



72%

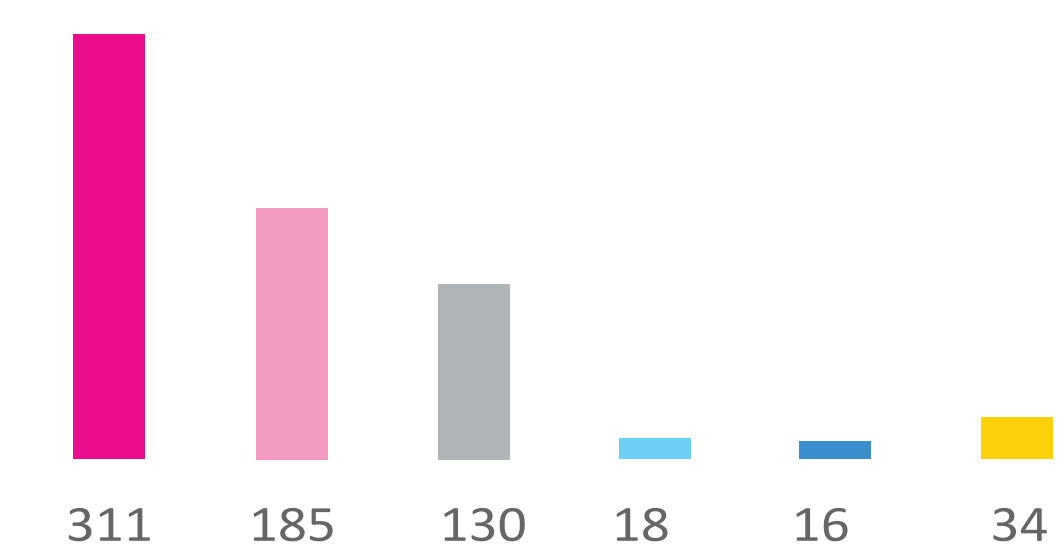


ONE PARK, MANY PARTS

一個公園，不同部份



72%

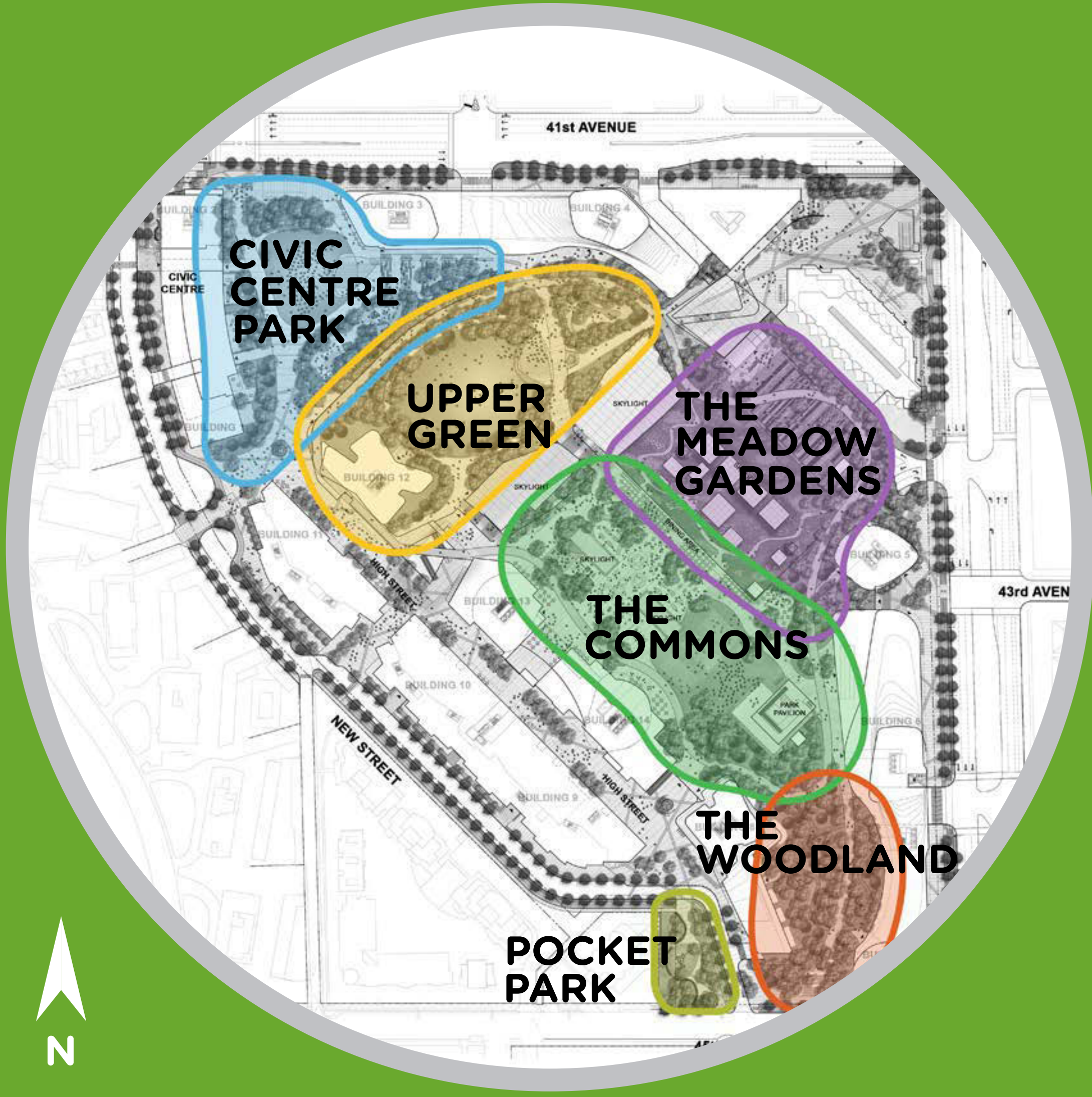


RESILIENT

彈性

4

PUBLIC FEEDBACK



Overall, there was strong support for the six proposed concept areas presented to the public in December, 2017.

A majority of respondents were either “very satisfied” or “satisfied” (80%) with the overall park proposal.

One of the most prevalent themes was a desire to incorporate natural elements throughout the park, and to provide a variety of seating.

2017年12月向公眾提出的六種渥烈治公園草案概念已獲得公眾強大的支持。

最受歡迎的主題之一是希望將自然元素融入整個公園，並提供各種座位。

THE WOODLAND: 85% SUPPORT



“Expand this design through the entire park”

“... I want more trees so this feels like a mini forest.”

“I really like this -- natural, simple, peaceful, provides a more natural habitat for birds, animals, insects and...us!”

THE MEADOW GARDENS: 81% SUPPORT



“The rows of boxes and rows of trees contradict the spirit of a natural park. Something more flowing and natural.”

“Include interpretive elements to showcase various elements and encourage public participation.”

“...creating a natural habitat for birds [and] pollinators is so important.”

UPPER GREEN: 77% SUPPORT



“It seems like a lot of lawn and not much natural planting.”

“More shade cover... it would be hot up there on a summer day.”

“How do you get up? How steep is the ramp? Can I push my stroller up there?”

POCKET PARK: 68% SUPPORT



“It’s too hard, gray...empty.”

“How clear it will be from this vantage point that there is way more park above on the roof?”

“How about something a bit more natural for this area? More logs, rocks..”

THE COMMONS: 67% SUPPORT



“Are there areas for ‘natural play’ - things to climb on? Places to build forts? Places for imaginary play?”

“All weather covers so people will hang out in the space when it rains”

CIVIC CENTRE PARK: 63% SUPPORT

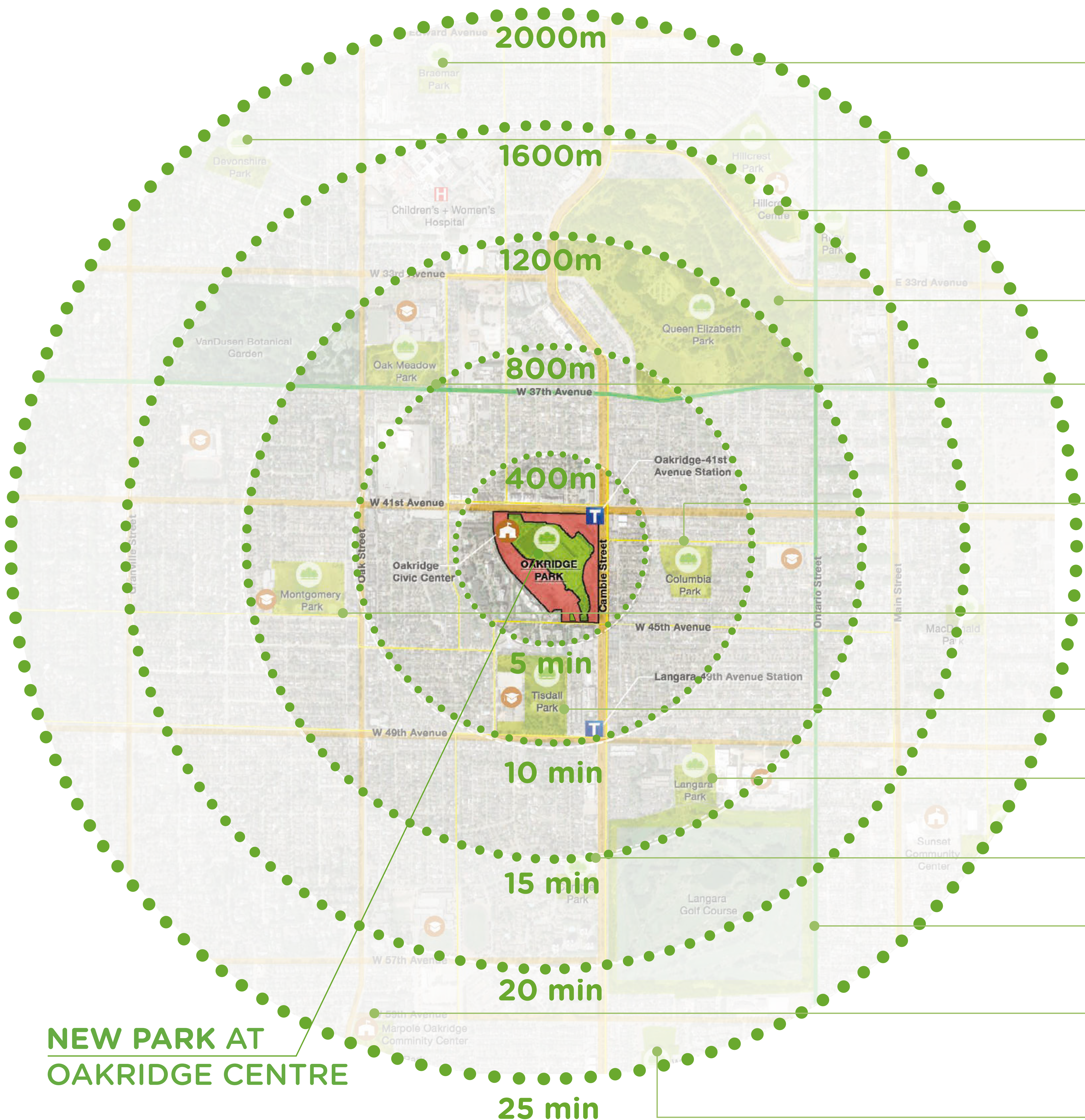


“Lots of seating, besides the giant steps, would be better for seniors.”

“This park, as it looks like, could be anywhere. Doesn’t feel like Vancouver. Use our uniqueness: huge trees, big vistas, ocean, stone.”

5

PARK CONTEXT

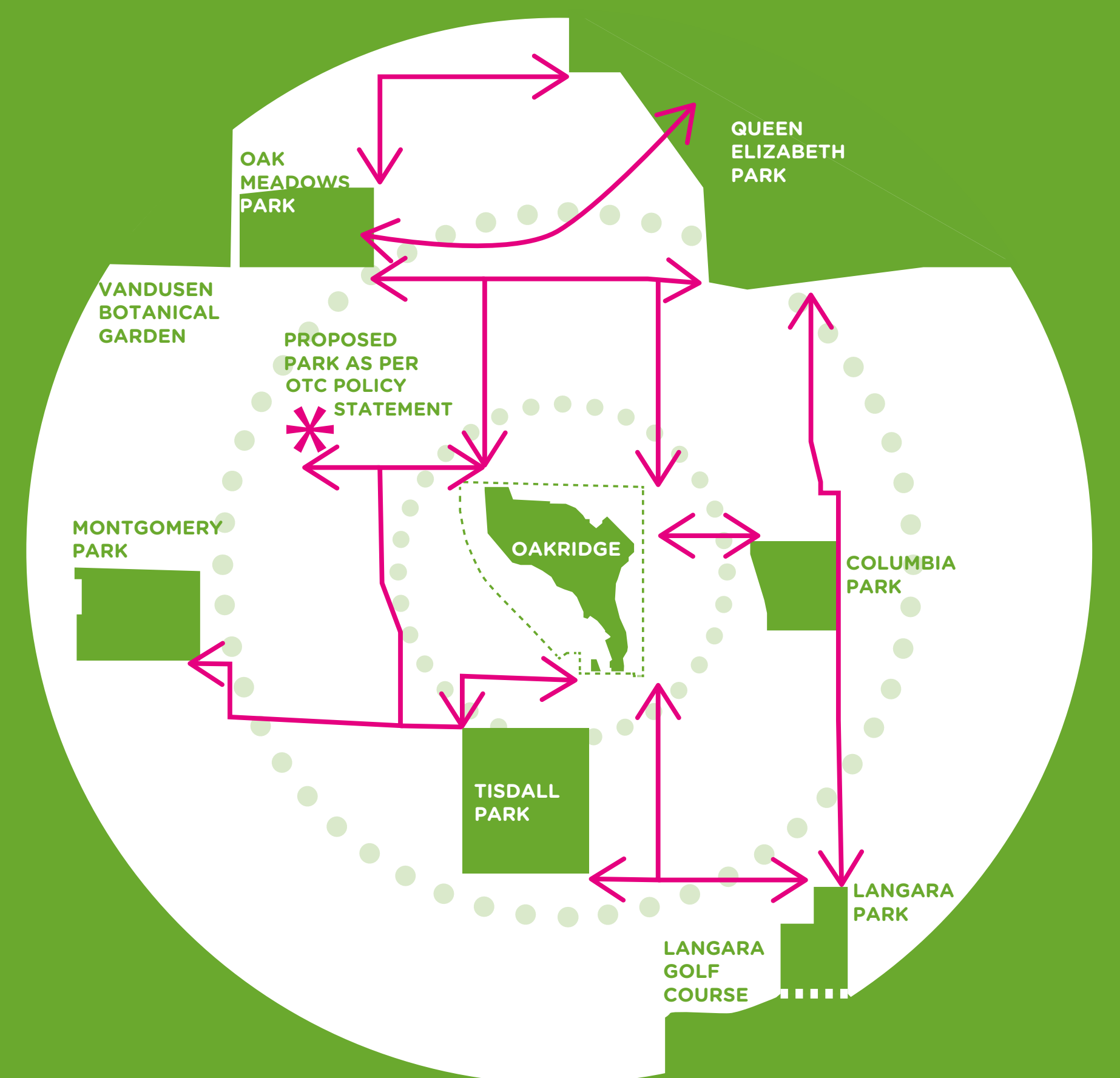


Braemar Park	3.11 acres
Field house, fields	
Devonshire Park	3.8 acres
Open Space	
Hillcrest Park	18.6 acres
Community Centre, rink, pool, fields, running path	
QE Park	130.7 acres
Sports and games, golf, tennis, dogs off-leash	
Oak Meadows Park	11.7 acres
Fields, walking path, dogs off-leash	
Columbia Park	6.9 acres
Playground, fields, wading pool	
Montgomery Park	9.9 acres
Sports fields, field house, playground	
Tisdall Park	12.4 acres
Fields, wellness circuit	
Langara Park	2.9 acres
Open space	
Cambie Park	2.3 acres
Open space	
Langara Golf Course Perimeter Path	1.5 acres
Path, playground, tennis	
Oak Park	12.9 acres
Community Centre, sports and lit fields, tennis, playground and spray park	
Winona Park	13.1 acres
Field house and fields, playground	

NEW PARK AT OAKRIDGE CENTRE

THE PARK IN THE CONTEXT OF CAMBIE CORRIDOR

- The Cambie Corridor is the largest growth area in the city outside of downtown. Over 45,000 new residents are expected by 2041, more than doubling the current population.
- Proposed densification in the Municipal Town Centre (MTC) around Oakridge Centre will consist of townhouses, and a range of building heights including towers up to 18-stories. This will bring many new residents to the surrounding blocks.
- The Cambie Corridor currently includes a number of neighbourhood parks, as well as Queen Elizabeth Park.
- The new park at Oakridge, along with four other future parks, will help to address growing demand for park space in the Cambie Corridor.
- 甘比走廊將是未來30年的主要發展地區。渥烈治中心的新公園以及其他四個未來的公園將有助於解決甘比走廊公園空間不斷增長的需求。



6a

DRAFT DESIGN PRINCIPLES



ACCESSIBLE AND INVITING

- Accommodate all ages and levels of fitness and ability.
- Invite everyone into the park, with minimum of six highly visible and easily accessed entry points from the street, transit station and mall.
- Ensure the park is publicly accessible during standard park hours, regardless of whether the mall is open and ensure universal access to all areas of the park.
- Provide easy wayfinding from space to space and entry to exit.
- Clearly delineate public and private spaces.
- Extend the park to the entry points through design and programming.



FLEXIBLE

- Ensure the park allows for a wide range of things to do, from social, active and fitness focused to calm, peaceful and restorative.
- Design a park that can both host special events and support everyday neighbourhood use at the same time.
- Design a park that can adapt to demographic trends and activity changes over time.
- Design for all weather use.
- Recirculate and reuse water where possible.
- Include multipurpose spaces.



SAFE & CONNECTED

- Ensure the park is a safe environment.
- Connect and animate where all park users feel comfortable to and through the park.
- Optimize views into the park and between park spaces.



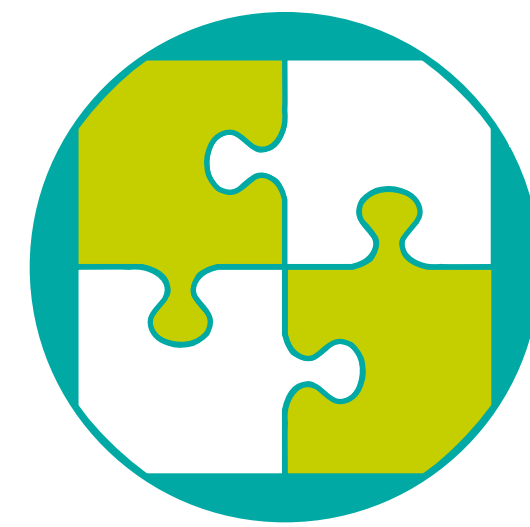
BALANCE LIVELY & TRANQUIL SPACES

- Create strong indoor - outdoor relationships between public amenities, including the Civic Centre, and the park.
- Animate places in the park by matching them with lively building edges.
- Pair quieter park uses with office and residential uses.



A LUSH & DIVERSE LANDSCAPE

- Create a biodiverse, lush urban forest and connection to nature.
- Ensure large canopy trees will thrive on all levels of the park.
- Harness, use and celebrate rainwater.



ONE PARK, MANY PARTS

- Weave together a series of unique but interconnected spaces into a coherent whole.
- Use site design, views and programming to unify the park.



LIGHT AND SHADE

- Locate activities considering which are least impacted by building shadows.
- Design a landscape that responds to varying sun and shade patterns.
- Provide sufficient shelter from sun and rain.



INNOVATIVE

- Design a destination park that redefines what is possible in a landscape on top of a building.
- Deliver park services in new and engaging ways.
- Create unexpected nature on a rooftop.

Vision

The new park at Oakridge Centre will provide a diverse and welcoming collection of park spaces balancing tranquil and active uses strongly connected by an unexpected rooftop pacific-northwest landscape.

It will ensure vibrant interaction between the adjacent civic centre and the shopping mall uses to create a lively city-wide destination while also serving the daily park and recreation needs of nearby residents.

公園設計草議原則



方便和迎合需要

- 適合不同年齡，能力和體能的人士參與。
- 提供便利的公園入口，至少設置六個顯眼的行人通道出入口。從街道, 交通站和商場都可以很方便的進出公園。
- 確保公園在標準開放時間內市民都可隨時使用。無論商場是否開放，都確保市民可以享用所有公園的空間。
- 確保公園內每個部份都可以方便的出入。
- 提供簡易的公園指示，方便尋找公園不同的位置和進入口。
- 明確的界別私人和公共空間。
- 通過設計和活動安排把公園擴展到入口點。



彈性

- 確保公園容許多樣化類型的活動，從社交，活躍和健身到平靜和復原的不同性質用途。
- 設計一個既可以舉辦特別活動又可以同時支持每日社區使用的公園。
- 設計一個能適應人口趨勢和活動變化的公園。
- 全天候使用設計。
- 在可能的情況下再循環和再利用水。
- 包含多用途空間。



安全性和關聯性

- 確保公園環境的安全，而且被市民視為是安全的。
- 連接和動感化公園的空間和人流通道。
- 優化進入公園和公園之間的景觀。



平衡生動和寧靜的空間

- 在公共設施（包括市民中心）和公園之間建立強大的戶內與戶外關係。
- 加添公園中的生氣以迎合周邊建築物生動的用途。
- 安排安靜用途的公園靠近辦公室和住宅區。



茂盛青蔥和各式各樣的景觀

- 創設一個生物多樣性、親近大自然的茂盛青蔥城市森林。
- 確保華蓋大樹能在公園的各個層面上茁壯成長。
- 利用，使用和珍惜雨水。



一個公園，不同部份

- 將一系列獨特的空間互相連結，成為一個連貫的整體，超越個別空間能發揮的使用效果。
- 使用場地設計，景觀和活動的安排來統一規劃公園。



提供日光及蔭涼處

- 安排活動受最小建築物陰影影響。
- 設計對不同的日光和陰影形態作出反應的景觀。
- 提供足夠避雨和陽光的遮蔽處。



創新

- 計劃一個重點公園，重新釐定在建築物屋頂建設公園景觀的可能性。
- 以新穎和吸引人參與的方式提供市民所需的公園服務。
- 在屋頂上創造意想不到的大自然環境。

設計揭示

渥烈治中心的新公園將提供一系列溫馨及多種類的公園空間，平衡寧靜和活躍的用途，並與意想不到太平洋-西北景觀設計的屋頂緊密相連。這將確保鄰近的市民中心和購物中心之間充滿活力的互動，以創造一個熱鬧繁華的城市目的地，同時也服務於附近居民的日常公園和娛樂需求。

7 ANALYSIS

The diagrams illustrated here provide an analysis of:

- Context adjacent to the park
- Park levels
- Access: stairs, elevators, escalators

本展板和下展板所展示的圖表分析如下：

- 層級
- 背景
- 連接

Park Levels

Oakridge Park will be located partly at street level and partly on the mall's roof. This diagram shows the interrelationships between the levels.

公園的層次

渥烈治公園將部分位於街道層面和部分位於商場的屋頂。這個圖表顯示了不同層面之間的相互關係。

Context Adjacent to the Park

Oakridge Park will be surrounded by a variety of buildings and amenities including:

- The Civic Centre/ Community Centre
- Offices
- Townhouses and residential towers
- Shops
- Restaurants with outdoor dining

渥烈治公園將被各種各樣的建築物和設施所圍繞，包括：

- 市民中心/社區中心
- 辦事處
- 排屋和住宅大樓
- 商店
- 室外用餐的餐廳

Access: Stairs, Elevators & Escalators

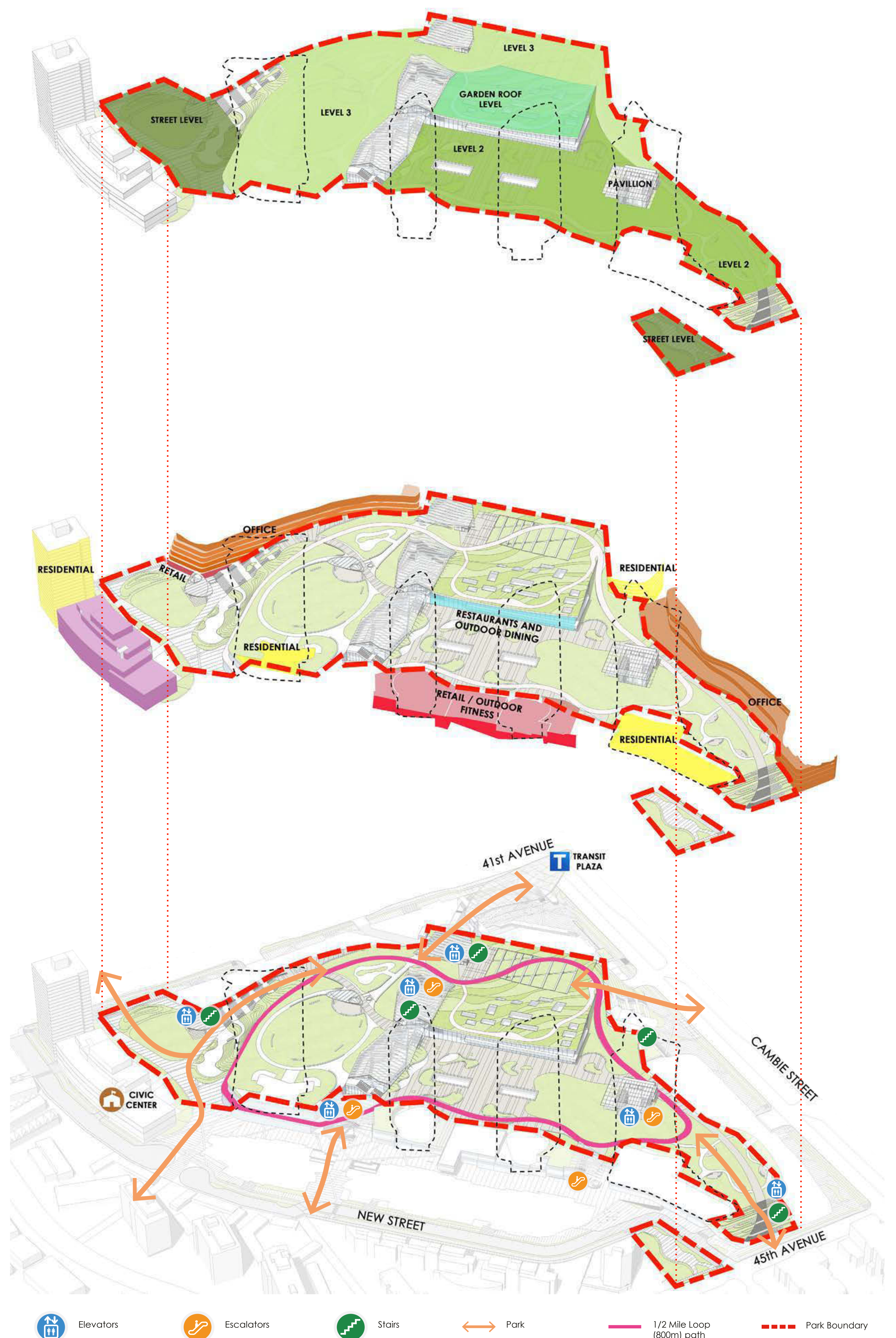
There will be many ways to move between park levels by stairs, elevators and escalators.

There are six places to access the park from streets and the transit plaza. Access from the street level to the upper park levels will be provided by stairs, escalators and elevators.

Access between levels 2 and 3 will be by stairs and ramps.

人行流轉入口：樓梯，電梯&自動扶梯

通過樓梯，電梯和自動扶梯可以在公園層面之間移動。有六個地方可以從街道和中轉廣場進入公園。通過樓梯，自動扶梯和電梯提供從街道到公園上層的通道。2級和3級之間的通道將通過樓梯和坡道進入。





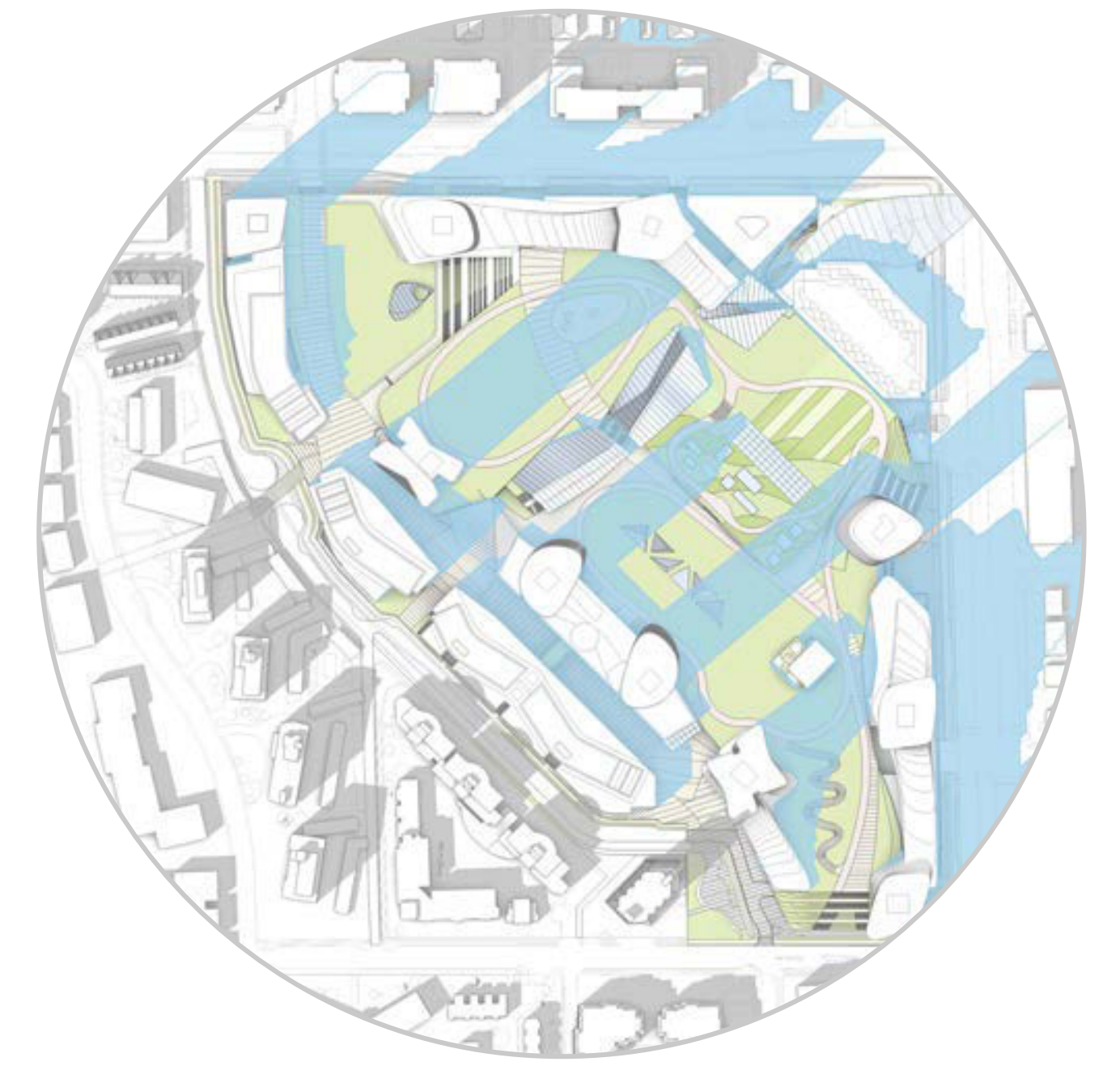
March 21 and September 21, 10:00am



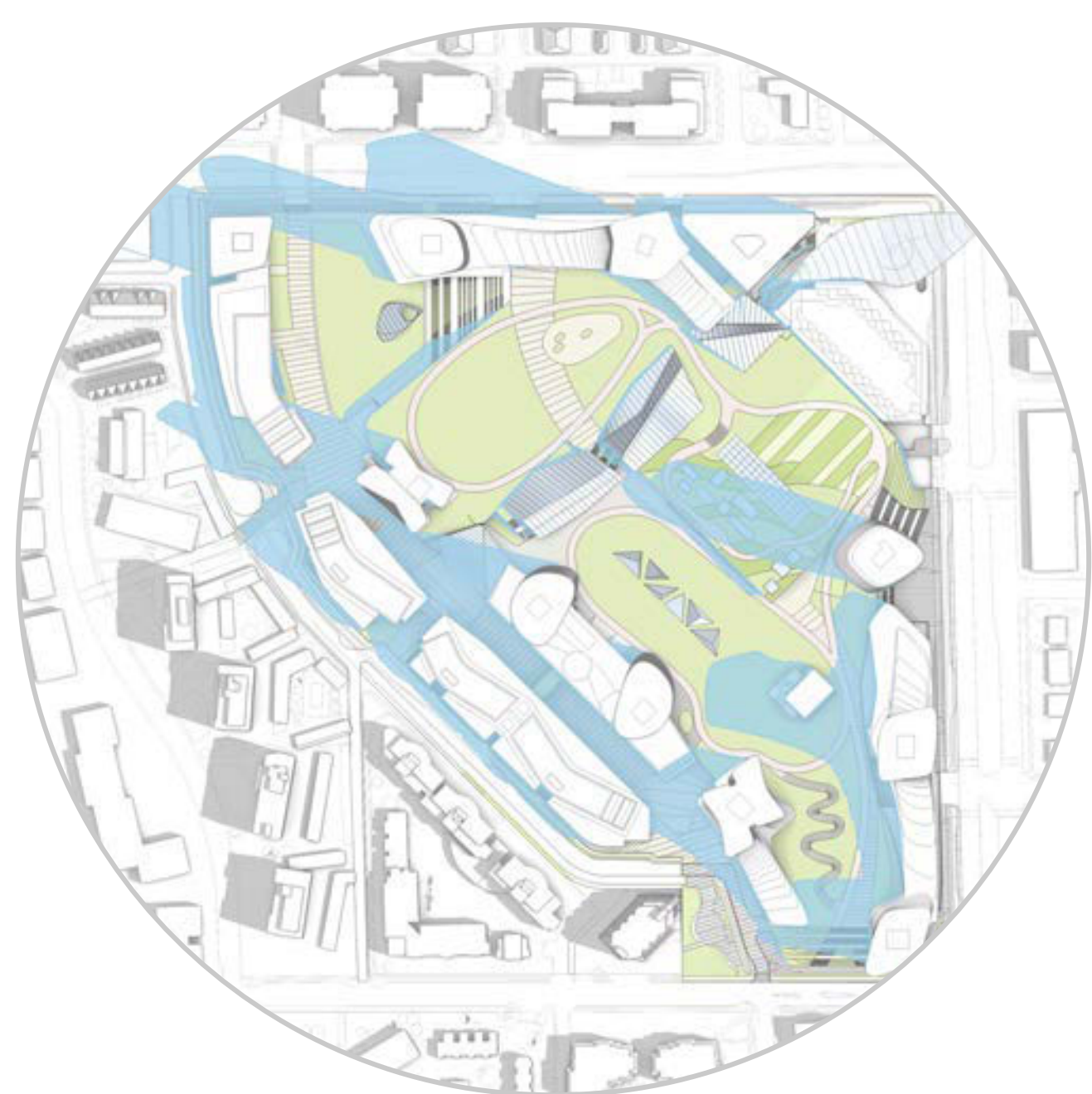
March 21 and September 21, 12:00pm



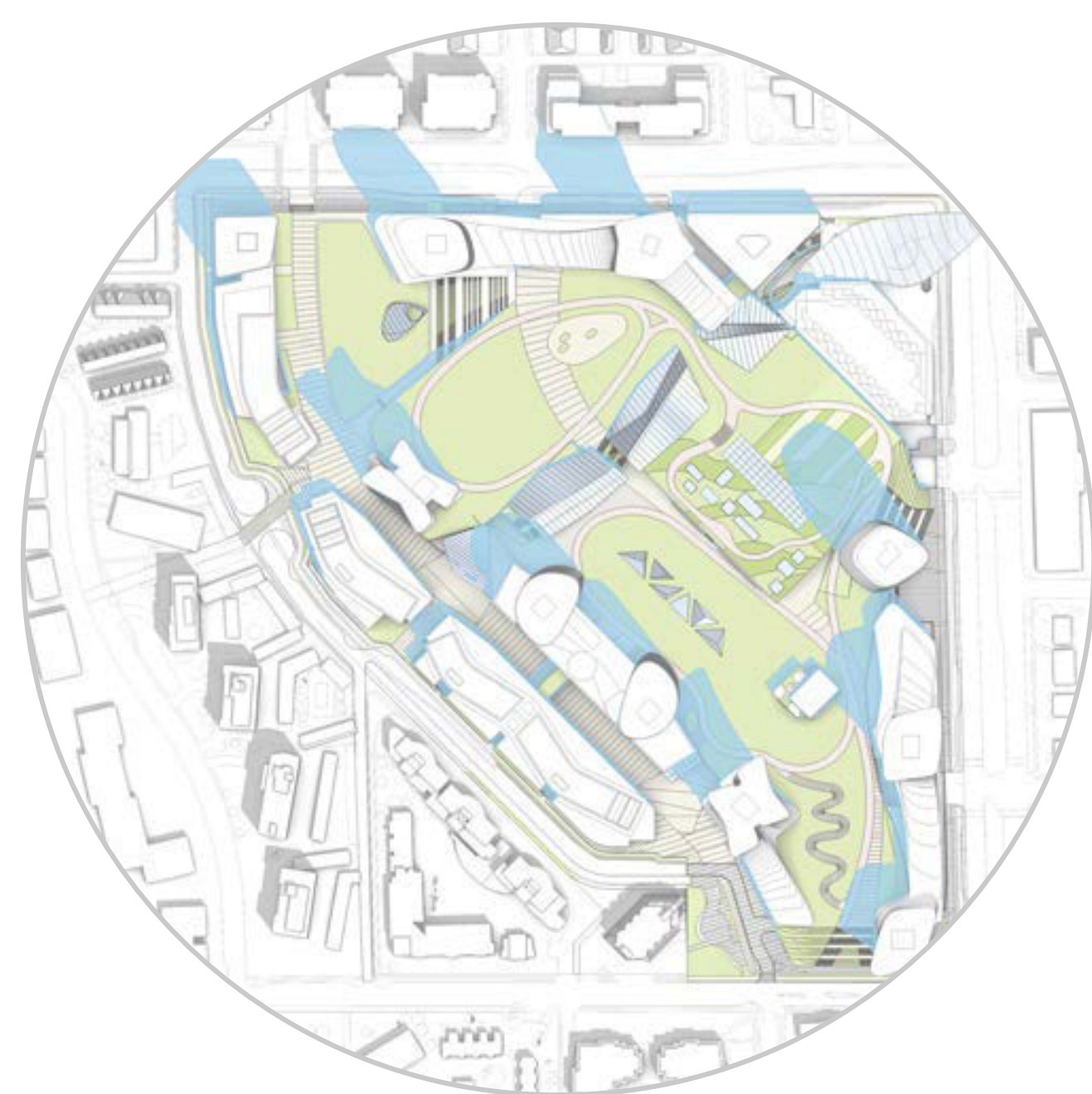
March 21 and September 21, 2:00pm



March 21 and September 21, 4:00pm



June 21, 10:00am



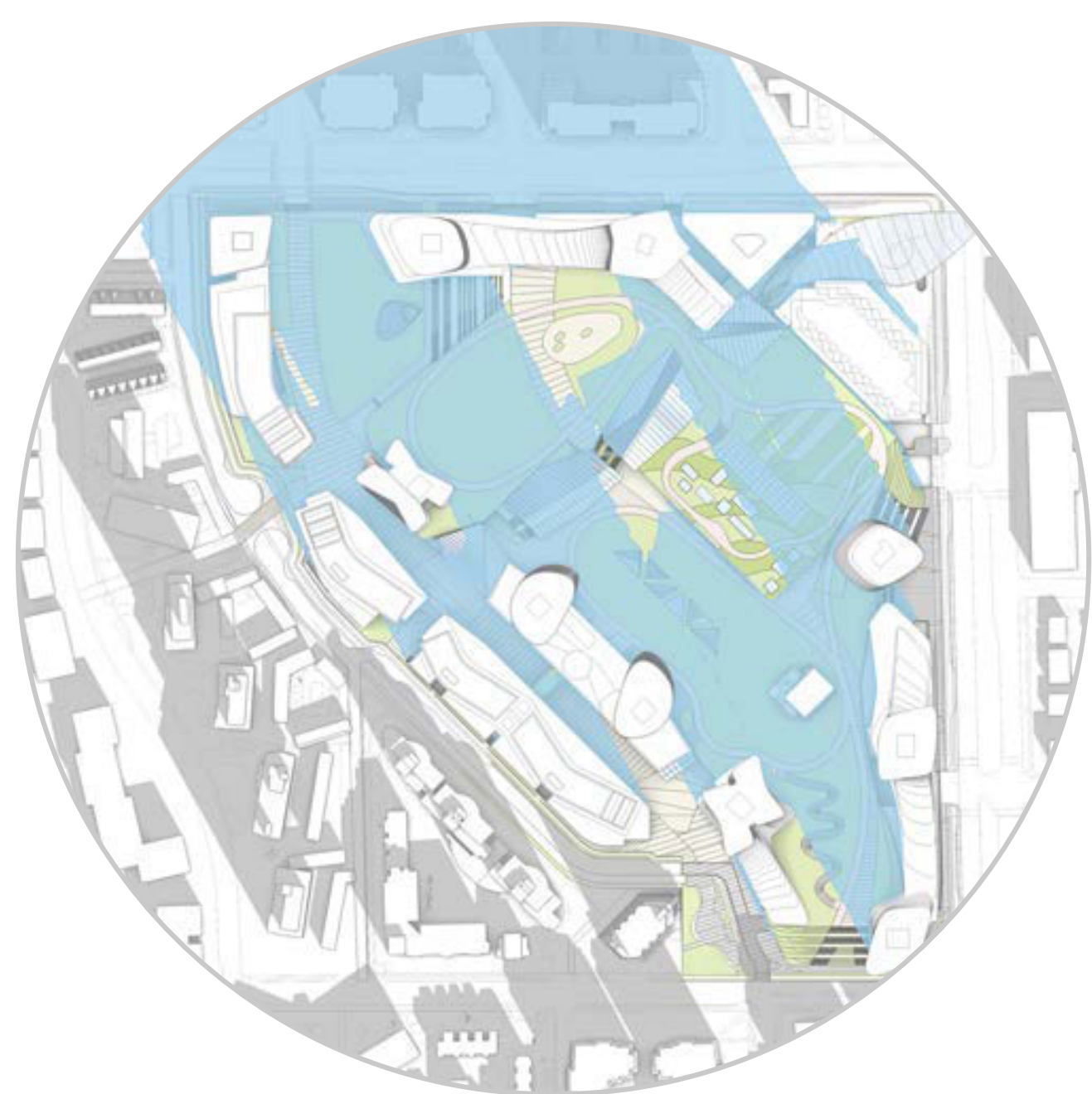
June 21, 12:00pm



June 21, 2:00pm



June 21, 4:00pm



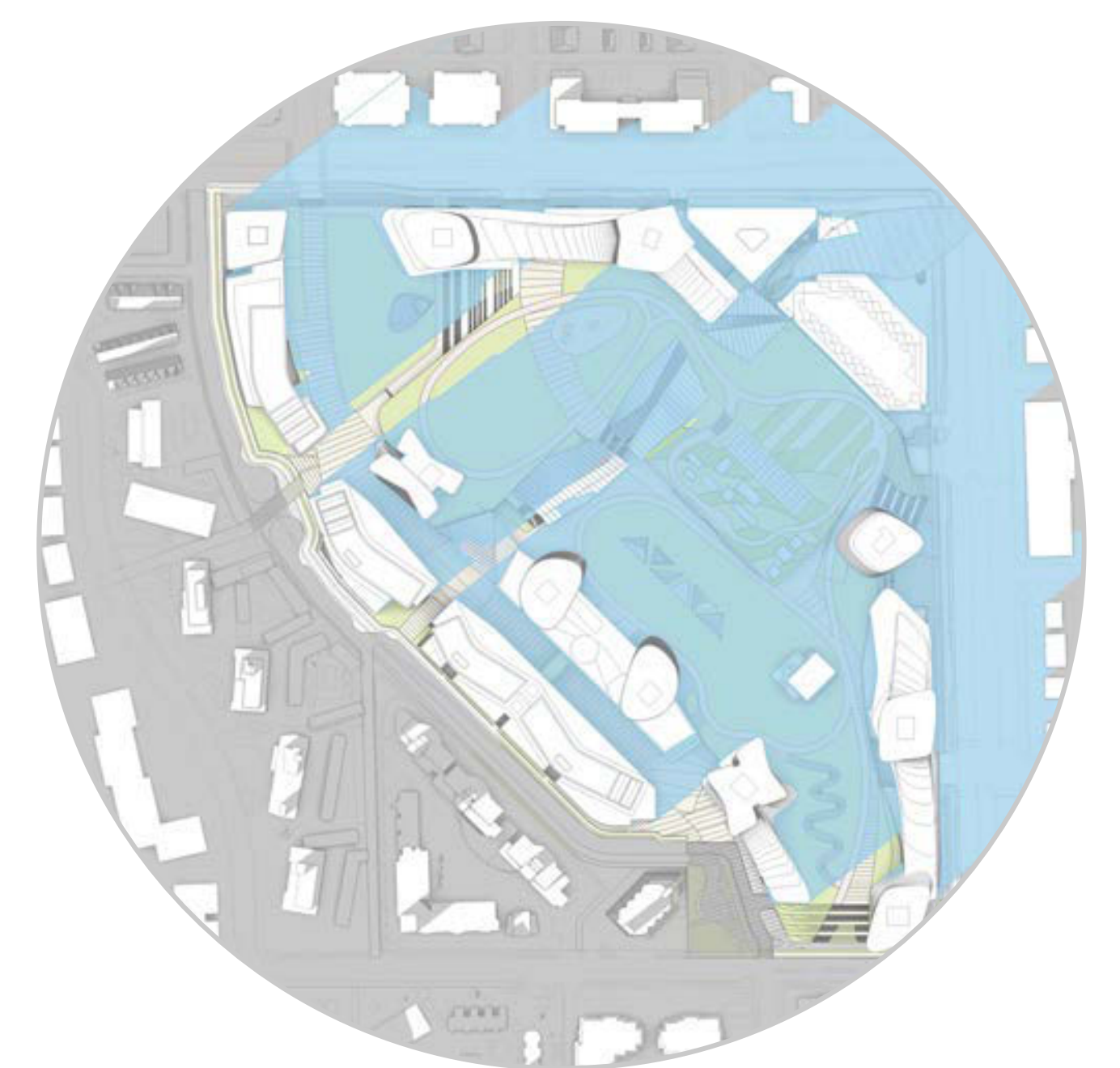
December 21, 10:00am



December 21, 12:00pm



December 21, 2:00pm



December 21, 4:00pm

Solar Access Analysis

These diagrams illustrate building shadow impacts on the park at the two equinoxes, the summer solstice and the winter solstice and at different times of day. This helps inform the design of the park based on the amount of sunlight certain activities and programs require.

這些圖表顯示了在兩個分點，夏至和冬至以及一天中的不同時間對公園造成的陰影影響。這有助於根據某些活動和計劃所需的陽光量為公園的設計提供資訊。

9

CENTRAL THEMES



Lush Plantings and Large Trees
茂盛青蔥的花園和大樹



Variety of Seating
各種坐位



Interactive Play
互動遊戲



Integrated Water
綜合水景



Habitat for Birds and Pollinators
鳥類和傳授花粉昆蟲的棲息地



Variety of Seating
各種坐位



Interactive Play
互動遊戲



Celebrate Water
讚賞水的資源



800m Running/Walking Track
跑道/步行道



Variety of Seating
各種坐位



Public Art
公共藝術



Water
噴池公園/水景

The new park features six distinct areas, explored on Boards 10 - 17 include a range of park activities, elements and components.

The central themes shown above illustrate the various components that will be key to the park vision. They help to tie the park together, and are expressed throughout the design.

新公園有六個不同的區域，在10至17號公路上探索包括一系列公園活動，元素和組件。

上面顯示的中心主題描述了將成為公園願景的關鍵的各個組成部分。它們將聯合這公園的種種空間在整體設計中。



The draft park concept provides an overview of the overall design.

這是公園總體概念的關鍵方案。



CIVIC CENTRE PARK
市民中心公園



UPPER GREEN
綠化上層



THE MEADOW GARDENS
梯級空間



THE COMMONS
公共場所



THE WOODLAND
林地



POCKET PARK
袖珍公園



This is a key plan for the concept areas within the draft park concept. Details of the concept areas and other ideas are illustrated on the following panels: Civic Centre Park, Upper Green, the Commons, the Meadow Gardens, the Woodland and Pocket Park.

這是公園總體概念的關鍵方案。公園概念領域的細節將在以下展板陳述：市民中心公園，綠化上層，公共場所，草地花園，林地，袖珍公園

12a CIVIC CENTRE PARK

市民中心公園

市民中心公園位於街道上，是進入更大公園的入口。公園可從41街和市民中心輕鬆抵達，讓社區中心的活動可以向外擴散並使公園生動活潑。它包括一個大型遊樂場，靈活用途的草坪和有蓋的涼亭，供日常和小型活動使用。新的公園委員會社區中心將與新圖書館和兒童保育設施一起位於新市民中心內。



Artist Rendering of the Civic Centre Park

The Civic Centre Park is at street level, and provides an introduction to the larger park area on the roof. It is easily accessed from 41st avenue and the civic centre, allowing community centre activities to spill outside and animate the park.

It includes:

- Major children's nature play for a range of ages
- Great steps as amphitheater seating, with play spaces and big slides
- Large informal and flexible lawn area for gathering, play and events
- An outdoor pavilion for informal and event use
- Outdoor activity spaces for community centre activities

New Community Centre at the Civic Centre:

- A new Park Board community centre will be co-located in the new Civic Centre along with a library and childcare facility
- The community centre will include a fitness centre, gymnasium, seniors centre with kitchen, youth centre, performance space and multi-use spaces
- It will be designed to take advantage of the adjacency to the park with outdoor spaces directly off the centre
- More information on the centre is available at: <http://development.vancouver.ca/650w41st/index.htm>

12b CIVIC CENTRE PARK

市民中心公園

市民中心公園位於街道上，是進入更大公園的入口。公園可從41街和市民中心輕鬆抵達，讓社區中心的活動可以向外擴散並使公園生動活潑。它包括一個大型遊樂場，靈活用途的草坪和有蓋的涼亭，供日常和小型活動使用。新的公園委員會社區中心將與新圖書館和兒童保育設施一起位於新市民中心內。



Plan View Enlargement of the Civic Centre Park 概念1

Artist Rendering of the Civic Centre Park

The Civic Centre Park is at street level, and provides an introduction to the larger park area on the roof. It is easily accessed from 41st avenue and the civic centre, allowing community centre activities to spill outside and animate the park.

It includes:

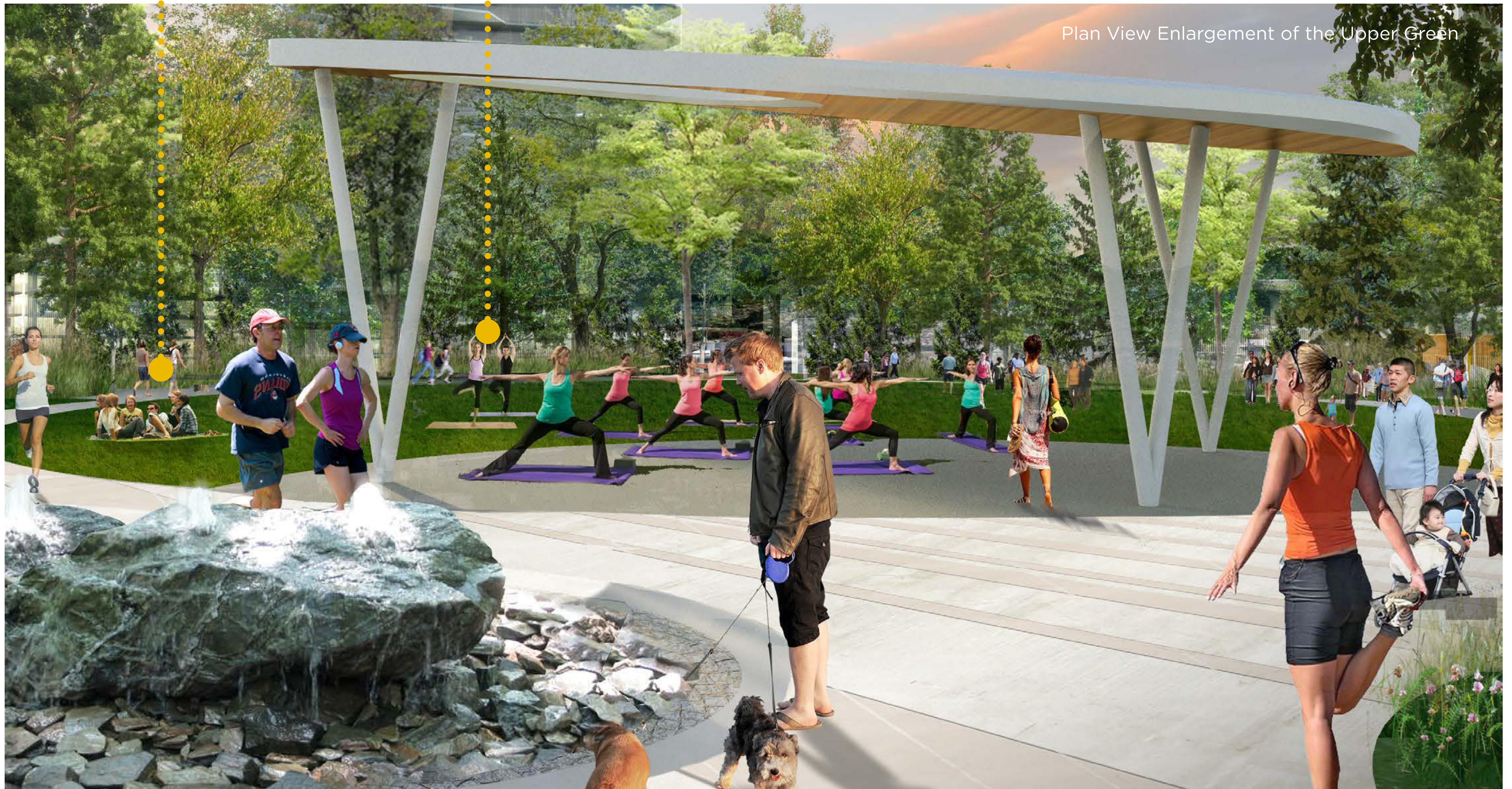
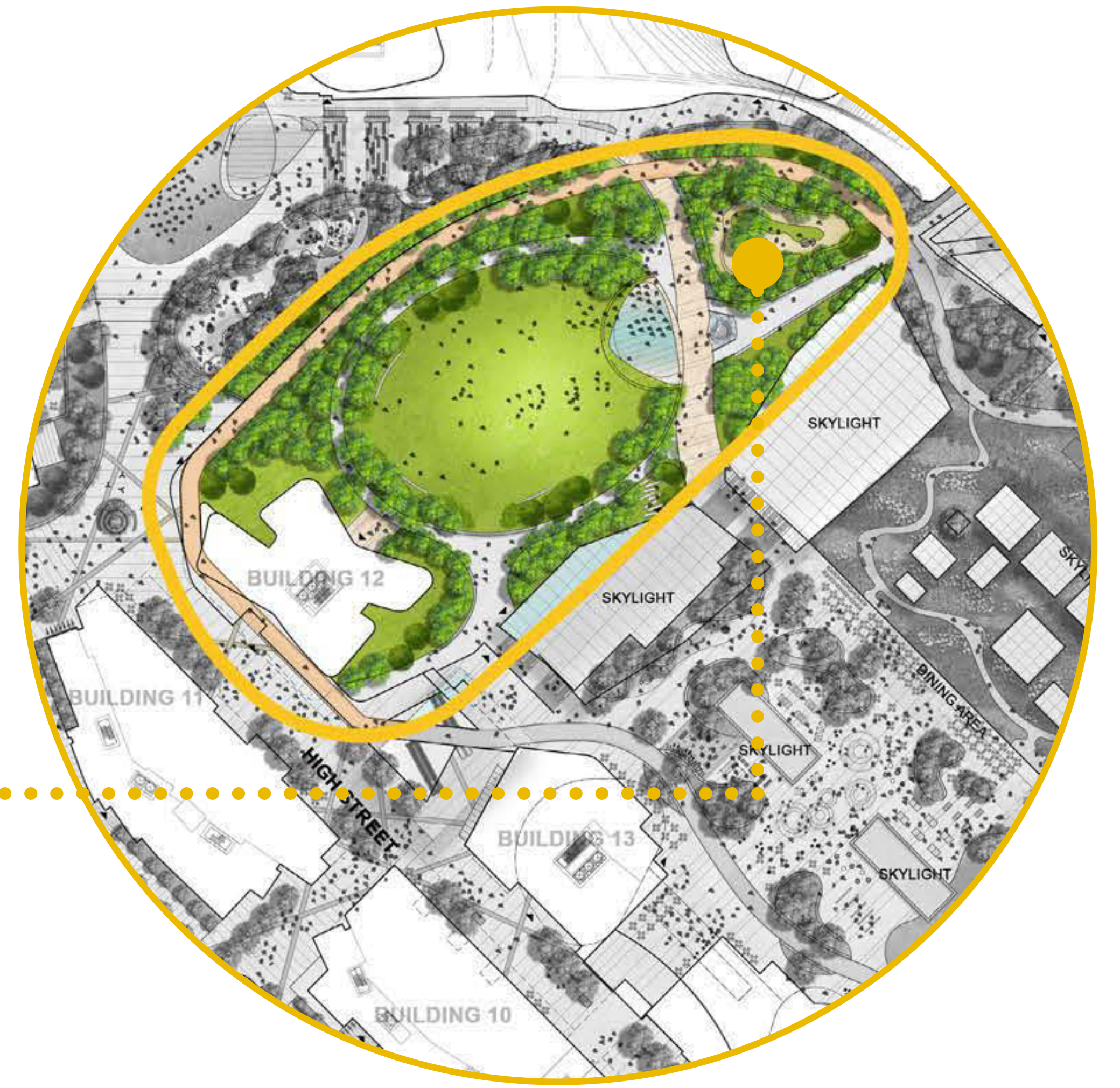
- Major children's nature play for a range of ages
- Great steps as amphitheater seating, with play spaces and big slides
- Large informal and flexible lawn area for gathering, play and events
- An outdoor pavilion for informal and event use
- Outdoor activity spaces for community centre

New Community Centre at the Civic Centre:

- A new Park Board community centre will be co-located in the new Civic Centre along with a library and childcare facility
- The community centre will include a fitness centre, gymnasium, seniors centre with kitchen, youth centre, performance space and multi-use spaces
- It will be designed to take advantage of the adjacency to the park with outdoor spaces directly off the centre
- More information on the centre is available at: <http://development.vancouver.ca/650w41st/index.htm>

綠化上層

綠化上層是位於建築物上蓋的一個大型公共草坪，擁有茂盛青蔥的樹木背景，位於公園的上層。有圍欄的自由走動遛狗區位於附近。



Artist Rendering of the Upper Green

The Upper Green is designed to be a large open lawn space with a lush treed backdrop, located on the upper level of the park. A fenced off-leash dog area is located nearby.

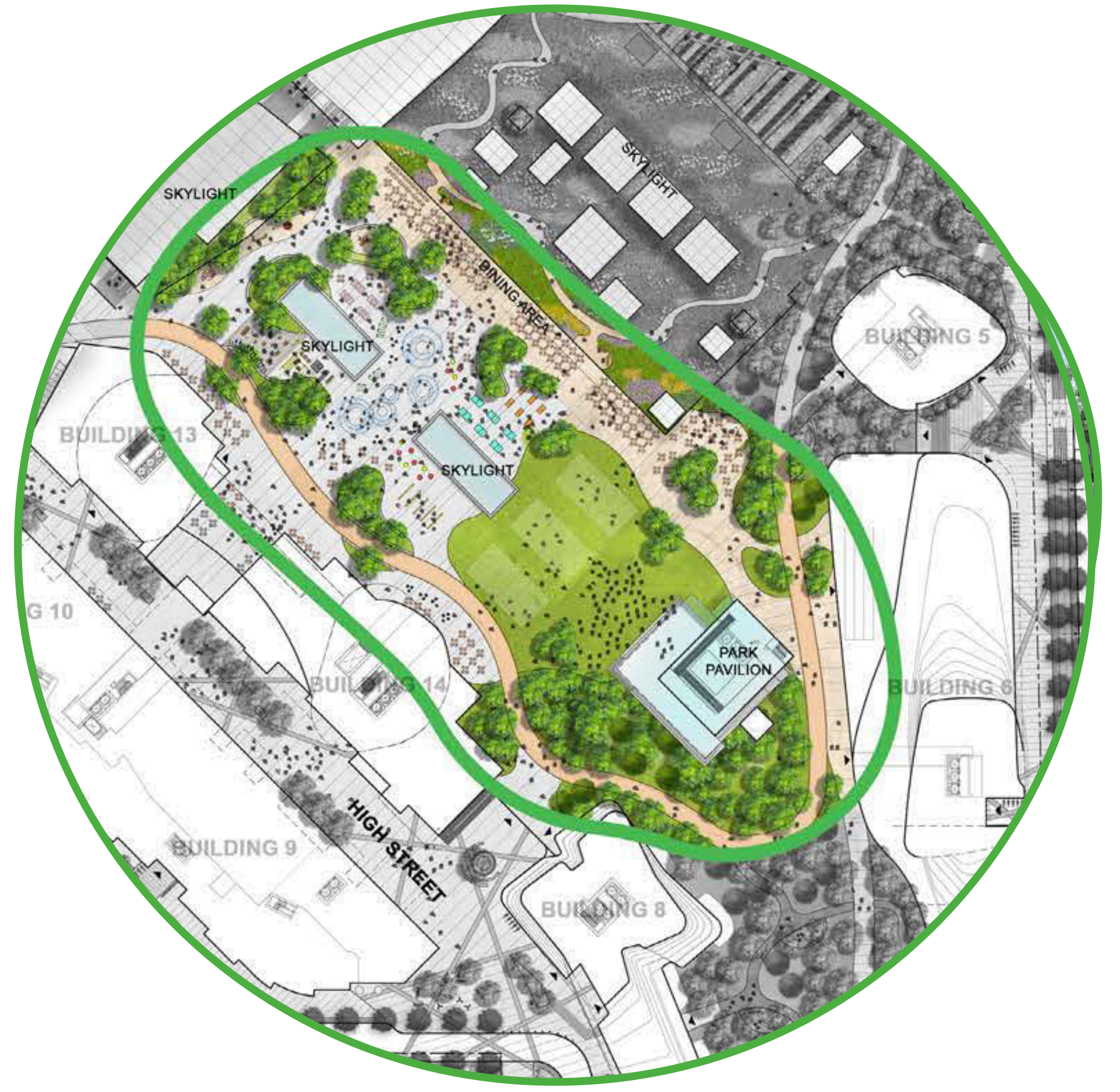
It includes:

- Large green for a variety of informal activities
- Bordered by the running loop
- Generous space for group activities like tai chi, yoga and fitness bootcamps and occasional events
- Covered pavilion for concerts, performances and group activities
- A fenced off-leash dog area.

14a THE COMMONS

公共場所

公共場所的設計是將鄰近餐廳，零售商店和戶外用餐庭院湊合成一個活動中心。它的設計將促進在白天和晚上及所有季節的使用，並且包括一個大型開放式草坪區，日常和平時活動使用的遮蓋式涼亭，樹蔭以及樹蔭和就座的景觀區。廣場區域為活動或展覽提供了多用途的靈活空間，還有一個互動的人工水景，鍛煉身體區，遊玩區和遊戲區。



Artist Rendering of the Commons

The Commons is designed to provide a hub of activity next to restaurants and outdoor dining patios. It is designed to encourage use throughout the day and evening, during all seasons and is designed with a variety of seating options for performances of different sizes, trees and landscaped areas for shade and seating.

It includes:

- A pavilion for events and performances, as well as daily use, such as a covered for tai chi and other activities
- Open lawn for a variety of informal uses including yoga, sunbathing, picnicking and Frisbee and temporary volleyball or badminton nets
- Playground space for a range of ages
- Interactive fitness stations
- Outdoor games i.e. table tennis
- Wide variety of seating in sun and shade

14b THE COMMONS

公共場所

公共場所的設計是將鄰近餐廳，零售商店和戶外用餐庭院湊合成一個活動中心。它的設計將促進在白天和晚上及所有季節的使用，並且包括一個大型開放式草坪區，日常和平時活動使用的遮蓋式涼亭，樹蔭以及樹蔭和就座的景觀區。廣場區域為活動或展覽提供了多用途的靈活空間，還有一個互動的人工水景，鍛煉身體區，遊玩區和遊戲區。



Plan View Enlargement of the Commons Illustrating Idea 1
概念 1

Artist Rendering of the Commons

The Commons is designed to provide a hub of activity next to restaurants and outdoor dining patios. It is designed to encourage use throughout the day and evening, during all seasons and is designed with a variety of seating options for performances of different sizes, trees and landscaped areas for shade and seating.

It includes:

- A pavilion for events and performances, as well as daily use, such as a covered for tai chi and other activities
- Open lawn for a variety of informal uses including yoga, sunbathing, picnicking and Frisbee and temporary volleyball or badminton nets
- Playground space for a range of ages
- Interactive fitness stations
- Outdoor games i.e. table tennis
- Wide variety of seating in sun and shade

14c THE COMMONS

公共場所

公共場所的設計是將鄰近餐廳，零售商店和戶外用餐庭院湊合成一個活動中心。它的設計將促進在白天和晚上及所有季節的使用，並且包括一個大型開放式草坪區，日常和平時活動使用的遮蓋式涼亭，樹蔭以及樹蔭和就座的景觀區。廣場區域為活動或展覽提供了多用途的靈活空間，還有一個互動的人工水景，鍛煉身體區，遊玩區和遊戲區。



Plan View Enlargement of the Commons Illustrating Idea 1
概念 1

Artist Rendering of the Commons

The Commons is designed to provide a hub of activity next to restaurants and outdoor dining patios. It is designed to encourage use throughout the day and evening, during all seasons and is designed with a variety of seating options for performances of different sizes, trees and landscaped areas for shade and seating.

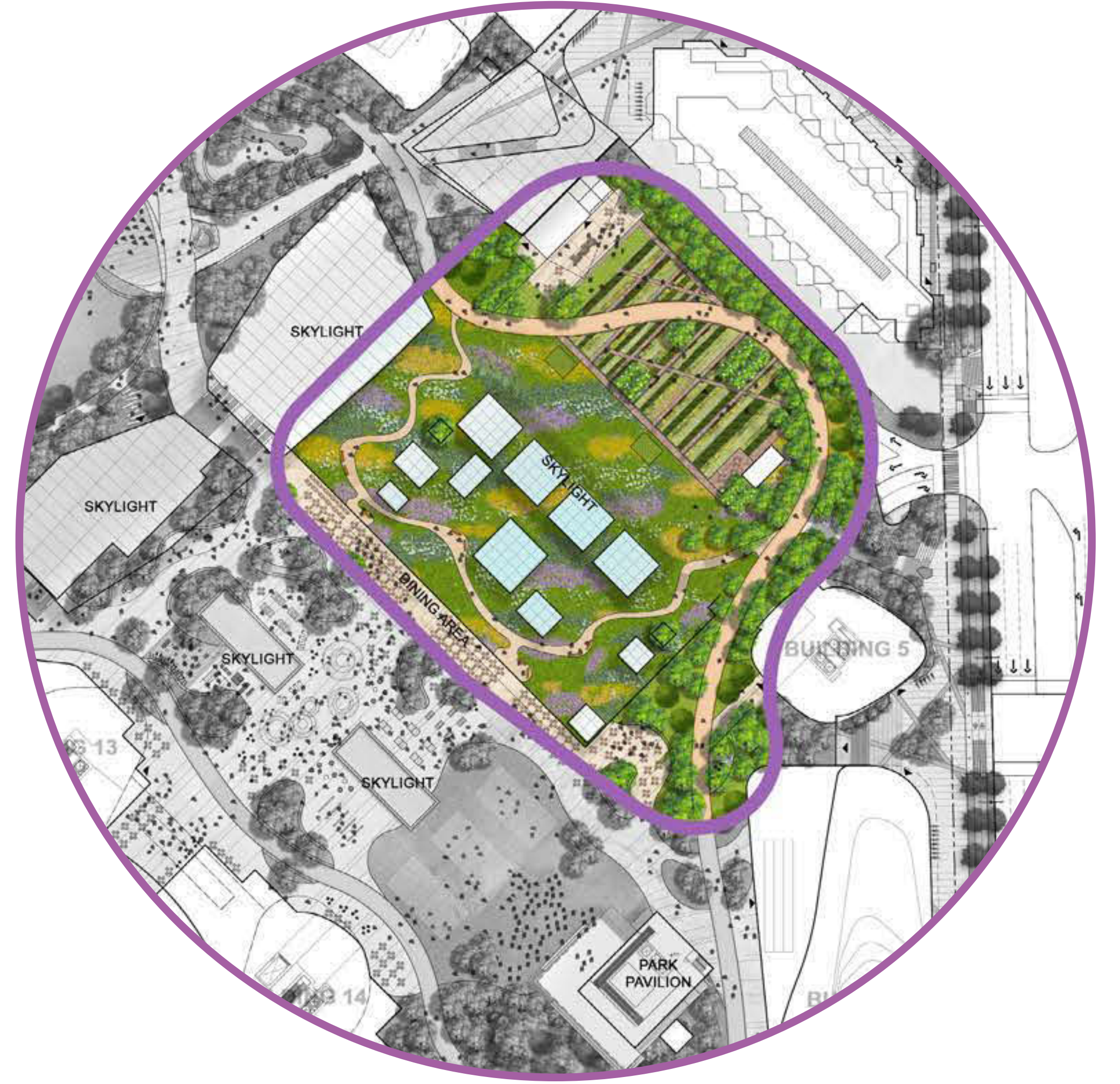
It includes:

- A pavilion for events and performances, as well as daily use, such as a covered for tai chi and other activities
- Open lawn for a variety of informal uses including yoga, sunbathing, picnicking and Frisbee and temporary volleyball or badminton nets
- Playground space for a range of ages
- Interactive fitness stations
- Outdoor games i.e. table tennis
- Wide variety of seating in sun and shade

15^a THE MEADOW GARDENS

草地花園

草地花園是一種茂盛的野花和草地景觀設計，適合漫步，觀鳥，並將成為支援鳥類和其他傳授花粉昆蟲的棲息地。鄰近的社區學習花園和空間將提供機會支持共同合作種植，分享和學習各種水果和蔬菜，養蜂業和其他園藝活動。



The Meadow Gardens is a lush wildflower and grass landscape design for strolling and bird watching and will provide food and homes for birds and other pollinators. An adjacent community learning garden and support space would provide opportunities to work together to grow, share and learn about a wide variety of fruits and vegetables, beekeeping and other gardening pursuits.

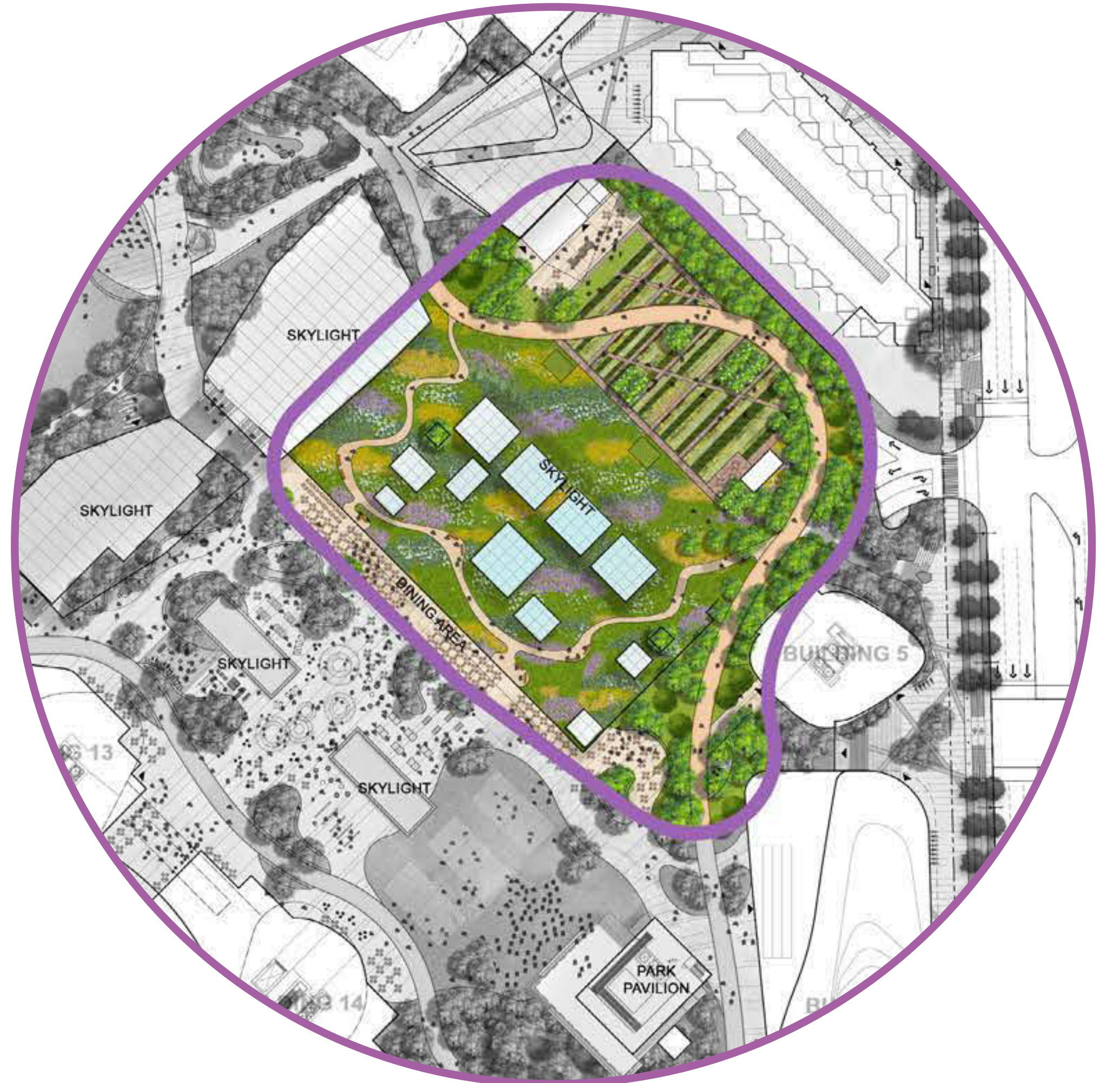
It includes:

- Terraced community learning garden and orchard
- An outdoor classroom and gathering area with support facilities for gardening
- A pavilion for indoor learning opportunities and event space
- A meandering path through a large perennial meadow that will encourage birds and insects
- A lush tree edge
- Places for quiet contemplation

15^b THE MEADOW GARDENS

草地花園

草地花園是一種茂盛的野花和草地景觀設計，適合漫步，觀鳥，並將成為支援鳥類和其他傳授花粉昆蟲的棲息地。鄰近的社區學習花園和空間將提供機會支持共同合作種植，分享和學習各種水果和蔬菜，養蜂業和其他園藝活動。



Plan View Enlargement of the Meadow Garden

Artist Rendering of the Meadow Gardens

The Meadow Gardens is a lush wildflower and grass landscape design for strolling and bird watching and will provide food and homes for birds and other pollinators. An adjacent community learning garden and support space would provide opportunities to work together to grow, share and learn about a wide variety of fruits and vegetables, beekeeping and other gardening pursuits.

It includes:

- Terraced community learning garden and orchard
- An outdoor classroom and gathering area with support facilities for gardening
- A pavilion for indoor learning opportunities and event space
- A meandering path through a large perennial meadow that will encourage birds and insects
- A lush tree edge
- Places for quiet contemplation

16a THE WOODLAND

林地

林地將被設想為一個茂盛青蔥的城市森林，擁有木板路和有吸引力的座位區。多樣性的林下植物能展示出太平洋西北地區本土植物群，締造綠色恢復體驗；與公園中一些更活躍的空間形成鮮明對比。



Artist Rendering of the Woodland

The Woodland is envisioned as a lush urban forest with boardwalks and attractive seating areas. A diversity of understory plants, showcasing a diversity of pacific-northwest native flora, will create a green, restorative experience in contrast to some of the more active spaces in the park.

It includes:

- Meandering boardwalk through a forest setting
- Seating areas for small groups and individuals.
- Quiet areas for reflection

16b THE WOODLAND

林地

林地將被設想為一個茂盛青蔥的城市森林，擁有木板路和有吸引力的座位區。多樣性的林下植物能展示出太平洋西北地區本土植物群，締造綠色恢復體驗；與公園中一些更活躍的空間形成鮮明對比。



Artist Rendering of the Woodland

The Woodland is envisioned as a lush urban forest with boardwalks and attractive seating areas. A diversity of understory plants, showcasing a diversity of pacific-northwest native flora, will create a green, restorative experience in contrast to some of the more active spaces in the park.

It includes:

- Meandering boardwalk through a forest setting
- Seating areas for small groups and individuals.
- Quiet areas for reflection

袖珍公園

袖珍公園的設計將提供街道入口的社區公園，並引導人們進入更大的屋頂公園。這個公園將把人們聚集在一起，促進各類積極活動和社交機會。



Artist Rendering of the Pocket Park

The Pocket Park is designed to provide a neighbourhood park at street level as well as lead people to the entrance to the larger rooftop park. The park will bring people together for a mix of active play and opportunities for social activities.

It includes:

- Preschool aged playground
- Variety of seating overlooking the playground
- A grove of trees that lead the way up to the park on the rooftop