



# Pandora Park

## Summary of Findings

Prepared For: Vancouver Board of Parks & Recreation

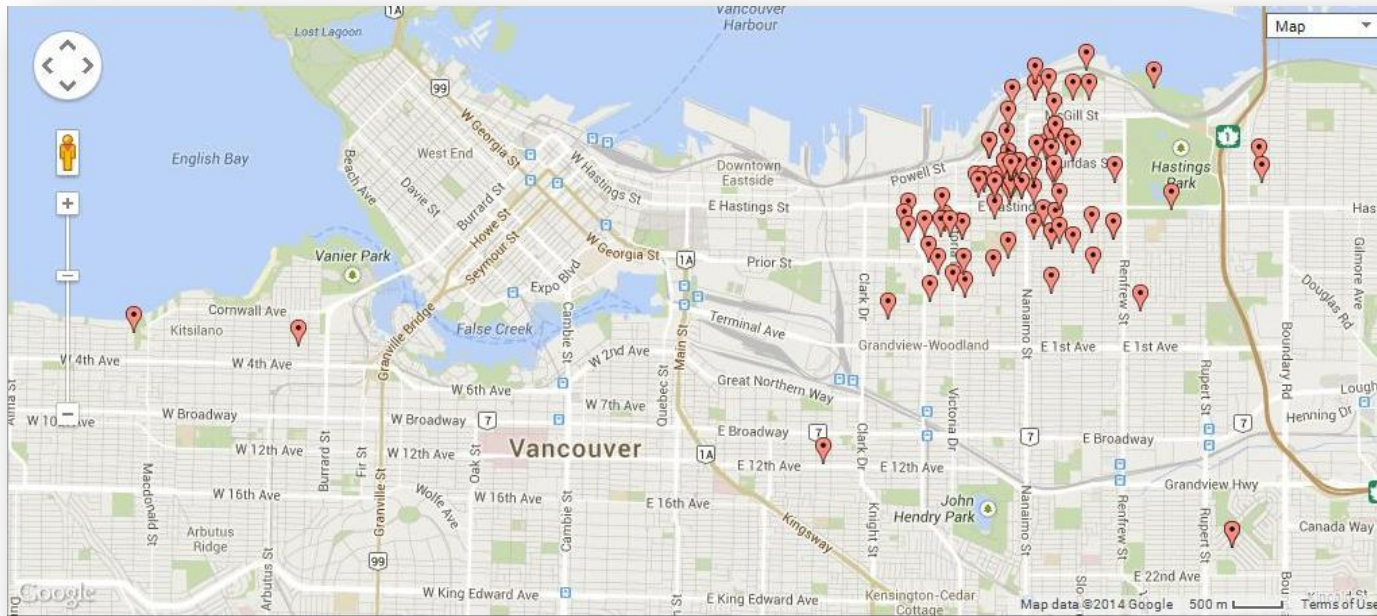


# Key Findings

- An online questionnaire was run from May 30 – June 13, 2014.
- 108 completed questionnaires were collected. The questionnaire was accessed in the following ways:
  - Talk Vancouver members were targeted by postal code to include only those who live within the surrounding neighbourhood of Pandora Park (panel members whose home postal codes begin with either V5K or V5L).
  - A link to the questionnaire was also available on the Pandora Park project page on the City of Vancouver website.
  - A paper survey was made available at a public consultation event held on May 29, 2014.

## Who did we talk to?

- As this questionnaire was targeted to Talk Vancouver panel members from the surrounding neighbourhood, the vast majority of respondents reside in the area surrounding Pandora Park. There are a small number of respondents who live outside of the immediate area surrounding Pandora Park (please see map below for respondent distribution):





# Key Findings

- By age group, the strongest representation of questionnaire respondents is among 30-39 year olds (40% of all respondents), followed by 40-49 year olds.
  - While there is representation among those under the age of 30, this demographic group accounts for only 10% of all respondents. Similarly, older age groups, specifically those aged 50 or older represent 17% of all respondents.
- Respondents are slightly more likely to have children in their household (54%) than not (44%) (3% did not provide an answer).

## What We Heard:

- ✓ **71%** of residents support **Option “B”**
- ✓ **52%** support **Option “A”**
- 68%** of residents **prefer Option “B”**

- Among the proposed changes in options “A” and “B,” support is strongest for adding a path to connect the East and West side of the park:
  - ✓ **80%** of residents **support adding a path to connect the East and West sides of the park**
  - ✓ **68%** of residents **support changing the tennis court to a basketball court**
- For the new children’s spray park, residents were shown a series of possible water park features and asked which they would like to see included in the new spray park. The **most popular** features are:



**79%**



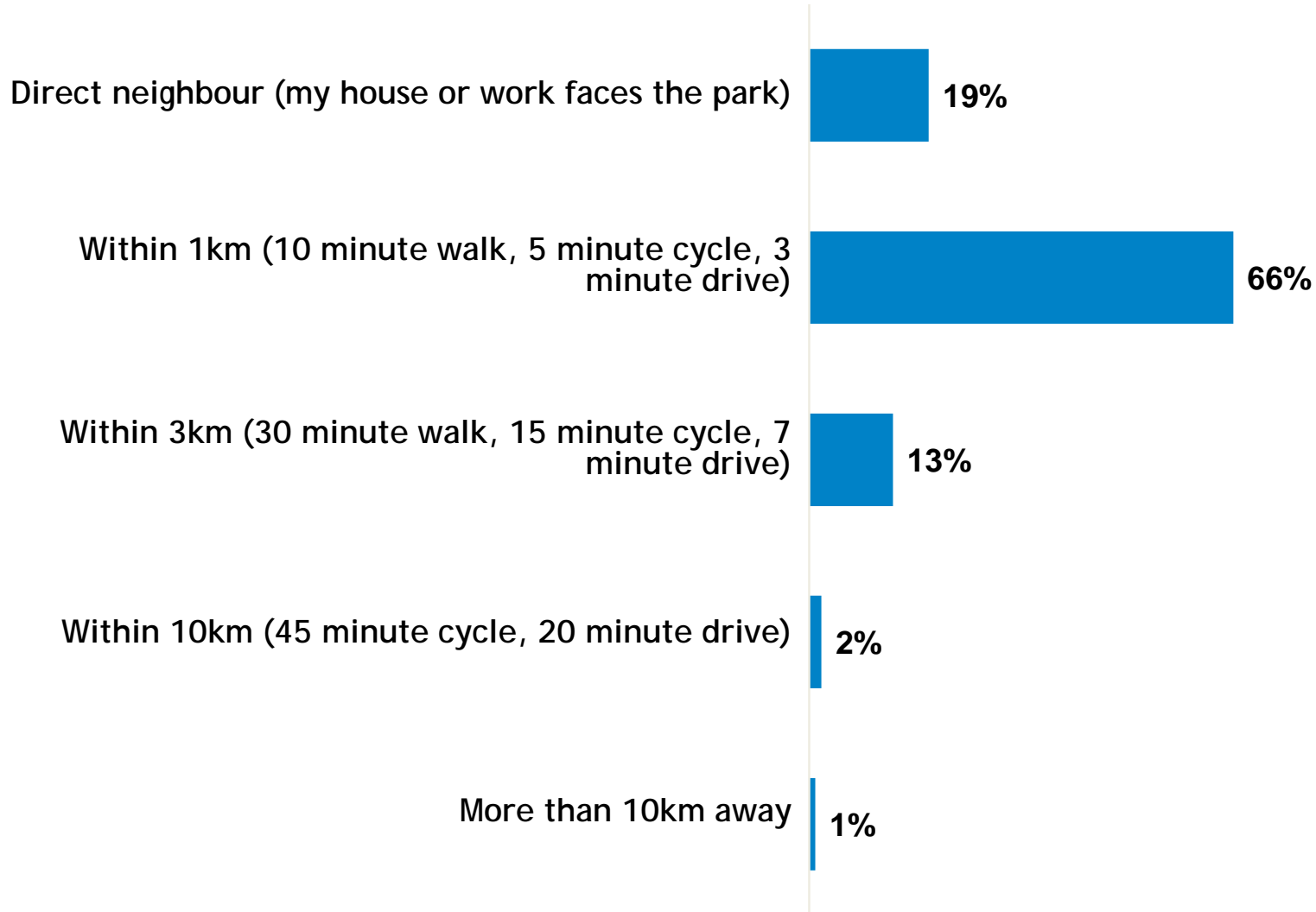
**73%**



**70%**



# Proximity to Pandora Park



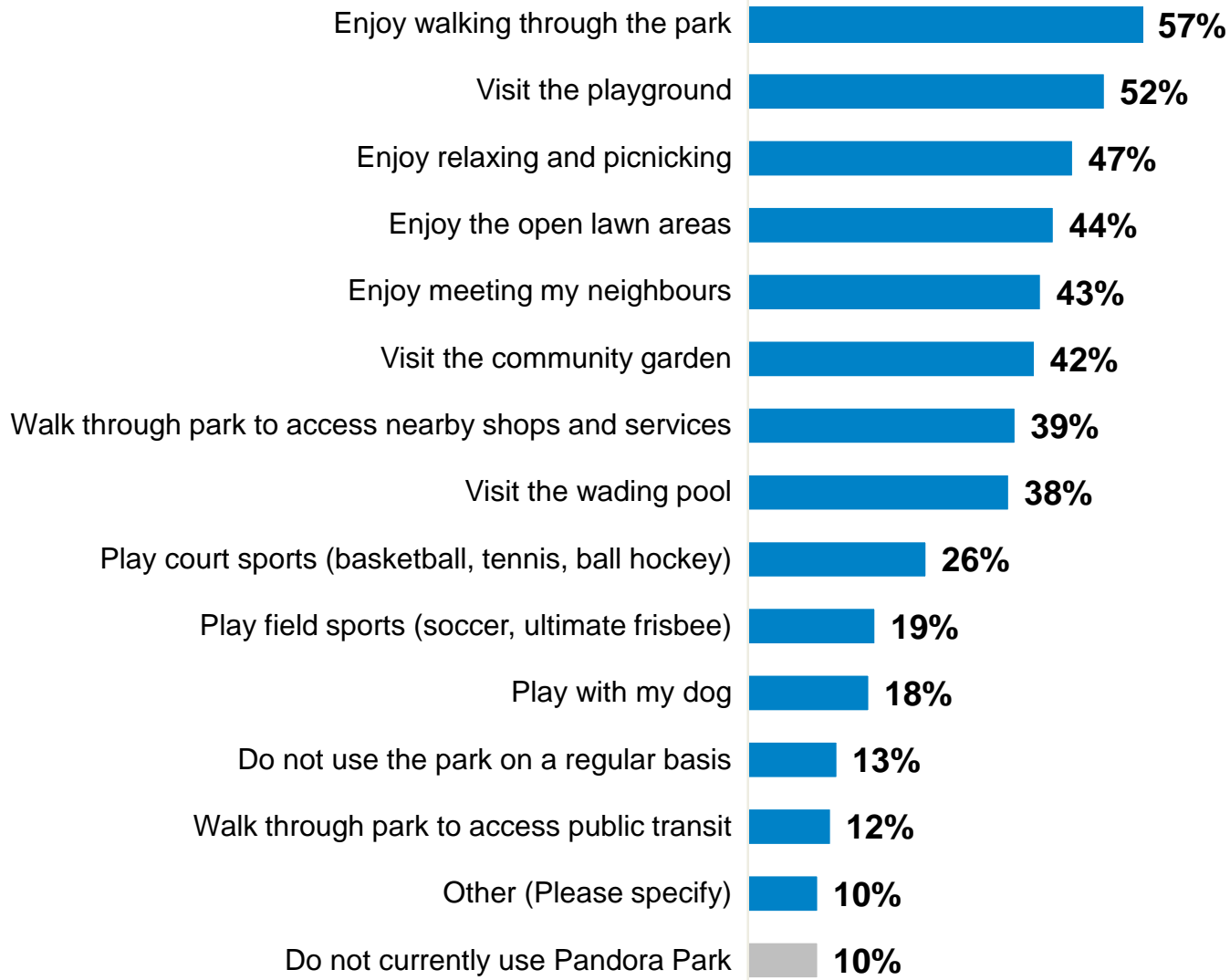
Base: All respondents (n=108)

*Approximately how close to Pandora Park do you live or work?*





# Current Usage of Pandora Park

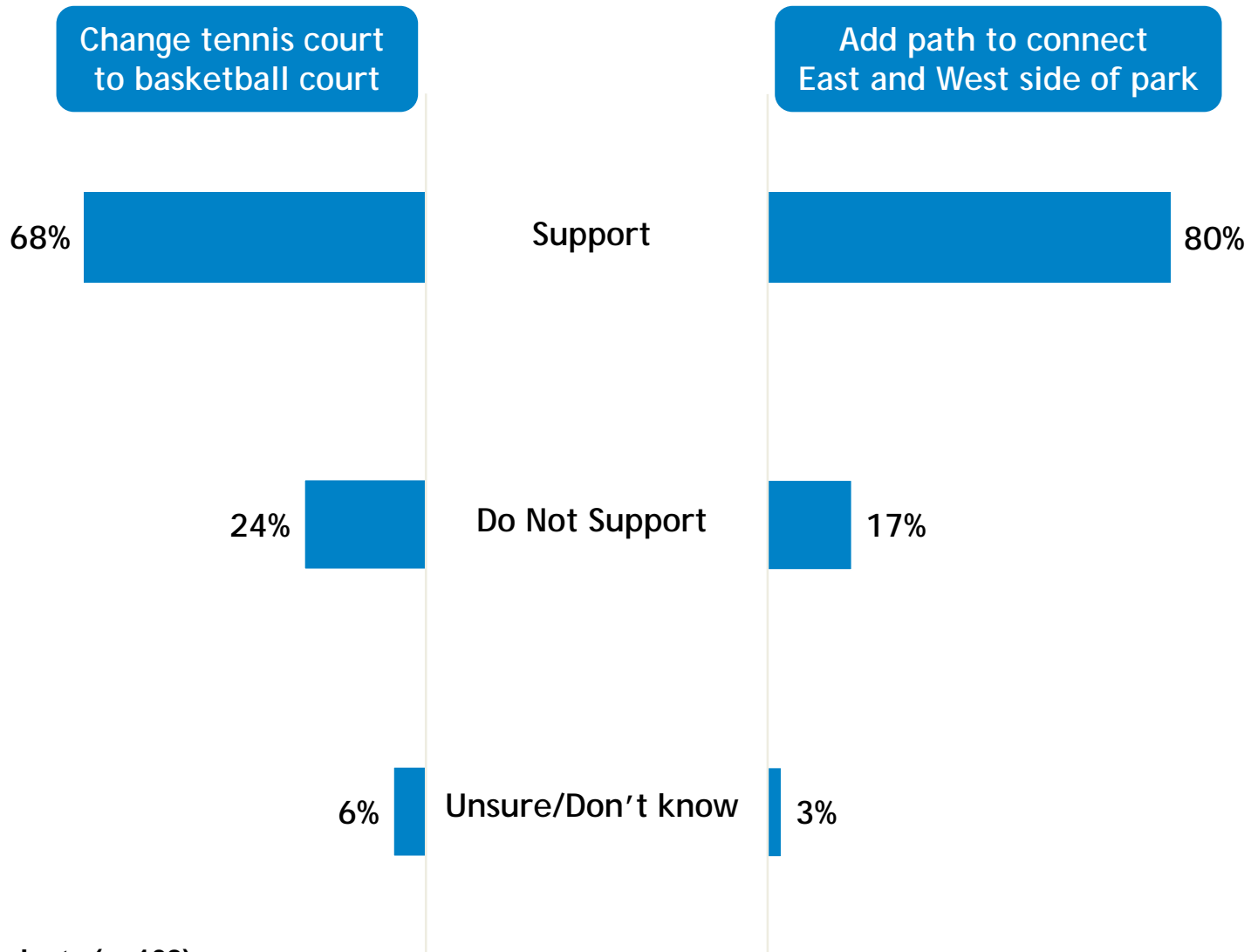


**Base: All respondents (n=108)**

***How do you currently use Pandora Park?***



# Support for Proposed Changes to Pandora Park



Base: All respondents (n=108)

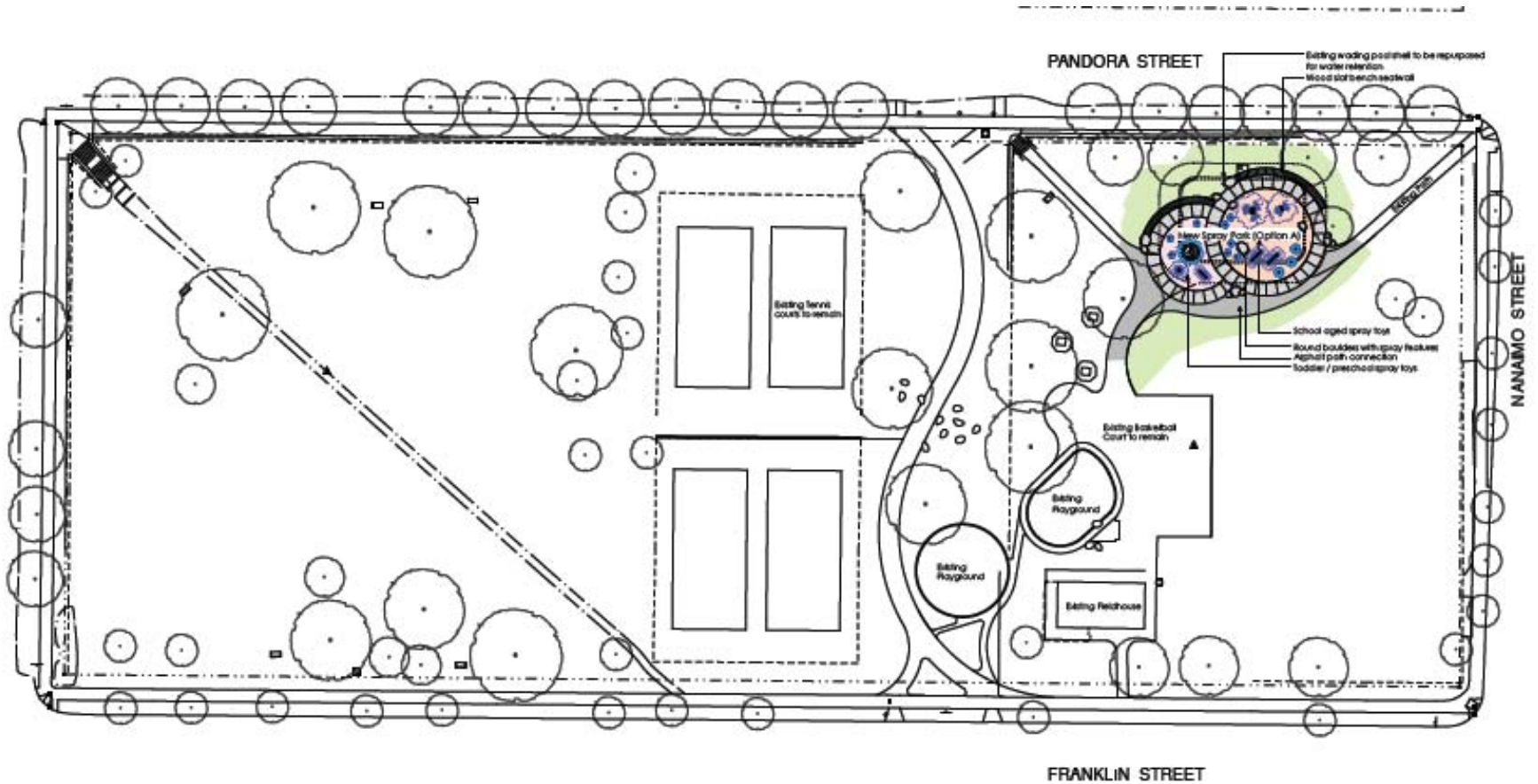
*Do you support the proposal to change one tennis court to a basketball court? (as shown in Option B below)?*  
*Do you support the proposal to add a path to connect the East and West side of the park? (as shown in Option B below)?*



# Pandora Park Design Options

The following design options (“A” and “B”) were tested in the questionnaire:

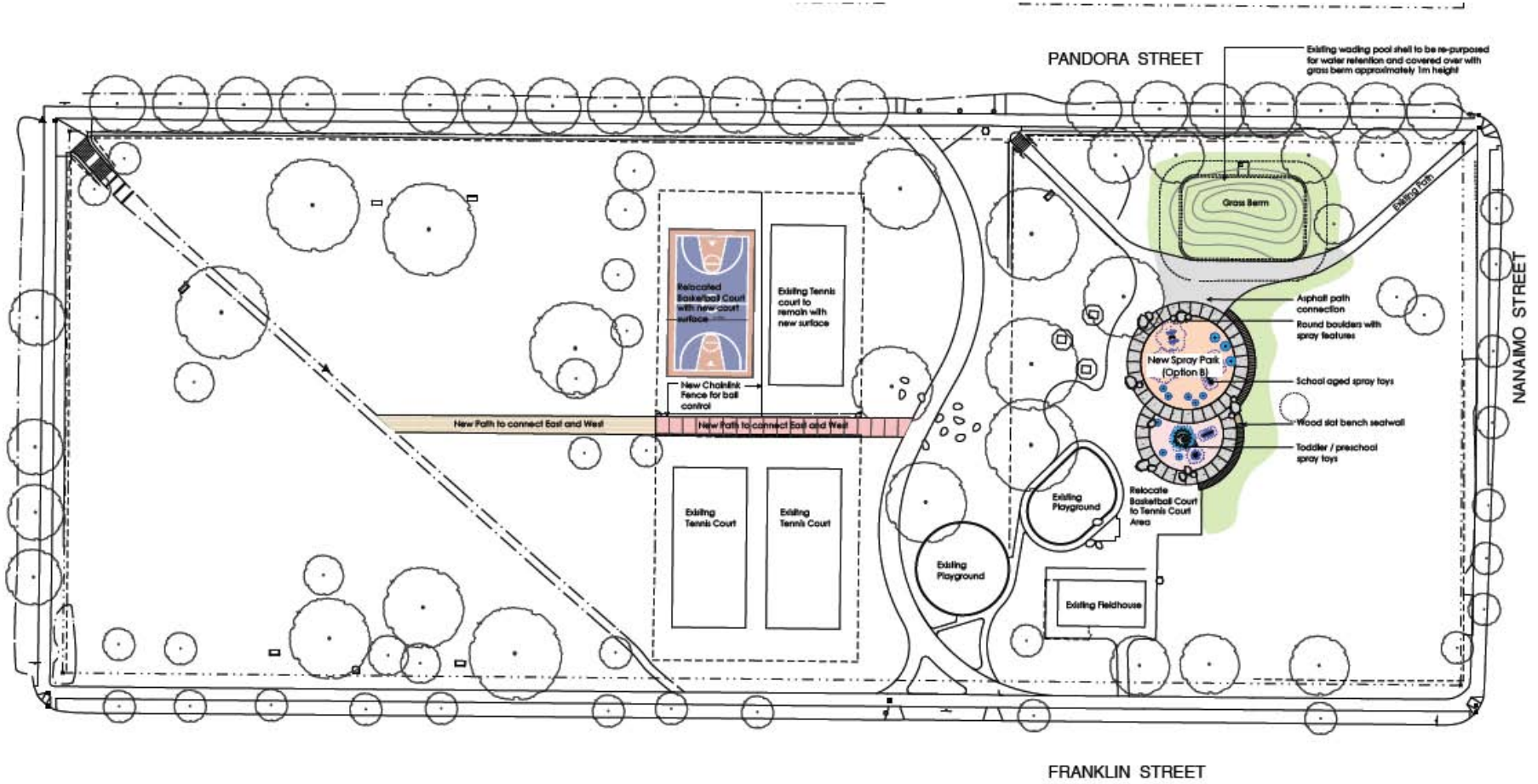
## Option A





# Pandora Park Design Options

## Option B

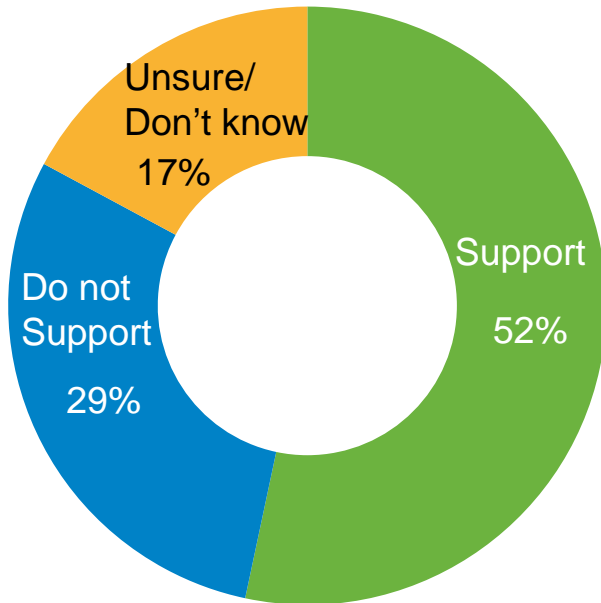




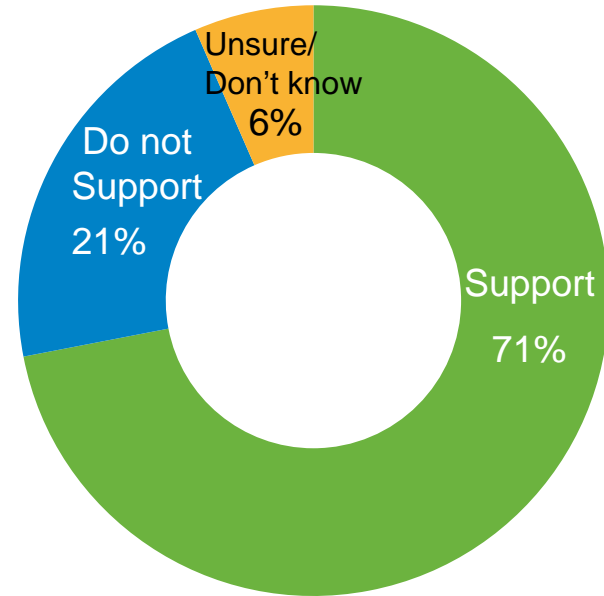


# Support for Design Concepts

**Option A**



**Option B**

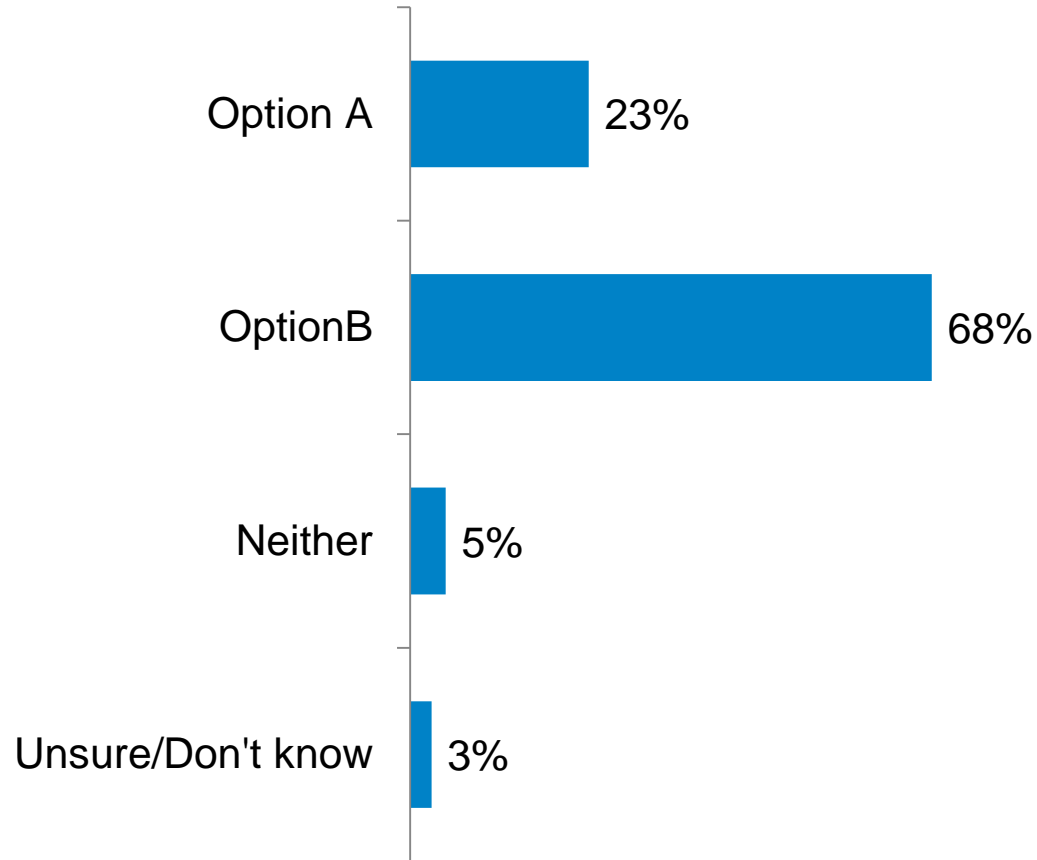


Base: All respondents (n=108)

*The following questions will help us to select a concept option for a children's water spray park to replace the Pandora Park wading pool. Please indicate whether or not you support [Option A] [Option B], shown below.*



# Preferred Design Option

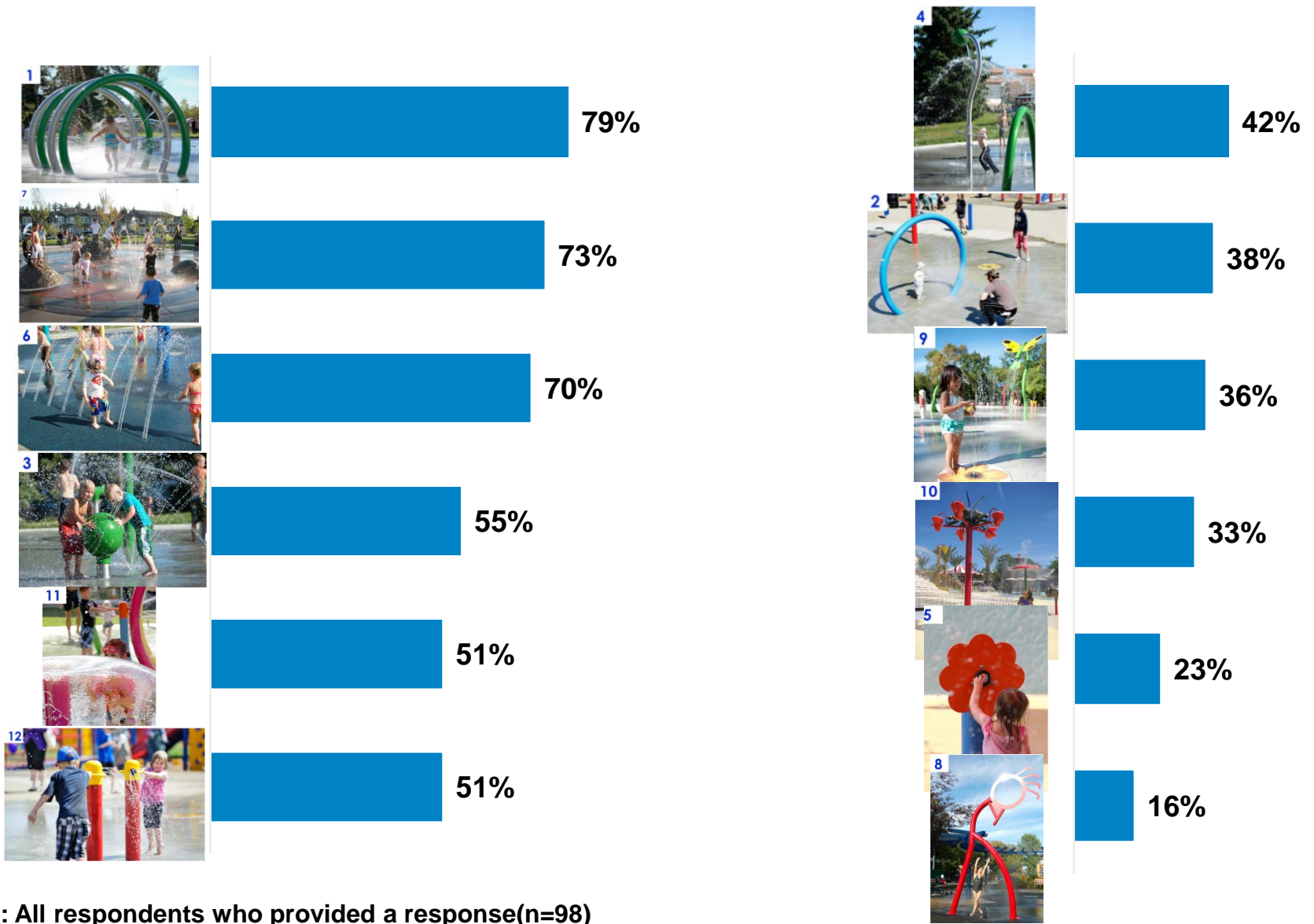


Base: All respondents (n=108)

*Which option do you prefer?*



# Favourite Spray Park Features



Base: All respondents who provided a response(n=98)

Which of the following spray features would you like to see included in the new spray park?



# Comments About Design Option A

Some examples of comments provided about Option A include:

*“It appears to be the less expensive and more reserved option. It would still improve the park.”*

*“It's pretty close to the road. I think if this option is chosen there should be some fences and gates to keep kids from accidentally running out onto Nanaimo St.”*

*“Moving basketball next to tennis court will be too noisy, Too disruptive to an adult's serious tennis game.  
It is not necessary to create a new path to cut across park. Probably will save on cost by not building new basketball court. “A” also retains 4 tennis courts. (How about creating a new tennis court “WALL” for solo tennis practice - so very few in Vancouver!”*

*“We think option A situates the spray park too far away from the existing playground.”*

*“Much better than what's there now, and still always a good sunny location.”*

**Base: Respondents who provided a comment (n=39)**

***Do you have any comments about Option A?***





# Comments About Design Option B

Some examples of comments provided about Option B include:

*“As a parent I appreciate bringing the play clusters closer together. Easier to watch multiple children with less dashing around. And the path through the park will, I feel, make the park more united and used.”*

*“I like the idea of separating the basketball area from the children’s playground and spray park.”*

*“I think it make sense to widen the path between the courts to make it easier to walk through, but I wouldn’t extend it to the west. Keeping this green space intact would be more important than the utility of this path. Is there anything else that could be done with the old pool so that it doesn’t just get filled in? Maybe repurposed somehow.”*

*“We support option B for the following reasons:  
1) Close proximity to the existing playground  
2) Central location (away from Pandora/Nanaimo streets and park entrance).”*

*“Looks more welcoming with more pathways. I think they should look at using park for roll around park for small bikes etc.”*

**Base: Respondents who provided a comment (n=50)**

***Do you have any comments about Option B?***



# Reasons for Design Option Preference

Some examples of reasons provided for respondents' preference of either Option A or Option B include:

*“Option A would be a better option: away from the road, more room for people and play structures also makes more sense to have an equal basketball court in fenced area.”*

*“Better usage of space for all families. Different areas for different ages.”*

*“I prefer option B because the spray park will be closer to the playground for kids to move between the two. Also, the grassed berm could be a good place for parents to sit and watch. I appreciate the idea of having a new path connecting East/West, but a new hard surface path is likely not needed and would be better to be left as grass.”*

*“More things are kept for the kids to play, soccer, basketball, and the tennis courts are not separated so they can also use them for other activities like scooters, bikes, roller blading, etc.”*

*“Option B offers greater amenities for the children in our community!”*

*“I like Option B as it improves the basketball court and connects the east and west parts of the park.”*

**Base: Respondents who provided a comment (n=67)**

***If you have a preferred option, please tell us why you prefer this option.***



# Other Spray Park Features Residents Would Like to See Included

Some examples of reasons provided for respondents' preference of either Option A or Option B include:

*"Ponded or "creek" like section, like at Norquay park (but less cement). Kids enjoy water on the ground as much spraying (maybe more?)."*

*"A shallow wading area."*

*"I like the use of natural pieces, like the rocks in #7. Maybe make some "natural" features like brick stream beds as well? Also, important that the features can still be played with when the spray is not on, which is 10 months of the year, so features that don't just look like they are waiting for water.... Sad and dead and wintery."*

*"Most of the above examples of spray are fine. Especially Interactive equipment (ability to spray others with nozzles)."*

*"Small water channel with a sandbox like Trout Lake."*

*"If the ground covering can be that spongy, recycled tire surface that seems non-slip that may be good in this high-activity area."*

**Base: Respondents who provided a comment (n=67)**

***Are there any other features you would like to see included in the new children's water spray park?***