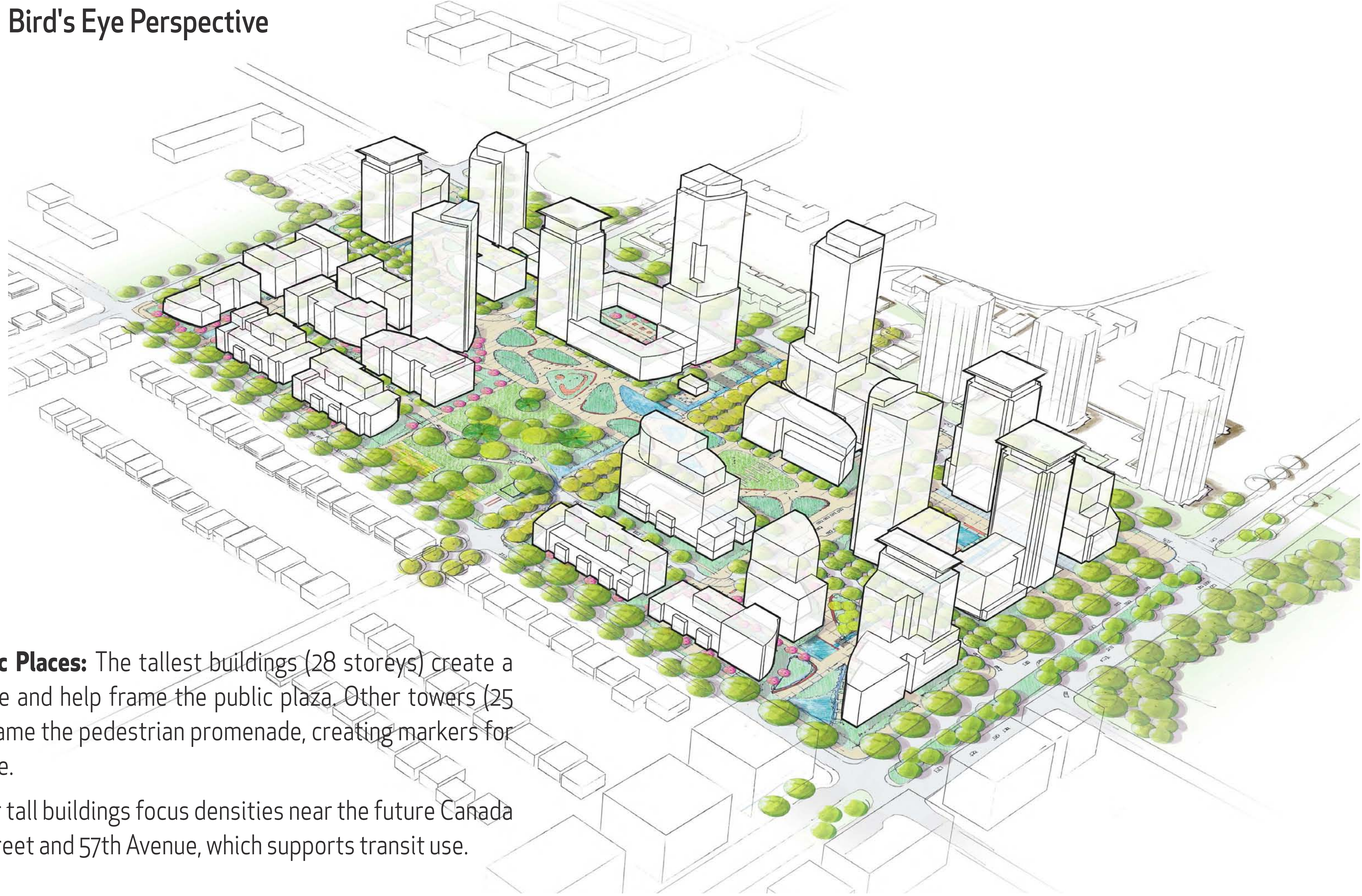
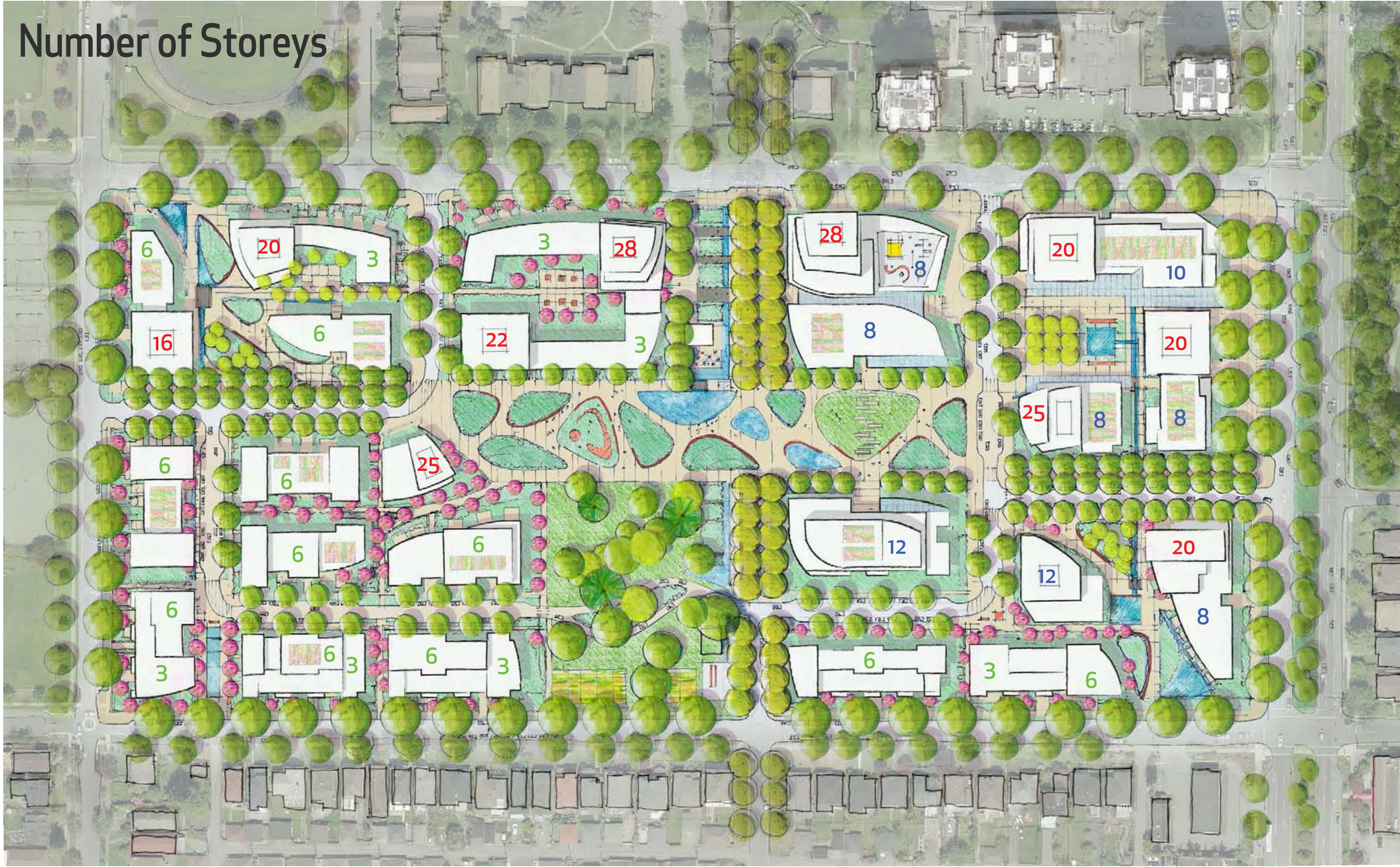


# Building Heights and Shadow Study

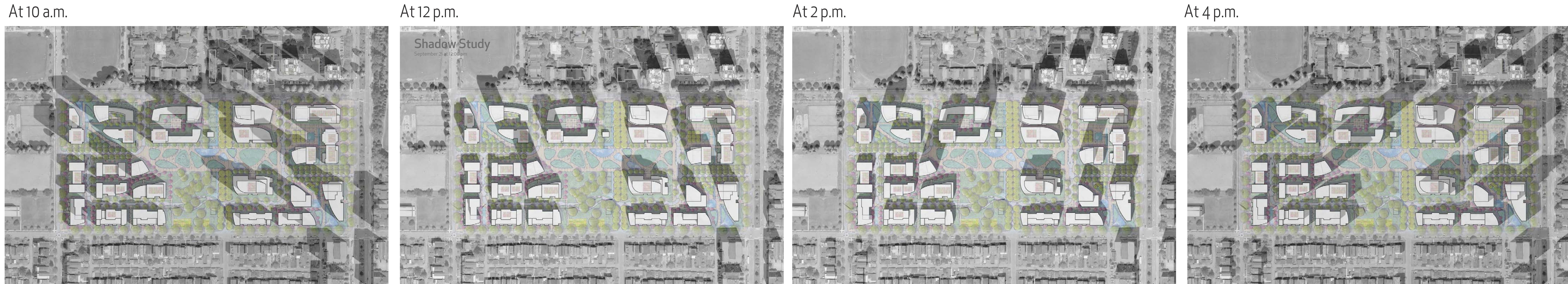
maximizing sun access in parks and creating gentle transitions to neighbours



- **Sun Access:** The tallest buildings are generally positioned along the northern perimeter of the site, which maximizes southern exposure (sunshine) in parks and the southern half of the site.
- **Sensitive Transition to Neighbours:** The lowest buildings are positioned along 59th Avenue and Heather Street, protecting views and offering a gentle transition to neighbouring homes and schools.

- **Marking Important Public Places:** The tallest buildings (28 storeys) create a gateway from 57th Avenue and help frame the public plaza. Other towers (25 storeys and 27 storeys) frame the pedestrian promenade, creating markers for this important public space.
- **Supporting Transit:** Other tall buildings focus densities near the future Canada Line Station at Cambie Street and 57th Avenue, which supports transit use.

## Shadow Analysis (at the Equinox - September 21 or March 21)



# Views into the Site

① Looking west from Cambie Street and 57th Avenue



② Looking northwest from Cambie Street and 59th Avenue



# Views into the Site

③ Looking north from 59th Avenue at approximately Ash Street



④ Looking southeast from Heather Street and 57th Avenue



# Views from Within the Site

