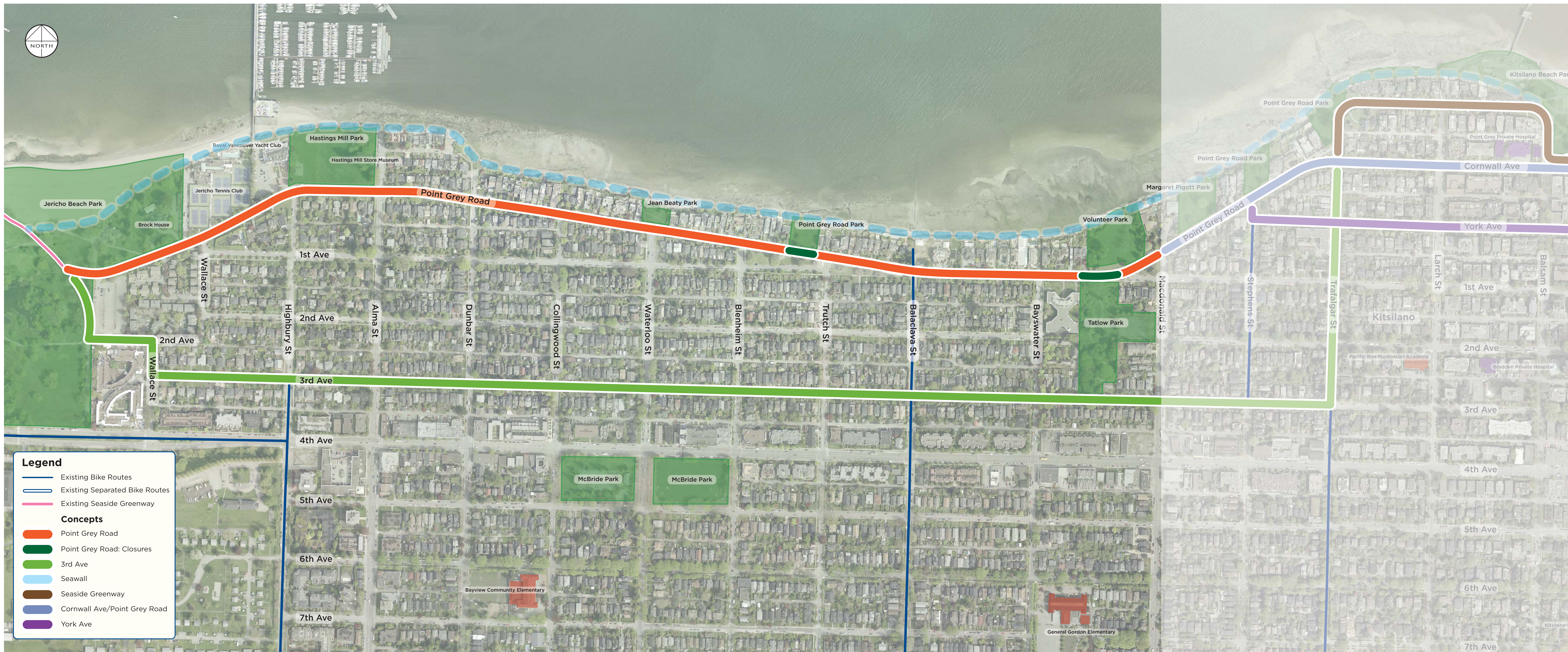


Ideas - Jericho Beach to Macdonald St



**POINT GREY -
CORNWALL CORRIDOR**



| Ideas | |
|------------------|---------------------------------------------------------------------------------------------------------------------------|
| Point Grey Road | Make pedestrian improvements and separate cyclists from traffic |
| Point Grey Road | Close sections of Point Grey Road, extend park space across road, creating a local street |
| 3rd Ave | Make pedestrian and cycling improvements on this existing local street bikeway |
| Seawall | Upgrades to the seawall are currently being reviewed and information will be reported to City Council at the end of 2013. |
| Other Ideas..... | |

| Existing Conditions | |
|---------------------|---------------------------------------------------------------------------------------------------------------------------------------------------------------------------------------------------------------------------------|
| | High traffic volume, speeding vehicles, cyclists on sidewalk Typically no boulevards, sidewalks directly next to vehicles Easy access to the waterfront and other key destinations |
| | As above |
| | Relatively quiet neighbourhood street Existing parking buffers pedestrians from vehicular traffic Existing sidewalks are in poor condition in some sections |
| | The active transportation corridor project will address existing safety concerns on Point Grey Road and Cornwall Avenue and a gap in the pedestrian and cycling network, and will complement any future changes to the seawall. |

| Existing Conditions | |
|---------------------|------------------------------------------------------------------------------------------------------------------------------------------------------------|
| | High traffic volume, speeding vehicles, cyclists on sidewalk No designated cycling facility Easy access to the waterfront and other key destinations |
| | As above |
| | Moderate traffic volumes Narrow street Topography - some steep hills to climb |

| Existing Conditions | |
|---------------------|-------------------------------------------------------------------------------------------------------------------|
| | Transit route east of Macdonald St Parking, various types Direct route from Burrard Bridge to Jericho Beach |
| | As above |
| | Moderate traffic volumes Narrow street Residential parking on both sides of street |

Ideas - Macdonald St to Burrard St



POINT GREY -
CORNWALL CORRIDOR



| Ideas | |
|--------------------------------|-------------------------------------------------------------------------------------------|
| Seaside Greenway | Improvements to the existing Seaside Greenway including a connection along Chestnut St |
| Cornwall Ave / Point Grey Road | Make pedestrian improvements and separate cyclists from traffic |
| York Ave | Make pedestrian improvements on Cornwall Ave and introduce a cycling facility on York Ave |
| Other Ideas..... | |

| Existing Conditions | |
|-------------------------------------------------------------------------------------------------------------------------------------------------------------------------------------|---------------------------------------------------------------------------------------------------------------------------------------------------------------------------------|
| <p>Indirect route between Burrard Bridge and Jericho Beach Scenic</p> <p>Direct access to waterfront</p> | <p>Access to key destinations and businesses</p> <p>No boulevards, sidewalks are directly next to vehicles</p> <p>High traffic volumes, cyclists are often on the sidewalks</p> |
| <p>Access to key destinations and businesses</p> <p>No boulevards, sidewalks are directly next to vehicles</p> <p>Moderate traffic volumes, cyclists are often on the sidewalks</p> | |

| Existing Conditions | |
|-----------------------------------------------------------------------------------------------------------------|------------------------------------------------------------------------------------------------------------------------------------------------|
| <p>Indirect route between Burrard Bridge and Macdonald St Scenic</p> <p>Direct access to waterfront</p> | <p>High traffic volumes and speeding vehicles</p> <p>High incidence of cyclist collisions</p> <p>Access to key destinations and businesses</p> |
| <p>Moderate traffic volumes</p> <p>Some blocks of York Ave are narrow</p> <p>Parking both sides of York Ave</p> | |

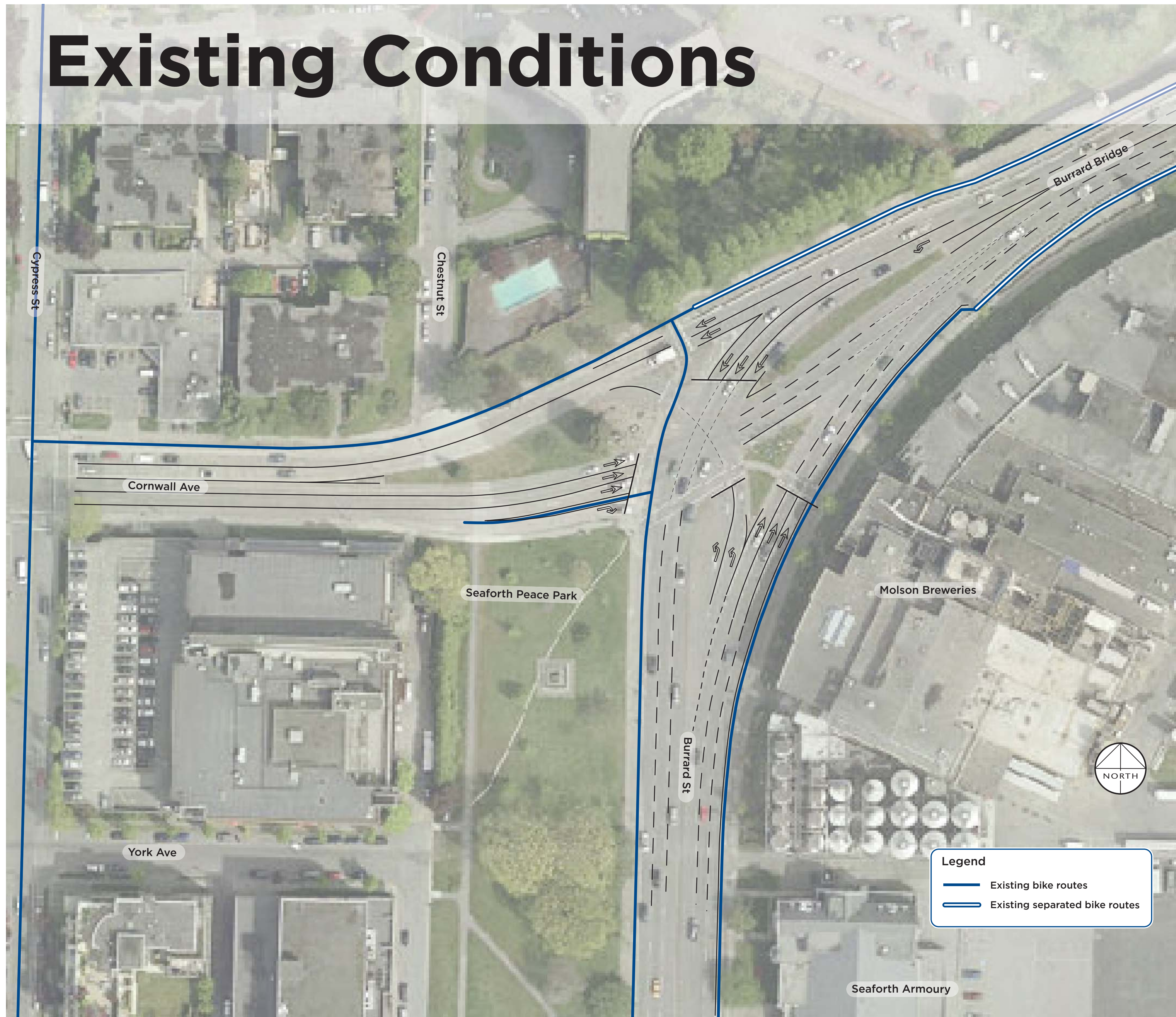
| Existing Conditions | |
|-----------------------------------------------------------------------------------------------------------------|-----------------------------------------------------------------------------------------------------------------------------------------------------------------------------|
| <p>Motorist and tour bus access on Chestnut St</p> | <p>Direct access from Burrard bridge to Jericho Beach</p> <p>Frequent transit with closely spaced stops</p> <p>Access to key destinations and businesses (inc. loading)</p> |
| <p>Moderate traffic volumes</p> <p>Some blocks of York Ave are narrow</p> <p>Parking both sides of York Ave</p> | |

Ideas - Burrard St & Cornwall Ave

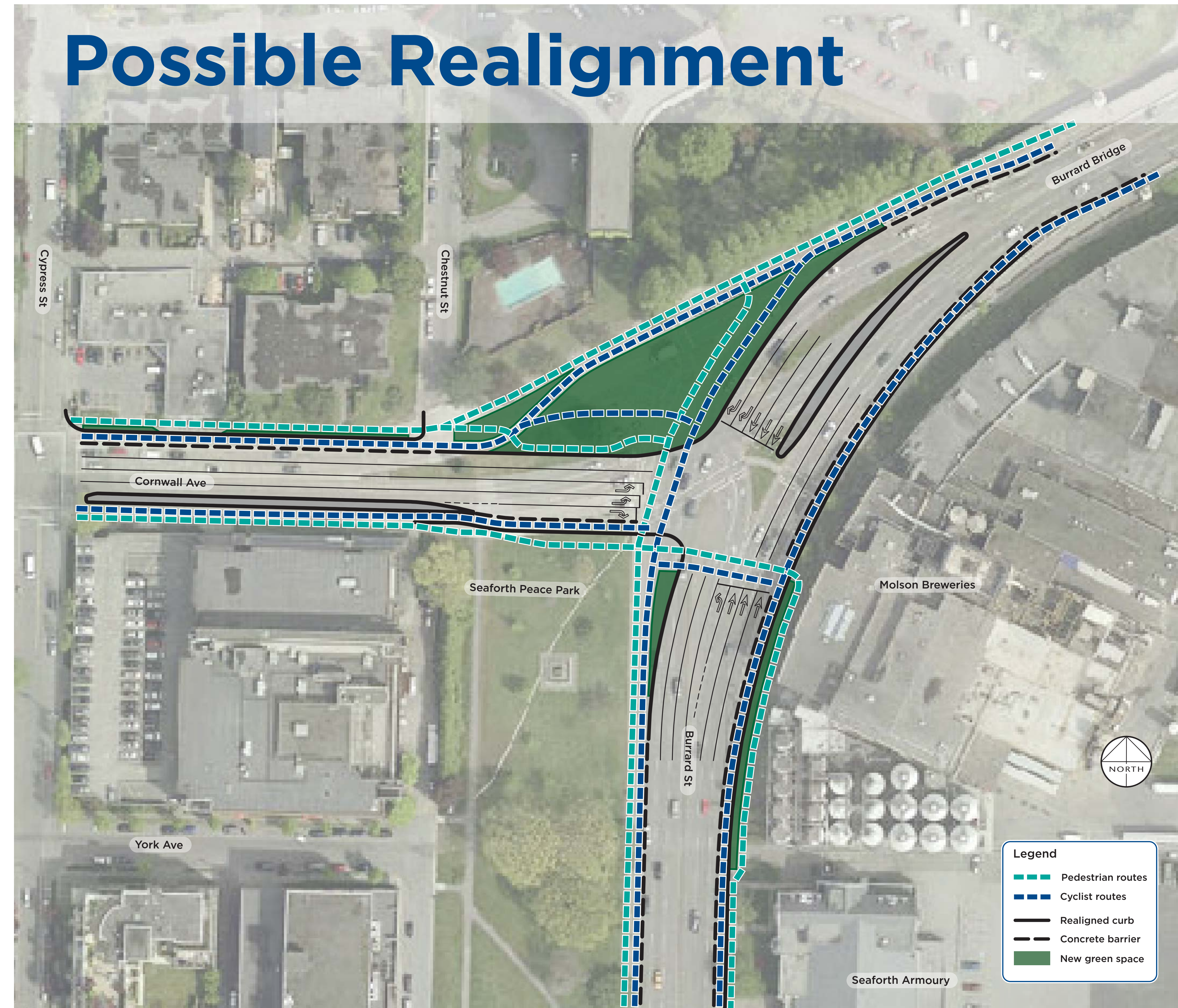


POINT GREY -
CORNWALL CORRIDOR

Existing Conditions



Possible Realignment



Existing Conditions

- Pedestrians have to make up to 5 crossings to get from one side of Burrard St to the other at this intersection
- Pedestrians have to make 3 crossings to get from one side of Cornwall Ave to the other at this intersection
- Lengthy wait times given the signal operation and delays between individual legs of the intersection
- Bikes on the crosswalks



Existing Conditions

- Cyclists and pedestrians share the same crosswalks
- Cyclists have to make multiple crossings to get from one side of Burrard St to the other at this intersection
- Cyclists have to make multiple crossings to get from one side of Cornwall Ave to the other at this intersection



Existing Conditions

- Direct access between Burrard Bridge to/from Cornwall Ave and Burrard St
- Busy bus route



Concept

- Pedestrians would have shorter and fewer crossings
- Pedestrians would have shorter wait times to cross the intersection
- Separated marked crossings for pedestrians and cyclists
- More green space



Concept

- Cyclists would have shorter and fewer separated marked bike crossings



Concept

- Maintain the same number of lanes on and off the bridge and maintain all motor vehicle movements
- Simplified intersection configuration
- Better signal visibility