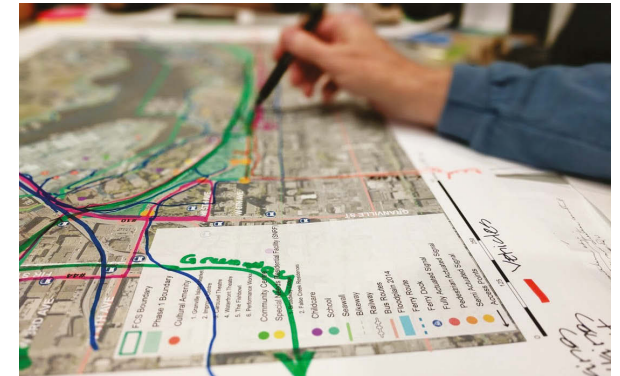


WORKSHOP 5: transportation

workshop summary
january 24, 2018

WORKSHOP OUTLINE

1. Welcome & introductions
2. Presentation: existing transportation networks, assets, and connections
3. Mapping how we travel - exercise & discussion
4. Presentation: imagining the future of False Creek South
5. Future transportation scenario building - group breakout exercise and discussion
6. Gallery walk
7. Closing, next steps, thank you



January 24, 2018
5:00 pm - 8:00 pm

Creekside Community Centre
1 Athletes Way
Vancouver, BC

65 workshop participants



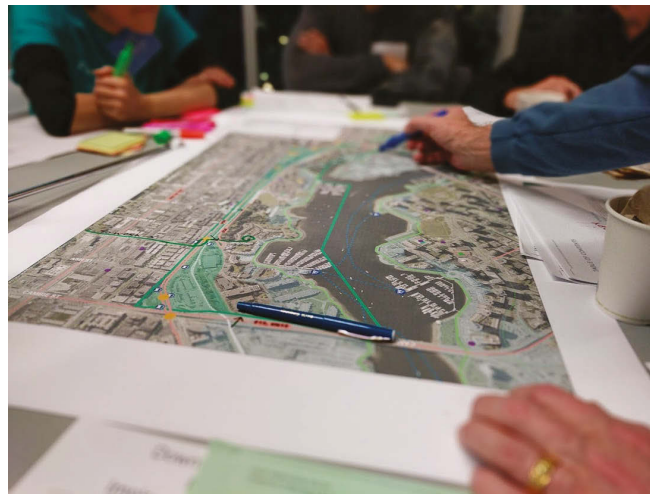
KEY THEMES

After a presentation, workshop participants were asked to map and discuss:

- **COMMUNITY:** What works and what does not work about transportation in False Creek South today?
- **FUTURE:** What might future transportation opportunities in False Creek South look like?

The key ideas were collected and organized into major themes:

- Improve **ease of movement** in and around False Creek South
- Increase **points of access** (including waterfront connections)
- Enhance a diverse and **integrated transportation network**; and improve to **serve all ages and abilities**
- Support **recreational opportunities** when transportation planning
- Enhance network and **connections to key destinations**
- Foster **placemaking with attractive spaces between connections**



TRIP DIARY EXERCISE

For the first exercise, workshop participants were asked to fill out a trip diary worksheet, logging their daily trips including information such as trip purpose, destination, and mode of travel.

Once participants completed their individual trip diary worksheets, they were asked to share their trips with their group and map their trips using different colours for each mode (biking: green, walking: blue, transit: pink or purple, vehicles: orange or yellow, and red for any other modes).

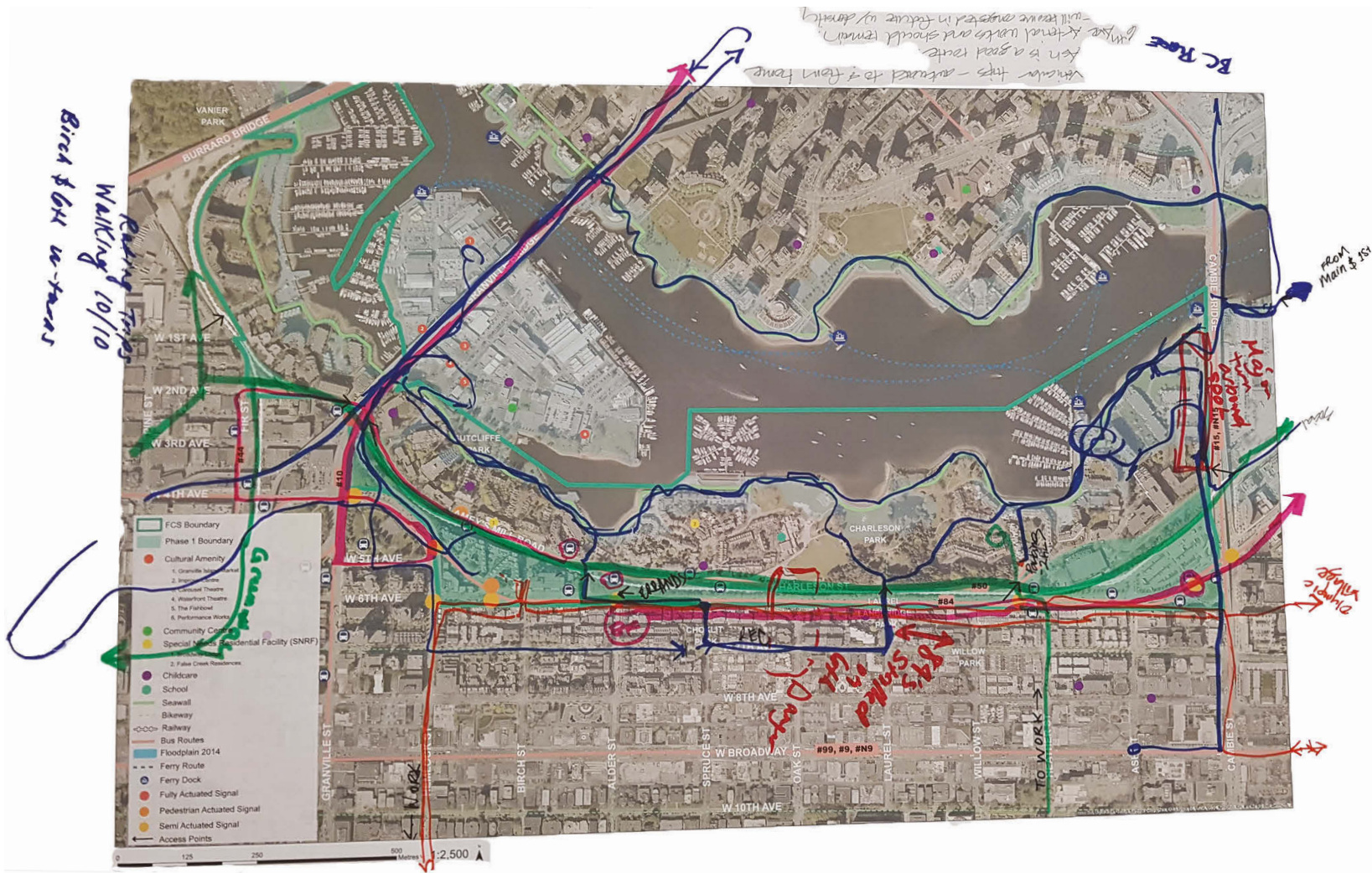
—BIKE —WALK —TRANSIT —VEHICLES —OTHER

TRIP DIARY

IF YOU LIVE IN FALSE CREEK SOUTH...

	Trip #1	Trip #2	Trip #3	Trip #4	Trip #5
Tuesday January 23 rd	Trip purpose? Where was your destination? How did you travel? (walk, bike, transit, car, car share, etc.)	Trip purpose? Where was your destination? How did you travel? (walk, bike, transit, car, car share, etc.)	Trip purpose? Where was your destination? How did you travel? (walk, bike, transit, car, car share, etc.)	Trip purpose? Where was your destination? How did you travel? (walk, bike, transit, car, car share, etc.)	Trip purpose? Where was your destination? How did you travel? (walk, bike, transit, car, car share, etc.)
Sunday January 21 st	Trip purpose? Where was your destination? How did you travel? (walk, bike, transit, car, car share, etc.)	Trip purpose? Where was your destination? How did you travel? (walk, bike, transit, car, car share, etc.)	Trip purpose? Where was your destination? How did you travel? (walk, bike, transit, car, car share, etc.)	Trip purpose? Where was your destination? How did you travel? (walk, bike, transit, car, car share, etc.)	Trip purpose? Where was your destination? How did you travel? (walk, bike, transit, car, car share, etc.)

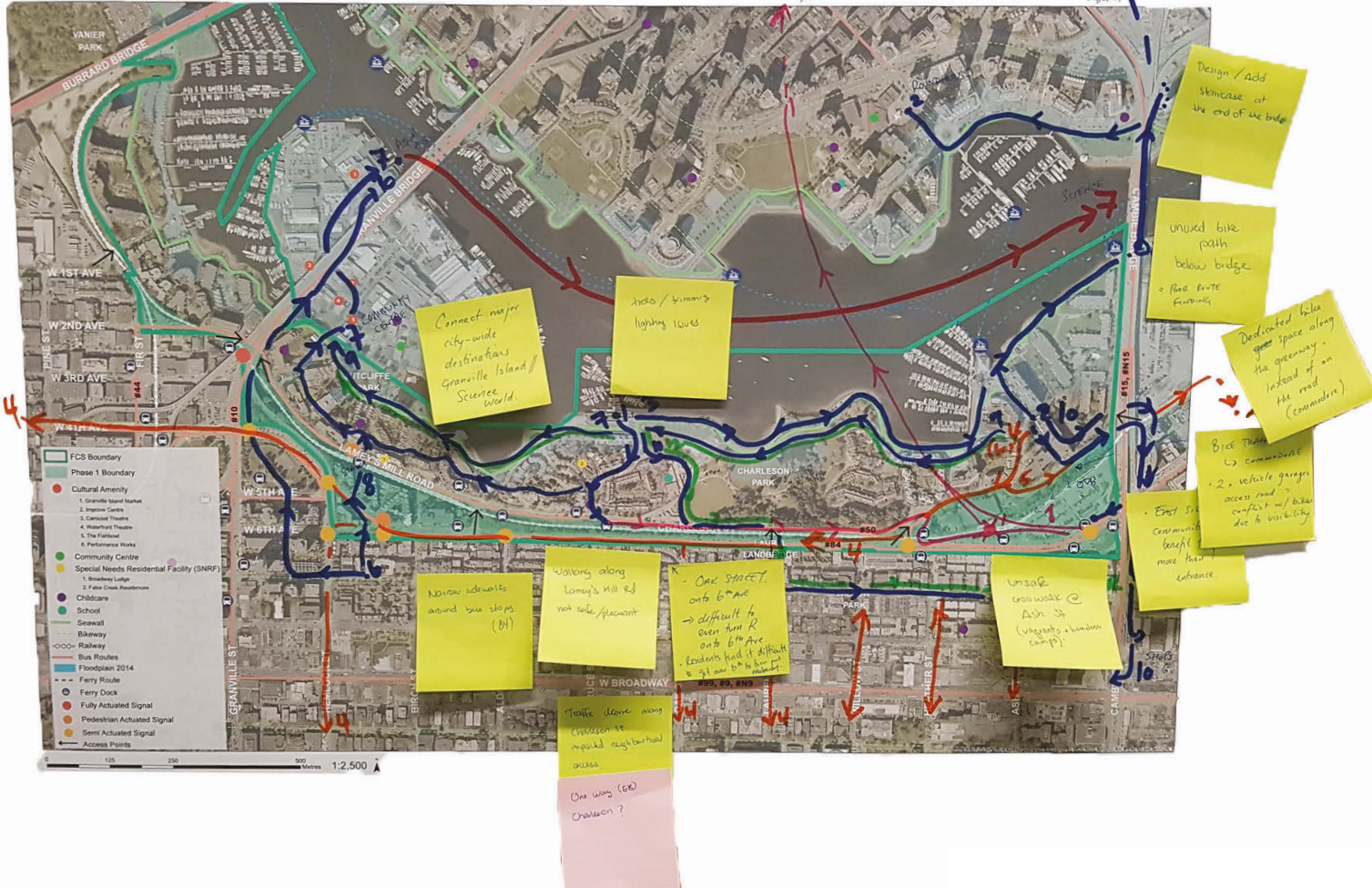
TRIP DIARY EXERCISE



— BIKE — WALK — TRANSIT — VEHICLES — OTHER

TRIP DIARY EXERCISE

— BIKE — WALK — TRANSIT — VEHICLES — OTHER

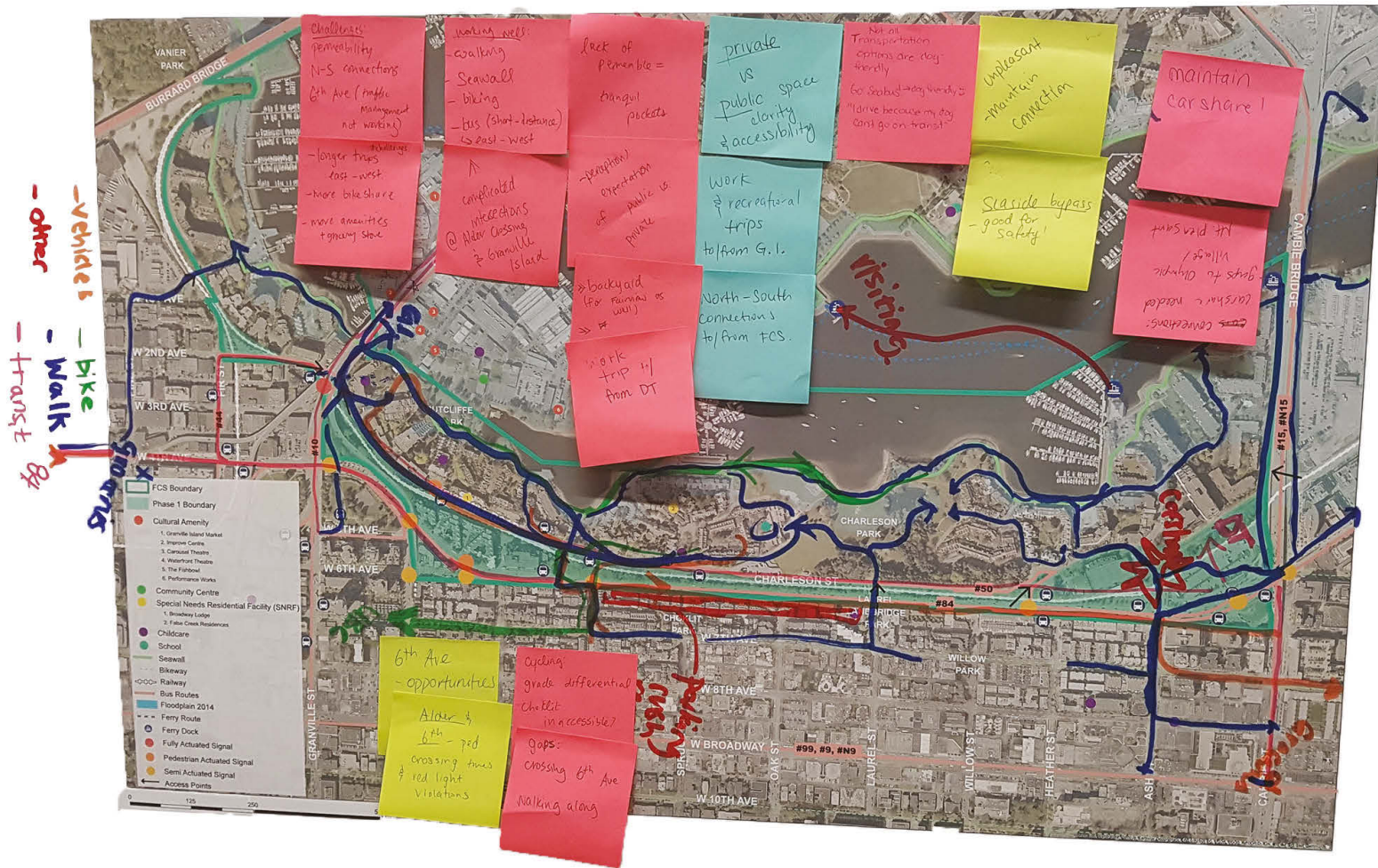


TRIP DIARY EXERCISE



— BIKE — WALK — TRANSIT — VEHICLES — OTHER

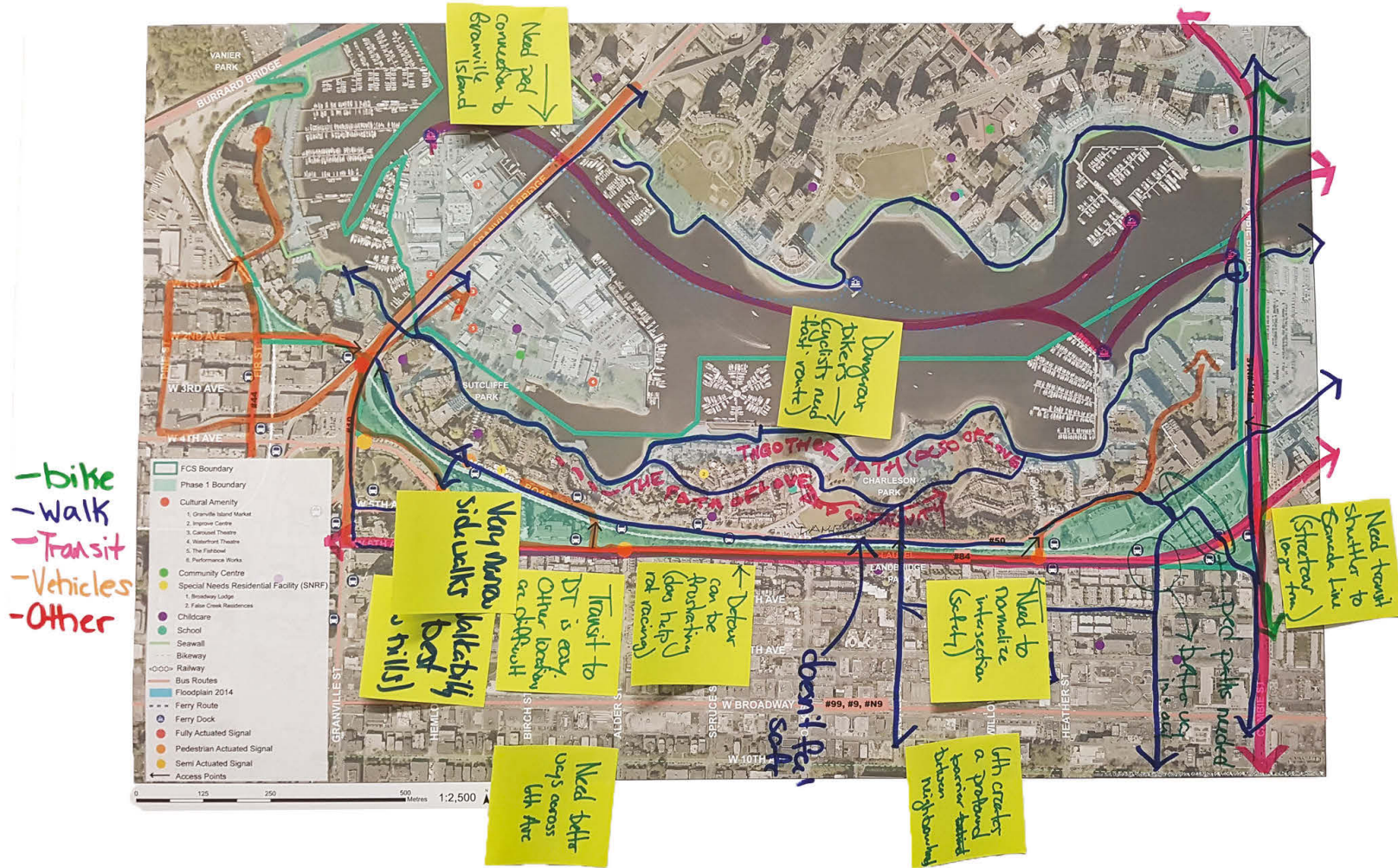
TRIP DIARY EXERCISE



TRIP DIARY EXERCISE



TRIP DIARY EXERCISE



TRIP DIARY EXERCISE



TRIP DIARY EXERCISE



TRIP DIARY EXERCISE



— BIKE — WALK — TRANSIT — VEHICLES — OTHER

TRANSPORTATION SCENARIOS

After the trip diary mapping exercise, workshop participants were asked to imaginatively explore different future transportation scenarios for False Creek South. Each of the scenarios were intended to be an extreme case - an exaggeration to help us imagine what we really want, or what we really don't want for False Creek South. Transportation scenarios:

- The Connected City Hub
- The Extreme Green Zone
- The Health-first Haven
- The Peaceful Utopia
- Choose Your Own Adventure

For Part 1 of the exercise, workshop participants brainstormed all their ideas associated with their scenario. Participants then considered which of their brainstorm ideas related to transportation and picked 2-3 ideas or features they wanted to explore further. For Part 2 of the exercise, each group mapped or drew their ideas for the transportation scenario.

The maps were then displayed around the room for a gallery walk.



CONNECTED CITY HUB



NORTH - SOUTH CONNECTIONS

- Connected to subway
- More north-south connections (to Fairview Slopes, Yaletown, park to park connection across the Creek)
- Escalator up hill!

INTERNAL CONNECTIONS

- Maintain courtyard/enclave walkways and connections (especially important for kids)
- Already well connected! (walking, bike, boat, train, cars, lots of options to downtown)
- Slow connection within neighbourhood, faster outside

TRANSIT

- More 50 buses! (or faster transit to downtown)
- More frequent transit, more passenger capacity (especially on evenings and weekends, if it was there we would all take it. Too unreliable)
- Better transit to shorten transit trips (car is so much faster currently)
- No bus connections around Burrard (bring buses from Burrard Bridge to Broadway and/or 4th)
- More Mobi stations

WATER TRANSIT

- Bike ferries
- Aquabuses as part of transit system

RETAIL & SERVICES

- More shops
- More childcare
- Urban village
- Delivery services (groceries etc.)

GRANVILLE ISLAND

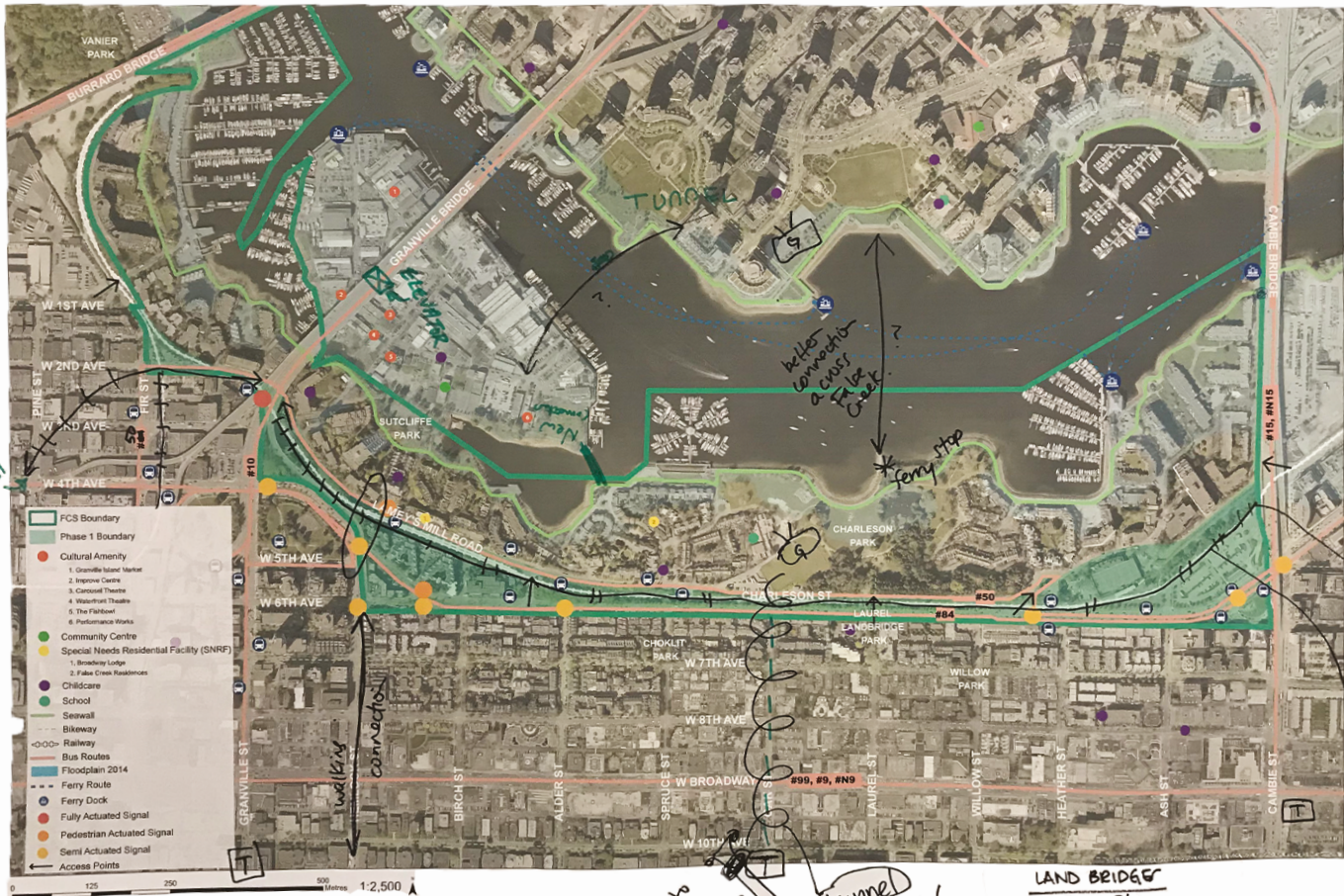
- Car light Granville Island
- Bridge proposed to Granville Island only if uses are appropriate (do not want connection if Granville Island is going to add night life)
- Shuttle connections to Granville Island (or streetcar)

GREENSPACE

- 6th Ave underground (build on top to offset cost, additional park space, greenway)
- Hub for green space, seawall

*RETAIL

CONNECTED CITY HUB



NORTH - SOUTH CONNECTIONS

- Moving walkway to Oak Street subway
- North - south transit connections (eg to Broadway, over 6th Ave and CPR right of way, pedestrian accessible)
- Elevator or escalator up to Broadway to future skytrain station
- Connect north and south of Creek with tunnel boat
- Gondola
- Lower level bike/pedestrian bridge to north shore

WATER/WATERFRONT

- Bike ferries
- Aquabuses as part of transit system
- More direct linkage from the grid to waterfront

TRANSIT

- Transit from FCS to Burrard Bridge, Yaletown, Chinatown (and back to FCS)
- Subway system connecting the Broadway corridor
- Scrap Broadway subway plans (LRT is 1/3 the price, no tunneling cost, no maintenance and security, connectivity at level, more stations, avoids double transit costs)
- Immediately rebuild Olympic Line for streetcar City and private enterprise monies - not TransLink (city bond?)

EASE OF MOVEMENT

- Connected city is a way of getting stuff around - options to move goods efficiently with minimum intrusion on neighbourhood streets
- Easy to get where I want to go fast and cheap and interesting experience
- Connected city = my choice. I can explore and drift around slowly or hop on something to get to a destination fast
- Problem is I have to drive when going to neighbouring cities because they aren't connected
- Connected = the city is mine! I know it, I love it and I can go where I want when I want

BRIDGE CONNECTIONS

- Elevator at Granville Bridge to Yaletown
- Easier access to Granville Bridge
- Bridge to East end of Granville Island
- Bike bridge idea from Charleston Park to Granville Island is a good idea
- Stairs or elevator up from Granville Island to Granville Bridge

CONNECTIONS

- Connection to Arbutus Greenway
- Connections to FC lands (transit, cycle, walk)

False Creek South

CYCLING

- Repurposing the train line as a green zone for bicycles. This will get might speed commuters off 6th Ave and the seawall
- I would like to see cyclists more respectful of pedestrians

OTHER

- eDiver-less cars (especially bad drivers)
- Pedestrian friendly along 6th Ave and Lamey's Mill Road

WAYFINDING

- Connected city is clear and welcoming to strangers - good wayfinding and city residents feeling comfortable and well served so happy to host
- Wayfinding signage

LAND BRIDGE

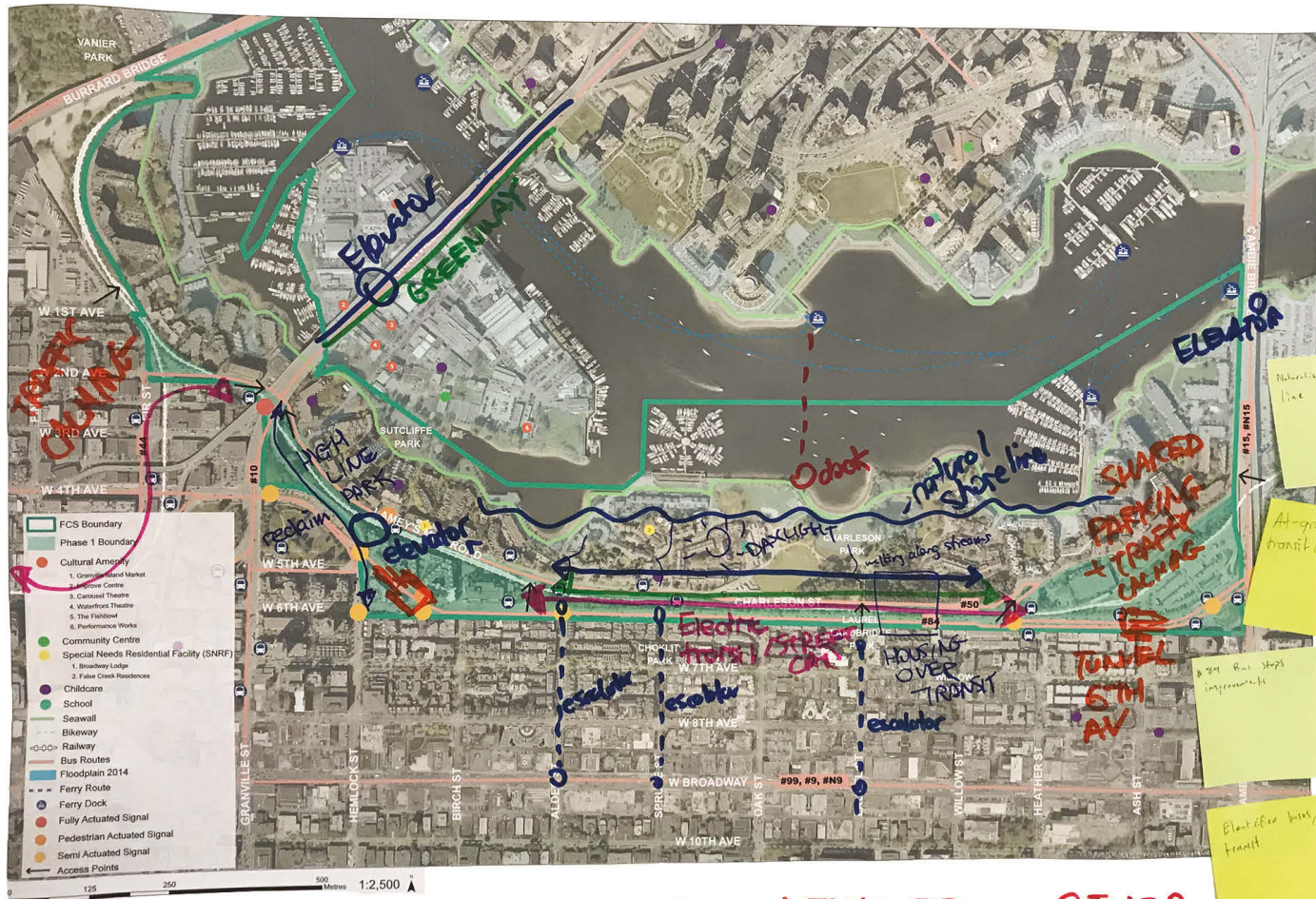
- Oak St.
- Laurel.
- Spruce - connected to Gr. Is bridge

*mm
ways
of*

*connect better to Gr. Is with street car
subway instead of street car >*

*Gondola tunnel for or. elevation/grade
Oak St. to Yaletown*

EXTREME GREEN



— BIKE — WALK — TRANSIT — VEHICLES — OTHER

- CONNECTIONS TO ADJACENT AREAS**
- Pedestrian bridges over False Creek
 - Gondola up/down slopes
 - Granville Island elevator
 - Improved aqua-bus/water ferry connections

- CONNECTIONS WITHIN FCS**
- Improve walkability to/from FCS
 - People movers (airport walkways/conveyor belts)

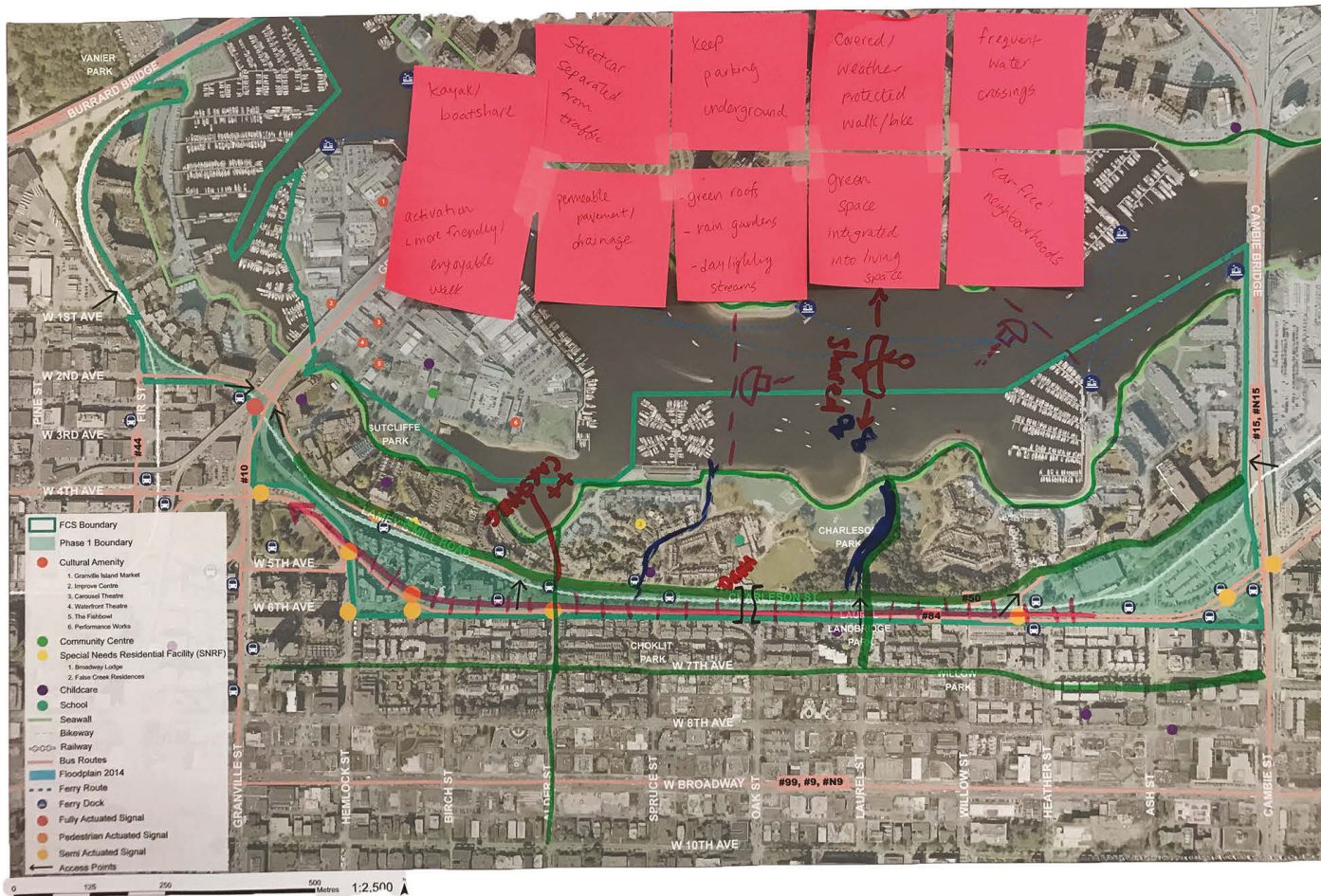
- SHARED MOBILITY**
- Shared mobility (all modes)
 - Bike share strategy for vehicles
 - Kayak share

- ELECTRIC TRANSPORTATION TECHNOLOGY**
- Car charging stations
 - Electric vehicles - skateboards, bikes
 - E-bikes

- INFRASTRUCTURE & DESIGN**
- Subways - grade separated
 - Cover walking and biking routes
 - Streetcar combined with green infrastructure

- OTHER**
- Bus service and reliability
 - Garage, loading (electric, shared, convenient)

EXTREME GREEN



NATURE

- Natural shoreline, no man-made wall
- Detention ponds, habitat - beavers, whales, etc
- Improved water quality (pump outs - no dumping)
- Daylighting streams

ACCESSIBILITY

- More points of access (eg land bridges)
- Permeability (eg water taxis)
- Integration of private transport (connections to False Creek)
- New dock - connect to Laurel Land bridge
- Escalator to Broadway

PARKING

- No parking (car share spots)
- District parking

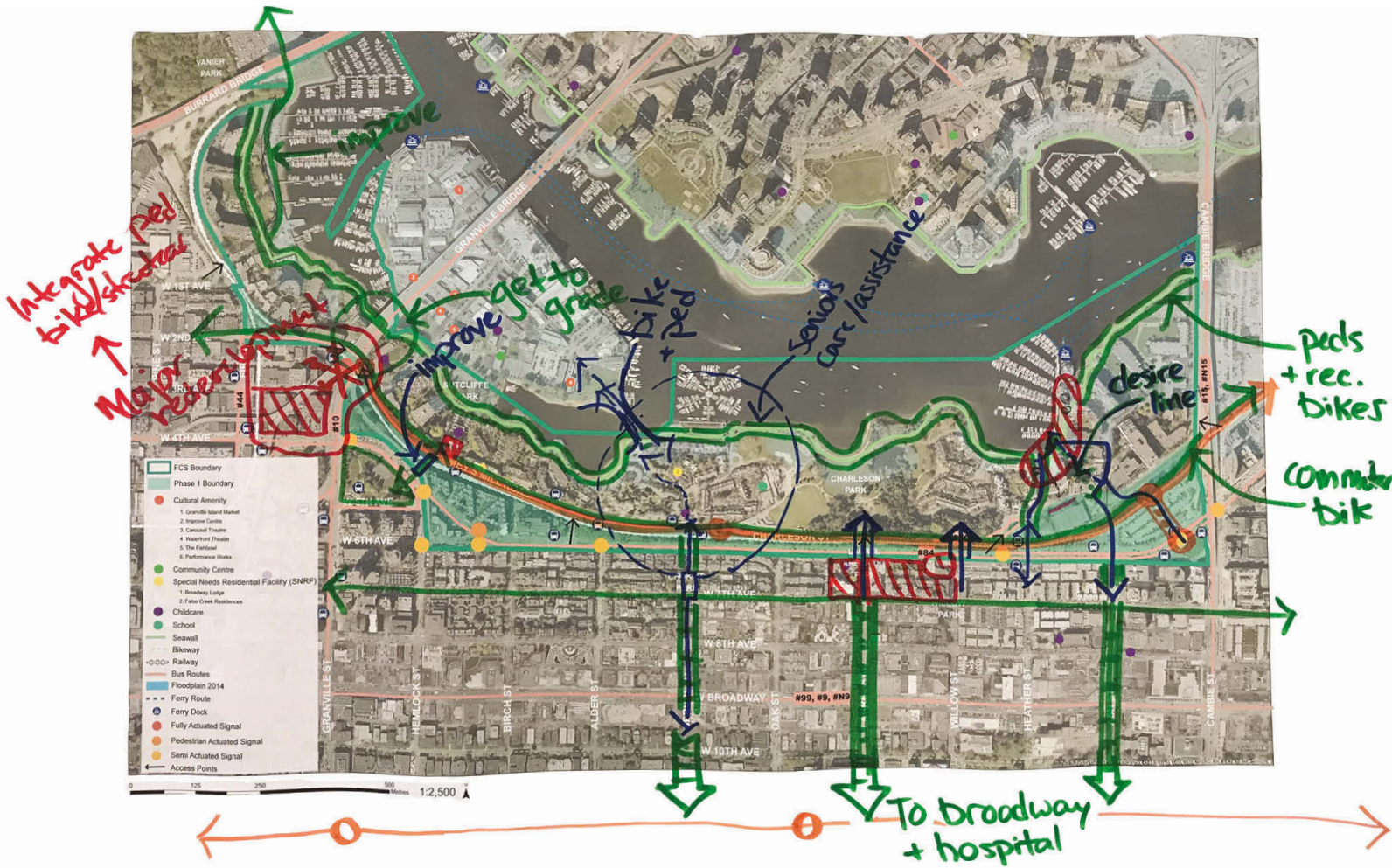
COMMUNITY VIBE

- No increased noise pollution
- Kids walk to school (sense of place)
- Garden plots/community gardens
- 8-80 city

OTHER

- Education
- No auto dealerships/luxury super cars
- Green = density?
- Marine regulation and enforcement

HEALTH-FIRST HAVEN



AGING POPULATION

- Seniors care facility within Spruce and other areas
- Link to seniors care facility to activities/amenities

WALKABILITY

- Encourage walking
- Routes/destinations to entice walking
- Much larger sidewalks for walkers

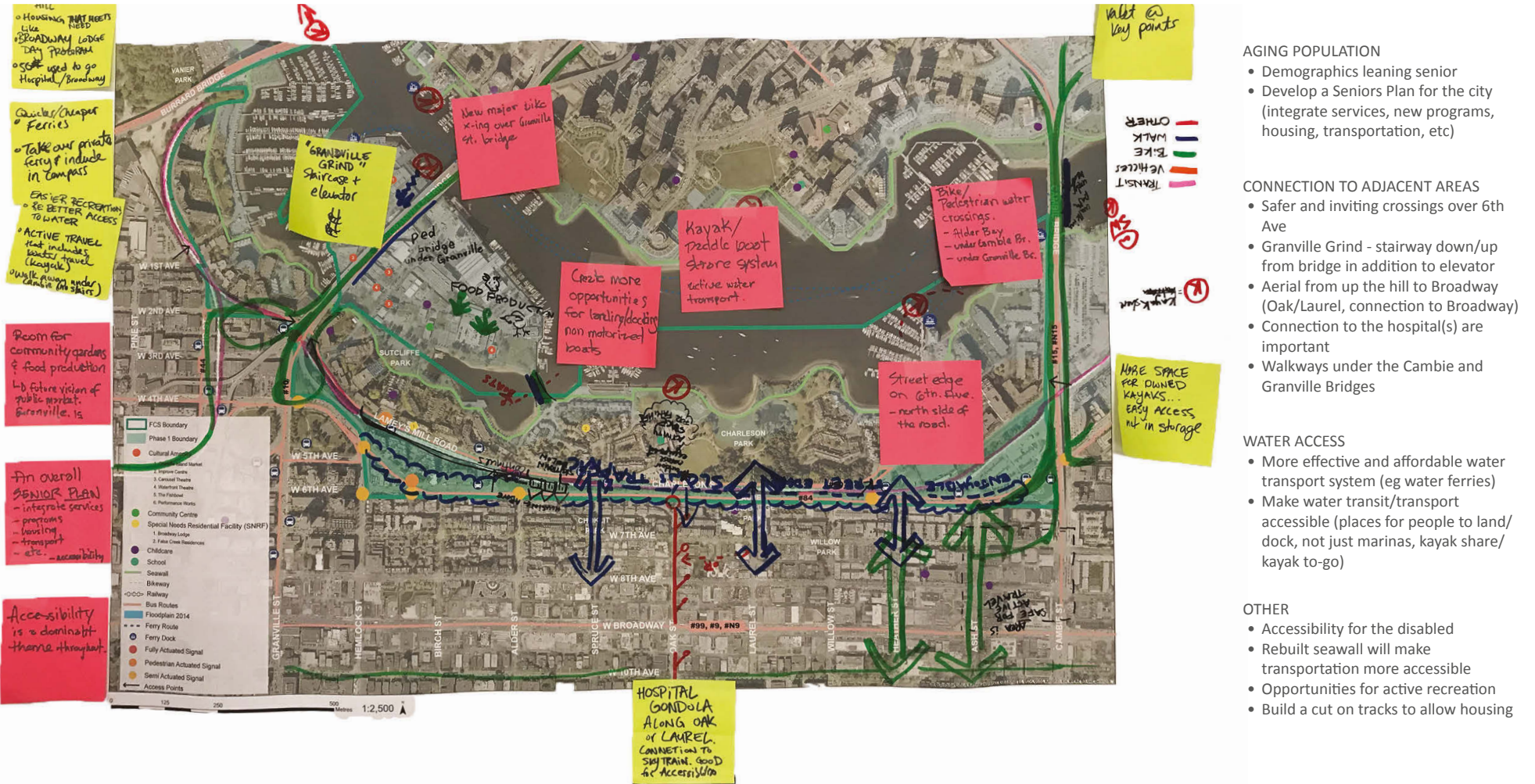
CONNECTIONS

- Connect to regional services (eg hospital, theatre etc)
- Better connection to Granville (fewer cars)

OTHER

- Driver-less car share
- Gathering places
- Need small-scale commercial in FCS
- Strong transit

HEALTH-FIRST HAVEN



- AGING POPULATION**
- Demographics leaning senior
 - Develop a Seniors Plan for the city (integrate services, new programs, housing, transportation, etc)
- CONNECTION TO ADJACENT AREAS**
- Safer and inviting crossings over 6th Ave
 - Granville Grind - stairway down/up from bridge in addition to elevator
 - Aerial from up the hill to Broadway (Oak/Laurel, connection to Broadway)
 - Connection to the hospital(s) are important
 - Walkways under the Cambie and Granville Bridges
- WATER ACCESS**
- More effective and affordable water transport system (eg water ferries)
 - Make water transit/transport accessible (places for people to land/dock, not just marinas, kayak share/kayak to-go)
- OTHER**
- Accessibility for the disabled
 - Rebuilt seawall will make transportation more accessible
 - Opportunities for active recreation
 - Build a cut on tracks to allow housing

PEACEFUL UTOPIA



CONNECTIONS TO ADJACENT AREAS

- Glass tunnels under the water connecting across False Creek
- Dedicated pedestrian bridge (e.g. Millennium Bridge in London or the highline in NYC)
- Ferry system integrated into transit network

WATER ACCESS

- Public access to the water
- Boat share (kayak, rowboat, paddle boats)
- Floating performance venues (activate the water)

NATURAL ENVIRONMENT

- Birds
- Daylighting for water diversion
- A clean False Creek

ENHANCE PUBLIC REALM

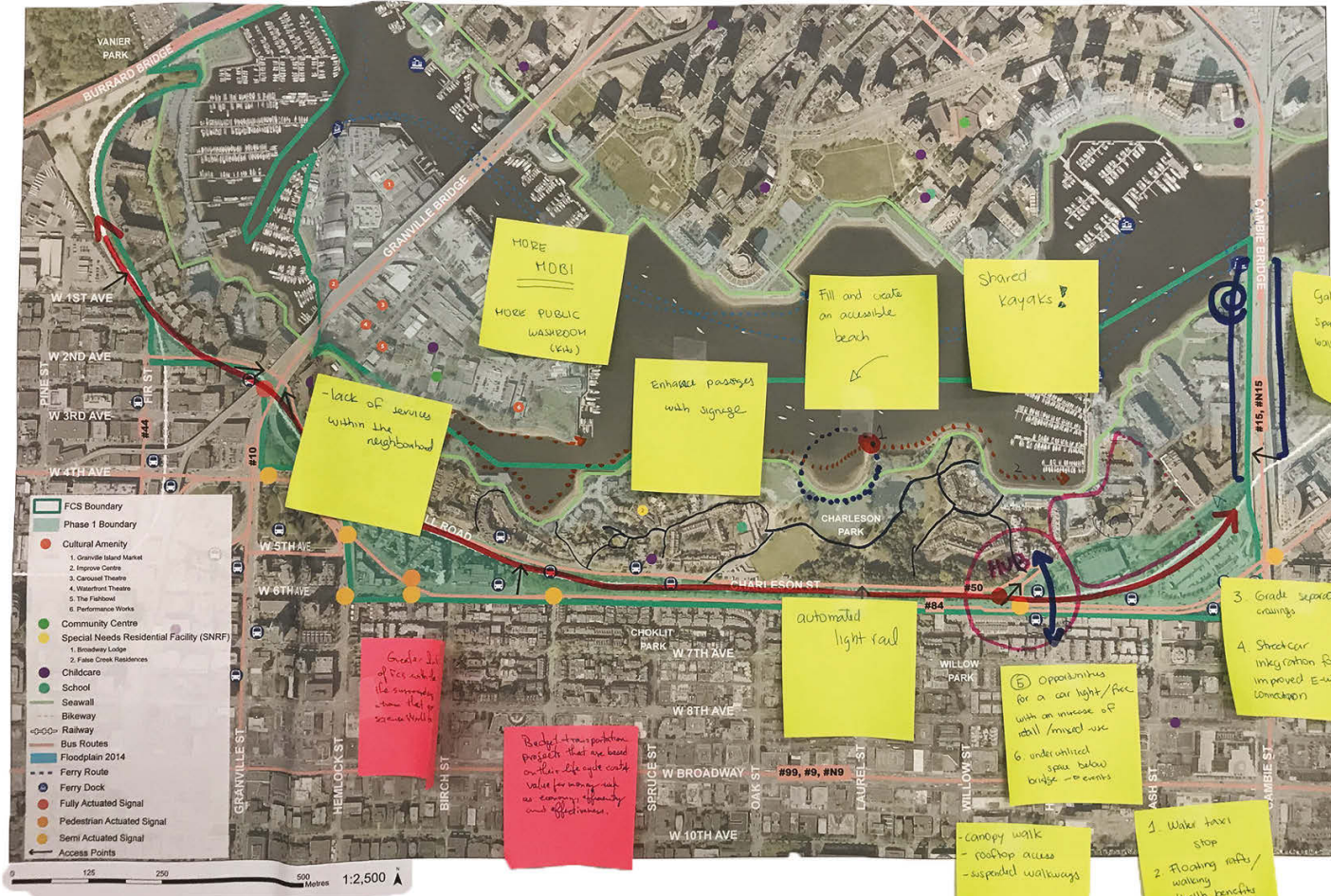
- Cobble streets
- Safe overnight
- Colour
- 6th Ave as a friendly street
- Public labyrinth in Leg-in-Boot Square

OTHER

- Free transit and parking for all modes
- Quiet streets (electric vehicles only, car light)
- Model neighbourhood (local grocery)
- Rooftop parks (greenery)

- Biking
- Walk
- Transit
- Vehicle
- Other

CHOOSE YOUR OWN ADVENTURE



CONNECTIONS TO ADJACENT AREAS

- Bridged connections over 6th Ave
- East/west connections (streetcar infrastructure, connect major destinations)
- Escalator (up the hill in Fairview Slopes)
- Connect to future Broadway Corridor stations

CONNECTIONS WITHIN FCS

- Canopy walk (walkway between new buildings (green roofs), connected north - south as well as east - west)

AGING POPULATION

- Mobility issues (aging population)
- Age friendly mobility (aging population needs assistance moving/similar to younger population)

WATER/WATERFRONT

- Floating walkways (increase the pedestrian realm, like Caesars Bridge, health (stability) benefits, follow the Creek shoreline, on rafts)
- Charleson Beach (north of Charleson Park)
- Increase water taxi stations/destinations
- Active use on the water (kayak share, paddle boarding)

TRANSIT

- Car light precinct (within close proximity of Canada Line station)
- Bus loop = made into new "hub" (departure into neighbourhood)
- Greater focus on "public" transportation vs. "private"
- Automated light rail

PLACEMAKING

- Bridge warming event (similar programming in under-utilized space)

DESIGN

- Spiral space (Guggenheim) performance etc (low-grade walkways)
- Existing street pattern = desirable (meandering/interesting) (better signage/wayfinding, better lighting)
- Hong Kong/Barcelona/Bilbao "style"

ACTIVE TRANSPORTATION

- Bike rickshaw (previously existed) to take you home from the market, etc.
- Lack of Mobi bike stations (needs more in neighbourhood)

CHOOSE YOUR OWN ADVENTURE



ACTIVE TRANSPORTATION

- Raised walking on Cambie and Granville Bridges
- Shared bike/pedestrian path on Cambie Bridge

CONNECTIONS

- Bike lift for slopes/Fairview
- Connection/stairs to Broadway (north-south connections)
- Seawall connection between Granville and Burrard
- Better internal connections (eg Granville Loops and Granville Island)
- Additional crossing for bike/pedestrian across False Creek
- Elevator at Granville Bridge - how about Cambie?

WATER TRANSPORTATION & RECREATION

- Improved use of water (for boats, kayaks, additional ferry access/stops)
- Kayak/canoe/rowboat (share storage on both sides of False Creek)

PLACEMAKING & PUBLIC SPACE

- Bridge place making (wall climbing, plaza underneath)
- 6th Avenue as an opportunity (streetcar and right-of-way and infill housing)
- Place making at streetcar station
- Shared bike/pedestrian path on Cambie Bridge (opportunity for place making - improve the experience of walking - across the bridges (eg Laurel Land bridge)

GROWTH

- Focus growth in FCS (e.g. transit area)
- Impact of growth - service vehicles and laneways
- Impact of city-wide transport needs - not just neighbourhood needs (growth)

INNOVATION

- FCS as a testing zone
- Climate change - rising water temperature impacts (FCS could help with testing of responses)

AGING POPULATION

- Transport for aging population

OTHER

- Golf carts for errand trips