

**BALDOR**

**BALDOR® • RELIANCE**

**Product Information Packet**

**SMART TURNER PUMPS INC**

**B606964**

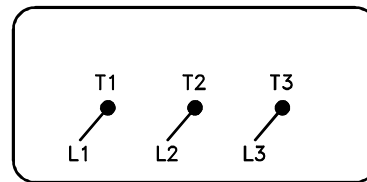
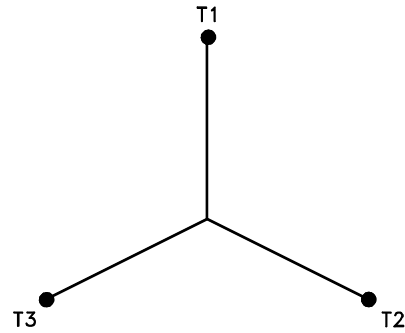
**75.00HP, 1,200,3,60,405TC, TEFC, Footless**

Part Detail			
Model Number:	B606964	Environment:	
Voltage:	575	HP:	75
RPM:	1200	Efficiency:	XE
Phase:	3	Frequency:	60
Inverter Duty:		Enclosure:	TEFC
Frame Group:	0000	Frame Size:	405TC
Features:		Mounting:	
Service Factor:	1	Enclosure Group:	
Weight:	0	Price Symbol:	
Speed Range:		Insulation Class:	F
Nema Design:		Encl. Enhancement:	
Catalog Page:		Dimension Sheet:	SB606964
Connection Diagram:	416820-024	Electric Design:	E07875-A-A003
Single HP:		Get Notes:	
Revision:		Instruction Manual:	
Application:		Epact:	
Scaled Drawing:		Obsolete:	
Last Data Source:		Bearing Type:	
Electrical Type:		Mounting Pos.:	W-6
Ambient:	40	Duty:	Cont
Amps:	69.5	Nominal Eff.:	95.0
Kva Code:		Power Factor:	85.0
Poles:	06	Literature:	



416820-024

A-C MOTOR  
 CONNECTION DIAGRAM  
 STANDARD 3 LEAD Y CONNECTED



(N.P. 1575-BA)

416820-024

REV. DESC: ADD CLASSIFICATION		
REV. LTR: B	VERSION: 02	TDR: 000000539297
FILE: \RSN\00017\954	REVISED: 11: 41: 54 05/04/2010	
MTL: -	BY: RAGRA	

**BALDOR**

A-C MOTOR CONNECTION DIAGRAM 3 LEAD Y CONNECTION  
 SH 1 of 1

REL. S.O.	FRAME	HP	TYPE	PHASE/HERTZ	RPM	VOLTS
	405T	75	P	3/60	1185	575
AMPS	DUTY	AMB °C/ INSUL.	S.F.	NEMA DESIGN	CODE LETTER	ENCL.
69.5	CONT	40/F	1.15	B	G	TEFC
E/S	ROTOR	TEST S.O.	TEST DATE	STATOR RES. @25 °C (BETWEEN LINES)		
496235	418142-71-EE	---	---	.134		

PERFORMANCE


LOAD	HP	AMPERES	RPM	POWER FACTOR %	EFFICIENCY %
NO LOAD	0	24.8	1200	4.75	0
1/4	18.8	29.8	1197	51.5	91.5
2/4	37.5	40.7	1193	73.1	94.4
3/4	56.2	54.3	1190	81.7	94.9
4/4	75.0	69.7	1186	85.1	94.6
5/4	93.8	86.6	1182	86.2	94.1

SPEED TORQUE

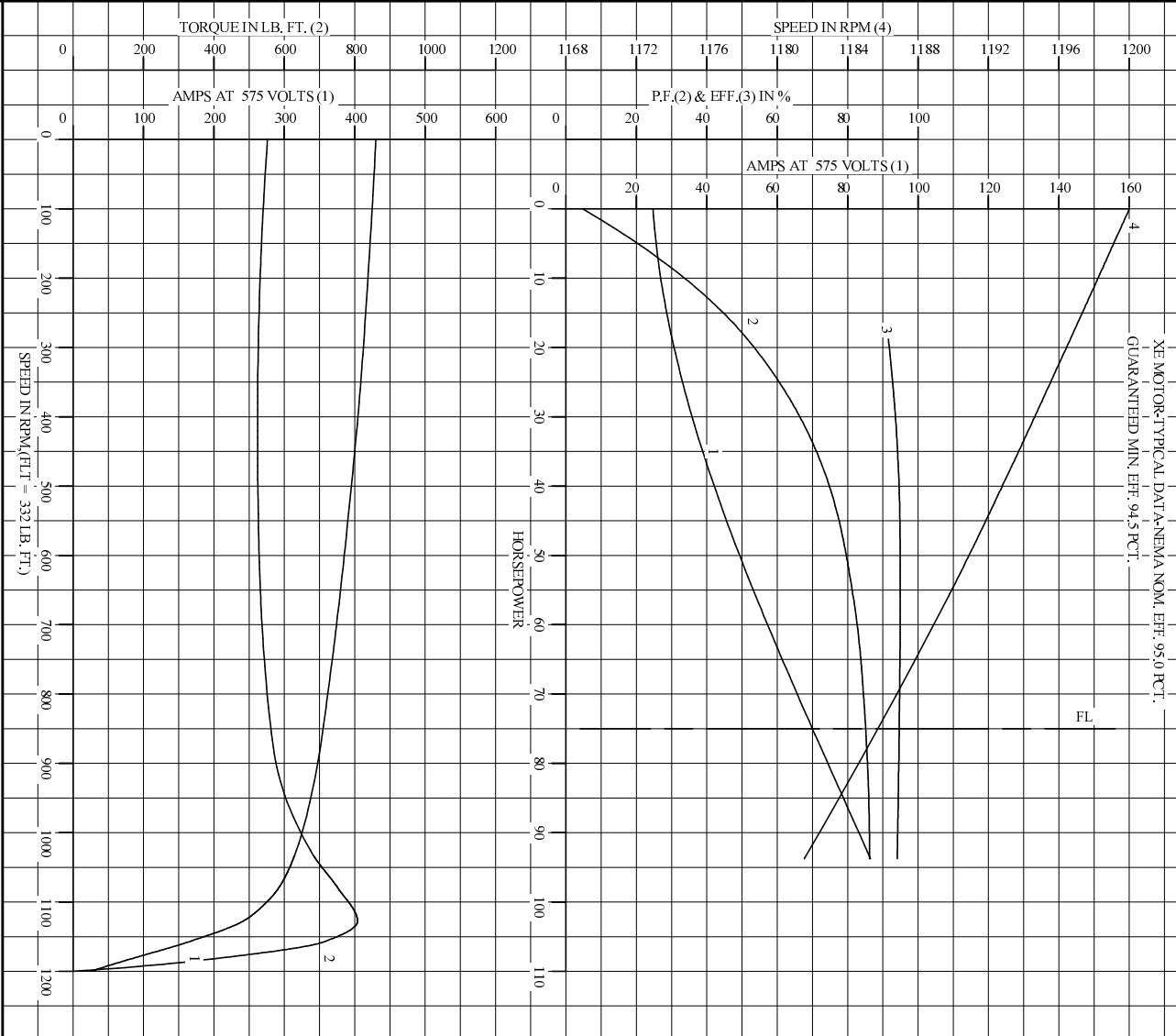
	RPM	TORQUE % FULL LOAD	TORQUE LB.-FT.	AMPERES
LOCKED ROTOR	0	166	552	430
PULL UP	400	158	524	404
BREAKDOWN	1128	243	808	241
FULL LOAD	1186	100	332	69.7

AMPERES SHOWN FOR 575. VOLT CONNECTION. IF OTHER VOLTAGE CONNECTIONS ARE AVAILABLE, THE AMPERES WILL VARY INVERSELY WITH THE RATED VOLTAGE

REMARKS: XE MOTOR-TYPICAL DATA-NEMA NOM. EFF. 95.0 PCT.  
GUARANTEED MIN. EFF. 94.5 PCT.

	DR. BY M.C. BENTON	<b>A-C MOTOR</b> <b>PERFORMANCE DATA</b> E07875-A-A003 ISSUE DATE 02/12/88
	CK. BY D.M. BYRD APP. BY D.M. BYRD DATE 02/12/88	

RET. S.O.	405T	RPM	1185	S.F.	1.15	ROTOR	418142-71-BE
FRAME	405T	VOLTS	575	NEMA DESIGN	B	TEST S.O.	---
HP	75	AMPS	69.5	CODE LETTER	G	TEST DATE	---
TYPE	P	DUTY CONT		ENCLOSURE	TEFC	STATOR RES. @ 25 °C	.134
PHASE/HERTZ	3/60	AMB °C/INSUL	40/F	E/S	496235	OHMS (BETWEEN LINES)	



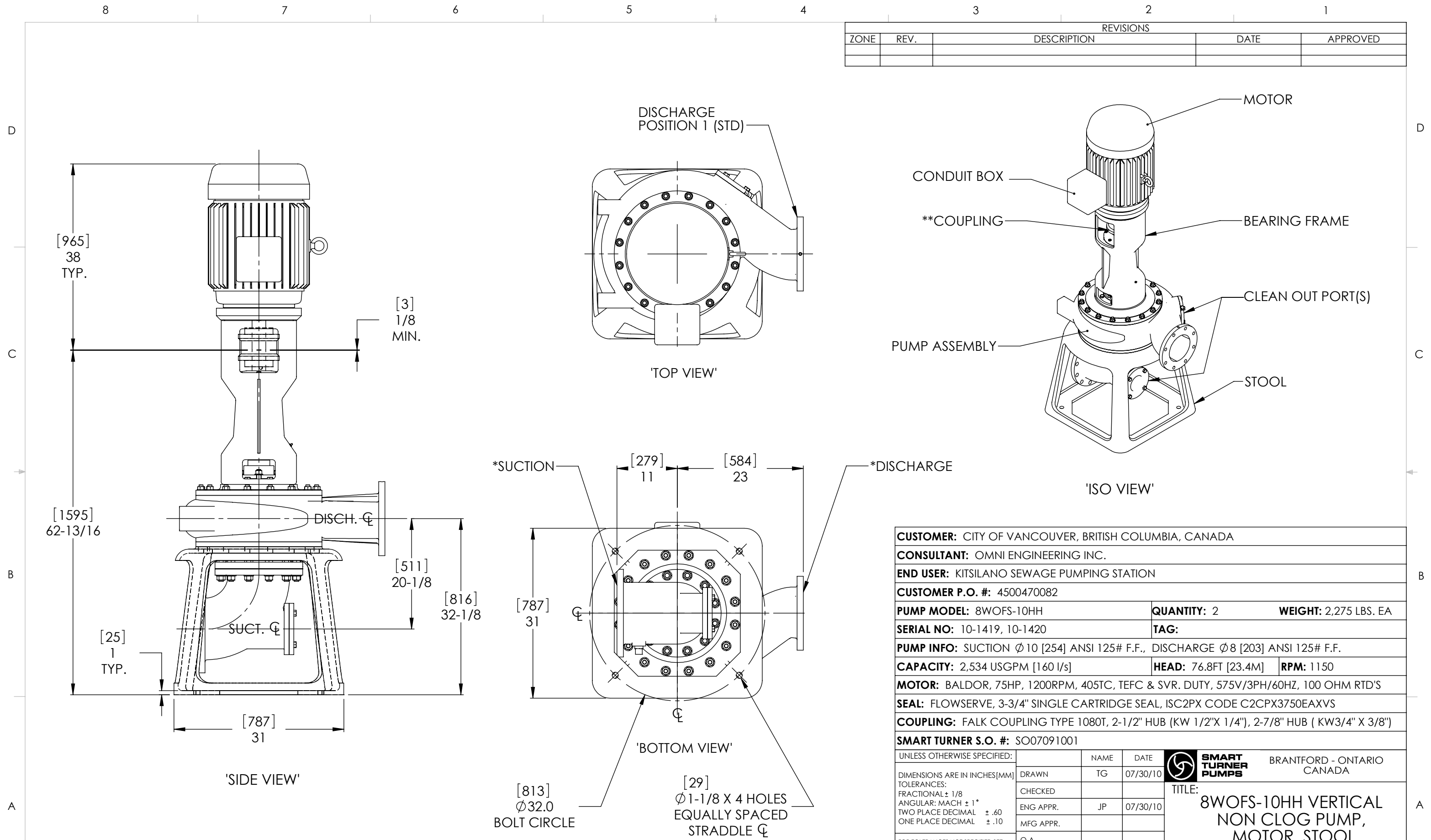
AMPERES SHOWN FOR 575 VOLT CONNECTION, IF OTHER VOLTAGE CONNECTIONS ARE AVAILABLE, THE AMPERES WILL VARY INVERSELY WITH THE RATED VOLTAGE.



DR. BY MAC BENTON  
 CK. BY DM BYRD  
 APP. BY DM BYRD  
 DATE 02/12/88

**A-C MOTOR**  
**PERFORMANCE** E07875-A-1003  
**CURVES** ISSUE DATE 02/12/88

REVISIONS				
ZONE	REV.	DESCRIPTION	DATE	APPROVED



- NOTES:**
- \*FLANGE BOLT HOLES STRADDLE  $\phi$ .
  - \*\*COUPLING GUARD NOT SHOWN.

<b>CUSTOMER:</b> CITY OF VANCOUVER, BRITISH COLUMBIA, CANADA	
<b>CONSULTANT:</b> OMNI ENGINEERING INC.	
<b>END USER:</b> KITSILANO SEWAGE PUMPING STATION	
<b>CUSTOMER P.O. #:</b> 4500470082	
<b>PUMP MODEL:</b> 8WOF5-10HH	<b>QUANTITY:</b> 2 <b>WEIGHT:</b> 2,275 LBS. EA
<b>SERIAL NO:</b> 10-1419, 10-1420	<b>TAG:</b>
<b>PUMP INFO:</b> SUCTION $\phi$ 10 [254] ANSI 125# F.F., DISCHARGE $\phi$ 8 [203] ANSI 125# F.F.	
<b>CAPACITY:</b> 2,534 USGPM [160 l/s]	<b>HEAD:</b> 76.8FT [23.4M] <b>RPM:</b> 1150
<b>MOTOR:</b> BALDOR, 75HP, 1200RPM, 405TC, TEFC & SVR. DUTY, 575V/3PH/60HZ, 100 OHM RTD'S	
<b>SEAL:</b> FLOWSERVE, 3-3/4" SINGLE CARTRIDGE SEAL, ISC2PX CODE C2CPX3750EAXVS	
<b>COUPLING:</b> FALK COUPLING TYPE 1080T, 2-1/2" HUB (KW 1/2" X 1/4"), 2-7/8" HUB (KW 3/4" X 3/8")	
<b>SMART TURNER S.O. #:</b> SO07091001	

UNLESS OTHERWISE SPECIFIED:		NAME	DATE	<b>SMART TURNER PUMPS</b> BRANTFORD - ONTARIO CANADA
DIMENSIONS ARE IN INCHES[MM] TOLERANCES: FRACTIONAL $\pm$ 1/8 ANGULAR: MACH $\pm$ 1° TWO PLACE DECIMAL $\pm$ .60 ONE PLACE DECIMAL $\pm$ .10	DRAWN	TG	07/30/10	
	CHECKED			
	ENG APPR.	JP	07/30/10	
	MFG APPR.			
FOR TOLERANCES NOT SPECIFIED SEE 500-SERIES SHOP PRACTICE STANDARDS		Q.A.		<b>TITLE:</b> 8WOF5-10HH VERTICAL NON CLOG PUMP, MOTOR, STOOL
MATERIAL		<b>PROPRIETARY AND CONFIDENTIAL</b> THE INFORMATION CONTAINED IN THIS DRAWING IS THE SOLE PROPERTY OF SMART TURNER PUMPS INC. ANY REPRODUCTION IN PART OR AS A WHOLE WITHOUT THE WRITTEN PERMISSION OF SMART TURNER PUMPS INC. IS STRICTLY PROHIBITED.		
FINISH		DO NOT SCALE DRAWING		
<b>SIZE</b> B	<b>DWG. NO.</b> F3.0 / SO07091001	<b>REV</b> 0		<b>SHEET 1 OF 1</b>