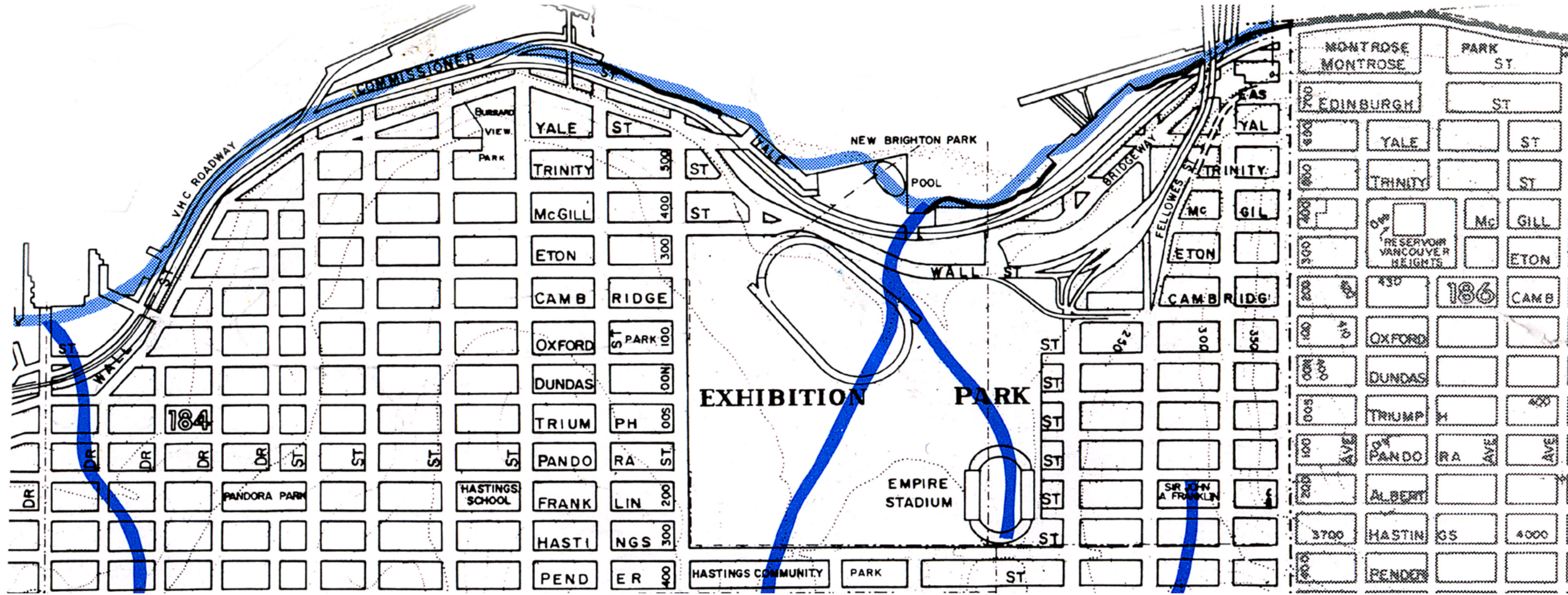


10

The Big Picture

The larger watershed - where is the water coming from?

Creekway Park is an opportunity to construct the first portion of the daylighted stream in Hastings Park. The remainder of the stream will be constructed as the redevelopment of Hastings Park frees up space required for the daylighted stream corridor.



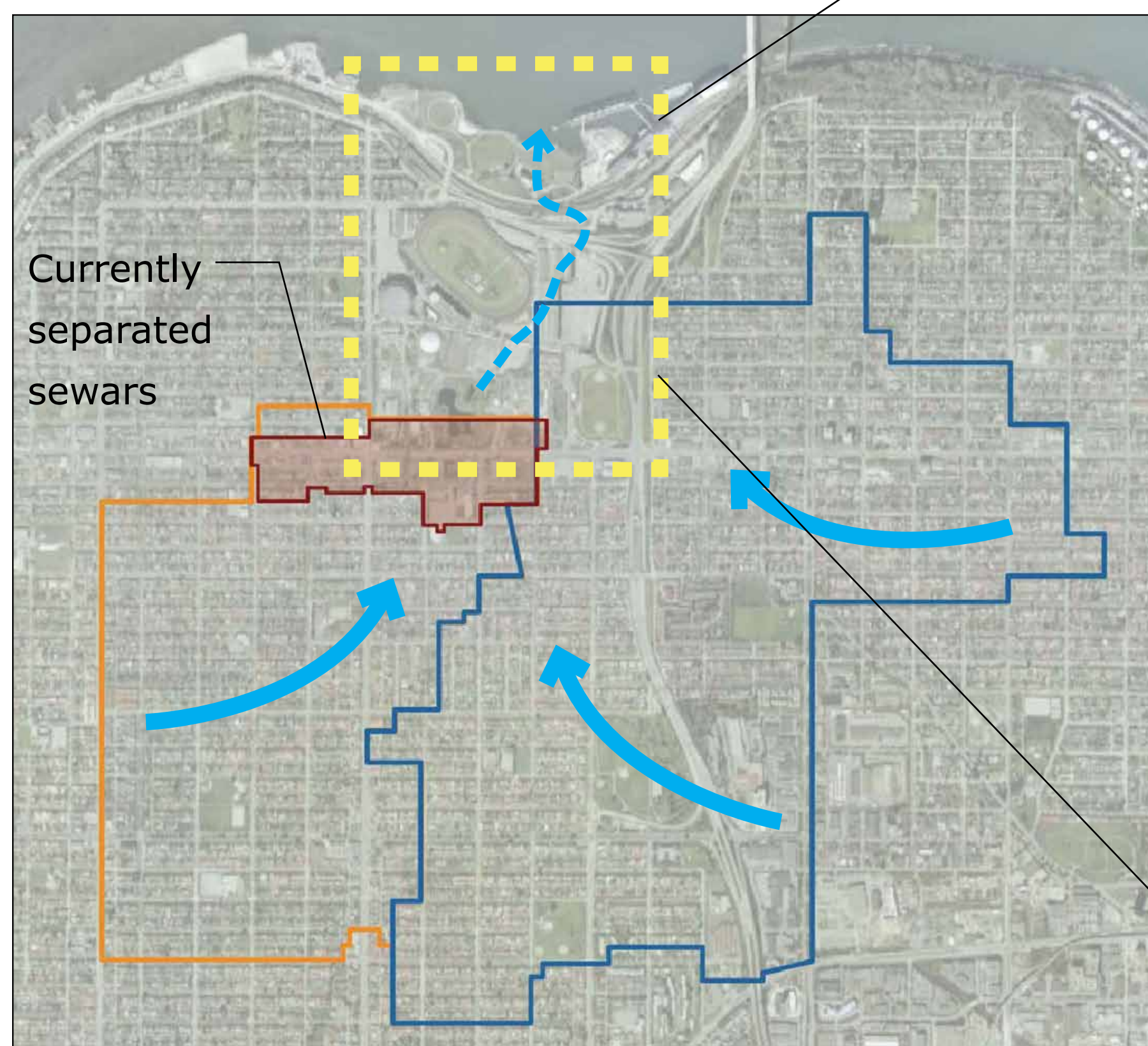
Historical Streams - Where did they go?

Historically, two streams ran through Hastings Park. In predevelopment times, the streams were fed by the upland watershed. Over the years, as the city evolved, this natural source of water has been intercepted by roads, roofs, and pavement and directed into pipes. The streams were completely erased as their ravines were filled in to provide additional land for development.

Reviving a lost stream?

The construction of the Sanctuary in 2000 was the first step in re-establishing a stream in Hastings Park. The 2010 Master Plan proposes to connect the Sanctuary to the Burrard Inlet with the construction of a daylighted stream within a wide habitat corridor.

The Larger Watershed



Where will the water come from?

- Stormwater run off from neighbourhood: The City of Vancouver has a program to separate combined sewers (sanitary + storm water). When the combined systems are separated, stormwater from neighbourhoods within the watershed will provide water to the Sanctuary and the daylighted stream.
- Quadra sands with aquifer may have the potential to supply water
- Stormwater runoff from Hastings Park: as Hastings Park transforms over the years, capturing and infiltrating stormwater will be integral to the design of new spaces. Captured stormwater will be used to feed the daylighted stream.

