

Start Here

What's being considered at this open house?

The City of Vancouver is currently undertaking a design and consultation process for new park spaces and greenways in Hastings Park and is interested in your ideas and thoughts. These projects are initial outcomes of the Hastings Park / PNE Master Plan process completed in 2010.

Why are we here today?

The purpose of today's open house is to get your thoughts and feedback on the initial ideas for Empire Field, the Plateau Sports Park, Creekway Park, the connection to New Brighton Park, and the park greenways.

As the projects move through design phases additional open houses are scheduled for 2012.

When will the changes happen?

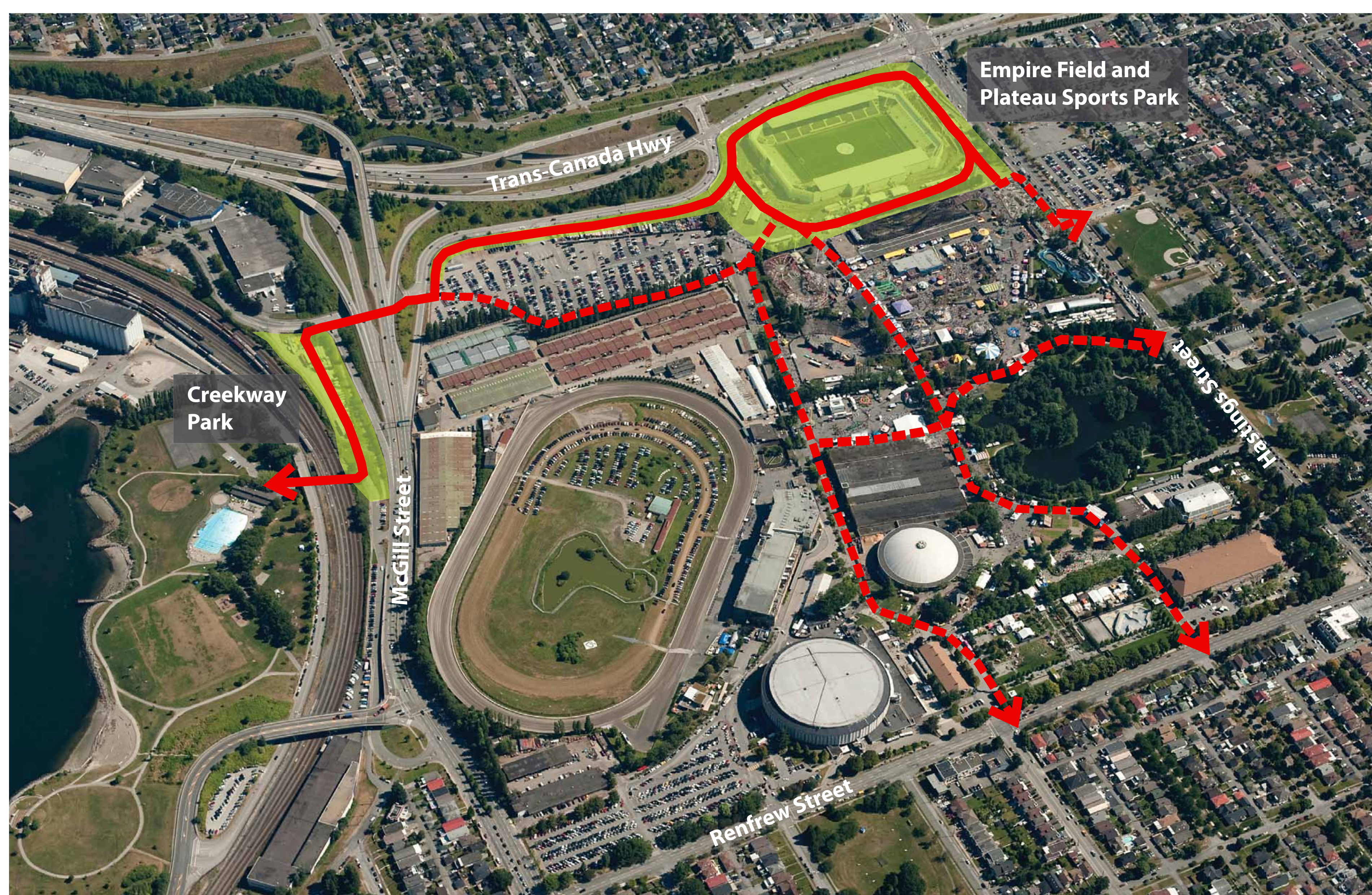
The timeline below lays out the project process that will span into 2012. As concepts for the new park spaces are refined, additional consultation sessions will be held to gather further feedback. It is anticipated that the park design work will be finalized in Spring 2012 and construction documents will be tender-ready by mid-2012, with construction to follow. Approximately \$8.5 million has been recommended to be included in the City's 2012-14 Capital Plan, subject to City Council approval in early 2012, for the implementation of the projects being considered at this open house.

Who's involved?

City of Vancouver staff are being assisted by a consultant team with expertise in park, recreation and greenway design and along with hydrologists, engineers and biologists with expertise in daylighted streams and habitat creation. The project receives advice from an Open Space Advisory Group comprised of individuals representing local and City-wide park, recreation and greenway interests. Technical working groups of City, Park Board, and PNE staff provide detailed technical input. The project is overseen by a Steering Committee comprised of senior Park Board, City and PNE staff.

Final results of this process will be reported out to Park Board and City Council.

City Staff are also consulting with Park Board Programmers, and organized sport groups (e.g. Vancouver Sports Network, Vancouver Field Sport Federation, and Urban Rec) to gather their input on potential uses and layouts for Empire Fields and the Plateau Sports Park.



Projects being considered at this open house:

- **Empire Field** - the removal of the temporary stadium and reinstatement of community use with synthetic turf field with lighting and a running path
- **Plateau Sports Park** - a new park space designed with a diversity of activities spaces for all ages and abilities
- **Connection to New Brighton** - Safe convenient at-grade pedestrian and bicycle connection from Hastings Park to New Brighton Park
- **Creekway Park** - a new park space designed as a habitat corridor with a daylighted stream
- **Greenways** - new separated trails for pedestrians and bicycles throughout Hastings Park connecting from the park to surrounding neighbourhoods and to New Brighton Park.

- Creekway Park, Empire Fields and the Plateau Sports Park
- Permanent Greenway
- - - Temporary Greenway