

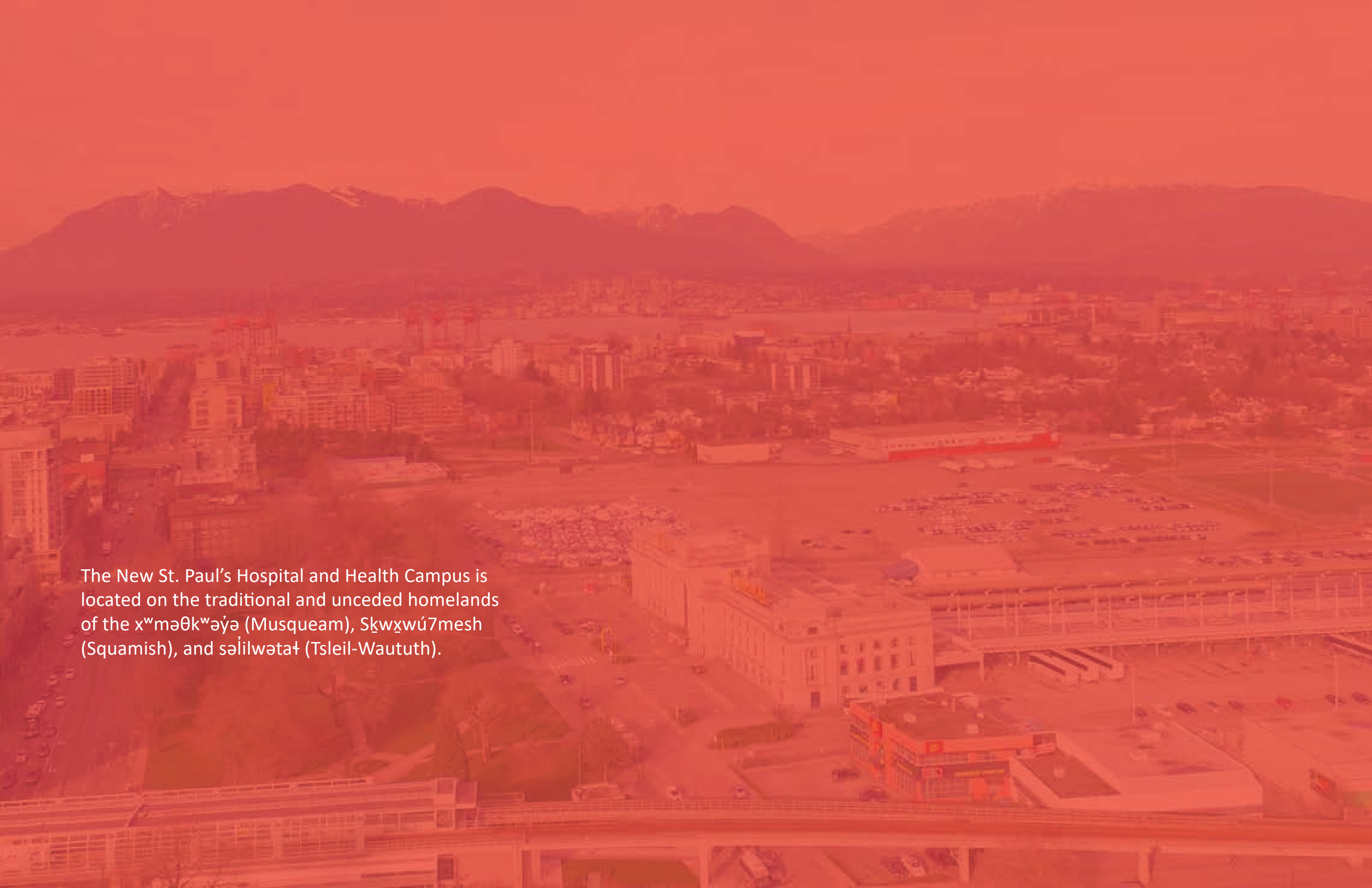


The New St. Paul's Hospital and Health Campus
Phase 1

Detailed Public Art Plan

December 2, 2021

BALLARD FINE ART
ART ADVISORY

An aerial photograph of Vancouver, British Columbia, Canada, showing the city's skyline, the harbor, and the surrounding mountains. The image is overlaid with a semi-transparent red filter. In the foreground, a large parking lot and some commercial buildings are visible. In the background, the city extends to the water, with mountains rising behind it.

The New St. Paul's Hospital and Health Campus is located on the traditional and unceded homelands of the xʷməθkʷə́yə (Musqueam), Skwxwú7mesh (Squamish), and sə́lilwətaɫ (Tsleil-Waututh).

Contents

Project Details	3	Master Site Plan	10	Precedent Images	25
Project Team	4	Public Realm	12	Public Art Budget	28
Public Art Vision	5	Community Context	14	Indigenous Consultation & Community Engagement	29
Site Context	6	Guiding Principles	15	Selection Process	30
Project Overview	7	Public Art Themes	16	Public Art Timeline	32
St. Paul's History & Background	8	Public Art Opportunities	17	References	33
Historical Context of the New St. Paul’s Hospital Site	9	Public Art Site Locations	18		

Project Details

Project Address
1002 Station Street and 250-310 Prior Street
Project Location
False Creek Flats
Legal Address
Lot 1 District Lot 2037 Group 1 New Westminster District Plan EPP105034

Phase 1 Eligible FSR Area for Public Art
184,531 m ²
Phase 1 Public Art Budget
\$3,932,356

Total Eligible FSR Area for Public Art
310,550 m ²
Total Public Art Budget
\$6,617,821

Project Team

Project Owner

Providence Health Care (PHC)
5th Floor, 1190 Hornby St
Vancouver, BC V6Z 2K5

Rhonda Lui | Associate Project Director, Design Build
604 980 5852
rhonda.lui@phsa.ca

Project Design-Builder

PCL Constructors Westcoast Inc.
13911 Wireless Way, Suite 310
Richmond, BC V6V 3B9

Jackie Trach | Construction Manager
jmtrach@pcl.com

Project Architect – Lead Core and Shell

Stantec
1100-111 Dunsmuir Street
Vancouver, BC V6B 6A3

Darren Burns | Vice President, Buildings
604 696 8009
darren.burns@stantec.com

Project Architect – Lead Consultant Overall and Clinical

HDR
500 – 1500 West Georgia Street
Vancouver, BC V6G 2Z6

Troy Ransdell | Vice President, Healthcare
604 622 5300
troy.ransdell@hdrinc.com

Project Landscape Architect

Connect Landscape Architecture
2305 Hemlock Street
Vancouver, BC V6H 2V1

Ken Larsson | Principal, Creative Director
604 681 3303
ken@connectla.ca

Public Art Consultant

Ballard Fine Art
2303 Kings Avenue
West Vancouver, BC V7V 2C3

Jan Ballard | Principal
604 922 6843
jan@ballardfineart.com

Indigenous Collaborator

To be determined

Public Art Vision

Public art plays a vital role in the health and wellbeing of individuals and communities by activating and transforming public spaces. Within a health care setting, engagement through the arts positively affects the psychological, social, and spiritual wellbeing of patients, their families, and health care providers and facilitates meaningful social connections.

As the cornerstone for health innovation in Vancouver’s False Creek Flats, the New St. Paul’s Hospital and Health Campus offers an unprecedented opportunity to thoughtfully integrate innovative and compelling public art at the intersection of art and wellness, Indigenous art and culture, social and community transformation, and sustainability and resiliency.

With close to 10,000 people expected to work at the New St. Paul’s Hospital and the broader health campus, and thousands of patients and their families visiting daily to receive integrated care, public art throughout the New St. Paul’s Hospital will foster social connection, dialogue, curiosity, and discovery among the hospital’s diverse visitors.

Respecting the territory in which the New St. Paul’s Hospital will be located and the role that contemporary art can play in the process of healing, planning for the Hospital’s public art program will be done in consultation with the xʷməθkʷəy̓ə (Musqueam), Skwxwú7mesh (Squamish), and səliłwətał (Tsleil-Waututh) First Nations to ensure an inclusive public art process, respectful attention to cultural protocols, and thoughtful sensitivity to the placement of public artwork on sovereign Indigenous lands. The public art program will further support the creation, promotion, and preservation of Indigenous art and culture, creating and facilitating opportunities for the meaningful integration of Indigenous artwork in the architectural fabric and public realm planned for the New St. Paul’s Hospital.

The Detailed Public Art Plan presents a conceptual framework to guide public art visioning and commissioning for the entire New St. Paul’s Hospital and Health Campus, with a focus on Phase 1. It is intended as a living document, providing a detailed approach as well as flexibility to adapt to feedback from the City of Vancouver and the Public Art Committee; insights and learnings garnered through consultation and engagement with the Musqueam, Squamish, and Tsleil-Waututh (MST) and broader community; and collaboration with the design team and Hospital user groups as the project continues to move through detailed design.



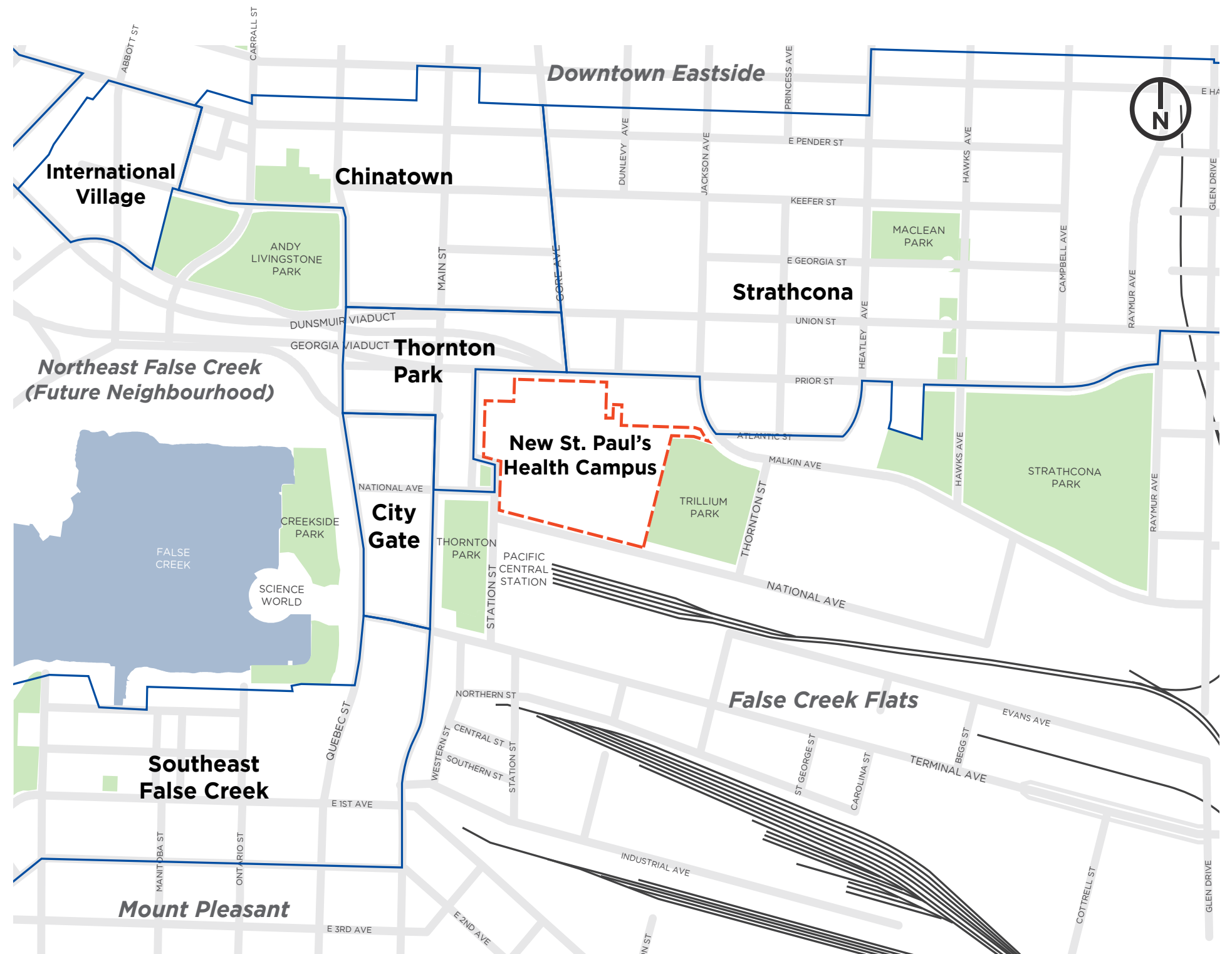
Images, clockwise from left: Musqueam welcome post. Marianne Nicolson, *The Land is a Person*, 2013, North Vancouver BC. Myfanwy MacLeod & Shannon Oksanen, *Playtime*, 2016, BC Children’s Hospital and BC Women’s Hospital and Health Centre, Vancouver BC. Jeppe Hein, *Modified Social Benches*, 2019, Venice, Italy.

Site Context

The site for the New St. Paul's Hospital and Health Campus is located along Station Street, between National Avenue and Prior Street and behind the Pacific Central Station in Vancouver's False Creek Flats.

The large, 7.4 hectare (18.3 acre) site is bordered by Station Street, National Avenue, Trillium Park, Malkin Avenue, and Prior Street.

The site is in a highly accessible location, near the Strathcona, Chinatown, Downtown Eastside, Thornton Park, City Gate and Southeast False Creek neighbourhoods, as well as the future Northeast False Creek neighbourhood.



Context map for the New St. Paul's Hospital and Health Campus

Project Overview

The New St. Paul’s Hospital and Health Campus presents a bold vision to develop a new hospital and health campus that will help transform the future of health care for patients, families, and communities in British Columbia. Designed with patients at the centre, the vision for a new, **integrated** model of health care is to provide patients with the highest quality, **innovative** and **patient-centred care** together with better coordinated health services, where and when they need them most.

Located on a 7.4 hectare (18.4-acre) site in the northwest corner of Vancouver’s False Creek Flats on Station Street, 3km from the current Burrard Street hospital site, the New St. Paul’s Hospital will be part of a brand-new complex devoted entirely to health care, life sciences, research, technology, and innovation. St. Paul’s Hospital will continue its 125-year tradition as a full-service, acute-care hospital and integrated health campus, providing general and specialized health care services to local communities and patients from across BC. The hospital will have 548 beds, which includes 115 net new beds, and will be home to several leading provincial programs and referral centres, including those for heart and lung care, renal, eating disorders, and specialty surgeries and transplants.

The hospital will also offer a diverse and long list of general and specialized care, including HIV/AIDS, chronic disease management services, emergency and critical care, mental health and addictions beds and programs, ambulatory services and outpatient clinics, end-of-life care, Indigenous health, maternity, colorectal and gastrointestinal services, and community care and outreach programs. At its core, St. Paul’s Hospital will continue to be a research and teaching hospital, leading advancements in health care that not only improve the lives of people in BC, but also set the standard for best practices around the world.

Design elements that will improve patient experience and optimize wellness include access to natural light and views; single patient rooms with space for family and support persons to stay overnight, minimizing infections



View towards the Main Entrance of the New St. Paul’s Hospital from the Civic Plaza

and maximizing privacy; a campus layout that is friendly for seniors; new technologies and state-of-the-art spaces, including digital wayfinding to allow easy navigation around the campus, automated patient check-ins, and online patient scheduling; outdoor and other spaces for wellness & rejuvenation; inclusive sacred spaces, including an All Nations Sacred Space, therapy roof gardens, and a chapel; and public art that incorporates Indigenous and broader perspectives into the campus design and optimizes its public spaces, contributing to the promotion of health, wellness, and education on the site’s historical, social, and cultural contexts.

Future other development phases at the New St. Paul’s Hospital and Health Campus are planned to include an Indigenous Wellness Centre; a hotel to accommodate family stays; and mixed-use commercial and residential rental development. Overall, the health campus will focus on sustainability, resiliency, and accessibility. New walking and cycling paths as well as easily-accessible transit options will connect the campus to the rest of the community, the City, and the entire province, facilitating accessibility and connectivity throughout the site and beyond.

St. Paul's Hospital History & Background

Providence Health Care — A tradition of compassion for 125 years

St. Paul's Hospital's story of innovation began more than a century ago when the Sisters of Providence arrived in Vancouver. Drawn to Vancouver by stories of suffering in the burgeoning coastal city, the Sisters listened to the community and made a plan to meet the needs expressed by the people. In 1894, they founded St. Paul's Hospital, a 25-bed "cottage" on the path to English Bay and the first hospital to provide medical care to the 14,000 people living in the growing town of Vancouver.

Today, Providence Health Care is one of Canada's largest faith-based health care organizations, operating 17 health care facilities in the Lower Mainland, including St. Paul's Hospital. Providence specializes in delivering hospital, residential and outpatient services to serve some of the following key areas: heart & lung risks and illness, specialized needs in aging, kidney risks and illness, HIV/AIDS, mental health and substance use and urban health.



Gerald McGeer in hospital bed at St. Paul's Hospital, with two nurses at bedside (1946).
City of Vancouver Archives, AM1616-S1-: CVA 136-255.

St. Paul's Hospital — A global leader in treating the most complex health care needs

Six decades after it was founded, St. Paul's Hospital performed its first open heart surgery, and in 1975, performed the first mammogram in western Canada. In the 1980s, when fear of HIV/AIDS was rampant, St. Paul's Hospital was the first, and some say the only, hospital to open its doors to a rejected and desperately ill group of people.

St. Paul's Hospital became home to the provincial heart centre in 1994—the provincial referral centre for B.C.'s most complex cardiac cases. It is the only hospital to perform adult heart transplants and is a recognized leader in cardiac obstetrics, heart rhythm services and heart valve procedures.

In 2007, Providence introduced the Heart + Lung Institute, which merges and integrates heart and lung research, education and care programs under one umbrella at St. Paul's Hospital. In 2014, the BC Centre for Excellence in HIV/AIDS (located at St. Paul's Hospital) was credited for the Treatment as Prevention strategy that now serves as the cornerstone of the United Nation's plan to end HIV/AIDS globally. Together with HIV/AIDS treatment protocols also pioneered by the Centre for Excellence, Treatment as Prevention accounts for a 95% decrease in AIDS-related deaths in the province.

Today, St. Paul's Hospital continues its 125-year tradition of providing compassionate care to people who need it most, focusing on the urgent and complex health needs of the community. The Hospital's commitment to patient- and family-centred care focuses on new knowledge and technology to support patients.

St. Paul's Hospital — An essential provincial resource

St. Paul's Hospital serves both the local (Vancouver/Lower Mainland) and provincial population, providing non-specialized services primarily to the local population and specialized services to the entire province.

As one of two adult academic health sciences organizations in the province with affiliations with UBC and other B.C. post-secondary institutes, St. Paul's Hospital is a renowned acute care hospital with a strong research and teaching focus, recognized provincially, nationally and internationally for its work.



The exterior of St. Paul's Hospital (1940). City of Vancouver Archives, AM54-S4-: Bu P701

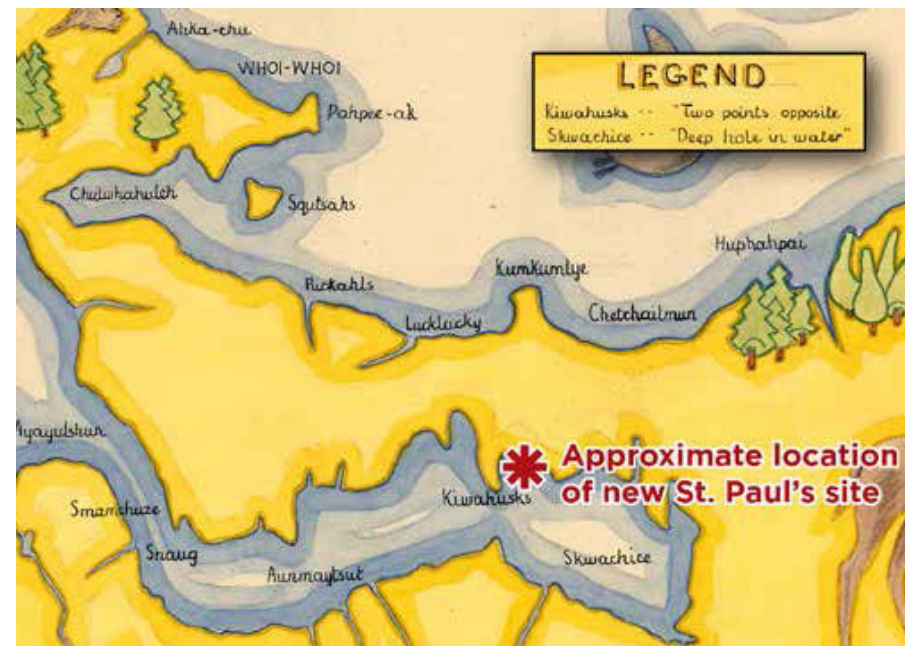
Historical Context of the New St. Paul's Hospital Site

The Station Street site was once part of the tidal flats at the end of False Creek. **First Nations villages were located along the historic shoreline, and each of the local First Nations—Musqueam, Squamish, and Tsleil-Waututh—have names and stories about the area.**

When European settlers first arrived at the Burrard Inlet in the late 1850s, False Creek was five times the present size and included a large tidal mud flat, an ecologically rich area abundant with shellfish and essential in the salmon lifecycle, providing the ideal conditions for the rearing of young salmonids. Archeological evidence and oral traditions record the First Nations use of the False Creek area for over 3000 years. As urbanization grew with increased European settlement and the arrival of the CPR railway in 1887, Indigenous peoples who stewarded these lands since time immemorial were moved to reserves in less desirable areas of Vancouver. By 1870, only forty-four Indigenous people would be recorded as living in the original habitat surrounding False Creek.

In 1913, to accommodate demand for industrial land, the City of Vancouver approved a plan to fill the tidal flats to support rail yards and other industrial uses. Two train terminals were built in the area—the Great Northern Station (formerly located on the Station Street site) and the Canadian Northern Railway Station (still in operation as Pacific Central Station). Between WWI and WWII, these stations were a major focus of transportation to and from Vancouver. With reduced demand for rail travel and shipping after WWII, the Great Northern Railway Station ceased operating and was eventually demolished in 1965.

In the late 1960s, a new freeway plan was proposed to connect Vancouver more directly to the Trans-Canada Highway to the east and west, and to Highway 99/I-5 to the south. The freeway plan was opposed by residents and ultimately abandoned, but not before Hogan's Alley (immediately north of the Station Street site) was demolished to make way for the Georgia and Dunsmuir viaducts.



Illustrative map showing Indigenous place names by Mary Jessiman, 1936. City of Vancouver Archives. AM1594-: MAP 51



Panoramic view of the City of Vancouver, British Columbia, 1898. City of Vancouver Archives. AM1594-: MAP 547



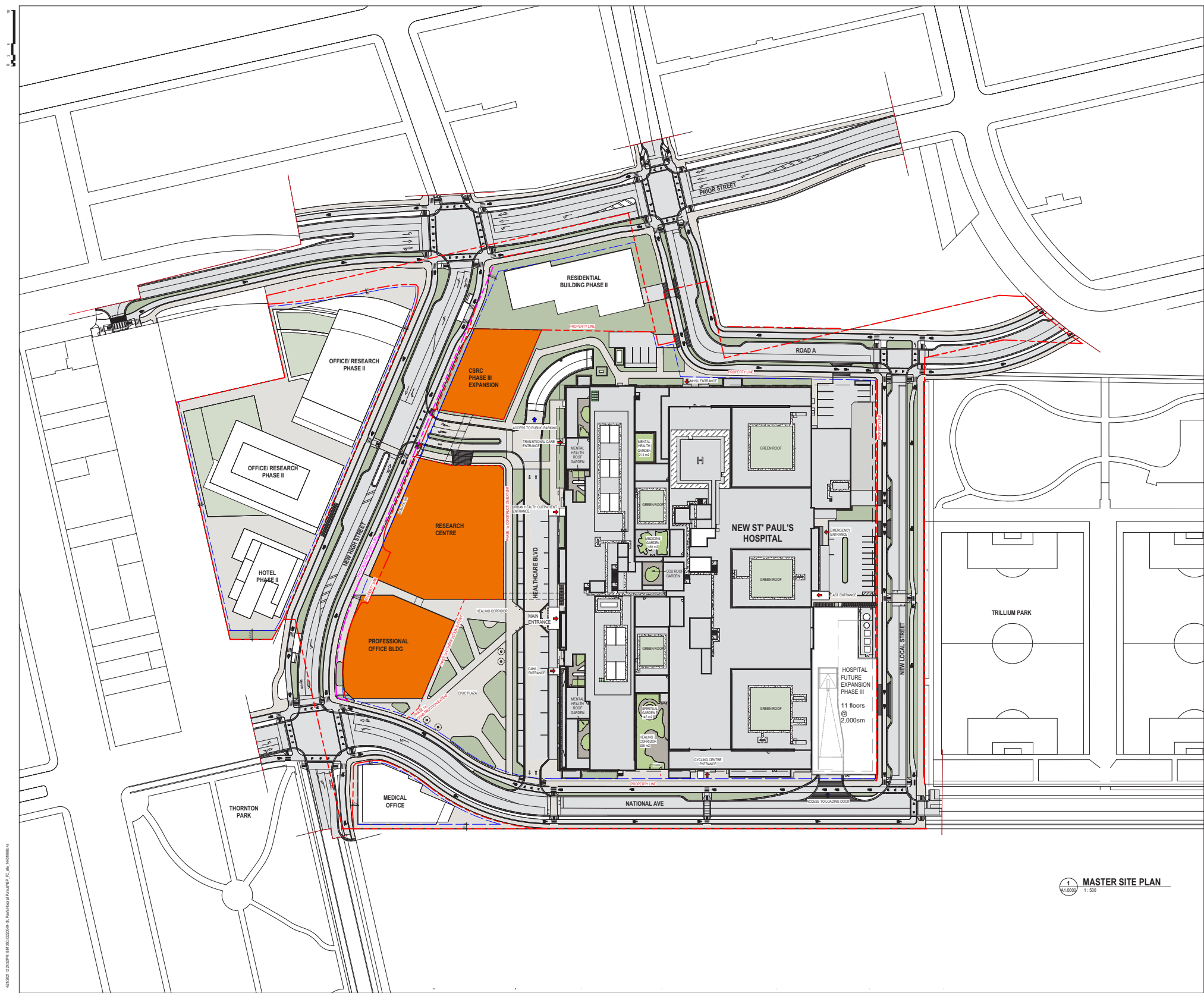
Great Northern Station (left) and Pacific Central Station (right), c. 1919-1925. "Union Station and Canadian National Railways Station," Albertype Company/Library and Archives Canada.



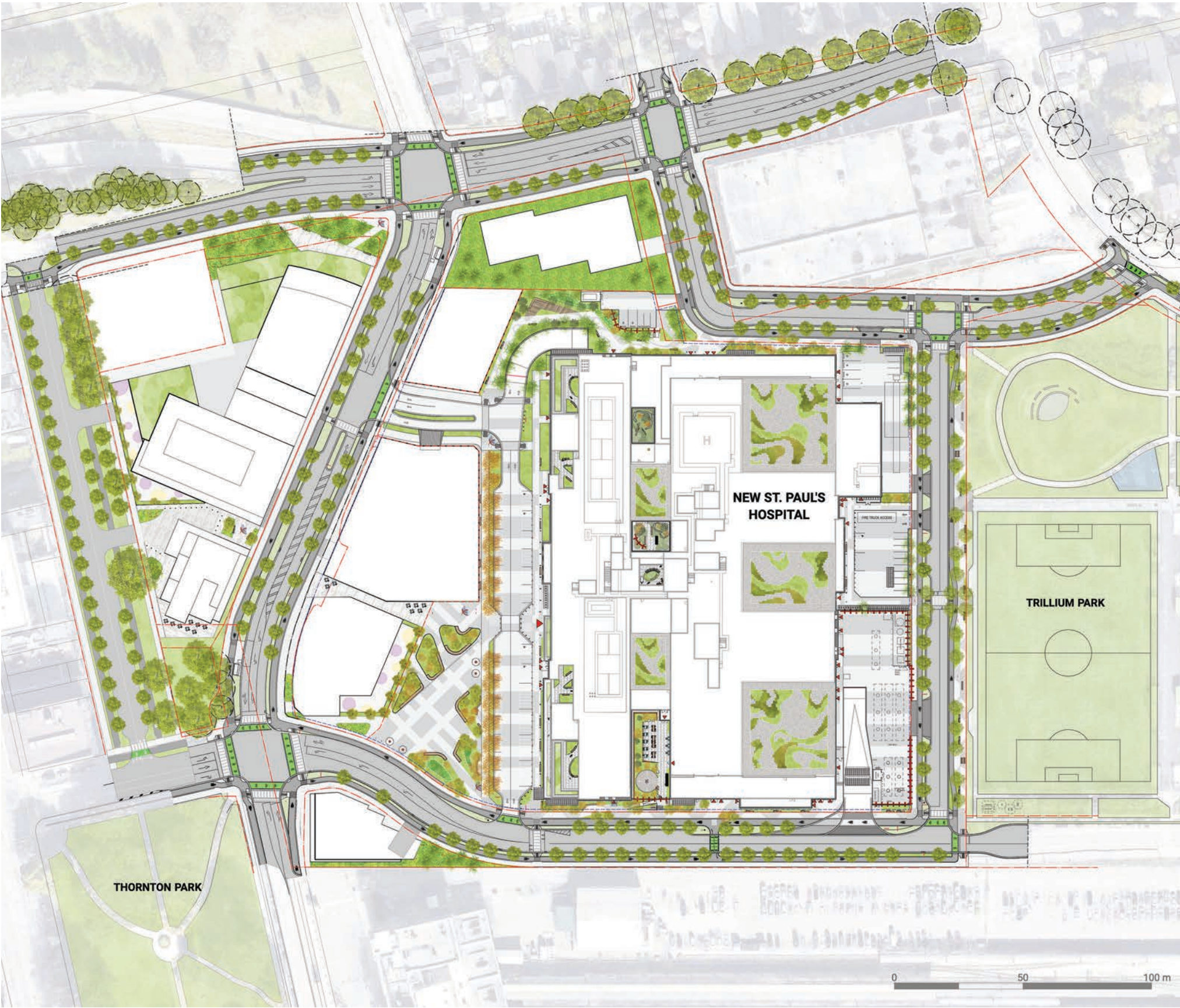
Shoreline area of False Creek Flats, c. 1904. City of Vancouver Archives. AM54-S4-: SGN 1116

Master Site Plan

- Phase 1 – Hospital & Health Campus Parcel Office Buildings
 - Phase 1A – Core Hospital development of the Acute Care Centre and Outpatient Care Centre; and Site Infrastructure (on-site and off-site)
 - Phase 1B – Clinical Support and Research Centre
- Phase 2 – North, West, and South Parcels
- Phase 3 – Health Campus Expansion



Master Site Plan

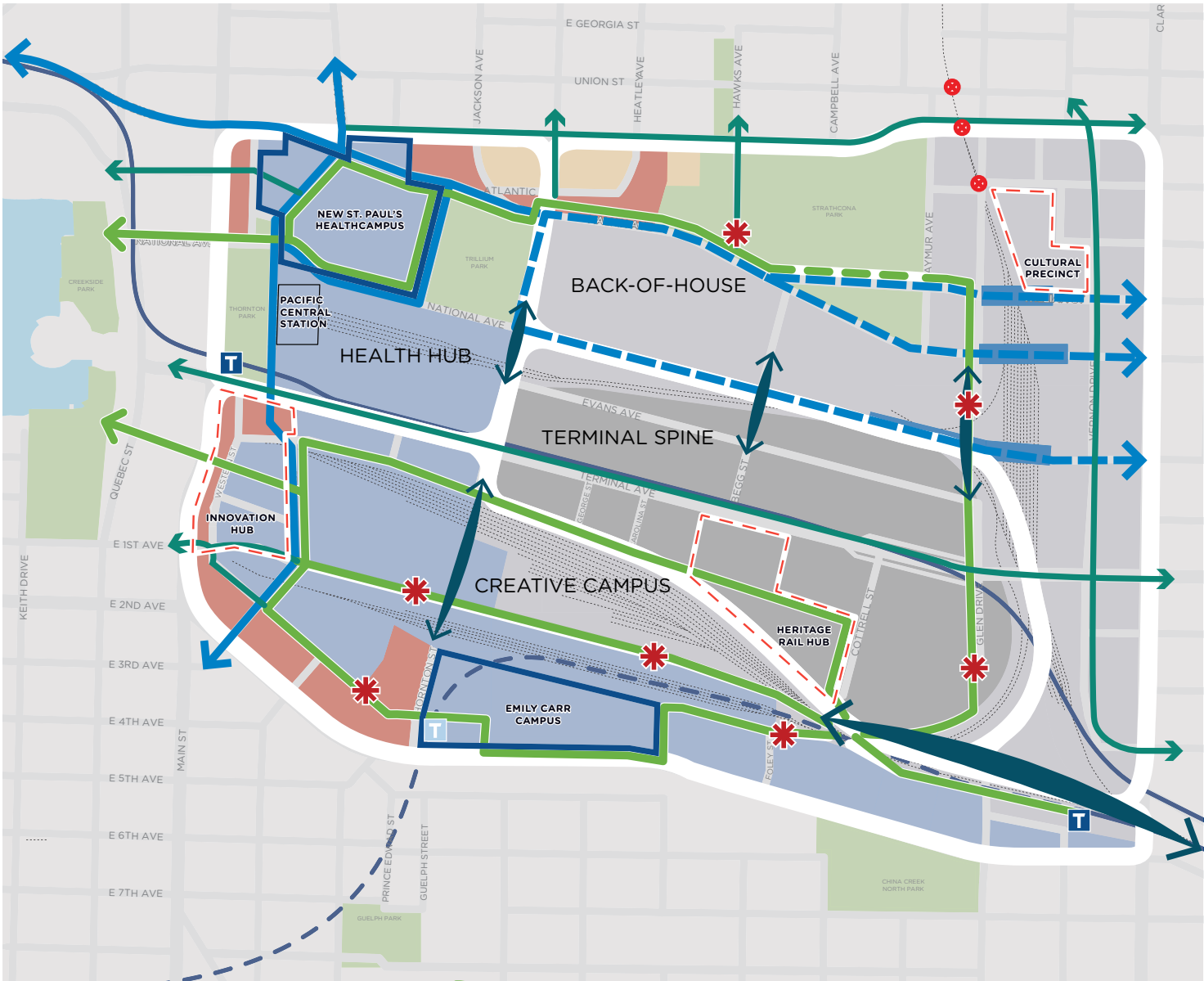


Public Realm

Situated along Station Street—between National Avenue and Prior Street, behind the Pacific Central Station, and immediately adjacent to Trillium Park—the New St. Paul’s Hospital and Health Campus is centrally located to serve patients in communities in Vancouver and across BC. It is located along the western edge of the False Creek Flats area, which has a robust City of Vancouver plan for future development and transformation as well as a character and fabric that presents tremendous potential to establish a unique, interesting place and thriving economic district within the City.

As an innovative centre for health-related services and research, the New St. Paul’s Hospital anchors the Health Hub sub-area of the False Creek Flats Area Plan, which together with the Emily Carr University of Art & Design (ECUAD) in the Creative Campus sub-area on the southern edge, will support and unlock an innovation economy in close proximity to transit. The site is at the nexus of major transportation arteries, close to key public transit connections such as SkyTrain and several bus routes, next to bike routes, and adjacent to the Pacific Central Station, which connects to several train and inter-city and cross-border bus routes.

Significantly, the site is part of the transportation and open space plans for the False Creek Flats, including an emerging concept called Walk-the-Line, an interconnected walking and cycling route that extends the experience of the False Creek seawall eastward in a loop that generally references the historic shoreline and existing rail-lines, to overcome the area’s barriers and connect the various amenity hubs and places of interest throughout the Flats into a cohesive whole. The New St. Paul’s Hospital and Health Campus will provide a Wellness Walk through the site with open spaces along the way to sit and rest, connecting the adjacent Trillium Park with Thornton Park and beyond to places of interest in adjacent neighbourhoods.



FALSE CREEK FLATS STRUCTURE PLAN

LEGEND

- East-West arterial overpass 3 options TBD
- New street linkages
- Existing Transit station/skytrain line
- Future transit station/skytrain line
- Street closure at rail crossing
- Walking and Cycling Improvements
 - New walking/ cycling bridges
 - Walk the Line
 - Route TBD in consultation with the Park Board
 - Proposed walking/cycling routes
- Amenity node
- Institutional anchors
- Public node
- Residential
- Mixed use with residential

Employment Areas

- Innovation, Technology, Creative, Research, Industrial
- Industrial, Production, Distribution, Service, Art
- Industrial, Commercial, Creative Manufacturing

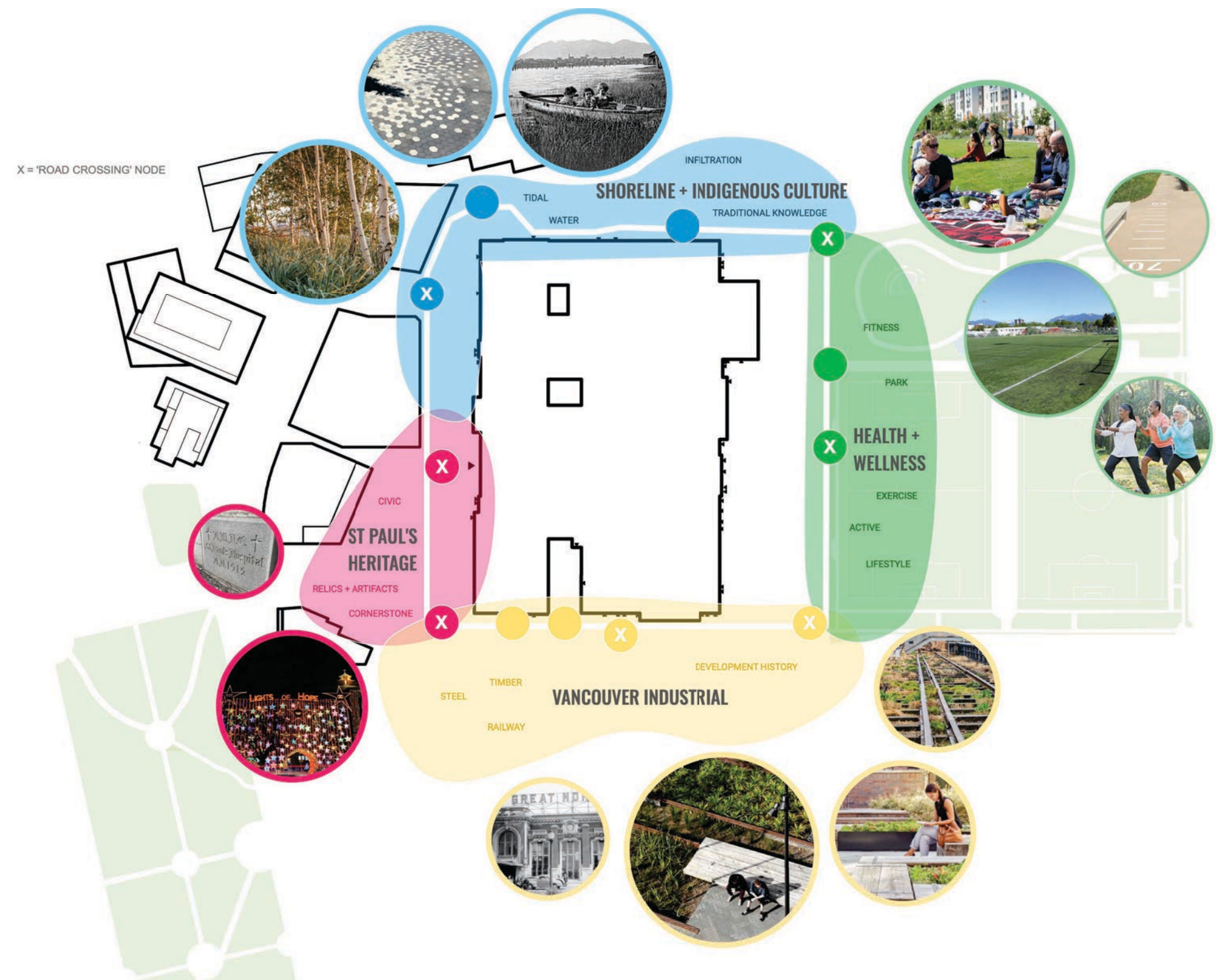
Opposite: Structure Plan from the *False Creek Flats Area Plan* (2017) showing the framework for the overall area plan, including the four sub-areas—the Health Hub, Creative Campus, Terminal Spine, and Industrial Back-of-House—as well as the proposed route for the Walk-the-Line

Extending 800 linear metres, the Wellness Walk will meander throughout the site to provide delight and interest and connect and integrate with the adjacent context, highlighting the historic shoreline and connecting to the Walk-the-Line. The Wellness Walk concept is comprised of four thematic zones, each with various nodes and connection points:

- Shoreline + Indigenous Culture
- Health + Wellness
- Vancouver Industrial
- St. Paul’s Heritage

One of the central nodes includes the Civic Plaza at the southwest corner, opening up towards National Street with views towards the North Shore Mountains. Oriented towards the Main Entrance, the Civic Plaza offers clear pedestrian access to the hospital entrance as well as connection through the health campus, facilitating wayfinding and providing a welcoming sense of arrival. With significant trees, landscaping, paths, and street furniture, it will both facilitate movement and accommodate space for gathering and relaxation, enhancing the pedestrian experience. Planned programming for the Civic Plaza includes open air markets, the annual Lights of Hope, and other community events.

The Wellness Walk also connects to the Healing Corridor and Spiritual Garden, a public outdoor area comprised of an eating area with seating, plantings, rockwork, public art, and a labyrinth-inspired spiritual garden. Promoting wellness, connections to the natural environment, and social interaction through a health-centred approach to open space design, the myriad of public open spaces and walking paths planned for the New St. Paul’s Hospital and Health Campus also provide meaningful opportunities for integrating public art. Contributing to this open space network, public art throughout the campus will facilitate placemaking, wayfinding, and social connectivity, supporting lively moments of activity as well as quiet, intimate interludes with opportunities for rest and reflection.



Opposite: Wellness Walk concept illustrating the physical walking path around the perimeter of the health campus parcel, various nodes and connection points along the route, as well as the four thematic zones

Community Context

The New St. Paul’s Hospital and Health Campus is sited within a diverse range of historical and contemporary cultural communities, providing an opportunity to recognize the deep histories, traditional homelands, and contemporary presence of the three Host Nations of Musqueam, Squamish, and Tsleil-Waututh and celebrate the area’s cultural significance. The site was once a muddy tidal flat on the eastern shores of False Creek, a rich ecological inland waterway and abundant source of food, safety, and sustenance for the Musqueam, Squamish, and Tsleil-Waututh peoples who have lived throughout this region for thousands of years. Each Nation had its own relationship to the area, including place names and uses for the lands, waterways, and resources reflected in their oral histories. Important places of memory include Skwahchays “the Hole in Bottom” (near the southeastern corner of the False Creek Flats) and Khiwah’esks “Separated Points” (located along Main Street), among others.

The site also abuts areas of historical and contemporary significance to several other cultural communities, including Hogan’s Alley, once the heart of Vancouver’s Black Community displaced during the construction of the Georgia and Dunsmuir Viaducts, as well as the Chinese-Canadian Community and the City’s largest Urban Indigenous population in the nearby Chinatown, Strathcona, and Downtown Eastside neighbourhoods.

Over the last two centuries, the False Creek Flats has experienced dramatic alterations to its landscape and function, becoming an industrial area defined by rail transportation and commerce. Today, the area has a thriving cultural economy, with nearly one in five businesses in the Flats identifying as being a part of the arts and cultural sector. It also contains some of Vancouver’s most important art presentation and studio production spaces, with 25% of the City’s artists and cultural workers living in the surrounding neighbourhoods of downtown, Strathcona, and Mount Pleasant.

Situated within this culturally diverse and connected area of Vancouver, the New St. Paul’s Hospital is nearby several non-profit arts organizations, artist-run centres, and art galleries that encourage accessibility, dialogue, and engagement with creative practices, including the Burrard Arts Foundation (BAF), Access Gallery, Centre A, Or Gallery, and grunt gallery, among others. It is also situated in relation to the Emily Carr University of Art and Design (ECUAD) and Centre for Digital Media (CDM) in the neighbouring Creative Campus sub-area on the southern edge of the Flats, facilitating broader connections within a creative and innovation economy.

Public art plays an integral role in this vibrant community, arts, and cultural context, cultivating a rich and distinctive sense of place, celebrating cultural diversity and equity, and creating vibrant public spaces for social connection.



Already home to hundreds of artists ranging in scale from painting and photography to large-scale set design and public art creation, **the Flats is alive with creativity** and the back-of-house spine of our city’s cultural economy. Arts production, theatre, dance, opera, new media, set production, festivals, film, design, exhibitions, galleries, special events—are all happening here.

— The Flats Area Profile (2017)



Images, clockwise from left: All Nations Canoe Gathering at False Creek, Reconciliation Week, 2013. grunt gallery. Millenium Gate in Chinatown. Members of Hogan's Alley Society in front of Ejiwa "Edge" Ebenebe's *Remember Hogan's Alley* (2019) at Nora Hendrix Place (Photo: Vincent L. Chan). Access Gallery. Main entrance to the new Emily Carr University of Art and Design. Parker Street Studios.

Guiding Principles

Providence Health Care's Values:

Spirituality, Integrity, Stewardship, Trust, Excellence, and Respect (S-I-S-T-E-R)

- Reflect the vision, core values, and spirit of the New St. Paul's Hospital and Health Campus
- Honour the St. Paul's Hospital and Providence Health Care's heritage and legacy
- Reflect Providence Health Care's mission of service to all, its inclusive Catholic identity, and its commitment to reconciliation and Indigenous wellness



- Acknowledge the New St. Paul's Hospital and Health Campus' presence on traditional, unceded Musqueam, Squamish, and Tsleil-Waututh territory in ways that respect local Indigenous cultural protocols and further the process of reconciliation
- Promote Indigenous art, culture, awareness, and understanding
- Create welcoming, accessible, inclusive, culturally safe, and compassionate places for collaboration between patients, families, staff, and the broader public
- Facilitate innovation
- Foster social connection, dialogue, curiosity, and discovery
- Facilitate healing and contribute to the wellbeing of patients and hospital visitors
- Thoughtfully consider the unique historical, social, and cultural context of the False Creek Flats and adjacent communities

- Facilitate meaningful cultural recognition through integrated public art opportunities, including incorporating Indigenous artwork and design characteristics throughout the building exterior and public realm design
- Consider the cultural importance of the beaver for Host Nations when thinking about the site location of the New St. Paul's Hospital and Health Campus within False Creek Flats and deep connections to place



Musqueam Knowledge Keeper Sulksun (Shane Pointe) at the Ceremonial Blessing for the New St. Paul's Hospital and Indigenous Wellness and Welcoming Centre

- Support "Reconciliation & Decolonization," one of the five key strategic directions identified in the City of Vancouver's 2019-2029 Culture Plan, *Culture|Shift: Blanketing the City in Arts and Culture*, by prioritizing and facilitating public artworks that reflect Indigenous cultural presence, knowledge, and visibility in ways that are sensitive to their placement on unceded Musqueam, Squamish, and Tsleil-Waututh lands
- Celebrate, support, and enhance arts and culture in the False Creek Flats, recognizing the critical role these sectors play in healthy and complete communities
- Support artists and the communities with which they engage to take on active roles in shaping the public spaces of the New St. Paul's Hospital and Health Campus
- Offer high public visibility and accessibility for a diverse array of audiences
- Encourage various forms of contemporary public art in new and traditional media
- Support the City of Vancouver's Public Art Program and its mission to produce high-quality public art that enriches the City's urban environment

As Musqueam Speaker and Knowledge Keeper, Sulksun (Shane Pointe), performed the blessing ceremony for the New St. Paul's Hospital and Indigenous Wellness and Welcoming Centre in Summer 2021, he spoke about the importance of the beaver, which appeared to him and wouldn't leave his mind:

"He realized that beavers are one of the few beings that actually change geography and ecosystems. Beavers are builders. They redevelop land to build strong homes and safe structures. That's when he understood the land will come full circle, back to a place of healing and safety for self-identified Indigenous Peoples and their families when the new St. Paul's Hospital opens in 2027. (He also encouraged us, in all of our artwork for the new hospital, to use beavers as much as possible!)"

— "Ceremonial Blessing for the new St. Paul's Hospital and Indigenous Wellness and Welcoming Centre," Project Updates, The New St. Paul's Hospital & Health Campus, August 9, 2021.

Public Art Themes

The unprecedented opportunity for public art at the intersection of health, wellness, Indigenous art and culture, community transformation, sustainability, and resiliency offered by the New St. Paul’s Hospital and Health Campus offers a rich thematic framework to consider for public art. The site’s location within the intersecting and diverse cultural communities comprised of Musqueam, Squamish, and Tsleil-Waututh, Urban Indigenous populations, Hogan’s Alley, and the nearby Chinatown, Strathcona, and Downtown Eastside neighbourhoods provides further opportunities to celebrate the area’s unique cultural significance and encourage meaningful connections between cultures, histories, and identities.

Broad thematic that may be explored by artists:

- Art & Healing
- Spirituality
- Reconciliation
- Indigenous History & Culture
- ‘Beaver’ Art
- Ecology
- Sustainability
- Climate Change
- Traditional Forms of Medicine
- Wellness
- Research, Education & Learning
- History of St. Paul’s Hospital
- Diversity, Inclusivity & Accessibility

Based on input from the Vancouver Public Art Community as well as through initial community engagement, these potential thematic are a starting point. Additional public art themes and core values will be further developed through the process of in-depth engagement with diverse local communities, offering cohesion and connection throughout the public artworks imagined for the site.

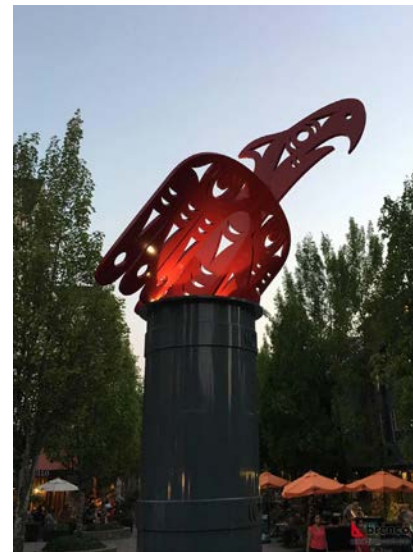
Public Art Opportunities

Public art at the New St. Paul's Hospital and Health Campus will reflect and serve the diverse communities in the area as well as visitors from across BC, encouraging connections between cultures, histories, and identities. **Unprecedented in scope and scale**, the New St. Paul's Hospital offers a myriad of opportunities for engaging public art that will active the public realm and foster **health and wellness, community, and connectivity**, which will be underpinned by thoughtful curatorial cohesion and a **celebration of place**.

In recognition of the First Nations on whose territories the New St. Paul's Hospital and Health Campus project is located, several of the public art opportunities planned for the site are intended specifically for artwork by Indigenous artists. These opportunities include a series of Welcome Posts as well as artworks integrated with the building façade and landscape design, providing meaningful opportunities to incorporate Musqueam, Squamish, and Tsleil-Waututh weaving and pattern designs into the architectural fabric of the Hospital and its public realm.

Several potential public art site locations have been identified to offer maximum public visibility, accessibility, and engagement opportunities for a diverse array of multicultural and multi-generational audiences, including patients, visitors, health care practitioners, workers, pedestrians, cyclists, and motorists. Together, they will provide a diverse yet cohesive collection of public artworks for the New St. Paul's Hospital and Health Campus and support the vision for the Wellness Walk, creating a distinctive public art presence throughout the campus as well as within the Health Hub, False Creek Flats, and surrounding Vancouver neighbourhoods more broadly.

Artists will be invited to address the relationships between art, wellness, publics, and urban spaces in the research and presentation of innovative, engaging artworks of different forms, media, approaches, and scales developed specifically for the site and its context.



Images, from top:
Jody Broomfield, *Thunderbird*, 2018. Fairmont Chateau, Whistler, BC. Youth Mentorship Program welcoming ceremony for "xawš shewáy New Growth," led by T'uy't'ananat-Cease Wyss, July 6, 2019, 221A, Vancouver BC. Claudia Comte, *The Italian Bunnies*, 2016, New York NY. Kevin Schmidt, *Reckless*, 2018-2019, Polygon Gallery, North Vancouver BC.



Landmark Sculpture

- 3D sculptural form, often of a larger scale
- Includes gateway artwork
- High visibility and accessibility
- Contributes wayfinding and placemaking
- Anchor of the development
- Provides a sense of arrival, welcoming visitors to the site
- May include Welcome Posts to honour and acknowledge the traditional First Nation territories
- Fosters a unique identity and sense of place
- Capacity to have lasting significance

Integrated & Functional Artwork

- Integrated with architectural, landscape, and public realm design
- Includes building façades, ground plane, seating, lighting, planters, and other innovative forms
- Variety of forms, materials, and scales
- Promotes connectivity and social interaction throughout the site
- Becomes woven into the architectural fabric and identity of the site
- Provides opportunities for artists to collaborate with design team
- Can provide intimate moments of encounter as well as high visibility
- Expanded sight lines
- Contributes wayfinding and placemaking

Humanscale Sculpture

- Series or sequence of related artworks of a human scale
- May include a wide range of materials and forms, including light
- Pedestrian-friendly, encourages walkability
- Fosters interest
- Provides wayfinding and a sense of discovery
- Contributes to cultural vibrancy
- Provides moments for rest, respite, and reflection

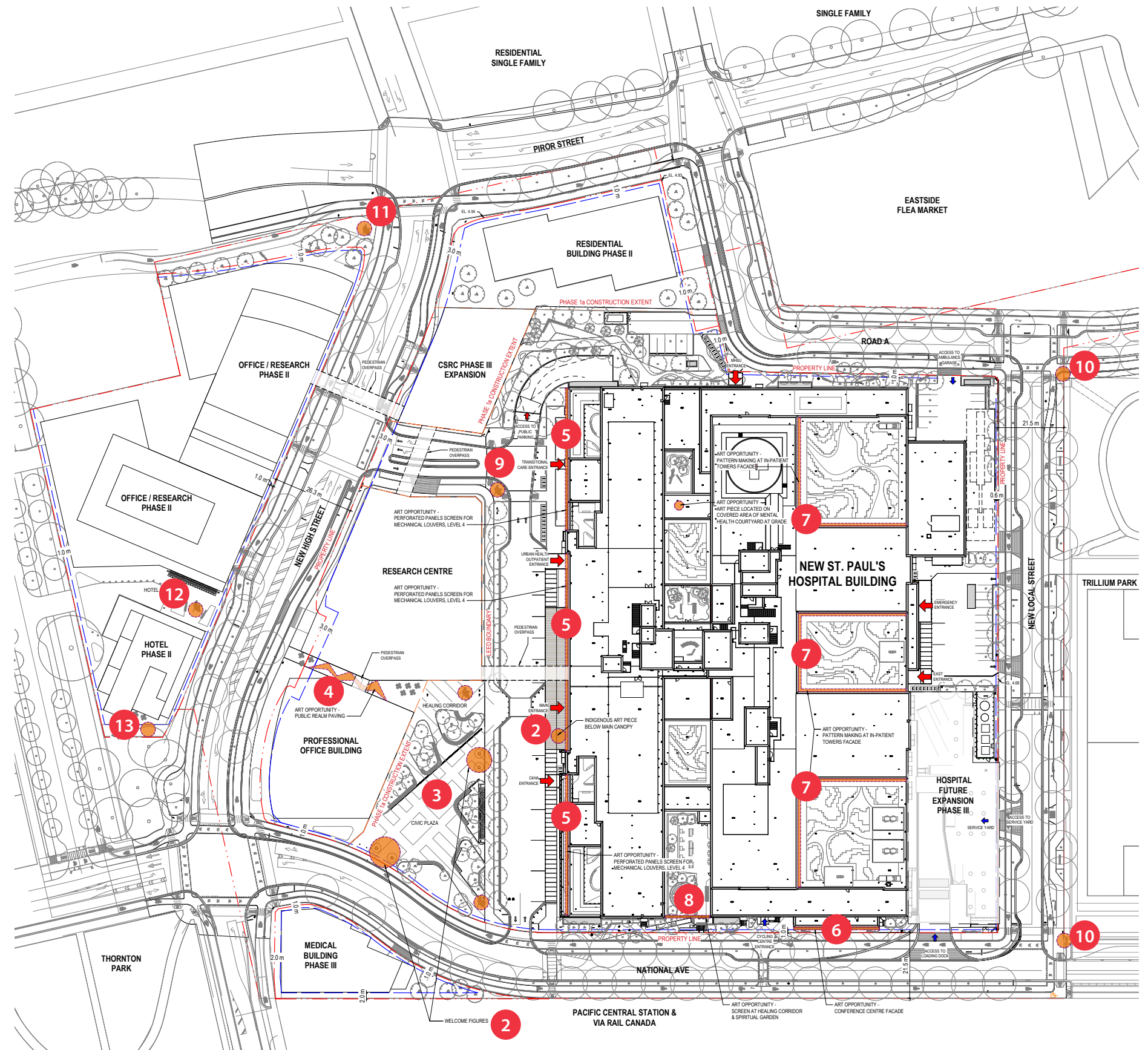
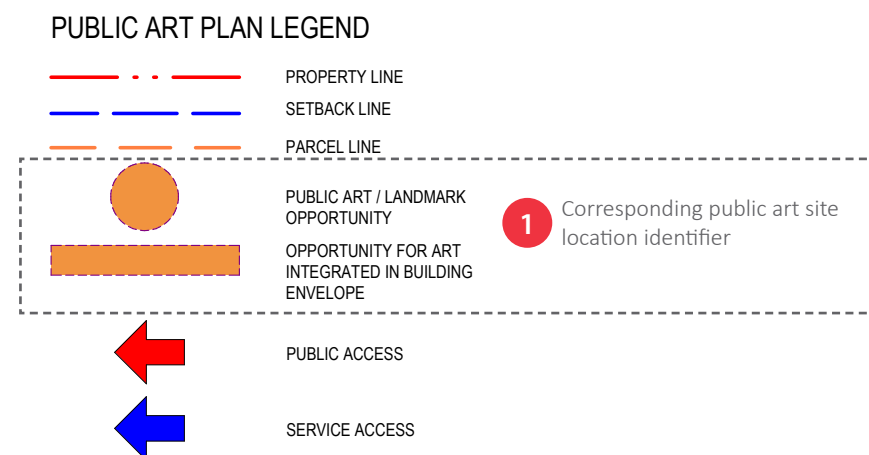
Temporary Projects & Program-Based Artwork

- Public art projects of different durations, scales, and forms
- Potential to participate in design sessions for the healing gardens and Indigenous plantings
- May be process-based, change over time, or be gestural in nature
- May include natural materials or environmental art forms
- Intended to support Hospital operations and programming for the site, such as gatherings and open air markets in the Civic Plaza
- Socially-engaged, community-based, and participatory
- Facilitates connections to the land and a strong sense of place
- Opportunities for sharing of local cultural knowledge
- Provides learning and relationship-building opportunities
- Fosters dialogue and encourages interaction
- Can be related to or culminate in permanent works

Public Art Site Locations

Following initial meetings and public art visioning sessions with the design team, several potential locations for public art have been identified. These locations represent the breadth of possible public art opportunities for sculptural, integrated, and temporary or program-based artworks throughout the site. Not all public art opportunities will be possible to achieve within the total public art budget. Final public art site locations and opportunities will be determined per project phase in close consultation with Indigenous communities, St. Paul's Hospital and Providence Health Care, the design team, and artists throughout the community engagement and public art selection process to allow for an open and flexible approach as well as artist-led initiatives. Feasibility and careful integration with the Hospital's programming to ensure that the public art program supports the design and function of the Health Campus, as well as the overall goal of healing, will be important considerations in determining the final public art site locations and opportunities. Public art opportunities requiring integration with the architecture and landscape design will be prioritized to ensure the selection of final artists and artworks to meet base-building design timelines and permitting requirements.

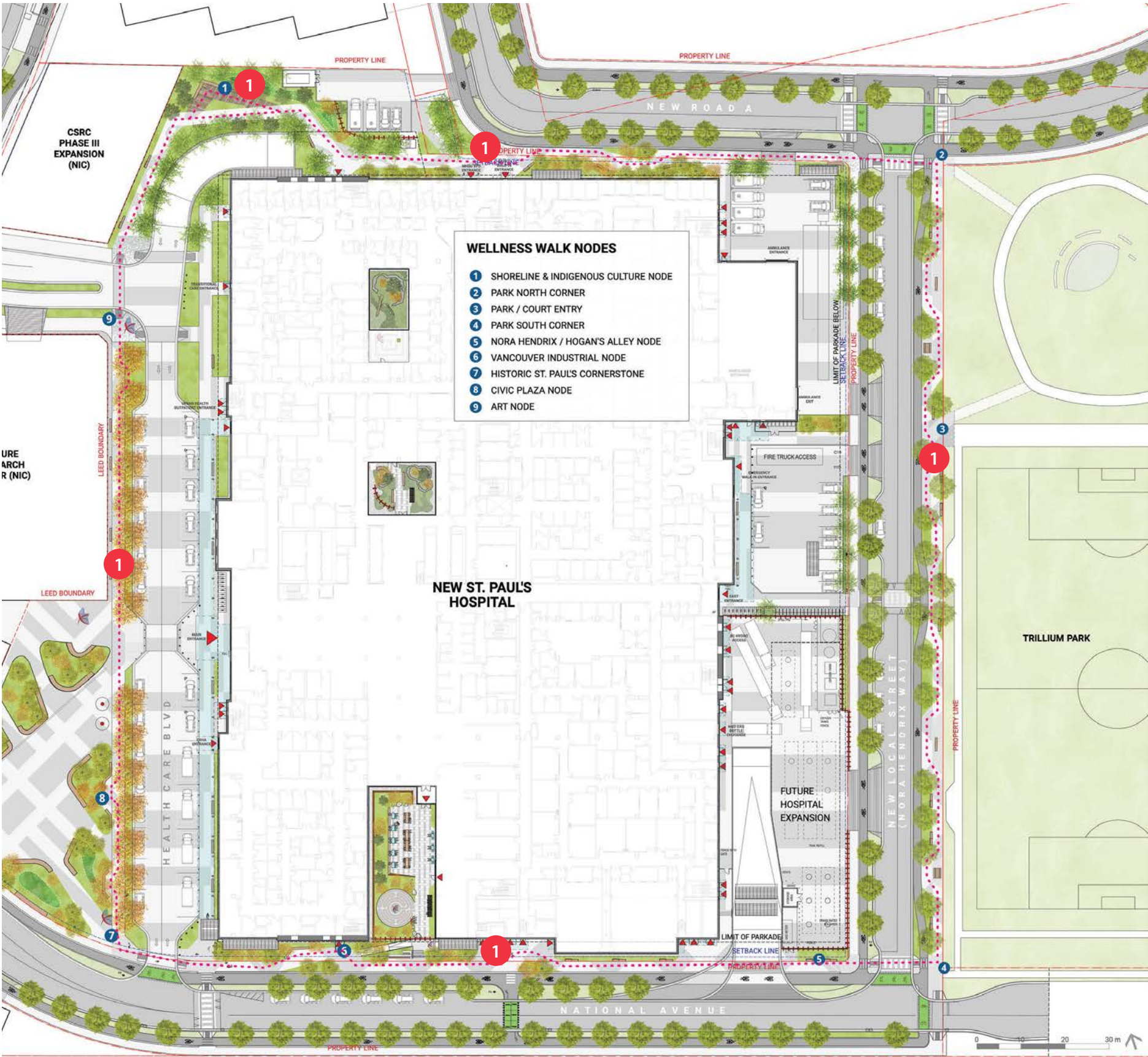
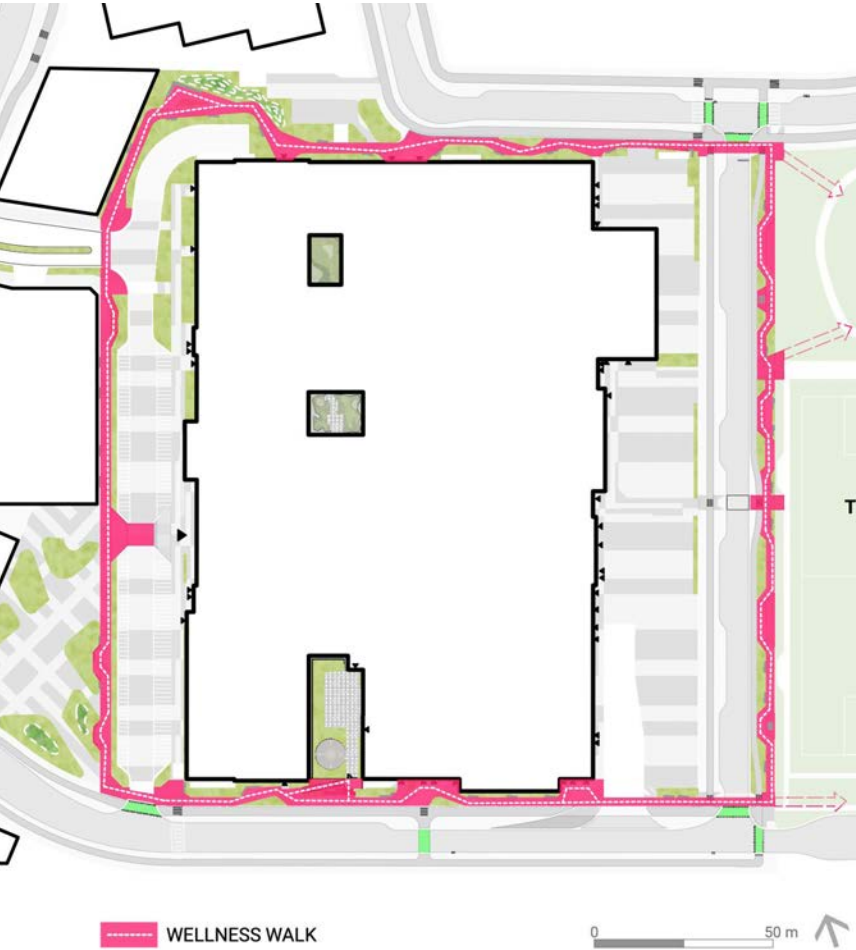
Significantly, the public art will also support the vision for the Wellness Walk, which encircles the health campus and provides a symbolic link to the historic False Creek shoreline. Strategically located at key points along the Wellness Walk, public art will integrate meaningfully with this campus-wide concept, fostering social connectivity and providing layers of meaning and opportunities for storytelling.



Phase 1 – Hospital & Health Campus Parcel Potential Public Art Site Locations

1. Integrated Artwork sited at various nodes along the Wellness Walk

- Situated at key locations within the open space "nodes" along the Wellness Walk, with a wide range of possibilities in approach, media, and form, including seating, lighting, and other integrations with the landscape and hardscape design
- Provides wayfinding, facilitates connectivity, and creates a sense of discovery
- Provides a meaningful opportunity for storytelling around the perimeter of the site in connection with the Wellness Walk node themes, as well as connecting with the broader Walk-The-Line concept planned for the South Creek Flats
- Supports moments of activity as well as quiet, intimate interludes, offering pedestrians and cyclists opportunities for rest and respite from the bustling built environment



2. Welcome Posts

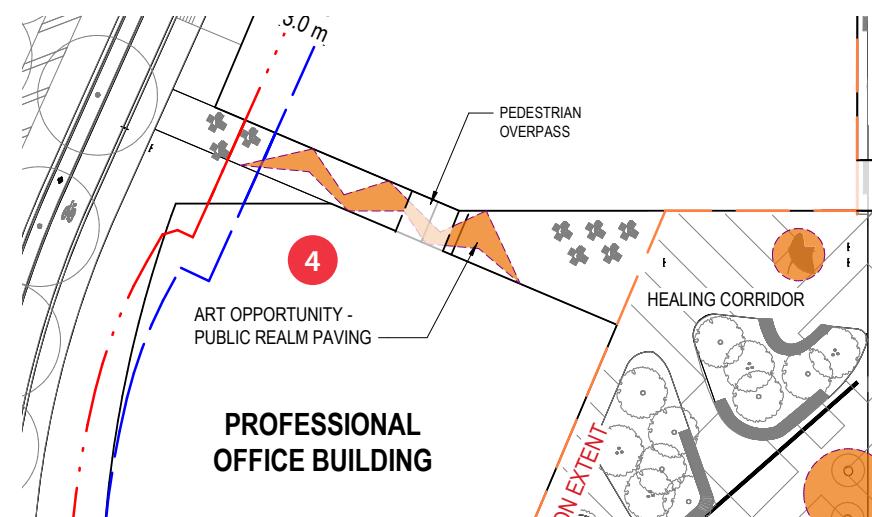
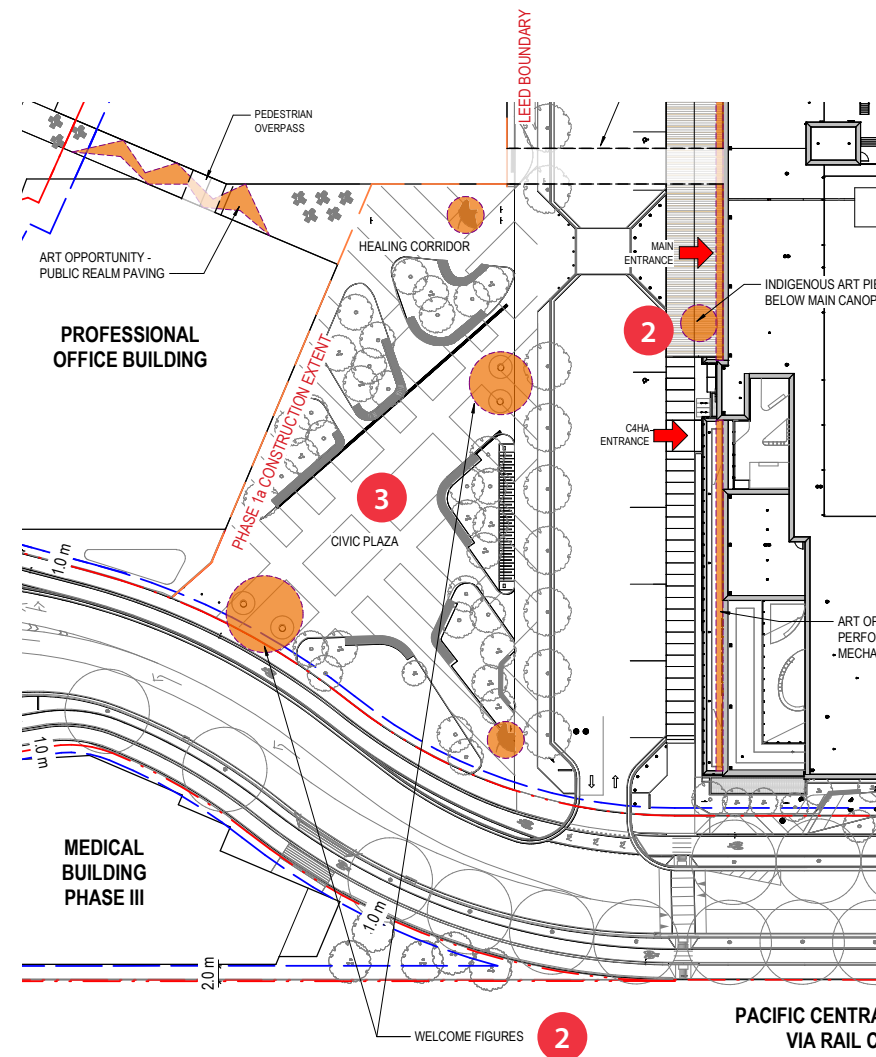
- 3 Welcome Posts – 1 for each Musqueam, Squamish, and Tsleil-Waututh, location to be determined in consultation with MST
- Landmark/gateway artwork providing placemaking and a sense of arrival, welcoming visitors to the site
- Support principles of Reconciliation and healing
- Form and materials could be traditional or contemporary, and may depend on the cultural availability of Red Cedar logs

3. Civic Plaza – Multiple Opportunities

- Includes opportunities for landmark sculpture, humanscale sculptural series, and integrated artwork, including seating and lighting
- Potential for an Indigenous weaving pattern integrated with the ground plane
- Possibility for temporary artwork programming in support of the planned uses for the Civic Plaza, including open air markets, the annual of Lights of Hope, performances, and other activities that would provide interest and engagement for the public as well as for the Hospital user group, including patients and their families
- Includes the Plaza Healing Corridor, which could provide an opportunity for artists to work with medicinal plant gardens, including traditional Indigenous plant medicines and Chinese herbal medicines, among others

4. Research Centre & Office Building Connection – Integrated Artwork

- Opportunity for an integrated artwork in the area connecting the Research Centre and Office Building, allowing for a wide range possibilities in approach, media, and form, including lighting
- Could involve the ground plane or take the form of a sculpture artwork suspended in the space connecting the two building
- Provides placemaking and wayfinding, facilitating pedestrian connectivity between the buildings and within the health campus more broadly



A Closer Look at the Potential for Temporary & Program-Based Public Art

Several opportunities for artist-led temporary public art projects and program-based artworks exist throughout the site in dialogue with the broader Hospital and public art programming. The intent is to provide as much flexibility as possible for a community-based and artist-led approach while providing curatorial oversight, allowing artists to determine the form, duration, and media of projects, well as the diverse groups they might engage, including the New St. Paul's Hospital user groups, Local and Urban Indigenous communities, and broader community and cultural groups, among others.

For example, artists invited to participate in the design process for medicinal and healing gardens may have the opportunity to propose working with various local arts and community groups to help conceptualize, carry out, and maintain garden-based projects as part of the Hospital's programming. Learning and participatory engagement opportunities can also exist alongside these types of projects, with artists leading workshops and other forms of public engagement.

Approaches to timeline and duration are variable, with some projects conceptualized to begin early, run alongside the development and construction phases, and culminate with the completion of the project and opening of the Hospital. For example, plans are underway to independently fund and develop a series of temporary murals integrated with the on-site construction signs and hoarding—one by each a Musqueam, Squamish, and Tsleil-Wautth artist—that will be mounted for the duration of construction with the potential to be relocated or reimagined inside the Hospital upon completion.

Artists may also be invited to propose public and participatory engagement as part of their concept proposals for permanent artwork as further ways to engage local communities in the creation of public art for the New St. Paul's Hospital and Health Campus.

Budget will be set aside for temporary artworks and related programming. Any programming that continues past project completion and occupancy permitting at the close of the project would be held in trust and managed by an independent entity. Details for this kind of programming would be developed in consultation with City staff to ensure Providence Health Care's fulfillment of their public art obligations for the development.

5. Main Entrance Building Façade – Perforated Screens for Mechanical Louvers (Level 4)

- Provides a highly visible and landmark opportunity for integrating public art into the architectural fabric of the Hospital at the main entrance
- Impacts how the building is read from the Civic Plaza, providing placemaking and wayfinding
- Possibility for an Indigenous weaving or other pattern
- Involves technical coordination with the design team for base-building structure and mechanical requirements
- Design-only opportunity with an artist working with proposed materials to meet building requirements

6. Conference Centre Building Façade

- Opportunity for public art integrated with the Conference Centre building façade at the south elevation fronting National Avenue
- Provides an expansive surface for a site-specific artwork with a wide range of possibilities in approach, media, and form, integrating public art into the architecture’s contemporary expression
- Offers high visibility and accessibility from National Avenue, with multiple engagement opportunities for a diverse array of audiences, including the Hospital user groups as well as pedestrians, cyclists, and motorists
- Contributes placemaking and wayfinding, welcoming visitors to the site, animating the public realm, and providing a dynamic backdrop along the Wellness Walk

7. In-Patient Towers Façade – Pattern Making

- Landmark opportunity for public art integrated with the 3 in-patient tower façades
- Design-only, with artist working with proposed building materials to provide an artwork pattern/design
- Provides placemaking with high visibility from a variety of viewpoints



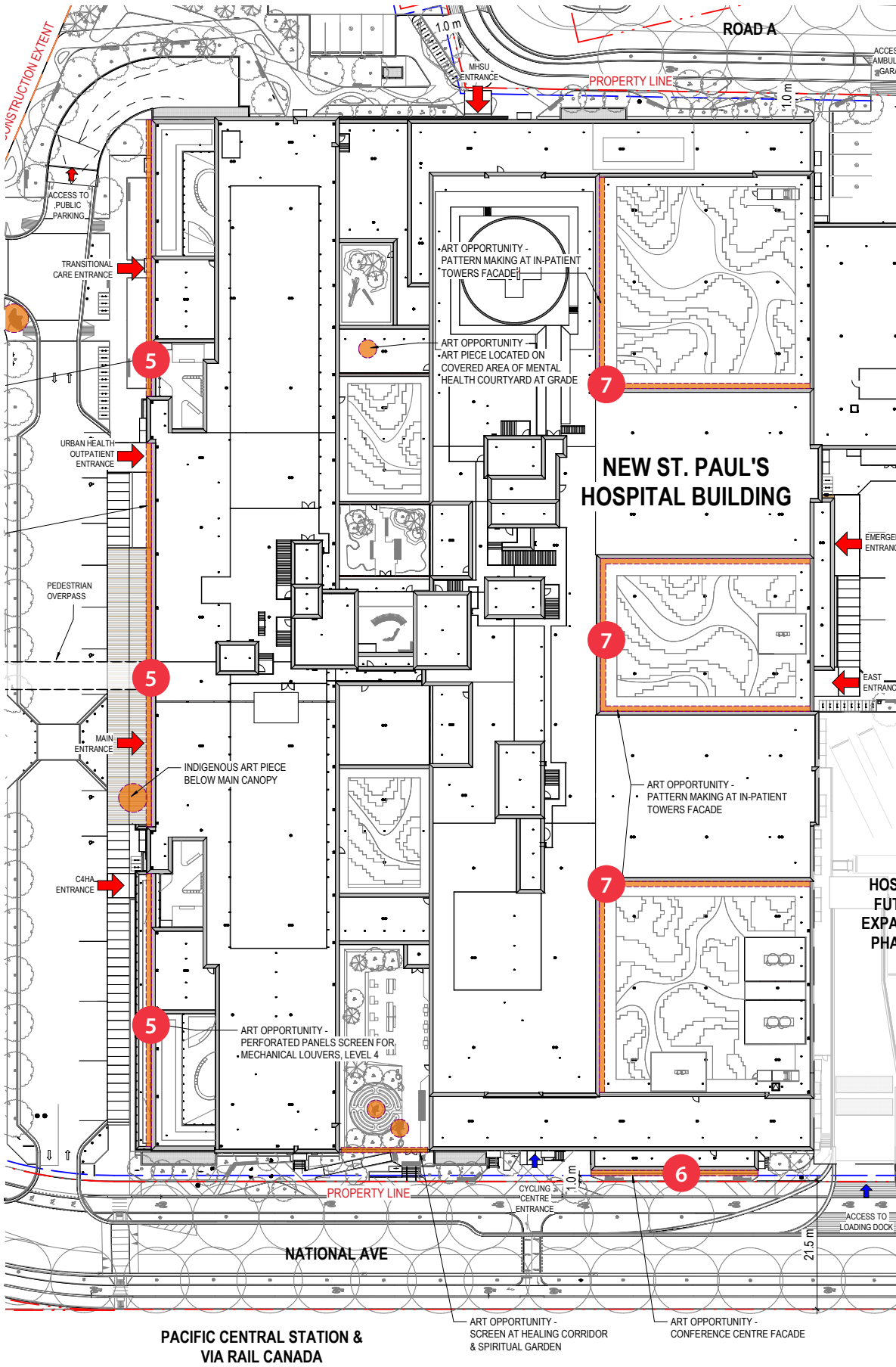
SOUTH WEST VIEW FROM PLAZA



SOUTH ELEVATION - CONFERENCE CENTRE



NORTH EAST VIEW - INPATIENT TOWERS



8. Screen at Healing Corridor & Spiritual Garden

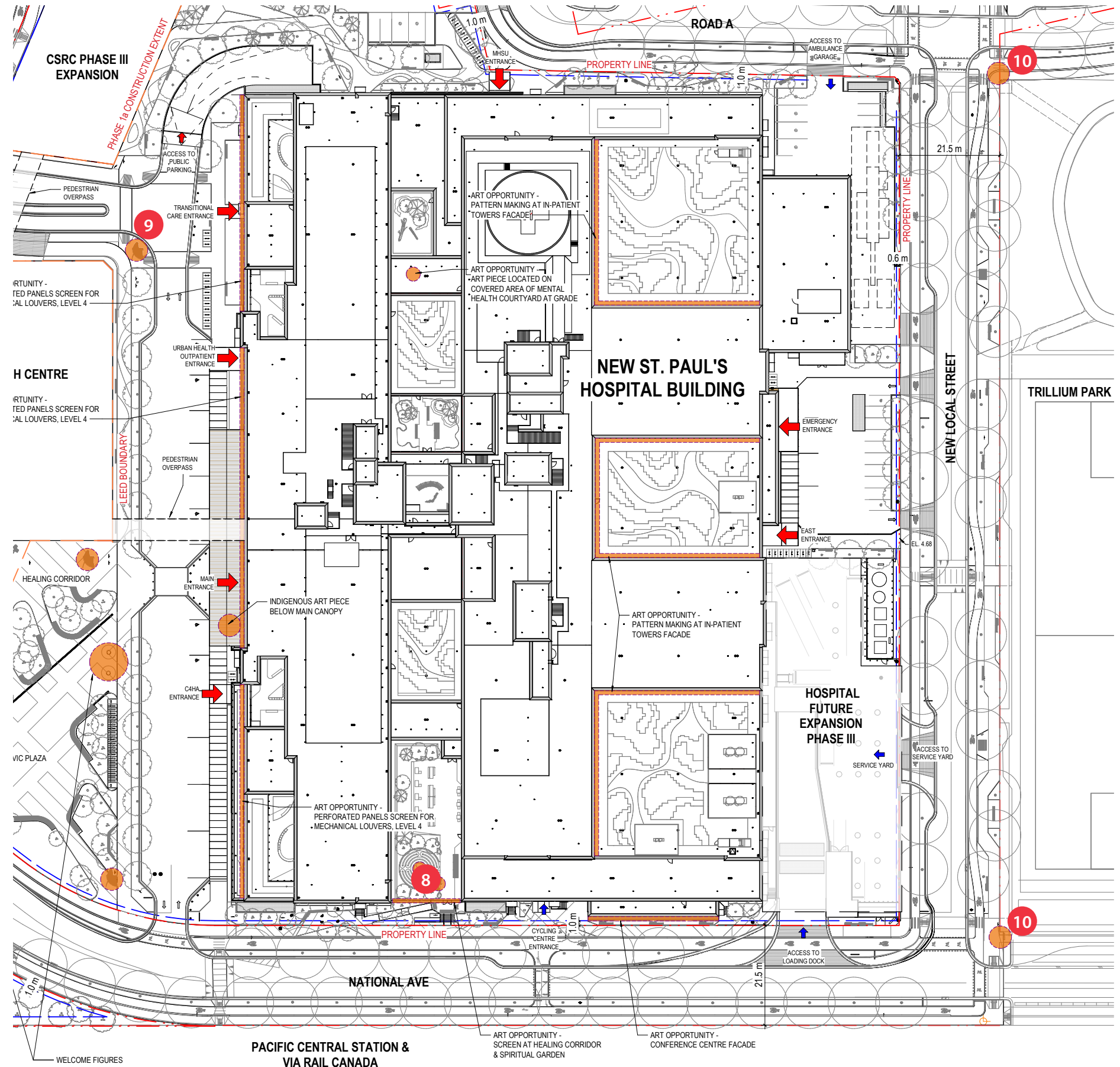
- Opportunity for public art integrated with the screen/fence bordering the Healing Corridor & Spiritual Garden and fronting National Avenue
- Opportunity to correspond with Conference Centre building façade as artwork sequence, or standalone artwork
- Allows for wide range of possibilities in approach, media, and form
- Humanscale and pedestrian-oriented, contributing wayfinding, animating the public realm, and providing a dynamic backdrop along the Wellness Walk

9. Northeast Corner of Research Centre – Sculptural

- Sculpture or humanscale sculptural series at the northeast corner of the Research Centre along Health Care Boulevard, across from the Transitional Care and Urban Health Outpatient entrances to the hospital, corresponding to node 9 of the Wellness Walk
- Allows for wide range of possibilities in approach, media, and form, including lighting
- Provides placemaking and wayfinding, facilitating pedestrian connectivity
- Situated within one of the Wellness Walk nodes, provides an important link through the center of the Health Campus, connecting with artworks sited at the entry points and along the Wellness Walk

10. New Local Street – Landmark/Gateway Sculptures

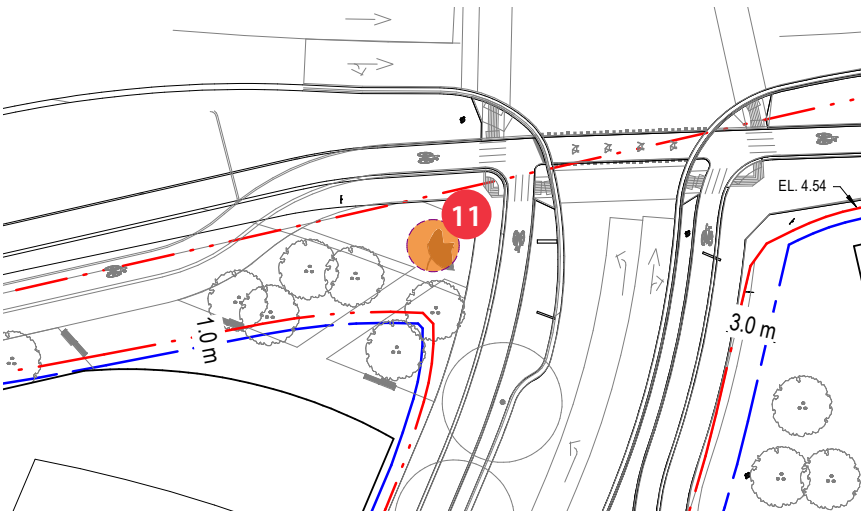
- Opportunity for landmark/gateway sculptures at the northeast and southeast corners of the New Local Street at the east end of the site, adjacent to Trillium Park and within the Wellness Walk (nodes 2 and 4)
- Allows for wide range of possibilities in approach, media, and sculptural form, including lighting
- Contributes placemaking and wayfinding, welcoming diverse Hospital users, visitors, and passersby to the site, as well as facilitating connections between the Hospital and adjacent park site
- Provides further points of interest and discovery along the Wellness Walk



Phase 2 – North, West, and South Parcels

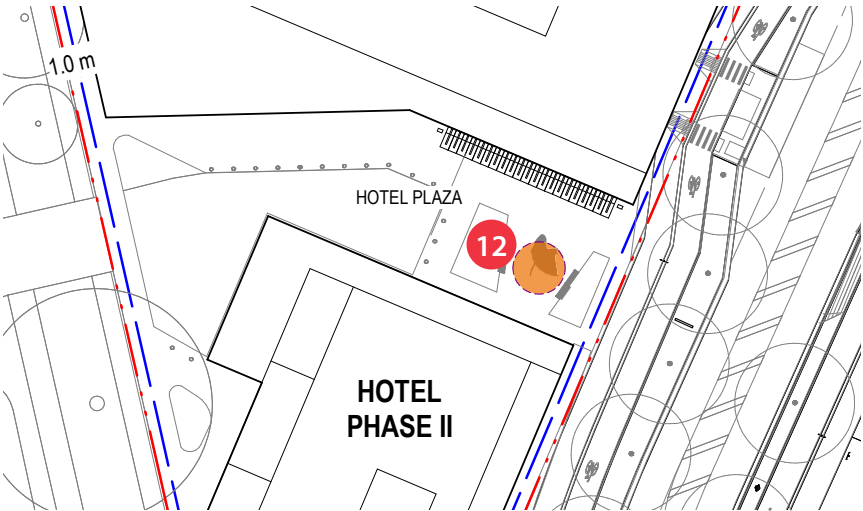
11. Northwest Corner of New High Street – Landmark/ Gateway Sculpture or Sculptural Series

- Opportunity for landmark/gateway sculptures at the northwest corner of New High Street at Prior Street, at the northwest end of the site
- Provides placemaking and wayfinding, welcoming Hospital users and visitors alike to the site
- Prominent corner offers high visibility, accessibility, and engagement opportunities to pedestrians, cyclists, and motorists traveling along Prior Street or using New High Street to connect through the site
- Allows for wide range of possibilities in approach, media, and sculptural form, including lighting



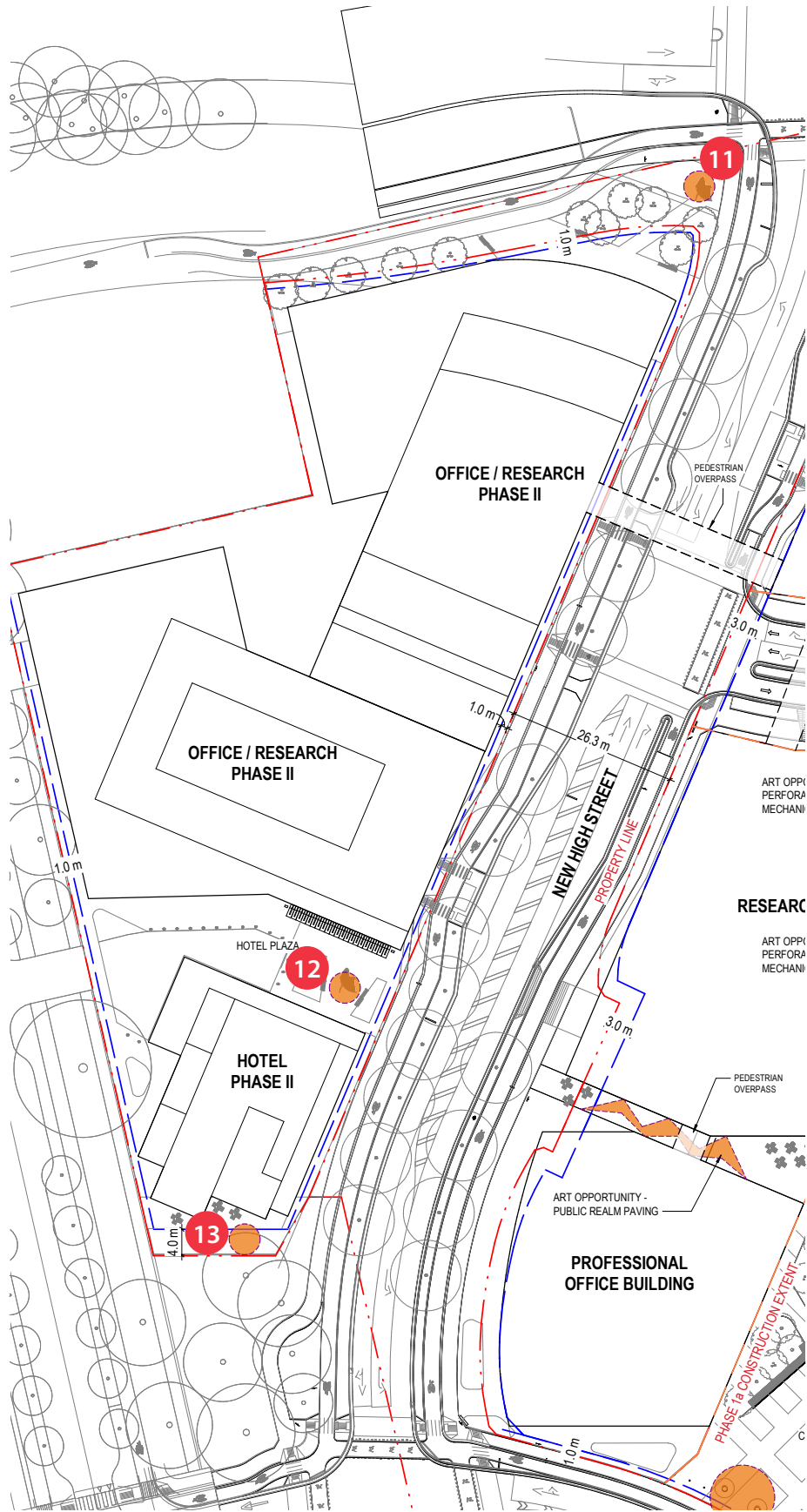
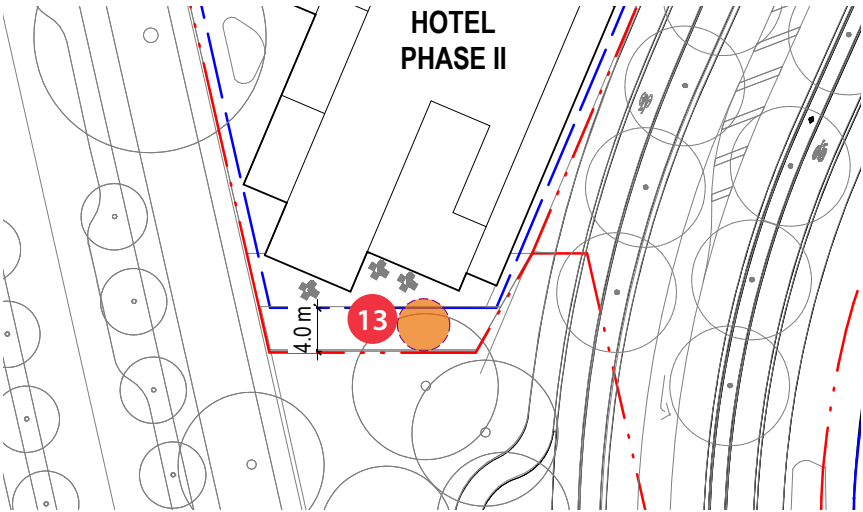
12. Hotel Plaza – Humanscale Sculpture or Integrated Artwork

- Opportunity for humanscale sculptures or integrated artwork in the Hotel Plaza between the Hotel and the Office/Research Buildings along New High Street
- Allows for wide range of possibilities in approach, media, and form, including benches, seating, lighting, as well as use of the ground plane
- Provides placemaking and wayfinding, welcoming Hospital users and visitors alike to the site
- Supports moments of activity as well as quiet, intimate interludes, offering pedestrians and Hotel visitors opportunities for rest and respite from the bustling built environment



13. Southern Hotel/Park Edge – Landmark or Humanscale Sculpture

- Opportunity for landmark or humanscale sculpture or sculptural series at the southern Hotel/Park edge at the southwest corner of the site where National Avenue, New High Street, and Station Street meet
- Contributes placemaking and wayfinding, welcoming Hospital users, visitors, and passersby to the site
- Facilitates connections between the site and the adjacent Thornton Park
- Offers high visibility, accessibility, and engagement opportunities for a diverse array of audiences, including pedestrians, cyclists, and motorists
- Allows for wide range of possibilities in approach, media, scale, and form, including lighting
- Provides moments of interest and discovery



Phase 3 – Health Campus Expansion

- Potential locations for public art to be determined further along in the development and design process
- Consideration is being given to include an Indigenous Wellness and Welcoming Centre planned for the southern parcel of the site on the south edge of National Avenue, to be developed in consultation and collaboration with Host Nations

Precedent Images

Landmark Sculpture



Debra Sparrow, *Blanketing the City*, 2019. Vancouver, BC



Douglas Coupland, *Digital Orca*, 2009. Vancouver, BC



Martin Creed, *Understanding*, 2016. New York, NY



Myfanwy MacLeod, *The Birds*, 2010. Vancouver, BC



Louise Bourgeois, *Maman*, 1999. Guggenheim Bilbao, Spain



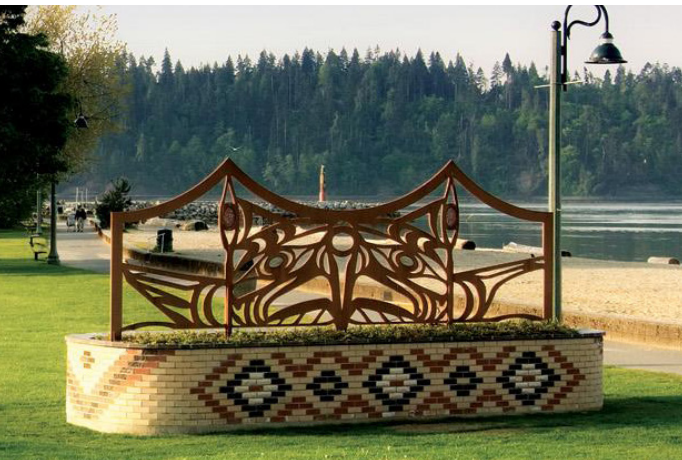
Marianne Nicolson, *The Land is a Person*, 2012. North Vancouver, BC



Brent Sparrow, *The Musqueam Post (The Musqueam s̓p̓:łqəy̓ qeqən)*, 2016. Vancouver, BC



Chrystal Sparrow, 2019. Vancouver School Board Headquarters, Vancouver BC



Xwalactun (Rick Harry), *Snam Smanit (Spirit of the Mountain)*, 2006. West Vancouver BC



Roxy Paine, *Conjoined*, 2007. New York, NY



Jaume Plensa, *Behind the Walls*, 2018. New York, NY

Precedent Images

Integrated & Functional Artwork



Susan Point, *Tree of Life*, 2009. Christ Church Cathedral, Vancouver, BC



Olafur Eliasson, *Harpa Reykjavik Concert Hall and Conference Centre*, 2005-2011.



Thomas and Kelly Cannell, *Land and Sea*, 2015. Vancouver, BC



Jeppe Hein, *Modified Social Benches*, 2019. Charlottenlund, Denmark



James Harry, *Xwemelch'stn (Fast Moving Water of Fish)*, 2019. West Vancouver, BC



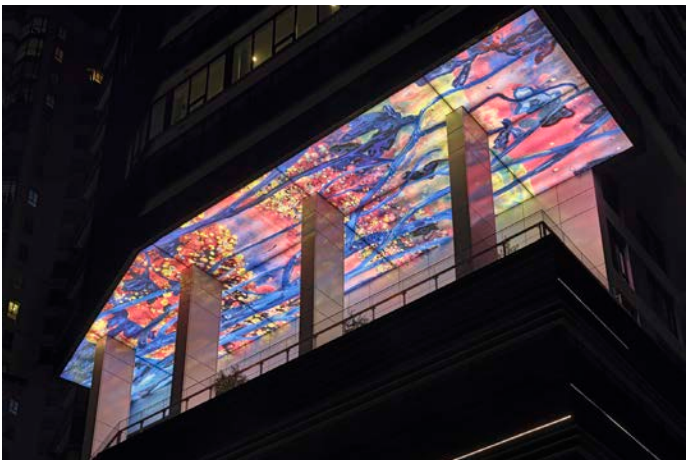
Thomas Heatherwick, *Spun Chair*, 2007 - 2011. Los Angeles, CA



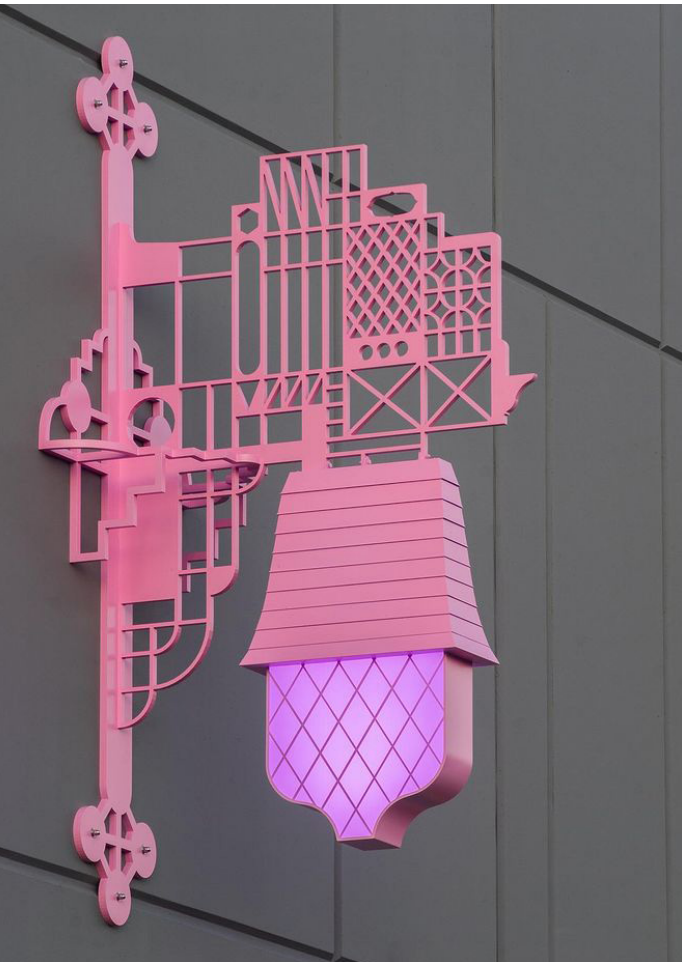
Kelly Cannell, *Sea to Sky*, 2017. Vancouver, BC



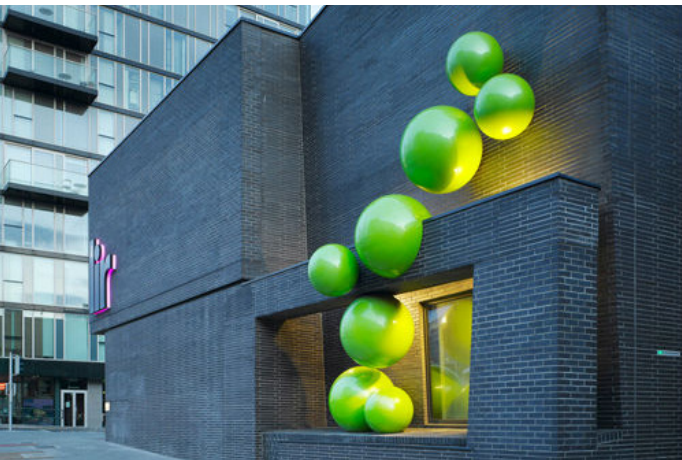
James Harry, *Xwemelch'stn (Fast Moving Water of Fish)*, 2019. West Vancouver, BC



Ben Reeves, *Viewpoint*, 2020. Vancouver, BC. Photo: Rachel Topham Photography



Alex Morrison, *Folly Electric*, 2020. Burnaby, BC



Alice Rekab, *Units of Potential*, 2011. LIR Academy, Dublin, Ireland

Precedent Images

Humanscale Sculpture



Mary Anne Barkhouse, *Quarry*, 2015. Markham, ON



Jody Broomfield, *Salmon Spindle Whorl*, 2013. West Vancouver, BC



Huang Zhiyang, *Possessing Numerous Peaks*, 2012. Shanghai, China



Sanaz Mazinani, *Rolling Reflection*, 2020. San Francisco



Dan Graham, *Hedge Two-Way Mirror Walkabout*, 2014. New York, NY



Lyse Lemieux, *Family: Five Figures for a Triangle*, 2020. Vancouver, BC



Peter Gazendam, *A Long Conversation (for Oona)*, 2017. Vancouver, BC



Steven Brekelmans, *Natural Resources*, 2018. Burnaby, BC



Alex Tedlie-Stursberg, *Cosmic Boulders*, 2021. Port Moody, BC



Thomas Cannell, *Vitality & State of Nature Deep Lake Precinct Spirit Square*, 2010. Burnaby, BC



Myfanwy MacLeod and Shannon Oksanen, *Playtime*, 2016. Vancouver, BC

Precedent Images

Temporary Projects & Program-Based Artworks



Tree Protection Zone, 2021. Hart House & Art Museum at UofT, Toronto, ON



Luminothérapie, 2021. Montreal, QC



Level Up street pavillion, 2018. Rijeka, Croatia



Holly Schmidt, Moveable Feast, 2012. Burnaby Art Gallery, Burnaby, BC



Nicole Dextras, Cultivate, 2008. I-Park, East Haddam, CN



Fountain Studio of Ark, Eyepiece, 2017. Vancouver, BC



Big Print Project, 2016. Dr. Sun Yat-Sen Chinese Gardens, Vancouver BC



Natalie Jeremijenko, Farmacy, 2012. NYU Urban Farm Lab, New York, NY



Queens Council on the Arts, "Creative Conversations: A Dialogue with Community Engaged Artists," 2015. Astoria, NY



Fountain Studio of Ark, Eyepiece, 2017. Vancouver, BC



Atheana Picha, roadway mural at Bute/Alberni pop-up plaza, 2020. Vancouver, BC



Matthew Mazzotta, Open House, 2013. York, AL

Public Art Budget

The total estimated public art contribution for Phase 1 of the New St. Paul’s Hospital and Health Campus is approximately **\$3,932,356**.

\$2,000,000 of this amount is comprised of a donation from the Audain Foundation and will be allocated towards Indigenous artwork, prioritizing public art commissions by Musqueam, Squamish, and Tsleil-Waututh artists.

The remaining estimated **\$1,932,356** will be allocated towards an open public art program that will include public art commissions by local, national, and international artists as well as Indigenous artists—both emerging and established.

Phase 1: Hospital & Health Campus Parcel Public Art Contribution Calculation

$184,531\text{m}^2 \text{ of eligible FSR } \times \$21.31 \text{ per m}^2 = \$3,932,356^*$

Indigenous Public Art Program	\$2,000,000
Open Public Art Program	<u>\$1,932,356</u>
TOTAL	\$3,932,356

The amount allocated for each public art opportunity will be inclusive of administration costs, which includes public art consultation and the public art selection process, including selection panel and artist honorariums for artists to develop concept proposals. The amounts allocated for the public artworks will cover the full costs associated with artwork installation, including the artist fee, artwork materials and fabrication, lighting (specific to the artwork) detailed design drawings, engineering drawings and certificates, construction coordination and site preparation (specific to the artwork), artwork insurance, artwork storage (if required), transportation, installation, any travel related expenditures, and final documentation with professional image of the completed work(s). All applicable taxes are in addition to the artwork budget.

Preliminary proposed budget allocations are provided separately.

**The 184,531 m² eligible FSR is the maximum potential floor area that can be built out on the Health Campus. This number may change slightly once the final buildable area is confirmed. The full public art rate of \$21.3125 per m² (\$1.98 per sq. ft.) will be used for final public art budget calculations.*

Public Art Budget per Phase of Development

	Eligible FSR (m²)	Public Art Rate (\$21.3125 per m²)*	Public Art Budget
Phase 1 – Hospital & Health Campus Parcel Office Buildings	184,531	\$21.31	\$3,932,356
Phase 2 – North, West, and South Parcels	80,132	\$21.31	\$1,707,613
Phase 3 – Health Campus Expansion	45,887	\$21.31	\$977,852
TOTAL	310,550		\$6,617,821

Note: The *Public Art Budget per Phase of Development* table provides estimated potential floor areas and associated public art budget contributions. These amounts are subject to change once final buildable areas are confirmed during the development permitting process for each project phase.

**The full public art rate, currently \$21.3125 per m² (\$1.98 per sq. ft.) as indicated in the Public Art Policy and Procedures for Rezoned Developments (2018), will be used for all final public art budget calculations. The abbreviated rate of \$21.31 shown in the table was used to maintain consistency with those estimated amounts indicated in the rezoning conditions for the City of Vancouver.*

Indigenous Consultation & Community Engagement

The public art program for the New St. Paul’s Hospital and Health Campus will involve **extensive, meaningful community engagement and consultation** with sovereign host Musqueam, Squamish, and Tsleil-Waututh First Nations, as well as urban and regional Indigenous peoples, Providence Health Care, False Creek Flats, and broader communities to ensure an inclusive public art process, plurality of voices, and representation over the course of the project.

Community engagement will be multi-layered, inclusive, and responsive, and will include a combination of extensive research, consultation, learning, and engagement activities.

The intent and goal of the community engagement process is to:

- Establish ongoing dialogue with MST throughout the public art process to allow for greater collaboration and learning in ways that respect Indigenous cultural protocols and ways of knowing
- Foster ongoing dialogue among the MST, urban and regional Indigenous, Providence Health Care, False Creek Flats, and broader communities to facilitate collective understanding and strengthen relations
- Generate meaningful input from a wide range of community members and stakeholders for greater understanding of local interests and aspirations in the development of the public art program for the site
- Thoughtfully guide and inform the selection of Indigenous artists to honour the Nations on whose territories the New St. Paul’s Hospital is located
- Weave learning outcomes and feedback into the selection process and Public Art Project Terms of Reference provided to shortlisted artists and selection panel members
- Facilitate a variety of public programming and learning opportunities
- Provide meaningful opportunities to bring together Indigenous communities, artists, and interested publics through public art

Ballard Fine Art will work closely with an Indigenous Collaborator & Cultural Consultant as an integral member of the project team to provide direct experience and knowledge working with local Indigenous peoples, artists, and communities, as well as facilitating community engagement.

Established early in the public art process to allow for greater collaboration, understanding, and learning, the community consultation strategy for the New St. Paul’s Hospital and Health Campus will offer a layered approach, and will include a combination of the following:

- Ongoing consultation, dialogue, and meetings with the three Host Nations of Musqueam, Squamish, and Tsleil-Waututh, tailoring approaches and forms of consultation to respect protocols and ways of working unique to each Nation
 - e.g. meeting with Elders, Knowledge Keepers, cultural leaders, and artists to learn about ideas and issues related to arts and culture; facilitating community dialogue; and hosting focus groups and open houses in accessible venues
- Harnessing partnerships and coordinating with the Vice President, Indigenous Wellness and Reconciliation and Director, Indigenous Relations and Community Engagement at Providence Health Care to ensure alignment and strengthen Indigenous engagement activities
- Hosting smaller focused or informal coffee meetings with members of the local community, community associations, and arts and culture organizations for further feedback and input on the public art
- A public Open House hosted online or in person at a local arts, cultural, or community venue to share the public art vision and approach
- The establishment of a Community Advisory to provide local knowledge and a voice for the community, as well as input and commentary to the selection panel and shortlisted artists as they develop their concept proposals. The advisory will include representation from MST as well as members from the broader communities, who will be paid in recognition of their time, work, knowledge, and contributions
- Weave in and facilitate opportunities for the public to learn from First Nation artists and community members, and develop a deeper understanding and appreciation of Indigenous knowledge, protocols, law, art, and culture
- Learning and public engagement opportunities, including artist talks, art unveiling celebrations, and publication and documentation materials

Potential Community Advisory Composition

Representatives from each Musqueam, Squamish, and Tsleil-Waututh Nations (3)
Representative from Providence Health Care (1)
Vice President, Indigenous Wellness and Reconciliation (1)
Representative from St. Paul’s Hospital Art Committee (1)
Local Arts Representative (1)
False Creek Flats Community Representative (1)

Local Arts & Culture Organizations

Burrard Arts Foundation (BAF)
Access Gallery
Centre A: Vancouver International Centre for Contemporary Asian Art
Or Gallery
grunt gallery
Libby Leshgold Gallery
ECUAD
Centre for Digital Media
Vancouver Institute of Media Arts (VanArts)
The Arts Factory (Arts Factory Society)
Parker Street Studios
Dancehouse
Aphotic Theatre
The Only Animal Theatre Society
eatART Foundation
EarthHand Gleaners Society

Community Organizations

Vancouver Aboriginal Friendship Centre Society
Urban Native Youth Association
Chinatown Legacy Stewardship Group
Hogan’s Alley Society
Strathcona Community Centre
Environmental Youth Alliance
Vancouver Heritage Society

Selection Process

Given the complexity of the New St. Paul’s Hospital and Health Campus project, stakeholder group, and diversity of public art opportunities, each public art site location identified will require an individual selection process tailored to suit the site conditions and contexts. The process may involve diverse and multifaceted approaches such as two-stage artist invitationals, interviews, limited open calls, and open calls. Knowledgeable selection panels comprised of MST cultural representatives, independent art professionals, community members, and the project team will recommend the final artworks and artists/artist teams to be selected for each public art opportunity. The selection approach for each public art opportunity will be inclusive and developed in conversation with St. Paul’s Hospital and Providence Health Care, as well as through the community engagement process.

The selection process for public art commissions by Indigenous artists will be determined through consultation with the Musqueam, Squamish, and Tsleil-Waututh to ensure recognition and support of Indigenous cultural protocols, ways of knowing, and representation with respect to both traditional and contemporary art forms.

Artists will be selected early in the process and will have an opportunity to become integral members of the New St. Paul’s Hospital design team, working in close collaboration with the project manager, architect, and landscape architect to successfully integrate public art within the site. The artist selection process and installation of artworks at the proposed site locations will be realized strategically to align with the overall project timeline. Public art opportunities requiring careful integration with the architecture and landscape design will be prioritized to ensure the selection of final artists and artworks to meeting building design timelines and permitting requirements.

St. Paul’s Hospital and Providence Health Care are committed to selecting a diverse array of public artworks that are well-integrated to the site, historical, and community contexts, facilitating engagement, enriching the lives of Vancouver residents and visitors, and promoting Indigenous art, culture, awareness and understanding.

All stages of the selection process will be facilitated by Ballard Fine Art and the Indigenous Collaborator & Cultural Consultant.

More than one selection panel may be established to ensure local Indigenous knowledge and representation for both Indigenous and open public art commissions, while also facilitating curatorial cohesion throughout the site. To facilitate a smooth and productive process, it is recommended that selection panels be comprised of five (5) voting members, with further input and commentary provided by the non-voting Community Advisory. Selection panel members, excluding members from St. Paul’s Hospital, Providence Health Care, and the design team, will be paid honorariums for their work.

Selection Panel - Indigenous Public Art Program

- Musqueam Art & Cultural Representative (1)
- Squamish Art & Cultural Representative (1)
- Tsleil-Waututh Art & Cultural Representative (1)
- St. Paul’s Hospital/Providence Health Care Stakeholder Representative (1)
- Member of the New St.Paul’s Hospital Design Team (1)

Selection Panel - Open Public Art Program

- MST Art & Cultural Representative (1)
- Art Professional (2)
- St. Paul’s Hospital/Providence Health Care Stakeholder Representative (1)
- Member of the New St.Paul’s Hospital Design Team (1)

Role of the Community Advisory in the Selection Process

The role of the community advisory is to provide local knowledge, history of the land, direct experience living and working in the neighbourhood, and understanding of the site context, as well as insight into the diverse communities’ aspirations around public art to inform the selection process and assist artists in the development of their concept proposals.

The advisory will meet with the selection panel and shortlisted artists, providing feedback, commentary, and important perspectives on both the neighbourhood context and the New St. Paul’s Hospital and Health Campus project for consideration. Community advisors will also provide guidance for celebrations and programming related to the public artworks upon completion.

The intent is not for non-Indigenous members to advise Indigenous artists on their approach and development of concept proposals for the site. Careful steps will be taken to ensure a respectful process and self-determination for Indigenous peoples.

Open Calls

The open call selection process involves a two-stage open call for Expressions of Interest (EOI) to local, regional, and national artists and artist teams at a variety of levels of experience, from emerging to established. Eligibility for some open calls may be limited to Indigenous artists.

In stage one of the selection process, artists will submit an Expression of Interest for consideration by the selection panel. The selection panel will review all EOI submissions and determine a shortlist of 3-5 artists for either an interview or to develop a concept proposal for the public art opportunity.

In stage two, the shortlisted artists will be invited to for an interview or two develop a concept proposal. The shortlisted artists will be provided with an in-depth orientation to the project and site, the public art opportunity, and the community contexts, and will have an opportunity to meet the design team and community advisory. The shortlisted artists will be provided with an honorarium commensurate with the public art budget for their work, paid upon completion of the interview process and/or presentation of their concept proposal. If interviews are conducted, only one artist or artist team will be invited to develop a concept proposal.

Following the selection panel’s review of the shortlisted artist concept proposal(s), a final artist and artwork will be recommended for selection. Prior to notifying the final artist nominated, Providence Health Care and the New St. Paul’s Hospital and Health Campus design team will have an opportunity to review the nominated artist’s concept. The final artist/artist team selected will enter a contract agreement with Providence Health Care to complete the proposed artwork on time and budget, and will proceed to Detailed Design and Fabrication/Installation phases.

Artist Invitationals

The artist invitational is a two-stage selection process. In stage one, the selection panel will be oriented to the New St. Paul’s Hospital and Health Campus development project, the public art opportunity, and the community context. With an opportunity to meet with the community advisory, Ballard Fine Art and the selection panel will conduct in-depth research and nominate a longlist of 15-20 suitable artists or artist teams for consideration. The selection panel will collectively discuss the merits of the nominated artists’ past work and potential fit with the respective public art opportunity. Upon review, the selection panel will determine a shortlist of 3-5 artists to develop a concept proposal.

In stage two, the shortlisted artists will be invited to develop a concept proposal. The shortlisted artists will be provided with an in-depth orientation to the project and site, the public art opportunity, and the community contexts, and will have an opportunity to meet the design team and community advisory. The shortlisted artists will be provided with an honorarium commensurate with the public art budget for their work, paid upon receipt and presentation of their concept proposal.

Following the selection panel’s review of the shortlisted artist proposals, a final artist and artwork will be recommended for selection. Prior to notifying the final artist nominated, Providence Health Care and the New St. Paul’s Hospital and Health Campus design team will have an opportunity to review the nominated artist’s concept. The final artist/artist team selected will enter a contract agreement with Providence Health Care to complete the proposed artwork on time and budget, and will proceed to Detailed Design and Fabrication/Installation phases.

Artist Interviews

The artist interview selection process involves three stages. In stage one, the selection panel will be oriented to the New St. Paul’s Hospital and Health Campus development project, the public art opportunity, and the community context. With an opportunity to meet with the community advisory, Ballard Fine Art and the selection panel will conduct in-depth research and nominate a longlist of 10-15 suitable artists or artist teams for consideration. The selection panel will collectively discuss the merits of the nominated artists’ past work and potential fit with the respective public art opportunity. Upon review, the selection panel will determine a shortlist of up to 5 artists to invited for an interview.

In stage two, the shortlisted artists will be provided with an in-depth orientation to the project and site, the public art opportunity, and the community contexts, and will have an opportunity to meet the design team and community advisory. Following the orientation, artists will participate in an interview with the consultant and selection panel, for which they will be paid an honorarium.

In stage three, one artist or artist team will be selected to develop a concept proposal in consultation with the design team. The selected artist will be provided with an honorarium commensurate with the public art budget for their work, paid upon receipt and presentation of their concept proposal. The final artist/artist team selected will enter a contract agreement with Providence Health Care to complete the proposed artwork on time and budget, and will proceed to Detailed Design and Fabrication/Installation phases.

Artist Selection Criteria

When reviewing artist submissions and concept proposals, selection criteria may include the following:

- i. Artistic merit, creativity, and quality of proposed concept with a clear vision for the final artwork
- ii. Demonstrated understanding of the public space and the impact on the proposed site
- iii. Understanding of the St. Paul's Hospital, site, and community contexts
- iv. Appropriate consideration of material and form
- v. Rigours of research

- vi. Demonstrated feasibility in terms of proposed budget, timeline, implementation, safety, and maintenance
- vii. Demonstrated feasibility of proposed community partnerships, public engagement, and programming if applicable
- viii. Consideration of proposed key elements specific to each public art opportunity (e.g. landmark/gateway artwork, temporary projects, placemaking, health and wellness, social connectivity, etc.)
- ix. Artistic quality of artwork presented in the documentation of past work
- x. Availability

Indigenous Artist Eligibility & Selection Criteria

Eligibility and selection criteria for Indigenous public art commissions within the Indigenous Public Art Program will be developed in consultation with the Indigenous Collaborator and Musqueam, Squamish, and Tsleil-Waututh. Some public art opportunities may prioritize artwork by local MST artists, while others may also be open to Urban Indigenous artists more broadly. Indigenous artists will also be considered for public art opportunities identified within the Open Public Art Program.

Public Art Timeline

Indigenous Consultation & Community Engagement	Ongoing
Preliminary Public Art Plan (PPAP)	October 2021
Detailed Public Art Plan (DPAP)	December 2021
Initiate Artist Selection Process	January 2022
Final Artist Selections	May - June 2022
Artist Agreements	August 2022
Artwork Installation – Phase 1A	July 2026

Note: Dates are best estimated targets and are subject to change.
Integrated artworks requiring careful integration with the building design and consultation with the design team will be prioritized to ensure timely selection of final artists and artworks

References

“Ceremonial Blessing for the new St. Paul’s Hospital and Indigenous Wellness and Welcoming Centre.” Project Updates, The New St. Paul’s Hospital & Health Campus. August 9, 2021. <https://thenewstpauls.ca/ceremonial-blessing>

City of Vancouver. *Culture/ Shift: Blanketing the City in Arts & Culture*. Vancouver Culture Plan 2020-2029. <https://vancouver.ca/files/cov/vancouver-culture-shift.pdf>

City of Vancouver. *False Creek Flats Area Plan*. May 2017. <https://vancouver.ca/files/cov/false-creek-flats-plan.pdf>

City of Vancouver. *Greenest City Action Plan*. 2015-2020. <https://vancouver.ca/files/cov/greenest-city-2020-action-plan-2015-2020.pdf>

City of Vancouver. *Healthy City Strategy*. 2015.

City of Vancouver. *Making Space for Arts and Culture: Vancouver Cultural Infrastructure Plan*. September 2019. <https://vancouver.ca/files/cov/making-space-for-arts-and-culture.pdf>

City of Vancouver. *Public Art Policy and Procedures for Rezoned Developments*. 2018.

City of Vancouver. *The Flats Area Profile: An Overview of Your False Creek Flats*. 2015. <https://vancouver.ca/files/cov/false-creek-flats-area-profile.pdf>

CityStudio Vancouver, "History of Northeast False Creek." 2018. <https://citystudiovancouver.com/projects/history-of-northeast-false-creek/>

Cole Projects for the City of Vancouver Public Art Program. *Northeast False Creek Public Art Plan*. 2018. <https://vancouver.ca/files/cov/northeast-false-creek-public-art-plan.pdf>

Donald Luxton and Associates Inc. *Eastern Core Statement of Significance*. April 2013. <https://vancouver.ca/files/cov/statement-of-significance-false-creek-flats-2013-april.pdf>

New St. Paul’s Hospital and Health Campus Policy Statement. June 2017. <https://vancouver.ca/files/cov/new-st-pauls-hospital-health-campus-final-policy-statement-june-2017.pdf>

The Vancouver Economic Commission. *The Flats Economic Development Strategy*. Spring 2017. <https://council.vancouver.ca/20170517/documents/cfsc1-AppendixB-FalseCreekFlatsPlan.pdf>

“

Art has the power to inspire, to heal, to transform, to rehabilitate, to bear witness, and to make us believe that there are better days ahead.... Art has the power to elicit compassion and generosity.

– Michaëlle Jean, former Governor General of Canada