

Existing Conditions

What's there now?

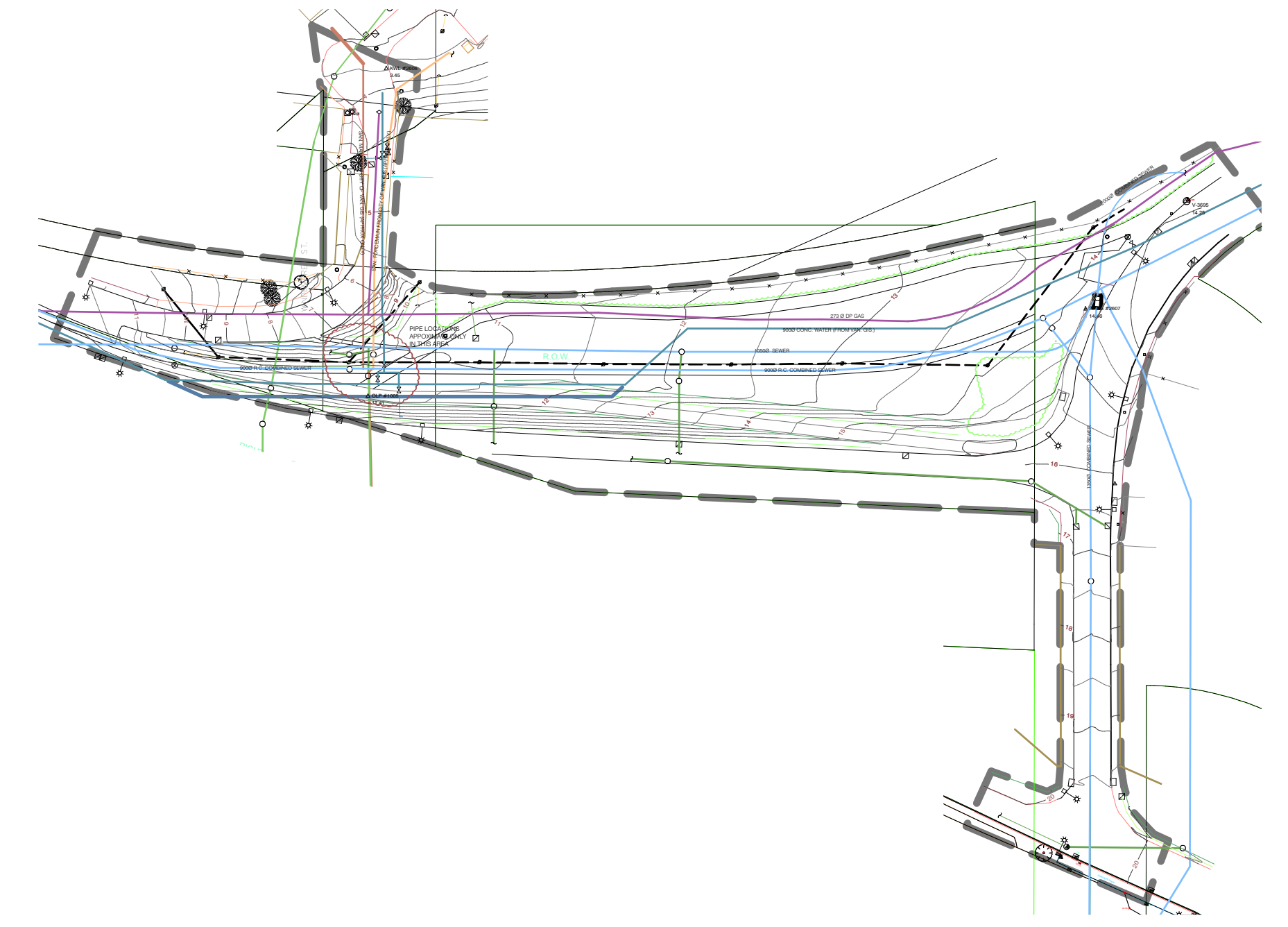
Opportunities

- Connections to Hastings Park, New Brighton Park, and destinations east and west via greenways and alternative transportation networks, such as the connection to the Second Narrows Bridge;
- Ecological opportunity for accommodate water flows from the upper watersheds and the Sanctuary through to Burrard Inlet.

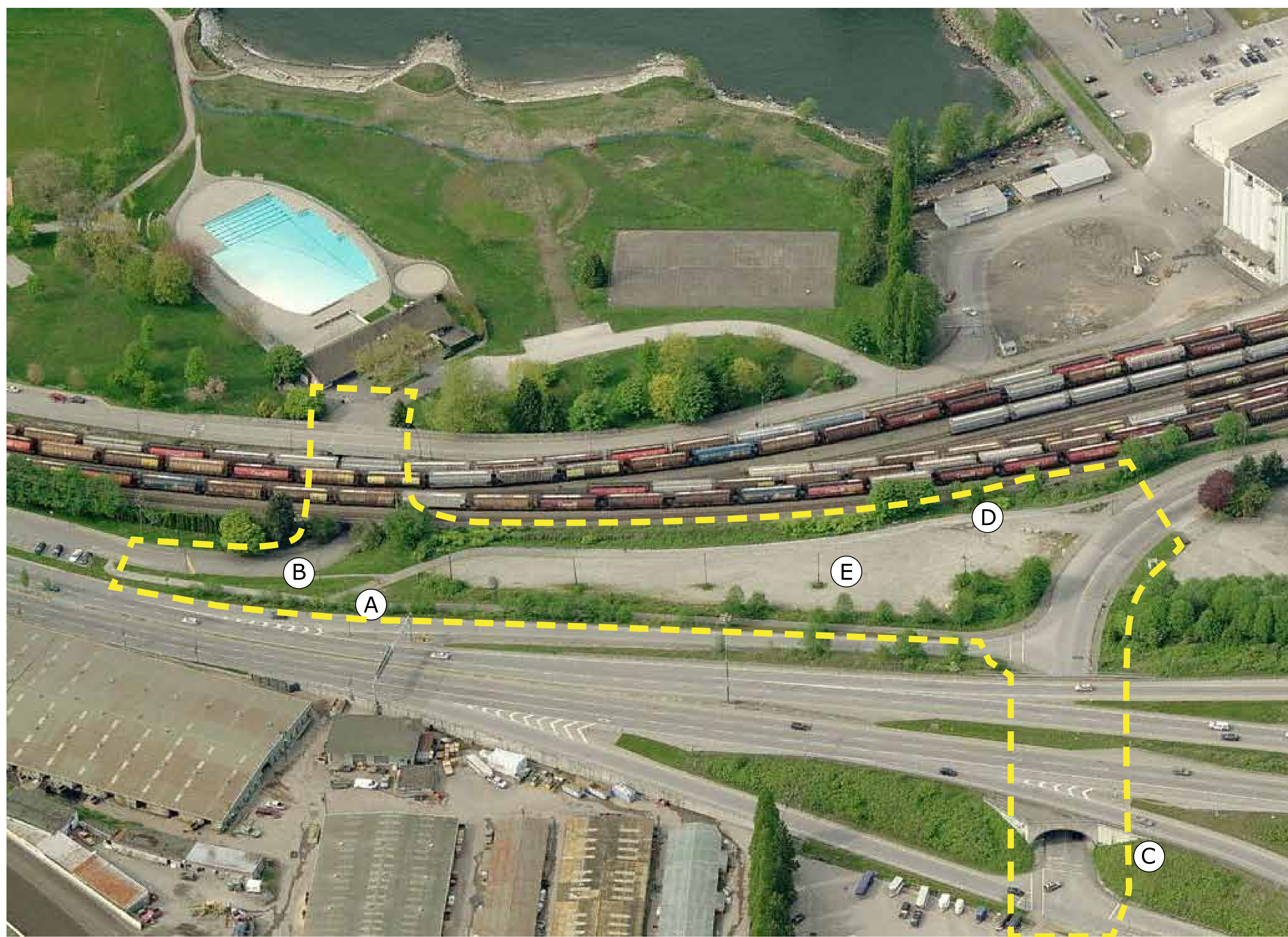
Constraints

There are a number of technical challenges that will impact park development, including:

- Uncertainty of a sustained water source for the creek;
- Fragmented and isolated nature of the park due to rail and road boundaries (noise);
- Variable fill material of unknown origin;
- Numerous underground utilities throughout the site.



A significant gas pipe line, several large stormwater and sanitary pipes, and water supply pipes are present below the surface.



Creekway Park from south



High voltage power line above ground present constraints to site development, such as path alignment and tree planting



Invasive plant species exist throughout the site and are currently growing over the bike trail



Challenging Connections



Steep topography presents a barrier to fish passage



The McGill tunnel presents a barrier between Creekway Park and Hastings Park