

From: **"Mochrie, Paul"** <Paul.Mochrie@vancouver.ca>
To: **"Direct to Mayor and Council - DL"**
Date: 4/4/2023 5:59:47 PM
Subject: Pine Street and West 1st Ave Link - Arbutus to Seaside
Attachments: ENG - Memo - Pine Street and West 1st Ave Link - Arbutus to Seaside.pdf

Dear Mayor and Council,

Please see the attached memo from Lon LaClaire on Pine Street and West 1st Ave Link - Arbutus to Seaside. A short summary of the memo is as follows:

This memo provides an update on the Pine St and West 1st Ave Link – northern extension of the Arbutus Greenway to the Seaside Greenway

which included significant community engagement, as well as the Sen̓ákw Services Agreement.

design.

Implementation is slated to begin in April 2023 and conclude by June 2023.

The use of quick build, low cost concrete barriers, will allow for adjustments to be made.

lon.laclaire@vancouver.ca.

Best,
Paul

Paul Mochrie (he/him)
City Manager
City of Vancouver
paul.mochrie@vancouver.ca



The City of Vancouver acknowledges that it is situated on the unceded traditional territories of the x̱məθḵʷəy̱əm (Musqueam), Sḵwx̱wú7mesh (Squamish), and səlilwətał (Tsleil-Waututh) Nations.

MEMORANDUM

March 31, 2023

TO: Mayor and Council

CC: Paul Mochrie, City Manager
Armin Amrolia, Deputy City Manager
Karen Levitt, Deputy City Manager
Maria Pontikis, Chief Communications Officer, CEC
Rosemary Hagiwara, Acting City Clerk
Teresa Jong, Administration Services Manager, City Manager's Office
Mellisa Morphy, Acting Chief of Staff, Mayor's Office
Trevor Ford, Director of Operations, Mayor's Office

FROM: Lon LaClaire
General Manager, Engineering Services

SUBJECT: Pine St & West 1st Ave Link: Arbutus to Seaside

RTS #: n/a

This memo provides an update on the **Pine St and West 1st Ave Link** – which is the first phase of the northern extension of the Arbutus Greenway to the Seaside Greenway. Implementation is scheduled for Spring 2023 and staff have been finalizing the interim design based on feedback from the community and area businesses.

Background

The Arbutus Greenway and Seaside Greenway are two of the most important active transportation routes in Vancouver. Extending the Arbutus Greenway to the Seaside Greenway will allow safe and comfortable walking and cycling connection for the wide variety of users who use them today, including families, seniors, and other people uncomfortable with riding in traffic. This connection was a priority in the Council-approved [Arbutus Greenway Implementation Strategy](#), which included significant community engagement, as well as the [Señákw Services Agreement](#). **Appendix A** provides a detailed overview of the planned changes.

Staff plan to implement a first phase of the connection this spring using interim materials (concrete barriers) to support safe and comfortable connections for all travel modes through the area. This will allow the City to learn from circulation changes and modify the measures, if

needed, before starting the final design. It will also support safer travel as the Señákw construction progresses and there are more construction vehicles using the streets in the area.

Community and Business Engagement

Staff have been consulting with area businesses and residents over the last two years:

- **Summer 2021** - Staff shared an initial concept and gathered feedback from businesses along the route through in-person visits and door knocking. At the same time, a notification letter was sent to inform nearby residents and businesses of the proposed greenway concept.
- **Spring 2022** - Staff shared detailed design of the project. The aim was to inform stakeholders of the project goals, design, timeline, and allow opportunities to give feedback and answer questions. Engagement techniques included door-knocking and individual meetings scheduled with businesses, notification letters, online information sessions, web page updates, and emails. Additional details about this engagement are provided in **Appendix B**.

How feedback has informed the design

Community members and many businesses were supportive of addressing the gap between the Seaside and Arbutus greenways by providing a protected facility for people cycling. There was also interest in the public realm improvements along the route, particularly between W 5th Ave and W 6th Ave. Staff noted concerns related to impacts to laneway access, parking and loading, and traffic circulation.

A small number of businesses shared specific feedback that staff have been addressing:

What we heard	How we incorporated feedback in the final design
<ul style="list-style-type: none"> • Concerns with proposed one-way vehicle circulation between W 6th Ave and W 5th Ave impacting operations because of cul-de-sac 	<ul style="list-style-type: none"> • Two-way vehicle circulation has been accommodated between W 6th Ave and W 5th Ave
<ul style="list-style-type: none"> • Loading needs from businesses on Pine St between W 3rd Ave and W 2nd Ave 	<ul style="list-style-type: none"> • Providing a half-block long loading zone on the east side of Pine St between W 3rd Ave and W 2nd Ave to improve service levels for larger truck deliveries.
<ul style="list-style-type: none"> • Metered parking is heavily used on W 1st Ave near Fir St, limiting access for delivery vehicles. 	<ul style="list-style-type: none"> • A new commercial loading zone has been provided on W 1st Ave near Fir St.

What we heard	How we are resolving prior to construction
<ul style="list-style-type: none"> Impact to laneway access between W 4th Ave and W 5th Ave for delivery trucks 	<ul style="list-style-type: none"> Staff are taking steps to ensure laneways remain clear and available for larger vehicle access, including resolving an existing obstruction prior to construction.
<ul style="list-style-type: none"> Need for loading along Pine St at W 5th Ave 	<ul style="list-style-type: none"> Working to provide additional loading along W 5^h Ave and coordinating with adjacent stakeholders to address operational needs.

The planned design for the greenway also includes the provision for decorative crosswalks across W 4th Avenue. Staff will be confirming with the proposed design, which matches the theme of the public space between W 5th Avenue and W 6th Avenue, with the Kitsilano Fourth Avenue BIA prior to implementation.

Next Steps

Implementation is slated to begin in April 2023 and conclude by June 2023. Staff will send notification letters to share details of the interim design with community and businesses (see **Appendix C**) and update the project website. This project is estimated to cost \$500,000, with 50% of the capital cost covered by TransLink.

Monitoring and assessment will follow implementation of this first phase of the project. The use of quick build, low cost concrete barriers, will allow for adjustments to be made and the interim design will inform the permanent build out of this greenway as laid out in the [Señákw Services Agreement](#).

Please contact me directly if you have any questions.

Sincerely,



Lon LaClaire, M.Eng., P.Eng.
 General Manager, Engineering Services
 604.873.7336 | lon.laclaire@vancouver.ca

Pine St & W 1st Ave Link

Arbutus Greenway to Seaside Greenway



Key Changes

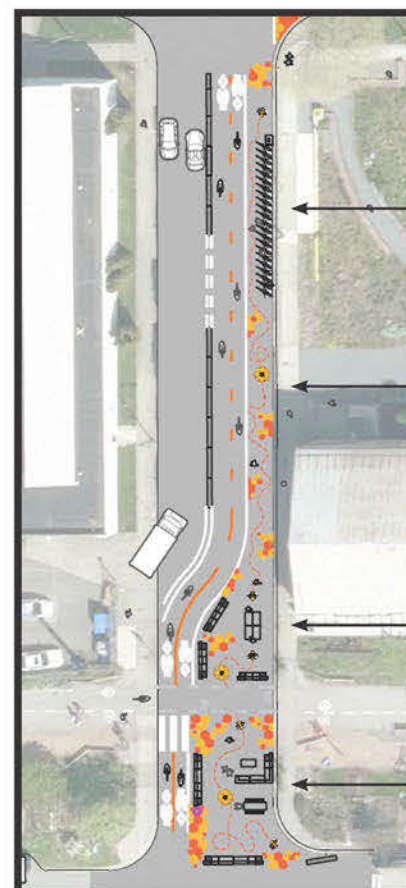
-  Protected two-way bike lane to be implemented along the route
-  Accessibility improvements for people walking with new curb ramps at W 1st Ave and Fir St
-  Vehicle access to businesses and homes maintained
-  Approximately half of all on-street vehicle parking spaces maintained
-  Pine St between W 3rd Ave and W 4th Ave to become one-way northbound
-  New public bike share locations
-  Pine St between W 4th Ave and W 5th Ave to become one-way southbound
-  Existing 'permit only' parking near W 1st Ave and Fir St to be relocated in close proximity
-  Loading provided along the route to serve businesses
-  New interim public space on Pine St between W 6th Ave and W 5th Ave



Summary

- The City of Vancouver is working to improve cycling connections between the Arbutus Greenway and Seaside Greenway (Seawall).
- The two walking and cycling routes are currently not connected, representing a significant gap in the City's active transportation network.
- The Pine St and W 1st Ave Link intends to address that gap in the network.
- A series of on-street changes will be implemented using interim materials (concrete barriers) on Pine St between W 6th Ave and W 1st Ave, and on W 1st Ave from Pine St to Creekside Dr.
- Our aim is to make a connection that is safe and comfortable for All Ages and Abilities (AAA) while accommodating access and loading arrangements for nearby businesses and residents.
- Implementation is scheduled for Spring/Summer 2023.

Interim Public Space



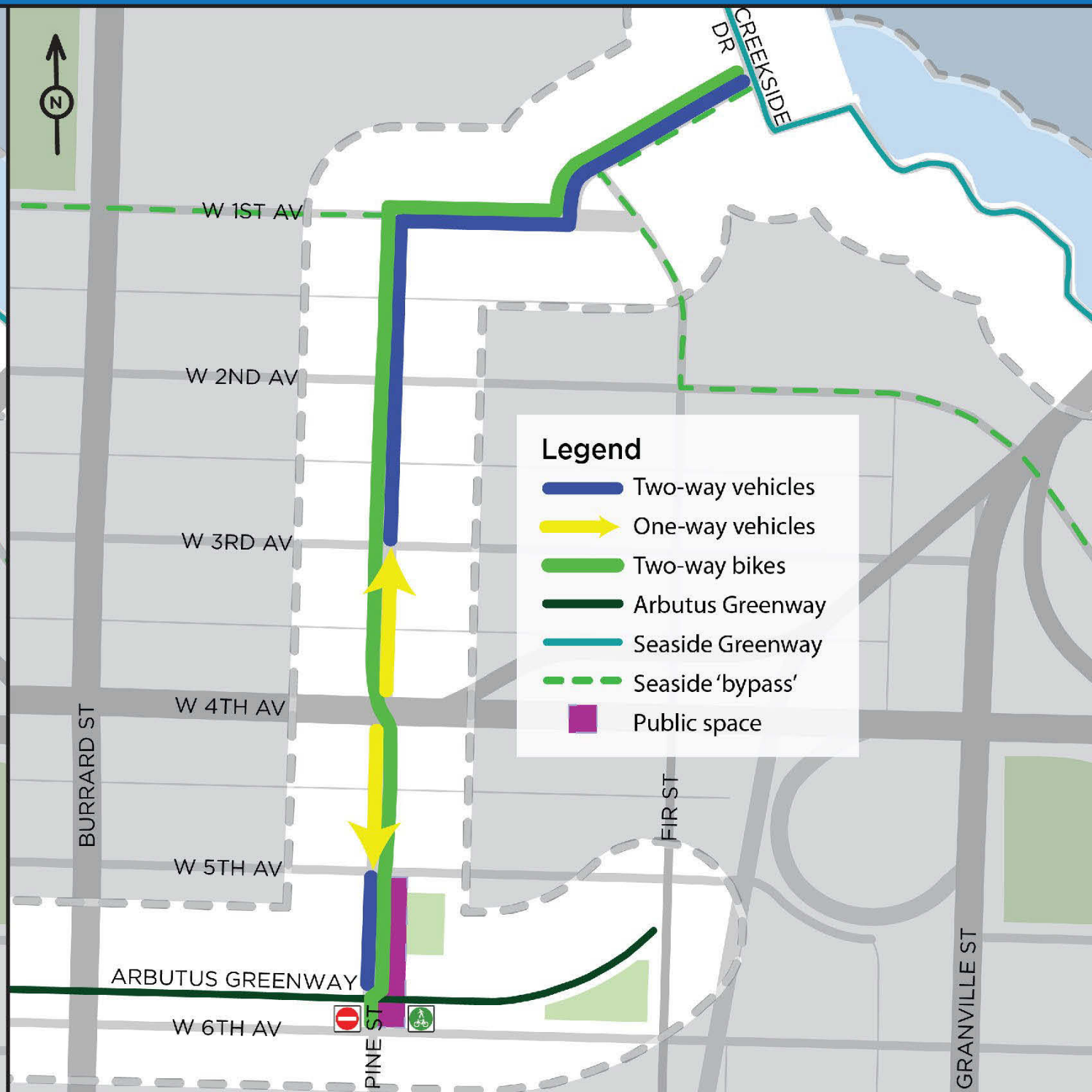
- Pine St between W 5th Ave and W 6th Ave
- Public bike share station
- Easy access to pollinator garden
- Places to play, for all ages
- Places to sit, socialize and rest

* Illustrations for discussion purposes only *

STREET LAYOUT

Existing

Upcoming



Appendix B – Spring 2022 Engagement Statistics and Findings

- **Door knocking:** Staff reached out to 20 businesses. At the request of some businesses, individual meetings were held to better address their feedback.
- **Notification letter:** 391 letters were sent to residents and businesses within a half block along Pine St between W 6th Ave and W 1st Ave and along W 1st Ave between Pine St and Creekside Dr.
- **Information sessions:** Two online sessions were held to provide policy and design overview, enable discussions, and answer questions regarding the project.
- **Webpage:** A webpage was developed which provided the project plan along with other relevant information
- **Emails:** 28 emails were sent to businesses fronting the route informing them of the project.

What we heard

Businesses and residents had similar feedback regarding their concerns or commendations for the connection. Most feedback focused on access and parking along Pine St.

Top Three Concerns

- **Access to laneway:** Some residents and businesses were concerned about laneway access between W 4th Ave and W 5th Ave. In particular, concerns with larger vehicle circulation and potential conflict with road users, such as cyclists, were raised.
- **Parking and loading:** Some residents and businesses expressed concerns with the removal of some parking spaces along Pine St.
- **Traffic circulation:** Some residents and businesses raised concerns about the proposed one-way southbound between W 4th Ave and W 5th Ave and the one-way northbound between W 4th Ave and W 3rd Ave. The proposed design utilizes these one-ways to mitigate the number of vehicle and cyclists conflicts that may occur, and retains current signal operations.

Top Three Recommendations

- **High cycling activity:** Many businesses recognized the high volume of people cycling along this section of Pine St.
- **Addressing the gap:** There was community understanding that providing cycling facilities on Pine St addresses the gap between the Arbutus Greenway and Seaside Greenway (Seawall).
- **Public realm improvements:** Some community members are looking forward to the public realm improvements happening along the proposed bike lane, in particular the public space between W 5th Ave and W 6th Ave.

Appendix C – Notification Letter



Engineering Services
Transportation Division
Transportation Design

IMPORTANT INFORMATION

Please have this translated

RENSEIGNEMENTS IMPORTANTS

Prière de les faire traduire

重要資訊 請找人為你翻譯

重要资讯 请找人为你翻译

MAHALAGANG KAALAMAN

Mangyaring isalin ito

ਜ਼ਰੂਰੀ ਜਾਣਕਾਰੀ

ਕਿਰਪਾ ਕਰਕੇ ਕਿਸੇ ਕੋਲੋਂ ਇਸ ਦਾ ਉਲਥਾ ਕਰਵਾਓ

TIN TỨC QUAN TRỌNG

Xin hãy dịch sang tiếng Việt

INFORMACIÓN IMPORTANTE

Busque a alguien que le traduzca

중요정보 번역해주세요

اطلاعات مهم لطفاً درخواست کنید
این اطلاعات را برای شما ترجمه کنند

March 31, 2023

Dear Residents and Business owners:

RE: Pine St and W 1st Ave Link – Connecting the Arbutus and Seaside greenways

Over the last two years, we have been collecting feedback from businesses and community members on the Pine St and W 1st Ave Link project – which is the first phase of the northern extension of the Arbutus Greenway to the Seaside Greenway.

Implementation is scheduled for **Spring 2023 (mid-April to June)** and staff have been finalizing the interim design (see attachment for details) based on feedback from the community and area businesses.

Background

The Arbutus Greenway and Seaside Greenway are two of the most important active transportation routes in Vancouver. Extending the Arbutus Greenway along Pine St to the Seaside Greenway, which has been identified in several Council-approved plans such as the Arbutus Greenway Implementation Strategy and Vancouver Plan, will create a safe and comfortable walking and cycling connection for the wide variety of users who use them today.

As the link uses existing road space on Pine St, staff have been refining the design to accommodate access and loading for nearby businesses and residents. Thank you to those who connected with staff by email, in person conversations and online information sessions.

Concerns raised to staff related to impacts to laneway access, parking and loading, and traffic circulation. A number of adjustments have been made to the greenway design in response to these concerns, where possible, while balancing the need for a safe and comfortable walking and cycling connection.

Appendix C – Notification Letter

What is planned?

A series of on-street changes will be implemented on **Pine St between W 6th Ave and W 1st Ave, and on W 1st Ave from Pine St to Creekside Dr** (see attachment for details). Construction specific notifications will be provided to adjacent residents and businesses as implementation progresses. The changes will be implemented using interim materials (concrete barriers) and staff will monitor and adjust as needed.

For more information on the project, please visit our webpage: vancouver.ca/pine-street or email us if you have questions at bikeupgrades@vancouver.ca

Sincerely,

Transportation Design Branch
Engineering Services, City of Vancouver