

Legend

Notes

- THE DESIGN OF THE PARKING STRUCTURE REGARDING SAFETY AND SECURITY SHALL BE IN ACCORDANCE WITH SECTION 4.13 OF THE PARTNERSHIP LAW.
- A PLAN OF THE ELECTRICAL RESISTANCE SHALL BE PROVIDED FOR EACH AND EVERY GARAGE SPACE.
- ALL GARAGE SPACES SHALL BE PROVIDED WITH FIRE RATED SECURITY MEASURES SHALL BE IN ACCORDANCE WITH THE RELEVANT PROVISIONS OF SECTION 8 OF THE PARTNERSHIP LAW.
- MECHANICAL EQUIPMENT (VENTILATORS, GENERATORS AND STORAGE) SHALL BE LOCATED TO MINIMIZE NOISE IMPACTS ON THE NEIGHBOURHOOD AND COMPLY WITH NOISE BY-LAW 8555.
- ALL PROPOSED VEHICLES, SETBACKS AND BUILDING DIMENSIONS ARE MEASURED TO THE OUTSIDE OF CLADDING.
- THE ACoustical MEASURES WILL BE INCORPORATED INTO THE FINAL DESIGN, BASED ON THE CONSULTANT'S RECOMMENDATIONS.
- ALL DIMENSIONS SHOWN ARE FOR REFERENCE ONLY AND IS NOT REGULATED BY THE BC BY-LAW AND REQUIRES SEPARATE PERMITS. THE DIMENSIONS SHOWN ARE SUBJECT TO CHANGE AND SHALL BE VERIFIED BY THE OWNER AND OBTAIN THE NECESSARY PERMITS.



Issue / Revision	By	Date	App'd
1	ESSEZ/SSP/PS	2023.03.27	By: [Signature]

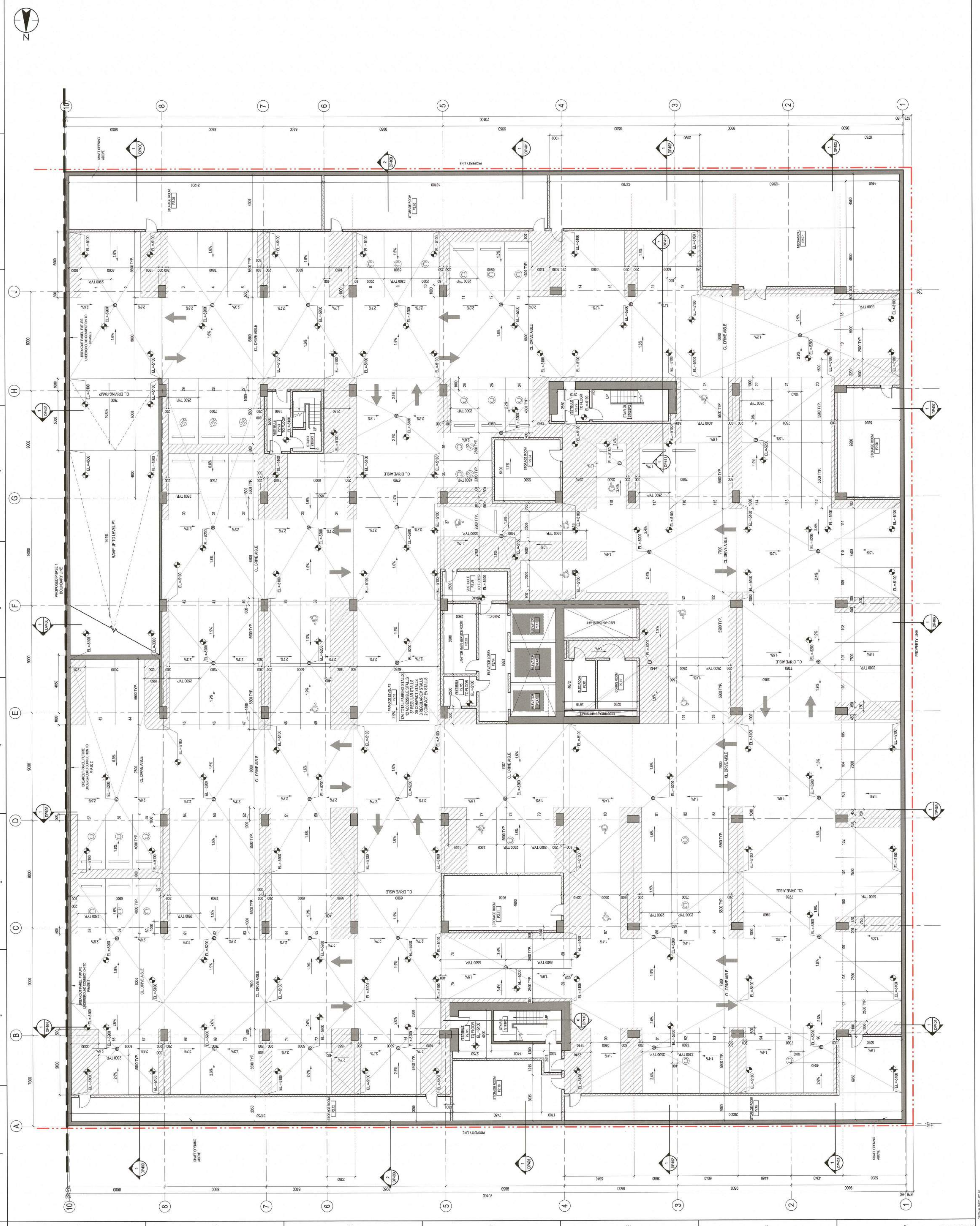


Client/Project
 Vancouver Community College
 Centre for Clean Energy and
 Automotive Innovation (CCEAI)
 1111 E 7th Ave
 Vancouver BC

Title
 FLOOR PLAN - LEVEL P2

Project No.
 144321150
 Scale
 1:100
 Revision
 Drawing No.
 1

DP100





Stantec Architecture Ltd
Vancouver, BC V6B 4A3
Tel: (604) 681-0000 / Fax: (604) 681-8100
www.stantec.com

Copyright Reserved
The design and drawings are the property of Stantec Architecture Ltd. No part of this drawing may be reproduced or transmitted in any form or by any means electronic, mechanical, photocopying, recording, or by any information storage and retrieval system without the prior written permission of Stantec Architecture Ltd.

Consultants

Legend

Notes

- THE DESIGN OF THE PARKING STRUCTURE REGARDING SAFETY AND SECURITY SHALL BE IN ACCORDANCE WITH SECTION 13.0 OF THE PARKING BY-LAW.
- A MINIMUM OF ONE ELECTRICAL RECEPTACLE SHALL BE PROVIDED FOR EACH TWO CLASS A BICYCLE SPACES.
- THE DESIGN OF BICYCLE SPACES INCLUDING BICYCLE ROOMS, COMPACTORS, LOCKERS AND/OR RACKS REGARDING SAFETY AND SECURITY SHALL BE IN ACCORDANCE WITH SECTION 13.0 OF THE PARKING BY-LAW.
- MECHANICAL EQUIPMENT (VERTICALS, GENERATORS, COMPACTORS, AND EXHAUST SYSTEMS) SHALL BE DESIGNED AND LOCATED TO MINIMIZE NOISE IMPACTS ON THE NEIGHBOURHOOD AND COMPATIBLE WITH USE OF CARPAGES.
- ALL MECHANICAL EQUIPMENT SHALL BE PROTECTED FROM ACCESS TO THE CURB SIDE OF CLADDING.
- THE ARCHITECTURAL MASSING SHALL BE INCORPORATED INTO THE FINAL DESIGN BASED ON THE CONSULTANT'S RECOMMENDATIONS.
- ALL SIGNAGE SHOWN IS FOR REFERENCE ONLY AND IS NOT APPROVED UNDER THIS DEVELOPMENT PERMIT. SIGNAGE IS REGULATED BY THE SIGN BY-LAW AND REQUIRES SEPARATE APPROVAL FROM THE CITY OF VANCOUVER. ALL SIGNAGE SHALL COMPLY WITH THE SIGN BY-LAW AND OBTAIN THE REQUIRED PERMITS.



Issue / Revision	By	Date
1. ISSUED FOR PERMIT	BY: [Signature]	2023.03.27
2. [REVISION]	BY: [Signature]	2023.03.27
3. [REVISION]	BY: [Signature]	2023.03.27
4. [REVISION]	BY: [Signature]	2023.03.27
5. [REVISION]	BY: [Signature]	2023.03.27
6. [REVISION]	BY: [Signature]	2023.03.27
7. [REVISION]	BY: [Signature]	2023.03.27
8. [REVISION]	BY: [Signature]	2023.03.27
9. [REVISION]	BY: [Signature]	2023.03.27
10. [REVISION]	BY: [Signature]	2023.03.27



Client/Project
 Vancouver Community College
 Centre for Clean Energy and
 Automotive Innovation (CCEAI)
 1111 E 7th Ave
 Vancouver BC

Title
 FLOOR PLAN - AUTOMOTIVE MEZZANINE LEVEL

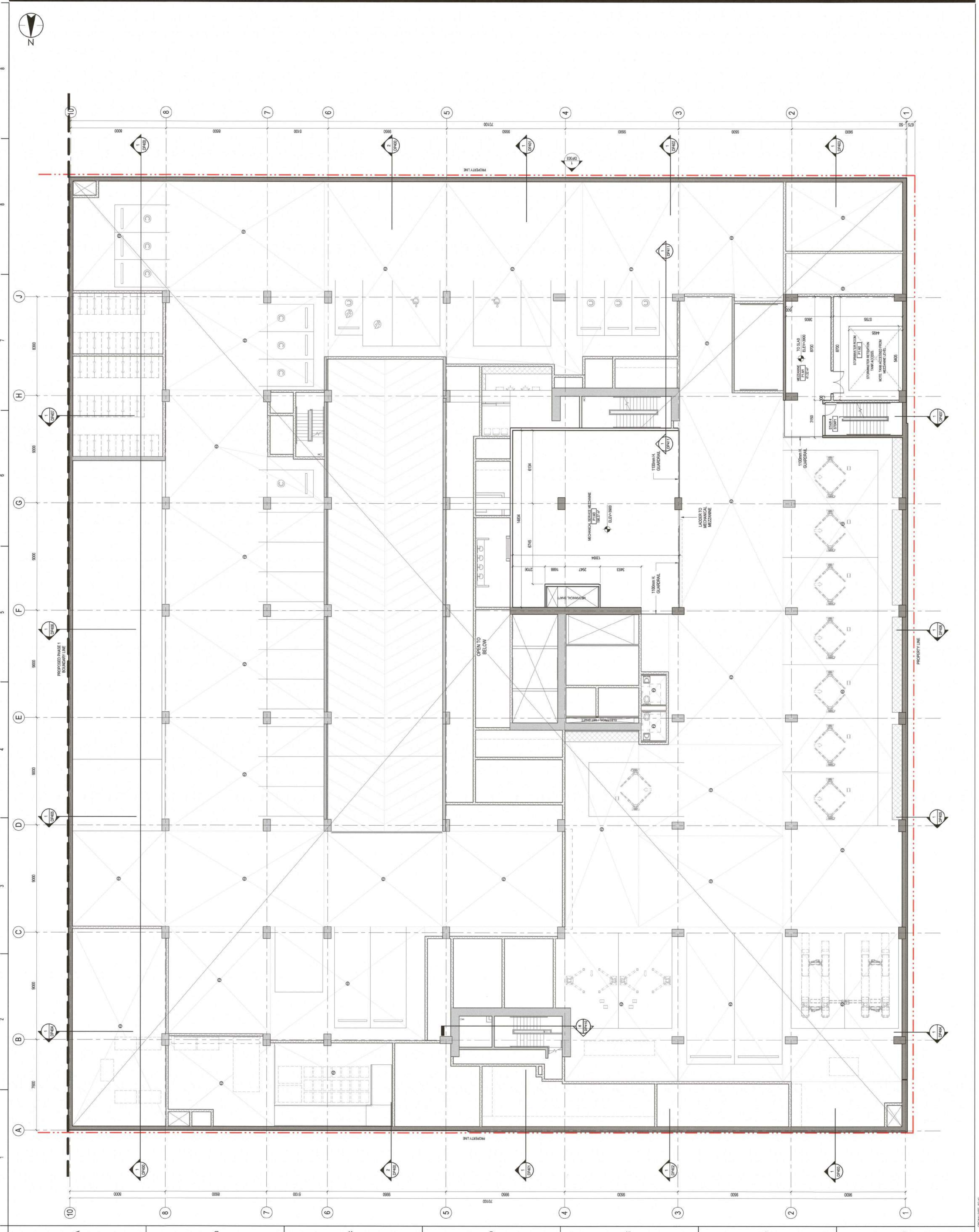
Project No.
 144321150

Scale
 1:100

Revision
 1

Appendix D. Plans and Elevations

DP102



- NOTES**
- THE DESIGN OF THE PARKING STRUCTURE REGARDING SAFETY AND ACCESSIBILITY SHALL BE IN ACCORDANCE WITH SECTION 4.13 OF THE BC BUILDING ACT AND THE BC BUILDING REGULATIONS.
 - A MINIMUM OF ONE ELECTRICAL RECEPTACLE SHALL BE PROVIDED FOR EACH TWO CLASS B BIKE SPACES.
 - THE DESIGN OF BIKE SPACES INCLUDING BIKE ROOMS, COMPACTORS, LOCKERS AND RACKS REGARDING SAFETY AND ACCESSIBILITY SHALL BE IN ACCORDANCE WITH SECTION 4.13 OF THE BC BUILDING ACT AND THE BC BUILDING REGULATIONS.
 - METALLIC EQUIPMENT MUST BE PROTECTED AGAINST CORROSION AND SHALL BE LOCATED OUTSIDE OF THE BIKE ROOMS AND LOCATED TO MINIMIZE IMPACTS ON THE NEIGHBOURHOOD AND COMPLY WITH NOISE BY-LAW 1655.
 - ALL PROPOSED WIRING, SETBACKS AND BUILDING DIMENSIONS ARE REFERRED TO THE SOURCE OF RECORD.
 - ALL DIMENSIONS ARE TO FACE UNLESS OTHERWISE NOTED.
 - FINAL DESIGN SHALL BE BASED ON THE CONSULTANTS' RECOMMENDATIONS AND SHALL BE APPROVED BY THE CITY OF VANCOUVER AND THE BC BUILDING DEPARTMENT.
 - ALL DIMENSIONS ARE TO FACE UNLESS OTHERWISE NOTED.
 - FINAL DESIGN SHALL BE BASED ON THE CONSULTANTS' RECOMMENDATIONS AND SHALL BE APPROVED BY THE CITY OF VANCOUVER AND THE BC BUILDING DEPARTMENT.

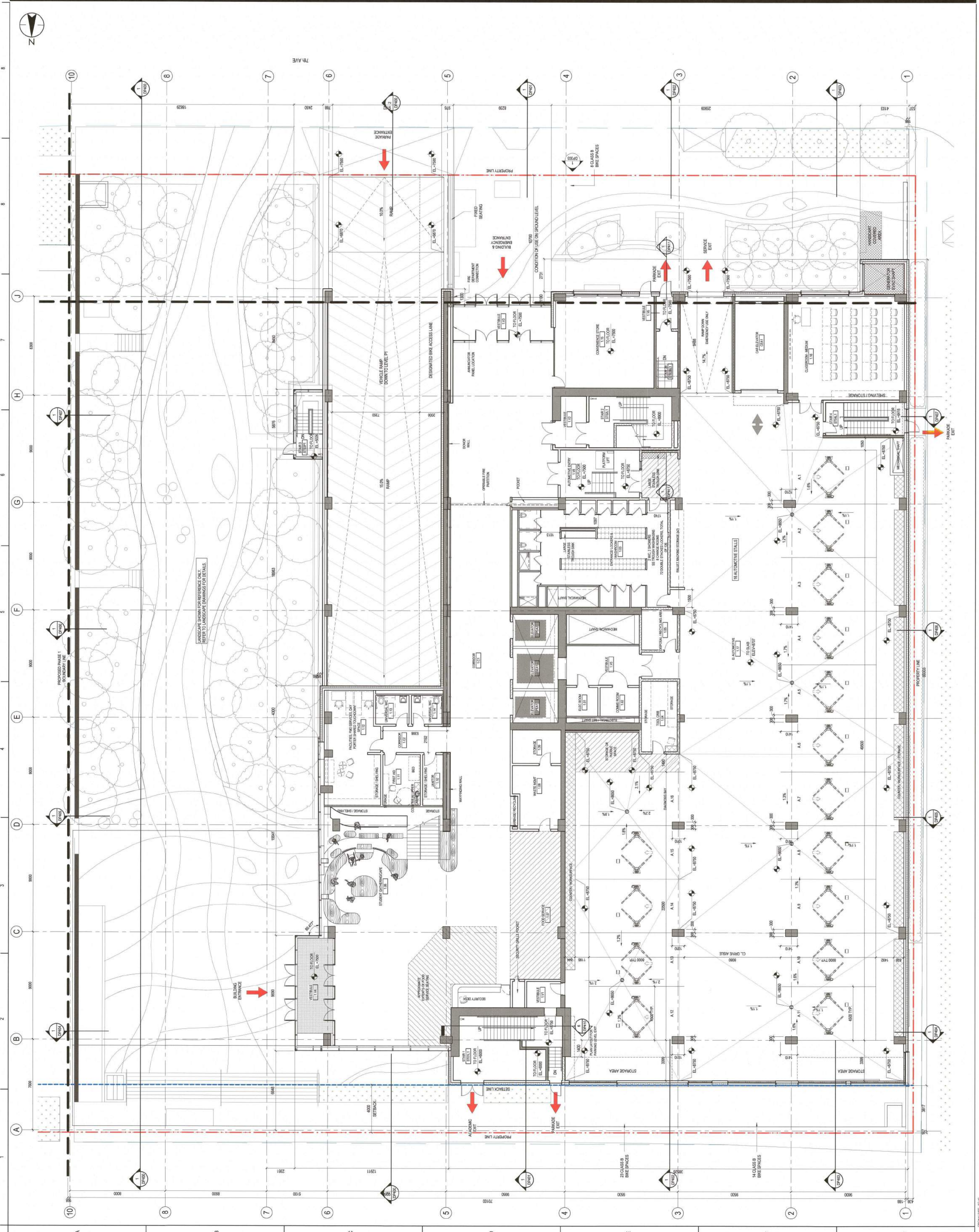


Issue / Revision	By	App'd	Date
1	EL	2023.01.27	
2	EL	2023.01.27	



Client/Project
Vancouver Community College
 Centre for Clean Energy and
 Automotive Innovation (CCEAI)
 1111 E 7th Ave
 Vancouver, BC
 V6C 2K6

Project No.
14432150
 Scale
1:100
 Drawing No.
1



Legend

Notes

- THE DESIGN OF THE PARKING STRUCTURE REGARDING SAFETY AND SECURITY SHALL BE IN ACCORDANCE WITH SECTION 4.13 OF THE PARTNER PLAN.
- A MINIMUM OF ONE ELECTRICAL RECEPTACLE SHALL BE PROVIDED FOR EACH TWO SQUARE METERS OF FLOOR AREA.
- ALL ELECTRICAL RECEPTACLES SHALL BE PROVIDED WITH GROUNDING AND PROTECTIVE DEVICES.
- COMPANION SEATING SHALL BE PROVIDED IN ACCORDANCE WITH THE RELEVANT PROVISIONS OF SECTION 6.15 OF THE PARTNER PLAN.
- MECHANICAL EQUIPMENT (VENTILATORS, GENERATORS, AND UNITS) SHALL BE LOCALED TO MINIMIZE NOISE IMPACTS ON THE NEIGHBOURHOOD AND COMPLY WITH NOISE BY-LAW 18556.
- ALL PROPOSED YARDS, SETBACKS AND BUILDING DIMENSIONS ARE MEASURED TO THE OUTSIDE OF CLADDING.
- THE ACoustical MEASURES WILL BE INCORPORATED INTO THE FINAL DESIGN, BASED ON THE CONSULTANT'S RECOMMENDATIONS.
- ALL STORAGE SHOWN IS FOR REFERENCE ONLY AND IS NOT REGULATED BY THE BC BY-LAW AND REQUIRES SEPARATE PERMITS. THE OWNER'S ASSUMES RESPONSIBILITY TO OBTAIN ALL NECESSARY PERMITS AND APPROVALS WITH THE SIGN OFF AND OBTAIN THE REQUIRED PERMITS.



Issue / Revision	By	Date
1. ISSUE FOR PERMIT	BY: [Signature]	2023.03.27
2. REVISED FOR PERMIT	BY: [Signature]	2023.03.27

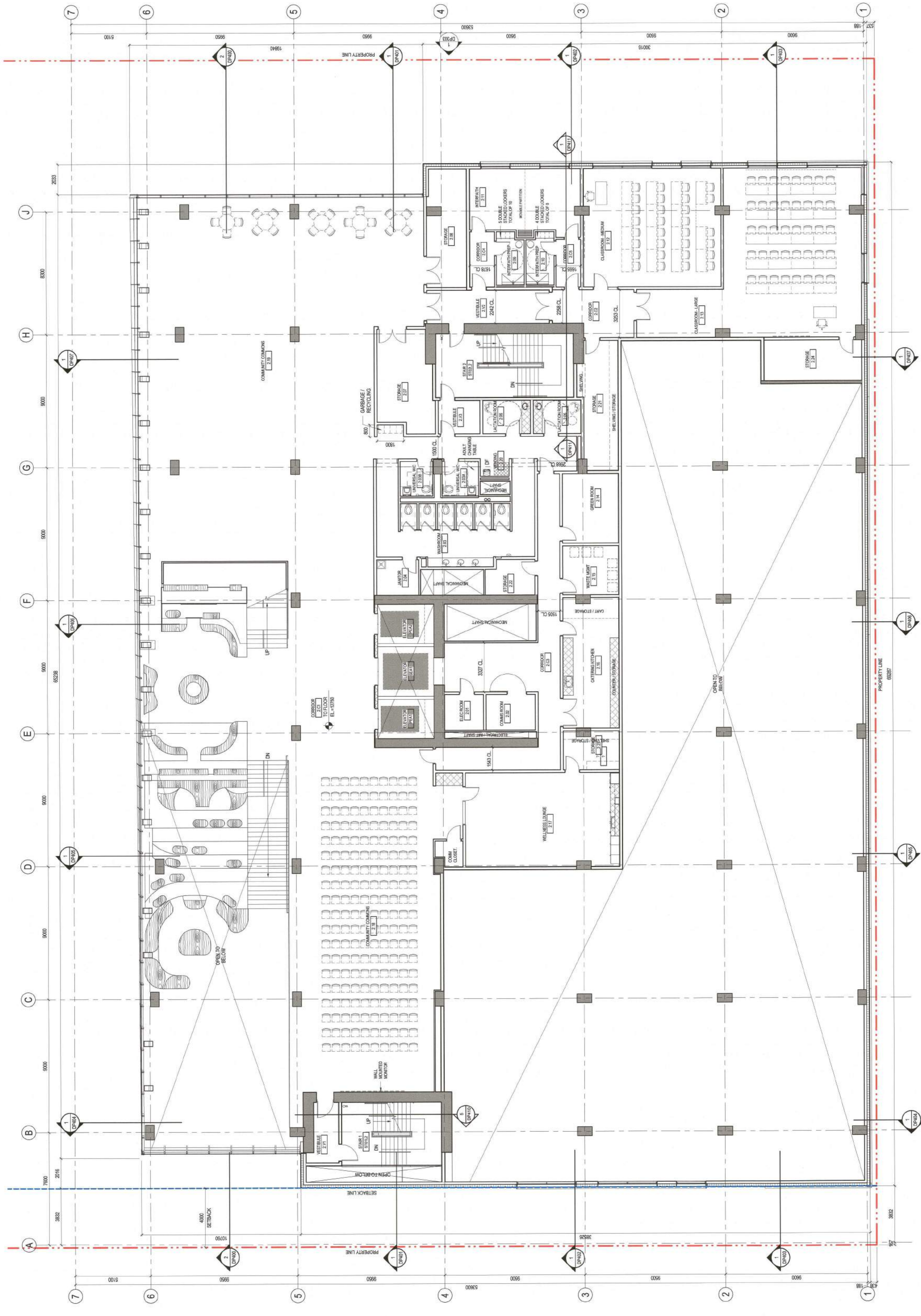


Client/Project
 Vancouver Community College
 Centre for Clean Energy and
 Automotive Innovation (CCEAI)
 1111 E 7th Ave
 Vancouver BC

Title
 FLOOR PLAN - LEVEL 2

Project No.
 144321150
 Scale
 1:100
 Revision
 1

Appendix D. Plans and Elevations
 DP104





Stantec Architecture Ltd
Vancouver, BC V6B 6A3
Tel: (604) 693-8867 / Fax: (604) 694-8100
www.stantec.com

Copyright Reserved
This drawing is the property of Stantec Architecture Ltd. It is to be used only for the project and site for which it was prepared. It is not to be reproduced, stored in a retrieval system, or transmitted in any form or by any means, electronic, mechanical, photocopying, recording, or by any information storage and retrieval system, without the prior written permission of Stantec Architecture Ltd.

Consultants

Legend

Notes

- THE DESIGN OF THE PARKING STRUCTURE REGARDING SAFETY AND THE INCORPORATION WITH SECTION 13 OF THE PARKING BY-LAW.
- A MINIMUM OF ONE ELECTRICAL RECEPTACLE SHALL BE PROVIDED FOR EACH TWO CLASS A BICYCLE SPACES.
- THE DESIGN OF BICYCLE SPACES INCLUDING BICYCLE ROOMS, COMPACTORS, LOCKERS AND RACKS REGARDING SAFETY AND RELEVANT PROVISIONS OF SECTION 13 OF THE PARKING BY-LAW.
- MECHANICAL EQUIPMENT VENTILATORS, GENERATORS, COMPACTORS, AND EXHAUST SYSTEMS SHALL BE DESIGNED AND SITED TO MINIMIZE VISUAL IMPACTS ON THE NEIGHBOURHOOD AND TO MINIMIZE SOUND AND VIBRATION LEVELS AS MEASURED TO THE OUTSIDE OF CLADDING.
- ALL PROPOSED WATER SERVICES AND SANITARY DIMENSIONS ARE TO BE CONFIRMED BY THE CONSULTANT'S RECOMMENDATIONS.
- THE ARCHITECTURAL MEASURES SHALL BE INCORPORATED INTO THE FINAL DESIGN BASED ON THE CONSULTANT'S RECOMMENDATIONS.
- ALL STORAGE SHOWN FOR REFERENCE ONLY AND IS NOT APPROVED UNDER THIS DEVELOPMENT PERMIT. STORAGE IS APPROVED UNDER THE PERMIT BY-LAW AND ASSASSINATED BY THE APPROVALS. THE APPROVALS SHALL BE ASSASSINATED TO COMPLY WITH THE SIGN BY-LAW AND OBTAIN THE REQUIRED PERMITS.



Issue / Revision	By	App'd	Date
1	ESSE/CEP	EL	2023.07.27
		BY	2023.07.27

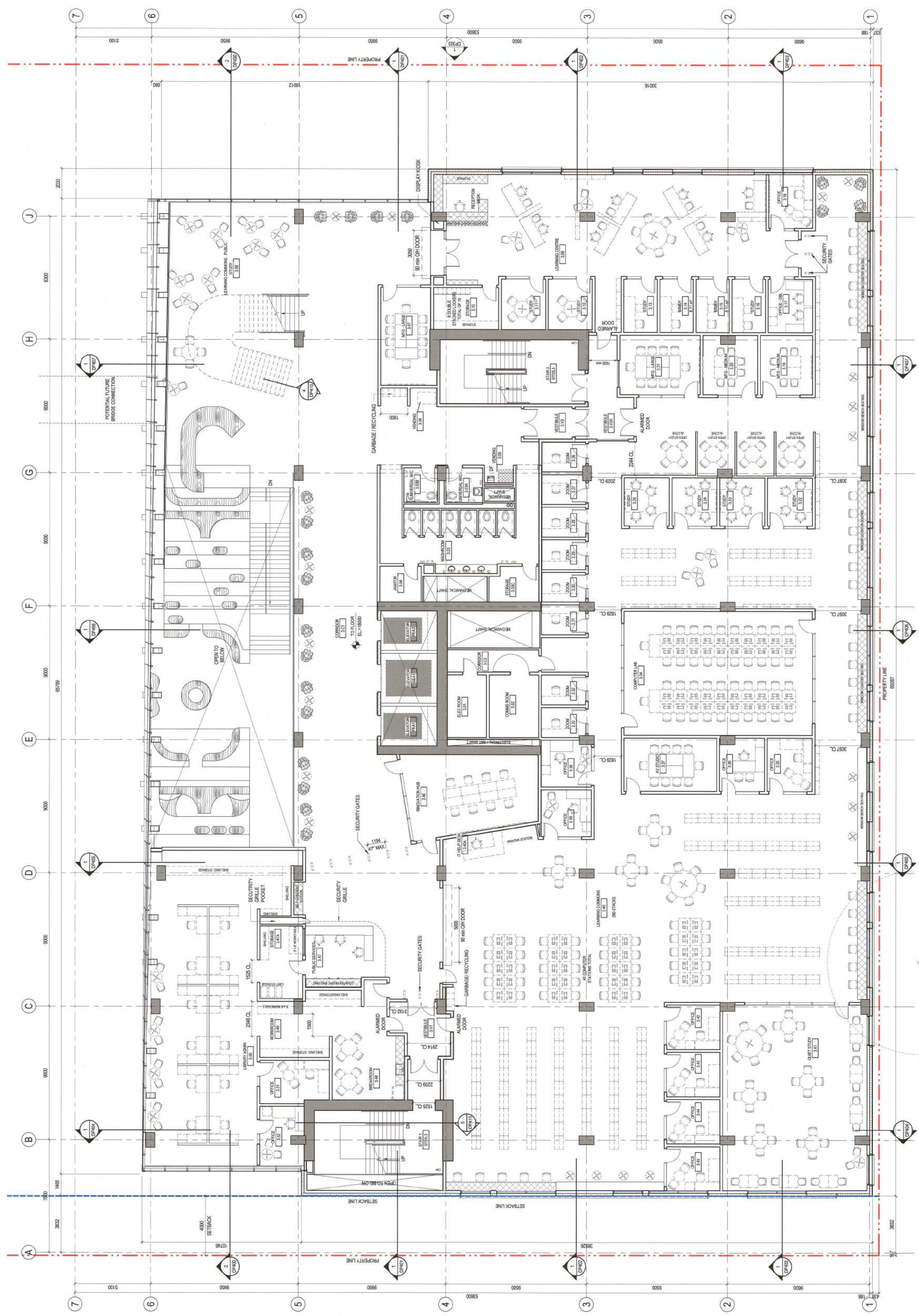


Client/Project
Vancouver Community College
Centre for Clean Energy and
Automotive Innovation (CCEA)
1111 E 7th Ave
Vancouver BC

Title
FLOOR PLAN - LEVEL 3

Project No.
14621150
Scale
1:100
Revision
Drawing No.
1

DP105



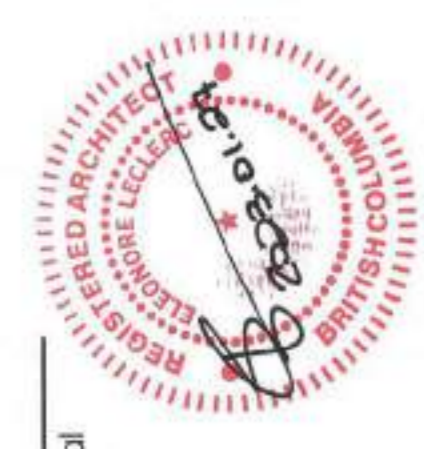
GRID LINE TRANSFORMED BY SET TRANSFORM

Legend

- NOTES
- THE DESIGN OF THE PARKING STRUCTURE REGARDING SAFETY AND SECURITY SHALL BE IN ACCORDANCE WITH SECTION 4.13 OF THE BC BUILDING ACT AND THE BC BUILDING REGULATIONS.
 - A MINIMUM OF ONE ELECTRICAL RECEPTACLE SHALL BE PROVIDED FOR EACH TWO CLASS A BICYCLE SPACES.
 - THE DESIGN OF BICYCLE SPACES INCLUDING BICYCLE ROOMS, COMPOUNDS, LOCKERS AND RACKS REGARDING SAFETY AND SECURITY MEASURES SHALL BE IN ACCORDANCE WITH THE BC BUILDING ACT AND THE BC BUILDING REGULATIONS.
 - MECHANICAL AND EXHAUST SYSTEMS WILL BE DESIGNED AND LOCATED TO MINIMIZE NOISE IMPACTS ON THE NEIGHBOURHOOD AND COMPLY WITH NOISE BY-LAW 8655.
 - ALL PROPOSED YARDS, SETBACKS AND BUILDING DIMENSIONS ARE REFERRED TO THE CO-USE OF ZONING.
 - THE ACoustical MEASURES WILL BE INCORPORATED INTO THE FINAL DESIGN BASED ON THE CONSULTANT'S RECOMMENDATIONS.
 - THIS DESIGN IS FOR INFORMATION ONLY AND IS NOT TO BE APPROVED UNDER THIS DEVELOPMENT PERMIT. APPROVAL IS REGULATED BY THE BC BUILDING ACT AND REQUIRED SEPARATE COMPLIANCE WITH THE BC BUILDING ACT AND OBTAIN THE REQUIRED PERMITS.



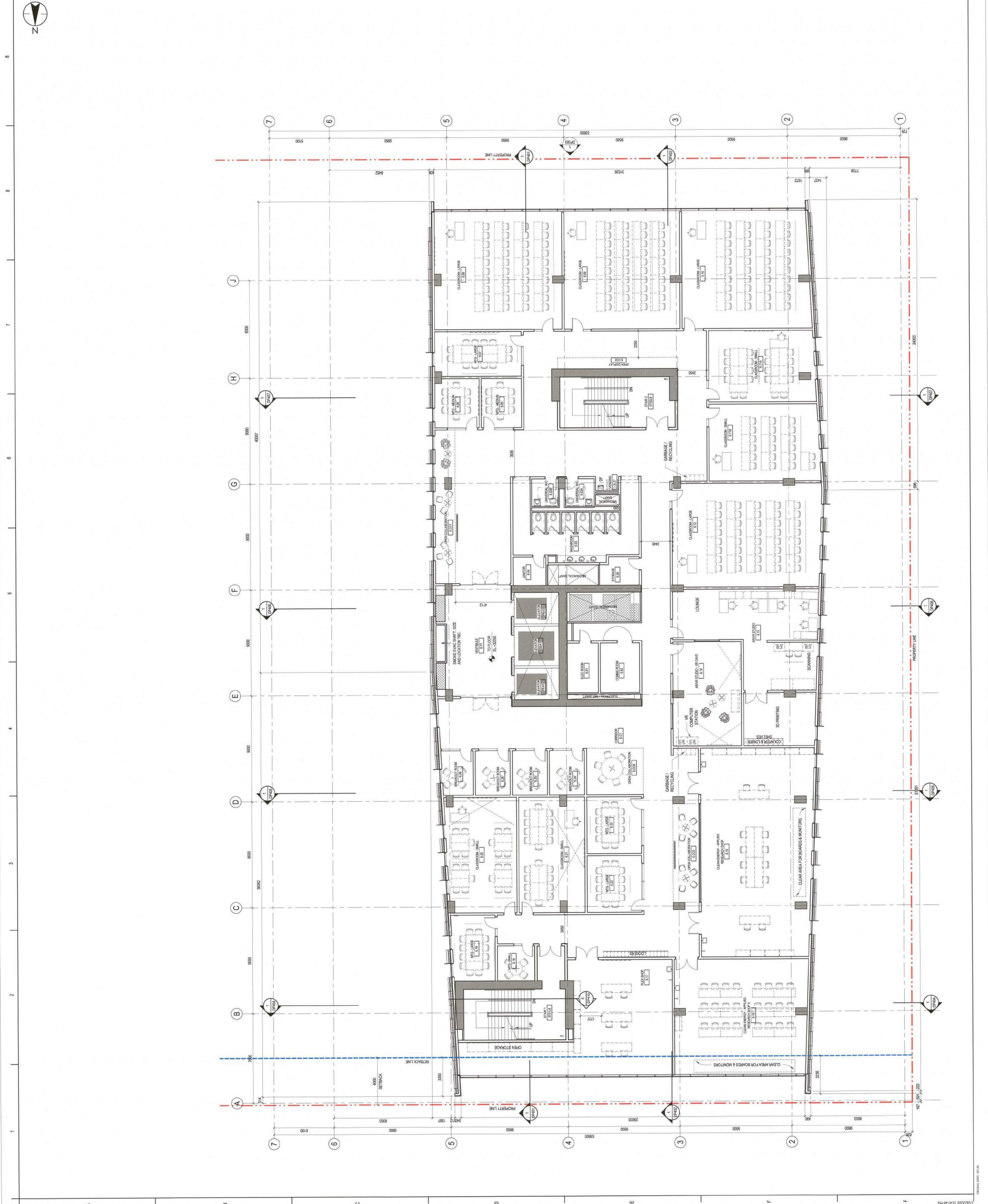
Issue / Revision	By	DL	EL	2023.03.27
1. ISSUE FOR PERMIT	APR	2023.03.27		



Client/Project
 Vancouver Community College
 Centre for Clean Energy and
 Automotive Innovation (CCEAI)
 1111 E 7th Ave
 Vancouver BC

Title
 FLOOR PLAN - LEVEL 6

Appendix D. Plans and Elevations
 Project No. 144321150
 Scale 1:100
 Revision Drawing No. 1
DP108





Stantec Architecture Ltd
 Vancouver, BC V6S 8A3
 Tel: (604) 683-8000 / Fax: (604) 683-8100
 www.stantec.com

Copyright Reserved
 This drawing is the property of Stantec Architecture Ltd. It is to be used for the project and location only. No part of this drawing may be reproduced or transmitted in any form or by any means, electronic, mechanical, photocopying, recording, or by any information storage and retrieval system, without the prior written permission of Stantec Architecture Ltd.

Consultants

Legend

- Notes**
- THE DESIGN OF THE PARKING STRUCTURE REGARDING SAFETY AND COMPLIANCE WITH SECTION 13 OF THE PARKING BY-LAW.
 - A MINIMUM OF ONE ELECTRICAL RECEPTACLE SHALL BE PROVIDED FOR EACH TWO CLASS A BICYCLE SPACES.
 - THE DESIGN OF BICYCLE SPACES INCLUDING BICYCLE ROOMS, COMPACTS, LOCKERS AND/OR RACKS REGARDING SAFETY AND COMPLIANCE WITH SECTION 13 OF THE PARKING BY-LAW.
 - MECHANICAL EQUIPMENT (VENTILATORS, GENERATORS, COMPACTORS, AND EXHAUST SYSTEMS) WILL BE DESIGNED AND LOCATED TO MINIMIZE NOISE IMPACTS ON THE NEIGHBOURHOOD AND COMPATIBLE WITH USE BY LAW.
 - ALL SPECIAL USES SHALL BE INCORPORATED INTO THE FINAL DESIGN BASED ON THE CONSULTANTS' RECOMMENDATIONS.
 - ALL SOURCE DRAWING FOR REFERENCE ONLY AND IS NOT APPROVED UNDER THIS DEVELOPMENT PERMIT. SIGNAGE IS REGULATED BY THE SIGN BY-LAW AND REQUIRES SEPARATE APPROVAL. ALL SIGNAGE SHALL BE DESIGNED TO COMPLY WITH THE SIGN BY-LAW AND OBTAIN THE REQUIRED PERMITS.



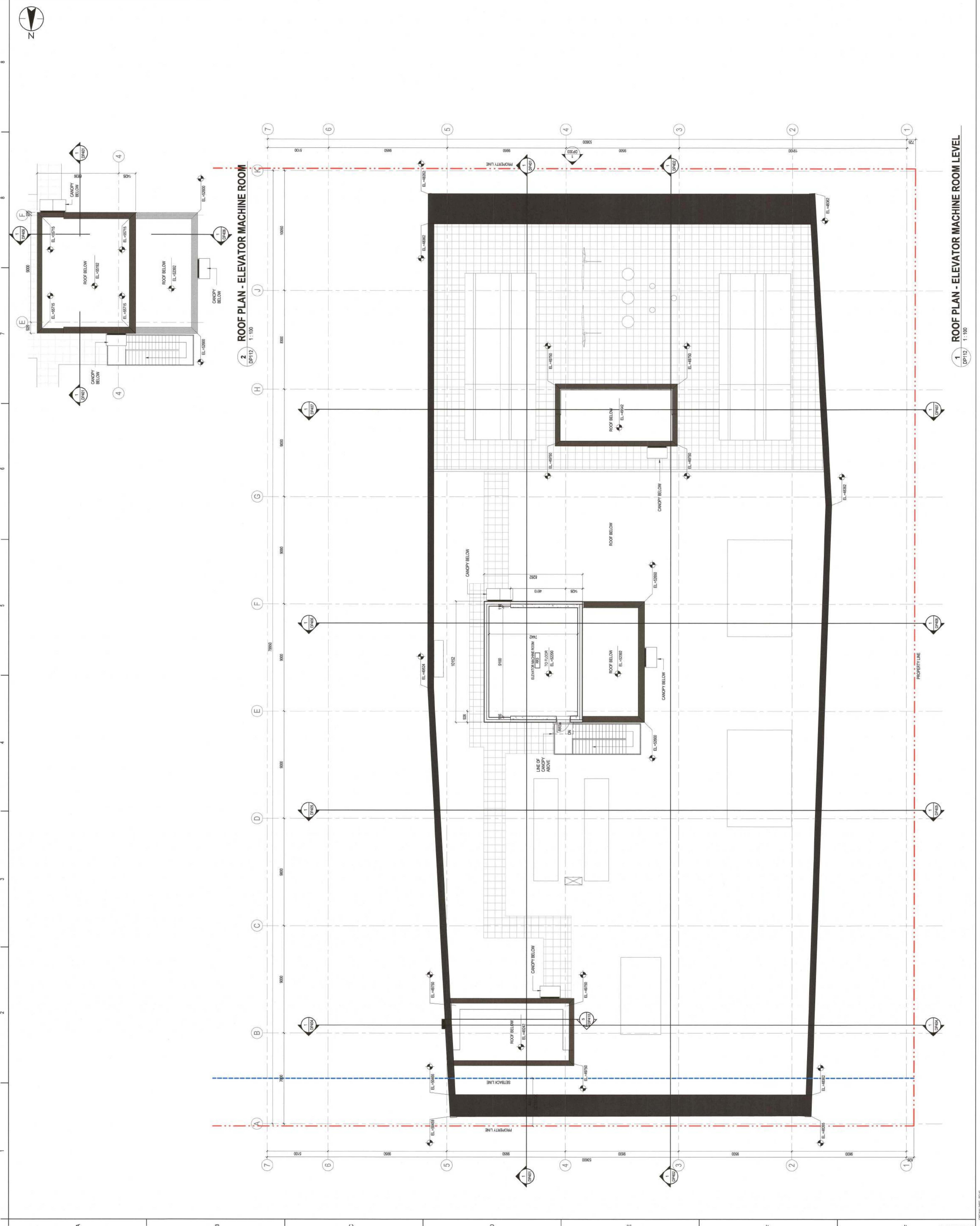
Issue / Revision	By	App'd	Date
1	SSS/DF/EP	DL	EL 2023.07.27
		By	App'd 2023.07.27



Client/Project
 Vancouver Community College
 Centre for Clean Energy and
 Automotive Innovation (CCEAI)
 1111 E 7th Ave
 Vancouver BC
 Title
 ROOF PLAN - UPPER ROOF LEVELS

Project No.
 144321150
 Scale
 1:100
 Revision
 Drawing No.
 1

DP112



2 ROOF PLAN - ELEVATOR MACHINE ROOM
 DP112 / 1:100

1 ROOF PLAN - ELEVATOR MACHINE ROOM LEVEL
 DP112 / 1:100



Client/Project
 Vancouver Community College
 Centre for Clean Energy and
 Automotive Innovation (CCEAI)
 1111 E 7th Ave
 Vancouver BC

Title
 EXTERIOR ELEVATION - WEST

Project No.
 14432130

Scale
 1:100

Revision
 Drawing No.
 1

DP300

EXTERIOR FINISH LEGEND

1	10 ALUMINUM COMPOSITE METAL PANEL - ALUOROND
2	10V30MM - COLOUR CURABLE METALIC
3	10V30MM - COLOUR CURABLE METALIC
4	10V30MM - COLOUR CURABLE METALIC
5	10V30MM - COLOUR CURABLE METALIC
6	10V30MM - COLOUR CURABLE METALIC
7	10V30MM - COLOUR CURABLE METALIC
8	10V30MM - COLOUR CURABLE METALIC
9	10V30MM - COLOUR CURABLE METALIC
10	10V30MM - COLOUR CURABLE METALIC
11	10V30MM - COLOUR CURABLE METALIC
12	10V30MM - COLOUR CURABLE METALIC
13	10V30MM - COLOUR CURABLE METALIC
14	10V30MM - COLOUR CURABLE METALIC
15	10V30MM - COLOUR CURABLE METALIC
16	10V30MM - COLOUR CURABLE METALIC
17	10V30MM - COLOUR CURABLE METALIC
18	10V30MM - COLOUR CURABLE METALIC
19	10V30MM - COLOUR CURABLE METALIC
20	10V30MM - COLOUR CURABLE METALIC
21	10V30MM - COLOUR CURABLE METALIC
22	10V30MM - COLOUR CURABLE METALIC
23	10V30MM - COLOUR CURABLE METALIC
24	10V30MM - COLOUR CURABLE METALIC
25	10V30MM - COLOUR CURABLE METALIC
26	10V30MM - COLOUR CURABLE METALIC
27	10V30MM - COLOUR CURABLE METALIC





Stantec Architecture Ltd.
Vancouver, BC V6B 6A3
Tel: (604) 681-6000 / Fax: (604) 681-6100
www.stantec.com

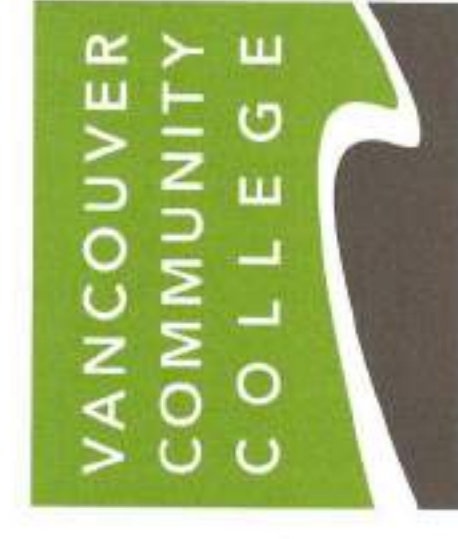
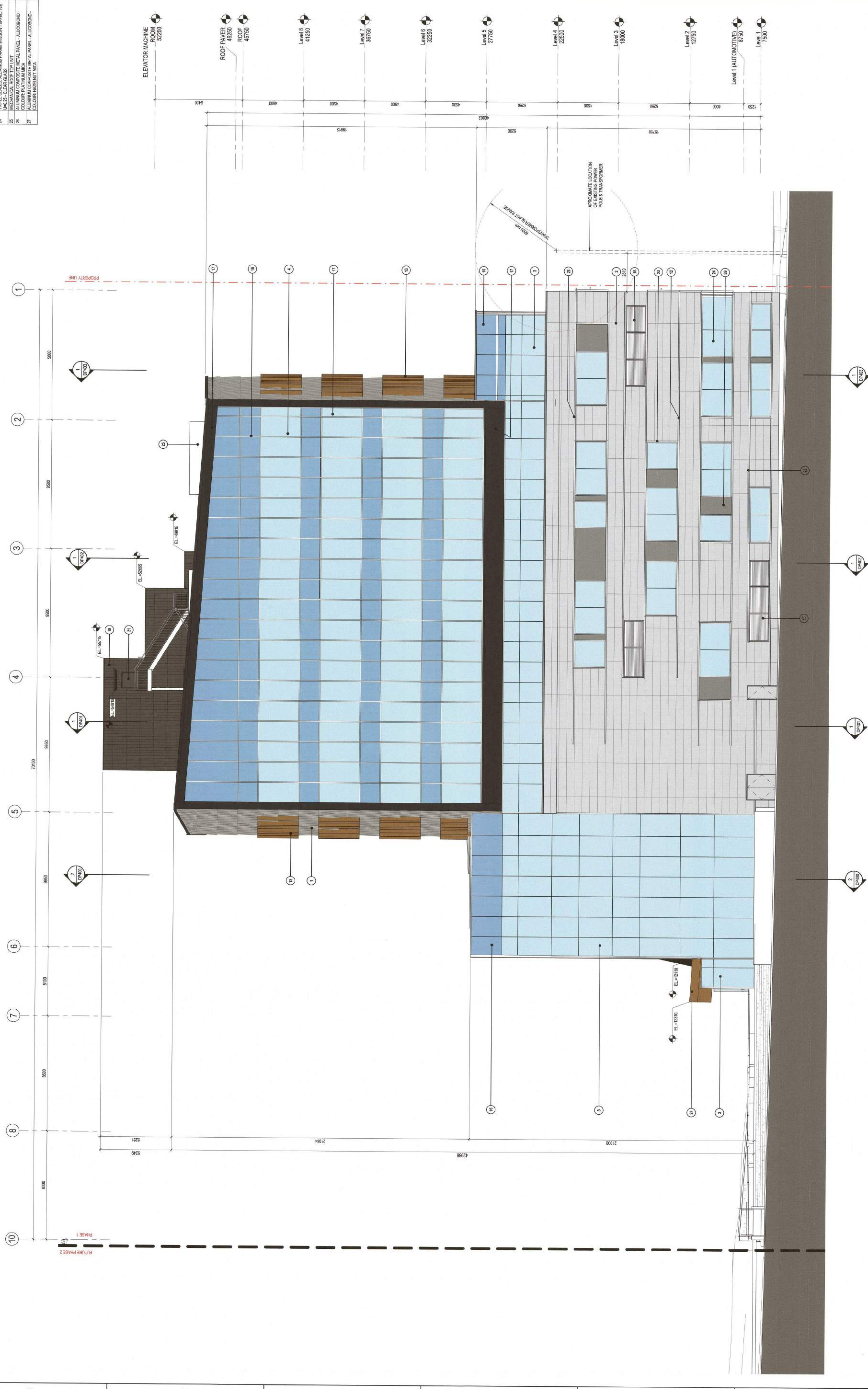
Copyright Reserved
This drawing is the property of Stantec.
Do not copy or reuse any part of this drawing
without the written consent of Stantec.
The copyright in this drawing and drawings are the property
of Stantec. It is not to be used for any purpose other than that
intended by Stantec.

Consultants

Legend

Notes

EXTERIOR RENOVATE LEGEND	
1	30 ALUMINUM COMPOSITE METAL PANEL - ALUCOBOND 1500/300MM - COLOUR: CRYSTAL METALLIC
2	30 ALUMINUM COMPOSITE METAL PANEL - ALUCOBOND 1500/300MM - COLOUR: CRYSTAL METALLIC
3	30 ALUMINUM COMPOSITE METAL PANEL - ALUCOBOND 1500/300MM - COLOUR: CRYSTAL METALLIC
4	30 ALUMINUM COMPOSITE METAL PANEL - ALUCOBOND 1500/300MM - COLOUR: CRYSTAL METALLIC
5	30 ALUMINUM COMPOSITE METAL PANEL - ALUCOBOND 1500/300MM - COLOUR: CRYSTAL METALLIC
6	30 ALUMINUM COMPOSITE METAL PANEL - ALUCOBOND 1500/300MM - COLOUR: CRYSTAL METALLIC
7	30 ALUMINUM COMPOSITE METAL PANEL - ALUCOBOND 1500/300MM - COLOUR: CRYSTAL METALLIC
8	30 ALUMINUM COMPOSITE METAL PANEL - ALUCOBOND 1500/300MM - COLOUR: CRYSTAL METALLIC
9	30 ALUMINUM COMPOSITE METAL PANEL - ALUCOBOND 1500/300MM - COLOUR: CRYSTAL METALLIC
10	30 ALUMINUM COMPOSITE METAL PANEL - ALUCOBOND 1500/300MM - COLOUR: CRYSTAL METALLIC
11	TRIPLE GLAZED ALUMINUM FRAME WINDOW - EFFECTIVE
12	TRIPLE GLAZED ALUMINUM FRAME WINDOW - EFFECTIVE
13	TRIPLE GLAZED ALUMINUM FRAME WINDOW - EFFECTIVE
14	TRIPLE GLAZED ALUMINUM FRAME WINDOW - EFFECTIVE
15	TRIPLE GLAZED ALUMINUM FRAME WINDOW - EFFECTIVE
16	TRIPLE GLAZED ALUMINUM FRAME WINDOW - EFFECTIVE
17	TRIPLE GLAZED ALUMINUM FRAME WINDOW - EFFECTIVE
18	TRIPLE GLAZED ALUMINUM FRAME WINDOW - EFFECTIVE
19	TRIPLE GLAZED ALUMINUM FRAME WINDOW - EFFECTIVE
20	TRIPLE GLAZED ALUMINUM FRAME WINDOW - EFFECTIVE
21	TRIPLE GLAZED ALUMINUM FRAME WINDOW - EFFECTIVE
22	TRIPLE GLAZED ALUMINUM FRAME WINDOW - EFFECTIVE
23	TRIPLE GLAZED ALUMINUM FRAME WINDOW - EFFECTIVE
24	TRIPLE GLAZED ALUMINUM FRAME WINDOW - EFFECTIVE
25	TRIPLE GLAZED ALUMINUM FRAME WINDOW - EFFECTIVE
26	TRIPLE GLAZED ALUMINUM FRAME WINDOW - EFFECTIVE
27	TRIPLE GLAZED ALUMINUM FRAME WINDOW - EFFECTIVE



Issue / Revision	By	CS	AP	EL	DATE
1	ELUC/CL/CLP				2023.01.27
2					2023.01.27
3					2023.01.27
4					2023.01.27
5					2023.01.27
6					2023.01.27
7					2023.01.27
8					2023.01.27
9					2023.01.27
10					2023.01.27
11					2023.01.27
12					2023.01.27
13					2023.01.27
14					2023.01.27
15					2023.01.27
16					2023.01.27
17					2023.01.27
18					2023.01.27
19					2023.01.27
20					2023.01.27
21					2023.01.27
22					2023.01.27
23					2023.01.27
24					2023.01.27
25					2023.01.27
26					2023.01.27
27					2023.01.27



Client/Project
 Vancouver Community College
 Centre for Clean Energy and
 Automotive Innovation (CCEAI)
 1111 E 7th Ave
 Vancouver BC

Title
 EXTERIOR ELEVATION - NORTH

Project No. 14432150
 Scale 1:100
 Revision 1
 Drawing No. DP301



Stantec Architecture US
 1100-111 Dargatzis Street
 Vancouver, BC V6E 4R2 / Tel: (604) 696-3000 / Fax: (604) 696-8100
 www.stantec.com

Copyright Reserved

All rights reserved. No part of this drawing may be reproduced, stored in a retrieval system, or transmitted in any form or by any means, electronic, mechanical, photocopying, recording, or by any information storage and retrieval system, without the prior written permission of Stantec Architecture US.

Consultants

Legend

Notes



Issue / Revision	By	DL	EL	2023.01.27
1	ISSUED FOR I.P.			



Client/Project
 Vancouver Community College
 Centre for Clean Energy and
 Automotive Innovation (CCEAI)
 1111 E 7th Ave
 Vancouver BC

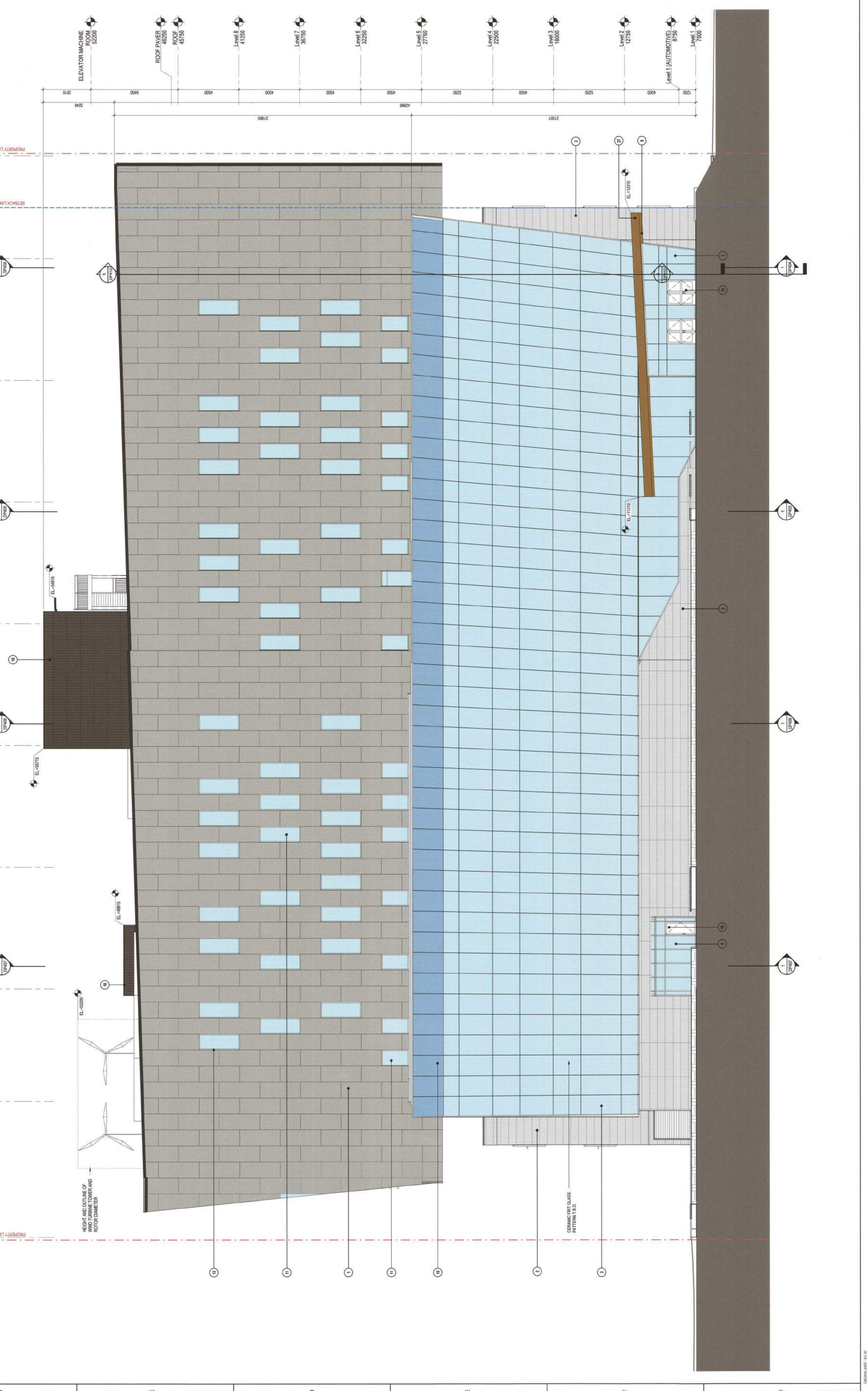
Title
 EXTERIOR ELEVATION - EAST

Project No.
 144321150
 Scale
 1:100
 Revision
 Drawing No.
 1

DP302

EXTERIOR KEYNOTE LEGEND

1	10 ALUMINUM COMPOSITE METAL PANEL - ALUODORND
2	100% ALUMINUM CLIMATE CONTROLLED METALIC
3	100% ALUMINUM CLIMATE CONTROLLED METALIC
4	100% ALUMINUM CLIMATE CONTROLLED METALIC
5	100% ALUMINUM CLIMATE CONTROLLED METALIC
6	100% ALUMINUM CLIMATE CONTROLLED METALIC
7	100% ALUMINUM CLIMATE CONTROLLED METALIC
8	100% ALUMINUM CLIMATE CONTROLLED METALIC
9	100% ALUMINUM CLIMATE CONTROLLED METALIC
10	100% ALUMINUM CLIMATE CONTROLLED METALIC
11	100% ALUMINUM CLIMATE CONTROLLED METALIC
12	100% ALUMINUM CLIMATE CONTROLLED METALIC
13	100% ALUMINUM CLIMATE CONTROLLED METALIC
14	100% ALUMINUM CLIMATE CONTROLLED METALIC
15	100% ALUMINUM CLIMATE CONTROLLED METALIC
16	100% ALUMINUM CLIMATE CONTROLLED METALIC
17	100% ALUMINUM CLIMATE CONTROLLED METALIC
18	100% ALUMINUM CLIMATE CONTROLLED METALIC
19	100% ALUMINUM CLIMATE CONTROLLED METALIC
20	100% ALUMINUM CLIMATE CONTROLLED METALIC
21	100% ALUMINUM CLIMATE CONTROLLED METALIC
22	100% ALUMINUM CLIMATE CONTROLLED METALIC
23	100% ALUMINUM CLIMATE CONTROLLED METALIC
24	100% ALUMINUM CLIMATE CONTROLLED METALIC
25	100% ALUMINUM CLIMATE CONTROLLED METALIC
26	100% ALUMINUM CLIMATE CONTROLLED METALIC
27	100% ALUMINUM CLIMATE CONTROLLED METALIC
28	100% ALUMINUM CLIMATE CONTROLLED METALIC
29	100% ALUMINUM CLIMATE CONTROLLED METALIC
30	100% ALUMINUM CLIMATE CONTROLLED METALIC
31	100% ALUMINUM CLIMATE CONTROLLED METALIC
32	100% ALUMINUM CLIMATE CONTROLLED METALIC
33	100% ALUMINUM CLIMATE CONTROLLED METALIC
34	100% ALUMINUM CLIMATE CONTROLLED METALIC
35	100% ALUMINUM CLIMATE CONTROLLED METALIC
36	100% ALUMINUM CLIMATE CONTROLLED METALIC
37	100% ALUMINUM CLIMATE CONTROLLED METALIC
38	100% ALUMINUM CLIMATE CONTROLLED METALIC
39	100% ALUMINUM CLIMATE CONTROLLED METALIC
40	100% ALUMINUM CLIMATE CONTROLLED METALIC
41	100% ALUMINUM CLIMATE CONTROLLED METALIC
42	100% ALUMINUM CLIMATE CONTROLLED METALIC
43	100% ALUMINUM CLIMATE CONTROLLED METALIC
44	100% ALUMINUM CLIMATE CONTROLLED METALIC
45	100% ALUMINUM CLIMATE CONTROLLED METALIC
46	100% ALUMINUM CLIMATE CONTROLLED METALIC
47	100% ALUMINUM CLIMATE CONTROLLED METALIC
48	100% ALUMINUM CLIMATE CONTROLLED METALIC
49	100% ALUMINUM CLIMATE CONTROLLED METALIC
50	100% ALUMINUM CLIMATE CONTROLLED METALIC
51	100% ALUMINUM CLIMATE CONTROLLED METALIC
52	100% ALUMINUM CLIMATE CONTROLLED METALIC
53	100% ALUMINUM CLIMATE CONTROLLED METALIC
54	100% ALUMINUM CLIMATE CONTROLLED METALIC
55	100% ALUMINUM CLIMATE CONTROLLED METALIC
56	100% ALUMINUM CLIMATE CONTROLLED METALIC
57	100% ALUMINUM CLIMATE CONTROLLED METALIC
58	100% ALUMINUM CLIMATE CONTROLLED METALIC
59	100% ALUMINUM CLIMATE CONTROLLED METALIC
60	100% ALUMINUM CLIMATE CONTROLLED METALIC
61	100% ALUMINUM CLIMATE CONTROLLED METALIC
62	100% ALUMINUM CLIMATE CONTROLLED METALIC
63	100% ALUMINUM CLIMATE CONTROLLED METALIC
64	100% ALUMINUM CLIMATE CONTROLLED METALIC
65	100% ALUMINUM CLIMATE CONTROLLED METALIC
66	100% ALUMINUM CLIMATE CONTROLLED METALIC
67	100% ALUMINUM CLIMATE CONTROLLED METALIC
68	100% ALUMINUM CLIMATE CONTROLLED METALIC
69	100% ALUMINUM CLIMATE CONTROLLED METALIC
70	100% ALUMINUM CLIMATE CONTROLLED METALIC
71	100% ALUMINUM CLIMATE CONTROLLED METALIC
72	100% ALUMINUM CLIMATE CONTROLLED METALIC
73	100% ALUMINUM CLIMATE CONTROLLED METALIC
74	100% ALUMINUM CLIMATE CONTROLLED METALIC
75	100% ALUMINUM CLIMATE CONTROLLED METALIC
76	100% ALUMINUM CLIMATE CONTROLLED METALIC
77	100% ALUMINUM CLIMATE CONTROLLED METALIC
78	100% ALUMINUM CLIMATE CONTROLLED METALIC
79	100% ALUMINUM CLIMATE CONTROLLED METALIC
80	100% ALUMINUM CLIMATE CONTROLLED METALIC
81	100% ALUMINUM CLIMATE CONTROLLED METALIC
82	100% ALUMINUM CLIMATE CONTROLLED METALIC
83	100% ALUMINUM CLIMATE CONTROLLED METALIC
84	100% ALUMINUM CLIMATE CONTROLLED METALIC
85	100% ALUMINUM CLIMATE CONTROLLED METALIC
86	100% ALUMINUM CLIMATE CONTROLLED METALIC
87	100% ALUMINUM CLIMATE CONTROLLED METALIC
88	100% ALUMINUM CLIMATE CONTROLLED METALIC
89	100% ALUMINUM CLIMATE CONTROLLED METALIC
90	100% ALUMINUM CLIMATE CONTROLLED METALIC
91	100% ALUMINUM CLIMATE CONTROLLED METALIC
92	100% ALUMINUM CLIMATE CONTROLLED METALIC
93	100% ALUMINUM CLIMATE CONTROLLED METALIC
94	100% ALUMINUM CLIMATE CONTROLLED METALIC
95	100% ALUMINUM CLIMATE CONTROLLED METALIC
96	100% ALUMINUM CLIMATE CONTROLLED METALIC
97	100% ALUMINUM CLIMATE CONTROLLED METALIC
98	100% ALUMINUM CLIMATE CONTROLLED METALIC
99	100% ALUMINUM CLIMATE CONTROLLED METALIC
100	100% ALUMINUM CLIMATE CONTROLLED METALIC





Stantec Architecture Ltd.
1100 111 Duane Street
Vancouver, BC V6A 0A3
Tel: (604) 681-8800 / Fax: (604) 681-8100
www.stantec.com

Copyright Reserved
This drawing is the property of Stantec Architecture Ltd. and is to be used only for the project and site identified herein. No part of this drawing may be reproduced or transmitted in any form or by any means, electronic, mechanical, photocopying, recording, or by any information storage and retrieval system, without the prior written permission of Stantec Architecture Ltd.

Consultants:

Legend

Notes



Issue / Revision	By	Date
1. ISSUED FOR PERMIT	AY	2023.03.27



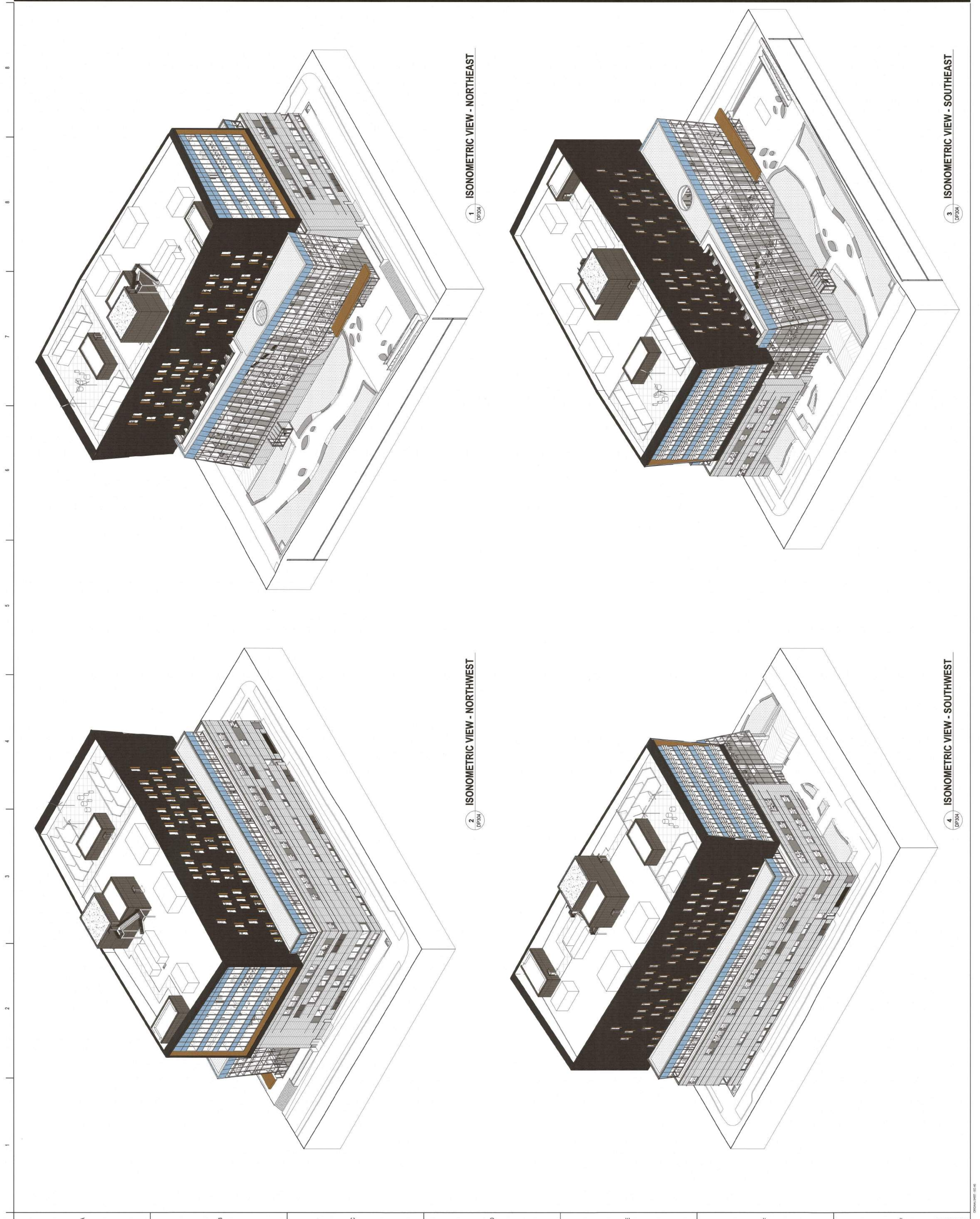
Client/Project
Vancouver Community College
Centre for Clean Energy and
Automotive Innovation (CCEAI)
1111 E 7th Ave
Vancouver BC

Title
AXONOMETRIC

Project No.
144021150

Scale
Revision
1

Drawing No.
DP304



1 ISONOMETRIC VIEW - NORTHEAST
DP304

2 ISONOMETRIC VIEW - NORTHWEST
DP304

3 ISONOMETRIC VIEW - SOUTHEAST
DP304

4 ISONOMETRIC VIEW - SOUTHWEST
DP304



Stantec Architecture Ltd.
1180-111 Dwyer Street
Vancouver, BC V6C 3K3
Tel: (604) 681-3377 / Fax: (604) 681-8100
www.stantec.com

Copyright Reserved
All rights reserved. No part of this document may be reproduced for any purpose without the prior written consent of Stantec Architecture Ltd.
The Copyright in all designs and drawings are the property of Stantec Architecture Ltd. and shall remain the property of Stantec Architecture Ltd.

Consultants

Legend

Notes



Issue / Revision	By	Date
1	Issued	2023.02.27



Permit/Seal

Client/Project
Vancouver Community College
Centre for Clean Energy and
Automotive Innovation (CCEAI)
1111 E 7th Ave
Vancouver BC

Title
3D RENDERING

Project No.
14421130

Revision
1

Drawing No.
DP330

