

1250 GRANVILLE STREET

ISSUED FOR DEVELOPMENT PERMIT

CLIENT:

P. ROCK LTD.
MARIA ROECK
mariaroeck@shaw.ca
778.990.7821

ARCHITECTS:

LANG WILSON PRACTICE IN ARCHITECTURE
CULTURE
OLIVER LANG
office@lwpac.net
604.737.7600

LANDSCAPE ARCHITECT:

G | ALA GAUTHIER + ASSOCIATES LANDSCAPE
ARCHITECTS INC.

BRYCE GAUTHIER
bryce@gauthierla.com
604.317.9682

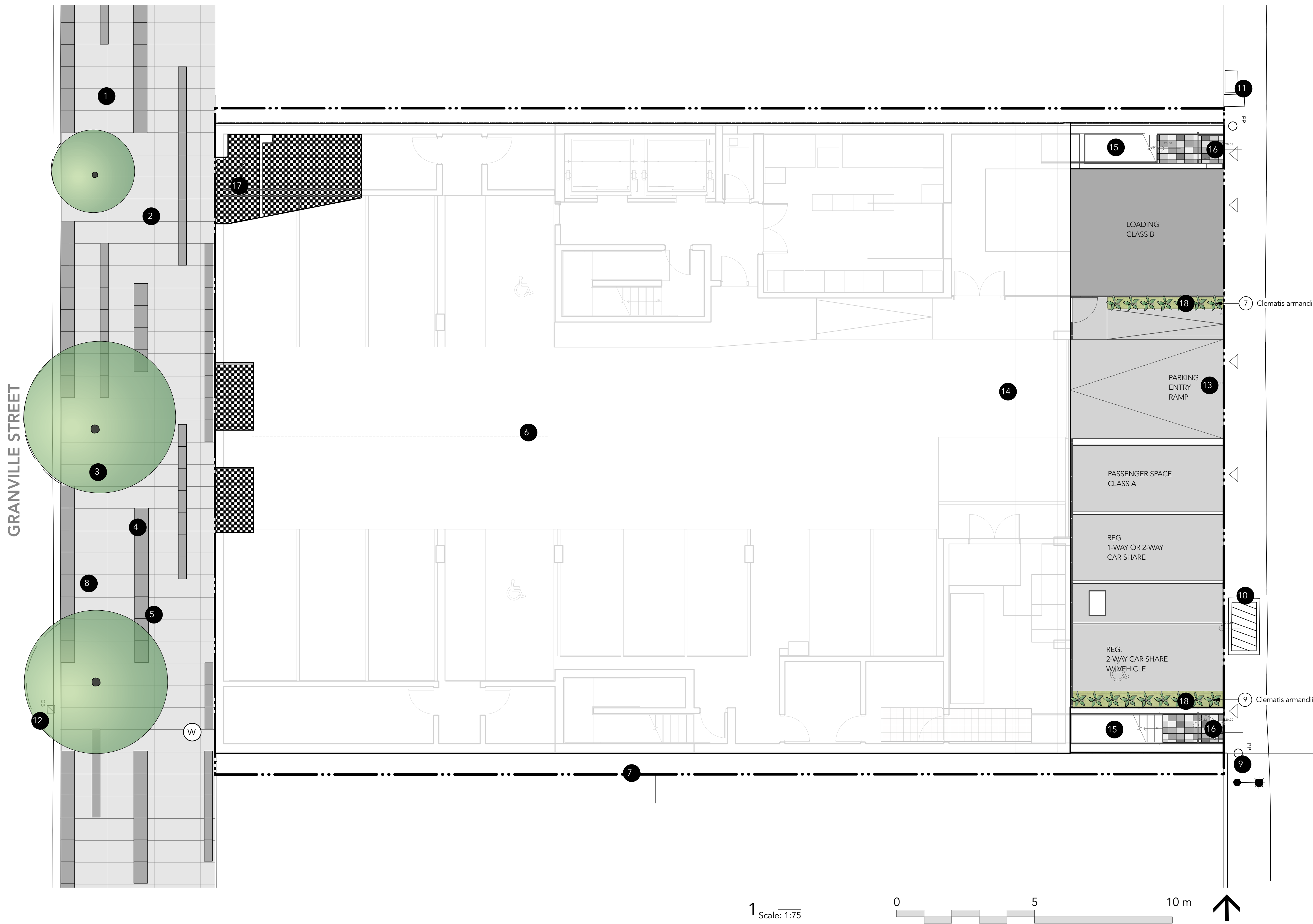
HUIJING CHEN
huijing@gauthierla.com
778.319.2359

LANDSCAPE DRAWING INDEX PERMIT

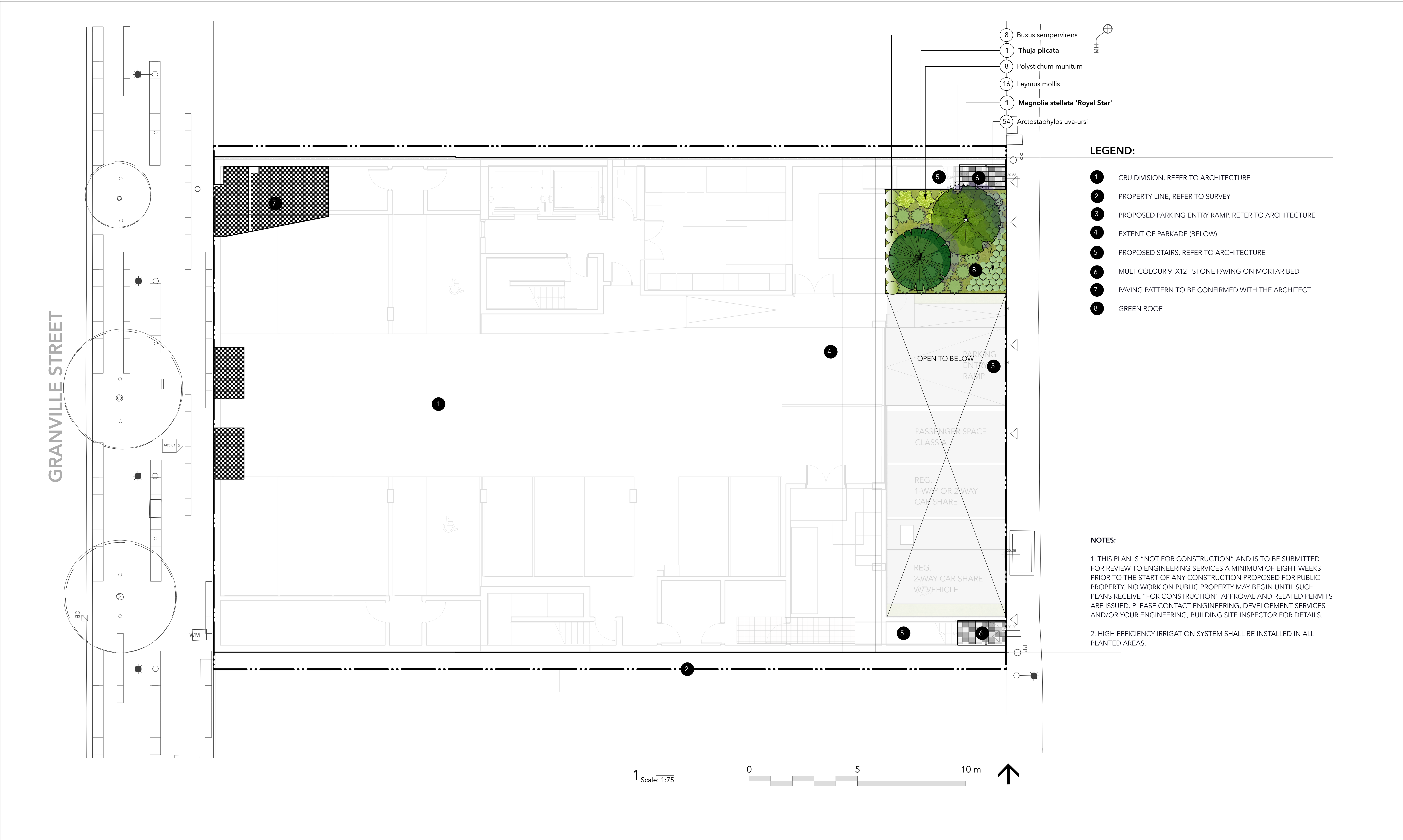
Sheet No.	Sheet Name
L0.0	COVER SHEET
L1.0	SITE PLAN
L1.1	LANDSCAPE PLAN - LEVEL 1
L2.0	LANDSCAPE PLAN - LEVEL 3
L2.1	PLANTING PLAN - LEVEL 3
L3.0	LANDSCAPE PLAN - LEVEL 4
L4.0	LANDSCAPE PLAN - LEVEL 5
L5.0	LANDSCAPE PLAN - LEVEL 6
L6.0	LANDSCAPE PLAN - LEVEL 7
L7.0	LANDSCAPE PLAN - LEVEL 8
L8.0	LANDSCAPE PLAN - LEVEL 9
L8.1	PLANTING PLAN - LEVEL 9
L9.0	PLANT LISTS
L10.0	SECTIONS
L10.1	SECTIONS
L11.0	MATERIALS AND LANDSCAPE PRECEDENTS

GENERAL NOTES

1. ALL PLANTING SHALL BE IN ACCORDANCE WITH CANADIAN LANDSCAPE STANDARD, LATEST EDITION.
2. ALL PLANTING AREAS TO RECEIVE HIGH EFFICIENCY AUTOMATIC DRIP IRRIGATION, WITH TIME CLOCK AND RAIN SENSOR
3. ALL SUBSTITUTIONS OF SPECIFIED MATERIALS TO BE APPROVED BY LANDSCAPE ARCHITECT.
4. FINAL PLANT SPACING, QUANTITY AND TREE PLACEMENT SHALL REVIEWED TO THE SATISFACTION OF GENERAL MANAGER OF ENGINEERING SERVICES.
5. ALL WORKS ON CITY OF VANCOUVER PROPERTY TO BE AS PER THE CITY OF VANCOUVER STREET RESTORATION MANUAL.
6. ENNS GAUTHIER LANDSCAPE ARCHITECTS DOES NOT GUARANTEE THE EXISTENCE, LOCATION, AND ELEVATION OF UTILITIES OR CONCEALED STRUCTURES AT THE PROJECT SITE.
7. FINAL LOCATION, QUANTITY, TREE SPECIES TO THE SATISFACTION OF THE GENERAL MANAGER OF ENGINEERING. CONTACT EILEEN CURRAN AT 604.871.6131 TO CONFIRM PLANTING LOCATION. NEW TREE MUST BE OF GOOD STANDARD, MINIMUM 6 CM CALLIPER AND INSTALLED WITH APPROVED ROOT BARRIERS, TREE GUARDS AND APPROPRIATE SOIL. ROOT BARRIERS SHALL BE 8 FEET LONG AND 18 INCHES DEEP. PLANTING DEPTH OF ROOT BALL MUST BE BELOW SIDEWALK GRADE. NEW STREET TREES TO BE CONFIRMED PRIOR TO ISSUANCE OF THE BUILDING PERMIT. CALL CABOT LYFORD AT PARK BOARD AT 311 FOR TREE SPECIES SELECTION AND PLANTING REQUIREMENTS. PARK BOARD TO INSPECT AND APPROVE AFTER TREE PLANTING COMPLETION.
8. TRENCHING FOR UTILITY CONNECTIONS TO BE COORDINATED WITH ENGINEERING DEPARTMENT TO ENSURE SAFE ROOT ZONES OF RETAINED TREES. METHODS OF TREE PROTECTION FOR STREET TREES TO BE APPROVED BY PARK BOARD.
9. ALL LANDSCAPING AND TREATMENT OF THE OPEN PORTIONS OF THE SITE SHALL BE COMPLETED IN ACCORDANCE WITH THE APPROVED DRAWINGS PRIOR TO THE ISSUANCE OF ANY REQUIRED OCCUPANCY PERMIT, OR ANY USE OR OCCUPANCY OF THE PROPOSED DEVELOPMENT NOT REQUIRING AN OCCUPANCY PERMIT, AND THEREAFTER PERMANENTLY MAINTAINED IN GOOD CONDITION.



- LEGEND:**
- 1 EXISTING SIDEWALK PAVING, TO REMAIN & PROTECT
 - 2 EXISTING BANDING PAVING, TO REMAIN & PROTECT
 - 3 EXISTING TREE, TYP., TO REMAIN & PROTECT
 - 4 EXISTING LIGHT POLE, TYP., TO REMAIN & PROTECT
 - 5 EXISITNG BOLLARDS, TYP., TO REMAIN & PROTECT
 - 6 CRU DIVISION, REFER TO ARCHITECTURE
 - 7 PROPERTY LINE, REFER TO SURVEY
 - 8 EXISTING ELETRICAL INSPECTION CHAMBER, TO REMAIN & PROTECT
 - 9 EXISITNG POWER POLE, TYP., TO REMAIN & PROTECT
 - 10 EXISITNG UTILITY VAULT, TO REMAIN & PROTECT
 - 11 EXISTING 2 METAL COVERS, TO REMAIN & PROTECT
 - 12 EXISTING CATCH BASIN, TYP., TO REMAIN & PROTECT
 - 13 PROPOSED PARKING ENTRY RAMP, REFER TO ARCHITECTURE
 - 14 EXTENT OF PARKADE (BELOW)
 - 15 PROPOSED STAIRS, REFER TO ARCHITECTURE
 - 16 MULTICOLOUR 9"X12" STONE PAVING ON MORTAR BED
 - 17 PAVING PATTERN TO BE CONFIRMED WITH THE ARCHITECT
 - 18 FLUSH PLANTER WITH VINES
 - (W) WATER CONNECTION WITH CODE COMPLIANT HOSE BIB
- NOTES:**
1. THIS PLAN IS "NOT FOR CONSTRUCTION" AND IS TO BE SUBMITTED FOR REVIEW TO ENGINEERING SERVICES A MINIMUM OF EIGHT WEEKS PRIOR TO THE START OF ANY CONSTRUCTION PROPOSED FOR PUBLIC PROPERTY. NO WORK ON PUBLIC PROPERTY MAY BEGIN UNTIL SUCH PLANS RECEIVE "FOR CONSTRUCTION" APPROVAL AND RELATED PERMITS ARE ISSUED. PLEASE CONTACT ENGINEERING, DEVELOPMENT SERVICES AND/OR YOUR ENGINEERING, BUILDING SITE INSPECTOR FOR DETAILS.
2. HIGH EFFICIENCY IRRIGATION SYSTEM SHALL BE INSTALLED IN ALL PLANTED AREAS.



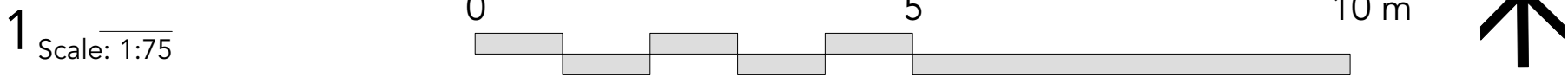


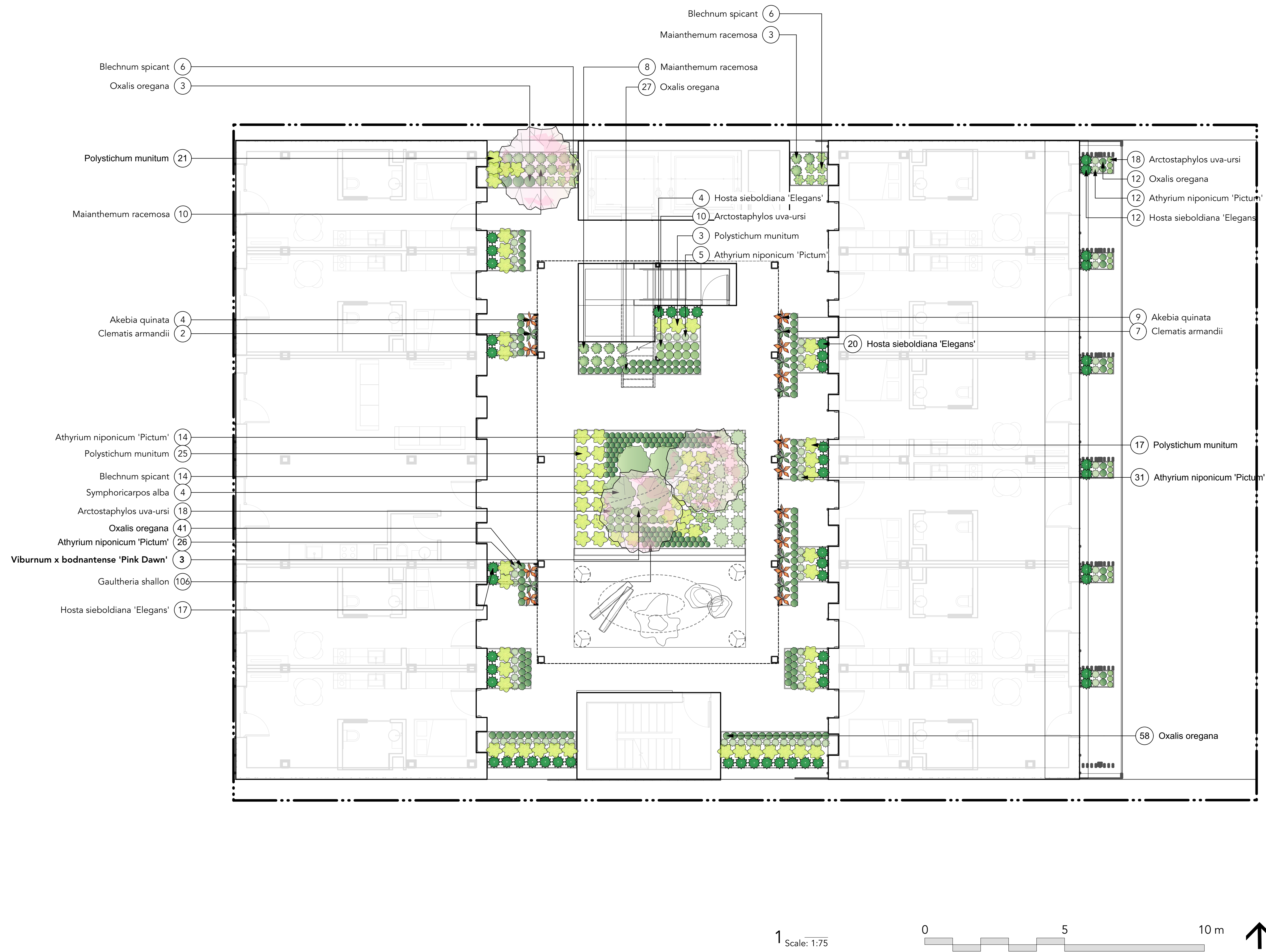
- LEGEND:**
- 1 18"x18"HYDRAPRESSED PAVERS, 30% CHARCOAL & 70% GREY RANDOM PATTERN
 - 2 COURTYARD PLANTING WITH BERM
 - 3 CUSTOM 42"DEPHT ALUMINUM PLANTER WITH PLANTING, TYP.
 - 4 PLAY LOGS, TYP.
 - 5 TIMBER BENCH, TYP.
 - 6 CLIMBING BOULDERS, TYP.
 - 7 CHILDREN'S HANGING POD, TYP.
 - 8 PIP. FALL SURFACE WITH BERM
 - 9 CHILDREN'S CHALKWALL & COMMUNITY MESSAGE BOARD
 - 10 CLIMBING ROOT
 - 11 CUSTOM 24" DEPTH METAL PLANTER WITH PLANTING, TYP.
 - 12 PLAY WALL
 - 13 GREEN ROOF
 - 14 VERTICAL WIRE CABLE TRELLIS WITH CLIMBING VINES

NOTES:

1. THIS PLAN IS "NOT FOR CONSTRUCTION" AND IS TO BE SUBMITTED FOR REVIEW TO ENGINEERING SERVICES A MINIMUM OF EIGHT WEEKS PRIOR TO THE START OF ANY CONSTRUCTION PROPOSED FOR PUBLIC PROPERTY. NO WORK ON PUBLIC PROPERTY MAY BEGIN UNTIL SUCH PLANS RECEIVE "FOR CONSTRUCTION" APPROVAL AND RELATED PERMITS ARE ISSUED. PLEASE CONTACT ENGINEERING, DEVELOPMENT SERVICES AND/OR YOUR ENGINEERING, BUILDING SITE INSPECTOR FOR DETAILS.

2. HIGH EFFICIENCY IRRIGATION SYSTEM SHALL BE INSTALLED IN ALL PLANTED AREAS.





NOTES:

1. THIS PLAN IS "NOT FOR CONSTRUCTION" AND IS TO BE SUBMITTED FOR REVIEW TO ENGINEERING SERVICES A MINIMUM OF EIGHT WEEKS PRIOR TO THE START OF ANY CONSTRUCTION PROPOSED FOR PUBLIC PROPERTY. NO WORK ON PUBLIC PROPERTY MAY BEGIN UNTIL SUCH PLANS RECEIVE "FOR CONSTRUCTION" APPROVAL AND RELATED PERMITS ARE ISSUED. PLEASE CONTACT ENGINEERING, DEVELOPMENT SERVICES AND/OR YOUR ENGINEERING, BUILDING SITE INSPECTOR FOR DETAILS.

2. HIGH EFFICIENCY IRRIGATION SYSTEM SHALL BE INSTALLED IN ALL PLANTED AREAS.



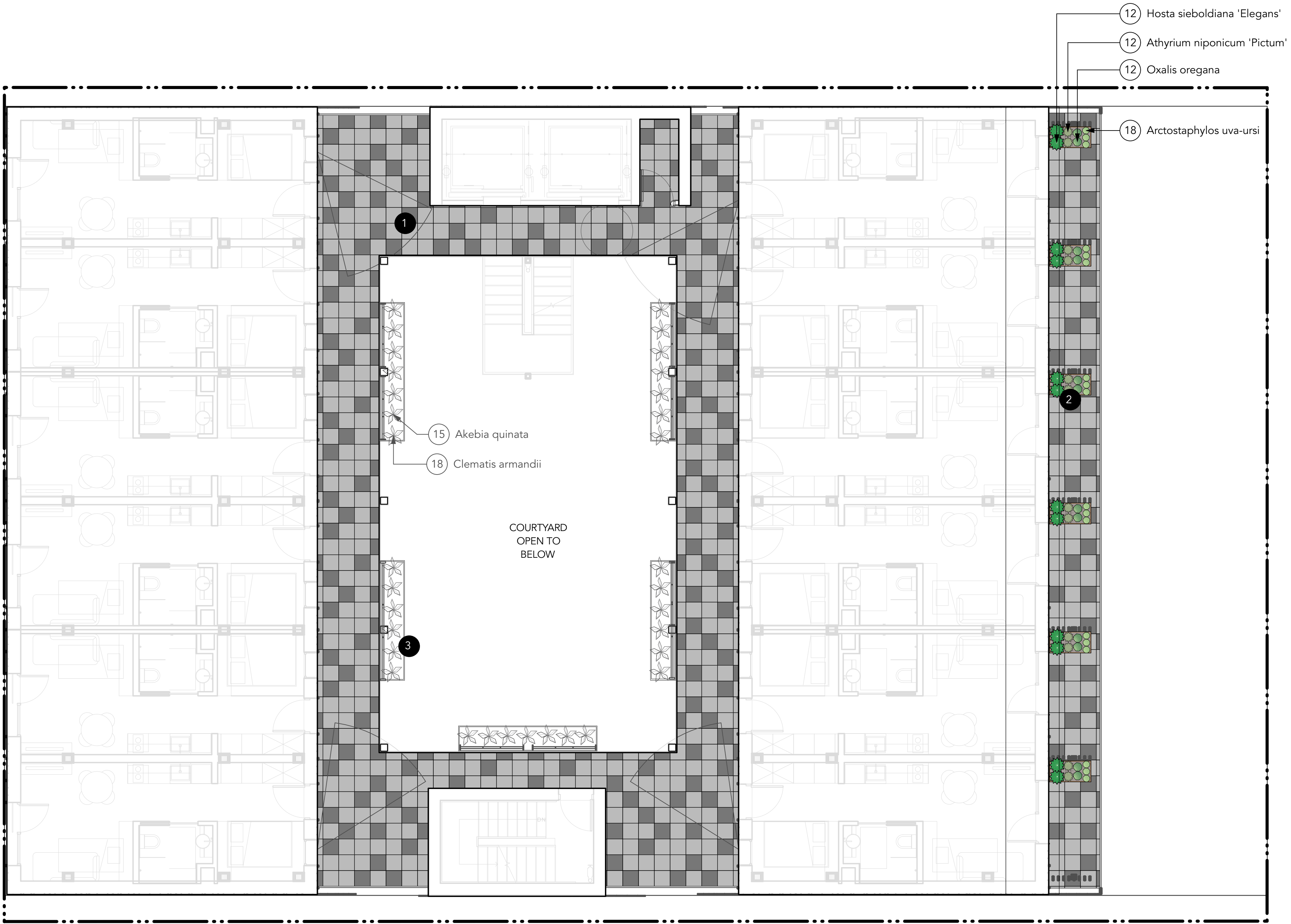
LEGEND:

- 1 18"x18" HYDRAPRESSED PAVERS, 30% CHARCOAL & 70% GREY RANDOM PATTERN
- 2 CUSTOM 42" DEPTH ALUMINUM PLANTER WITH PLANTING, TYP.
- 3 VERTICAL WIRE CABLE TRELLIS WITH CLIMBING VINES

NOTES:

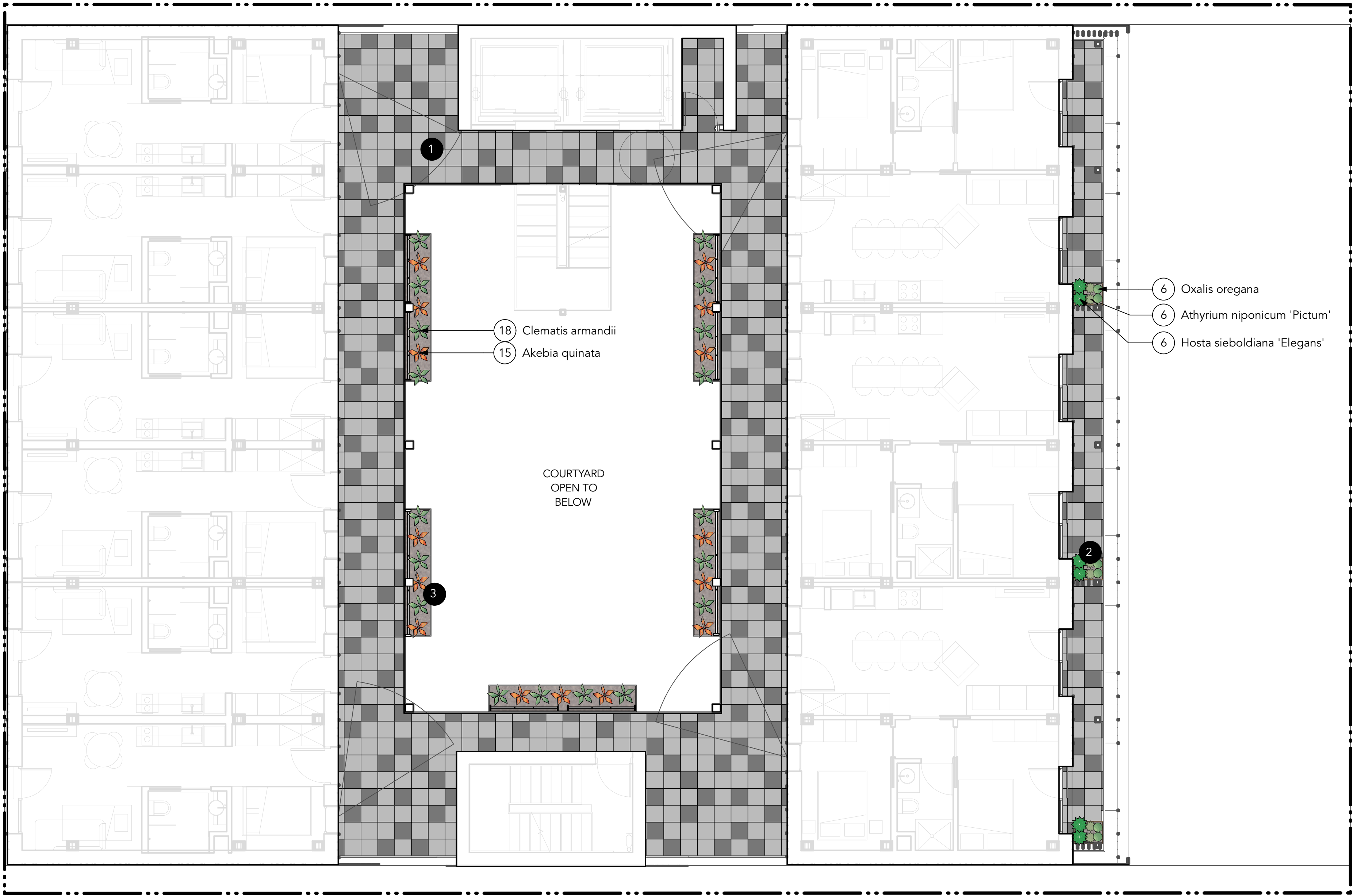
1. THIS PLAN IS "NOT FOR CONSTRUCTION" AND IS TO BE SUBMITTED FOR REVIEW TO ENGINEERING SERVICES A MINIMUM OF EIGHT WEEKS PRIOR TO THE START OF ANY CONSTRUCTION PROPOSED FOR PUBLIC PROPERTY. NO WORK ON PUBLIC PROPERTY MAY BEGIN UNTIL SUCH PLANS RECEIVE "FOR CONSTRUCTION" APPROVAL AND RELATED PERMITS ARE ISSUED. PLEASE CONTACT ENGINEERING, DEVELOPMENT SERVICES AND/OR YOUR ENGINEERING, BUILDING SITE INSPECTOR FOR DETAILS.

2. HIGH EFFICIENCY IRRIGATION SYSTEM SHALL BE INSTALLED IN ALL PLANTED AREAS.



- LEGEND:
- 1 18"x18"HYDRAPRESSED PAVERS, 30% CHARCOAL & 70% GREY RANDOM PATTERN
 - 2 CUSTOM 42"DEPHT ALUMINUM PLANTER WITH PLANTING, TYP.
 - 3 VERTICAL WIRE CABLE TRELLIS WITH CLIMBING VINES

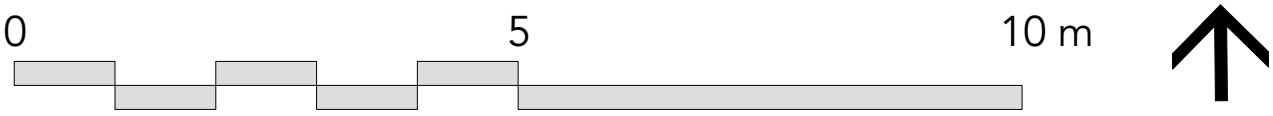
- NOTES:
1. THIS PLAN IS "NOT FOR CONSTRUCTION" AND IS TO BE SUBMITTED FOR REVIEW TO ENGINEERING SERVICES A MINIMUM OF EIGHT WEEKS PRIOR TO THE START OF ANY CONSTRUCTION PROPOSED FOR PUBLIC PROPERTY. NO WORK ON PUBLIC PROPERTY MAY BEGIN UNTIL SUCH PLANS RECEIVE "FOR CONSTRUCTION" APPROVAL AND RELATED PERMITS ARE ISSUED. PLEASE CONTACT ENGINEERING, DEVELOPMENT SERVICES AND/OR YOUR ENGINEERING, BUILDING SITE INSPECTOR FOR DETAILS.
2. HIGH EFFICIENCY IRRIGATION SYSTEM SHALL BE INSTALLED IN ALL PLANTED AREAS.

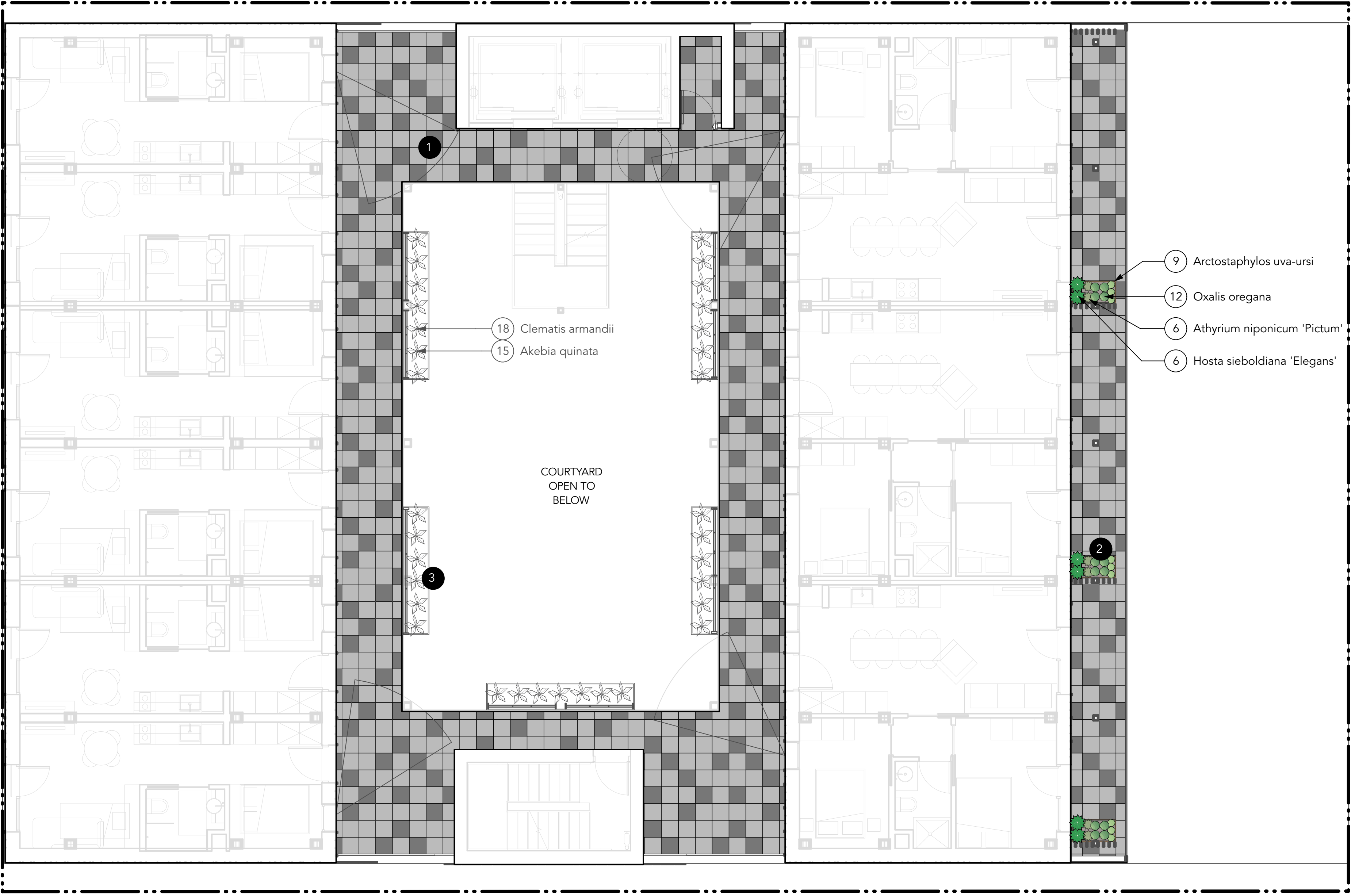


- LEGEND:
- 1 18"x18" HYDRAPRESSED PAVERS, 30% CHARCOAL & 70% GREY RANDOM PATTERN
 - 2 CUSTOM 42" DEPTH ALUMINUM PLANTER WITH PLANTING, TYP.
 - 3 VERTICAL WIRE CABLE TRELLIS WITH CLIMBING VINES

- NOTES:
1. THIS PLAN IS "NOT FOR CONSTRUCTION" AND IS TO BE SUBMITTED FOR REVIEW TO ENGINEERING SERVICES A MINIMUM OF EIGHT WEEKS PRIOR TO THE START OF ANY CONSTRUCTION PROPOSED FOR PUBLIC PROPERTY. NO WORK ON PUBLIC PROPERTY MAY BEGIN UNTIL SUCH PLANS RECEIVE "FOR CONSTRUCTION" APPROVAL AND RELATED PERMITS ARE ISSUED. PLEASE CONTACT ENGINEERING, DEVELOPMENT SERVICES AND/OR YOUR ENGINEERING, BUILDING SITE INSPECTOR FOR DETAILS.
2. HIGH EFFICIENCY IRRIGATION SYSTEM SHALL BE INSTALLED IN ALL PLANTED AREAS.

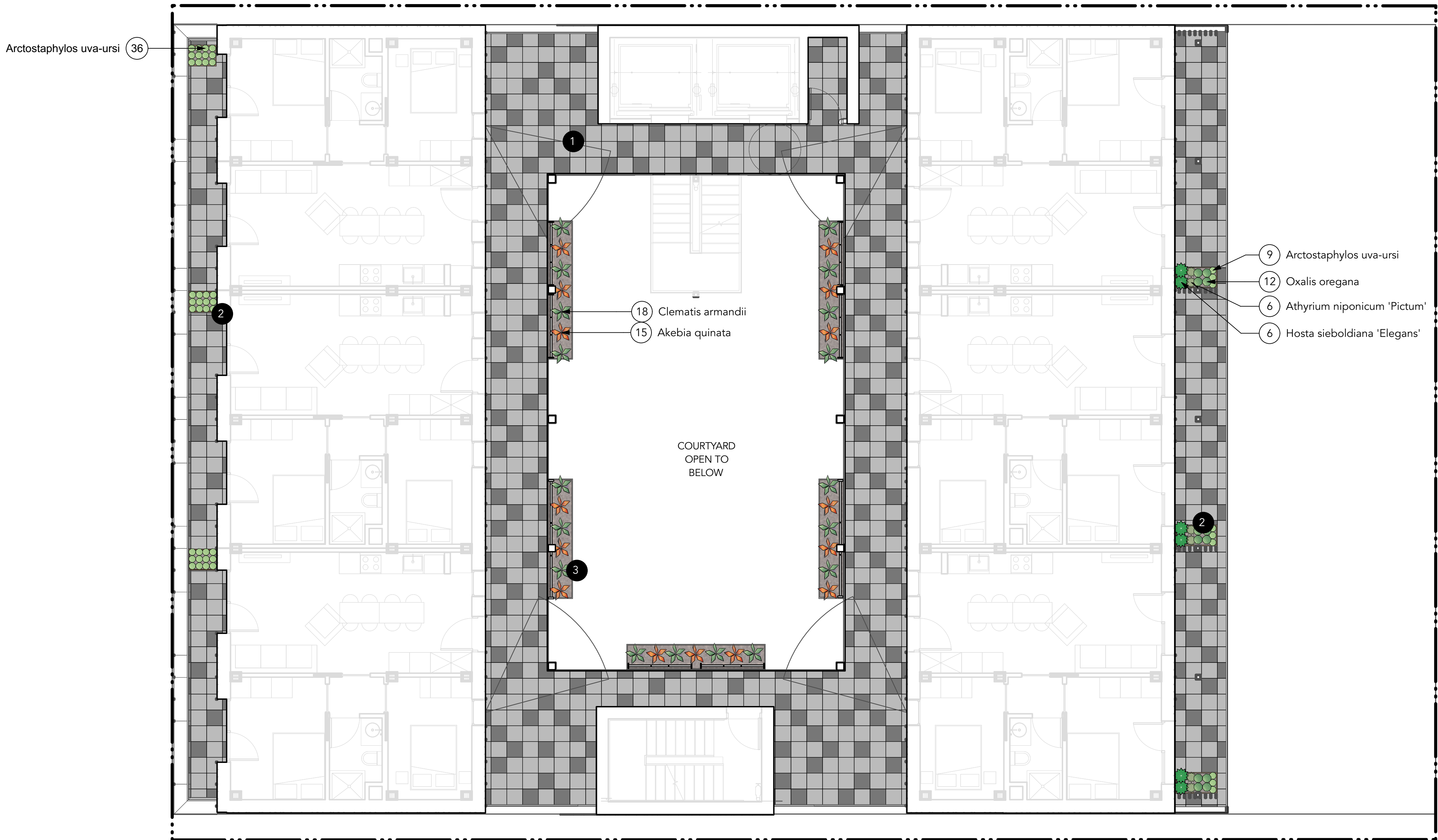
1 Scale: 1:75





- LEGEND:
- 1 18"X18"HYDRAPRESSED PAVERS, 30% CHARCOAL & 70% GREY RANDOM PATTERN
 - 2 CUSTOM 42"DEPHT ALUMINUM PLANTER WITH PLANTING, TYP.
 - 3 VERTICAL WIRE CABLE TRELLIS WITH CLIMBING VINES

- NOTES:
1. THIS PLAN IS "NOT FOR CONSTRUCTION" AND IS TO BE SUBMITTED FOR REVIEW TO ENGINEERING SERVICES A MINIMUM OF EIGHT WEEKS PRIOR TO THE START OF ANY CONSTRUCTION PROPOSED FOR PUBLIC PROPERTY. NO WORK ON PUBLIC PROPERTY MAY BEGIN UNTIL SUCH PLANS RECEIVE "FOR CONSTRUCTION" APPROVAL AND RELATED PERMITS ARE ISSUED. PLEASE CONTACT ENGINEERING, DEVELOPMENT SERVICES AND/OR YOUR ENGINEERING, BUILDING SITE INSPECTOR FOR DETAILS.
2. HIGH EFFICIENCY IRRIGATION SYSTEM SHALL BE INSTALLED IN ALL PLANTED AREAS.

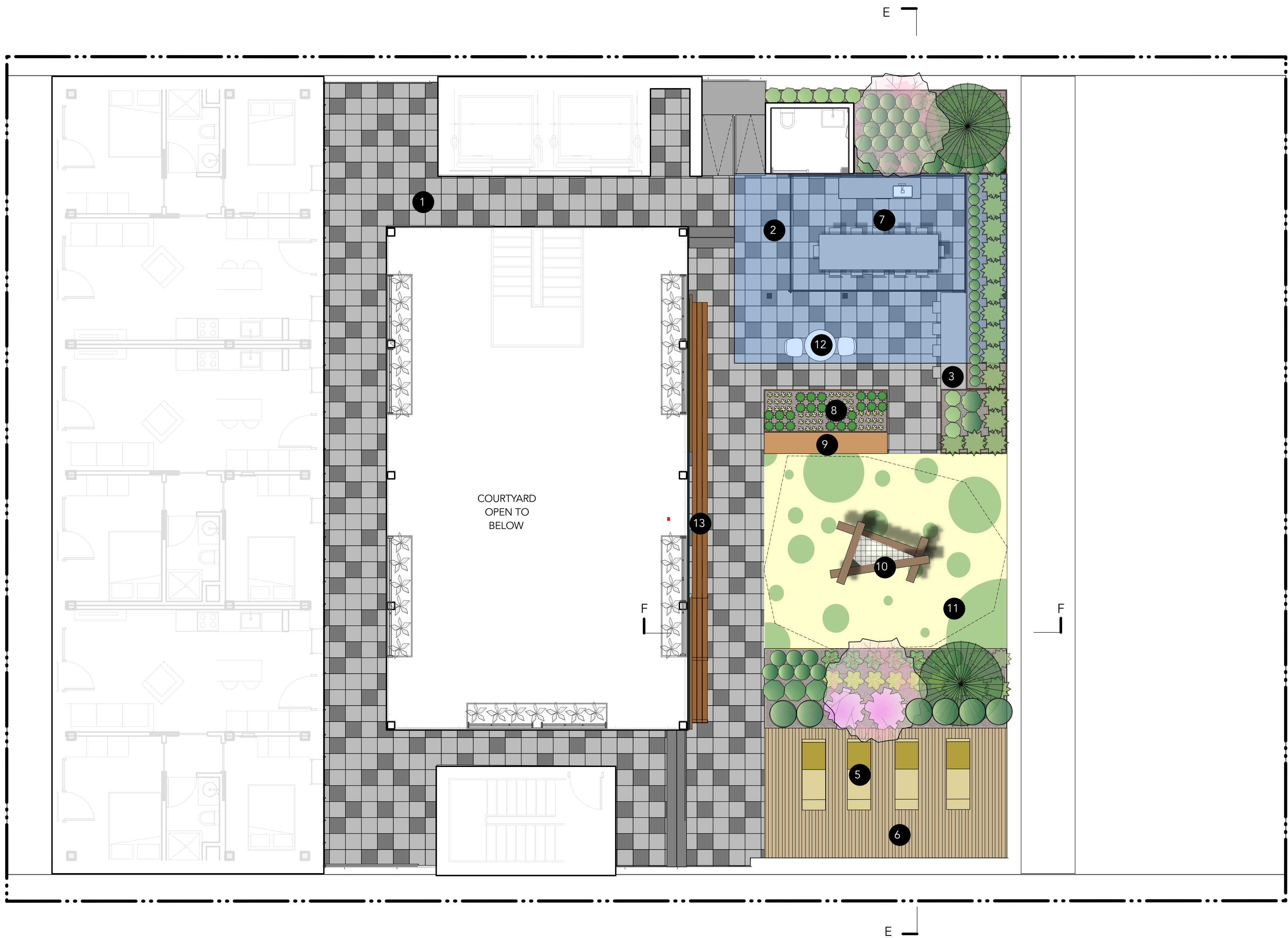


- LEGEND:
- 1 18"x18"HYDRAPRESSED PAVERS, 30% CHARCOAL & 70% GREY RANDOM PATTERN
 - 2 CUSTOM 42"DEPHT ALUMINUM PLANTER WITH PLANTING, TYP.
 - 3 VERTICAL WIRE CABLE TRELLIS WITH CLIMBING VINES

NOTES:

1. THIS PLAN IS "NOT FOR CONSTRUCTION" AND IS TO BE SUBMITTED FOR REVIEW TO ENGINEERING SERVICES A MINIMUM OF EIGHT WEEKS PRIOR TO THE START OF ANY CONSTRUCTION PROPOSED FOR PUBLIC PROPERTY. NO WORK ON PUBLIC PROPERTY MAY BEGIN UNTIL SUCH PLANS RECEIVE "FOR CONSTRUCTION" APPROVAL AND RELATED PERMITS ARE ISSUED. PLEASE CONTACT ENGINEERING, DEVELOPMENT SERVICES AND/OR YOUR ENGINEERING, BUILDING SITE INSPECTOR FOR DETAILS.

2. HIGH EFFICIENCY IRRIGATION SYSTEM SHALL BE INSTALLED IN ALL PLANTED AREAS.

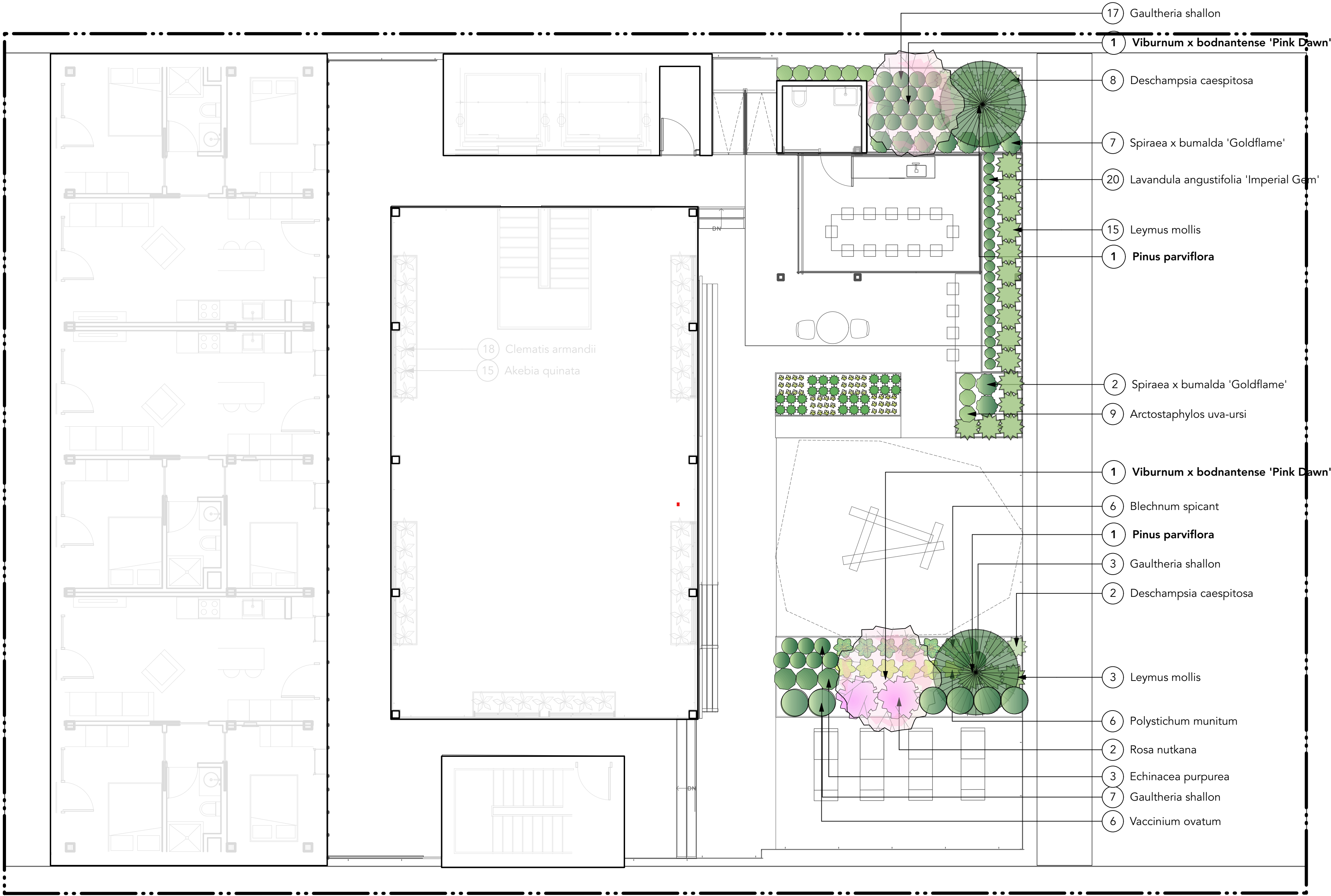


LEGEND:

- 1 18"x18"HYDRAPRESSED PAVERS, 30% CHARCOAL & 70% GREY RANDOM PATTERN
- 2 GLASS CANOPY
- 3 PRECAST CONCRETE HARVEST TABLE
- 4 42" DEPTH POWERCOATED STEEL PLANTER, TYP.
- 5 LOUNGE CHAIR
- 6 WOOD DECK SURFACING
- 7 SEMI-CONDITIONED PAVILION W/ KITCHEN AND TABLE
- 8 URBAN AGRICULTURE PLANTER, , TYP.
- 9 LOG BENCH
- 10 PLAY LOG/ PLAY STRUCTURE WITH NET
- 11 POURED IN PLACE PLAY SURFACE
- 12 OUTDORR SEATING AREA
- 13 WOOD BENCH (LANDSCAPEFORMS, BANCAL BENCH)

NOTES:

- 1. THIS PLAN IS "NOT FOR CONSTRUCTION" AND IS TO BE SUBMITTED FOR REVIEW TO ENGINEERING SERVICES A MINIMUM OF EIGHT WEEKS PRIOR TO THE START OF ANY CONSTRUCTION PROPOSED FOR PUBLIC PROPERTY. NO WORK ON PUBLIC PROPERTY MAY BEGIN UNTIL SUCH PLANS RECEIVE "FOR CONSTRUCTION" APPROVAL AND RELATED PERMITS ARE ISSUED. PLEASE CONTACT ENGINEERING, DEVELOPMENT SERVICES AND/OR YOUR ENGINEERING, BUILDING SITE INSPECTOR FOR DETAILS.
- 2. HIGH EFFICIENCY IRRIGATION SYSTEM SHALL BE INSTALLED IN ALL PLANTED AREAS.

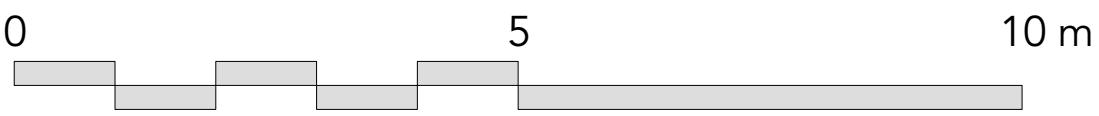


NOTES:

1. THIS PLAN IS "NOT FOR CONSTRUCTION" AND IS TO BE SUBMITTED FOR REVIEW TO ENGINEERING SERVICES A MINIMUM OF EIGHT WEEKS PRIOR TO THE START OF ANY CONSTRUCTION PROPOSED FOR PUBLIC PROPERTY. NO WORK ON PUBLIC PROPERTY MAY BEGIN UNTIL SUCH PLANS RECEIVE "FOR CONSTRUCTION" APPROVAL AND RELATED PERMITS ARE ISSUED. PLEASE CONTACT ENGINEERING, DEVELOPMENT SERVICES AND/OR YOUR ENGINEERING, BUILDING SITE INSPECTOR FOR DETAILS.

2. HIGH EFFICIENCY IRRIGATION SYSTEM SHALL BE INSTALLED IN ALL PLANTED AREAS.

1 Scale: 1:75



PLANTING LIST:

DECIDUOUS TREES:

Quantity	Latin Name	Common Name	Scheduled Size	Spacing	Notes
1	Magnolia stellata 'Royal Star'	Royal Star Magnolia	7cm cal.	As shown	B&B Specimen

CONIFERS:

1	Thuja plicata	Western Red Cedar	#1 Pot	As shown	B&B
2	Pinus parviflora	Japanese White Pine	4m ht.	As shown	B&B Specimen

SHRUBS:

5	Viburnum x bodnantense 'Pink Dawn'	Pink Dawn Viburnum	#5 Pot	As shown	Specimen.
6	Vaccinium ovatum	Evergreen Huckleberry	#3 Pot	800mm o.c.	
4	Symphoricarpos alba	Snowberry	#3 Pot	800mm o.c.	
9	Spiraea x bumalda 'Goldflame'	Goldflame Spirea	#2 Pot	As shown	
2	Rosa nutkana	Nootka Rose	#5 Pot	450mm o.c.	
21	Maianthemum racemosa	False Solomon's Seal	#1 Pot	450mm o.c.	
133	Gaultheria shallon	Salal	#1 Pot	400mm o.c.	
8	Buxus sempervirens	Common Boxwood	#1 Pot	400mm o.c.	

PERENNIALS, GRASSES, GROUNDCOVER,VINES:

58	Akebia quinata	Chocolate Vine	#3 Pot	400mm o.c.	
311	Arctostaphylos uva-ursi	Bearberry, Kinnikinnick	#1 Pot	400mm o.c.	
118	Athyrium niponicum 'Pictum'	Japanese Painted Fern	#1 pot	900mm o.c.	
32	Blechnum spicant	Deer Fern	#2 Pot	450mmo.c.	
79	Clematis armandii	Evergreen Clematis	#1 Pot	400mm o.c.	
10	Deschampsia caespitosa	Tufted Hair Grass	#2 Pot	400mm o.c.	
3	Echinacea purpurea	Purple Coneflower	#1 Pot	450mm o.c.	
83	Hosta sieboldiana 'Elegans'	Elegans Plantain Lily	#1 Pot	450mm o.c.	
20	Lavandula angustifolia 'Imperial Gem'	English Lavender 'Imperial Gem'	#1 Pot	450mm o.c.	
34	Leymus mollis	Dune Grass	#3 Pot	450mm o.c.	
183	Oxalis oregana	Rewood Sorrel	#1 Pot	900mm o.c.	
80	Polystichum munitum	Western sword fern	#3 Pot	900mm o.c.	

NOTES:

1. ALL PLANT MATERIAL AND LANDSCAPING PRACTICES SHALL BE COMPLIANT WITH THE LATEST EDITION OF THE BCLNA NURSERY STANDARD.
2. IN CASE OF DISCREPANCY BETWEEN PLANT INFORMATION ON THE LIST AND ON THE PLAN, THE LATTER SHALL PREVAIL.
3. FINAL SOFTSCAPE AND GRADING LAYOUTS AS WELL AS LOCATION AND SPACING TO BE APPROVED BY LANDSCAPE ARCHITECT IN THE FIELD PRIOR TO INSTALLATION.
4. ALL PLANT MATERIAL TO BE MANUALLY WATERED FROM START OF INSTALLATION THROUGH THE END OF THE WARRANTY PERIOD.
5. INSTALL TREE PROTECTION FENCING AROUND ALL EXISTING TREES TO CITY STANDARDS, INSTALL TREE PROTECTION FENCING ON NEW PLANTING IF PHASED INSTALLATION IS REQUIRED.
6. FINAL LOCATION, QUANTITY, TREE SPECIES TO THE SATISFACTION OF THE GENERAL MANAGER OF ENGINEERING. CONTACT EILEEN CURRAN AT 604-871-6131 TO CONFIRM STREET TREE LOCATIONS.
7. NEW TREE MUST BE OF GOOD STANDARD, MINIMUM 6 CM CALLIPER AND INSTALLED WITH APPROVED ROOT BARRIERS, TREE GUARDS AND APPROPRIATE SOIL.
8. ROOT BARRIERS SHALL BE 8FT LONG AND 18 INCHES DEEP. PLANTING DEPTH PF ROOT BALL MUST BE BELOW SIDEWALK GRADE. NEW STREET TREES TO BE CONFIRMED PRIOR TO ISSUANCE OF THE BUILDING PERMIT.
9. CALL CABOT LYFORD AT PARK BOARD AT 311 FOR TREE SPECIES SELECTION AND PLANTING REQUIREMENTS. PARK BOARD TO INSPECT AND APPROVE AFTER TREE PLANTING COMPLETION.

PLANTING IMAGES

CONIFER



DECIDUOUS TREE



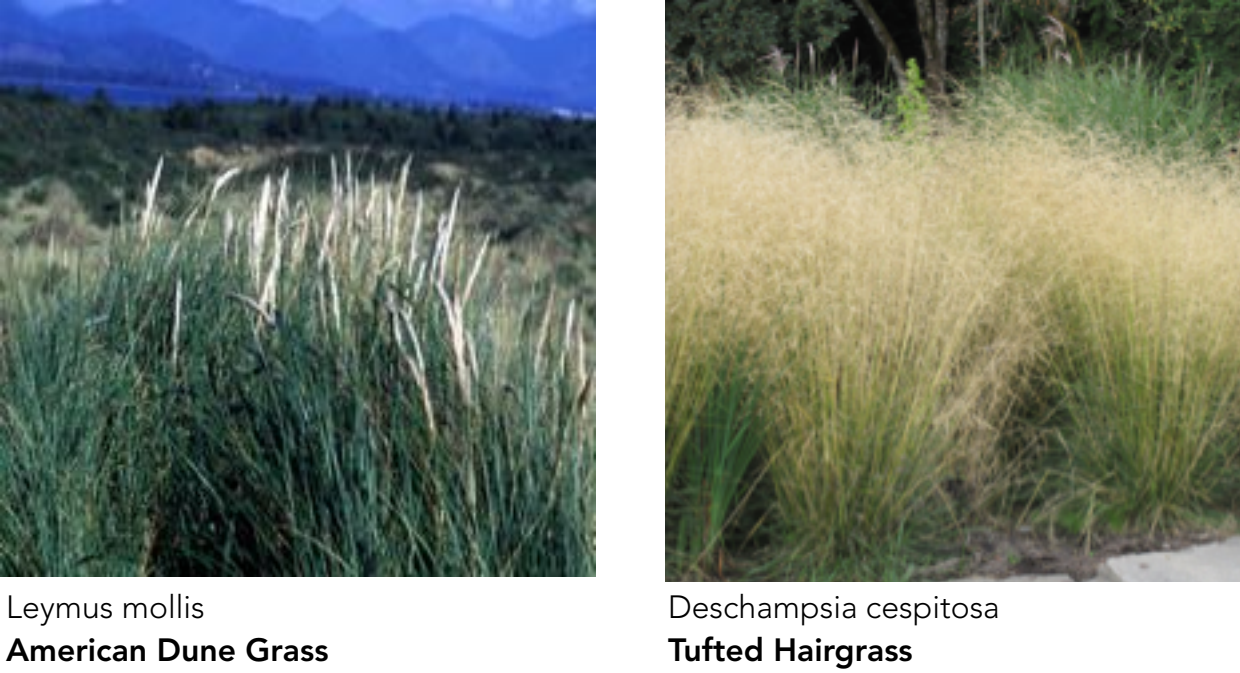
PERENNIAL/FERN



SHRUB



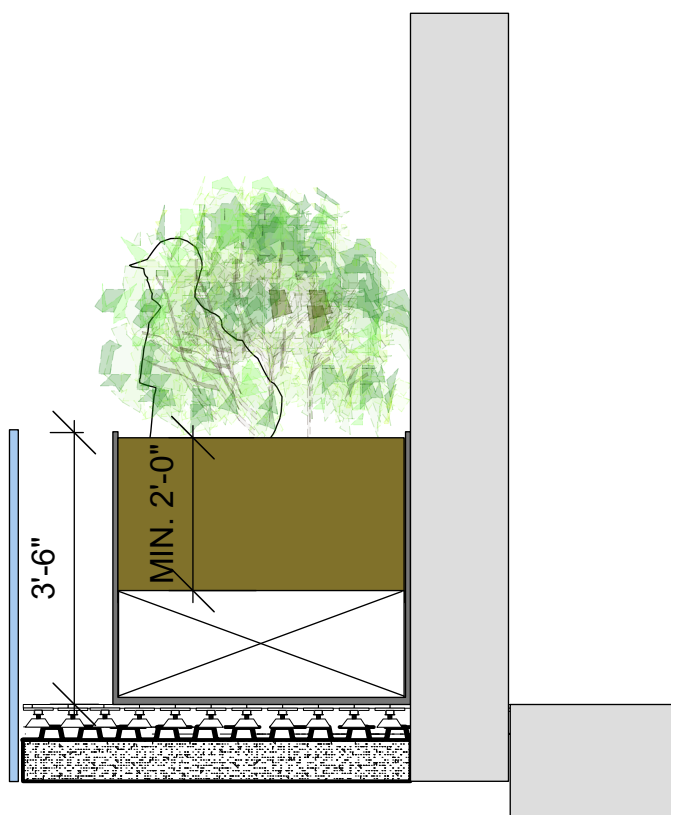
GRASS



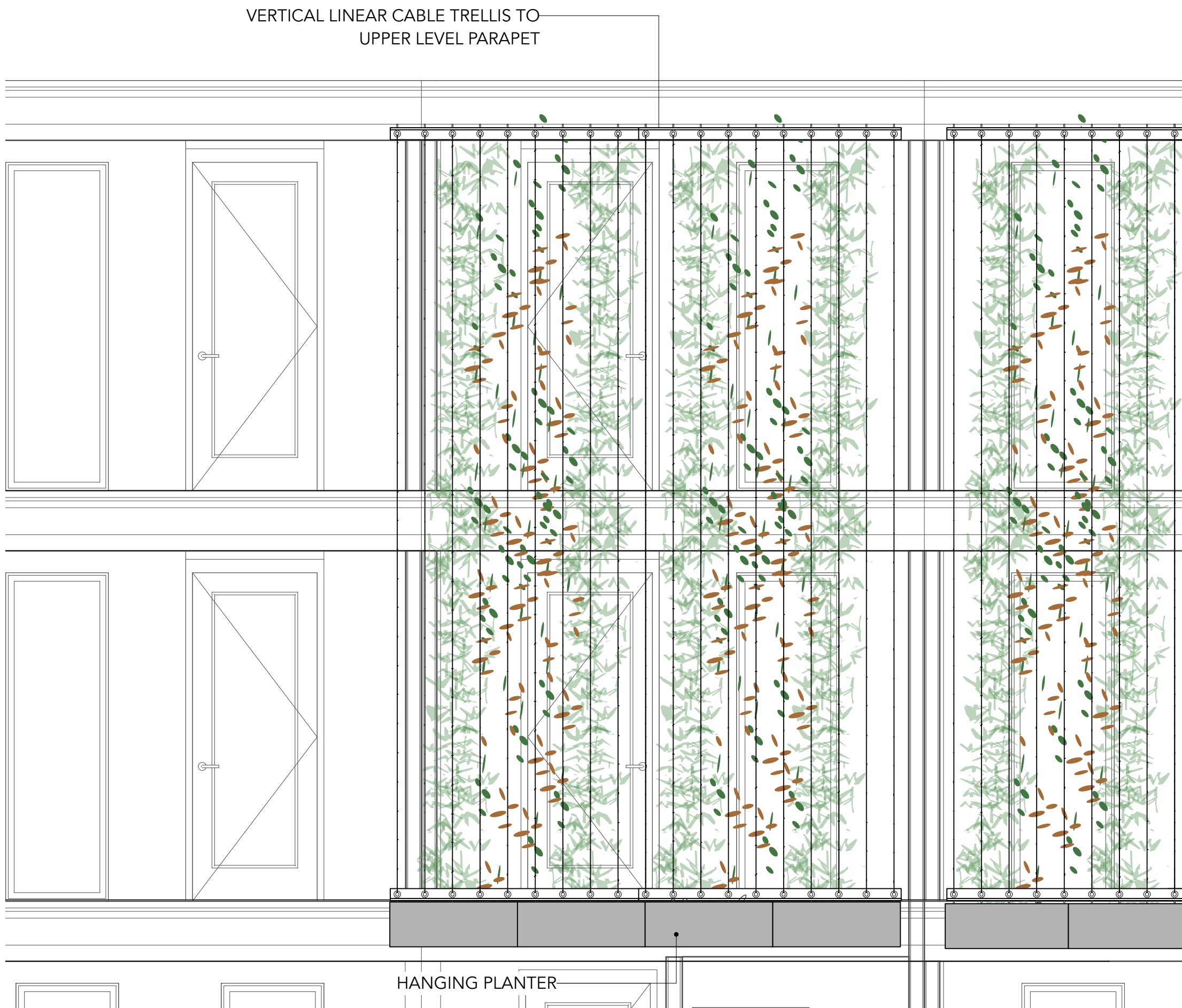
VINE



1 SECTION A-A 42" DEPTH ALUMINUM PLANTER
Scale: 1:30



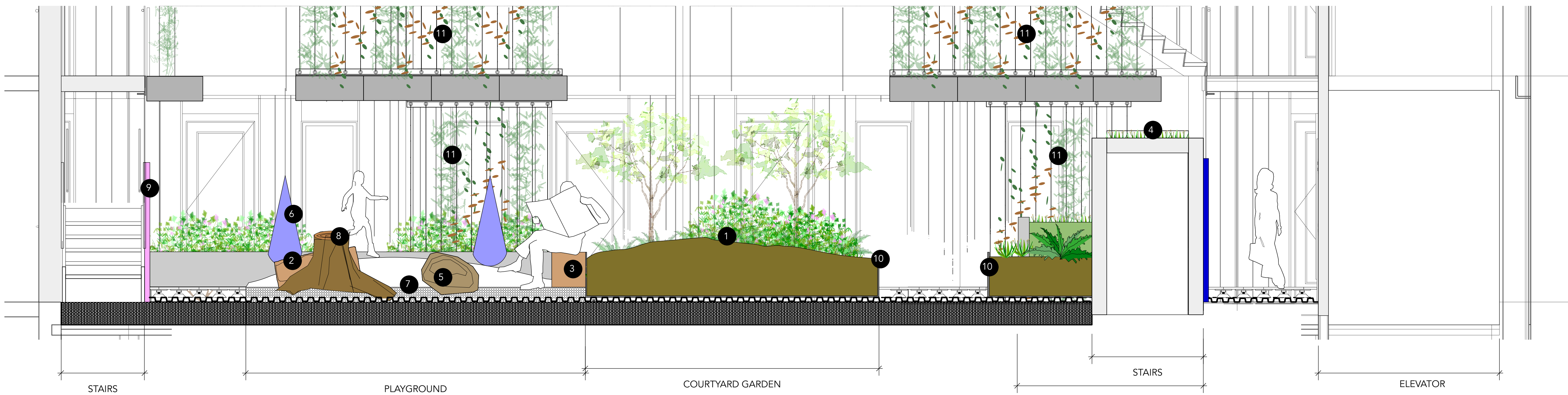
2 SECTION C-C VERTICAL CABLE TRELLIS
Scale: 1:30



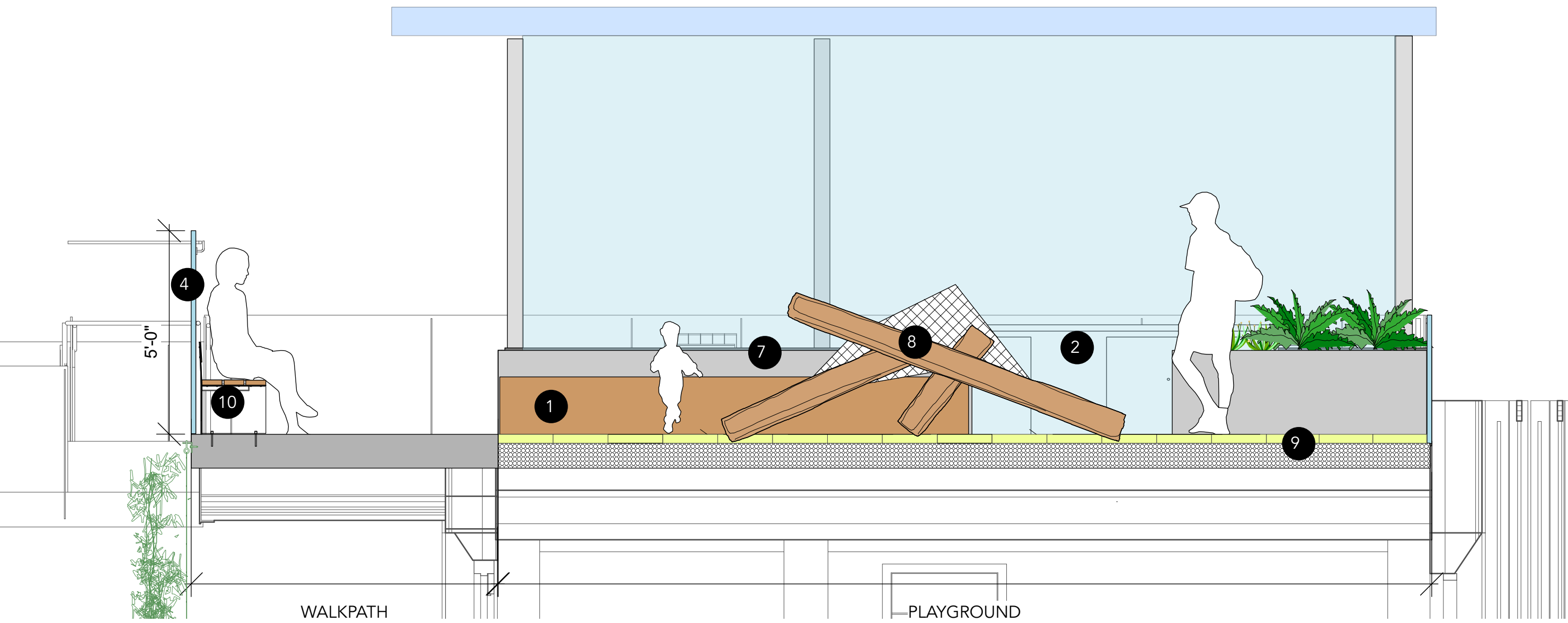
3 SECTION D-D VERTICAL CABLE TRELLIS
Scale: 1:30



4 SECTION B-B ON LEVEL 3
Scale: 1:30

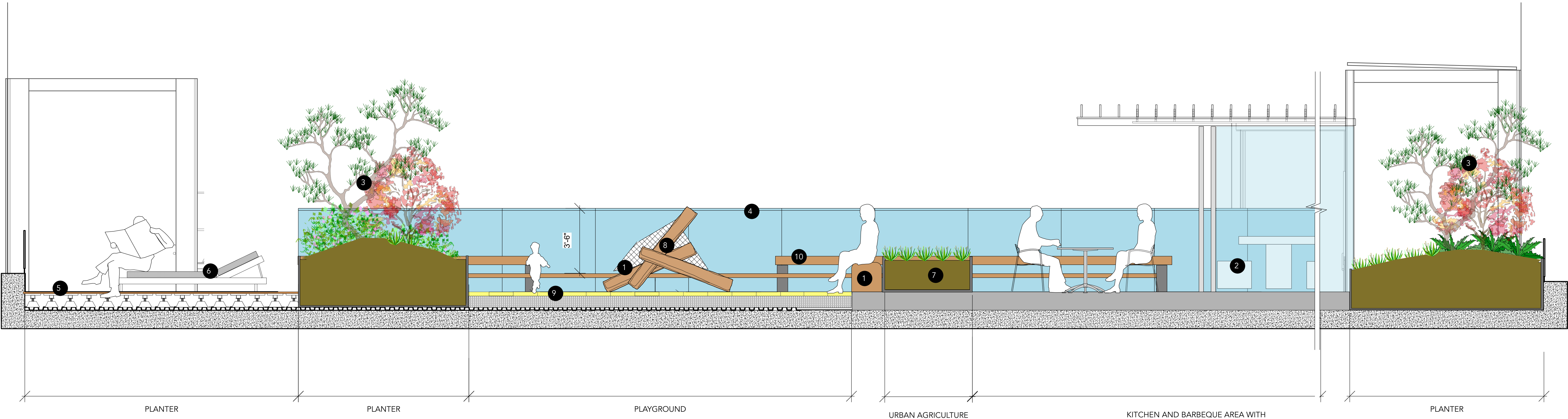


- LEGEND:**
- 1 COURTYARD PLANTING WITH BERM
 - 2 PLAY LOGS, TYP.
 - 3 TIMBER BENCH, TYP.
 - 4 GREEN ROOF
 - 5 CLIMBING BOULDERS, TYP.
 - 6 CHILDREN'S HANGING POD, TYP.
 - 7 PIP FALL SURFACE WITH BERM
 - 8 CLIMBING ROOT
 - 9 PLAY WALL
 - 10 24" DEPTH METAL PLANTER WITH PLANTING
 - 11 VERTICAL WIRE CABLE TRELLIS WITH CLIMBING VINES



- LEGEND:**
- 1 LOG BENCH
 - 2 KITCHEN AND BARBEQUE AREA WITH SINK ,REFER TO ARCHITECTURE
 - 3 NATIVE TREES AND PLANTING ON RAISED BERM
 - 4 60" HEIGHT RAILINGS, TYP.
 - 5 WOOD DECK
 - 6 LOUNGE CHAIR
 - 7 URBAN AGRICULTURE PLANTER
 - 8 PLAY LOG/ PLAY STRUCTURE WITH NET
 - 9 POURED IN PLACE PLAY SURFACE
 - 10 WOOD BENCH (LANDSCAPEFORMS, BANCAL BENCH)

1 SECTION F-F ON ROOFTOP
Scale: 1:30



2 SECTION E-E ON ROOFTOP
Scale: 1:30



METAL PRIVACY FENCE



METAL PLANTER



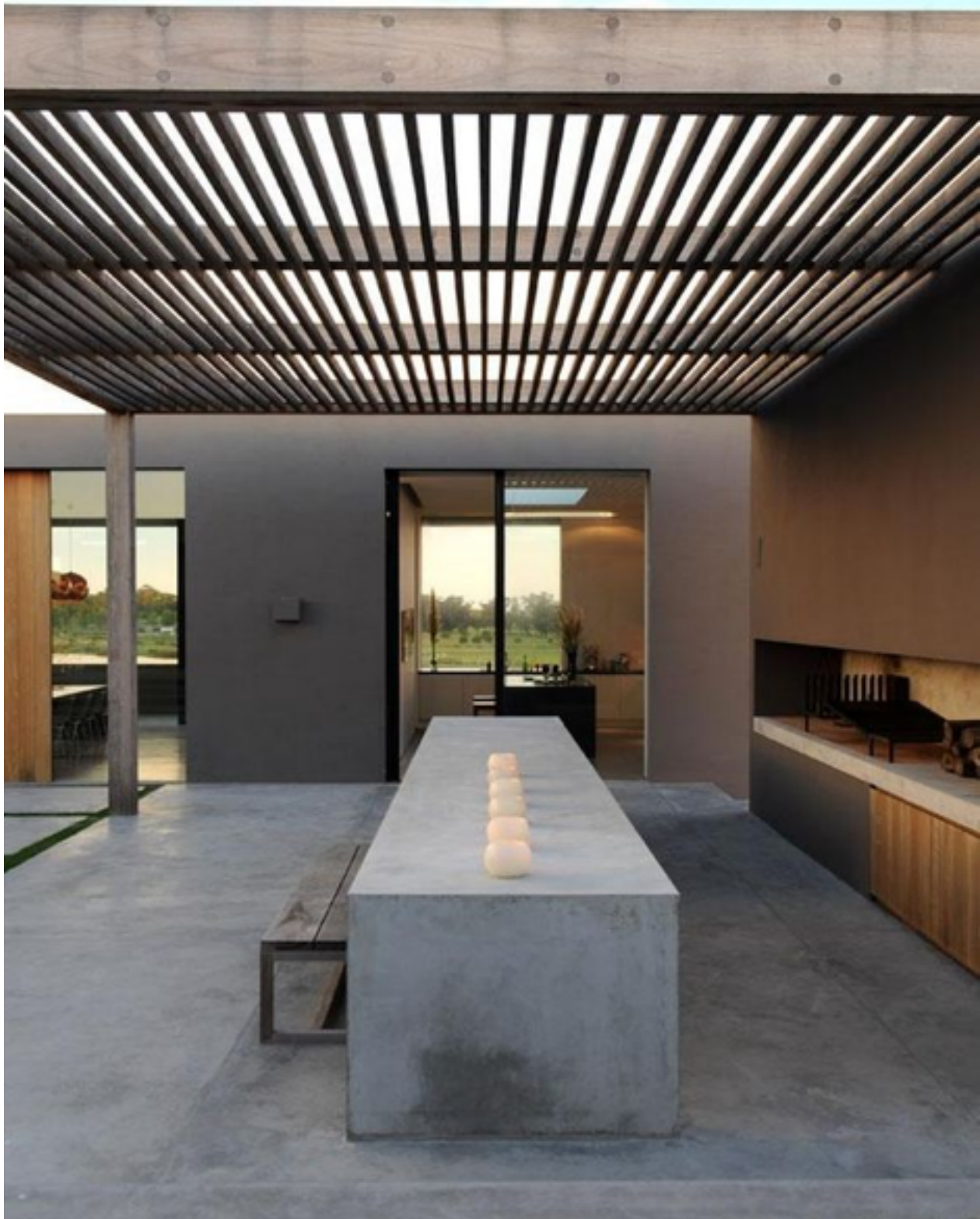
LOG BENCH



VERTICAL WIRE CABLE TRELLIS WITH CLIMBING VINES



CHILDREN'S HANGING POD



PRECAST CONCRETE HARVEST TABLE



PLAY STRUCTURE WITH NET



WOOD BENCH (LANDSCAPEFORMS, BANCAL BENCH)