

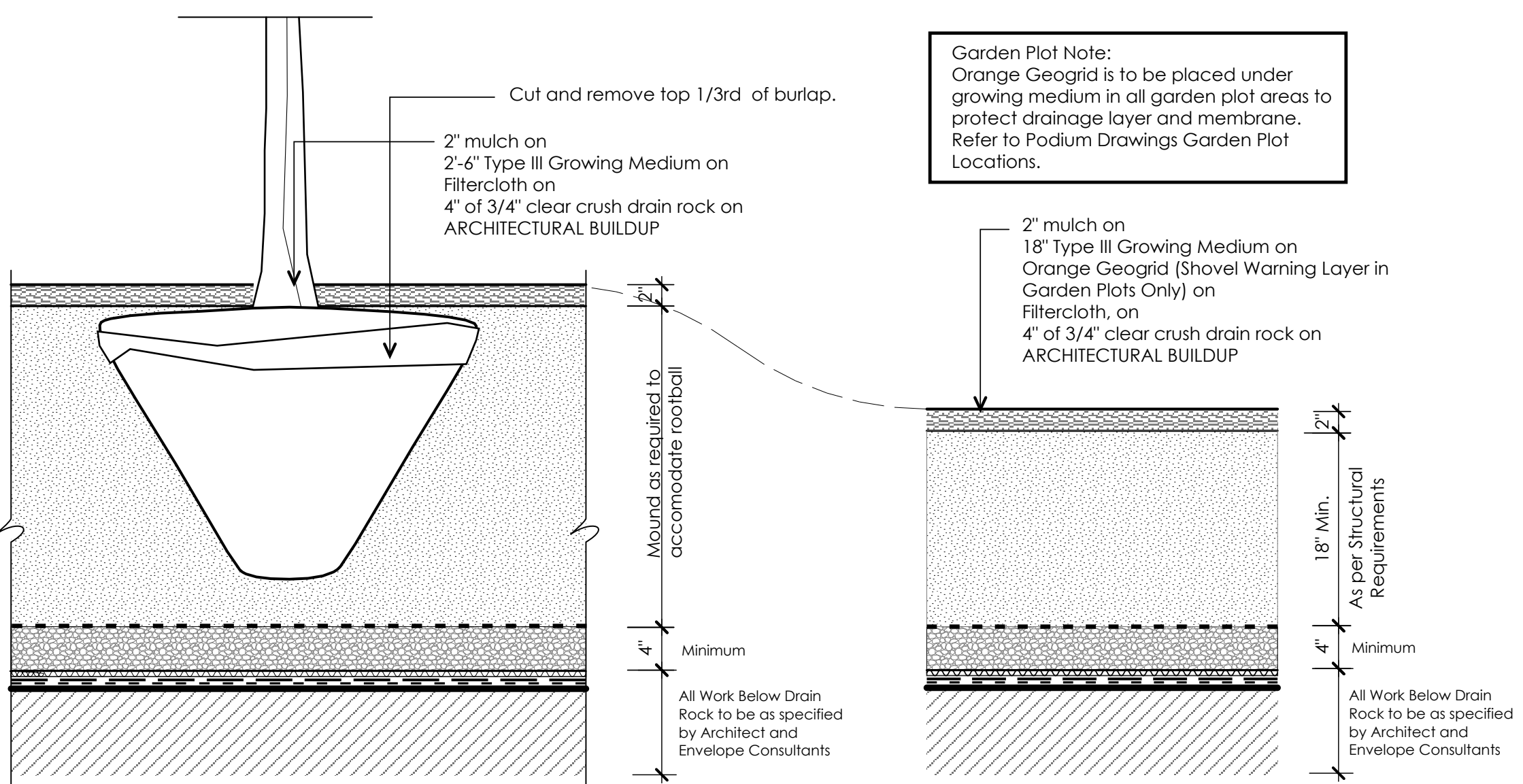
**Ld-01** Typical Tree Planting  
Scale: nts

**Ld-02** Sodded Lawn on Grade  
Scale: 1" = 1'-0"

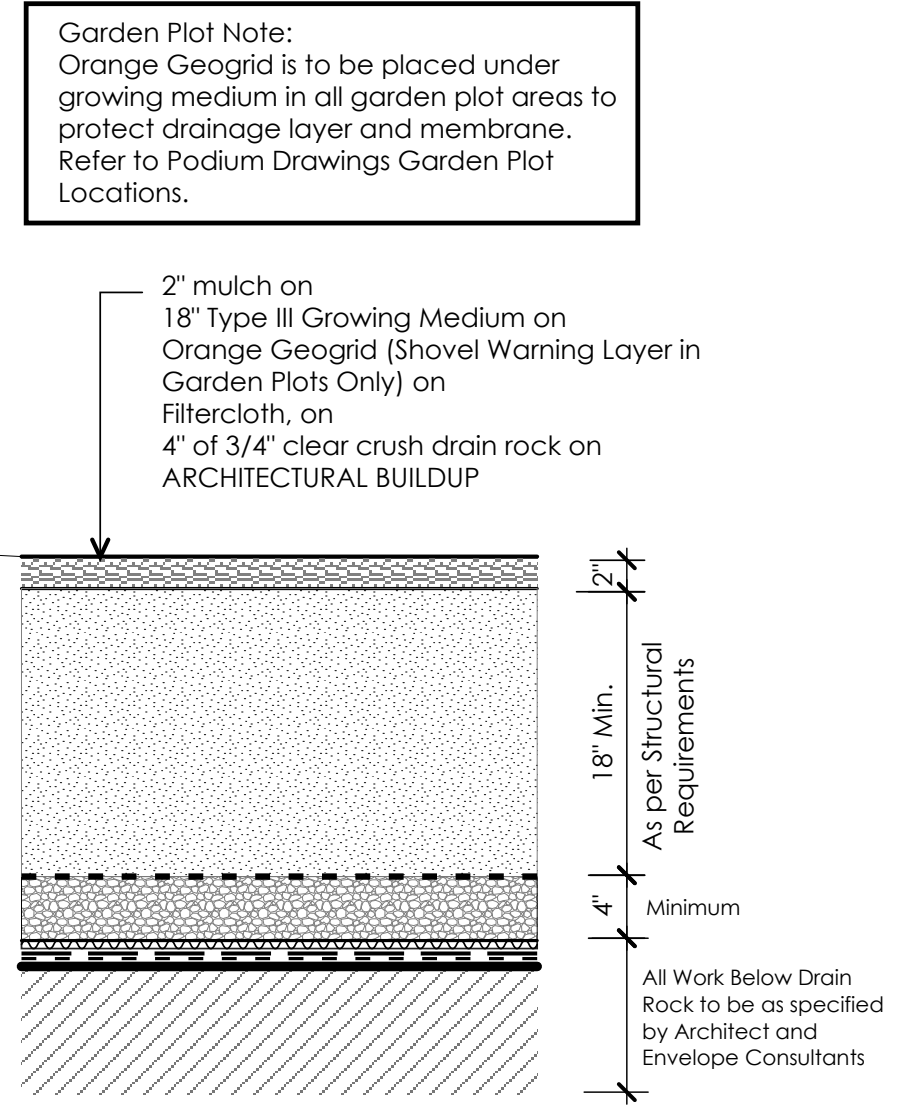
**Ld-03** Sodded Lawn on Slab  
Scale: 1" = 1'-0"

**Ld-04** Shrub Planting on Grade  
Scale: 1" = 1'-0"

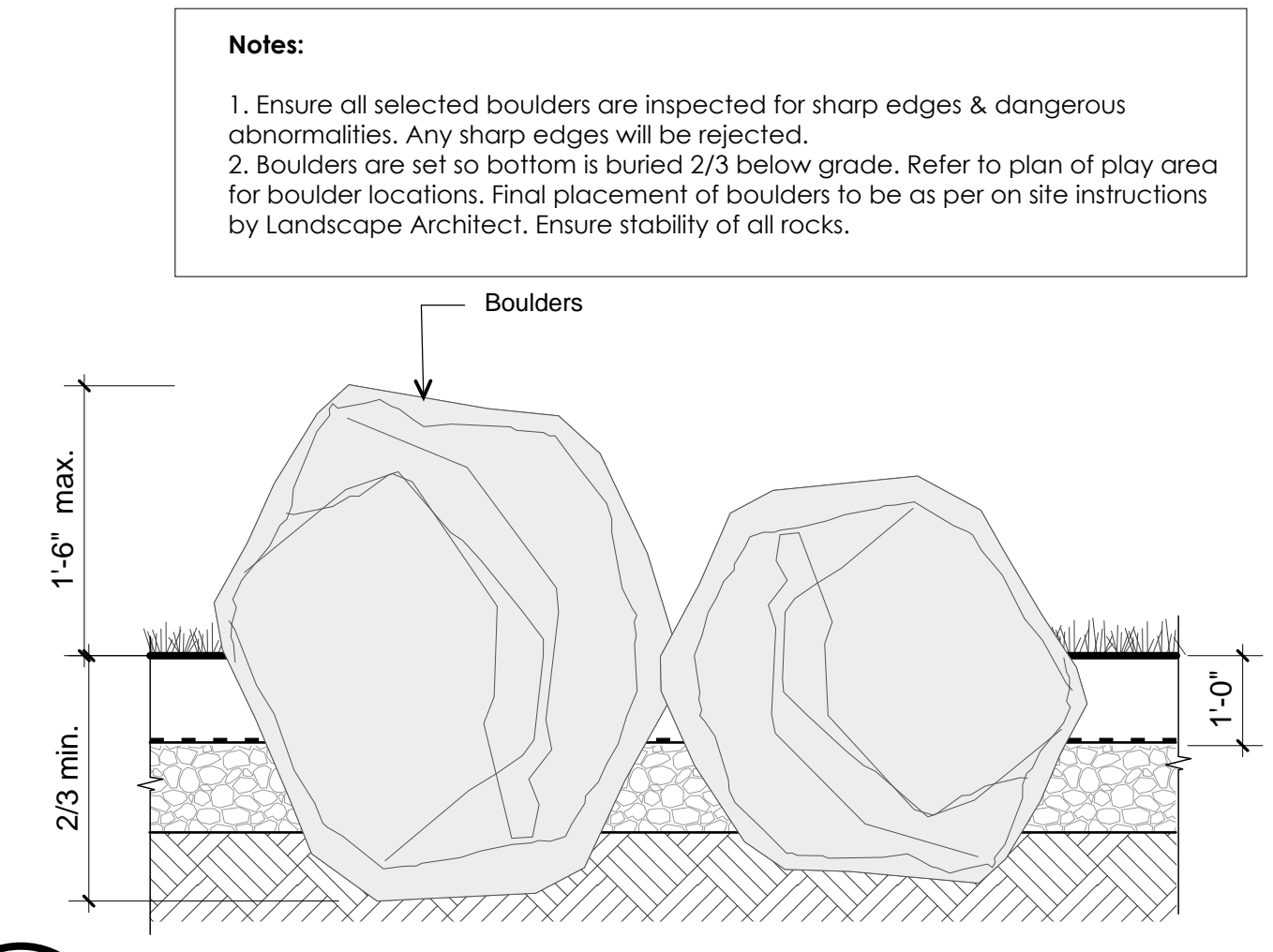
- General Notes:**
1. Do not cut Leader.
  2. Protect tree from damage during planting. Ensure rootball protected from Sun, Frost or Dessication.
  3. Ensure tree location does not conflict with Underground Services. "Call before digging".
  4. All street trees to be staked with 2 - 100mmØ x 2.5m long cedar stakes. Minimum depth of stake embedment is 1m. Ensure stakes do not penetrate or damage rootball. Ensure all stakes are aligned parallel to sidewalk/road on tree pit centreline.
  5. Provide min. 5 cubic meters of growing medium per tree.
  6. Refer to Growing Medium Chart below for surface area depth of Growing Medium.



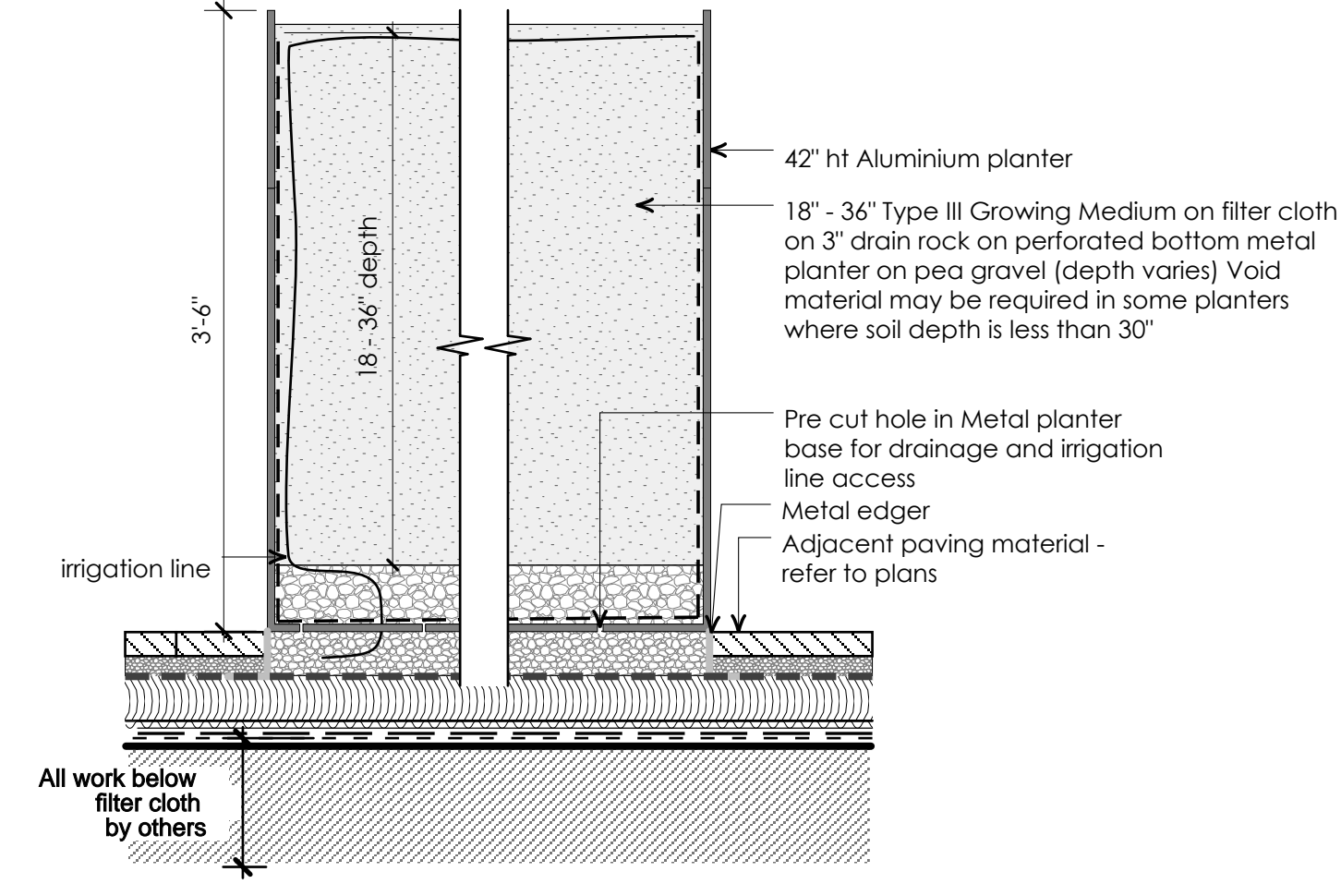
**Ld-05** Tree Planting on Slab, typ.  
Scale: 1" = 1'-0"



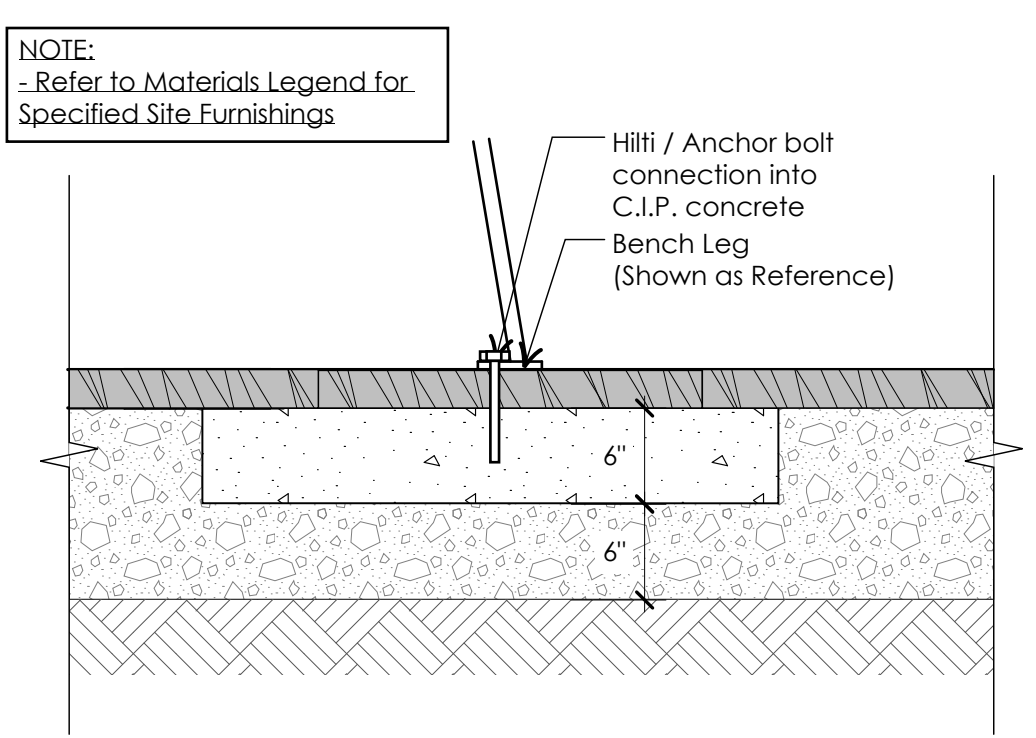
**Ld-06** Shrub Planting on Slab, typ.  
Scale: 1" = 1'-0"



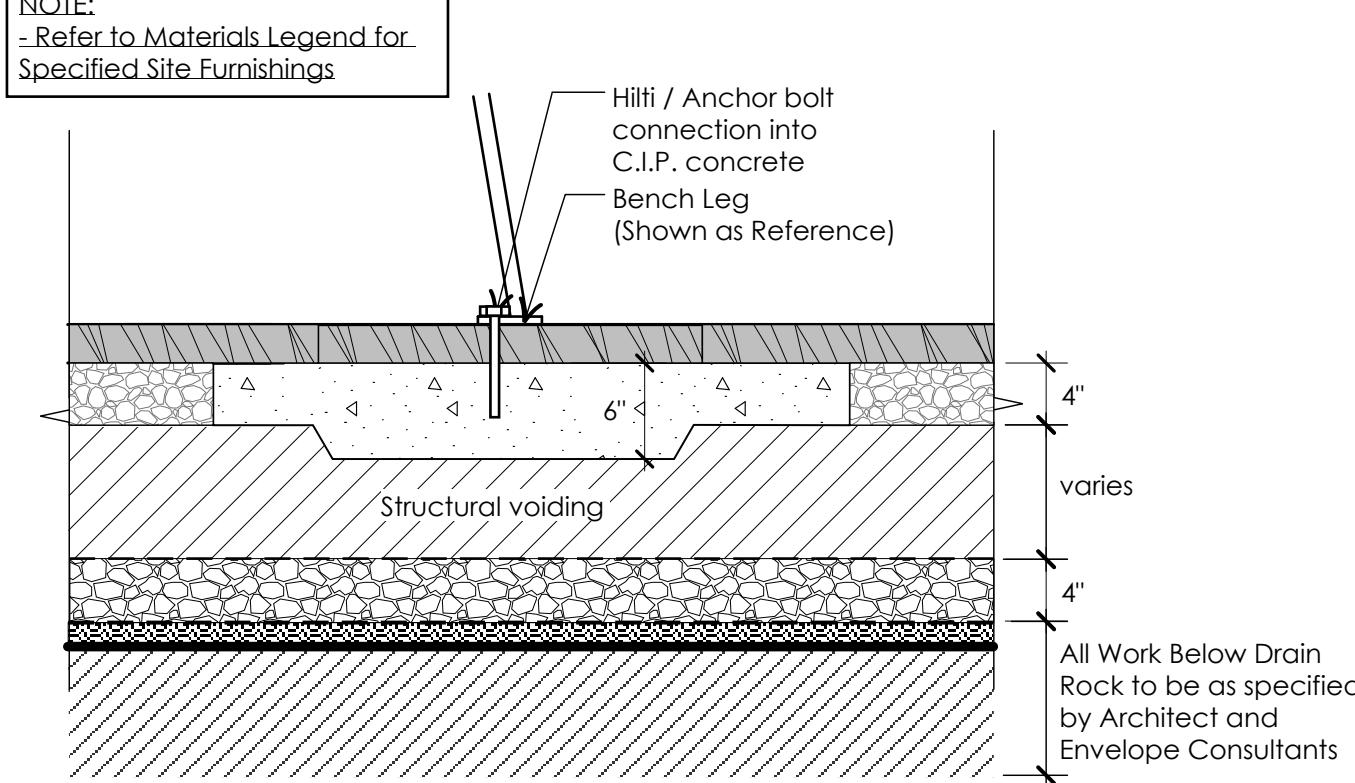
**Ld-07** Landscape Boulder  
Scale: 1" = 1'-0"



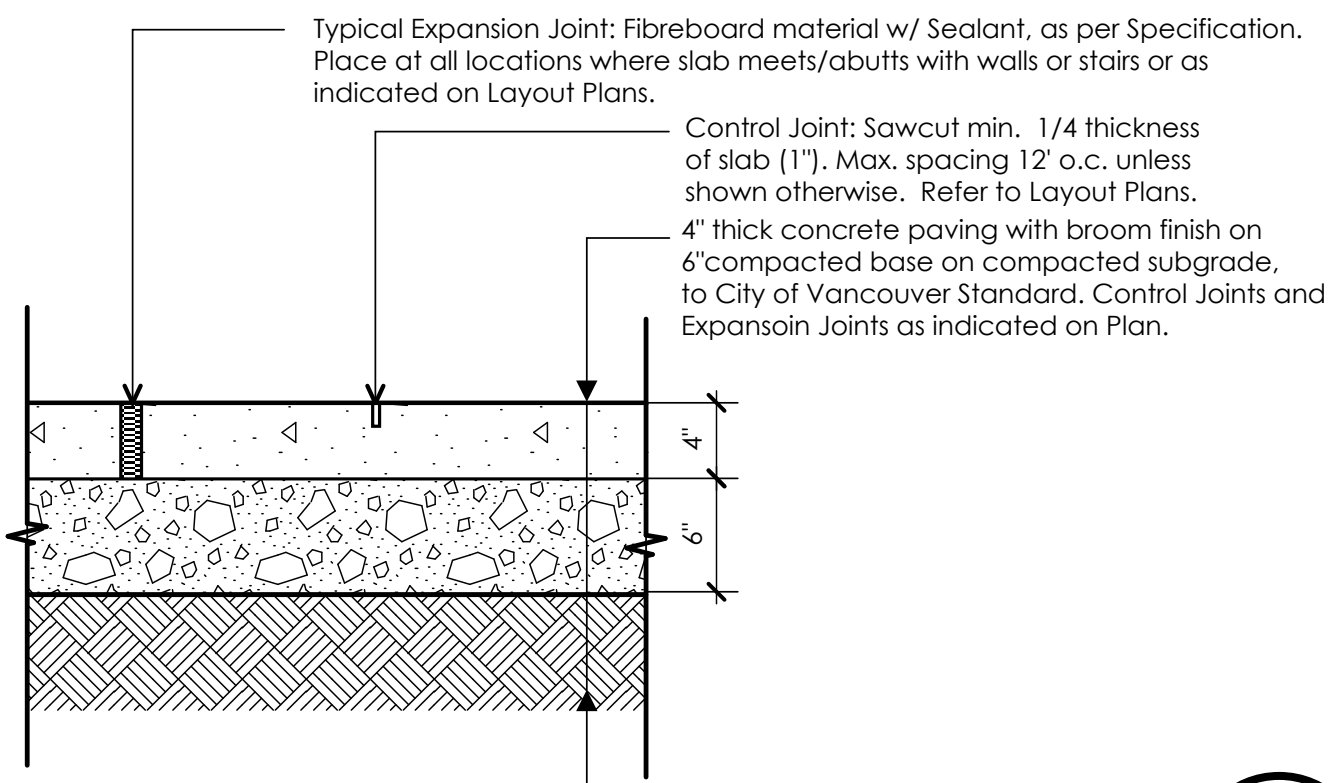
**Ld-08** Custom Planter with Irrigation  
Scale: 1" = 1'-0"



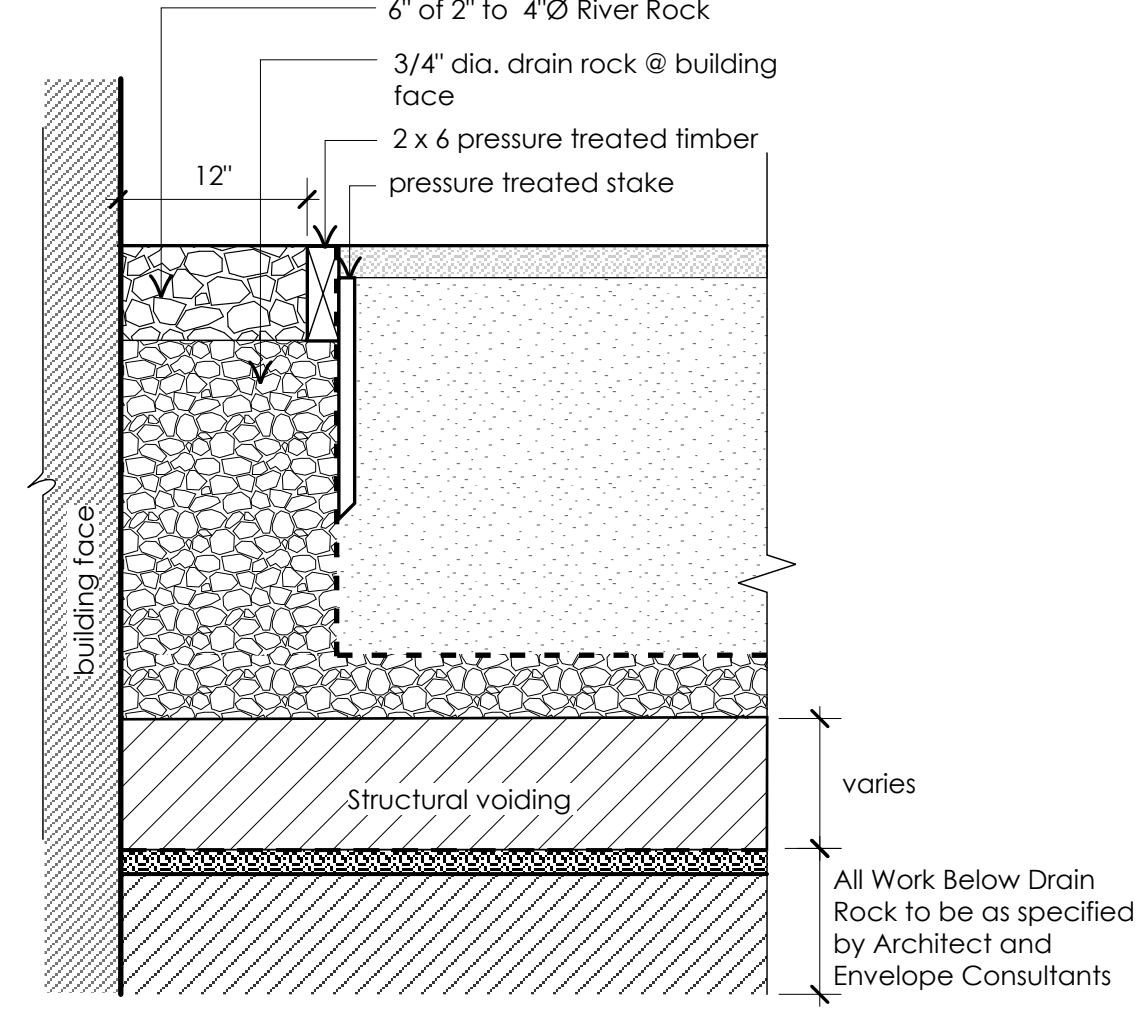
**Ld-09** Site Furniture Connection on grade  
Scale: 1" = 1'-0"



**Ld-10** Site Furniture Connection on slab  
Scale: 1" = 1'-0"



**Ld-11** Concrete Sidewalk to CoV Standards  
Scale: 1" = 1'-0"



**Ld-12** Gravel Drip Strip at Building Face  
Scale: 1" = 1'-0"

<b>05</b>	<b>2019-05-17</b>	<b>Re-issue for DP</b>
04	2019-05-09	Issue for Client Review
03	2018-06-28	DP Prior To Submission
02	2018-01-15	DP Submission
01	2017-12-22	Progress Plot
no.:	date:	Item:

Revisions:



Durante Kreuk Ltd.  
102 - 1637 West 5th Avenue  
Vancouver BC V6J 1N5  
t: 604 684 4611  
f: 604 684 0577  
www.dkl.bc.ca

Project:

**BY THE BAY**

**1289 NICOLA STREET,  
VANCOUVER BC**  
(formerly 1509-33 Harwood St)

Drawn by:	AB
Checked by:	PK
Date:	May 15, 2019
Scale:	As Shown

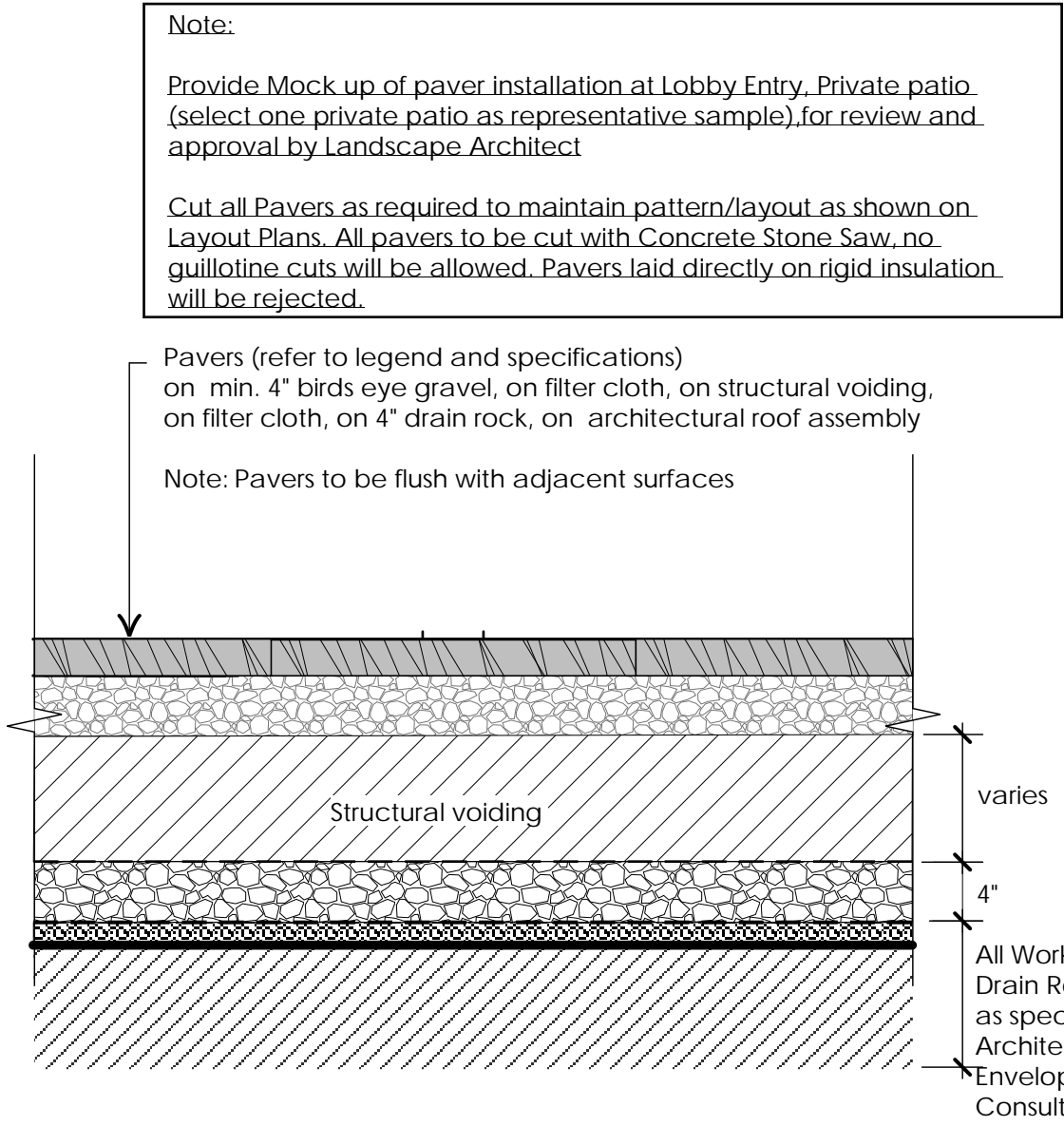
Drawing Title:

**DETAILS**

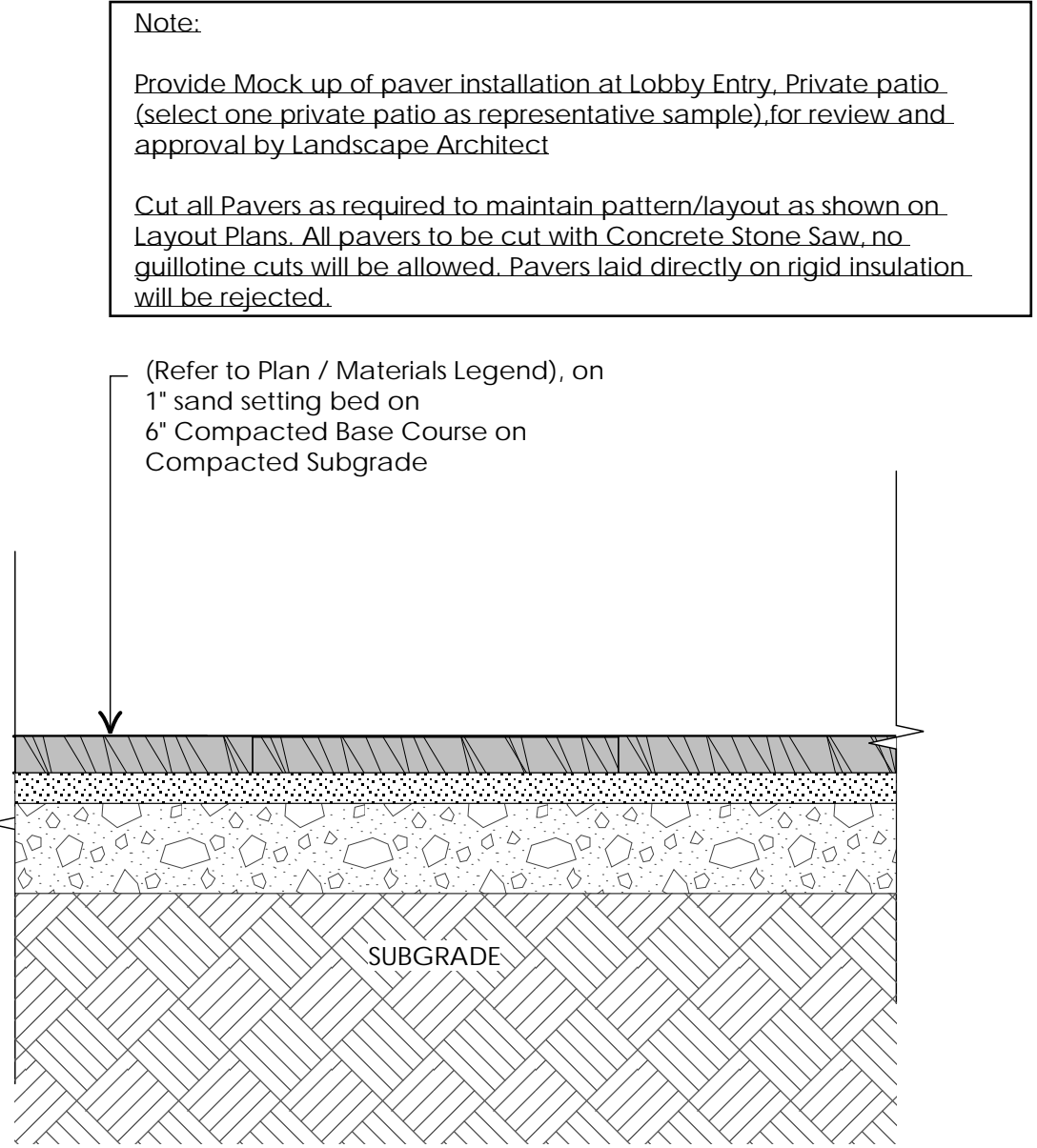
Project No.:	17107
Sheet No.:	



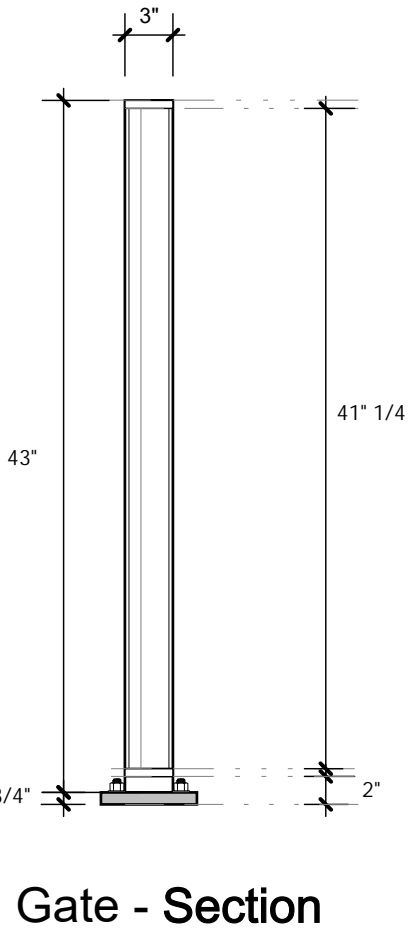
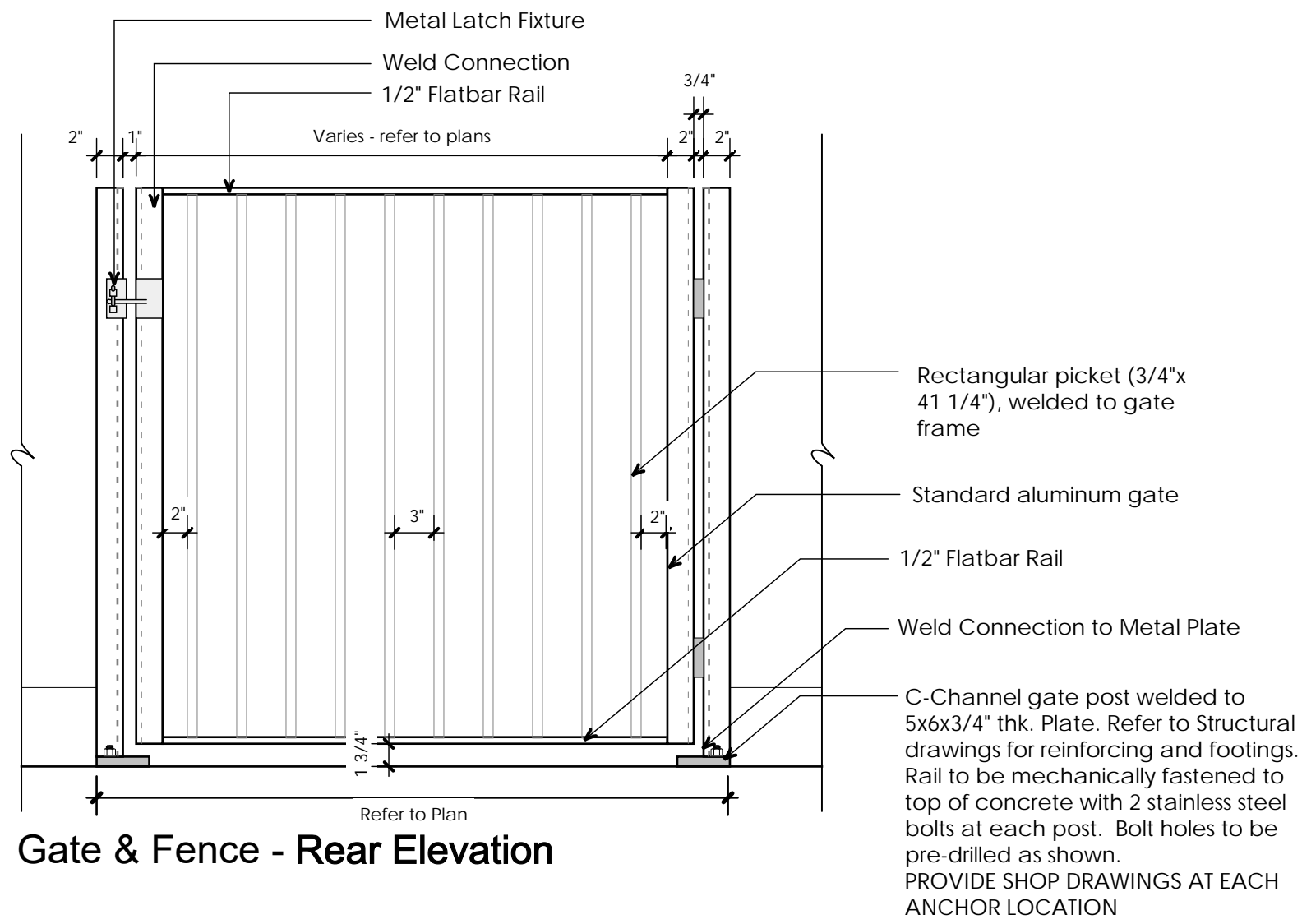
Ld-01 Paving Slabs over Parkade  
Scale: 1" = 1'-0"



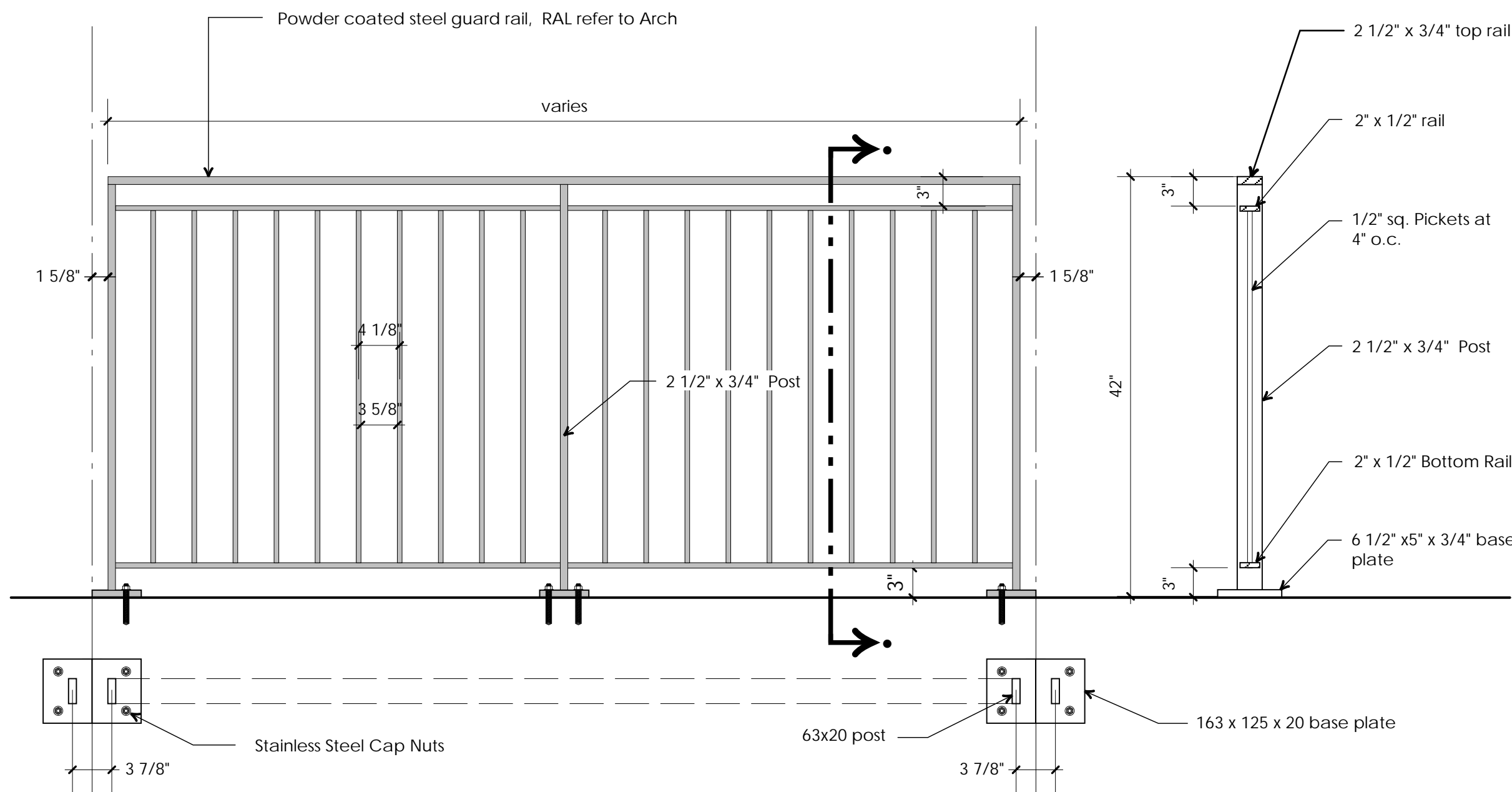
Ld-02 Paving Slabs on grade  
Scale: 1" = 1'-0"



Ld-03 Patio Entry Gates  
Scale: 1" = 1'-0"



- Metalwork Notes:
1. Submit Sealed/Engineering shop drawings for review and approval for all metalwork prior to fabrication and in accordance with specification 05 50 00.
  2. Confirm all dimensions on site. Modify as required to maintain design intent.
  3. Consultant to approve all metalwork at fabrication prior to paint application.
  4. Steel metalwork other than stainless steel to be powdercoated as noted unless otherwise specified.
  5. All metal components to be cut or drilled; all weld faces ground smooth prior to any powdercoat application.
  6. Powder coated metal work assemblies to be all-welded construction.
  7. RAL color - refer to architecture drawings. Provide paint color samples for review and approval prior to application.
  8. All fastening hardware to be stainless steel unless otherwise noted.



Ld-04 Metal Picket Fence  
Scale: 1" = 1'-0"



Ld-05 Lounge Chair - Precedent imagery  
nts



Ld-06 Wood Bench - Precedent imagery  
nts



Ld-07 Movable Planters - Precedent imagery  
nts



Ld-08 Picnic Table - Precedent imagery  
nts

05	2019-05-17	Re-Issue for DP
04	2019-05-09	Issue for Client Review
03	2018-06-28	DP Prior To Submission
02	2018-01-15	DP Submission
01	2017-12-22	Progress Plot
no.:	date:	Item:

Revisions:



Project:

BY THE BAY  
1289 NICOLA STREET,  
VANCOUVER BC  
(formerly 1509-33 Harwood St)

Drawn by: AB

Checked by: PK

Date: May 15, 2019

Scale: As Shown

Drawing Title:

DETAILS

Project No.:

17107

Sheet No.:

L-9.0