

## **APPENDIX G**

### **Proposed “Test Fit” Drawings 2010 BALACLAVA**

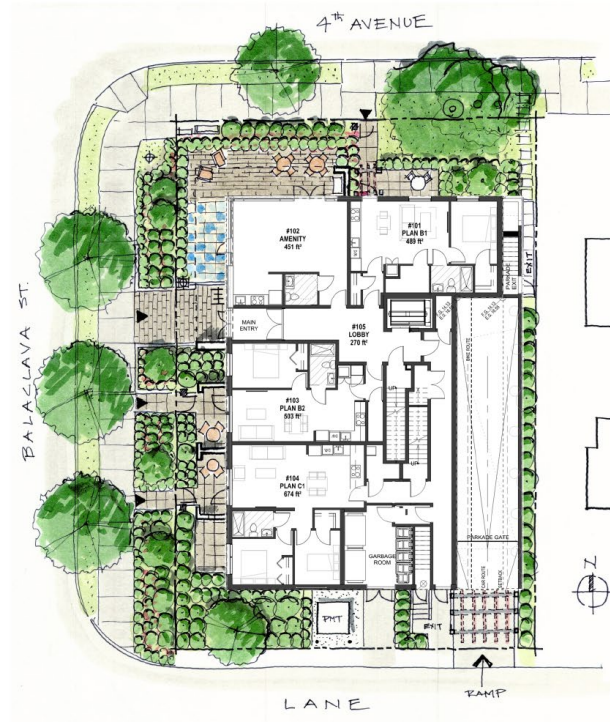
1. SITE PLAN “Test Fit”
2. ELEVATION “Test Fit”
  - a) North
  - b) West
  - c) South
  - d) East
3. Material Precedents

#### **Summary of Proposed “Test Fit” changes:**

- Use of colour and materials to establish a tripartite expression, with a darker base and a visually lighter top floor;
- A two storey brick base incorporated on the north, west and south to relate to the RT-7 homes to the south across the lane;
- Development of a richer texture of cladding materials and soft natural earth tone colour palette, with warm toned brick, horizontal siding and window trims;
- Decorative use of colour to visually break up the east façade interfacing with the adjacent Santa Barbara Apartment Buildings;
- More robust entry canopy to building entry, with smaller canopies over individual unit entries at grade on Balaclava St. and W 4<sup>th</sup> Ave, as well as at the north exit door;
- Canopy feature at parkade entry; and,
- Some additional planting including on the City boulevard.

### Site Plan "Test Fit"

2010 BALACLAVA STREET



EKISTICS  
Architecture

### Elevation "Test Fit"

2010 BALACLAVA STREET



EKISTICS  
Architecture

### Elevation "Test Fit"

2010 BALACLAVA STREET



WEST ELEVATION

EKISTICS  
Architecture

### Elevation "Test Fit"

2010 BALACLAVA STREET



SOUTH ELEVATION

EKISTICS  
Architecture

## Elevation "Test Fit"

2010 BALACLAVA STREET



EAST ELEVATION

EKISTICS  
Architecture

## Material Precedents

2010 BALACLAVA STREET



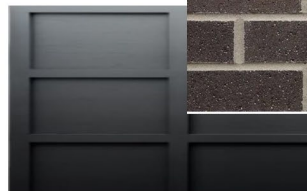
Window trim



Lighting – wall sconce



Aluminum picket railing  
(c/w double top rail)



Dark gray paneling (fiber cement)



Warm toned brick cladding



Light beige lapped siding  
(fiber cement)



Light gray panel c/w reveals  
(fiber cement)

EKISTICS  
Architecture