

From: "Johnston, Sadhu" <Sadhu.Johnston@vancouver.ca>

To: "Direct to Mayor and Council - DL" <CCDTMACDL@vancouver.ca>

Date: 1/25/2017 5:28:32 PM

Subject: Memo - South False Creek Seawall Improvements - Construction and Closure in Sutcliffe Park

Attachments: ENG - Memo to Mayor and Council - South False Creek Seawall Improvements....pdf

Dear Mayor and Council,

Please see the attached memo from Jerry Dobrovolny on South False Creek Seawall Improvements - Construction and Closure in Sutcliffe Park.

A short summary of the memo is as follows:

- In May 2016, Council approved improvements to the South False Creek seawall between Burrard Bridge and Cambie Bridge, with construction to be completed in segments.
- Construction on Segment 3 from Island Park Walk through Sutcliffe Park to Alder Bay Walk will commence on January 30th 2017, and will require a full closure of the seawall to ensure safety of both the public and construction crews.
- Improvements in this segment include widening of the pathway, new paint markings to separate walking and cycling, and new lighting.
- The closure does not affect primary access to any residences or buildings and the seawall will be reopened in time for peak summer usage starting in May 2017.

If you have any questions or concerns, please contact Mayna Vancaillie at 604.871.6934 or mayna.vancaillie@vancouver.ca.

Best,
Sadhu

Sadhu Aufochs Johnston | City Manager
City of Vancouver | 453 W 12th Avenue
Vancouver | BC V5Y 1V4
604.873.7627 | Sadhu.johnston@vancouver.ca
Twitter: sadhuajohnston



CONFIDENTIALITY NOTICE: This message and any accompanying documents contain confidential information intended for a specific individual and purpose. This message is private and protected by law. If you are not the intended recipient, you are hereby notified that any disclosure, copying or distribution, or the taking of any action based on the contents of this information, is strictly prohibited.

If you have any questions or concerns, please contact Mayna Vancaillie at 604.871.6934 or mayna.vancaillie@vancouver.ca



ENGINEERING SERVICES
Jerry Dobrovolny, P.Eng.
City Engineer/General Manager

MEMORANDUM

January 25, 2017

TO: Mayor and Council

CC: Sadhu Johnston, City Manager
Paul Mochrie, Deputy City Manager
Janice MacKenzie, City Clerk
Lynda Graves, Manager, Administration Services, City Manager's Office
Rena Kendall-Craden, Director, Communications
Kevin Quinlan, Chief of Staff, Mayor's Office
Katie Robb, Director, Communications, Mayor's Office
Naveen Girn, Director, Community Relations, Mayor's Office
Lon LaClaire, Director, Transportation

FROM: Jerry Dobrovolny, General Manager of Engineering Services

SUBJECT: South False Creek Seawall Improvements -Construction and Closure in Sutcliffe Park

In May 2016 City Council approved a series of improvements to the South False Creek Seawall between Burrard Bridge and Cambie Bridge (see Attachment 1 for project map). Upgrades are being completed this year in segments, with no construction during the summer months of peak seawall use.

This memorandum outlines seawall construction activity scheduled for the next three months and pedestrian and cyclist routes in the area while the seawall is closed for construction.

January to May 2017 - Construction from Sutcliffe Park to Alder Bay Walk

Construction is planned to begin January 30th on seawall improvements from Island Park Walk, through Sutcliffe Park to Alder Bay Walk (Segment 3 on Attachment 1 map). The upgrades include:

- Widening the existing five metre paver pathway to six meters with paint markings to separate walking and cycling.
- Replacing pathway lighting, benches and signage.
- Relocating landscaping to make way for the wider path.

Construction does not require removal of any existing trees.

City of Vancouver, Engineering Services
Mailing Address: 320-507 West Broadway
Vancouver, British Columbia V5Z 0B4 Canada
tel: 3-1-1, Outside Vancouver 604.873.7000 fax: 604.873.7200
website: vancouver.ca



During construction, the Sutcliffe Park portion of the seawall must be closed and fenced to ensure public safety. Attachment 2 shows the extent of the closure and the walking, cycling, and construction vehicle routes during construction. Wayfinding signage will be installed on site before the closure to direct pedestrians and cyclists to alternate routes. The closure does not affect primary access to any residences or businesses near the construction area.

Notification letters are being sent or hand delivered to residences and businesses in the area. Corporate Communications will provide information to the media and use the City's social media for broad notification of the seawall closure. General project information is available online at vancouver.ca/seawall.

If you have any questions or concerns, please contact Mayna Vancaillie at 604.871.6934 or mayna.vancaillie@vancouver.ca

A handwritten signature in blue ink, appearing to read 'J. Dobrovolny', is written over a horizontal line.

Jerry W. Dobrovolny, P. Eng, MBA
General Manager, Engineering Services
t. 604.873.7331
e. jerry.dobrovolny@vancouver.ca

ATTACHMENT 1

South False Creek Seawall Improvement Project: Seven Segments

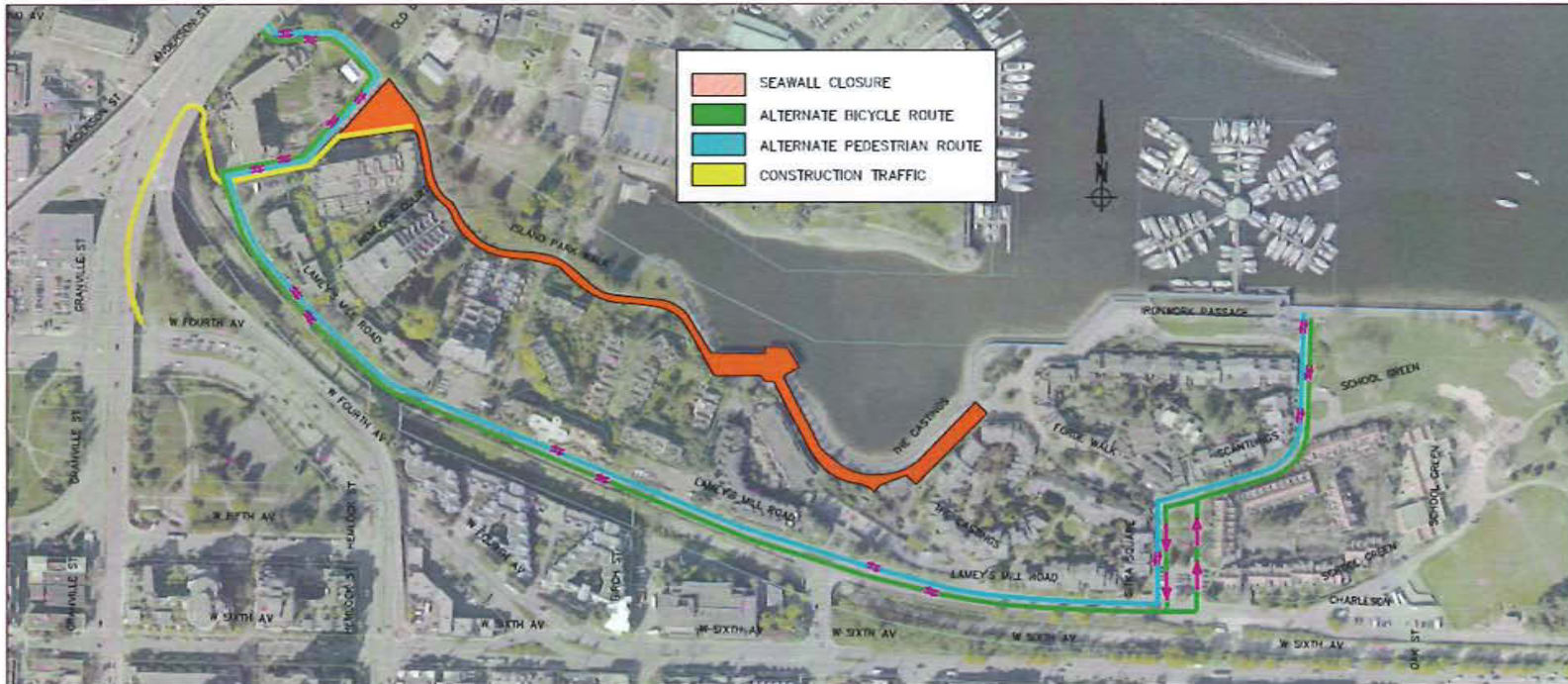


City of Vancouver, Engineering Services
Mailing Address: 320-507 West Broadway
Vancouver, British Columbia V5Z 0B4 Canada
tel: 3-1-1, Outside Vancouver 604.873.7000 fax: 604.873.7200
website: vancouver.ca/engsvcs/



ATTACHMENT 2

Sutcliffe Park Construction Closure and Alternate Routes



City of Vancouver, Engineering Services
Mailing Address: 320-507 West Broadway
Vancouver, British Columbia V5Z 0B4 Canada
tel: 3-1-1, Outside Vancouver 604.873.7000 fax: 604.873.7200
website: vancouver.ca/engsvcs/

