

From: "Nayeri, Ali" <Ali.Nayeri@vancouver.ca>  
To: "Keyzer, Rachel" <Rachel.Keyzer@vancouver.ca>  
Date: 2/15/2018 1:17:11 PM  
Subject: Re: Harbour Green Dock Closure update

Hi Rachel,


We've got some temporary signage in the piles. We are fabricating larger signs right now that would be mounted on the fencing. Signs would be ready by Monday. We may continue to have vessels mooring there (or even abandoned) for a while. Hopefully the fence would discourage that a bit.

Do we have a process of removing abandoned boats?

Thanks,  
Ali

On Feb 15, 2018, at 11:27 AM, Keyzer, Rachel <Rachel.Keyzer@vancouver.ca> wrote:

Great. I was also wondering if there is signage on the dock itself informing the public who approach from the water that the dock is closed. The Rangers inspected the dock this morning and saw a boat moored at the dock. They couldn't see from their vantage point, but if there isn't signage down on the dock, perhaps that should be added?

 **Rachel Keyzer** | Lead Park Ranger | By-Law Enforcement Portfolio  
Vancouver Board of Parks and Recreation | 2099 Beach Avenue  
t. 604.257.8528 | c. s.15(1)(l)  
[rachel.keyzer@vancouver.ca](mailto:rachel.keyzer@vancouver.ca)

This transmission may contain confidential or privileged information, and the sender does not waive any rights and obligations. Redistribution may result in a breach of privacy laws so you are asked not to forward or copy any information herein without permission.

---

**From:** Nayeri, Ali  
**Sent:** Wednesday, February 14, 2018 11:03 AM  
**To:** Keyzer, Rachel  
**Subject:** RE: Harbour Green Dock Closure update

Thanks Rachel. I've let our fabrication shop know. If they have any issues, they will contact the rangers to get access to put up the fencing.

---

**From:** Keyzer, Rachel  
**Sent:** Wednesday, February 14, 2018 8:35 AM  
**To:** Nayeri, Ali  
**Cc:** Araujo, Sev; Collins, Tim  
**Subject:** RE: Harbour Green Dock Closure update

I've asked Rangers to patrol the area when possible, to ensure people are not using the dock. The locks currently placed on the dock are s.15(1)(l)

 **Rachel Keyzer** | Lead Park Ranger | By-Law Enforcement Portfolio  
Vancouver Board of Parks and Recreation | 2099 Beach Avenue  
t. 604.257.8528 | c. s.15(1)(l)



[rachel.keyzer@vancouver.ca](mailto:rachel.keyzer@vancouver.ca)

This transmission may contain confidential or privileged information, and the sender does not waive any rights and obligations. Redistribution may result in a breach of privacy laws so you are asked not to forward or copy any information herein without permission.

---

**From:** Nayeri, Ali  
**Sent:** Tuesday, February 13, 2018 9:22 AM  
**To:** Keyzer, Rachel  
**Cc:** Araujo, Sev; Collins, Tim  
**Subject:** RE: Harbour Green Dock Closure update

Hi Rachel,

We've mounted some temporary signage on the gates and the piles. We are working with the shops to prepare more permanent signage as well as fencing to close off the dock.

Do know what is the key number of the locks on the gates?

Thanks,  
Ali

---

**From:** Keyzer, Rachel  
**Sent:** Tuesday, February 13, 2018 8:30 AM  
**To:** Nayeri, Ali; Araujo, Sev; Collins, Tim  
**Subject:** RE: Harbour Green Dock Closure update

Hello All,

I am back in the office. Would you like me to coordinate signage for the dock, or has that already been taken care of?

 **Rachel Keyzer** | Lead Park Ranger | By-Law Enforcement Portfolio  
Vancouver Board of Parks and Recreation | 2099 Beach Avenue  
t. 604.257.8528 | c. s.15(1)(l)  
[rachel.keyzer@vancouver.ca](mailto:rachel.keyzer@vancouver.ca)

This transmission may contain confidential or privileged information, and the sender does not waive any rights and obligations. Redistribution may result in a breach of privacy laws so you are asked not to forward or copy any information herein without permission.

---

**From:** Nayeri, Ali  
**Sent:** Friday, February 09, 2018 6:20 PM  
**To:** Don, Andrew  
**Cc:** Lead Ranger; Keyzer, Rachel; Araujo, Sev; Mack, Tiina; Collins, Tim  
**Subject:** RE: Harbour Green Dock Closure update

Thanks Andrew for letting me know.  
Have a great weekend,  
Ali

---

**From:** Don, Andrew  
**Sent:** Friday, February 09, 2018 6:17 PM  
**To:** Nayeri, Ali  
**Cc:** Lead Ranger; Keyzer, Rachel  
**Subject:** RE: Harbour Green Dock Closure update

Good evening Ali,

Rachel is not back until Tuesday, so I had PM crews go take photos and send to me. They confirmed that the gates



are locked. I have emailed those photos off to the PB communications email listed below.

**Andrew Don**

Lead Park Ranger  
Vancouver Parks and Recreation  
(t) 604-679-7481  
(e) [Andrew.Don@Vancouver.ca](mailto:Andrew.Don@Vancouver.ca)

This transmission may contain confidential or privileged information, and the sender does not waive any rights and obligations.

Redistribution may result in a breach of privacy laws so you are asked not to forward or copy any information herein without permission.

---

**From:** Nayeri, Ali  
**Sent:** Friday, February 09, 2018 4:42 PM  
**To:** Keyzer, Rachel; Lead Ranger  
**Cc:** Mack, Tiina; Collins, Tim; Wojnarski, Daria; Harper, Margo; Cowles, Chad; Araujo, Sev  
**Subject:** RE: Harbour Green Dock Closure update

Hi Rachel,

Penny from our team is at the dock right now to post some temporary signage on the gates and the piles to indicate that the dock is closed until further notice. Could you ask one of the rangers to visit the dock this afternoon and make sure both gates are locked.

Could you also ask them to take pictures of the locked gates and forward a copy to us and [PB.Communications@vancouver.ca](mailto:PB.Communications@vancouver.ca).

Really appreciate all your help with this situation.

Have a great long weekend,  
Ali

---

**From:** Araujo, Sev  
**Sent:** Friday, February 09, 2018 2:54 PM  
**To:** Keyzer, Rachel; Nayeri, Ali; Chan, Cheryl  
**Cc:** Wilton, Shauna; Mack, Tiina; Collins, Tim; Wojnarski, Daria; Harper, Margo; Sangalang, Ellen; Cowles, Chad; Downie, Alex; Normann, Howard  
**Subject:** Harbour Green Dock Closure update  
**Importance:** High

All

I spoke to Mike at Bowen Island Taxi and while the gate was locked by Rangers due to a 311 safety call, commuters were hoping the fence for a couple of days but it was since opened apparently.

I explained the situation and given it's a long weekend and they do not operate on Monday, we can close gate today **after** their 4:30pm pick up today. I will follow up with an email and asked Mike if he has any questions to email me as I will monitor emails on weekend.

**Ali and Rachel** please coordinate with the temporary signage

**Cheryl**, after our 2 pm meeting with Comms and Dev, Daria is working on some messaging for Commissioners and PBGMO and Ali is working on temp signage for this weekend. The idea is to fence off dock from the water side

**Alex and Howard** see attached memo

**Sev Araujo**  
**Manager, Commercial Operations**  
Vancouver Park Board, City of Vancouver  
o. 604 257 8436 / f. 604 257 8427  
Email: [Sev.Araujo@vancouver.ca](mailto:Sev.Araujo@vancouver.ca)

---

**From:** Keyzer, Rachel  
**Sent:** Friday, February 09, 2018 1:49 PM  
**To:** Araujo, Sev  
**Cc:** Nayeri, Ali  
**Subject:** Re: Harbour Green Dock

Ok so to confirm, I will have my crew unlock the dock tonight and report back how many locks have been placed on the dock?

Would you like anything caution taped off?

Rachel Keyzer  
Lead Park Ranger  
By-law Enforcement Portfolio  
Vancouver Park Board  
(t) s.15(1)(l)  
(e) [rachel.keyzer@vancouver.ca](mailto:rachel.keyzer@vancouver.ca)

On Feb 9, 2018, at 1:14 PM, Araujo, Sev <[Sev.Araujo@vancouver.ca](mailto:Sev.Araujo@vancouver.ca)> wrote:

No rush we need it open until February 15 as the dock will then be closed temporarily.

Thank you

**Sev Araujo**  
**Manager, Commercial Operations**  
Vancouver Park Board, City of Vancouver  
o. 604 257 8436 / f. 604 257 8427  
Email: [Sev.Araujo@vancouver.ca](mailto:Sev.Araujo@vancouver.ca)

---

**From:** Keyzer, Rachel  
**Sent:** Friday, February 09, 2018 12:56 PM  
**To:** Araujo, Sev  
**Cc:** Nayeri, Ali  
**Subject:** Re: Harbour Green Dock

I'll try at get a ranger to go by as soon as possible. They've had a particularly busy day today, so it may take a few hours. Worst comes to worst, I can have the pm crew head over.  
Ill keep you both posted.

Rachel Keyzer  
Lead Park Ranger  
By-law Enforcement Portfolio  
Vancouver Park Board  
(t) s.15(1)(l)  
(e) [rachel.keyzer@vancouver.ca](mailto:rachel.keyzer@vancouver.ca)



On Feb 9, 2018, at 10:09 AM, Araujo, Sev <[Sev.Araujo@vancouver.ca](mailto:Sev.Araujo@vancouver.ca)> wrote:

Missing a few words ...

Were locks placed on both gates?

**Sev Araujo**

**Manager, Commercial Operations**

Vancouver Park Board, City of Vancouver

o. 604 257 8436 / f. 604 257 8427

Email: [Sev.Araujo@vancouver.ca](mailto:Sev.Araujo@vancouver.ca)

---

**From:** Araujo, Sev

**Sent:** Thursday, February 08, 2018 3:00 PM

**To:** Nayeri, Ali; Rachel Keyzer

**Subject:** RE: Harbour Green Dock

Im surprised operator hasn't called.

Rachel were placed on both gates at the top of the gangways or just one?

**Sev Araujo**

**Manager, Commercial Operations**

Vancouver Park Board, City of Vancouver

o. 604 257 8436 / f. 604 257 8427

Email: [Sev.Araujo@vancouver.ca](mailto:Sev.Araujo@vancouver.ca)

---

**From:** Nayeri, Ali

**Sent:** Thursday, February 08, 2018 10:35 AM

**To:** Araujo, Sev

**Cc:** Silva, Octavio; Harper, Margo; Mack, Tiina

**Subject:** FW: Harbour Green Dock

Hi Sev,

Rachel has managed to get find out who locked the gate at the dock (see below). It is currently closed and will remain closed unless we ask otherwise.

Has the operator has reached out to you about this?

Thanks,

Ali

---

**From:** Keyzer, Rachel

**Sent:** Thursday, February 08, 2018 9:43 AM

**To:** Nayeri, Ali


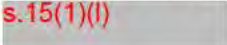
**Subject:** RE: Harbour Green Dock

Hi Ali,

So it appears that it was indeed a Park Ranger who placed a lock on the dock. Last week, we received a 3-1-1 complaint from the public regarding safety concerns on the dock. As a safety precaution, the responding Ranger placed a lock on it to prevent the public from using it. It is currently locked, but we can remove it upon request.

My apologies for the confusion as I did not see the case that had been created for this issue.



 **Rachel Keyzer** | Lead Park Ranger | By-Law Enforcement Portfolio  
Vancouver Board of Parks and Recreation | 2099 Beach Avenue  
t. 604.257.8528 | c.   
[rachel.keyzer@vancouver.ca](mailto:rachel.keyzer@vancouver.ca)

This transmission may contain confidential or privileged information, and the sender does not waive any rights and obligations. Redistribution may result in a breach of privacy laws so you are asked not to forward or copy any information herein without permission.

---

**From:** Nayeri, Ali  
**Sent:** Thursday, February 08, 2018 7:58 AM  
**To:** Keyzer, Rachel  
**Subject:** Re: Harbour Green Dock

Thanks Rachel for letting me know. Do you know if the dock is currently locked?  
Many thanks,  
Ali

On Feb 8, 2018, at 7:54 AM, Keyzer, Rachel <[Rachel.Keyzer@vancouver.ca](mailto:Rachel.Keyzer@vancouver.ca)> wrote:

Hi Ali,

I've spoken with Jeff Whitehead and he is looking into the matter. He too did not know anything about it, but will let me know what he finds. I'll keep you posted.

Thanks,



**Rachel Keyzer** | Lead Park Ranger | By-Law Enforcement Portfolio  
Vancouver Board of Parks and Recreation | 2099 Beach Avenue  
t. 604.257.8528 | c.   
[rachel.keyzer@vancouver.ca](mailto:rachel.keyzer@vancouver.ca)

This transmission may contain confidential or privileged information, and the sender does not waive any rights and obligations. Redistribution may result in a breach of privacy laws so you are asked not to forward or copy any information herein without permission.







From: ["Araujo, Sev" <Sev.Araujo@vancouver.ca>](mailto:Sev.Araujo@vancouver.ca)  
To: ["Nayeri, Ali" <Ali.Nayeri@vancouver.ca>](mailto:Ali.Nayeri@vancouver.ca)  
["Cowles, Chad" <Chad.Cowles@vancouver.ca>](mailto:Chad.Cowles@vancouver.ca)  
["Keyzer, Rachel" <Rachel.Keyzer@vancouver.ca>](mailto:Rachel.Keyzer@vancouver.ca)  
Date: 2/5/2018 1:35:07 PM  
Subject: RE: Harbour Green Dock Locked Off

Adding Rachel to the conversation

**Sev Araujo**  
**Manager, Commercial Operations**  
Vancouver Park Board, City of Vancouver  
o. 604 257 8436 / f. 604 257 8427  
Email: [Sev.Araujo@vancouver.ca](mailto:Sev.Araujo@vancouver.ca)

---

**From:** Nayeri, Ali  
**Sent:** Monday, February 05, 2018 12:27 PM  
**To:** Cowles, Chad  
**Cc:** Mack, Tiina; Foster, Ian; Araujo, Sev  
**Subject:** RE: Harbour Green Dock Locked Off

Hi Chad,

Is there a reason why the Harbour Green Dock is locked? Our fabrication shop crew is at the site to do some repairs and they are getting questions from the water taxi operator.

Thanks,  
Ali

---

**From:** Araujo, Sev  
**Sent:** Monday, February 05, 2018 12:24 PM  
**To:** Nayeri, Ali  
**Cc:** Mack, Tiina; Foster, Ian  
**Subject:** RE: Harbour Green Dock Locked Off

I haven't requested a lock be put on it

**Sev Araujo**  
**Manager, Commercial Operations**  
Vancouver Park Board, City of Vancouver  
o. 604 257 8436 / f. 604 257 8427  
Email: [Sev.Araujo@vancouver.ca](mailto:Sev.Araujo@vancouver.ca)

---

**From:** Nayeri, Ali  
**Sent:** Monday, February 05, 2018 12:21 PM  
**To:** Araujo, Sev  
**Cc:** Mack, Tiina; Foster, Ian  
**Subject:** Harbour Green Dock Locked Off

Hi Sev,

When I was at the dock on Friday, I noticed a couple of issues and I asked Ian if he could send his crew to fix them. I just got a call from Ian and he told me that when they showed up, the access to the dock was locked. The water taxi people were asking Ian's crew how long it is going to be closed. Was this due to our discussion on Friday or is this an unrelated issue that has to be followed-up with the park rangers?

Ian was proposing to close off the west gangway while they are doing their repairs to the joint and keep the east gangway open for the water taxi while we finalize our plans with respect to full closure.

Thanks,  
Ali





From: ["Nayeri, Ali" <Ali.Nayeri@vancouver.ca>](mailto:Ali.Nayeri@vancouver.ca)  
To: ["Araujo, Sev" <sev.araujo@vancouver.ca>](mailto:sev.araujo@vancouver.ca)  
Date: 2/14/2018 12:01:18 PM  
Subject: RE: Harbour Green dock signage

Hi Sev,  
Just wondering if you had any comments on the sign. I want to get the sign shop to produce it as soon as possible.  
Thanks,  
Ali

---

**From:** Harper, Margo  
**Sent:** Tuesday, February 13, 2018 4:03 PM  
**To:** Nayeri, Ali; Araujo, Sev  
**Cc:** Mack, Tiina; Park Board GM's Office  
**Subject:** RE: Harbour Green dock signage

Note that Ali came down to discuss, and I thought the most appropriate contact info to put on sign was [PB.comments@vancouver.ca](mailto:PB.comments@vancouver.ca) as it is regularly monitored by GMO who will be managing the correspondence re. dock.

---

**From:** Nayeri, Ali  
**Sent:** Tuesday, February 13, 2018 4:01 PM  
**To:** Araujo, Sev  
**Cc:** Harper, Margo; Mack, Tiina  
**Subject:** Harbour Green dock signage

Hi Sev,

We've prepared a draft of the more permanent signs for Harbour Green Dock. The signs will be 48"x36" . Do you have any comments before it goes to the sign shop?

The signs will be mounted on both gates as well as on the fence that our fabrication shop is going to put up this week on the floats.

Thanks,  
Ali



From: ["Araujo, Sev" <Sev.Araujo@vancouver.ca>](mailto:Sev.Araujo@vancouver.ca)

To: ["Nayeri, Ali" <Ali.Nayeri@vancouver.ca>](mailto:Ali.Nayeri@vancouver.ca)

Date: 2/14/2018 1:01:21 PM

Subject: RE: Harbour Green dock signage

I spoke to Risk and they suggest adding

“Do Not Access” at the end

**Sev Araujo**

**Manager, Commercial Operations**

Vancouver Park Board, City of Vancouver

o. 604 257 8436 / f. 604 257 8427

Email: [Sev.Araujo@vancouver.ca](mailto:Sev.Araujo@vancouver.ca)

---

**From:** Nayeri, Ali

**Sent:** Tuesday, February 13, 2018 4:01 PM

**To:** Araujo, Sev

**Cc:** Harper, Margo; Mack, Tiina

**Subject:** Harbour Green dock signage

Hi Sev,

We’ve prepared a draft of the more permanent signs for Harbour Green Dock. The signs will be 48”x36” . Do you have any comments before it goes to the sign shop?

The signs will be mounted on both gates as well as on the fence that our fabrication shop is going to put up this week on the floats.

Thanks,  
Ali

From: ["Bone, Patricia" <patricia.bone@vancouver.ca>](mailto:patricia.bone@vancouver.ca)

To: ["Nayeri, Ali" <Ali.Nayeri@vancouver.ca>](mailto:Ali.Nayeri@vancouver.ca)

Date: 2/15/2018 8:57:51 AM

Subject: RE: Harbour Green Dock

Hi Ali

Was just going to email you.

I'm starting printing today with a plan to complete some of the 5 signs.

Bill could install these tomorrow if Ian's crew has the fencing in place.  
Has Ian confirmed with you?

Otherwise Monday would be fine for installing all 5.

Thanks  
Pat

-----Original Message-----

From: Nayeri, Ali

Sent: Thursday, February 15, 2018 7:49 AM

To: Bone, Patricia

Subject: Harbour Green Dock

Hi Pat,

Sorry, I keep forgetting this is a short week. So I think having signs done by tomorrow is really unrealistic. So would next Monday or early Tuesday be doable?

Thanks again,  
Ali



From: ["Araujo, Sev" <Sev.Araujo@vancouver.ca>](mailto:Sev.Araujo@vancouver.ca)  
To: ["Mack, Tiina" <tiina.mack@vancouver.ca>](mailto:tiina.mack@vancouver.ca)  
["Nayeri, Ali" <Ali.Nayeri@vancouver.ca>](mailto:Ali.Nayeri@vancouver.ca)  
Date: 2/6/2018 5:02:58 PM  
Subject: RE: Harbour Green Docks - Pilehoop replacement

s.13(1)

Can I recommend that when we go back to associated we get

Max:

- Length of vessel
- Weight of vessel
- 3 of vessels at any one time
- # of people on the Dock and Gangways at any one time

I am sure skys the limit but we should have some min and max commercial operations. I am happy to sit on the intial kick off meeting if you would like me to

**Sev Araujo**

**Manager, Commercial Operations**

Vancouver Park Board, City of Vancouver

o. 604 257 8436 / f. 604 257 8427

Email: [Sev.Araujo@vancouver.ca](mailto:Sev.Araujo@vancouver.ca)

---

**From:** Mack, Tiina  
**Sent:** Tuesday, February 06, 2018 2:36 PM  
**To:** Nayeri, Ali  
**Cc:** Araujo, Sev  
**Subject:** RE: Harbour Green Docks - Pilehoop replacement

Hi Ali,

On this, do we have an estimate of cost (design, administration and construction) to upgrade the dock to a commercial standard?

Is this something Associated Engineering can provide fairly quickly?

Sev is likely to prepare a Board report to outline our options and costs to obtain a decision.

Thank you

Tiina

---

**From:** Nayeri, Ali  
**Sent:** Tuesday, February 06, 2018 12:19 PM  
**To:** Araujo, Sev  
**Cc:** Silva, Octavio; Mack, Tiina  
**Subject:** FW: Harbour Green Docks - Pilehoop replacement

Hi Sev,

Here is the letter from AE. In light of all the issues and AE's recommendation, I think we should completely close off the dock since it is not possible to ensure compliance by commercial users.

Regards,

Ali

---

**From:** Mike Hanson [<mailto:hansonm@ae.ca>]  
**Sent:** Tuesday, February 06, 2018 12:03 PM  
**To:** Nayeri, Ali  
**Subject:** RE: Harbour Green Docks - Pilehoop replacement

Thanks Ali, its difficult to tell for certain from our photos as well, where the brackets at the east landing were sitting previously.

Please find the letter attached as per your request. If you have any questions please don't hesitate to ask

Regards,

**Mike Hanson, P.Eng.**  
Bridge Engineer  
Associated Engineering (B.C.) Ltd.  
#500 – 2889 East 12<sup>th</sup> Avenue, Vancouver, BC V5M 4T5  
Tel: [604.293.1411](tel:604.293.1411) | Cel: [604.928.9853](tel:604.928.9853) | Direct: [236.317.2325](tel:236.317.2325)

---

**From:** Nayeri, Ali [<mailto:Ali.Nayeri@vancouver.ca>]  
**Sent:** Tuesday, February 06, 2018 9:23 AM  
**To:** Mike Hanson <[hansonm@ae.ca](mailto:hansonm@ae.ca)>  
**Subject:** FW: Harbour Green Docks - Pilehoop replacement

Hi Mike,

I discussed this issue with Matt. His recollection is that the brackets on the east landing float were always lower. Unfortunately we don't have any baselines, so I can't say if it was like this or not. Regardless, I think we will need to do some rehabilitation work on the floats (especially concrete repairs).

I thought I should send you these photos as well. As a result of the large gaps around the piles, the floats are moving side to side, which means the gaps between them can increase and decrease quite significantly. Our fabrication shop had put in some brackets to support the rubber transition between the west landing float (float 1) and float 2. Those brackets are causing damage to the floats when they collide with each other.

Thanks,  
Ali

---

**From:** Matt Tobias [<mailto:matt@floatingstructures.com>]  
**Sent:** Saturday, February 03, 2018 11:03 AM  
**To:** Nayeri, Ali  
**Subject:** Re: Harbour Green Docks - Pilehoop replacement

Ali,

Pile 12 & 13, have been like that for quite sometime maybe even from the beginning, we can also address this when you get approval to move forward with the remediation

Cheers,  
M

Sent from my iPhone

On Feb 2, 2018, at 4:51 PM, Nayeri, Ali <[Ali.Nayeri@vancouver.ca](mailto:Ali.Nayeri@vancouver.ca)> wrote:

Hi Matt,

I have provided your estimate to our management and I am just waiting to see how to proceed. In the meantime, I am a bit worried that conditions could get worse, so I try to visit there whenever I can. I was at the dock earlier



today and noticed that the pile brackets 12 and 13 which are attached to the east landing float (float 8) are partially submerged in water. All other brackets are out of water (see attached photos). Unfortunately, I don't have a baseline to compare to, but I was concerned that the float might either not be floating as high as it was intended to or was being prevented from moving up by something else.

Do you think this requires immediate investigation?

Thanks,  
Ali

---

**From:** Nayeri, Ali  
**Sent:** Friday, January 19, 2018 2:20 PM  
**To:** 'Matt Tobias'  
**Subject:** RE: Harbour Green Docks - Pilehoop replacement

Hi Matt,

I appreciate your quick responses to my questions. I am preparing a summary to discuss this with our senior management. This structure was not on our list of projects so with this information, we will need to figure out the funding piece.

I'll be in touch if we need more information.

Regards,  
Ali

---

**From:** Matt Tobias [<mailto:matt@floatingstructures.com>]  
**Sent:** Friday, January 19, 2018 11:55 AM  
**To:** Nayeri, Ali  
**Subject:** RE: Harbour Green Docks - Pilehoop replacement

Ali,

For our engineers to review new pilehoop design and provide shop drawings & engineering will be \$2900. After design & engineering of the pilehoop it may cause us to update our pricing because of extras that are being recommended by the engineer?

Attached are the original engineering drawings for the project, you can see this dock was designed for 35ft vessel, although I would suspect that this was the original request not necessary the limits of the dock?

Regards,

Mathias Tobias  
Senior Project Manager



**IMFS International Marine Floatation Systems Inc.**

9365 River Road, Delta, BC, Canada V4G 1B4

Tel (604)930-9903, (Ext. 2) Cell: 604-908-6889

[Website](#) | [Instagram](#) | [Linkedin](#) | [Facebook](#) | [Pinterest](#)

## CONFIDENTIALITY NOTICE

This communication is intended for the exclusive use of the addressee identified above.

Its content is confidential and may contain privileged information.

If you have received this communication by error, please notify the sender and delete the message without copying or disclosing.

**From:** Nayeri, Ali [<mailto:Ali.Nayeri@vancouver.ca>]  
**Sent:** January-18-18 6:40 PM  
**To:** Matt Tobias  
**Subject:** RE: Harbour Green Docks - Pilehoop replacement

Hi Matt,

Thank you for preparing this budget proposal for us. I have the following questions:

- a. The proposal states that the budget excludes engineering. Is additional engineering required for the repairs that you are proposing? If so, what would be the estimated cost of the engineering work.
- How long will these repairs take? I anticipate that there would be a need to close the dock during the repairs. As I had mentioned, there is currently a ferry operation that uses the dock, so I need to give our management team a sense of the possible impact.
- How long will the proposed repairs last? Is this a stop-gap measure or is this anticipated to resolve the issues?
- Will these repairs allow the dock to continue to be used for commercial ferry operations? i.e. 8 scheduled docking/off-loading per day and average of 120 people loading/off-loading per day PLUS other non-scheduled commercial activity? If not what would that take / what is the issue preventing that?
- What would be the largest vessel and weight allowable once repairs are done?
- At the site meeting we discussed possibilities for dampening the motion of the floats in response to the waves in the inner harbour. I saw that you had included hard rubber sandwiched between the UHMW and the C channel for this. Will that last given the conditions there? Have you successfully used this design previously in similar conditions?
- What are the expected maintenance requirements for the new pile brackets? Are there things that we could do to reduce the maintenance requirements?
- Is there anything else that we can do to improve the resilience of the dock?

Thanks,  
Ali

---

**From:** Matt Tobias [<mailto:matt@floatingstructures.com>]  
**Sent:** Thursday, January 18, 2018 10:17 AM  
**To:** Nayeri, Ali  
**Subject:** Harbour Green Docks - Pilehoop replacement

Ali,

I apologize for the delay please see attached proposal for replacement of 13 pilehoops at Harbour Green Dock. Let me know if you have any questions or concerns?

Regards,

Mathias Tobias  
Senior Project Manager



**IMFS International Marine Floatation Systems Inc.**

9365 River Road, Delta, BC, Canada V4G 1B4  
Tel (604)930-9903, (Ext. 2) Cell: 604-908-6889  
[Website](#) | [Instagram](#) | [LinkedIn](#) | [Facebook](#) | [Pinterest](#)

#### CONFIDENTIALITY NOTICE

This communication is intended for the exclusive use of the addressee identified above.  
Its content is confidential and may contain privileged information.  
If you have received this communication by error, please notify the sender and delete the message without copying or disclosing.

<2018\_02\_02\_pile\_photos.pdf>



You may [unsubscribe from Associated's electronic communications](#) at any time.

From: "Mack, Tiina" <tiina.mack@vancouver.ca>  
To: "Nayeri, Ali" <Ali.Nayeri@vancouver.ca>  
Date: 2/6/2018 1:59:50 PM  
Subject: RE: Harbour Green Docks - Pilehoop replacement

Thanks Ali

---

**From:** Nayeri, Ali  
**Sent:** Tuesday, February 06, 2018 12:19 PM  
**To:** Araujo, Sev  
**Cc:** Silva, Octavio; Mack, Tiina  
**Subject:** FW: Harbour Green Docks - Pilehoop replacement

Hi Sev,

Here is the letter from AE. In light of all the issues and AE's recommendation, I think we should completely close off the dock since it is not possible to ensure compliance by commercial users.

Regards,  
Ali

---

**From:** Mike Hanson [<mailto:hansonm@ae.ca>]  
**Sent:** Tuesday, February 06, 2018 12:03 PM  
**To:** Nayeri, Ali  
**Subject:** RE: Harbour Green Docks - Pilehoop replacement

Thanks Ali, its difficult to tell for certain from our photos as well, where the brackets at the east landing were sitting previously.

Please find the letter attached as per your request. If you have any questions please don't hesitate to ask

Regards,

**Mike Hanson, P.Eng.**  
Bridge Engineer  
Associated Engineering (B.C.) Ltd.  
#500 – 2889 East 12<sup>th</sup> Avenue, Vancouver, BC V5M 4T5  
Tel: [604.293.1411](tel:604.293.1411) | Cel: [604.928.9853](tel:604.928.9853) | Direct: [236.317.2325](tel:236.317.2325)

---

**From:** Nayeri, Ali [<mailto:Ali.Nayeri@vancouver.ca>]  
**Sent:** Tuesday, February 06, 2018 9:23 AM  
**To:** Mike Hanson <[hansonm@ae.ca](mailto:hansonm@ae.ca)>  
**Subject:** FW: Harbour Green Docks - Pilehoop replacement

Hi Mike,

I discussed this issue with Matt. His recollection is that the brackets on the east landing float were always lower. Unfortunately we don't have any baselines, so I can't say if it was like this or not. Regardless, I think we will need to do some rehabilitation work on the floats (especially concrete repairs).

I thought I should send you these photos as well. As a result of the large gaps around the piles, the floats are moving side to side, which means the gaps between them can increase and decrease quite significantly. Our fabrication shop had put in some brackets to support the rubber transition between the west landing float (float 1) and float 2. Those brackets are causing damage to the floats when they collide with each other.

Thanks,  
Ali

---

**From:** Matt Tobias [<mailto:matt@floatingstructures.com>]  
**Sent:** Saturday, February 03, 2018 11:03 AM



**To:** Nayeri, Ali  
**Subject:** Re: Harbour Green Docks - Pilehoop replacement

Ali,

Pile 12 & 13, have been like that for quite sometime maybe even from the beginning, we can also address this when you get approval to move forward with the remediation

Cheers,  
M

Sent from my iPhone

On Feb 2, 2018, at 4:51 PM, Nayeri, Ali <[Ali.Nayeri@vancouver.ca](mailto:Ali.Nayeri@vancouver.ca)> wrote:

Hi Matt,

I have provided your estimate to our management and I am just waiting to see how to proceed. In the meantime, I am a bit worried that conditions could get worse, so I try to visit there whenever I can. I was at the dock earlier today and noticed that the pile brackets 12 and 13 which are attached to the east landing float (float 8) are partially submerged in water. All other brackets are out of water (see attached photos). Unfortunately, I don't have a baseline to compare to, but I was concerned that the float might either not be floating as high as it was intended to or was being prevented from moving up by something else.

Do you think this requires immediate investigation?

Thanks,  
Ali

---

**From:** Nayeri, Ali  
**Sent:** Friday, January 19, 2018 2:20 PM  
**To:** 'Matt Tobias'  
**Subject:** RE: Harbour Green Docks - Pilehoop replacement

Hi Matt,

I appreciate your quick responses to my questions. I am preparing a summary to discuss this with our senior management. This structure was not on our list of projects so with this information, we will need to figure out the funding piece.

I'll be in touch if we need more information.

Regards,  
Ali

---

**From:** Matt Tobias [<mailto:matt@floatingstructures.com>]  
**Sent:** Friday, January 19, 2018 11:55 AM  
**To:** Nayeri, Ali  
**Subject:** RE: Harbour Green Docks - Pilehoop replacement

Ali,

For our engineers to review new pilehoop design and provide shop drawings & engineering will be \$2900. After design & engineering of the pilehoop it may cause us to update our pricing because of extras that are being recommended by the engineer?

Attached are the original engineering drawings for the project, you can see this dock was designed for 35ft vessel, although I would suspect that this was the original request not necessary the limits of the dock?



Regards,

Mathias Tobias  
Senior Project Manager



**IMFS International Marine Floatation Systems Inc.**

9365 River Road, Delta, BC, Canada V4G 1B4

Tel (604)930-9903, (Ext. 2) Cell: 604-908-6889

[Website](#) | [Instagram](#) | [Linkedin](#) | [Facebook](#) | [Pinterest](#)

#### CONFIDENTIALITY NOTICE

This communication is intended for the exclusive use of the addressee identified above.

Its content is confidential and may contain privileged information.

If you have received this communication by error, please notify the sender and delete the message without copying or disclosing.

---

**From:** Nayeri, Ali [<mailto:Ali.Nayeri@vancouver.ca>]  
**Sent:** January-18-18 6:40 PM  
**To:** Matt Tobias  
**Subject:** RE: Harbour Green Docks - Pilehoop replacement

Hi Matt,

Thank you for preparing this budget proposal for us. I have the following questions:

- a. The proposal states that the budget excludes engineering. Is additional engineering required for the repairs that you are proposing? If so, what would be the estimated cost of the engineering work.
- How long will these repairs take? I anticipate that there would be a need to close the dock during the repairs. As I had mentioned, there is currently a ferry operation that uses the dock, so I need to give our management team a sense of the possible impact.
- How long will the proposed repairs last? Is this a stop-gap measure or is this anticipated to resolve the issues?
- Will these repairs allow the dock to continue to be used for commercial ferry operations? i.e. 8 scheduled docking/off-loading per day and average of 120 people loading/off-loading per day PLUS other non-scheduled commercial activity? If not what would that take / what is the issue preventing that?
- What would be the largest vessel and weight allowable once repairs are done?
- At the site meeting we discussed possibilities for dampening the motion of the floats in response to the waves in the inner harbour. I saw that you had included hard rubber sandwiched between the UHMW and the C channel for this. Will that last given the conditions there? Have you successfully used this design previously in similar conditions?
- What are the expected maintenance requirements for the new pile brackets? Are there things that we could do to reduce the maintenance requirements?
- Is there anything else that we can do to improve the resilience of the dock?

Thanks,  
Ali

---

**From:** Matt Tobias [<mailto:matt@floatingstructures.com>]  
**Sent:** Thursday, January 18, 2018 10:17 AM  
**To:** Nayeri, Ali  
**Subject:** Harbour Green Docks - Pilehoop replacement

Ali,

I apologize for the delay please see attached proposal for replacement of 13 pilehoops at Harbour Green Dock. Let me know if you have any questions or concerns?

Regards,

Mathias Tobias  
Senior Project Manager



**IMFS International Marine Floatation Systems Inc.**

9365 River Road, Delta, BC, Canada V4G 1B4

Tel (604)930-9903, (Ext. 2) Cell: 604-908-6889

[Website](#) | [Instagram](#) | [Linkedin](#) | [Facebook](#) | [Pinterest](#)

## CONFIDENTIALITY NOTICE

This communication is intended for the exclusive use of the addressee identified above.

Its content is confidential and may contain privileged information.

If you have received this communication by error, please notify the sender and delete the message without copying or disclosing.

<2018\_02\_02\_pile\_photos.pdf>

You may [unsubscribe from Associated's electronic communications](#) at any time.



From: ["Mike Hanson" <hansonm@ae.ca>](mailto:hansonm@ae.ca)  
To: ["Nayeri, Ali" <Ali.Nayeri@vancouver.ca>](mailto:Ali.Nayeri@vancouver.ca)  
Date: 2/6/2018 1:03:15 PM  
Subject: RE: Harbour Green Docks - Pilehoop replacement  
Attachments: ltr\_HarbourGreen\_VancouverParks\_20180206\_mh.pdf

Thanks Ali, its difficult to tell for certain from our photos as well, where the brackets at the east landing were sitting previously.

Please find the letter attached as per your request. If you have any questions please don't hesitate to ask

Regards,

**Mike Hanson, P.Eng.**

Bridge Engineer

Associated Engineering (B.C.) Ltd.

#500 – 2889 East 12<sup>th</sup> Avenue, Vancouver, BC V5M 4T5

Tel: [604.293.1411](tel:604.293.1411) | Cel: [604.928.9853](tel:604.928.9853) | Direct: [236.317.2325](tel:236.317.2325)

---

**From:** Nayeri, Ali [<mailto:Ali.Nayeri@vancouver.ca>]  
**Sent:** Tuesday, February 06, 2018 9:23 AM  
**To:** Mike Hanson <[hansonm@ae.ca](mailto:hansonm@ae.ca)>  
**Subject:** FW: Harbour Green Docks - Pilehoop replacement

Hi Mike,

I discussed this issue with Matt. His recollection is that the brackets on the east landing float were always lower. Unfortunately we don't have any baselines, so I can't say if it was like this or not. Regardless, I think we will need to do some rehabilitation work on the floats (especially concrete repairs).

I thought I should send you these photos as well. As a result of the large gaps around the piles, the floats are moving side to side, which means the gaps between them can increase and decrease quite significantly. Our fabrication shop had put in some brackets to support the rubber transition between the west landing float (float 1) and float 2. Those brackets are causing damage to the floats when they collide with each other.

Thanks,  
Ali

---

**From:** Matt Tobias [<mailto:matt@floatingstructures.com>]  
**Sent:** Saturday, February 03, 2018 11:03 AM  
**To:** Nayeri, Ali  
**Subject:** Re: Harbour Green Docks - Pilehoop replacement

Ali,

Pile 12 & 13, have been like that for quite sometime maybe even from the beginning, we can also address this when you get approval to move forward with the remediation

Cheers,  
M

Sent from my iPhone

On Feb 2, 2018, at 4:51 PM, Nayeri, Ali <[Ali.Nayeri@vancouver.ca](mailto:Ali.Nayeri@vancouver.ca)> wrote:

Hi Matt,

I have provided your estimate to our management and I am just waiting to see how to proceed. In the meantime, I



am a bit worried that conditions could get worse, so I try to visit there whenever I can. I was at the dock earlier today and noticed that the pile brackets 12 and 13 which are attached to the east landing float (float 8) are partially submerged in water. All other brackets are out of water (see attached photos). Unfortunately, I don't have a baseline to compare to, but I was concerned that the float might either not be floating as high as it was intended to or was being prevented from moving up by something else.

Do you think this requires immediate investigation?

Thanks,  
Ali

---

**From:** Nayeri, Ali  
**Sent:** Friday, January 19, 2018 2:20 PM  
**To:** 'Matt Tobias'  
**Subject:** RE: Harbour Green Docks - Pilehoop replacement

Hi Matt,

I appreciate your quick responses to my questions. I am preparing a summary to discuss this with our senior management. This structure was not on our list of projects so with this information, we will need to figure out the funding piece.

I'll be in touch if we need more information.

Regards,  
Ali

---

**From:** Matt Tobias [<mailto:matt@floatingstructures.com>]  
**Sent:** Friday, January 19, 2018 11:55 AM  
**To:** Nayeri, Ali  
**Subject:** RE: Harbour Green Docks - Pilehoop replacement

Ali,

For our engineers to review new pilehoop design and provide shop drawings & engineering will be \$2900. After design & engineering of the pilehoop it may cause us to update our pricing because of extras that are being recommended by the engineer?

Attached are the original engineering drawings for the project, you can see this dock was designed for 35ft vessel, although I would suspect that this was the original request not necessary the limits of the dock?

Regards,

Mathias Tobias  
Senior Project Manager



**IMFS International Marine Floatation Systems Inc.**

9365 River Road, Delta, BC, Canada V4G 1B4

Tel (604)930-9903, (Ext. 2) Cell: 604-908-6889

[Website](#) | [Instagram](#) | [Linkedin](#) | [Facebook](#) | [Pinterest](#)

#### CONFIDENTIALITY NOTICE

This communication is intended for the exclusive use of the addressee identified above.  
Its content is confidential and may contain privileged information.



---

**From:** Nayeri, Ali [<mailto:Ali.Nayeri@vancouver.ca>]  
**Sent:** January-18-18 6:40 PM  
**To:** Matt Tobias  
**Subject:** RE: Harbour Green Docks - Pilehoop replacement

Hi Matt,

Thank you for preparing this budget proposal for us. I have the following questions:

- The proposal states that the budget excludes engineering. Is additional engineering required for the repairs that you are proposing? If so, what would be the estimated cost of the engineering work.
- How long will these repairs take? I anticipate that there would be a need to close the dock during the repairs. As I had mentioned, there is currently a ferry operation that uses the dock, so I need to give our management team a sense of the possible impact.
- How long will the proposed repairs last? Is this a stop-gap measure or is this anticipated to resolve the issues?
- Will these repairs allow the dock to continue to be used for commercial ferry operations? i.e. 8 scheduled docking/off-loading per day and average of 120 people loading/off-loading per day PLUS other non-scheduled commercial activity? If not what would that take / what is the issue preventing that?
- What would be the largest vessel and weight allowable once repairs are done?
- At the site meeting we discussed possibilities for dampening the motion of the floats in response to the waves in the inner harbour. I saw that you had included hard rubber sandwiched between the UHMW and the C channel for this. Will that last given the conditions there? Have you successfully used this design previously in similar conditions?
- What are the expected maintenance requirements for the new pile brackets? Are there things that we could do to reduce the maintenance requirements?
- Is there anything else that we can do to improve the resilience of the dock?

Thanks,  
Ali

---

**From:** Matt Tobias [<mailto:matt@floatingstructures.com>]  
**Sent:** Thursday, January 18, 2018 10:17 AM  
**To:** Nayeri, Ali  
**Subject:** Harbour Green Docks - Pilehoop replacement

Ali,

I apologize for the delay please see attached proposal for replacement of 13 pilehoops at Harbour Green Dock. Let me know if you have any questions or concerns?

Regards,

Mathias Tobias  
Senior Project Manager



**IMFS International Marine Floatation Systems Inc.**

9365 River Road, Delta, BC, Canada V4G 1B4

Tel (604)930-9903, (Ext. 2) Cell: 604-908-6889

[Website](#) | [Instagram](#) | [Linkedin](#) | [Facebook](#) | [Pinterest](#)

#### CONFIDENTIALITY NOTICE

This communication is intended for the exclusive use of the addressee identified above.

Its content is confidential and may contain privileged information.

If you have received this communication by error, please notify the sender and delete the message without copying or disclosing.

<2018\_02\_02\_pile\_photos.pdf>

You may [unsubscribe from Associated's electronic communications](#) at any time.





**Associated  
Engineering**

GLOBAL PERSPECTIVE,  
LOCAL FOCUS.

**Associated Engineering (B.C.) Ltd.**  
#500 - 2889 East 12th Avenue  
Vancouver, B.C., Canada V5M 4T5

TEL: 604.293.1411  
FAX: 604.291.6163  
www.ae.ca

February 5, 2018

File: 20162282.00.E.05.00

Ali Nayeri  
Vancouver Board of Parks and Recreation  
2099 Beach Ave  
Vancouver, BC V6G 1Z4

**Re: RECOMMENDATIONS FOR SAFE USE OF HARBOUR GREEN DOCK**

Dear Mr. Nayeri:

The **Vancouver Board of Parks and Recreation** (Park Board) originally retained **Associated Engineering** (AE) to perform a detailed inspection of Harbour Green Dock in September 2017. Following this inspection, the Park Board expressed concerns that the condition of the dock has further deteriorated to a point that may be resulting in unsafe conditions for vessel mooring.

We have reviewed the photographs provided by the Park Board, dated February 2<sup>nd</sup>, 2018, and recommend that the Park Board limit the use of the dock to recreational vessels under 20' in length, until such time that repairs to the pile rings can be completed. Since two of the pile rings have failed, and the remaining rings are in poor condition, the ability of the dock to withstand the design mooring loading (35' long vessel) is compromised.

Furthermore, the pile rings at Floats 1 and 8 are now partially submerged. It is unclear whether this is a result of the water level at the time of the site visit or due to the deterioration of the floats and pile rings. We recommend the buoyancy of the floats be examined and if needed addressed appropriately prior to undertaking repairs to the rings.

We trust this letter provides sufficient information for the Park Board. Should you have any further questions or concerns please don't hesitate to contact us.

Yours truly,

Prepared by:

Reviewed by



Mike Hanson, P.Eng.  
Structural Engineer



Julien Henley, P.Eng.  
Senior Engineer

MH/JH/mc



From: ["Nayeri, Ali" <Ali.Nayeri@vancouver.ca>](mailto:Ali.Nayeri@vancouver.ca)  
To: ["Matt Tobias" <matt@floatingstructures.com>](mailto:matt@floatingstructures.com)  
Date: 2/2/2018 5:50:53 PM  
Subject: RE: Harbour Green Docks - Pilehoop replacement  
Attachments: 2018\_02\_02\_pile\_photos.pdf

Hi Matt,

I have provided your estimate to our management and I am just waiting to see how to proceed. In the meantime, I am a bit worried that conditions could get worse, so I try to visit there whenever I can. I was at the dock earlier today and noticed that the pile brackets 12 and 13 which are attached to the east landing float (float 8) are partially submerged in water. All other brackets are out of water (see attached photos). Unfortunately, I don't have a baseline to compare to, but I was concerned that the float might either not be floating as high as it was intended to or was being prevented from moving up by something else.

Do you think this requires immediate investigation?

Thanks,  
Ali

---

**From:** Nayeri, Ali  
**Sent:** Friday, January 19, 2018 2:20 PM  
**To:** 'Matt Tobias'  
**Subject:** RE: Harbour Green Docks - Pilehoop replacement

Hi Matt,

I appreciate your quick responses to my questions. I am preparing a summary to discuss this with our senior management. This structure was not on our list of projects so with this information, we will need to figure out the funding piece.

I'll be in touch if we need more information.

Regards,  
Ali

---

**From:** Matt Tobias [<mailto:matt@floatingstructures.com>]  
**Sent:** Friday, January 19, 2018 11:55 AM  
**To:** Nayeri, Ali  
**Subject:** RE: Harbour Green Docks - Pilehoop replacement

Ali,

For our engineers to review new pilehoop design and provide shop drawings & engineering will be \$2900. After design & engineering of the pilehoop it may cause us to update our pricing because of extras that are being recommended by the engineer?

Attached are the original engineering drawings for the project, you can see this dock was designed for 35ft vessel, although I would suspect that this was the original request not necessary the limits of the dock?

Regards,

Mathias Tobias  
Senior Project Manager





**IMFS International Marine Floatation Systems Inc.**

9365 River Road, Delta, BC, Canada V4G 1B4

Tel (604)930-9903, (Ext. 2) Cell: 604-908-6889

[Website](#) | [Instagram](#) | [Linkedin](#) | [Facebook](#) | [Pinterest](#)

## CONFIDENTIALITY NOTICE

This communication is intended for the exclusive use of the addressee identified above.

Its content is confidential and may contain privileged information.

If you have received this communication by error, please notify the sender and delete the message without copying or disclosing.

---

**From:** Nayeri, Ali [<mailto:Ali.Nayeri@vancouver.ca>]

**Sent:** January-18-18 6:40 PM

**To:** Matt Tobias

**Subject:** RE: Harbour Green Docks - Pilehoop replacement

Hi Matt,

Thank you for preparing this budget proposal for us. I have the following questions:

- a) The proposal states that the budget excludes engineering. Is additional engineering required for the repairs that you are proposing? If so, what would be the estimated cost of the engineering work.
- b) How long will these repairs takes? I anticipate that there would be a need to close the dock during the repairs. As I had mentioned, there is a currently a ferry operation that uses the dock, so I need to give our management team a sense of the possible impact.
- c) How long will the proposed repairs last? Is this a stop-gap measure or is this anticipated to resolve the issues?
- d) Will these repairs allow the dock to continue to be used for commercial ferry operations? i.e. 8 scheduled docking/off-loading per day and average of 120 people loading/off-loading per day PLUS other non-scheduled commercial activity? If not what would that take / what is the issue preventing that?
- e) What would be the largest vessel and weight allowable once repairs are done?
- f) At the site meeting we discussed possibilities for dampening the motion of the floats in response to the waves in the inner harbour. I saw that you had included hard rubber sandwiched between the UHMW and the C channel for this. Will that last given the conditions there? Have you successfully used this design previously in similar conditions?
- g) What are the expected maintenance requirements for the new pile brackets? Are there things that we could do to reduce the maintenance requirements?
- h) Is there anything else that we can do to improve the resilience of the dock?

Thanks,  
Ali

---

**From:** Matt Tobias [<mailto:matt@floatingstructures.com>]

**Sent:** Thursday, January 18, 2018 10:17 AM

**To:** Nayeri, Ali

**Subject:** Harbour Green Docks - Pilehoop replacement

Ali,

I apologize for the delay please see attached proposal for replacement of 13 pilehoops at Harbour Green Dock. Let me know if you have any questions or concerns?

Regards,

Mathias Tobias  
Senior Project Manager



**IMFS International Marine Floatation Systems Inc.**



9365 River Road, Delta, BC, Canada V4G 1B4  
Tel (604)930-9903, (Ext. 2) Cell: 604-908-6889  
[Website](#) | [Instagram](#) | [Linkedin](#) | [Facebook](#) | [Pinterest](#)

**CONFIDENTIALITY NOTICE**

This communication is intended for the exclusive use of the addressee identified above.  
Its content is confidential and may contain privileged information.  
If you have received this communication by error, please notify the sender and delete the message without copying or disclosing.

## Harbour Green Dock - Pile Brackets Update



overview\_01



pile\_01



## Harbour Green Dock - Pile Brackets Update



pile\_02



pile\_03



## Harbour Green Dock - Pile Brackets Update



pile\_04



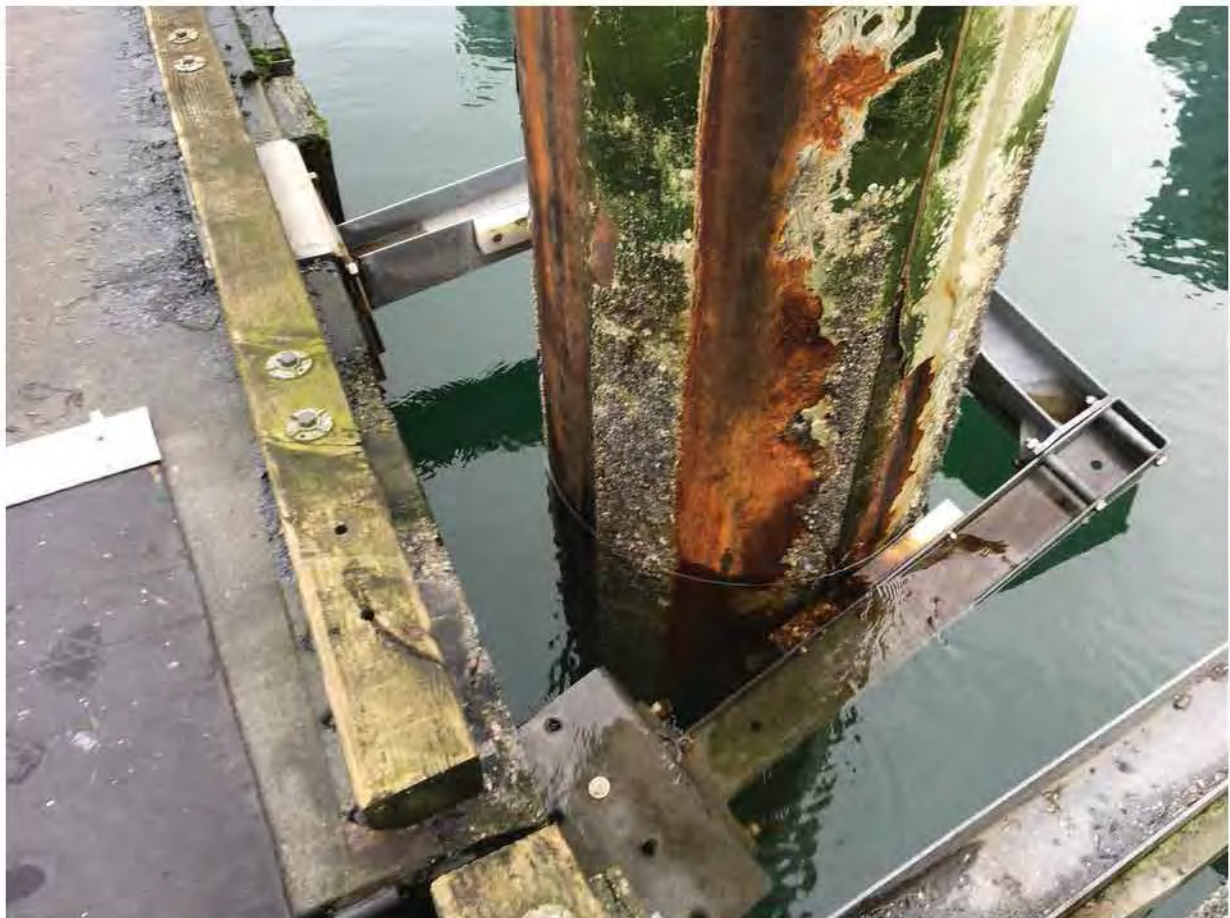
pile\_05



## Harbour Green Dock - Pile Brackets Update



pile\_05\_and\_06



pile\_06\_view\_1



## Harbour Green Dock - Pile Brackets Update



pile\_06\_view\_2



pile\_07



## Harbour Green Dock - Pile Brackets Update



pile\_08



pile 08 and 09



## Harbour Green Dock - Pile Brackets Update



pile\_09\_view\_1



pile\_09\_view\_2



## Harbour Green Dock - Pile Brackets Update



pile\_10



pile\_11



## Harbour Green Dock - Pile Brackets Update



pile\_12\_view\_1



pile\_12\_view\_2



## Harbour Green Dock - Pile Brackets Update



pile\_13\_view\_1



pile\_13\_view\_2

From: "Matt Tobias" <matt@floatingstructures.com>  
To: "Nayeri, Ali" <Ali.Nayeri@vancouver.ca>  
Date: 1/19/2018 12:55:03 PM  
Subject: RE: Harbour Green Docks - Pilehoop replacement  
Attachments: Harbour Green as built allspan drawings.pdf

Ali,

For our engineers to review new pilehoop design and provide shop drawings & engineering will be \$2900. After design & engineering of the pilehoop it may cause us to update our pricing because of extras that are being recommended by the engineer?

Attached are the original engineering drawings for the project, you can see this dock was designed for 35ft vessel, although I would suspect that this was the original request not necessary the limits of the dock?

Regards,

Mathias Tobias  
Senior Project Manager

 **IMFS International Marine Floatation Systems Inc.**  
9365 River Road, Delta, BC, Canada V4G 1B4  
Tel (604)930-9903, (Ext. 2) Cell: 604-908-6889  
[Website](#) | [Instagram](#) | [Linkedin](#) | [Facebook](#) | [Pinterest](#)

**CONFIDENTIALITY NOTICE**  
This communication is intended for the exclusive use of the addressee identified above.  
ts content is confidential and may contain privileged information.  
If you have received this communication by error, please notify the sender and delete the message without copying or disclosing.

**From:** Nayeri, Ali [mailto:Ali.Nayeri@vancouver.ca]  
**Sent:** January-18-18 6:40 PM  
**To:** Matt Tobias  
**Subject:** RE: Harbour Green Docks - Pilehoop replacement

Hi Matt,

Thank you for preparing this budget proposal for us. I have the following questions:

- a) The proposal states that the budget excludes engineering. Is additional engineering required for the repairs that you are proposing? If so, what would be the estimated cost of the engineering work.
- b) How long will these repairs takes? I anticipate that there would be a need to close the dock during the repairs. As I had mentioned, there is a currently a ferry operation that uses the dock, so I need to give our management team a sense of the possible impact.
- c) How long will the proposed repairs last? Is this a stop-gap measure or is this anticipated to resolve the issues?
- d) Will these repairs allow the dock to continue to be used for commercial ferry operations? i.e. 8 scheduled docking/off-loading per day and average of 120 people loading/off-loading per day PLUS other non-scheduled commercial activity? If not what would that take / what is the issue preventing that?
- e) What would be the largest vessel and weight allowable once repairs are done?
- f) At the site meeting we discussed possibilities for dampening the motion of the floats in response to the waves in the inner harbour. I saw that you had included hard rubber sandwiched between the UHMW and the C channel for this. Will that last given the conditions there? Have you successfully used this design previously in similar conditions?
- g) What are the expected maintenance requirements for the new pile brackets? Are there things that we could do to reduce the maintenance requirements?
- h) Is there anything else that we can do to improve the resilience of the dock?

Thanks,  
Ali


**From:** Matt Tobias [mailto:matt@floatingstructures.com]  
**Sent:** Thursday, January 18, 2018 10:17 AM  
**To:** Nayeri, Ali  
**Subject:** Harbour Green Docks - Pilehoop replacement

Ali,

I apologize for the delay please see attached proposal for replacement of 13 pilehoops at Harbour Green Dock. Let me know if you have any questions or concerns?

Regards,

Mathias Tobias  
Senior Project Manager

 **IMFS International Marine Floatation Systems Inc.**  
9365 River Road, Delta, BC, Canada V4G 1B4  
Tel (604)930-9903, (Ext. 2) Cell: 604-908-6889  
[Website](#) | [Instagram](#) | [Linkedin](#) | [Facebook](#) | [Pinterest](#)

**CONFIDENTIALITY NOTICE**  
This communication is intended for the exclusive use of the addressee identified above.  
ts content is confidential and may contain privileged information.  
If you have received this communication by error, please notify the sender and delete the message without copying or disclosing.



























From: ["Matt Tobias" <matt@floatingstructures.com>](mailto:matt@floatingstructures.com)  
To: ["Nayeri, Ali" <Ali.Nayeri@vancouver.ca>](mailto:Ali.Nayeri@vancouver.ca)  
Date: 1/19/2018 10:09:22 AM  
Subject: RE: Harbour Green Docks - Pilehoop replacement

Ali, See comments below.

Regards,

Mathias Tobias  
Senior Project Manager



**IMFS International Marine Floatation Systems Inc.**

9365 River Road, Delta, BC, Canada V4G 1B4  
Tel (604)930-9903, (Ext. 2) Cell: 604-908-6889  
[Website](#) | [Instagram](#) | [Linkedin](#) | [Facebook](#) | [Pinterest](#)

#### CONFIDENTIALITY NOTICE

This communication is intended for the exclusive use of the addressee identified above.  
Its content is confidential and may contain privileged information.  
If you have received this communication by error, please notify the sender and delete the message without copying or disclosing.

---

**From:** Nayeri, Ali [mailto:Ali.Nayeri@vancouver.ca]  
**Sent:** January-18-18 6:40 PM  
**To:** Matt Tobias  
**Subject:** RE: Harbour Green Docks - Pilehoop replacement

Hi Matt,

Thank you for preparing this budget proposal for us. I have the following questions:

- a) The proposal states that the budget excludes engineering. Is additional engineering required for the repairs that you are proposing? If so, what would be the estimated cost of the engineering work. **I would not expect that engineering is required for this type of repair, but I will try and get a price for you.**
- b) How long will these repairs take? I anticipate that there would be a need to close the dock during the repairs. As I had mentioned, there is currently a ferry operation that uses the dock, so I need to give our management team a sense of the possible impact. **I would expect that not much more than 2 weeks**
- c) How long will the proposed repairs last? Is this a stop-gap measure or is this anticipated to resolve the issues? **This would replace the pilebrackets that are there and stop the constant pounding.**
- d) Will these repairs allow the dock to continue to be used for commercial ferry operations? i.e. 8 scheduled docking/off-loading per day and average of 120 people loading/off-loading per day PLUS other non-scheduled commercial activity? If not what would that take / what is the issue preventing that? **Most of the work will be done inside the docks system, so I would expect that as long as there is proper supervision/direction and separation of public and work site that the ferry operation could still be utilized.**
- e) What would be the largest vessel and weight allowable once repairs are done? **This again would need to be reviewed by our engineers? I will ask them to put that as part of their review.**
- f) At the site meeting we discussed possibilities for dampening the motion of the floats in response to the waves in the inner harbour. I saw that you had included hard rubber sandwiched between the UHMW and the C channel for this. Will that last given the conditions there? Have you successfully used this design previously in similar conditions? **Anything that is installed needs to be maintained over time and checked after periods of storm, the intent is to dampen the motion which will hopefully ease the shock on the connections.**
- g) What are the expected maintenance requirements for the new pile brackets? Are there things that we could do



to reduce the maintenance requirements? We will be able to put together a maintenance description once we move forward. As mentioned above once this installation is installed it should be checked after every storm condition, until we can determine that the new connections are working as they should. The minute something gets loose or broken as it has in the past, this situation only gets worse and ends up doing more damage over time, so early detection of issues is the best maintenance.

- h) Is there anything else that we can do to improve the resilience of the dock? The reality is this dock system is very resilient, the only thing that has gone on here is that the pile bracket connections have not been maintained and there has been no real attention paid to any of the connections, so the system has failed in one area and then continued from there. In the future it would be best to make the operators and users of the dock aware of the dock system and tell them to report any loose connections or pad wear to COV, so these maintenance issues can be resolved early before they become a costly replacement or repair. I don't think that this system was designed for the large vessels that now occupy the dock. But I will inquire about this and get back to you.

Thanks,  
Ali

---

**From:** Matt Tobias [<mailto:matt@floatingstructures.com>]  
**Sent:** Thursday, January 18, 2018 10:17 AM  
**To:** Nayeri, Ali  
**Subject:** Harbour Green Docks - Pilehoop replacement

Ali,

I apologize for the delay please see attached proposal for replacement of 13 pilehoops at Harbour Green Dock. Let me know if you have any questions or concerns?

Regards,

Mathias Tobias  
Senior Project Manager



**IMFS International Marine Floatation Systems Inc.**

9365 River Road, Delta, BC, Canada V4G 1B4

Tel (604)930-9903, (Ext. 2) Cell: 604-908-6889

[Website](#) | [Instagram](#) | [Linkedin](#) | [Facebook](#) | [Pinterest](#)

## CONFIDENTIALITY NOTICE

This communication is intended for the exclusive use of the addressee identified above.

Its content is confidential and may contain privileged information.

If you have received this communication by error, please notify the sender and delete the message without copying or disclosing.



From: ["Harper, Margo" <Margo.Harper@vancouver.ca>](mailto:Margo.Harper@vancouver.ca)  
To: ["Mack, Tiina" <tiina.mack@vancouver.ca>](mailto:tiina.mack@vancouver.ca)  
["Wilton, Shauna" <Shauna.Wilton@vancouver.ca>](mailto:Shauna.Wilton@vancouver.ca)  
["Bromley, Malcolm" <Malcolm.Bromley@vancouver.ca>](mailto:Malcolm.Bromley@vancouver.ca)  
["Araujo, Sev" <Sev.Araujo@vancouver.ca>](mailto:Sev.Araujo@vancouver.ca)

Date: 2/6/2018 3:43:31 PM

Subject: RE: Harbour Green Docks - Pilehoop replacement - CLOSE for SAFETY NOW

Ok please keep me posted as this could well light up and we need to be prepared w/ messaging.

---

**From:** Mack, Tiina  
**Sent:** Tuesday, February 06, 2018 2:13 PM  
**To:** Wilton, Shauna; Bromley, Malcolm; Araujo, Sev  
**Cc:** Harper, Margo; Nayeri, Ali  
**Subject:** RE: Harbour Green Docks - Pilehoop replacement - CLOSE for SAFETY NOW

Thanks all,

The only decision Ali and I need is the level of repair we need to arrange, i.e. what will this dock be used for – recreation or. Commercial?

If commercial, we likely will need additional design work and additional funds, we only have funding for repairing it to prior state. This will also take more time.

The dock will be closed until it is repaired.

Ali and I will stand by

Tiina

---

**From:** Wilton, Shauna  
**Sent:** Tuesday, February 06, 2018 2:08 PM  
**To:** Bromley, Malcolm; Mack, Tiina; Araujo, Sev  
**Cc:** Harper, Margo  
**Subject:** RE: Harbour Green Docks - Pilehoop replacement - CLOSE for SAFETY NOW

Sev already met with me on this today and is working on a plan for notice to commissioners, commercial partners, etc. Sev, please ensure Margo is in the loop.

---

**From:** Bromley, Malcolm  
**Sent:** Tuesday, February 06, 2018 1:04 PM  
**To:** Mack, Tiina  
**Cc:** Wilton, Shauna; Harper, Margo  
**Subject:** Re: Harbour Green Docks - Pilehoop replacement - CLOSE for SAFETY NOW

Safety is paramount. Let's try to confirm and rectify. Failing that close and develop communication plan.  
On Feb 6, 2018, at 1:00 PM, Mack, Tiina <[tiina.mack@vancouver.ca](mailto:tiina.mack@vancouver.ca)> wrote:

Fyi...

---

**From:** Nayeri, Ali  
**Sent:** Tuesday, February 06, 2018 12:19 PM  
**To:** Araujo, Sev  
**Cc:** Silva, Octavio; Mack, Tiina  
**Subject:** FW: Harbour Green Docks - Pilehoop replacement



Hi Sev,

Here is the letter from AE. In light of all the issues and AE's recommendation, I think we should completely close off the dock since it is not possible to ensure compliance by commercial users.

Regards,  
Ali

---

**From:** Mike Hanson [<mailto:hansonm@ae.ca>]  
**Sent:** Tuesday, February 06, 2018 12:03 PM  
**To:** Nayeri, Ali  
**Subject:** RE: Harbour Green Docks - Pilehoop replacement

Thanks Ali, its difficult to tell for certain from our photos as well, where the brackets at the east landing were sitting previously.

Please find the letter attached as per your request. If you have any questions please don't hesitate to ask

Regards,

**Mike Hanson, P.Eng.**  
Bridge Engineer  
Associated Engineering (B.C.) Ltd.  
#500 – 2889 East 12<sup>th</sup> Avenue, Vancouver, BC V5M 4T5  
Tel: [604.293.1411](tel:604.293.1411) | Cel: [604.928.9853](tel:604.928.9853) | Direct: [236.317.2325](tel:236.317.2325)

---

**From:** Nayeri, Ali [<mailto:Ali.Nayeri@vancouver.ca>]  
**Sent:** Tuesday, February 06, 2018 9:23 AM  
**To:** Mike Hanson <[hansonm@ae.ca](mailto:hansonm@ae.ca)>  
**Subject:** FW: Harbour Green Docks - Pilehoop replacement

Hi Mike,

I discussed this issue with Matt. His recollection is that the brackets on the east landing float were always lower. Unfortunately we don't have any baselines, so I can't say if it was like this or not. Regardless, I think we will need to do some rehabilitation work on the floats (especially concrete repairs).

I thought I should send you these photos as well. As a result of the large gaps around the piles, the floats are moving side to side, which means the gaps between them can increase and decrease quite significantly. Our fabrication shop had put in some brackets to support the rubber transition between the west landing float (float 1) and float 2. Those brackets are causing damage to the floats when they collide with each other.

Thanks,  
Ali

---

**From:** Matt Tobias [<mailto:matt@floatingstructures.com>]  
**Sent:** Saturday, February 03, 2018 11:03 AM  
**To:** Nayeri, Ali  
**Subject:** Re: Harbour Green Docks - Pilehoop replacement

Ali,

Pile 12 & 13, have been like that for quite sometime maybe even from the beginning, we can also address this when you get approval to move forward with the remediation

Cheers,  
M

Sent from my iPhone



Malcolm Bromley  
General Manager - Vancouver Park Board

On Feb 2, 2018, at 4:51 PM, Nayeri, Ali <[Ali.Nayeri@vancouver.ca](mailto:Ali.Nayeri@vancouver.ca)> wrote:

Hi Matt,

I have provided your estimate to our management and I am just waiting to see how to proceed. In the meantime, I am a bit worried that conditions could get worse, so I try to visit there whenever I can. I was at the dock earlier today and noticed that the pile brackets 12 and 13 which are attached to the east landing float (float 8) are partially submerged in water. All other brackets are out of water (see attached photos). Unfortunately, I don't have a baseline to compare to, but I was concerned that the float might either not be floating as high as it was intended to or was being prevented from moving up by something else.

Do you think this requires immediate investigation?

Thanks,  
Ali

---

**From:** Nayeri, Ali  
**Sent:** Friday, January 19, 2018 2:20 PM  
**To:** 'Matt Tobias'  
**Subject:** RE: Harbour Green Docks - Pilehoop replacement

Hi Matt,

I appreciate your quick responses to my questions. I am preparing a summary to discuss this with our senior management. This structure was not on our list of projects so with this information, we will need to figure out the funding piece.

I'll be in touch if we need more information.

Regards,  
Ali

---

**From:** Matt Tobias [<mailto:matt@floatingstructures.com>]  
**Sent:** Friday, January 19, 2018 11:55 AM  
**To:** Nayeri, Ali  
**Subject:** RE: Harbour Green Docks - Pilehoop replacement

Ali,

For our engineers to review new pilehoop design and provide shop drawings & engineering will be \$2900. After design & engineering of the pilehoop it may cause us to update our pricing because of extras that are being recommended by the engineer?

Attached are the original engineering drawings for the project, you can see this dock was designed for 35ft vessel, although I would suspect that this was the original request not necessary the limits of the dock?

Regards,

Mathias Tobias  
Senior Project Manager

<[image001.jpg](#)>IMFS International Marine Floatation Systems Inc.  
9365 River Road, Delta, BC, Canada V4G 1B4  
Tel (604)930-9903, (Ext. 2) Cell: 604-908-6889



## CONFIDENTIALITY NOTICE

This communication is intended for the exclusive use of the addressee identified above.

Its content is confidential and may contain privileged information.

If you have received this communication by error, please notify the sender and delete the message without copying or disclosing.

---

**From:** Nayeri, Ali [<mailto:Ali.Nayeri@vancouver.ca>]  
**Sent:** January-18-18 6:40 PM  
**To:** Matt Tobias  
**Subject:** RE: Harbour Green Docks - Pilehoop replacement

Hi Matt,

Thank you for preparing this budget proposal for us. I have the following questions:

- a. The proposal states that the budget excludes engineering. Is additional engineering required for the repairs that you are proposing? If so, what would be the estimated cost of the engineering work.
- How long will these repairs take? I anticipate that there would be a need to close the dock during the repairs. As I had mentioned, there is currently a ferry operation that uses the dock, so I need to give our management team a sense of the possible impact.
- How long will the proposed repairs last? Is this a stop-gap measure or is this anticipated to resolve the issues?
- Will these repairs allow the dock to continue to be used for commercial ferry operations? i.e. 8 scheduled docking/off-loading per day and average of 120 people loading/off-loading per day PLUS other non-scheduled commercial activity? If not what would that take / what is the issue preventing that?
- What would be the largest vessel and weight allowable once repairs are done?
- At the site meeting we discussed possibilities for dampening the motion of the floats in response to the waves in the inner harbour. I saw that you had included hard rubber sandwiched between the UHMW and the C channel for this. Will that last given the conditions there? Have you successfully used this design previously in similar conditions?
- What are the expected maintenance requirements for the new pile brackets? Are there things that we could do to reduce the maintenance requirements?
- Is there anything else that we can do to improve the resilience of the dock?

Thanks,  
Ali

---

**From:** Matt Tobias [<mailto:matt@floatingstructures.com>]  
**Sent:** Thursday, January 18, 2018 10:17 AM  
**To:** Nayeri, Ali  
**Subject:** Harbour Green Docks - Pilehoop replacement

Ali,

I apologize for the delay please see attached proposal for replacement of 13 pilehoops at Harbour Green Dock. Let me know if you have any questions or concerns?

Regards,

Mathias Tobias  
Senior Project Manager

<image001.jpg>IMFS International Marine Floatation Systems Inc.  
9365 River Road, Delta, BC, Canada V4G 1B4  
Tel (604)930-9903, (Ext. 2) Cell: 604-908-6889  
[Website](#) | [Instagram](#) | [Linkedin](#) | [Facebook](#) | [Pinterest](#)



## CONFIDENTIALITY NOTICE

This communication is intended for the exclusive use of the addressee identified above.

Its content is confidential and may contain privileged information.

If you have received this communication by error, please notify the sender and delete the message without copying or disclosing.

<2018\_02\_02\_pile\_photos.pdf>

You may [unsubscribe from Associated's electronic communications](#) at any time.

<ltr\_HarbourGreen\_VancouverParks\_20180206\_mh.pdf>

From: ["Nayeri, Ali" <Ali.Nayeri@vancouver.ca>](mailto:Ali.Nayeri@vancouver.ca)  
To: ["Mike Hanson" <hansonm@ae.ca>](mailto:hansonm@ae.ca)  
Date: 2/6/2018 5:48:52 PM  
Subject: RE: Harbour Green Docks - Pilehoop replacement

Thanks Mike.  
The letter is much appreciated.  
Regards,  
Ali

---

**From:** Mike Hanson [<mailto:hansonm@ae.ca>]  
**Sent:** Tuesday, February 06, 2018 12:03 PM  
**To:** Nayeri, Ali  
**Subject:** RE: Harbour Green Docks - Pilehoop replacement

Thanks Ali, its difficult to tell for certain from our photos as well, where the brackets at the east landing were sitting previously.

Please find the letter attached as per your request. If you have any questions please don't hesitate to ask

Regards,

**Mike Hanson, P.Eng.**  
Bridge Engineer  
Associated Engineering (B.C.) Ltd.  
#500 – 2889 East 12<sup>th</sup> Avenue, Vancouver, BC V5M 4T5  
Tel: [604.293.1411](tel:604.293.1411) | Cel: [604.928.9853](tel:604.928.9853) | Direct: [236.317.2325](tel:236.317.2325)

---

**From:** Nayeri, Ali [<mailto:Ali.Nayeri@vancouver.ca>]  
**Sent:** Tuesday, February 06, 2018 9:23 AM  
**To:** Mike Hanson <[hansonm@ae.ca](mailto:hansonm@ae.ca)>  
**Subject:** FW: Harbour Green Docks - Pilehoop replacement

Hi Mike,

I discussed this issue with Matt. His recollection is that the brackets on the east landing float were always lower. Unfortunately we don't have any baselines, so I can't say if it was like this or not. Regardless, I think we will need to do some rehabilitation work on the floats (especially concrete repairs).

I thought I should send you these photos as well. As a result of the large gaps around the piles, the floats are moving side to side, which means the gaps between them can increase and decrease quite significantly. Our fabrication shop had put in some brackets to support the rubber transition between the west landing float (float 1) and float 2. Those brackets are causing damage to the floats when they collide with each other.

Thanks,  
Ali

---

**From:** Matt Tobias [<mailto:matt@floatingstructures.com>]  
**Sent:** Saturday, February 03, 2018 11:03 AM  
**To:** Nayeri, Ali  
**Subject:** Re: Harbour Green Docks - Pilehoop replacement

Ali,

Pile 12 & 13, have been like that for quite sometime maybe even from the beginning, we can also address this when you get approval to move forward with the remediation

Cheers,



M

Sent from my iPhone

On Feb 2, 2018, at 4:51 PM, Nayeri, Ali <[Ali.Nayeri@vancouver.ca](mailto:Ali.Nayeri@vancouver.ca)> wrote:

Hi Matt,

I have provided your estimate to our management and I am just waiting to see how to proceed. In the meantime, I am a bit worried that conditions could get worse, so I try to visit there whenever I can. I was at the dock earlier today and noticed that the pile brackets 12 and 13 which are attached to the east landing float (float 8) are partially submerged in water. All other brackets are out of water (see attached photos). Unfortunately, I don't have a baseline to compare to, but I was concerned that the float might either not be floating as high as it was intended to or was being prevented from moving up by something else.

Do you think this requires immediate investigation?

Thanks,  
Ali

---

**From:** Nayeri, Ali  
**Sent:** Friday, January 19, 2018 2:20 PM  
**To:** 'Matt Tobias'  
**Subject:** RE: Harbour Green Docks - Pilehoop replacement

Hi Matt,

I appreciate your quick responses to my questions. I am preparing a summary to discuss this with our senior management. This structure was not on our list of projects so with this information, we will need to figure out the funding piece.

I'll be in touch if we need more information.

Regards,  
Ali

---

**From:** Matt Tobias [<mailto:matt@floatingstructures.com>]  
**Sent:** Friday, January 19, 2018 11:55 AM  
**To:** Nayeri, Ali  
**Subject:** RE: Harbour Green Docks - Pilehoop replacement

Ali,

For our engineers to review new pilehoop design and provide shop drawings & engineering will be \$2900. After design & engineering of the pilehoop it may cause us to update our pricing because of extras that are being recommended by the engineer?

Attached are the original engineering drawings for the project, you can see this dock was designed for 35ft vessel, although I would suspect that this was the original request not necessary the limits of the dock?

Regards,

Mathias Tobias  
Senior Project Manager



IMFS International Marine Floatation Systems Inc.

9365 River Road, Delta, BC, Canada V4G 1B4



## CONFIDENTIALITY NOTICE

This communication is intended for the exclusive use of the addressee identified above.  
Its content is confidential and may contain privileged information.  
If you have received this communication by error, please notify the sender and delete the message without copying or disclosing.

---

**From:** Nayeri, Ali [<mailto:Ali.Nayeri@vancouver.ca>]  
**Sent:** January-18-18 6:40 PM  
**To:** Matt Tobias  
**Subject:** RE: Harbour Green Docks - Pilehoop replacement

Hi Matt,

Thank you for preparing this budget proposal for us. I have the following questions:

- a. The proposal states that the budget excludes engineering. Is additional engineering required for the repairs that you are proposing? If so, what would be the estimated cost of the engineering work.
- How long will these repairs take? I anticipate that there would be a need to close the dock during the repairs. As I had mentioned, there is currently a ferry operation that uses the dock, so I need to give our management team a sense of the possible impact.
- How long will the proposed repairs last? Is this a stop-gap measure or is this anticipated to resolve the issues?
- Will these repairs allow the dock to continue to be used for commercial ferry operations? i.e. 8 scheduled docking/off-loading per day and average of 120 people loading/off-loading per day PLUS other non-scheduled commercial activity? If not what would that take / what is the issue preventing that?
- What would be the largest vessel and weight allowable once repairs are done?
- At the site meeting we discussed possibilities for dampening the motion of the floats in response to the waves in the inner harbour. I saw that you had included hard rubber sandwiched between the UHMW and the C channel for this. Will that last given the conditions there? Have you successfully used this design previously in similar conditions?
- What are the expected maintenance requirements for the new pile brackets? Are there things that we could do to reduce the maintenance requirements?
- Is there anything else that we can do to improve the resilience of the dock?

Thanks,  
Ali

---

**From:** Matt Tobias [<mailto:matt@floatingstructures.com>]  
**Sent:** Thursday, January 18, 2018 10:17 AM  
**To:** Nayeri, Ali  
**Subject:** Harbour Green Docks - Pilehoop replacement

Ali,

I apologize for the delay please see attached proposal for replacement of 13 pilehoops at Harbour Green Dock. Let me know if you have any questions or concerns?

Regards,

Mathias Tobias  
Senior Project Manager



**IMFS International Marine Floatation Systems Inc.**

9365 River Road, Delta, BC, Canada V4G 1B4  
Tel (604)930-9903, (Ext. 2) Cell: 604-908-6889  
[Website](#) | [Instagram](#) | [Linkedin](#) | [Facebook](#) | [Pinterest](#)



## CONFIDENTIALITY NOTICE

This communication is intended for the exclusive use of the addressee identified above.

Its content is confidential and may contain privileged information.

If you have received this communication by error, please notify the sender and delete the message without copying or disclosing.

<2018\_02\_02\_pile\_photos.pdf>

You may [unsubscribe from Associated's electronic communications](#) at any time.

From: "Nayeri, Ali" <Ali.Nayeri@vancouver.ca>

To: "Foster, Ian" <Ian.Foster@vancouver.ca>

Date: 2/6/2018 9:20:34 AM

Subject: Re: Harbour Green Float

Thanks Ian. That makes sense. There is so much free play at the piles in all directions that it is a miracle the dock is still serviceable.

I will try and find out who closed the dock. Let me know if it is still locked.

Thanks again,

Ali

On Feb 6, 2018, at 7:56 AM, Foster, Ian <Ian.Foster@vancouver.ca> wrote:

The plates were installed after the dock was inspected for the Vancouver triathlon, they were to support the matting to take away the sag, because the pile rings are worn, the dock now moves East and West causing it to change the gap between the two floats, now you have a larger gap at the East end of the Float, this gap will change from end to end depending on tide and wave action. The matting always covers the gap but with the movement it creates a large sag in the mat which could become a tripping hazard.

I don't know what the agreement is with the water taxi , but right now once he drops off his riders there is no way for them to exit the dock except to climb over a locked gate, he was very upset yesterday and did voice his concerns to my crew on site.

I am going by the site first thing this morning to have a quick look

Ian

---

**From:** Nayeri, Ali

**Sent:** Monday, February 05, 2018 5:55 PM

**To:** Foster, Ian

**Subject:** RE: Harbour Green Float

Thanks Ian,

I haven't gotten any information back on why the dock was closed. So let's just keep it closed for now until we are told otherwise.

Do we know why these brackets are there? The original drawings show rubber fenders at the joints to prevent the floats from colliding with each other. These brackets are just destroying that concrete edge. Are they meant to structurally support the rubber belt on top?

Also, is it fair to say the gap is about 30-40 cm (12-16 in)? Has it widened over time? I think this basically needs an expansion joint because it is so wide and seems to move laterally quite a lot.

Thanks again for band-aiding this dock while we try and figure out what to do,  
Ali

---

**From:** Foster, Ian

**Sent:** Monday, February 05, 2018 2:39 PM

**To:** Nayeri, Ali

**Subject:** Harbour Green Float

Pictures of damage at Harbour Green Dock

Ian





From: ["Nayeri, Ali" <Ali.Nayeri@vancouver.ca>](mailto:Ali.Nayeri@vancouver.ca)  
To: ["Foster, Ian" <Ian.Foster@vancouver.ca>](mailto:Ian.Foster@vancouver.ca)  
Date: 1/12/2018 7:23:25 PM  
Subject: RE: Harbour Green Floats  
Attachments: Drawings - Harbour Green Dock.pdf

Hi Ian,

It was great seeing you at Vanier and thanks for letting me know about the concerns. As I mentioned, I met with Matt Tobias from IMFS (original fabricators) before the holidays and he agreed to provide us with some high level budgets for (1) immediate repairs to prevent the floats from detaching and (2) for complete upgrades to make the floats more resilient to the wave regime and the types of vessels that (illegally) use/approach this dock . I just sent him a reminder email so hopefully he will get back to me next week. Once I've got the preliminary numbers, I will raise this again with Sev and other senior managers to see how we need to proceed since we have no money to deal with this right now.

In the meantime, I don't know if you any ideas on how to temporarily secure the floats in place. I am going to think about it as well! I have attached the drawings of the float in case you need to have a look.

Many thanks,  
Ali

---

**From:** Foster, Ian  
**Sent:** Friday, January 12, 2018 6:57 AM  
**To:** Nayeri, Ali  
**Cc:** Augustine, Ray; Doherty, Ross  
**Subject:** Harbour Green Floats

Morning Ali,

I am not sure where you stand on the repairs to Harbour Green Float but we received an e mail from Tim Collins reporting some more damage to the piling rings, Ross Doherty did a site assessment and found the piling rings on two more pilings broken ( pictures can be supplied if needed ). We feel that there is a very narrow possibility that they could break away but want some direction as to what you would like us to do, for optics we might want to add a chain around the piling as an extra measure in case the piling ring does fail completely. As discussed before the repairs that need to be done are above our equipment's capabilities if the floats stay in the water.

Thanks  
Ian Foster

































From: "Nayeri, Ali" <Ali.Nayeri@vancouver.ca>  
To: "Araujo, Sev" <sev.araujo@vancouver.ca>  
Date: 3/2/2018 12:02:30 PM  
Subject: RE: Harbour Green Public Dock Closure Challenges  
Attachments: draft\_alternate\_locations.pdf

Hi Sev,

Please find attached a draft of the sign. I've left you a full scale plot at your desk to see if legibility is okay. Daria has reviewed the content and made some changes to the wording.

Could you check to make sure that the locations marked on the map are correct and that location for clearing customs is correct. I couldn't find Dock F on the map. I wasn't also sure if people should be reporting to False Creek Harbour Authority or the CBSA.

Once we are happy with the design, I can send it to the sign shop.

Thanks,  
Ali

---

**From:** Araujo, Sev  
**Sent:** Thursday, March 01, 2018 5:24 PM  
**To:** Nayeri, Ali  
**Cc:** Mack, Tiina; Collins, Tim  
**Subject:** FW: Harbour Green Public Dock Closure Challenges

Hi Ali,

Further to the email below we need to add an additional sign on the middle piling facing the water with the following information

- Closest free moorage located in front of Public Market on Granville Island
- Clearing Customs: F Dock at Fisherman's Wharf, False Creek Harbour Authority between Burrard St and Granville St. bridges

Can you please see me when you have a minute. Hoping to have this up next week.

Thanks Ali

**Sev Araujo**  
**Manager, Commercial Operations**  
Vancouver Park Board, City of Vancouver  
o. 604 257 8436 / f. 604 257 8427  
Email: [Sev.Araujo@vancouver.ca](mailto:Sev.Araujo@vancouver.ca)

---

**From:** Araujo, Sev  
**Sent:** Thursday, March 01, 2018 5:13 PM  
**To:** Bromley, Malcolm  
**Cc:** Wilton, Shauna; Mack, Tiina (work)  
**Subject:** RE: Harbour Green Public Dock Closure Challenges

Hi Malcom,

I just spoke to Steven. I will be working with Tiina's staff to create signage and post on pilings facing water indicating:

- Closest free moorage in Coal Harbour/False Creek ... *Granville Island 3hrs*



Steven wanted to pass along his thanks to you as he did not know who to contact. He has my contact info and was appreciative of the call.

**Sev Araujo**

**Manager, Commercial Operations**

Vancouver Park Board, City of Vancouver

o. 604 257 8436 / f. 604 257 8427

Email: [Sev.Araujo@vancouver.ca](mailto:Sev.Araujo@vancouver.ca)

---

**From:** Bromley, Malcolm

**Sent:** Thursday, March 01, 2018 3:36 PM

**To:** Araujo, Sev

**Cc:** Wilton, Shauna

**Subject:** FW: Harbour Green Public Dock Closure Challenges

Sev,

Can you please review and advise the writer of our plans. See how you can help. Thanks

---

**From:** Steven Varley [<mailto:steven@coalharbourmarina.com>]

**Sent:** Thursday, March 01, 2018 2:57 PM

**To:** Bromley, Malcolm

**Cc:** Sangalang, Ellen

**Subject:** Harbour Green Public Dock Closure Challenges

Malcolm Bromley

General Manager

Vancouver Board of Parks and Recreation

Good afternoon Mr. Bromley,

The sudden closing of the adjacent Parks Board Harbour Green Public Dock is proving to be problematic for dock users, as well as neighbouring properties, and looks to intensify as the fair weather boating season approaches.

At minimum, signage posted at Harbour Green dock advising alternate Parks Board False Creek private vessel passenger drop off and pickup locations is needed. Media and website platform notice of alternate pick up and drop off options pending the dock reopening would also be of public assistance. Additionally, visiting international recreational vessels looking to clear customs (CBSA) in Burrard Inlet are being impacted.

We take pride in being be good neighbours and community members but as a residential and recreational property we are not well suited to daily incursions of vessels (insured?) and passengers trespassing at various hours. In addition to the disappointment expressed by frustrated Harbour Green Dock users to marina staff, tenants are also rightly concerned about increased risk to personal safety and security of property.

At our end we are ordering addition marina signs for ramps, office and docks advising, "*Private Property – No Public Vessel Passenger Pick-Up or Drop Off*". Staff meetings discussing concerns have taken place and a "script" created to communicate standard helpful information to persons unable to utilize Harbour Green Dock who are attempting unauthorized access of our property. We are also sharing concerns with tenants and Coal Harbour property neighbours with suggestions welcomed.

Thank you for your consideration and note I have also entered a related service request on the City of Vancouver website. I am available should a Parks Board representative require addition information or wish to discuss.

Regards,

Steve

Steven Varley


General Manager




## Coal Harbour Marina Ltd.

1525 Coal Harbour Quay  
Vancouver, BC, Canada V6G 3E7  
Tel: 604-681-2628 / Fax: 604-681-4666  
VHF: Channel 66A  
[www.coalharbourmarina.com](http://www.coalharbourmarina.com)



 **Public Moorage**  
Free moorage in  
front of Granville  
Island Public Market

 **Clearing Customs**  
Report to False  
Creek Harbour  
Authority at Dock F,  
Fishermen's Wharf





From: "Nayeri, Ali" <Ali.Nayeri@vancouver.ca>  
To: "Araujo, Sev" <sev.araujo@vancouver.ca>  
Date: 3/2/2018 4:03:49 PM  
Subject: RE: Harbour Green Public Dock Closure Challenges  
Attachments: hg\_alterate\_location\_sign\_final.pdf

Done (revised sign attached)! The request was sent to the sign shop. I'm hoping it would be installed by next Thursday.

---

**From:** Araujo, Sev  
**Sent:** Friday, March 02, 2018 1:05 PM  
**To:** Nayeri, Ali  
**Cc:** Mack, Tiina; Collins, Tim  
**Subject:** RE: Harbour Green Public Dock Closure Challenges

Thank Ali for the quick turnaround.

The map is correct with location

After further thought under Public Moorage I would drop "Free public moorage" and keep "located in front ..."

**Sev Araujo**  
**Manager, Commercial Operations**  
Vancouver Park Board, City of Vancouver  
o. 604 257 8436 / f. 604 257 8427  
Email: [Sev.Araujo@vancouver.ca](mailto:Sev.Araujo@vancouver.ca)

---

**From:** Nayeri, Ali  
**Sent:** Friday, March 02, 2018 11:03 AM  
**To:** Araujo, Sev  
**Cc:** Mack, Tiina; Collins, Tim  
**Subject:** RE: Harbour Green Public Dock Closure Challenges

Hi Sev,

Please find attached a draft of the sign. I've left you a full scale plot at your desk to see if legibility is okay. Daria has reviewed the content and made some changes to the wording.

Could you check to make sure that the locations marked on the map are correct and that location for clearing customs is correct. I couldn't find Dock F on the map. I wasn't also sure if people should be reporting to False Creek Harbour Authority or the CBSA.

Once we are happy with the design, I can send it to the sign shop.

Thanks,  
Ali

---

**From:** Araujo, Sev  
**Sent:** Thursday, March 01, 2018 5:24 PM  
**To:** Nayeri, Ali  
**Cc:** Mack, Tiina; Collins, Tim  
**Subject:** FW: Harbour Green Public Dock Closure Challenges

Hi Ali,

Further to the email below we need to add an additional sign on the middle piling facing the water with the following information



- Closest free moorage located in front of Public Market on Granville Island
- Clearing Customs: F Dock at Fisherman's Wharf, False Creek Harbour Authority between Burrard St and Granville St. bridges

Can you please see me when you have a minute. Hoping to have this up next week.

Thanks Ali

**Sev Araujo**

**Manager, Commercial Operations**

Vancouver Park Board, City of Vancouver

o. 604 257 8436 / f. 604 257 8427

Email: [Sev.Araujo@vancouver.ca](mailto:Sev.Araujo@vancouver.ca)

---

**From:** Araujo, Sev  
**Sent:** Thursday, March 01, 2018 5:13 PM  
**To:** Bromley, Malcolm  
**Cc:** Wilton, Shauna; Mack, Tiina (work)  
**Subject:** RE: Harbour Green Public Dock Closure Challenges

Hi Malcom,

I just spoke to Steven. I will be working with Tiina's staff to create signage and post on pilings facing water indicating:

- Closest free moorage in Coal Harbour/False Creek ... *Granville Island 3hrs*
- Closest location to clear Customs ... *Fishermans Wharf*

Steven wanted to pass along his thanks to you as he did not know who to contact. He has my contact info and was appreciative of the call.

**Sev Araujo**

**Manager, Commercial Operations**

Vancouver Park Board, City of Vancouver

o. 604 257 8436 / f. 604 257 8427

Email: [Sev.Araujo@vancouver.ca](mailto:Sev.Araujo@vancouver.ca)

---

**From:** Bromley, Malcolm  
**Sent:** Thursday, March 01, 2018 3:36 PM  
**To:** Araujo, Sev  
**Cc:** Wilton, Shauna  
**Subject:** FW: Harbour Green Public Dock Closure Challenges

Sev,

Can you please review and advise the writer of our plans. See how you can help. Thanks

---

**From:** Steven Varley [<mailto:steven@coalharbourmarina.com>]  
**Sent:** Thursday, March 01, 2018 2:57 PM  
**To:** Bromley, Malcolm  
**Cc:** Sangalang, Ellen  
**Subject:** Harbour Green Public Dock Closure Challenges

Malcolm Bromley  
General Manager  
Vancouver Board of Parks and Recreation



Good afternoon Mr. Bromley,

The sudden closing of the adjacent Parks Board Harbour Green Public Dock is proving to be problematic for dock users, as well as neighbouring properties, and looks to intensify as the fair weather boating season approaches.

At minimum, signage posted at Harbour Green dock advising alternate Parks Board False Creek private vessel passenger drop off and pickup locations is needed. Media and website platform notice of alternate pick up and drop off options pending the dock reopening would also be of public assistance. Additionally, visiting international recreational vessels looking to clear customs (CBSA) in Burrard Inlet are being impacted.

We take pride in being be good neighbours and community members but as a residential and recreational property we are not well suited to daily incursions of vessels (insured?) and passengers trespassing at various hours. In addition to the disappointment expressed by frustrated Harbour Green Dock users to marina staff, tenants are also rightly concerned about increased risk to personal safety and security of property.

At our end we are ordering addition marina signs for ramps, office and docks advising, *"Private Property – No Public Vessel Passenger Pick-Up or Drop Off"*. Staff meetings discussing concerns have taken place and a "script" created to communicate standard helpful information to persons unable to utilize Harbour Green Dock who are attempting unauthorized access of our property. We are also sharing concerns with tenants and Coal Harbour property neighbours with suggestions welcomed.

Thank you for your consideration and note I have also entered a related service request on the City of Vancouver website. I am available should a Parks Board representative require addition information or wish to discuss.

Regards,  
Steve

Steven Varley  
General Manager  
Coal Harbour Marina Ltd.  
1525 Coal Harbour Quay  
Vancouver, BC, Canada V6G 3E7  
Tel: 604-681-2628 / Fax: 604-681-4666  
VHF: Channel 66A  
[www.coalharbourmarina.com](http://www.coalharbourmarina.com)

## **Public Moorage**

Located in front of  
Granville Island  
Public Market

## **Clearing Customs**

Report to False  
Creek Harbour  
Authority at Dock F,  
Fishermen's Wharf





From: ["Harper, Margo" <Margo.Harper@vancouver.ca>](mailto:Margo.Harper@vancouver.ca)

To: ["Nayeri, Ali" <Ali.Nayeri@vancouver.ca>](mailto:Ali.Nayeri@vancouver.ca)

Date: 2/6/2018 7:34:06 PM

Subject: Re: Memo to Board Harbour Green February 6 2018tkmnotes.docx

Hi all. Who is informing commercial operators and by extension commuters that we have shut the dock down?

Sent from my iPhone

On Feb 6, 2018, at 6:25 PM, Nayeri, Ali <[Ali.Nayeri@vancouver.ca](mailto:Ali.Nayeri@vancouver.ca)> wrote:

Hi Sev,

s.13(1)

A large rectangular area of the email body is redacted with a solid grey background.

Thanks,  
Ali

---

**From:** Mack, Tiina

**Sent:** Tuesday, February 06, 2018 4:27 PM

**To:** Harper, Margo; Araujo, Sev

**Cc:** Nayeri, Ali

**Subject:** Memo to Board Harbour Green February 6 2018tkmnotes.docx

Hi Sev,

My comments are in the attached document via track changes. My gut tells me \$50K is too low for this work – perhaps let's leave the \$\$ out for commercial upgrade until we have more info.

Also, we need to try to get this done sooner otherwise we'll miss the boating season, but Q4 is probably realistic.

Thank you

Tiina

From: ["Araujo, Sev" <Sev.Araujo@vancouver.ca>](mailto:Sev.Araujo@vancouver.ca)

To: ["Mack, Tiina" <tiina.mack@vancouver.ca>](mailto:tiina.mack@vancouver.ca)

["Harper, Margo" <Margo.Harper@vancouver.ca>](mailto:Margo.Harper@vancouver.ca)

Date: 2/6/2018 7:06:00 PM

Subject: RE: Memo to Board Harbour Green February 6 2018tkmnotes.docx

Thank you! Ill reword the \$\$

**Sev Araujo**

**Manager, Commercial Operations**

Vancouver Park Board, City of Vancouver

o. 604 257 8436 / f. 604 257 8427

Email: [Sev.Araujo@vancouver.ca](mailto:Sev.Araujo@vancouver.ca)

---

**From:** Mack, Tiina

**Sent:** Tuesday, February 06, 2018 4:27 PM

**To:** Harper, Margo; Araujo, Sev

**Cc:** Nayeri, Ali

**Subject:** Memo to Board Harbour Green February 6 2018tkmnotes.docx

Hi Sev,

My comments are in the attached document via track changes. My gut tells me \$50K is too low for this work – perhaps let's leave the \$\$ out for commercial upgrade until we have more info.

Also, we need to try to get this done sooner otherwise we'll miss the boating season, but Q4 is probably realistic.

Thank you

Tiina



From: ["Araujo, Sev" <Sev.Araujo@vancouver.ca>](mailto:Sev.Araujo@vancouver.ca)

To: ["Mack, Tiina" <tiina.mack@vancouver.ca>](mailto:tiina.mack@vancouver.ca)  
["Nayeri, Ali" <Ali.Nayeri@vancouver.ca>](mailto:Ali.Nayeri@vancouver.ca)

Date: 2/7/2018 12:02:04 PM

Subject: RE: Memo to Board Harbour Green February 6 2018tkmnotes.docx

s.13(1)

**Sev Araujo**

**Manager, Commercial Operations**

Vancouver Park Board, City of Vancouver

o. 604 257 8436 / f. 604 257 8427

Email: [Sev.Araujo@vancouver.ca](mailto:Sev.Araujo@vancouver.ca)

---

**From:** Mack, Tiina

**Sent:** Wednesday, February 07, 2018 11:00 AM

**To:** Nayeri, Ali; Araujo, Sev

**Cc:** Harper, Margo

**Subject:** RE: Memo to Board Harbour Green February 6 2018tkmnotes.docx

Thanks Ali,

s.13(1)

We should review this with Malcolm and Shauna...

Cheers

Tiina

---

**From:** Nayeri, Ali

**Sent:** Tuesday, February 06, 2018 6:26 PM

**To:** Araujo, Sev

**Cc:** Mack, Tiina; Harper, Margo

**Subject:** RE: Memo to Board Harbour Green February 6 2018tkmnotes.docx

Hi Sev,

s.13(1)

Thanks,  
Ali

---

**From:** Mack, Tiina

**Sent:** Tuesday, February 06, 2018 4:27 PM

**To:** Harper, Margo; Araujo, Sev

**Cc:** Nayeri, Ali

**Subject:** Memo to Board Harbour Green February 6 2018tkmnotes.docx

Hi Sev,

My comments are in the attached document via track changes. My gut tells me \$50K is too low for this work – perhaps let's leave the \$\$ out for commercial upgrade until we have more info.

Also, we need to try to get this done sooner otherwise we'll miss the boating season, but Q4 is probably realistic.

Thank you

Tiina

From: "Harper, Margo" <Margo.Harper@vancouver.ca>  
To: "Araujo, Sev" <Sev.Araujo@vancouver.ca>  
"Wilton, Shauna" <Shauna.Wilton@vancouver.ca>  
Date: 2/8/2018 12:59:54 PM  
Subject: RE: Memo to Board re Harbour Green Dock

Just to be clear there is no permit for commercial use of this dock anymore as operator permit expired Jan 31<sup>st</sup> correct? Have commercial operators been notified of the closure yet, or that still pending?

Is there another user of the dock at this time? A federal use of some kind?

**From:** Araujo, Sev  
**Sent:** Thursday, February 08, 2018 11:53 AM  
**To:** Wilton, Shauna  
**Cc:** Silva, Octavio; Mack, Tiina; Nayeri, Ali; Harper, Margo  
**Subject:** RE: Memo to Board re Harbour Green Dock

Hi Shauna,

Comments in red below

**Sev Araujo**  
**Manager, Commercial Operations**  
Vancouver Park Board, City of Vancouver  
o. 604 257 8436 / f. 604 257 8427  
Email: [Sev.Araujo@vancouver.ca](mailto:Sev.Araujo@vancouver.ca)

**From:** Wilton, Shauna  
**Sent:** Thursday, February 08, 2018 8:42 AM  
**To:** Araujo, Sev  
**Cc:** Silva, Octavio; Mack, Tiina; Nayeri, Ali; Harper, Margo  
**Subject:** RE: Memo to Board re Harbour Green Dock

Hi Sev,

Good memo! I made a few small changes for readability.

Couple of questions:

- s.13(1)
- Is “Pleasure Craft Only” a specific classification and that’s why it’s capitalized? I changed it in one place but not another. **Its the wording currently on our dock signage and capitalized, but can do lower case**
- Timing: do you think you can run public consultation and come back with a recommendation to the board by June? Q2 seems aggressive. **Sorry that was a typo Q3**

I agree with the run of next steps below with clarifications:

- s.13(1)
- 
- 

Thanks,  
Shauna

**From:** Araujo, Sev  
**Sent:** Tuesday, February 06, 2018 6:51 PM  
**To:** Wilton, Shauna  
**Cc:** Silva, Octavio; Mack, Tiina; Nayeri, Ali; Harper, Margo  
**Subject:** Memo to Board re Harbour Green Dock

Hi Shauna,

Attached is a Draft Memo to Board for your review. I have touched base with Tiina and Ali re content

Once you are ok, and ultimately Malcolm, I see the following happening:

- 1) Memo to Board
- 2) Work with Margo on messaging
- 3) Work with Bowen Island Taxi to relocate off dock (max 2 weeks)
- 4) Secure dock
- 5) Install signage on dock
- 6) Work on recommendations to Board while at the same time confirming scope of work and pricing for potential change of use.

Please let me know

**Sev Araujo**  
**Manager, Commercial Operations**  
Vancouver Park Board, City of Vancouver  
o. 604 257 8436 / f. 604 257 8427  
Email: [Sev.Araujo@vancouver.ca](mailto:Sev.Araujo@vancouver.ca)



From: "Wilton, Shauna" <Shauna.Wilton@vancouver.ca>

To: "Araujo, Sev" <Sev.Araujo@vancouver.ca>

Date: 2/8/2018 9:41:40 AM


Subject: RE: Memo to Board re Harbour Green Dock

Attachments: Memo to Board Harbour Green February 6 2018 Draft - sw.docx

Hi Sev,

Good memo! I made a few small changes for readability.

Couple of questions:

- s.13(1)  

- Is "Pleasure Craft Only" a specific classification and that's why it's capitalized? I changed it in one place but not another.
- Timing: do you think you can run public consultation and come back with a recommendation to the board by June? Q2 seems aggressive.

I agree with the run of next steps below with clarifications:

- s.13(1)  

- 
- 

Thanks,  
Shauna

---

**From:** Araujo, Sev  
**Sent:** Tuesday, February 06, 2018 6:51 PM  
**To:** Wilton, Shauna  
**Cc:** Silva, Octavio; Mack, Tiina; Nayeri, Ali; Harper, Margo  
**Subject:** Memo to Board re Harbour Green Dock

Hi Shauna,

Attached is a Draft Memo to Board for your review. I have touched base with Tiina and Ali re content

Once you are ok, and ultimately Malcolm, I see the following happening:

- 1) Memo to Board
- 2) Work with Margo on messaging
- 3) Work with Bowen Island Taxi to relocate off dock (max 2 weeks)
- 4) Secure dock
- 5) Install signage on dock
- 6) Work on recommendations to Board while at the same time confirming scope of work and pricing for potential change of use.

Please let me know

**Sev Araujo**  
**Manager, Commercial Operations**  
Vancouver Park Board, City of Vancouver  
o. 604 257 8436 / f. 604 257 8427  
Email: [Sev.Araujo@vancouver.ca](mailto:Sev.Araujo@vancouver.ca)











From: ["Harper, Margo" <Margo.Harper@vancouver.ca>](mailto:Margo.Harper@vancouver.ca)  
To: ["Wilton, Shauna" <Shauna.Wilton@vancouver.ca>](mailto:Shauna.Wilton@vancouver.ca)  
["Araujo, Sev" <Sev.Araujo@vancouver.ca>](mailto:Sev.Araujo@vancouver.ca)

Date: 2/8/2018 5:01:47 PM  
Subject: RE: Memo to Board re Harbour Green Dock

<https://bowentaxi.com/pages/sea-taxi>

Just a heads up that this company is still advertising service to Coal Harbour on their website this week. Do they have another dock?

---

**From:** Wilton, Shauna  
**Sent:** Thursday, February 08, 2018 8:42 AM  
**To:** Araujo, Sev  
**Cc:** Silva, Octavio; Mack, Tiina; Nayeri, Ali; Harper, Margo  
**Subject:** RE: Memo to Board re Harbour Green Dock

Hi Sev,

Good memo! I made a few small changes for readability.

Couple of questions:

- [s.13\(1\)](#)
- Is "Pleasure Craft Only" a specific classification and that's why it's capitalized? I changed it in one place but not another.
- Timing: do you think you can run public consultation and come back with a recommendation to the board by June? Q2 seems aggressive.

I agree with the run of next steps below with clarifications:

- [s.13\(1\)](#)

Thanks,  
Shauna

---

**From:** Araujo, Sev  
**Sent:** Tuesday, February 06, 2018 6:51 PM  
**To:** Wilton, Shauna  
**Cc:** Silva, Octavio; Mack, Tiina; Nayeri, Ali; Harper, Margo  
**Subject:** Memo to Board re Harbour Green Dock

Hi Shauna,

Attached is a Draft Memo to Board for your review. I have touched base with Tiina and Ali re content

Once you are ok, and ultimately Malcolm, I see the following happening:

- 1) Memo to Board
- 2) Work with Margo on messaging
- 3) Work with Bowen Island Taxi to relocate off dock (max 2 weeks)
- 4) Secure dock
- 5) Install signage on dock
- 6) Work on recommendations to Board while at the same time confirming scope of work and pricing for potential change of use.

Please let me know

**Sev Araujo**  
**Manager, Commercial Operations**  
Vancouver Park Board, City of Vancouver  
o. 604 257 8436 / f. 604 257 8427  
Email: [Sev.Araujo@vancouver.ca](mailto:Sev.Araujo@vancouver.ca)

From: "Araujo, Sev" <Sev.Araujo@vancouver.ca>  
To: "Mack, Tiina" <tiina.mack@vancouver.ca>  
"Wojnarski, Daria" <Daria.Wojnarski@vancouver.ca>  
Date: 2/9/2018 5:21:34 PM  
Subject: RE: Messaging re: closure of Harbour Green Dock

Thank you Daria,

My comments in [Redish](#)

**Sev Araujo**  
**Manager, Commercial Operations**  
Vancouver Park Board, City of Vancouver  
o. 604 257 8436 / f. 604 257 8427  
Email: [Sev.Araujo@vancouver.ca](mailto:Sev.Araujo@vancouver.ca)

---

**From:** Mack, Tiina  
**Sent:** Friday, February 09, 2018 4:05 PM  
**To:** Wojnarski, Daria; Araujo, Sev  
**Cc:** Nayeri, Ali  
**Subject:** RE: Messaging re: closure of Harbour Green Dock

Hi Daria,

[s.13\(1\)](#)

Thank you for the quick turn around!

Tiina

---

**From:** Wojnarski, Daria  
**Sent:** Friday, February 09, 2018 3:39 PM  
**To:** Araujo, Sev; Mack, Tiina  
**Cc:** Nayeri, Ali  
**Subject:** Messaging re: closure of Harbour Green Dock

Sev and Tiina,

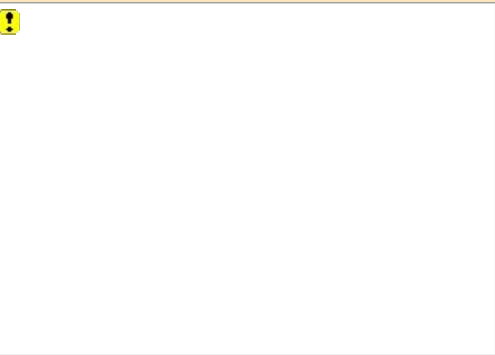
I’ve drafted the following messaging around the closure of Harbour Green Dock.

Please review and change as necessary. I can then share it with the GM Office and anyone who asks on social media.

[s.13\(1\)](#)

Vancouver Park Board

**Daria Wojnarski | Communications**  
Vancouver Park Board | 2099 Beach Avenue  
t. 604.257.8440  
[daria.wojnarski@vancouver.ca](mailto:daria.wojnarski@vancouver.ca)





From: ["Nayeri, Ali" <Ali.Nayeri@vancouver.ca>](mailto:Ali.Nayeri@vancouver.ca)  
To: ["Araujo, Sev" <sev.araujo@vancouver.ca>](mailto:sev.araujo@vancouver.ca)  
["Wojnarski, Daria" <Daria.Wojnarski@vancouver.ca>](mailto:Daria.Wojnarski@vancouver.ca)  
Date: 2/13/2018 2:20:11 PM  
Subject: RE: Messaging re Dock Closure

Hi Sev and Daria,  
Erin told me earlier today that Port of Vancouver has been getting inquiries about the closure as well.  
Thanks,  
Ali

---

**From:** Araujo, Sev  
**Sent:** Tuesday, February 13, 2018 12:46 PM  
**To:** Wojnarski, Daria  
**Cc:** Harper, Margo; Wilton, Shauna; Sangalang, Ellen; Mack, Tiina; Nayeri, Ali  
**Subject:** Messaging re Dock Closure

Daria,

Can you forward the Final official messaging that was finalized on Friday re dock closure so that PBGMO and I can forward when we receive inquiries

Thank you

**Sev Araujo**  
**Manager, Commercial Operations**  
Vancouver Park Board, City of Vancouver  
o. 604 257 8436 / f. 604 257 8427  
Email: [Sev.Araujo@vancouver.ca](mailto:Sev.Araujo@vancouver.ca)



From: "Gerald Sieben" s.22(1)  
To: "Bromley, Malcolm" <Malcolm.Bromley@vancouver.ca>  
Date: 5/8/2018 1:38:33 PM  
Subject: Re: Please Repair Harbour Green Public Dock

Thank you for the prompt response, Malcolm. Our community looks forward to the timely repair and reopening of this iconic dock as it is a key a component in the CHODP and our neighbourhood.

Boaters and seawall users enjoy it extensively during non winter months. Perhaps tie up configurations could be modified to preclude larger vessels. I think some city and provincial officials may have been complicit in allowing special permissions for occasional use by heavy vessels.

Perhaps a small verticalized floating break water or barricaded roped off area with floats may help dissuade inappropriate use by larger vessels and would help with destructive rolling waves from the passing of deep draft ships and storms.

Gerry

On May 8, 2018, at 1:06 PM, Bromley, Malcolm <Malcolm.Bromley@vancouver.ca> wrote:

Thanks Gerry. The dock was never designed for commercial heavy vessel use. This resulted in the damage. There is obviously a need for transit from Bowen Island but our mandate is recreational use.

We are trying to resolve the situation and find appropriate ways to support all needs. We intend on consulting with you and your Association to map out the best path forward. I appreciate your group's longstanding commitment to the neighbourhood and waterfront.

Malcolm Bromley  
General Manager - Vancouver Park Board

On May 8, 2018, at 12:33 PM, Gerald Sieben s.22(1) wrote:

Dear Mr. Araujo

On Saturday My wife and I attended the Jane's walk of Coal Harbour that was led by former CofV co-chief planner Larry Beasley. As we walked along, Larry Beasley reviewed how each aspect of the Coal Harbour Official Development Plan (CHODP) came to realization. Truly the achievements of the master plan for the neighbourhood with its businesses, residences, views and beautiful parks and water access are something that our city is rightly proud of. When we reached the Harbour Green dock, Larry discovered the large padlock and closure sign. He was clearly emotionally upset and said as much.

Coal Harbour residents, pleasure boat operators, office workers, tourists and many Vancouverites use this iconic dock extensively as an extension of the sea wall especially in Spring, Summer and Fall. The dock is an important part of the CHODP as it invites walkers and boaters to intimately access the actual land water interface of Coal Harbour. The dock is the highlight of Harbour Green Park. It should also be noted that the dock is also one of the few small vessel water access points in the downtown in the event of the necessity for emergency evacuation. I note that even though the dock is closed it still needed to be used on an emergency basis for small boats in distress. I photographed one such event at the now closed dock today.



I should mention that I head the Community Relations and Park Advocacy Committee of the Coal Harbour Residents Association. Over the years the CHRA has been heavily involved with all aspects of improving the quality of life in our community. We have worked cooperatively with the City and Vancouver Board of Parks and Recreation on many issues including sea wall and traffic safety, green spaces preservation and mitigating impacts of major projects.

Recently on behalf of the CHRA, I have made several calls to the C of V and to my dismay I learned that the Harbour Green Public Dock will continue to be closed for repairs and that the closure will be extensive. I was told that heavy commercial users of the docks had caused damage. I see that several “angle iron” securing brackets are bent and several pilings require repair.

Over the years members of our committee have informed the “Park Board” of the unauthorized use by large vessels. We had initially been told that the warranty and integrity of the dock required limitation to smaller vessels. On most occasions the larger vessels were required to move. But on several occasions we were told by C of V and Park Board officials that special short time use permissions for heavy vessels have been granted for special events at the convention centre. Once our CHRA president was told by a city official that there was no problem with accommodating larger vessels (we knew that was not correct... I taken have photos of these kinds of occasional misuses as well as photos of proper uses of this popular facility by small vessels and seawall and Park users).

<image1.jpeg>

Common Event: Small Vessels Appropriately Use Popular HG Dock

<image1.jpeg>

Example of fairly rare event: occasional large vessel at HG Public Dock ...some commercial boats said they were given permission for Convention Centre event? Larger vessels are an obvious concern.

<image1.jpeg>

Example of rare event: large new tug on display at HG Public Dock during convention centre trade show.

While the inappropriate occasional use of Harbour Green Public Dock by large vessels is a concern, as a Coal Harbour resident who lives near the dock and who has witnessed some recent winter storm and wave events, I would conjecture that these storms were contributory.

Is the the “Park Board” able to inform the CHRA and the general public that this popular dock will be repaired in a timely way? It has been closed to the public since last February. The CHRA appreciates the hard work of the Vancouver Park Board to maintain our amazing parks. Please let us know if we can be of assistance in helping to expedite the repairs to this popular facility in Harbour Green Park which Jim Lowden referred to as “Vancouver’s front yard that welcomes all British Columbians and the world”. It would be wonderful if these repairs could be completed by Canada Day.

Gerald Sieben  
Chair Community Relations and Parks Advocacy Committee





From: ["Matt Tobias" <matt@floatingstructures.com>](mailto:matt@floatingstructures.com)  
To: ["Nayeri, Ali" <Ali.Nayeri@vancouver.ca>](mailto:Ali.Nayeri@vancouver.ca)  
Date: 11/30/2017 11:19:30 AM  
Subject: RE: Repairs to Harbour Green Dock

Hello Ali,

As discussed we can arrange to meet next Wednesday December 6, 1:00pm @ Harbour Green dock. Let's confirm Tuesday.

Regards,

Mathias Tobias  
Senior Project Manager



**IMFS International Marine Floatation Systems Inc.**

9365 River Road, Delta, BC, Canada V4G 1B4  
Tel (604)930-9903, (Ext. 2) Cell: 604-908-6889  
[Website](#) | [Instagram](#) | [Linkedin](#) | [Facebook](#) | [Pinterest](#)

#### CONFIDENTIALITY NOTICE

This communication is intended for the exclusive use of the addressee identified above.  
Its content is confidential and may contain privileged information.  
If you have received this communication by error, please notify the sender and delete the message without copying or disclosing.

---

**From:** Nayeri, Ali [mailto:[Ali.Nayeri@vancouver.ca](mailto:Ali.Nayeri@vancouver.ca)]  
**Sent:** November-29-17 3:46 PM  
**To:** IMFS  
**Subject:** Repairs to Harbour Green Dock

Hi Peter,

I believe IMFS had manufactured the floats for the [Harbour Green Dock](#). Earlier this year, we completed an assessment of the dock and noted many deficiencies. There are extensive damage to the pile rings on at least three of the floats (pictures of the state of two of the pile rings P6 and P9, attached). In addition, many of the rubrails and UHMW pads have been damaged or are missing.

We are looking to see what are our options in terms of repairing the structure and making it more resilient to future damage. I would be thankful if you could let me know who to contact to discuss how to go about performing the necessary repairs.

Best regards,  
Ali

**Ali Nayeri | Park Development | Board of Parks & Recreation**  
2099 Beach Avenue, Vancouver, BC V6G 1Z4  
Tel: 604-257-8461 | Cell: 604-353-1896  
Email: [ali.nayeri@vancouver.ca](mailto:ali.nayeri@vancouver.ca)

From: ["Matt Tobias" <matt@floatingstructures.com>](mailto:matt@floatingstructures.com)  
To: ["Nayeri, Ali" <Ali.Nayeri@vancouver.ca>](mailto:Ali.Nayeri@vancouver.ca)  
Date: 1/17/2018 12:40:03 PM  
Subject: RE: Repairs to Harbour Green Dock

Ali,

We are working on something, apologize everyone is just very busy.

Regards,

Mathias Tobias  
Senior Project Manager



**IMFS International Marine Floatation Systems Inc.**

9365 River Road, Delta, BC, Canada V4G 1B4  
Tel (604)930-9903, (Ext. 2) Cell: 604-908-6889  
[Website](#) | [Instagram](#) | [Linkedin](#) | [Facebook](#) | [Pinterest](#)

#### CONFIDENTIALITY NOTICE

This communication is intended for the exclusive use of the addressee identified above.  
Its content is confidential and may contain privileged information.  
If you have received this communication by error, please notify the sender and delete the message without copying or disclosing.

---

**From:** Nayeri, Ali [<mailto:Ali.Nayeri@vancouver.ca>]  
**Sent:** January-12-18 4:13 PM  
**To:** Matt Tobias  
**Subject:** RE: Repairs to Harbour Green Dock

Hi Matt,

Happy New Year. I hope you had a wonderful Christmas and a restful break.

I wanted to thank you for meeting me on site before the break. I also wanted to get an update on the status of the budget. As we discussed, it would be great to have two sets of numbers:

1. for immediate repairs / stabilization to prevent further damage and potential loss of floats; and
2. for more comprehensive upgrades that would address unique wave conditions at the site and build some resilience into the system to withstand battering and abuse by large vessels. As mentioned, we would like to reduce the maintenance requirements as much as possible.

Many thanks,  
Ali

---

**From:** Matt Tobias [<mailto:matt@floatingstructures.com>]  
**Sent:** Wednesday, December 13, 2017 3:28 PM  
**To:** Nayeri, Ali  
**Subject:** RE: Repairs to Harbour Green Dock

Ali,

We are going to meet with one of our marine contractors next Tuesday 19<sup>th</sup>, on this project. After we meet with them we will be able to come up with some budget numbers for remedial work to be done.

Regards,



Mathias Tobias  
Senior Project Manager



**IMFS International Marine Floatation Systems Inc.**

9365 River Road, Delta, BC, Canada V4G 1B4  
Tel (604)930-9903, (Ext. 2) Cell: 604-908-6889  
[Website](#) | [Instagram](#) | [Linkedin](#) | [Facebook](#) | [Pinterest](#)

## CONFIDENTIALITY NOTICE

This communication is intended for the exclusive use of the addressee identified above.  
Its content is confidential and may contain privileged information.  
If you have received this communication by error, please notify the sender and delete the message without copying or disclosing.

---

**From:** Nayeri, Ali [<mailto:Ali.Nayeri@vancouver.ca>]  
**Sent:** November-29-17 3:46 PM  
**To:** IMFS  
**Subject:** Repairs to Harbour Green Dock

Hi Peter,

I believe IMFS had manufactured the floats for the [Harbour Green Dock](#). Earlier this year, we completed an assessment of the dock and noted many deficiencies. There are extensive damage to the pile rings on at least three of the floats (pictures of the state of two of the pile rings P6 and P9, attached). In addition, many of the rubrails and UHMW pads have been damaged or are missing.

We are looking to see what are our options in terms of repairing the structure and making it more resilient to future damage. I would be thankful if you could let me know who to contact to discuss how to go about performing the necessary repairs.

Best regards,  
Ali

**Ali Nayeri | Park Development | Board of Parks & Recreation**  
2099 Beach Avenue, Vancouver, BC V6G 1Z4  
Tel: 604-257-8461 | Cell: 604-353-1896  
Email: [ali.nayeri@vancouver.ca](mailto:ali.nayeri@vancouver.ca)

From: "Nayeri, Ali" <Ali.Nayeri@vancouver.ca>  
To: [imfs@floatingstructures.com](mailto:imfs@floatingstructures.com)  
Date: 11/29/2017 4:45:49 PM  
Subject: Repairs to Harbour Green Dock

Hi Peter,

I believe IMFS had manufactured the floats for the [Harbour Green Dock](#). Earlier this year, we completed an assessment of the dock and noted many deficiencies. There are extensive damage to the pile rings on at least three of the floats (pictures of the state of two of the pile rings P6 and P9, attached). In addition, many of the rubrails and UHMW pads have been damaged or are missing.

We are looking to see what are our options in terms of repairing the structure and making it more resilient to future damage. I would be thankful if you could let me know who to contact to discuss how to go about performing the necessary repairs.

Best regards,  
Ali

Ali Nayeri | Park Development | Board of Parks & Recreation  
2099 Beach Avenue, Vancouver, BC V6G 1Z4  
Tel: 604-257-8461 | Cell: 604-353-1896  
Email: [ali.nayeri@vancouver.ca](mailto:ali.nayeri@vancouver.ca)













From: ["Nayeri, Ali" <Ali.Nayeri@vancouver.ca>](mailto:Ali.Nayeri@vancouver.ca)

To: ["Nayeri, Ali" <Ali.Nayeri@vancouver.ca>](mailto:Ali.Nayeri@vancouver.ca)

Date: 2/10/2018 12:25:36 PM

Subject: Tweet by The Vancouver Sun on Twitter



The Vancouver Sun ([@VancouverSun](https://twitter.com/VancouverSun))

[2018-02-09, 8:19 PM](#)

Bowen Island water taxi abruptly ends service to dismay of daily commuters [ebx.sh/2skS2cj](https://ebx.sh/2skS2cj)  
[pic.twitter.com/ASOXdcc2it](https://pic.twitter.com/ASOXdcc2it)

[Download](#) the Twitter app

Regards,  
Ali



From: ["Park Board GM's Office" <pbgmo@vancouver.ca>](mailto:pbgmo@vancouver.ca)

To: ["PB Commissioners" <PBCommissioners@vancouver.ca>](mailto:PBCommissioners@vancouver.ca)

Date: 11/3/2017 1:52:44 PM

Subject: Water Taxi/Ferry Service at Harbour Green Dock (Coal Harbour Marina) - Board Update

Attachments: PB - GMO - Water Taxi-Ferry Service at Harbour Green Dock - Update - Board Briefing Memo - 2017-11-03.pdf

Dear Commissioners,

Further to my August 29/17 email, and the initial briefing memo provided on August 11/17, following is an update on the two commercial commuter and tour services that, as a result of a public complaint received this past summer, were discovered operating from the Harbour Green Dock in Coal Harbour.

Pacific Ferries offered two scheduled daily commuter departures (Monday to Friday), between Harbour Green Park and Gibsons. They also offered daily tours from May 15 - September 15. In August, they agreed to suspend services effective September 15, 2017, and committed to provide the Park Board with a business proposal for review and consideration for the 2018 season. A proposal was received on October 17, 2017, and is currently being reviewed.

Bowen Land and Sea Taxi commuter service from Harbour Green Dock to Snug Cove on Bowen Island consists of two (2) daily drop-offs and two (2) daily departures (Monday to Friday), with weekend service from Granville Island. Given the impacts to commuters, they were given an extension to October 31, 2017, to either prepare and submit a business proposal or find a commercial dock to operate their business. On October 25, 2017, a proposal was received. Given the impacts to Bowen Island commuters, a further extension has been granted to allow time for this proposal to be properly processed. Staff met with the owner of the operation on November 2 and have informed him that permission to continue operating has been granted until January 31, 2018.

Staff will be reviewing the viability of ongoing commercial services operating from the Harbour Green Dock, which is currently restricted to leisure craft only. Once the review is complete, recommendations will be presented to the Board for consideration. In the interim should you have any questions, please feel free to contact me.

Regards,

Shauna Wilton

Deputy General Manager - Vancouver Board of Parks and Recreation

---

**From:** Wilton, Shauna

**Sent:** Tuesday, August 29, 2017 5:10 PM

**To:** PB Commissioners

**Cc:** Bromley, Malcolm; Park Board GM's Office; Araujo, Sev

**Subject:** RE: Bowen Island Water Taxi drop-off/pick up at Coal Harbour: UPDATE

Dear Commissioners:

This note is to provide you a quick update on this situation as it continues to evolve. In consultation with our Legal and Risk Management departments, we will be extending the deadline for operations off the Harbour Green Park dock until October 31, 2017 if the following conditions are met by the operator:

- (1) provide the Park Board with a copy of a valid insurance policy stating that both the City and the Park Board are additional named insureds under their insurance policy; and



(2) apply for a business license to operate within the City of Vancouver

The revised deadline is to provide the operator additional time to submit a business proposal to the Board for consideration and/or secure an alternate location. We are still awaiting agreement from the operator to these terms.

In addition to our recent Park Bridges and Marine Structures inspection report, our marine consultant inspected the dock last week and identified repairs that will be undertaken over this next week to accommodate commercial vessel operations on a short term basis. Should long term commercial operations be considered off the Harbour Green Park dock, capital improvements are currently being identified to accommodate the potential commercial use. We will continue to work with all interested marine operators and present recommendations to the Board as opportunities present themselves.

Staff will be responding to the emails of concern we've received from the public tomorrow.

Please let me know if you have any questions or concerns.

Regards,  
Shauna

---

**From:** Park Board GM's Office

**Sent:** August 11, 2017 2:08 PM

**To:** PB Commissioners

**Cc:** PB - SMT (Senior Management Team) - DL; Silva, Octavio; Araujo, Sev; PB Communications

**Subject:** Water Taxi/Ferry Service at Harbour Green Dock (Coal Harbour Marina) - Board Briefing Memo

Dear Commissioners,

On June 28, 2017, we received a complaint from a member of the public questioning why the Park Board was allowing commercial activity on the Harbour Green Dock when posted signage states "No Commercial Vessels Permitted, Transient Pleasure Craft Only".

As a result, staff discovered the following commercial activity off the Harbour Green Dock:

- 1) [Pacific Ferries](#) offers two (2) schedule daily departures (Monday thru Friday) and daily tours from May 15 - September 15.
- 2) [Bowen Land and Sea Taxi](#) offers three (3) daily drop offs and three (3) daily departures from the Harbour Green Dock, with weekend service from Granville Island.

Neither operator has an active agreement with the Park Board to operate their business from the dock, nor a business licence to operate within the City of Vancouver. As such, both operators were contacted and were advised how their current operations conflict with Park Board by-laws and have resulted in the review of potential liability issues.

Staff recommended the operators submit a business proposal to the Park Board, and until that time, asked the operators to identify a reasonable timeline for when they would be able to temporarily cease their commercial operations off the Harbour Green dock. Additionally, staff are consulting with Risk Management and Legal to determine if there are any interim measures the operators could put in place to address potential liability issues, in order to support continued provision of their water taxi/ferry commuter services at this location until a more formal proposal can be brought to the Board for consideration.

For your reference, the Board has previously considered using the Harbour Green dock for commuter services. In December 2009, the [Park Board approved a 12-month trial period for Coastal Link Ferries](#) (now known as Pacific Ferries) to operate a commuter passenger ferry service between Bowen Island and the Harbour Green dock. At that time, the fee charged was \$500/month for a total of \$6,000. As noted in the staff report, the Park Board was also in discussions with another operator to offer a similar service from the dock, but were waiting to receive a formal proposal. At the conclusion of the trial period in 2011, the



operator did not renew the agreement. In recent discussions with Pacific Ferries they admitted that they have been operating from the dock for the last three (3) years without approval.

It should also be noted that our recent Park Bridges and Marine Structures inspection report has identified \$150K in required maintenance and capital investment in the Harbour Green Dock. In 2005, City of Vancouver entered into an agreement with False Creek Ferries and Aqua Bus to operate a water taxi service within False Creek from seven (7) public docks. Each operator pays an annual fee of \$41,900 to help cover maintenance and capital expenditures associated with the docks. The Aquatic Center and Stamps Landing docks are owned and managed by the City of Vancouver, but under the jurisdiction of the Park Board. As a result of the master agreement, the Park Board's global budget was increased by \$8,000 annually.

We will continue to work with both operators to address short-term and long-term issues. In the interim, please feel free to contact me directly should you have any questions on this matter.

Regards,

Malcolm Bromley  
General Manager - Vancouver Board of Parks and Recreation



VANCOUVER  
BOARD OF  
PARKS AND  
RECREATION

November 3, 2017

MEMO TO : Park Board Commissioners

FROM : Shauna Wilton  
Deputy General Manager, Vancouver Board of Parks and Recreation

SUBJECT : **Water Taxi/Ferry Service at Harbour Green Dock (Coal Harbour Marina)**

---

Dear Commissioners,

Further to my August 29/17 email, and the initial briefing memo provided on August 11/17, following is an update on the two commercial commuter and tour services that, as a result of a public complaint received this past summer, were discovered operating from the Harbour Green Dock in Coal Harbour.

Pacific Ferries offered two scheduled daily commuter departures (Monday to Friday), between Harbour Green Park and Gibsons. They also offered daily tours from May 15 - September 15. In August, they agreed to suspend services effective September 15, 2017, and committed to provide the Park Board with a business proposal for review and consideration for the 2018 season. A proposal was received on October 17, 2017, and is currently being reviewed.

Bowen Land and Sea Taxi commuter service from Harbour Green Dock to Snug Cove on Bowen Island consists of two (2) daily drop-offs and two (2) daily departures (Monday to Friday), with weekend service from Granville Island. Given the impacts to commuters, they were given an extension to October 31, 2017, to either prepare and submit a business proposal or find a commercial dock to operate their business. On October 25, 2017, a proposal was received. Given the impacts to Bowen Island commuters, a further extension has been granted to allow time for this proposal to be properly processed. Staff met with the owner of the operation on November 2 and have informed him that permission to continue operating has been granted until January 31, 2018.

Staff will be reviewing the viability of ongoing commercial services operating from the Harbour Green Dock, which is currently restricted to leisure craft only. Once the review is complete, recommendations will be presented to the Board for consideration. In the interim should you have any questions, please feel free to contact me.

Regards,

A handwritten signature in cursive script, reading "Shauna Wilton".

Shauna Wilton  
Deputy General Manager - Vancouver Board of Parks and Recreation

/sa/clc

Copy: PB Senior Management  
PB Commercial Operations  
PB Business Services  
PB Communications



From:	<a href="mailto:SAPPMWrkRq@vancouver.ca">SAPPMWrkRq@vancouver.ca</a>
To:	"Nayeri, Ali" < <a href="mailto:Ali.Nayeri@vancouver.ca">Ali.Nayeri@vancouver.ca</a> >
Date:	2/9/2018 6:42:56 PM
Subject:	Work Request Form confirmation submission

# Work Request Form

Thank you for submitting your work request.  
You will be notified when this request is received by the Work Control Centre.  
If you have any questions, please contact the Work Control Centre at 604-665-3456.

## Summary of your request:

Requested by:	City Employee
Name:	Ali Nayeri
Phone:	604.257.8461
Email:	<a href="mailto:ali.nayeri@vancouver.ca">ali.nayeri@vancouver.ca</a>
Department:	Park Development
Location:	Harbour Green Dock: Fencing must be erected on the water side of the dock (opposite the piles) to prevent access to the dock.
Subject:	Fencing off Harbour Green Dock
Description:	Harbour Green Dock needs to be closed for a while for repairs. We need to erect fencing (wood or chainlink) along the water side of the float to prevent boaters from getting onto the dock. The fencing needs to be securely attached to the floats. Sign shop will be producing signage to notify public & boaters.

Details to follow in email.

Project WBS CPP-00051-PB

From:	<a href="mailto:SAPPMWrkRq@vancouver.ca">SAPPMWrkRq@vancouver.ca</a>
To:	"Nayeri, Ali" < <a href="mailto:Ali.Nayeri@vancouver.ca">Ali.Nayeri@vancouver.ca</a> >
Date:	2/9/2018 6:32:58 PM
Subject:	Work Request Form confirmation submission

# Work Request Form

Thank you for submitting your work request.  
You will be notified when this request is received by the Work Control Centre.  
If you have any questions, please contact the Work Control Centre at 604-665-3456.

## Summary of your request:

Requested by:	City Employee
Name:	Ali Nayeri
Phone:	604.257.8461
Email:	<a href="mailto:ali.nayeri@vancouver.ca">ali.nayeri@vancouver.ca</a>
Department:	Park Development
Location:	The signs would be posted at both gates leading on to the dock as well as on fencing on the water side. A location map to follow in separate email.
Subject:	Closure Signs at Harbour Green Dock
Description:	Harbour Green Dock needs to be closed for a while for repairs. We will be erecting some fencing on the dock to prevent boaters from accessing the dock. We will need signage mounted on the gangway gates and on the fencing to indicate that the dock is closed for repairs.
	Details to follow in email.
	Project WBS CPP-00051-PB



From:	<a href="mailto:SAPPMWrkRq@vancouver.ca">SAPPMWrkRq@vancouver.ca</a>
To:	"Nayeri, Ali" < <a href="mailto:Ali.Nayeri@vancouver.ca">Ali.Nayeri@vancouver.ca</a> >
Date:	3/2/2018 3:43:40 PM
Subject:	Work Request Form confirmation submission

# Work Request Form

Thank you for submitting your work request.  
You will be notified when this request is received by the Work Control Centre.  
If you have any questions, please contact the Work Control Centre at 604-665-3456.

## Summary of your request:

Requested by:	City Employee
Name:	Ali Nayeri
Phone:	604.257.8461
Email:	<a href="mailto:ali.nayeri@vancouver.ca">ali.nayeri@vancouver.ca</a>
Department:	Park Board - Park Development
Location:	The signs would be posted in the middle of the fencing on the water side. A location map to follow in separate email.
Subject:	Additional Sign at Harbour Green Dock
Description:	We've received a request for one additional sign to be installed at Harbour Green Dock. The sign provide direction to alternative facilities. We would like the sign to be visible to boaters so we would like to mount it in the middle of the fence on the dock next to the existing "Dock Closed" sign.
	Details to follow in email.
	Project WBS CPP-00051-PB