

From: "Johnston, Sadhu" <Sadhu.Johnston@vancouver.ca>

To: "Direct to Mayor and Council - DL"

CC: "City Manager's Correspondence Group - DL"

Date: 2/27/2019 7:21:03 PM

Subject: Nanaimo St sewer separation - traffic concerns and mitigation efforts

Attachments: Nanaimo St -Shortcutting Plan - 2019-02-25 - ZA.PDF

ENG - PDB - Nanaimo St - Construction - Eton to Cambridge TMP - Final -pdf

Greetings Mayor and Council

I am responding to requests from multiple Councillors regarding traffic issues related to Construction on Nanaimo St.

Nanaimo street upgrades work are underway, with the active construction currently taking place between Eaton and Cambridge streets. In anticipation of this work, staff prepared plans in place to minimize the impacts to the adjacent neighborhoods during construction. A number of measures have been implemented with the intent of limiting shortcutting through the residential neighborhoods; discouraging speeding, and optimizing traffic movements in the area. The measures include but are not limited to the implementation of approved traffic control plans to ensure public and worker's safety; addition of traffic control personnel to support safe pedestrian and vehicle movements, installation of project and traffic control materials and signage, and selective traffic enforcement by the Vancouver Police Department.

Given complex nature of the work and associated traffic impacts, staff strategically address the challenges of multiple competing areas, while minimizing the unwanted consequences. Staff are monitoring field conditions on an ongoing basis, and are responding to any stakeholder concerns identified.

Here's the summary of our activity and plans for the construction on Nanaimo.

- The City implemented traffic control plan in accordance with Ministry of Transportation and Infrastructure requirements to ensure public and worker's safety
- In addition to implementing traffic control plan, additional measures are being put in place to limit shortcutting, discourage speeding, and optimize traffic movements in the area including:
 - o Installation of local traffic only signage at McGill, Eaton, Cambridge, Oxford, and Triumph
 - o Various VPD traffic enforcement requests for Triumph, Kamloops, and Dundas
 - o Installation of barriers at strategic locations such as Eaton street, to reduce congestion and encourage safe vehicle turn movements
- Changeable messaging boards and static advisory signs have been employed on arterial roadways including McGill, Dundas, and Hastings to communicate which areas are being impacted by the construction
- Temporary bus stop and parking modifications were implemented to retain transit service in the area, and minimize impacts to traffic movements
- Traffic Control Persons are deployed in the construction area to direct traffic and support safe pedestrian movements
- Staff continue to respond to concerns and plan as required based on immediate impacts and anticipated construction progress. These include specific coordination and communications with:
 - o Tillicum Annex Elementary
 - o Kiwassa Neighborhood House
 - o CMBC
 - o Port Metro Vancouver
 - o BCTA, and
 - o General Public
- Staff continue to work strategically to address the challenges of multiple competing interests, while minimizing the unwanted consequence on others.

See attached plan of measures to protect the neighbourhood and the TMP that is currently in place. Tomorrow our staff will be letting the public know about these mitigation measures.

Best

Sadhu

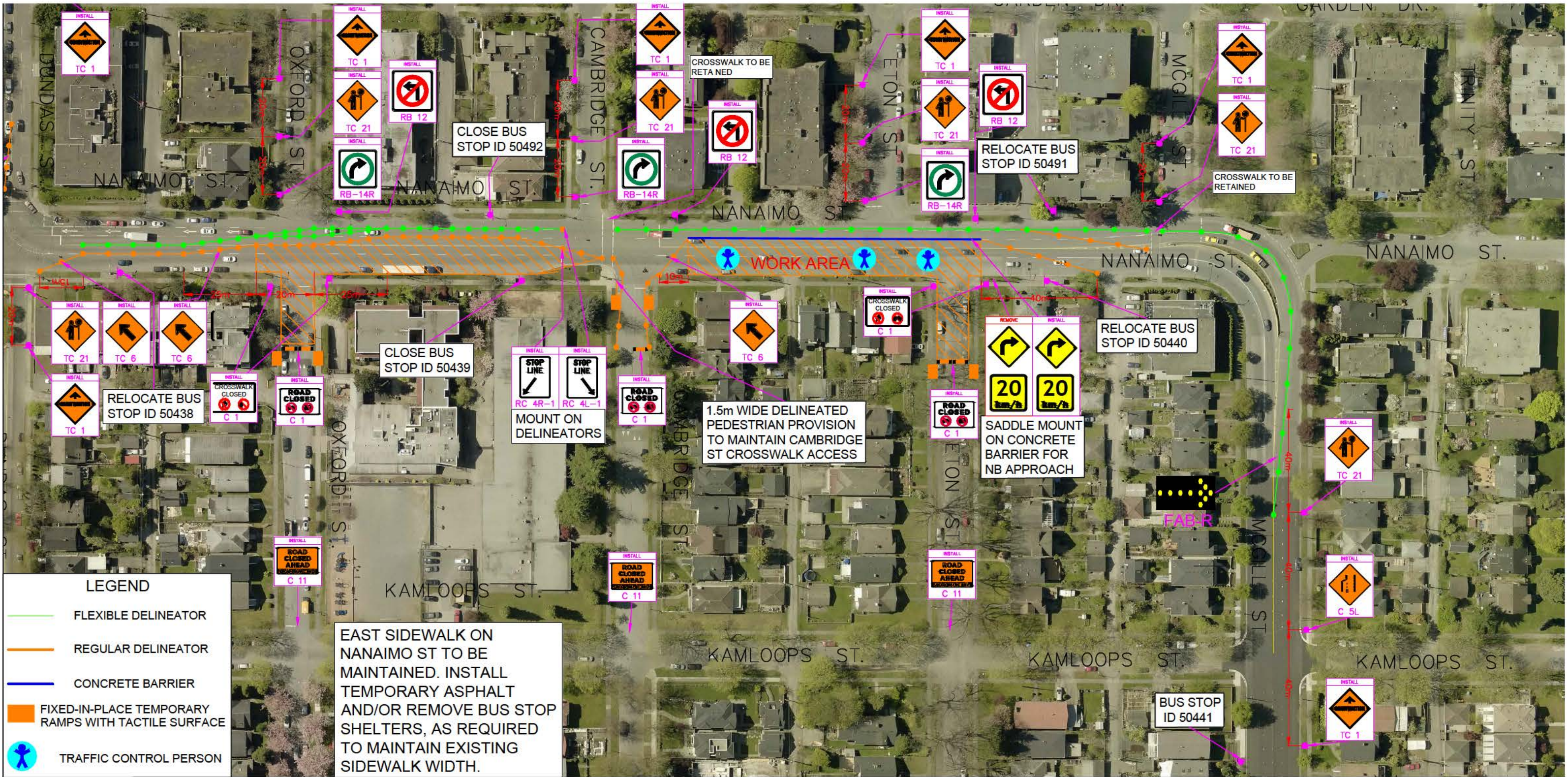
Sadhu Aufochs Johnston | City Manager
Office of the City Manager | City of Vancouver
sadhu.johnston@vancouver.ca
604.873.7627



The City of Vancouver acknowledges that it is situated on the unceded traditional territories of the Musqueam, Squamish, and Tsleil-Waututh peoples.



Green Lines indicate streets where we have requested specific VPD enforcement (speed, stop sign running, etc). We received public complaints on these streets regarding speeding/shortcutting.



SIGN CODE INVENTORY							
TC 1 x 11	TC 21 x 8	TC 6 x 4	FAB-L x 1	FAB-R x 1	CROSSWALK CLOSED x 4	C 15 x 2	RC 4L-1 x 1
RB 12 x 3	RB-14R x 3	C 1 x 2	C 11 x 3	C RS x 1	BARRICADES x 5	RC 4R-1 x 1	

ENGINEERING SERVICES
TRANSPORTATION DIVISION
WORK REQUEST
SEAL NOT REQUIRED

00

2019-01-30

REV

DATE

DWG VANDOC#

I.F.C.

STATUS

SP

ENG NEER OF RECORD

ZA

DESIGNER

JP

DRAFTER

CHECKER (S)

NANAIMO STREET PROJECT
SEWER REPLACEMENT BETWEEN
ETON STREET & CAMBRIDGE STREET

BIKE FAC LIT ES
YES ☐ NO ☒

REFERENCES

BUS ROUTE
YES ☒ NO ☐

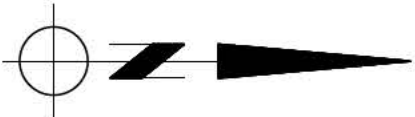
TRUCK ROUTE
YES ☒ NO ☐

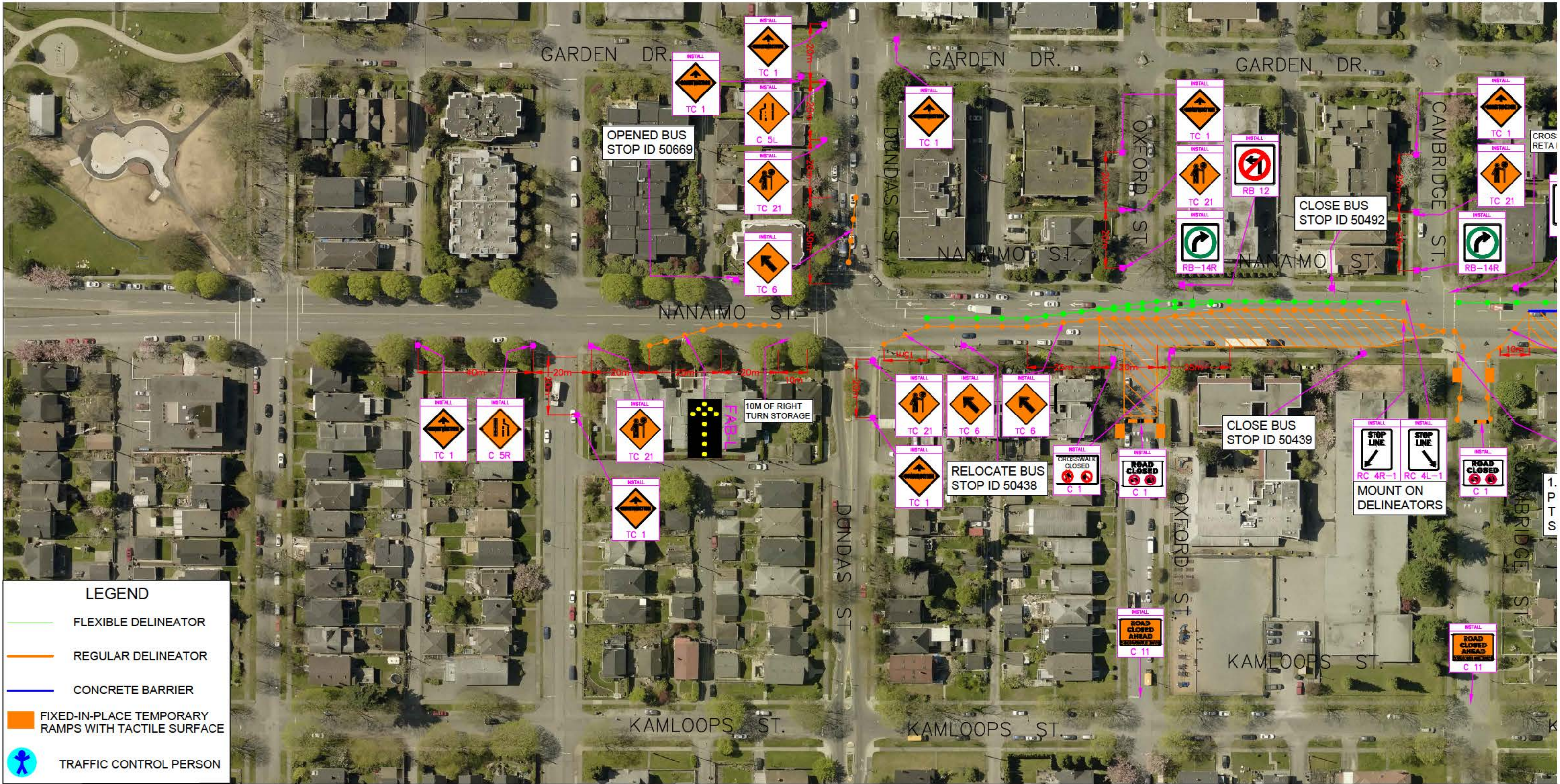
RA LWAY CROSS NG
YES ☐ NO ☒

SCALE
NTS

SHEET SET
1 OF 2

FORM 1 / W.R. VANDOC#





SIGN CODE INVENTORY							
TC 1 x 11	TC 21 x 8	TC 6 x 4	FAB-L x 1	FAB-R x 1	CUSTOM SIGN x 4	C 15 x 2	RC 4L-1 x 1
RB 12 x 3	RB-14R x 3	C 1 x 2	C 11 x 3	C R5 x 1	BARRICADES x 5	RC 4R-1 x 1	



ENGINEERING SERVICES
TRANSPORTATION DIVISION
WORK REQUEST
SEAL NOT REQUIRED

NANAIMO STREET PROJECT
SEWER REPLACEMENT BETWEEN
ETON STREET & CAMBRIDGE STREET

00	2019-01-30		I.F.C.	SP	ZA	JP	
REV	DATE	DWG VANDOC#	STATUS	ENGINEER OF RECORD	DESIGNER	DRAFTER	CHECKER(S)
B KE FACILITIES YES <input type="checkbox"/> NO <input checked="" type="checkbox"/>				BUS ROUTE YES <input checked="" type="checkbox"/> NO <input type="checkbox"/>		TRUCK ROUTE YES <input checked="" type="checkbox"/> NO <input type="checkbox"/>	
REFERENCES					SCALE NTS	SHEET SET 2 OF 2	RAILWAY CROSSING YES <input type="checkbox"/> NO <input checked="" type="checkbox"/>
						FORM 1 / W.R. VANDOC#	