

File No.: 04-1000-20-2021-288

October 25, 2021

s.22(1)

Dear s.22(1)

Re: **Request for Access to Records under the Freedom of Information and Protection of Privacy Act (the "Act")**

I am responding to your request dated April 9, 2021 under the ***Freedom of Information and Protection of Privacy Act, (the Act)***, for:

Record of the "Proud Youth" art installation proposal for False Creek South, specifically: proposal to the city and any other documents included or attached to the application.

All responsive records are attached. Some information in the records has been severed, (blacked out), under s.22(1) of the Act. You can read or download this section here: http://www.bclaws.ca/EPLibraries/bclaws_new/document/ID/freeside/96165_00.

Under section 52 of the Act, and within 30 business days of receipt of this letter, you may ask the Information & Privacy Commissioner to review any matter related to the City's response to your FOI request by writing to: Office of the Information & Privacy Commissioner, info@oipc.bc.ca or by phoning 250-387-5629.

If you request a review, please provide the Commissioner's office with: 1) the request number (#04-1000-20-2021-199); 2) a copy of this letter; 3) a copy of your original request; and 4) detailed reasons why you are seeking the review.

Yours truly,

Cobi Falconer, FOI Case Manager, for

[Signature on file]

Barbara J. Van Fraassen, BA
Director, Access to Information & Privacy

Barbara.vanfraassen@vancouver.ca
453 W. 12th Avenue Vancouver BC V5Y 1V4

*If you have any questions, please email us at foi@vancouver.ca and we will respond to you as soon as possible. Or you can call the FOI Case Manager at 604.871.6584.

Encl.

:kt

Public Art Proposal

Vancouver Biennale

Chen Wenling - The Proud Youth



Approximate Location

Exact location will be determined and shown on a site plan after feedback from relevant parties is received



Vancouver Biennale
Chen Wenling
THE PROUD YOUTH, 2020

Operations Plan

PRIMARY CONTACT

Sammi Wei: 604 682 1289 (Office Hours) or s.22(1) (24/7 Emergency)

INSTALLERS & DE-INSTALLERS

The Vancouver Biennale contracts Belton Direct Rigging & Industrial Services Ltd. for installations and de-installations.

MAINTENANCE

The Vancouver Biennale inspects all outdoor installations monthly, and members of the public may direct inquiries to info@vancouverbiennale.com or telephone 604 682 1289.

Weather and Environment

As this sculpture will exist outdoors, particular care is given to ensure all parts survive weathering.

Rain: sculpture and all parts are waterproof and rustproof

Snow and ice: the sculpture's organic form discourages accumulation

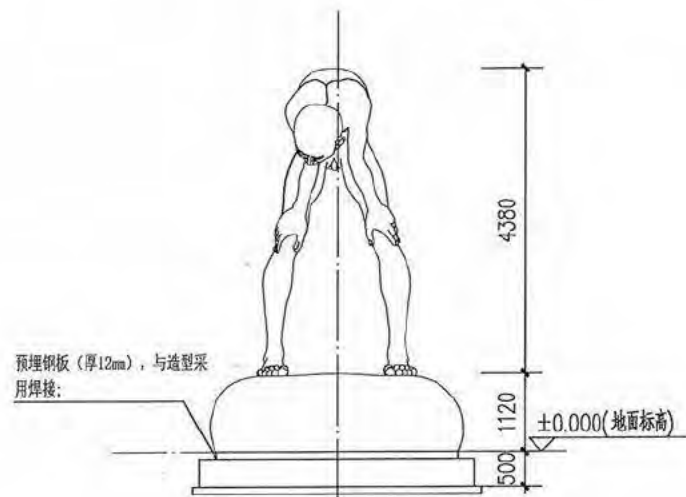
Surface Cleaning

Annual low-pressured pressure washing will remove built-up grime, droppings, water streaks, etc. Additional washing will be scheduled, if necessary, for droppings accumulated on the sculpture and surrounding areas.

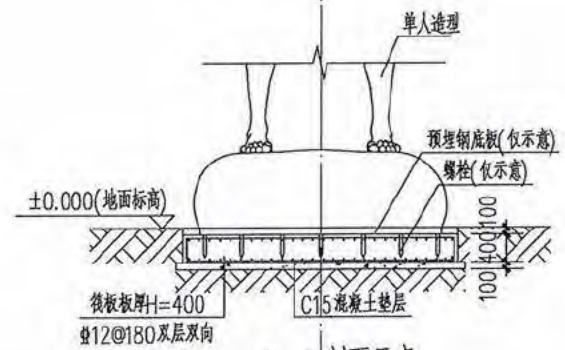
Graffiti, scratches, and serious grime build-up will be hand-cleaned using soft cloth and water as needed, and then polished to finish. City by-laws will be observed to ensure graffiti is removed within 10 days.

Engineer Inspection

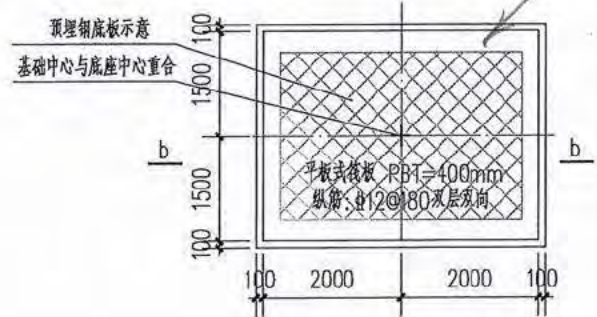
Annual inspection of connections will be conducted by All-Span Engineering.



单人造型立面图



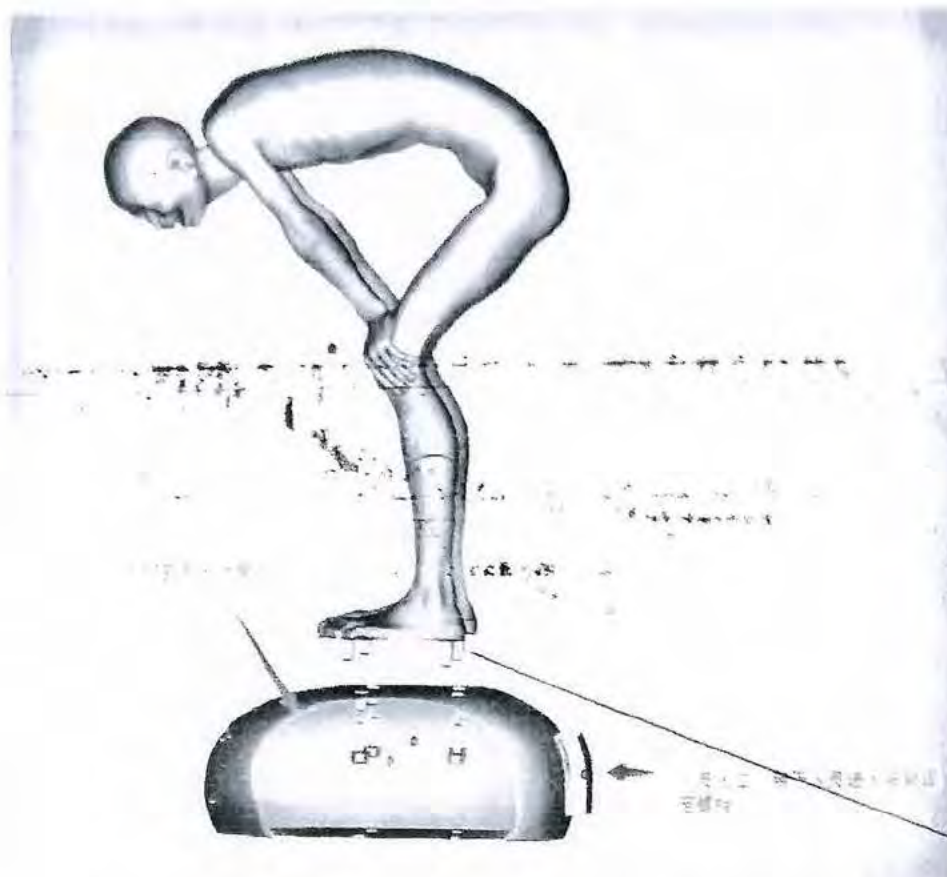
b-b 剖面示意



单人造型基础详图

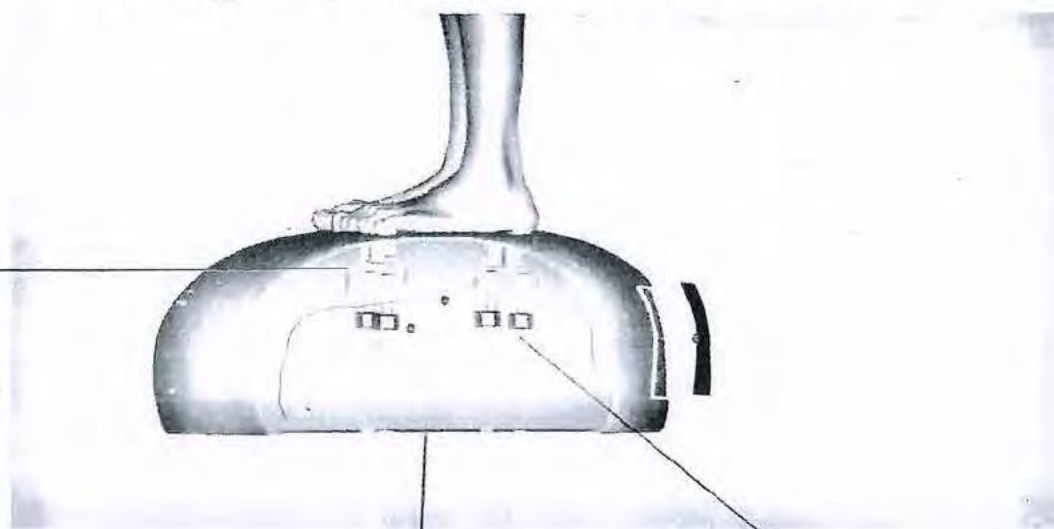
For Footing see DWG 204

单人造型图



4 pegs welded approx.

3. Align sculpture to bolts. Enter via the door illustrated.



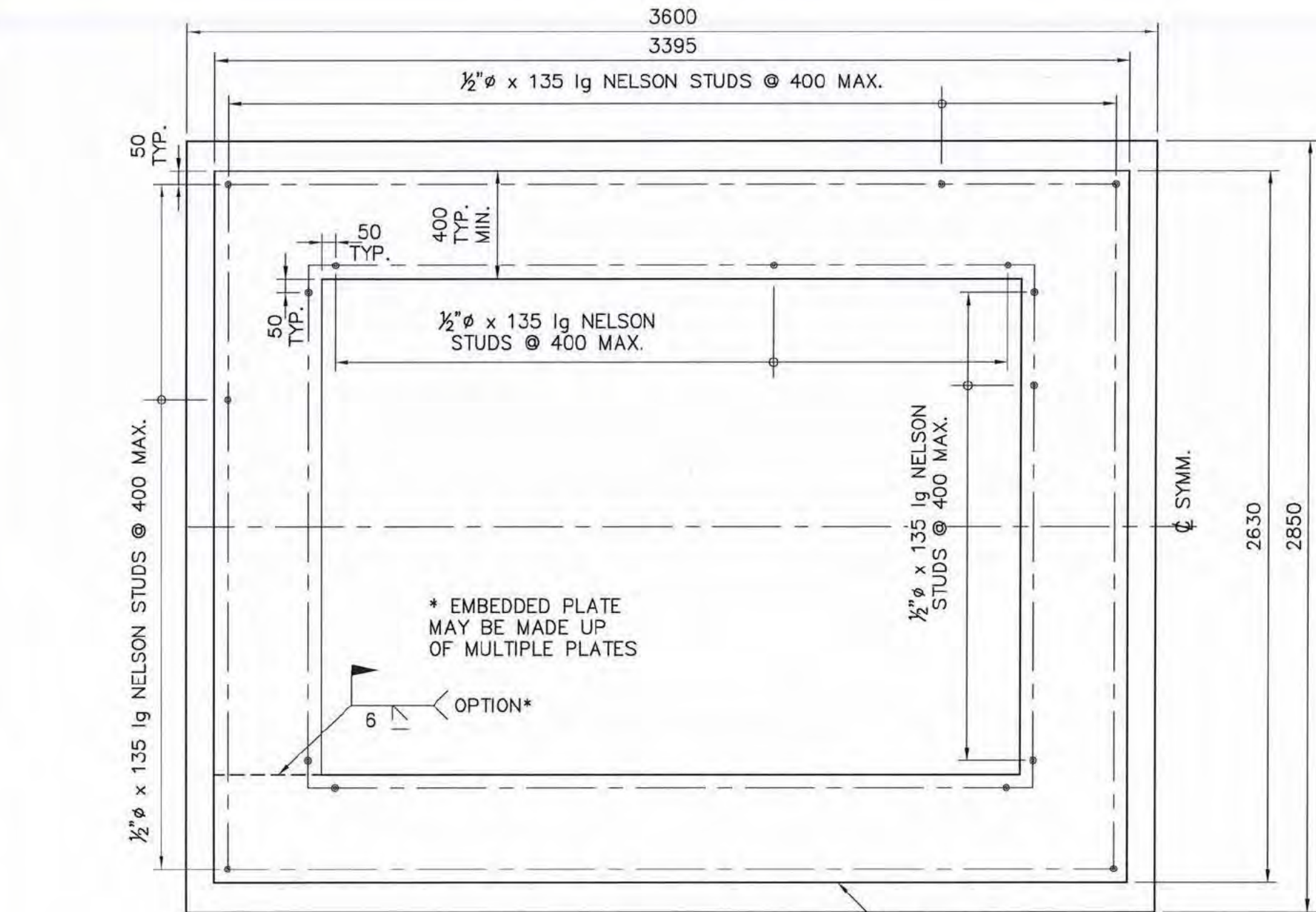
500mm length
x 35-40mm
diameter
(see photos)

Layout can only be estimated
(see "parts diagram" file)

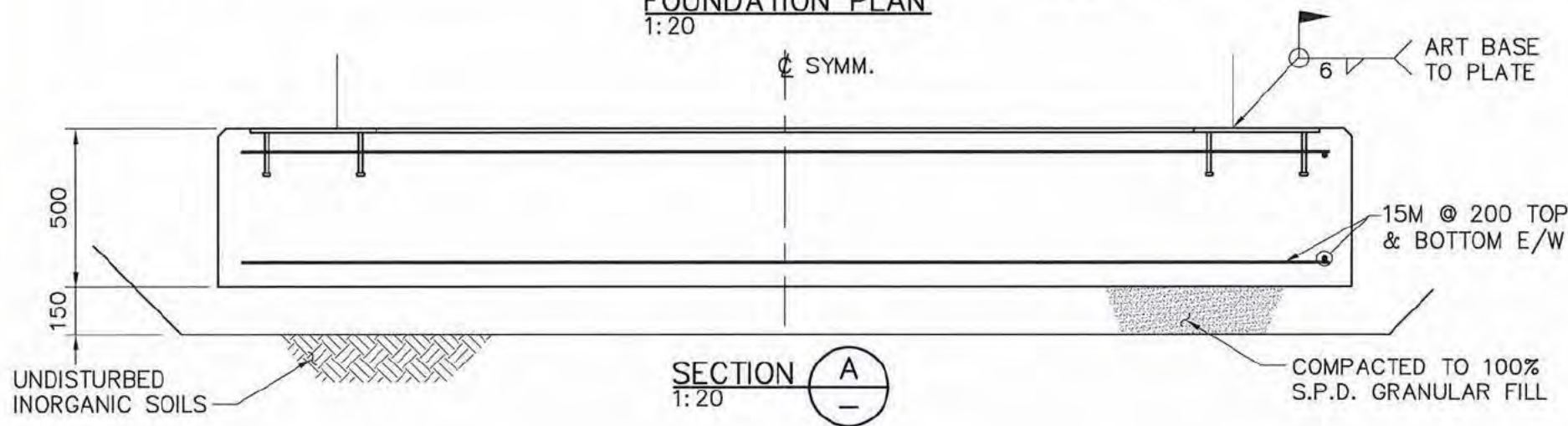
4. Secure sculpture and then tighten bolts.

Diameter Length
M30mm x 100mm
x 4 bolts

Rock base is welded to plate,
and plate is welded to rebar in the concrete pad.
Plate and rebar and Concrete pad



FOUNDATION PLAN
1:20



SECTION A
1:20

NOTES:

1. THE ALLOWABLE SIZE OF HOLE IN THE STEEL PLATE TO BE VERIFIED WITH THE SIZE OF THE SCULPTURE BASE PRIOR TO FABRICATION.
2. FOR YOUTH SCULPTURE AND CONNECTION DETAILS, SEE DRAWING SK-2 AND SK-3



CLIENT VANCOUVER BIENNALE 2018-2020	PROJECT YOUTH SCULPTURE FOUNDATION	DRAWING TITLE FOUNDATION PLAN AND DETAILS	DATE 15/07/20	SCALE AS SHOWN	DRAWN BY R.C.	DESIGN BY D.L.	CHECKED BY D.M.	APPROVED	PROJECT No. 20034	REV.	DRAWING No. 204	B
ISSUED FOR CONSTRUCTION	ISSUED FOR REVIEW	DESCRIPTION	DATE	DATE	DATE	DATE	DATE	DATE	DATE	DATE	DATE	DATE

ALL-SPAN
ENGINEERING & CONSTRUCTION LTD.

#201 - 7198 VANTAGE WAY
DELTA, B.C. V4G 1K7
E-mail: all-span@telus.net

PH: (604) 940-2212 FAX: (604) 940-1516

GENERAL NOTES

A) GENERAL

- 1. THIS STRUCTURE HAS BEEN DESIGNED IN ACCORDANCE WITH CITY OF VANCOUVER BUILDING BY-LAW 2019.
- 2. STRUCTURAL DRAWINGS ARE TO BE READ IN CONJUNCTION WITH OTHER RELATED DRAWINGS FOR DIMENSIONS AND PRESENCE OF OPENINGS, INSERTS, AND MECHANICAL/ELECTRICAL ELEMENTS.
- 3. THE CONTRACTOR IS RESPONSIBLE FOR DIMENSIONS IN THE FIELD TO SUIT EXISTING CONDITIONS. HE SHALL SITE MEASURE AND CONTROL THE PRODUCTION OF WORK ON SITE AND ELSEWHERE TO FULFILL THE INTENT OF THE DRAWINGS, NOTIFY THE ENGINEER OF ANY DIMENSIONAL VARIATION FROM THE PLANS.
- 4. IF DISCREPANCIES RELATING TO STRUCTURAL WORK ARE FOUND IN THE VARIOUS DOCUMENTS, THE MORE STRINGENT PROVISIONS SHALL APPLY, UNLESS APPROVED BY THE ENGINEER. SPECIFICATIONS SHALL CONTROL OVER THESE DRAWINGS AND GENERAL NOTES ONLY WHERE THE SPECIFICATIONS PROVIDE FOR MORE STRINGENT REQUIREMENTS. CONTRACTORS, SUPPLIERS AND SUBTRADES ARE TO ENSURE THAT THEY ARE WORKING WITH THE 'ISSUED FOR CONSTRUCTION' DRAWINGS.
- 5. BRACING OF THE STRUCTURE AND ALL COMPONENTS DURING CONSTRUCTION, INCLUDING ANY UNDERPINNING, SHALL REMAIN THE SOLE RESPONSIBILITY OF THE CONTRACTOR.
- 6. THIS SET OF DRAWINGS SHOWS THE COMPLETED STRUCTURE ONLY. THEY DO NOT INCLUDE COMPONENTS THAT MAY BE NECESSARY FOR CONSTRUCTION SAFETY. THE CONTRACTOR IS RESPONSIBLE FOR SAFETY IN AND ABOUT THE JOB SITE DURING CONSTRUCTION, AND THE DESIGN AND ERECTION OF ALL TEMPORARY STRUCTURES, FORM WORK, FALSE WORK, SHORING, ETC. REQUIRED TO COMPLETE THE WORK.
- 7. ALL-SPAN ENGINEERING WILL REVIEW SHOP DRAWINGS PERTAINING TO WORK SHOWN ON ALL-SPAN DRAWINGS. THE EXTENT OF THIS REVIEW IS AT THE SOLE DISCRETION OF THE ALL-SPAN ENGINEER AND IS FOR THE SOLE PURPOSE OF ASCERTAINING GENERAL CONFORMANCE WITH THE STRUCTURAL DESIGN CONCEPT. THE REVIEW IS NOT AN APPROVAL OF THE DESIGN, DETAILS, AND DIMENSIONS INHERENT IN THE SHOP DRAWINGS, RESPONSIBILITY FOR WHICH SHALL REMAIN WITH THE CONTRACTOR SUBMITTING THEM. SUCH REVIEW SHALL NOT RELIEVE THE CONTRACTOR OF HIS RESPONSIBILITY FOR ERRORS AND OMISSIONS IN THE SHOP DRAWINGS OR FOR MEETING ALL REQUIREMENTS OF THE CONTRACT DOCUMENTS. ALL COMPONENTS SHALL BE ASSEMBLED AND ERECTED IN ACCORDANCE WITH FINAL REVIEWED SHOP AND ERECTION DRAWINGS. NO FABRICATION/ERECTION SHALL PROCEED UNTIL REVIEW HAS BEEN COMPLETED BY THE ENGINEER.
- 8. SHOP DRAWINGS SHALL BE COMPLETE AT THE TIME OF SUBMISSIONS, AND SHALL BEAR THE SEAL OF THE PROFESSIONAL ENGINEER RESPONSIBLE FOR THE WORK.
- 9. DESIGN LOADS: (BY GOLDER ASSOCIATES)

- a) SNOW $S_s=1.8 \text{ kPa}$, $S_r=0.2 \text{ kPa}$
- b) WIND $q \text{ }_{50} = 0.45 \text{ kPa}$, $q \text{ }_{10} = 0.35 \text{ kPa}$
- c) SEISMIC $S_a(0.2) = .79$, $S_a(0.5) = .697$, $S_a(1.0) = .396$, $S_a(2.0) = .242$, $S_a(5.0) = .078$, $S_a(10.0) = .027$, $PGA = .343$

- 10. ALL CODES AND DOCUMENTS REFERRED TO IN THESE GENERAL NOTES ARE TO BE THE LATEST EDITION.
- 11. DO NOT INSTALL OPENINGS, SET INSERTS, DRILL OR ATTACH TO STRUCTURAL MEMBERS WITHOUT AUTHORIZATION FROM STRUCTURAL ENGINEER, EXCEPT AS NOTED ON DRAWINGS.
- 12. DO NOT CONSTRUCT FROM THESE DRAWINGS UNLESS MARKED "ISSUED FOR CONSTRUCTION" BY ALL-SPAN ENGINEERING.
- 13. REVIEW OF THE WORK OR ANY PORTION THEREOF, BY THE ENGINEER SHALL NOT IN ANY WAY RELIEVE THE CONTRACTOR OF HIS RESPONSIBILITY AND OBLIGATION TO COMPLY WITH THE CONTRACT DRAWINGS AND SPECIFICATIONS. NO OMISSION BY THE ENGINEER TO EXERCISE HIS RIGHTS HEREUNDER SHALL IMPOSE LIABILITY ON THE ENGINEER OR OWNER.
- 14. ALL-SPAN ENGINEERING WILL NOT BE RESPONSIBLE FOR THE ACTS OF OMISSIONS OF THE CONTRACTOR, SUB-CONTRACTORS, OR ANY OTHER PERSONS PERFORMING ANY OF THE WORK OR FOR THE FAILURE OF ANY OF THEM TO CARRY OUT THE WORK IN ACCORDANCE WITH CONTRACT DOCUMENTS.

- 15. CONTRACTOR SHALL RECORD AND REPORT ANY VARIATIONS IN EXISTING CONDITIONS WHICH MAY AFFECT THE STRUCTURE.
- 16. THE PERFORMANCE OF ALL TEMPORARY WORKS TO BE CARRIED OUT UNDER THE SUPERVISION OF A STRUCTURAL PROFESSIONAL ENGINEER FAMILIAR WITH THE WORK AND REGISTERED TO PRACTICE IN THE PROVINCE OF BRITISH COLUMBIA.
- 17. CONTRACTORS, SUPPLIERS, SUB-TRADES, ETC. ARE TO ENSURE THEY ARE WORKING ON CURRENT PLANS AND SHOULD VERIFY THAT THEY ARE IN POSSESSION OF LATEST ISSUE. DISCARD OBSOLETE DRAWINGS.
- 18. ALL DIMENSIONS TO TAKE PRECEDENCE OVER SCALE SHOWN ON PLANS, SECTIONS, AND DETAILS.
- 19. THE CONTRACTOR SHALL INFORM THE ENGINEER IN WRITING, DURING THE BIDDING PERIOD, OF ANY DISCREPANCIES OR OMISSIONS NOTED ON THE DRAWINGS OR IN THE SPECIFICATIONS. UPON RECEIPT OF SUCH INFORMATION, THE ENGINEER WILL PROVIDE CORRECTED INSTRUCTIONS. ANY SUCH DISCREPANCY, OMISSION, OR VARIATION NOT REPORTED SHALL BE THE RESPONSIBILITY OF THE CONTRACTOR, AND CORRECTIVE WORK SHALL BE PERFORMED AS DIRECTED BY THE ENGINEER.
- 20. IF SITE CONDITIONS DIFFER FROM THOSE ANTICIPATED OR AS SHOWN ON THE DRAWINGS, THE CONTRACTOR SHALL IMMEDIATELY NOTIFY THE ENGINEER FOR CORRECTIVE OR REMEDIAL WORK. FAILURE TO NOTIFY THE ENGINEER WILL MAKE THE CONTRACTOR RESPONSIBLE FOR ALL CONDITIONS AND COSTS ASSOCIATED.
- 21. THE CONTRACTOR SHALL ENSURE ALL APPROVALS REQUIRED FOR THE PROPOSED WORK HAVE BEEN OBTAINED PRIOR TO COMMENCEMENT OF ANY CONSTRUCTION. THE CONTRACTOR IS TO CHECK WITH B.C. HYDRO AND TERASEN GAS PRIOR TO COMMENCING WORK FOR VERIFICATION OF LOCATIONS AND INVERTS OF ALL GAS MAINS.
- 22. THE CONTRACTOR SHALL USE EXTREME CARE WHEN WORKING NEAR EXISTING SERVICES AND ANY SERVICES DISTURBED ARE TO BE REPLACED TO THE SATISFACTION OF THE CITY OF VANCOUVER OR OTHER APPROVAL AGENCIES.
- 23. ANY MATERIAL SUBSTITUTION MUST BE APPROVED BY THE ENGINEER.
- 24. ALL SURVEY MONUMENTS MUST BE PROTECTED AND ANY DAMAGE TO BE REPAIRED AT THE CONTRACTOR'S EXPENSE.
- 25. ALL EXISTING IMPROVEMENTS TO BE RESTORED TO THE SATISFACTION OF THE CITY OF VANCOUVER. IN SPECIAL CASES THE CITY INSPECTOR MAY REQUIRE WRITTEN ACCEPTANCE BY THE AFFECTED PROPERTY OWNERS FOR RESTORATION WORKS PERFORMED BY THE CONTRACTOR.
- 26. APPROVAL OF NOISE VARIANCE FOR ALL WORK OUTSIDE OF NORMAL WORKING HOURS REQUIRED BY THE CITY OF VANCOUVER.

B) FIELD REVIEW AND TESTING

- 1. ALL-SPAN PROVIDES FIELD REVIEW ONLY FOR THE WORK SHOWN ON THESE STRUCTURAL DRAWINGS. THE REVIEW IS A PERIODIC REVIEW TO ASCERTAIN THAT THE WORK IS IN GENERAL CONFORMANCE WITH THE PLANS PREPARED BY ALL-SPAN ENGINEERING AND CONSTRUCTION LTD. IT REMAINS THE CONTRACTOR'S RESPONSIBILITY TO BUILD THE WORK IN ACCORDANCE WITH THE CONTRACT DOCUMENTS.
- 2. THE CONTRACTOR IS SOLELY RESPONSIBLE TO GIVE THE ENGINEER REASONABLE ADVANCE NOTICE WHEN STRUCTURAL WORK IS READY FOR REVIEW BY THE ENGINEER (MIN 24 HOURS PRIOR TO POUR OR CONCEALMENT). THE CONTRACTOR IS RESPONSIBLE FOR REVIEWING OF HIS OWN WORK AND THE WORK OF HIS SUBTRADES PRIOR TO REVIEW BY THE ENGINEER.



<div>ALL-SPAN</div> <div>ENGINEERING & CONSTRUCTION LTD.</div>		<div>CLIENT</div> <div>VANCOUVER BIENNALE 2018-2020</div>		H		DATE	15/07/20
				G		SCALE	AS SHOWN
				F		DRAWN BY	R.C.
				E		DESIGN BY	D.L.
				D		CHECKED BY	D.M.
				C		APPROVED	
				B	ISSUED FOR CONSTRUCTION	15/07/20	20034 REV.
				A	ISSUED FOR REVIEW	09/07/20	201 B
				REV.	DESCRIPTION	DATE	
				<div>DRAWING TITLE</div> <div>GENERAL NOTES SHEET #1</div>			
<div>#201 - 7198 VANTAGE WAY DELTA, B.C. V4G 1K7 E-mail: all-span@telus.net</div>		<div>PH: (604) 940-2212 FAX: (604) 940-1516</div>					

FOI 2021-286 Page 7 of 30

B) FIELD REVIEW AND TESTING CONT.

3. ALL STRUCTURAL WORK REQUIRES WRITTEN REVIEW BY THE ENGINEER, INCLUDING:
 - a) EXCAVATIONS, BEFORE FORMING
 - b) CONCRETE REINFORCEMENT
 - c) MASONRY REINFORCEMENT (INCLUDING NON-LOAD BEARING PARTITIONS)
 - d) STRUCTURAL STEEL (INCLUDING DECKING)
 - e) WOOD FRAMING (INCLUDING SHEATHING)
4. CHECK AND CONFIRM THAT WORK IS COMPLETED IN ACCORDANCE WITH CONTRACT DOCUMENTS PRIOR TO INSPECTIONS. WORK FOR INSPECTIONS IS TO BE COMPLETED IN REASONABLY SIZED SEGMENTS.
5. MATERIAL TESTING SHALL BE DIRECTED BY THE ENGINEER AT THE EXPENSE OF THE OWNER.
6. CONCRETE TESTING SHALL BE IN ACCORDANCE WITH CAN/CSA A23.2-14 AND CARRIED OUT BY AN INDEPENDENT TESTING AGENCY APPROVED BY THE ENGINEER. UNLESS PERMITTED BY THE ENGINEER, A MINIMUM OF 3 TEST CYLINDERS SHALL BE CAST FOR EACH 50m³/50 Cu.y OR EACH DAY'S POUR, WHICHEVER IS LESS. TEST ONE AT 7 DAYS AND TWO AT 28 DAYS AND SUBMIT WRITTEN REPORTS FOR REVIEW BY THE ENGINEER. TEST REPORTS SHALL IDENTIFY THE LOCATIONS WHERE CONCRETE IS BEING TESTED WITH GRIDLINES AND ELEVATIONS.
7. SUBMIT CONCRETE TEST RESULTS MAX. 24 HOURS AFTER TEST.
8. ADDITIONAL TESTING AND FIELD REVIEW RESULTING FROM REJECTION OF MORE THAN 5% OF WORK WILL BE AT THE CONTRACTOR'S EXPENSE.

C) FOUNDATIONS

1. DESIGN OF FOUNDATIONS IS BASED ON SOILS WITH A SERVICEABILITY LIMIT PRESSURE OF 50 kPa (1044 psf) ALL FOOTINGS SHALL BEAR ON SOIL CAPABLE OF THIS PRESSURE WITHOUT FAILURE OR UNDUE SETTLEMENT. IF SOILS ARE FOUND DURING CONSTRUCTION TO NOT MEET THIS CRITERIA, NOTIFY THE ENGINEER, AND PROVIDE REVISED FOUNDATION TO THE ENGINEER'S SPECIFICATIONS. IN ANY EVENT, FOOTINGS ARE TO BEAR ON FIRM UNDISTURBED MATERIAL. GRASS, ROOTS, ROOT NETWORKS, TOPSOIL, ETC, ARE TO BE REMOVED FROM FOUNDATION AREA.
2. CONTRACTOR SHALL BE RESPONSIBLE FOR ALL TEMPORARY DRAINAGE DURING EXCAVATION.
3. FOOTING ELEVATIONS, IF SHOWN, ARE FOR REFERENCE ONLY AND MUST BE MODIFIED TO SUIT SITE CONDITIONS, BEARING LEVELS, FLOOR SLOPES AND ELEVATIONS, SERVICES, ETC.
4. BEARING SURFACES MUST BE PROTECTED FROM FREEZING BEFORE AND AFTER FOOTINGS ARE POURED.
5. ENGINEERED DESIGNS AND INSPECTIONS OF ANY EXCAVATION, SLOPE STABILITY, DEWATERING AND TEMPORARY SHORING, IF REQUIRED, SHALL BE ARRANGED AND PROVIDED BY THE CONTRACTOR.
6. DESIGN AND INSPECTION OF SITE DRAINAGE IS THE RESPONSIBILITY OF OTHERS.
7. PRODUCTS:
 - a) GRANULAR SLAB BASE AND STRUCTURAL FILL: CLEAN PIT RUN SAND AND GRAVEL WITH LESS THAN 5% PASSING #200 SIEVE AND MAXIMUM 75mm AGGREGATE SIZE.
 - b) FOUNDATION BACKFILL: AS (a) EXCEPT WHERE NOTED OTHERWISE ON DETAILS.
 - c) DRAIN GRAVEL: SCREENED AND WASHED GRAVEL, MAXIMUM 40mm STONE WITH LESS THAN 5% PASSING #4 SIEVE.
8. EXECUTION:
 - a) EXTEND ALL FOUNDATIONS TO FIRM UNDISTURBED INORGANIC NATIVE SUBSOILS OR EXTERIOR GRADE OR TO ELEVATIONS SHOWN ON DRAWINGS, WHICHEVER IS DEEPER.
 - b) REMOVE ALL LOOSE MATERIAL FROM FOOTING EXCAVATION PRIOR TO POURING CONCRETE.
 - c) PROTECT FOOTING FROM FROST DAMAGE, WHERE NECESSARY, UNTIL PERMANENT CONSTRUCTION PROVIDES SUCH PROTECTION.
 - d) COMPACT STRUCTURAL FILL TO 100% STANDARD PROCTOR DENSITY IN MAXIMUM 300mm LIFTS. COMPACT GRANULAR SLAB BASE TO 100% STANDARD PROCTOR DENSITY.
 - e) COMPACT FOUNDATION BACKFILL TO 95% STANDARD PROCTOR DENSITY IN 300mm LIFTS.
9. PROVIDE MINIMUM 150mm LAYER OF FREE DRAINING COMPACTED BACKFILL UNDER SLAB.

D) CONCRETE NOTES

1. a) ALL CONC. SHALL CONFORM TO THE REQUIREMENTS OF CAN/CSA A23.1/A23.2-14. CEMENT SHALL BE TYPE 10 "NORMAL PORTLAND CEMENT" UNLESS OTHERWISE NOTED. NORMAL WEIGHT CONCRETE FOR VARIOUS PURPOSES SHALL BE AS FOLLOWS:

MIX DESIGN:	MIN. 28	MAX.			
DESCRIPTION	DAY COMP.	SIZE OF	SPECIFIED	CLASS OF	% AIR
	STRENGTH	AGGREGATE	SLUMP	EXPOSURE	CONTENT

	MPa (psi)	mm (inch)	mm (inch)		
FOOTING	30 (4300)	40 (1 1/2")	75 (3")	F-2	3-6

- b) SLUMPS LISTED ARE BEFORE THE ADDITION OF SUPER PLASTICIZERS. TOLERANCE IN SPECIFIED SLUMP SHALL BE $\pm 20\text{mm}$ ($3/4"$).
- c) NO CALCIUM CHLORIDE PERMITTED IN ANY FORM IN THE CONCRETE MIXES.
2. PERFORM ALL WORKS IN ACCORDANCE WITH CAN/CSA A23.1/A23.2-14 INCLUDING THE FOLLOWING:
 - a) CONSTRUCTION TOLERANCES
 - b) FABRICATION AND PLACEMENT OF REINFORCING
 - c) PLACEMENT OF CONCRETE, INCLUDING PROPER VIBRATION AND CURING
3. TAKE ALL PRECAUTIONS TO ENSURE EXPOSED CONCRETE ACHIEVES FINISH DESIRED BY THE ENGINEER, INCLUDING PROPER FORMING, MIX DESIGN, SITE CARE AND ADEQUATE VIBRATION. PROTECT AGAINST DAMAGE DURING STRIPPING AND ENTIRE CONSTRUCTION PERIOD.
4. SEE ENGINEERS DRAWINGS FOR SLAB ELEVATIONS, DRAINAGE, SLOPES AND LOCATIONS OF REGLETS, REVEALS AND CHAMFERS.
5. BLOCKOUTS, NAILERS, CONDUITS, DUCTS, PIPES, SLEEVES AND OTHER OPENINGS ARE SUBJECT TO APPROVAL BY THE ENGINEER.
6. FOR CONCRETE IN CONTACT WITH SULFATE TYPE OF SOILS SEE CSA A23.1-14.
7. STRIPPING OF FORMS IS NOT ALLOWED UNTIL CONCRETE STRENGTH HAS REACHED ITS FULL DESIGNED STRENGTH. STRENGTH OF CONCRETE SHALL BE DETERMINED FROM FIELD-CURED CYLINDERS.
8. ALL HOT AND COLD WEATHER CONCRETE WORK SHALL BE CARRIED OUT IN ACCORDANCE WITH CAN/CSA A23.1/A23.2-14.
- a) WHEN TEMPERATURE IS EXPECTED TO FALL BETWEEN 3°C AND -10°C WITHIN 3 DAYS OF POURING CONCRETE, THE CONTRACTOR SHALL CARRY OUT ONE OR MORE OF THE FOLLOWING PROCEDURES:
 - i) MAKE PROVISION TO HEAT MIX WATER OR AGGREGATE TO MAINTAIN A MINIMUM CONCRETE TEMP. OF 10°C .
 - ii) MAKE PROVISIONS TO HEAT THE FORM WORK OR SOIL SURFACE. CONCRETE SHALL NOT BE POURED AGAINST ANY SURFACE WITH A TEMPERATURE LESS THAN 3°C . (CALCIUM CHLORIDE OR OTHER DE-ICING SALTS ARE NOT PERMITTED.)
 - iii) COVER CONCRETE WITH INSULATION BLANKET FOR THE FIRST 36 HOURS AFTER POURING CONCRETE. DO NOT POUR WHEN TEMPERATURE IS EXPECTED TO FALL BELOW -10°C WITHIN 3 DAYS AFTER POURING.
 - iv) MAKE PROVISIONS FOR A HEATED ENCLOSURE TO MAINTAIN THE TEMPERATURE OF ALL CONCRETE SURFACES ABOVE 10°C FOR A MINIMUM OF 3 DAYS AFTER THE POUR.
 - v) PROVIDE ALTERNATE MIX DESIGNS FOR COLD WEATHER.
- b) WHEN THE TEMPERATURE IS EXPECTED TO RISE ABOVE 25°C THE CONTRACTOR SHALL:
 - i) MAKE PROVISIONS TO COOL CONCRETE TO MAINTAIN A MAX. TEMPERATURE OF 30°C .
 - ii) MAKE PROVISION TO PREVENT CONCRETE FROM DRYING.
9. TAKE MEASURE TO MINIMIZE SHRINKAGE CRACKING INCLUDING COVERING AND DAMPENING CONCRETE IN THE CURING STAGE.
10. UNLESS OTHERWISE NOTED, WHERE EXPANSION ANCHORS ARE REQUIRED, USE HILTI KB 3 OR APPROVED EQUAL; WHERE CHEMICAL ANCHORS ARE REQUIRED, USE HILTI HIT HY-200 EPOXY, OR APPROVED EQUAL.
11. THE CONTRACTOR IS RESPONSIBLE FOR THE COMPLETE STRUCTURAL DESIGN AND CONSTRUCTION OF FALSEWORKS IN ACCORDANCE W/ CSA S269.1-16 AND THE FORMWORKS IN ACCORDANCE WITH CAN/CSA 2693-M14.

H			DATE	15/07/20
G			SCALE	AS SHOWN
F			DRAWN BY	R.C.
E			DESIGN BY	D.L.
D			CHECKED BY	D.M.
C			APPROVED	
B	ISSUED FOR CONSTRUCTION	15/07/20	PROJECT No.	20034 REV.
A	ISSUED FOR REVIEW	09/07/20	DRAWING No.	202 B
REV.	DESCRIPTION	DATE		

CLIENT
VANCOUVER BIENNALE
2018-2020

PROJECT
YOUTH SCULPTURE
FOUNDATION

DRAWING TITLE
GENERAL NOTES
SHEET #2

ALL-SPAN

ENGINEERING & CONSTRUCTION LTD.

#201 - 7198 VANTAGE WAY
DELTA, B.C. V4G 1K7
E-mail: all-span@telus.net

PH: (604) 940-2212 FAX: (604) 940-1516

City of Vancouver - FOI 2021-288 Page 8 of 30

From: "Sammi Wei" <sammi@vancouverbiennale.com>
To: "Charleston, Brian" <Brian.Charleston@vancouver.ca>
CC: "Natalia Lebedinskaia" <natalia@vancouverbiennale.com>
"Koltai, Anna \ (old id\)" s.15(1)(l) @vancouver.ca>
Date: 7/20/2020 3:05:39 PM
Subject: [EXT] RE: Chen Wenling - timeline

City of Vancouver security warning: Do not click on links or open attachments unless you were expecting the email and know the content is safe.

Hi Brian,

I just realized I didn't give you a timeline – sorry about that.

In our best hopes we'd like to install this piece in the week of August 4th, which is why we tried to get everything together in one go given our experience with Kambiz. What are your thoughts?

p.s. Anna it was nice meeting you in person on Sunday!

Sammi Wei

Director of Operations | Vancouver Biennale 2018-2020

P: 604.682.1289 Ext. 103 **E:** sammi@vancouverbiennale.com

A: 290 W. 3rd Ave., Vancouver, BC V5Y 1G1

W: www.vancouverbiennale.com [vancouverbiennale.com]

If you like to cycle or walk, sign up for Vancouver Biennale's **BIKEnnale/WALKennale "SIX SUNDAYS THIS SUMMER"**, from July 26 - August 30. Check out vbbike.ca [vbbike.ca] to learn more. A great chance to get outdoors (with appropriate physical distancing) and explore the history, architecture, and culture of a neighbourhood or two!

From: Charleston, Brian <Brian.Charleston@vancouver.ca>
Sent: Friday, July 17, 2020 6:30 AM
To: Sammi Wei <sammi@vancouverbiennale.com>
Cc: Natalia Lebedinskaia <natalia@vancouverbiennale.com>; Koltai, Anna <Anna.Koltai@vancouver.ca>
Subject: RE: Chen Wenling

Hi Sammi,

Thank you for sending these. You can hold off on the site plan. Let us start our review and get back to you.

What timeline are you aiming for on this piece?

Can you please include Anna on all emails? She is helping me with all the artwork until she returns
s.22(1)

Thank you,
Brian

From: Sammi Wei [<mailto:sammi@vancouverbiennale.com>]
Sent: Thursday, July 16, 2020 2:30 PM
To: Charleston, Brian
Cc: Natalia Lebedinskaia
Subject: RE: Chen Wenling

Hi Brian,

Here are the stamped drawings and all the shop drawings.
Please also find the operations plan (incl. maintenance details) attached.

Should I reach out to utilities to get a Site Plan done right away?

Cheers,

Sammi Wei

Director of Operations | Vancouver Biennale 2018-2020

P: 604.682.1289 Ext. 103 **E:** sammi@vancouverbiennale.com
A: 290 W. 3rd Ave., Vancouver, BC V5Y 1G1
W: www.vancouverbiennale.com [vancouverbiennale.com]

If you like to cycle or walk, sign up for Vancouver Biennale's **BIKEnnale/WALKennale "SIX SUNDAYS THIS SUMMER"**, from July 26 - August 30. Check out vbbike.ca [vbbike.ca] to learn more. A great chance to get outdoors (with appropriate physical distancing) and explore the history, architecture, and culture of a neighbourhood or two!

From: Sammi Wei
Sent: Tuesday, July 14, 2020 1:36 PM
To: Natalia Lebedinskaia <natalia@vancouverbiennale.com>; Charleston, Brian <Brian.Charleston@vancouver.ca>
Subject: RE: Chen Wenling

Hi Brian,

Please see attached artwork summary which includes the dimensions, artwork statement, proposed location, and artist CV.

The foundation plan designed by BC-certified engineering firm All Span is also attached.

David Lerer of All Span will finish connections and wind loading detail reviews and sign off within the next couple of days.

I'll finalize the operations and maintenance plans within this week as well; it will be very similar to those of Kambiz's, except that instead of the artist, the Biennale will be the primary contact.

Thanks so much,

Sammi Wei

Director of Operations | Vancouver Biennale 2018-2020

P: 604.682.1289 Ext. 103 **E:** sammi@vancouverbiennale.com

A: 290 W. 3rd Ave., Vancouver, BC V5Y 1G1

W: www.vancouverbiennale.com [vancouverbiennale.com]

If you like to cycle or walk, sign up for Vancouver Biennale's **BIKENnale/WALKennale "SIX SUNDAYS THIS SUMMER"**, from July 26 - August 30. Check out vbbike.ca [vbbike.ca] to learn more. A great chance to get outdoors (with appropriate physical distancing) and explore the history, architecture, and culture of a neighbourhood or two!

From: Natalia Lebedinskaia <natalia@vancouverbiennale.com>

Sent: Tuesday, July 14, 2020 10:57 AM

To: Charleston, Brian <Brian.Charleston@vancouver.ca>

Cc: Sammi Wei <sammi@vancouverbiennale.com>

Subject: Re: Chen Wenling

Hi Brian,

Sammi will send you all the materials today, she has all the finalized engineering foundation drawings ready.

N

Natalia Lebedinskaia

Program Director | Vancouver Biennale

P 604.682.1289, ext 102 **C** **S.22(1)**

E natalia@vancouverbiennale.com

A 290 W. 3rd Ave., Vancouver, BC V5Y 1G1

W www.vancouverbiennale.com [vancouverbiennale.com]

On Jul 14, 2020, 8:02 AM -0700, Charleston, Brian <Brian.Charleston@vancouver.ca>, wrote:

Good Morning Natalia,

Can you please resend me all the documents you have for the Chen Wenling piece?

Thank you,

Brian

From: "Sammi Wei" <sammi@vancouverbiennale.com>
To: "Charleston, Brian" <Brian.Charleston@vancouver.ca>
"Koltai, Anna \ (old id\)" s.15(1)(l) <[s.15\(1\)\(l\)@vancouver.ca](mailto:s.15(1)(l)@vancouver.ca)>
CC: "Natalia Lebedinskaia" <natalia@vancouverbiennale.com>
Date: 7/24/2020 12:19:05 PM
Subject: [EXT] RE: Chen Wenling
Attachments: Site Plan (no utilities).pdf

City of Vancouver security warning: Do not click on links or open attachments unless you were expecting the email and know the content is safe.

Hi Brian & Anna,

Please see attached.

The dotted line marks the "air footprint" of the hunched over red figure, and the solid line is the above-ground base.

Our curatorial vision was for the tip of the head of the red guy to align with the inner lip of the curb (if you're doing a site visit, there's a bike rack there on a concrete pad, and the head of the guy should align with the inner edge of the concrete pad).

The head of the guy (face side, facing the road) is 2m above ground, so the idea is that people can sit /walk/stand underneath it just off of the cycling path.

Let me know if you need more details!

Cheers,

Sammi Wei

Director of Operations | Vancouver Biennale 2018-2020

P: 604.682.1289 Ext. 103 **E:** sammi@vancouverbiennale.com

A: 290 W. 3rd Ave., Vancouver, BC V5Y 1G1

W: www.vancouverbiennale.com [vancouverbiennale.com]

If you like to cycle or walk, sign up for Vancouver Biennale's **BIKENnale/WALKennale "SIX SUNDAYS THIS SUMMER"**, from July 26 - August 30. Check out vbbike.ca [vbbike.ca] to learn more. A great chance to get outdoors (with appropriate physical distancing) and explore the history, architecture, and culture of a neighbourhood or two!

From: Charleston, Brian <Brian.Charleston@vancouver.ca>
Sent: Thursday, July 23, 2020 3:58 PM
To: Koltai, Anna <Anna.Koltai@vancouver.ca>; Sammi Wei <sammi@vancouverbiennale.com>
Cc: Natalia Lebedinskaia <natalia@vancouverbiennale.com>
Subject: Re: Chen Wenling

Hi Anna and Sammi,

Sorry I may have not been very clear. I don't think we need a detailed site plan at this point, but could you draw the footprint of the art piece on an aerial screenshot. It does not need to be exact, but approximate to give our stakeholders reviewing it an idea of how close it is to the bike path, sidewalks or storm sewer.

Thanks,

Brian

From: Koltai, Anna
Sent: Thursday, July 23, 2020 3:46 PM
To: Sammi Wei
Cc: Charleston, Brian; Natalia Lebedinskaia
Subject: RE: Chen Wenling

Hi Sammi,

Sorry for the short notice, but would you be able to put together a site plan for us by tomorrow? We'd like to see the exact location at which the piece is proposed. As always, if you have any questions feel free to let me know.

Thank you,

Anna Koltai | Engineering Assistant II

Engineering - Utilities Management | City of Vancouver

604.871.6645 | anna.koltai@vancouver.ca

From: Sammi Wei <sammi@vancouverbiennale.com>

Sent: Tuesday, July 14, 2020 1:36 PM

To: Natalia Lebedinskaia; Charleston, Brian

Subject: [EXT] RE: Chen Wenling

City of Vancouver security warning: Do not click on links or open attachments unless you were expecting the email and know the content is safe.

Hi Brian,

Please see attached artwork summary which includes the dimensions, artwork statement, proposed location, and artist CV.

The foundation plan designed by BC-certified engineering firm All Span is also attached.

David Lerer of All Span will finish connections and wind loading detail reviews and sign off within the next couple of days.

I'll finalize the operations and maintenance plans within this week as well; it will be very similar to those of Kambiz's, except that instead of the artist, the Biennale will be the primary contact.

Thanks so much,

Sammi Wei

Director of Operations | Vancouver Biennale 2018-2020

P: 604.682.1289 Ext. 103 **E:** sammi@vancouverbiennale.com

A: 290 W. 3rd Ave., Vancouver, BC V5Y 1G1

W: www.vancouverbiennale.com [vancouverbiennale.com]

If you like to cycle or walk, sign up for Vancouver Biennale's **BIKEnnale/WALKennale "SIX SUNDAYS THIS SUMMER"**, from July 26 - August 30. Check out ybbike.ca [ybbike.ca] to learn more. A great chance to get outdoors (with appropriate physical distancing) and explore the history, architecture, and culture of a neighbourhood or two!

From: Natalia Lebedinskaia <natalia@vancouverbiennale.com>
Sent: Tuesday, July 14, 2020 10:57 AM
To: Charleston, Brian <Brian.Charleston@vancouver.ca>
Cc: Sammi Wei <sammi@vancouverbiennale.com>
Subject: Re: Chen Wenling

Hi Brian,
Sammi will send you all the materials today, she has all the finalized engineering foundation drawings ready.
N

Natalia Lebedinskaia
Program Director | Vancouver Biennale
P 604.682.1289, ext 102 **C** **s.22(1)**

E natalia@vancouverbiennale.com

A 290 W. 3rd Ave., Vancouver, BC V5Y 1G1

W www.vancouverbiennale.com [vancouverbiennale.com]

On Jul 14, 2020, 8:02 AM -0700, Charleston, Brian
<Brian.Charleston@vancouver.ca>, wrote:

Good Morning Natalia,

Can you please resend me all the documents you have for the Chen Wenling piece?

Thank you,

Brian



From: ["Sammi Wei" <sammi@vancouverbiennale.com>](mailto:sammi@vancouverbiennale.com)
To: ["Koltai, Anna \(old id\)" s.15\(1\)\(l\) @vancouver.ca](mailto:s.15(1)(l)@vancouver.ca)
CC: ["Charleston, Brian" <Brian.Charleston@vancouver.ca>](mailto:Brian.Charleston@vancouver.ca)
["Natalia Lebedinskaia" <natalia@vancouverbiennale.com>](mailto:natalia@vancouverbiennale.com)
Date: 7/31/2020 2:26:59 PM
Subject: RE: Chen Wenling - response to city comments and initial installation plan
Attachments: Installation Plan.pdf
Vancouver Biennale - The Proud Youth - Stakeholder Review Comments.xlsx

Hi Anna & Brian,

I'm still waiting to hear back from the engineer on two of these questions (see red), but most of it is all set.

We are happy to adjust the plan and place the artwork at the recommended Option 1, aligning it at an optimal distance from the pedestrian path.

Let me know if you have further comments and your thoughts on the responses.

Have a great weekend!

Sammi Wei

Director of Operations | Vancouver Biennale 2018-2020

P: 604.682.1289 Ext. 103 **E:** sammi@vancouverbiennale.com

A: 290 W. 3rd Ave., Vancouver, BC V5Y 1G1

W: www.vancouverbiennale.com [vancouverbiennale.com]

If you like to cycle or walk, sign up for Vancouver Biennale's **BIKENnale/WALKennale "SIX SUNDAYS THIS SUMMER"**, from July 26 - August 30. Check out vbbike.ca [vbbike.ca] to learn more. A great chance to get outdoors (with appropriate physical distancing) and explore the history, architecture, and culture of a neighbourhood or two!

From: Koltai, Anna <Anna.Koltai@vancouver.ca>
Sent: Friday, July 31, 2020 10:39 AM
To: Sammi Wei <sammi@vancouverbiennale.com>
Cc: Charleston, Brian <Brian.Charleston@vancouver.ca>; Natalia Lebedinskaia <natalia@vancouverbiennale.com>
Subject: RE: Chen Wenling

Good morning Sammi,

Please see the attached comments from our internal stakeholder review. We are still waiting for a

few groups to give us their comments, so there may be more on the way in the future.

If you have any questions, please feel free to reach out for clarification.

Thank you,

Anna Koltai | Engineering Assistant II
Engineering - Utilities Management | City of Vancouver
604.871.6645 | anna.koltai@vancouver.ca



From: Sammi Wei [<mailto:sammi@vancouverbiennale.com>]
Sent: Friday, July 24, 2020 2:29 PM
To: Koltai, Anna
Cc: Charleston, Brian; Natalia Lebedinskaia
Subject: [EXT] RE: Chen Wenling

City of Vancouver security warning: Do not click on links or open attachments unless you were expecting the email and know the content is safe.

Hi Anna, no problem, thanks for letting us know.
We can certainly move it back.

What's next? ☐

Sammi Wei

Director of Operations | Vancouver Biennale 2018-2020

P: 604.682.1289 Ext. 103 **E:** sammi@vancouverbiennale.com
A: 290 W. 3rd Ave., Vancouver, BC V5Y 1G1
W: www.vancouverbiennale.com [vancouverbiennale.com]

If you like to cycle or walk, sign up for Vancouver Biennale's **BIKEnnale/WALKEnnale "SIX SUNDAYS THIS SUMMER"**, from July 26 - August 30. Check out ybbike.ca [ybbike.ca] to learn more. A great chance to get outdoors (with appropriate physical distancing) and explore the history, architecture, and culture of a neighbourhood or two!

From: Koltai, Anna <Anna.Koltai@vancouver.ca>
Sent: Friday, July 24, 2020 2:18 PM
To: Sammi Wei <sammi@vancouverbiennale.com>
Cc: Charleston, Brian <Brian.Charleston@vancouver.ca>; Natalia Lebedinskaia <natalia@vancouverbiennale.com>

Subject: RE: Chen Wenling

Hi Sammi,

Thank you for getting this to us so quickly! I've overlaid the area you've given us onto a map showing City utilities and we have some concerns regarding the proposed location. The current location is going to be very close to the sewer line and will probably be rejected by their team during our internal review. Another concern that might arise with its current location is the proximity to the bike path. Although the piece won't be directly impacting the bike path, there's still a chance that Transportation will reject the proposed location due to its close proximity.

Would you be open to moving the piece back about 1-1.5m from its current proposed location? This will give us the required horizontal clearance from the storm sewer as well as help reduce the risk of rejection from Transportation.

Thank you,

Anna Koltai | Engineering Assistant II
Engineering - Utilities Management | City of Vancouver
604.871.6645 | anna.koltai@vancouver.ca



From: Sammi Wei [<mailto:sammi@vancouverbiennale.com>]
Sent: Friday, July 24, 2020 12:19 PM
To: Charleston, Brian; Koltai, Anna
Cc: Natalia Lebedinskaia
Subject: RE: Chen Wenling

Hi Brian & Anna,

Please see attached.

The dotted line marks the air footprint of the hunched over red figure, and the solid line is the above-ground base.

Our curatorial vision was for the tip of the head of the red guy to align with the inner lip of the curb (if you're doing a site visit, there's a bike rack there on a concrete pad, and the head of the guy should align with the inner edge of the concrete pad).

The head of the guy (face side, facing the road) is 2m above ground, so the idea is that people can sit /walk/stand underneath it just off of the cycling path.

Let me know if you need more details!

Cheers,

Sammi Wei

Director of Operations | Vancouver Biennale 2018-2020

P: 604.682.1289 Ext. 103 **E:** sammi@vancouverbiennale.com

A: 290 W. 3rd Ave., Vancouver, BC V5Y 1G1

W: www.vancouverbiennale.com [vancouverbiennale.com]

If you like to cycle or walk, sign up for Vancouver Biennale's **BIKEnnale/WALKennale "SIX SUNDAYS THIS SUMMER"**, from July 26 - August 30. Check out ybbike.ca [ybbike.ca] to learn more. A great chance to get outdoors (with appropriate physical distancing) and explore the history, architecture, and culture of a neighbourhood or two!

From: Charleston, Brian <Brian.Charleston@vancouver.ca>

Sent: Thursday, July 23, 2020 3:58 PM

To: Koltai, Anna <Anna.Koltai@vancouver.ca>; Sammi Wei <sammi@vancouverbiennale.com>

Cc: Natalia Lebedinskaia <natalia@vancouverbiennale.com>

Subject: Re: Chen Wenling

Hi Anna and Sammi,

Sorry I may have not been very clear. I don't think we need a detailed site plan at this point, but could you draw the footprint of the art piece on an aerial screenshot. It does not need to be exact, but approximate to give our stakeholders reviewing it an idea of how close it is to the bike path, sidewalks or storm sewer.

Thanks,

Brian

From: Koltai, Anna

Sent: Thursday, July 23, 2020 3:46 PM

To: Sammi Wei

Cc: Charleston, Brian; Natalia Lebedinskaia

Subject: RE: Chen Wenling

Hi Sammi,

Sorry for the short notice, but would you be able to put together a site plan for us by tomorrow? We'd like to see the exact location at which the piece is proposed. As always, if you have any questions feel free to let me know.

Thank you,

Anna Koltai | Engineering Assistant II

Engineering - Utilities Management | City of Vancouver

604.871.6645 | anna.koltai@vancouver.ca



From: Sammi Wei <sammi@vancouverbiennale.com>

Sent: Tuesday, July 14, 2020 1:36 PM

To: Natalia Lebedinskaia; Charleston, Brian

Subject: [EXT] RE: Chen Wenling

City of Vancouver security warning: Do not click on links or open attachments unless you were expecting the email and know the content is safe.

Hi Brian,

Please see attached artwork summary which includes the dimensions, artwork statement, proposed location, and artist CV.

The foundation plan designed by BC-certified engineering firm All Span is also attached.

David Lerer of All Span will finish connections and wind loading detail reviews and sign off within the next couple of days.

I'll finalize the operations and maintenance plans within this week as well; it will be very similar to those of Kambiz's, except that instead of the artist, the Biennale will be the primary contact.

Thanks so much,

Sammi Wei

Director of Operations | Vancouver Biennale 2018-2020

P: 604.682.1289 Ext. 103 **E:** sammi@vancouverbiennale.com

A: 290 W. 3rd Ave., Vancouver, BC V5Y 1G1

W: www.vancouverbiennale.com [vancouverbiennale.com]

If you like to cycle or walk, sign up for Vancouver Biennale's **BIKENnale/WALKennale "SIX SUNDAYS THIS SUMMER"**, from July 26 - August 30. Check out ybbike.ca [ybbike.ca] to learn more. A great chance to get outdoors (with appropriate physical distancing) and explore the history, architecture, and culture of a neighbourhood or two!

From: Natalia Lebedinskaia <natalia@vancouverbiennale.com>

Sent: Tuesday, July 14, 2020 10:57 AM
To: Charleston, Brian <Brian.Charleston@vancouver.ca>
Cc: Sammi Wei <sammi@vancouverbiennale.com>
Subject: Re: Chen Wenling

Hi Brian,
Sammi will send you all the materials today, she has all the finalized engineering foundation drawings ready.
N

Natalia Lebedinskaia
Program Director | Vancouver Biennale
P 604.682.1289, ext 102 C s.22(1)
E natalia@vancouverbiennale.com
A 290 W. 3rd Ave., Vancouver, BC V5Y 1G1
W www.vancouverbiennale.com [vancouverbiennale.com]

On Jul 14, 2020, 8:02 AM -0700, Charleston, Brian
<Brian.Charleston@vancouver.ca>, wrote:

Good Morning Natalia,

Can you please resend me all the documents you have for the Chen Wenling piece?

Thank you,

Brian

The Proud Youth - Installation Plan

Installation Steps

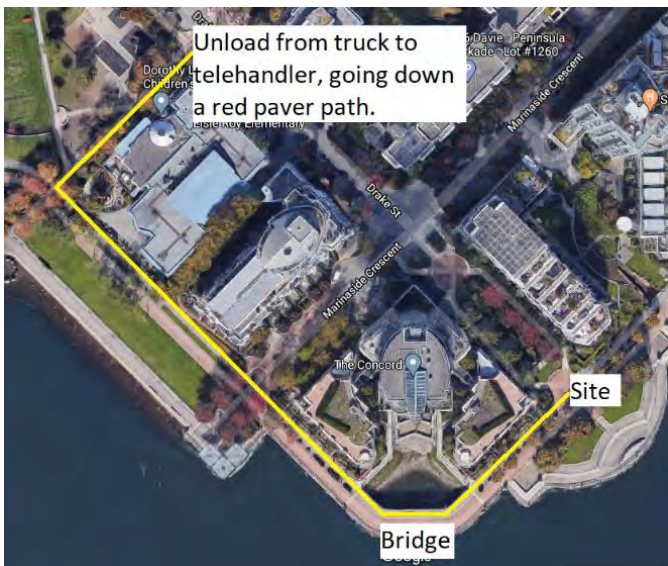
1. Excavation
2. Place below ground foundation (concrete pad)
3. Place above ground base, secure to foundation
4. Place sculpture, secure to base
5. Secure door

Transport

Each piece of the installation (foundation, above-ground base, sculpture) will be transported individually using a telehandler to minimize weight during transport.



Top: Path A
Centre Left: Path A entrance
Centre Right: Path B entrance
Bottom Left: Path B
Bottom Right: Bridge



CoV Branch	Comment	Biennale Reponse
Sewers/Transportation	<p>Location:</p> <ul style="list-style-type: none"> - Must be 1.5m away from the edge of the existing storm sewer - May create a bike/pedestrian conflict (people trying to look at it or take pictures may end up standing in the bike path) - Alternative locations from Transportation in attached document, also suggested going onto the grass lawn to further distance from the bike path 	We're pleased to change the location to the recommended Option 1.
Sewers	Dimension clear distance from edge of existing sewer on drawing	We're pleased to change the location to the recommended Option 1.
Sewers/Public Art	What is the total weight of piece in lbs (including sculpture, foundation, and round "stone")?	<p>Sculpture: 2,000 lbs</p> <p>Base (round stone): 4,000lbs</p> <p>Foundation: TBD</p>
Sewers	What is the expected response time if the piece needs to be removed for sewer maintenance?	Are there any plans for sewer upgrade or maintenance in the next two years? If the concern is only for emergency repairs, we can plan accordingly and answer back on this.
Public Art	Is the concrete slab large/heavy enough to support the piece without any mechanical or structural tethering to the sub-grade?	Waiting for engineer confirmation.
Public Art	How will removed pavers be stored? Will the same pavers be re-installed when the work is removed in the future?	We will source matching pavers for re-installation after the artwork is removed. If the COV has information on the supplier, we could potentially pre-order the pavers now to ensure there is enough for re-install.
Public Art	Does the access hatch lock?	Yes, the door is bolted shut.
Public Art	What is the material of the sculpture?	Stainless steel
Public Art	What is the installation/de-installation plan? There are weight restrictions along the seawall and access to this location with a large transport vehicle is difficult.	See attached.
Public Art	Is the attachment mechanism also signed off by an engineer, or is just the foundation plan?	Yes, All-Span engineering has signed off on all bolts, joints, connections.
Geotechnical	How does the design accommodate for loading of the structure to prevent settlement beneath the statue and its immediately surroundings?	Waiting for engineer confirmation.

Temporary Public Art Proposal

The City of Vancouver recognizes the arts as an essential element in a vital, creative, and balanced city and seeks to actively facilitate participation in and access to the arts for all.

Proposal

A temporary public art installation is being considered for the small plaza adjacent to the Seawall between 1288 and 1328 Marina Crescent. Installation of the artwork will take place in early March and will be installed for two years.

The Proud Youth by Chinese artist Chen Wenling is a representative piece of Chen's Red Memories Series. His vocabulary usually includes exaggerated forms, bright colours, whimsical and metaphorical tones. The artwork is named after a popular martial arts heroes' novel *The Smiling, Proud Wanderer* (Xiao Ao Jiang Hu 笑傲江湖), which means to live a carefree life in a mundane world of strife.

Funding

Please note the Vancouver Biennale will be responsible for the installations and the proposed artworks will be installed at no cost to the City of Vancouver or its residents.

Feedback

You can share your thoughts regarding this temporary public art proposal by sending an email to info@vancouverbiennale.com by Friday, February 26.



Installation Plan

The Proud Youth

Chen Wenling

Revised February 11, 2021

On-site Contacts

Sammi Wei

Vancouver Biennale

s.22(1)

Carson Hewlett

Belton Direct Rigging

778 908 8647

Installation Schedule

Daily Hours 7AM to 4PM

- | | |
|-------------|---|
| February 25 | Perform pre-installation geotechnical survey.
Clear BC One Call. |
| March 1-2 | Excavate foundation hole and prepare base soil: <ul style="list-style-type: none">- Dispose all excavated materials off site. |
| March 2-3 | Form base and pour concrete pad: <ul style="list-style-type: none">- Park concrete mixer on Marina Crescent and use piping through green space to site.- See approved TMP for details. |
| March 4-7 | Allow concrete pad to cure. |
| March 8 | Install sculpture: <ul style="list-style-type: none">- Transport pedestal and sculpture separately to site.- Secure pedestal to concrete pad with internal bolted anchors.- Place sculpture onto pedestal using telehandler.- Secure sculpture to base using build-in anchors.- See approved TMP for details. |

An aerial photograph of a park area with various technical overlays. A green line runs diagonally across the image. A red line segment is highlighted, with a red circle at its end labeled '5/21'. A blue rectangle is outlined, with a blue circle at its bottom-right corner labeled '6/00'. A black line segment connects the red rectangle to the blue rectangle. A white square is located near the red rectangle. A black line segment connects the red rectangle to the blue rectangle. A black line segment connects the red rectangle to the blue rectangle.

Red indicates 1.3m overhang
at 3.2m height above ground

Blue is below-ground
base of 3.6m x 2.63m

Closest point to
sewer is 5.3m