

From: **"Mochrie, Paul" <Paul.Mochrie@vancouver.ca>**
To: **"Direct to Mayor and Council - DL"**
Date: 8/28/2023 10:02:27 AM
Subject: Memo - Hastings-Sunrise - Adanac Overpass Traffic Calming Engagement - Phase 2
Attachments: ENG - Memo - Hastings-Sunrise - Adanac Overpass Traffic Calming Engagement - Phase 2 - RTS 12874.pdf

Dear Mayor and Council,

Please see the attached memo from Lon LaClaire on **Hastings-Sunrise - Adanac Overpass Traffic Calming Engagement - Phase 2**. A short summary of the memo is as follows:

The Hastings- Sunrise (Adanac Overpass) Traffic Calming is the second of two pilot projects in the City's refreshed Neighbourhood Traffic Management Program (NTMP). The program aims to address vehicle speeds and volumes on local streets through quick- build measures

Based on feedback received from Phase 1 engagement (March-April 2023), staff have developed a traffic calming plan for the area that allows general purpose vehicles to continue using the Adanac Overpass.

From August 30 – September 29, we are inviting residents to participate the second of the two-phase engagement process. In this phase, residents can comment on the traffic calming measures that are being considered.

Staff will refine the traffic calming plan based this feedback and anticipate beginning implementation of selected measures in 2024.

If you have any questions, please feel free to contact Lon LaClaire at 604-873-7336 or lon.laclaire@vancouver.ca.

Best,
Paul

Paul Mochrie (he/him)
City Manager
City of Vancouver
paul.mochrie@vancouver.ca



The City of Vancouver acknowledges that it is situated on the unceded traditional territories of the xʷməθkʷəy̓əm (Musqueam), Sḵwəxwú7mesh (Squamish), and səlilwətał (Tsleil-Waututh) Nations.

MEMORANDUM

August 25, 2023

TO: Mayor and Council

CC: Paul Mochrie, City Manager
Armin Amrolia, Deputy City Manager
Karen Levitt, Deputy City Manager
Maria Pontikis, Chief Communications Officer, CEC
Rosemary Hagiwara, Acting City Clerk
Teresa Jong, Administration Services Manager, City Manager's Office
Mellisa Morphy, Director of Policy, Mayor's Office
Trevor Ford, Interim Chief of Staff, Mayor's Office

FROM: Lon LaClaire
General Manager, Engineering Services

SUBJECT: Hastings-Sunrise (Adanac Overpass) Traffic Calming Engagement – Phase 2

RTS #: 12874

This memo provides an update and overview of upcoming stakeholder and public engagement in the Hastings-Sunrise (Adanac Overpass) area as part of the Neighbourhood Traffic Management Program.

Project Overview

Staff have reviewed feedback from the first phase of engagement in Spring 2023 and developed a package of proposed quick-build traffic calming measures to address higher than desirable vehicle volumes and speeds on local streets.

We heard support for keeping the Adanac Overpass open for all road users. However, for Adanac Street to feel safe, comfortable and accessible for all users, we're proposing a concept for the longer-term rebuild of Adanac St between Boundary Rd and Rupert St.

Phase 1 Community Engagement

In mid-March 2023, residents and businesses in the Hastings-Sunrise (Adanac Overpass) area were invited to help staff confirm key traffic issues related to vehicle volumes and speeds on local streets in five areas of the neighbourhood. An overview of engagement activities is

provided in the '*Hastings-Sunrise (Adanac Overpass) Traffic Calming Engagement Phase One Council Memo*' found in Appendix A.

During engagement, we heard that:

- People would like the Adanac Overpass to stay open for all modes of transportation.
- A majority of people agreed with the data presented on vehicle speeds and volumes in the neighbourhood.
- Many people wanted to see traffic calming measures that reduce vehicle speeds and volumes, and improved safety and comfort for people walking and biking, especially near schools and community amenities.

Proposed Neighbourhood Traffic Management Plan

Traffic calming measures have been developed collaboratively with Vancouver Fire and Rescue Services to support emergency response. The proposed plan (found in Appendix B) gives consideration to:

- The **Adanac Overpass remaining open** - the route will continue to carry higher than typical vehicle volumes for a local street, so a proposed redesign of Adanac St (from Boundary Rd to Rupert St) will provide improvements like protected bike lanes, raised crossings, improved transit stops and clearer separation between parked vehicles and sidewalk spaces.
- **New vehicle diversionary measures** that discourage drivers from using local streets to access the Adanac Overpass and lower vehicle volumes on local streets.
- **Additional Speed control measures** to encourage drivers to slow down when using local streets such as Charles St and E Georgia St.
- **Safety improvement measures** for people walking, biking and rolling, especially near community amenities such as parks and schools.


Phase 2 Community Engagement and Next Steps

In September 2023, residents will receive notification letters inviting them to share feedback about the proposed measures. Engagement is scheduled from August 30 – September 29, 2023. In addition to an online survey, staff will be hosting three community pop-up events, a virtual workshop and stakeholder meetings for area schools and other institutions.

Community members can learn more at vancouver.ca/adanac-overpass or by emailing staff at adanac@vancouver.ca.

After fall engagement, staff will refine the traffic calming measures and begin implementation in 2024. Additional design work and construction coordination is needed for Adanac St. We will continue to share project and program updates with Council. Please contact me directly should you have any questions.

Sincerely,

A handwritten signature in blue ink, appearing to read 'Lon LaClaire', with a horizontal line extending to the right.

Lon LaClaire, M.Eng., P.Eng.
General Manager, Engineering Services
604.873.7336 | lon.laclaire@vancouver.ca

Appendix A – *Hastings-Sunrise (Adanac Overpass) Traffic Calming Engagement Phase One Council Memo*

MEMORANDUM

March 10, 2023

TO: Mayor and Council

CC: Paul Mochrie, City Manager
Armin Amrolia, Deputy City Manager
Karen Levitt, Deputy City Manager
Maria Pontikis, Chief Communications Officer, CEC
Rosemary Hagiwara, Acting City Clerk
Teresa Jong, Administration Services Manager, City Manager's Office
Mellisa Morphy, Acting Chief of Staff, Mayor's Office
Trevor Ford, Director of Operations, Mayor's Office

FROM: Lon LaClaire
General Manager, Engineering Services

SUBJECT: Hastings-Sunrise (Adanac Overpass) Traffic Calming Engagement

RTS #: 12874

This memo provides an overview of upcoming stakeholder and public engagement in the Hastings-Sunrise (Adanac Overpass) area as part of the Neighbourhood Traffic Management Program.

Neighbourhood Traffic Management Program

This part of Hastings-Sunrise, focused on the Adanac Overpass area (bound by Renfrew Street, Boundary Road, East Hastings Street and East 1st Ave), is the second of two pilot projects in the City's refreshed Neighbourhood Traffic Management Program (NTMP) which supports traffic calming on a neighbourhood scale. A map of the project area can be found in Appendix A.

The recently refreshed NTMP aims to address vehicle speeds and volumes on local streets through quick-build measures that improve safety and comfort for people walking, cycling and living in the area. Staff shared an update on the program with Council in the attached June 2022 memo "Neighbourhood Traffic Management Program Update" found in Appendix B. In 2022, staff completed engagement for the first pilot project in Strathcona and implementation of traffic calming measures started in February 2023 and is anticipated to be completed later this year.

Hastings- Sunrise (Adanac Overpass) Area

The Hastings-Sunrise (Adanac Overpass) area was identified as a priority to follow-up on community conversations that began with a 'Listen and Learn' session with local residents in 2017 and a commitment from City staff during the Fortis 1st Avenue construction and temporary Adanac Overpass closure in 2018 to explore longer-term solutions to traffic management issues. Further conversations were delayed due to the COVID-19 pandemic. Staff are ready to return to the community and have analysed historical and new data based on earlier feedback.

Community Engagement

In March 2023, we are inviting residents to participate in the first of a two-phase engagement process. In this phase, staff will share how various traffic calming measures can address different issues and would like to confirm the core issues and opportunities for traffic calming local streets in five focus areas of the neighbourhood.

Engagement is scheduled from March 16 - April 28, 2023. Staff are hosting community pop-up events and virtual workshops for residents and stakeholder meetings for area schools and other institutions. Additionally, a survey will be available online on Shape Your City and social media. Residents and businesses in the area will receive a notification letter in the mail detailing the date, time and how to participate in the workshops or share feedback online (please refer to Appendix C for the notification letter).

Community members can learn more at vancouver.ca/adanac-overpass or by emailing staff at adanac@vancouver.ca.

Next Steps

Staff anticipate returning for a second phase of engagement in early Summer 2023 to review traffic calming options that have been developed based on analysis and community input from the first phase. Traffic calming measures will start to be implemented later this year using quick-build and interim materials.

The Neighbourhood Traffic Management Program team has started data collection in the next two project areas identified using the program selection framework (further detail provided in June 2022 Memo found in Appendix B). Later this year staff will engage with the nearby Renfrew Northwest community and prepare for engagement with Killarney Northeast and Joyce East neighbourhoods in early 2024.

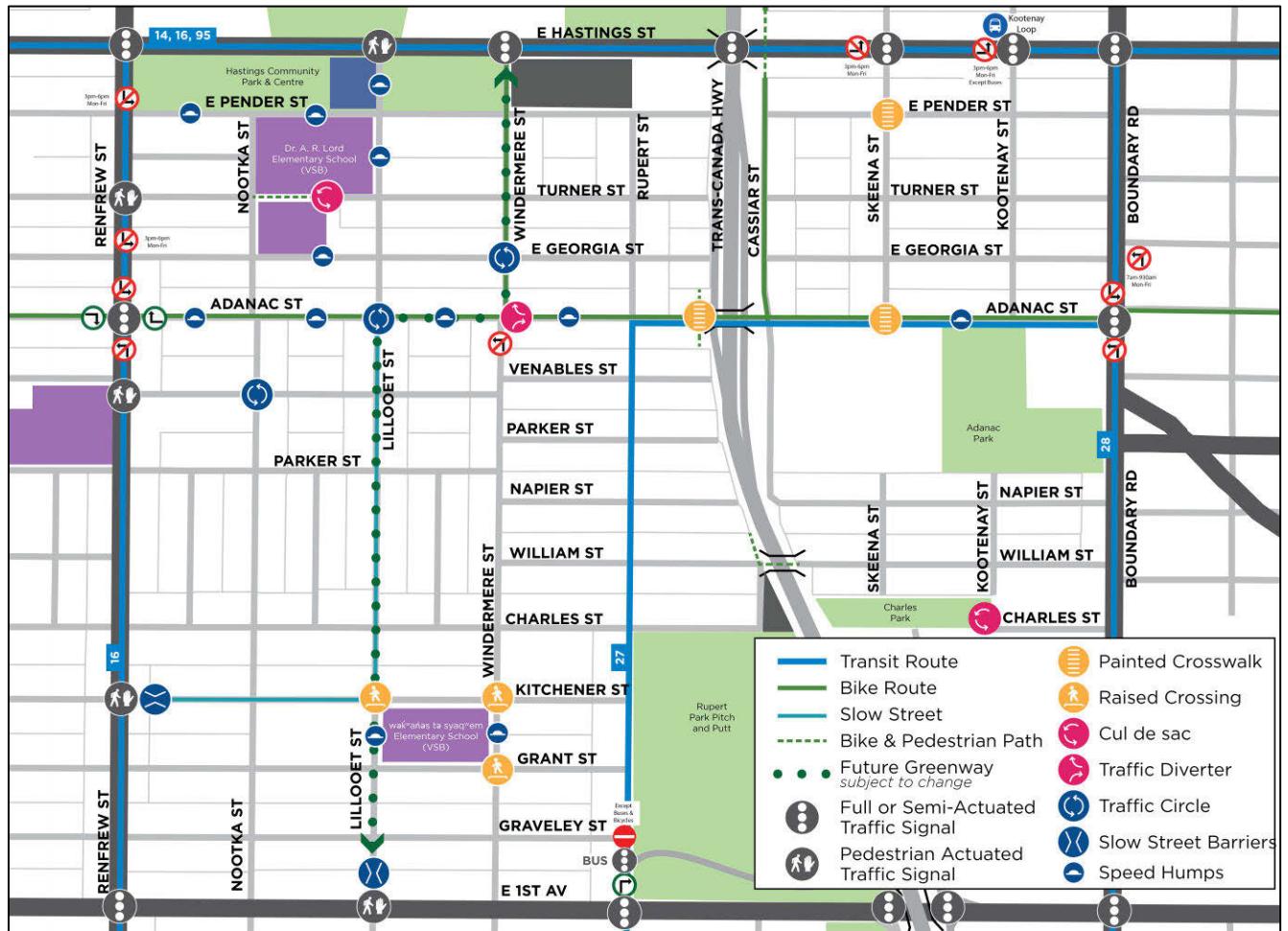
We will continue to share project and program updates with Council. Please contact me directly should you have any questions.

Sincerely,



Lon LaClaire, M.Eng., P.Eng.
General Manager, Engineering Services
604.873.7336 | lon.laclaire@vancouver.ca

Appendix A - Map of project area with current transportation conditions



**Appendix B – Neighbourhood Traffic Management Program Update,
June 7, 2022**

From: ["Mochrie, Paul" <Paul.Mochrie@vancouver.ca>](mailto:Paul.Mochrie@vancouver.ca)

To: ["Direct to Mayor and Council - DL"](#)

Date: 6/8/2022 7:55:24 PM

Subject: [Council Memo - RTS 13982 - Neighbourhood Traffic Management Program Update](#)

Attachments: [ENG - Council Memo - RTS 13982 - Neighbourhood Traffic Management Program Update.pdf](#)
[Memo - Neighbourhood Traffic Management Program and Slow Streets Update.pdf](#)

Dear Mayor and Council,

Please see the attached memo from Lon LaClaire regarding Neighbourhood Traffic Management Program Update. A short summary of the memo is as follows:

- Staff have continued to develop the new Neighbourhood Traffic Management Program. This memo represents the first phase of a two-phase report to Council, with phase two anticipated in 2023.
- Through internal discussions and engagement with Advisory Committees, the program scope, goals, and a selection framework for prioritizing neighbourhoods have been established.
- Using the selection framework, two project areas were identified for 2023: Renfrew Northwest and the adjacent neighbourhoods of Killarney Northeast and Joyce East.
- Work on the Strathcona and Hastings Sunrise (Adanac Overpass) pilot neighbourhoods is underway. Strathcona completed engagement in April and will move onto construction this summer, while Hastings-Sunrise is at the data collection stage, with engagement planned for late fall 2022.

If you have any questions, please feel free to contact Lon LaClaire at 604-873-7336 or lon.laclaire@vancouver.ca.

Best,
Paul

Paul Mochrie (he/him)
City Manager
City of Vancouver
paul.mochrie@vancouver.ca



The City of Vancouver acknowledges that it is situated on the unceded traditional territories of the x^wməθk^wəyəm (Musqueam), Skwxwú7mesh (Squamish), and səlilwətał (Tsleil-Waututh) Nations.

MEMORANDUM

June 7, 2022

TO: Mayor and Council

CC: Paul Mochrie, City Manager
Armin Amrolia, Deputy City Manager
Karen Levitt, Deputy City Manager
Katrina Leckovic, City Clerk
Lynda Graves, Administration Services Manager, City Manager's Office
Maria Pontikis, Chief Communications Officer, CEC
Anita Zaenker, Chief of Staff, Mayor's Office
Neil Monckton, Chief of Staff, Mayor's Office
Alvin Singh, Communications Director, Mayor's Office
Paul Storer, Director, Transportation

FROM: Lon LaClaire
General Manager, Engineering Services

SUBJECT: Neighbourhood Traffic Management Program Update

RTS #: 13982

Purpose

This memo is an update for RTS 13982 – Council's request in July 2020 to report back on the feasibility of a second phase of the Neighbourhood Traffic Management Plan for Hastings-Sunrise.

This memo provides an update on:

- the development of the new *Neighbourhood Traffic Management (NTM) Program*,
- two pilot projects in the Strathcona and Hastings Sunrise neighbourhoods and
- upcoming work including selection of the next two neighbourhoods for the Program.

This memo refers back to and builds on the content of the October 2021 memo titled "Neighbourhood Traffic Management Program and Slow Streets Update" which is included as an attachment to this memo.

This represents the first phase of a two-phase report to Council on the new NTM Program. Phase two, which will include updated data as well as lessons learned from completion of the pilot neighbourhood projects, is anticipated in 2023.

Neighbourhood Traffic Management Program Update – Phase One

Staff have continued to develop the Neighbourhood Traffic Management framework in preparation for this phase one update.

Since October, the three ‘Key Opportunities’ for the program, which are to *expand equity*, *expand scale*, and *improve efficiency*, have evolved into three program principles and five program goals.

The three program principles are:

- The program is structured to address speeding and shortcutting issues on local streets.
- The program will be delivered at a neighbourhood scale.
- Neighbourhoods will be selected using a data-driven and equity-informed approach.

The following program goals have been identified:

1. Improve comfort for people walking, rolling or biking on local streets
2. Improve safety for all people using local streets
3. Implement an objective and equitable approach for selecting neighbourhoods
4. Inform interventions with broad and equitable engagement
5. Encourage coordination with related city initiatives to identify co-benefit opportunities

These principles and goals have been presented to and refined based on discussions with Council Committees. Staff reached out to eight Civic Committees in Q1 and Q2 of 2022 to discuss the Neighbourhood Traffic Management Program Framework. In total, five Committees responded with interest including the Children Youth and Families Committee, Seniors Advisory Committee, Persons with Disabilities Advisory Committee, the 2SLGBTQ+ Advisory Committee, and the Transportation Advisory Committee.

Planned Neighbourhood Traffic Management Program Approach

To support the program goals, staff have developed a framework for selecting neighbourhoods, a process for working with communities to deliver projects and an expanded toolkit of interventions for traffic management on local streets.

As other City programs, such as *Moving Towards Zero*, already focus on arterial and collector streets, where there are the most barriers to walking and cycling as well as levels of collisions, the Neighbourhood Traffic Management Program will focus on local street traffic calming. Additionally, since local streets provide direct access to many homes and amenities like parks, community centres and schools, they are also places where traffic calming interventions could be linked with opportunities for enhanced community spaces and placemaking.

To work at the scale of a neighbourhood, staff used arterial streets to create neighbourhood boundaries. From a transportation network perspective, local streets between arterials should generally provide local access and not be carrying longer-distance trips.

Using arterial streets as boundaries, the City was divided into 139 neighbourhood areas as a starting point for neighbourhood analysis (shown in Figure 1). The neighbourhoods are numbered for ease of reference only, and not related to prioritization or importance. Areas of the city with few local residential streets, including the downtown peninsula and industrial areas, were excluded from this framework. Neighbourhoods within or largely within the Broadway Plan area were also excluded as the area is expected to be assessed through more detailed implementation work as part of this ongoing planning process.

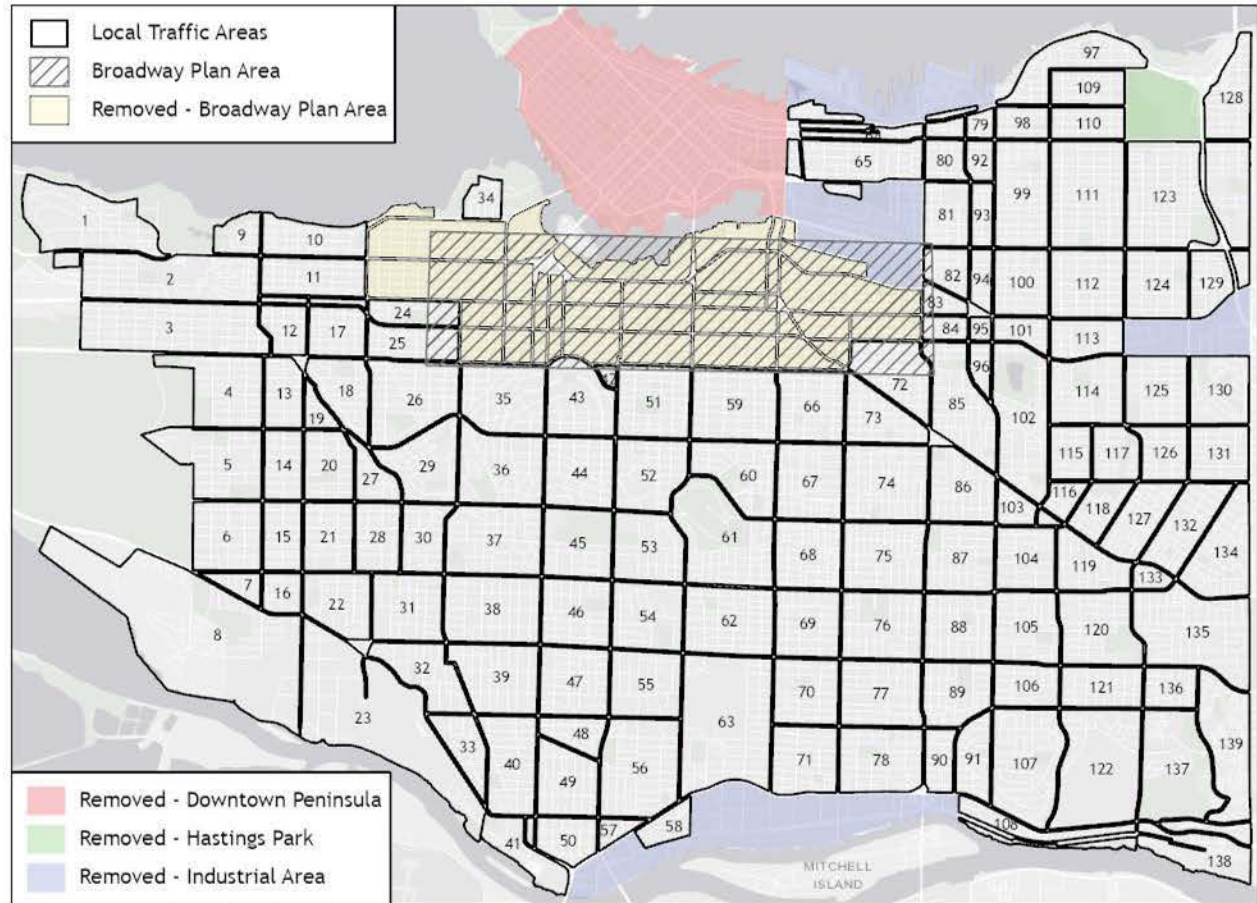


Figure 1: Neighbourhood Analysis Areas

Neighbourhood Selection Framework

Staff explored various criteria that could be used to prioritize neighbourhoods for traffic calming. The selected data (shown in Table 1) is based on research, existing data sources, and review of other North American best practices, including frameworks from Boston, Seattle, Toronto, North Vancouver, Philadelphia and Oakland.

Additional information is provided in Appendix A – Selection Framework Data, Limitations, and Detailed Analysis.

A two-stage refinement process was developed to account for various factors. The first stage of analysis helps determine a neighbourhood's potential to benefit from a traffic management program. The output for this stage is a list of the ten neighbourhoods with the highest Neighbourhood Scores, based on safety, demographic, amenity and traffic data.

Table 1: First Stage Analysis Criteria

Criteria	Data Source	Description/Rationale
Safety	ICBC Collision Reports	<ul style="list-style-type: none"> Highlighting areas of the city with higher pedestrian collision rates on local streets, as tracked by ICBC
Demographics	Activities of Daily Living	<ul style="list-style-type: none"> Highlighting areas of the city with a greater population of people with disabilities, seniors and children, all of whom are more vulnerable to vehicle collisions
	Seniors (65 years of age and over)	
	Children (0-14 years of age)	
Amenities	Civic Amenities	<ul style="list-style-type: none"> Highlighting areas of the city with high concentrations of community amenities, which are often a key driver of trips in neighbourhoods
Traffic	Shortcutting Intensity *	<ul style="list-style-type: none"> Highlighting neighbourhoods with more through traffic on local streets

* A methodology for a city-wide assessment of shortcutting intensity is under development and will be considered in the next iteration of this selection process. This is a new data source to the city, and staff are testing its applications and limitations.

As there are other potential considerations that could impact the suitability of a neighbourhood for traffic management, the Neighbourhood Score is used as a *first step* to determine a neighbourhood's potential to benefit from a traffic management program.

The second stage of analysis includes additional considerations for the ten highest scoring neighbourhoods to better reflect program goals, and impacts or opportunities created by other ongoing city initiatives. Factors relate to equity and city initiatives, and are listed below in Table 2.

Table 2: Second Stage Analysis Criteria - Community Context

Criteria	Data Source	Description/Rationale
Equity	Disproportionately Impacted Communities	<ul style="list-style-type: none"> As referred to in the <i>Climate Emergency Action Plan (2020)</i>
City Initiatives	Current Planning and Development	<ul style="list-style-type: none"> Major land use projects like Jericho Lands, Senakw, Oakridge, etc.
	Upcoming projects with co-benefits	<ul style="list-style-type: none"> Greenway and bikeway projects, green infrastructure project, sewer renewal, city led developments

Based on the outcomes of the second analysis stage, approximately two neighbourhoods will be selected for the following year's program.

2023 Neighbourhood Selection

Figure 2 below shows the ten highest scoring neighbourhoods from the first stage of analysis:

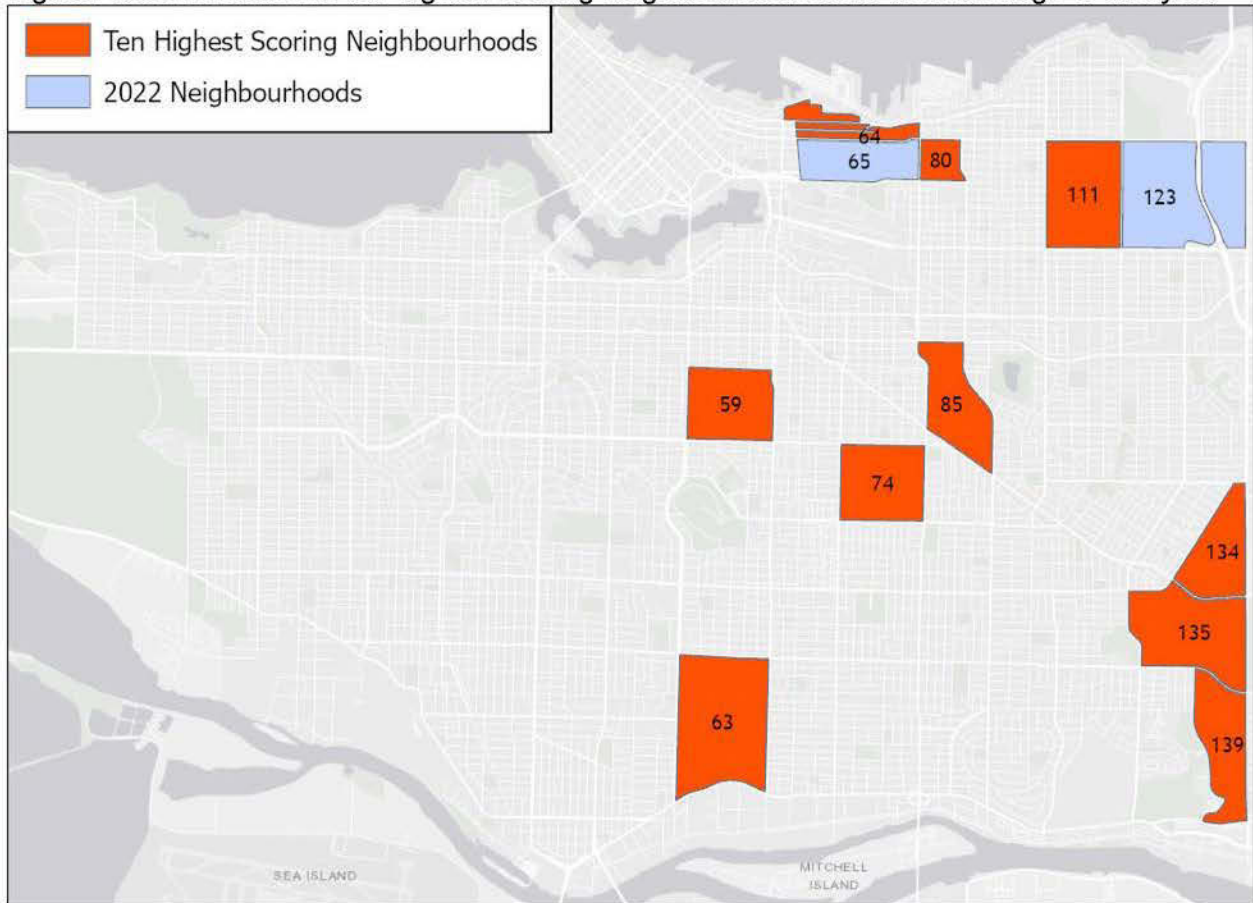


Figure 2: Ten Highest Scoring Neighbourhoods

These neighbourhoods were individually assessed based on criteria in the second stage of analysis to determine which should be undertaken first.

The second stage analysis for the ten highest-scoring neighborhoods is discussed in Appendix A. After considering the various factors, three of these neighborhoods have been selected for the next Neighbourhood Traffic Management Program work:

- #111: Renfrew Northwest (the area bounded by Nanaimo St., Renfrew St., E Hastings St. and E 1st Ave.)
- #134 & #135: Joyce East and Killarney Northeast (two adjoining neighbourhoods – the area bounded by E 41st Ave./Joyce St., Boundary Rd, Rupert/Kerr St. and 49th Ave.)

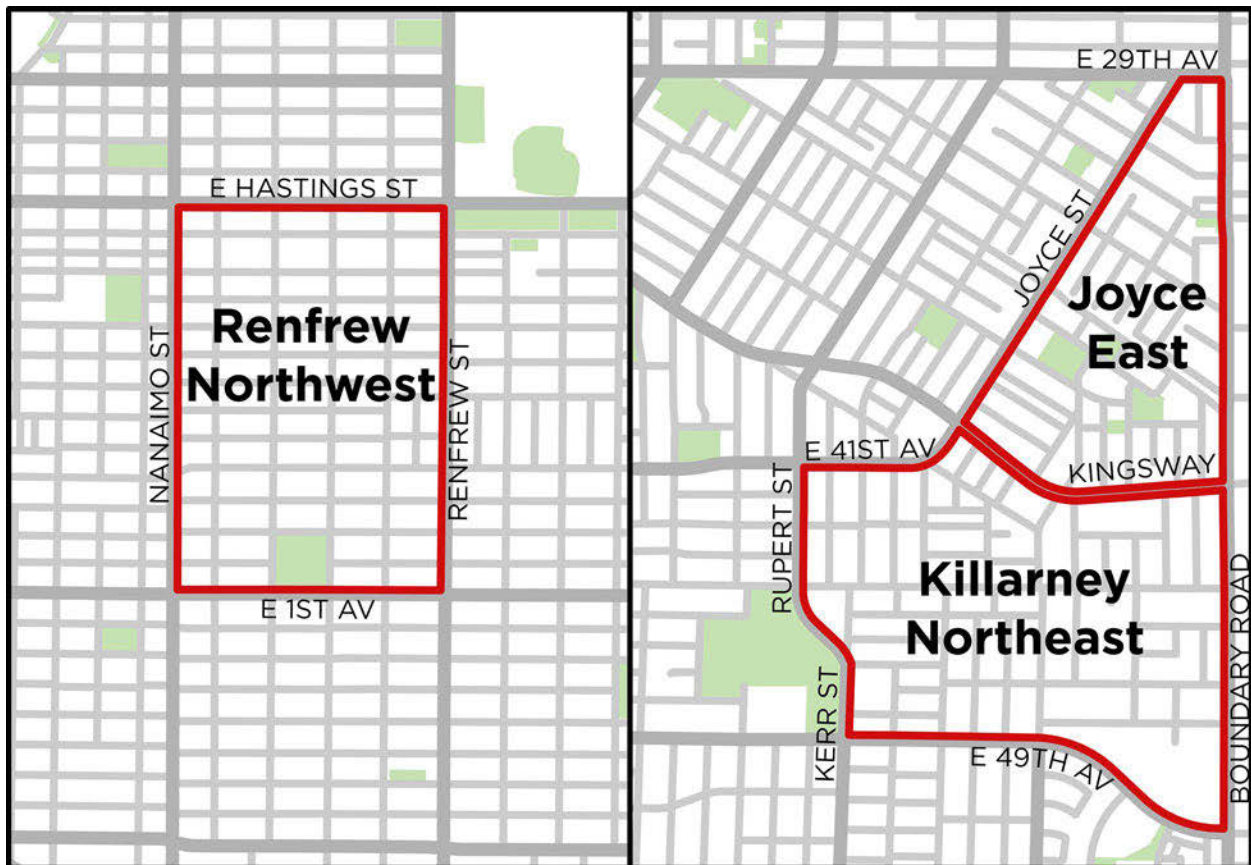


Figure 3: Selected Neighbourhoods

These neighbourhoods were selected based on strong scores on the Disproportionately Impacted Communities map, as well as opportunities to enhance future greenways as a co-benefit. Work on these neighbourhoods will take place after the pilot projects are completed. Initial data collection will proceed in the interim to provide a baseline for future evaluation.

Working with Communities

A proposed rolling annual work program which selects neighbourhoods for the following year's program each spring is outlined below. Due to evolving data and opportunities around other city or development projects, a refreshed prioritization is anticipated each year.

The process will be focused on implementing technical interventions that address speeding and shortcutting issues to meet community needs, based on conversations and engagement. As traffic calming measures can have complex impacts, we anticipate hearing diverse feedback about proposed interventions. Understanding this, the goal of each engagement process will be to seek general support, rather than unanimous agreement on any new measures. The traffic calming will generally use quick-build and/or interim measures where possible to allow interventions to be adjusted in response to monitoring and feedback.

Table 3: Program Schedule

Year 1- Fall	<p>Data Collection – Baseline</p> <ul style="list-style-type: none"> • Speed and volume data is collected in advance of engagement
Year 1- Winter/ Spring	<p>Challenges and Opportunities Assessment Staff review existing conditions and listen to community feedback about issues and opportunities</p> <p>Draft Intervention Development</p> <ul style="list-style-type: none"> • Draft interventions are developed and community engagement helps refine priorities and designs.
Year 1 – Summer	<p>Implementation of Quick Build Measures</p> <ul style="list-style-type: none"> • Traffic calming measures are implemented using quick build measures, including interim improvements
Year 2- Fall	<p>Data Collection and Adjustments</p> <ul style="list-style-type: none"> • Data is collected in the following fall, approximately 1 year after the initial collection. Interventions may be adjusted based on observations and feedback from the community.

There may be traffic calming concerns that don't fit within the NTM program but can be advanced without a full-scale neighbourhood plan. Allowing for some spot improvements outside of the formal NTM program will allow staff to respond to smaller-scale concerns and emerging issues.

Neighbourhood Traffic Management Toolkit

Speed humps, traffic circles, raised crossings, whole or partial street closures, diverters and curb bulges characterize the majority of the traffic calming features implemented on local streets in the past 20 years. These measures will continue to be used when appropriate for neighbourhoods selected under the NTM Program. However, opportunities will be taken to pilot new kinds of traffic calming measures that may be more effective in slowing vehicles or discouraging through traffic. Emergency responders will be engaged in the design and implementation of any new measures as part of this program.

In order to expedite implementation, traffic calming measures are expected to be built using durable quick-build materials where possible, including temporary concrete barriers. These materials allow for the interventions to be quickly adjusted or removed. The current Neighbourhood Traffic Management program is funded to address as many neighbourhoods as possible – additional funding would be needed in future capital plans to upgrade from interim to permanent measures, if desired.

Strathcona and Hastings Sunrise (Adanac Overpass) Pilot Neighbourhoods Update

Work on the first pilot neighbourhood of Strathcona is well underway. After conducting data collection and analysis in January and February of this year, engagement ran from March 14th to April 4th. In total, five new traffic calming measures were proposed with the aim of resolving identified speeding and shortcutting issues in the neighbourhood.

Community interest in the engagement was strong, with more than 225 survey responses. Residents were generally supportive of the proposed traffic calming measures. In total, five traffic calming measures were well supported by the community:

1. Crossing upgrades and new curb ramps at E Pender St and Dunlevy Ave
2. A 30km/hr speed limit for all local residential streets in the neighbourhood, with new speed limit signage at entry points
3. A section of one-way street (southbound) along Campbell Ave, north of E Pender
4. Alternating bulges (chicane) along Campbell Ave between Keefer St and E Georgia St
5. A pinch point (restricted road width) for vehicles on Glen Dr, south of E Georgia

These five measures will be implemented this summer. Data collection and monitoring will follow, approximately one year after the initial data collection efforts, in order to assess the impacts of the new measures and consider changes. A more detailed engagement summary with further design details will be provided to Council in early June.

Work on the second pilot neighbourhood in Hastings-Sunrise near the Adanac Overpass has also begun. Data collection is currently underway, and staff will use the summer months to conduct analysis and prepare for community engagement. Consultation with the neighbourhood is expected to begin in fall 2022, with implementation of measures in Q2 2023.

Next Steps

Key activities in the coming months will focus on continued work with the pilot neighbourhoods, initiating data collection and analysis for the next round of neighbourhoods, and preparing to report back on a finalized program framework in Q1/Q2 of 2023.

Please contact me directly should you have any questions.

Sincerely,



Lon LaClaire, M.Eng., P.Eng.
General Manager, Engineering Services

604.873.7336 | lon.laclaire@vancouver.ca

Appendix A – Selection Framework Data, Limitations and Analysis

Stage 1 Analysis

The first step on analysis relies on defined quantitative data from the City of Vancouver and third party sources. These data have been selected to directly and indirectly represent traffic exposure and safety, vulnerable populations, and neighbourhood amenities. Taken together these indicate the potential benefit that the NTM program could bring to a neighbourhood. Several weightings of the variables were tested by staff in the development of the framework before finalizing the strategy.

As with all data, there are limitations, which is why a second level of analysis is also completed.

1. Safety

Metric: Number of vehicle-pedestrian and vehicle-bicycle collisions from the last five years (2016-2021) with an injury or fatality. Collisions on Arterial, Collector, and Industrial streets are removed. The data is normalized based on the length of local streets in the neighbourhood to avoid bias due to the size of a neighbourhood.

Rationale for inclusion: Safety is one of the key goals of the NTM program, and collision data is the best available citywide data.

Data sources ICBC collision data, 2016-2021. Data will be updated annually to include the most recent five years.

Data limitations and mitigations: This data does not cover near-misses, perceptions of safety, or traffic exposure and effects of noise and pollution on active transportation. Community feedback and engagement may assist with provide these details, as will future traffic data sources.

2. Demographics

Metric: Total population of children, seniors, and people with disabilities in each neighbourhood.

Rationale for inclusion: Children, seniors, and people with disabilities are at greater risk of traffic incidents due to moving more slowly, being more at risk for tripping or falling, and being less visible to drivers. Total population rather than percentage was used to ensure that higher density neighbourhoods are not penalized.

Data sources: 2016 Census data at the Dissemination Area level including:

- Children: Total population 0-14 years
- Seniors: Total population 65 years or greater
- People with Disabilities: Based on the “Activities of Daily Living” census data. Total population which indicated any difficulty with any of the following:
 - seeing
 - hearing
 - walking

- using stairs
- using hands or fingers or doing other physical activities
- learning, remembering or concentrating
- emotional, psychological or mental health conditions
- other health problems or long-term conditions that have lasted or the respondent expects to last six months or more.

Data limitations and mitigations: At the time of this analysis, a full dataset was only available from the 2016 Census. Data will be updated to the 2021 Census once it is available. The Activities of Daily Living data is not typically used to estimate the total population of people with disabilities, but rather used to identify people who are likely to have a disability for a follow-up survey. It was used as this is the only neighbourhood-level data available and is considered to be a reasonable proxy of disability for the purposes of this work.

3. Amenities

Metric: Locations of Schools (Independent and Public), childcare facilities, seniors' centres, community centres, parks, libraries

Rationale for inclusion: Neighbourhood amenities increase local trips in the neighbourhood and represent a strong opportunity to encourage active modes of travel and improve active connections within neighbourhoods.

Data sources: City of Vancouver datasets for:

- public schools
- independent schools
- childcare facilities
- seniors' centres
- Community centres
- parks
- libraries

Facilities located on arterials were included. Multiple facilities on the same site (e.g., library and community centre in the same building) were counted separately. Data was normalized based of the total street length within the neighbourhood to avoid overweighting larger neighbourhoods.

Data limitations and mitigations: Different amenity types and combinations drive different numbers of trips, and some are more likely to drive trips from outside the neighbourhood as opposed to from within or nearby. While there may be significant benefits from improving conditions for walking and cycling in amenity rich neighbourhoods, this metric has the lowest weighting to avoid penalizing neighbourhoods with fewer amenities.

4. Traffic

Metric: Shortcutting traffic volumes

Rationale for inclusion: The NTM Program is specifically focussed on dealing with local traffic issues like shortcutting. Neighbourhoods which experience a high degree of shortcutting often also perceive issues with speeding.

Data sources: Streetlight Data, a company which uses geolocation location data to estimate traffic flows.

Data limitations and mitigations: This is a new data source to the city, and staff are still learning about its applications and limitations. Additional information on this data will be included in a second phase report on the NTM Program in 2023.

The neighbourhoods with the highest NTM opportunity scores from the first stage of analysis were then put through a second stage qualitative analysis, which looks at equity, co-benefits with other city projects, and resident requests related to traffic calming.

Stage 2 Analysis

1. Equity:

Metric: Disproportionately Impacted Communities Index

Rationale for inclusions: Prior investment in traffic calming improvements may have been subject to institutional bias which particularly impacts some communities. By explicitly considering these communities in the selection analysis, staff can work towards addressing this historical imbalance.

Data Sources: 2016 Census data (census tracts):

- percent of residents who are indigenous
- percent of residents who do not speak an official language
- percent of residents who are visible minorities
- percent of residents who spend 30% or more of their income on shelter costs
- percent of families that are single-parent
- median income

Each metric is given a score from 1-10, then summed. As the census tracts do not line up exactly with the neighbourhoods, the neighbourhoods were given the highest DIC score of neighbourhoods they overlapped. This framework was previously used to approximate DICs as part of the Climate Emergency action plan.

Data Limitations and mitigations: Creating a metric for equity is challenging, as adding together different factors does not account for those who belong to multiple equity-seeking groups. Additionally, different areas of one neighbourhood may have different characteristics, and different needs. This metric will be updated to the city-wide

equity framework once it has been developed. These limitations are why the DIC index is used as a qualitative metric to inform the selection process.

2. City Initiatives

Metric: Upcoming city development and planning projects

Rationale for inclusions: Coordination with other city projects allows for efficient use of staff time and coordinated public engagement can help communities understand overlapping projects. Similarly, significant projects such as the Broadway Plan may provide similar benefits to NTM program.

Data Limitations and mitigations: City priorities and project timing can change, and new priorities may be identified.

Application of the Stage 2 Analysis – 2023 NTM Program

The table below illustrates the application of the Stage 2 analysis framework on the top ten neighbourhoods for the 2023 selection process.

Local Traffic Area	DIC 0-5	Co-benefits 0-5	Conflicts (Development, Planning Work) 0-5	Total Score
59 Riley Park Northwest	0	2 – Ontario Greenway Integration	4 – Some ongoing development, no significant conflicting planning work	6
63 Cambie Langara	2	0 – None identified	1 – Significant development related to Cambie Corridor and Marpole Plans, no significant conflicting planning work	3
64 Strathcona North	5	0 – None identified	1 - Some development, adjacent to Portside Greenway, Gastown, which could achieve similar benefits as NTM program	6
74 Kensington Cedar Cottage Southwest	3	0 – None identified	5 – Generally low amount of other development, no significant conflicting planning work	8
80 Grandview Woodland – Woodland Park	5	0 – None identified	4 – Some ongoing development, no significant conflicting planning work	9
111 Renfrew Northwest	4	3 - Potential to coordinate with adjacent improvements from Adanac process	5 – Generally low amount of other development, no significant conflicting planning work	12
130 Kensington Cedar Cottage Northeast	2	2 – Potential to coordinate with Trout Lake bypass	4 – Some ongoing development, no significant conflicting planning work	8
134 Joyce East	4	3 – TransLink led work on BC Parkway, ongoing work to improve walking connections	3 – Some ongoing development under station area plan, no significant conflicting planning work	10
135 Killarney Northeast	4	0 – None identified	5 – Generally low amount of other development, no significant conflicting planning work	9
139 Champlain East	1	0 – None identified	5 – Generally low amount of other development, no significant conflicting planning work	6

MEMORANDUM

November 18, 2021

TO: Mayor and Council

CC: Paul Mochrie, City Manager
Karen Levitt, Deputy City Manager
Katrina Leckovic, City Clerk
Lynda Graves, Administration Services Manager, City Manager's Office
Maria Pontikis, Director, Civic Engagement and Communications
Anita Zaenker, Chief of Staff, Mayor's Office
Neil Monckton, Chief of Staff, Mayor's Office
Alvin Singh, Communications Director, Mayor's Office

FROM: Lon LaClaire
General Manager, Engineering Services

SUBJECT: Neighbourhood Traffic Management Program and Slow Streets Update

RTS #: N/A

Purpose

This memo provides information on early directions for a new and expanded *Neighbourhood Traffic Management (NTM) Program* and work that staff will be undertaking in the coming months. This also provides an update to the *Slow Streets Program*. A summary of existing NTM related programs and initiatives is provided in Appendix A.

The Neighbourhood Traffic Management Program

Building off of the existing framework of programs, staff will report back in Q1 2022 with a proposed approach for neighbourhood traffic management moving forward. This approach would:

- Be **proactive** rather than reactive
- Use a **data-driven** prioritization strategy (including variables like collision, speed, volume history, equity variables, and location of community amenities)
- Incorporate **greenways, bikeways** and other **road space reallocation** efforts
- Include **follow-up** and **evaluation** of changes
- Take place at the **neighbourhood-level** scale

Existing programs such as the *Speed Hump Program* and the *Local Improvement Program* (LIP) are anticipated to remain.

With resourcing now in place, staff will continue to develop the new strategy over the coming months, and report back at the end of Q1 2022. This report will include a proposed prioritization strategy, early directions for pilot neighbourhoods, and considerations for program scale and potential funding.

Key Opportunities for a New Program

The new program will provide opportunities to improve how the City addresses neighbourhood traffic management, including:

1. **Improving Equity:** The majority of neighbourhood traffic management responses today are resident-initiated and reactive. This means that the program likely has a bias towards neighbourhoods with residents who have more time to participate in public process, comfort with engaging with the City, and/or financial resources funds (for LIP cases). By reflecting equity variables as part of a neighbourhood prioritization framework, the city could reduce potential bias between neighbourhoods.
2. **Expanding Scale:** Most existing NTM processes operate at the individual street or block level. Taking a neighbourhood based approach can improve overall performance and reduce the chances that traffic simply diverts to other streets, without resolving the root causes.
3. **Improving Efficiency:** By taking a proactive approach across neighbourhoods, the revised NTM program should help to reduce the number of citizen NTM requests over time, which in turn should reduce the resources needed to investigate these concerns.

Strathcona and Adanac Overpass Neighbourhoods

The Strathcona and Adanac Overpass neighbourhoods have a history of neighbourhood traffic management issues and have been prioritized as pilot neighbourhoods.

Work within Strathcona relates to and will be informed by the ongoing collector traffic calming pilot on Prior St to improve walkability, reduce vehicle speeds and increase street lighting levels. Strathcona also scored highly in an objective review of collisions, speed, vulnerable users and community amenities.

Staff will begin data collection and early stakeholder engagement for these neighbourhoods in Q4 2021. Emerging directions will be included in the broader NTM Council report in Q1 2022.

Slow Streets

Slow Streets were implemented as part of the 'rapid response' phase of the COVID-19 pandemic in order to provide more space for social distancing while walking, cycling and rolling. In total, 40km of slow streets were installed, at a total cost of approximately \$340,000 through the end of 2020. The network was envisioned as a short term program, to connect green spaces, high streets and neighbourhoods with consideration for equity and accessibility goals.

The initiative has been popular with residents (with over 70% support in City surveys), but the temporary plastic water filled barriers used across the network have been challenging to maintain, as barriers are frequently damaged by vehicles, moved or vandalized. To address these challenges, there has been a significant, unbudgeted effort across the network to monitor, replace, clean and reset barriers, with ongoing future costs of approximately \$25,000-\$30,000 per month.

The Future of Slow Streets

Based on ongoing public support for the program and concerns with potential for removals, staff expect to maintain the current network of slow streets through the winter as an unfunded program. This will be presented to council in the future as part of the 2022 operating budget as a one time expense.

Community stewardship of barriers has been considered as an interim solution, however there are challenges with coordination across the large network of slow streets, staff resources required to develop and manage the network of stewards, and safety considerations that would result from asking residents to manage equipment in the street.

Staff are exploring a number of options to capture the benefits of the program in the long term. Staff believe that a longer term Slow Street Network using lower maintenance materials is possible. Staff will provide an update on the future of Slow Streets as part of the Council report in Q1 2022 and outline next steps for maintaining a Slow Street network.

Sincerely,

A handwritten signature in blue ink, appearing to read 'Lon LaClaire', with a stylized flourish at the end.

Lon LaClaire, M.Eng., P.Eng.
General Manager, Engineering Services

604.873.7336 | lon.laclaire@vancouver.ca

Appendix A: Summary of Neighbourhood Traffic Management Programs and Initiatives

Resident Requests for Neighbourhood Traffic Management

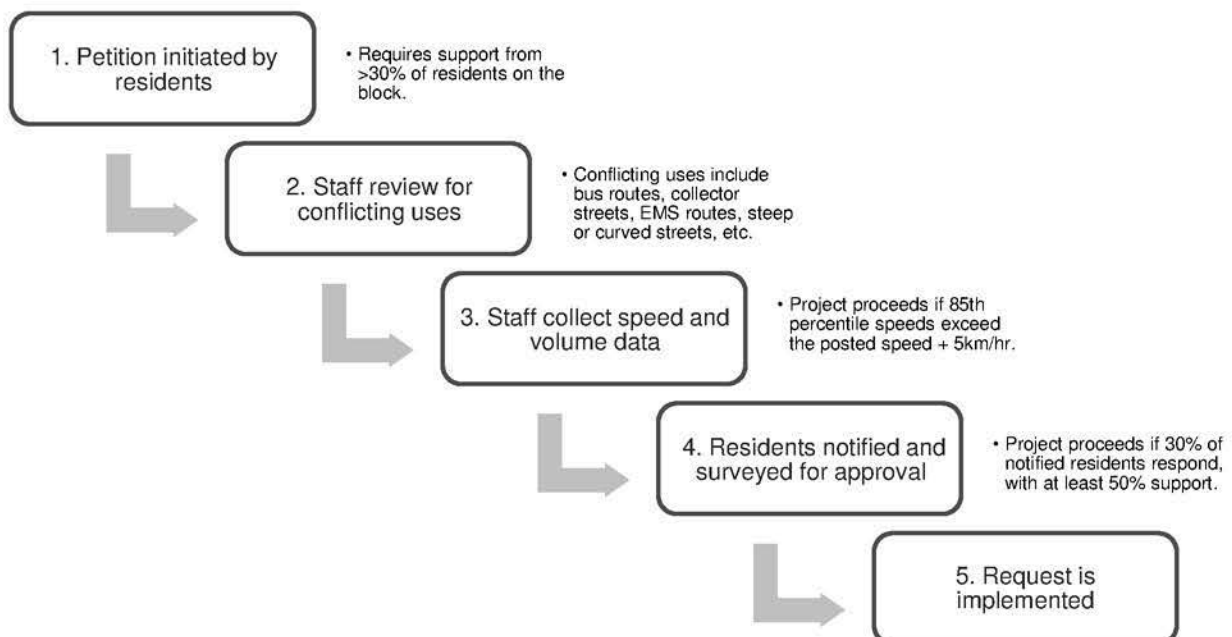
The City receives between 250-450 resident-initiated neighbourhood traffic management cases per year which are primarily received through 3-1-1. Residents request a range of measures, including speed humps, traffic circles, curb bulges, stop signs, full vehicle restrictions and turn bans.

Staff review each request by evaluating existing data, collecting new data, and/or conducting a site visit as necessary. This data and observed traffic behaviour are then compared with conditions on nearby local streets, as well as data from comparable streets in the city. In each case, staff make assessments and implement changes where needed. While changes in the street are not correlated to particular requests, in 2019 there were 111 revisions to signage and pavement markings, which are often completed in response to NTM concerns. This does not include other minor street changes which are often captured as part of larger projects or through other processes.

A number of programs and opportunities exist to implement NTM measures in the City.

Speed Hump Program

The *Speed Hump Program* allows residents to request speed humps on their block via petition. Projects are approved if the data shows that speed humps are warranted, and sufficient neighbourhood support exists. The approval process is detailed in the diagram below:



The Program has a \$250,000 annual budget which typically allows for speed humps to be built on 20 to 30 blocks. In recent years, locations for speed humps that align with City priorities for traffic calming around schools and parks have been prioritized. In 2020, the city received 11 neighbourhood-initiated requests, but none met the criteria for implementation. There are currently 10 resident-initiated speed hump requests under review.

Local Improvement Program (LIP)

The *Local Improvement Program* allows residents to request and fund a variety of street improvements to their block. Potential improvements under the program include:

- Lane paving
- Lane lighting
- Traffic circles
- Corner bulges
- Lane speed humps

Requests are initiated via petition, which is followed up by data collection and analysis. Approval is based on the requirements set in the *Local Improvement Procedures Bylaw 3614* and the *Vancouver Charter*. In the last three years the program was active (2017-2019), two instances of laneway speed humps were successfully approved via this process. The program has been paused for 2020 and 2021 due to the COVID-19 pandemic.

Slow Zones and 30km/hr Signage Regulations

In spring 2021, the City launched a trial 30km/hr 'Slow Zone' in the Grandview-Woodland neighbourhood. Grandview Woodland was identified by staff as the top ranked neighbourhood based on speed, collisions, proportion of vulnerable populations, and number of community amenities. The trial features 30km/hr gateway signs, speed limit signs, and paint markings but did not impact access or parking. Preliminary results of the trial show a small reduction in average speeds of about 1km/hr. Staff will report back with a full summary of results and next steps in 2022.

Staff have been in communication with the Province, and have recently been in discussions with Legal Services regarding signage requirements for a blanket rollout of 30km/hr speed limits on local streets. Discussions are ongoing, and staff will provide an update when more information is available.

Capital Projects + Development Opportunities

Neighbourhood traffic management features are often incorporated into capital projects and off-site improvements delivered through development projects.

School Active Travel Program (SATP)

The SATP works with school communities to improve walking, cycling and rolling infrastructure around schools and to educate and encourage students to use active travel to and from school.

Infrastructure upgrades as part of the program include speed humps, crosswalks, ramps, curb bulges and pedestrian signals. In the 2019 and 2020 years, the program featured:

- School Active Travel Planning at 8 schools (over the two years)
- Walk + Bike + Roll grants for school-led programming at 15 schools
- Walking and cycling education courses for 1,153 grade 6 and 7 students

School Streets

School Streets is a new pilot program that creates a car-free block beside a school during pick-up/drop-off. Three schools were piloted in April/May 2021. Results from the pilots included:

- A reduction in motor vehicle traffic observed on all streets adjacent to schools
- 32% of families reported walking more
- 29% of parents reported driving less

Appendix C – Hastings-Sunrise (Adanac Overpass) Notification Letter

IMPORTANT INFORMATION

Please have this translated

RENSEIGNEMENTS IMPORTANTS

Prière de les faire traduire

重要資訊 請找人為你翻譯

重要资讯 请找人为你翻译

MAHALAGANG KAALAMAN

Mangyaring isalin ito

ਜ਼ਰੂਰੀ ਜਾਣਕਾਰੀ

ਕਿਰਪਾ ਕਰਕੇ ਕਿਸੇ ਕੋਲੋਂ ਇਸ ਦਾ ਉਲਥਾ ਕਰਵਾਓ

TIN TỨC QUAN TRỌNG

Xin hãy dịch sang tiếng Việt

INFORMACIÓN IMPORTANTE

Busque a alguien que le traduzca

중요정보 번역해주세요

اطلاعات مهم لطفاً درخواست کنید
این اطلاعات را برای شما ترجمه کنند

TCH | SCH | Vietnamese translations available on additional page.

March 10, 2023

Re: Hastings-Sunrise (Adanac Overpass) Traffic Calming

Dear Community Member,

The City's new Neighbourhood Traffic Management Program is prioritizing the Adanac Overpass area to address longstanding traffic concerns. Building on previous community feedback, the program aims to engage the community in assessing, designing and implementing quick-build traffic calming measures. These measures will help address neighbourhood traffic challenges, such as high vehicle volumes and speeds. The program area is bounded by Renfrew Street, East Hastings Street, Boundary Road and East 1st Avenue as shown in Figure 1 on the next page.

Share your feedback!

We invite you to participate in the first of a two-phase engagement process. In this phase, we are inviting you to help us confirm the core issues and opportunities for traffic calming in your neighbourhood.

Virtual Workshops

We will be hosting virtual workshops to learn more from community members about vehicle volume and speed issues and share our approach to traffic calming on the following dates:

- Tuesday, April 4, 6:30 – 8:00 pm
- Wednesday, April 5, 6:30 – 8:00 pm
- Thursday, April 13, 6:30 – 8:00 pm

Survey

You can also share your feedback through our online survey from **Thursday, March 16 to Friday, April 28, 2023**. In advance of the second engagement phase (anticipated later in 2023) we will share what we heard from the survey, workshops, and emails on our Shape Your City project page.

Sign up for a workshop and take the survey at www.shapeyourcity.ca/adanac-overpass

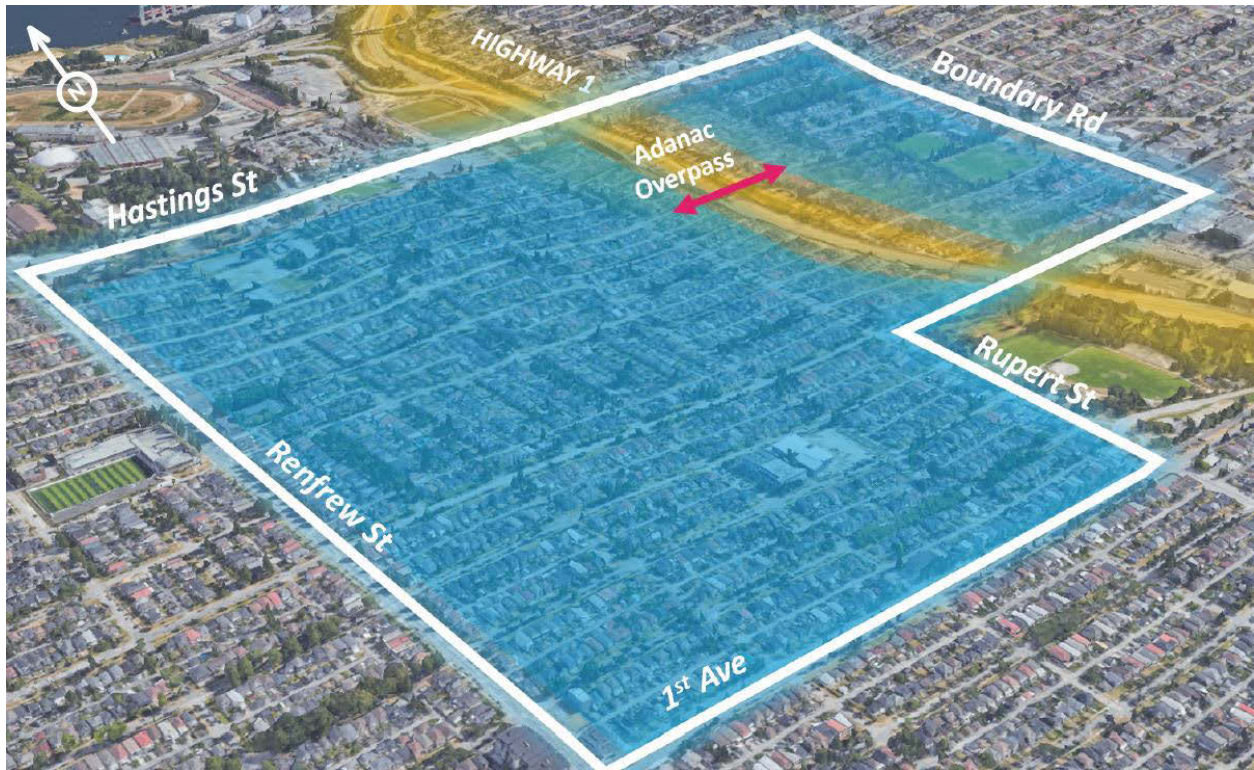


Figure 1: Map of project area

For additional information, please visit: www.shapeyourcity.ca/adanac-overpass

If you have any questions about the project, please contact our team by email at:

- adanac-overpass@vancouver.ca

Hastings-Sunrise Sewer Renewal Project

Please note, you may receive a separate notification letter for upcoming sewer replacement work through the Hastings-Sunrise Sewer Renewal project. Sewer work is tentatively scheduled to start this spring/summer between Rupert and Renfrew along East 1st Avenue, which could impact your neighbourhood and commute. Please watch for signage or learn more by:

- Visiting vancouver.ca/hastings-sunrise-upgrades
- Emailing hastings-sunrise-upgrades@vancouver.ca

We look forward to your participation.

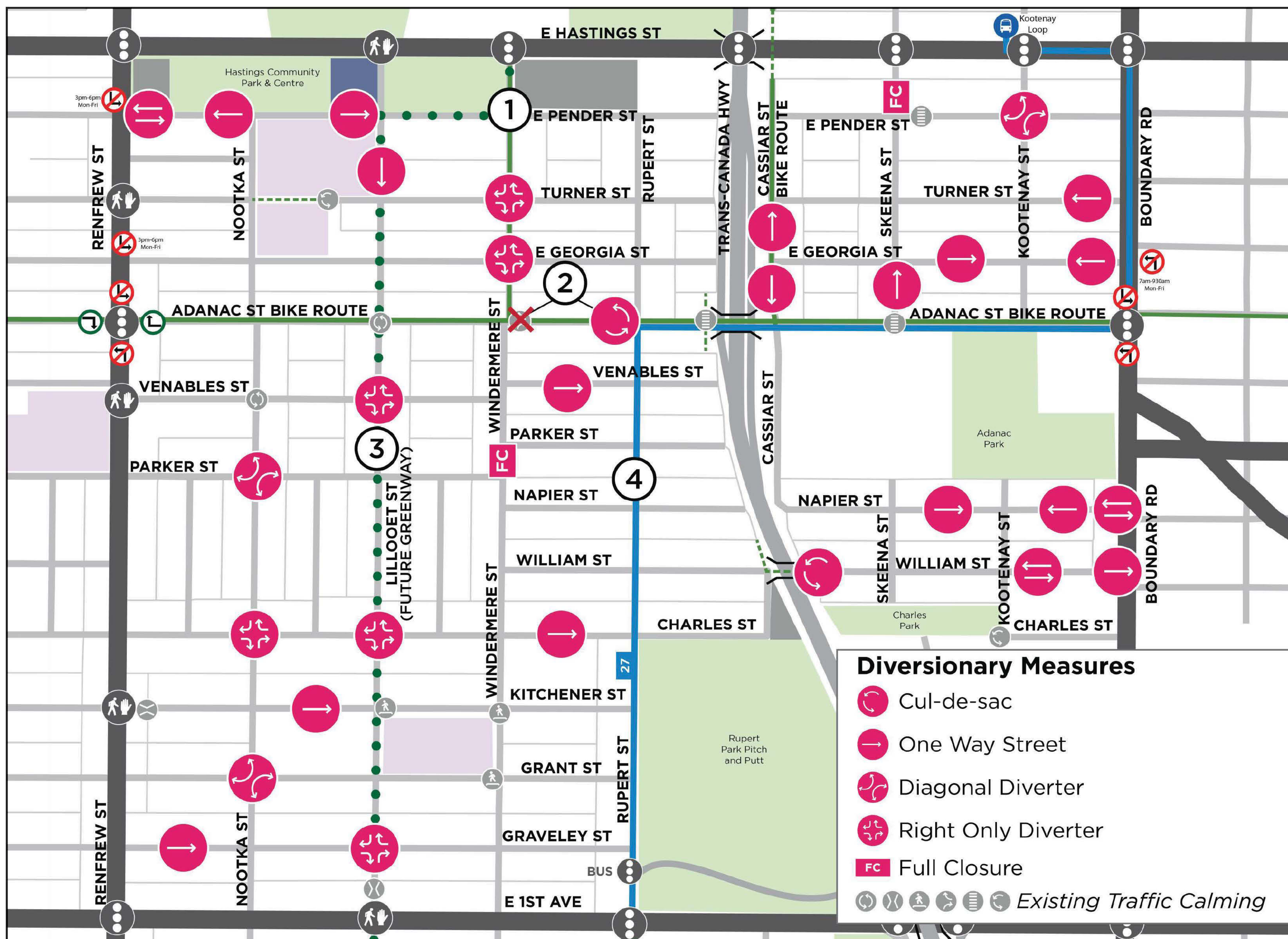
Yours sincerely,

Engineering Services
City of Vancouver

Appendix B – (Plans from Engagement Boards)

4 WHAT WE ARE CONSIDERING BASED ON FEEDBACK

Measures to lower vehicle volumes



Vehicle diversionary measures reduce high vehicle volumes by discouraging drivers from shortcutting along local streets to access the Adanac Overpass or avoid congested intersections. Driving to and from a destination in the neighbourhood will remain under 6 minutes and access to all homes and businesses will be maintained. Key considerations include:

1. Maintain two-way vehicle access from E Hastings St. onto **Lillooet and Windermere St.** to allow access to Hastings Community Centre and the Emergency Operations Centre. Through the design of the Greenway connection to Lillooet St., additional measures at **Windermere and Pender St.** may be required.
2. Remove diverter at **Windermere St.** and replace with cul-de-sac at Rupert St. (see Board 7 for details).
3. Direct vehicles away from **Lillooet St.**, a future greenway route. Lowering vehicle volumes will improve comfort for people walking and biking, particularly near two neighbourhood schools.
4. Direct drivers onto **Rupert St.** when accessing the Adanac Overpass (see Board 5 for additional safety measures). Rupert St. at E 1st Ave. will remain open to southbound vehicles exiting the neighbourhood.

On local streets with higher vehicle volumes, staff are considering interconnected one-way streets with diverters at key intersections to discourage short-cutting. All measures will be built using interim materials (as shown below) to allow for trial and adjustment.



Cul-de-sac



One Way Street



Diagonal Diverter



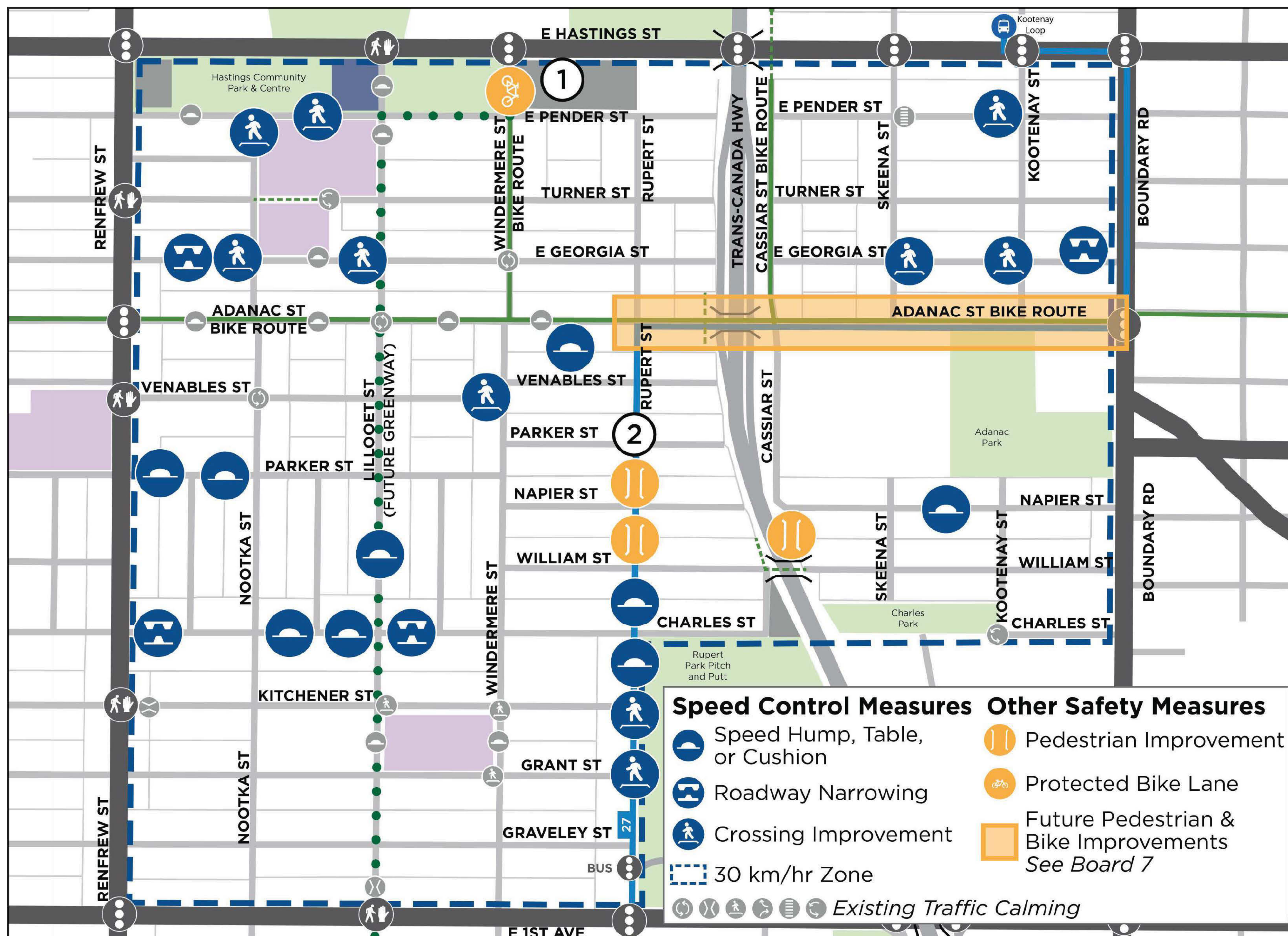
Right-Only Diverter



Full Closure

5 WHAT WE ARE CONSIDERING BASED ON FEEDBACK

Speed control & safety measures



Speed control measures encourage drivers to slow down when using local streets. **Safety improvements** are measures that address safety for people walking, biking and rolling. Key considerations include:

- 1. Windermere St.** - A protected bike lane and improved pedestrian crossings on Windermere St. between E Hastings St. and E Pender St. Vehicle access will not change.
- 2. Rupert St.** - Add speed reduction measures and pedestrian safety improvements on Rupert St., to slow vehicles and improve access to Rupert Park for people walking.

A new 30km/hr zone will be created within the neighbourhood. On some wider streets, roadway narrowing will support slower vehicle speeds and give a visual clue for drivers to slow down. All measures will be built using interim materials (as shown below) to allow for trial and adjustment.



Speed Hump, Table or Cushion



Roadway Narrowing



Crossing Improvement



Pedestrian Improvement

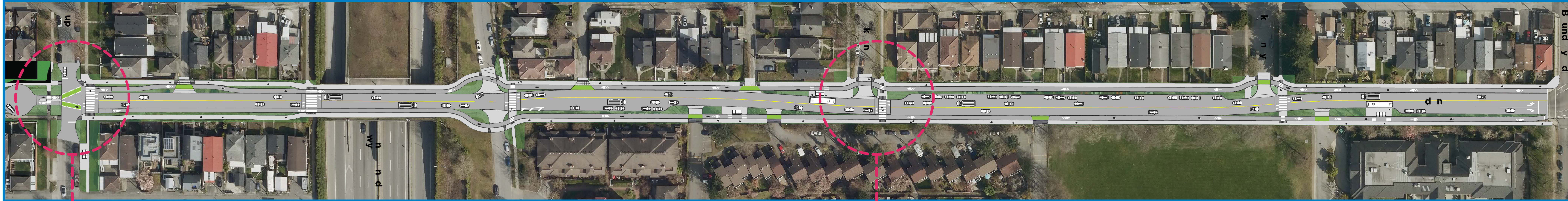


Protected Bike Lane

8 ADANAC ST. PROPOSED DESIGN

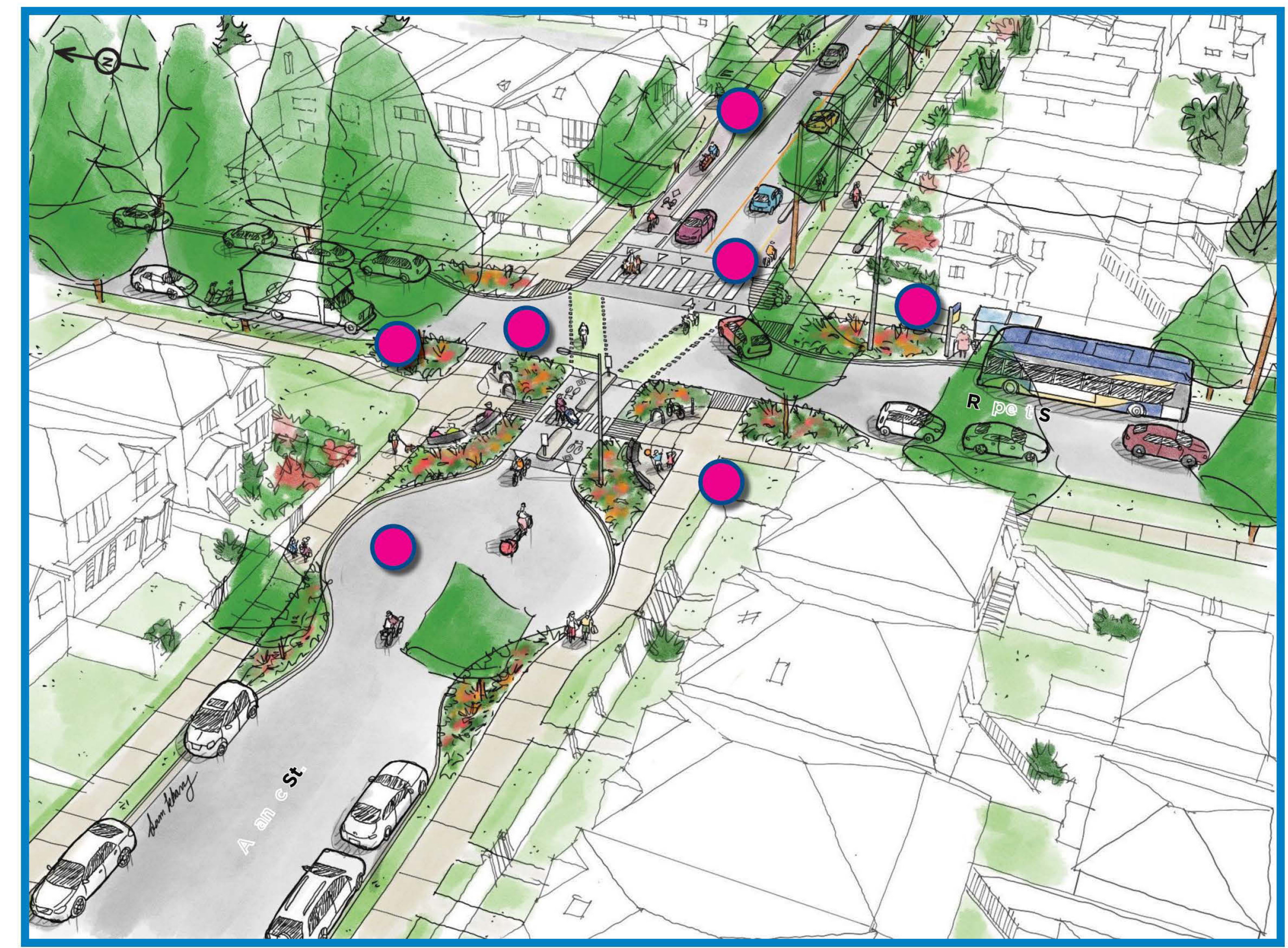
Full build - Adanac St. plan

Keeping the Adanac Overpass open for all modes of transportation influenced the redesign of Adanac St. The design being considered maintains access on the Adanac Overpass for everyone, provides an all-ages and ability (AAA) bike lane, and includes improvements to increase safety and comfort. This full build design of Adanac St. aims to retain parking for adjacent residents. **The full build out of Adanac St. is expected to take place in 2025 and beyond.** As we refine the design, staff will connect with local residents as needed.



Adanac St. at Rupert St.

- New cul-de-sac on Adanac St. at Rupert St.
- Parking changes provide space to serve all transportation modes with the overpass remaining open.
- Improved crossing for people biking on Adanac St.
- Protected bike lane meeting AAA guidelines.
- Raised crossing or crosswalk with speed table.
- Sidewalk separated from moving vehicles increases safety for people walking.
- Relocated transit stop onto Rupert St.



Adanac St. at Skeena St.

- Improved transit stops for safety and comfort.
- Parking changes provide space to serve all transportation modes with the overpass remaining open.
- Better sidewalk separation from moving vehicles increases safety for people walking.
- Protected bike lane meeting AAA guidelines.
- Raised crossings at Adanac St. & Skeena St. help improve speed control and visibility.
- Continuous sidewalk and bike lane to reinforce priority along Adanac St.

