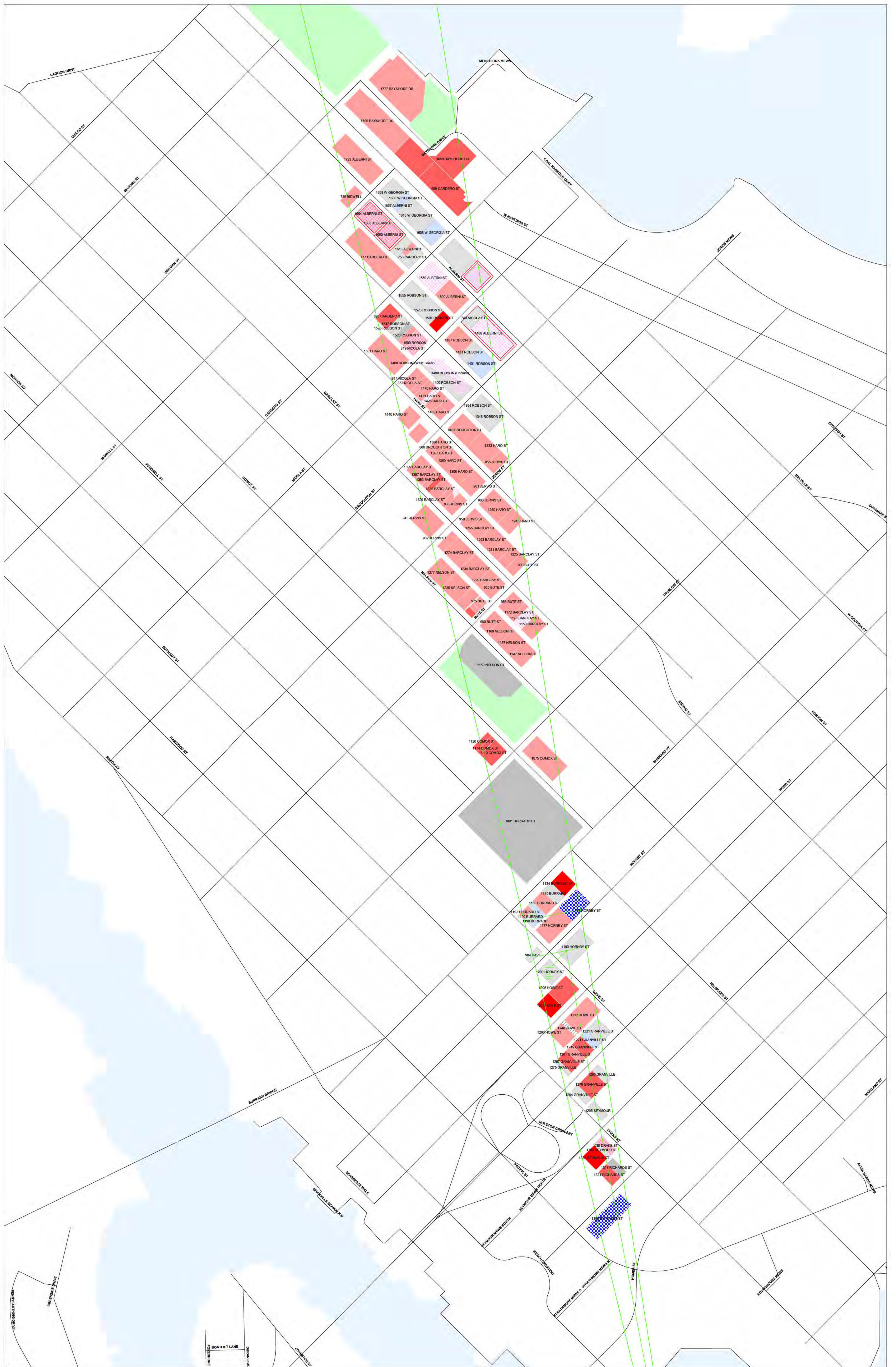
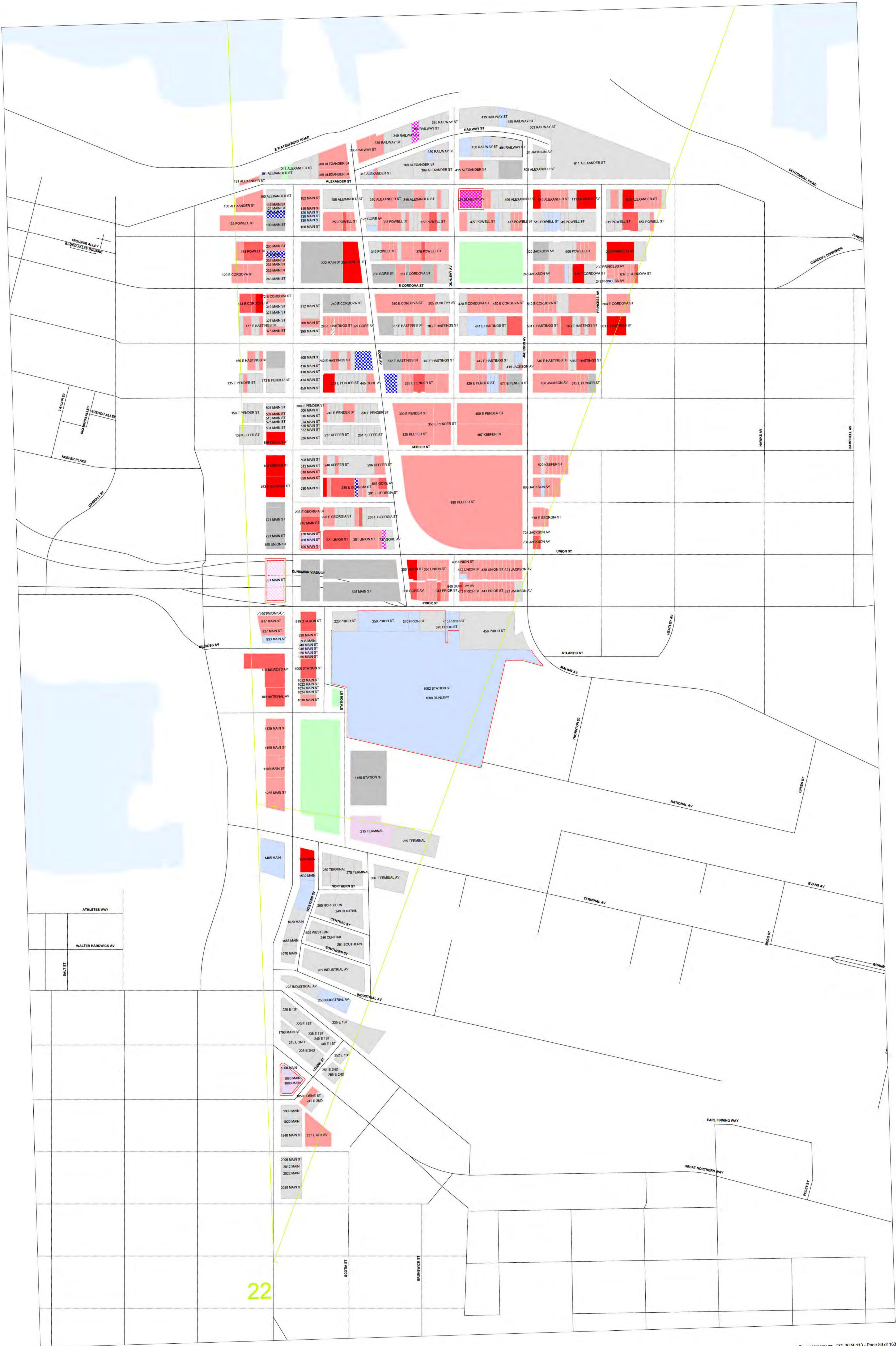
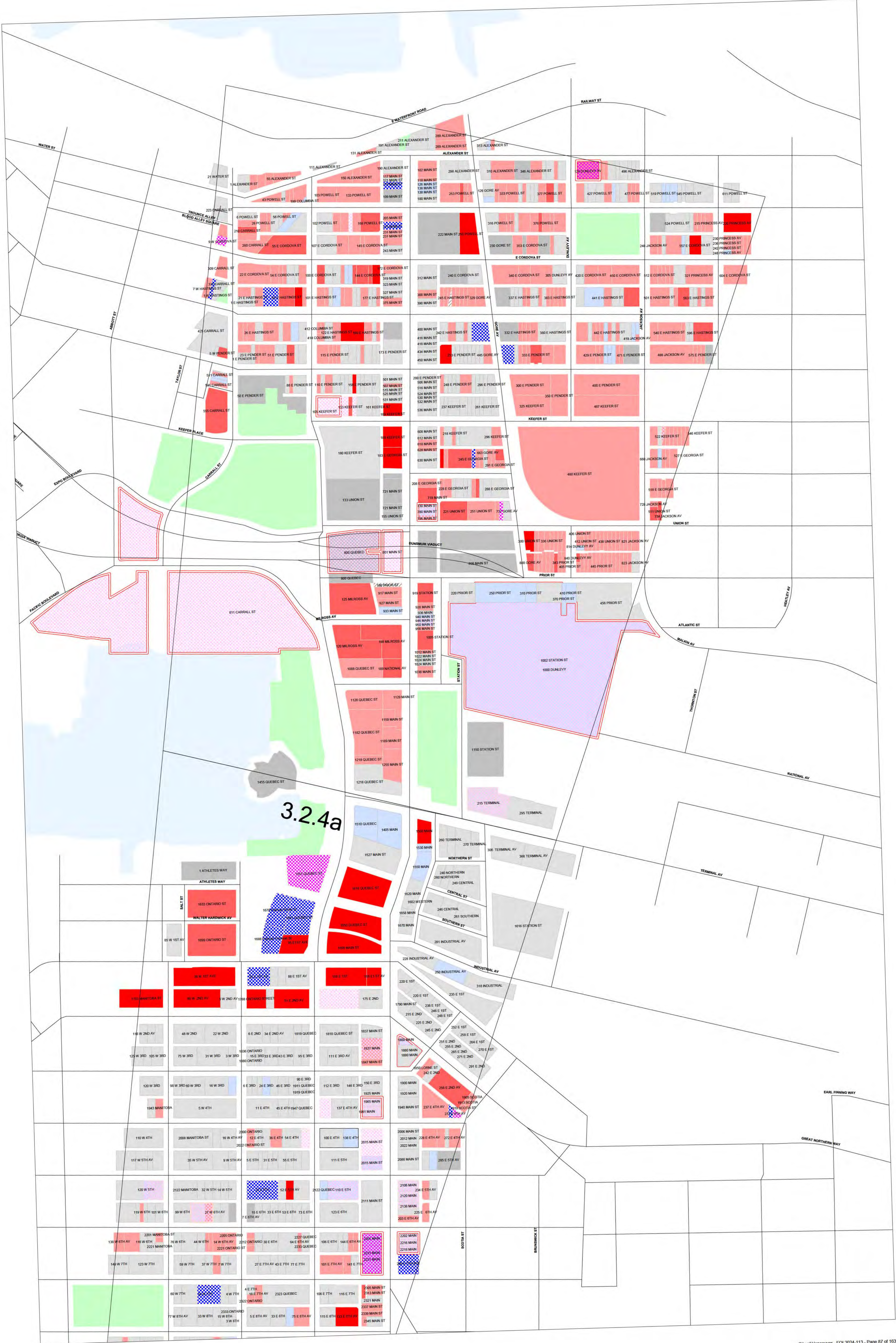


12.1.1





22



3.2.4a



**COMPLETED BEFORE 2001**



**COMPLETED 2001 - 2011**



**COMPLETED SINCE 2011**



**UNDER CONSTRUCTION**



**DEVELOPMENT APPROVED (DE ISSUED, PRIOR TO/ DPB APPR.)**



**PROPOSED (DE REVIEW)**



**NON-RESIDENTIAL**



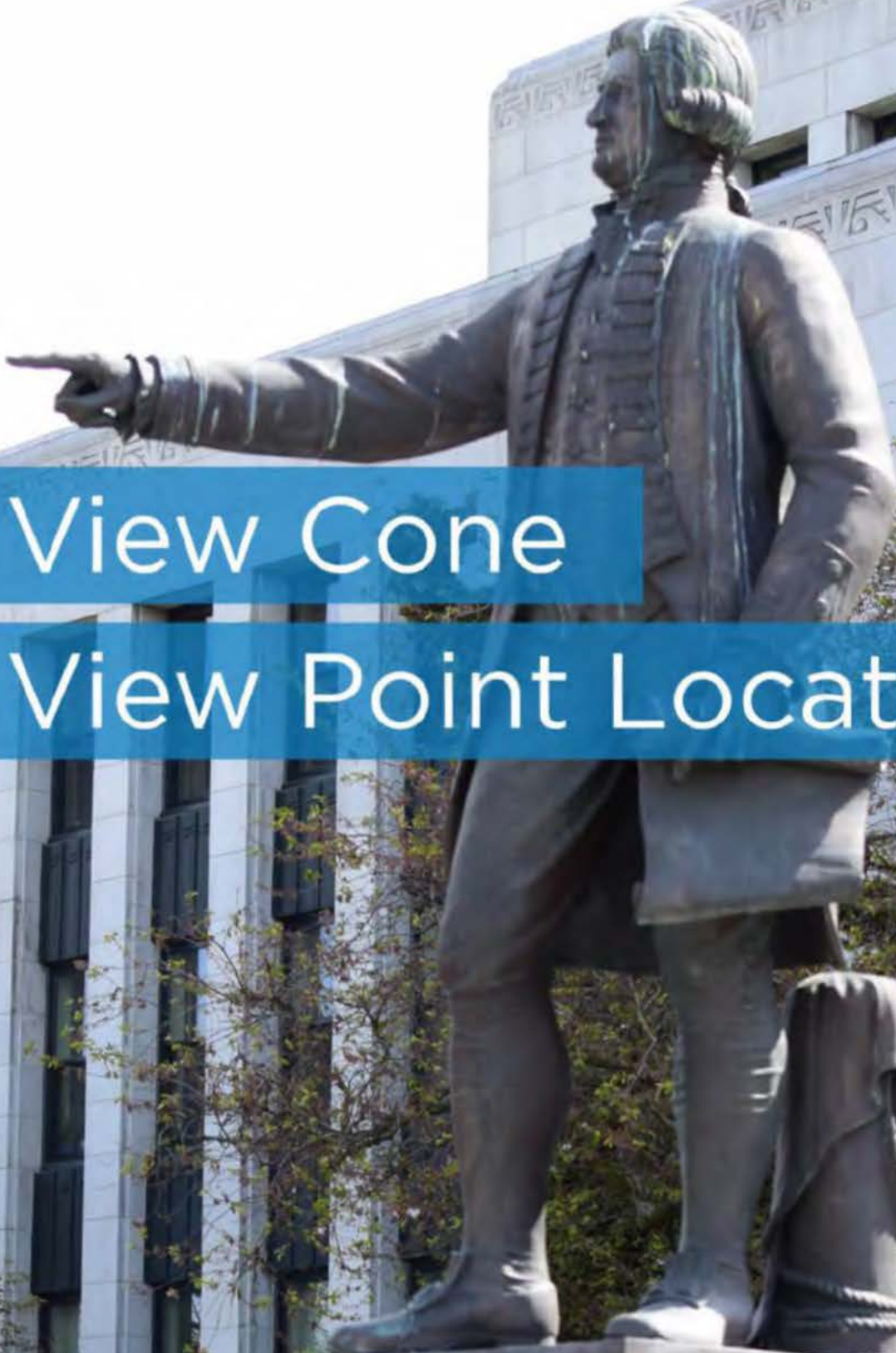
**NON-RESIDENTIAL (INSTITUTIONAL)**



**REZONING (REVIEW, APPROVED)**



**VACANT (not consistently indicated)**



View Cone

View Point Locations

blank



'A' View Point - Seawall below Lamey's Mill Rd and Alder Crossing



**View Cone A**

**View Point:** on Seawall - below Lamey's Mill Road and Alder Crossing

**View Point Elevation:** 4.54m

**View Field:** Mount Seymour



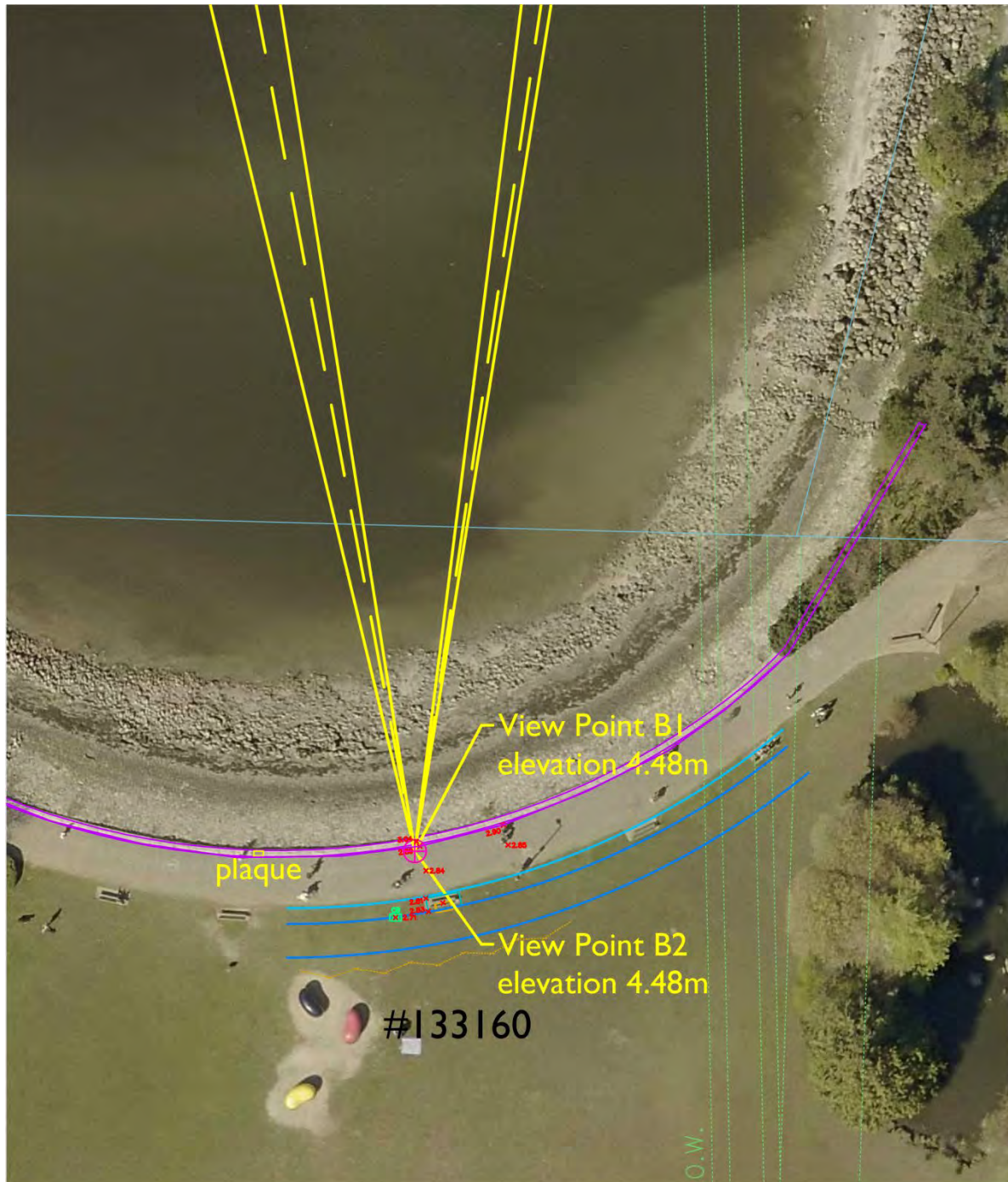
'A' View Point - Seawall below Lamey's Mill Road and Alder Crossing



'A' View Point - Seawall below Lamey's Mill Road and Alder Crossing



'B' View Point - Seawall in Charleson Park (East of dedication plaque)



### View Cones B1 & B2

View Point: on Seawall in Charleson Park  
(East of dedication plaque)

View Point Elevation: 4.48m

View Field: Lions, Crown & Grouse Mountains



UDDP\View Cones\2017\View Cones 2017 Data Set i.dwg

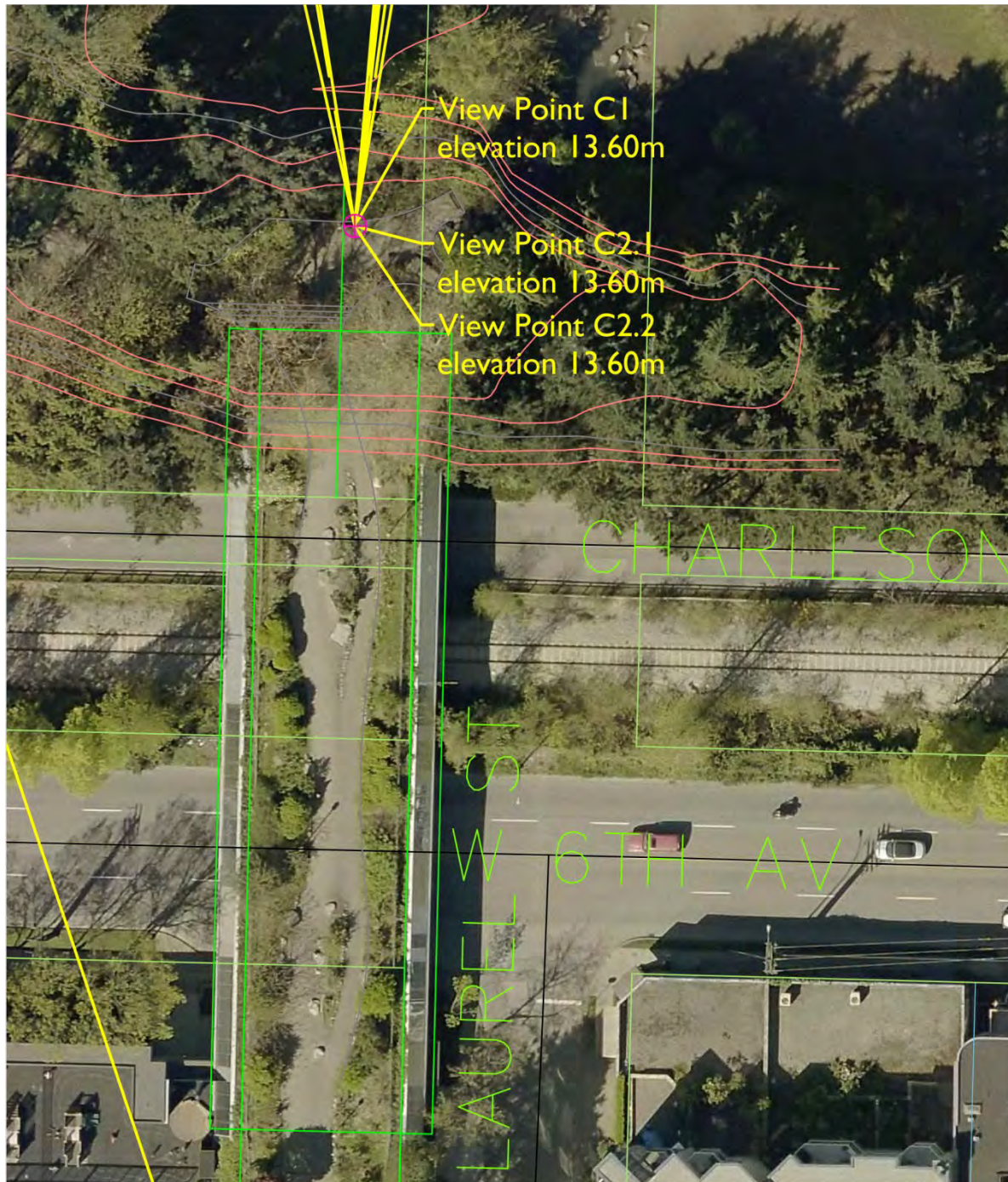
'B' View Point - Seawall in Charleson Park (East of dedication plaque)



'B' View Point - Seawall in Charleson Park (East of dedication plaque)



'C' View Point - lookout in Charleson Park at North end of Laurel Land Bridge



### View Cones C1 & C2

View Point: Lookout in Charleson Park at North end of Laurel Land Bridge

View Point Elevation: 13.60m

View Field: Lions, Crown & Grouse Mountains



UDDP\View Cones\2017\View Cones 2017 Data Set i.dwg

'C' View Point - lookout in Charleson Park at North end of Laurel Land Bridge

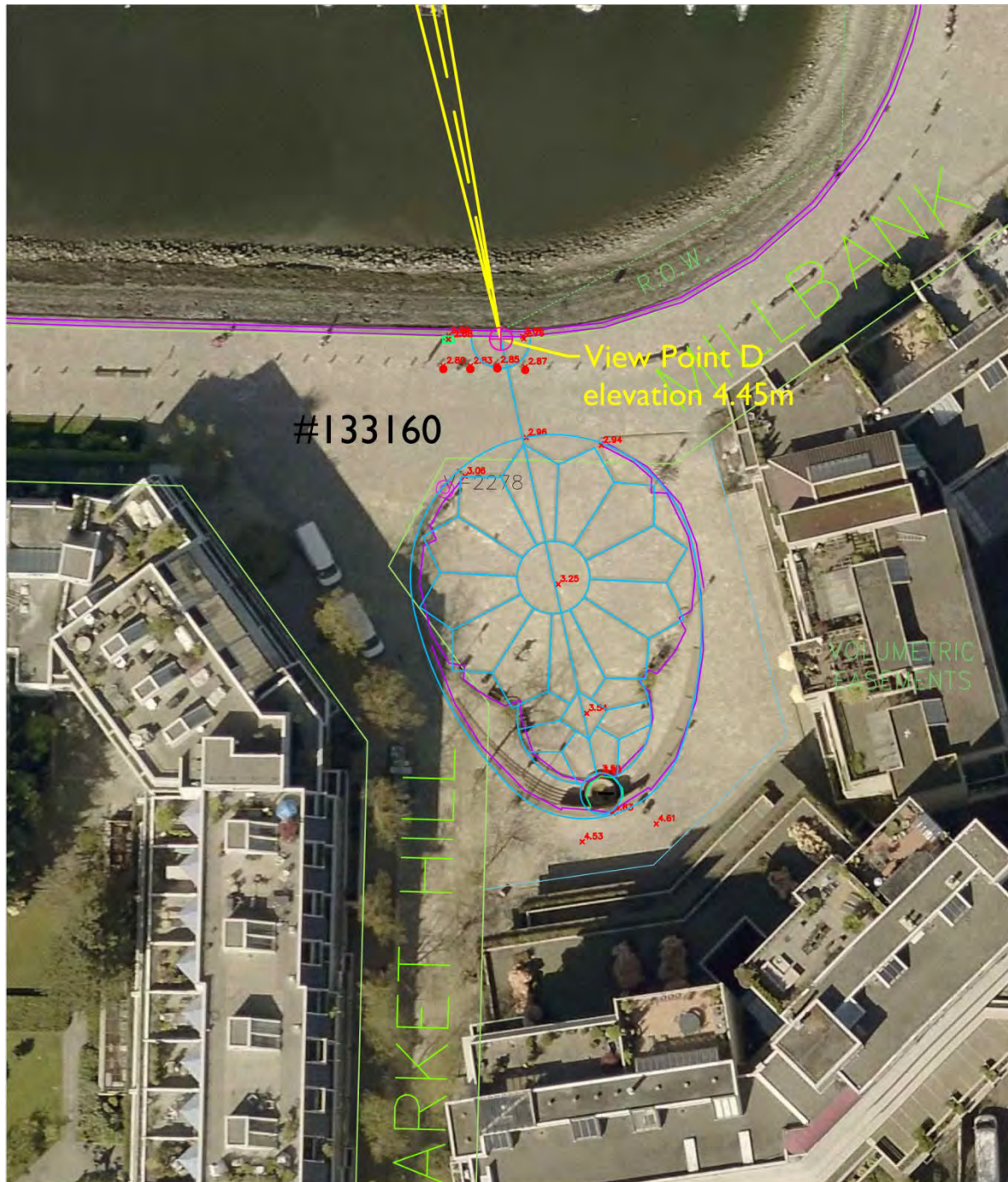




'C' View Point - lookout in Charleson Park at North end of Laurel Land Bridge



'D' View Point - Seawall at Leg and Boot Square



### View Cone D

View Point: on Seawall in Leg-in-Boot Square

View Point Elevation: 4.45m

View Field: The Lions



UDDP\View Cones\2017\View Cones 2017 Data Set i.dwg

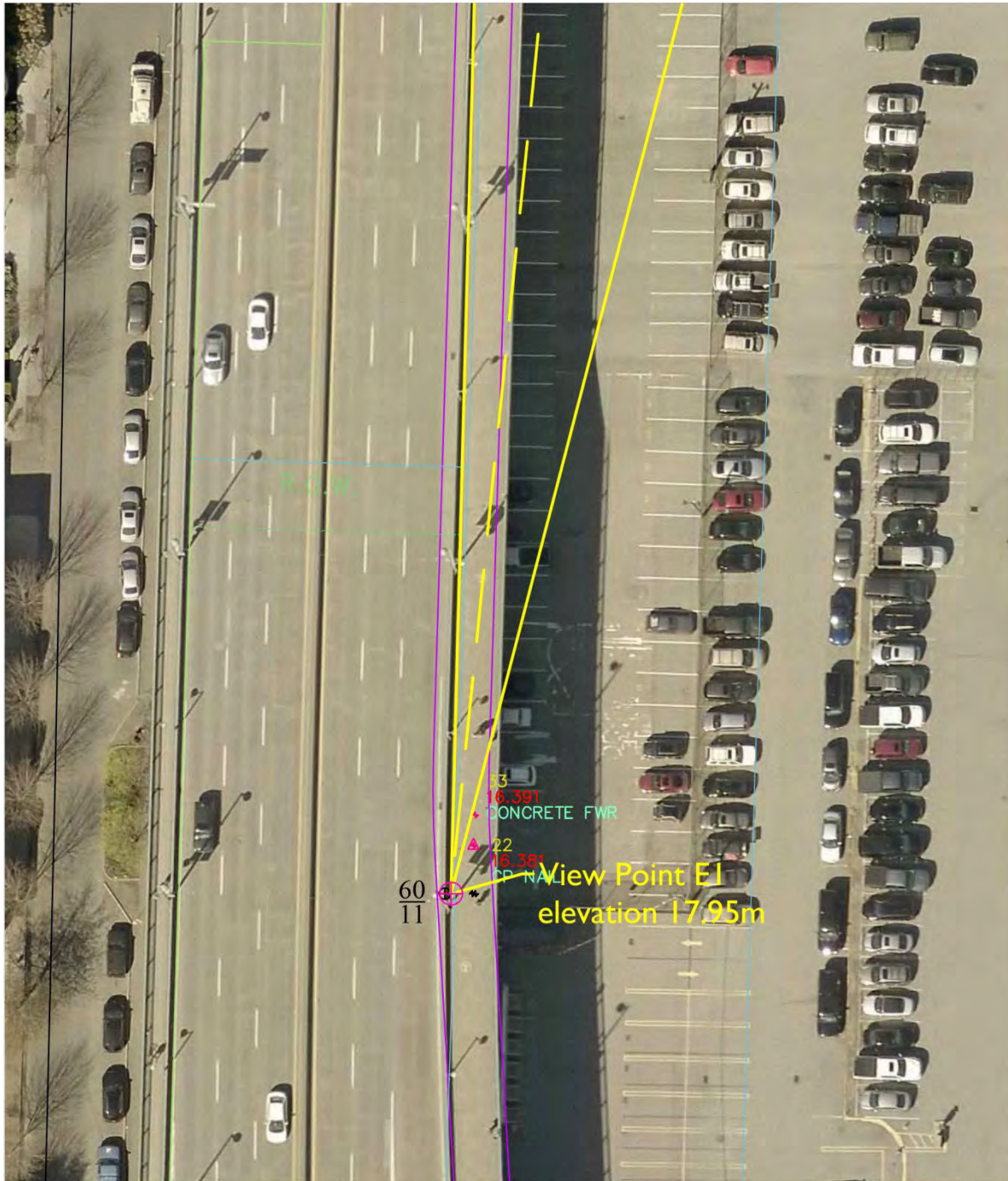
'D' View Point - Seawall at Leg and Boot Square



'D' View Point - Seawall at Leg and Boot Square



'E1' View Point - East sidewalk of Cambie Bridge at pole #60/11



## View Cone E1

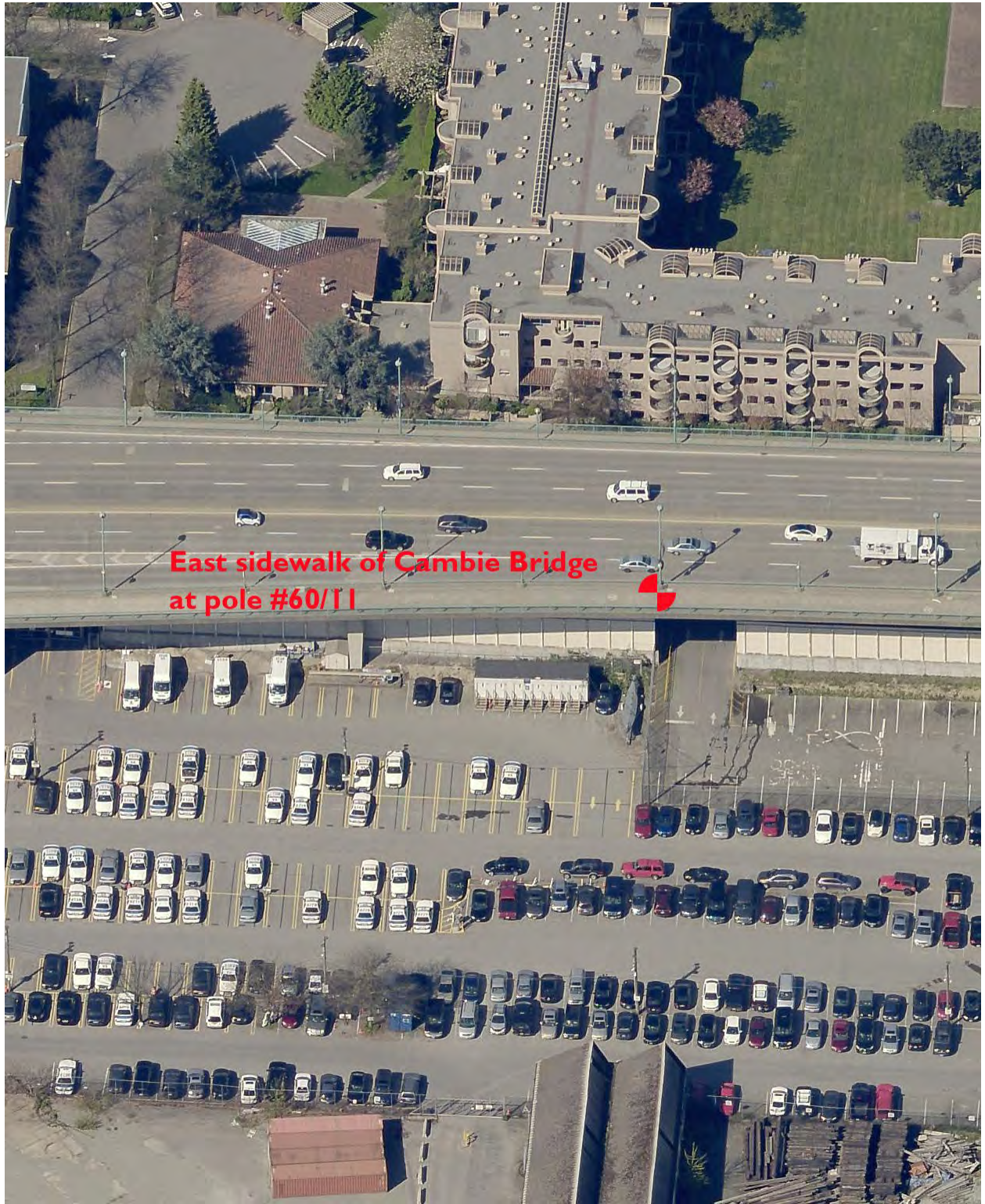
View Point: Cambie Bridge East sidewalk at street light pole 60/11

View Point Elevation: 17.95m

View Field: Crown & Grouse Mountains

UDDP\View Cones\2017\View Cones 2017 Data Set i.dwg

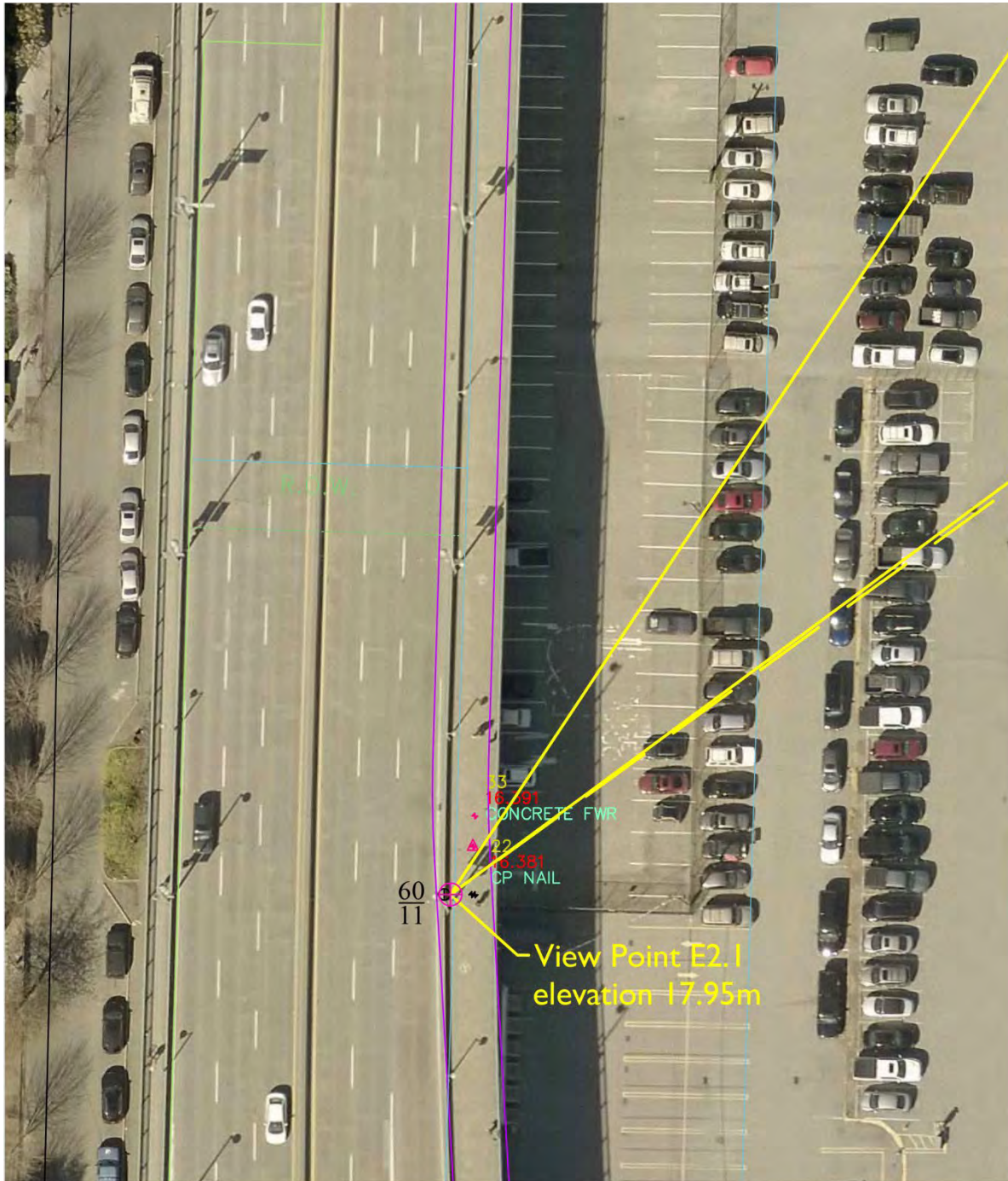
'E1' View Point - East sidewalk of Cambie Bridge at pole #60/11



'E1' View Point - East sidewalk of Cambie Bridge at pole #60/11



'E2.1' View Point - East sidewalk of Cambie Bridge at pole #60/11



### View Cone E2.1

View Point: Cambie Bridge East sidewalk at street light pole 60/11

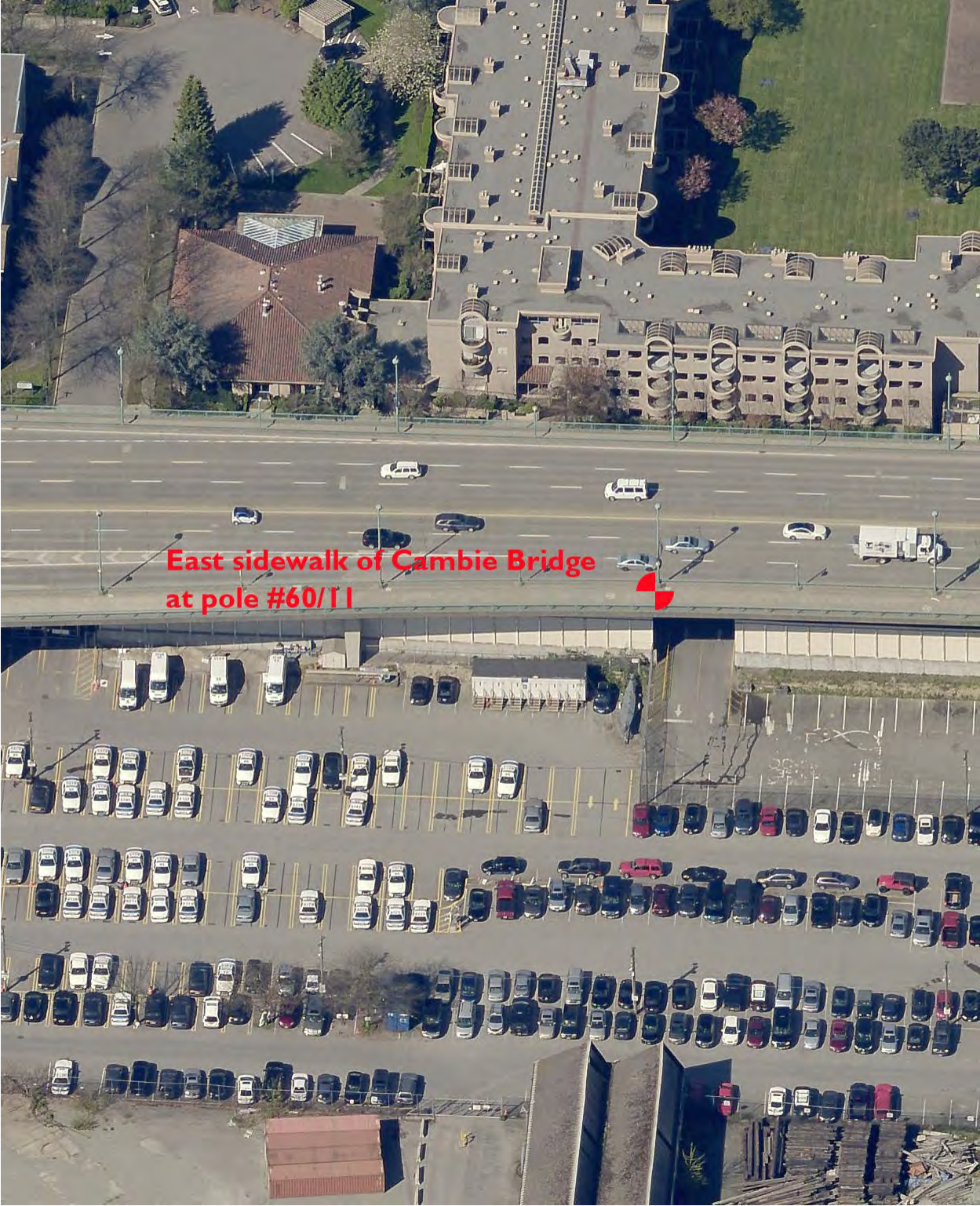
View Point Elevation: 17.95m

View Field: Mount Seymour

UDDP\View Cones\2017\View Cones 2017 Data Set i.dwg



'E2.1' View Point -



'E2.1' View Point - East sidewalk of Cambie Bridge at pole #60/11



'E2.2' View Point - East sidewalk of Cambie Bridge at pole #40/11



### View Cone E2.2

View Point: Cambie Bridge East sidewalk at street light pole 40/11

View Point Elevation: 18.97m

View Field: Mount Seymour

UDDP\View Cones\2017\View Cones 2017 Data Set i.dwg

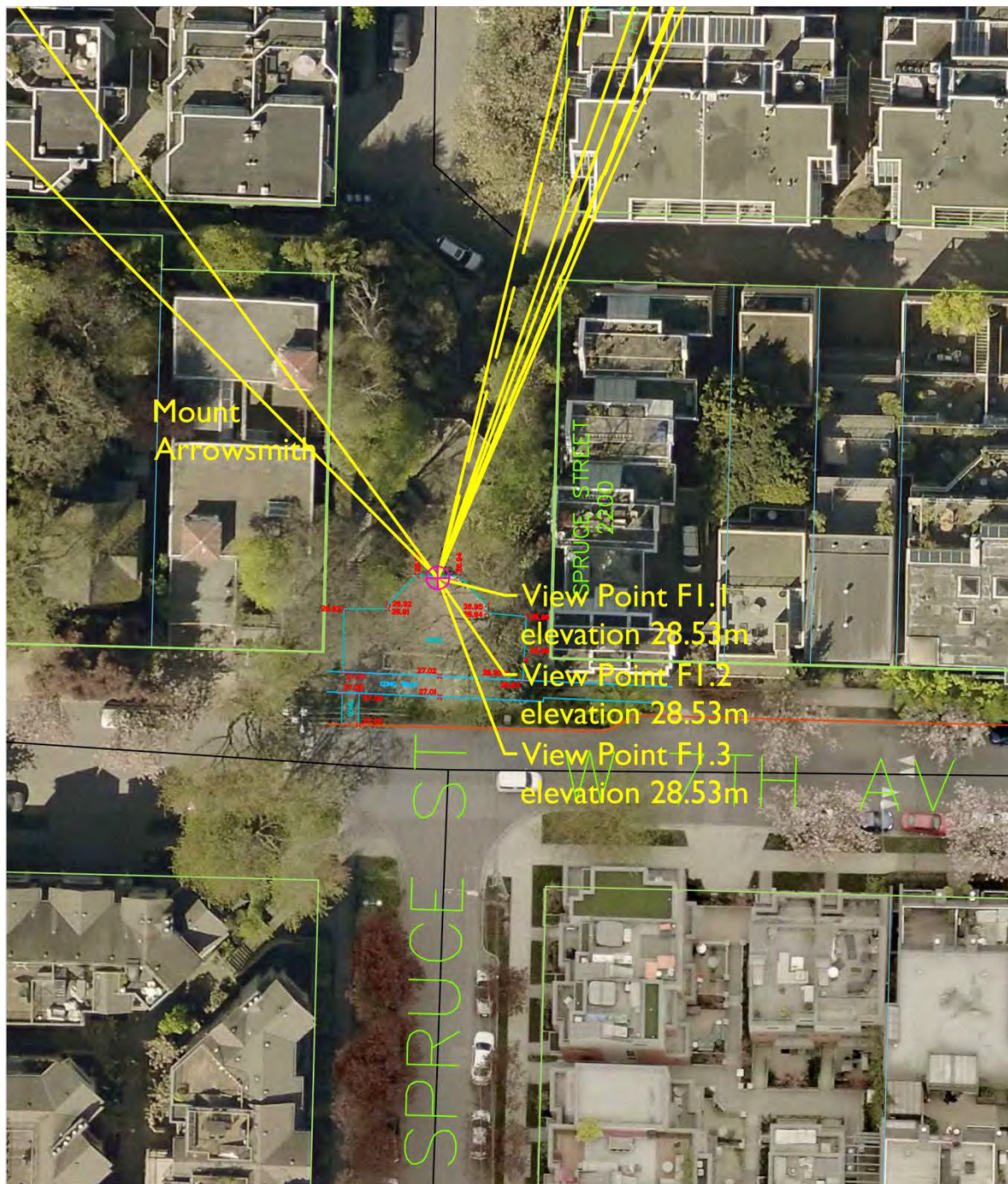
'E2.2' View Point - East sidewalk of Cambie Bridge at pole #40/11



'E2.2' View Point - East sidewalk of Cambie Bridge at pole #40/11



'F' View Point - Choklit Park - W 7<sup>th</sup> Avenue and Spruce Street



### View Cone F

View Point: Upper Plaza in Choklit Park -  
W 7th Avenue and Spruce Street

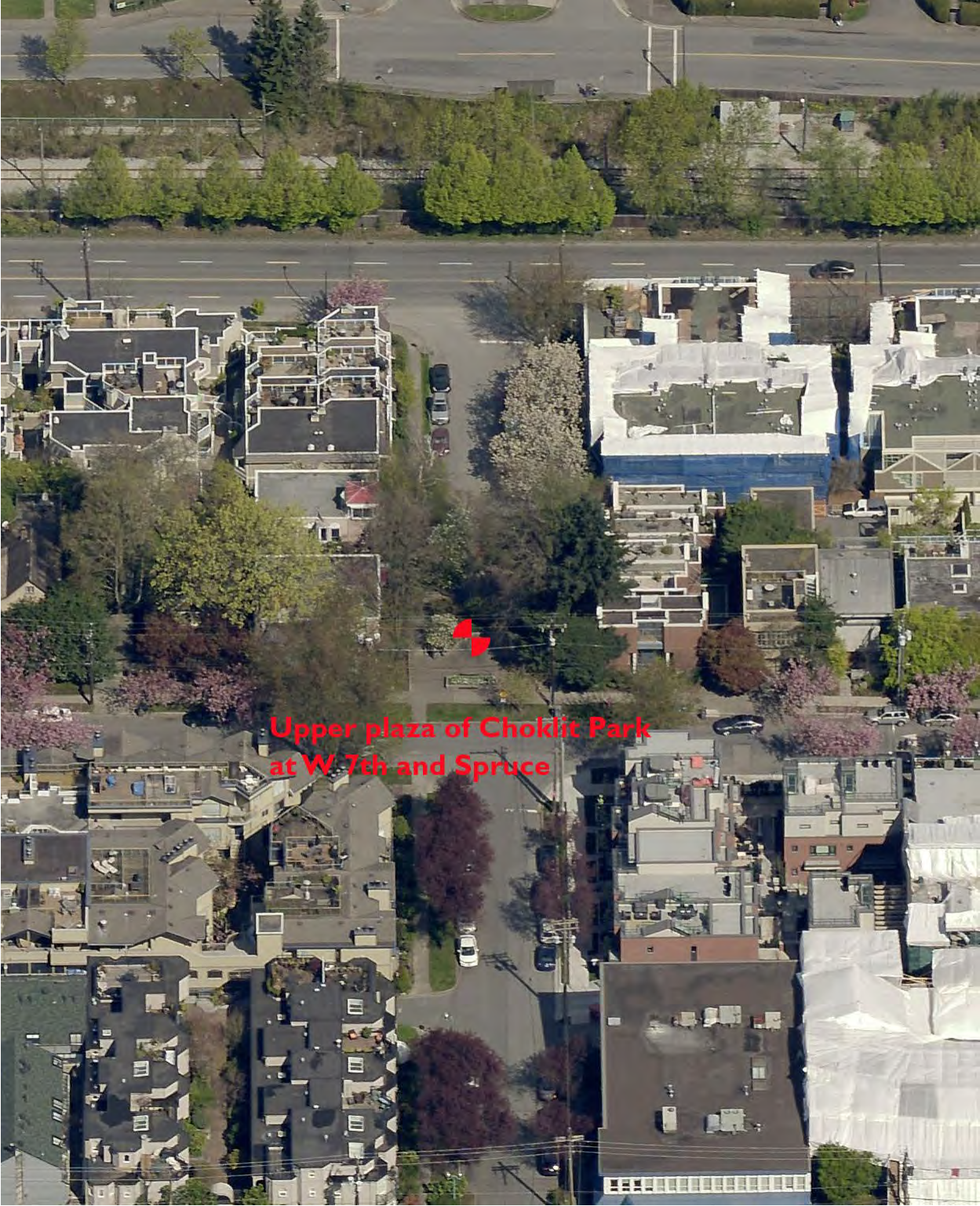
View Point Elevation: 28.53m

View Field: Grouse Mountain & Mount Fromme



UDDP\View Cones\2017\View Cones 2017 Data Set i.dwg

'F' View Point - Choklit Park - W 7<sup>th</sup> Avenue and Spruce Street

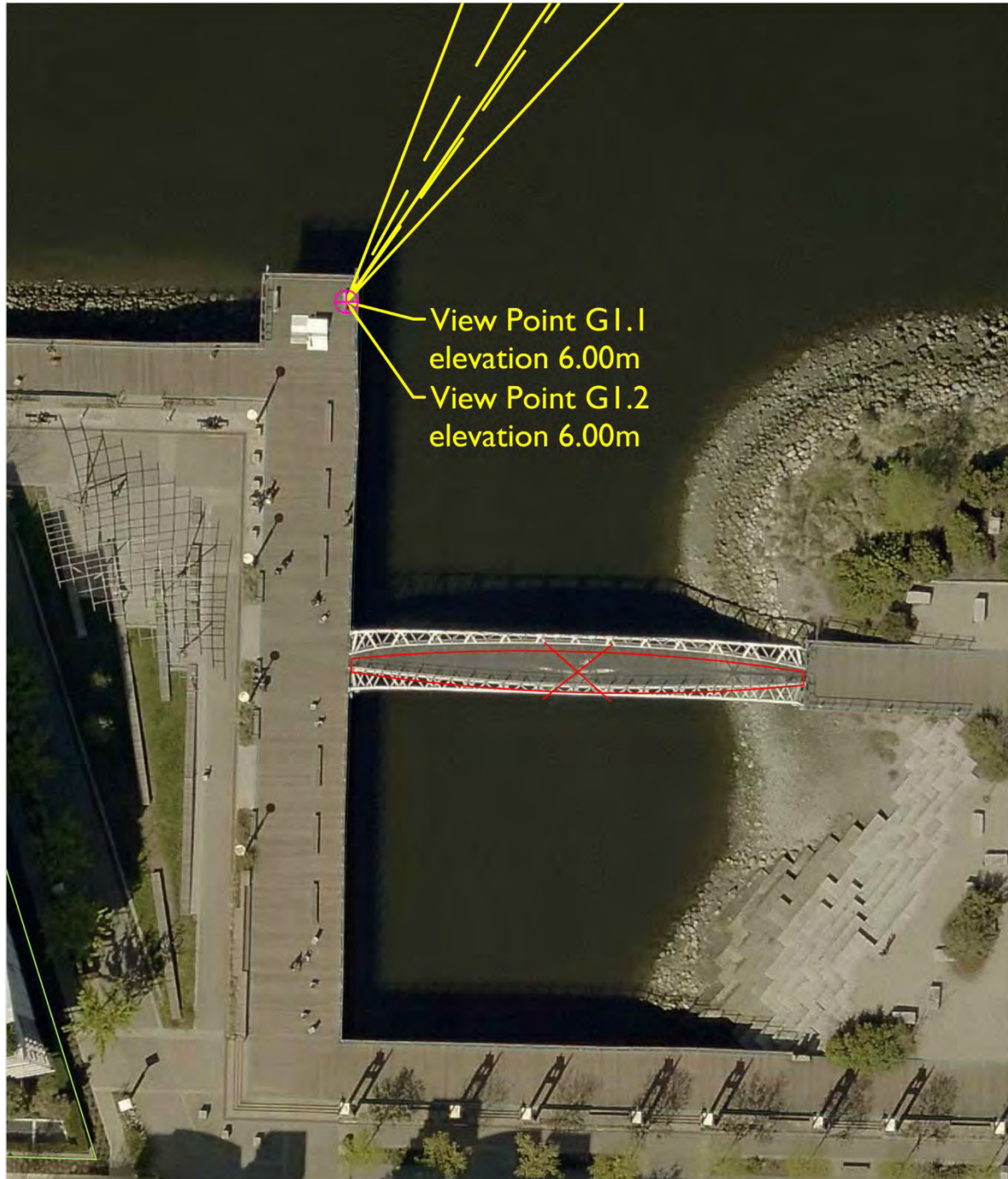


'F' View Point - Choklit Park - W 7<sup>th</sup> Avenue and Spruce Street





'G' View Point - Olympic Village - North end of Shipyard Pier



View Point G1.1  
elevation 6.00m  
View Point G1.2  
elevation 6.00m



### View Cone G

View Point: Olympic Village - North end of Shipyard Pier

View Point Elevation: 6.00m

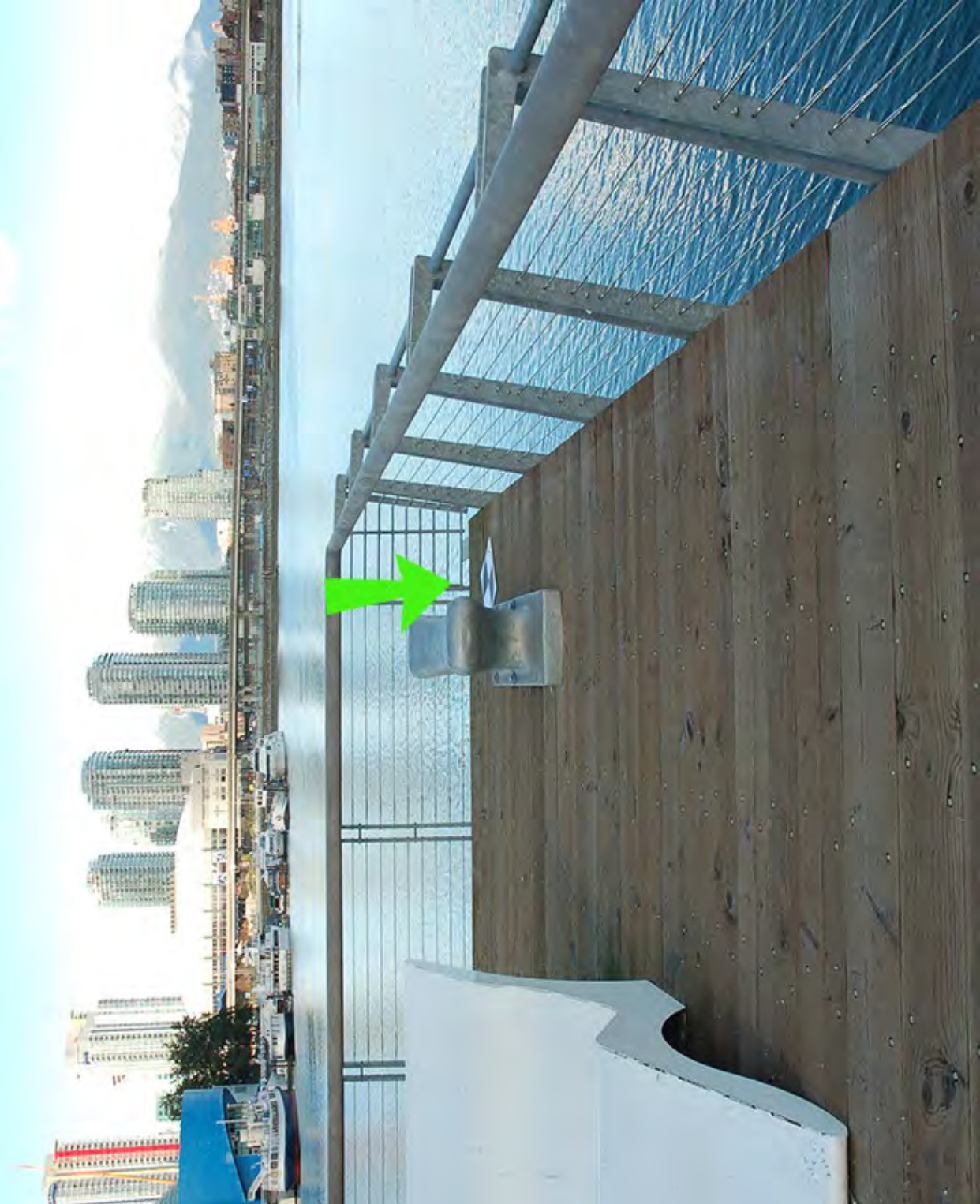
View Field: North Shore Mountains

UDDP\View Cones\2017\View Cones 2017 Data Set i.dwg

'G' View Point - Olympic Village - North end of Shipyard Pier



'G' View Point - Olympic Village - North end of Shipyard Pier



'H' View Point - Olympic Village - Centre of stage in Olympic Plaza



### View Cone H

View Point: Olympic Village - Centre of the stage in the Olympic Plaza

View Point Elevation: 7.20m

View Field: Grouse & the North Shore Mountains



UDDP\View Cones\2017\View Cones 2017 Data Set i.dwg

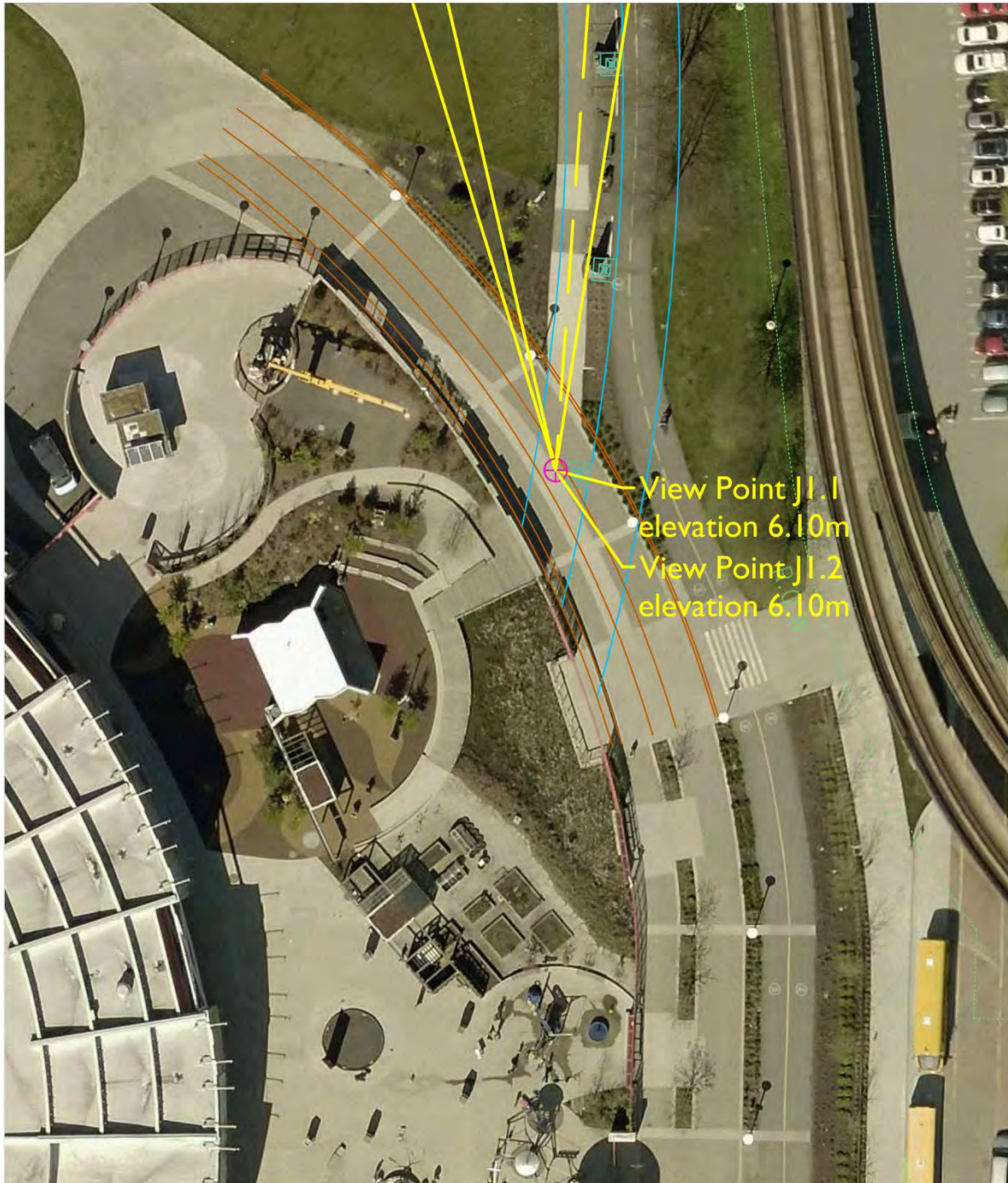
'H' View Point - Olympic Village - Centre of stage in Olympic Plaza



'H' View Point - Olympic Village - Centre of stage in Olympic Plaza



'J' View Point - On path North-east of Science World



## View Cone J

View Point: On path in Creekside Park -  
North-east of Science World

View Point Elevation: 6.10m

View Field: The Lions & North Shore Mountains



UDDP\View Cones\2017\View Cones 2017 Data Set i.dwg

'J' View Point - On path North-east of Science World





'J' View Point - On path North-east of Science World



'3' View Point - Queen Elizabeth Park - Mountain View Lookout Plaza(North of restaurant ~ East of conservatory)



### View Cone 3

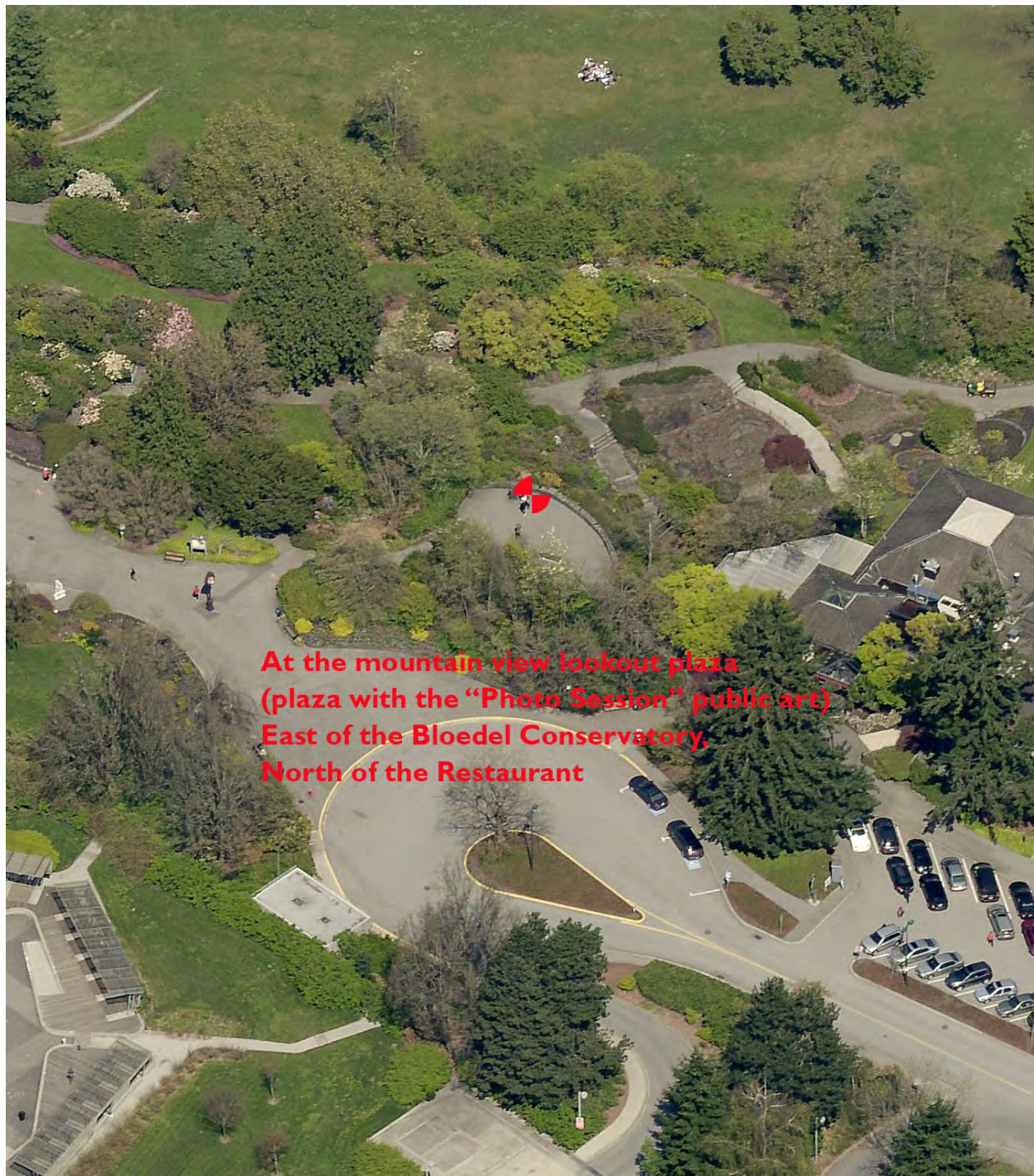
View Point: Mountain lookout in Queen Elizabeth Park - North of Restaurant

View Point Elevation: 124.60m

View Field: Downtown Skyline & North Shore Mtns

UDDP\View Cones\2017\View Cones 2017 Data Set i.dwg

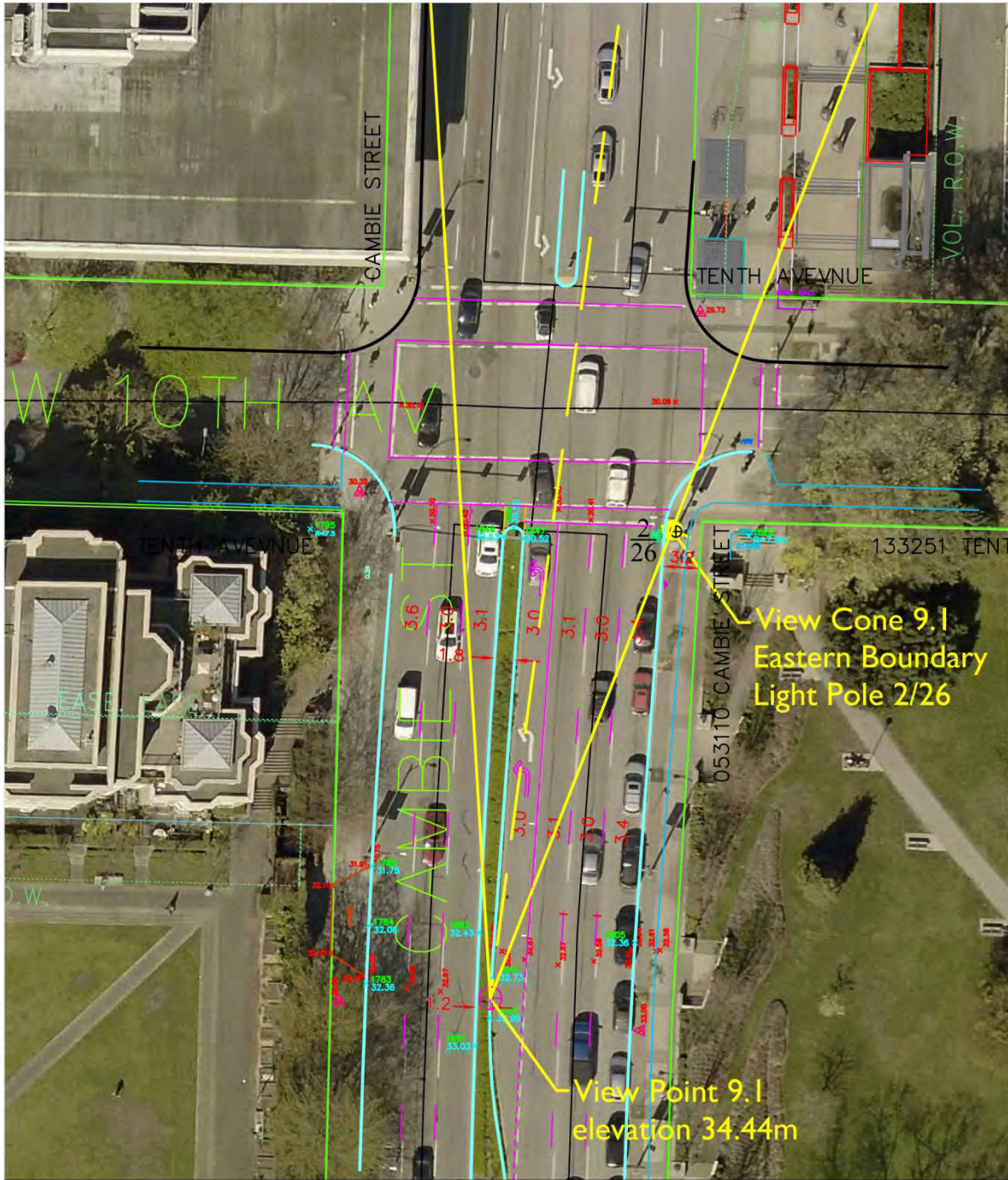
'3' View Point - Queen Elizabeth Park - Mountain View Lookout Plaza(North of restaurant - East of conservatory)



'3' View Point - Queen Elizabeth Park - Mountain View Lookout Plaza(North of restaurant - East of conservatory)



'9.1' View Point - Cambie South of 10<sup>th</sup> Avenue



**View Cone 9.1**

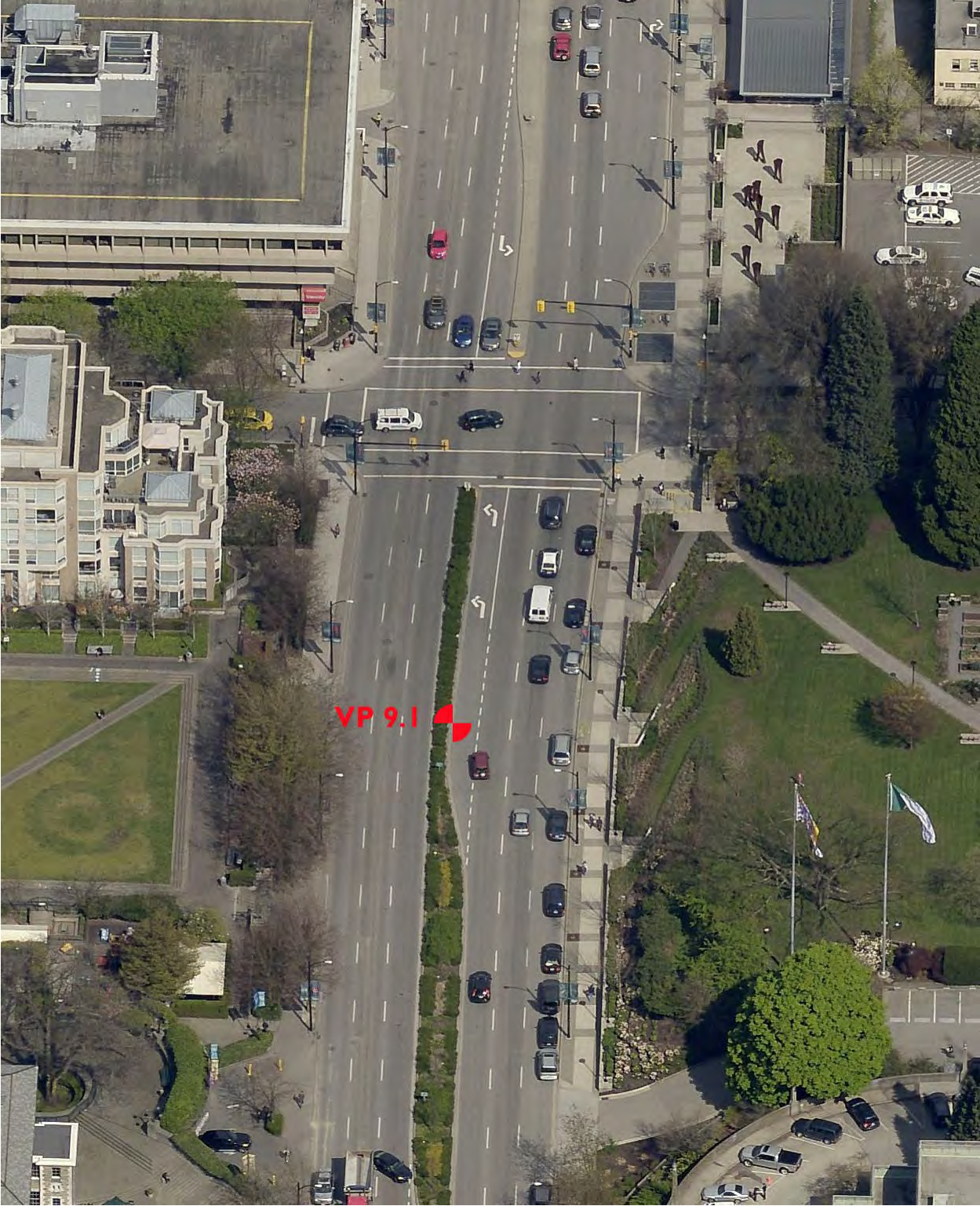
View Point: Cambie Street median between  
E 10th Avenue & E 11th Avenue

View Point Elevation: 34.44m

View Field: North Shore Mountains

UDDP\View Cones\2017\View Cones 2017 Data Set i.dwg

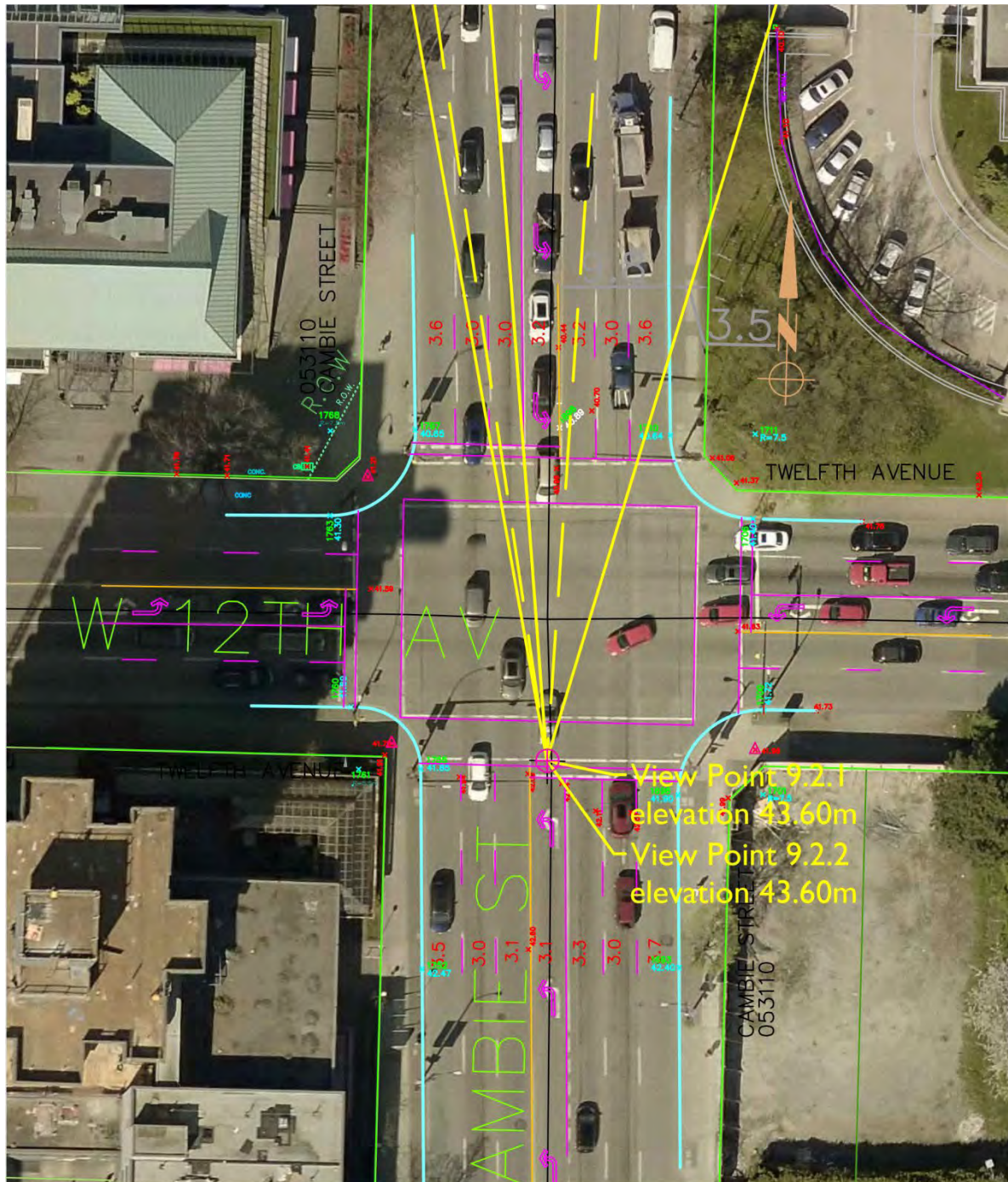
'9.1' View Point - Cambie South of 10<sup>th</sup> Avenue



'9.1' View Point - Cambie South of 10<sup>th</sup> Avenue



'9.2' View Point - Cambie South crosswalk at 12<sup>th</sup> Avenue



### View Cone 9.2

View Point: Cambie Street at 12th Avenue -  
South crosswalk

View Point Elevation: 43.60m

View Field: North Shore Mountains



UDDP\View Cones\2017\View Cones 2017 Data Set i.dwg



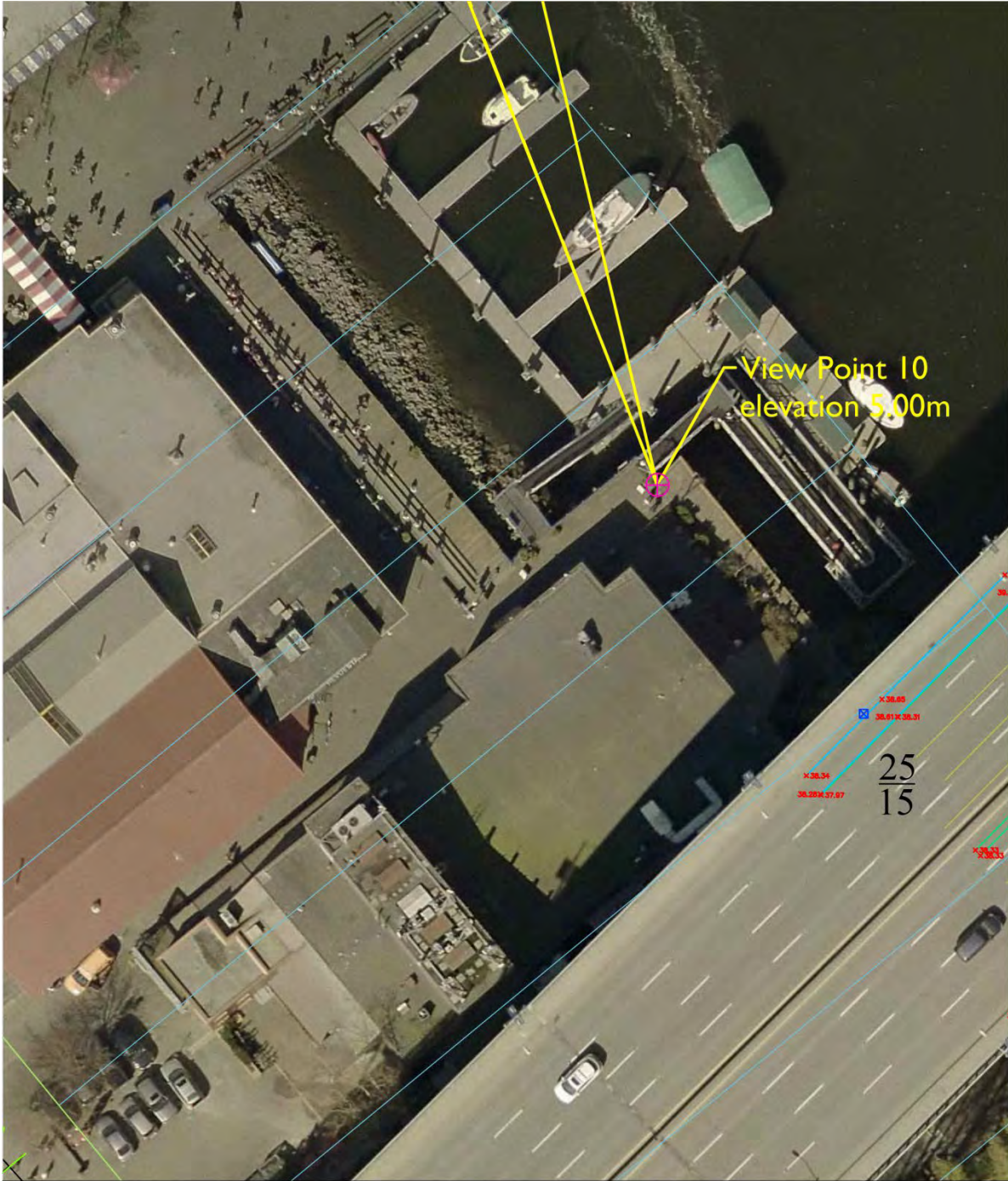
'9.2' View Point - Cambie South crosswalk at 12<sup>th</sup> Avenue



'9.2' View Point - Cambie South crosswalk at 12<sup>th</sup> Avenue



'10' View Point - On boardwalk at the top of the ferry landing Granville Island



## View Cone 10

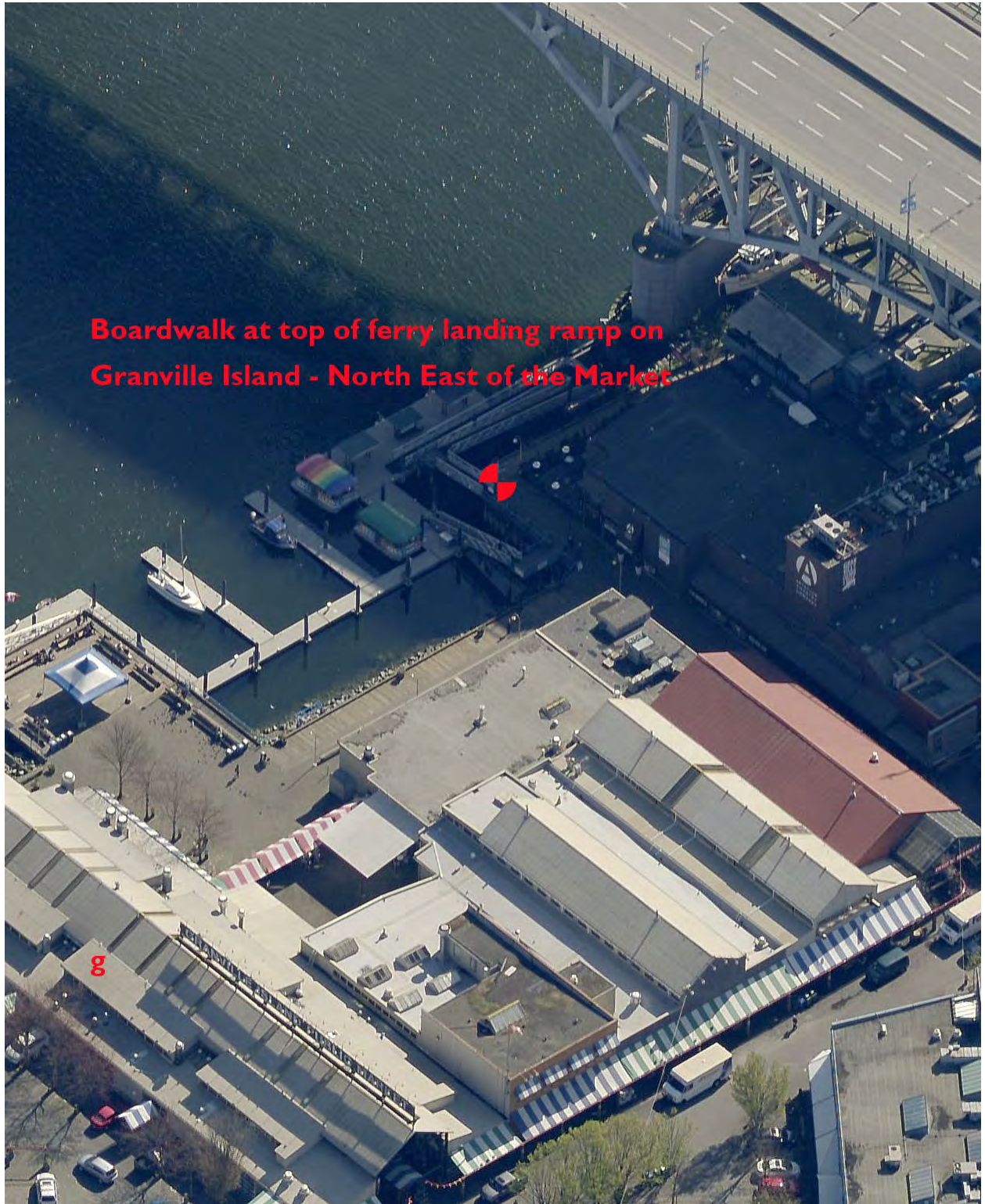
View Point: Boardwalk on Granville Island - North of the Market at top of Seabus Dock

View Point Elevation: 5.00m

View Field: Hollyburn Ridge

UDDP\View Cones\2017\View Cones 2017 Data Set i.dwg

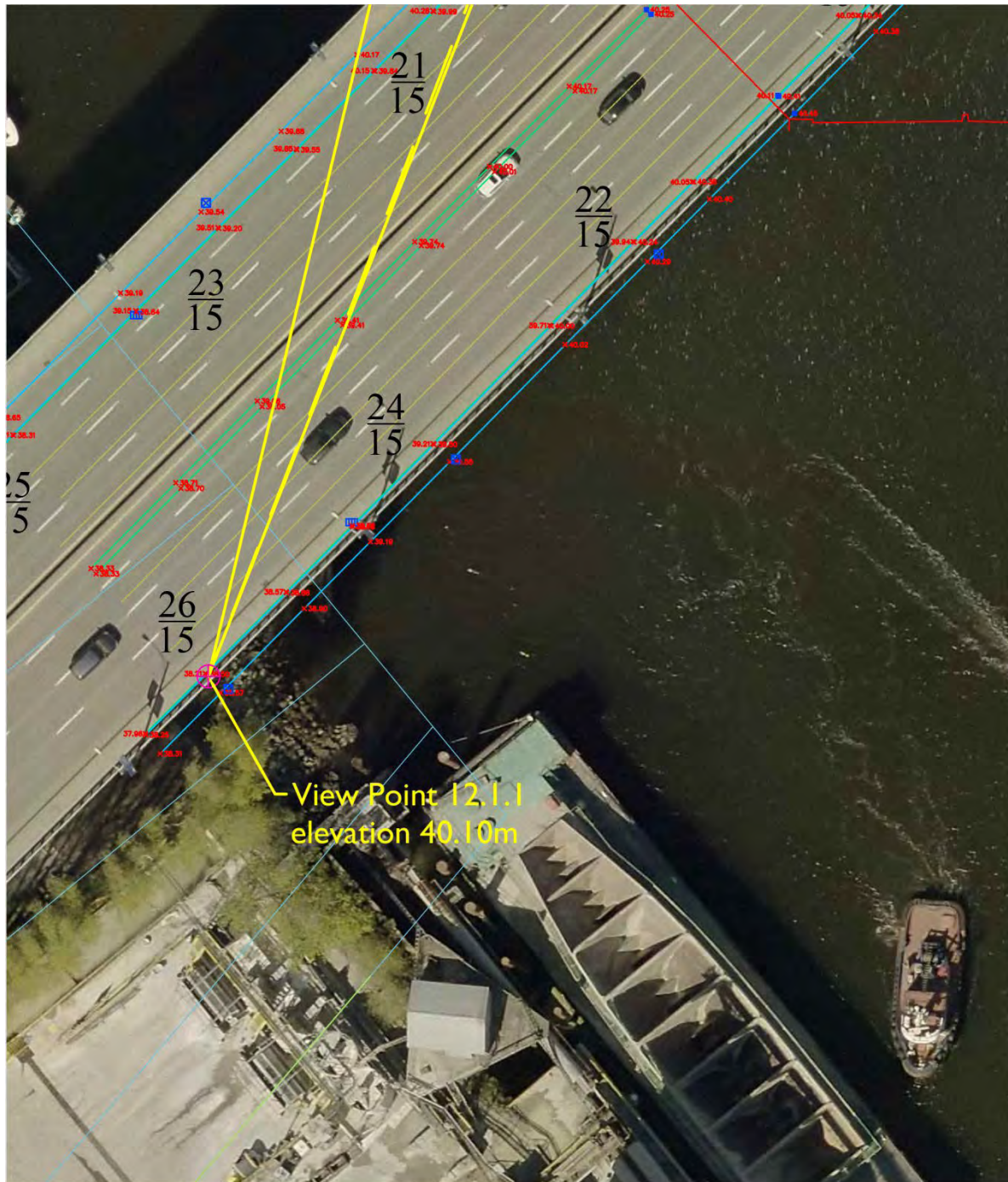
'10' View Point - Granville Island



'10' View Point - Granville Island



'12.1.1' View Point - Granville Bridge East sidewalk at pole 26/15



View Point 12.1.1  
elevation 40.10m



### View Cone 12.1.1

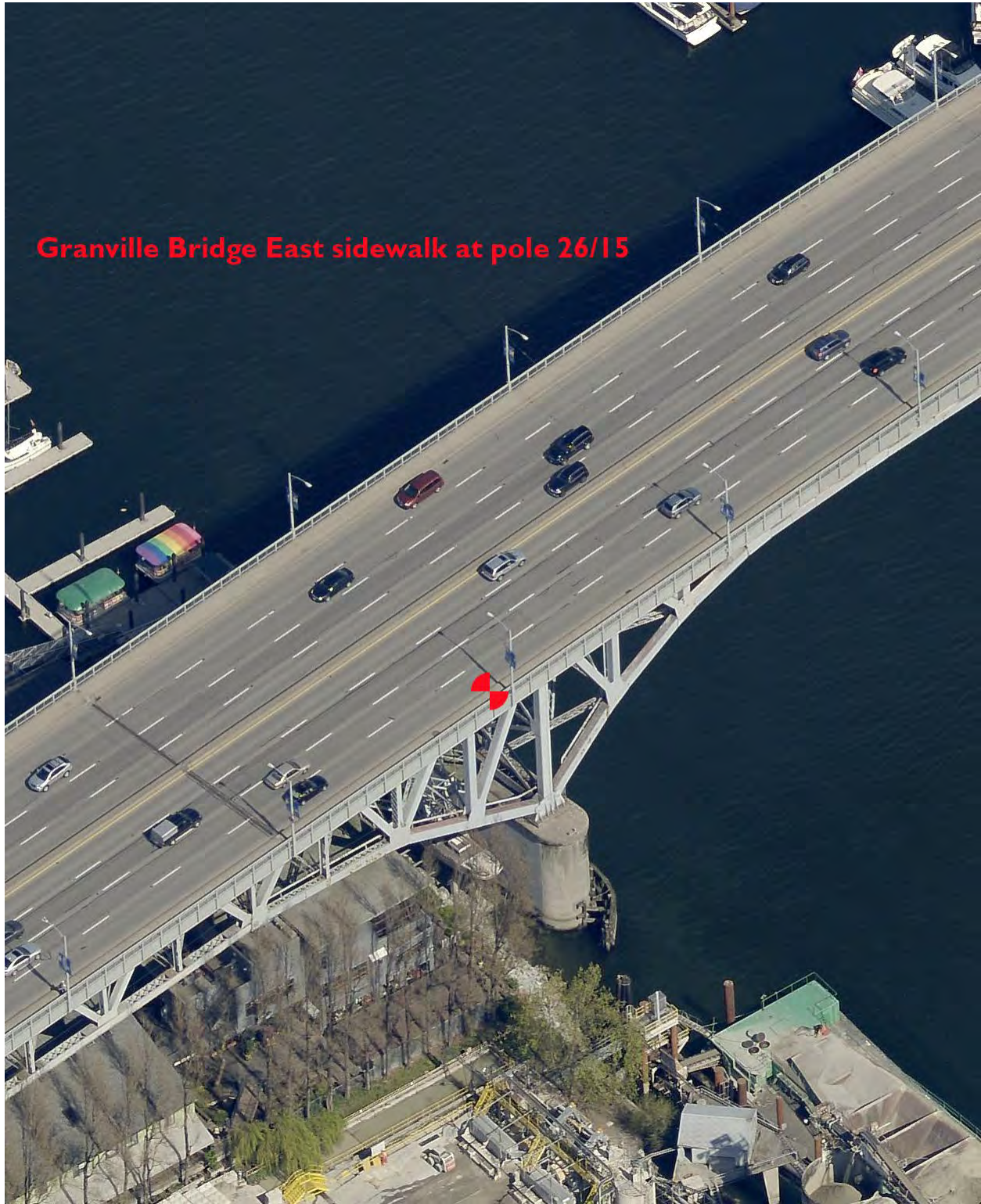
View Point: on Granville Street Bridge East sidewalk at street light pole 26/15

View Point Elevation: 40.10m

View Field: Crown & Grouse Mountains

UDDP\View Cones\2017\View Cones 2017 Data Set i.dwg

'12.1.1' View Point - Granville Bridge East sidewalk at pole 26/15



'12.1.1' View Point - Granville Bridge East sidewalk at pole 26/15





'12.1.2' View Point - Granville Bridge East sidewalk at dedication plaque (apex of bridge)



View Point 12.1.2  
elevation 42.01m



### View Cone 12.1.2

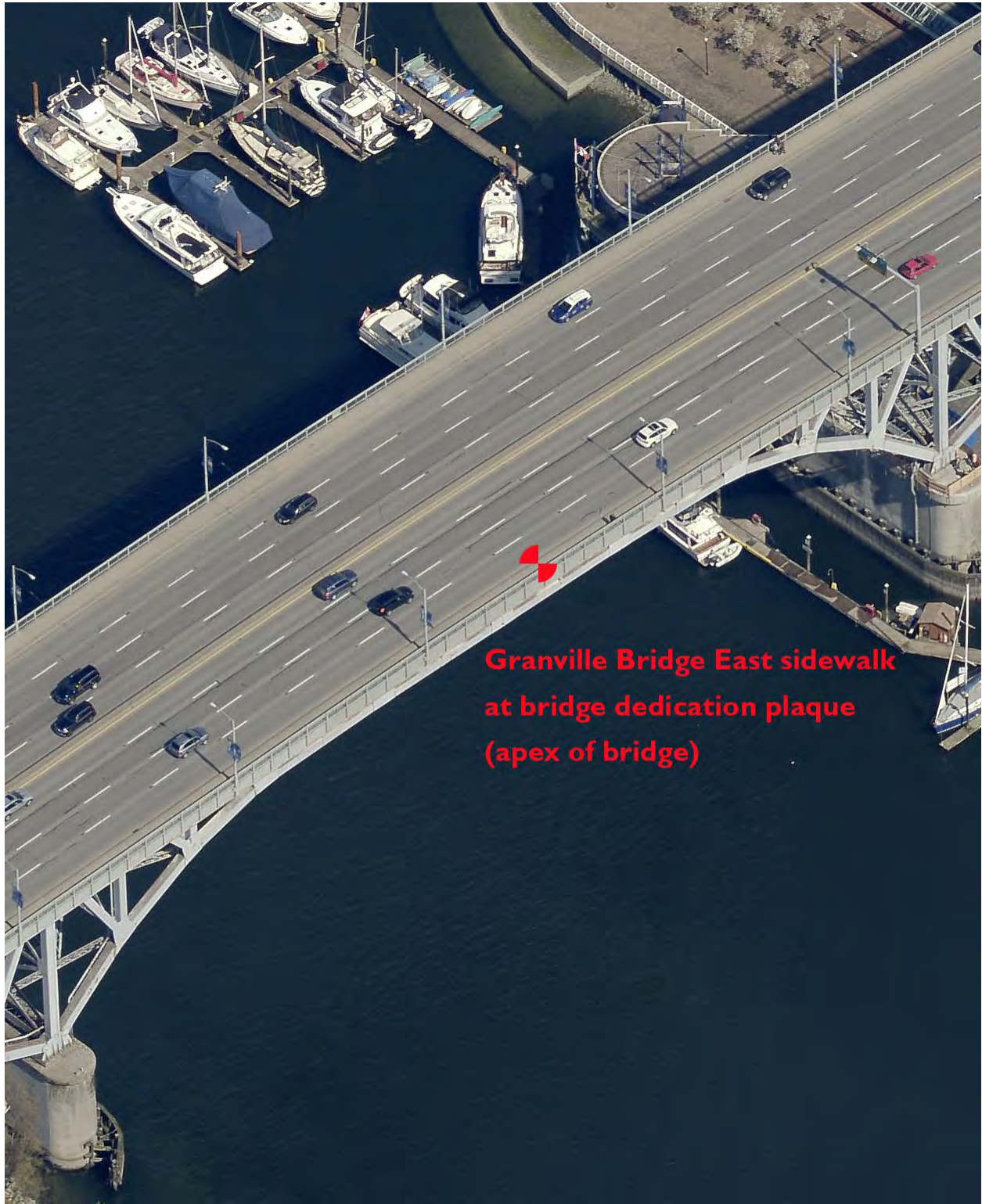
View Point: Apex of Granville Street Bridge East sidewalk at dedication plaque

View Point Elevation: 42.01m

View Field: Crown & Grouse Mountains

UDDP\View Cones\2017\View Cones 2017 Data Set i.dwg

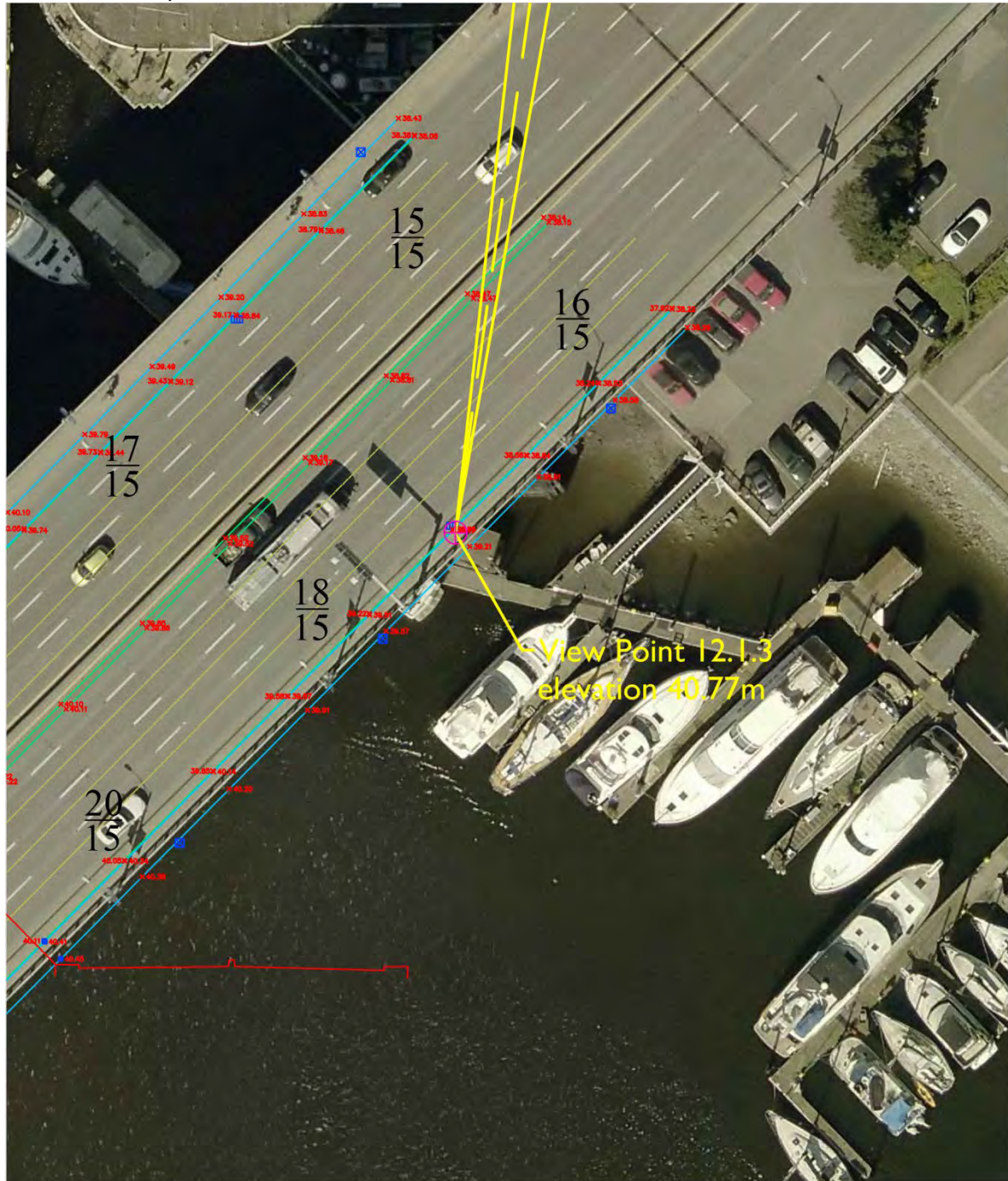
'12.1.2' View Point - Granville Bridge East sidewalk at dedication plaque (apex of bridge)



'12.1.2' View Point - Granville Bridge East sidewalk at dedication plaque (apex of bridge)



'12.1.3' View Point - Granville Bridge East sidewalk at overhead street sign (between poles 18/15 & 16/15)



## View Cone 12.1.3

View Point: on Granville Street Bridge East sidewalk at overhead road sign pole

View Point Elevation: 40.77m

View Field: Crown & Grouse Mountains



UDDP\View Cones\2017\View Cones 2017 Data Set i.dwg

'12.1.3' View Point - Granville Bridge East sidewalk at overhead street sign (between poles 18/15 & 16/15)



**Granville Bridge East sidewalk at  
overhead street sign  
(between pole 18/15 and 16/15)**

'12.1.3' View Point - Granville Bridge East sidewalk at overhead street sign (between poles 18/15 & 16/15)



'12.2' View Point - Granville Bridge East sidewalk at dedication plaque (apex of bridge)



### View Cone 12.2

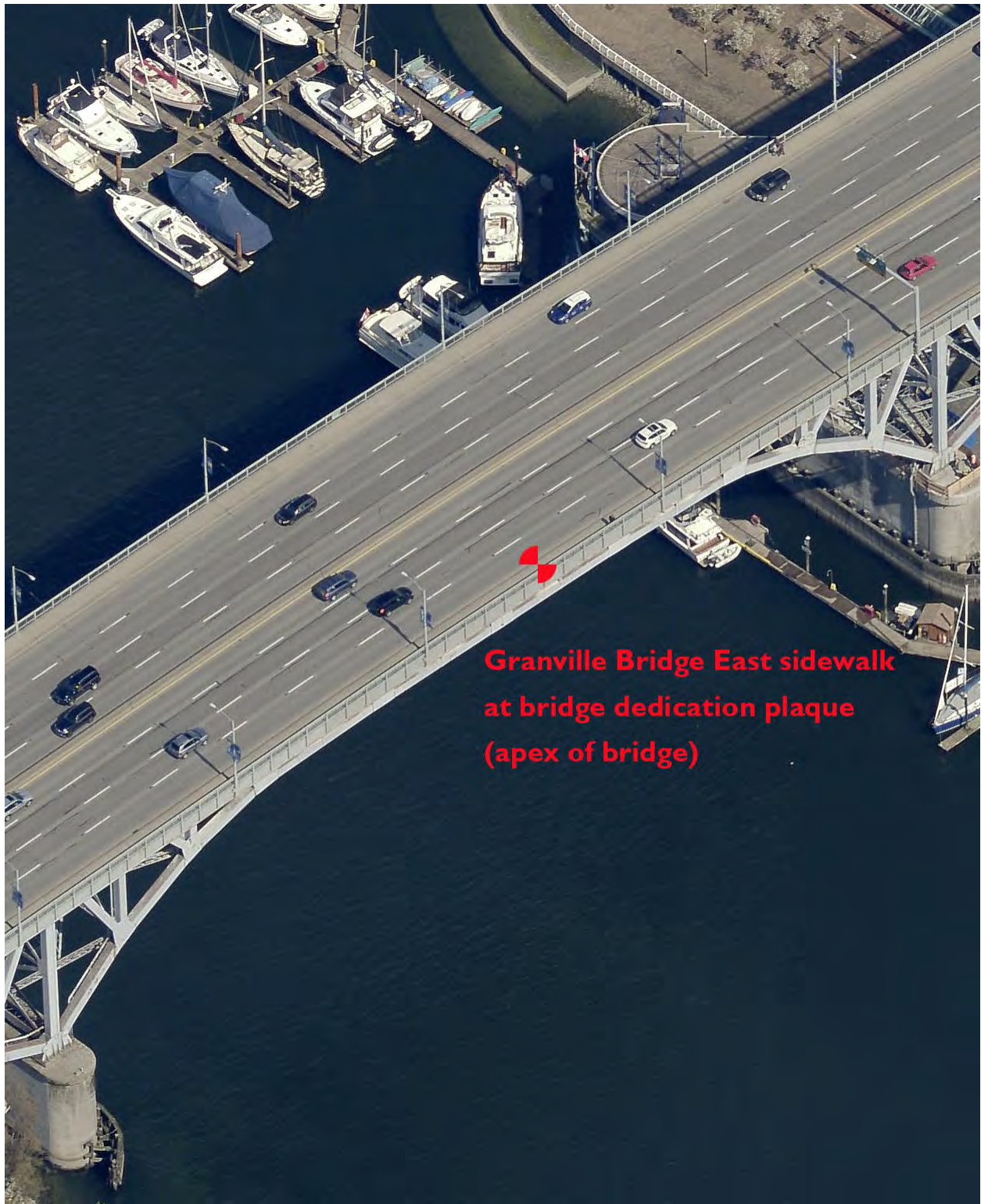
View Point: Apex of Granville Street Bridge East sidewalk at dedication plaque

View Point Elevation: 42.01m

View Field: Mount Seymour

UDDP\View Cones\2017\View Cones 2017 Data Set i.dwg

'12.2' View Point - Granville Bridge East sidewalk at dedication plaque (apex of bridge)



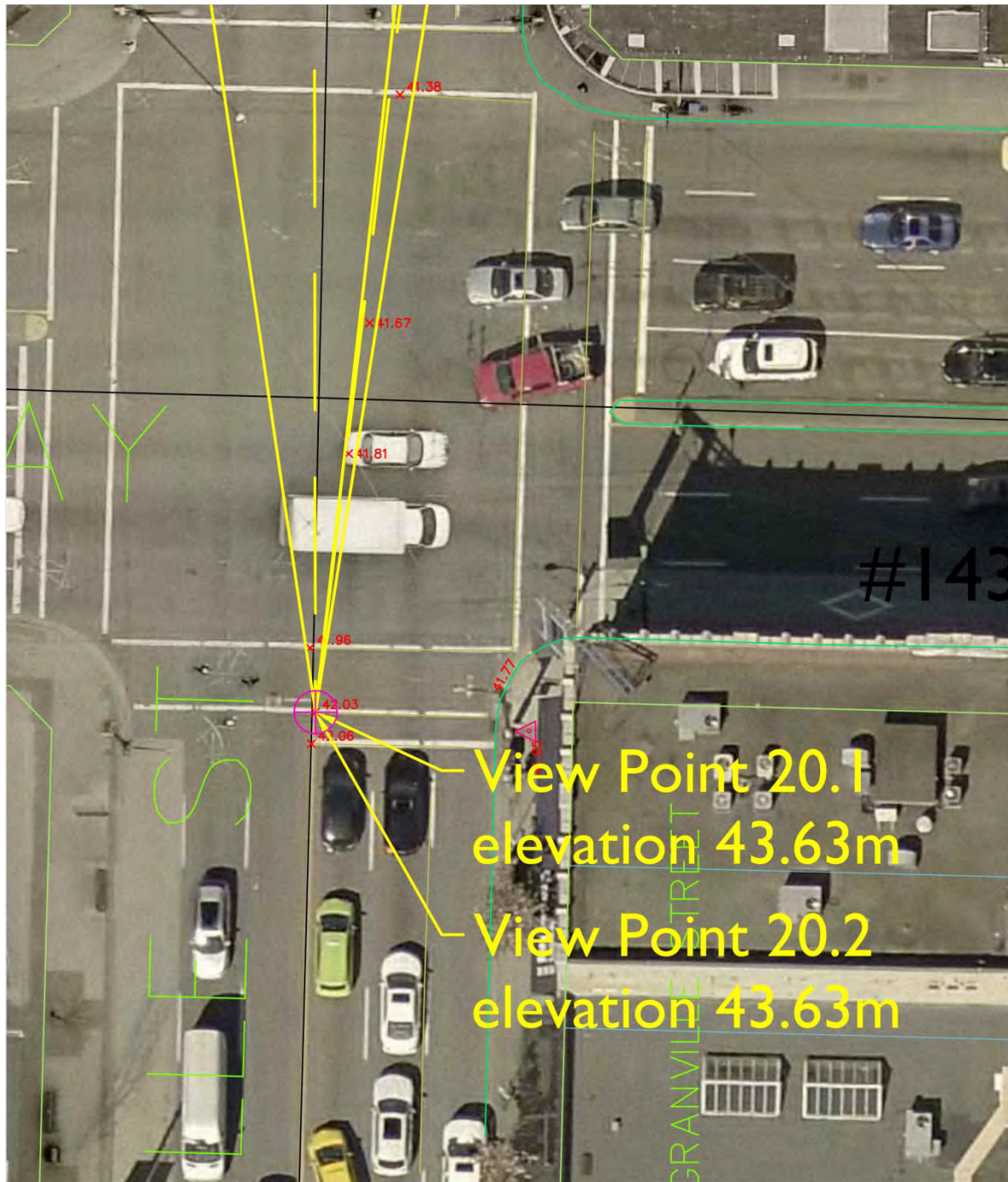
**Granville Bridge East sidewalk  
at bridge dedication plaque  
(apex of bridge)**



'12.2' View Point - Granville Bridge East sidewalk at dedication plaque (apex of bridge)



'20' View Point - South Crosswalk of Granville at Broadway



View Point 20.1  
elevation 43.63m  
View Point 20.2  
elevation 43.63m



**View Cone 20**

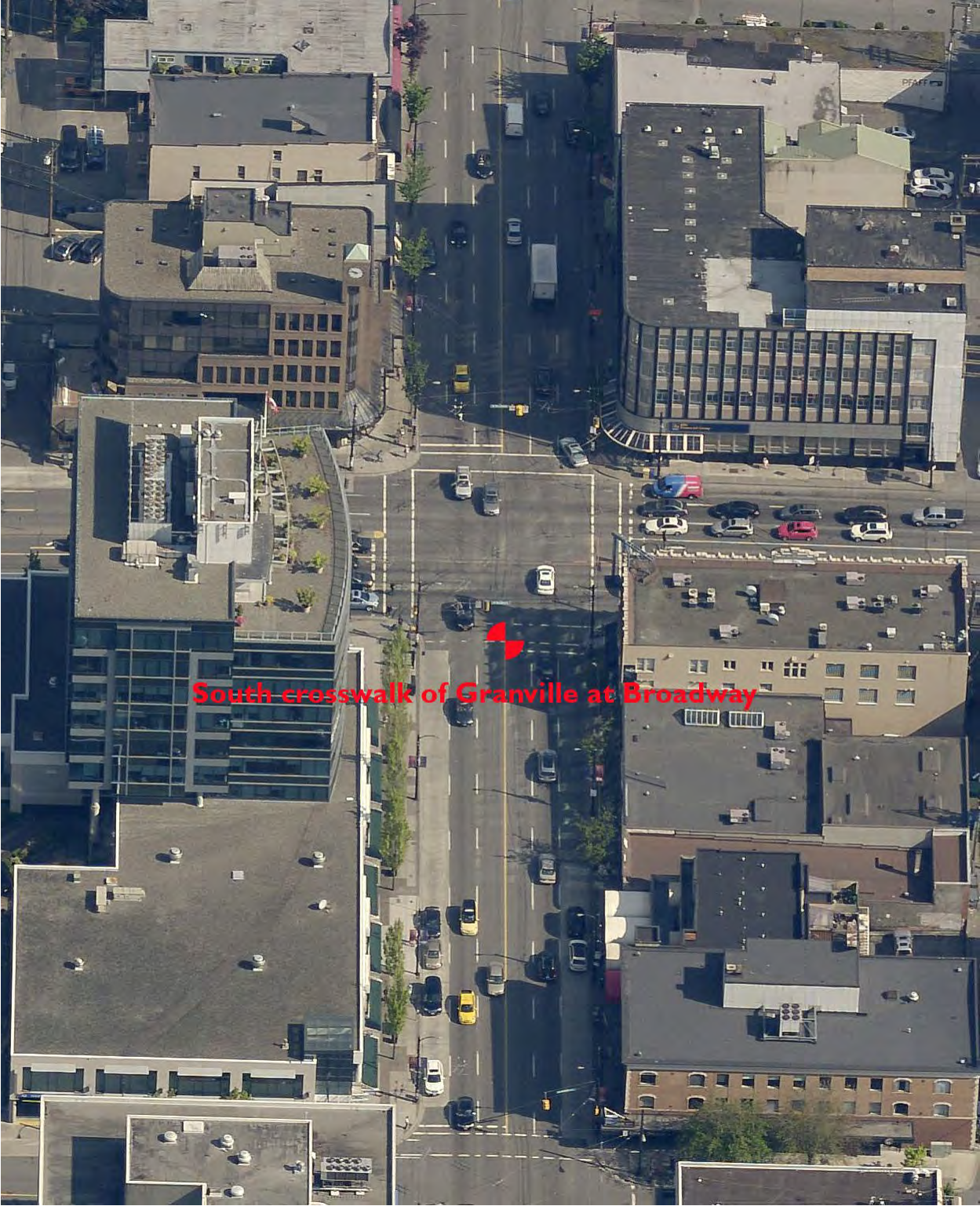
View Point: Granville Street at Broadway -  
South crosswalk

View Point Elevation: 43.63m

View Field: North Shore Mountains

UDDP\View Cones\2017\View Cones 2017 Data Set i.dwg

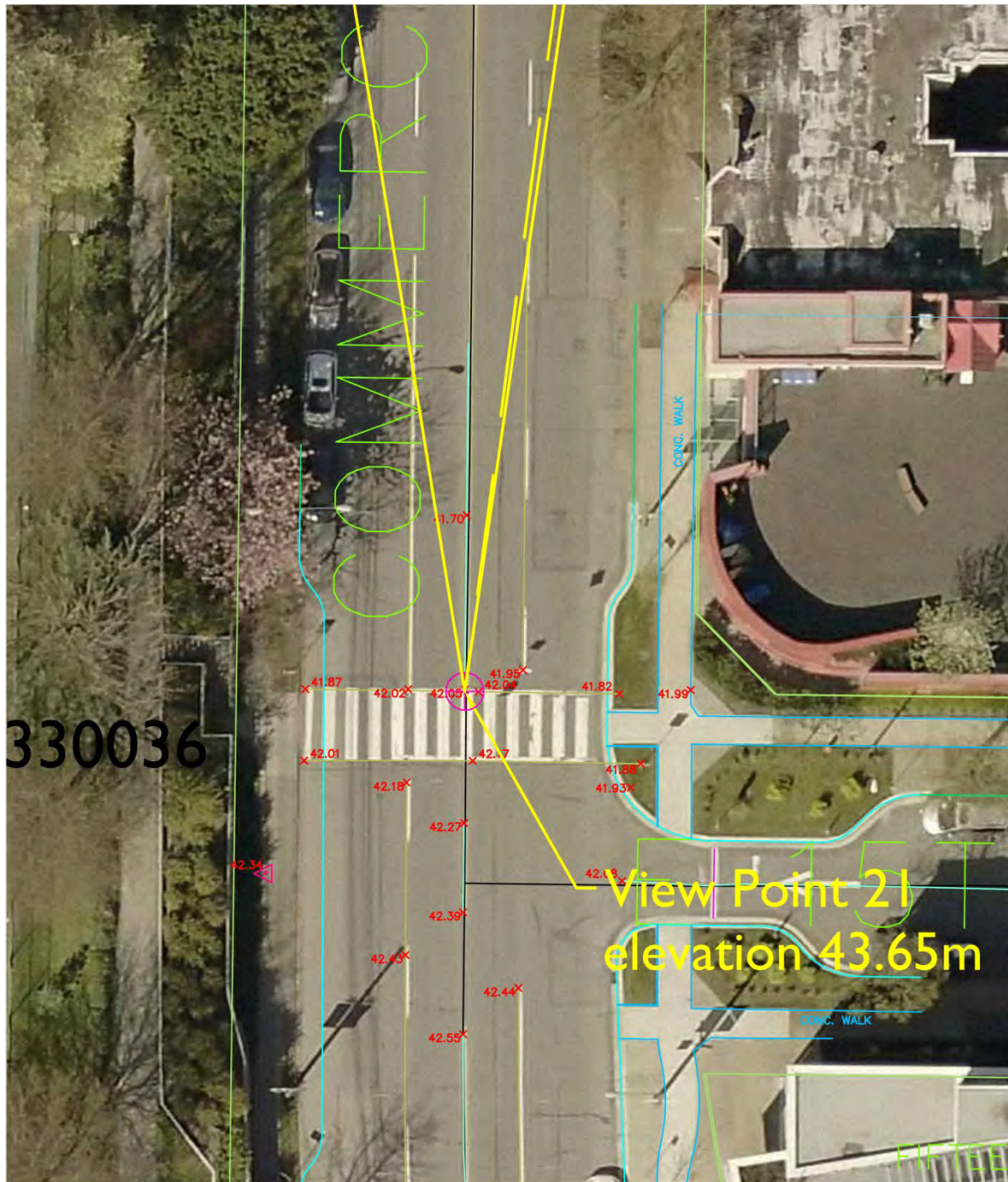
'20' View Point - South Crosswalk of Granville at Broadway



'20' View Point - South Crosswalk of Granville at Broadway



'21' View Point - Crosswalk on Commercial at 15<sup>th</sup> Avenue



### View Cone 21

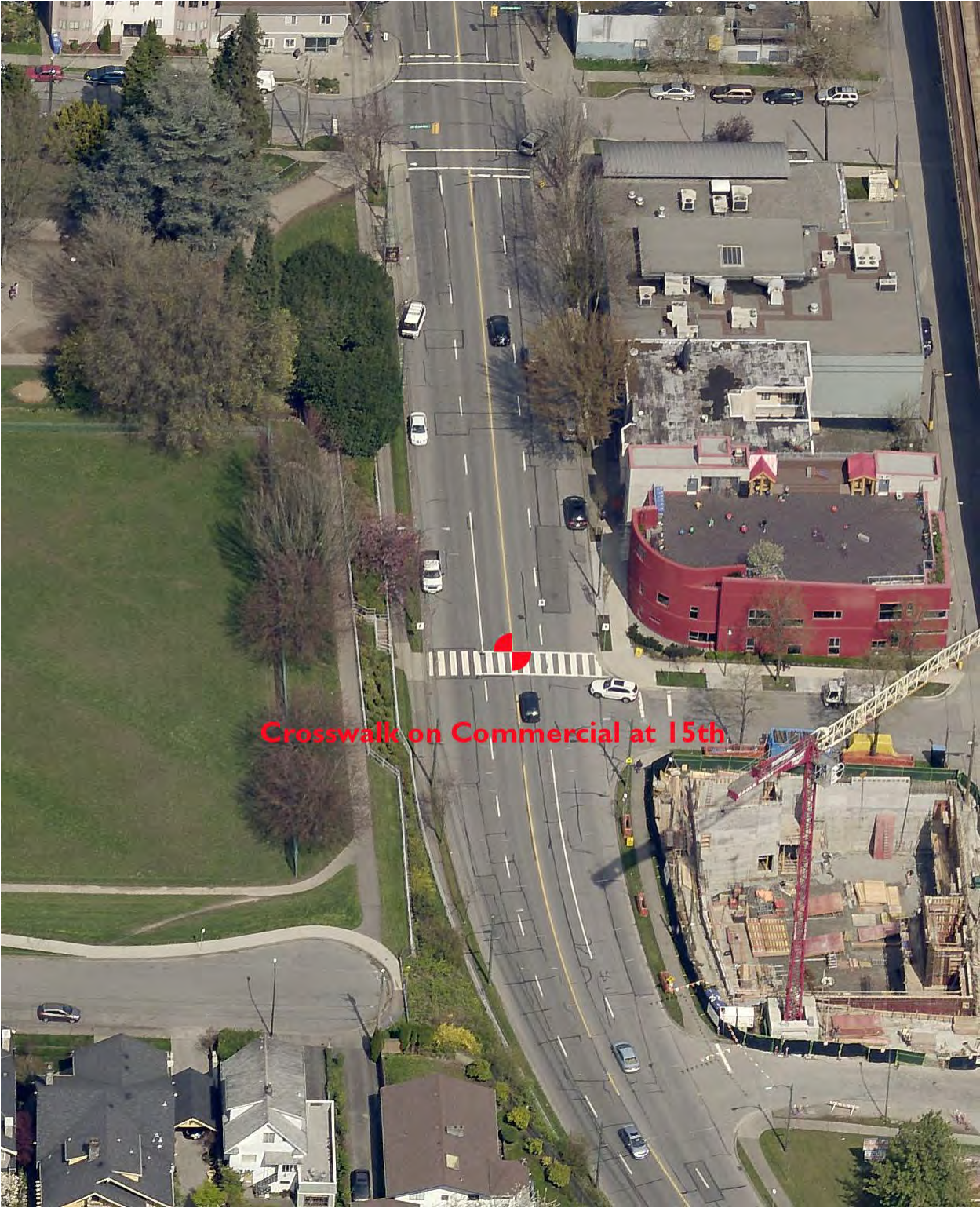
View Point: Pedestrian crosswalk on  
Commercial Drive at E 15th Avenue

View Point Elevation: 43.65m

View Field: North Shore Mountains

UDDP\View Cones\2017\View Cones 2017 Data Set i.dwg

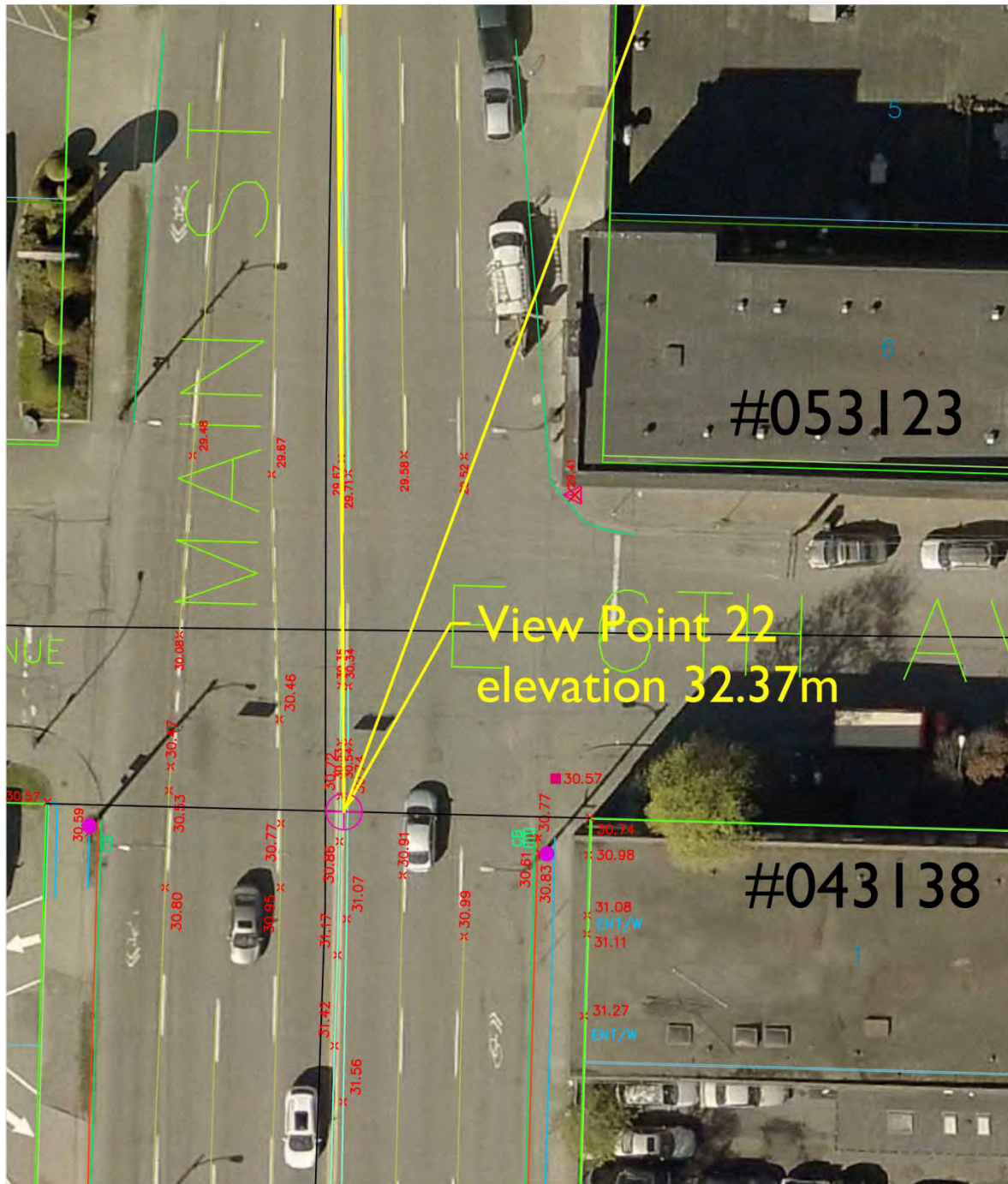
'21' View Point - Crosswalk on Commercial at 15<sup>th</sup> Avenue



'21' View Point - Crosswalk on Commercial at 15<sup>th</sup> Avenue



'22' View Point - Main Street at 6<sup>th</sup> Avenue



### View Cone 22

View Point: Middle of Main Street at E 6th Avenue (South side of intersection)

View Point Elevation: 32.37m

View Field: North Shore Mountains



UDDP\View Cones\2017\View Cones 2017 Data Set i.dwg



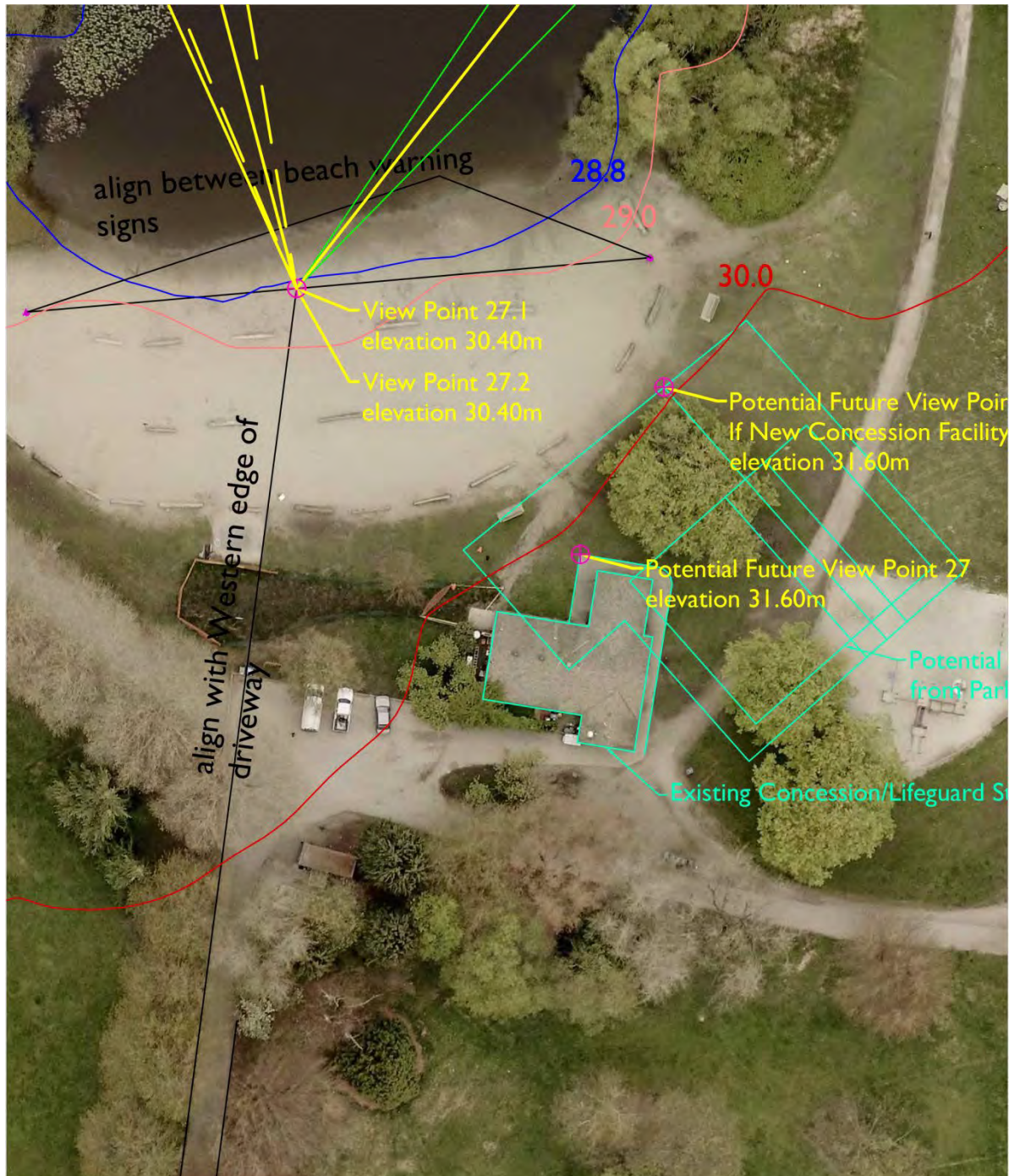
'22' View Point - Main Street at 6<sup>th</sup> Avenue



'22' View Point - Main Street at 6<sup>th</sup> Avenue



'27' View Point - South end of Trout Lake



### View Cone 27

View Point: South shore of Trout Lake in John Henry Park

View Point Elevation: 30.40m

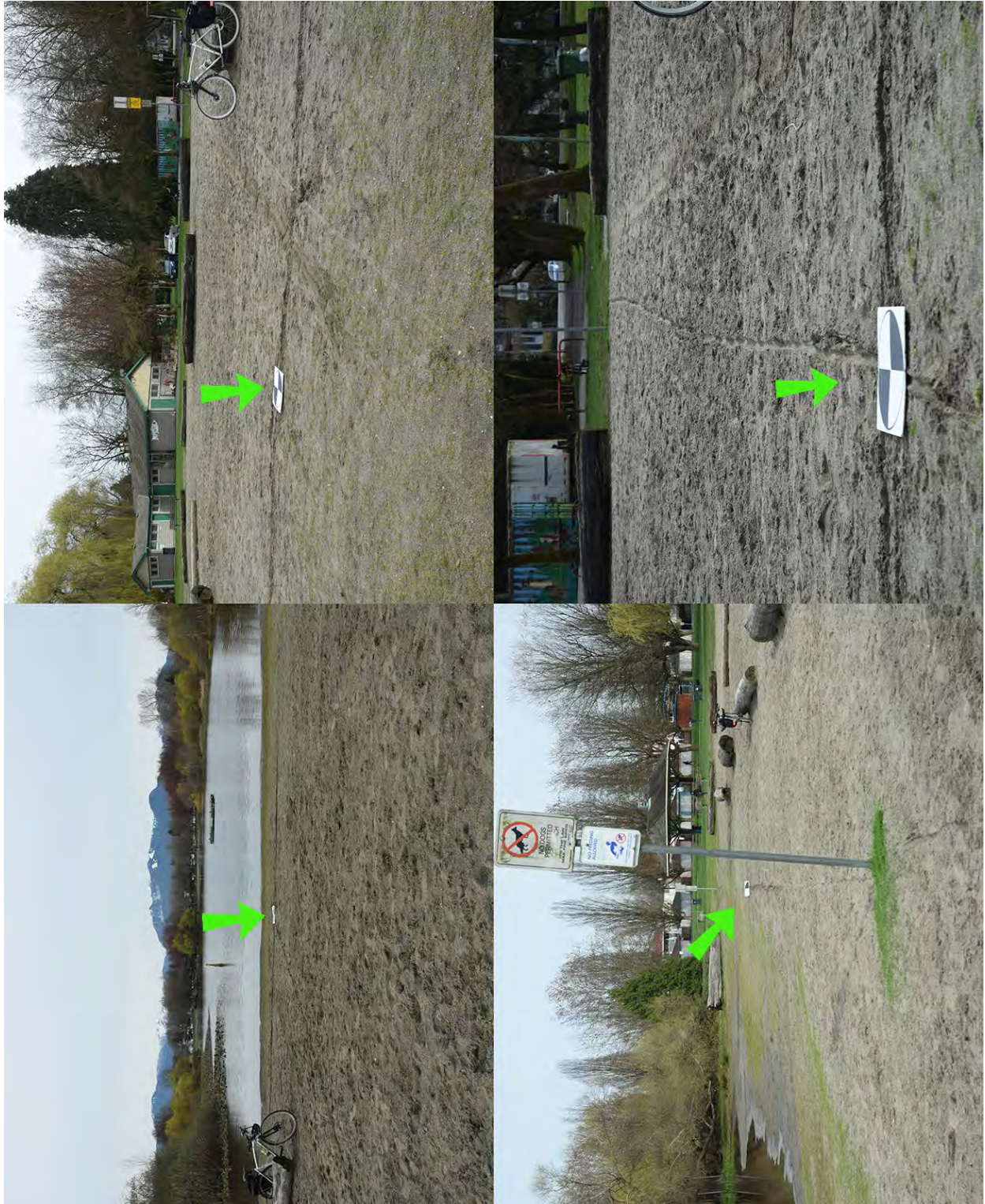
View Field: North Shore Mountains

UDDP\View Cones\2017\View Cones 2017 Data Set i.dwg

'27' View Point - South end of Trout Lake



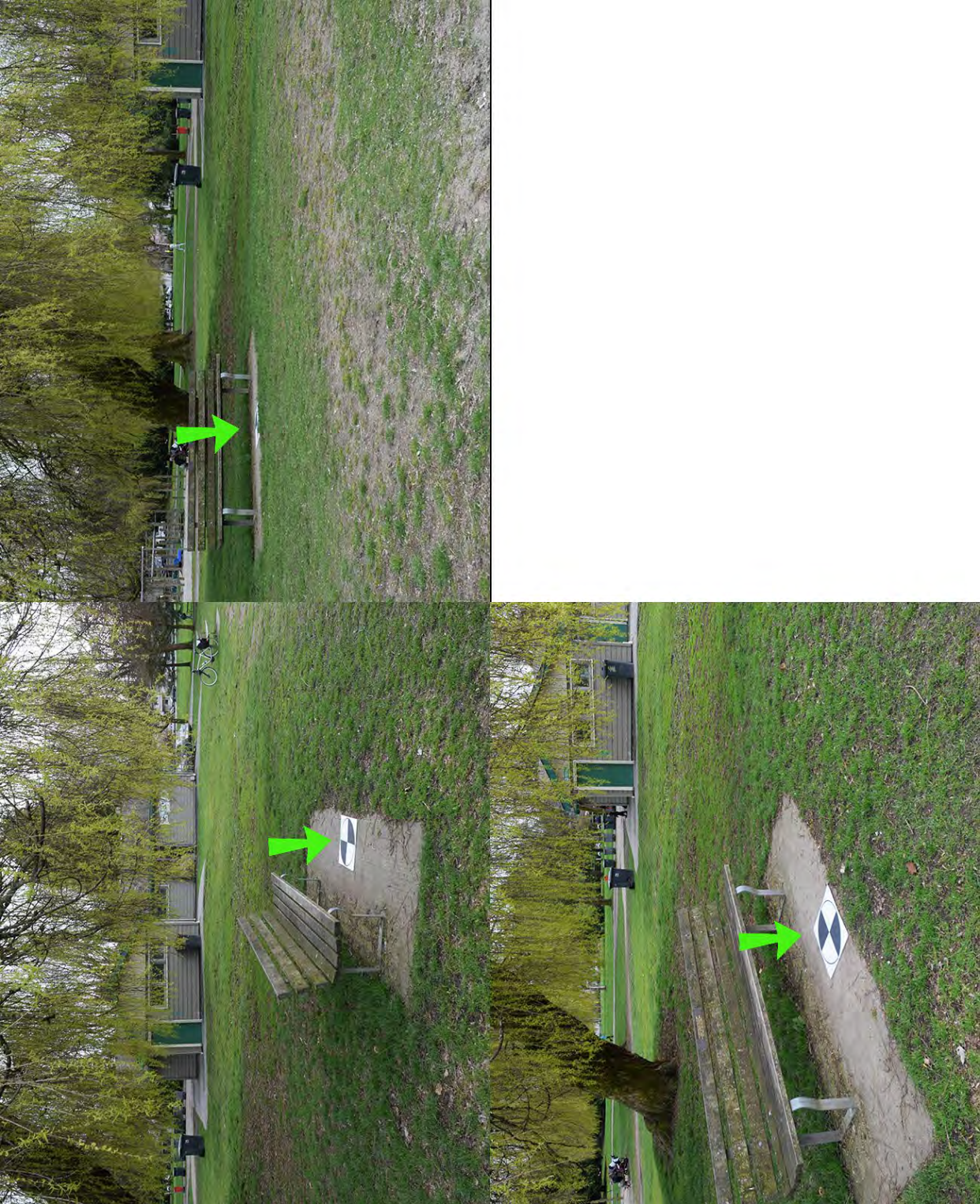
'27' View Point - South end of Trout Lake



'27' View Point Alternate Location 1- South end of Trout Lake by Lifeguard Station



'27' View Point Alternate Location 2- South end of Trout Lake on 'Future' Concession Patio







View Point	View Cone 2017	Reference Building - Plimso	Cad File	SketchUp File	West Boundary Building	Cad File	SketchUp File	East Boundary Building	Cad File	SketchUp File	Photo	Image Match
1	A	199 Drake was 1008 Cambie	y	y	212 Davie (1233 Pacific)	y	y	1198 Pacific	y	y	y	
2	B1	1212 Howe	y	y	1234 Hornby	y	y	1255 Seymour	y	y	y	
2	B2	(formerly) 1190 Hornby 999 Seymour	y	y	1025 W Georgia	y	y	199 Drake	y	y	y	
3	C1	was 655 Burrard - Hyatt 1212 Howe	y	y	1408 Strathmore Mews	y	y	1255 Seymour	y	y		
3	C2.1	(formerly) Sheraton Landmark 1025 W Georgia	y	y	Richards 1111 (508 Helmcker DE Model	y	y	1025 W Georgia	y	y		
3	C2.2	199 Drake	y	y	1025 W Georgia	y	y	1233 Pacific	y	y		
4	D	1151 Pacific (283 Davie) (formerly) 800 Burrard	y	y	Richards 1111 (508 Helmcker DE Model	y	y	1228 Marinaside Cres	y	y	y	
5	E1	980 Cooperage - Partial	y - partial	y - partial	401 W Georgia	y	y	918 Cooperage Way	partial	partial		
5	E2.1	120 Milross	y	y	future - Concord or PoN	n	n	120 Milross	y	y		
6	E2.2	future - Concord or PoN	n	n	65 E Hastings	y	y	211 Georgia E	y	y		
7	F1.1	future - Concord or PoN	n	n	future - Concord or PoN	n	n	future - Concord or PoN	n	n		
7	F1.2	1280 Richards - Grace * View includes copper roof	y	y	1483 Homer	y	y	322 - 388 Drake	y	y		
7	F1.3	833 Seymour	y	y	801 w Georgia/667 Howe Residence Hotel Georgia	y	y	833 Seymour	y	y		
8	G1.1	1233 Pacific	y	y	833 Seymour	y	y	650 W Georgia - Scotia Tower	y	y		
8	G1.2	future 105 Keefer development?	n	n	Future FCN	n	n	189 Keefer	y	y		
9	H	188 Keefer	y	y	189 Keefer	y	y	future FCN	n	n		
10	J1.1	future 105 Keefer development?	n	n	future FCN	n	n	125 Milross	y	y		
10	J1.2	550 Taylor - temporary future BC Electric development	y	y	16 East Cordova ? started	y	y	1 Athletes Way	y	y		
11	3.1	future 105 Keefer development	n	n	550 Taylor	y	y	20 W Hastings	y	y		
11	3.2.1	601 Broadway	y	y	20 W Hastings future BC Electric development	y	y	future BC Electric development	y	y		
11	3.2.2	498 Drake (formerly) 1400 Robson	y	y	1160 Davie	y	y	550 Taylor	y	y		
11	3.2.3	650 W Georgia - Scotia Tower	y	y	1160 Davie	y	y	1025 W Georgia	y	y		
11	3.2.4	555 W Hastings - Harbour Centre	y - p	y	1025 W Georgia	y	y	650 W Georgia - Scotia Tower	y	y		
11	3.2.4a	1182 Quebec old - 375 Main (Hastings) - Dawson (FCN)	n	n	550 Taylor	y	y	431 Princess (Church Spire) aka 579 Pender E	y	y - spire		
12	9.1	183 Terminal - VanCity old - Sun Tower	n - started	y - source?	550 Taylor	y	y	431 Princess (Church Spire) aka 579 Pender E	y	y - spire		
13	9.2.1	33 Smithe	n	n	1033 Marinaside	y	y	Light Pole 2/26	so-so	y		
13	9.2.2	833 Seymour	y	y	500 w 10th	y	y	650 W Georgia - Scotia Tower	y	y		
14	10	200 Granville	y	y	650 W Georgia - Scotia Tower	y	y	Western Stairs at City Hall	maybe	y		
15	12.1.1	Burrard Bridge	y	y	Burrard Bridge	y	y	1155 Beach	y	y		
16	12.1.2	1488 Hornby Pacific Promenade	y	y	888 Beach	y	y	1380 Hornby	y	y		
17	12.1.3	1488 Hornby Pacific Promenade	y	y	1021 Harwood	y	y	1500 Howe	y	y		
18	12.2	1305 Burrard/1009 Harwood	y	y	1021 Harwood	y	y	1500 Howe	y	y		
19	20.1	607 Granville - Old Stock Exchange	y	y	700 W Georgia	y	y	1300 Granville The Rolston	y	y		
20	20.2	1763 Comox	y	y	2421 Granville	y	y	1265 Burnaby	y	y		
21	21	1265 Burnaby	y	y	1265 Burnaby	y	y	2414 Granville	y	y		
22	22	2928 Commercial	y	y	2929 Commercial	y	y	2928 Commercial	y	y		
23	27.1	183 Terminal	y - partial	y - source?	1182 Quebec	y	y	210 E 5th	y	y		
24	27.2	N/A (formerly) 2047 E 12th	y	y	N/A			Safeway Site				
25	27.2	N/A			N/A			N/A				

VanDoc 2013/153465  
City of Vancouver View Cones  
Reference Buildings