

From: ["van Dyk, Donny"](#)

To: ["Direct to Mayor and Council"](#)

Date: 3/19/2026 1:56:30 PM

Subject: Memo - Pine Street Link – Connecting the Arbutus and Seaside Greenways

Attachments: Memo - Pine Street Link - Connecting the Arbutus and Seaside gre enways.pdf

---

Dear Mayor and Council,

Please see the attached memo from Lon LaClaire regarding the **Pine Street Link – Connecting the Arbutus and Seaside Greenways**. A short summary of the memo is as follows:

- This memo provides an overview of upcoming stakeholder and public engagement for the Pine Street Link
- The Pine Street Link connects the Arbutus and Seaside greenways, two of the city's busiest active transportation routes.
- Through in person and online community engagement, we heard that people were supportive of improving safety for cycling, linking the two greenways and enhancing the public realm. We heard concerns regarding vehicle access to laneways, vehicle parking and loading, and vehicle circulation.
- This April, staff will share the updated design through notification letters, pole posters, visiting businesses door-to-door, stakeholder meetings and at a pop-up event. Participants will be encouraged to fill out a survey on their level of comfort with the updated design.

If you have any questions, please feel free to contact Lon LaClaire at 604-873-7336 or [lon.laclaire@vancouver.ca](mailto:lon.laclaire@vancouver.ca)

Thanks,

Donny

Donny van Dyk (he/him)  
City Manager  
City of Vancouver



## MEMORANDUM

March 19, 2026

TO: Mayor and Council

CC: Donny van Dyk, City Manager  
Armin Amrolia, Deputy City Manager  
Karen Levitt, Deputy City Manager  
Sandra Singh, Deputy City Manager  
Chris Freek, Director of Civic Engagement & Communications  
Katrina Leckovic, City Clerk  
Teresa Jong, Administrative Services Manager, City Manager's Office  
Mellisa Morphy, Director of Policy, Mayor's Office  
Trevor Ford, Chief of Staff, Mayor's Office

FROM: Lon LaClaire  
General Manager, Engineering Services

SUBJECT: Pine Street Link - Connecting the Arbutus and Seaside greenways

RTS #: N/A

---

### **Purpose**

This memo provides an overview of upcoming stakeholder and public engagement for the Pine Street Link.

### **Project Overview**

The Pine Street Link connects the Arbutus and Seaside greenways, two of the city's busiest active transportation routes. Connecting the greenways is an effective way to improve the comfort, convenience and safety for people cycling and walking, and helps advance the City's transportation goals.

### **Previous Community Engagement**

In 2021, staff met with businesses to understand how the conceptual design may impact their loading, access and circulation needs. This feedback informed the detailed design that was brought to residents and businesses in 2022.

Through in person and online community engagement, we heard that people were supportive of improving safety for cycling, linking the two greenways and enhancing the public realm. We heard concerns regarding vehicle access to laneways, vehicle parking and loading, and vehicle circulation.

The updated design (Appendix A) aims to address these concerns, while maintaining or enhancing areas of support.

### **Upcoming Stakeholder and Public Engagement**

The purpose of this April 2026 engagement phase is to share the revised design with the community before it is finalized.

Staff will share the updated design through notification letters, pole posters, visiting businesses door-to-door, stakeholder meetings and at a pop-up event. Participants will be encouraged to fill out a survey on their level of comfort with the updated design. All project information will be posted on [vancouver.ca/pine-street](https://vancouver.ca/pine-street).

Staff will refine the design and begin implementation in 2027.

Please feel free to contact me directly should you have any further questions about this initiative.

Sincerely,

A handwritten signature in blue ink, appearing to read 'Lon LaClaire', with a stylized flourish at the end.

Lon LaClaire, M.Eng., P.Eng.  
General Manager, Engineering Services

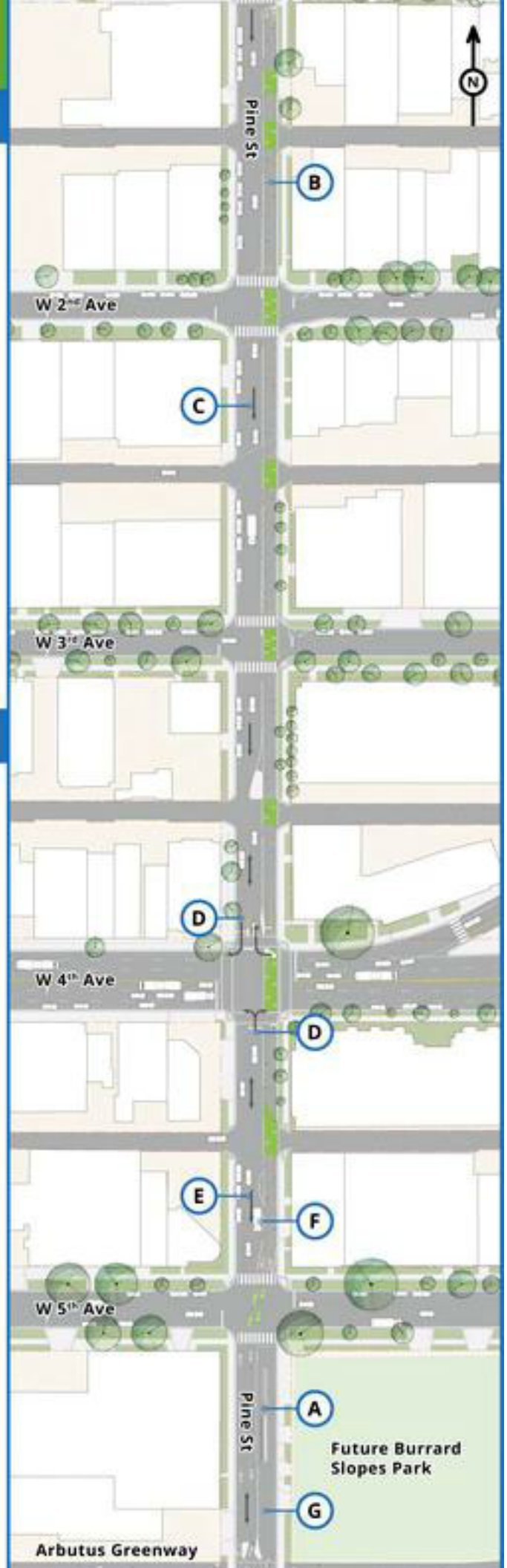
604.873.7336 | [lon.laclaire@vancouver.ca](mailto:lon.laclaire@vancouver.ca)

# Updated Design

## Key changes

- A** New public bike share and e-scooter share stations
- B** New protected bike lane on east side of Pine Street
- C** Southbound only on Pine St between W 1<sup>st</sup> Ave and W 4<sup>th</sup> Ave
- D** Eastbound and southbound left turns restricted at W 4<sup>th</sup> Ave and Pine St
- E** Southbound only on Pine St between laneway south of W 4<sup>th</sup> Ave and W 5<sup>th</sup> Ave
- F** Loading provided along the route to serve businesses
- G** Future green infrastructure / public space between W 5<sup>th</sup> Ave and W 6<sup>th</sup> Ave

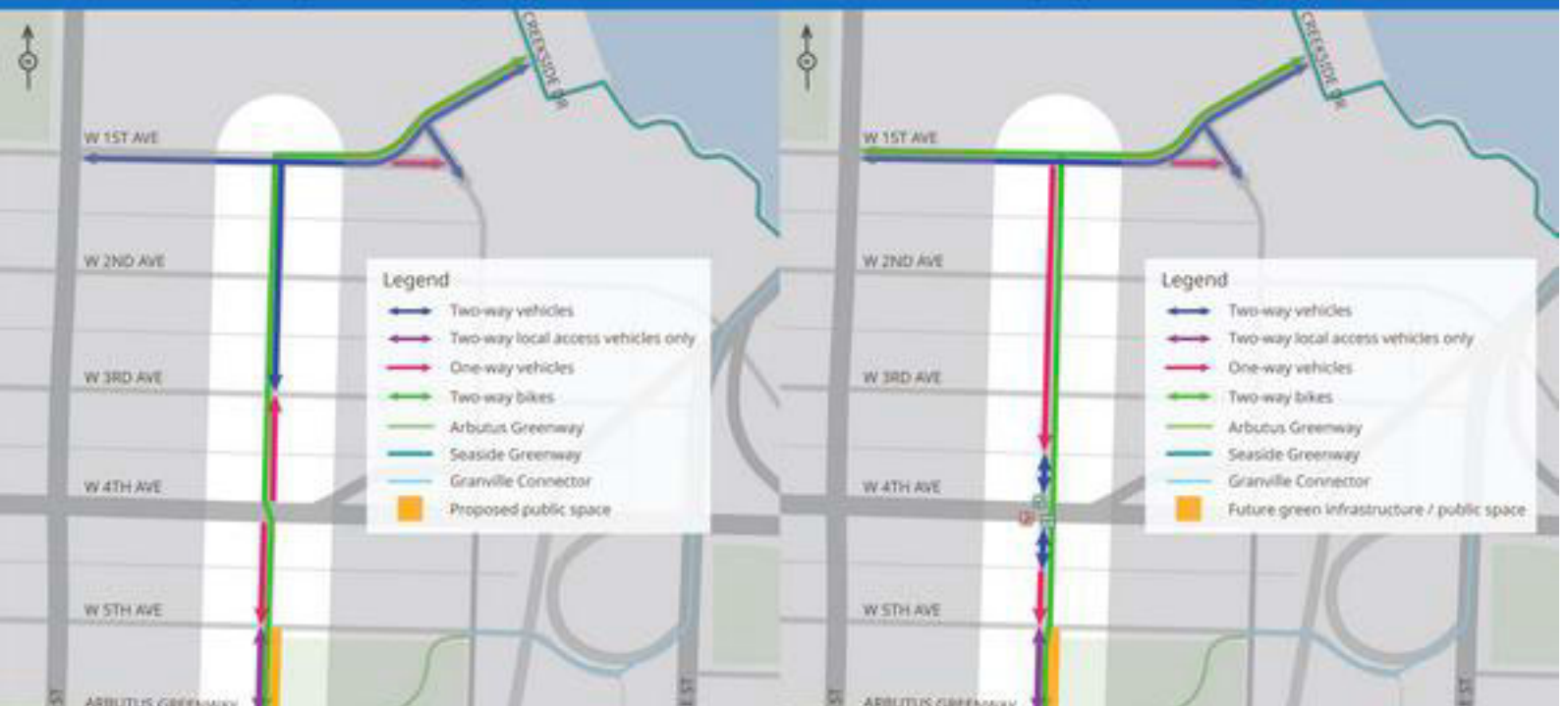
## Share your thoughts!



# Pine Street Link Access and Circulation Updates

Old proposed design (2022)

New proposed design (2026)



# Pine Street Link Parking and Loading Updates

Old proposed design (2022)

New proposed design (2026)

